

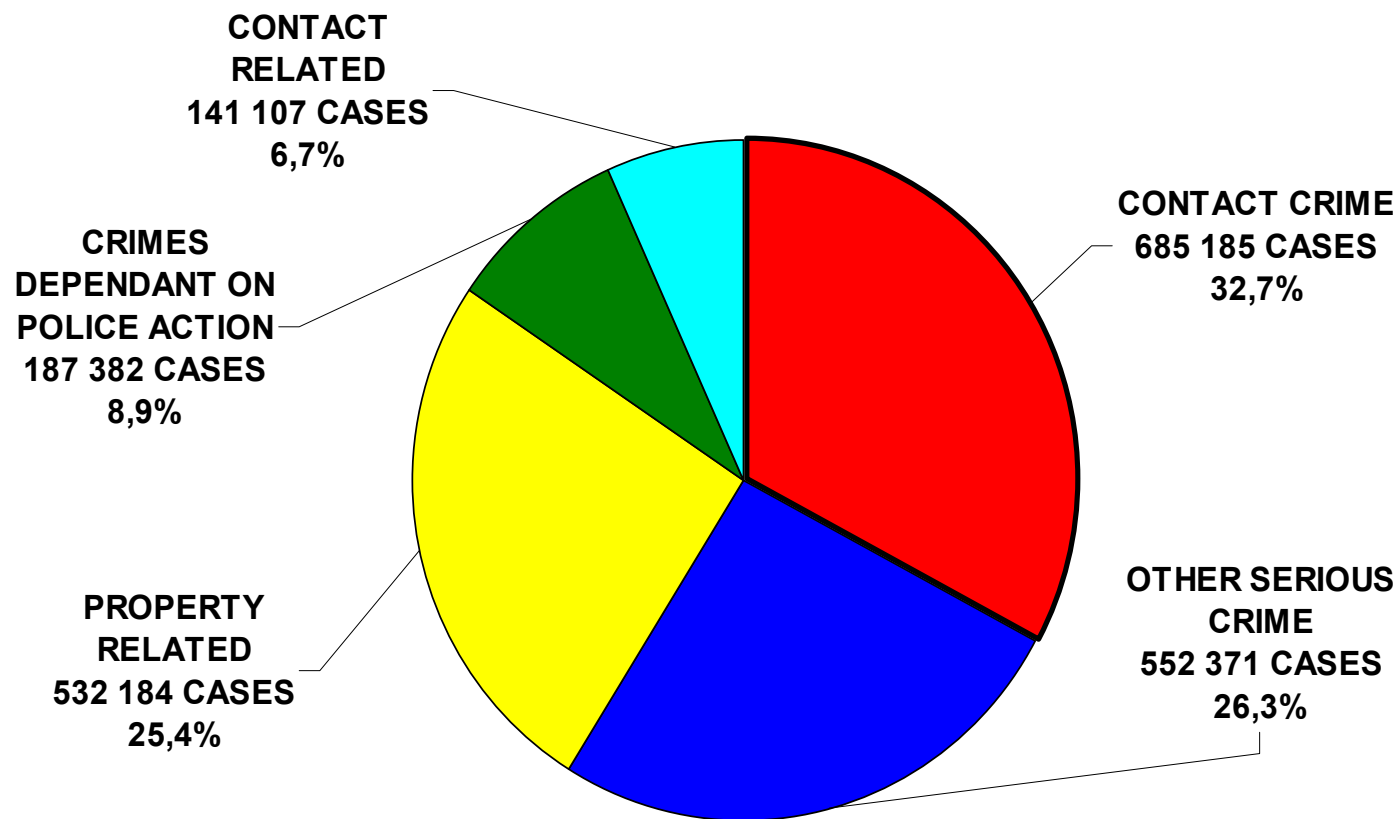
# Crime Situation in South Africa



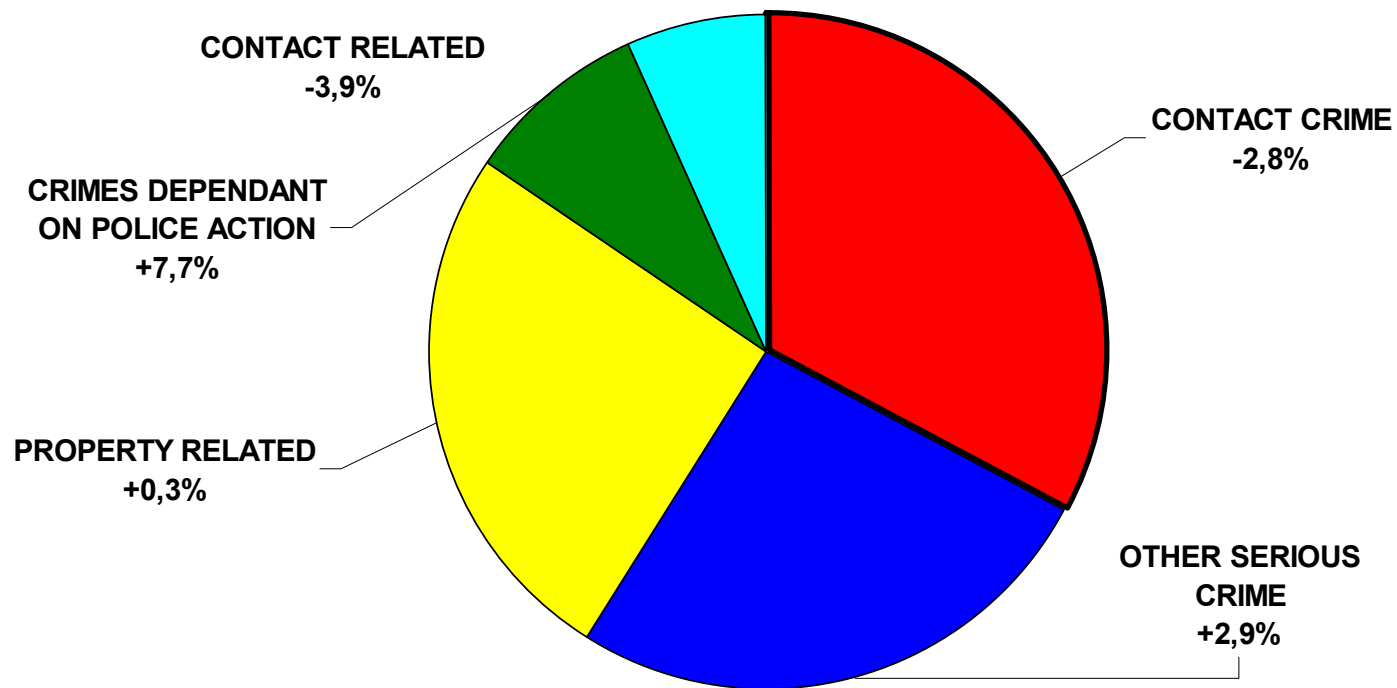
**2003/2004 to 2008/2009**



**SERIOUS CRIME IN THE RSA: 2008/2009**  
**2 098 229 CASES (2,1 MILLION)**

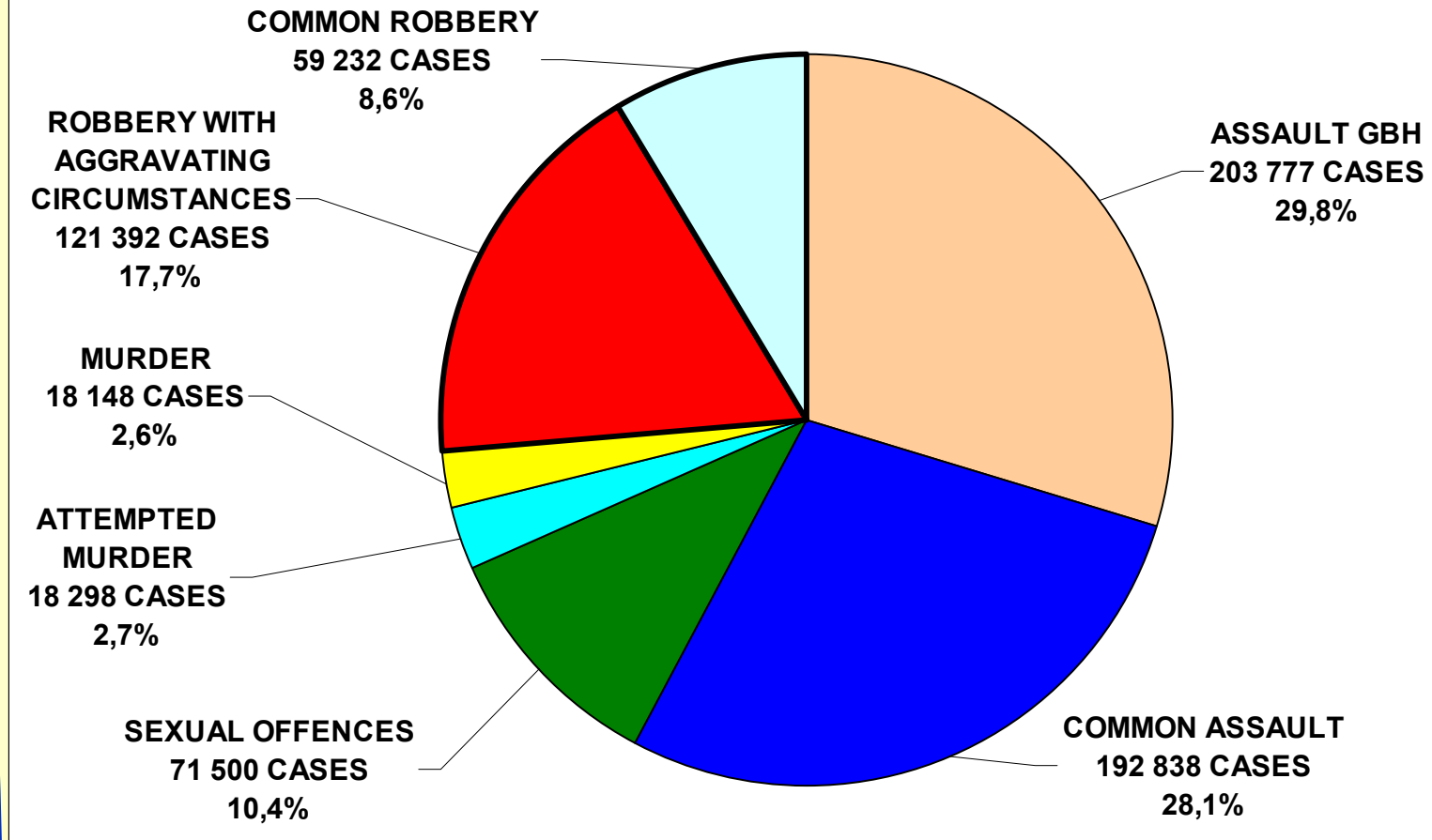


**SERIOUS CRIME IN THE RSA: 2008/2009**  
**RATIO DECREASE/INCREASE IN SERIOUS CRIME IN THE RSA**  
**TOTAL INCREASE +0,2%**

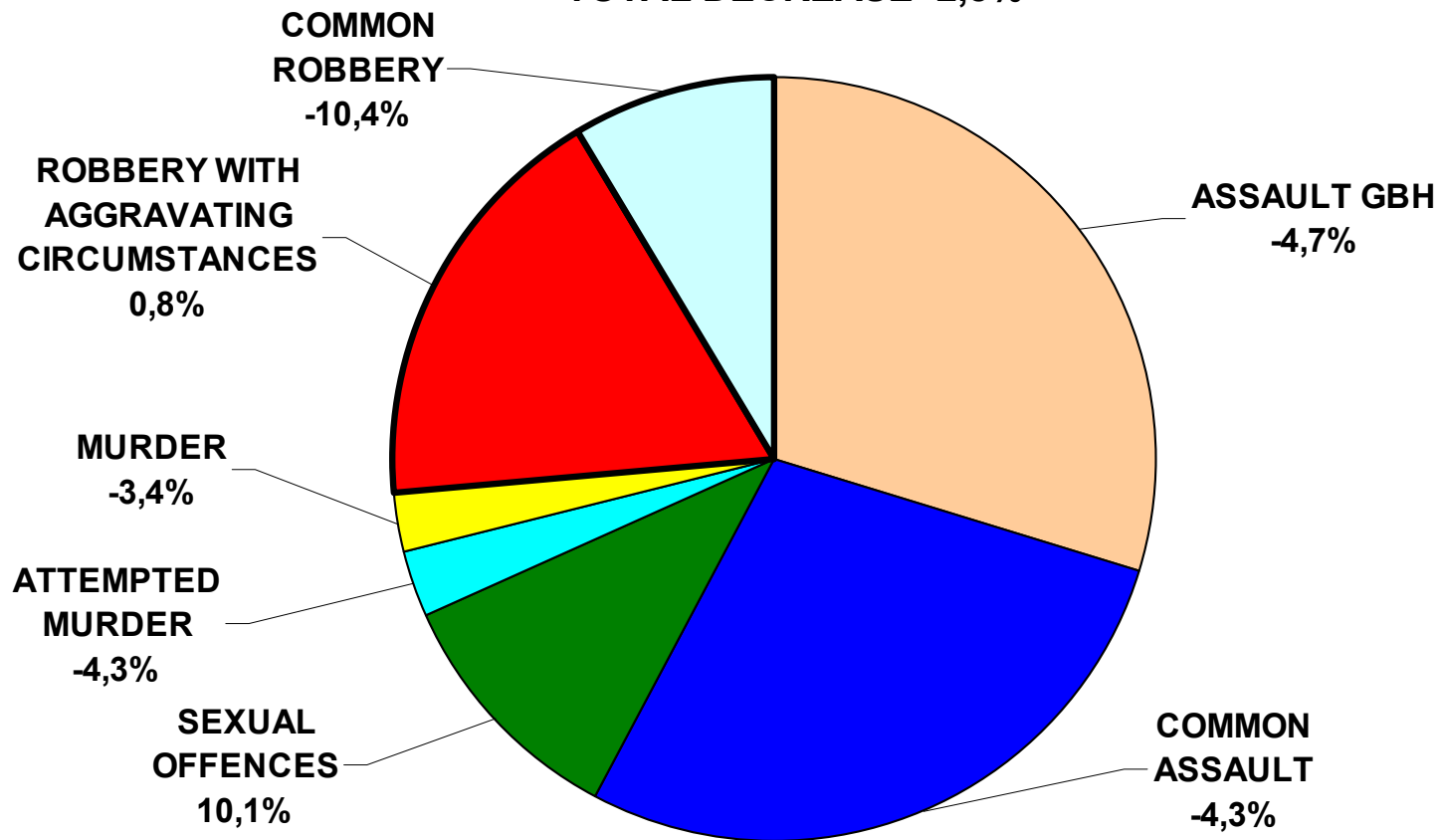


## CONTACT CRIME IN THE RSA: 2008/2009

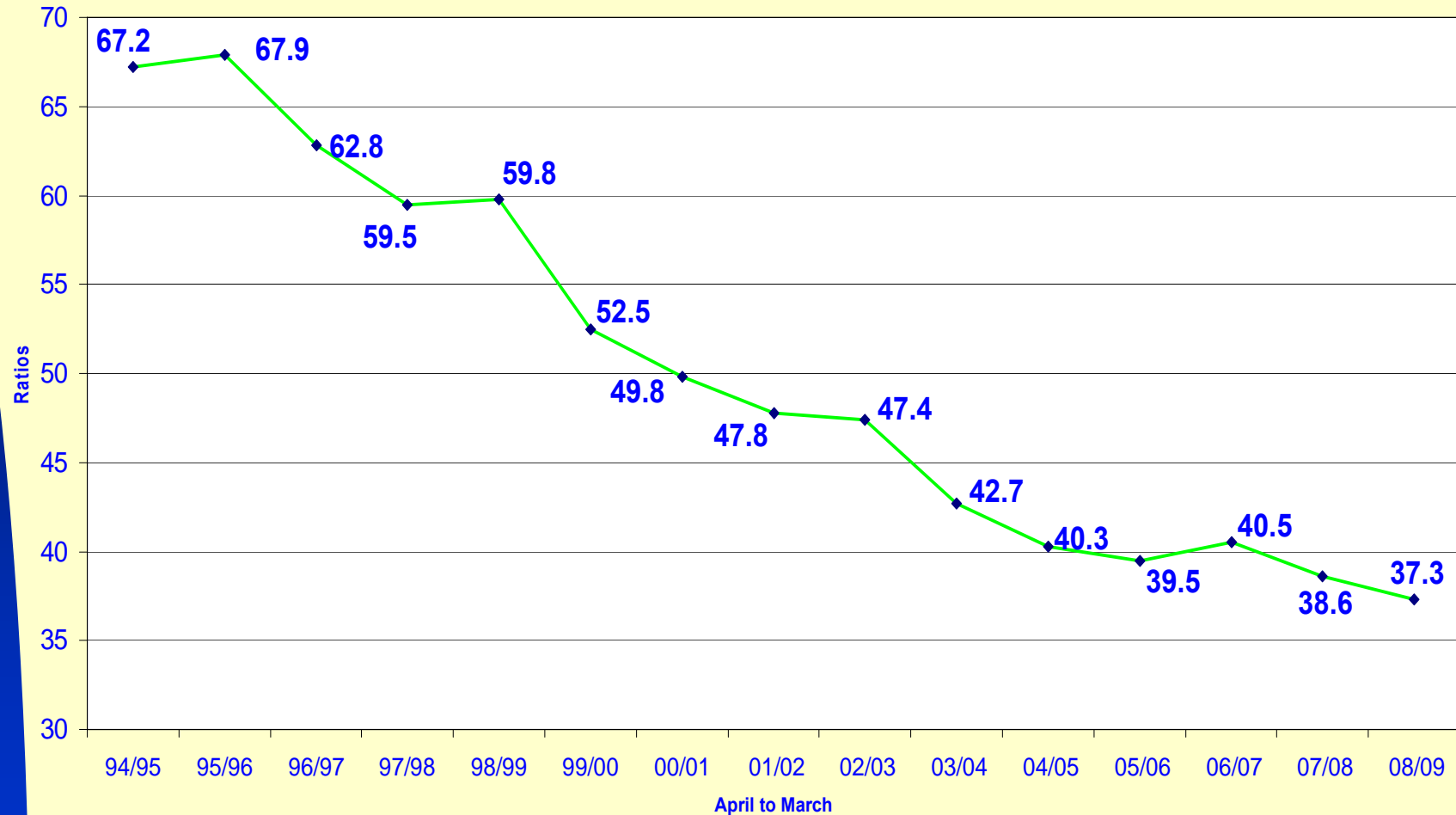
685 185 (32,7%) - ONE THIRD



**CONTACT CRIME IN THE RSA: 2008/2009**  
**RATIO DECREASE/INCREASE IN CONTACT CRIME IN THE RSA**  
**TOTAL DECREASE -2,8%**



# Murder ratios from 1994/1995 to 2008/2009



**Murder ratio decreased by 44,5%  
between 1994/1995 and 2008/2009**



# MURDER - ANALYSIS

---

- **Cause of death:**
  - **Stab** **54,0%**
  - **Shot** **28,0%**
  - **Hit** **14,0%**
  - **Strangulation** **2,0%**
  - **Other** **2,0%**



# Motives and circumstances associated with murder

| Category           | Reason                                     | Percentage | Subtotal |
|--------------------|--|------------|----------|
| Social behaviour   | Misunderstanding/argument                  | 50,4%      | 65,4%    |
|                    | Domestic-related                           | 7,3%       |          |
|                    | Jealousy/love triangle                     | 5,5%       |          |
|                    | Punishment                                 | 2,2%       |          |
| Criminal behaviour | Consequence of another crime               | 15,9%      | 26,3%    |
|                    | Self-defense                               | 4,5%       |          |
|                    | Retaliation                                | 2,6%       |          |
|                    | Concealment of birth                       | 0,8%       |          |
|                    | Witchcraft-related                         | 0,6%       |          |
|                    | Faction fight-related                      | 0,6%       |          |
|                    | Result of law enforcement/ in line of duty | 0,5%       |          |
|                    | Xenophobia-related                         | 0,4%       |          |
|                    | Initiation-related                         | 0,4%       |          |
| Group behaviour    | Vigilantism                                | 4,8%       | 6,9%     |
|                    | Gang-related                               | 1,2%       |          |
|                    | Taxi violence                              | 0,9%       |          |
| Accidents          | All accidental killings                    | 1,5%       | 1,5%     |
| Total              |  | 100,0%     | 100,0%   |



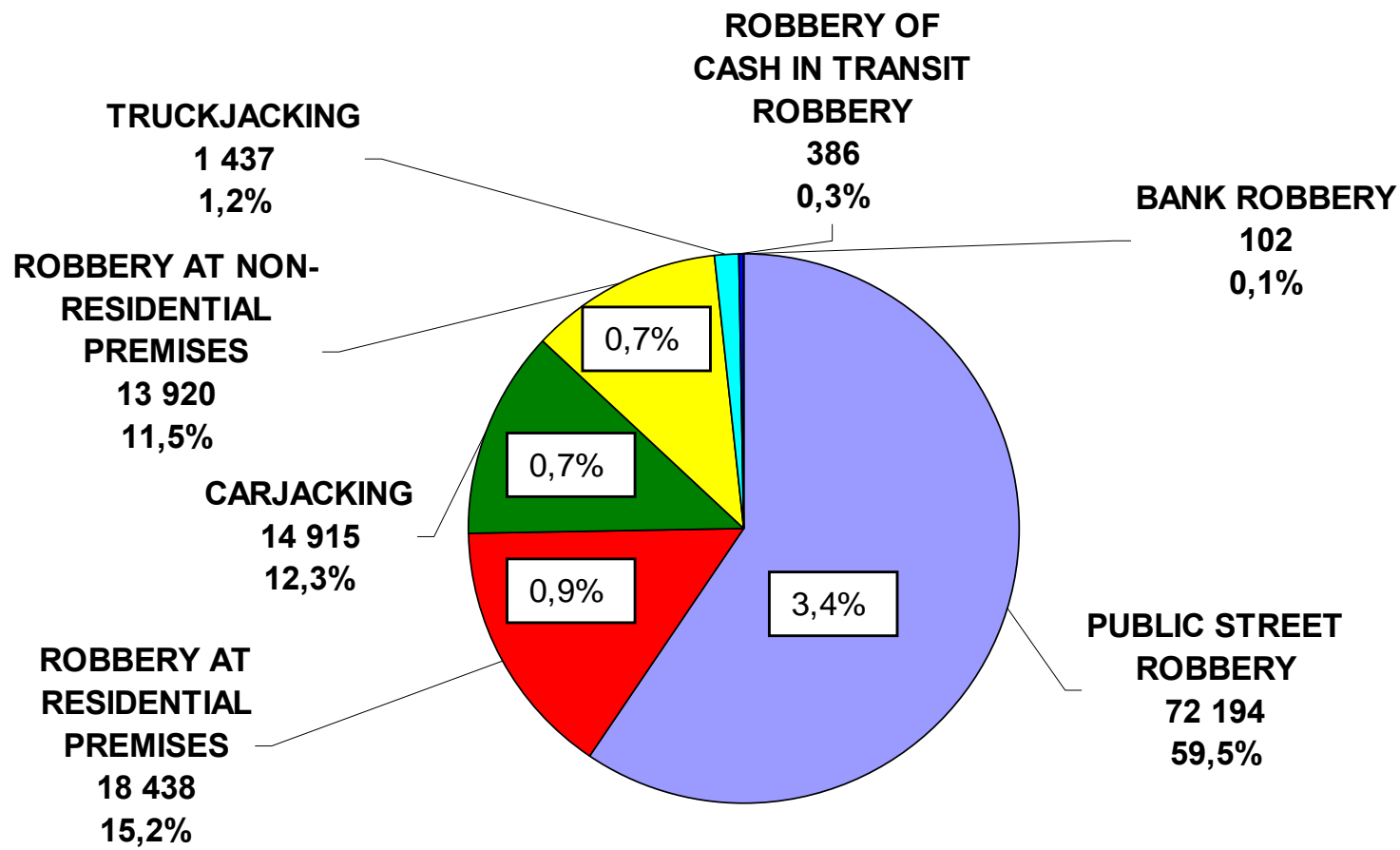


# Registered cases and verdicts

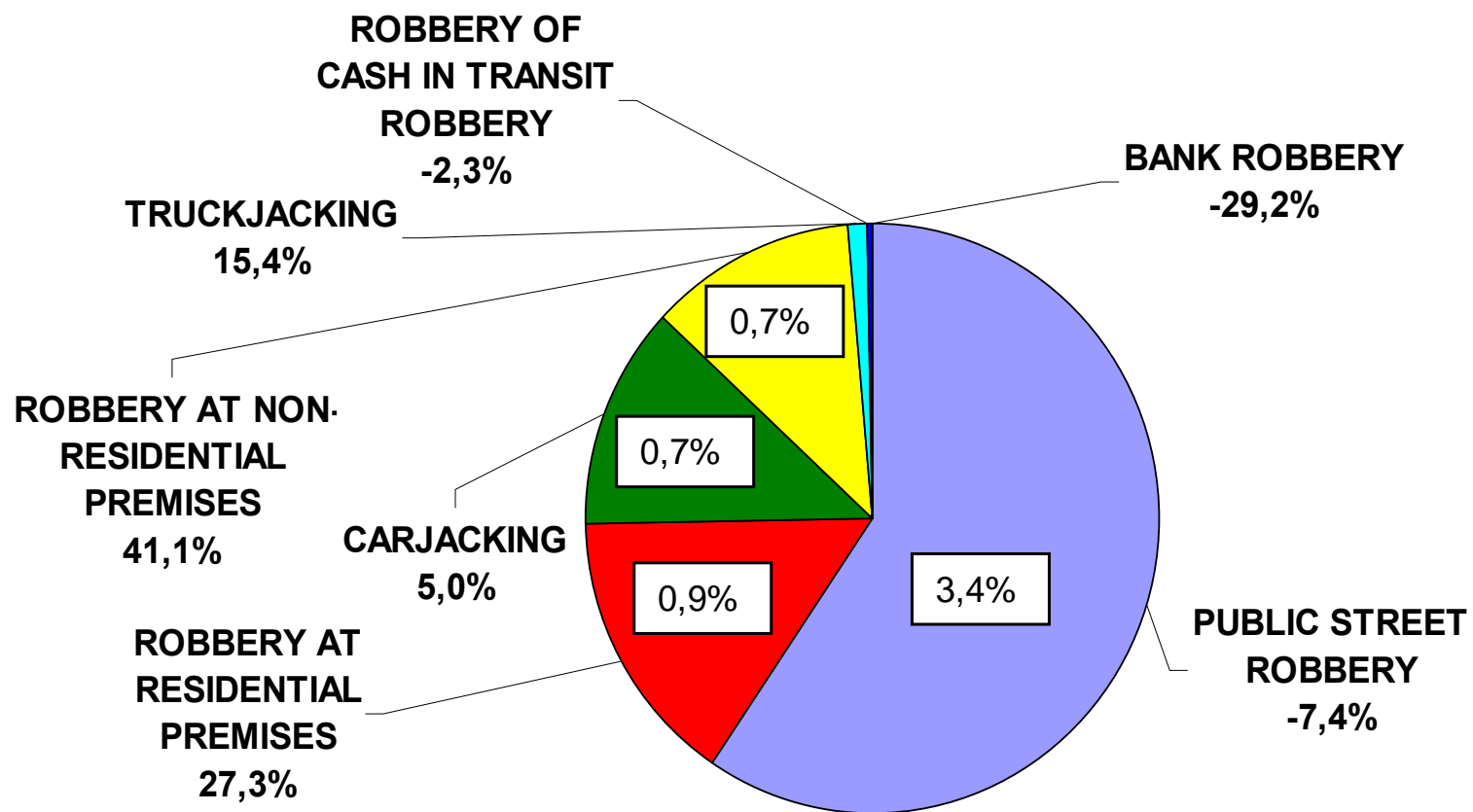
| Crime category   | Corresponded with original registration | Verdicts eventually obtained |
|------------------|---|------------------------------|
| Murder           | 56,9%                                   | Culpable homicide: 34,6%     |
|                  |   | Assault GBH: 5,7%            |
| Attempted murder | 58,7%                                   | Assault GBH: 25,0%           |
|                  |   | Firearm related: 6,7%        |



**DIFFERENT SUBCATEGORIES OF AGGRAVATED ROBBERY  
DURING THE 2008/2009 FINANCIAL YEAR (TOTAL CASES 121 392)**



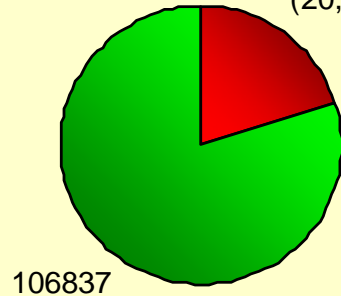
**DIFFERENT SUBCATEGORIES OF AGGRAVATED ROBBERY: 2008/2009  
RATIO DECREASE/INCREASE IN DIFFERENT SUBCATEGORIES OF  
AGGRAVATED ROBBERY: 2008/2009**



# TRIO CRIMES

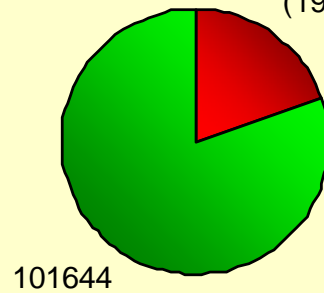
**03/04**

26821,  
(20,1%)



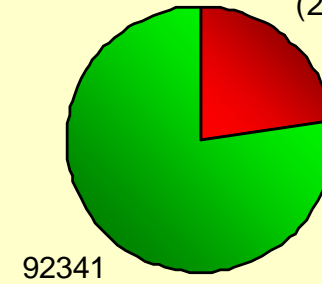
**04/05**

25145,  
(19,8%)



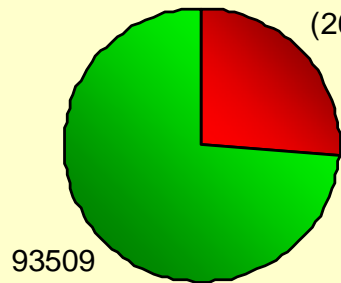
**05/06**

27385,  
(22,9%)



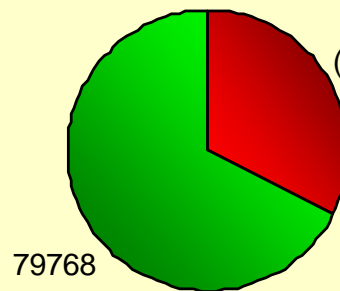
**06/07**

33049,  
(26,1%)



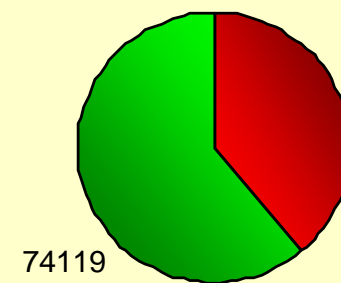
**07/08**

38544,  
(32,6%)

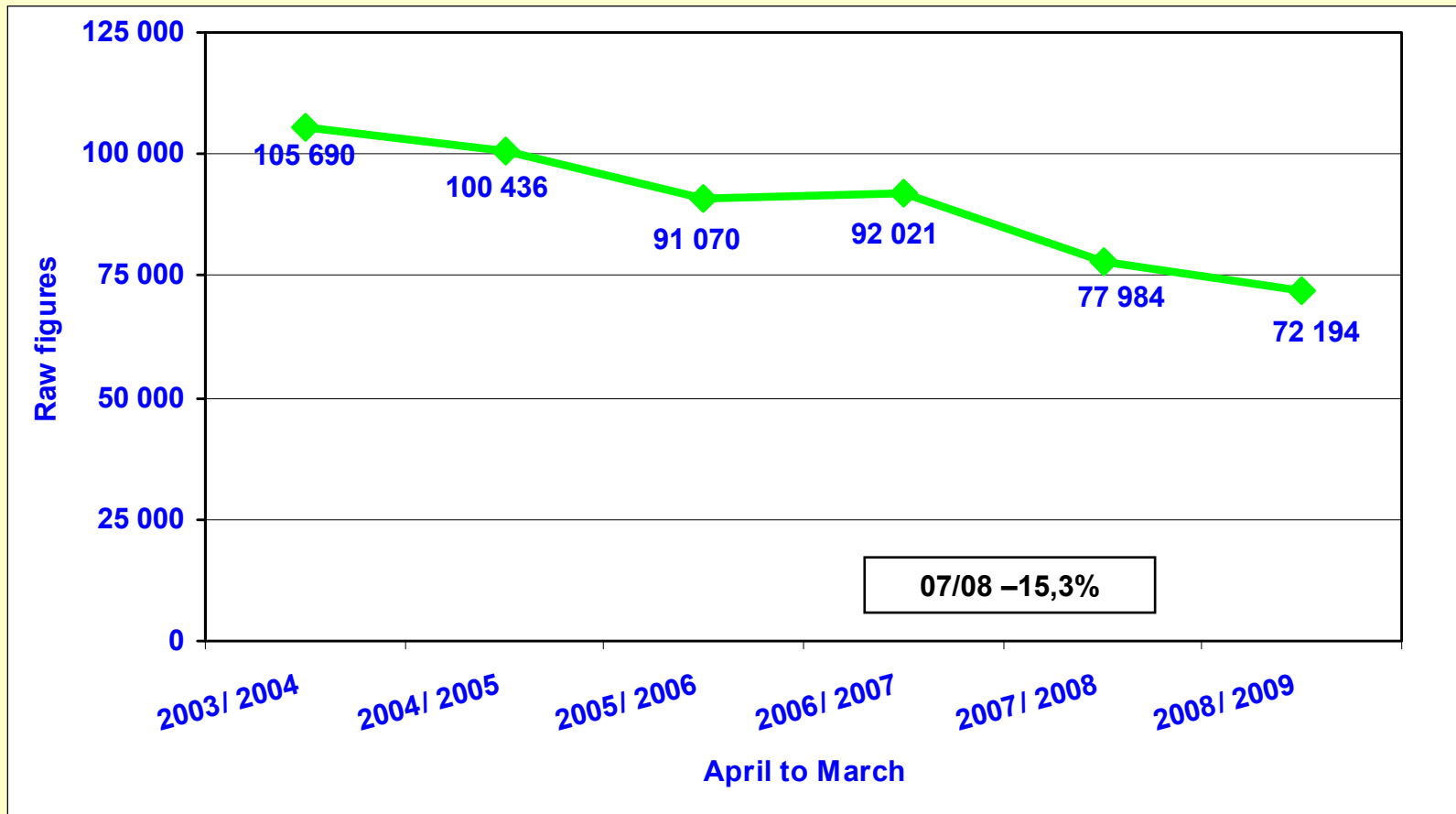


**08/09**

47273,  
(38,9%)



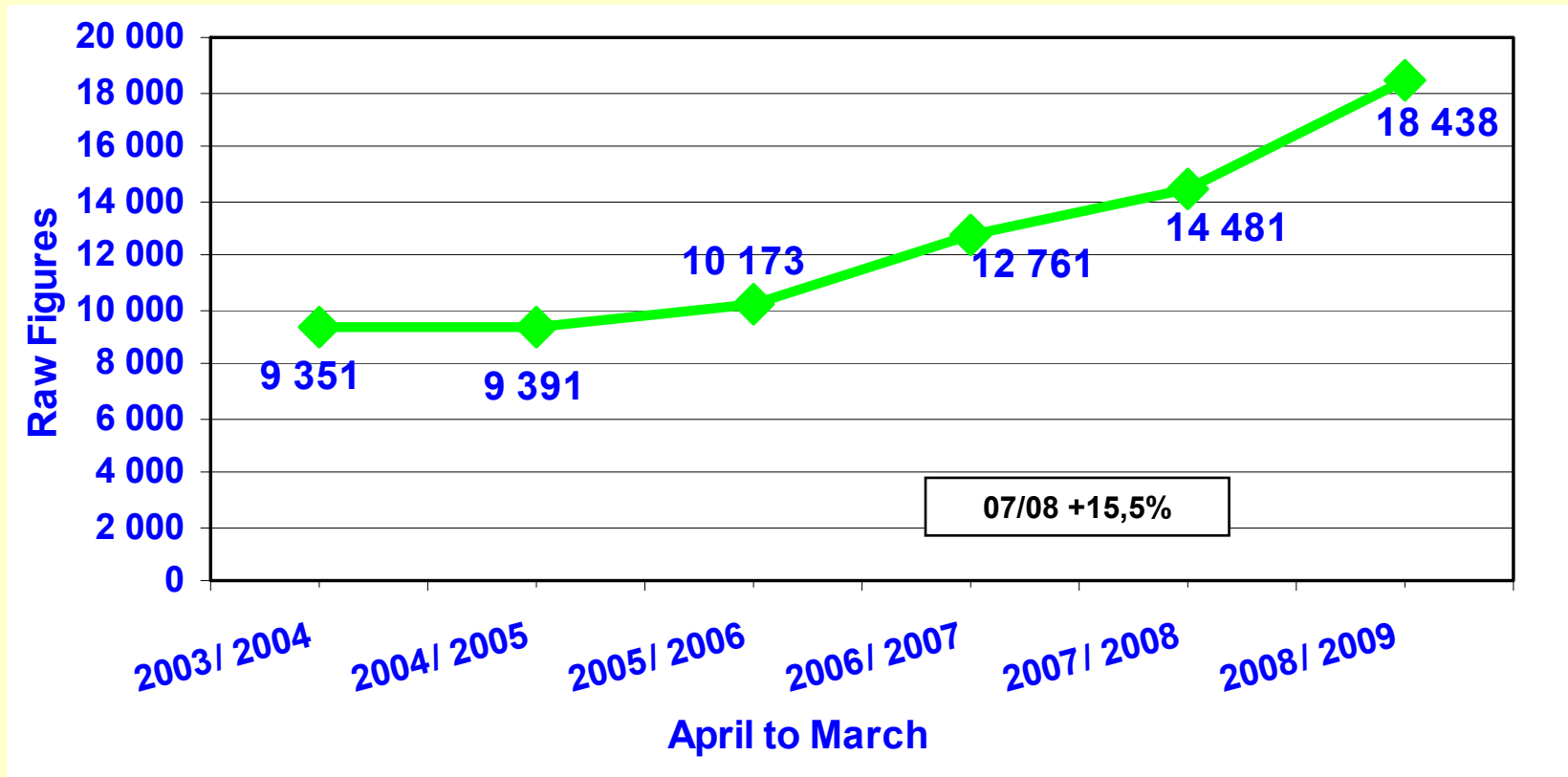
# Public or Street robbery



**Public or street robbery decreased by 7,4% (-5 790) between 2007/2008 and 2008/2009**



# Robbery at residential premises



**Robbery at residential premises increased by  
27,3% (3 957)  
between 2007/2008 and 2008/2009**

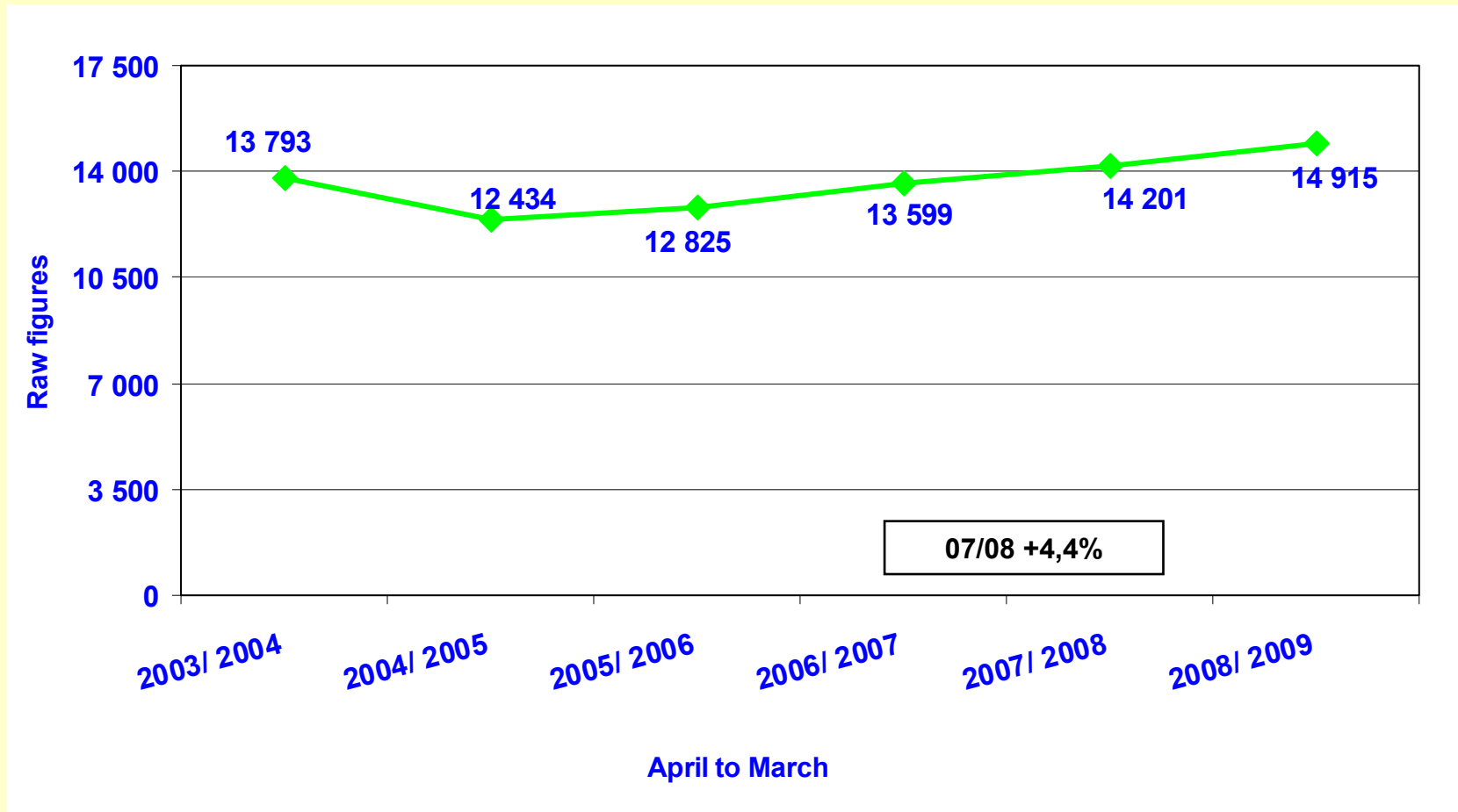


**TABLE 2****Robbery at residential premises sorted from lowest to highest increases  
between 2007/2008 and 2008/2009**

| <b>Policing Area</b> | <b>2007/2008</b> | <b>2008/2009</b> | <b>Difference</b> | <b>% Inc. or Dec.</b> |
|----------------------|------------------|------------------|-------------------|-----------------------|
| <b>RSA</b>           | <b>14 481</b>    | <b>18 438</b>    | <b>3 957</b>      | <b>27.3%</b>          |
|                      |                  |                  |                   |                       |
| <b>Gauteng</b>       | <b>7 314</b>     | <b>8 122</b>     | <b>808</b>        | <b>11.0%</b>          |
| <b>North West</b>    | <b>821</b>       | <b>987</b>       | <b>166</b>        | <b>20.2%</b>          |
| <b>Western Cape</b>  | <b>796</b>       | <b>974</b>       | <b>178</b>        | <b>22.4%</b>          |
| <b>Kwazulu-Natal</b> | <b>3 479</b>     | <b>4 601</b>     | <b>1 122</b>      | <b>32.3%</b>          |
| <b>Mpumalanga</b>    | <b>862</b>       | <b>1 188</b>     | <b>326</b>        | <b>37.8%</b>          |
| <b>Limpopo</b>       | <b>319</b>       | <b>514</b>       | <b>195</b>        | <b>61.1%</b>          |
| <b>Free State</b>    | <b>215</b>       | <b>490</b>       | <b>275</b>        | <b>127.9%</b>         |
| <b>Eastern Cape</b>  | <b>663</b>       | <b>1 517</b>     | <b>854</b>        | <b>128.8%</b>         |
| <b>Northern Cape</b> | <b>12</b>        | <b>45</b>        | <b>33</b>         | <b>275.0%</b>         |



# Carjacking



**Carjacking increased by 5,0% (714)  
between 2007/2008 and 2008/2009**



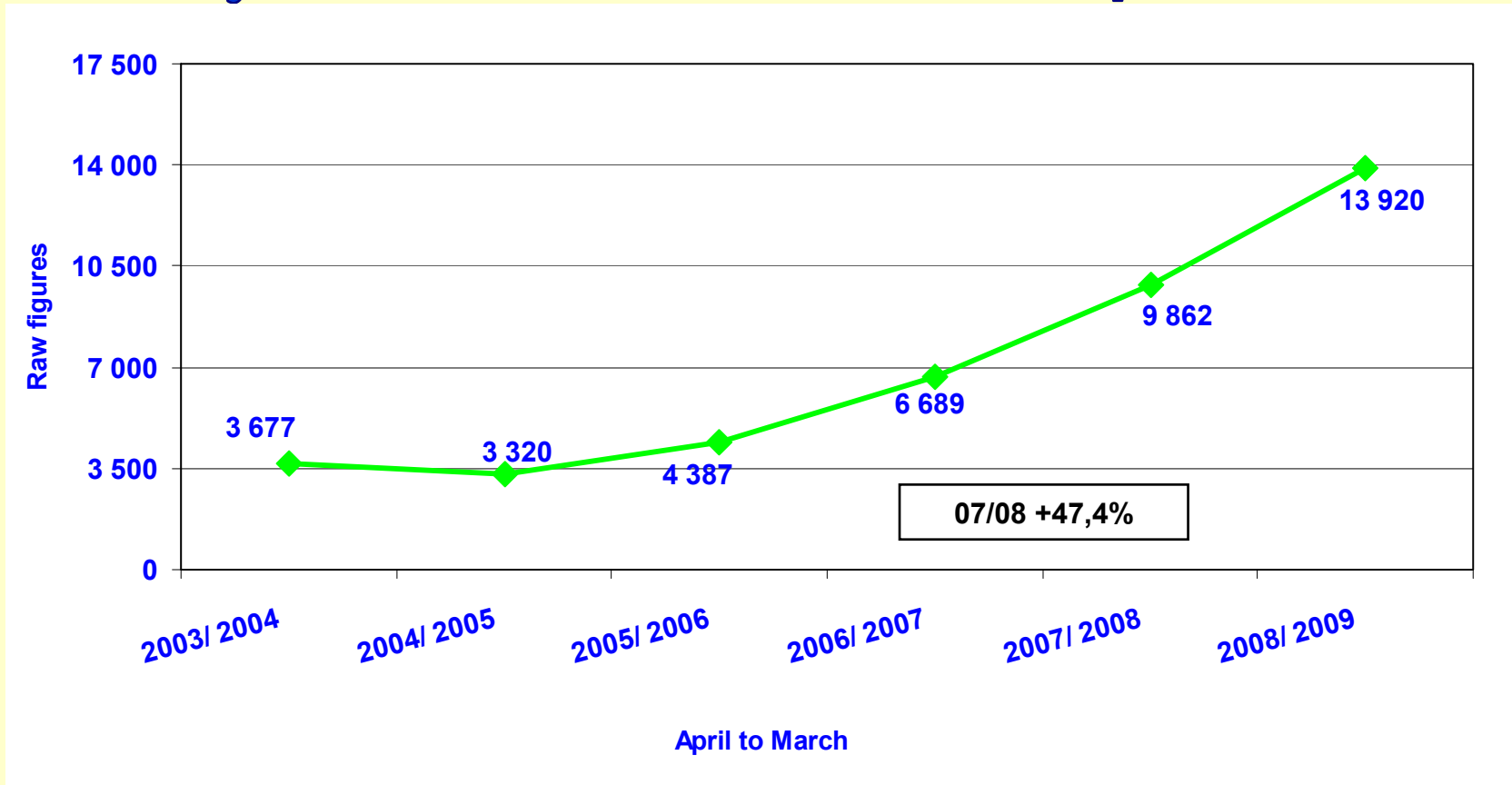


**Carjacking sorted from highest decreases to highest increases  
between 2007/2008 and 2008/2009.** **TABLE 4**

| Policing Area | 2007/2008 | 2008/2009 | Difference | % Inc. or Dec. |
|---------------|-----------|-----------|------------|----------------|
| RSA           | 14 201    | 14 915    | 714        | 5.0%           |
|               |           |           |            |                |
| Western Cape  | 923       | 698       | - 225      | -24.4%         |
| North West    | 291       | 288       | - 3        | -1.0%          |
| Gauteng       | 7 466     | 7 626     | 160        | 2.1%           |
| KwaZulu-Natal | 3 889     | 4 062     | 173        | 4.4%           |
| Eastern Cape  | 604       | 706       | 102        | 16.9%          |
| Northern Cape | 5         | 7         | 2          | 40.0%          |
| Limpopo       | 203       | 289       | 86         | 42.4%          |
| Mpumalanga    | 664       | 984       | 320        | 48.2%          |
| Free State    | 156       | 255       | 99         | 63.5%          |



# Robbery at non-residential premises



**Robbery at non-residential premises increased by 41,1% (4 058) between 2007/2008 and 2008/2009**

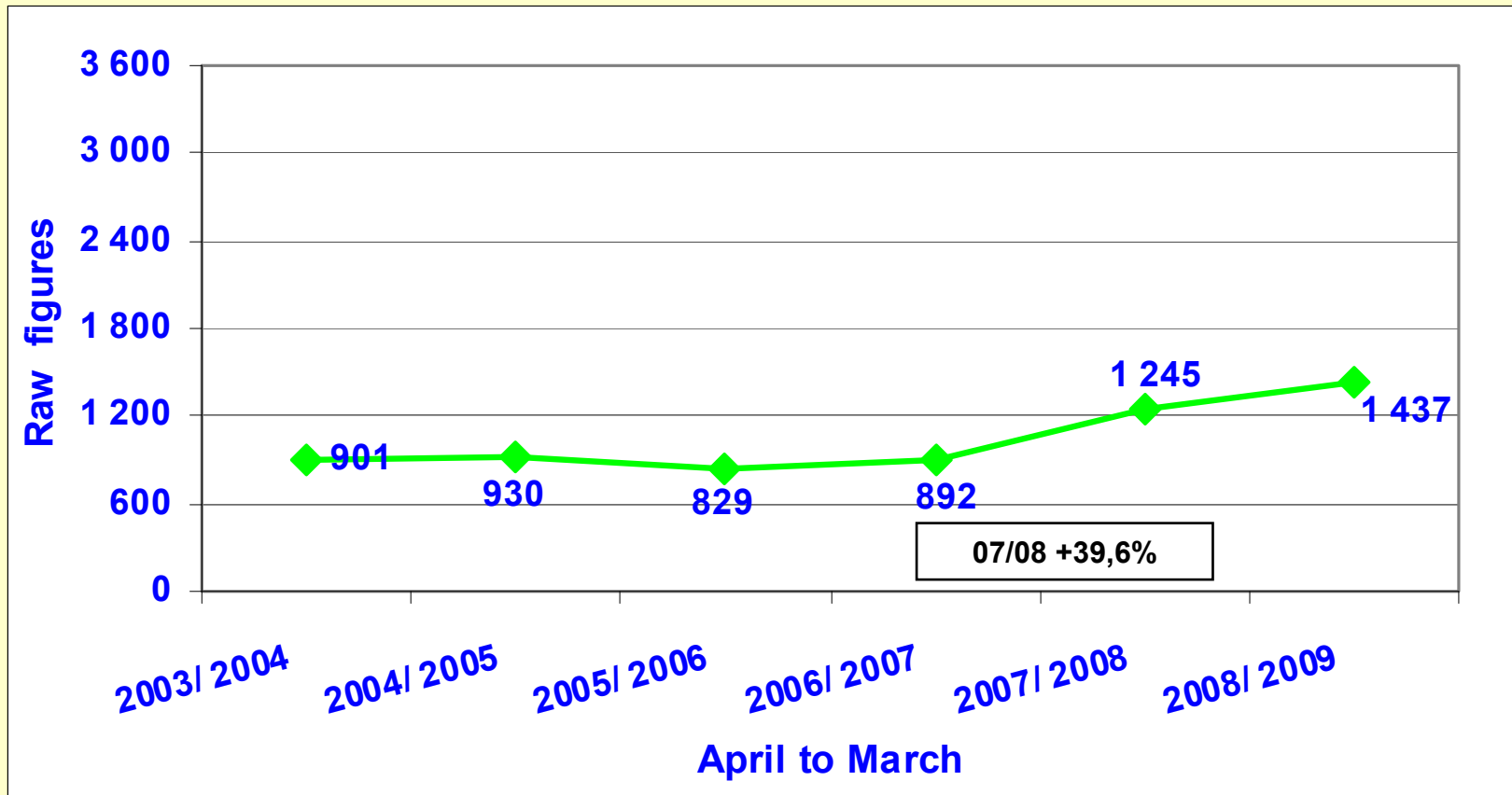


**Robbery at non-residential premises sorted from lowest to highest increases between 2007/2008 and 2008/2009**

| <b>Policing Area</b> | <b>2007/2008</b> | <b>2008/2009</b> | <b>Difference</b> | <b>%Inc. or Dec.</b> |
|----------------------|------------------|------------------|-------------------|----------------------|
| <b>RSA</b>           | <b>9 862</b>     | <b>13 920</b>    | <b>4 058</b>      | <b>41.1%</b>         |
|                      |                  |                  |                   |                      |
| <b>Gauteng</b>       | <b>5 098</b>     | <b>6 216</b>     | <b>1 118</b>      | <b>21.9%</b>         |
| <b>KwaZulu-Natal</b> | <b>1 923</b>     | <b>2 499</b>     | <b>576</b>        | <b>30.0%</b>         |
| <b>North West</b>    | <b>747</b>       | <b>1 043</b>     | <b>296</b>        | <b>39.6%</b>         |
| <b>Western Cape</b>  | <b>635</b>       | <b>1 058</b>     | <b>423</b>        | <b>66.6%</b>         |
| <b>Limpopo</b>       | <b>314</b>       | <b>529</b>       | <b>215</b>        | <b>68.5%</b>         |
| <b>Eastern Cape</b>  | <b>488</b>       | <b>851</b>       | <b>363</b>        | <b>74.4%</b>         |
| <b>Northern Cape</b> | <b>54</b>        | <b>121</b>       | <b>67</b>         | <b>124.1%</b>        |
| <b>Free State</b>    | <b>298</b>       | <b>785</b>       | <b>487</b>        | <b>163.4%</b>        |
| <b>Mpumalanga</b>    | <b>305</b>       | <b>818</b>       | <b>513</b>        | <b>168.2%</b>        |



# Truckjacking



The truckjacking increased by 15,4% (192) between 2007/2008 and 2008/2009

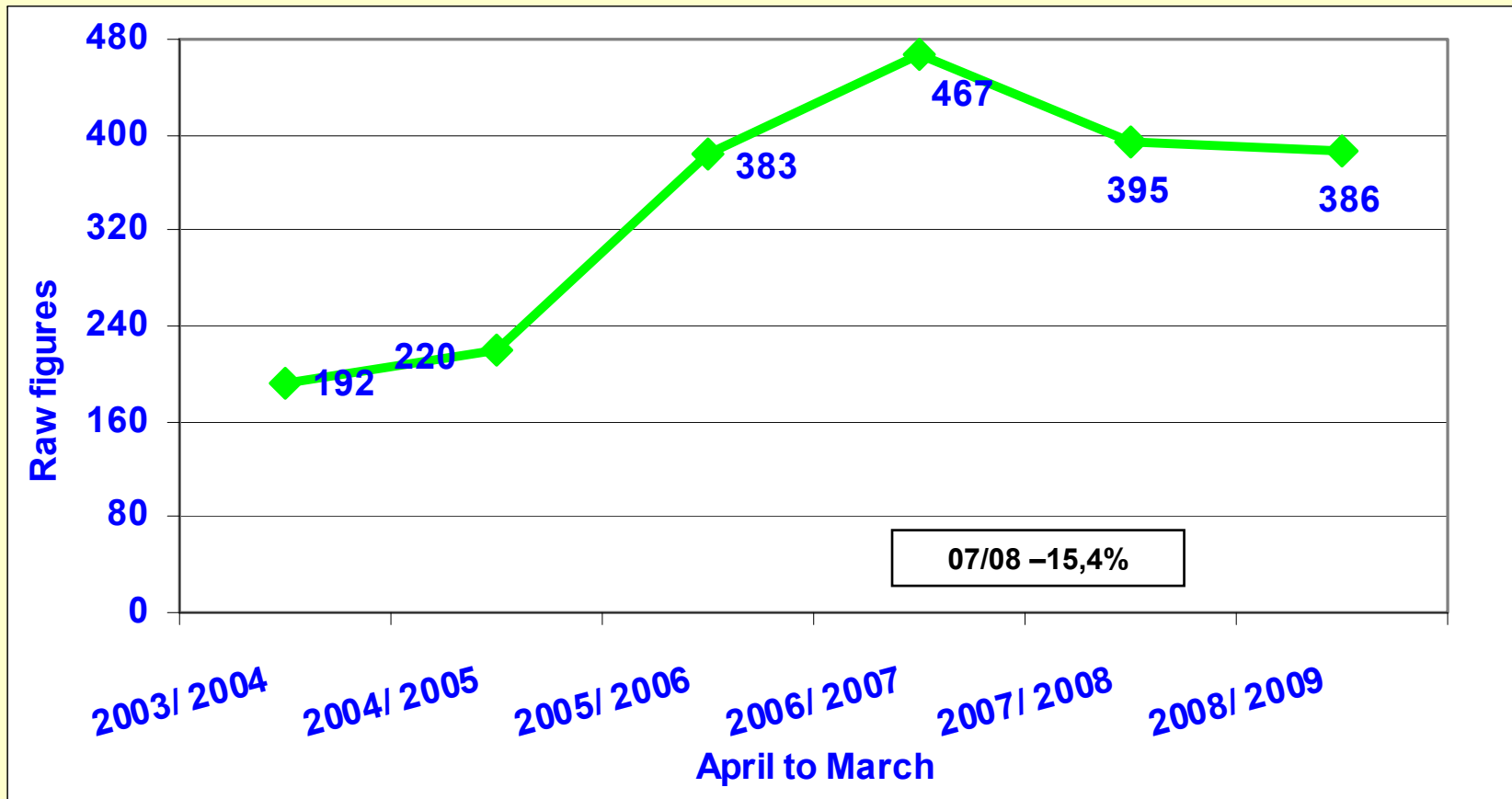


## Truckjacking sorted from highest decreases to highest increases between 2007/2008 and 2008/2009

| Province      | 2007/2008   | 2008/2009    | Difference | %Inc. or Dec. |
|---------------|-------------|--------------|------------|---------------|
| <b>RSA</b>    | <b>1245</b> | <b>1 437</b> | <b>192</b> | <b>15.4%</b>  |
|               |             |              |            |               |
| Northern Cape | 1           | 0            | - 1        | -100.0%       |
| North West    | 77          | 64           | - 13       | -16.9%        |
| KwaZulu-Natal | 133         | 133          | 0          | 0.0%          |
| Eastern Cape  | 28          | 30           | 2          | 7.1%          |
| Mpumalanga    | 151         | 172          | 21         | 13.9%         |
| Western Cape  | 23          | 27           | 4          | 17.4%         |
| Gauteng       | 754         | 891          | 137        | 18.2%         |
| Free State    | 64          | 93           | 29         | 45.3%         |
| Limpopo       | 14          | 27           | 13         | 92.9%         |



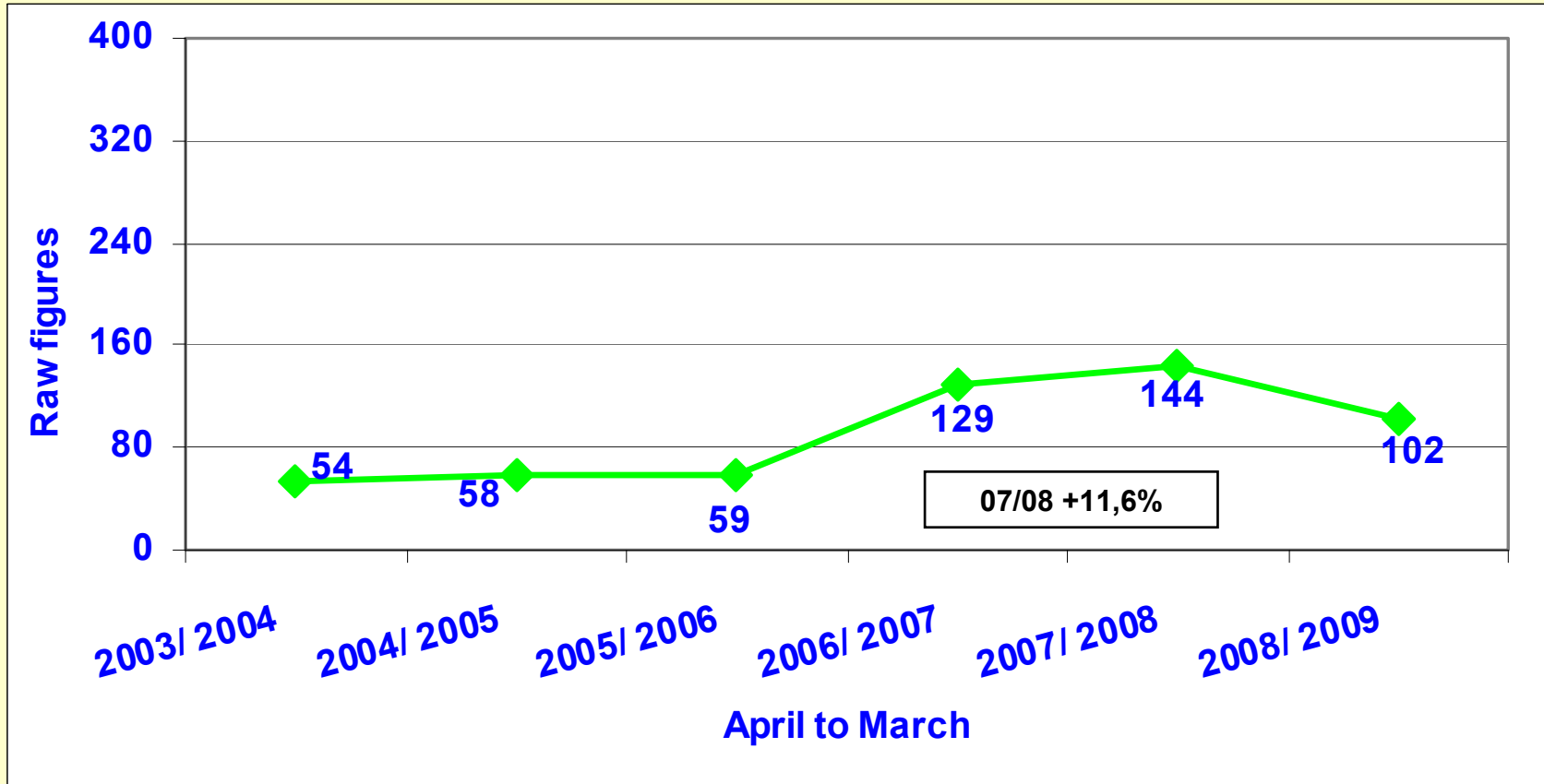
# Robbery of cash in transit



The CIT robberies decreased by 2,3% (-9) between 2007/2008 and 2008/2009



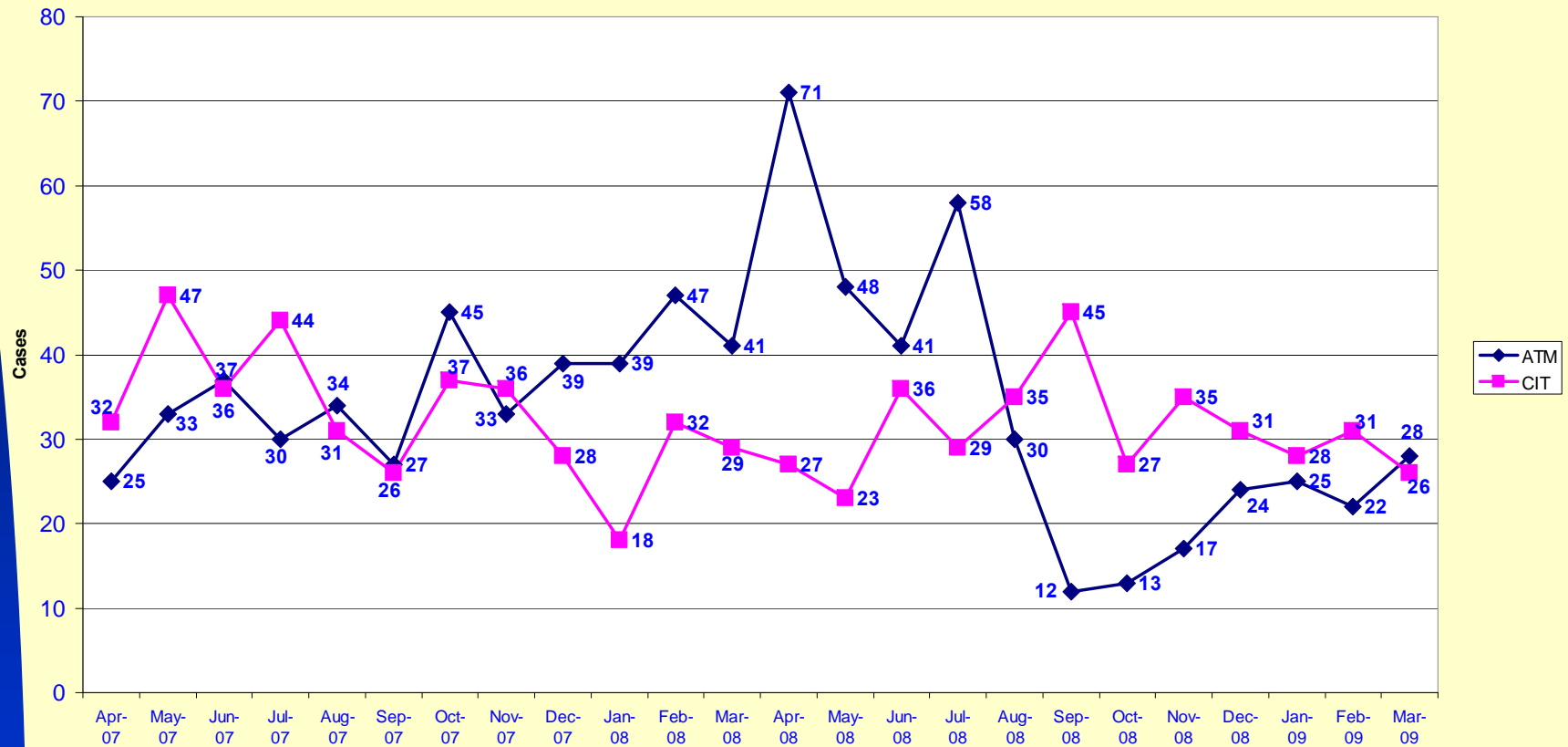
# Bank robbery



**Bank robbery decreased by -29,2% (-42)  
between 2007/2008 and 2008/2009**



# ATM BOMBINGS AND CIT ROBBERIES DURING THE 2007/2008 AND 2008/2009 FINANCIAL YEARS





# 1.2 Contact-related crimes

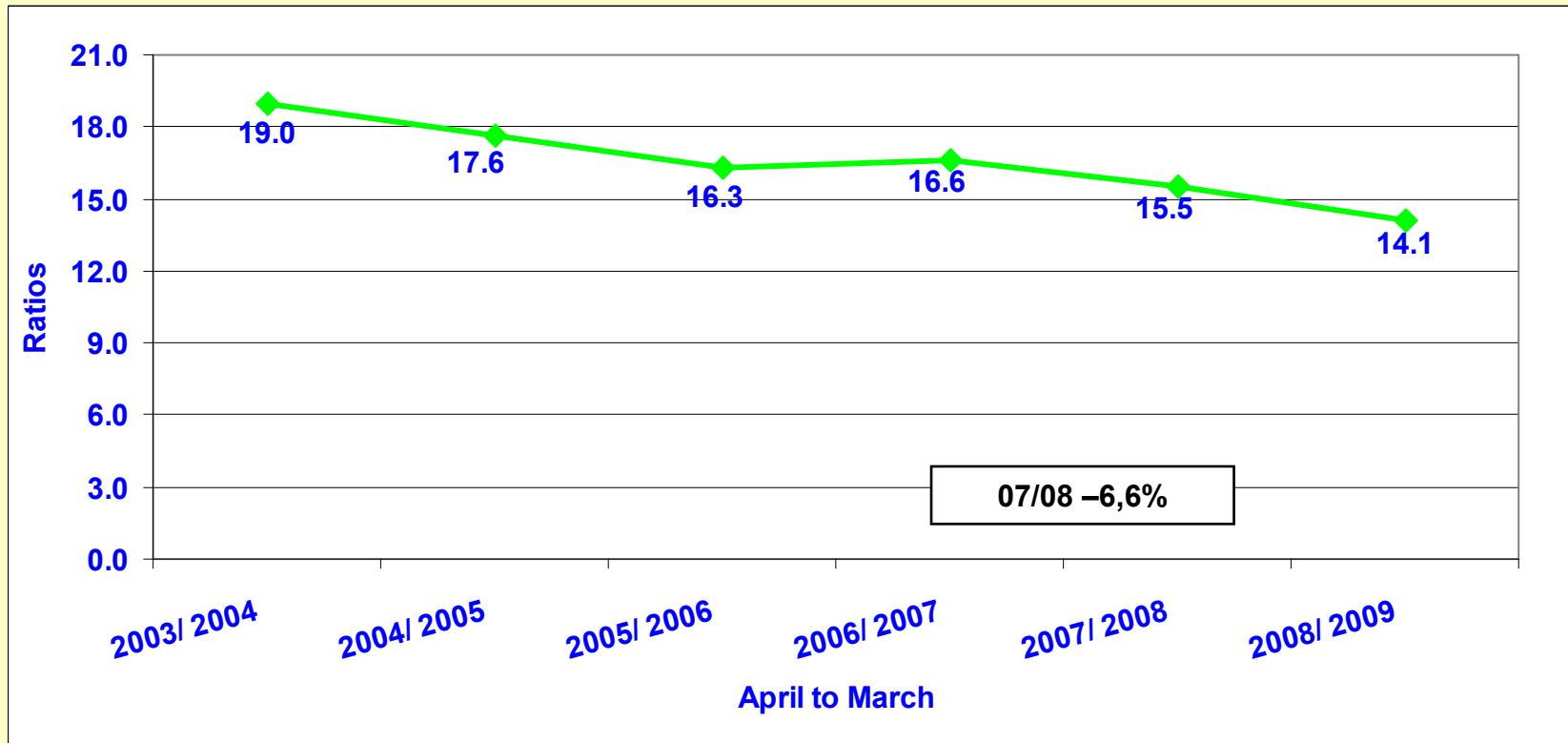
---

## 1.2.1 Arson

## 1.2.2 Malicious damage to property



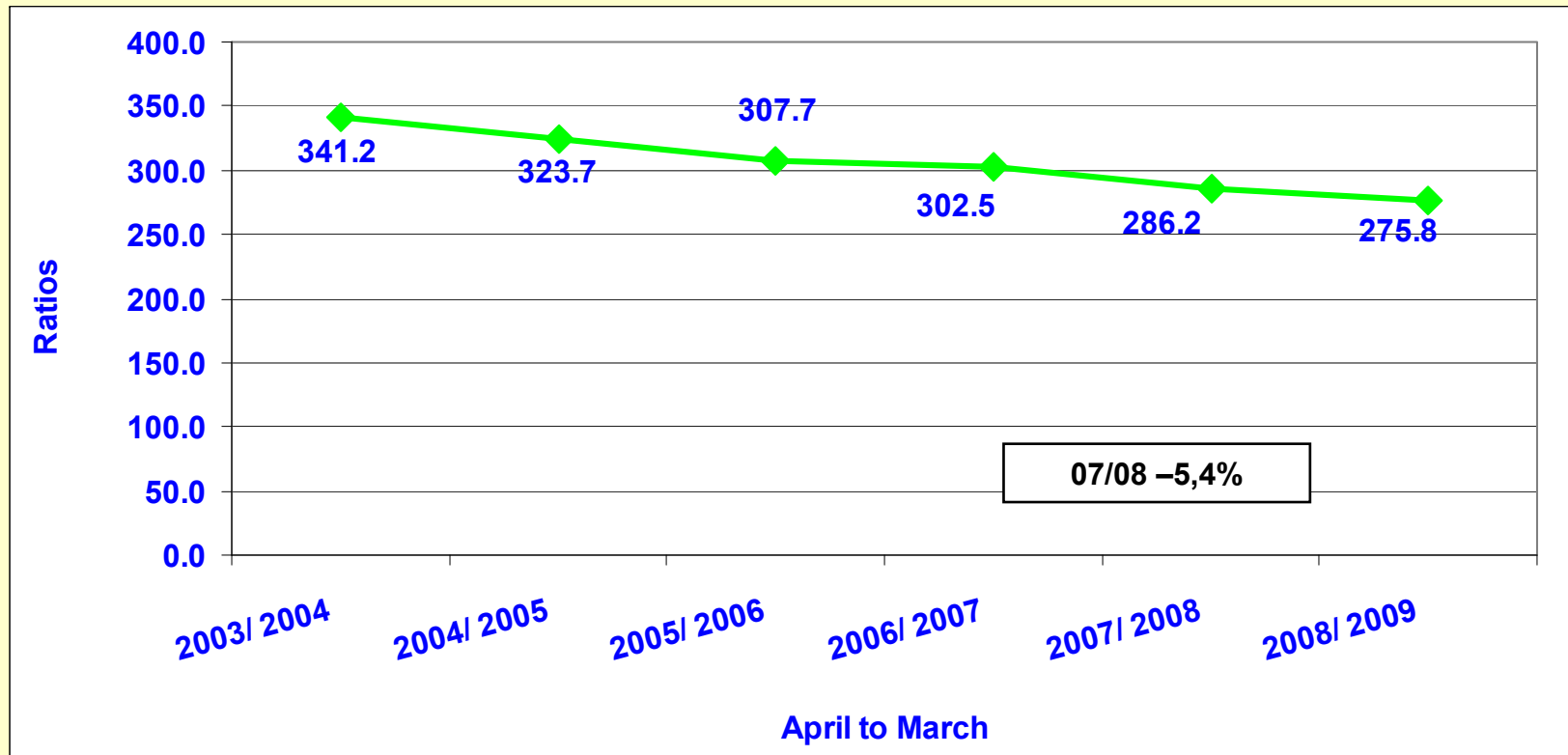
# 1.2.1 Arson



**The arson ratio decreased by 9,0% between 2007/2008 and 2008/2009**



## 1.2.2 Malicious damage to property



The malicious damage ratio decreased by 3,6% between 2007/2008 and 2008/2009



# 1.3 Property-related crimes

---

**1.3.1 Burglary at residential premises**

**1.3.2 Burglary at non-residential premises**

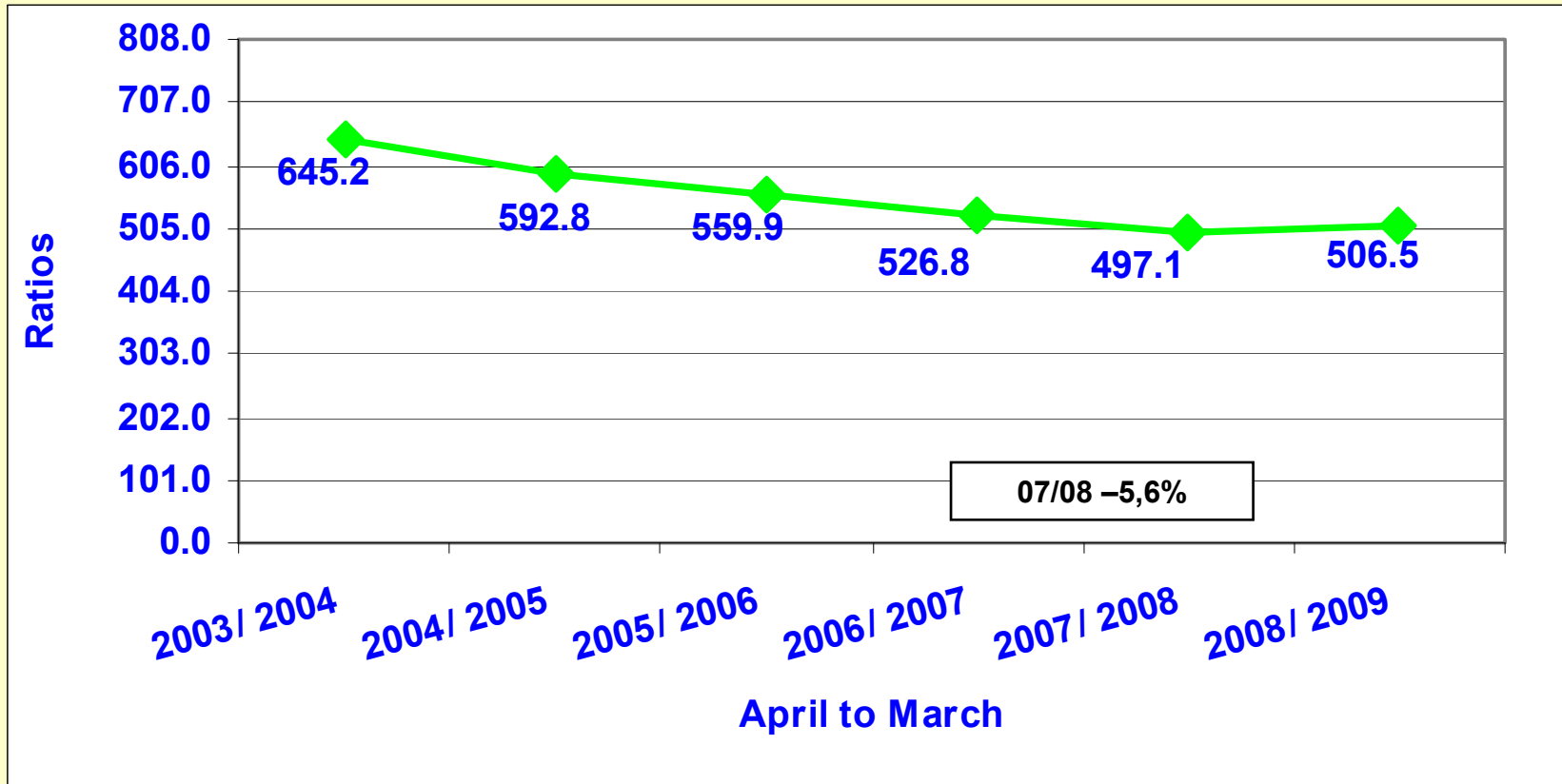
**1.3.3 Theft of motor vehicles and motorcycles**

**1.3.4 Theft out of or from motor vehicles**

**1.3.5 Stock-theft**



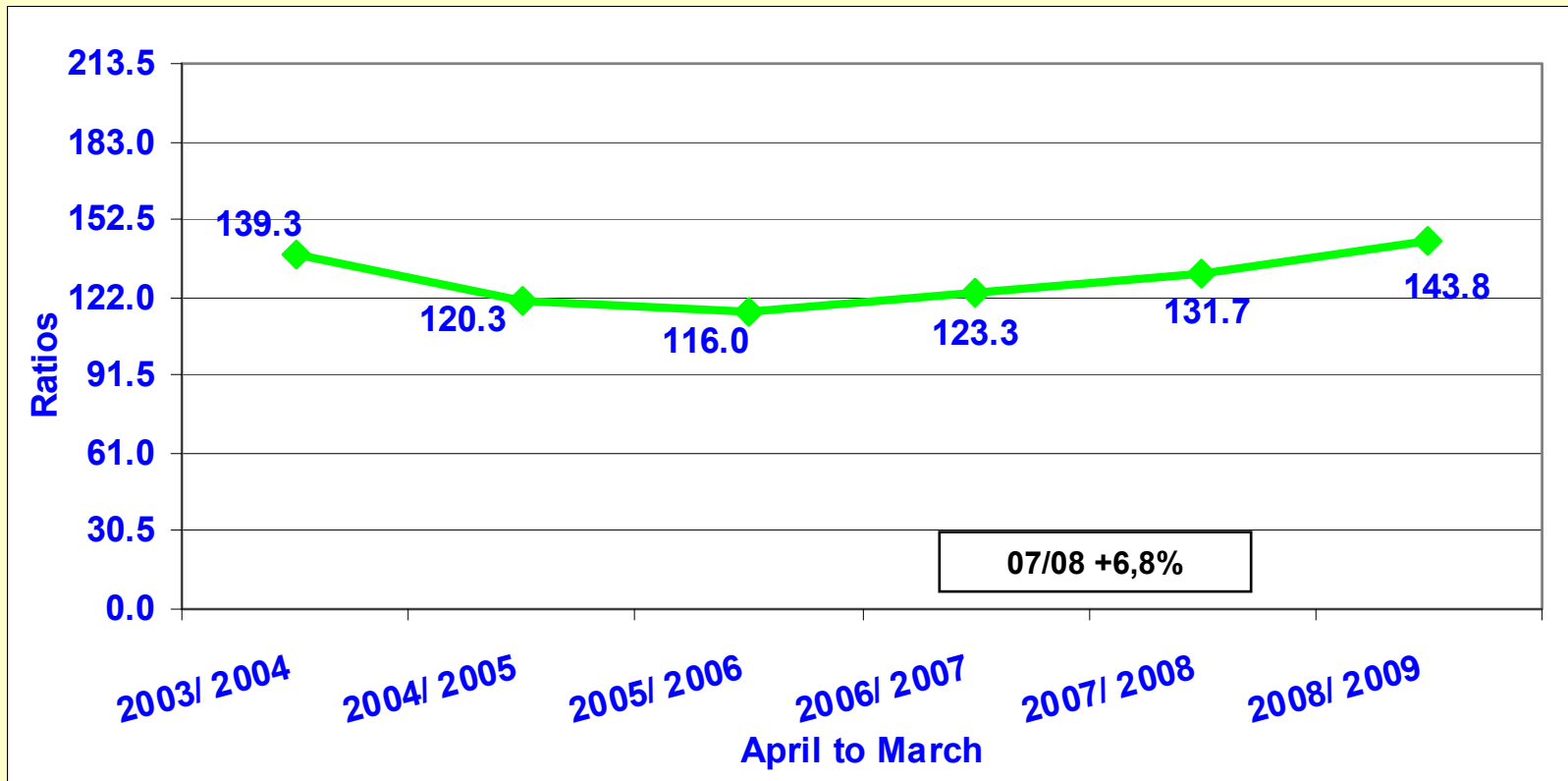
# 1.3.1 Burglary at residential premises



The burglary at residential premises ratio increased by 1,9% between 2007/2008 and 2008/2009



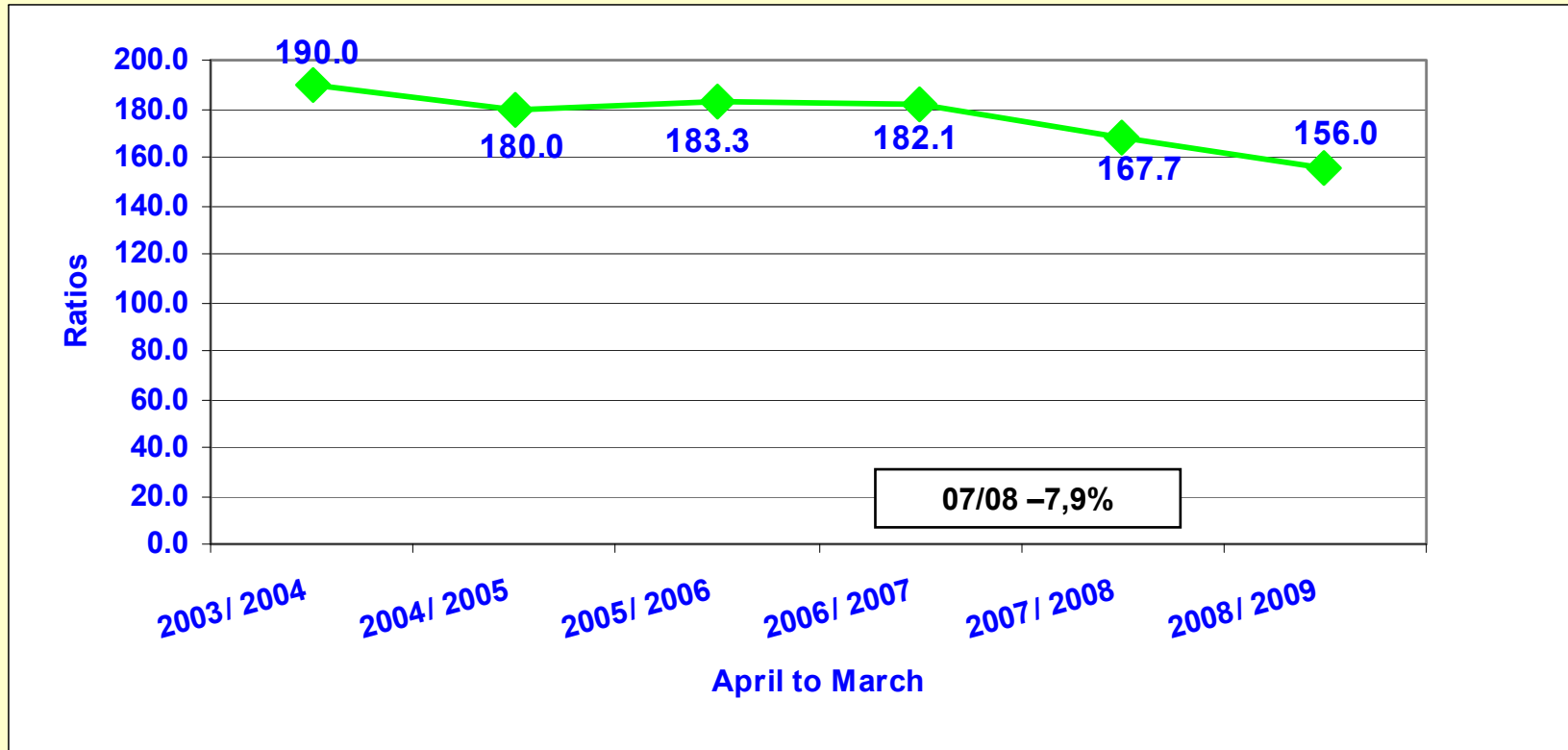
# 1.3.2 Burglary at non-residential premises



The burglary at non-residential premises ratio increased by 9,2% between 2007/2008 and 2008/2009



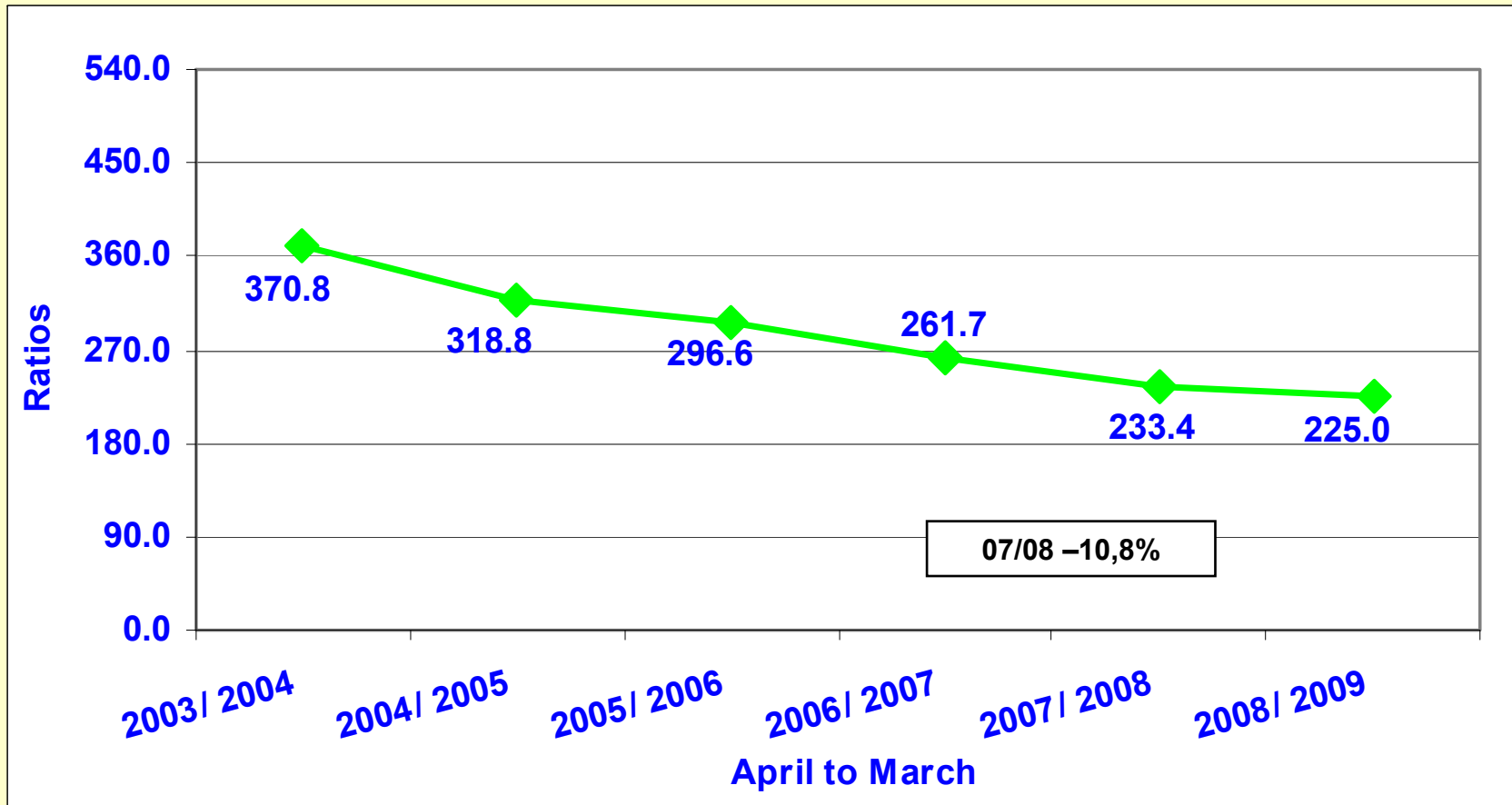
# 1.3.3 Theft of motor vehicles and motorcycles



The theft of vehicle and motorcycle ratio decreased by 7,0% between 2007/2008 and 2008/2009



# 1.3.4 Theft out of or from motor vehicles

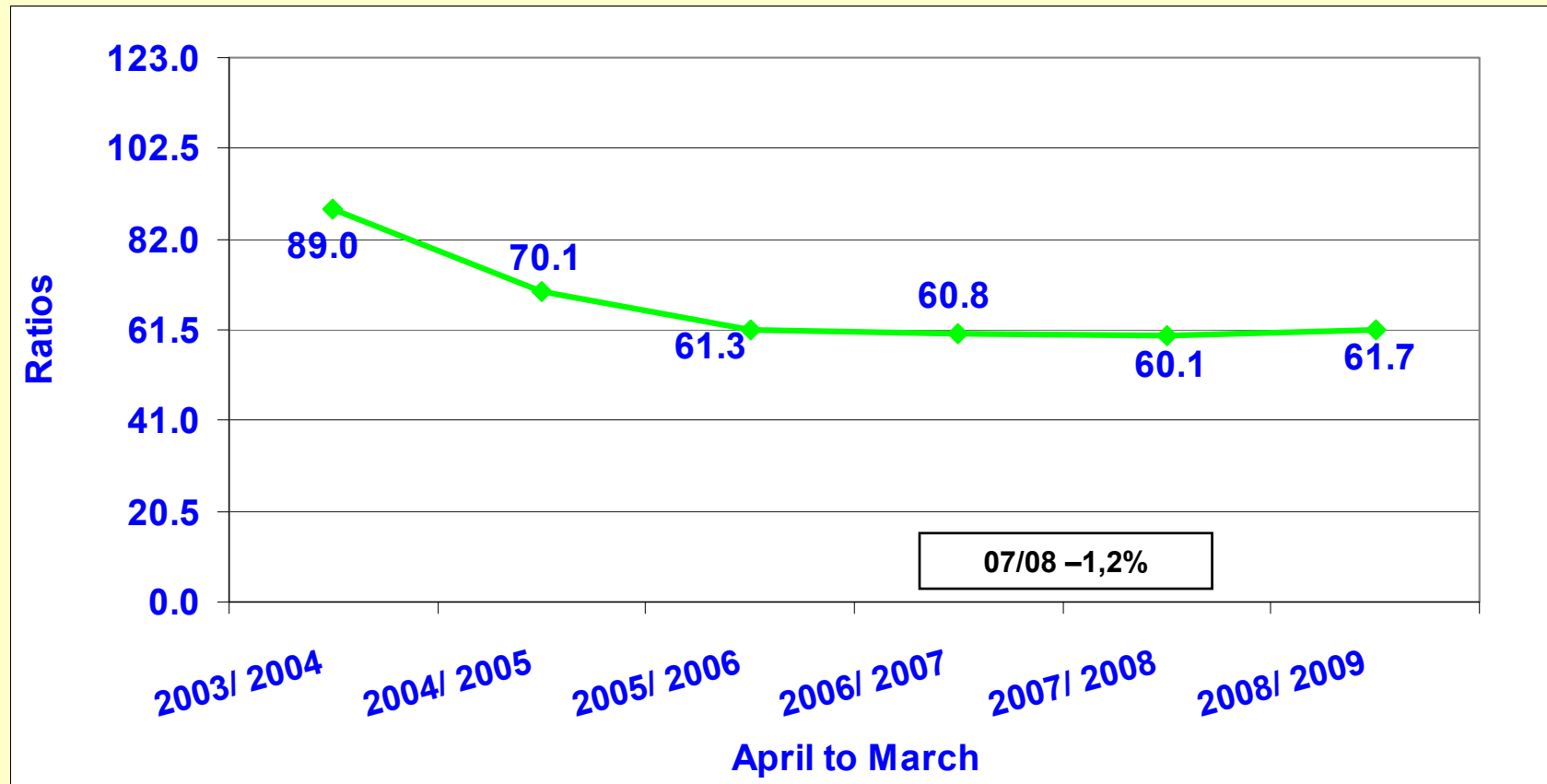


The theft out of/from vehicle ratio decreased by 3,6% between 2007/2008 and 2008/2009





# 1.3.5 Stock-theft



The stock-theft ratio increased by 2,7% between 2007/2008 and 2008/2009



# 1.4. Crimes heavily dependent on police action for detection

---

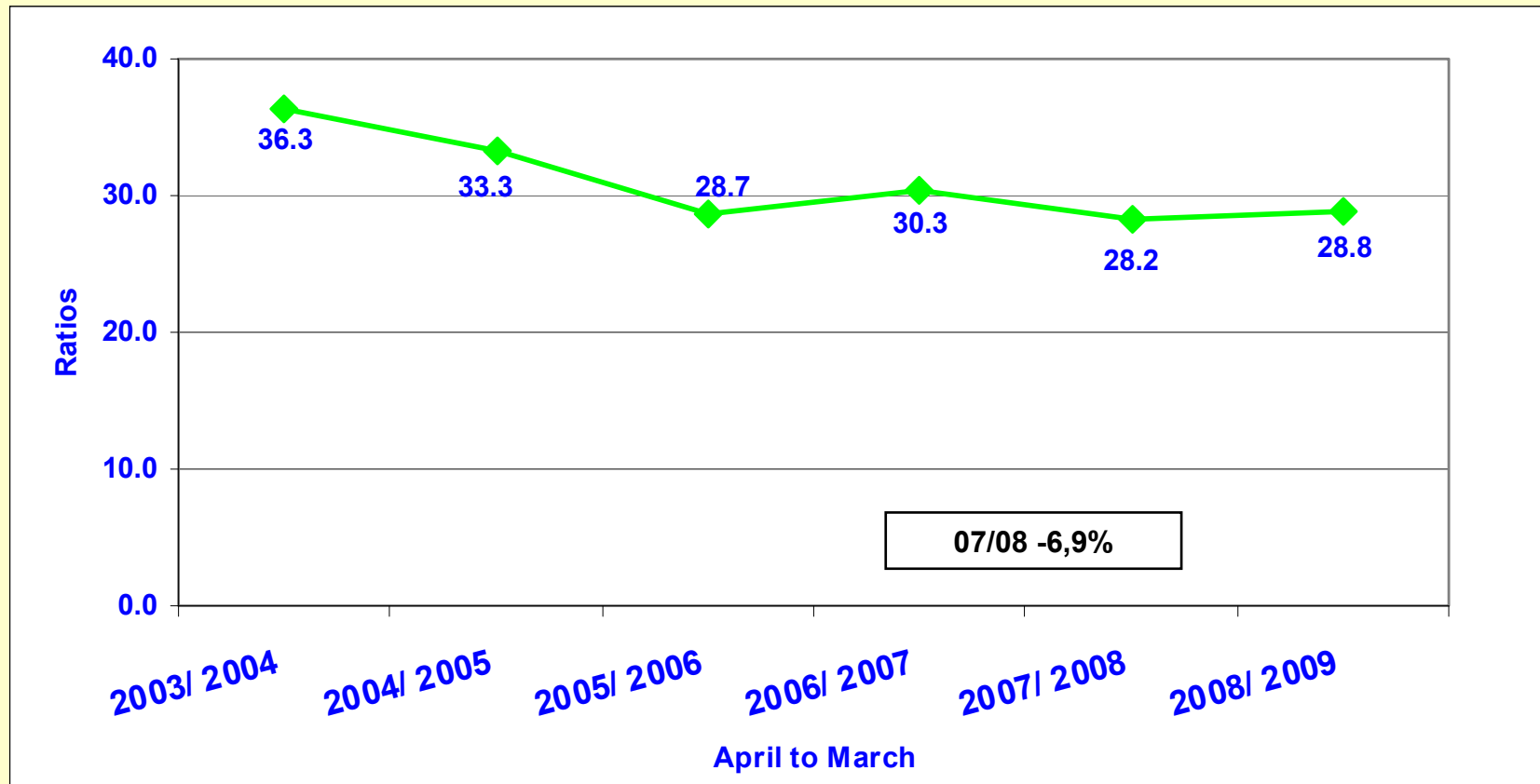
**1.4.1 Illegal possession of firearms and ammunition**

**1.4.2 Drug-related crimes**

**1.4.3 Driving under the influence of alcohol or drugs**



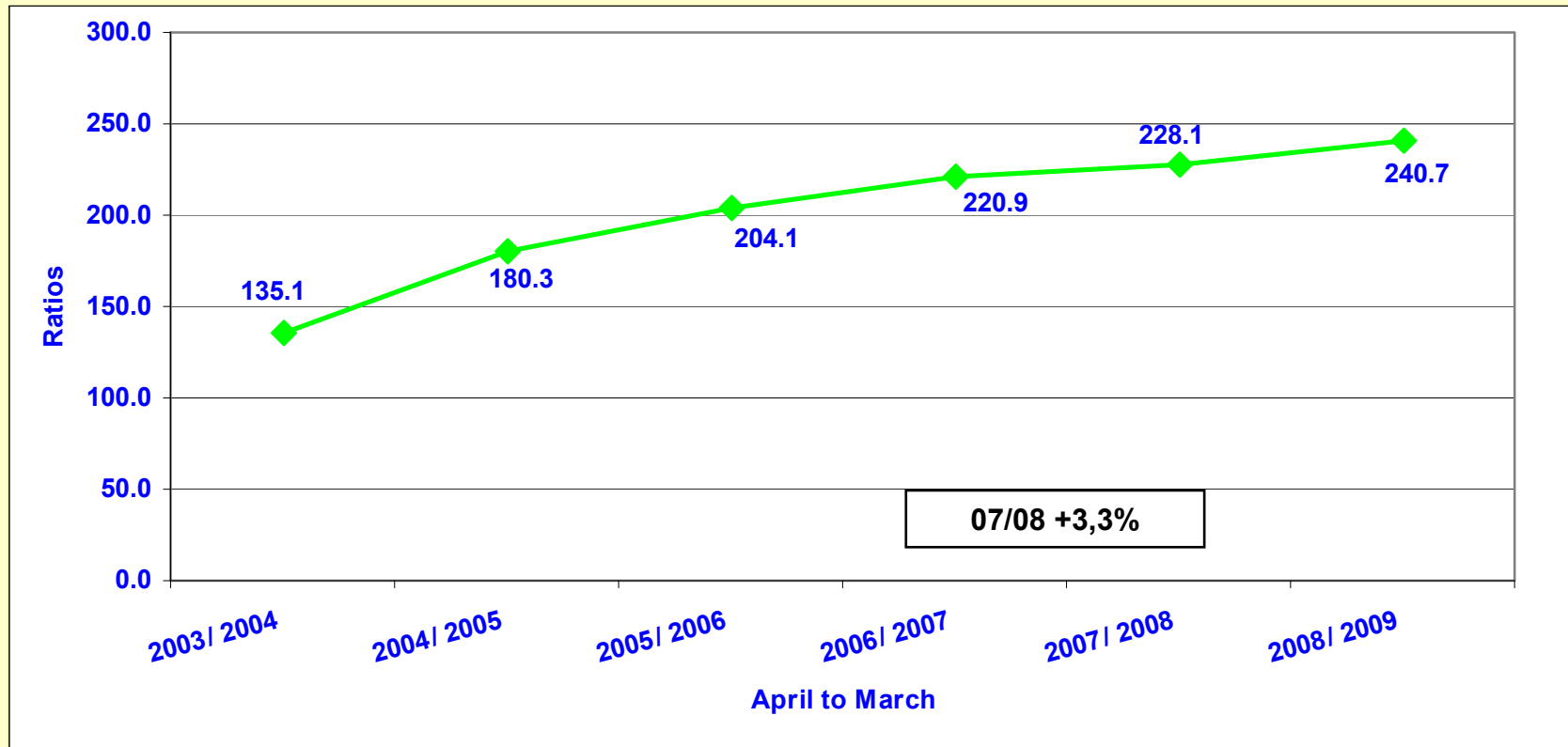
## 1.4.1 Illegal possession of firearms and ammunition



The illegal possession of firearms ratio increased by 2,1% between 2007/2008 and 2008/2009



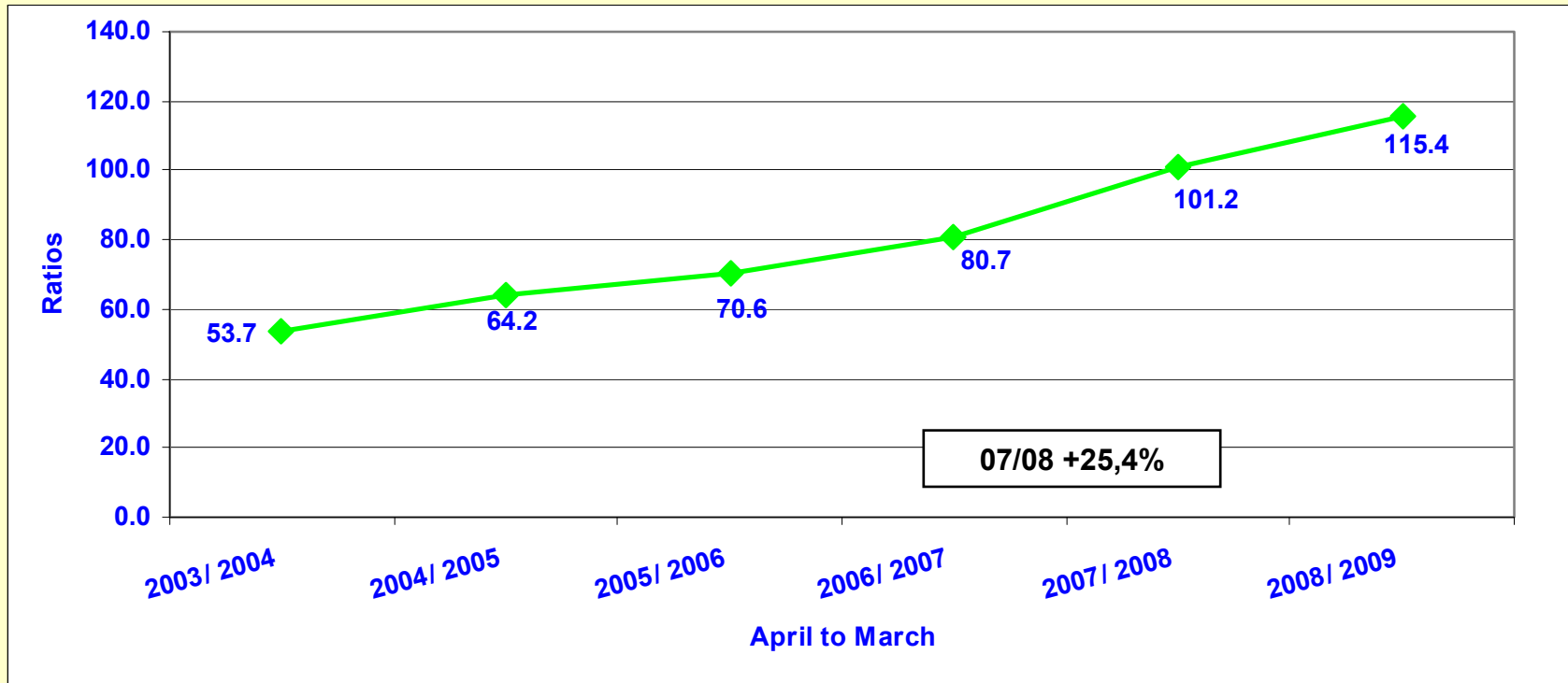
## 1.4.2 Drug-related crimes



**The drug-related crime ratio increased by 5,5% between 2007/2008 and 2008/2009**



# 1.4.3 Driving under the influence of alcohol or drugs



The driving under the influence of alcohol or drugs ratio increased by 14,0% between 2007/2008 and 2008/2009



# 1.5. Other serious crimes

---

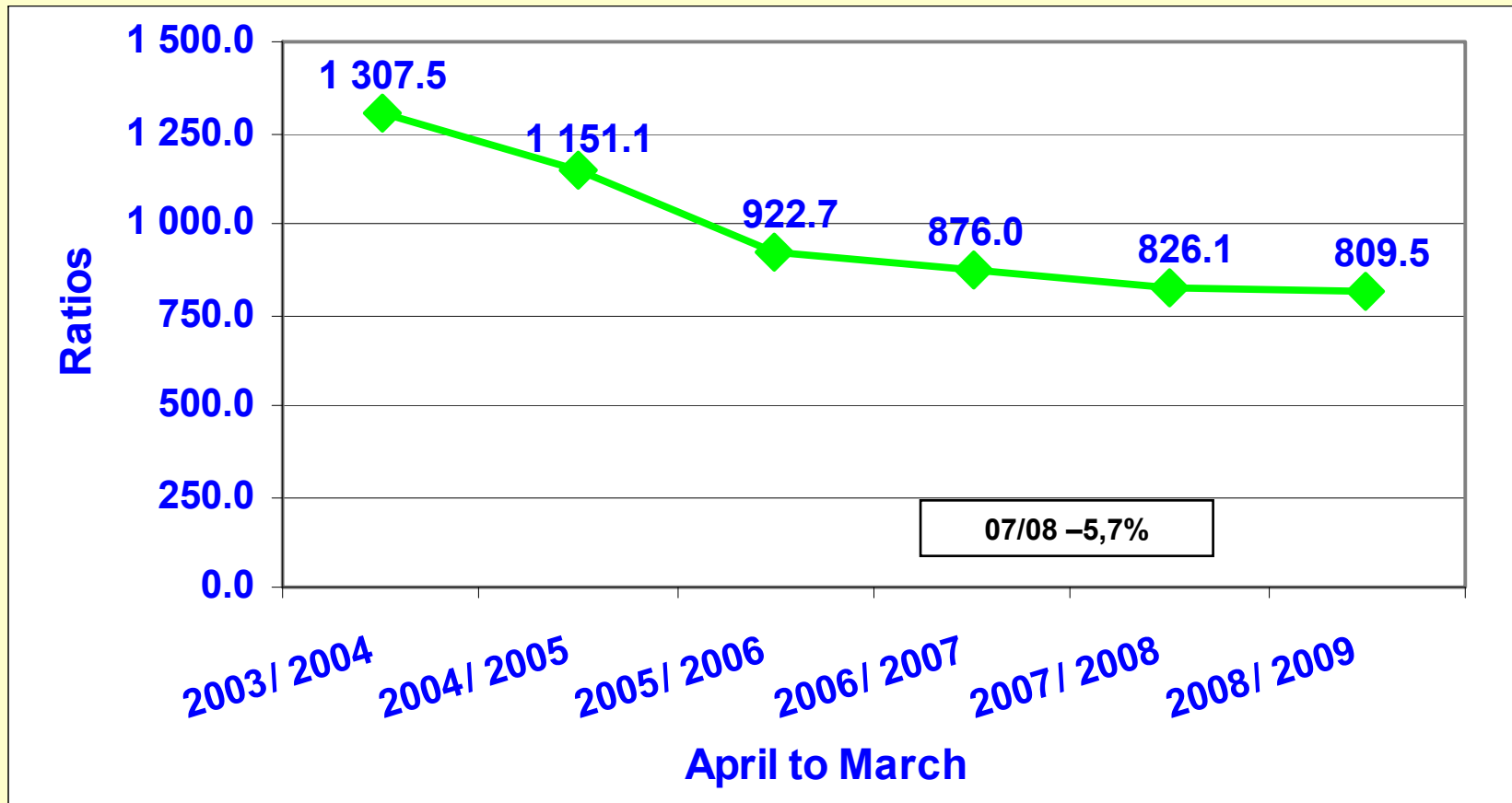
**1.5.1 All theft not mentioned elsewhere**

**1.5.2 Commercial crime**

**1.5.3 Shoplifting**



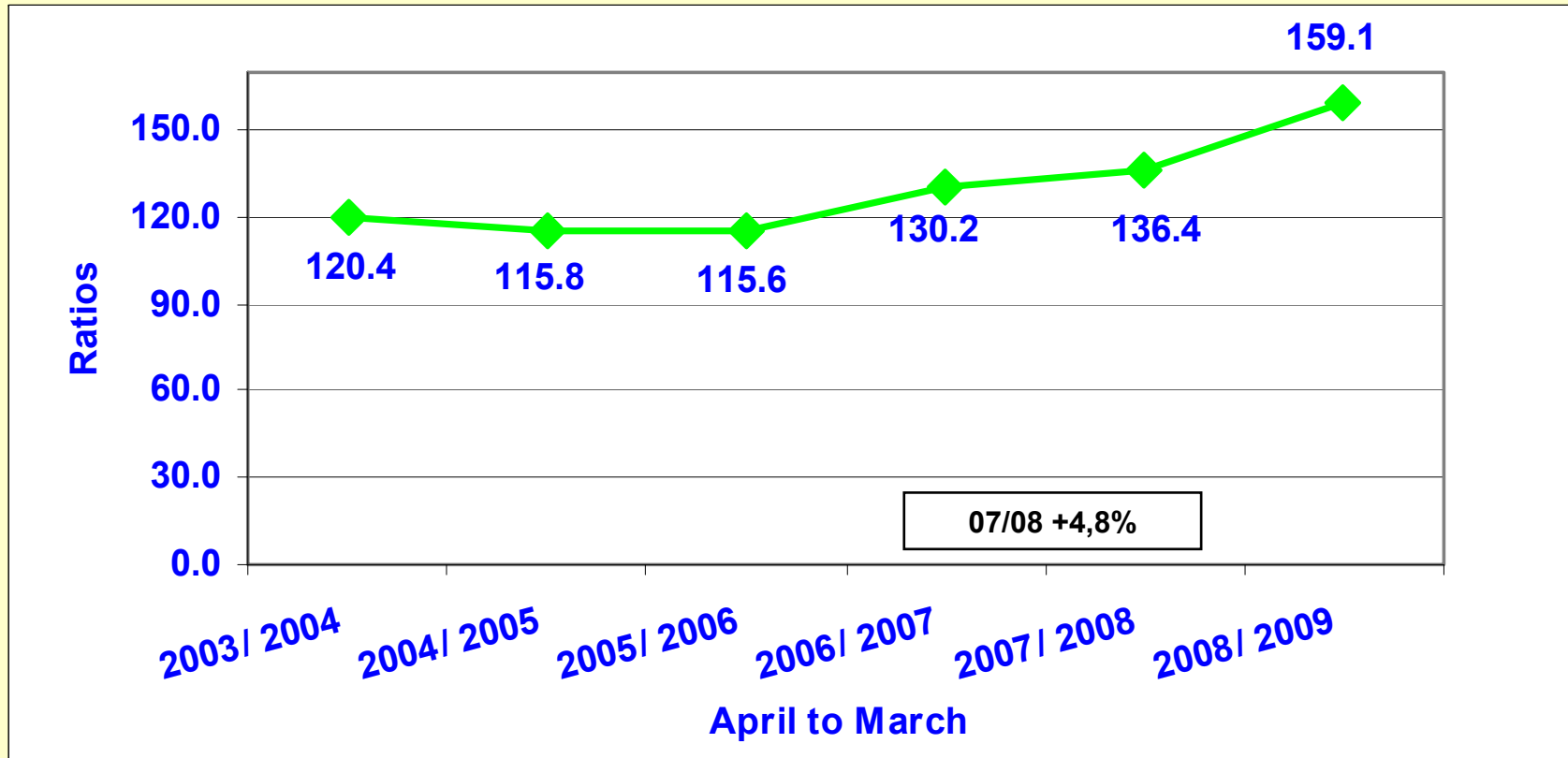
# 1.5.1 All theft not mentioned elsewhere



The other theft ratio decreased by 2,0% between 2007/2008 and 2008/2009



# 1.5.2 Commercial crime

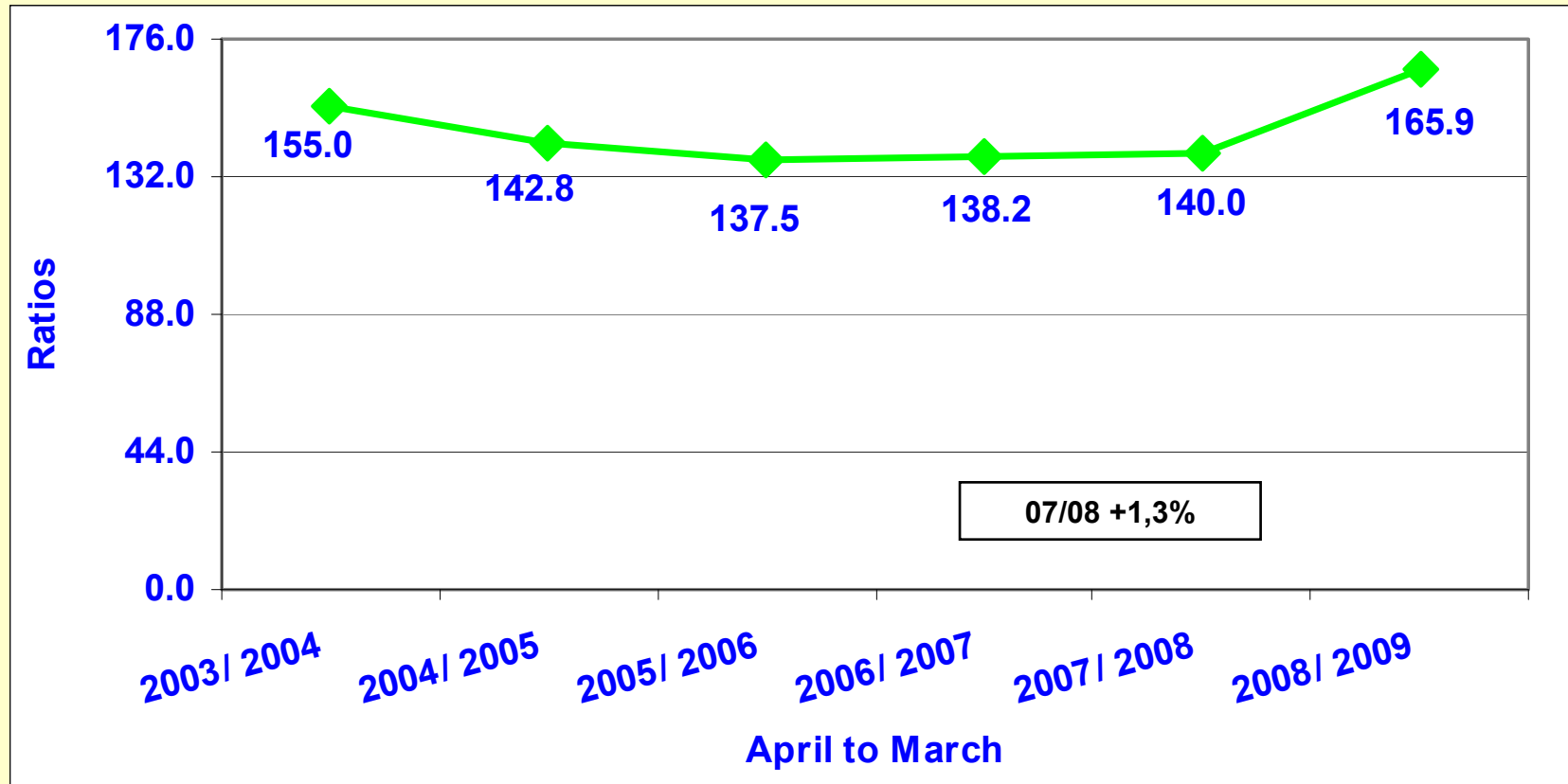


**The commercial crime ratio increased by 16,6% between 2007/2008 and 2008/2009**





# 1.5.3 Shoplifting



**The shoplifting ratio increased by 18,5% between 2007/2008 and 2008/2009**



# End of presentation

---



THANK YOU

