
GOVERNMENT NOTICES • GOEWERMENTSKENNISGEWINGS

DEPARTMENT OF TRANSPORT

NO. 7608

17 June 2026

**THE SOUTH AFRICAN NATIONAL ROADS
AGENCY SOC LIMITED**Registration No: 1998/009584/30

DECLARATION AMENDMENT OF NATIONAL ROAD R34 SECTION 7

AMENDMENT OF DECLARATION No. 4014 OF 2023.

By virtue of section 40(1)(b) of the South African National Roads Agency Limited and the National Roads Act 1998 (Act No. 7 of 1998), I hereby amend Declaration No. 4014 of 2023 by substituting a part of paragraph B of the Schedule, being the descriptive declaration of the route from its intersection with National Road N1 Section 17 at Kroonstad up to Edenville, with the accompanying sheets 1 to 9 of Plan No. P1268/25.

(National Road R34 Section 7: Kroonstad – Edenville)

MINISTER OF TRANSPORT

DEPARTEMENT VAN VERVOER

NO. 7608

17 Junie 2026

**DIE SUID-AFRIKAANSE NASIONALE
PADAGENTSKAP MSB BEPERK**

Registrasie No: 1998/009584/30

VERKLARING WYSIGING VAN NASIONALE PAD R34 SEKSIE 7

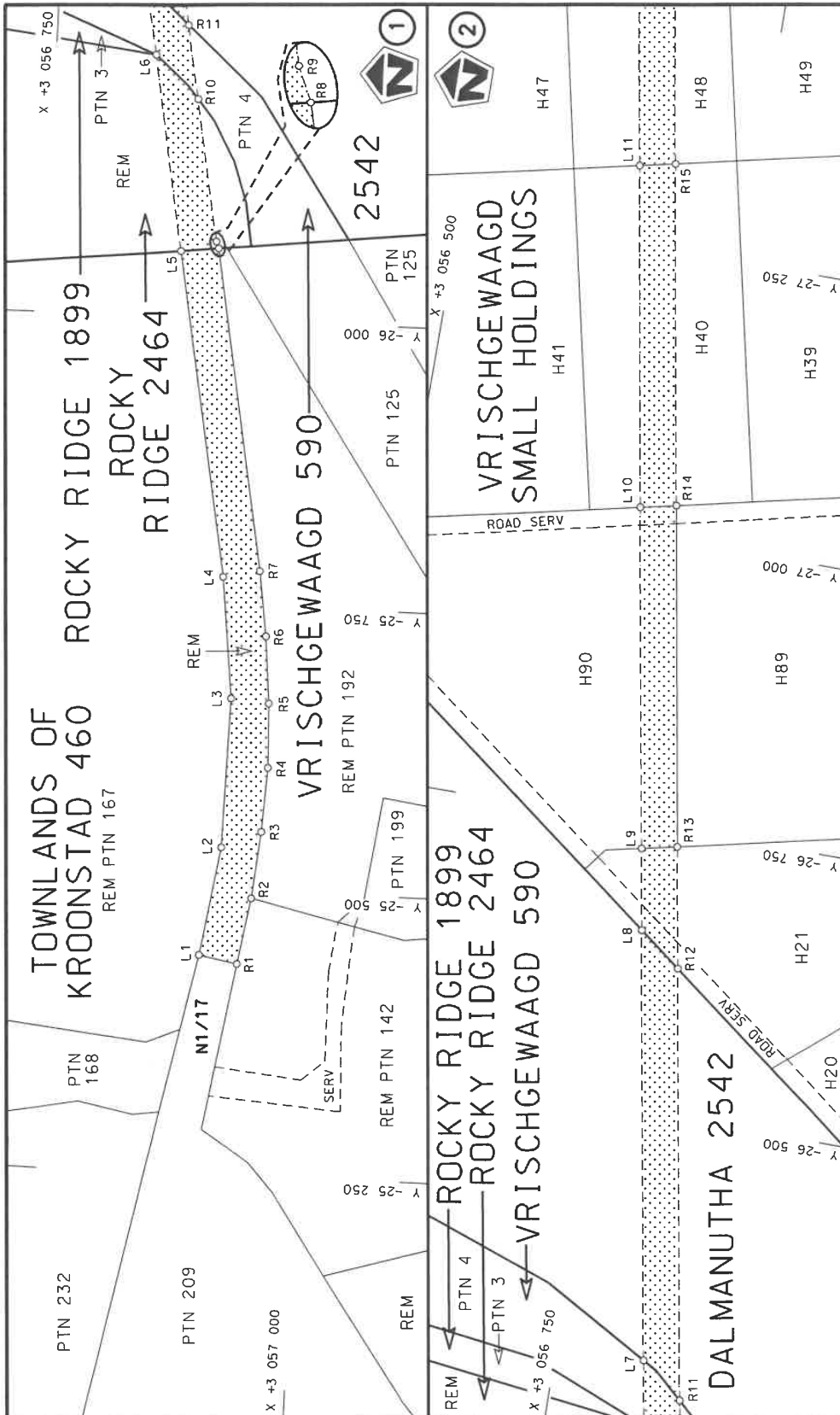
WYSIGING VAN VERKLARING No. 4014 VAN 2023.

Kragtens Artikel 40(1)(b) van die Suid-Afrikaanse Nasionale Padagentskap Beperk en Nasionale Paaie Wet 1998 (Wet No. 7 van 1998), wysig ek hiermee Verklaring No. 4014 van 2023 deur 'n gedeelte van paragraaf B van die Skedule te vervang, synde die gedeelte van die beskrywende verklaring van die pad vanaf die interseksie met Nasionale Pad N1 Seksie 17 by Kroonstad tot by Edenville, met bygaande velle 1 tot 9 van Plan No. P1268/25.

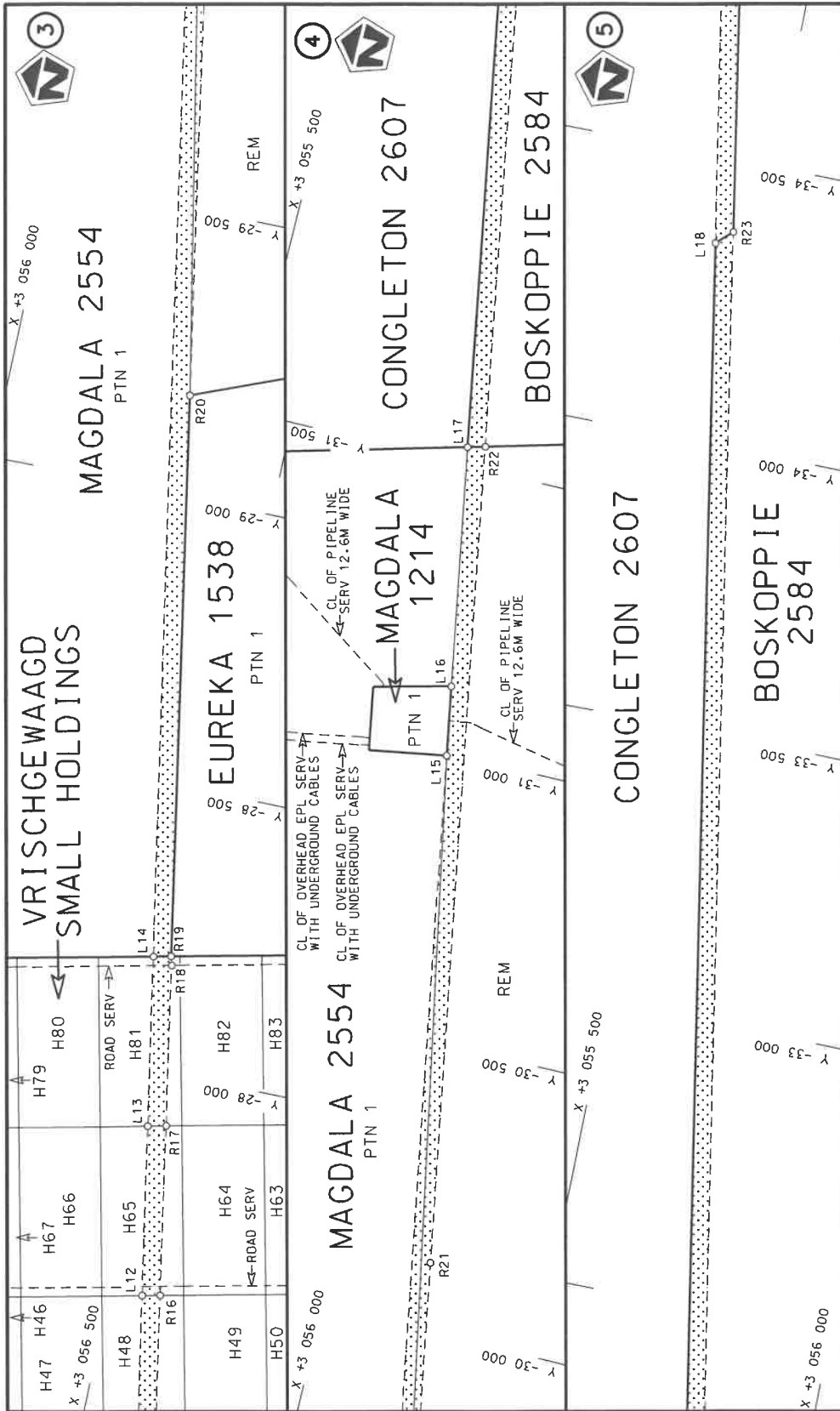
(Nasionale Pad R34 Seksie 7: Kroonstad – Edenville)

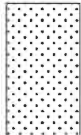


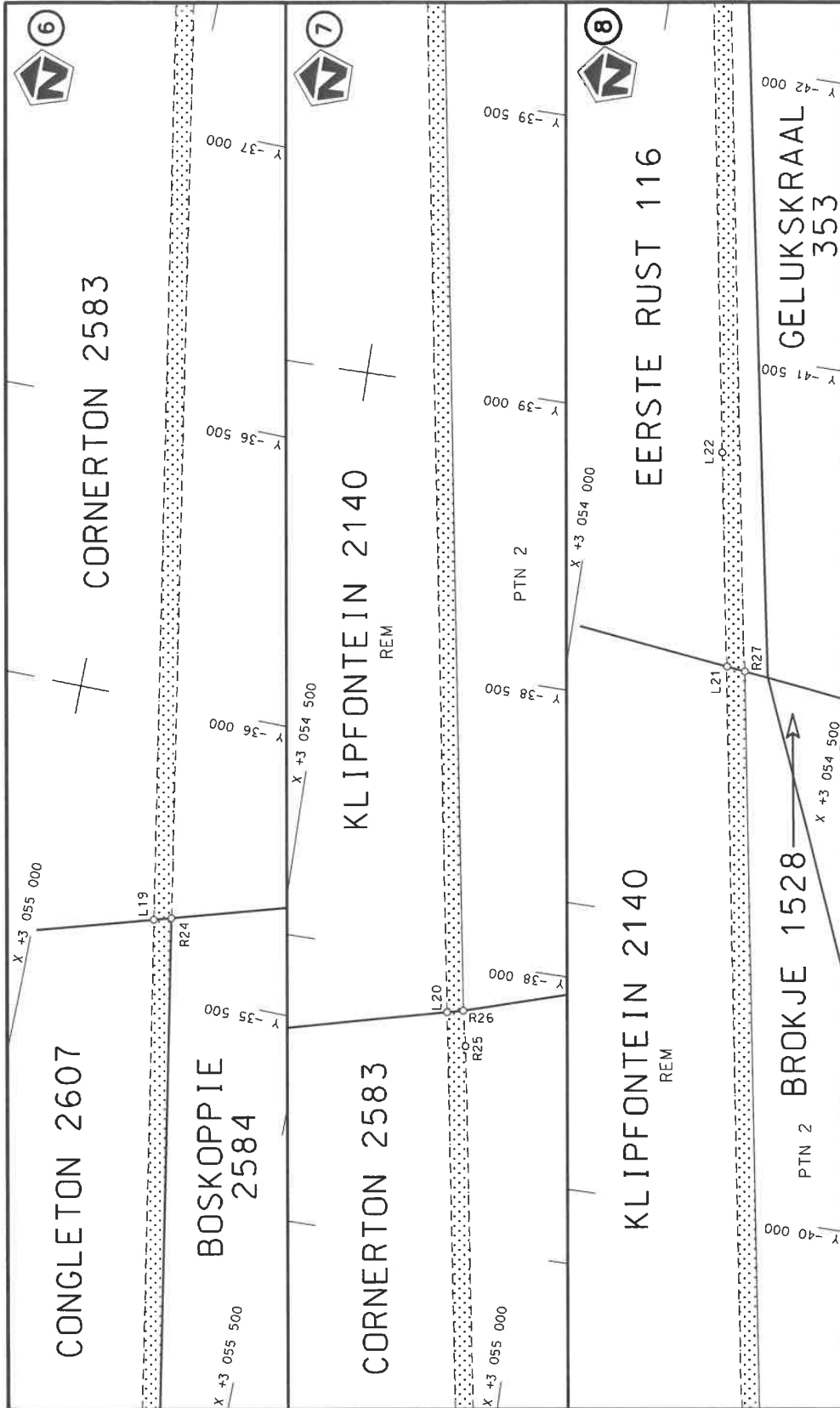
MINISTER VAN VERVOER



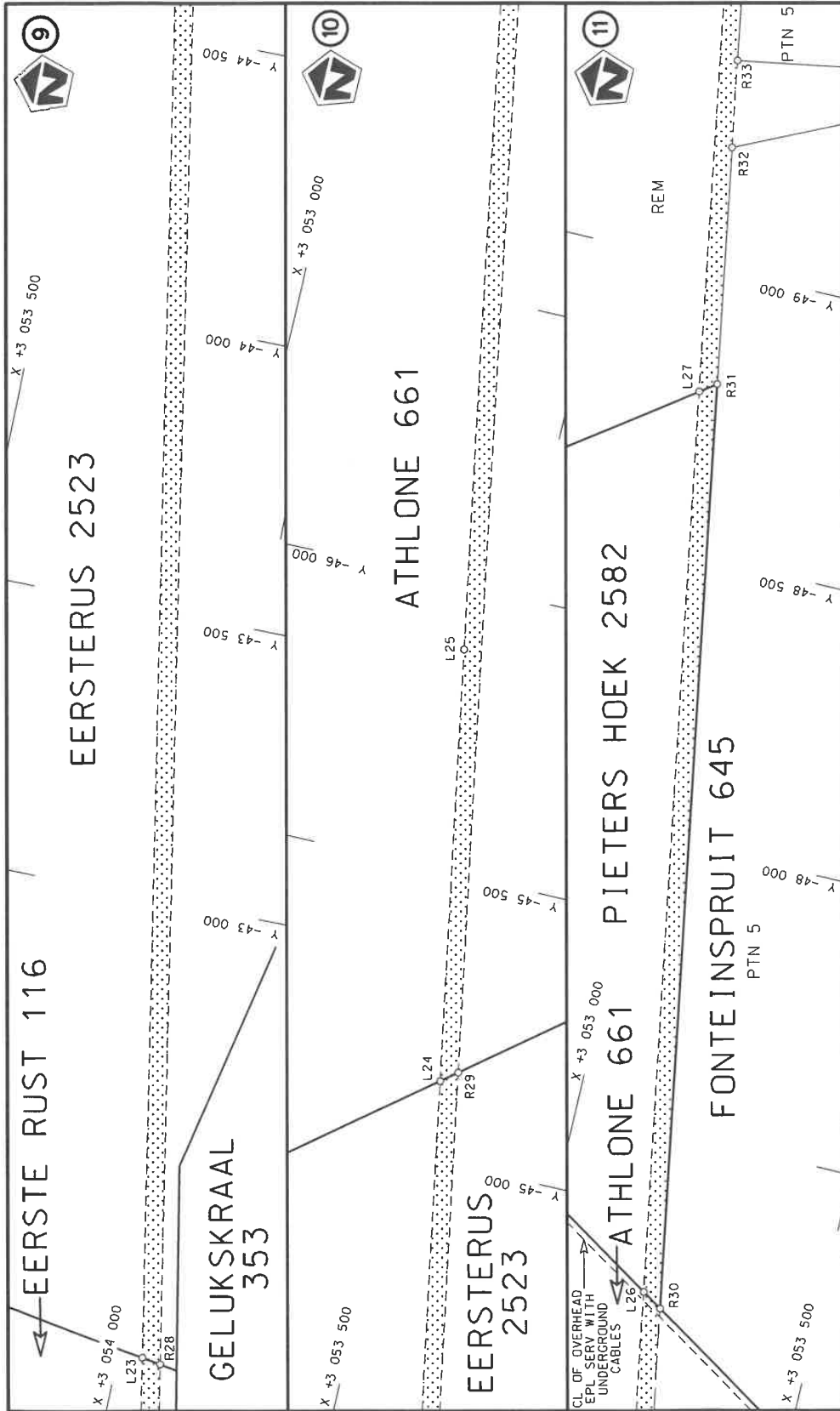
| | | | |
|---|---|---|---|
| <p>Die Suid Afrikaanse Nasionale Padagentskap MSB Bpk The South African National Roads Agency SOC Ltd</p> | <p>Die figuur getoon The figure shown</p> | <p>ste die padreserwe voor van 'n gedeelte represents the road reserve of a portion van Nasionale Roete R34 of National Route</p> | <p>Vel Sheet 1 of 9 Plan P1268/25</p> |
|---|---|---|---|

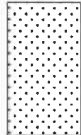


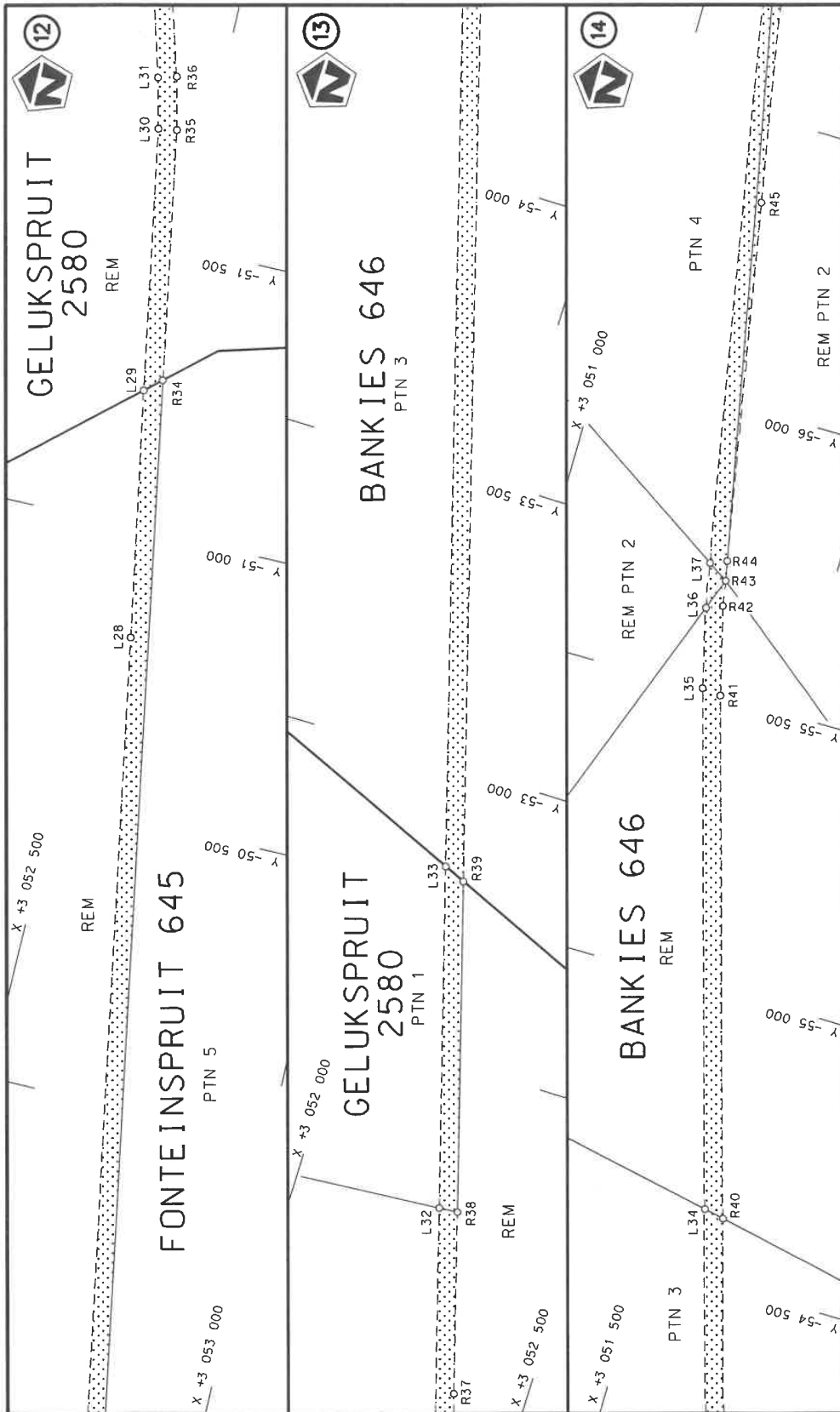
| | | | | |
|---|---------------------------------------|---|---|-----------------------------------|
| Die Suid Afrikaanse Nasionale Padagentskap MSB Bpk The South African National Roads Agency SOC Ltd | Die figuur getoon The figure shown |  | steldie padreserwe voor van 'n gedeelte represents the road reserve of a portion van Nasionale Roete R34 of National Route Section | Vel Sheet 2 of 9 Plan P1268/25 |
|---|---------------------------------------|---|---|-----------------------------------|



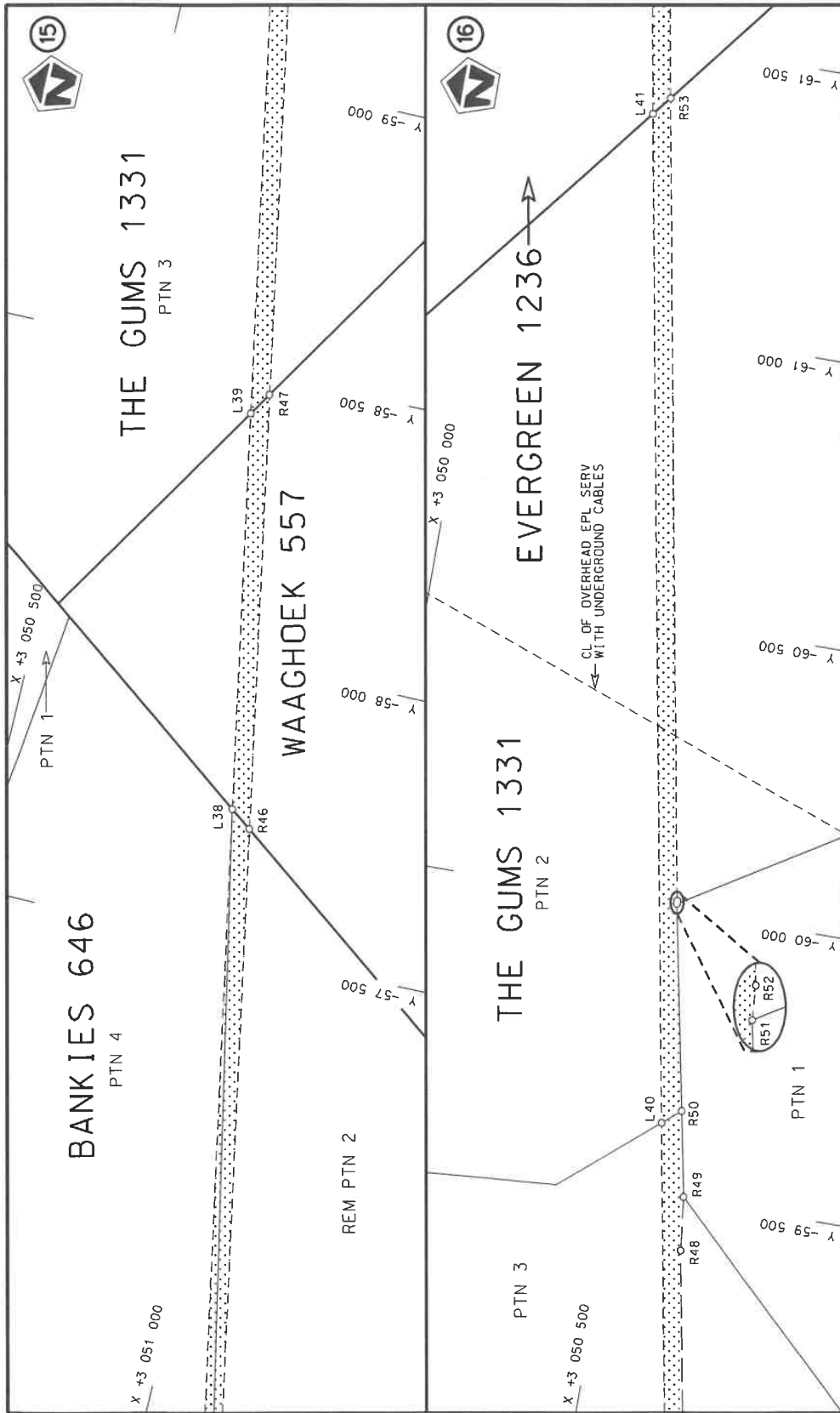
| | | | |
|---|---|--|---|
| <p>Die Suid Afrikaanse Nasionale Padagentskap MSB Bpk The South African National Roads Agency SOC Ltd</p> | <p>Die figuur getoon The figure shown</p> | <p>stel die padreserwe voor van 'n gedeelte represents the road reserve of a portion van Nasionale Roete R34 of National Route</p> | <p>Vel Sheet 3 of 9 Plan P1268/25</p> |
|---|---|--|---|



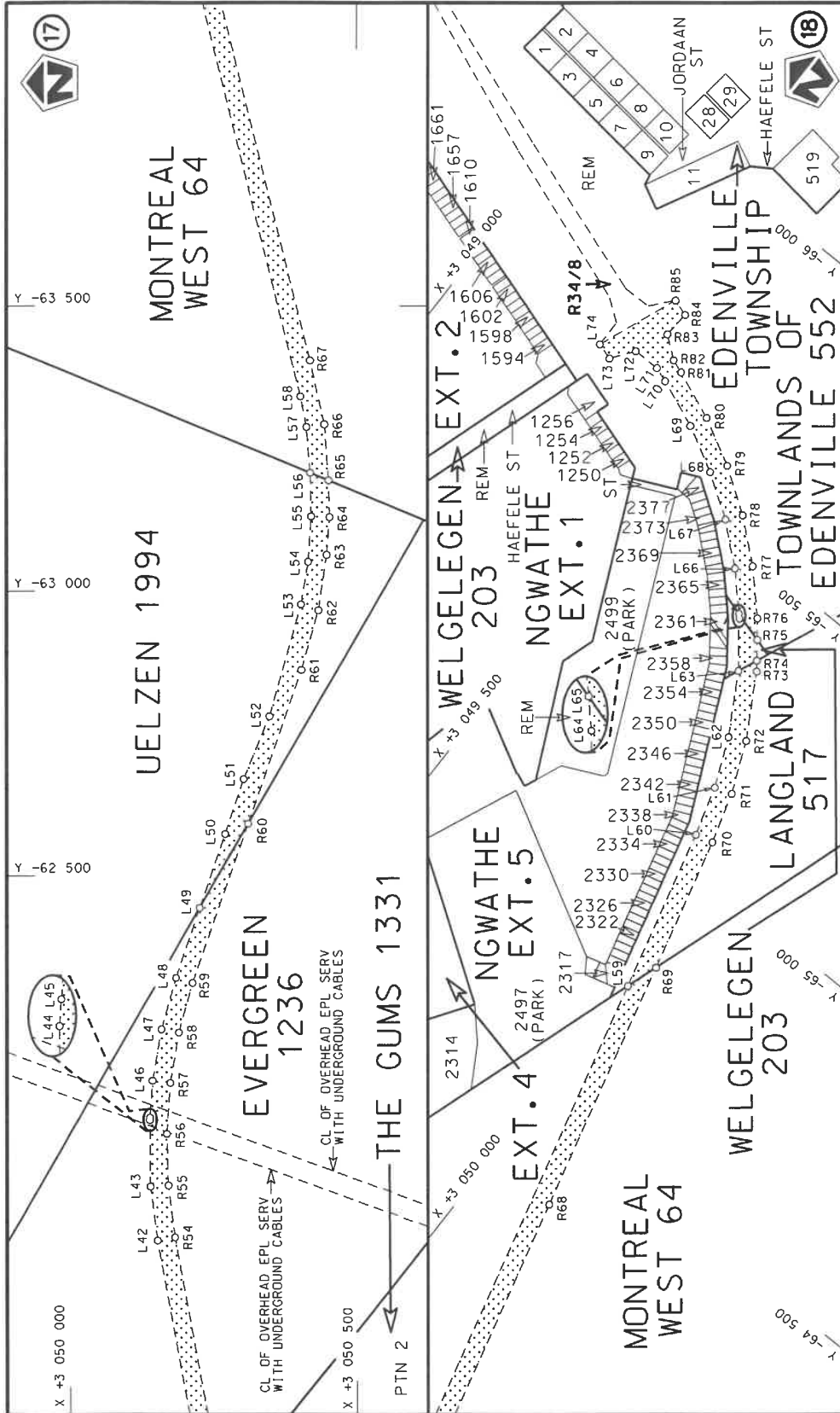
| | | | | |
|---|---|---|---|---|
| <p>Die Suid Afrikaanse Nasionale Padagentskap MSB Bpk The South African National Roads Agency SOC Ltd</p> | <p>Die figuur getoon The figure shown</p> |  | <p>steidie padreserwe voor van 'n gedeelte represents the road reserve of a portion van Nasionale Roete R34 of National Route Section</p> | <p>Vel Sheet 4 of 9 Plan P1268/25</p> |
|---|---|---|---|---|

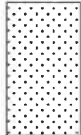


| | | | |
|---|---|---|---|
| <p>Die Suid Afrikaanse Nasionale Padagentskap MSB Bpk The South African National Roads Agency SOC Ltd</p> | <p>Die figuur getoon The figure shown</p> | <p>steldie padreserwe voor van 'n gedeelte represents the road reserve of a portion van Nasionale Roete R34 of National Route</p> | <p>Vel Sheet 5 of 9 Plan P1268/25</p> |
| | | <p>R34 Seksie Section</p> | <p>7</p> |



| | | | |
|---|---|--|---|
| <p>Die Suid Afrikaanse Nasionale Padagentskap MSB Bpk The South African National Roads Agency SOC Ltd</p> | <p>Die figuur getoon The figure shown</p> | <p>stel die padreserwe voor van 'n gedeelte represents the road reserve of a portion van Nasionale Roete R34 of National Route Section</p> | <p>Vel Sheet 6 of 9 Plan P1268/25</p> |
|---|---|--|---|



| | | | |
|---|---------------------------------------|---|---|
| Die Suid Afrikaanse Nasionale Padagentskap MSB Bpk The South African National Roads Agency SOC Ltd | Die figuur getoon The figure shown |  | steiëde padreserwe voor 'n gedeelte represents the road reserve of a portion van Nasionale Roete R34 of National Route |
| | | | Vel Sheet 7 of 9 |
| | | | Plan P1268/25 |

| PADRESERWE KOÖRDINATE / ROAD RESERVE CO-ORDINATES | | | | | | |
|---|------------|-------|--------|----------------------------|------------|--------------|
| LINKERKANT/LEFT HAND SIDE | | | | REGTERKANT/RIGHT HAND SIDE | | |
| | Y | X | WG 27° | | Y | X |
| L1 | -25 442.18 | 3 056 | 908.76 | R1 | -25 435.55 | 3 056 942.24 |
| L2 | -25 537.31 | 3 056 | 924.18 | R2 | -25 493.68 | 3 056 952.43 |
| L3 | -25 668.30 | 3 056 | 927.27 | R3 | -25 552.33 | 3 056 958.73 |
| L4 | -25 774.47 | 3 056 | 915.68 | R4 | -25 608.73 | 3 056 962.06 |
| L5 | -26 058.30 | 3 056 | 866.18 | R5 | -25 665.18 | 3 056 960.43 |
| L6 | -26 228.81 | 3 056 | 836.91 | R6 | -25 723.96 | 3 056 955.35 |
| L7 | -26 285.51 | 3 056 | 827.06 | R7 | -25 780.87 | 3 056 947.62 |
| L8 | -26 658.04 | 3 056 | 762.35 | R8 | -26 061.87 | 3 056 899.15 |
| L9 | -26 728.75 | 3 056 | 750.06 | R9 | -26 067.88 | 3 056 896.90 |
| L10 | -27 023.67 | 3 056 | 698.83 | R10 | -26 191.86 | 3 056 875.32 |
| L11 | -27 318.60 | 3 056 | 647.60 | R11 | -26 256.18 | 3 056 864.12 |
| L12 | -27 613.52 | 3 056 | 596.37 | R12 | -26 630.13 | 3 056 799.04 |
| L13 | -27 908.44 | 3 056 | 545.13 | R13 | -26 735.46 | 3 056 780.70 |
| L14 | -28 203.38 | 3 056 | 493.90 | R14 | -27 030.41 | 3 056 729.58 |
| L15 | -31 001.10 | 3 056 | 007.90 | R15 | -27 325.33 | 3 056 678.32 |
| L16 | -31 121.59 | 3 055 | 986.94 | R16 | -27 620.25 | 3 056 627.07 |
| L17 | -31 537.82 | 3 055 | 914.59 | R17 | -27 915.35 | 3 056 576.65 |
| L18 | -34 348.87 | 3 055 | 425.81 | R18 | -28 194.48 | 3 056 528.96 |
| L19 | -35 619.80 | 3 055 | 205.07 | R19 | -28 210.14 | 3 056 524.75 |
| L20 | -37 906.67 | 3 054 | 808.30 | R20 | -29 184.45 | 3 056 355.38 |
| L21 | -40 954.02 | 3 054 | 279.59 | R21 | -30 125.74 | 3 056 192.86 |
| L22 | -41 326.84 | 3 054 | 214.91 | R22 | -31 546.04 | 3 055 944.99 |
| L23 | -42 205.32 | 3 054 | 062.15 | R23 | -34 374.07 | 3 055 453.12 |
| L24 | -45 138.38 | 3 053 | 552.13 | R24 | -35 628.69 | 3 055 235.17 |
| L25 | -45 889.75 | 3 053 | 421.48 | R25 | -37 853.15 | 3 054 848.88 |
| L26 | -47 214.66 | 3 053 | 190.90 | R26 | -37 913.69 | 3 054 835.69 |
| L27 | -48 780.93 | 3 052 | 918.32 | R27 | -40 950.20 | 3 054 312.20 |
| L28 | -50 811.58 | 3 052 | 564.92 | R28 | -42 199.81 | 3 054 094.74 |
| L29 | -51 239.27 | 3 052 | 489.77 | R29 | -45 160.11 | 3 053 579.59 |
| L30 | -51 693.96 | 3 052 | 409.88 | R30 | -47 192.62 | 3 053 225.90 |
| L31 | -51 781.23 | 3 052 | 388.65 | R31 | -48 801.02 | 3 052 946.10 |
| L32 | -52 228.54 | 3 052 | 261.49 | R32 | -49 211.83 | 3 052 874.77 |
| L33 | -52 807.64 | 3 052 | 096.40 | R33 | -49 362.75 | 3 052 848.50 |
| L34 | -54 621.37 | 3 051 | 579.32 | R34 | -51 264.08 | 3 052 518.18 |
| L35 | -55 505.05 | 3 051 | 327.39 | R35 | -51 699.18 | 3 052 441.83 |
| L36 | -55 641.28 | 3 051 | 293.49 | R36 | -51 790.26 | 3 052 420.23 |
| L37 | -55 719.38 | 3 051 | 279.14 | R37 | -51 924.03 | 3 052 381.16 |
| L38 | -57 738.68 | 3 050 | 908.34 | R38 | -52 230.89 | 3 052 294.31 |
| L39 | -58 424.60 | 3 050 | 782.56 | R39 | -52 791.24 | 3 052 134.03 |
| L40 | -59 625.12 | 3 050 | 562.42 | R40 | -54 614.03 | 3 051 614.26 |
| L41 | -61 372.51 | 3 050 | 241.99 | R41 | -55 501.23 | 3 051 360.75 |
| L42 | -61 858.86 | 3 050 | 152.80 | R42 | -55 654.17 | 3 051 322.16 |
| L43 | -61 953.74 | 3 050 | 140.26 | R43 | -55 696.53 | 3 051 314.02 |
| L44 | -62 070.67 | 3 050 | 139.29 | R44 | -55 730.68 | 3 051 307.23 |
| L45 | -62 075.10 | 3 050 | 139.60 | R45 | -56 355.01 | 3 051 194.16 |
| L46 | -62 139.93 | 3 050 | 144.00 | R46 | -57 711.05 | 3 050 945.37 |
| L47 | -62 230.47 | 3 050 | 159.85 | R47 | -58 463.85 | 3 050 807.25 |
| L48 | -62 320.86 | 3 050 | 185.81 | R48 | -59 409.18 | 3 050 633.81 |
| L49 | -62 443.21 | 3 050 | 227.61 | R49 | -59 502.91 | 3 050 622.97 |
| L50 | -62 573.61 | 3 050 | 272.15 | R50 | -59 651.57 | 3 050 593.61 |
| L51 | -62 669.89 | 3 050 | 304.52 | R51 | -60 010.33 | 3 050 522.75 |

| | | | | |
|-----------|---|--------|---|----------|
| Vel Sheet | 8 | Van of | 9 | P1268/25 |
|-----------|---|--------|---|----------|

| PADRESERWE KOÖRDINATE / ROAD RESERVE CO-ORDINATES | | | | | | |
|---|------------|-------|--------|----------------------------|------------|--------------|
| LINKERKANT/LEFT HAND SIDE | | | | REGTERKANT/RIGHT HAND SIDE | | |
| | Y | X | WG 27° | | Y | X |
| L52 | -62 780.40 | 3 050 | 349.17 | R52 | -60 015.73 | 3 050 522.36 |
| L53 | -62 976.90 | 3 050 | 404.28 | R53 | -61 405.00 | 3 050 267.75 |
| L54 | -63 051.55 | 3 050 | 416.56 | R54 | -61 864.67 | 3 050 183.51 |
| L55 | -63 131.24 | 3 050 | 422.11 | R55 | -61 955.95 | 3 050 171.70 |
| L56 | -63 207.25 | 3 050 | 420.30 | R56 | -62 046.47 | 3 050 169.11 |
| L57 | -63 288.22 | 3 050 | 413.78 | R57 | -62 136.06 | 3 050 175.29 |
| L58 | -63 341.87 | 3 050 | 403.19 | R58 | -62 224.76 | 3 050 190.71 |
| L59 | -64 802.14 | 3 050 | 042.41 | R59 | -62 311.88 | 3 050 215.02 |
| L60 | -65 084.84 | 3 049 | 971.76 | R60 | -62 590.90 | 3 050 312.21 |
| L61 | -65 170.57 | 3 049 | 946.76 | R61 | -62 861.69 | 3 050 404.84 |
| L62 | -65 256.02 | 3 049 | 911.17 | R62 | -62 966.56 | 3 050 434.54 |
| L63 | -65 357.76 | 3 049 | 853.22 | R63 | -63 063.72 | 3 050 448.71 |
| L64 | -65 431.03 | 3 049 | 798.10 | R64 | -63 130.24 | 3 050 453.67 |
| L65 | -65 437.27 | 3 049 | 792.23 | R65 | -63 194.01 | 3 050 452.13 |
| L66 | -65 495.46 | 3 049 | 737.51 | R66 | -63 292.95 | 3 050 444.88 |
| L67 | -65 552.97 | 3 049 | 671.41 | R67 | -63 404.99 | 3 050 420.01 |
| L68 | -65 602.64 | 3 049 | 598.90 | R68 | -64 415.78 | 3 050 169.94 |
| L69 | -65 644.90 | 3 049 | 521.51 | R69 | -64 857.86 | 3 050 061.08 |
| L70 | -65 679.28 | 3 049 | 438.57 | R70 | -65 093.18 | 3 050 002.66 |
| L71 | -65 688.62 | 3 049 | 413.03 | R71 | -65 181.23 | 3 049 976.98 |
| L72 | -65 689.36 | 3 049 | 365.94 | R72 | -65 270.16 | 3 049 939.94 |
| L73 | -65 651.20 | 3 049 | 337.71 | R73 | -65 376.50 | 3 049 879.16 |
| L74 | -65 660.44 | 3 049 | 309.17 | R74 | -65 391.82 | 3 049 867.64 |
| | | | | R75 | -65 420.85 | 3 049 845.80 |
| | | | | R76 | -65 451.67 | 3 049 822.62 |
| | | | | R77 | -65 518.55 | 3 049 759.72 |
| | | | | R78 | -65 578.33 | 3 049 691.02 |
| | | | | R79 | -65 629.95 | 3 049 615.65 |
| | | | | R80 | -65 673.81 | 3 049 535.35 |
| | | | | R81 | -65 708.84 | 3 049 450.82 |
| | | | | R82 | -65 717.34 | 3 049 427.61 |
| | | | | R83 | -65 746.41 | 3 049 391.02 |
| | | | | R84 | -65 792.68 | 3 049 394.18 |
| | | | | R85 | -65 801.95 | 3 049 365.54 |

| | | | | |
|--------------|---|-----------|---|----------|
| Vel Sheet | 9 | Van of | 9 | P1268/25 |
|--------------|---|-----------|---|----------|