

---

**GOVERNMENT NOTICES • GOEWERMENTSKENNISGEWINGS**

---

**DEPARTMENT OF TRANSPORT**

NO. 7573

8 June 2026

**THE SOUTH AFRICAN NATIONAL ROADS  
AGENCY SOC LIMITED**Registration No: 1998/009584/30

---

**DECLARATION AMENDMENT OF NATIONAL ROAD R26 SECTION 11**

AMENDMENT OF DECLARATION No. 5578 OF 2024.

By virtue of section 40(1)(b) of the South African National Roads Agency Limited and the National Roads Act 1998 (Act No. 7 of 1998), I hereby amend Declaration No. 5578 of 2024 by substituting paragraph C of the Schedule, with the accompanying sheets 1 to 8 of Plan No. P1265/25.

**(National Road R26 Section 11: Reitz – Tweeling)**  

---

**MINISTER OF TRANSPORT**

**DEPARTEMENT VAN VERVOER**

**NO. 7573**

**8 Junie 2026**

**DIE SUID-AFRIKAANSE NASIONALE  
PADAGENTSKAP MSB BEPERK**

**Registrasie No: 1998/009584/30**

---

**VERKLARING WYSIGING VAN NASIONALE PAD R26 SEKSIE 11**

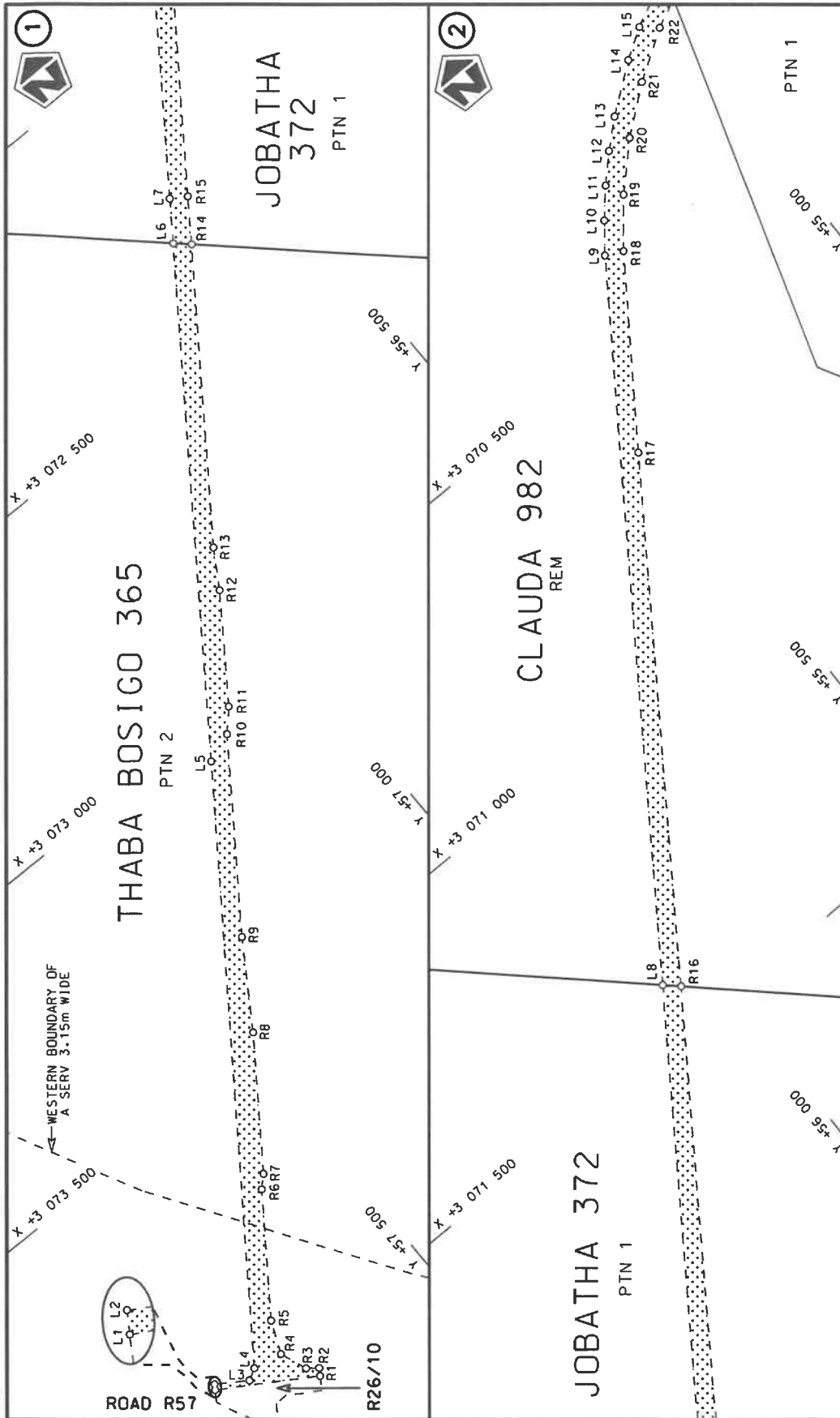
WYSIGING VAN VERKLARING No. 5578 VAN 2024.


Kragtens Artikel 40(1)(b) van die Suid-Afrikaanse Nasionale Padagentskap Beperk en Nasionale Paaie Wet 1998 (Wet No. 7 van 1998), wysig ek hiermee Verklaring No. 5578 van 2024 deur paragraaf C van die Skedule te vervang, met bygaande velle 1 tot 8 van Plan No. P1265/25.

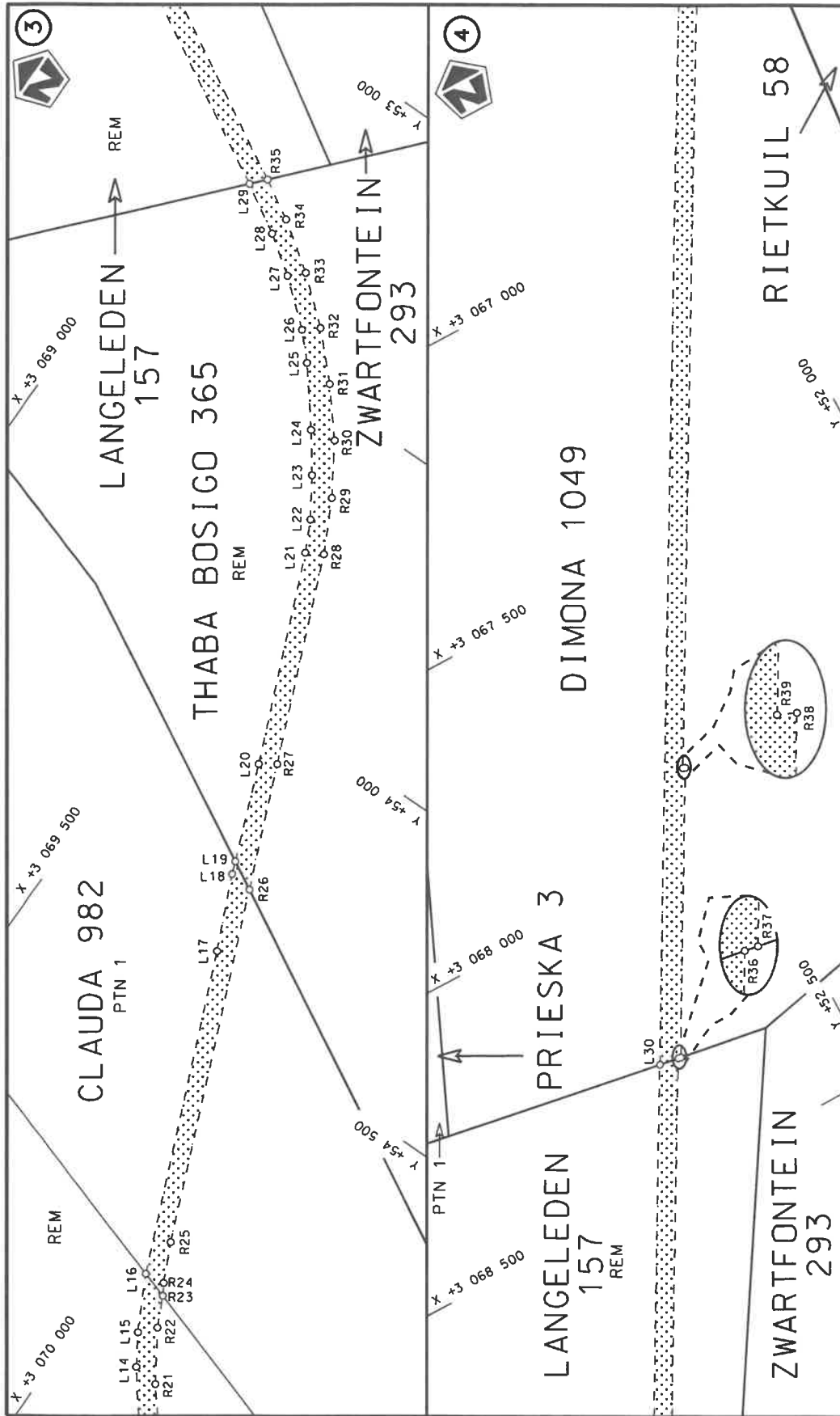
**(Nasionale Pad R26 Seksie 11: Reitz – Tweeling)**



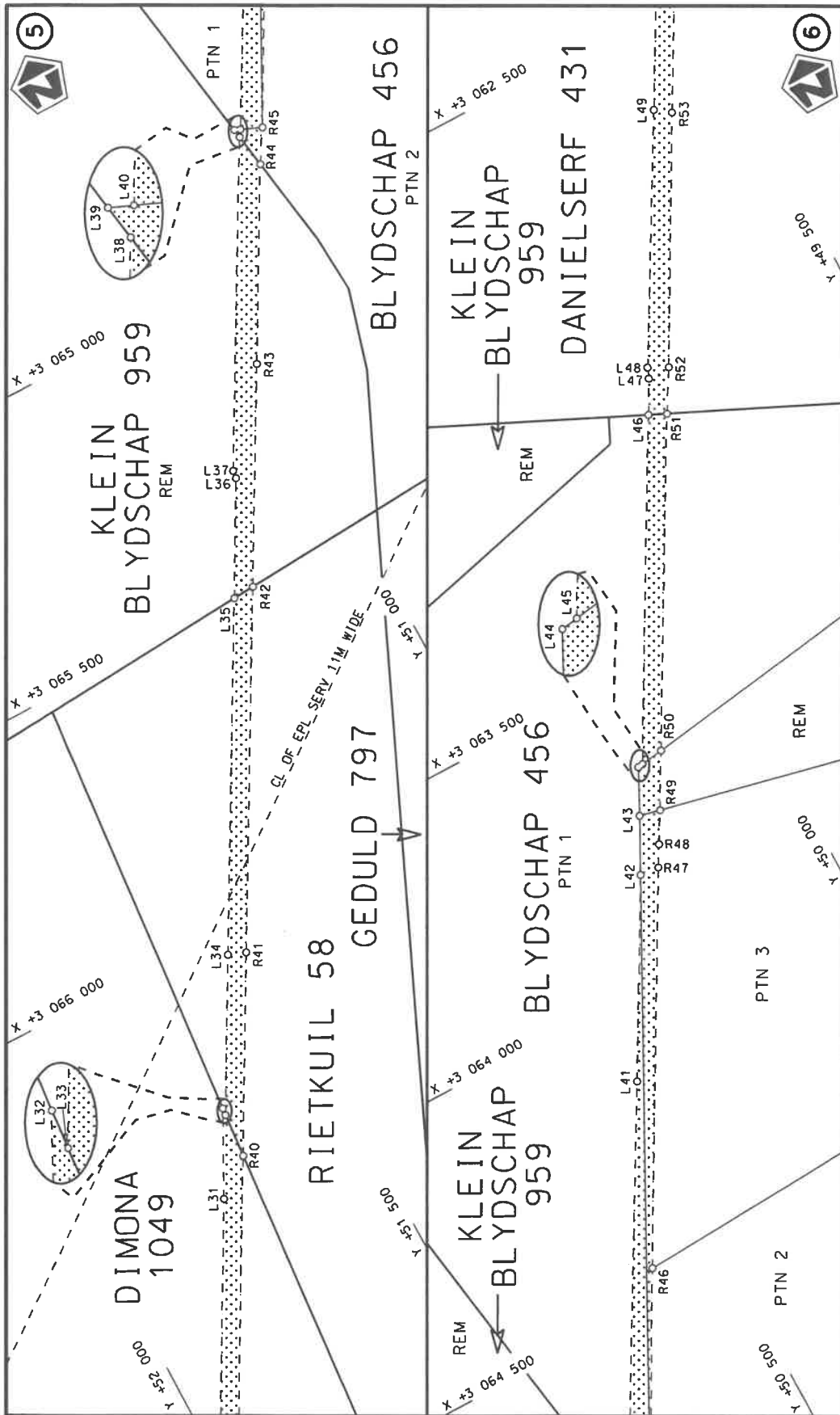
**MINISTER VAN VERVOER**



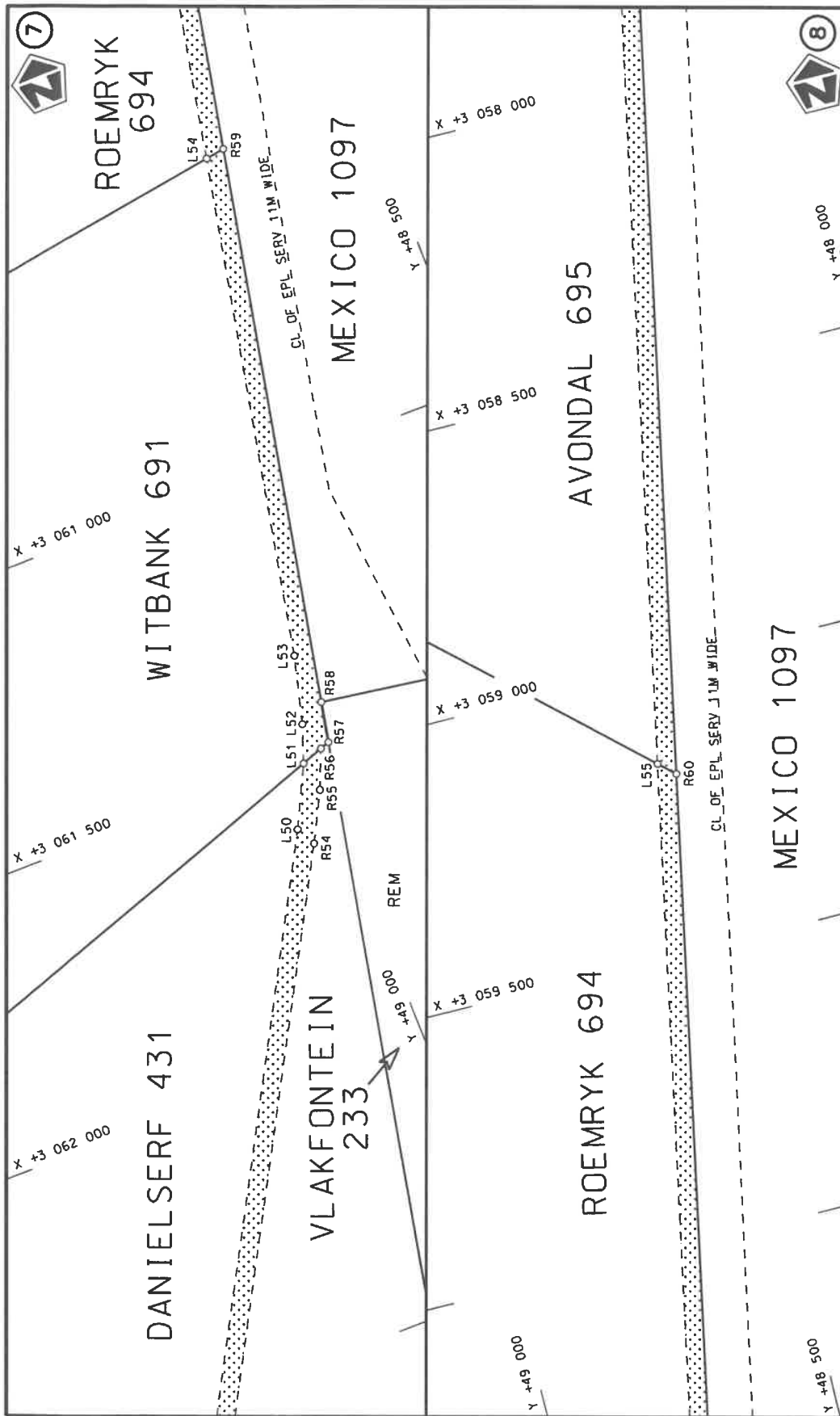
<p>Die Suid Afrikaanse Nasionale Padagentskap MSB Bpk The South African National Roads Agency SOC Ltd</p>	<p>Die figuur getoon The figure shown</p>	<p>stel die padreserwe voor van 'n gedeelte represents the road reserve of a portion van Nasionale Roete R26 of National Route</p>	<p>Vel Sheet 1 van 8 of</p>
		<p>R26 Seksie Section</p>	<p>11</p>
<p>P1265/25</p>		<p>Plan</p>	



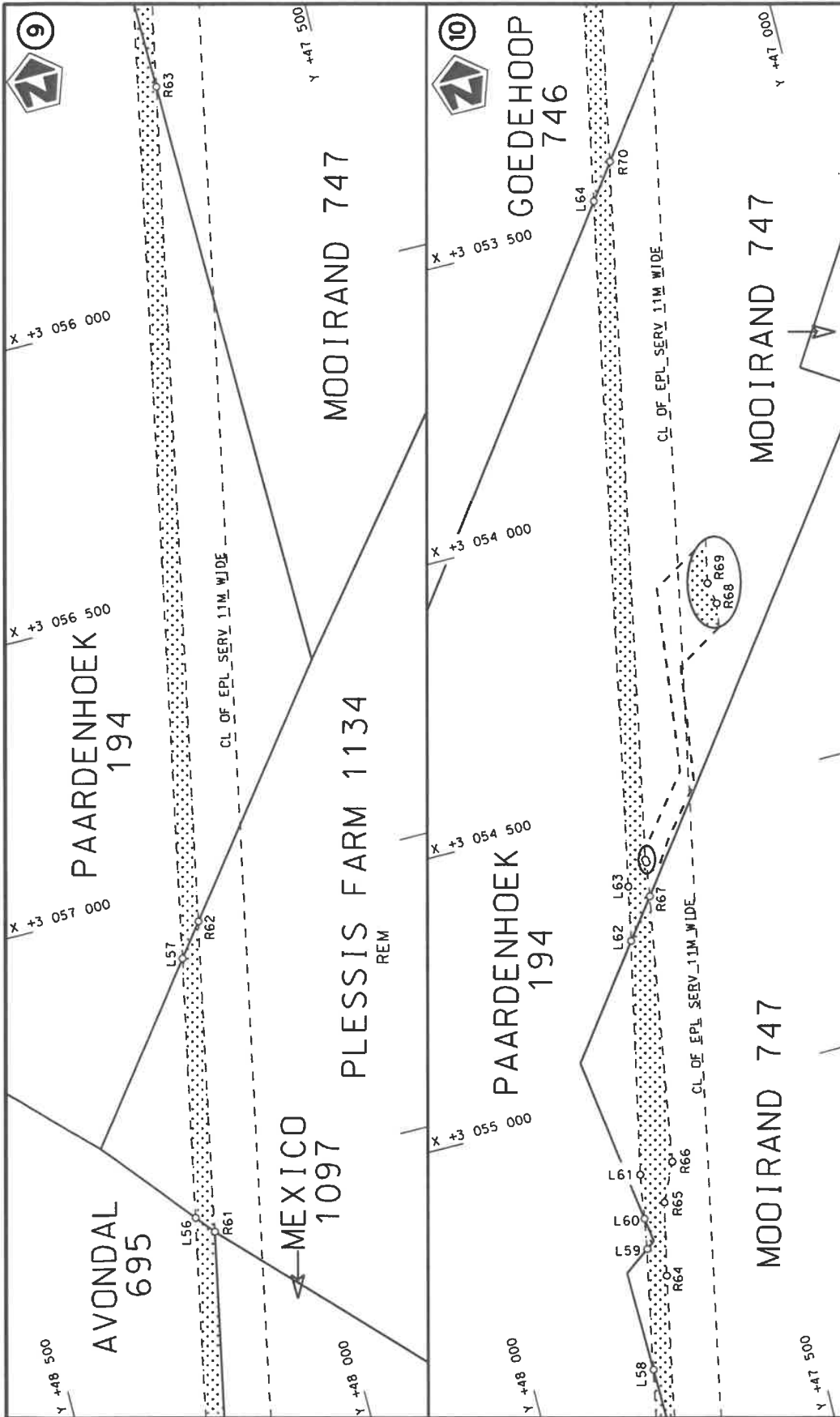
Die Suid Afrikaanse Nasionale Padagentskop MSB Bpk The South African National Roads Agency SOC Ltd	Die figuur getoon The figure shown	steldie padreserwe voor van 'n gedeelte represents the road reserve of a portion van Nasionale Roete R26 of National Route Sektie Section	Vel Sheet 2 of 8 Plan P1265/25
---	---------------------------------------	--	--------------------------------------

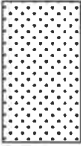


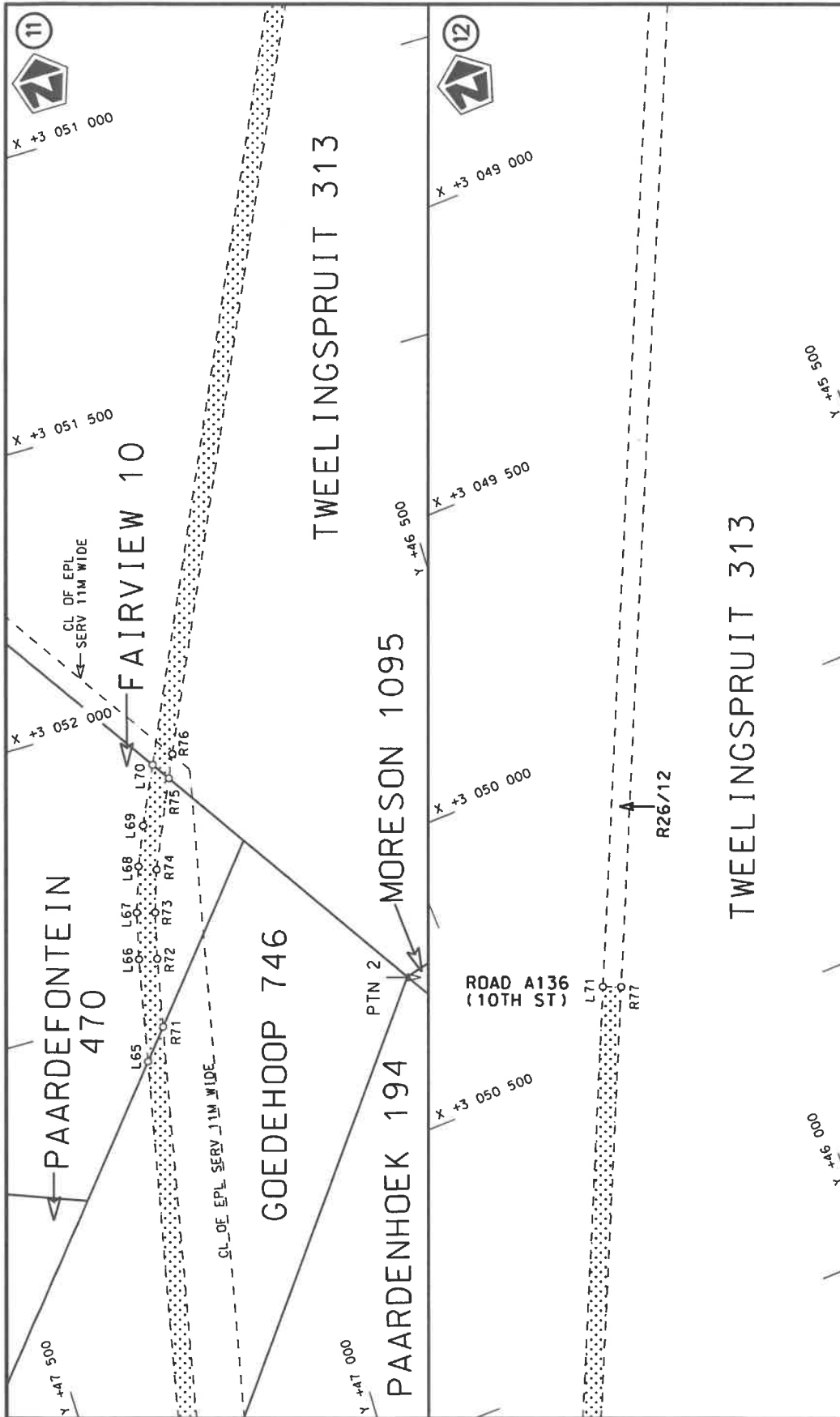
Die Suid Afrikaanse Nasionale Padagentskap MSB Bpk The South African National Roads Agency SOC Ltd	Die figuur getoon The figure shown	steldie padreserwe voor van 'n gedeelte represents the road reserve of a portion van Nasionale Roete R26 of National Route R26	Vel Sheet 3 van of 8 Plan P1265/25
---	---------------------------------------	---	---------------------------------------



Die Suid Afrikaanse Nasionale Padagentskap MSB Bpk The South African National Roads Agency SOC Ltd	Die figuur getoon The figure shown	steldie padreserwe voor van 'n gedeelte represents the road reserve of a portion van Nasionale Roete R26 of National Route of National Route	Vel Sheet 4 van of 8 Plan P1265/25
---	---------------------------------------	--	---



Die Suid Afrikaanse Nasionale Padagentskap MSB Bpk The South African National Roads Agency SOC Ltd	Die figuur getoon The figure shown		stel die padreserwe voor van 'n gedeelte represents the road reserve of a portion van Nasionale Roete R26 of National Route Section	
			11	Vel Sheet 5 of 8 Plan P1265/25



Die Suid Afrikaanse Nasionale Padagentskap MSB Bpk The South African National Roads Agency SOC Ltd	Die figuur getoon The figure shown	steldie padreserwe voor van 'n gedeelte represents the road reserve of a portion van Nasionale Roete R26 of National Route Seksie Section	Vel Sheet 6 of 8 Plan P1265/25
---	---------------------------------------	--	---

PADRESERWE KOÖRDINATE / ROAD RESERVE CO-ORDINATES							
LINKERKANT/LEFT HAND SIDE				REGTERKANT/RIGHT HAND SIDE			
	Y	X	WG29 °		Y	X	
L1	57 924.41	3 073	913.79	R1	57 766.52	3 074	009.95
L2	57 918.74	3 073	905.07	R2	57 758.83	3 073	998.23
L3	57 866.96	3 073	938.76	R3	57 776.94	3 073	984.38
L4	57 846.94	3 073	927.50	R4	57 794.95	3 073	937.52
L5	57 232.27	3 073	056.38	R5	57 771.05	3 073	881.54
L6	56 710.74	3 072	312.14	R6	57 638.31	3 073	693.06
L7	56 665.62	3 072	248.22	R7	57 618.56	3 073	673.81
L8	56 077.25	3 071	409.71	R8	57 475.75	3 073	470.53
L9	55 340.56	3 070	361.41	R9	57 384.99	3 073	328.61
L10	55 302.57	3 070	313.31	R10	57 180.59	3 073	037.09
L11	55 261.99	3 070	267.96	R11	57 147.63	3 073	001.60
L12	55 218.94	3 070	225.16	R12	57 031.53	3 072	833.68
L13	55 173.03	3 070	184.78	R13	56 992.40	3 072	768.96
L14	55 091.82	3 070	124.08	R14	56 686.99	3 072	333.91
L15	55 040.25	3 070	091.74	R15	56 638.74	3 072	264.98
L16	54 949.08	3 070	044.72	R16	56 053.91	3 071	431.71
L17	54 410.71	3 069	823.52	R17	55 514.84	3 070	664.02
L18	54 285.41	3 069	767.98	R18	55 310.78	3 070	376.32
L19	54 264.05	3 069	759.87	R19	55 247.72	3 070	299.94
L20	54 098.74	3 069	696.02	R20	55 176.62	3 070	230.41
L21	53 747.27	3 069	551.94	R21	55 097.96	3 070	168.43
L22	53 694.30	3 069	526.11	R22	55 014.00	3 070	114.95
L23	53 628.96	3 069	483.89	R23	54 964.23	3 070	090.96
L24	53 564.60	3 069	437.24	R24	54 943.33	3 070	079.11
L25	53 472.00	3 069	364.26	R25	54 877.10	3 070	048.30
L26	53 429.28	3 069	323.86	R26	54 290.86	3 069	808.70
L27	53 366.08	3 069	249.06	R27	54 080.32	3 069	722.97
L28	53 321.04	3 069	184.52	R28	53 731.11	3 069	580.19
L29	53 272.73	3 069	101.84	R29	53 642.20	3 069	535.09
L30	52 824.54	3 068	302.49	R30	53 556.36	3 069	481.62
L31	51 768.52	3 066	420.00	R31	53 480.08	3 069	418.13
L32	51 696.31	3 066	279.93	R32	53 408.21	3 069	348.67
L33	51 697.41	3 066	292.16	R33	53 343.52	3 069	272.41
L34	51 558.65	3 066	045.37	R34	53 286.45	3 069	190.68
L35	51 252.59	3 065	499.22	R35	53 248.40	3 069	123.81
L36	51 149.27	3 065	314.84	R36	52 790.83	3 068	308.03
L37	51 147.43	3 065	301.26	R37	52 785.88	3 068	308.84
L38	50 860.76	3 064	790.79	R38	52 536.92	3 067	863.57
L39	50 863.24	3 064	775.19	R39	52 540.95	3 067	861.92
L40	50 853.11	3 064	779.48	R40	51 704.38	3 066	369.98
L41	50 490.69	3 064	141.76	R41	51 528.59	3 066	056.51
L42	50 314.16	3 063	825.54	R42	51 214.32	3 065	496.68
L43	50 266.22	3 063	733.29	R43	51 021.91	3 065	155.44
L44	50 227.61	3 063	656.96	R44	50 851.42	3 064	849.52
L45	50 218.54	3 063	655.63	R45	50 817.68	3 064	794.52
L46	49 918.46	3 063	120.08	R46	50 624.57	3 064	444.66
L47	49 887.30	3 063	064.52	R47	50 279.85	3 063	828.06
L48	49 879.92	3 063	046.40	R48	50 259.37	3 063	792.74
L49	49 656.64	3 062	653.68	R49	50 230.29	3 063	741.40
L50	49 071.96	3 061	611.01	R50	50 179.12	3 063	649.88
L51	49 020.63	3 061	507.24	R51	49 889.27	3 063	133.57

Vel	7	Van	8	P1265/25
Sheet		of		

PADRESERWE KOÖRDINATE / ROAD RESERVE CO-ORDINATES					
LINKERKANT/LEFT HAND SIDE			REGTERKANT/RIGHT HAND SIDE		
	Y	X	WG29°	Y	X
L52	48 996.73	3 061	441.85	R52	49 847.15 3 063 063.52
L53	48 965.90	3 061	324.58	R53	49 630.74 3 062 672.74
L54	48 790.88	3 060	455.76	R54	49 054.17 3 061 644.50
L55	48 532.06	3 059	164.91	R55	49 010.29 3 061 560.78
L56	48 208.55	3 057	556.15	R56	48 982.66 3 061 494.18
L57	48 118.27	3 057	109.14	R57	48 966.28 3 061 488.54
L58	47 788.40	3 055	466.24	R58	48 952.07 3 061 418.21
L59	47 746.62	3 055	258.33	R59	48 757.57 3 060 450.58
L60	47 738.11	3 055	205.69	R60	48 504.20 3 059 190.09
L61	47 725.29	3 055	128.21	R61	48 182.14 3 057 587.89
L62	47 639.99	3 054	727.31	R62	48 075.11 3 057 052.85
L63	47 620.55	3 054	633.00	R63	47 786.21 3 055 617.61
L64	47 383.68	3 053	454.72	R64	47 724.27 3 055 311.24
L65	47 209.40	3 052	589.33	R65	47 696.37 3 055 185.72
L66	47 173.93	3 052	412.00	R66	47 665.83 3 055 119.85
L67	47 154.73	3 052	332.64	R67	47 589.33 3 054 659.49
L68	47 129.38	3 052	255.59	R68	47 579.42 3 054 599.85
L69	47 101.80	3 052	189.23	R69	47 580.38 3 054 594.62
L70	47 056.84	3 052	091.51	R70	47 339.17 3 053 394.27
L71	46 272.91	3 050	380.33	R71	47 167.25 3 052 537.92
				R72	47 143.23 3 052 419.98
				R73	47 124.14 3 052 341.18
				R74	47 100.83 3 052 269.61
				R75	47 036.28 3 052 122.04
				R76	47 017.97 3 052 082.36
				R77	46 243.61 3 050 392.65

Vel	8	Van	8	P1265/25
Sheet		of		