

---

**GOVERNMENT NOTICES • GOEWERMENTSKENNISGEWINGS**

---

**DEPARTMENT OF TRANSPORT**

NO. 7572

8 June 2026

**THE SOUTH AFRICAN NATIONAL ROADS  
AGENCY SOC LIMITED**Registration No: 1998/009584/30

---

**DECLARATION AMENDMENT OF NATIONAL ROAD R26 SECTION 11**

AMENDMENT OF DECLARATION No. 5578 OF 2024.

By virtue of section 40(1)(b) of the South African National Roads Agency Limited and the National Roads Act 1998 (Act No. 7 of 1998), I hereby amend Declaration No. 5578 of 2024 by substituting paragraph C of the Schedule, with the accompanying sheets 1 to 8 of Plan No. P1265/25.

**(National Road R26 Section 11: Reitz – Tweeling)**  

---

**MINISTER OF TRANSPORT**

DEPARTEMENT VAN VERVOER

NO. 7572

8 Junie 2026

**DIE SUID-AFRIKAANSE NASIONALE  
PADAGENTSKAP MSB BEPERK**

Registrasie No: 1998/009584/30

**VERKLARING WYSIGING VAN NASIONALE PAD R26 SEKSIE 11**

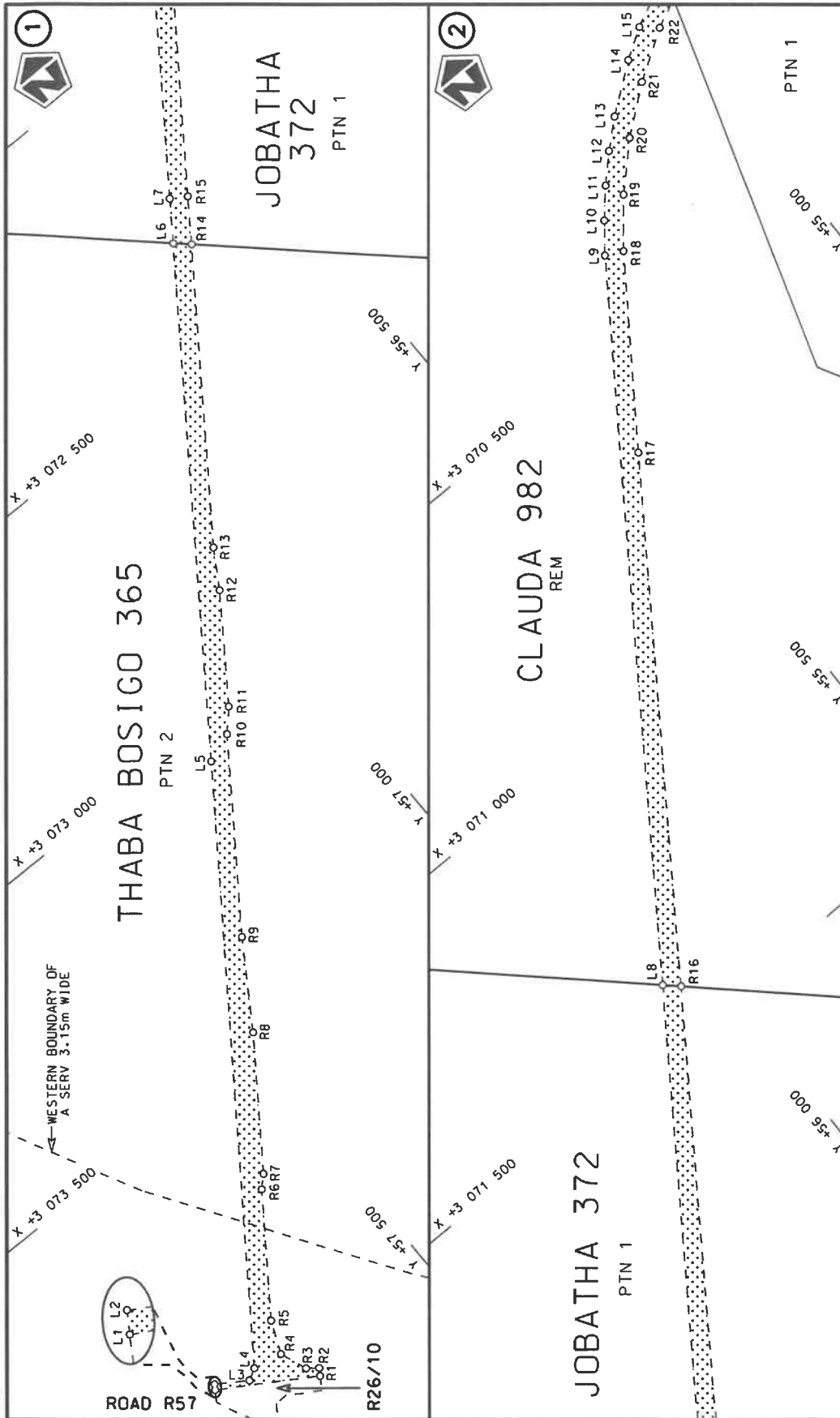
WYSIGING VAN VERKLARING No. 5578 VAN 2024.

Kragtens Artikel 40(1)(b) van die Suid-Afrikaanse Nasionale Padagentskap Beperk en Nasionale Paaie Wet 1998 (Wet No. 7 van 1998), wysig ek hiermee Verklaring No. 5578 van 2024 deur paragraaf C van die Skedule te vervang, met bygaande velle 1 tot 8 van Plan No. P1265/25.

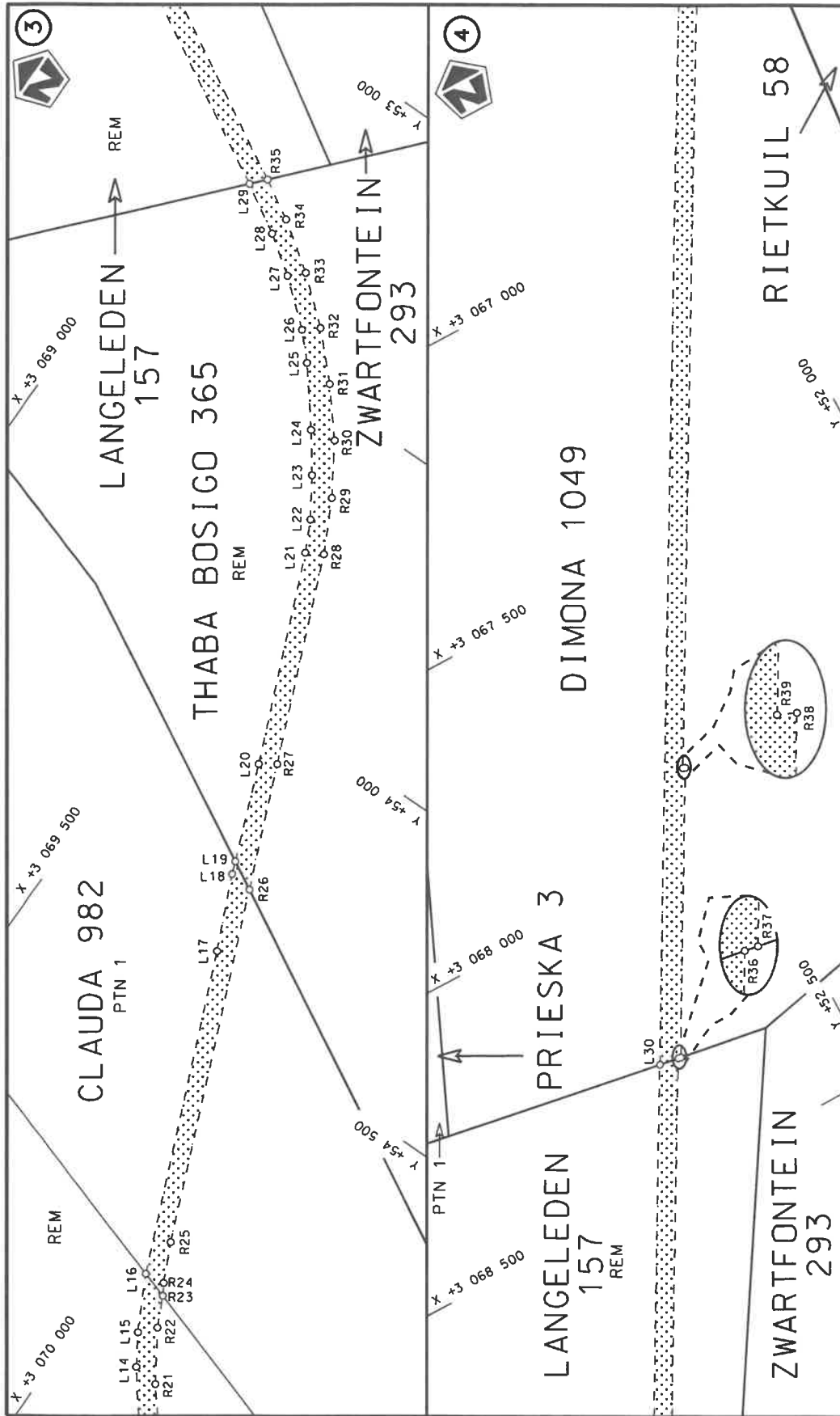
**(Nasionale Pad R26 Seksie 11: Reitz – Tweeling)**



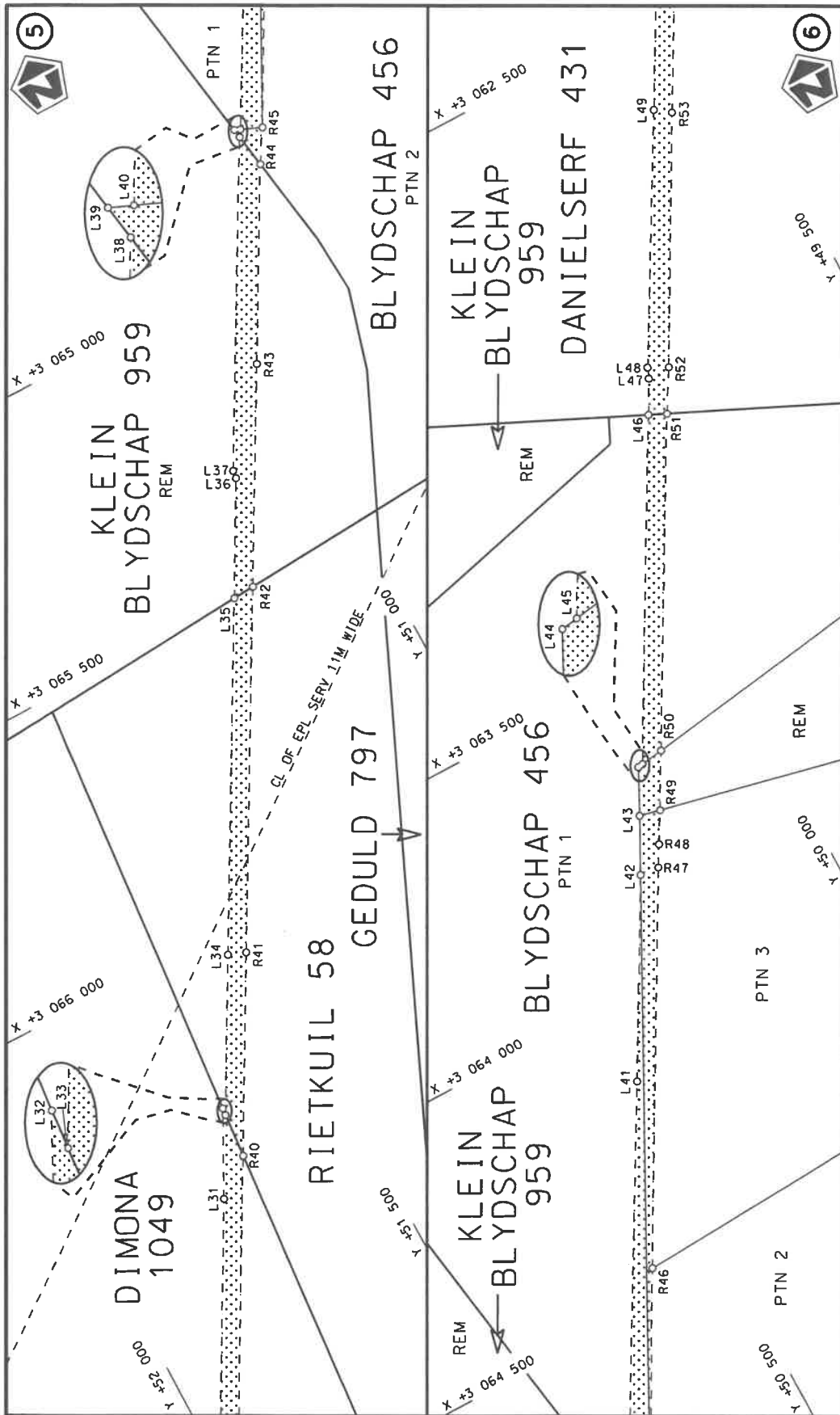
**MINISTER VAN VERVOER**



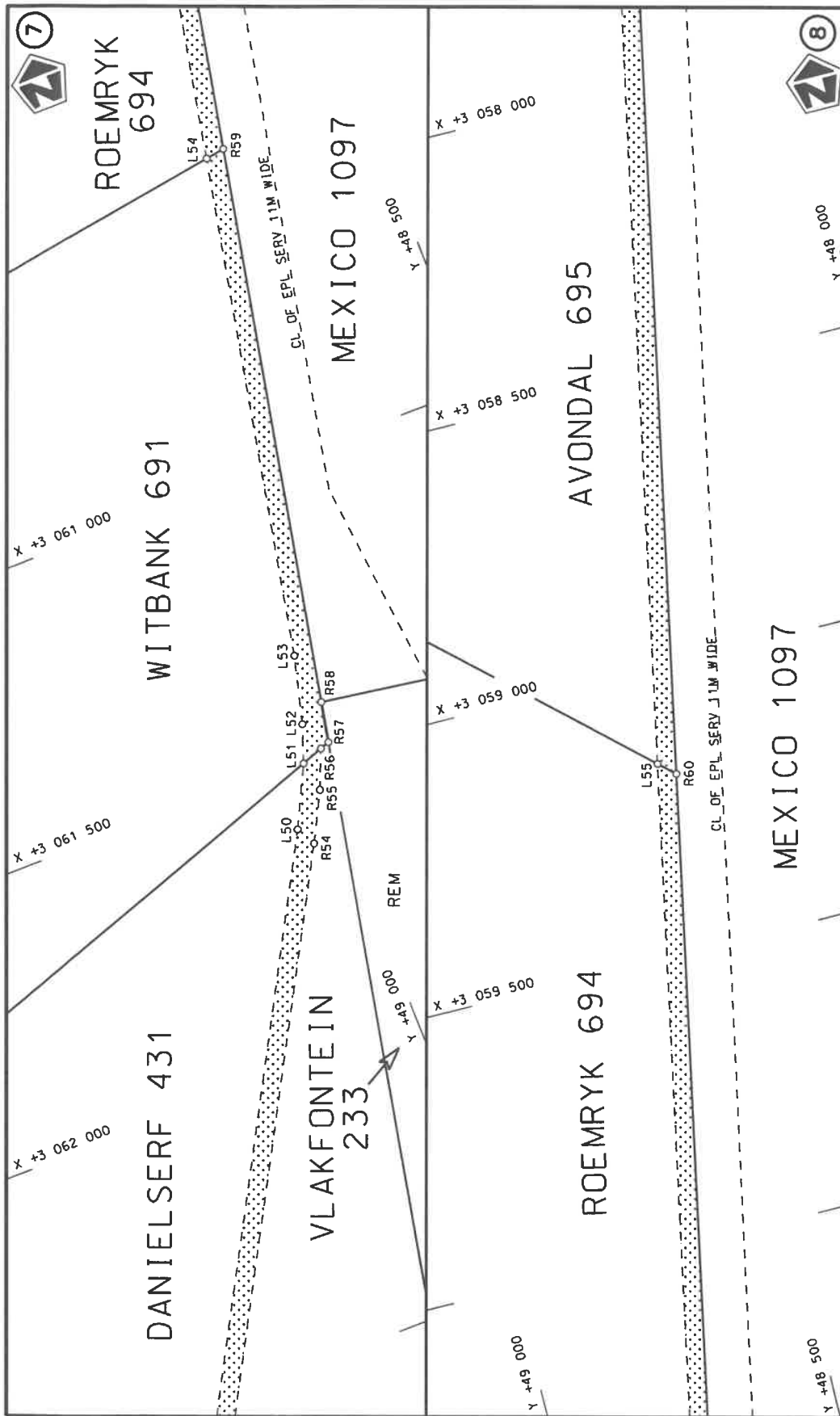
<p>Die Suid Afrikaanse Nasionale Padagentskap MSB Bpk The South African National Roads Agency SOC Ltd</p>	<p>Die figuur getoon The figure shown</p>	<p>stel die padreserwe voor van 'n gedeelte represents the road reserve of a portion van Nasionale Roete R26 of National Route</p>	<p>Vel Sheet 1 van 8 of</p>
<p>Die figuur getoon The figure shown</p>		<p>11</p>	<p>Plan P1265/25</p>



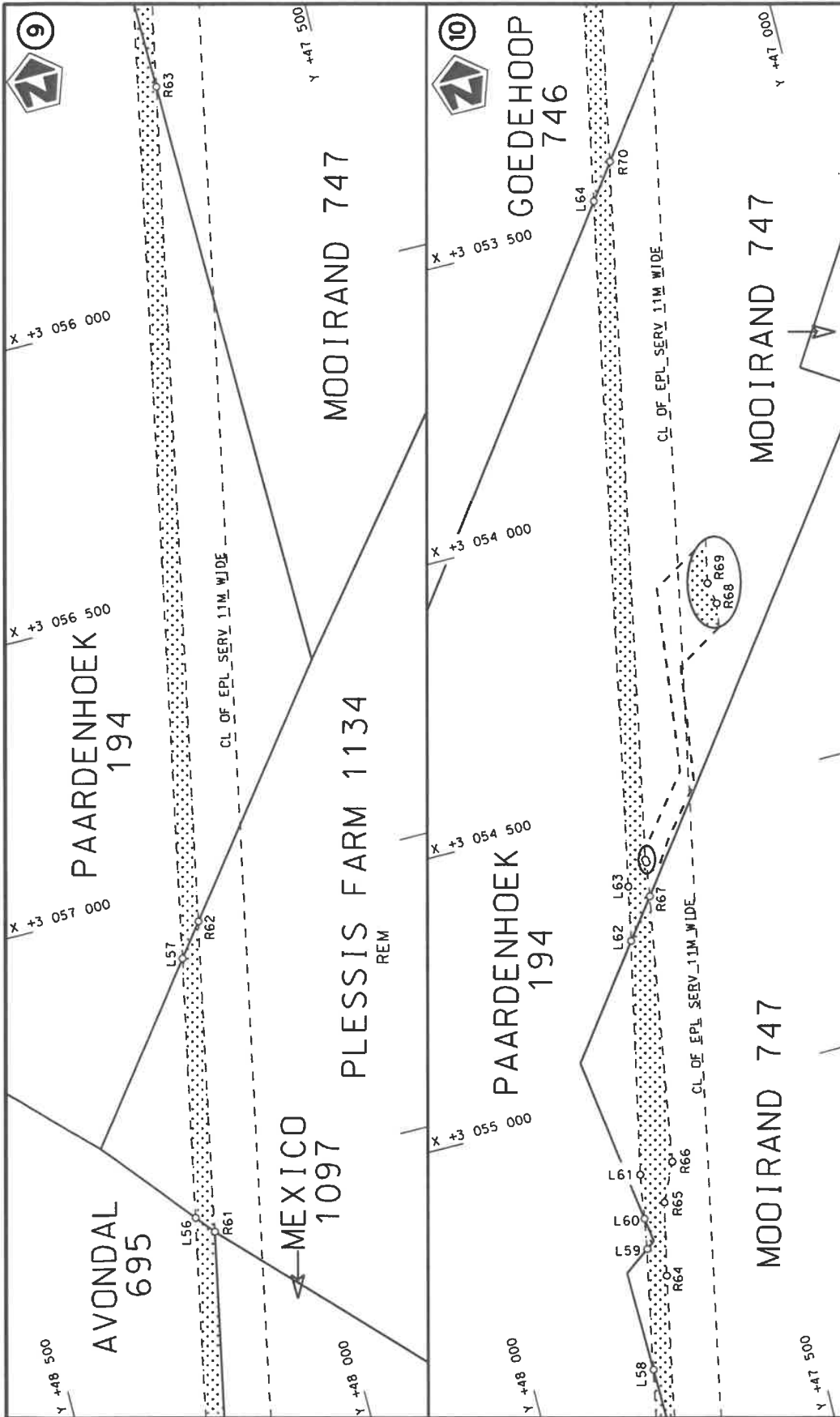
Die Suid Afrikaanse Nasionale Padagentskop MSB Bpk The South African National Roads Agency SOC Ltd	Die figuur getoon The figure shown	steldie padreserwe voor van 'n gedeelte represents the road reserve of a portion van Nasionale Roete R26 of National Route Section	Vel Sheet 2 of 8 Plan P1265/25
---	---------------------------------------	---	--------------------------------------

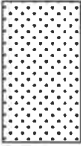


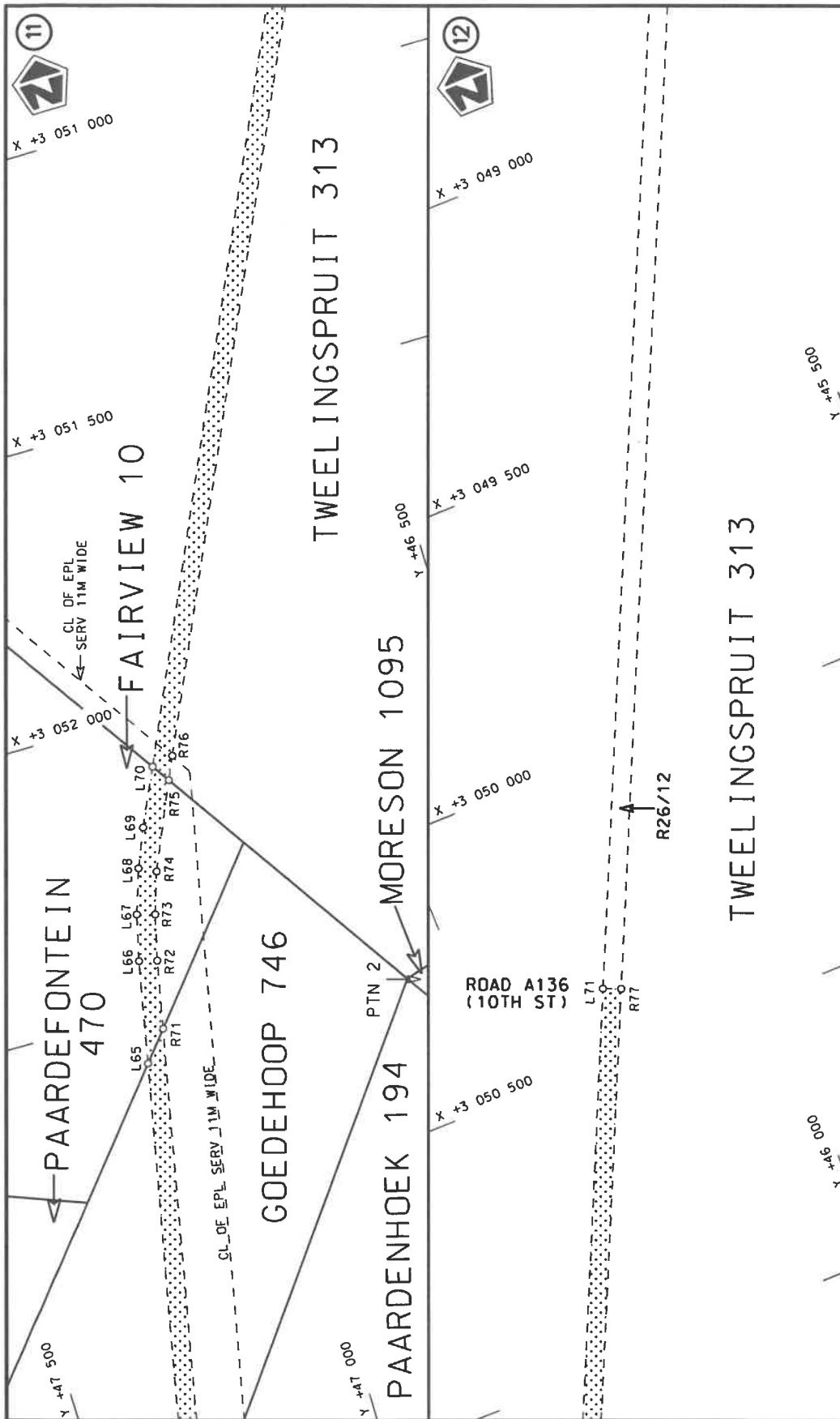
Die Suid Afrikaanse Nasionale Padogentskop MSB Bpk The South African National Roads Agency SOC Ltd	Die figuur getoon The figure shown	steldie padreserwe voor van 'n gedeelte represents the road reserve of a portion van Nasionale Roete R26 of National Route	Vel Sheet 3 of 8 Plan P1265/25
		11	
		R26	Seksie Section



Die Suid Afrikaanse Nasionale Padagentskap MSB Bpk The South African National Roads Agency SOC Ltd	Die figuur getoon The figure shown	steldie padreserwe voor van 'n gedeelte represents the road reserve of a portion van Nasionale Roete R26 of National Route of National Route	Vel Sheet 4 van of 8 Plan P1265/25
---	---------------------------------------	--	--



<p>Die Suid Afrikaanse Nasionale Padagentskap MSB Bpk The South African National Roads Agency SOC Ltd</p>	<p>Die figuur getoon The figure shown</p>	<p>stel die padreserwe voor van 'n gedeelte represents the road reserve of a portion van Nasionale Roete R26 of National Route</p>	<p>Vel Sheet 5 of 8 Plan P1265/25</p>
		<p>11</p>	<p>11</p>



Die Suid Afrikaanse Nasionale Padagentskap MSB Bpk The South African National Roads Agency SOC Ltd	Die figuur getoon The figure shown	steldie padreserwe voor van 'n gedeelte represents the road reserve of a portion van Nasionale Roete R26 of National Route Seksie Section	Vel Sheet 6 of 8 Plan P1265/25
---	---------------------------------------	--	--

PADRESERWE KOÖRDINATE / ROAD RESERVE CO-ORDINATES							
LINKERKANT/LEFT HAND SIDE				REGTERKANT/RIGHT HAND SIDE			
	Y	X	WG29 °		Y	X	
L1	57 924.41	3 073 913.79		R1	57 766.52	3 074 009.95	
L2	57 918.74	3 073 905.07		R2	57 758.83	3 073 998.23	
L3	57 866.96	3 073 938.76		R3	57 776.94	3 073 984.38	
L4	57 846.94	3 073 927.50		R4	57 794.95	3 073 937.52	
L5	57 232.27	3 073 056.38		R5	57 771.05	3 073 881.54	
L6	56 710.74	3 072 312.14		R6	57 638.31	3 073 693.06	
L7	56 665.62	3 072 248.22		R7	57 618.56	3 073 673.81	
L8	56 077.25	3 071 409.71		R8	57 475.75	3 073 470.53	
L9	55 340.56	3 070 361.41		R9	57 384.99	3 073 328.61	
L10	55 302.57	3 070 313.31		R10	57 180.59	3 073 037.09	
L11	55 261.99	3 070 267.96		R11	57 147.63	3 073 001.60	
L12	55 218.94	3 070 225.16		R12	57 031.53	3 072 833.68	
L13	55 173.03	3 070 184.78		R13	56 992.40	3 072 768.96	
L14	55 091.82	3 070 124.08		R14	56 686.99	3 072 333.91	
L15	55 040.25	3 070 091.74		R15	56 638.74	3 072 264.98	
L16	54 949.08	3 070 044.72		R16	56 053.91	3 071 431.71	
L17	54 410.71	3 069 823.52		R17	55 514.84	3 070 664.02	
L18	54 285.41	3 069 767.98		R18	55 310.78	3 070 376.32	
L19	54 264.05	3 069 759.87		R19	55 247.72	3 070 299.94	
L20	54 098.74	3 069 696.02		R20	55 176.62	3 070 230.41	
L21	53 747.27	3 069 551.94		R21	55 097.96	3 070 168.43	
L22	53 694.30	3 069 526.11		R22	55 014.00	3 070 114.95	
L23	53 628.96	3 069 483.89		R23	54 964.23	3 070 090.96	
L24	53 564.60	3 069 437.24		R24	54 943.33	3 070 079.11	
L25	53 472.00	3 069 364.26		R25	54 877.10	3 070 048.30	
L26	53 429.28	3 069 323.86		R26	54 290.86	3 069 808.70	
L27	53 366.08	3 069 249.06		R27	54 080.32	3 069 722.97	
L28	53 321.04	3 069 184.52		R28	53 731.11	3 069 580.19	
L29	53 272.73	3 069 101.84		R29	53 642.20	3 069 535.09	
L30	52 824.54	3 068 302.49		R30	53 556.36	3 069 481.62	
L31	51 768.52	3 066 420.00		R31	53 480.08	3 069 418.13	
L32	51 696.31	3 066 279.93		R32	53 408.21	3 069 348.67	
L33	51 697.41	3 066 292.16		R33	53 343.52	3 069 272.41	
L34	51 558.65	3 066 045.37		R34	53 286.45	3 069 190.68	
L35	51 252.59	3 065 499.22		R35	53 248.40	3 069 123.81	
L36	51 149.27	3 065 314.84		R36	52 790.83	3 068 308.03	
L37	51 147.43	3 065 301.26		R37	52 785.88	3 068 308.84	
L38	50 860.76	3 064 790.79		R38	52 536.92	3 067 863.57	
L39	50 863.24	3 064 775.19		R39	52 540.95	3 067 861.92	
L40	50 853.11	3 064 779.48		R40	51 704.38	3 066 369.98	
L41	50 490.69	3 064 141.76		R41	51 528.59	3 066 056.51	
L42	50 314.16	3 063 825.54		R42	51 214.32	3 065 496.68	
L43	50 266.22	3 063 733.29		R43	51 021.91	3 065 155.44	
L44	50 227.61	3 063 656.96		R44	50 851.42	3 064 849.52	
L45	50 218.54	3 063 655.63		R45	50 817.68	3 064 794.52	
L46	49 918.46	3 063 120.08		R46	50 624.57	3 064 444.66	
L47	49 887.30	3 063 064.52		R47	50 279.85	3 063 828.06	
L48	49 879.92	3 063 046.40		R48	50 259.37	3 063 792.74	
L49	49 656.64	3 062 653.68		R49	50 230.29	3 063 741.40	
L50	49 071.96	3 061 611.01		R50	50 179.12	3 063 649.88	
L51	49 020.63	3 061 507.24		R51	49 889.27	3 063 133.57	

Vel Sheet	7	Van of	8	P1265/25
-----------	---	--------	---	----------

PADRESERWE KOÖRDINATE / ROAD RESERVE CO-ORDINATES					
LINKERKANT/LEFT HAND SIDE			REGTERKANT/RIGHT HAND SIDE		
	Y	X	WG29°	Y	X
L52	48 996.73	3 061	441.85	R52	49 847.15 3 063 063.52
L53	48 965.90	3 061	324.58	R53	49 630.74 3 062 672.74
L54	48 790.88	3 060	455.76	R54	49 054.17 3 061 644.50
L55	48 532.06	3 059	164.91	R55	49 010.29 3 061 560.78
L56	48 208.55	3 057	556.15	R56	48 982.66 3 061 494.18
L57	48 118.27	3 057	109.14	R57	48 966.28 3 061 488.54
L58	47 788.40	3 055	466.24	R58	48 952.07 3 061 418.21
L59	47 746.62	3 055	258.33	R59	48 757.57 3 060 450.58
L60	47 738.11	3 055	205.69	R60	48 504.20 3 059 190.09
L61	47 725.29	3 055	128.21	R61	48 182.14 3 057 587.89
L62	47 639.99	3 054	727.31	R62	48 075.11 3 057 052.85
L63	47 620.55	3 054	633.00	R63	47 786.21 3 055 617.61
L64	47 383.68	3 053	454.72	R64	47 724.27 3 055 311.24
L65	47 209.40	3 052	589.33	R65	47 696.37 3 055 185.72
L66	47 173.93	3 052	412.00	R66	47 665.83 3 055 119.85
L67	47 154.73	3 052	332.64	R67	47 589.33 3 054 659.49
L68	47 129.38	3 052	255.59	R68	47 579.42 3 054 599.85
L69	47 101.80	3 052	189.23	R69	47 580.38 3 054 594.62
L70	47 056.84	3 052	091.51	R70	47 339.17 3 053 394.27
L71	46 272.91	3 050	380.33	R71	47 167.25 3 052 537.92
				R72	47 143.23 3 052 419.98
				R73	47 124.14 3 052 341.18
				R74	47 100.83 3 052 269.61
				R75	47 036.28 3 052 122.04
				R76	47 017.97 3 052 082.36
				R77	46 243.61 3 050 392.65

Vel	8	Van	8	P1265/25
Sheet		of		