
GOVERNMENT NOTICES • GOEWERMENTSKENNISGEWINGS

DEPARTMENT OF TRANSPORT

NO. 7570

8 June 2026

**THE SOUTH AFRICAN NATIONAL ROADS
AGENCY SOC LIMITED**Registration No: 1998/009584/30

DECLARATION AMENDMENT OF NATIONAL ROAD R34 SECTION 5

AMENDMENT OF DECLARATION No. 4014 OF 2023.

By virtue of section 40(1)(b) of the South African National Roads Agency Limited and the National Roads Act 1998 (Act No. 7 of 1998), I hereby amend Declaration No. 4014 of 2023 by substituting a part of paragraph B of the Schedule, being the descriptive declaration of the route from Odendaalsrus up to intersection with National Road R34 Section 6, with the accompanying sheets 1 to 7 of Plan No. P1267/25.

In the town of Odendaalsrus the R34 Section 5 enters the town from the south and follows the streets known as Cedar Avenue and Athea Road, at the time of declaration.

(National Road R34 Section 5: Odendaalsrus – R34 Section 6 Intersection)

MINISTER OF TRANSPORT

DEPARTEMENT VAN VERVOER

NO. 7570

8 Junie 2026

**DIE SUID-AFRIKAANSE NASIONALE
PADAGENTSKAP MSB BEPERK**

Registrasie No: 1998/009584/30

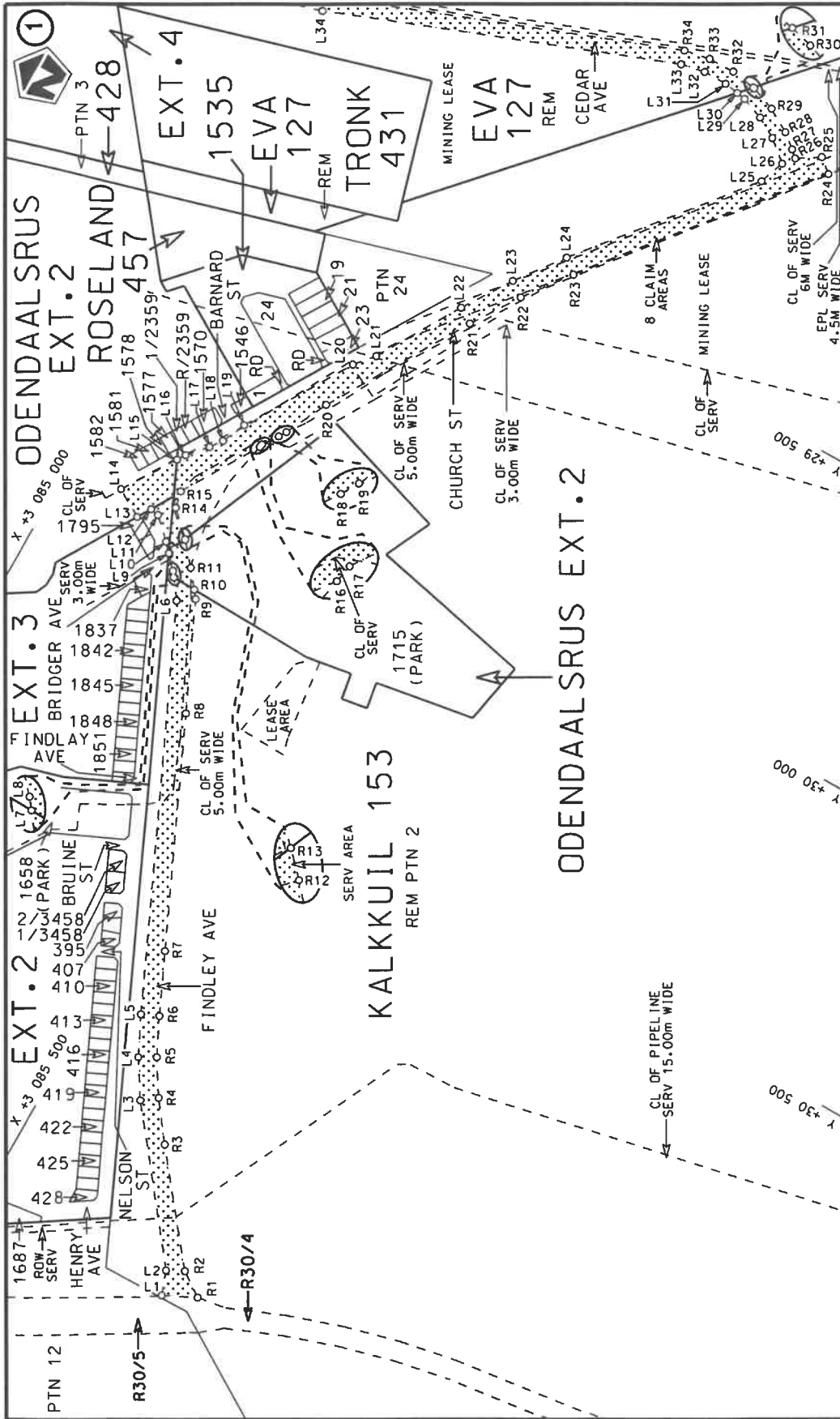
VERKLARING WYSIGING VAN NASIONALE PAD R34 SEKSIE 5

WYSIGING VAN VERKLARING No. 4014 VAN 2023.

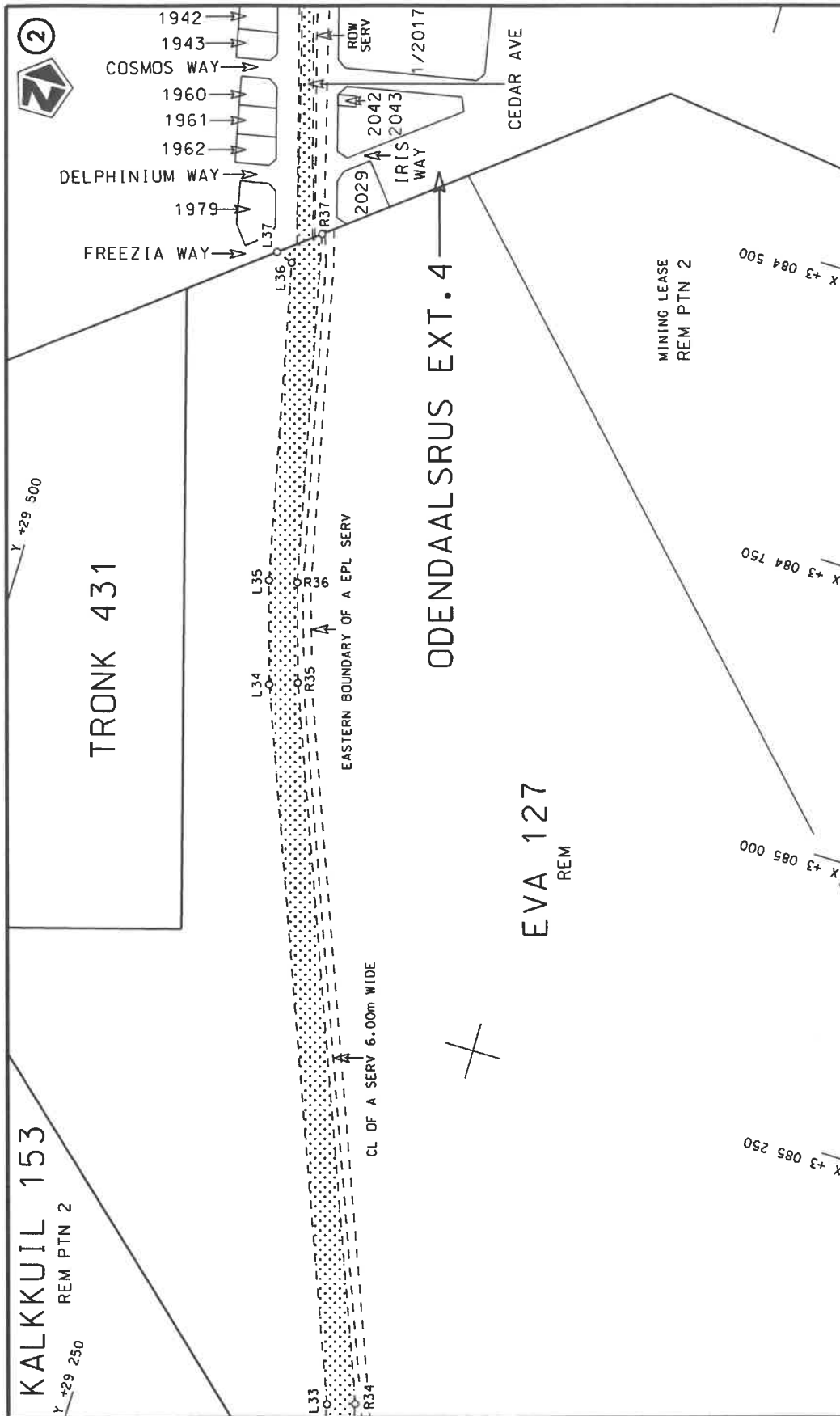
Kragtens Artikel 40(1)(b) van die Suid-Afrikaanse Nasionale Padagentskap Beperk en Nasionale Paaie Wet 1998 (Wet No. 7 van 1998), wysig ek hiermee Verklaring No. 4014 van 2023 deur 'n gedeelte van paragraaf B van die Skedule te vervang, synde die gedeelte van die beskrywende verklaring van die pad vanaf Odendaalsrus tot by interseksie met Nasionale Pad R34 Seksie 6, met bygaande velle 1 tot 7 van Plan No. P1267/25.

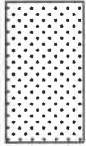
In die dorp Odendaalsrus kom die R34 Seksie 5 die dorp binne van uit die Suide en volg die strate bekend as Cedarlaan en Athea Weg, tydens datum van verklaring.

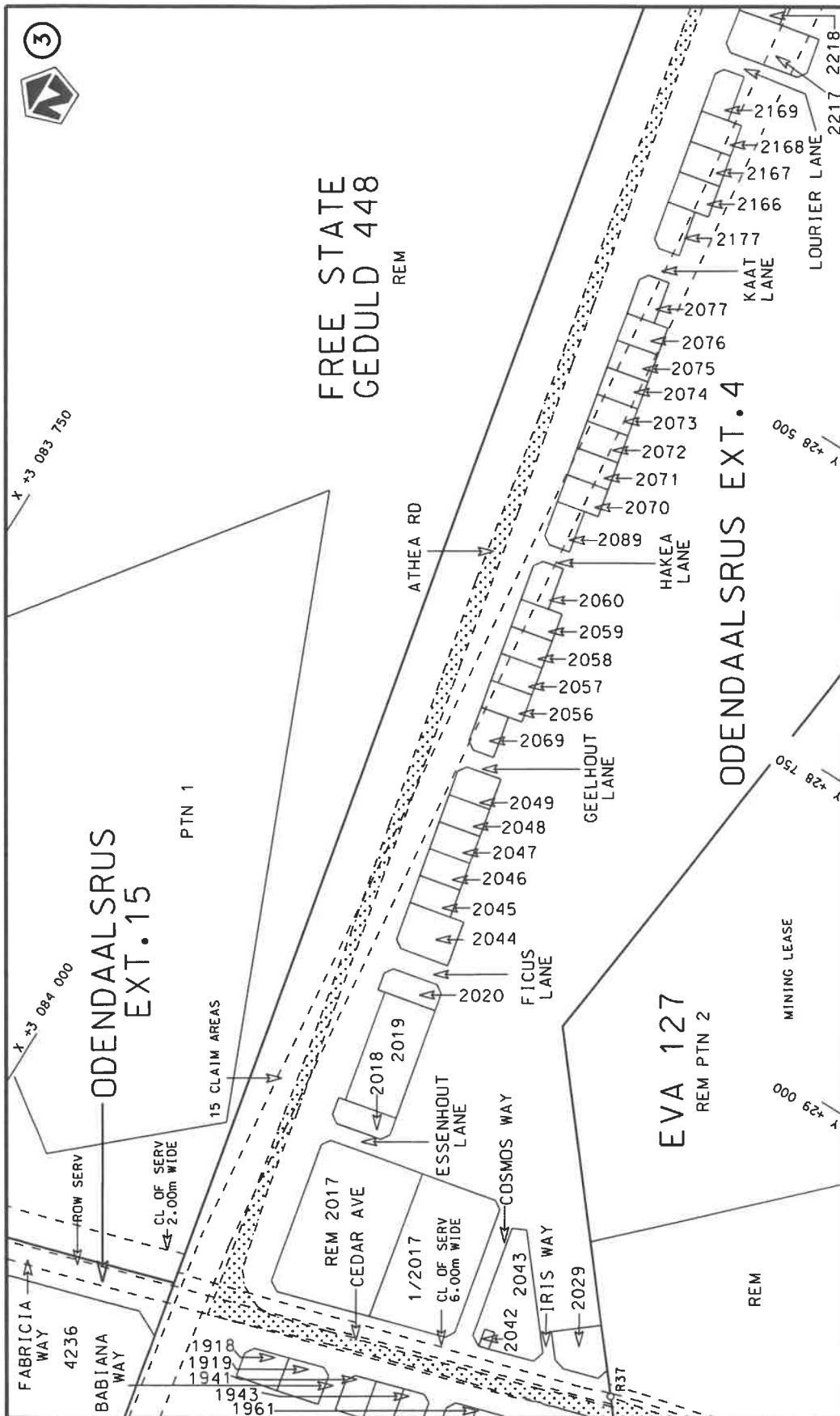
(Nasionale Pad R34 Seksie 5: Odendaalsrus – R34 Seksie 6 Interseksie)**MINISTER VAN VERVOER**




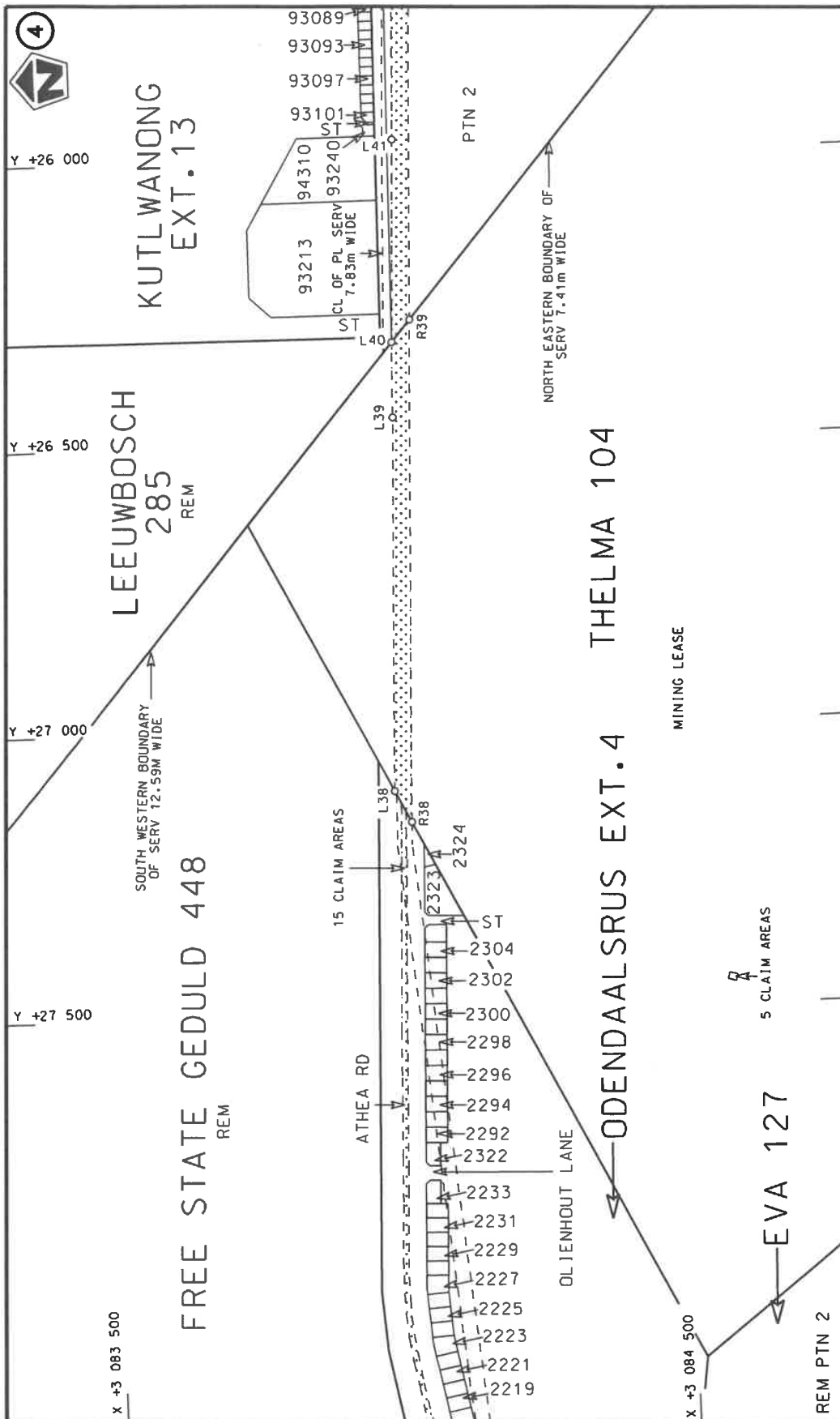
<p>Die Suid Afrikaanse Nasionale Padagentskap MSB Bpk The South African National Roads Agency SOC Ltd</p>	<p>Die figuur getoon The figure shown</p>		<p>stel die padreserwe voor van 'n gedeelte represents the road reserve of a portion van Nasionale Roete R34 of National Route</p>	<p>5</p>	<p>Plan P1267/25</p>
		<p>Vel Sheet 1 of 7</p>			



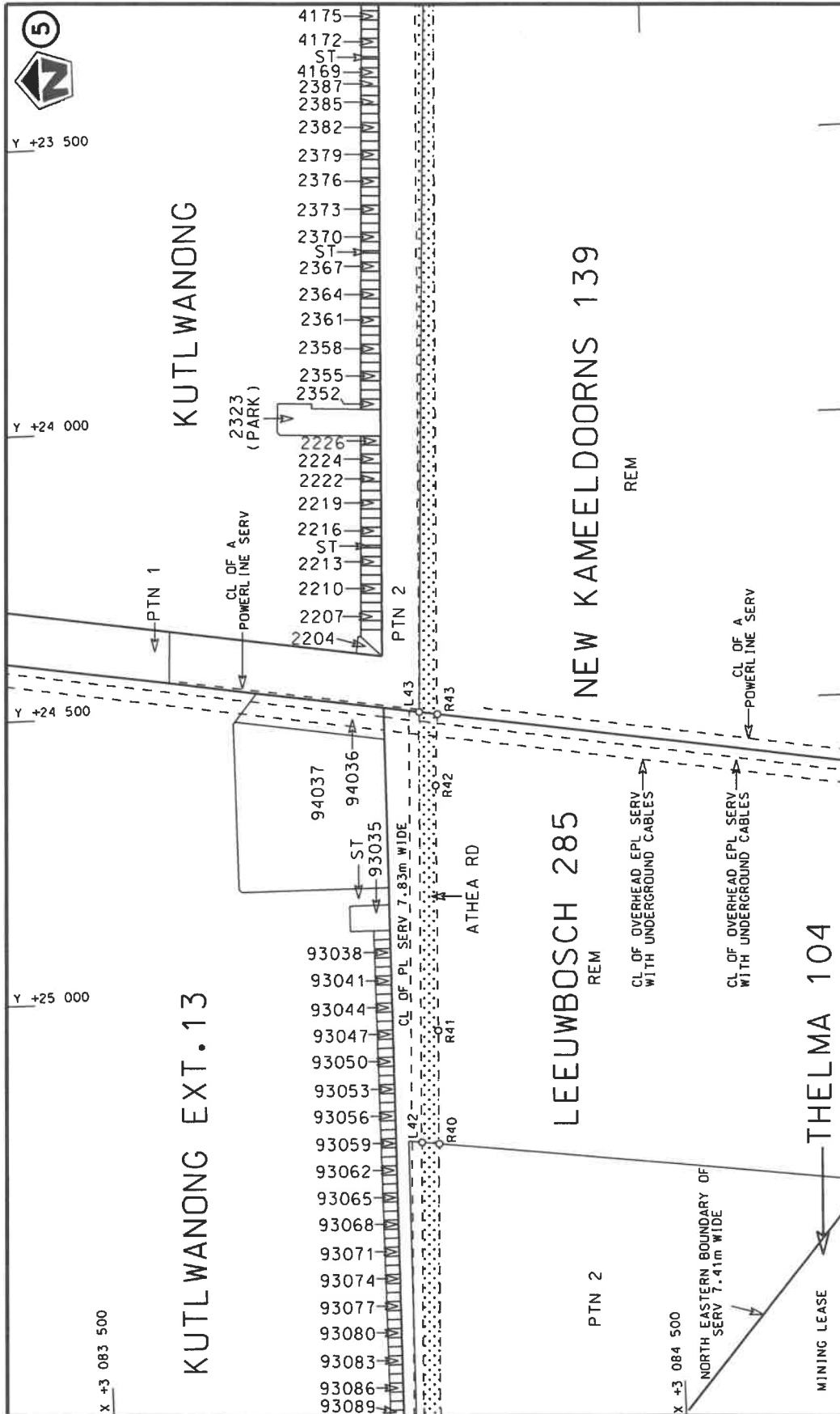
Die Suid Afrikaanse Nasionale Padagentskap MSB Bpk The South African National Roads Agency SOC Ltd	Die figuur getoon The figure shown	 stelt die padreserwe voor van 'n gedeelte van Nasionale Roete R34	Vel Sheet 2 of 7
			Plan P1267/25



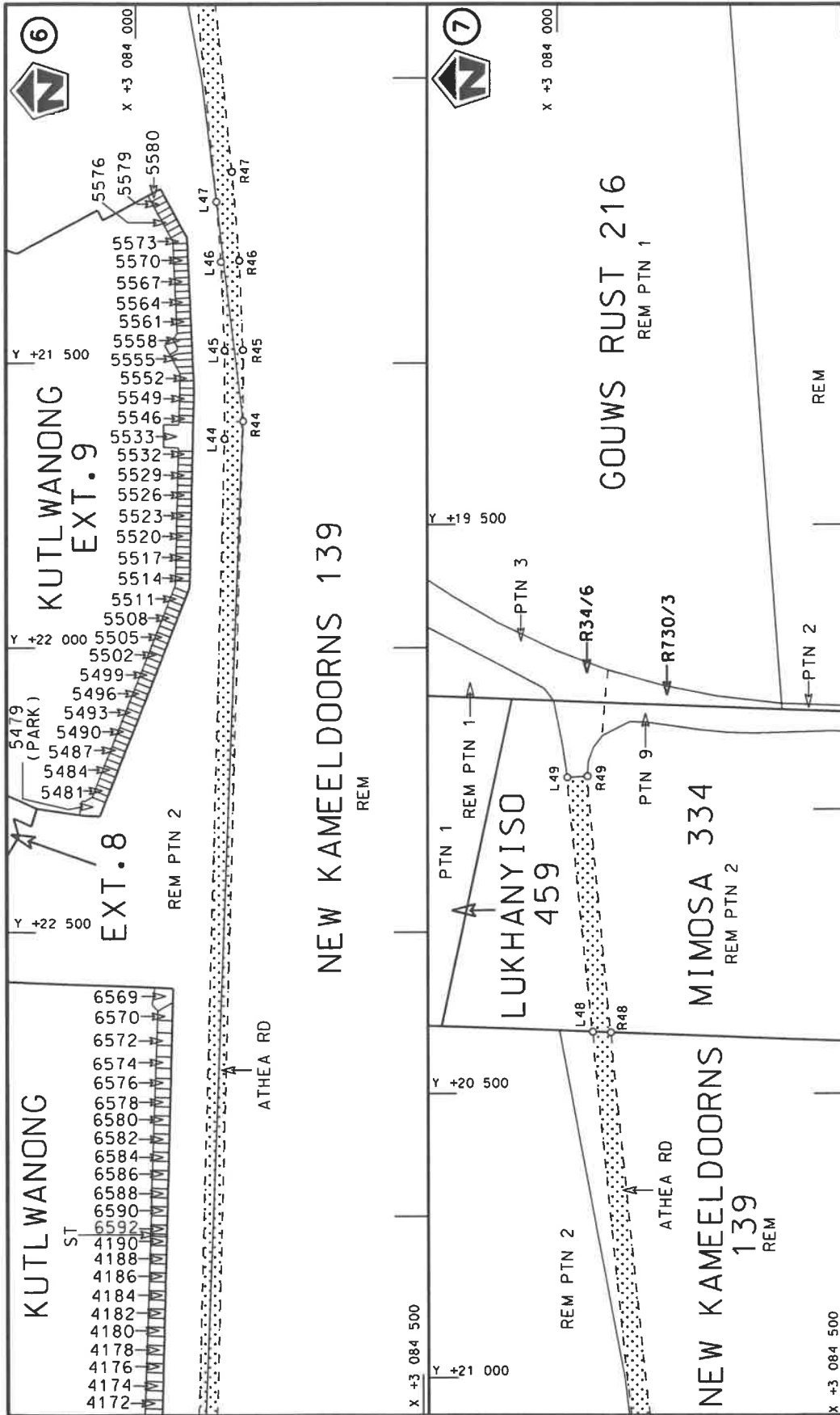
<p>Die Suid Afrikaanse Nasionale Podagentskap MSB Bpk The South African National Roads Agency SOC Ltd</p>	<p>Die figuur getoon The figure shown</p> 	<p>steldie padreserwe voor van 'n gedeelte represents the road reserve of a portion van Nasionale Roete R34 of National Route R34</p> <p>Seksie Section</p>	<p>Vel Sheet</p> <p>3 of 7</p> <p>Plan P1267/25</p>
---	---	---	---




Die Suid Afrikaanse Nasionale Padagentskap MSB Bpk The South African National Roads Agency SOC Ltd	Die figuur getoon The figure shown	steldie padreserwe voor van 'n gedeelte represents the road reserve of a portion van Nasionale Roete R34 of National Route R34 Section	Vel Sheet 4 of 7 Plan P1267/25
---	---------------------------------------	---	-----------------------------------



Die Suid Afrikaanse Nasionale Padagentskap MSB Bpk The South African National Roads Agency SOC Ltd	Die figuur getoon The figure shown	steldie padreserwe voor van 'n gedeelte represents the road reserve of a portion van Nasionale Roete R34 of National Route R34 Sektie Section	Vel Sheet 5 of 7 Plan P1267/25
---	---------------------------------------	--	--



<p>Die Suid Afrikaanse Nasionale Padagentskap MSB Bpk The South African National Roads Agency SOC Ltd</p>	<p>Die figuur getoon The figure shown</p> 	<p>steldie padreserwe voor van 'n gedeelte represents the road reserve of a portion van Nasionale Roete R34 of National Route</p>	<p>Vel Sheet 6 of 7 Plan P1267/25</p>
---	---	---	---

PADRESERVE KOÖRDINATE / ROAD RESERVE CO-ORDINATES						
LINKERKANT/LEFT HAND SIDE				REGTERKANT/RIGHT HAND SIDE		
	Y	X	WG27 °		Y	X
L1	31 357.37	3 085 855.63		R1	31 328.49	3 085 911.74
L2	31 314.19	3 085 840.93		R2	31 299.14	3 085 869.78
L3	31 076.25	3 085 655.63		R3	31 122.95	3 085 730.53
L4	31 011.95	3 085 615.33		R4	31 056.83	3 085 681.13
L5	30 944.20	3 085 582.50		R5	30 996.26	3 085 643.22
L6	30 282.46	3 085 280.98		R6	30 931.20	3 085 611.75
L7	30 249.79	3 085 256.43		R7	30 827.00	3 085 564.46
L8	30 240.54	3 085 249.47		R8	30 446.19	3 085 391.78
L9	30 217.42	3 085 227.93		R9	30 264.27	3 085 308.06
L10	30 202.18	3 085 213.72		R10	30 251.17	3 085 297.99
L11	30 168.42	3 085 178.27		R11	30 219.99	3 085 274.00
L12	30 165.45	3 085 163.00		R12	30 182.84	3 085 241.30
L13	30 189.37	3 085 148.52		R13	30 182.08	3 085 240.47
L14	30 160.26	3 085 100.42		R14	30 142.14	3 085 199.44
L15	30 067.43	3 085 159.89		R15	30 112.86	3 085 192.75
L16	30 053.37	3 085 168.90		R16	29 977.42	3 085 274.23
L17	30 020.70	3 085 198.19		R17	29 971.77	3 085 275.34
L18	30 000.12	3 085 213.20		R18	29 944.97	3 085 293.75
L19	29 958.04	3 085 231.62		R19	29 931.92	3 085 301.59
L20	29 771.91	3 085 344.70		R20	29 856.44	3 085 338.46
L21	29 739.10	3 085 373.01		R21	29 609.33	3 085 487.63
L22	29 592.89	3 085 460.39		R22	29 525.86	3 085 542.19
L23	29 507.49	3 085 515.98		R23	29 446.02	3 085 602.21
L24	29 425.92	3 085 577.31		R24	29 072.83	3 085 906.00
L25	29 141.81	3 085 808.59		R25	29 052.62	3 085 881.19
L26	29 097.43	3 085 825.37		R26	29 078.04	3 085 841.15
L27	29 066.83	3 085 788.20		R27	29 066.84	3 085 828.42
L28	29 046.27	3 085 751.56		R28	29 046.83	3 085 803.19
L29	29 031.55	3 085 711.26		R29	29 023.02	3 085 761.73
L30	29 028.83	3 085 694.51		R30	29 007.27	3 085 716.91
L31	29 024.74	3 085 669.31		R31	29 006.89	3 085 714.52
L32	29 024.87	3 085 626.63		R32	28 999.79	3 085 670.75
L33	29 033.97	3 085 584.21		R33	29 000.82	3 085 623.12
L34	29 260.90	3 084 991.78		R34	29 010.10	3 085 577.37
L35	29 286.91	3 084 904.20		R35	29 237.28	3 084 983.21
L36	29 346.81	3 084 631.50		R36	29 262.54	3 084 899.01
L37	29 361.60	3 084 626.15		R37	29 328.25	3 084 599.69
L38	27 111.00	3 084 002.49		R38	27 166.16	3 084 030.51
L39	26 456.47	3 084 021.05		R39	26 286.44	3 084 055.23
L40	26 325.03	3 084 022.98		R40	25 265.26	3 084 084.83
L41	25 970.95	3 084 035.04		R41	25 065.57	3 084 090.62
L42	25 261.68	3 084 054.73		R42	24 635.46	3 084 100.86
L43	24 505.83	3 084 075.70		R43	24 510.51	3 084 107.36
L44	21 632.51	3 084 155.92		R44	21 601.83	3 084 188.78
L45	21 477.28	3 084 156.24		R45	21 476.67	3 084 188.24
L46	21 322.09	3 084 150.01		R46	21 320.13	3 084 181.95
L47	21 216.57	3 084 142.06		R47	21 164.04	3 084 169.06
L48	20 391.14	3 084 061.20		R48	20 392.31	3 084 092.98
L49	19 943.96	3 084 017.40		R49	19 942.02	3 084 052.65

Vel Sheet	7	Van of	7	P1267/25
--------------	---	-----------	---	----------

Printed by and obtainable from the Government Printer, Bosman Street, Private Bag X85, Pretoria, 0001
Contact Centre Tel: 012-748 6200. eMail: info.egazette@gpw.gov.za
Publications: Tel: (012) 748 6053, 748 6061, 748 6065