
GOVERNMENT NOTICES • GOEWERMENTSKENNISGEWINGS

DEPARTMENT OF TRANSPORT

NO. 7568

8 June 2026

**THE SOUTH AFRICAN NATIONAL ROADS
AGENCY SOC LIMITED**Registration No: 1998/009584/30

DECLARATION AMENDMENT OF NATIONAL ROAD R380 SECTION 2

AMENDMENT OF DECLARATION No. 2670 OF 2022.

By virtue of section 40(1)(b) of the South African National Roads Agency Limited and the National Roads Act 1998 (Act No. 7 of 1998), I hereby amend Declaration No. 2670 of 2022 by substituting paragraph F of the Schedule, with the accompanying sheets 1 to 30 of Plan No. P1263/25.

(National Road R380 Section 2: Santoy – McCarthy’s Rest)

MINISTER OF TRANSPORT

DEPARTEMENT VAN VERVOER

NO. 7568

8 Junie 2026

**DIE SUID-AFRIKAANSE NASIONALE
PADAGENTSKAP MSB BEPERK**

Registrasie No: 1998/009584/30

VERKLARING WYSIGING VAN NASIONALE PAD R380 SEKSIE 2

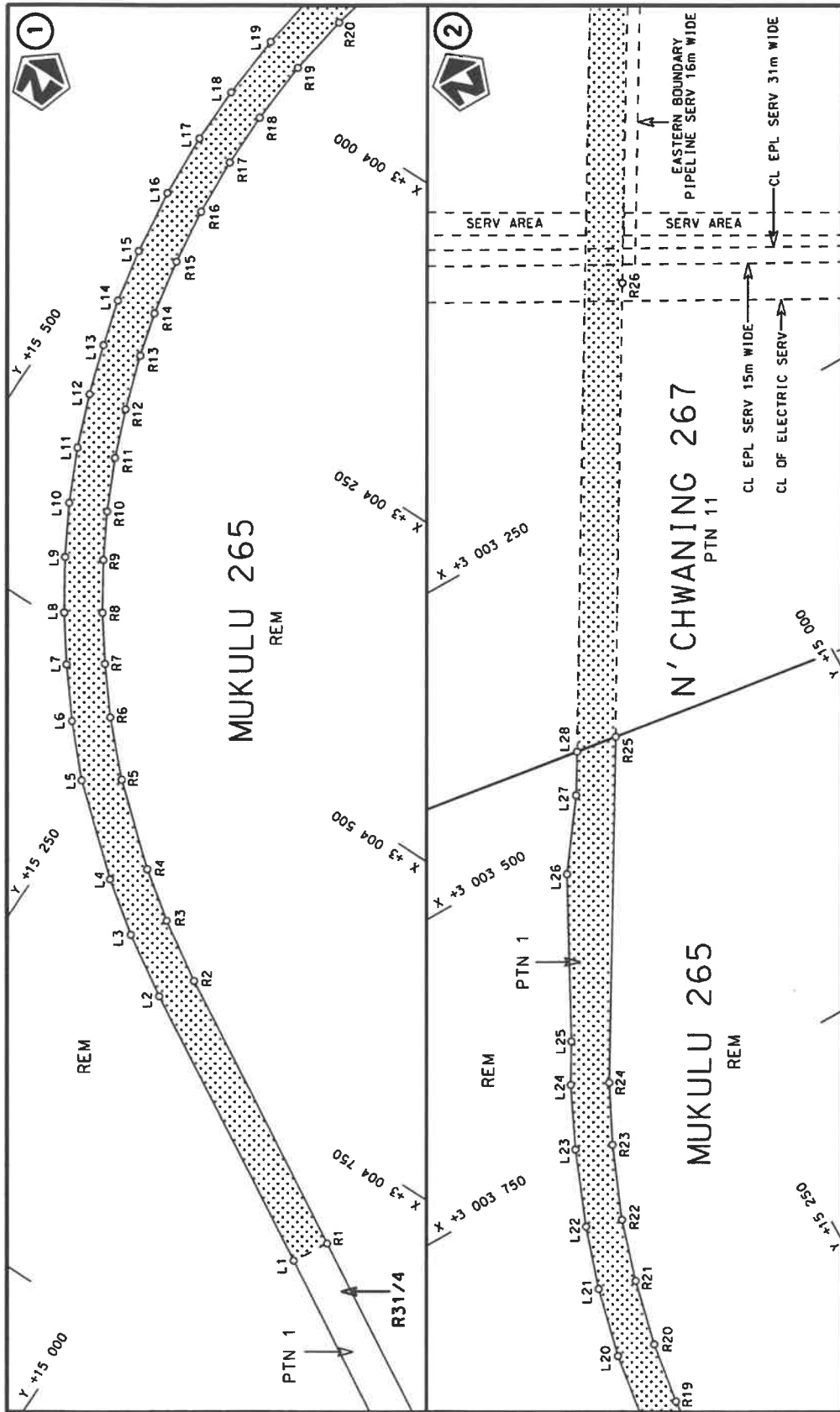
WYSIGING VAN VERKLARING No. 2670 VAN 2022.

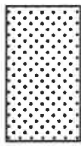
Kragtens Artikel 40(1)(b) van die Suid-Afrikaanse Nasionale Padagentskap Beperk en Nasionale Paaie Wet 1998 (Wet No. 7 van 1998), wysig ek hiermee Verklaring No. 2670 van 2022 deur paragraaf F van die Skedule te vervang, met bygaande velle 1 tot 30 van Plan No. P1263/25.

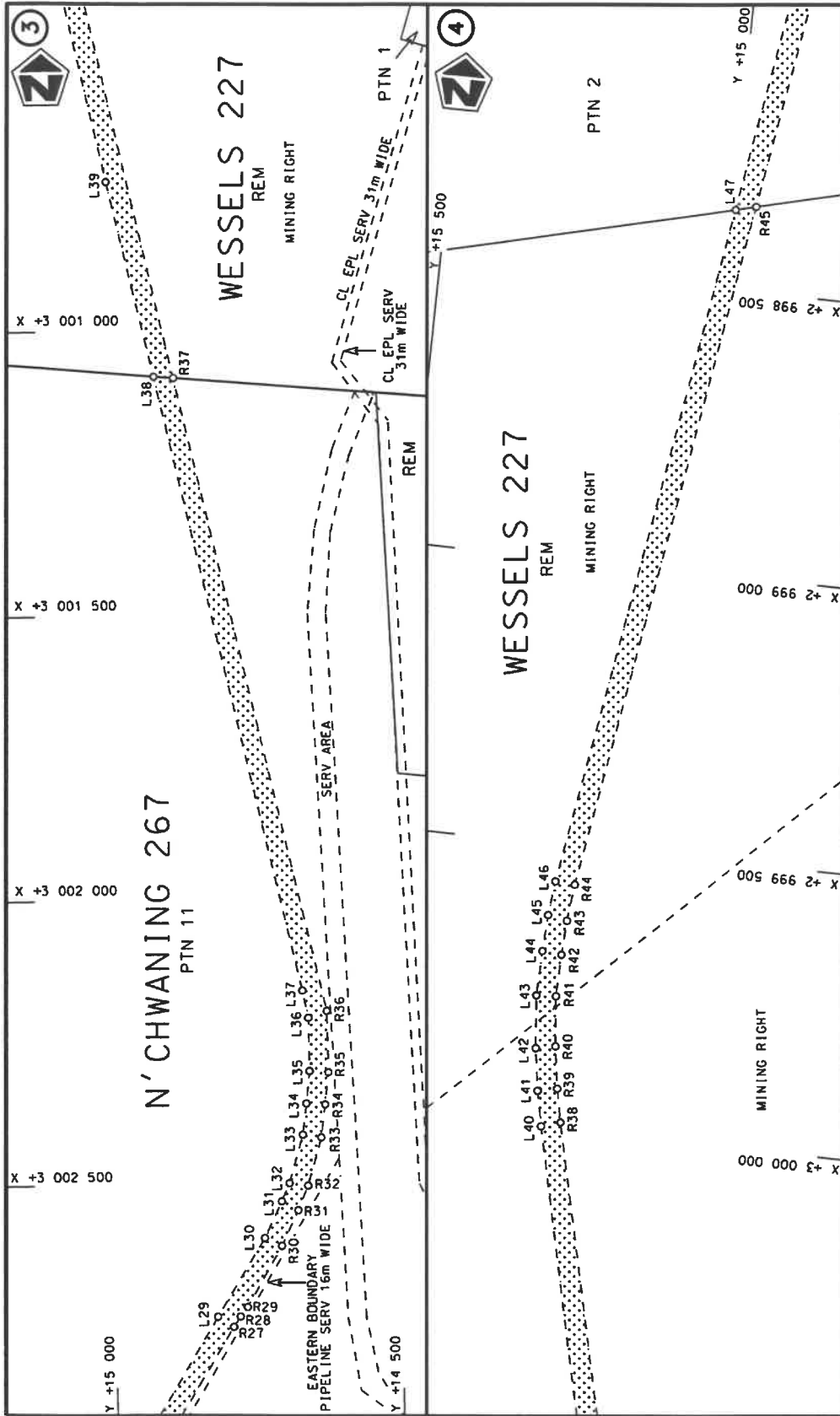
(Nasionale Pad R380 Seksie 2: Santoy – McCarthy's Rest)




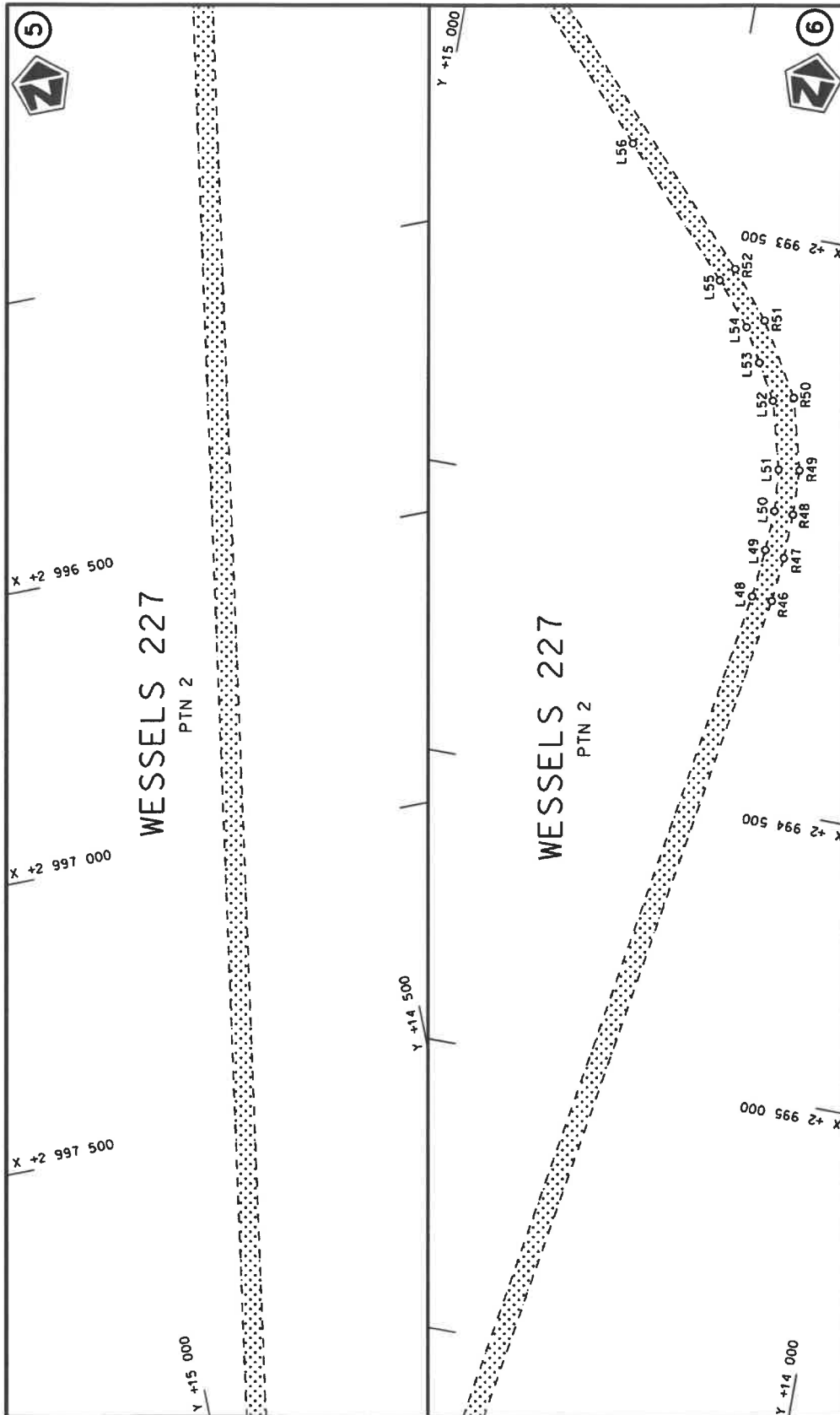
MINISTER VAN VERVOER




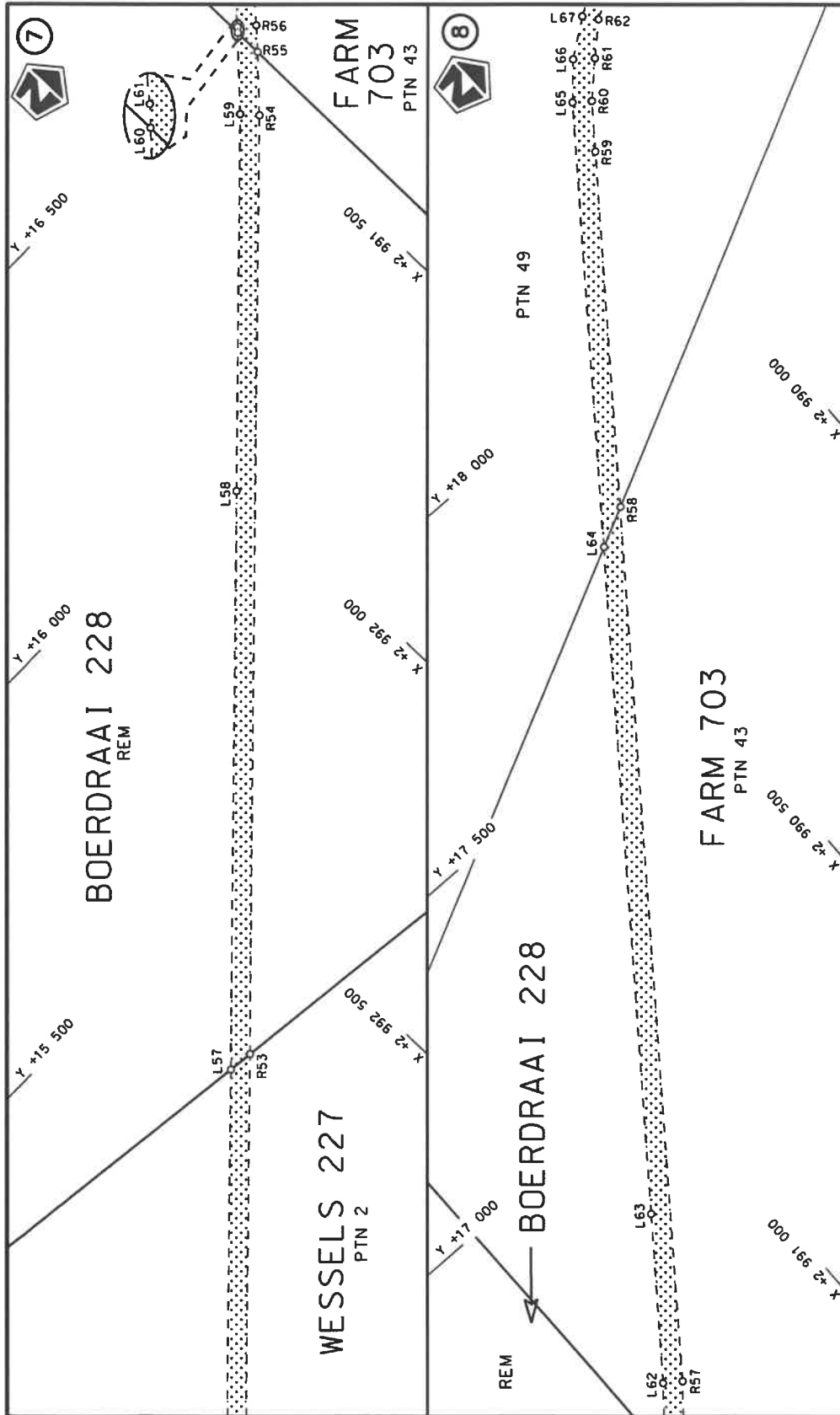
Die Suid Afrikaanse Nasionale Padagentskap MSB Bpk The South African National Roads Agency SOC Ltd	Die figuur getoon The figure shown		stel die padreserwe voor van 'n gedeelte represents the road reserve of a portion van Nasionale Roete R380 of National Route Section	
			2	Plan P1263/25
		Vel Sheet 1 of 30		



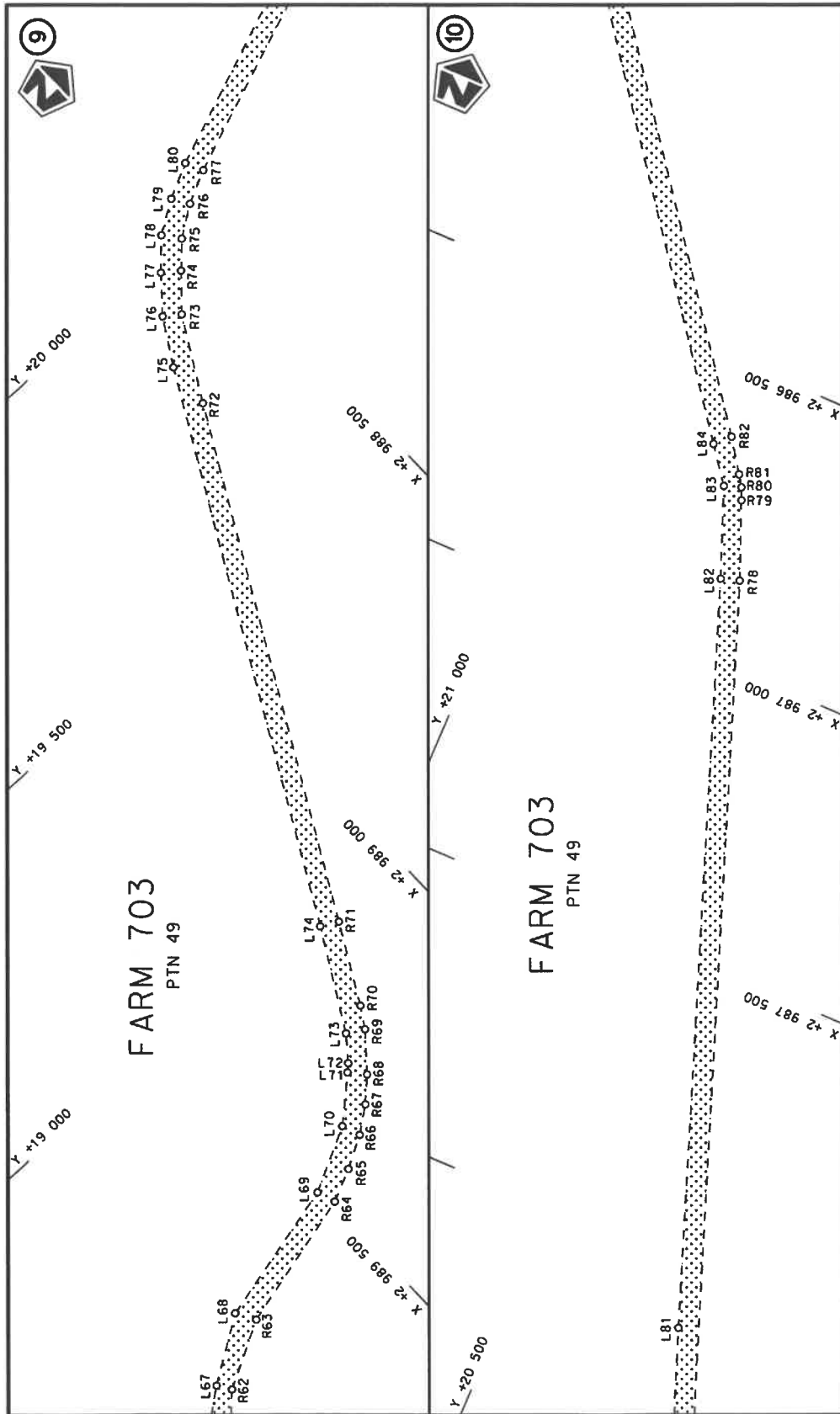
<p>Die Suid Afrikaanse Nasionale Padagentskap MSB Bpk The South African National Roads Agency SOC Ltd</p>	<p>Die figuur getoon The figure shown</p> 	<p>steldie padreserwe voor van 'n gedeelte represents the road reserve of a portion van Nasionale Roete R380 of National Route R380</p> <p>Seksie 2 Section</p>	<p>Vel Sheet 2 of 30 Plan P1263/25</p>
---	---	---	--




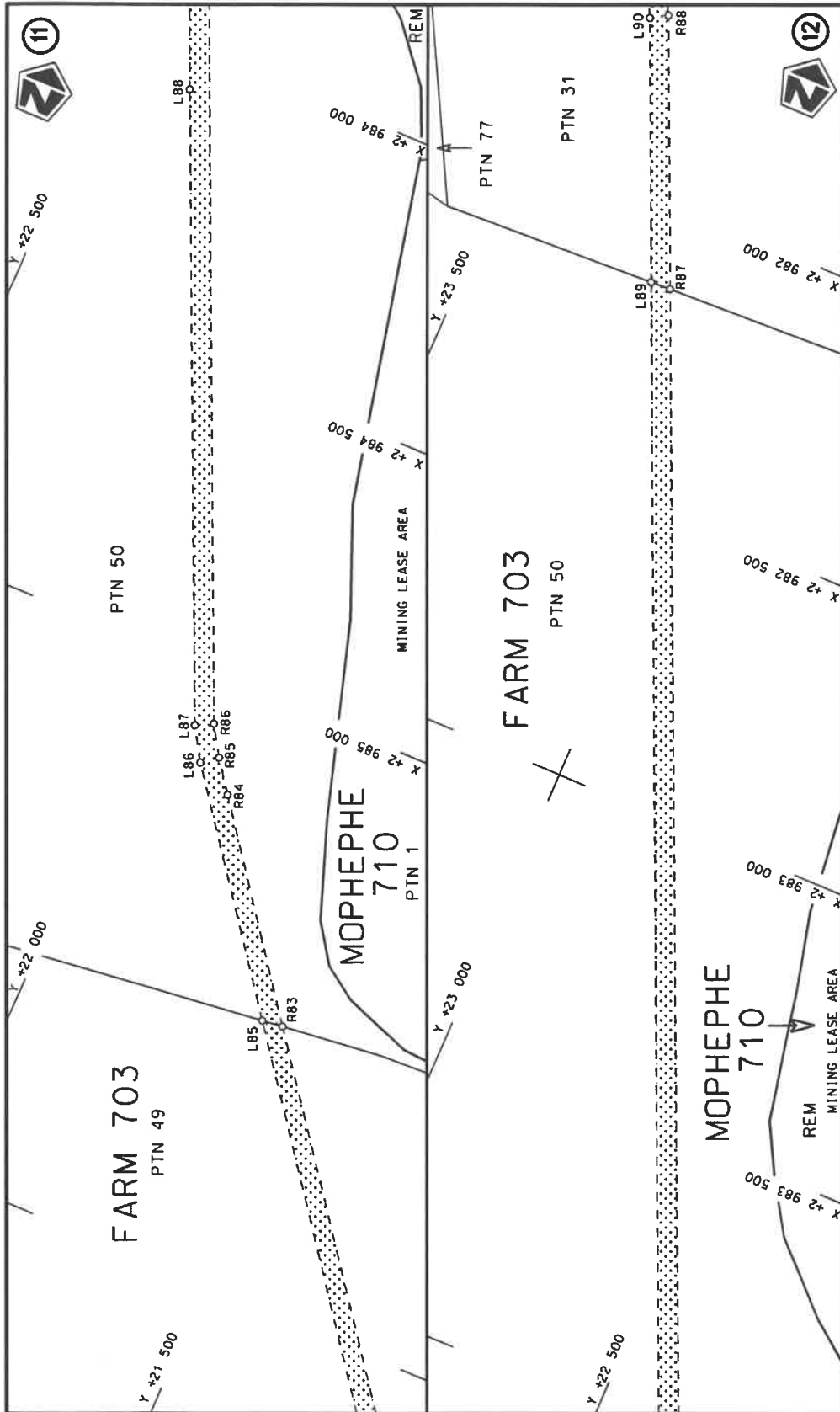
<p>Die Suid Afrikaanse Nasionale Padagentskap MSB Bpk The South African National Roads Agency SOC Ltd</p>	<p>Die figuur getoon The figure shown</p>	 <p>stel die padreserwe voor van 'n gedeelte represents the road reserve of a portion van Nasionale Roete R380 of National Route</p>	<p>Vel Sheet 3 of 30 Plan P1263/25</p>
		<p>2</p>	<p>2</p>

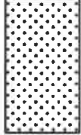


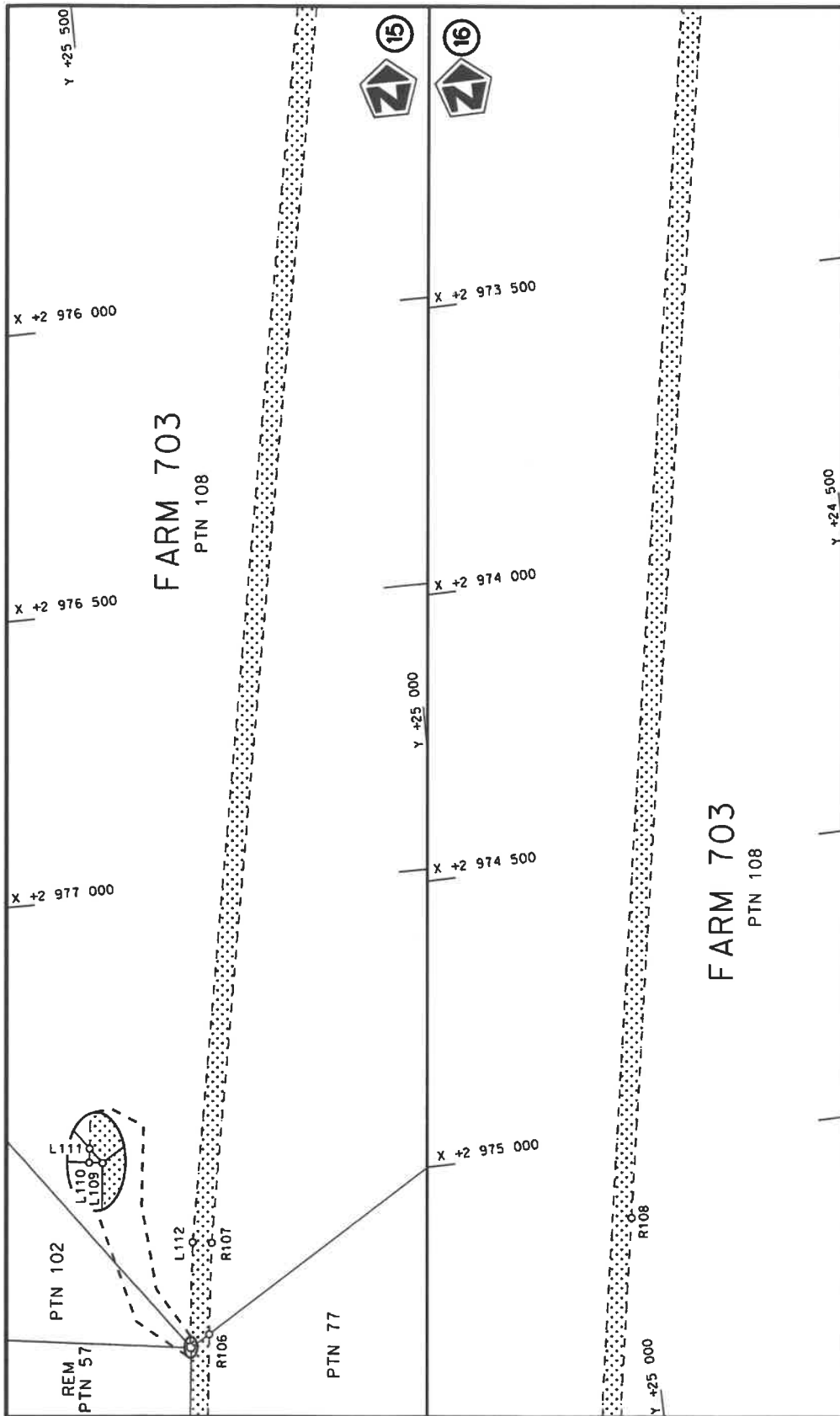
Die Suid Afrikaanse Nasionale Padagentskap MSB Bpk The South African National Roads Agency SOC Ltd	Die figuur getoon The figure shown	steldie padreserwe voor van 'n gedeelte represents the road reserve of a portion van Nasionale Roete R380 Seksie of National Route Section	Vel Sheet 4 of 30 Plan P1263/25
---	---------------------------------------	---	------------------------------------




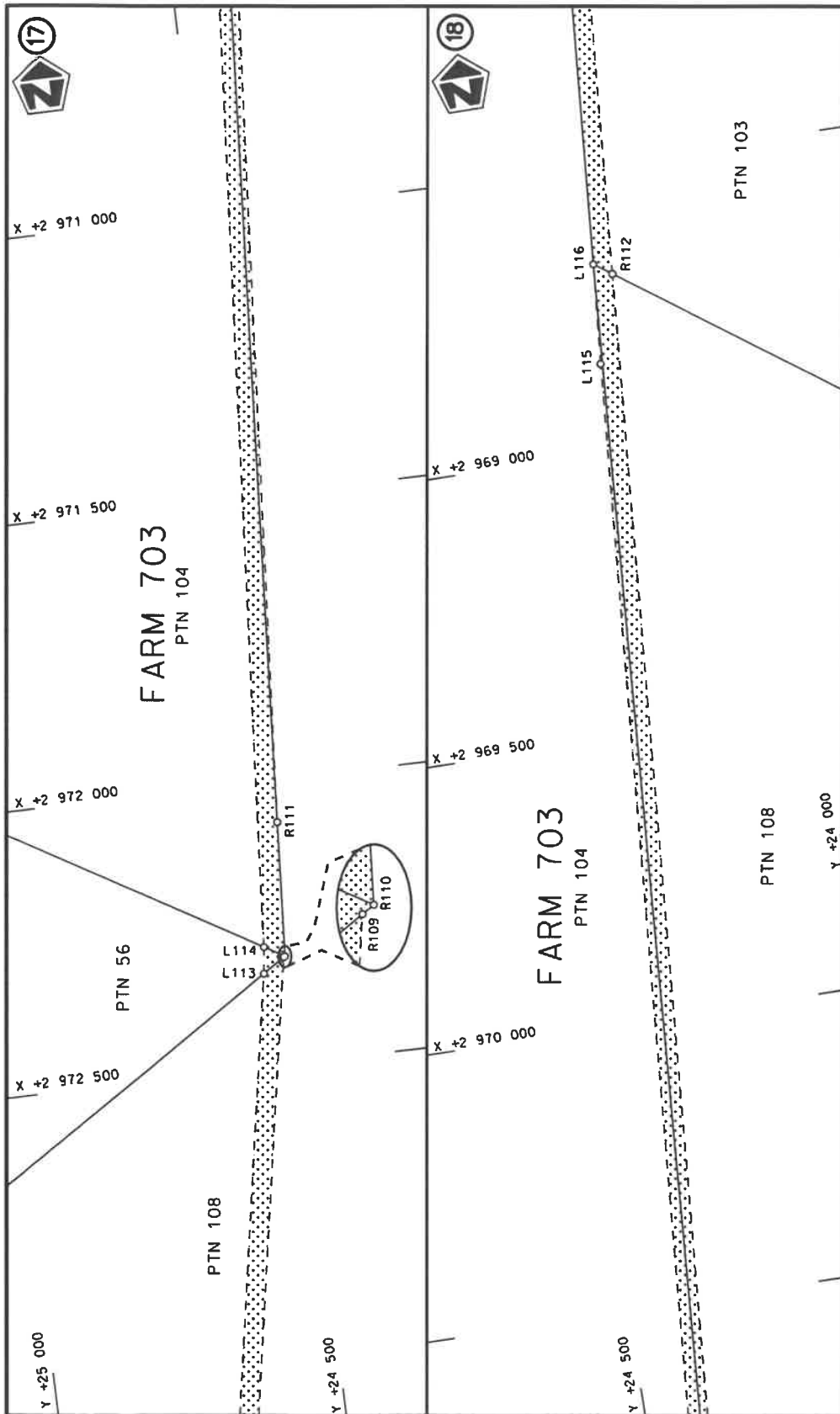
<p>Die Suid Afrikaanse Nasionale Padagentenskap MSB Bpk The South African National Roads Agency SOC Ltd</p>	<p>Die figuur getoon The figure shown</p> 	<p>steldie padreserwe voor van 'n gedeelte represents the road reserve of a portion van Nasionale Roete R380 Sektie of National Route R380 Section</p> <p style="text-align: right;">2</p>	<p>Vel Sheet 5 of 30</p> <p>Plan P1263/25</p>
---	---	--	---

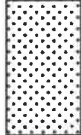


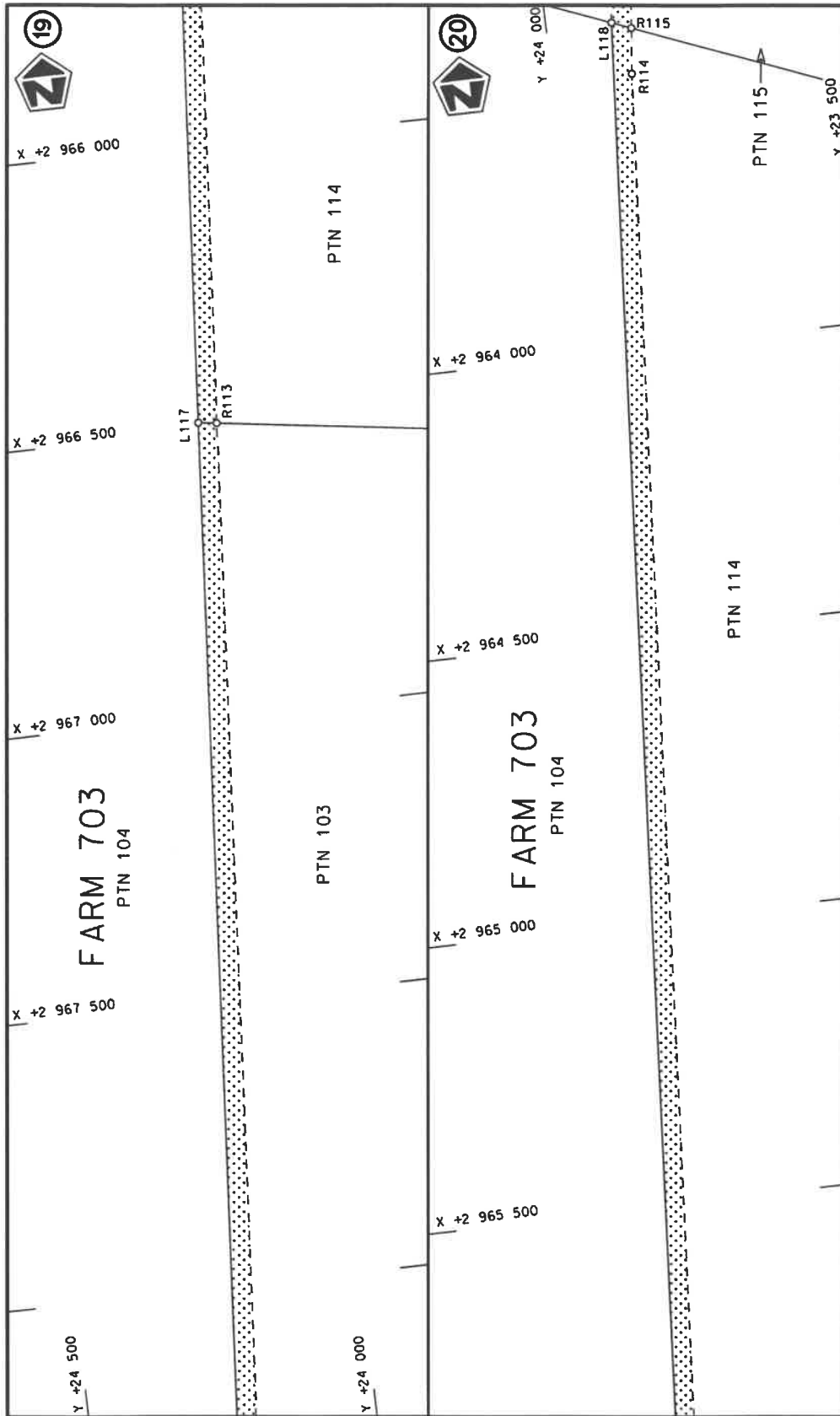
Die Suid Afrikaanse Nasionale Padagentskap MSB Bpk The South African National Roads Agency SOC Ltd	Die figuur getoon The figure shown	 steldie padreserwe voor van 'n gedeelte represents the road reserve of a portion van Nasionale Roete R380 of National Route Section	Vel Sheet 6 of 30 Plan P1263/25
---	---------------------------------------	--	------------------------------------




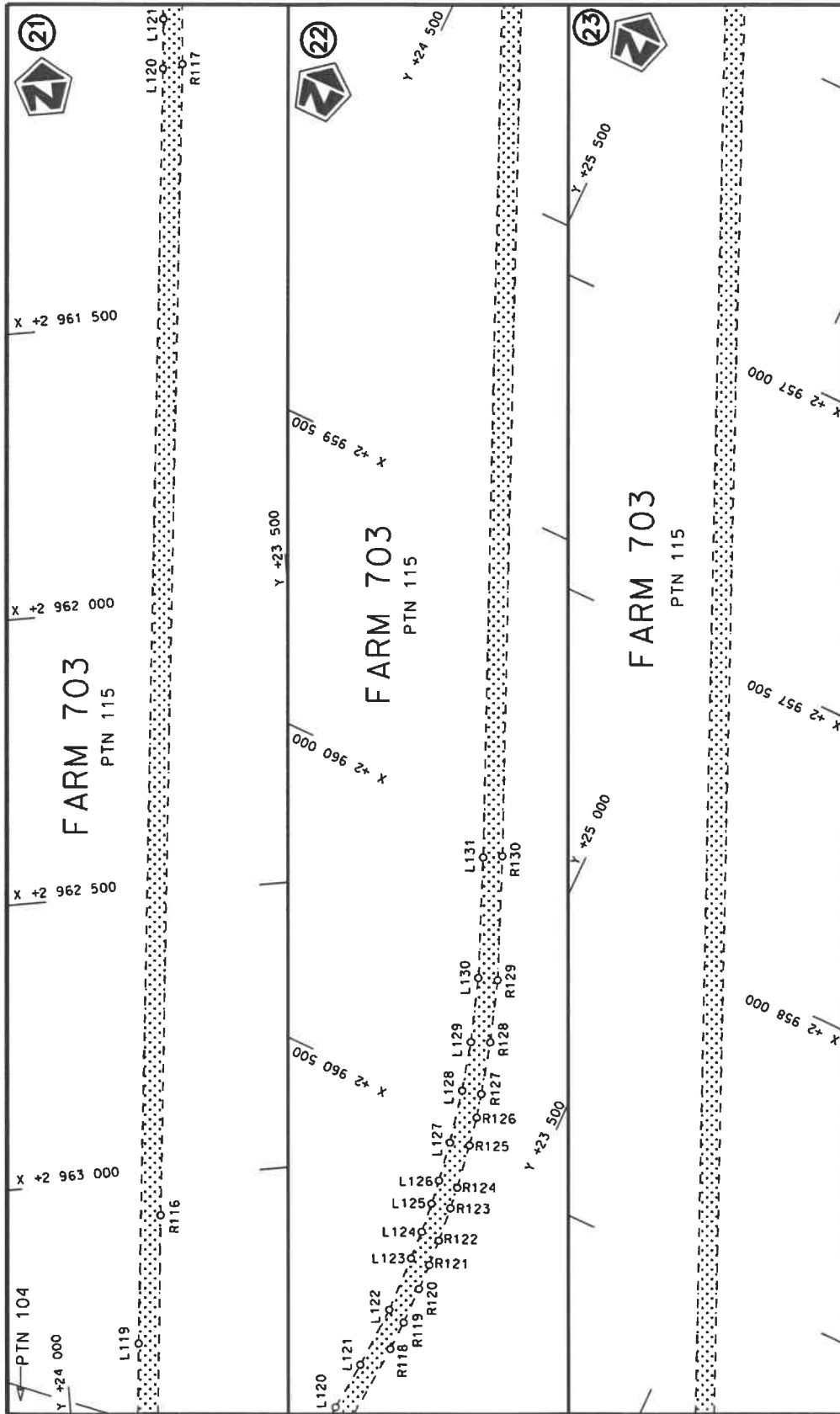
<p>Die Suid Afrikaanse Nasionale Padagentskap MSB Bpk The South African National Roads Agency SOC Ltd</p>	<p>Die figuur getoon The figure shown</p> 	<p>steldie padreserwe voor van 'n gedeelte represents the road reserve of a portion van Nasionale Roete R380 of National Route</p> <p>2</p>	<p>Vel Sheet 8 of 30 Plan P1263/25</p>
---	---	---	--



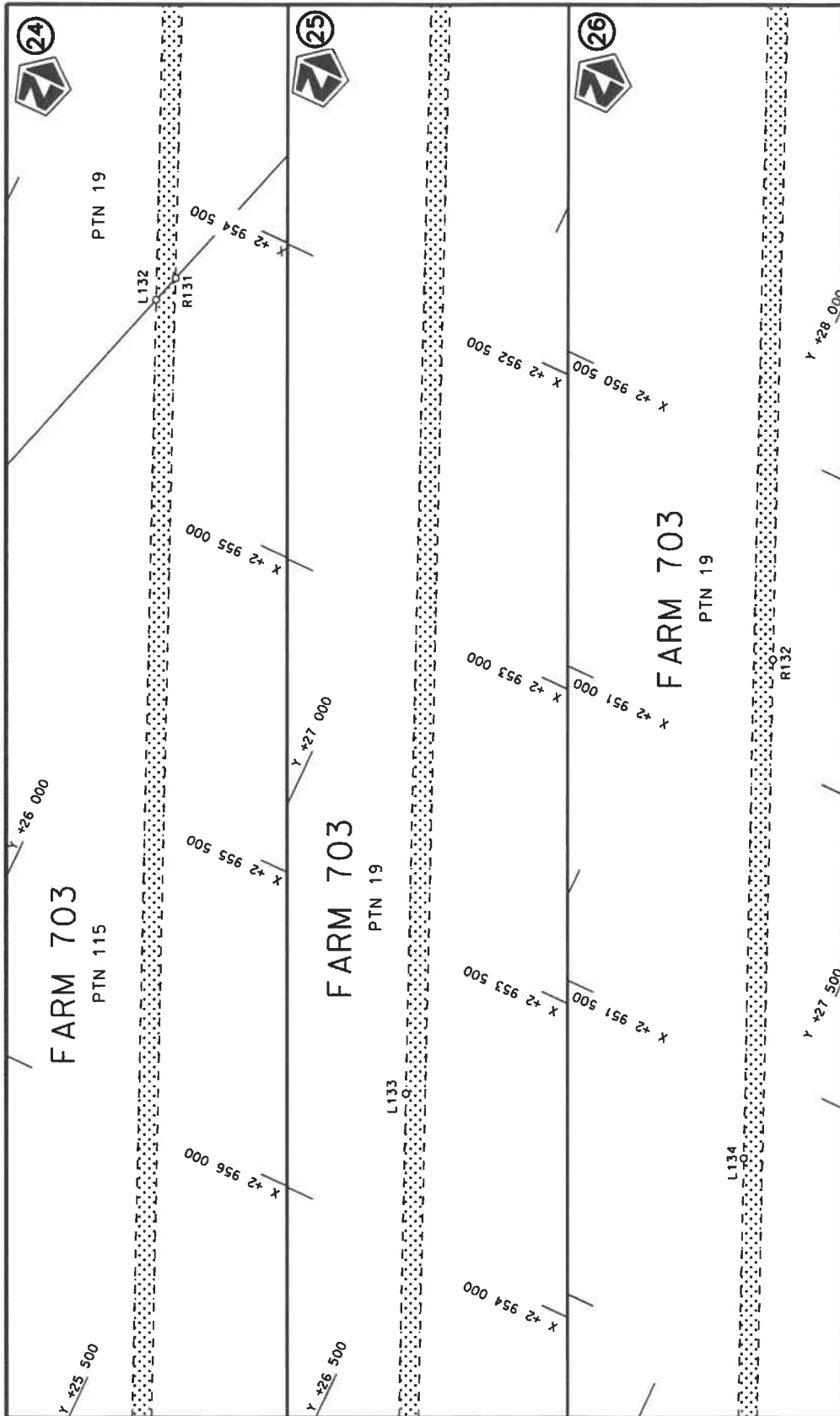
Die Suid Afrikaanse Nasionale Padagentskap MSB Bpk The South African National Roads Agency SOC Ltd	Die figuur getoon The figure shown		steldie podreserwe voor van 'n gedeelte represents the road reserve of a portion van Nasionale Roete R380 of National Route Section	Vel Sheet 9	van of 30
				Plan P1263/25	2

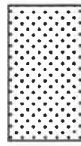


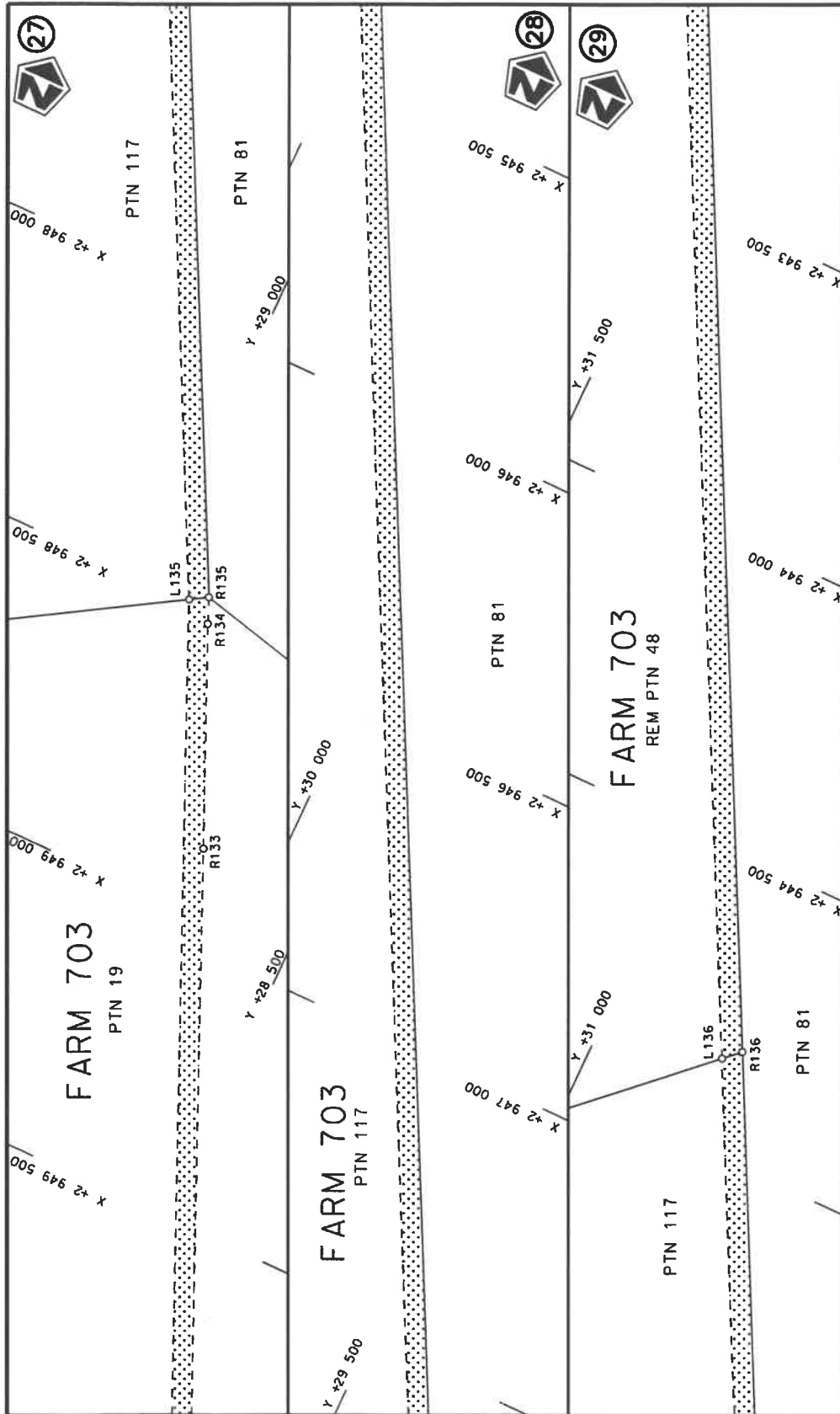
Die Suid Afrikaanse Nasionale Padagentskap MSB Bpk The South African National Roads Agency SOC Ltd	Die figuur getoon The figure shown		steldie padreserwe voor van 'n gedeelte represents the road reserve of a portion van Nasionale Roete R380 of National Route Sektie Section	Vel Sheet 10 of 30 Plan P1263/25
---	---------------------------------------	---	---	--

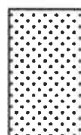


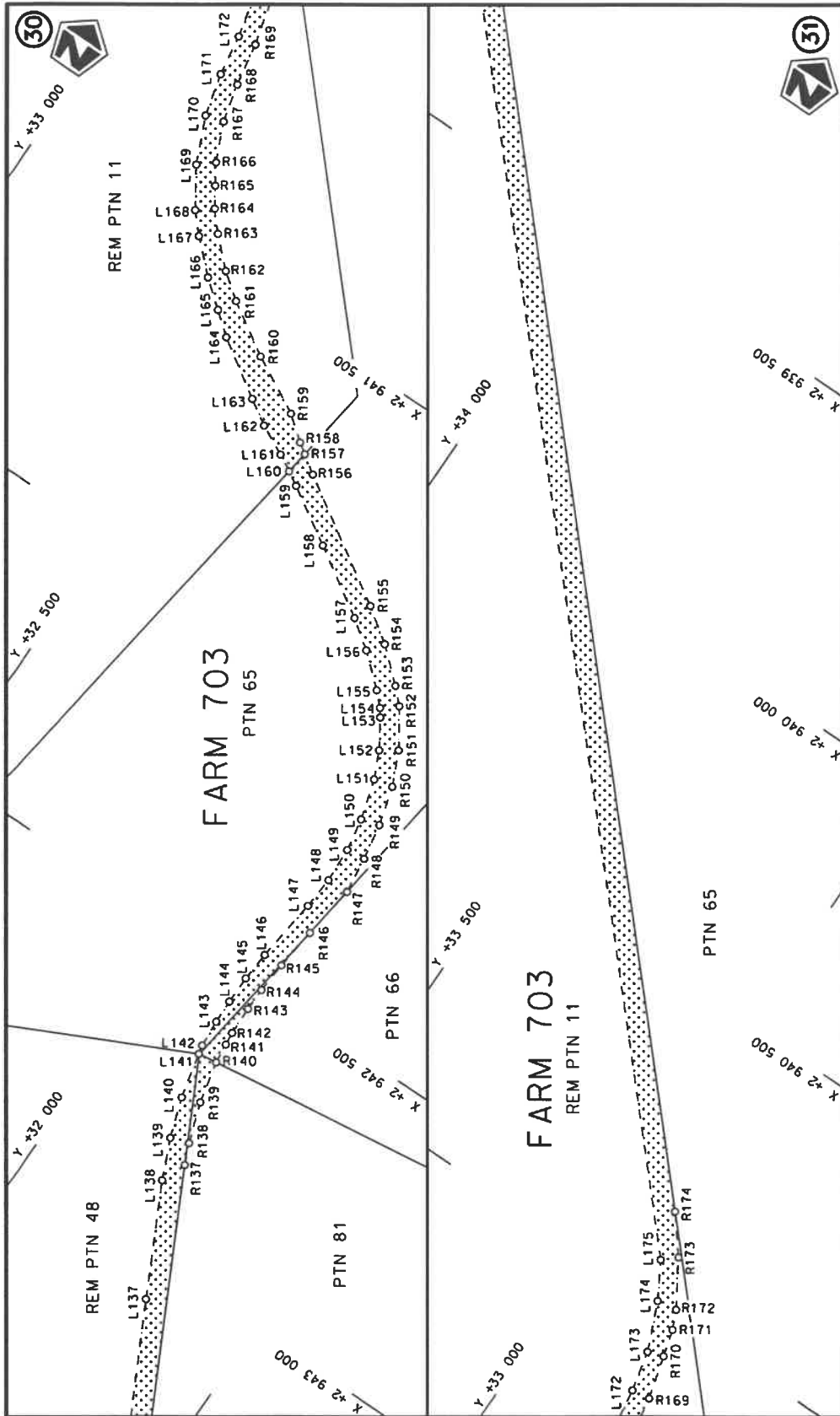
Die Suid-Afrikaanse Nasionale Padogenskap MSB Bpk The South African National Roads Agency SOC Ltd	Die figuur getoon The figure shown	steldie padreserwe voor van 'n gedeelte represents the road reserve of a portion van Nasionale Roete R380 of National Route Section	Vel Sheet 11 of 30
			Plan P1263/25

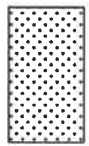


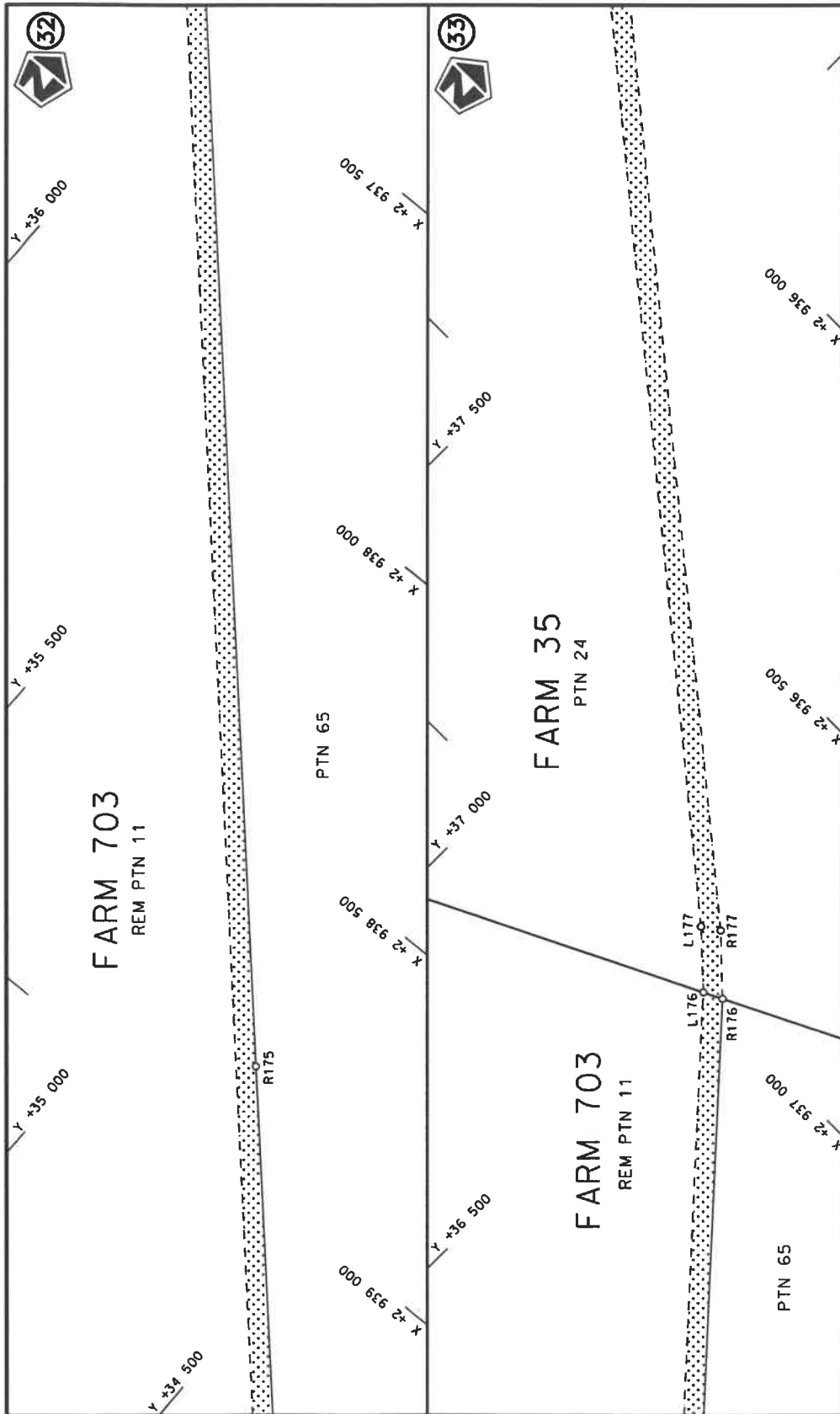
<p>Die Suid Afrikaanse Nasionale Padagentskap MSB Bpk The South African National Roads Agency SOC Ltd</p>	<p>Die figuur getoon The figure shown</p> 	<p>steldie podreserwe voor van 'n gedeelte represents the road reserve of a portion van Nasionale Roete R380 Sektie 2 of National Route of National Route</p>	<p>Vel Sheet 12 of 30 Plan P1263/25</p>
---	---	---	---

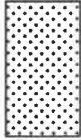


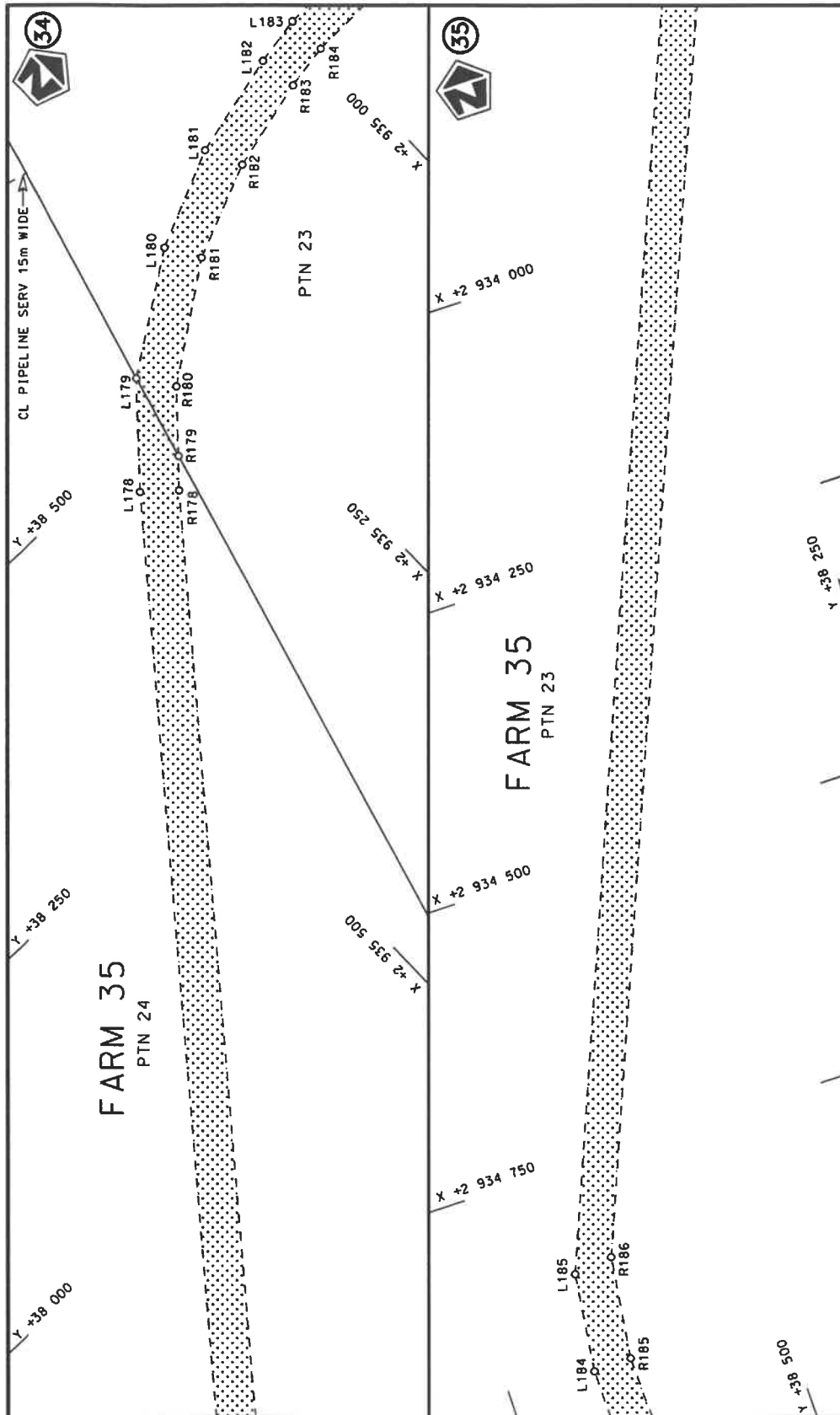
Die Suid Afrikaanse Nasionale Padagentstap MSB Bpk The South African National Roads Agency SOC Ltd	Die figuur getoon The figure shown		steldie padreserwe voor van 'n gedeelte represents the road reserve of a portion van Nasionale Roete R380 of National Route R380 Section	Vel Sheet 13 of 30 Plan P1263/25
---	---------------------------------------	---	---	-------------------------------------




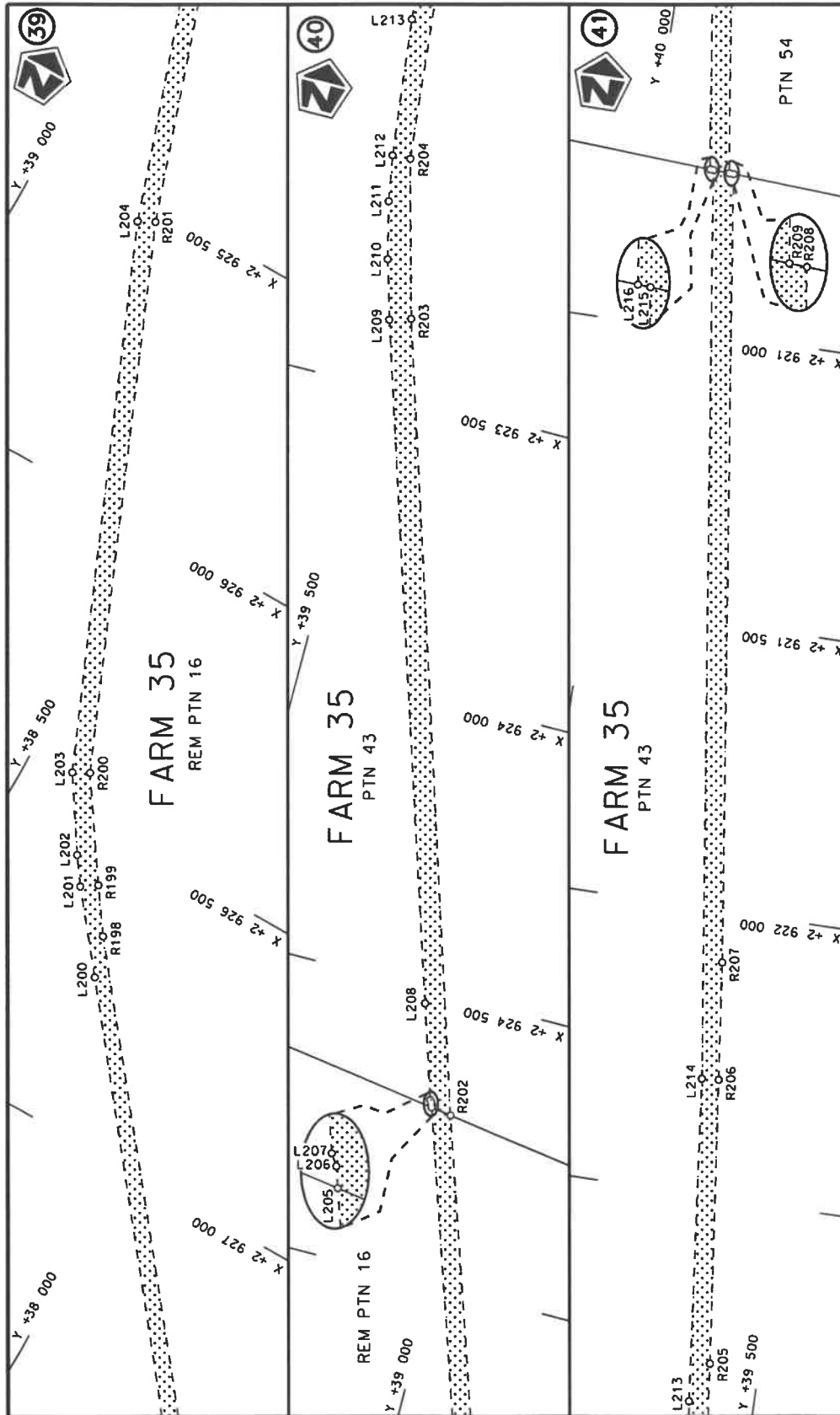
<p>Die Suid Afrikaanse Nasionale Padagentskap MSB Bpk The South African National Roads Agency SOC Ltd</p>	<p>Die figuur getoon The figure shown</p>		<p>staldie padreserwe voor 'n gedeelte represents the road reserve of a portion van Nasionale Roete R380 Seksie of National Route</p>	<p>Vel Sheet 14 of 30 Plan P1263/25</p>
			<p>2</p>	



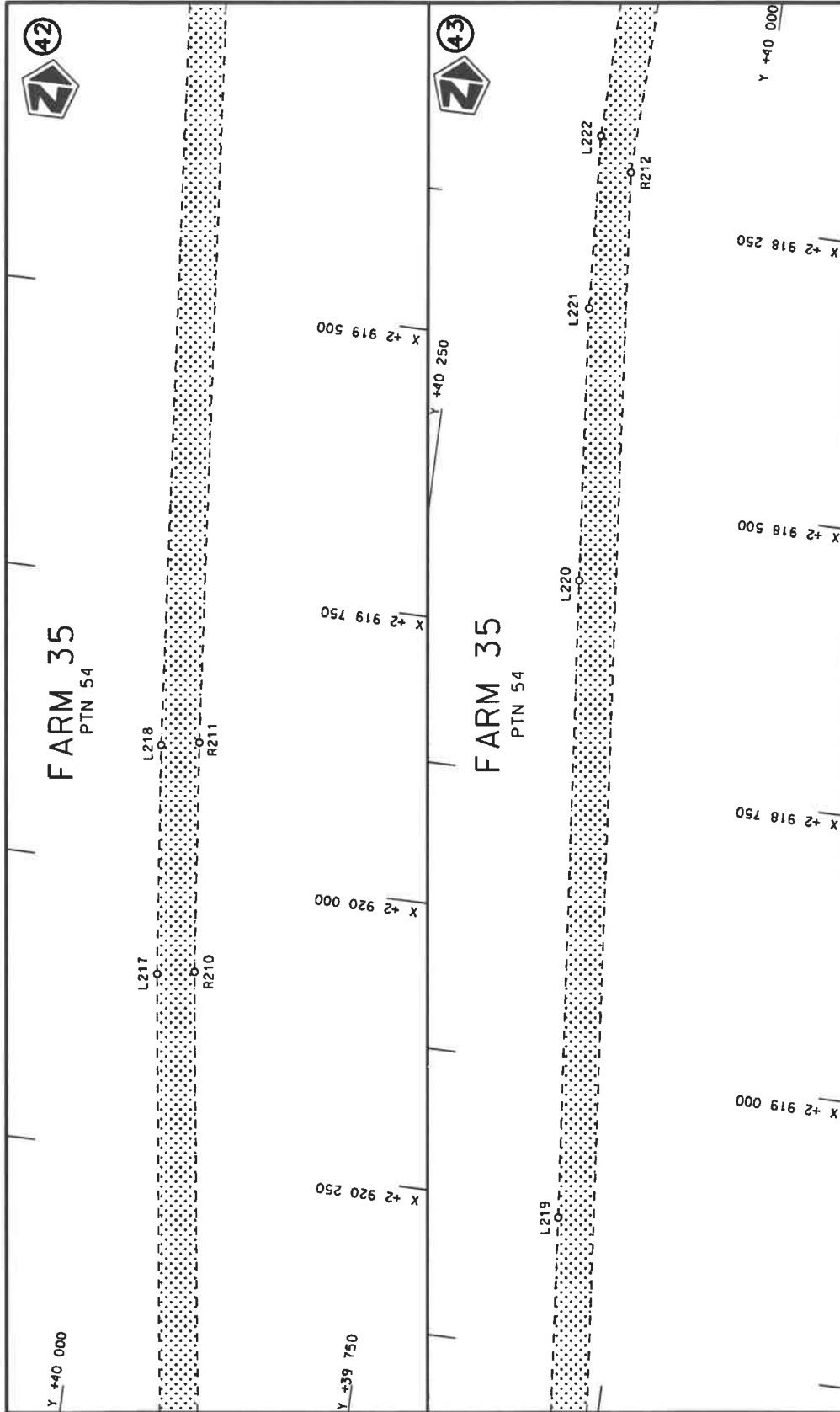
<p>Die Suid Afrikaanse Nasionale Padagentskap MSB Bpk The South African National Roads Agency SOC Ltd</p>	<p>Die figuur getoon The figure shown</p>	 <p>stel die padreserwe voor van 'n gedeelte represents the road reserve of a portion van Nasionale Roete R380 of National Route</p>	<p>Vel van 30 Sheet 15 of Plan P1263/25</p>
---	---	---	---

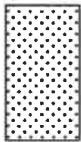


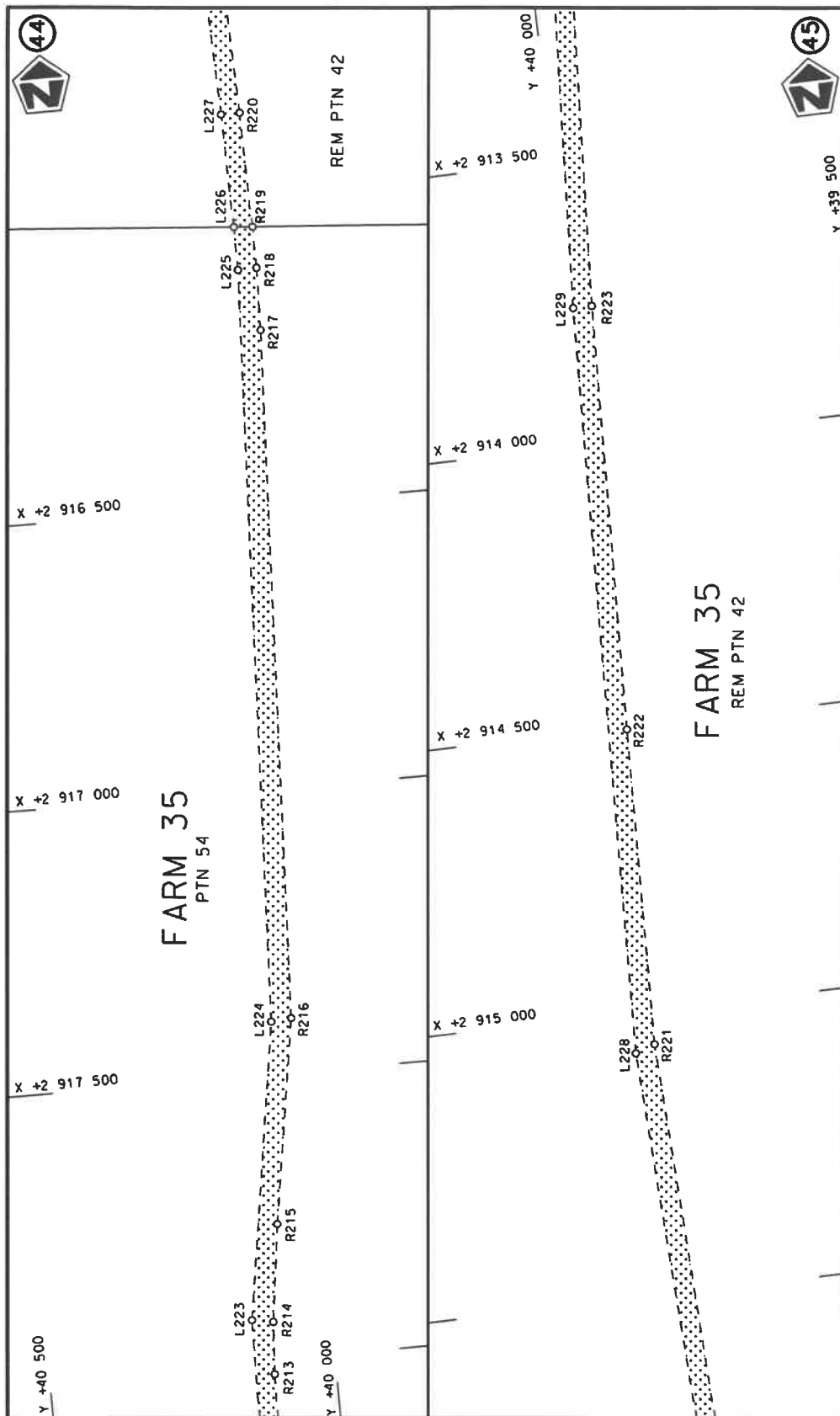
<p>Die Suid Afrikaanse Nasionale Padagentskap MSB Bpk The South African National Roads Agency SOC Ltd</p>	<p>Die figuur getoon The figure shown</p>		<p>stelt die padreserve voor van 'n gedeelte represents the road reserve of a portion van Nasionale Roete R380 of National Route</p>	<p>Vel Sheet 16 of 30 Plan P1263/25</p>
---	---	---	--	---




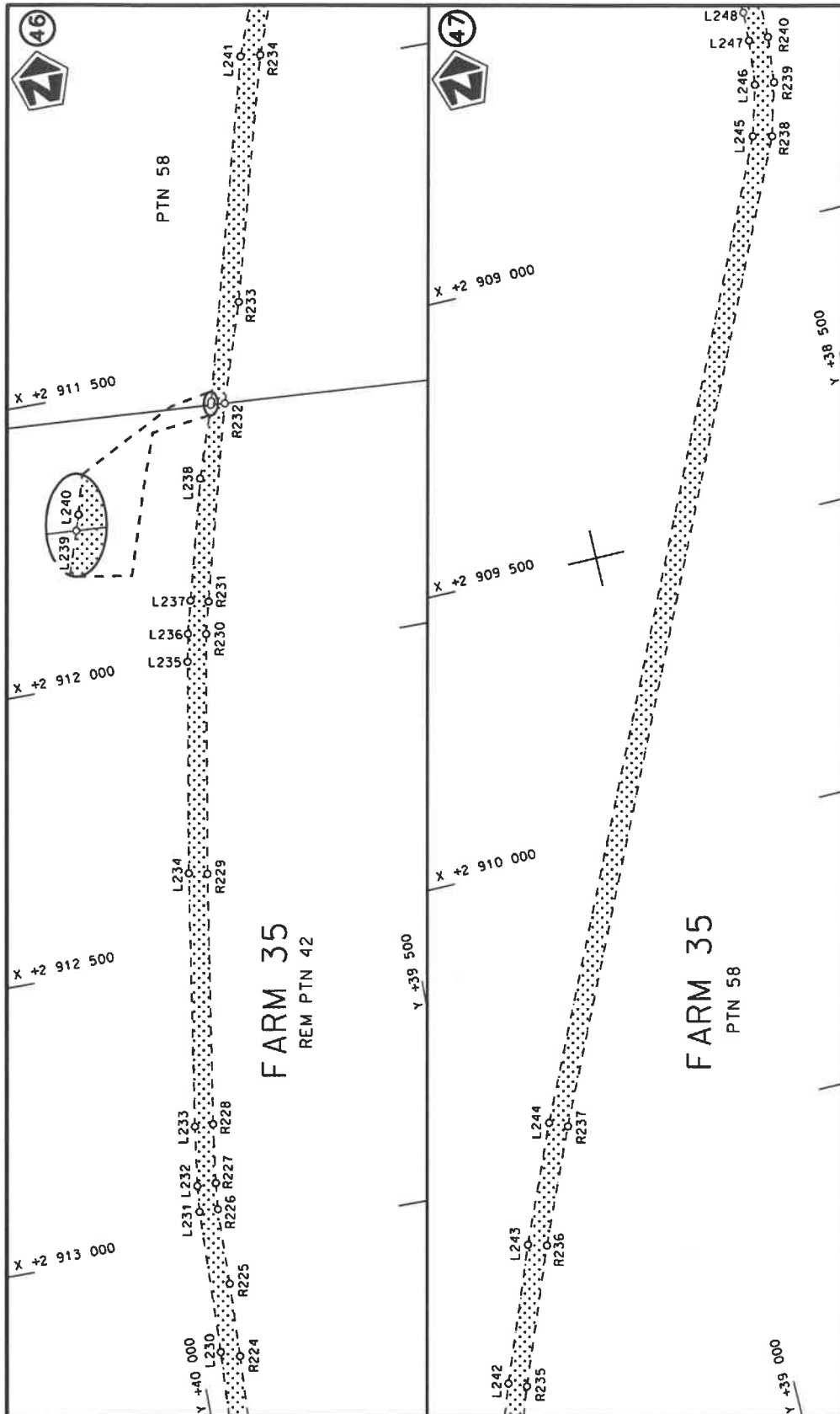
Die Suid Afrikaanse Nasionale Padagentskap MSB Bpk The South African National Roads Agency SOC Ltd	Die figuur getoon The figure shown	steldie padreserwe voor van 'n gedeelte represents the road reserve of o portion van Nasionale Roete R380 Sektie of National Route Section	Vel Sheet 18 of 30 Plan P1263/25
---	---------------------------------------	---	--




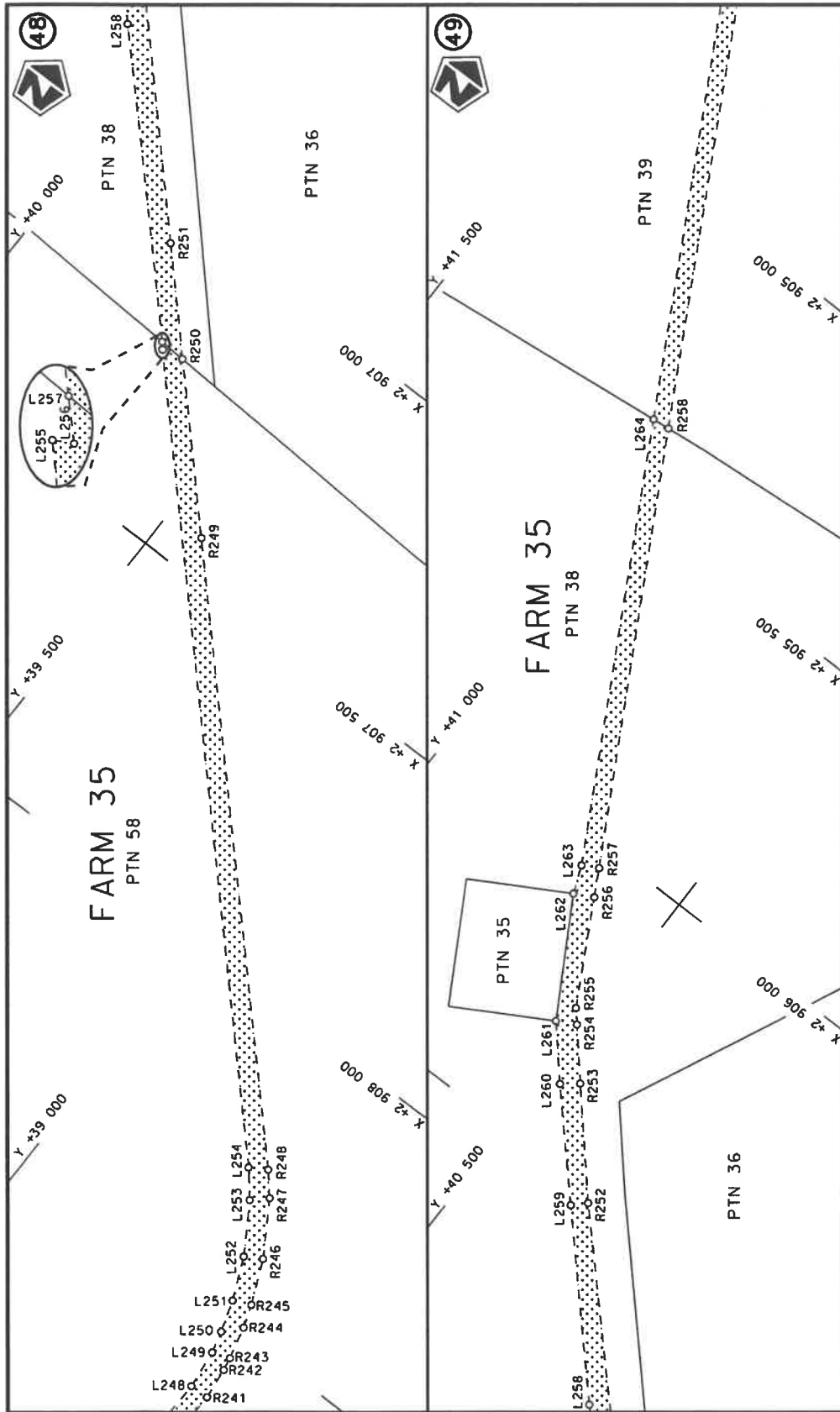
Die Suid Afrikaanse Nasionale Padogentskap WSB Bpk The South African National Roads Agency SOC Ltd	Die figuur getoon The figure shown		steldie padreserve voor van 'n gedeelte represents the road reserve of a portion van Nasionale Roete R380 of National Route Section	Vel Sheet 19 of 30 Plan P1263/25
---	---------------------------------------	---	--	-------------------------------------

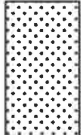


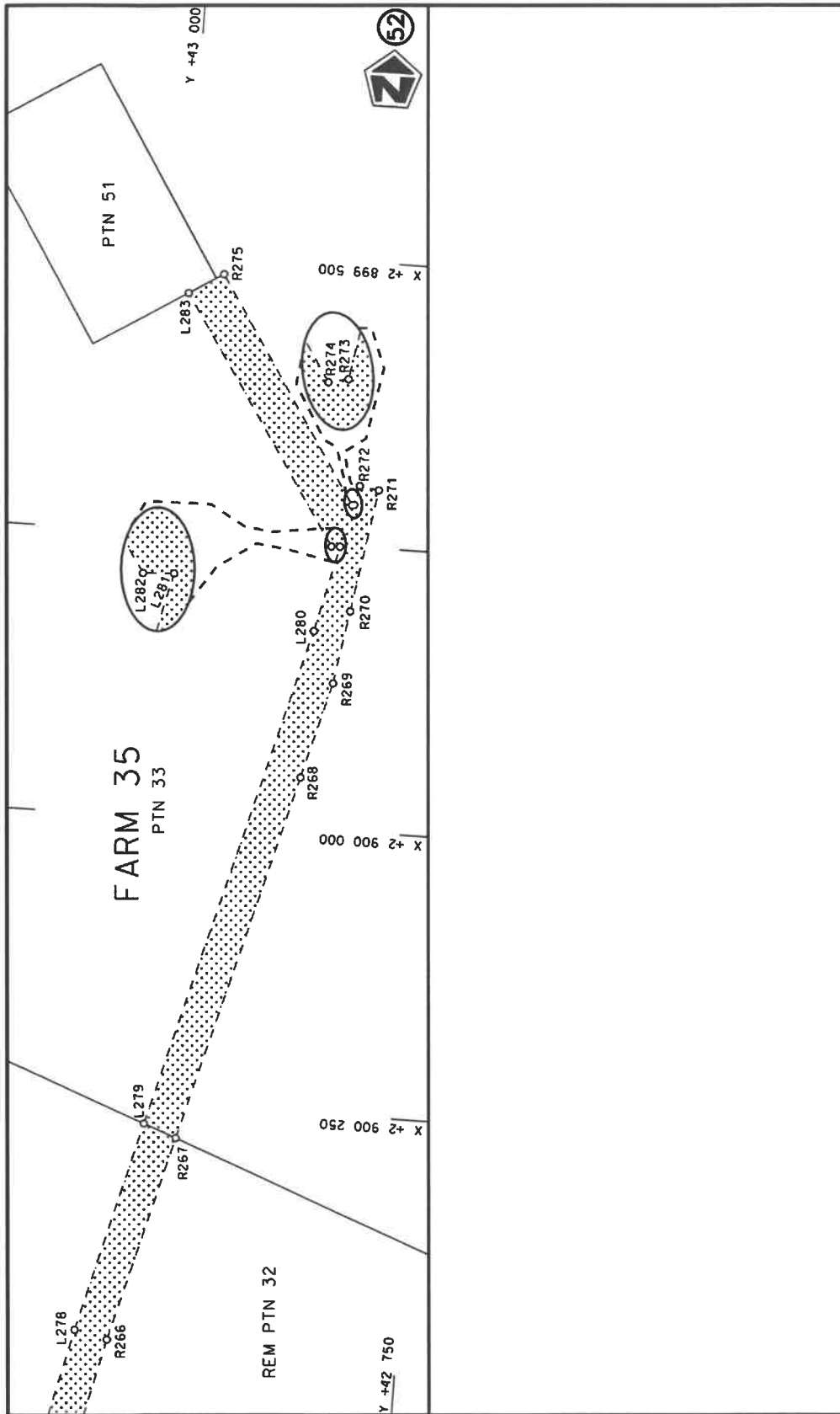
<p>Die Suid-Afrikaanse Nasionale Padagentskap MSB Bpk The South African National Roads Agency SOC Ltd</p>	<p>Die figuur getoon The figure shown</p> 	<p>stelt die padreserwe voor van 'n gedeelte represents the road reserve of a portion van Nasionale Roete R380 Seksie 2 of National Route of National Route</p>	<p>Vel Sheet 20 of 30 Plan P1263/25</p>
---	---	---	---




Die Suid-Afrikaanse Nasionale Padagentskap MSB Bpk The South African National Roads Agency SOC Ltd	Die figuur getoon The figure shown		stel die podreserwe voor van 'n gedeelte represents the road reserve of a portion van Nasionale Roete R380 of National Route Section	Vel Sheet 21 of 30
				Plan P1263/25



Die Suid Afrikaanse Nasionale Padagentskap MSB Bpk The South African National Roads Agency SOC Ltd	Die figuur getoon The figure shown		stel die padreserwe voor van 'n gedeelte represents the road reserve of a portion van Nasionale Roete R380 of National Route Section	Vel Sheet 22 of 30
				Plan P1263/25



Die Suid-Afrikaanse Nasionale Padagentskap MSB Bpk The South African National Roads Agency SOC Ltd	Die figuur getoon The figure shown	 steldie padreserwe voor van 'n gedeelte represents the road reserve of a portion van Nasionale Roete R380 Sektie of National Route of National Route Section	Vel van Sheet 24 of 30 Plan P1263/25
---	---------------------------------------	---	--

PADRESERWE KOÖRDINATE / ROAD RESERVE CO-ORDINATES							
LINKERKANT/LEFT HAND SIDE				REGTERKANT/RIGHT HAND SIDE			
	Y	X	WG23 °		Y	X	
L1	14 875.20	3 004 858.76		R1	14 858.60	3 004 829.77	
L2	15 101.58	3 004 728.05		R2	15 083.38	3 004 700.06	
L3	15 151.87	3 004 696.27		R3	15 132.41	3 004 668.73	
L4	15 193.65	3 004 665.22		R4	15 171.55	3 004 640.06	
L5	15 261.97	3 004 605.78		R5	15 233.32	3 004 586.20	
L6	15 297.81	3 004 566.79		R6	15 271.66	3 004 545.68	
L7	15 329.09	3 004 527.72		R7	15 301.35	3 004 508.88	
L8	15 355.70	3 004 490.59		R8	15 327.76	3 004 472.34	
L9	15 381.91	3 004 449.22		R9	15 352.65	3 004 432.98	
L10	15 405.09	3 004 407.37		R10	15 373.29	3 004 395.51	
L11	15 425.51	3 004 362.59		R11	15 393.39	3 004 352.16	
L12	15 442.64	3 004 317.53		R12	15 409.21	3 004 311.46	
L13	15 456.18	3 004 274.77		R13	15 424.40	3 004 264.83	
L14	15 467.20	3 004 234.97		R14	15 434.51	3 004 226.86	
L15	15 475.93	3 004 188.48		R15	15 443.44	3 004 178.23	
L16	15 483.09	3 004 132.01		R16	15 449.52	3 004 129.62	
L17	15 486.07	3 004 076.57		R17	15 452.33	3 004 079.81	
L18	15 485.17	3 004 027.63		R18	15 451.97	3 004 032.56	
L19	15 480.54	3 003 971.47		R19	15 447.88	3 003 977.32	
L20	15 472.15	3 003 917.36		R20	15 439.39	3 003 924.06	
L21	15 457.60	3 003 857.51		R21	15 425.80	3 003 867.32	
L22	15 440.10	3 003 804.28		R22	15 409.57	3 003 814.65	
L23	15 414.32	3 003 740.50		R23	15 384.08	3 003 752.99	
L24	15 389.72	3 003 688.97		R24	15 359.38	3 003 703.94	
L25	15 370.26	3 003 655.79		R25	15 203.57	3 003 441.49	
L26	15 300.52	3 003 525.62		R26	15 000.60	3 003 096.47	
L27	15 259.24	3 003 469.14		R27	14 795.48	3 002 749.18	
L28	15 239.52	3 003 436.18		R28	14 783.71	3 002 731.01	
L29	14 822.84	3 002 730.89		R29	14 771.12	3 002 714.32	
L30	14 739.80	3 002 593.43		R30	14 710.26	3 002 607.40	
L31	14 709.52	3 002 529.09		R31	14 680.87	3 002 544.98	
L32	14 695.68	3 002 497.43		R32	14 663.26	3 002 501.85	
L33	14 671.45	3 002 412.19		R33	14 639.49	3 002 417.35	
L34	14 664.62	3 002 357.25		R34	14 632.11	3 002 359.47	
L35	14 658.64	3 002 300.67		R35	14 625.97	3 002 302.86	
L36	14 659.57	3 002 206.95		R36	14 627.44	3 002 195.15	
L37	14 669.25	3 002 158.85		R37	14 882.61	3 001 081.65	
L38	14 916.86	3 001 078.82		R38	15 134.03	2 999 984.51	
L39	14 997.73	3 000 737.00		R39	15 145.75	2 999 926.00	
L40	15 166.94	2 999 994.51		R40	15 156.36	2 999 852.43	
L41	15 179.43	2 999 933.12		R41	15 164.69	2 999 764.42	
L42	15 190.28	2 999 858.90		R42	15 162.47	2 999 690.94	
L43	15 198.74	2 999 766.43		R43	15 159.26	2 999 630.84	
L44	15 196.36	2 999 687.74		R44	15 152.44	2 999 566.18	
L45	15 192.75	2 999 623.96		R45	14 958.05	2 998 350.15	
L46	15 186.43	2 999 563.88		R46	14 284.47	2 994 136.55	
L47	14 993.92	2 998 358.98		R47	14 276.63	2 994 058.79	
L48	14 318.97	2 994 134.67		R48	14 274.91	2 993 980.92	
L49	14 310.97	2 994 050.62		R49	14 277.39	2 993 902.57	
L50	14 307.94	2 993 980.61		R50	14 309.84	2 993 779.40	
L51	14 313.70	2 993 907.96		R51	14 384.30	2 993 655.45	

Vel Sheet	25	Van of	30	P1263/25
-----------	----	--------	----	----------

PADRESERWE KOÖRDINATE / ROAD RESERVE CO-ORDINATES						
LINKERKANT/LEFT HAND SIDE				REGTERKANT/RIGHT HAND SIDE		
	Y	X	WG23 °		Y	X
L52	14 345.04	2 993	790.97	R52	14 450.93	2 993 575.72
L53	14 380.04	2 993	729.59	R53	15 247.03	2 992 714.38
L54	14 412.98	2 993	672.53	R54	16 367.38	2 991 506.09
L55	14 473.95	2 993	599.78	R55	16 446.61	2 991 428.30
L56	14 666.17	2 993	390.83	R56	16 479.93	2 991 395.58
L57	15 252.89	2 992	757.39	R57	16 567.04	2 991 320.48
L58	15 943.54	2 992	011.73	R58	17 791.94	2 990 387.83
L59	16 393.46	2 991	528.02	R59	18 288.81	2 990 009.50
L60	16 494.94	2 991	428.02	R60	18 359.35	2 989 955.81
L61	16 502.36	2 991	420.71	R61	18 412.15	2 989 902.56
L62	16 587.08	2 991	348.34	R62	18 463.01	2 989 848.59
L63	16 824.04	2 991	167.37	R63	18 524.07	2 989 733.50
L64	17 758.17	2 990	456.04	R64	18 581.86	2 989 492.00
L65	18 379.75	2 989	982.70	R65	18 607.55	2 989 435.36
L66	18 435.77	2 989	932.09	R66	18 637.73	2 989 379.83
L67	18 486.51	2 989	863.43	R67	18 670.04	2 989 335.80
L68	18 557.02	2 989	752.54	R68	18 706.20	2 989 297.44
L69	18 614.05	2 989	502.77	R69	18 766.73	2 989 245.58
L70	18 669.53	2 989	391.34	R70	18 802.53	2 989 222.95
L71	18 732.21	2 989	319.88	R71	18 935.65	2 989 148.72
L72	18 743.25	2 989	307.90	R72	19 760.83	2 988 696.19
L73	18 784.04	2 989	274.67	R73	19 899.67	2 988 616.26
L74	18 951.61	2 989	178.14	R74	19 956.46	2 988 564.82
L75	19 842.12	2 988	690.61	R75	19 996.52	2 988 525.15
L76	19 920.06	2 988	643.10	R76	20 031.27	2 988 473.02
L77	19 978.03	2 988	592.91	R77	20 058.37	2 988 415.85
L78	20 025.41	2 988	547.16	R78	20 623.17	2 986 852.54
L79	20 060.17	2 988	490.82	R79	20 675.72	2 986 721.42
L80	20 088.94	2 988	429.97	R80	20 684.61	2 986 700.50
L81	20 208.18	2 988	104.21	R81	20 697.40	2 986 681.03
L82	20 655.57	2 986	862.21	R82	20 735.52	2 986 625.41
L83	20 714.29	2 986	710.22	R83	21 554.30	2 985 525.94
L84	20 760.08	2 986	649.52	R84	21 803.26	2 985 187.92
L85	21 590.81	2 985	530.19	R85	21 842.74	2 985 134.06
L86	21 869.45	2 985	154.74	R86	21 874.18	2 985 082.44
L87	21 903.94	2 985	098.26	R87	23 156.96	2 982 139.26
L88	22 351.27	2 984	074.54	R88	23 349.05	2 981 698.53
L89	23 192.19	2 982	140.83	R89	23 401.63	2 981 603.60
L90	23 377.30	2 981	715.15	R90	23 436.99	2 981 552.75
L91	23 425.58	2 981	619.58	R91	23 477.08	2 981 509.99
L92	23 463.03	2 981	570.31	R92	23 515.19	2 981 478.00
L93	23 497.07	2 981	535.25	R93	23 562.97	2 981 438.05
L94	23 530.92	2 981	504.53	R94	24 148.34	2 981 055.73
L95	23 584.67	2 981	463.40	R95	24 601.09	2 980 760.04
L96	24 116.84	2 981	115.96	R96	25 513.62	2 980 162.89
L97	24 437.25	2 980	906.77	R97	25 601.71	2 980 069.14
L98	25 534.73	2 980	187.32	R98	25 652.32	2 979 990.69
L99	25 612.25	2 980	111.14	R99	25 674.64	2 979 919.18
L100	25 680.63	2 980	007.52	R100	25 690.91	2 979 827.19
L101	25 704.31	2 979	931.39	R101	25 688.14	2 979 733.06
L102	25 718.92	2 979	874.40	R102	25 635.39	2 979 243.86

Vel 26 Van 30
Sheet of

P1263/25

PADRESERWE KOÖRDINATE / ROAD RESERVE CO-ORDINATES						
LINKERKANT/LEFT HAND SIDE				REGTERKANT/RIGHT HAND SIDE		
	Y	X	WG23 °		Y	X
L103	25 724.06	2 979	833.34	R103	25 583.21	2 978 773.15
L104	25 725.66	2 979	792.13	R104	25 552.66	2 978 568.56
L105	25 596.82	2 978	613.86	R105	25 553.30	2 978 509.00
L106	25 604.47	2 978	577.15	R106	25 474.84	2 977 780.49
L107	25 600.98	2 978	536.49	R107	25 455.24	2 977 619.90
L108	25 585.26	2 978	508.14	R108	25 012.80	2 975 130.51
L109	25 507.99	2 977	801.48	R109	24 510.66	2 972 311.08
L110	25 510.19	2 977	801.18	R110	24 508.56	2 972 309.72
L111	25 509.92	2 977	798.84	R111	24 493.34	2 972 073.87
L112	25 488.40	2 977	615.93	R112	24 243.09	2 968 692.84
L113	24 548.92	2 972	335.80	R113	24 079.99	2 966 489.28
L114	24 543.22	2 972	289.28	R114	23 860.16	2 963 519.23
L115	24 288.26	2 968	845.77	R115	23 852.29	2 963 439.10
L116	24 273.74	2 968	670.86	R116	23 815.59	2 963 065.73
L117	24 111.86	2 966	484.86	R117	23 608.31	2 961 051.38
L118	23 885.41	2 963	425.82	R118	23 598.52	2 960 922.34
L119	23 872.46	2 963	287.71	R119	23 597.28	2 960 870.28
L120	23 642.61	2 961	056.02	R120	23 598.13	2 960 805.25
L121	23 634.86	2 960	969.76	R121	23 599.75	2 960 759.40
L122	23 629.49	2 960	860.23	R122	23 602.96	2 960 713.39
L123	23 633.28	2 960	761.93	R123	23 608.80	2 960 653.09
L124	23 636.28	2 960	711.70	R124	23 613.55	2 960 615.15
L125	23 641.60	2 960	659.69	R125	23 625.75	2 960 538.73
L126	23 647.25	2 960	617.32	R126	23 634.96	2 960 489.05
L127	23 658.58	2 960	548.51	R127	23 645.22	2 960 447.84
L128	23 677.99	2 960	456.77	R128	23 669.53	2 960 358.81
L129	23 700.44	2 960	372.86	R129	23 704.11	2 960 254.18
L130	23 736.20	2 960	264.76	R130	23 788.91	2 960 052.72
L131	23 818.44	2 960	068.63	R131	26 175.82	2 954 638.19
L132	26 190.70	2 954	686.99	R132	27 849.79	2 950 836.91
L133	26 598.38	2 953	762.14	R133	28 711.03	2 948 884.69
L134	27 526.50	2 951	652.23	R134	28 871.64	2 948 523.43
L135	28 919.17	2 948	498.64	R135	28 889.61	2 948 480.63
L136	30 782.97	2 944	839.98	R136	30 755.62	2 944 814.56
L137	31 687.28	2 943	064.81	R137	31 764.62	2 942 832.87
L138	31 782.03	2 942	876.54	R138	31 780.22	2 942 796.98
L139	31 812.49	2 942	806.77	R139	31 804.61	2 942 725.81
L140	31 836.17	2 942	737.02	R140	31 821.82	2 942 652.85
L141	31 855.17	2 942	657.83	R141	31 825.42	2 942 616.86
L142	31 858.64	2 942	642.16	R142	31 827.75	2 942 593.95
L143	31 861.94	2 942	593.23	R143	31 829.34	2 942 544.35
L144	31 862.92	2 942	550.95	R144	31 828.93	2 942 503.77
L145	31 862.49	2 942	501.48	R145	31 824.96	2 942 448.56
L146	31 859.11	2 942	449.09	R146	31 816.11	2 942 373.15
L147	31 845.62	2 942	335.58	R147	31 803.26	2 942 276.92
L148	31 841.38	2 942	277.94	R148	31 811.28	2 942 211.15
L149	31 844.25	2 942	215.39	R149	31 822.88	2 942 147.45
L150	31 854.55	2 942	157.23	R150	31 842.19	2 942 079.25
L151	31 875.53	2 942	086.54	R151	31 869.06	2 942 020.23
L152	31 897.38	2 942	039.65	R152	31 911.95	2 941 955.58
L153	31 928.34	2 941	990.87	R153	31 937.72	2 941 930.22

Vel Sheet	27	Van of	30	P1263/25
--------------	----	-----------	----	----------

PADRESERWE KOÖRDINATE / ROAD RESERVE CO-ORDINATES							
LINKERKANT/LEFT HAND SIDE			REGTERKANT/RIGHT HAND SIDE				
	Y	X	WG23°	Y	X		
L154	31 938.07	2 941	977.19	R154	31 994.72	2 941	880.44
L155	31 960.45	2 941	955.03	R155	32 053.28	2 941	839.45
L156	32 014.88	2 941	907.44	R156	32 266.57	2 941	706.74
L157	32 063.96	2 941	872.49	R157	32 298.84	2 941	685.18
L158	32 181.74	2 941	799.22	R158	32 317.13	2 941	672.96
L159	32 279.49	2 941	739.51	R159	32 358.43	2 941	640.20
L160	32 304.53	2 941	725.57	R160	32 458.60	2 941	587.63
L161	32 332.75	2 941	709.86	R161	32 548.95	2 941	531.70
L162	32 385.05	2 941	683.85	R162	32 593.23	2 941	498.35
L163	32 428.35	2 941	657.03	R163	32 641.35	2 941	452.36
L164	32 526.72	2 941	593.48	R164	32 671.00	2 941	419.34
L165	32 565.89	2 941	562.14	R165	32 693.21	2 941	385.46
L166	32 612.58	2 941	524.97	R166	32 715.08	2 941	351.36
L167	32 666.59	2 941	474.27	R167	32 744.62	2 941	284.93
L168	32 697.56	2 941	440.47	R168	32 761.71	2 941	218.16
L169	32 741.20	2 941	373.71	R169	32 775.57	2 941	142.99
L170	32 776.78	2 941	293.80	R170	32 796.79	2 941	067.25
L171	32 795.92	2 941	219.54	R171	32 810.07	2 941	020.13
L172	32 807.41	2 941	147.73	R172	32 824.75	2 940	987.13
L173	32 824.10	2 941	076.67	R173	32 873.14	2 940	909.98
L174	32 860.05	2 940	992.96	R174	32 923.76	2 940	846.83
L175	32 896.68	2 940	930.10	R175	34 763.18	2 938	841.76
L176	36 504.00	2 936	994.19	R176	36 472.49	2 936	978.52
L177	36 589.39	2 936	914.40	R177	36 560.19	2 936	894.75
L178	38 466.22	2 935	381.77	R178	38 443.52	2 935	356.29
L179	38 540.20	2 935	315.44	R179	38 465.54	2 935	336.19
L180	38 605.92	2 935	217.96	R180	38 510.92	2 935	294.77
L181	38 643.15	2 935	133.53	R181	38 577.28	2 935	200.94
L182	38 664.72	2 935	043.13	R182	38 611.51	2 935	119.15
L183	38 671.85	2 935	000.61	R183	38 631.02	2 935	038.97
L184	38 672.71	2 934	927.80	R184	38 637.45	2 934	999.31
L185	38 661.63	2 934	841.38	R185	38 638.93	2 934	927.02
L186	37 865.08	2 932	889.96	R186	38 627.09	2 934	837.13
L187	37 299.74	2 931	509.07	R187	37 212.03	2 931	375.33
L188	37 246.83	2 931	365.05	R188	36 778.04	2 930	049.04
L189	37 165.94	2 931	124.54	R189	36 581.40	2 929	444.00
L190	36 886.14	2 930	272.42	R190	36 578.82	2 929	366.47
L191	36 613.57	2 929	433.73	R191	36 578.27	2 929	350.02
L192	36 616.92	2 929	356.78	R192	36 588.68	2 929	298.26
L193	36 617.66	2 929	339.82	R193	36 608.70	2 929	195.05
L194	36 617.10	2 929	324.21	R194	36 619.89	2 929	150.52
L195	36 647.21	2 929	203.82	R195	36 644.14	2 929	097.78
L196	36 658.41	2 929	159.94	R196	36 669.22	2 929	047.57
L197	36 674.57	2 929	109.75	R197	37 510.47	2 927	578.20
L198	37 537.07	2 927	593.17	R198	38 232.37	2 926	662.15
L199	37 648.67	2 927	449.31	R199	38 283.66	2 926	587.88
L200	38 209.53	2 926	731.78	R200	38 393.35	2 926	423.53
L201	38 310.34	2 926	605.56	R201	38 771.53	2 925	526.28
L202	38 342.53	2 926	560.12	R202	39 045.66	2 924	703.22
L203	38 421.18	2 926	438.11	R203	39 467.36	2 923	367.21
L204	38 798.87	2 925	540.58	R204	39 540.44	2 923	096.12

Vel Sheet	28	Van of	30	P1263/25
--------------	----	-----------	----	----------

PADRESERWE KOÖRDINATE / ROAD RESERVE CO-ORDINATES						
LINKERKANT/LEFT HAND SIDE			REGTERKANT/RIGHT HAND SIDE			
	Y	X	WG23°		Y	X
L205	39 081.27	2 924	697.97	R205	39 572.98	2 922 788.24
L206	39 083.88	2 924	690.18	R206	39 630.59	2 922 291.84
L207	39 086.79	2 924	685.94	R207	39 654.47	2 922 086.82
L208	39 138.62	2 924	523.77	R208	39 838.49	2 920 715.68
L209	39 504.13	2 923	378.63	R209	39 846.82	2 920 715.22
L210	39 534.00	2 923	276.75	R210	39 932.75	2 920 085.96
L211	39 558.22	2 923	178.04	R211	39 954.48	2 919 885.36
L212	39 572.14	2 923	098.25	R212	40 112.63	2 918 213.57
L213	39 600.35	2 922	859.19	R213	40 107.04	2 918 024.94
L214	39 660.27	2 922	294.58	R214	40 101.49	2 917 932.84
L215	39 874.76	2 920	713.67	R215	40 079.26	2 917 761.90
L216	39 881.20	2 920	713.32	R216	40 023.17	2 917 403.09
L217	39 965.21	2 920	091.92	R217	39 970.58	2 916 194.18
L218	39 987.42	2 919	891.81	R218	39 968.57	2 916 084.73
L219	40 056.93	2 919	132.81	R219	39 970.25	2 916 012.54
L220	40 110.78	2 918	574.65	R220	39 974.93	2 915 811.09
L221	40 133.24	2 918	336.40	R221	40 005.17	2 915 058.32
L222	40 142.65	2 918	184.91	R222	39 987.24	2 914 503.15
L223	40 138.29	2 917	926.32	R223	39 961.14	2 913 757.74
L224	40 058.21	2 917	406.35	R224	39 930.52	2 913 210.34
L225	40 001.60	2 916	085.66	R225	39 925.36	2 913 081.31
L226	40 003.17	2 916	010.07	R226	39 922.05	2 912 948.58
L227	40 007.31	2 915	811.55	R227	39 917.23	2 912 902.64
L228	40 039.19	2 915	070.23	R228	39 903.36	2 912 800.06
L229	39 993.93	2 913	757.59	R229	39 833.66	2 912 365.24
L230	39 962.36	2 913	196.90	R230	39 760.15	2 911 950.10
L231	39 954.52	2 912	947.35	R231	39 745.75	2 911 894.84
L232	39 949.99	2 912	901.87	R232	39 655.40	2 911 557.88
L233	39 935.42	2 912	798.61	R233	39 599.41	2 911 387.16
L234	39 865.54	2 912	358.40	R234	39 485.86	2 910 967.97
L235	39 801.02	2 911	992.36	R235	39 456.53	2 910 888.63
L236	39 791.54	2 911	944.28	R236	39 364.46	2 910 655.55
L237	39 776.46	2 911	887.47	R237	39 279.87	2 910 460.17
L238	39 721.49	2 911	679.79	R238	38 528.37	2 908 851.90
L239	39 680.25	2 911	556.25	R239	38 503.28	2 908 760.96
L240	39 678.13	2 911	549.90	R240	38 495.35	2 908 680.94
L241	39 519.87	2 910	964.27	R241	38 494.59	2 908 625.29
L242	39 487.17	2 910	876.07	R242	38 500.61	2 908 569.35
L243	39 396.81	2 910	646.58	R243	38 504.84	2 908 546.09
L244	39 310.45	2 910	446.53	R244	38 518.91	2 908 488.91
L245	38 561.12	2 908	844.01	R245	38 532.52	2 908 448.67
L246	38 536.67	2 908	757.18	R246	38 566.04	2 908 372.32
L247	38 529.09	2 908	679.42	R247	38 622.42	2 908 280.20
L248	38 528.09	2 908	626.49	R248	38 655.31	2 908 241.97
L249	38 535.65	2 908	557.09	R249	39 428.14	2 907 432.49
L250	38 545.54	2 908	518.30	R250	39 646.71	2 907 203.47
L251	38 563.22	2 908	462.76	R251	39 788.09	2 907 055.33
L252	38 595.15	2 908	389.30	R252	40 304.66	2 906 514.22
L253	38 647.97	2 908	304.23	R253	40 444.60	2 906 355.87
L254	38 684.70	2 908	259.86	R254	40 512.72	2 906 277.08
L255	39 684.92	2 907	212.13	R255	40 531.97	2 906 254.81

Vel
Sheet

29

Van
of

30

P1263/25

PADRESERWE KOÖRDINATE / ROAD RESERVE CO-ORDINATES					
LINKERKANT/LEFT HAND SIDE			REGTERKANT/RIGHT HAND SIDE		
	Y	X	WG23°	Y	X
L256	39 683.55	2 907 211.39		R256	40 625.98 2 906 080.70
L257	39 693.26	2 907 201.32		R257	40 650.73 2 906 034.87
L258	40 083.48	2 906 797.04		R258	41 028.24 2 905 348.22
L259	40 326.64	2 906 535.66		R259	42 360.23 2 902 901.79
L260	40 472.39	2 906 377.78		R260	42 388.88 2 902 867.20
L261	40 545.85	2 906 294.79		R261	42 991.44 2 902 141.01
L262	40 658.79	2 906 098.22		R262	43 202.80 2 901 886.29
L263	40 678.05	2 906 049.84		R263	43 246.88 2 901 797.57
L264	41 058.66	2 905 351.62		R264	43 268.07 2 901 704.40
L265	42 364.02	2 902 952.83		R265	43 267.24 2 901 609.37
L266	42 413.34	2 902 885.24		R266	43 002.29 2 900 460.48
L267	42 533.07	2 902 737.02		R267	42 955.09 2 900 280.08
L268	43 059.88	2 902 102.09		R268	42 868.12 2 899 955.58
L269	43 198.45	2 901 933.92		R269	42 845.68 2 899 871.03
L270	43 233.11	2 901 885.73		R270	42 835.35 2 899 806.80
L271	43 271.76	2 901 809.04		R271	42 817.83 2 899 699.24
L272	43 283.27	2 901 771.06		R272	42 834.64 2 899 696.51
L273	43 298.29	2 901 706.22		R273	42 838.28 2 899 713.43
L274	43 297.90	2 901 655.51		R274	42 840.22 2 899 713.86
L275	43 291.15	2 901 577.76		R275	42 966.25 2 899 519.30
L276	43 248.02	2 901 384.76			
L277	43 121.32	2 900 836.80			
L278	43 030.79	2 900 453.84			
L279	42 983.58	2 900 269.23			
L280	42 865.67	2 899 826.42			
L281	42 847.98	2 899 750.78			
L282	42 855.56	2 899 751.19			
L283	42 995.81	2 899 537.87			

Vel Sheet	30	Van of	30	P1263/25
--------------	----	-----------	----	----------

Printed by and obtainable from the Government Printer, Bosman Street, Private Bag X85, Pretoria, 0001
Contact Centre Tel: 012-748 6200. eMail: info.egazette@gpw.gov.za
Publications: Tel: (012) 748 6053, 748 6061, 748 6065