
GOVERNMENT NOTICES • GOEWERMENTSKENNISGEWINGS

DEPARTMENT OF TRANSPORT**NO. 7077****2 February 2026****THE SOUTH AFRICAN NATIONAL ROADS
AGENCY SOC LIMITED****Registration No: 1998/009584/30**

DECLARATION AMENDMENT OF NATIONAL ROAD R415 SECTION 1

AMENDMENT OF DECLARATION No. 2358 OF 2022.

By virtue of section 40(1)(b) of the South African National Roads Agency Limited and the National Roads Act 1998 (Act No. 7 of 1998), I hereby amend Declaration No. 2358 of 2022 by substituting paragraph G of the Schedule, with the accompanying sheets 1 to 23 of Plan No. P1261/25.

The R415 Section 1 starts at the intersection with National Road R56 Section 8 and from there follows the street known as West Street, at the time of declaration, in the town of Matatiele.

(National Road R415 Section 1: Matatiele – Qacha's Nek Border Post)



MINISTER OF TRANSPORT

DEPARTEMENT VAN VERVOER

NO. 7077

2 Februarie 2026

**DIE SUID-AFRIKAANSE NASIONALE
PADAGENTSKAP MSB BEPERK**

Registrasie No: 1998/009584/30

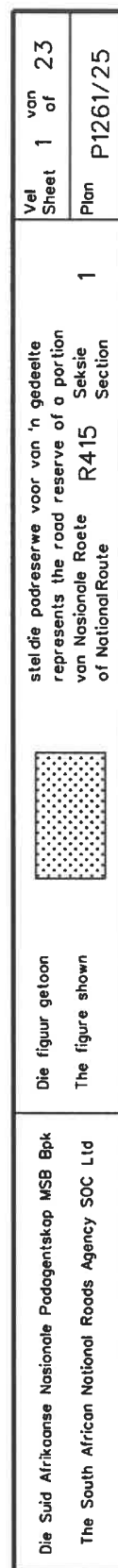
VERKLARING WYSIGING VAN NASIONALE PAD R415 SEKSIE 1

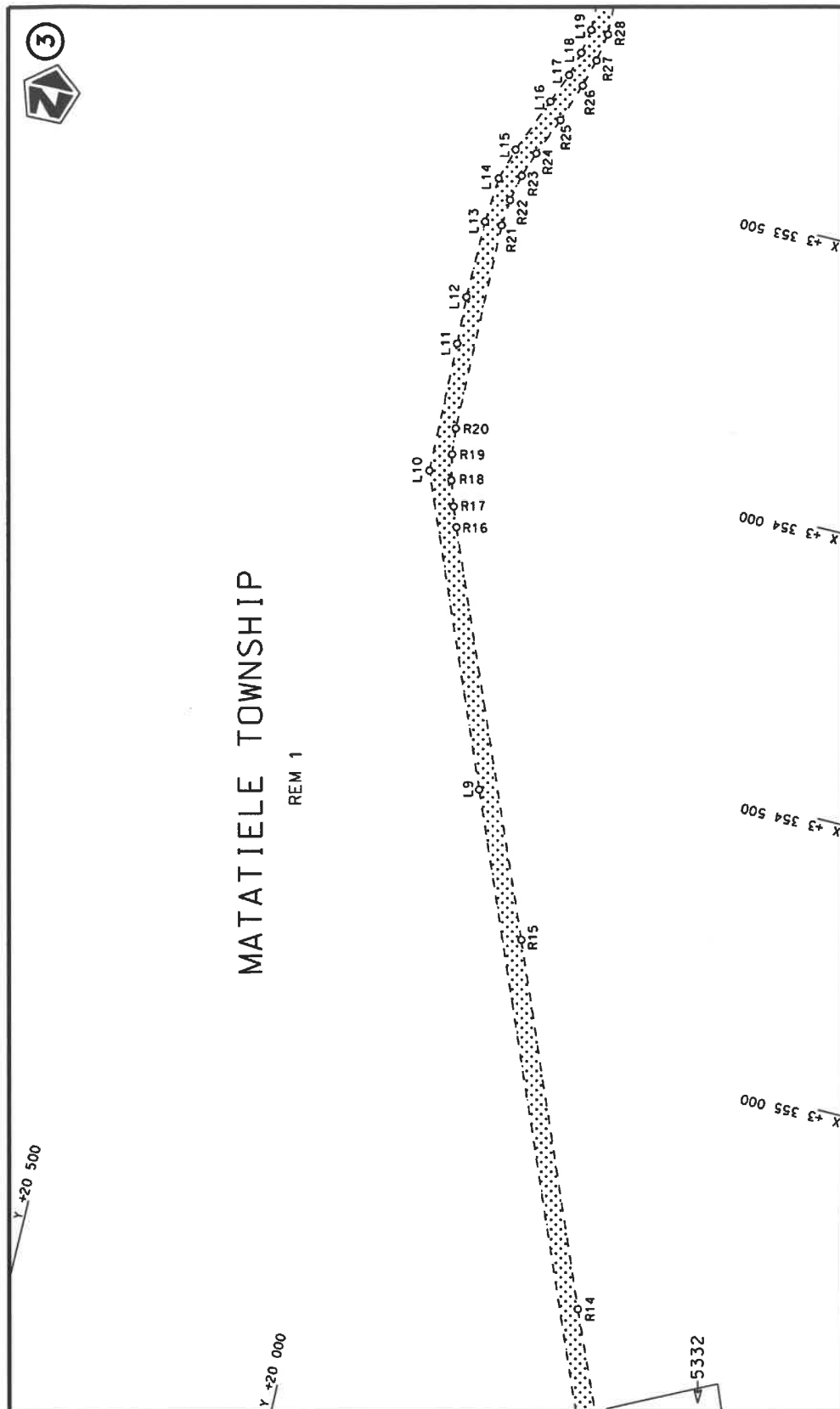
WYSIGING VAN VERKLARING No. 2358 VAN 2022.

Kragtens Artikel 40(1)(b) van die Suid-Afrikaanse Nasionale Padagentskap Beperk en Nasionale Paaie Wet 1998 (Wet No. 7 van 1998), wysig ek hiermee Verklaring No. 2358 van 2022 deur paragraaf G van die Skedule te vervang, met bygaande velle 1 tot 23 van Plan No. P1261/25.

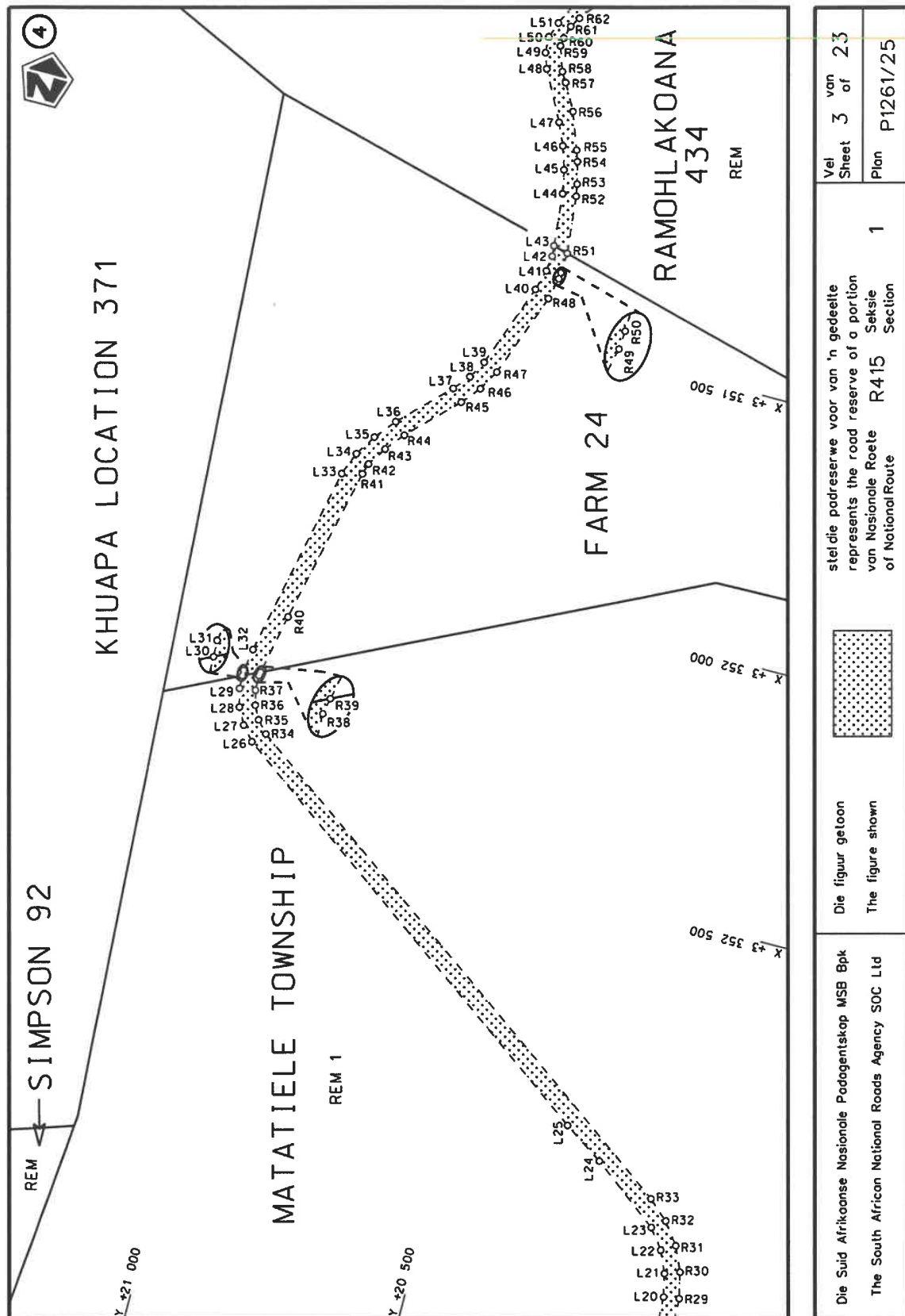
Die R415 Seksie 1 begin by die interseksie met Nasionale Pad R56 Seksie 8 en daarvandaan volg dit die straat bekend as Wesstraat, tydens datum van verklaring, in die dorp van Matatiele.

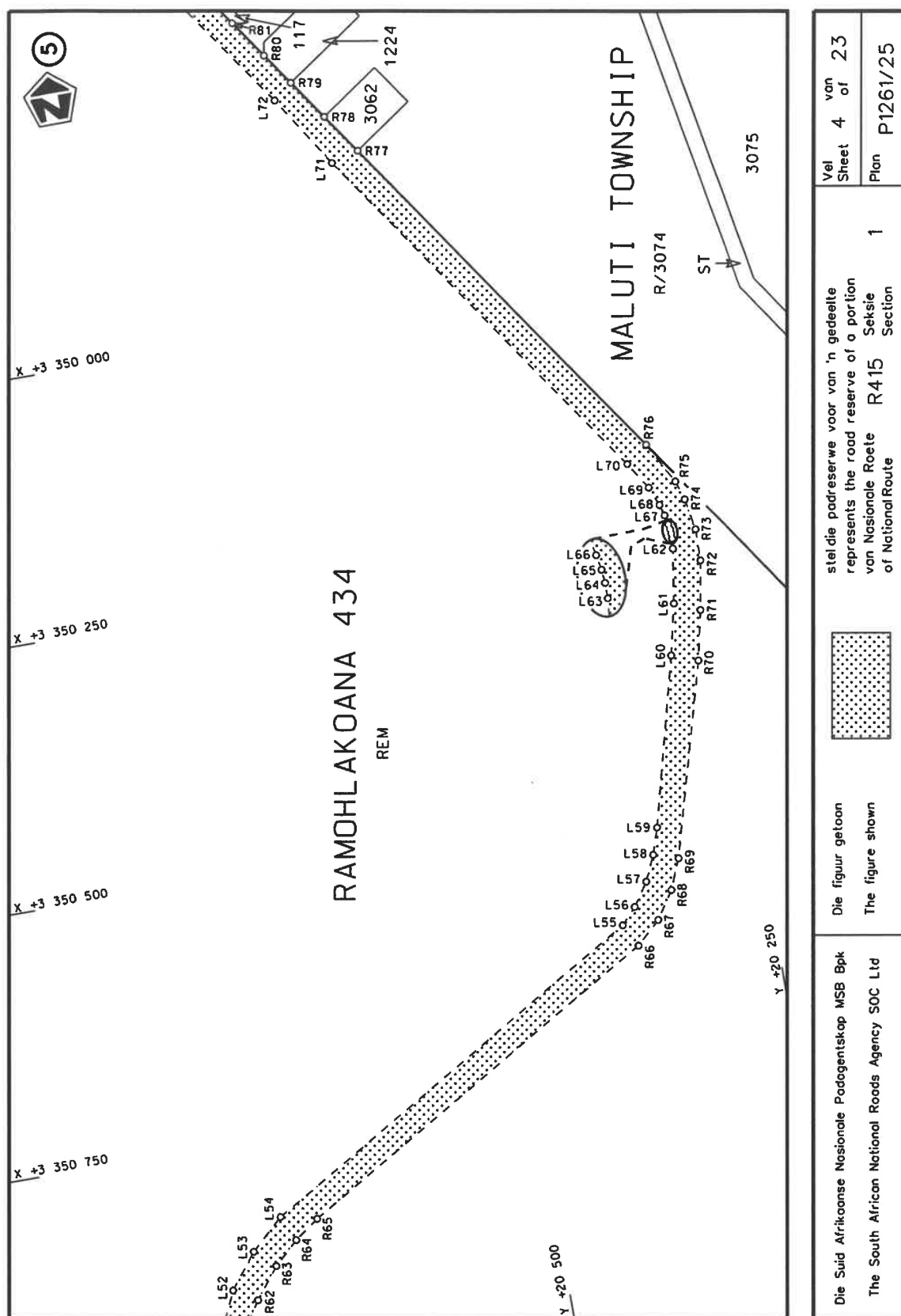
(Nasionale Pad R415 Seksie 1: Matatiele – Qacha's Nek Grenspos)**MINISTER VAN VERVOER**

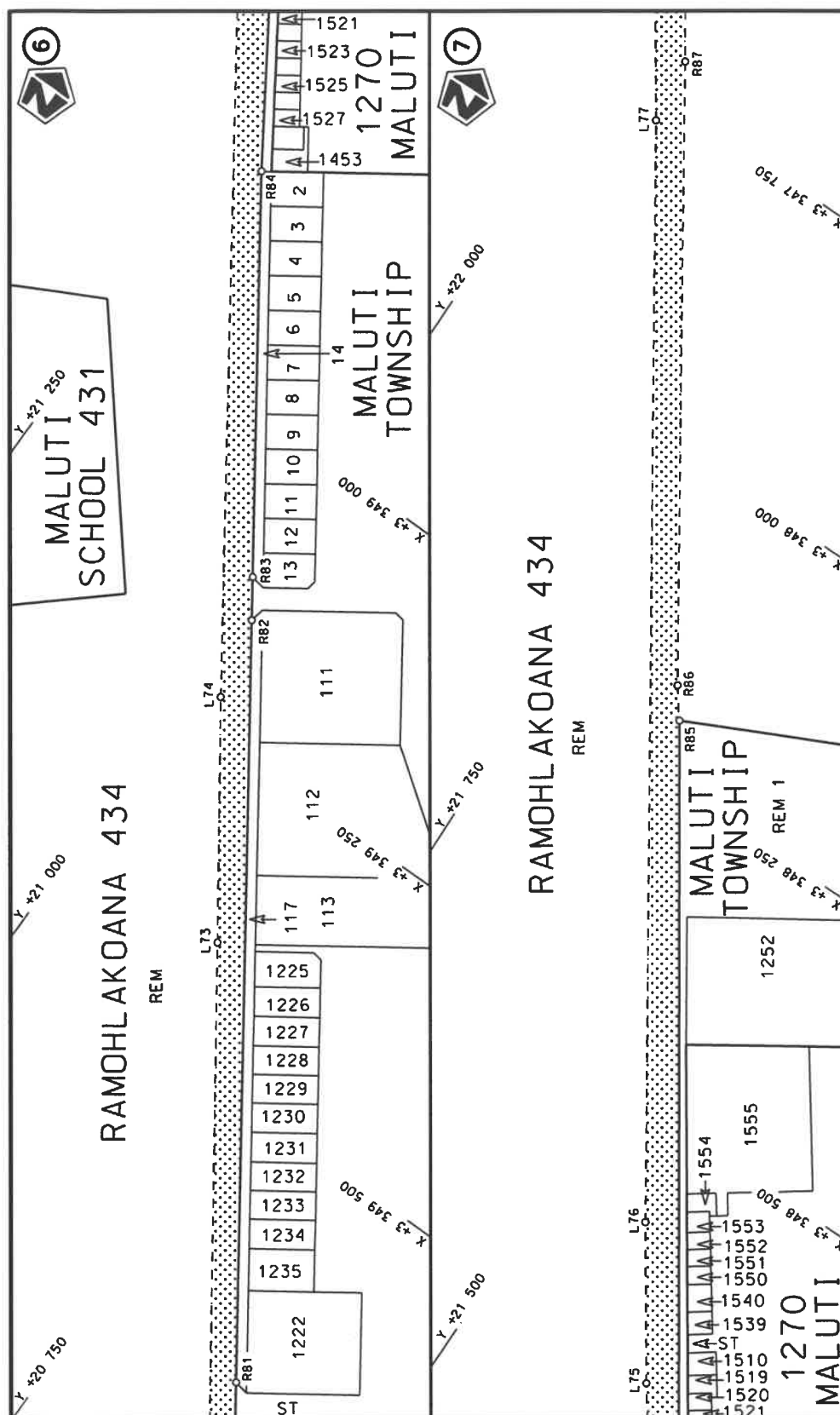





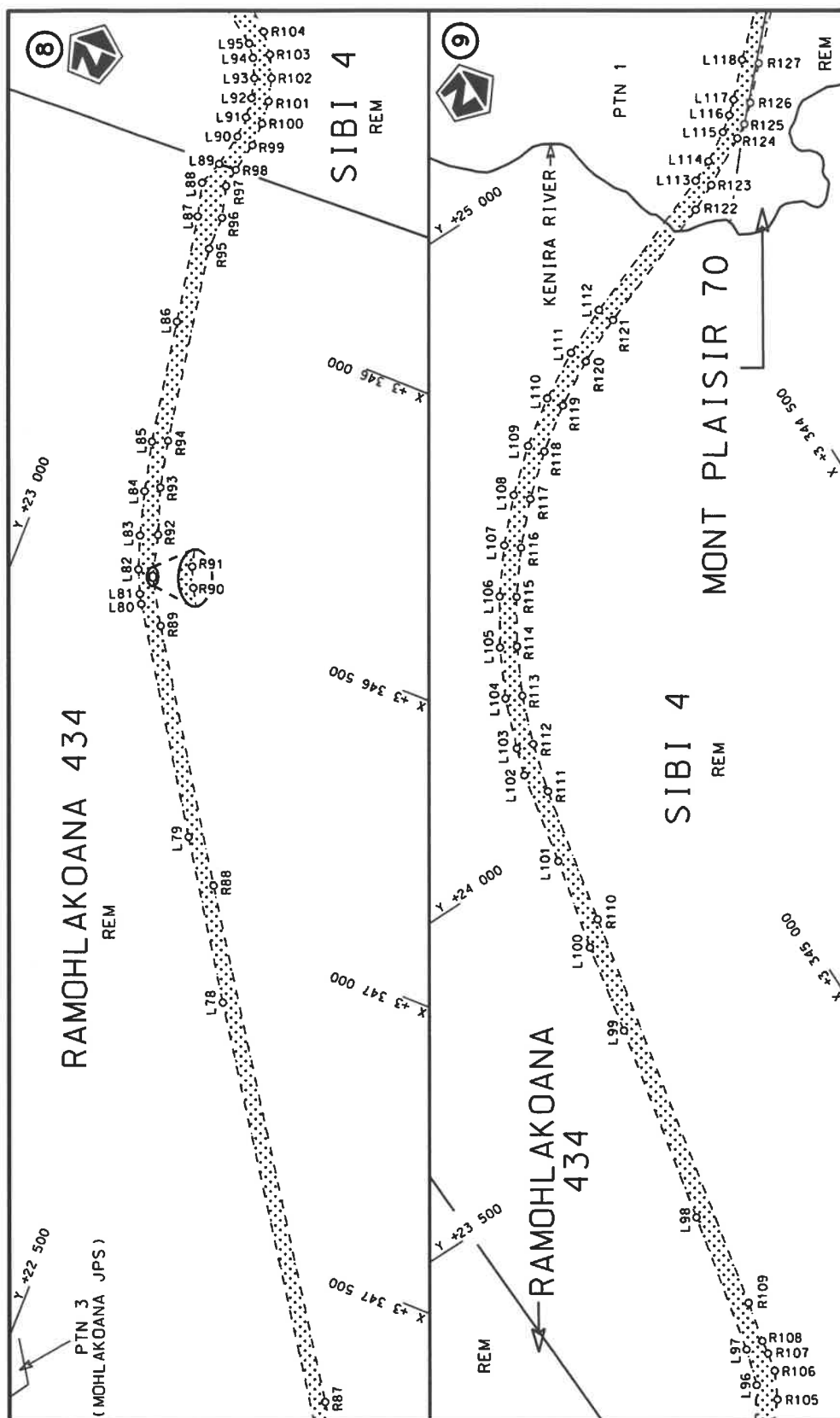
Die Suid Afrikaanse Nasionale Padogentskap MSB Bpk The South African National Roads Agency SOC Ltd	Die figuur getoon The figure shown		steldie padreserwe voor van 'n gedeelte represents the road reserve of a portion van Nasionale Roete R415 of National Route	Vel Sheet	van 2 of	23
				Plan	P1261/25	



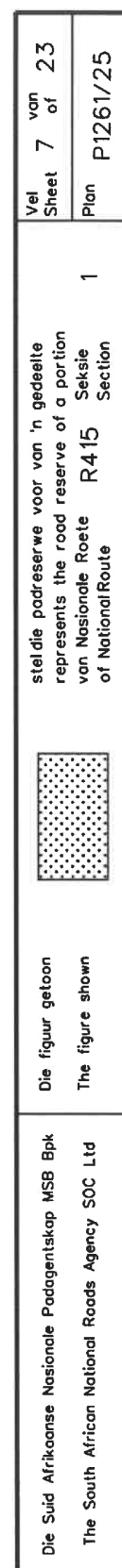


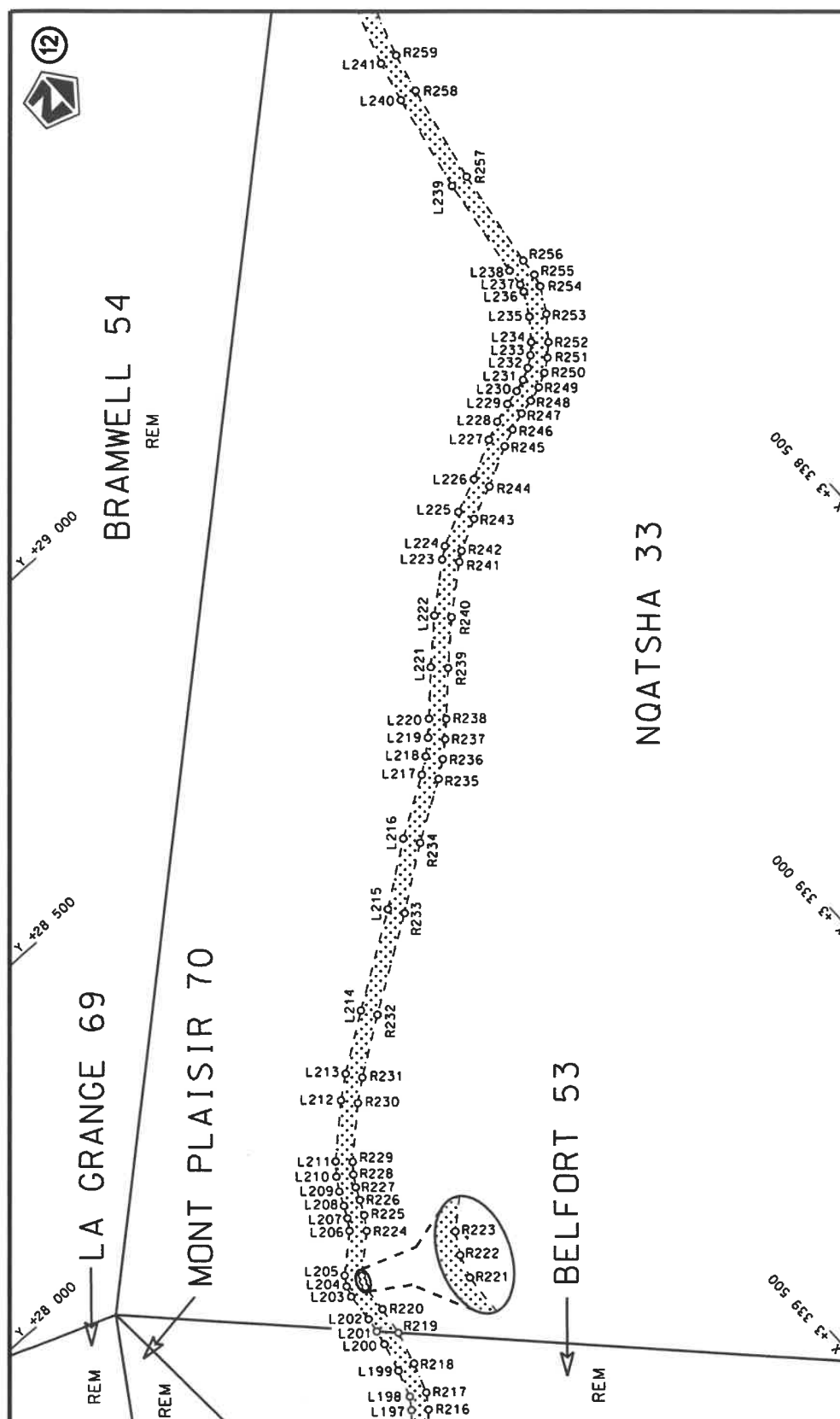


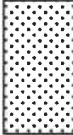
Die Suid Afrikaanse Nasionale Padagentskap MSB Bpk	Die figuur getoon		stel die padreserwe voor van 'n gedeelte represents the road reserve of a portion	Vel Sheet	5 of	23 of
The South African National Roads Agency SOC Ltd	The figure shown		van Nasionale Roete R415 Seksie of National Route Section	Plan	P1261/25	

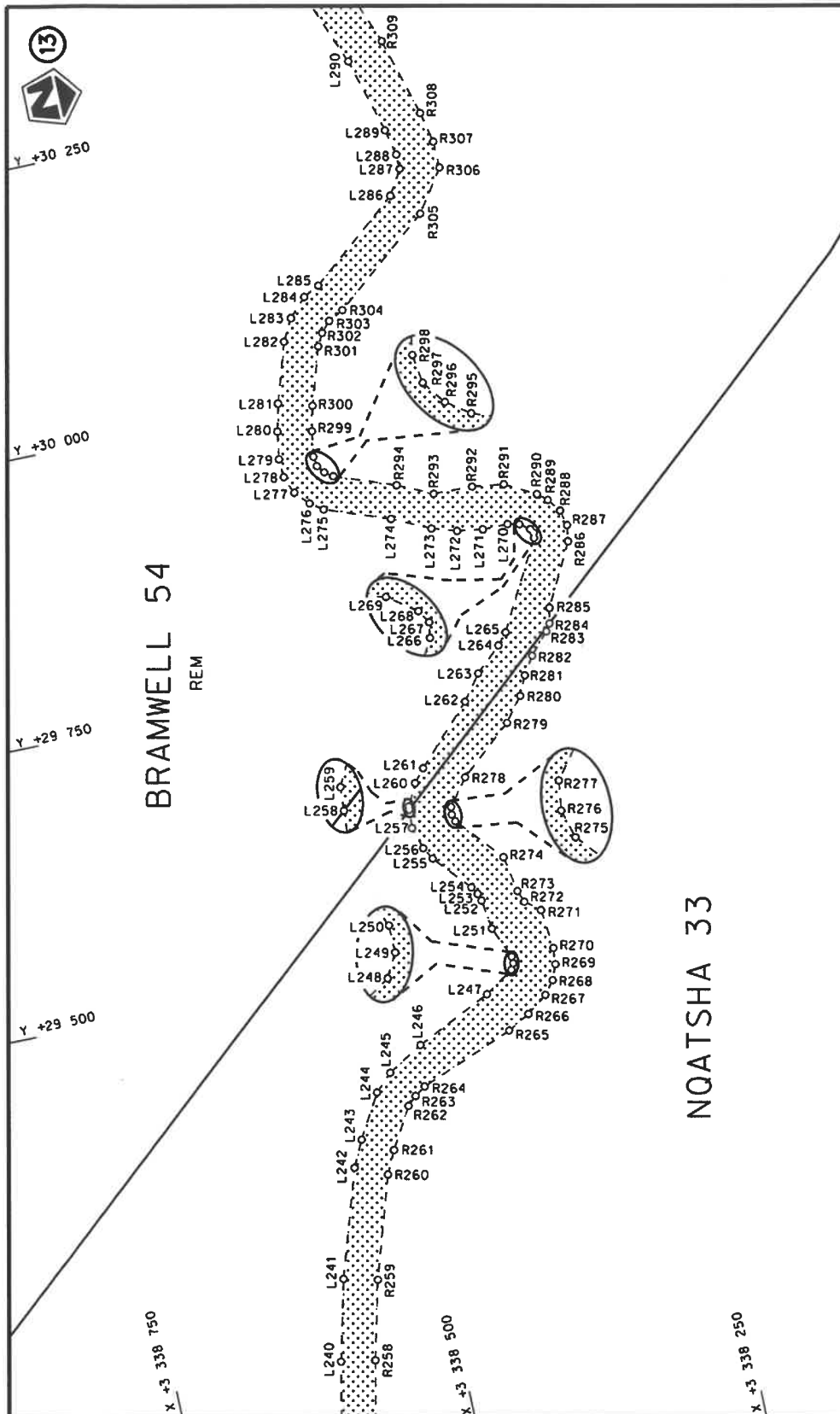


Die Suid Afrikaanse Nasionale Padagentskap MSB Bpk The South African National Roads Agency SOC Ltd	Die figuur getoon The figure shown	stel die padreserwe voor van 'n gedeelte represents the road reserve of a portion van Nasionale Roete R415 of National Route	1	Vel Sheet	van of	23	Plan P1261/25
-------------------------------------------------------------------------------------------------------	---------------------------------------	---------------------------------------------------------------------------------------------------------------------------------------	---	--------------	-----------	----	------------------

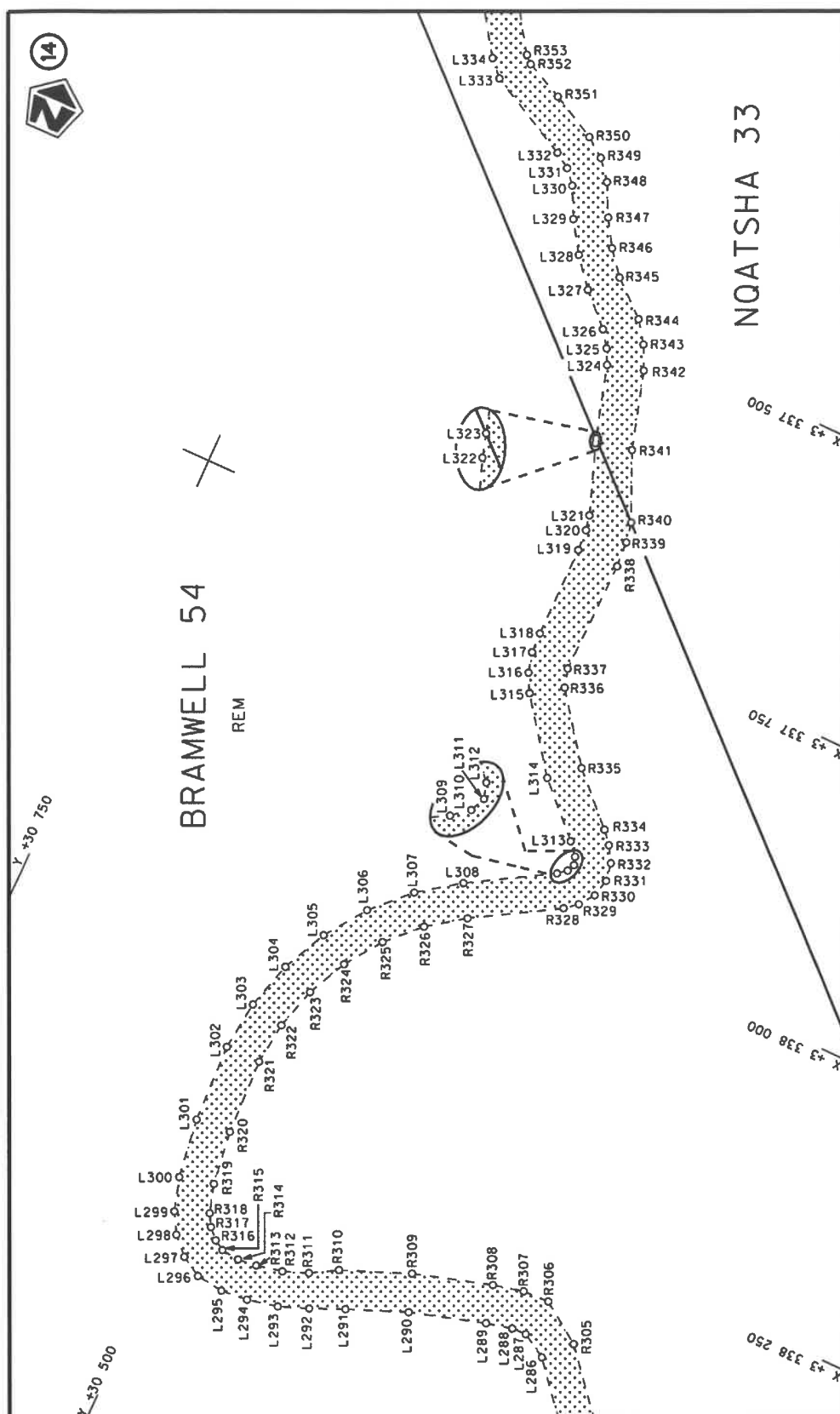





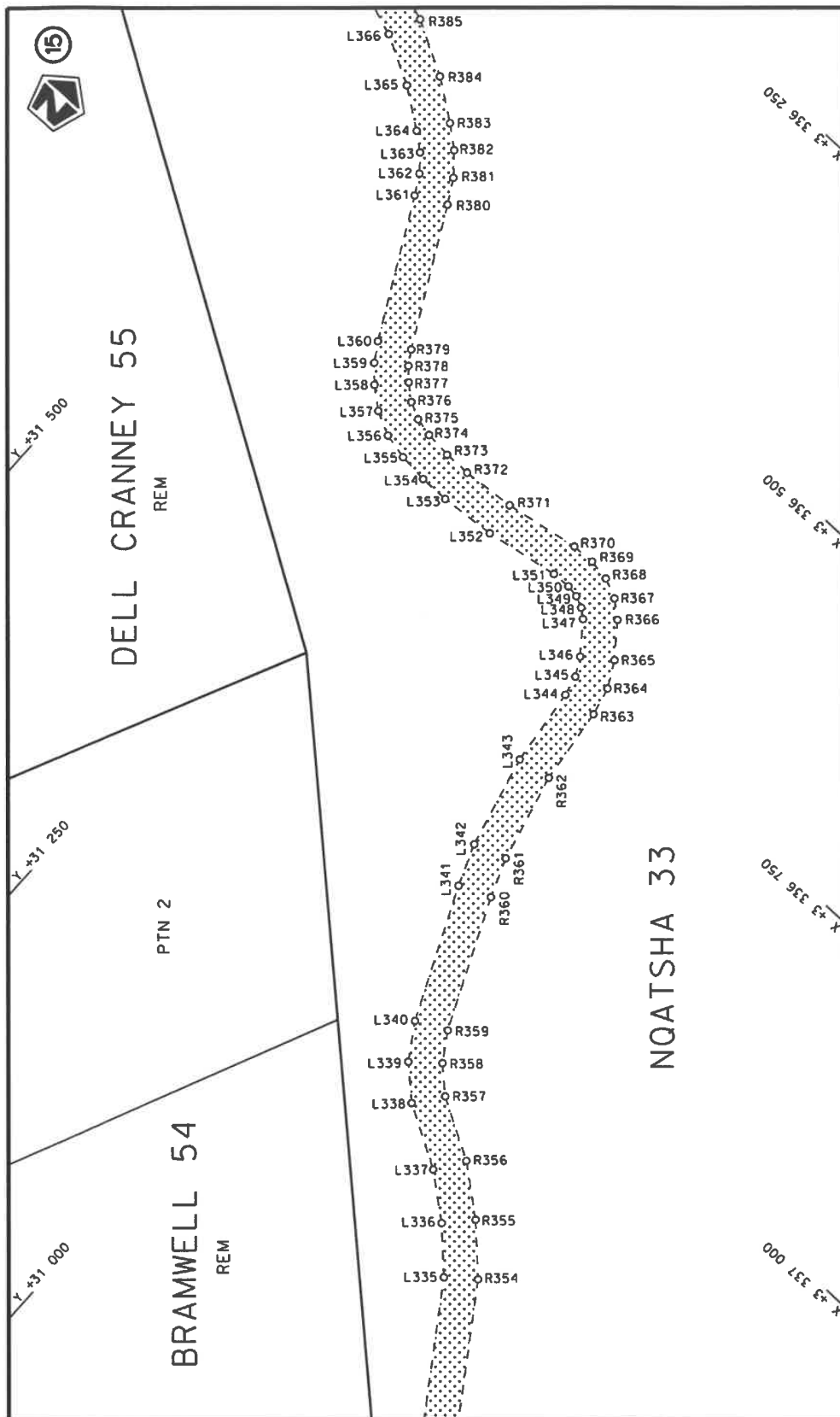
Vel Sheet 8 of 23	1	stel die padreserwe voor van 'n gedeelte represents the road reserve of a portion van Nasionale Roete R415 of National Route R415 Seksie Section		Die figuur getoon The figure shown	Die Suid Afrikaanse Nasionale Padagentskap MSB Bpk The South African National Roads Agency SOC Ltd
-------------------------------	---	-----------------------------------------------------------------------------------------------------------------------------------------------------------------	---------------------------------------------------------------------------------------	---------------------------------------	-------------------------------------------------------------------------------------------------------



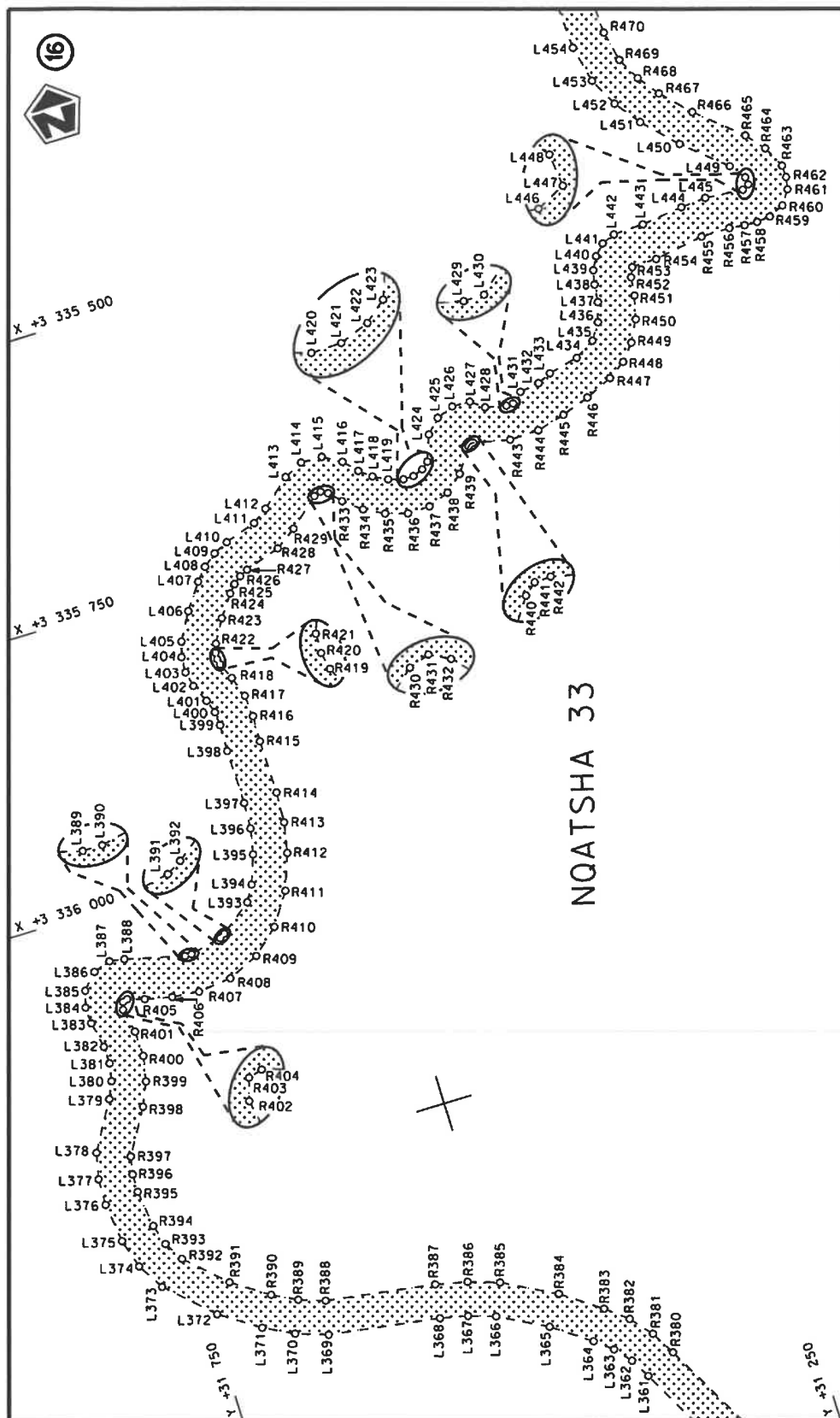
Die Suid Afrikaanse Nasionale Padageniskap MSB Bpk The South African National Roads Agency SOC Ltd	Die figuur getoon The figure shown	steldie padreserwe voor van 'n gedeelte represents the road reserve of a portion van Nasionale Roete R415 of National Route	Vel Sheet 9 of 23
		1	Plan P1261/25

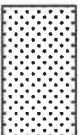


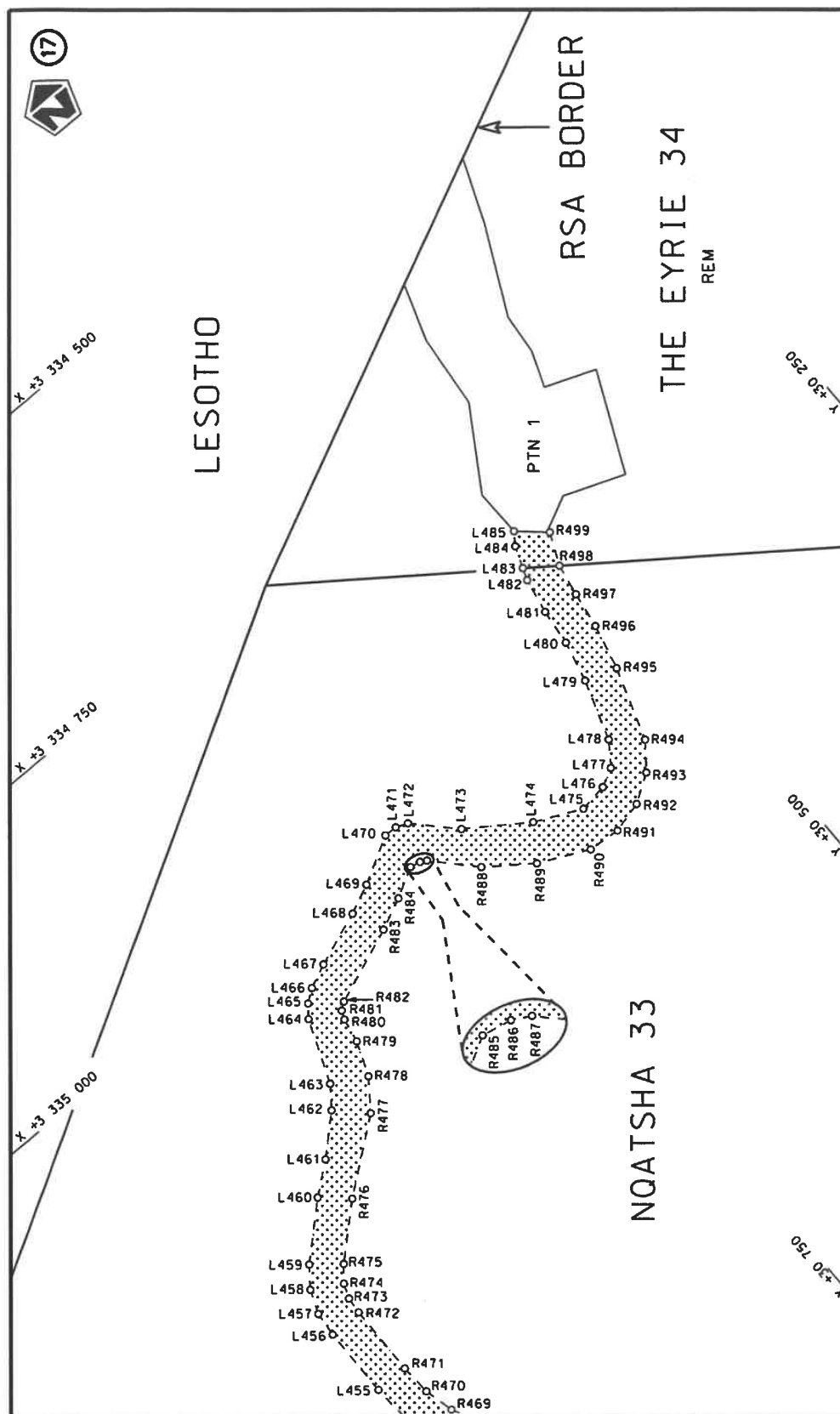
Die Suid Afrikaanse Nasionale Padagentskap MSB Bpk	Die figuur getoon		st die padreserwe voor van 'n gedeelte represents the road reserve of a portion van Nasionale Roete R415 of National Route	Vel Sheet	10 of	23
The South African National Roads Agency: SOC Ltd	The figure shown			1	Plan	P1261/25

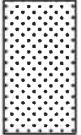


Vel Sheet 11 of 23	Plan P1261/25
stel die padreserwe voor van 'n gedeelte represents the road reserve of a portion van Nasionale Roete R415 of National Route Section 1	
Die figuur getoon The figure shown	Die Suid Afrikaanse Nasionale Padagentskap MSB Bpk The South African National Roads Agency SOC Ltd



Die Suid Afrikaanse Nasionale Padagentskap MSB Bpk The South African National Roads Agency SOC Ltd	Die figuur getoon The figure shown		stel die padreserwe voor van 'n gedeelte represents the road reserve of a portion van Nasionale Roete R415 of National Route
Vel Sheet	12 of	23	Plan P1261/25



Die Suid Afrikaanse Nasionale Padagentskap MSB Bpk The South African National Roads Agency SOC Ltd	Die figuur getoon The figure shown		steldie padreserwe voor van 'n gedeelte represents the road reserve of a portion van Nasionale Roete R415 of National Route Section	Vel Sheet	van 13 of	23
				Plan	P1261/25	1

PADRESERWE KOÖRDINATE / ROAD RESERVE CO-ORDINATES						
LINKERKANT/LEFT HAND SIDE				REGTERKANT/RIGHT HAND SIDE		
	Y	X	WG 29°		Y	X
L1	19 095.51	3 357 552.69		R1	19 060.45	3 357 563.67
L2	19 132.70	3 357 527.05		R2	19 052.32	3 357 537.70
L3	19 162.00	3 357 492.56		R3	19 081.78	3 357 526.15
L4	19 180.63	3 357 451.45		R4	19 112.60	3 357 504.83
L5	19 189.78	3 357 407.25		R5	19 136.95	3 357 476.32
L6	19 193.58	3 357 379.44		R6	19 152.15	3 357 442.17
L7	19 277.77	3 356 619.78		R7	19 159.74	3 357 405.60
L8	19 352.72	3 355 922.59		R8	19 177.93	3 357 243.28
L9	19 901.13	3 354 589.27		R9	19 248.27	3 356 626.38
L10	20 118.92	3 354 062.73		R10	19 280.72	3 356 319.10
L11	20 124.21	3 353 833.70		R11	19 323.34	3 355 915.20
L12	20 127.74	3 353 749.92		R12	19 345.80	3 355 857.66
L13	20 127.02	3 353 613.33		R13	19 445.28	3 355 609.96
L14	20 121.68	3 353 533.56		R14	19 517.05	3 355 440.73
L15	20 104.97	3 353 477.35		R15	19 766.76	3 354 829.50
L16	20 065.45	3 353 380.57		R16	20 049.38	3 354 148.49
L17	20 044.54	3 353 327.70		R17	20 062.57	3 354 114.26
L18	20 033.23	3 353 284.80		R18	20 077.22	3 354 070.53
L19	20 025.50	3 353 241.33		R19	20 086.83	3 354 025.43
L20	20 026.75	3 353 196.94		R20	20 091.29	3 353 979.52
L21	20 036.34	3 353 153.31		R21	20 097.02	3 353 612.86
L22	20 054.27	3 353 112.14		R22	20 093.48	3 353 565.84
L23	20 082.60	3 353 075.25		R23	20 083.59	3 353 519.73
L24	20 209.58	3 352 978.55		R24	20 067.79	3 353 475.29
L25	20 284.88	3 352 928.63		R25	20 040.68	3 353 408.35
L26	21 042.52	3 352 376.42		R26	20 017.00	3 353 340.13
L27	21 065.48	3 352 349.89		R27	20 004.03	3 353 291.72
L28	21 081.91	3 352 318.89		R28	19 995.40	3 353 242.56
L29	21 090.97	3 352 285.00		R29	19 997.08	3 353 192.43
L30	21 091.84	3 352 260.46		R30	20 008.06	3 353 143.23
L31	21 092.22	3 352 249.94		R31	20 028.48	3 353 096.89
L32	21 084.52	3 352 207.36		R32	20 059.06	3 353 056.50
L33	21 006.46	3 351 843.45		R33	20 097.00	3 353 022.86
L34	20 989.45	3 351 800.14		R34	21 020.82	3 352 355.60
L35	20 964.16	3 351 761.26		R35	21 040.72	3 352 332.94
L36	20 932.74	3 351 723.10		R36	21 053.98	3 352 307.92
L37	20 844.35	3 351 634.95		R37	21 061.30	3 352 280.56
L38	20 819.85	3 351 605.67		R38	21 061.73	3 352 252.31
L39	20 800.59	3 351 572.62		R39	21 060.23	3 352 245.22
L40	20 742.32	3 351 415.24		R40	21 035.96	3 352 130.82
L41	20 731.16	3 351 376.17		R41	20 968.67	3 351 834.23
L42	20 727.77	3 351 346.79		R42	20 962.53	3 351 813.36
L43	20 729.50	3 351 327.04		R43	20 939.30	3 351 778.13
L44	20 738.18	3 351 227.48		R44	20 910.72	3 351 743.51
L45	20 747.19	3 351 183.29		R45	20 823.16	3 351 656.19
L46	20 760.72	3 351 140.30		R46	20 794.91	3 351 622.35
L47	20 778.91	3 351 099.05		R47	20 772.90	3 351 584.24
L48	20 827.00	3 351 007.52		R48	20 714.19	3 351 425.66
L49	20 837.02	3 350 978.60		R49	20 704.55	3 351 384.56
L50	20 838.47	3 350 948.06		R50	20 703.62	3 351 372.66
L51	20 827.74	3 350 918.33		R51	20 701.78	3 351 334.37
				Vel Sheet	14	Van of 23
				P1261/25		

PADRESERWE KOÖRDINATE / ROAD RESERVE CO-ORDINATES						
LINKERKANT/LEFT HAND SIDE				REGTERKANT/RIGHT HAND SIDE		
	Y	X	WG 29°		Y	X
L52	20 812.98	3 350 886.51		R52	20 712.27	3 351 225.83
L53	20 787.59	3 350 853.60		R53	20 716.54	3 351 203.21
L54	20 757.20	3 350 825.25		R54	20 726.41	3 351 161.94
L55	20 391.58	3 350 607.31		R55	20 733.49	3 351 141.25
L56	20 377.55	3 350 592.00		R56	20 759.05	3 351 072.84
L57	20 362.84	3 350 570.23		R57	20 786.08	3 351 023.35
L58	20 352.08	3 350 546.18		R58	20 797.13	3 351 004.99
L59	20 344.12	3 350 521.32		R59	20 813.04	3 350 959.13
L60	20 303.36	3 350 362.98		R60	20 810.71	3 350 943.43
L61	20 292.55	3 350 314.88		R61	20 803.65	3 350 918.71
L62	20 284.68	3 350 263.50		R62	20 791.47	3 350 899.56
L63	20 283.78	3 350 254.00		R63	20 769.05	3 350 870.49
L64	20 283.80	3 350 249.09		R64	20 746.56	3 350 849.26
L65	20 284.17	3 350 244.81		R65	20 723.86	3 350 832.64
L66	20 285.06	3 350 240.02		R66	20 380.21	3 350 628.74
L67	20 286.99	3 350 231.19		R67	20 357.92	3 350 607.82
L68	20 290.16	3 350 220.60		R68	20 340.82	3 350 582.06
L69	20 297.38	3 350 202.70		R69	20 329.09	3 350 553.49
L70	20 313.38	3 350 177.38		R70	20 278.99	3 350 372.13
L71	20 540.57	3 349 849.55		R71	20 269.04	3 350 325.29
L72	20 583.69	3 349 782.33		R72	20 260.98	3 350 278.97
L73	20 851.35	3 349 399.28		R73	20 260.53	3 350 249.14
L74	20 975.57	3 349 222.63		R74	20 265.84	3 350 219.45
L75	21 334.69	3 348 701.42		R75	20 271.64	3 350 201.23
L76	21 413.34	3 348 583.29		R76	20 293.01	3 350 162.36
L77	21 938.01	3 347 769.11		R77	20 514.75	3 349 842.29
L78	22 369.80	3 347 125.17		R78	20 540.41	3 349 805.31
L79	22 533.19	3 346 877.21		R79	20 566.02	3 349 768.34
L80	22 761.63	3 346 527.70		R80	20 586.44	3 349 738.86
L81	22 770.39	3 346 512.34		R81	20 610.72	3 349 703.79
L82	22 788.77	3 346 473.14		R82	20 993.02	3 349 152.04
L83	22 808.17	3 346 416.82		R83	21 014.72	3 349 120.73
L84	22 829.62	3 346 341.77		R84	21 217.80	3 348 827.63
L85	22 849.92	3 346 256.28		R85	21 630.84	3 348 198.27
L86	22 887.10	3 346 044.62		R86	21 649.26	3 348 172.97
L87	22 921.54	3 345 859.96		R87	21 944.87	3 347 712.09
L88	22 936.37	3 345 802.23		R88	22 460.87	3 346 940.31
L89	22 921.05	3 345 760.67		R89	22 715.78	3 346 550.96
L90	22 909.15	3 345 704.01		R90	22 759.76	3 346 477.76
L91	22 907.88	3 345 667.64		R91	22 761.41	3 346 474.13
L92	22 911.53	3 345 632.72		R92	22 779.24	3 346 404.15
L93	22 920.14	3 345 598.51		R93	22 806.37	3 346 325.63
L94	22 935.58	3 345 566.54		R94	22 823.91	3 346 244.35
L95	22 950.92	3 345 545.52		R95	22 882.14	3 345 904.85
L96	23 007.39	3 345 505.75		R96	22 881.10	3 345 846.49
L97	23 069.39	3 345 486.53		R97	22 895.30	3 345 792.27
L98	23 312.53	3 345 433.78		R98	22 890.15	3 345 759.50
L99	23 657.16	3 345 361.57		R99	22 879.48	3 345 708.72
L100	23 812.00	3 345 331.98		R100	22 877.87	3 345 667.59
L101	23 969.10	3 345 295.98		R101	22 882.08	3 345 626.95
L102	24 127.76	3 345 263.41		R102	22 892.33	3 345 587.25
				Vel Sheet	15	Van of 23 P1261/25

PADRESERWE KOÖRDINATE / ROAD RESERVE CO-ORDINATES						
LINKERKANT/LEFT HAND SIDE				REGTERKANT/RIGHT HAND SIDE		
	Y	X	WG 29°		Y	X
L103	24 174.74	3 345 249.20		R103	22 910.41	3 345 550.18
L104	24 259.04	3 345 218.10		R104	22 935.06	3 345 516.79
L105	24 339.28	3 345 177.54		R105	22 965.76	3 345 488.39
L106	24 415.08	3 345 129.25		R106	23 010.90	3 345 464.96
L107	24 485.81	3 345 073.82		R107	23 042.84	3 345 458.20
L108	24 550.80	3 345 011.80		R108	23 066.80	3 345 455.09
L109	24 609.45	3 344 943.76		R109	23 136.27	3 345 438.72
L110	24 661.20	3 344 870.35		R110	23 846.15	3 345 293.78
L111	24 705.57	3 344 792.25		R111	24 081.81	3 345 244.41
L112	24 742.15	3 344 710.21		R112	24 165.33	3 345 220.72
L113	24 840.62	3 344 445.18		R113	24 246.89	3 345 190.67
L114	24 856.93	3 344 408.01		R114	24 324.49	3 345 151.44
L115	24 885.86	3 344 358.89		R115	24 397.81	3 345 104.71
L116	24 904.70	3 344 333.46		R116	24 466.22	3 345 051.10
L117	24 923.55	3 344 312.07		R117	24 529.08	3 344 991.10
L118	24 974.07	3 344 261.63		R118	24 585.81	3 344 925.29
L119	25 224.06	3 343 986.76		R119	24 635.87	3 344 854.28
L120	25 262.51	3 343 926.41		R120	24 678.79	3 344 778.74
L121	25 291.94	3 343 877.21		R121	24 714.15	3 344 699.43
L122	25 314.50	3 343 810.19		R122	24 797.88	3 344 472.68
L123	25 315.25	3 343 744.68		R123	24 819.36	3 344 426.53
L124	25 312.70	3 343 720.30		R124	24 862.90	3 344 343.30
L125	25 314.47	3 343 686.80		R125	24 876.82	3 344 319.86
L126	25 313.89	3 343 673.94		R126	24 902.49	3 344 290.71
L127	25 311.93	3 343 629.77		R127	24 952.60	3 344 240.68
L128	25 309.50	3 343 532.50		R128	25 144.79	3 344 038.30
L129	25 319.50	3 343 071.45		R129	25 188.03	3 343 988.53
L130	25 316.50	3 342 930.36		R130	25 217.33	3 343 949.75
L131	25 322.62	3 342 808.43		R131	25 242.92	3 343 908.44
L132	25 323.27	3 342 743.69		R132	25 249.83	3 343 894.53
L133	25 328.70	3 342 679.19		R133	25 264.65	3 343 864.76
L134	25 338.87	3 342 615.26		R134	25 277.10	3 343 829.48
L135	25 344.65	3 342 575.09		R135	25 282.72	3 343 795.15
L136	25 354.90	3 342 535.91		R136	25 282.99	3 343 780.37
L137	25 453.71	3 342 200.41		R137	25 285.06	3 343 665.76
L138	25 488.98	3 342 089.97		R138	25 283.29	3 343 482.26
L139	25 515.66	3 342 021.60		R139	25 285.87	3 343 373.18
L140	25 528.57	3 341 993.17		R140	25 286.38	3 343 333.51
L141	25 543.40	3 341 965.56		R141	25 285.11	3 343 192.77
L142	25 568.24	3 341 930.89		R142	25 289.50	3 343 071.17
L143	25 599.41	3 341 901.85		R143	25 286.48	3 342 930.01
L144	25 635.70	3 341 879.53		R144	25 292.60	3 342 808.07
L145	25 665.25	3 341 866.64		R145	25 293.30	3 342 742.28
L146	25 695.75	3 341 856.22		R146	25 298.92	3 342 675.57
L147	25 801.44	3 341 829.22		R147	25 305.10	3 342 629.78
L148	25 906.48	3 341 793.69		R148	25 324.29	3 342 561.50
L149	25 925.09	3 341 781.35		R149	25 326.22	3 342 551.65
L150	25 941.47	3 341 766.35		R150	25 327.66	3 342 539.91
L151	25 964.38	3 341 738.10		R151	25 416.23	3 342 239.55
L152	25 984.82	3 341 708.07		R152	25 419.39	3 342 240.26
L153	26 008.30	3 341 663.41		R153	25 443.68	3 342 161.76
				Vel Sheet	16 Van of 23	P1261/25

PADRESERWE KOÖRDINATE / ROAD RESERVE CO-ORDINATES						
LINKERKANT/LEFT HAND SIDE				REGTERKANT/RIGHT HAND SIDE		
	Y	X	WG 29°		Y	X
L154	26 019.91	3 341 633.23		R154	25 440.21	3 342 160.73
L155	26 023.91	3 341 600.74		R155	25 465.54	3 342 081.25
L156	26 007.86	3 341 549.68		R156	25 492.37	3 342 012.50
L157	26 001.43	3 341 516.12		R157	25 506.09	3 341 982.22
L158	25 995.07	3 341 438.26		R158	25 521.76	3 341 953.04
L159	25 997.41	3 341 397.67		R159	25 549.47	3 341 914.38
L160	26 007.85	3 341 357.99		R160	25 584.27	3 341 881.96
L161	26 025.99	3 341 321.18		R161	25 624.78	3 341 857.04
L162	26 051.11	3 341 288.73		R162	25 656.43	3 341 843.25
L163	26 081.25	3 341 262.60		R163	25 689.10	3 341 832.11
L164	26 211.96	3 341 188.51		R164	25 794.06	3 341 805.30
L165	26 259.23	3 341 154.03		R165	25 893.70	3 341 766.42
L166	26 302.79	3 341 115.06		R166	25 907.20	3 341 757.23
L167	26 333.86	3 341 083.86		R167	25 919.32	3 341 746.09
L168	26 364.52	3 341 048.28		R168	25 940.22	3 341 720.30
L169	26 406.79	3 340 993.10		R169	25 958.95	3 341 692.85
L170	26 458.99	3 340 935.87		R170	25 981.68	3 341 649.58
L171	26 477.28	3 340 920.61		R171	25 990.32	3 341 627.67
L172	26 498.66	3 340 909.82		R172	25 993.74	3 341 604.80
L173	26 521.59	3 340 904.21		R173	25 979.08	3 341 558.14
L174	26 770.85	3 340 882.57		R174	25 971.57	3 341 519.02
L175	26 815.19	3 340 874.63		R175	25 965.10	3 341 439.87
L176	26 857.98	3 340 860.28		R176	25 967.76	3 341 392.98
L177	26 898.29	3 340 839.81		R177	25 979.73	3 341 347.48
L178	26 946.28	3 340 800.28		R178	26 000.53	3 341 305.28
L179	26 986.95	3 340 753.35		R179	26 029.32	3 341 268.07
L180	27 009.79	3 340 716.07		R180	26 064.97	3 341 237.34
L181	27 028.43	3 340 676.65		R181	26 134.87	3 341 201.87
L182	27 066.26	3 340 579.75		R182	26 198.07	3 341 163.17
L183	27 091.56	3 340 519.81		R183	26 235.92	3 341 140.12
L184	27 123.40	3 340 433.37		R184	26 300.31	3 341 077.42
L185	27 134.98	3 340 409.15		R185	26 341.32	3 341 029.23
L186	27 150.90	3 340 385.75		R186	26 383.76	3 340 973.83
L187	27 172.68	3 340 365.67		R187	26 437.23	3 340 915.21
L188	27 195.19	3 340 351.21		R188	26 460.78	3 340 895.52
L189	27 245.83	3 340 330.10		R189	26 488.29	3 340 881.64
L190	27 333.72	3 340 300.89		R190	26 518.13	3 340 874.40
L191	27 348.65	3 340 293.34		R191	26 767.80	3 340 852.73
L192	27 361.48	3 340 282.41		R192	26 807.75	3 340 845.55
L193	27 371.37	3 340 268.79		R193	26 846.38	3 340 832.59
L194	27 403.35	3 340 193.81		R194	26 881.95	3 340 814.59
L195	27 413.58	3 340 173.70		R195	26 925.48	3 340 778.63
L196	27 430.16	3 340 154.58		R196	26 945.01	3 340 758.15
L197	27 449.58	3 340 137.13		R197	26 962.51	3 340 735.92
L198	27 469.26	3 340 123.36		R198	26 983.43	3 340 701.73
L199	27 516.68	3 340 106.47		R199	27 000.61	3 340 665.39
L200	27 567.50	3 340 093.10		R200	27 038.58	3 340 568.15
L201	27 592.71	3 340 088.74		R201	27 063.52	3 340 509.13
L202	27 618.72	3 340 084.25		R202	27 095.28	3 340 421.27
L203	27 668.69	3 340 080.15		R203	27 108.58	3 340 394.89
L204	27 687.20	3 340 074.08		R204	27 127.95	3 340 366.38
				Vel Sheet	17 Van of	23 P1261/25

PADRESERWE KOÖRDINATE / ROAD RESERVE CO-ORDINATES						
LINKERKANT/LEFT HAND SIDE				REGTERKANT/RIGHT HAND SIDE		
	Y	X	WG 29°		Y	X
L205	27 703.78	3 340 063.72		R205	27 131.13	3 340 363.33
L206	27 756.24	3 340 004.71		R206	27 152.88	3 340 342.42
L207	27 775.07	3 339 992.47		R207	27 182.16	3 340 324.17
L208	27 795.41	3 339 982.31		R208	27 235.75	3 340 301.84
L209	27 819.63	3 339 971.58		R209	27 323.52	3 340 272.67
L210	27 842.40	3 339 957.61		R210	27 332.01	3 340 268.33
L211	27 863.13	3 339 940.74		R211	27 339.44	3 340 262.00
L212	27 936.19	3 339 861.48		R212	27 344.58	3 340 255.12
L213	27 965.42	3 339 823.78		R213	27 375.57	3 340 182.48
L214	28 029.69	3 339 729.18		R214	27 389.11	3 340 156.27
L215	28 129.81	3 339 574.43		R215	27 408.74	3 340 133.56
L216	28 203.58	3 339 471.15		R216	27 430.97	3 340 113.59
L217	28 264.95	3 339 372.34		R217	27 455.67	3 340 096.47
L218	28 284.37	3 339 345.61		R218	27 507.80	3 340 077.81
L219	28 305.82	3 339 320.48		R219	27 565.61	3 340 062.42
L220	28 329.33	3 339 296.97		R220	27 615.49	3 340 054.41
L221	28 394.28	3 339 233.67		R221	27 664.07	3 340 050.43
L222	28 457.28	3 339 168.29		R222	27 674.23	3 340 046.99
L223	28 520.99	3 339 092.47		R223	27 683.36	3 340 041.54
L224	28 535.24	3 339 073.07		R224	27 735.96	3 339 982.36
L225	28 563.87	3 339 015.52		R225	27 759.29	3 339 966.93
L226	28 588.32	3 338 956.83		R226	27 784.08	3 339 954.53
L227	28 622.01	3 338 891.06		R227	27 805.67	3 339 945.01
L228	28 635.68	3 338 858.83		R228	27 825.04	3 339 933.13
L229	28 646.64	3 338 824.87		R229	27 842.41	3 339 919.02
L230	28 652.69	3 338 797.56		R230	27 912.89	3 339 842.58
L231	28 659.57	3 338 776.17		R231	27 940.90	3 339 806.50
L232	28 669.74	3 338 756.03		R232	28 004.69	3 339 712.60
L233	28 682.93	3 338 737.73		R233	28 105.00	3 339 557.56
L234	28 699.11	3 338 721.45		R234	28 178.38	3 339 454.83
L235	28 734.54	3 338 693.60		R235	28 240.00	3 339 355.67
L236	28 773.64	3 338 671.47		R236	28 260.80	3 339 327.04
L237	28 786.70	3 338 667.73		R237	28 283.79	3 339 300.12
L238	28 817.73	3 338 665.32		R238	28 308.75	3 339 275.14
L239	28 994.75	3 338 639.82		R239	28 372.91	3 339 212.61
L240	29 166.01	3 338 604.52		R240	28 435.02	3 339 148.17
L241	29 236.76	3 338 587.26		R241	28 497.90	3 339 073.32
L242	29 330.34	3 338 557.48		R242	28 509.76	3 339 057.20
L243	29 353.26	3 338 546.26		R243	28 536.54	3 339 003.11
L244	29 390.96	3 338 524.35		R244	28 560.70	3 338 945.12
L245	29 405.51	3 338 509.24		R245	28 594.91	3 338 878.18
L246	29 423.85	3 338 478.37		R246	28 607.56	3 338 848.34
L247	29 455.34	3 338 411.91		R247	28 617.54	3 338 817.54
L248	29 471.97	3 338 386.35		R248	28 623.49	3 338 790.66
L249	29 477.19	3 338 383.53		R249	28 631.80	3 338 764.78
L250	29 483.27	3 338 383.65		R250	28 644.09	3 338 740.45
L251	29 510.86	3 338 395.68		R251	28 660.02	3 338 718.33
L252	29 536.82	3 338 399.47		R252	28 679.19	3 338 699.00
L253	29 543.40	3 338 401.60		R253	28 718.15	3 338 668.46
L254	29 550.02	3 338 405.79		R254	28 761.37	3 338 644.05
L255	29 581.75	3 338 433.63		R255	28 783.09	3 338 637.91
				Vel Sheet	18 Van of	23 P1261/25

PADRESERWE KOÖRDINATE / ROAD RESERVE CO-ORDINATES									
LINKERKANT/LEFT HAND SIDE					REGTERKANT/RIGHT HAND SIDE				
	Y	X	WG 29°			Y	X		
L256	29 592.45	3 338 439.89		R256	28 814.35	3 338 635.53			
L257	29 611.63	3 338 445.85		R257	28 989.65	3 338 610.25			
L258	29 627.92	3 338 444.84		R258	29 161.09	3 338 574.90			
L259	29 630.89	3 338 444.65		R259	29 229.82	3 338 558.05			
L260	29 649.83	3 338 435.00		R260	29 318.51	3 338 529.89			
L261	29 661.23	3 338 425.38		R261	29 338.42	3 338 520.18			
L262	29 710.55	3 338 377.37		R262	29 373.67	3 338 499.70			
L263	29 732.53	3 338 360.75		R263	29 380.99	3 338 491.86			
L264	29 752.81	3 338 338.23		R264	29 387.44	3 338 482.33			
L265	29 762.82	3 338 329.77		R265	29 420.20	3 338 399.35			
L266	29 838.54	3 338 287.97		R266	29 430.90	3 338 379.69			
L267	29 843.07	3 338 287.28		R267	29 444.15	3 338 361.65			
L268	29 846.92	3 338 289.71		R268	29 455.40	3 338 352.65			
L269	29 852.95	3 338 298.07		R269	29 468.80	3 338 347.32			
L270	29 855.27	3 338 308.31		R270	29 483.16	3 338 346.14			
L271	29 855.21	3 338 330.51		R271	29 517.81	3 338 349.89			
L272	29 858.63	3 338 352.94		R272	29 528.10	3 338 362.74			
L273	29 865.46	3 338 374.55		R273	29 538.47	3 338 366.68			
L274	29 880.96	3 338 407.34		R274	29 570.12	3 338 372.65			
L275	29 901.28	3 338 463.28		R275	29 609.80	3 338 407.47			
L276	29 909.00	3 338 474.19		R276	29 616.16	3 338 409.31			
L277	29 920.87	3 338 485.22		R277	29 622.73	3 338 408.44			
L278	29 936.03	3 338 491.41		R278	29 645.62	3 338 391.02			
L279	29 952.25	3 338 492.19		R279	29 684.87	3 338 345.05			
L280	29 976.28	3 338 488.49		R280	29 705.60	3 338 328.62			
L281	30 000.18	3 338 482.84		R281	29 722.29	3 338 320.97			
L282	30 052.16	3 338 466.51		R282	29 737.74	3 338 311.02			
L283	30 071.22	3 338 456.31		R283	29 756.02	3 338 294.57			
L284	30 086.96	3 338 441.24		R284	29 762.30	3 338 290.26			
L285	30 094.27	3 338 427.18		R285	29 775.77	3 338 287.37			
L286	30 158.12	3 338 349.27		R286	29 829.52	3 338 259.31			
L287	30 179.46	3 338 336.38		R287	29 843.56	3 338 257.16			
L288	30 192.38	3 338 336.79		R288	29 857.33	3 338 260.62			
L289	30 215.15	3 338 342.00		R289	29 868.69	3 338 269.14			
L290	30 280.79	3 338 361.08		R290	29 875.57	3 338 277.44			
L291	30 332.29	3 338 381.35		R291	29 890.11	3 338 304.38			
L292	30 361.50	3 338 393.90		R292	29 893.82	3 338 331.97			
L293	30 387.44	3 338 403.75		R293	29 894.76	3 338 366.27			
L294	30 414.67	3 338 409.53		R294	29 908.95	3 338 396.52			
L295	30 438.50	3 338 411.62		R295	29 928.03	3 338 449.15			
L296	30 462.55	3 338 408.38		R296	29 932.88	3 338 456.01			
L297	30 480.54	3 338 397.80		R297	29 939.72	3 338 461.18			
L298	30 495.01	3 338 383.01		R298	29 948.30	3 338 462.44			
L299	30 505.08	3 338 364.99		R299	29 970.54	3 338 459.02			
L300	30 513.68	3 338 335.54		R300	29 992.23	3 338 453.90			
L301	30 520.52	3 338 283.03		R301	30 042.05	3 338 438.24			
L302	30 522.56	3 338 213.72		R302	30 052.96	3 338 432.43			
L303	30 517.23	3 338 170.14		R303	30 061.96	3 338 424.30			
L304	30 504.75	3 338 128.02		R304	30 068.83	3 338 411.06			
L305	30 485.47	3 338 088.56		R305	30 137.54	3 338 327.01			
L306	30 459.92	3 338 052.83		R306	30 173.33	3 338 301.96			
Vel Sheet 19					Van of 23		P1261/25		

PADRESERVE KOÖRDINATE / ROAD RESERVE CO-ORDINATES									
LINKERKANT/LEFT HAND SIDE					REGTERKANT/RIGHT HAND SIDE				
	Y	X	WG 29°			Y	X		
L307	30 428.80	3 338 021.83			R307	30 196.78	3 338 302.71		
L308	30 393.06	3 337 996.47			R308	30 223.58	3 338 308.84		
L309	30 321.86	3 337 954.88			R309	30 292.09	3 338 328.77		
L310	30 314.34	3 337 948.74			R310	30 351.69	3 338 352.23		
L311	30 311.34	3 337 942.10			R311	30 374.58	3 338 365.50		
L312	30 313.39	3 337 935.05			R312	30 396.46	3 338 373.83		
L313	30 322.58	3 337 924.19			R313	30 419.75	3 338 378.69		
L314	30 364.36	3 337 881.75			R314	30 436.43	3 338 380.37		
L315	30 409.34	3 337 820.25			R315	30 452.47	3 338 378.55		
L316	30 417.51	3 337 804.09			R316	30 461.23	3 338 373.18		
L317	30 422.08	3 337 786.50			R317	30 469.95	3 338 364.26		
L318	30 422.78	3 337 768.55			R318	30 475.95	3 338 353.60		
L319	30 422.23	3 337 687.82			R319	30 483.21	3 338 328.58		
L320	30 423.42	3 337 669.16			R320	30 489.33	3 338 280.82		
L321	30 425.99	3 337 656.03			R321	30 491.30	3 338 213.86		
L322	30 447.30	3 337 596.46			R322	30 486.65	3 338 176.49		
L323	30 448.45	3 337 592.40			R323	30 475.64	3 338 139.35		
L324	30 466.42	3 337 529.19			R324	30 458.64	3 338 104.55		
L325	30 472.81	3 337 516.07			R325	30 436.11	3 338 073.05		
L326	30 482.69	3 337 502.05			R326	30 408.67	3 338 045.72		
L327	30 509.17	3 337 475.98			R327	30 377.06	3 338 023.29		
L328	30 529.06	3 337 451.21			R328	30 303.91	3 337 980.53		
L329	30 546.34	3 337 424.55			R329	30 293.30	3 337 971.87		
L330	30 559.39	3 337 398.10			R330	30 283.80	3 337 958.89		
L331	30 569.84	3 337 386.00			R331	30 279.96	3 337 943.27		
L332	30 583.22	3 337 377.21			R332	30 282.37	3 337 927.37		
L333	30 656.71	3 337 338.74			R333	30 290.65	3 337 913.59		
L334	30 669.35	3 337 324.89			R334	30 299.83	3 337 902.72		
L335	30 742.80	3 337 216.91			R335	30 340.47	3 337 861.57		
L336	30 776.28	3 337 182.93			R336	30 383.23	3 337 803.11		
L337	30 813.29	3 337 153.10			R337	30 387.67	3 337 786.71		
L338	30 866.58	3 337 122.62			R338	30 385.19	3 337 686.76		
L339	30 893.16	3 337 097.63			R339	30 386.62	3 337 664.41		
L340	30 912.94	3 337 067.11			R340	30 389.80	3 337 647.05		
L341	30 964.40	3 336 953.29			R341	30 415.45	3 337 588.24		
L342	30 978.61	3 336 917.14			R342	30 434.92	3 337 520.27		
L343	30 999.40	3 336 835.42			R343	30 444.63	3 337 499.65		
L344	31 007.98	3 336 766.64			R344	30 457.76	3 337 481.02		
L345	31 012.24	3 336 749.01			R345	30 488.07	3 337 454.63		
L346	31 020.75	3 336 733.08			R346	30 504.76	3 337 433.91		
L347	31 041.03	3 336 707.12			R347	30 519.12	3 337 410.75		
L348	31 048.92	3 336 700.66			R348	30 532.92	3 337 382.79		
L349	31 058.90	3 336 696.14			R349	30 546.71	3 337 365.65		
L350	31 069.93	3 336 694.43			R350	30 563.55	3 337 353.08		
L351	31 086.67	3 336 694.87			R351	30 603.19	3 337 332.09		
L352	31 151.83	3 336 706.08			R352	30 636.88	3 337 316.05		
L353	31 200.93	3 336 709.97			R353	30 643.23	3 337 309.88		
L354	31 226.97	3 336 710.09			R354	30 719.45	3 337 198.01		
L355	31 252.99	3 336 707.73			R355	30 756.12	3 337 160.70		
L356	31 275.51	3 336 702.54			R356	30 796.87	3 337 127.94		
L357	31 296.35	3 336 692.27			R357	30 848.78	3 337 098.43		
					<div> <div>Vel</div> <div>20</div> <div>Van</div> <div>23</div> <div>Sheet</div> <div>of</div> <div>P1261/25</div> </div>				

PADRESERWE KOÖRDINATE / ROAD RESERVE CO-ORDINATES						
LINKERKANT/LEFT HAND SIDE				REGTERKANT/RIGHT HAND SIDE		
	Y	X	WG 29°		Y	X
L358	31 314.19	3 336 677.58		R358	30 870.10	3 337 078.38
L359	31 327.28	3 336 663.45		R359	30 886.03	3 337 053.84
L360	31 337.60	3 336 647.27		R360	30 936.69	3 336 941.77
L361	31 399.62	3 336 531.29		R361	30 950.04	3 336 907.81
L362	31 409.31	3 336 514.34		R362	30 969.80	3 336 830.23
L363	31 421.41	3 336 500.18		R363	30 978.24	3 336 762.64
L364	31 436.34	3 336 488.18		R364	30 984.34	3 336 737.87
L365	31 469.46	3 336 464.62		R365	30 996.52	3 336 715.37
L366	31 511.48	3 336 442.01		R366	31 018.38	3 336 687.39
L367	31 534.88	3 336 434.40		R367	31 032.95	3 336 675.21
L368	31 559.07	3 336 429.11		R368	31 050.31	3 336 667.34
L369	31 655.71	3 336 414.51		R369	31 069.03	3 336 664.43
L370	31 683.43	3 336 405.02		R370	31 089.53	3 336 664.99
L371	31 709.40	3 336 391.64		R371	31 155.60	3 336 676.32
L372	31 743.80	3 336 368.69		R372	31 202.13	3 336 679.99
L373	31 782.54	3 336 331.48		R373	31 225.71	3 336 680.11
L374	31 796.25	3 336 308.36		R374	31 249.11	3 336 677.97
L375	31 803.81	3 336 282.72		R375	31 265.43	3 336 674.24
L376	31 808.11	3 336 248.03		R376	31 280.05	3 336 667.04
L377	31 807.58	3 336 224.84		R377	31 293.35	3 336 655.96
L378	31 802.50	3 336 201.98		R378	31 303.30	3 336 645.39
L379	31 777.82	3 336 160.32		R379	31 311.15	3 336 633.11
L380	31 771.34	3 336 145.81		R380	31 372.82	3 336 517.78
L381	31 768.29	3 336 130.33		R381	31 384.79	3 336 497.02
L382	31 768.71	3 336 115.02		R382	31 400.49	3 336 478.65
L383	31 773.12	3 336 092.11		R383	31 419.17	3 336 463.58
L384	31 773.86	3 336 077.51		R384	31 453.26	3 336 439.33
L385	31 769.74	3 336 063.33		R385	31 499.44	3 336 414.48
L386	31 757.29	3 336 049.77		R386	31 526.48	3 336 405.59
L387	31 741.93	3 336 044.63		R387	31 554.14	3 336 399.52
L388	31 728.94	3 336 046.83		R388	31 649.45	3 336 385.11
L389	31 677.99	3 336 059.82		R389	31 672.06	3 336 377.24
L390	31 672.08	3 336 059.86		R390	31 693.41	3 336 366.24
L391	31 643.88	3 336 053.85		R391	31 725.17	3 336 345.05
L392	31 639.31	3 336 051.19		R392	31 758.83	3 336 313.03
L393	31 611.83	3 336 030.89		R393	31 768.71	3 336 296.36
L394	31 603.55	3 336 017.04		R394	31 774.15	3 336 278.10
L395	31 594.61	3 335 992.14		R395	31 778.21	3 336 245.34
L396	31 589.99	3 335 969.72		R396	31 777.89	3 336 229.42
L397	31 588.84	3 335 946.76		R397	31 774.79	3 336 214.06
L398	31 589.58	3 335 898.77		R398	31 751.84	3 336 175.33
L399	31 588.86	3 335 875.34		R399	31 742.72	3 336 154.89
L400	31 589.84	3 335 863.06		R400	31 738.36	3 336 132.79
L401	31 593.99	3 335 851.42		R401	31 739.05	3 336 110.36
L402	31 601.11	3 335 835.50		R402	31 743.18	3 336 088.93
L403	31 604.18	3 335 822.14		R403	31 741.23	3 336 082.37
L404	31 603.63	3 335 808.36		R404	31 736.96	3 336 081.14
L405	31 599.53	3 335 795.25		R405	31 722.33	3 336 085.52
L406	31 585.99	3 335 771.53		R406	31 699.20	3 336 090.84
L407	31 570.19	3 335 749.42		R407	31 675.41	3 336 093.30
L408	31 560.63	3 335 738.70		R408	31 645.64	3 336 090.20
				Vel Sheet	21 Van of	23 P1261/25

PADRESERWE KOÖRDINATE / ROAD RESERVE CO-ORDINATES						
LINKERKANT/LEFT HAND SIDE				REGTERKANT/RIGHT HAND SIDE		
	Y	X	WG 29°		Y	X
L409	31 549.06	3 335 729.99		R409	31 618.09	3 336 078.17
L410	31 536.07	3 335 723.76		R410	31 595.52	3 336 058.41
L411	31 508.03	3 335 714.84		R411	31 576.87	3 336 030.84
L412	31 494.74	3 335 705.74		R412	31 565.55	3 335 999.69
L413	31 469.75	3 335 684.37		R413	31 560.17	3 335 973.21
L414	31 453.26	3 335 676.06		R414	31 558.84	3 335 946.32
L415	31 434.46	3 335 676.69		R415	31 559.57	3 335 899.00
L416	31 418.52	3 335 686.12		R416	31 558.87	3 335 876.21
L417	31 407.66	3 335 697.83		R417	31 560.42	3 335 856.99
L418	31 397.24	3 335 706.14		R418	31 566.76	3 335 838.82
L419	31 384.99	3 335 712.57		R419	31 573.14	3 335 824.56
L420	31 372.42	3 335 716.38		R420	31 574.26	3 335 819.37
L421	31 363.30	3 335 716.16		R421	31 574.03	3 335 813.54
L422	31 354.33	3 335 712.82		R422	31 571.25	3 335 805.90
L423	31 347.96	3 335 707.66		R423	31 559.76	3 335 786.22
L424	31 339.68	3 335 685.36		R424	31 546.35	3 335 767.66
L425	31 328.13	3 335 673.72		R425	31 540.29	3 335 760.79
L426	31 313.12	3 335 667.80		R426	31 533.45	3 335 755.64
L427	31 297.17	3 335 668.32		R427	31 526.10	3 335 752.06
L428	31 285.87	3 335 676.99		R428	31 494.73	3 335 742.09
L429	31 267.46	3 335 681.10		R429	31 476.46	3 335 729.59
L430	31 261.18	3 335 681.06		R430	31 450.73	3 335 707.58
L431	31 252.09	3 335 673.13		R431	31 444.45	3 335 705.50
L432	31 234.87	3 335 670.58		R432	31 438.55	3 335 708.64
L433	31 222.76	3 335 665.30		R433	31 428.95	3 335 718.99
L434	31 196.39	3 335 659.35		R434	31 413.70	3 335 731.25
L435	31 178.87	3 335 648.99		R435	31 396.33	3 335 740.38
L436	31 169.44	3 335 634.99		R436	31 377.38	3 335 746.03
L437	31 164.37	3 335 618.03		R437	31 357.71	3 335 745.71
L438	31 162.61	3 335 602.59		R438	31 339.23	3 335 738.82
L439	31 160.00	3 335 590.29		R439	31 324.18	3 335 726.22
L440	31 154.06	3 335 579.21		R440	31 309.69	3 335 705.37
L441	31 145.26	3 335 570.22		R441	31 307.62	3 335 703.65
L442	31 133.61	3 335 565.52		R442	31 304.91	3 335 703.55
L443	31 106.90	3 335 564.52		R443	31 273.11	3 335 710.63
L444	31 070.23	3 335 560.08		R444	31 247.14	3 335 709.88
L445	31 047.99	3 335 558.33		R445	31 222.14	3 335 703.57
L446	31 014.61	3 335 561.37		R446	31 197.62	3 335 695.22
L447	31 008.53	3 335 558.40		R447	31 173.83	3 335 684.67
L448	31 009.29	3 335 551.58		R448	31 158.62	3 335 674.60
L449	31 019.38	3 335 538.21		R449	31 146.86	3 335 660.58
L450	31 055.38	3 335 506.76		R450	31 137.14	3 335 642.18
L451	31 082.91	3 335 478.29		R451	31 132.12	3 335 622.09
L452	31 099.40	3 335 456.28		R452	31 130.26	3 335 605.78
L453	31 112.44	3 335 431.47		R453	31 126.65	3 335 597.60
L454	31 119.88	3 335 399.01		R454	31 104.75	3 335 596.96
L455	31 121.74	3 335 365.99		R455	31 060.87	3 335 589.81
L456	31 120.97	3 335 302.70		R456	31 035.53	3 335 589.88
L457	31 118.84	3 335 280.60		R457	31 022.17	3 335 591.43
L458	31 110.55	3 335 259.73		R458	31 010.65	3 335 592.06
L459	31 096.87	3 335 242.11		R459	30 998.88	3 335 590.71
				Vel Sheet	22 Van of 23	P1261/25

PADRESERVE KOÖRDINATE / ROAD RESERVE CO-ORDINATES						
LINKERKANT/LEFT HAND SIDE				REGTERKANT/RIGHT HAND SIDE		
	Y	X	WG 29°		Y	X
L460	31 053.04	3 335 201.70		R460	30 985.39	3 335 584.76
L461	31 026.23	3 335 180.37		R461	30 976.81	3 335 572.59
L462	30 994.08	3 335 150.73		R462	30 974.78	3 335 562.04
L463	30 980.01	3 335 131.97		R463	30 975.52	3 335 551.37
L464	30 957.74	3 335 076.08		R464	30 985.02	3 335 532.48
L465	30 949.00	3 335 065.30		R465	30 998.53	3 335 516.65
L466	30 937.80	3 335 057.09		R466	31 036.75	3 335 483.20
L467	30 916.57	3 335 047.78		R467	31 059.84	3 335 459.06
L468	30 868.21	3 335 030.07		R468	31 073.61	3 335 440.89
L469	30 842.34	3 335 018.24		R469	31 084.25	3 335 420.97
L470	30 801.54	3 334 995.84		R470	31 090.25	3 335 394.12
L471	30 790.13	3 334 996.15		R471	31 091.74	3 335 366.40
L472	30 779.52	3 335 000.39		R472	31 090.96	3 335 302.48
L473	30 746.69	3 335 034.49		R473	31 089.63	3 335 287.64
L474	30 694.93	3 335 070.40		R474	31 084.48	3 335 274.68
L475	30 653.54	3 335 089.87		R475	31 073.41	3 335 261.31
L476	30 628.11	3 335 086.30		R476	31 030.58	3 335 222.10
L477	30 611.78	3 335 077.84		R477	30 969.57	3 335 174.90
L478	30 597.09	3 335 057.37		R478	30 949.95	3 335 148.75
L479	30 579.61	3 335 004.32		R479	30 938.03	3 335 118.44
L480	30 571.05	3 334 967.80		R480	30 933.79	3 335 096.87
L481	30 567.55	3 334 935.42		R481	30 930.46	3 335 089.28
L482	30 561.83	3 334 904.07		R482	30 923.85	3 335 084.39
L483	30 557.84	3 334 893.70		R483	30 856.48	3 335 058.36
L484	30 550.38	3 334 874.33		R484	30 828.59	3 335 045.61
L485	30 542.90	3 334 863.75		R485	30 802.59	3 335 031.33
				R486	30 793.42	3 335 033.24
				R487	30 787.86	3 335 036.24
				R488	30 755.18	3 335 071.49
				R489	30 715.93	3 335 100.33
				R490	30 671.74	3 335 121.36
				R491	30 642.89	3 335 123.79
				R492	30 614.84	3 335 116.75
				R493	30 590.59	3 335 101.01
				R494	30 572.73	3 335 078.24
				R495	30 551.18	3 335 013.92
				R496	30 541.67	3 334 973.36
				R497	30 536.98	3 334 940.88
				R498	30 531.95	3 334 912.68
				R499	30 519.42	3 334 884.63
				Vel Sheet	23 Van of 23	P1261/25