
GOVERNMENT NOTICES • GOEWERMENTSKENNISGEWINGS

DEPARTMENT OF TRANSPORT

NO. 7072

2 February 2026

**THE SOUTH AFRICAN NATIONAL ROADS
AGENCY SOC LIMITED**Registration No: 1998/009584/30

DECLARATION AMENDMENT OF NATIONAL ROAD R34 SECTION 3

AMENDMENT OF DECLARATION No. 4014 OF 2023.

By virtue of section 40(1)(b) of the South African National Roads Agency Limited and the National Roads Act 1998 (Act No. 7 of 1998), I hereby amend Declaration No. 4014 of 2023 by substituting a part of paragraph B of the Schedule, being the descriptive declaration of the route from the North West / Free State Provincial border, at the Vaal River, up to Hoopstad, with the accompanying sheets 1 to 7 of Plan No. P1262/25.

(National Road R34 Section 3: North West / Free State Provincial Border – Hoopstad)

MINISTER OF TRANSPORT

DEPARTEMENT VAN VERVOER

NO. 7072

2 Februarie 2026

**DIE SUID-AFRIKAANSE NASIONALE
PADAGENTSAP MSB BEPERK**

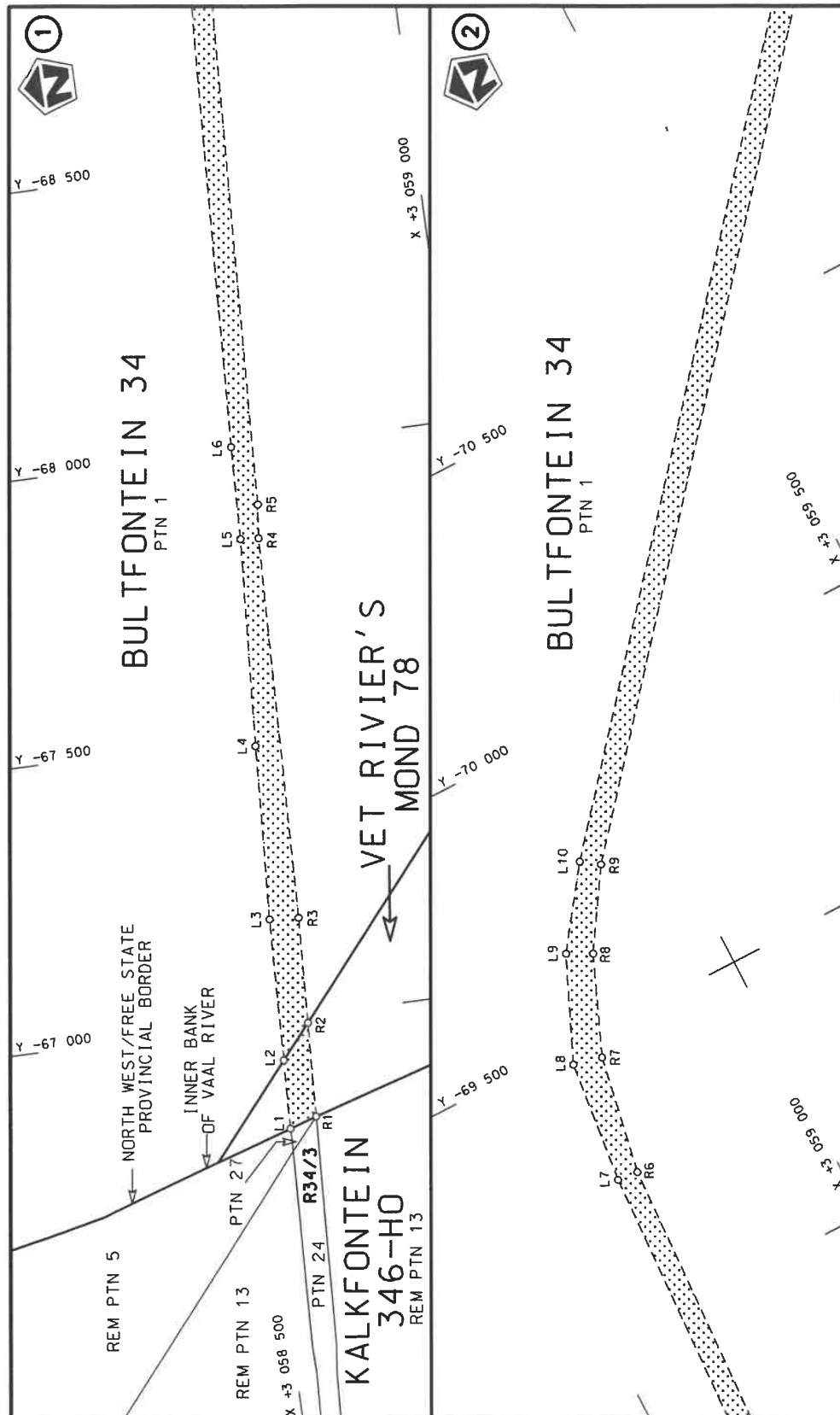
Registrasie No: 1998/009584/30

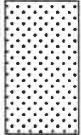
VERKLARING WYSIGING VAN NASIONALE PAD R34 SEKSIE 3

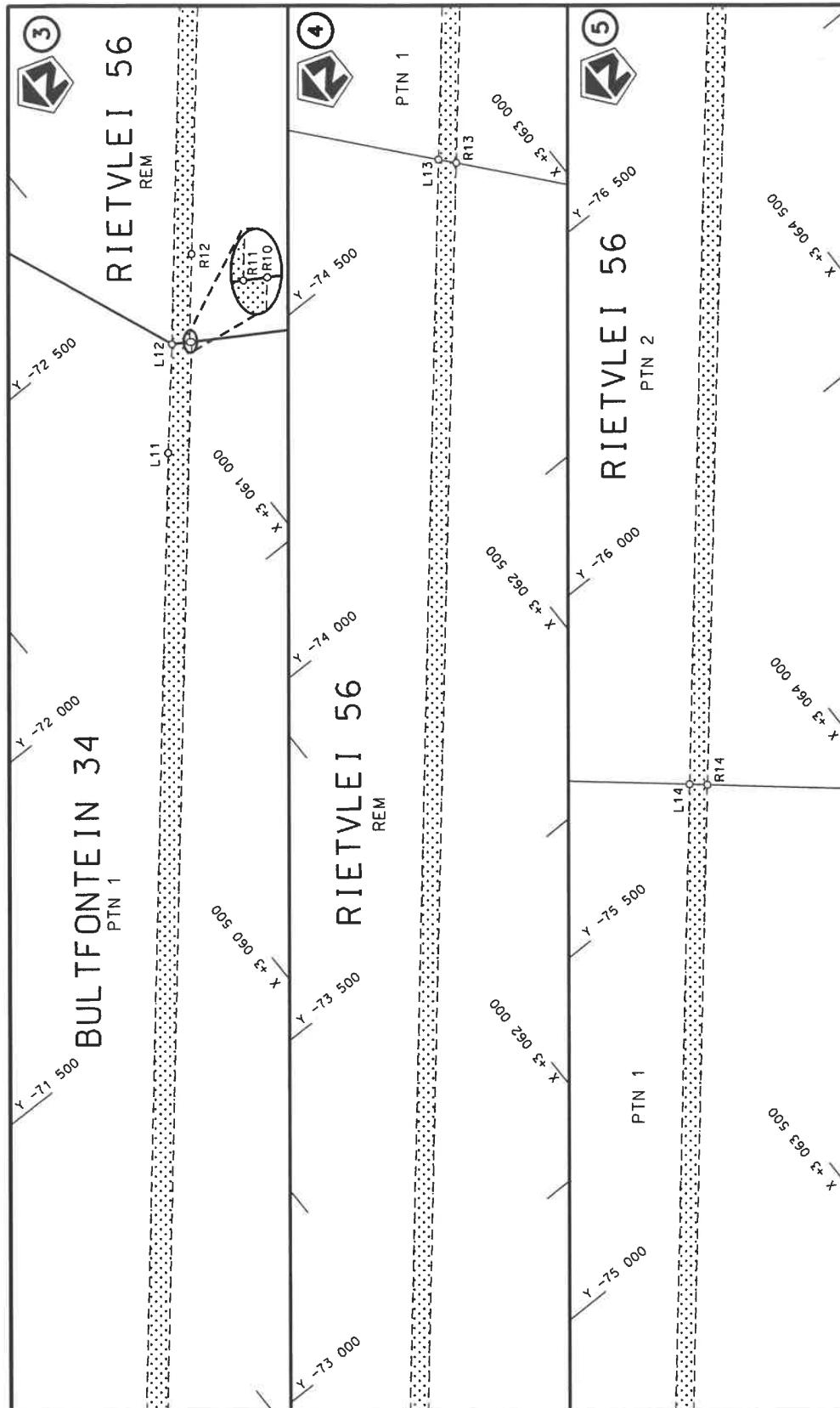
WYSIGING VAN VERKLARING No. 4014 VAN 2023.

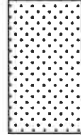
Kragtens Artikel 40(1)(b) van die Suid-Afrikaanse Nasionale Padagentskap Beperk en Nasionale Paaie Wet 1998 (Wet No. 7 van 1998), wysig ek hiermee Verklaring No. 4014 van 2023 deur 'n gedeelte van paragraaf B van die Skedule te vervang, synde die gedeelte van die beskrywende verklaring van die pad vanaf die Noord-Wes / Vrystaat Provinsiale Grens, by die Vaal Rivier, tot by Hoopstad, met bygaande velle 1 tot 7 van Plan No. P1262/25.

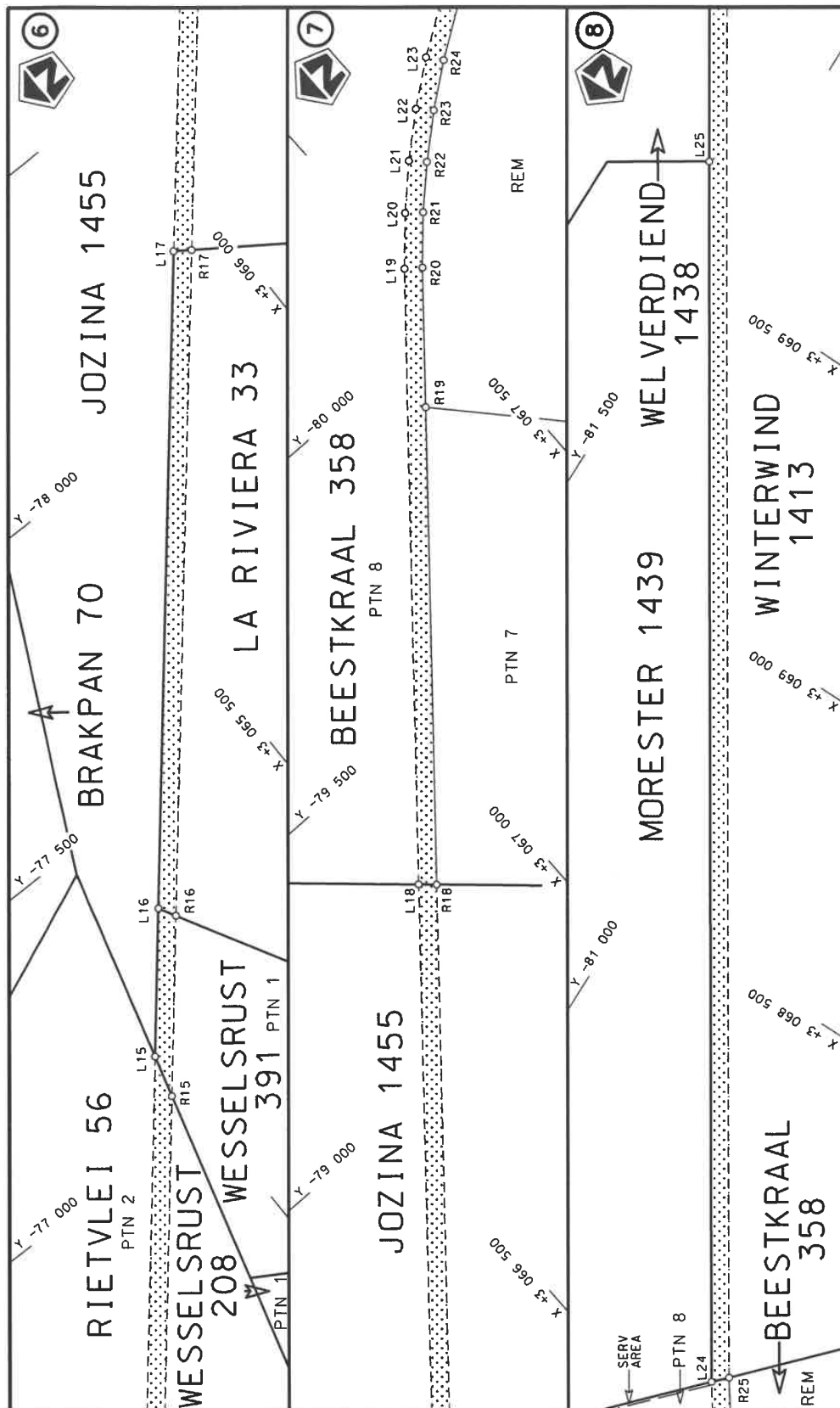
(Nasionale Pad R34 Seksie 3: Noord-Wes / Vrystaat Provinsiale Grens – Hoopstad)**MINISTER VAN VERVOER**



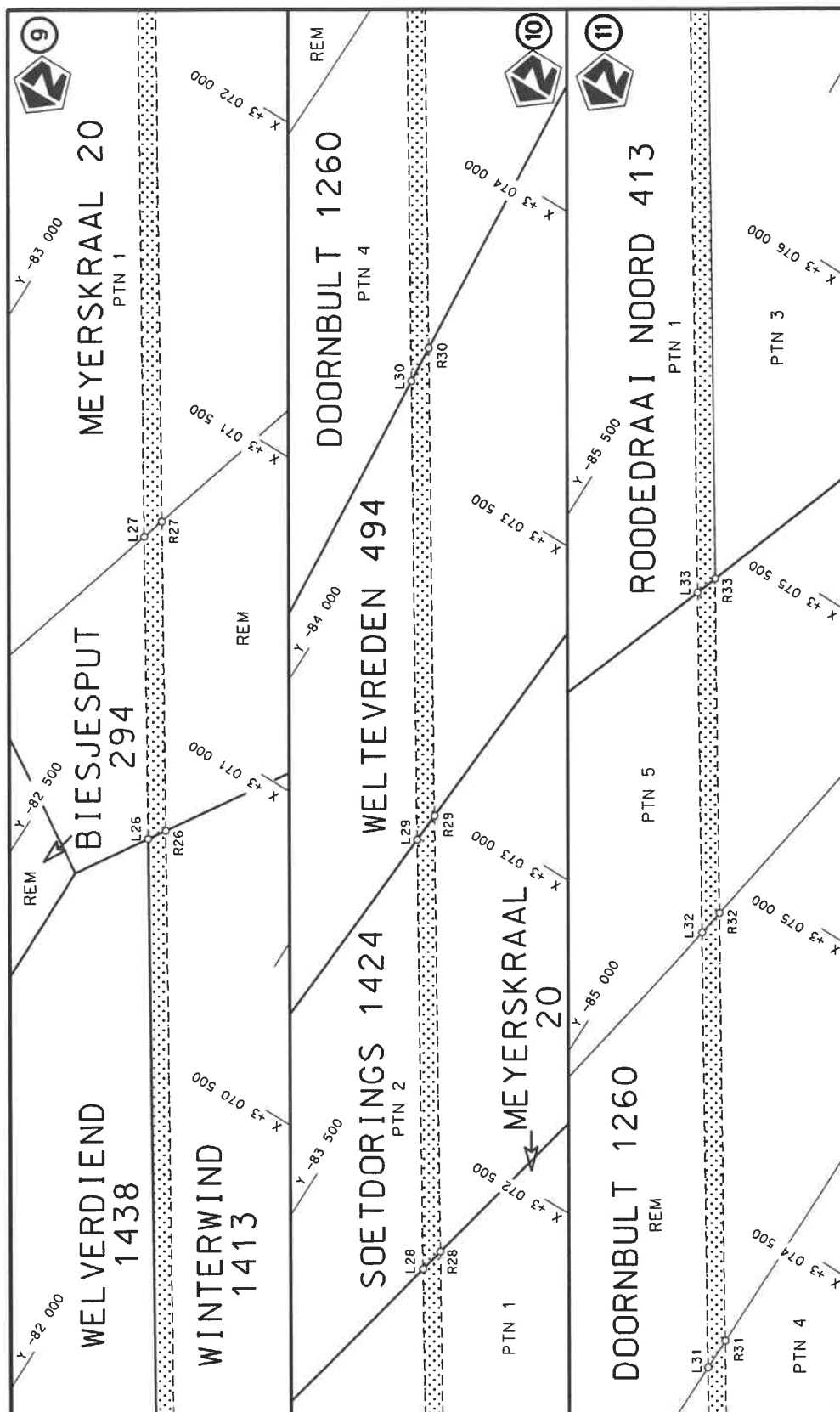
Die Suid Afrikaanse Nasionale Padagentskap MSB Bpk The South African National Roads Agency SOC Ltd	Die figuur getoon The figure shown	 stel die padreserwe voor van 'n gedeelte represents the road reserve of a portion van Nasionale Roete R34 of National Route Section	Vel Sheet 1 of 7 Plan P1262/25
---	---------------------------------------	---	---




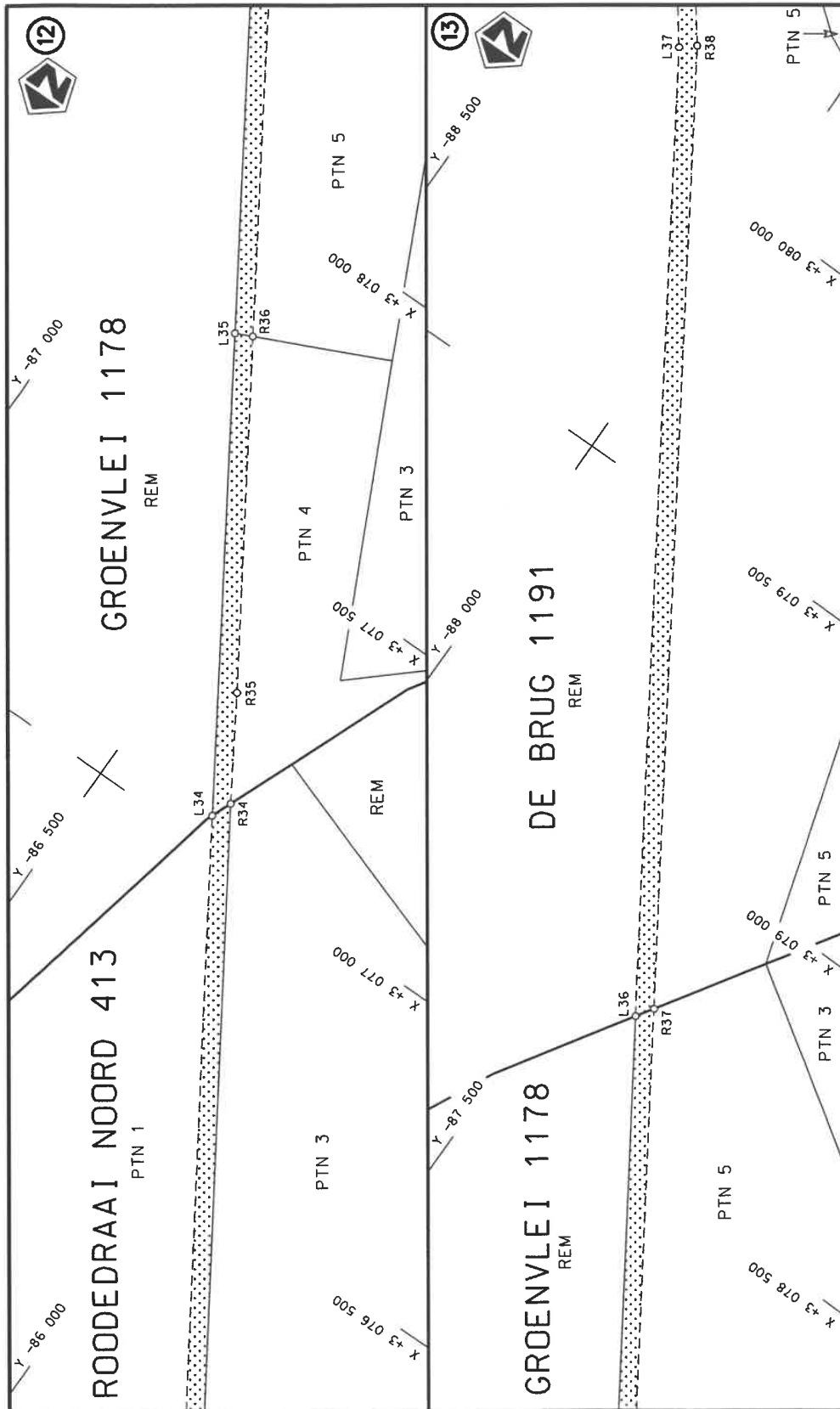
Die Suid Afrikaanse Nasionale Padagentskap MSB Bpk The South African National Roads Agency SOC Ltd	Die figuur getoon The figure shown	 stel die padreserwe voor van 'n gedeelte represents the road reserve of a portion van Nasionale Roete R34 of National Route	Vel Sheet 2 of 7 Plan P1262/25
---	---------------------------------------	---	--------------------------------------

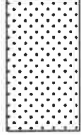


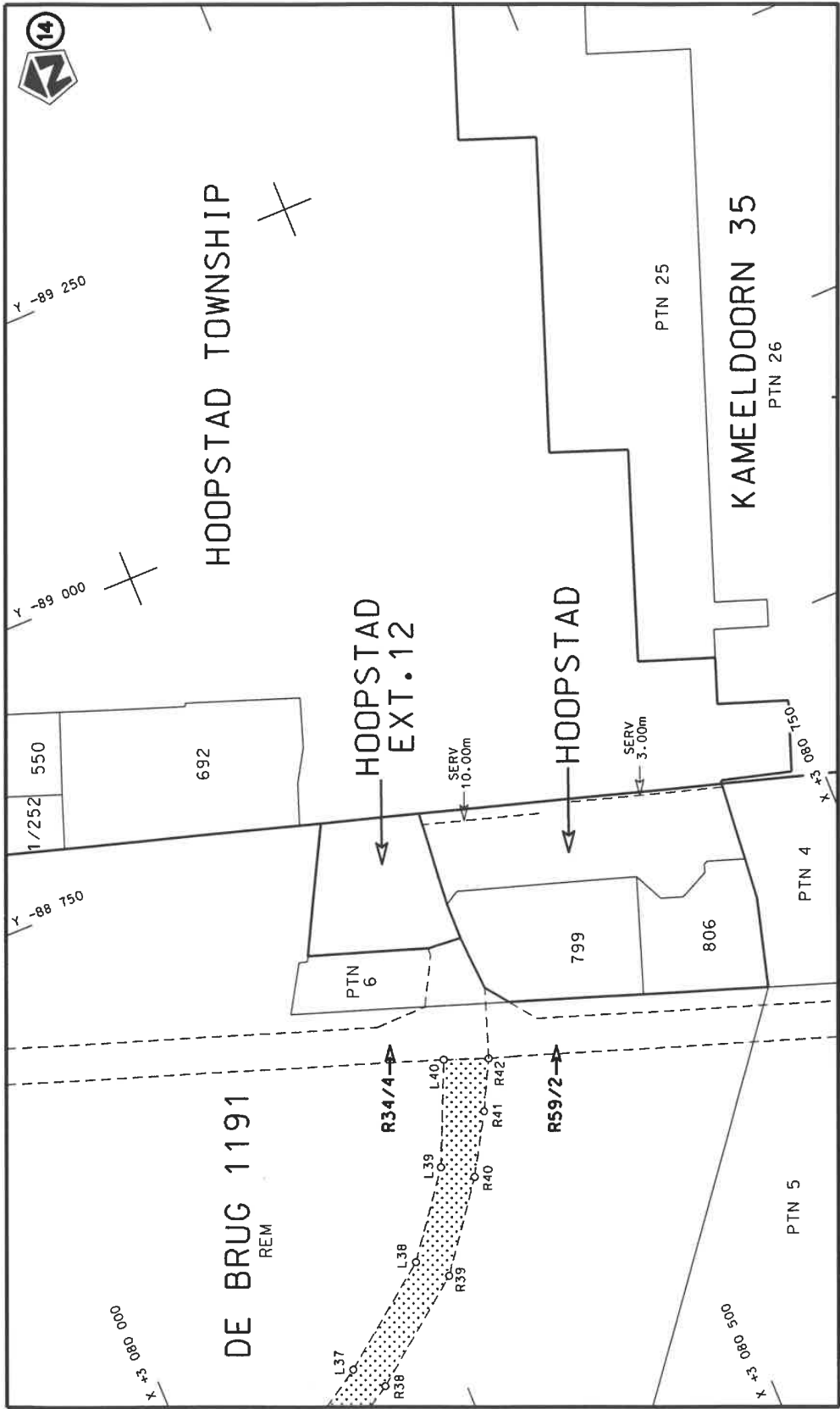
Die Suid Afrikaanse Nasionale Padagentskap MSB Bpk The South African National Roads Agency SOC Ltd	Die figuur getoon The figure shown	stel die padreserwe voor van 'n gedeelte represents the road reserve of a portion van Nasionale Roete of National Route	Vel Sheet 3 van of 7 Plan P1262/25
---	---------------------------------------	--	---



Die Suid Afrikaanse Nasionale Padagentskap MSB Bpk The South African National Roads Agency SOC Ltd	Die figuur getoon The figure shown	 steeldie padreserwe voor van 'n gedeelte represents the road reserve of a portion van Nasionale Roete R34 of National Route	Vel Sheet 4 of 7 Plan P1262/25
---	---------------------------------------	---	-----------------------------------



Die Suid Afrikaanse Nasionale Padagentskap MSB Bpk The South African National Roads Agency SOC Ltd	Die figuur getoon The figure shown	 stel die padreserwe voor van 'n gedeelte represents the road reserve of a portion van Nasionale Roete R34 of National Route	Vel Sheet 5 of 7 Plan P1262/25
---	---------------------------------------	---	--------------------------------------



Die Suid Afrikaanse Nasionale Padagentskap MSB Bpk The South African National Roads Agency SOC Ltd		Die figuur getoon The figure shown		steldie padreserwe voor van 'n gedeelte represents the road reserve of a portion van Nasionale Roete R34 of National Route		Vel Sheet	van 6	of 7
						Plan	P1262/25	
							3	

PADRESERWE KOÖRDINATE / ROAD RESERVE CO-ORDINATES									
LINKERKANT/LEFT HAND SIDE					REGTERKANT/RIGHT HAND SIDE				
	Y	X	WG 25°			Y	X		
L1	-66 807.60	3 058	523.65	R1	-66 822.53	3 058	570.68		
L2	-66 927.91	3 058	528.52	R2	-66 987.45	3 058	579.13		
L3	-67 177.55	3 058	538.61	R3	-67 173.40	3 058	588.65		
L4	-67 482.38	3 058	556.03	R4	-67 843.01	3 058	611.11		
L5	-67 845.56	3 058	579.63	R5	-67 901.70	3 058	617.84		
L6	-68 007.60	3 058	585.69	R6	-69 249.78	3 058	680.06		
L7	-69 253.15	3 058	643.73	R7	-69 457.10	3 058	717.55		
L8	-69 468.41	3 058	667.28	R8	-69 626.28	3 058	787.42		
L9	-69 647.51	3 058	745.57	R9	-69 759.13	3 058	871.64		
L10	-69 780.31	3 058	840.84	R10	-72 380.89	3 061	067.45		
L11	-72 254.29	3 060	913.43	R11	-72 382.84	3 061	064.28		
L12	-72 399.43	3 061	037.30	R12	-72 502.42	3 061	164.41		
L13	-74 550.66	3 062	838.47	R13	-74 526.43	3 062	859.09		
L14	-75 607.72	3 063	723.52	R14	-75 587.50	3 063	747.52		
L15	-77 126.19	3 064	994.89	R15	-77 053.07	3 064	974.63		
L16	-77 327.06	3 065	163.05	R16	-77 297.64	3 065	179.41		
L17	-78 216.40	3 065	907.51	R17	-78 198.33	3 065	933.55		
L18	-79 283.29	3 066	800.97	R18	-79 262.36	3 066	824.45		
L19	-80 117.16	3 067	499.29	R19	-79 908.43	3 067	365.30		
L20	-80 190.29	3 067	564.61	R20	-80 097.11	3 067	523.46		
L21	-80 255.07	3 067	630.03	R21	-80 169.84	3 067	588.39		
L22	-80 315.98	3 067	699.35	R22	-80 232.31	3 067	651.70		
L23	-80 372.57	3 067	772.39	R23	-80 292.68	3 067	720.56		
L24	-80 433.25	3 067	862.00	R24	-80 347.83	3 067	791.61		
L25	-81 591.99	3 069	678.52	R25	-80 411.31	3 067	884.82		
L26	-82 306.30	3 070	798.79	R26	-82 287.84	3 070	827.27		
L27	-82 592.76	3 071	247.89	R27	-82 581.02	3 071	286.99		
L28	-83 252.19	3 072	281.70	R28	-83 242.38	3 072	324.02		
L29	-83 659.82	3 072	920.75	R29	-83 656.01	3 072	972.61		
L30	-84 094.59	3 073	602.36	R30	-84 099.33	3 073	667.74		
L31	-84 498.40	3 074	235.42	R31	-84 497.14	3 074	291.51		
L32	-84 911.36	3 074	882.83	R32	-84 903.19	3 074	928.20		
L33	-85 234.16	3 075	388.26	R33	-85 220.32	3 075	425.47		
L34	-86 296.57	3 077	051.74	R34	-86 282.12	3 077	087.62		
L35	-86 752.83	3 077	770.75	R35	-86 385.57	3 077	254.14		
L36	-87 359.06	3 078	720.94	R36	-86 723.83	3 077	784.40		
L37	-88 278.62	3 080	162.67	R37	-87 340.02	3 078	750.32		
L38	-88 345.16	3 080	250.33	R38	-88 254.18	3 080	183.34		
L39	-88 414.37	3 080	302.98	R39	-88 322.83	3 080	272.80		
L40	-88 501.38	3 080	341.68	R40	-88 395.06	3 080	327.31		
				R41	-88 445.61	3 080	357.28		
				R42	-88 487.19	3 080	379.07		