
GOVERNMENT NOTICES • GOEWERMENTSKENNISGEWINGS

DEPARTMENT OF TRANSPORT

NO. 6690

30 September 2025

**THE SOUTH AFRICAN NATIONAL ROADS
AGENCY SOC LIMITED**Registration No: 1998/009584/30

DECLARATION AMENDMENT OF NATIONAL ROAD R67 SECTION 3

AMENDMENT OF DECLARATION No. 305 OF 2012.

By virtue of section 40(1)(b) of the South African National Roads Agency Limited and the National Roads Act 1998 (Act No. 7 of 1998), I hereby amend Declaration No. 305 of 2012 by substituting paragraph F(II) of the Schedule, being the descriptive declaration of the route from Fort Beaufort up to Seymour, with the accompanying sheets 1 to 22 of Plan No. P1197/20.

(National Road R67 Section 3: Fort Beaufort – Seymour)
MINISTER OF TRANSPORT

DEPARTEMENT VAN VERVOER

NO. 6690

30 September 2025

**DIE SUID-AFRIKAANSE NASIONALE
PADAGENTSKAP MSB BEPERK**

Registrasie No: 1998/009584/30

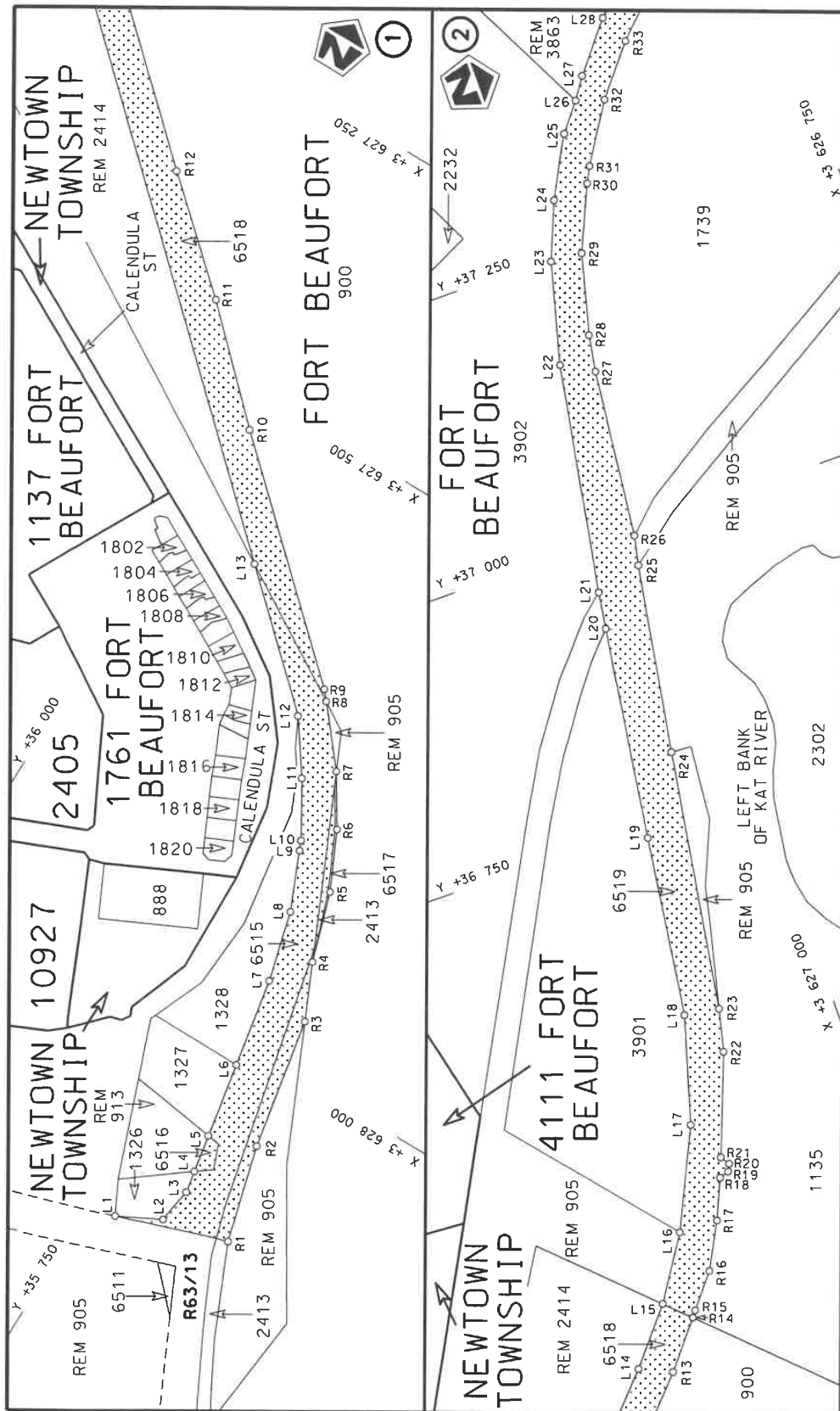
VERKLARING WYSIGING VAN NASIONALE PAD R67 SEKSIE 3

WYSIGING VAN VERKLARING No. 305 VAN 2012.

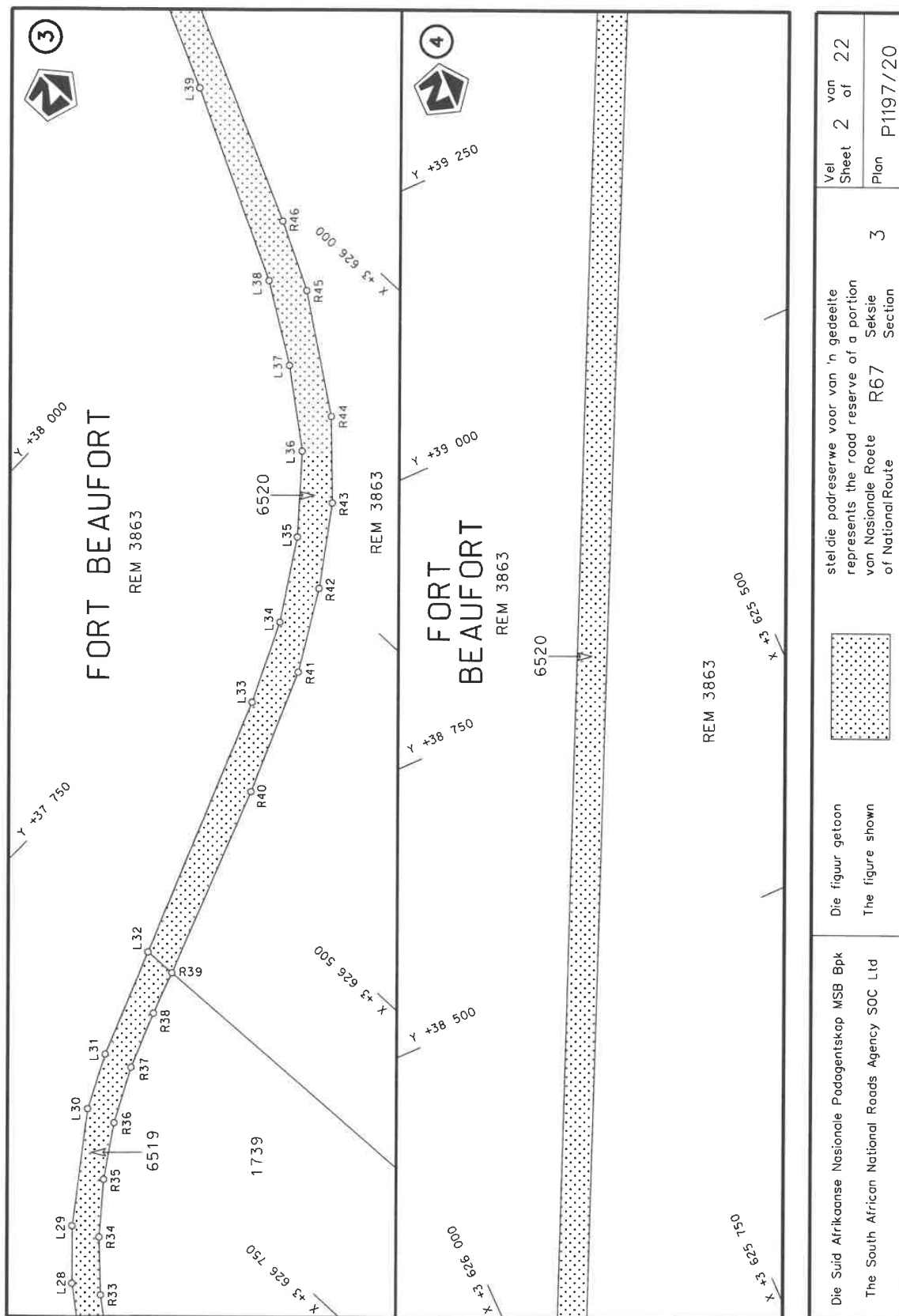
Kragtens Artikel 40(1)(b) van die Suid-Afrikaanse Nasionale Padagentskap Beperk en Nasionale Paaie Wet 1998 (Wet No. 7 van 1998), wysig ek hiermee Verklaring No. 305 van 2012 deur paragraaf F(II) van die Skedule te vervang, synde die gedeelte van die beskrywende verklaring van die pad vanaf Fort Beaufort tot by Seymour, met bygaande velle 1 tot 22 van Plan No. P1197/20.

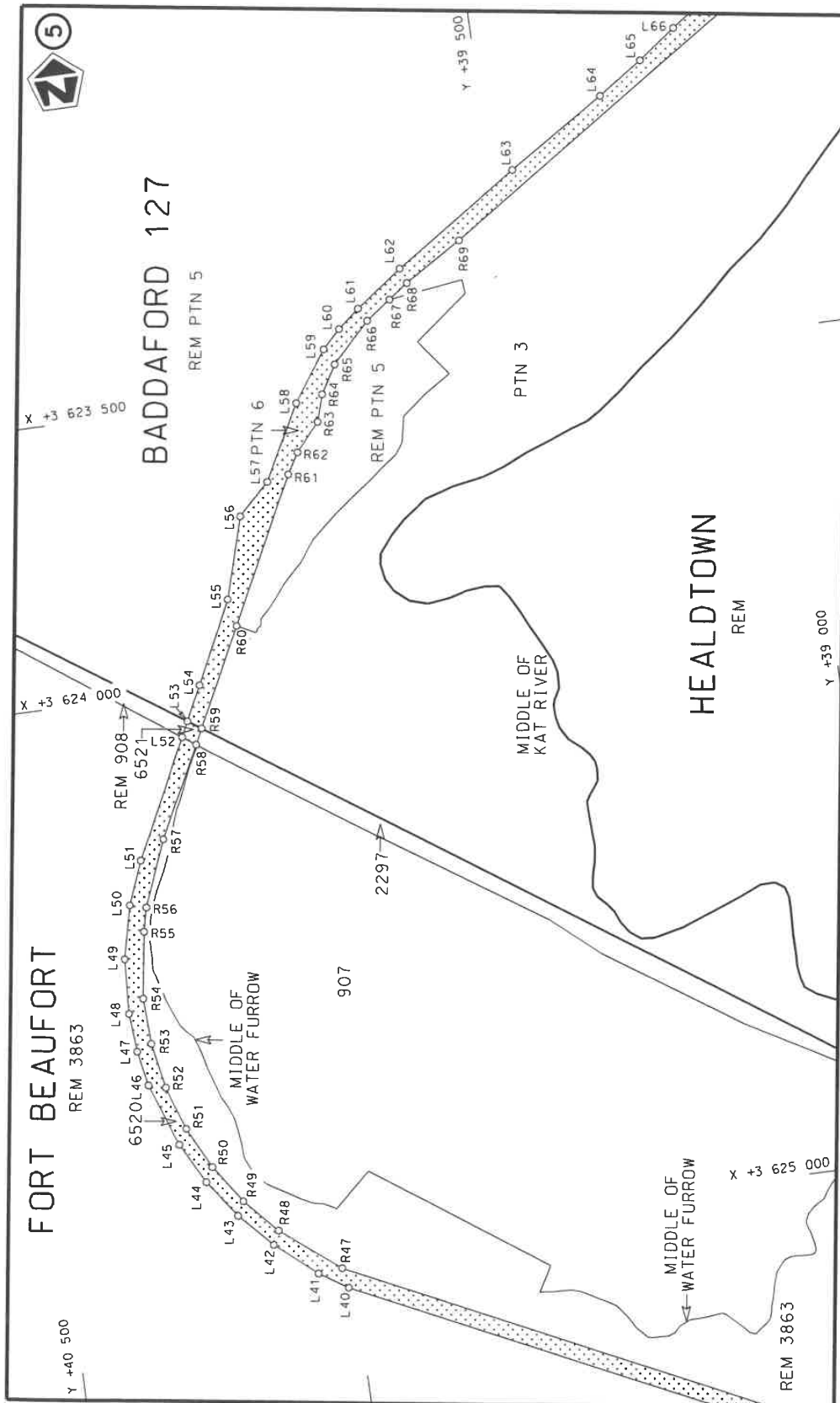
(Nasionale Pad R67 Seksie 3: Fort Beaufort – Seymour)

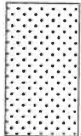

MINISTER VAN VERVOER

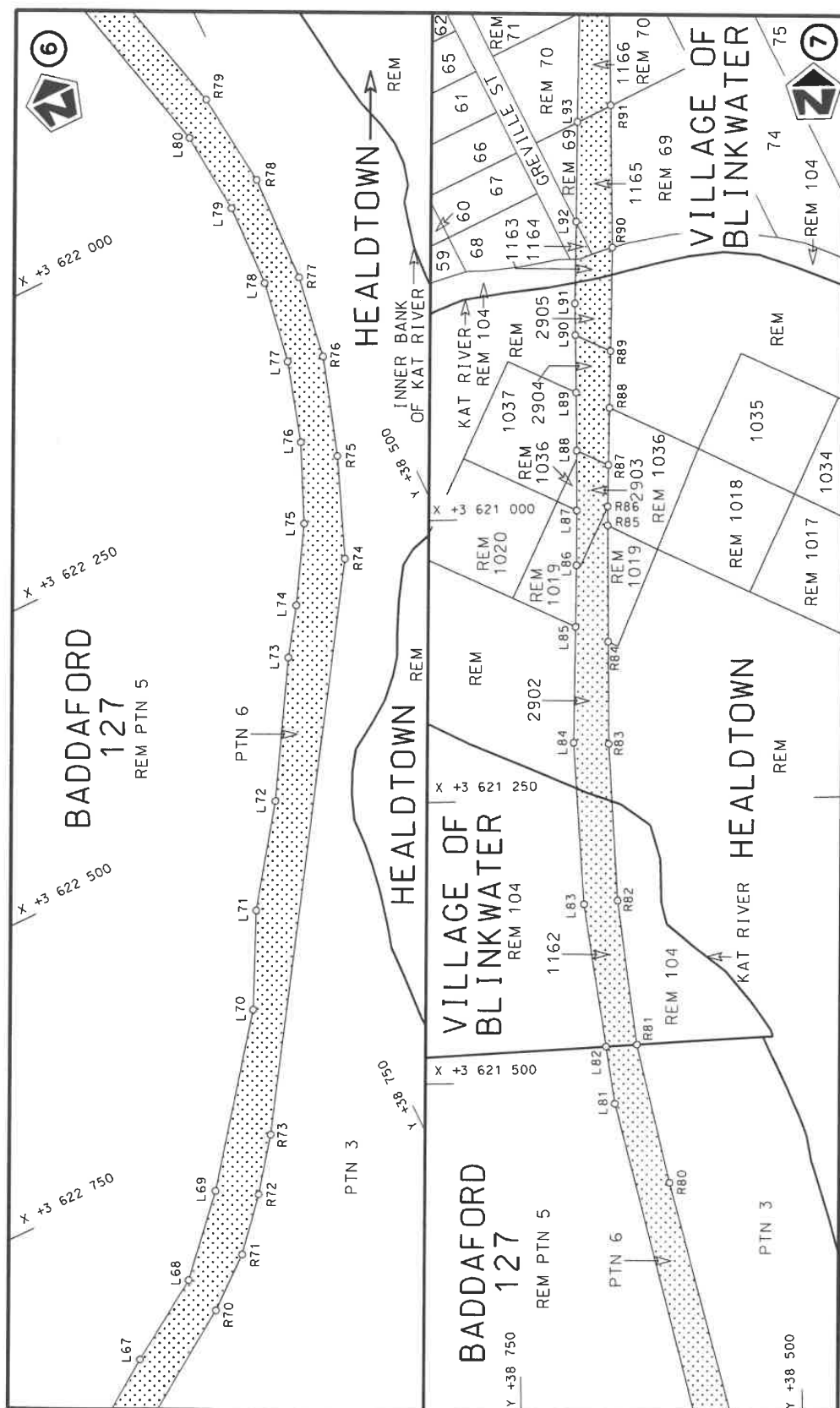



Die Suid Afrikaanse Nasionale Padagentskap MSB Bpk The South African National Roads Agency SOC Ltd	Die figuur getoon The figure shown		stel die padreserwe voor van 'n gedeelte represents the road reserve of a portion van Nasionale Roete R67 Seksie of National Route Section	
			Vel Sheet 1 of 22	Plan P1197/20

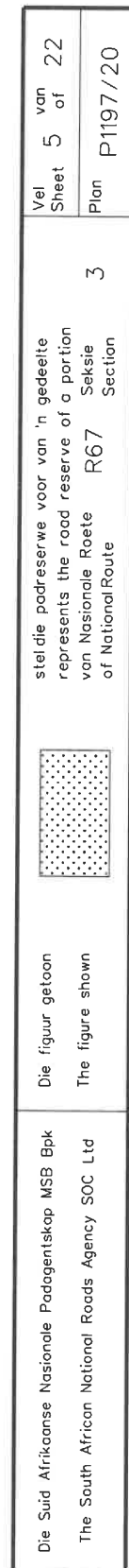


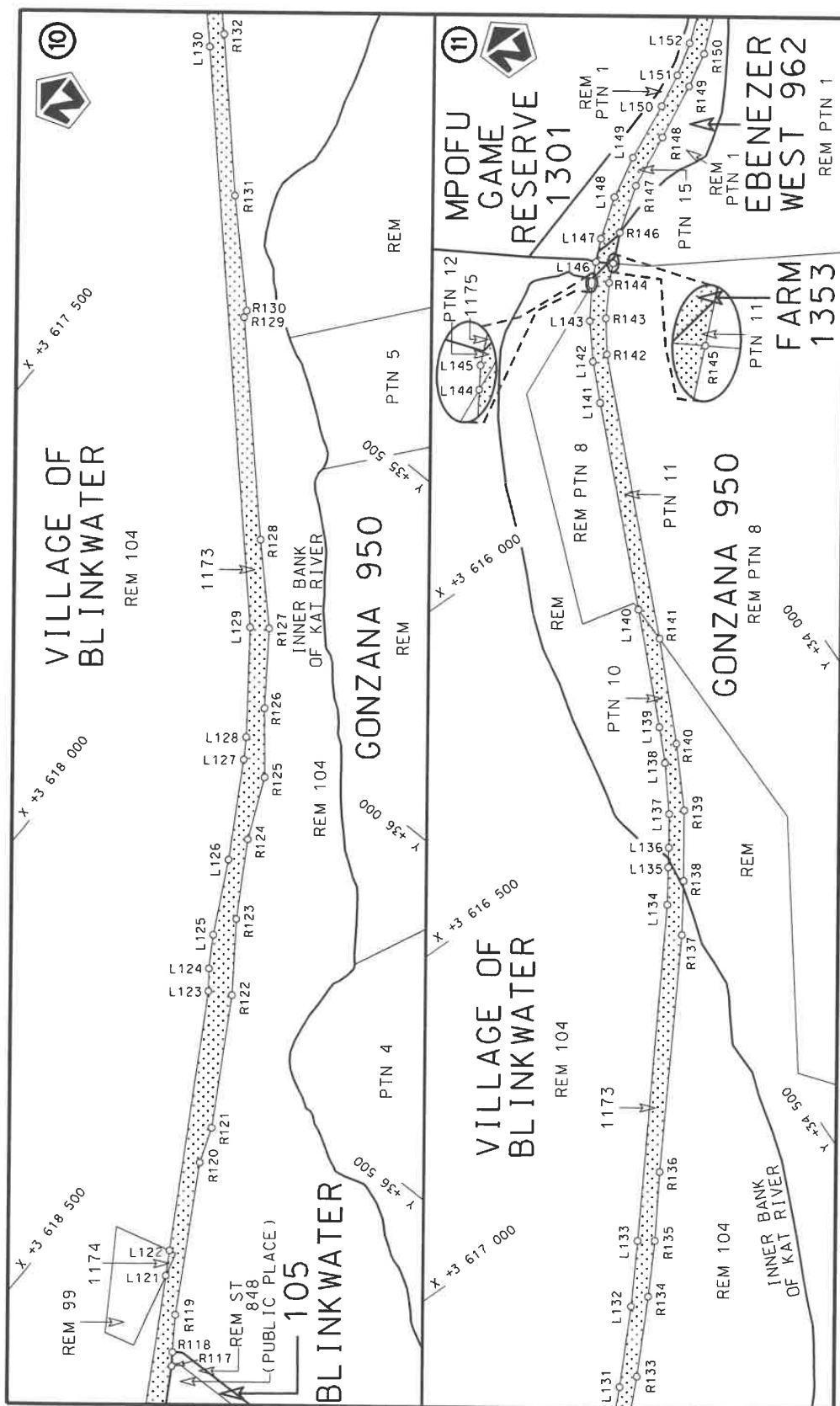


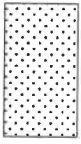
Die Suid Afrikaanse Nasionale Padagentskap MSB Bpk The South African National Roads Agency SOC Ltd	Die figuur getoon The figure shown		steldie podreserwe voor van 'n gedeelte represents the road reserve of a portion van Nasionale Roete of National Route	Vel Sheet 3 of 22
				Plan P1197/20

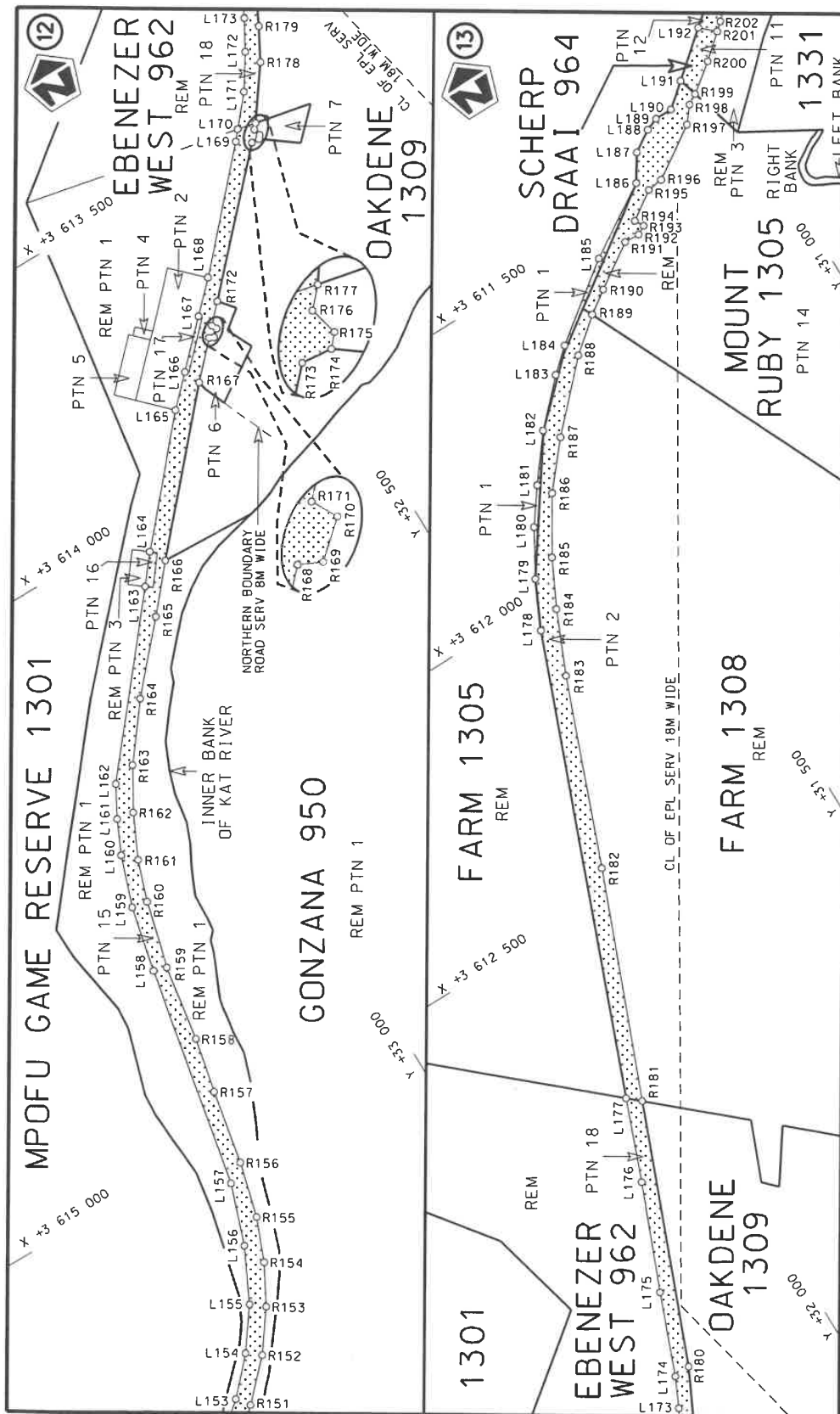


Die Suid Afrikaanse Nasionale Podagentskap MSB Bpk	Die figuur getoon		steldie padreserwe voor van 'n gedeelte represents the road reserve of a portion van Nasionale Roete of National Route	R67	Seksie Section	3	Vel	von
The South African National Roads Agency SOC Ltd	The figure shown						Sheet	4 of

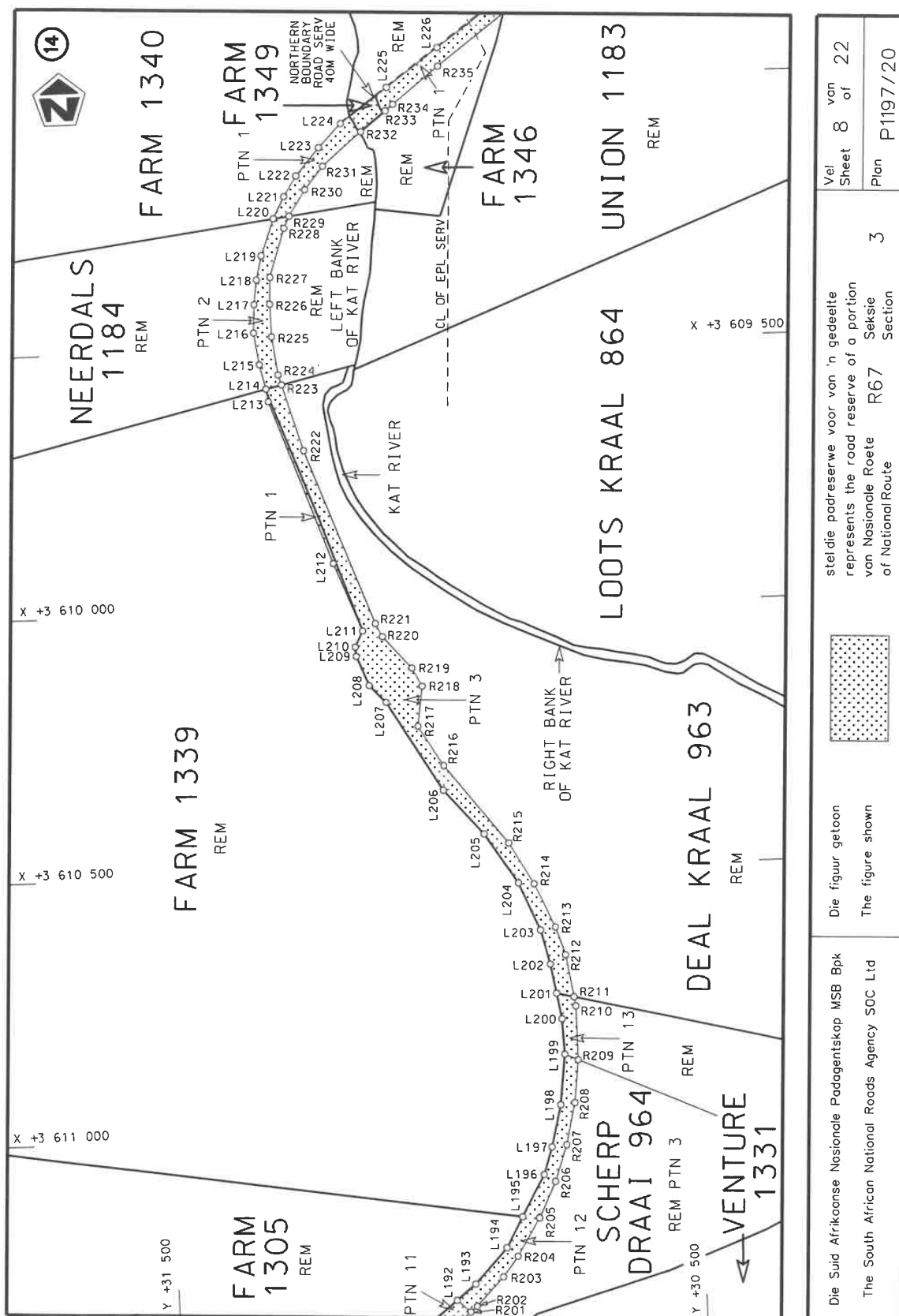


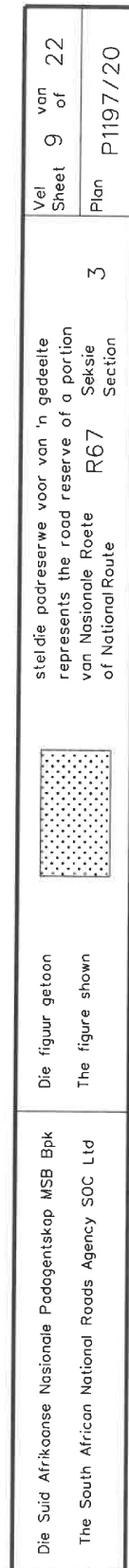


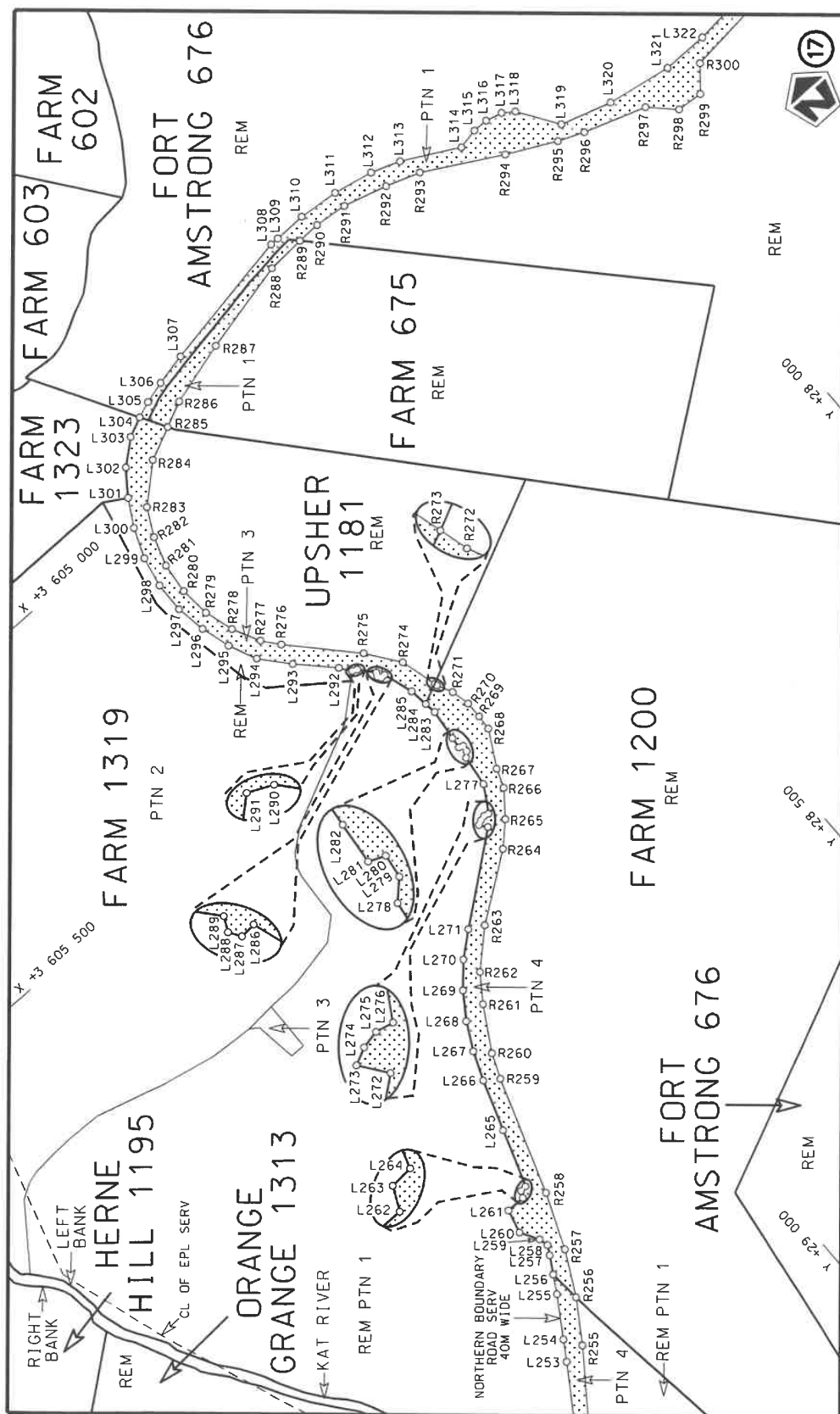
Die Suid Afrikaanse Nasionale Padagentskap MSB Bpk The South African National Roads Agency SOC Ltd	Die figuur getoon The figure shown	 steldie podreserwe voor van 'n gedeelte represents the road reserve of a portion van Nasionale Roete R67 of National Route	Vel Sheet 6 of 22 Plan P1197/20
---	---------------------------------------	--	---------------------------------------



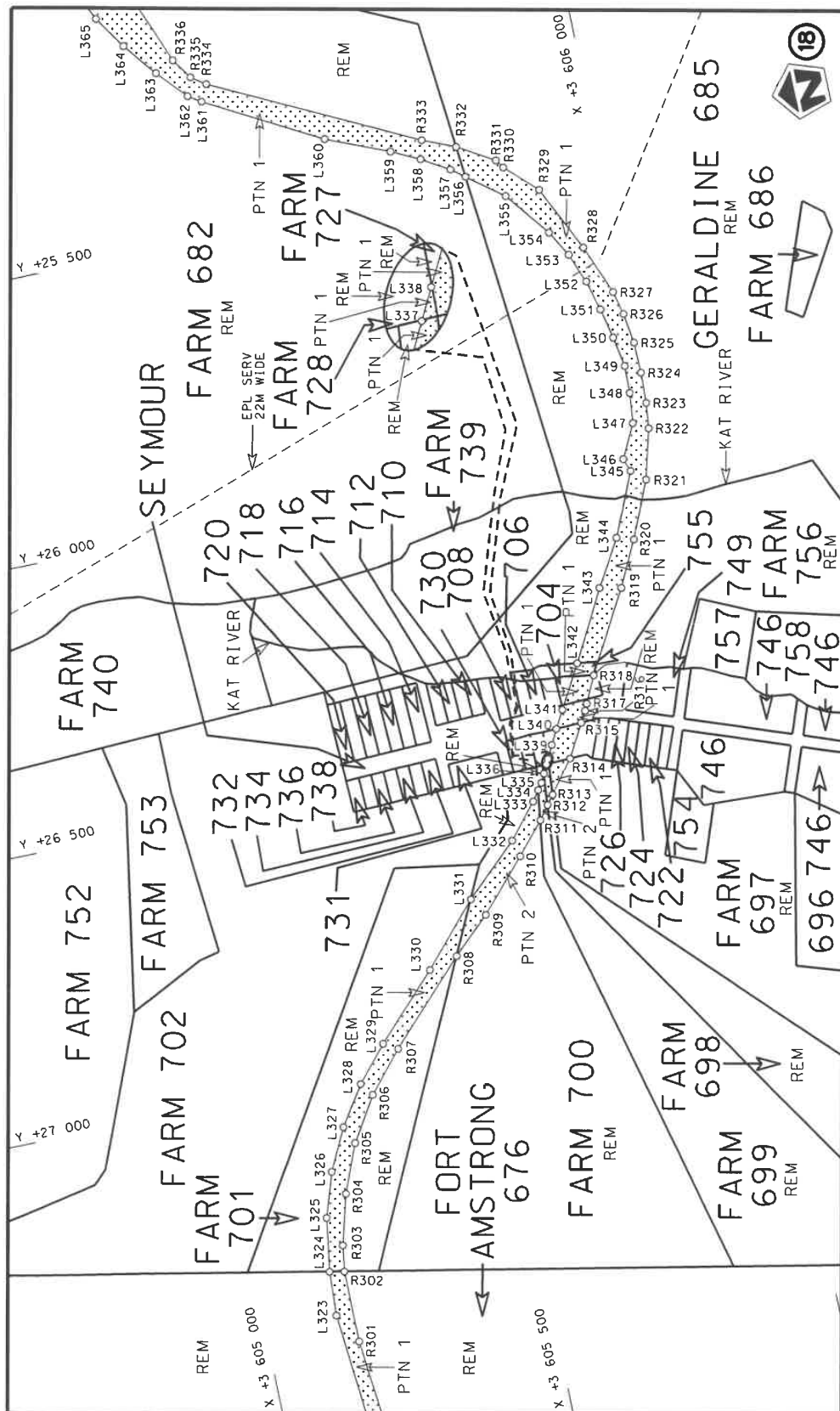
Die Suid Afrikaanse Nasionale Padagentskap MSB Bpk The South African National Roads Agency SOC Ltd	Die figuur getoon The figure shown		steldie podreserwe voor van 'n gedeelte represents the road reserve of a portion van Nasionale Roete R67 of National Route	Vel Sheet	7 of	22
				Plan	P1197/20	








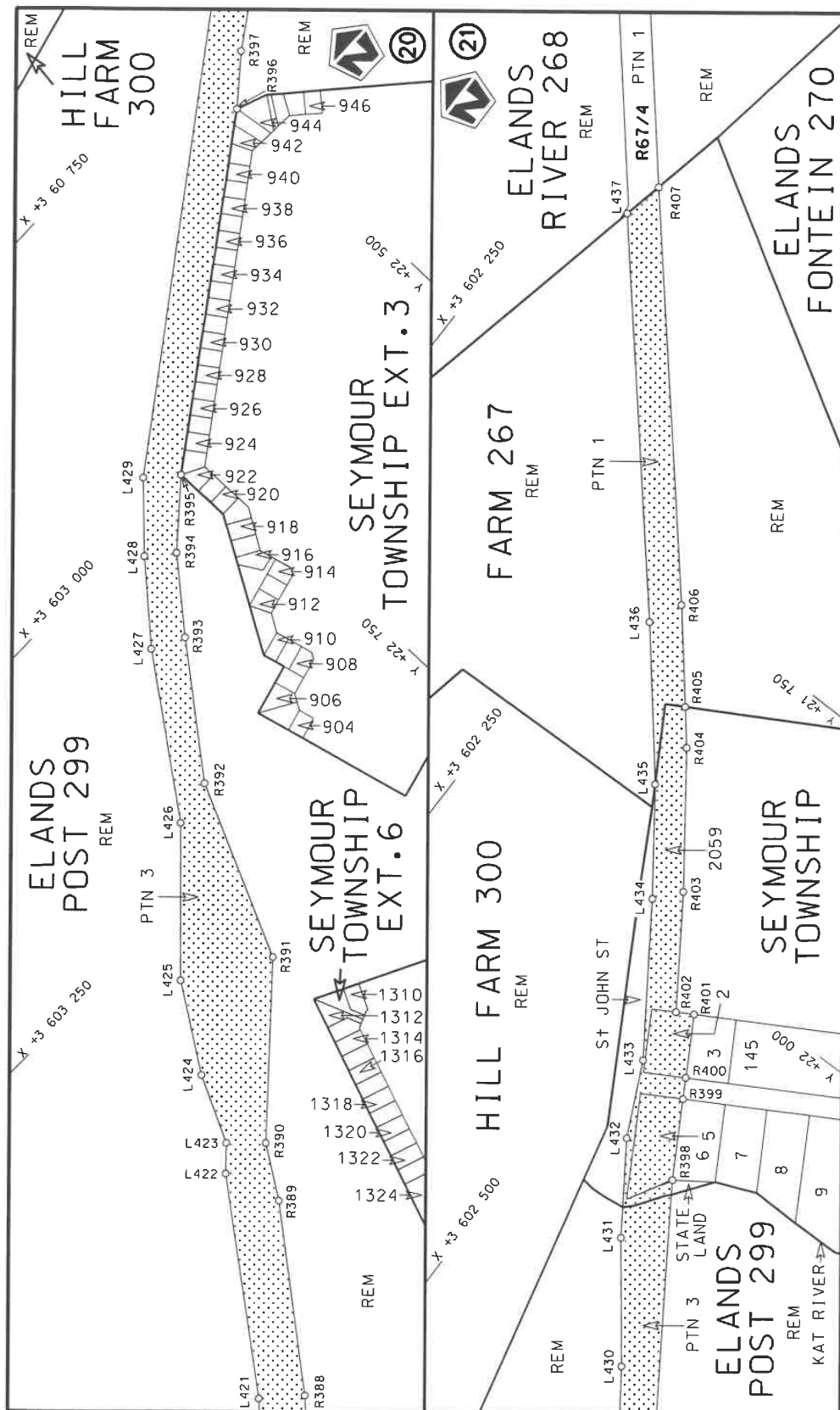
Die Suid Afrikaanse Nasionale Padagentskap WSB Bpk The South African National Roads Agency SOC Ltd	Die figuur getoon The figure shown	steldie padreserwe voor van 'n gedeelte represents the road reserve of a portion van Nasionale Roete R67 Sektie of National Route Section	Vel Sheet 10 of 22 Plan P1197/20
---	---------------------------------------	--	--




Die Suid Afrikaanse Nasionale Padagentskap MSB Bpk The South African National Roads Agency SOC Ltd	Die figuur getoon The figure shown	steldie padreserwe voor van 'n gedeelte represents the road reserve of a portion van Nasionale Roete R67 of National Route R67	Vel Sheet 11 of 22 Plan P1197/20
---	---------------------------------------	---	-------------------------------------



Die Suid Afrikaanse Nasionale Padagentskap MSB Bpk	Die figuur getoon		steldie padreserwe voor van 'n gedeelte represents the road reserve of a portion	van Nasionale Roete R67 of National Route	3	Vel Sheet 12 of 22
The South African National Roads Agency SOC Ltd	The figure shown					Plan P1197/20



Die Suid Afrikaanse Nasionale Podagentskap MSB Bpk	Die figuur getoon		stelde padreserwe voor van 'n gedeelte represents the road reserve of a portion van Nasionale Roete R67 of National Route	3	Vel Sheet	13 of	22
The South African National Roads Agency SOC Ltd	The figure shown				Plan	P1197/20	

PADRESERVE KOÖRDINATE / ROAD RESERVE CO-ORDINATES						
LINKERKANT/LEFT HAND SIDE				REGTERKANT/RIGHT HAND SIDE		
	Y	X	WG 27°		Y	X
L1	35 682.20	3 628 219.97		R1	35 585.80	3 628 188.31
L2	35 644.85	3 628 201.15		R2	35 607.74	3 628 102.95
L3	35 639.75	3 628 169.95		R3	35 628.32	3 627 986.48
L4	35 643.11	3 628 150.49		R4	35 649.85	3 627 937.90
L5	35 648.83	3 628 117.07		R5	35 668.42	3 627 876.88
L6	35 660.25	3 628 050.57		R6	35 691.58	3 627 826.39
L7	35 673.76	3 627 971.91		R7	35 718.62	3 627 782.65
L8	35 689.36	3 627 909.90		R8	35 758.35	3 627 734.42
L9	35 710.44	3 627 859.46		R9	35 765.42	3 627 726.10
L10	35 713.88	3 627 851.22		R10	35 939.96	3 627 563.98
L11	35 741.71	3 627 803.71		R11	36 024.84	3 627 481.05
L12	35 772.97	3 627 758.27		R12	36 112.96	3 627 401.67
L13	35 875.08	3 627 663.12		R13	36 267.62	3 627 257.73
L14	36 280.26	3 627 285.54		R14	36 307.10	3 627 224.98
L15	36 327.61	3 627 246.13		R15	36 312.41	3 627 220.93
L16	36 382.09	3 627 210.69		R16	36 341.21	3 627 197.33
L17	36 468.36	3 627 169.71		R17	36 381.11	3 627 176.03
L18	36 561.82	3 627 142.37		R18	36 415.71	3 627 160.83
L19	36 720.29	3 627 120.37		R19	36 418.41	3 627 152.33
L20	36 906.85	3 627 093.21		R20	36 424.61	3 627 149.13
L21	36 939.12	3 627 088.51		R21	36 432.41	3 627 154.23
L22	37 139.56	3 627 053.52		R22	36 519.71	3 627 120.63
L23	37 228.44	3 627 030.54		R23	36 556.95	3 627 111.65
L24	37 278.38	3 627 010.17		R24	36 784.73	3 627 075.31
L25	37 330.71	3 626 982.09		R25	36 949.93	3 627 047.61
L26	37 354.84	3 626 962.75		R26	36 975.81	3 627 042.11
L27	37 373.58	3 626 950.10		R27	37 123.74	3 627 026.04
L28	37 417.53	3 626 914.44		R28	37 155.92	3 627 020.80
L29	37 454.64	3 626 874.46		R29	37 226.25	3 627 002.70
L30	37 519.66	3 626 782.96		R30	37 282.71	3 626 977.68
L31	37 542.95	3 626 734.01		R31	37 296.48	3 626 970.56
L32	37 579.61	3 626 635.71		R32	37 347.26	3 626 938.53
L33	37 669.94	3 626 395.41		R33	37 389.84	3 626 903.92
L34	37 702.62	3 626 322.02		R34	37 428.39	3 626 864.74
L35	37 745.72	3 626 251.91		R35	37 462.76	3 626 821.84
L36	37 798.13	3 626 189.43		R36	37 492.22	3 626 775.76
L37	37 862.33	3 626 138.41		R37	37 516.55	3 626 726.57
L38	37 931.47	3 626 093.07		R38	37 536.14	3 626 674.73
L39	38 103.81	3 626 004.84		R39	37 549.67	3 626 634.66
L40	40 011.67	3 625 091.85		R40	37 612.77	3 626 458.11
L41	40 061.05	3 625 059.86		R41	37 657.67	3 626 344.80
L42	40 132.26	3 624 998.81		R42	37 697.36	3 626 273.38
L43	40 188.45	3 624 938.99		R43	37 743.62	3 626 205.84
L44	40 236.13	3 624 872.12		R44	37 800.41	3 626 146.60
L45	40 274.80	3 624 799.56		R45	37 898.85	3 626 075.68
L46	40 315.17	3 624 687.47		R46	37 960.38	3 626 043.09
L47	40 326.68	3 624 625.01		R47	40 018.71	3 625 055.92
L48	40 332.09	3 624 556.34		R48	40 120.39	3 624 974.76
L49	40 326.79	3 624 459.01		R49	40 175.33	3 624 914.52
L50	40 304.76	3 624 364.90		R50	40 222.05	3 624 846.87
L51	40 274.52	3 624 288.56		R51	40 258.85	3 624 773.18
				Vel Sheet	14 Van of	22 P1197/20

PADRESERVE KOÖRDINATE / ROAD RESERVE CO-ORDINATES						
LINKERKANT/LEFT HAND SIDE				REGTERKANT/RIGHT HAND SIDE		
	Y	X	WG 27°		Y	X
L52	40 172.49	3 624 080.77		R52	40 285.03	3 624 695.47
L53	40 159.30	3 624 053.90		R53	40 300.26	3 624 614.68
L54	40 129.36	3 623 992.91		R54	40 303.36	3 624 533.04
L55	40 059.32	3 623 848.48		R55	40 286.03	3 624 414.96
L56	40 017.48	3 623 705.01		R56	40 276.38	3 624 372.77
L57	39 961.53	3 623 650.73		R57	40 230.28	3 624 256.25
L58	39 892.18	3 623 518.55		R58	40 149.49	3 624 097.34
L59	39 831.71	3 623 430.24		R59	40 135.89	3 624 069.94
L60	39 800.02	3 623 398.25		R60	40 050.01	3 623 897.26
L61	39 761.89	3 623 366.47		R61	39 923.14	3 623 642.31
L62	39 679.61	3 623 305.77		R62	39 901.70	3 623 605.74
L63	39 458.08	3 623 158.84		R63	39 859.46	3 623 556.67
L64	39 285.89	3 623 049.24		R64	39 845.02	3 623 509.06
L65	39 207.07	3 622 996.26		R65	39 815.94	3 623 459.47
L66	39 141.22	3 622 947.09		R66	39 748.70	3 623 389.86
L67	39 066.65	3 622 895.69		R67	39 704.86	3 623 357.85
L68	38 997.13	3 622 851.07		R68	39 670.43	3 623 332.73
L69	38 940.98	3 622 790.30		R69	39 568.64	3 623 270.06
L70	38 840.31	3 622 660.24		R70	38 987.22	3 622 885.73
L71	38 799.24	3 622 582.22		R71	38 944.33	3 622 851.30
L72	38 741.27	3 622 502.46		R72	38 907.83	3 622 809.86
L73	38 675.10	3 622 393.19		R73	38 875.07	3 622 766.76
L74	38 648.45	3 622 354.59		R74	38 591.51	3 622 336.55
L75	38 610.54	3 622 292.55		R75	38 557.63	3 622 251.68
L76	38 581.47	3 622 226.49		R76	38 530.46	3 622 166.78
L77	38 560.57	3 622 157.03		R77	38 518.96	3 622 094.50
L78	38 548.55	3 622 085.68		R78	38 514.93	3 622 000.33
L79	38 545.77	3 622 013.21		R79	38 523.73	3 621 917.03
L80	38 551.96	3 621 941.04		R80	38 614.63	3 621 553.28
L81	38 662.23	3 621 482.38		R81	38 641.80	3 621 430.20
L82	38 669.25	3 621 431.55		R82	38 656.86	3 621 302.06
L83	38 686.74	3 621 304.90		R83	38 662.76	3 621 162.88
L84	38 693.77	3 621 161.45		R84	38 661.79	3 621 072.21
L85	38 690.49	3 621 058.62		R85	38 660.68	3 620 969.16
L86	38 688.75	3 621 004.02		R86	38 660.50	3 620 952.35
L87	38 687.95	3 620 955.60		R87	38 659.21	3 620 915.61
L88	38 687.06	3 620 902.42		R88	38 657.50	3 620 864.97
L89	38 686.92	3 620 851.04		R89	38 655.80	3 620 814.82
L90	38 686.79	3 620 800.16		R90	38 652.83	3 620 723.02
L91	38 686.71	3 620 772.13		R91	38 652.67	3 620 597.18
L92	38 684.66	3 620 699.60		R92	38 652.56	3 620 507.79
L93	38 682.17	3 620 611.41		R93	38 650.13	3 620 417.26
L94	38 679.61	3 620 520.87		R94	38 647.95	3 620 347.41
L95	38 677.39	3 620 430.41		R95	38 647.36	3 620 328.34
L96	38 675.77	3 620 364.25		R96	38 643.39	3 620 201.28
L97	38 675.31	3 620 345.50		R97	38 622.74	3 620 091.23
L98	38 674.84	3 620 326.22		R98	38 612.05	3 620 063.11
L99	38 672.81	3 620 243.51		R99	38 606.65	3 620 048.69
L100	38 664.47	3 620 166.87		R100	38 596.56	3 620 016.00
L101	38 650.70	3 620 083.06		R101	38 586.27	3 619 985.95
L102	38 650.57	3 620 051.86		R102	38 574.01	3 619 954.58
				Vel Sheet	15 Van of 22	P1197/20

PADRESERVE KOÖRDINATE / ROAD RESERVE CO-ORDINATES							
LINKERKANT/LEFT HAND SIDE				REGTERKANT/RIGHT HAND SIDE			
	Y	X	WG 27°		Y	X	
L103	38 644.52	3 620 035.76		R103	38 560.56	3 619 922.57	
L104	38 634.60	3 620 003.62		R104	38 545.63	3 619 890.79	
L105	38 623.84	3 619 972.18		R105	38 528.58	3 619 858.38	
L106	38 611.08	3 619 939.55		R106	38 477.79	3 619 781.97	
L107	38 597.11	3 619 906.32		R107	38 462.13	3 619 754.38	
L108	38 581.24	3 619 872.56		R108	38 443.71	3 619 730.02	
L109	38 563.80	3 619 839.42		R109	38 424.35	3 619 706.43	
L110	38 549.86	3 619 818.36		R110	38 404.42	3 619 683.62	
L111	38 511.81	3 619 760.88		R111	38 383.60	3 619 661.15	
L112	38 494.35	3 619 730.64		R112	38 368.22	3 619 645.76	
L113	38 475.12	3 619 705.24		R113	38 345.63	3 619 623.13	
L114	38 454.86	3 619 680.60		R114	38 316.93	3 619 600.77	
L115	38 434.16	3 619 656.86		R115	38 190.04	3 619 516.85	
L116	38 412.44	3 619 633.38		R116	37 862.01	3 619 314.96	
L117	38 385.78	3 619 606.73		R117	37 048.23	3 618 837.40	
L118	38 284.71	3 619 528.98		R118	37 028.03	3 618 822.74	
L119	38 036.66	3 619 378.12		R119	36 973.19	3 618 784.54	
L120	37 737.25	3 619 202.68		R120	36 734.83	3 618 647.12	
L121	36 929.78	3 618 727.42		R121	36 673.53	3 618 624.29	
L122	36 890.68	3 618 704.40		R122	36 467.37	3 618 503.11	
L123	36 488.17	3 618 466.44		R123	36 357.07	3 618 423.72	
L124	36 456.15	3 618 441.60		R124	36 233.94	3 618 350.13	
L125	36 404.77	3 618 409.67		R125	36 129.06	3 618 303.72	
L126	36 283.60	3 618 346.22		R126	36 033.94	3 618 225.85	
L127	36 127.83	3 618 254.72		R127	35 918.27	3 618 142.63	
L128	36 094.19	3 618 233.01		R128	35 805.50	3 618 031.01	
L129	35 938.05	3 618 115.21		R129	35 517.22	3 617 758.66	
L130	35 182.96	3 617 407.27		R130	35 505.17	3 617 754.94	
L131	35 110.19	3 617 336.30		R131	35 359.58	3 617 609.47	
L132	35 010.56	3 617 230.15		R132	35 149.57	3 617 413.05	
L133	34 933.43	3 617 141.22		R133	35 074.02	3 617 338.62	
L134	34 546.39	3 616 680.67		R134	34 975.67	3 617 233.40	
L135	34 506.60	3 616 626.95		R135	34 908.66	3 617 158.56	
L136	34 485.79	3 616 598.85		R136	34 831.00	3 617 062.97	
L137	34 450.81	3 616 550.12		R137	34 556.14	3 616 739.67	
L138	34 404.69	3 616 471.54		R138	34 498.09	3 616 662.37	
L139	34 376.23	3 616 413.51		R139	34 425.28	3 616 560.26	
L140	34 286.51	3 616 220.95		R140	34 368.38	3 616 454.92	
L141	34 131.54	3 615 880.35		R141	34 285.90	3 616 285.36	
L142	34 100.14	3 615 812.91		R142	34 072.45	3 615 816.49	
L143	34 063.33	3 615 750.23		R143	34 037.03	3 615 763.15	
L144	34 023.92	3 615 700.01		R144	33 996.01	3 615 714.43	
L145	34 019.64	3 615 694.56		R145	33 970.37	3 615 690.55	
L146	33 994.23	3 615 670.90		R146	33 929.40	3 615 652.40	
L147	33 962.88	3 615 641.71		R147	33 858.13	3 615 600.45	
L148	33 901.03	3 615 595.13		R148	33 770.21	3 615 557.10	
L149	33 833.80	3 615 556.57		R149	33 679.76	3 615 509.99	
L150	33 739.50	3 615 511.09		R150	33 624.77	3 615 478.01	
L151	33 685.72	3 615 482.01		R151	33 569.32	3 615 430.82	
L152	33 635.06	3 615 447.86		R152	33 504.25	3 615 364.61	
L153	33 587.47	3 615 409.86		R153	33 453.64	3 615 294.91	
				Vel Sheet	16	Van of	22
				P1197/20			

PADRESERVE KOÖRDINATE / ROAD RESERVE CO-ORDINATES									
LINKERKANT/LEFT HAND SIDE					REGTERKANT/RIGHT HAND SIDE				
	Y	X	WG 27°		Y	X			
L154	33 527.90	3 615 346.33		R154	33 415.95	3 615 225.87			
L155	33 476.83	3 615 276.25		R155	33 385.78	3 615 150.78			
L156	33 430.75	3 615 182.76		R156	33 360.38	3 615 053.28			
L157	33 393.53	3 615 076.18		R157	33 334.94	3 614 922.31			
L158	33 314.95	3 614 683.86		R158	33 313.58	3 614 825.71			
L159	33 288.94	3 614 568.75		R159	33 291.85	3 614 691.16			
L160	33 257.36	3 614 480.05		R160	33 260.98	3 614 573.95			
L161	33 230.54	3 614 421.85		R161	33 236.19	3 614 502.37			
L162	33 200.18	3 614 367.07		R162	33 200.12	3 614 426.28			
L163	32 975.01	3 614 096.15		R163	33 157.67	3 614 354.21			
L164	32 936.17	3 614 047.87		R164	33 085.04	3 614 260.84			
L165	32 767.59	3 613 857.67		R165	32 986.76	3 614 151.24			
L166	32 718.62	3 613 808.80		R166	32 920.82	3 614 075.27			
L167	32 646.97	3 613 737.03		R167	32 706.61	3 613 837.44			
L168	32 597.43	3 613 687.25		R168	32 651.10	3 613 779.37			
L169	32 431.15	3 613 507.90		R169	32 643.20	3 613 783.00			
L170	32 416.90	3 613 491.09		R170	32 631.13	3 613 772.31			
L171	32 373.67	3 613 440.08		R171	32 635.91	3 613 763.40			
L172	32 335.02	3 613 380.88		R172	32 605.39	3 613 731.43			
L173	32 303.89	3 613 325.81		R173	32 408.05	3 613 523.90			
L174	32 278.96	3 613 274.87		R174	32 393.89	3 613 525.29			
L175	32 222.82	3 613 134.45		R175	32 389.01	3 613 519.78			
L176	32 146.48	3 612 952.29		R176	32 392.43	3 613 506.60			
L177	32 090.92	3 612 811.81		R177	32 384.41	3 613 497.93			
L178	31 777.19	3 612 032.79		R178	32 321.56	3 613 410.78			
L179	31 736.98	3 611 950.51		R179	32 291.33	3 613 354.89			
L180	31 690.30	3 611 871.76		R180	32 249.67	3 613 272.75			
L181	31 646.25	3 611 811.92		R181	32 069.33	3 612 831.26			
L182	31 586.14	3 611 735.74		R182	31 910.42	3 612 444.61			
L183	31 515.18	3 611 664.13		R183	31 782.55	3 612 123.52			
L184	31 474.54	3 611 628.45		R184	31 734.16	3 612 014.81			
L185	31 342.21	3 611 530.59		R185	31 692.26	3 611 933.52			
L186	31 215.69	3 611 452.77		R186	31 631.55	3 611 837.66			
L187	31 186.06	3 611 407.26		R187	31 566.69	3 611 761.73			
L188	31 148.35	3 611 384.06		R188	31 463.28	3 611 656.24			
L189	31 125.83	3 611 375.19		R189	31 404.52	3 611 608.25			
L190	31 094.89	3 611 375.62		R190	31 364.75	3 611 580.78			
L191	31 053.37	3 611 341.64		R191	31 287.34	3 611 530.29			
L192	30 973.80	3 611 276.45		R192	31 260.27	3 611 531.84			
L193	30 934.34	3 611 244.09		R193	31 244.38	3 611 523.45			
L194	30 872.85	3 611 176.84		R194	31 253.02	3 611 507.75			
L195	30 841.36	3 611 119.17		R195	31 203.15	3 611 474.87			
L196	30 798.08	3 611 039.88		R196	31 175.09	3 611 471.16			
L197	30 781.34	3 610 987.82		R197	31 084.81	3 611 413.34			
L198	30 762.16	3 610 908.18		R198	31 062.10	3 611 385.83			
L199	30 751.62	3 610 812.13		R199	31 043.74	3 611 375.23			
L200	30 754.44	3 610 744.62		R200	30 994.20	3 611 338.43			
L201	30 763.31	3 610 695.60		R201	30 948.26	3 611 299.65			
L202	30 773.36	3 610 639.95		R202	30 935.34	3 611 288.74			
L203	30 790.17	3 610 574.53		R203	30 881.48	3 611 232.21			
L204	30 828.96	3 610 483.73		R204	30 852.31	3 611 193.80			
Vel Sheet					17	Van of	22	P1197/20	

PADRESERVE KOÖRDINATE / ROAD RESERVE CO-ORDINATES									
LINKERKANT/LEFT HAND SIDE					REGTERKANT/RIGHT HAND SIDE				
	Y	X	WG 27°			Y	X		
L205	30 891.25	3 610 388.49			R205	30 809.40	3 611 122.01		
L206	30 966.08	3 610 303.16			R206	30 776.69	3 611 053.51		
L207	31 069.07	3 610 132.85			R207	30 753.00	3 610 984.63		
L208	31 100.11	3 610 099.98			R208	30 735.11	3 610 905.01		
L209	31 122.69	3 610 043.88			R209	30 726.36	3 610 823.52		
L210	31 124.16	3 610 026.18			R210	30 727.53	3 610 721.00		
L211	31 109.01	3 609 995.89			R211	30 730.46	3 610 703.50		
L212	31 160.31	3 609 866.32			R212	30 744.02	3 610 623.06		
L213	31 273.55	3 609 555.47			R213	30 761.51	3 610 569.74		
L214	31 277.29	3 609 531.47			R214	30 799.23	3 610 486.19		
L215	31 288.18	3 609 484.82			R215	30 845.43	3 610 407.33		
L216	31 297.00	3 609 424.45			R216	30 963.76	3 610 256.15		
L217	31 294.63	3 609 370.47			R217	31 010.23	3 610 179.95		
L218	31 288.55	3 609 323.82			R218	30 999.78	3 610 103.96		
L219	31 278.30	3 609 278.22			R219	31 018.23	3 610 069.08		
L220	31 253.24	3 609 208.64			R220	31 071.98	3 610 007.69		
L221	31 232.24	3 609 167.27			R221	31 084.51	3 609 982.45		
L222	31 208.13	3 609 128.84			R222	31 209.91	3 609 650.10		
L223	31 163.86	3 609 076.50			R223	31 247.45	3 609 524.30		
L224	31 120.95	3 609 032.12			R224	31 253.16	3 609 505.14		
L225	31 032.23	3 608 966.44			R225	31 263.31	3 609 432.65		
L226	30 934.51	3 608 893.90			R226	31 264.94	3 609 370.76		
L227	30 800.09	3 608 795.56			R227	31 263.01	3 609 319.67		
L228	30 728.61	3 608 738.07			R228	31 233.71	3 609 227.41		
L229	30 665.88	3 608 682.78			R229	31 223.33	3 609 204.65		
L230	30 626.49	3 608 644.35			R230	31 192.24	3 609 155.50		
L231	30 570.67	3 608 584.17			R231	31 157.35	3 609 112.01		
L232	30 510.02	3 608 513.31			R232	31 083.27	3 609 048.88		
L233	30 446.72	3 608 426.18			R233	31 035.79	3 609 010.59		
L234	30 371.35	3 608 304.95			R234	31 021.22	3 608 998.84		
L235	30 329.94	3 608 223.35			R235	30 934.46	3 608 928.87		
L236	30 285.81	3 608 122.56			R236	30 809.57	3 608 834.06		
L237	30 236.21	3 608 005.44			R237	30 720.26	3 608 769.23		
L238	30 216.33	3 607 958.50			R238	30 627.62	3 608 686.06		
L239	30 209.84	3 607 935.65			R239	30 541.77	3 608 595.70		
L240	30 178.76	3 607 862.69			R240	30 463.56	3 608 498.87		
L241	30 170.51	3 607 843.19			R241	30 393.26	3 608 396.06		
L242	30 169.21	3 607 840.13			R242	30 331.44	3 608 287.89		
L243	30 159.60	3 607 817.54			R243	30 291.61	3 608 205.71		
L244	30 140.63	3 607 772.96			R244	30 244.57	3 608 093.45		
L245	30 117.85	3 607 719.41			R245	30 207.75	3 608 005.37		
L246	30 078.69	3 607 641.08			R246	30 148.15	3 607 862.54		
L247	30 016.91	3 607 529.97			R247	30 136.14	3 607 834.05		
L248	29 940.53	3 607 416.52			R248	30 130.44	3 607 820.42		
L249	29 876.84	3 607 325.41			R249	30 103.46	3 607 755.88		
L250	29 765.54	3 607 169.48			R250	30 091.79	3 607 727.96		
L251	29 677.87	3 607 046.59			R251	30 022.83	3 607 588.85		
L252	29 574.27	3 606 903.34			R252	29 985.32	3 607 525.55		
L253	29 478.21	3 606 762.21			R253	29 560.40	3 606 925.49		
L254	29 456.31	3 606 728.71			R254	29 509.50	3 606 853.61		
L255	29 412.02	3 606 660.69			R255	29 438.06	3 606 758.90		
					Vel Sheet	18	Van of 22	P1197/20	

PADRESERVE KOÖRDINATE / ROAD RESERVE CO-ORDINATES									
LINKERKANT/LEFT HAND SIDE					REGTERKANT/RIGHT HAND SIDE				
	Y	X	WG 27°			Y	X		
L256	29 394.11	3 606 630.34		R256	29 390.33	3 606 687.42			
L257	29 376.40	3 606 600.60		R257	29 349.17	3 606 610.39			
L258	29 367.22	3 606 584.69		R258	29 308.18	3 606 513.34			
L259	29 371.41	3 606 567.67		R259	29 235.66	3 606 308.32			
L260	29 389.87	3 606 535.10		R260	29 217.06	3 606 264.45			
L261	29 379.00	3 606 492.96		R261	29 171.69	3 606 188.72			
L262	29 344.98	3 606 492.93		R262	29 138.09	3 606 142.21			
L263	29 339.35	3 606 481.61		R263	29 076.89	3 606 085.70			
L264	29 327.91	3 606 480.84		R264	28 963.59	3 606 005.48			
L265	29 292.37	3 606 379.83		R265	28 925.81	3 605 968.81			
L266	29 260.46	3 606 290.69		R266	28 891.26	3 605 925.03			
L267	29 239.68	3 606 239.95		R267	28 878.45	3 605 891.65			
L268	29 213.86	3 606 191.90		R268	28 842.70	3 605 828.34			
L269	29 182.27	3 606 147.04		R269	28 840.53	3 605 801.67			
L270	29 145.46	3 606 106.65		R270	28 840.32	3 605 771.67			
L271	29 103.51	3 606 071.98		R271	28 847.17	3 605 738.66			
L272	28 958.15	3 605 958.90		R272	28 860.35	3 605 711.05			
L273	28 967.75	3 605 945.76		R273	28 861.50	3 605 706.71			
L274	28 959.62	3 605 941.66		R274	28 878.85	3 605 641.11			
L275	28 950.53	3 605 939.83		R275	28 920.23	3 605 583.66			
L276	28 941.62	3 605 941.76		R276	29 018.60	3 605 476.88			
L277	28 913.72	3 605 896.59		R277	29 041.57	3 605 447.73			
L278	28 906.18	3 605 841.39		R278	29 065.69	3 605 399.18			
L279	28 897.78	3 605 833.16		R279	29 081.15	3 605 347.01			
L280	28 896.16	3 605 822.22		R280	29 085.86	3 605 292.50			
L281	28 903.70	3 605 819.14		R281	29 079.55	3 605 237.68			
L282	28 901.34	3 605 799.69		R282	29 062.41	3 605 186.06			
L283	28 894.59	3 605 743.94		R283	29 036.63	3 605 137.93			
L284	28 897.10	3 605 723.08		R284	28 973.82	3 605 082.29			
L285	28 901.14	3 605 689.55		R285	28 915.72	3 605 056.01			
L286	28 917.80	3 605 636.08		R286	28 870.46	3 605 035.55			
L287	28 925.59	3 605 636.62		R287	28 757.13	3 605 004.26			
L288	28 929.29	3 605 630.81		R288	28 592.21	3 604 966.58			
L289	28 925.80	3 605 623.78		R289	28 523.73	3 604 962.08			
L290	28 947.42	3 605 597.94		R290	28 482.55	3 604 961.12			
L291	28 956.04	3 605 594.00		R291	28 424.30	3 604 967.48			
L292	28 969.80	3 605 574.73		R292	28 346.14	3 604 989.19			
L293	29 026.50	3 605 516.00		R293	28 285.82	3 605 010.31			
L294	29 067.29	3 605 467.25		R294	28 151.09	3 605 085.89			
L295	29 089.70	3 605 417.24		R295	28 065.63	3 605 129.63			
L296	29 104.55	3 605 364.70		R296	28 020.01	3 605 148.45			
L297	29 113.05	3 605 311.04		R297	27 910.00	3 605 186.14			
L298	29 111.48	3 605 256.69		R298	27 868.68	3 605 228.14			
L299	29 099.45	3 605 203.18		R299	27 822.64	3 605 232.14			
L300	29 077.91	3 605 150.90		R300	27 787.39	3 605 190.79			
L301	29 050.56	3 605 104.10		R301	27 460.57	3 605 158.47			
L302	29 018.17	3 605 060.94		R302	27 334.29	3 605 158.43			
L303	28 976.26	3 605 026.14		R303	27 288.31	3 605 165.14			
L304	28 941.39	3 605 010.76		R304	27 200.14	3 605 189.23			
L305	28 912.58	3 604 999.99		R305	27 115.63	3 605 223.74			
L306	28 873.77	3 604 988.99		R306	27 038.63	3 605 271.86			
					Vel Sheet	19	Van of	22	P1197/20

PADRESERWE KOÖRDINATE / ROAD RESERVE CO-ORDINATES							
LINKERKANT/LEFT HAND SIDE				REGTERKANT/RIGHT HAND SIDE			
	Y	X	WG 27°		Y	X	
L307	28 816.33	3 604 977.23		R307	26 968.25	3 605 332.54	
L308	28 565.65	3 604 934.08		R308	26 828.95	3 605 466.62	
L309	28 550.16	3 604 933.71		R309	26 768.01	3 605 531.22	
L310	28 493.25	3 604 932.36		R310	26 678.99	3 605 611.74	
L311	28 421.30	3 604 939.45		R311	26 623.95	3 605 659.24	
L312	28 350.18	3 604 953.96		R312	26 600.35	3 605 677.34	
L313	28 298.95	3 604 972.52		R313	26 584.22	3 605 689.71	
L314	28 201.32	3 605 025.31		R314	26 528.12	3 605 732.72	
L315	28 164.40	3 605 018.13		R315	26 470.16	3 605 765.02	
L316	28 137.26	3 605 018.51		R316	26 450.80	3 605 775.81	
L317	28 107.97	3 605 026.29		R317	26 439.28	3 605 781.12	
L318	28 087.83	3 605 040.45		R318	26 392.67	3 605 803.36	
L319	28 041.71	3 605 111.19		R319	26 251.72	3 605 882.58	
L320	27 950.64	3 605 139.54		R320	26 172.63	3 605 922.20	
L321	27 835.72	3 605 159.67		R321	26 073.85	3 605 964.95	
L322	27 754.43	3 605 159.36		R322	25 986.15	3 605 988.09	
L323	27 407.31	3 605 128.65		R323	25 941.37	3 605 992.80	
L324	27 329.25	3 605 132.78		R324	25 887.20	3 605 994.53	
L325	27 234.95	3 605 147.08		R325	25 833.12	3 605 993.43	
L326	27 157.06	3 605 172.64		R326	25 779.67	3 605 985.34	
L327	27 083.88	3 605 209.19		R327	25 738.17	3 605 975.28	
L328	27 015.57	3 605 254.71		R328	25 650.64	3 605 939.92	
L329	26 954.01	3 605 308.31		R329	25 535.40	3 605 884.80	
L330	26 843.29	3 605 415.72		R330	25 484.04	3 605 831.16	
L331	26 735.88	3 605 511.35		R331	25 469.11	3 605 821.08	
L332	26 649.12	3 605 603.49		R332	25 431.53	3 605 757.95	
L333	26 589.07	3 605 653.81		R333	25 407.53	3 605 701.25	
L334	26 570.99	3 605 666.60		R334	25 233.39	3 605 349.69	
L335	26 559.66	3 605 674.62		R335	25 216.17	3 605 324.88	
L336	26 544.81	3 605 682.26		R336	25 180.51	3 605 300.75	
L337	26 529.77	3 605 689.99		R337	25 048.49	3 605 248.18	
L338	26 520.95	3 605 694.54		R338	24 984.44	3 605 233.52	
L339	26 498.55	3 605 706.10		R339	24 946.95	3 605 232.66	
L340	26 471.91	3 605 719.85		R340	24 895.60	3 605 240.71	
L341	26 440.99	3 605 737.14		R341	24 824.12	3 605 276.92	
L342	26 366.12	3 605 779.49		R342	24 669.10	3 605 383.24	
L343	26 244.07	3 605 845.12		R343	24 606.11	3 605 418.75	
L344	26 163.56	3 605 892.69		R344	24 475.42	3 605 501.71	
L345	26 053.07	3 605 941.13		R345	24 319.04	3 605 614.38	
L346	26 030.16	3 605 932.63		R346	24 237.93	3 605 660.51	
L347	25 971.55	3 605 962.44		R347	24 191.50	3 605 686.92	
L348	25 918.25	3 605 967.89		R348	24 143.48	3 605 711.46	
L349	25 869.84	3 605 968.66		R349	24 090.23	3 605 718.50	
L350	25 816.87	3 605 959.18		R350	24 035.64	3 605 720.44	
L351	25 763.57	3 605 947.10		R351	23 981.19	3 605 713.70	
L352	25 710.18	3 605 932.58		R352	23 927.87	3 605 702.16	
L353	25 657.89	3 605 912.25		R353	23 844.19	3 605 663.09	
L354	25 612.73	3 605 886.37		R354	23 809.42	3 605 621.34	
L355	25 534.12	3 605 825.15		R355	23 779.63	3 605 577.40	
L356	25 486.39	3 605 763.13		R356	23 758.98	3 605 526.84	
L357	25 468.63	3 605 740.04		R357	23 742.79	3 605 483.42	
				Vel Sheet	20	Van of	22
				P1197/20			

PADRESERVE KOÖRDINATE / ROAD RESERVE CO-ORDINATES							
LINKERKANT/LEFT HAND SIDE				REGTERKANT/RIGHT HAND SIDE			
	Y	X	WG 27°		Y	X	
L358	25 440.08	3 605 692.63		R358	23 728.55	3 605 435.98	
L359	25 416.09	3 605 643.31		R359	23 721.27	3 605 382.29	
L360	25 371.03	3 605 533.99		R360	23 730.54	3 605 298.78	
L361	25 262.08	3 605 335.29		R361	23 747.42	3 605 246.67	
L362	25 247.44	3 605 313.12		R362	23 767.62	3 605 195.57	
L363	25 196.77	3 605 266.83		R363	23 821.33	3 605 033.52	
L364	25 138.68	3 605 221.02		R364	23 899.06	3 604 853.74	
L365	25 069.56	3 605 175.02		R365	23 937.17	3 604 793.31	
L366	25 054.47	3 605 171.93		R366	23 994.82	3 604 657.54	
L367	25 019.19	3 605 175.45		R367	24 004.15	3 604 641.70	
L368	24 988.56	3 605 178.51		R368	24 027.17	3 604 584.79	
L369	24 891.66	3 605 204.79		R369	24 048.84	3 604 520.72	
L370	24 833.33	3 605 232.89		R370	24 055.86	3 604 439.30	
L371	24 583.23	3 605 398.48		R371	24 052.65	3 604 357.37	
L372	24 250.11	3 605 599.38		R372	24 043.48	3 604 275.42	
L373	24 219.72	3 605 620.87		R373	24 024.15	3 604 196.63	
L374	24 206.11	3 605 630.49		R374	23 984.04	3 604 125.37	
L375	24 159.77	3 605 657.05		R375	23 955.66	3 604 065.06	
L376	24 108.73	3 605 675.70		R376	23 918.01	3 604 014.18	
L377	24 072.73	3 605 676.64		R377	23 861.10	3 603 953.69	
L378	24 018.45	3 605 670.30		R378	23 847.10	3 603 943.50	
L379	23 966.17	3 605 657.95		R379	23 753.85	3 603 908.97	
L380	23 926.71	3 605 635.77		R380	23 622.91	3 603 827.01	
L381	23 825.61	3 605 554.77		R381	23 530.65	3 603 804.90	
L382	23 789.96	3 605 514.33		R382	23 481.97	3 603 793.23	
L383	23 766.00	3 605 465.09		R383	23 429.62	3 603 778.39	
L384	23 755.23	3 605 411.90		R384	23 377.55	3 603 761.10	
L385	23 753.35	3 605 357.14		R385	23 329.34	3 603 737.96	
L386	23 760.36	3 605 300.17		R386	23 283.00	3 603 709.05	
L387	23 786.67	3 605 233.14		R387	23 241.95	3 603 673.65	
L388	23 829.19	3 605 153.73		R388	23 203.72	3 603 634.14	
L389	23 906.94	3 604 989.96		R389	23 093.72	3 603 499.28	
L390	23 947.44	3 604 879.03		R390	23 064.52	3 603 455.78	
L391	23 956.00	3 604 842.69		R391	22 940.38	3 603 347.58	
L392	24 040.86	3 604 642.02		R392	22 869.73	3 603 198.13	
L393	24 057.27	3 604 588.48		R393	22 787.83	3 603 097.30	
L394	24 105.31	3 604 590.13		R394	22 738.50	3 603 040.44	
L395	24 134.69	3 604 583.96		R395	22 685.59	3 602 996.11	
L396	24 159.03	3 604 565.98		R396	22 417.01	3 602 810.35	
L397	24 175.00	3 604 540.00		R397	22 377.39	3 602 777.78	
L398	24 179.59	3 604 509.56		R398	22 179.44	3 602 646.77	
L399	24 179.48	3 604 478.60		R399	22 116.79	3 602 610.50	
L400	24 158.28	3 604 439.95		R400	22 100.41	3 602 601.06	
L401	24 127.14	3 604 416.27		R401	22 051.26	3 602 572.83	
L402	24 091.07	3 604 444.57		R402	22 059.41	3 602 558.80	
L403	24 095.00	3 604 398.88		R403	21 971.06	3 602 499.24	
L404	24 089.56	3 604 316.85		R404	21 868.06	3 602 424.15	
L405	24 076.31	3 604 264.53		R405	21 840.25	3 602 401.12	
L406	24 031.74	3 604 125.98		R406	21 770.86	3 602 343.74	
L407	24 032.05	3 604 106.74		R407	21 490.22	3 602 103.02	
L408	23 996.85	3 604 069.57					
				Vel Sheet	21	Van of	22
				P1197/20			

This gazette is also available free online at www.gpwonline.co.za