
GOVERNMENT NOTICES • GOEWERMENTSKENNISGEWINGS

DEPARTMENT OF TRANSPORT

NO. 6689

30 September 2025

**THE SOUTH AFRICAN NATIONAL ROADS
AGENCY SOC LIMITED**Registration No: 1998/009584/30

DECLARATION AMENDMENT OF NATIONAL ROAD R67 SECTION 4

AMENDMENT OF DECLARATION No. 305 OF 2012.

By virtue of section 40(1)(b) of the South African National Roads Agency Limited and the National Roads Act 1998 (Act No. 7 of 1998), I hereby amend Declaration No. 305 of 2012 by substituting paragraph F(III) of the Schedule, being the descriptive declaration of the route from Seymour up to Whittlesea, with the accompanying sheets 1 to 25 of Plan No. P1217/20.

(National Road R67 Section 4: Seymour – Whittlesea)
MINISTER OF TRANSPORT

DEPARTEMENT VAN VERVOER

NO. 6689

30 September 2025

**DIE SUID-AFRIKAANSE NASIONALE
PADAGENTSAP MSB BEPERK**

Registrasie No: 1998/009584/30

VERKLARING WYSIGING VAN NASIONALE PAD R67 SEKSIE 4

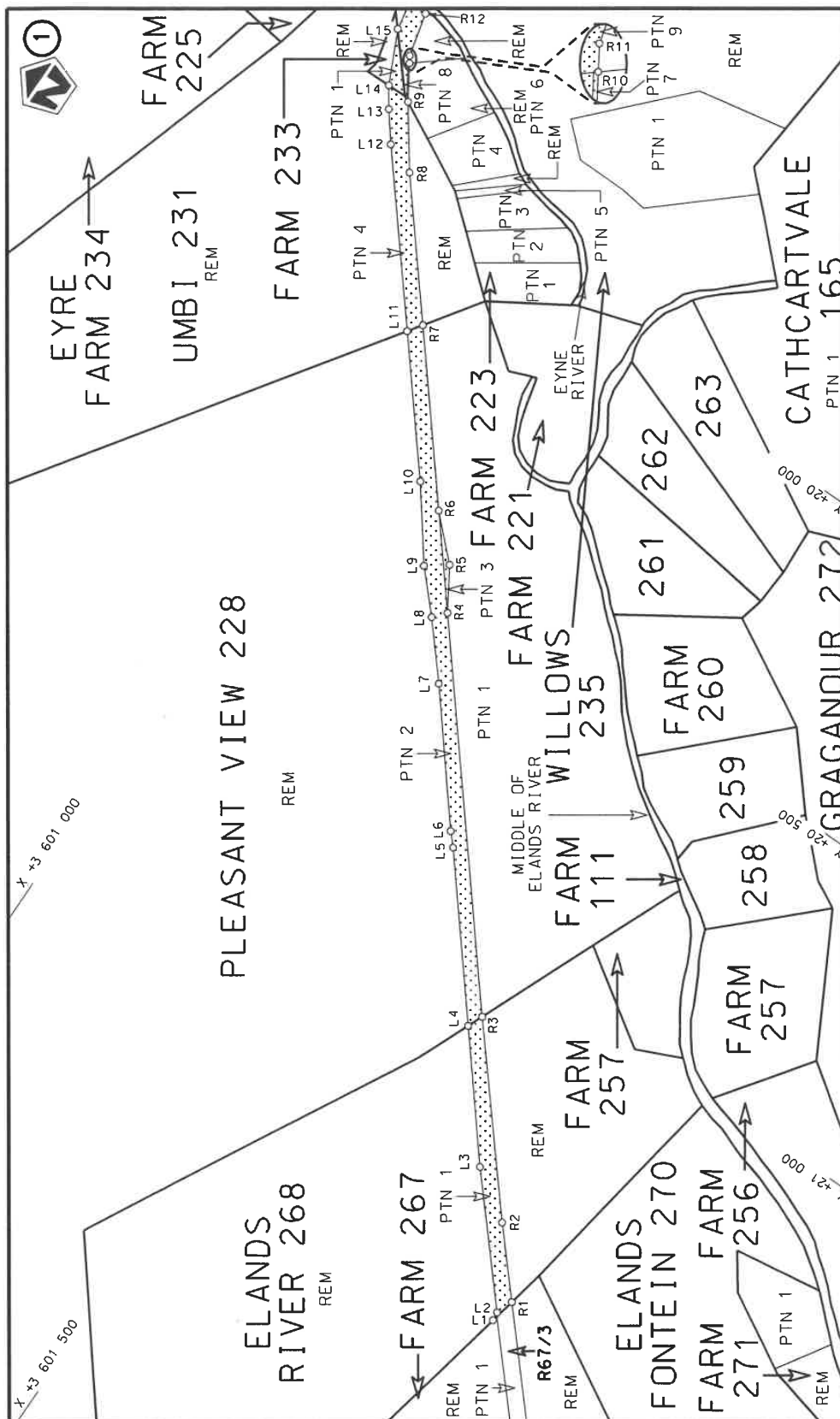
WYSIGING VAN VERKLARING No. 305 VAN 2012.


Kragtens Artikel 40(1)(b) van die Suid-Afrikaanse Nasionale Padagentskap Beperk en Nasionale Paaie Wet 1998 (Wet No. 7 van 1998), wysig ek hiermee Verklaring No. 305 van 2012 deur paragraaf F(III) van die Skedule te vervang, synde die gedeelte van die beskrywende verklaring van die pad vanaf Seymour tot by Whittlesea, met bygaande velle 1 tot 25 van Plan No. P1217/20.

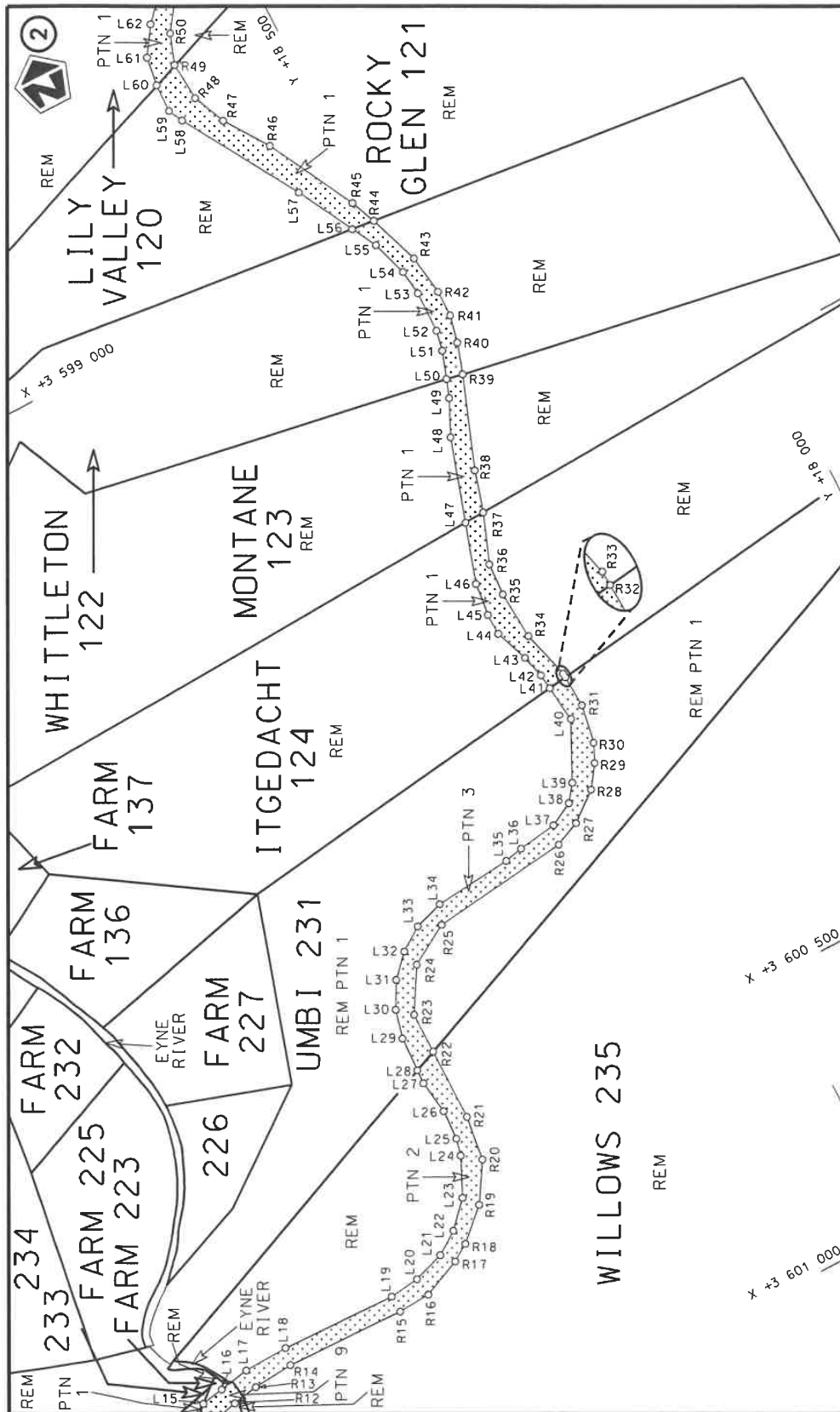
(Nasionale Pad R67 Seksie 4: Seymour – Whittlesea)




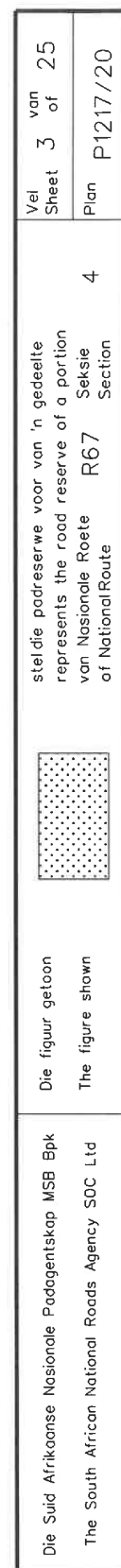
MINISTER VAN VERVOER

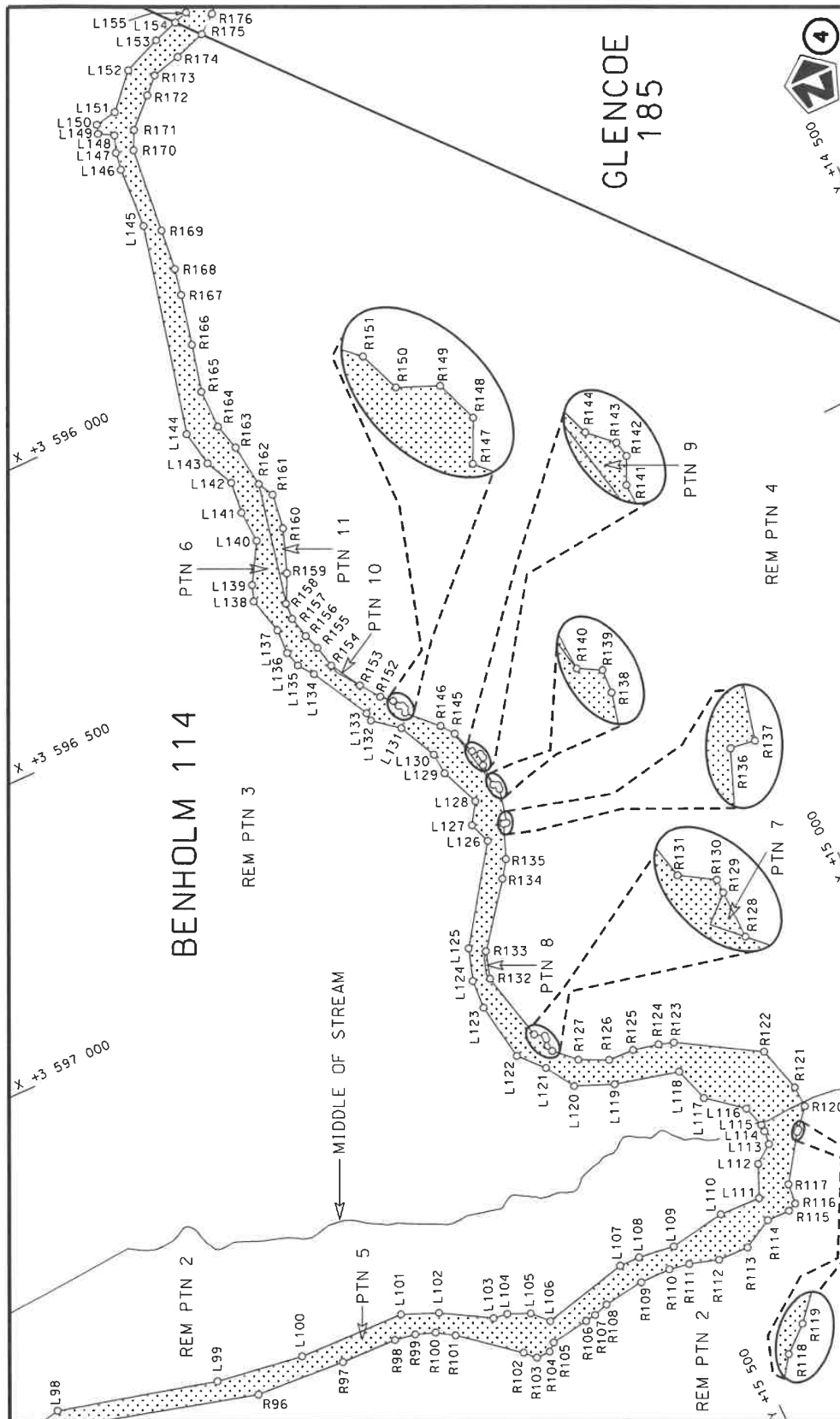


| | | | | | | | |
|--|-------------------|--|--|--|--------------|---------|----------|
| Die Suid Afrikaanse Nasionale Padagentskap MSB Bpk | Die figuur getoon |  | stel die padreserwe voor van 'n gedeelte represents the road reserve of a portion | van Nasionale Roete R67 of National Route | Vel Sheet | 1 of | 25 |
| The South African National Roads Agency SOC Ltd | The figure shown | | | | 4 | Plan | P1217/20 |

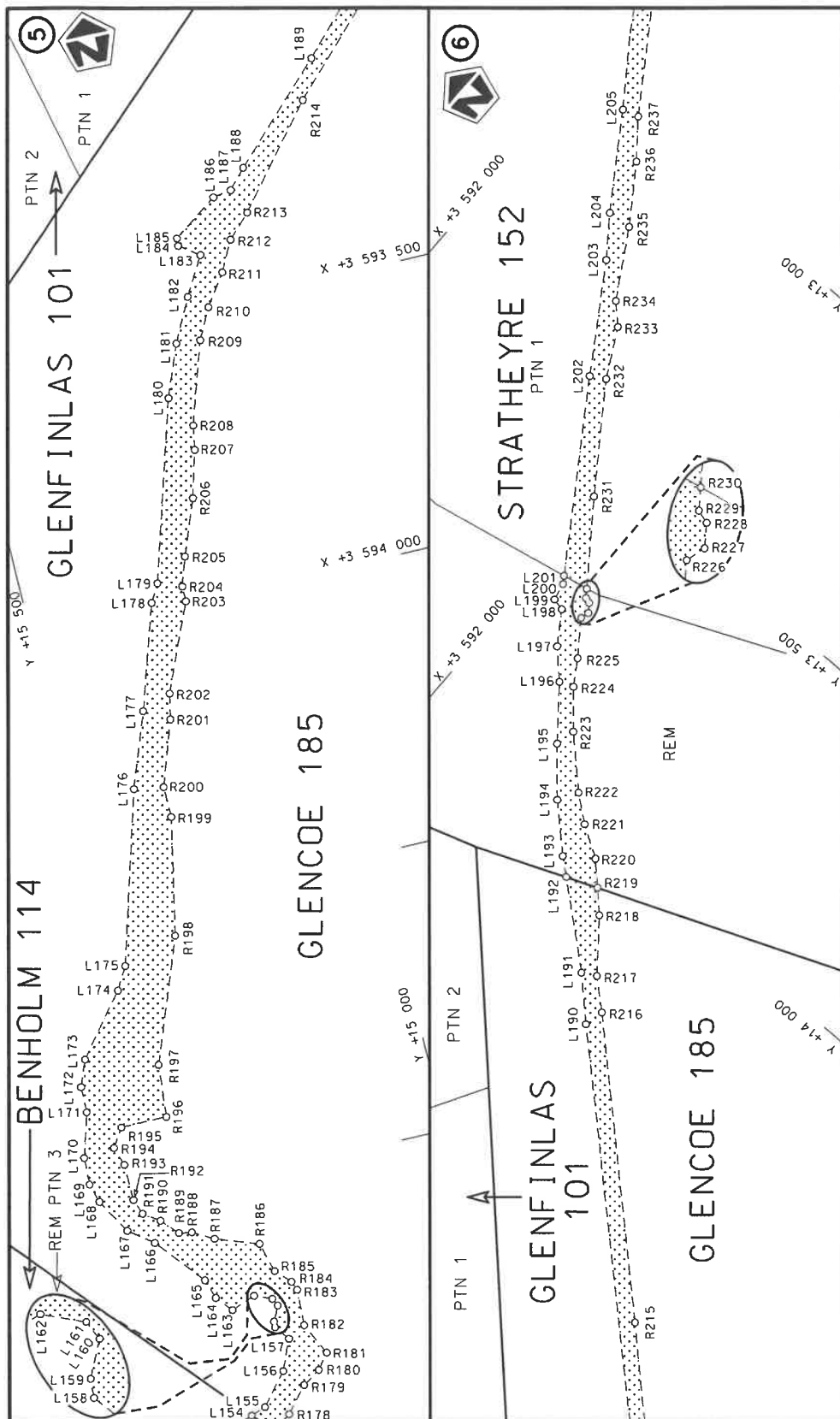


| | | | | |
|---|---------------------------------------|---|---|---------------------------------------|
| Die Suid Afrikaanse Nasionale Padagentskap MSB Bpk The South African National Roads Agency SOC Ltd | Die figuur getoon The figure shown |  | steldie padreserwe voor van 'n gedeelte represents the road reserve of a portion van Nasionale Roete of National Route | Vel Sheet 2 of 25 Plan P1217/20 |
|---|---------------------------------------|---|---|---------------------------------------|

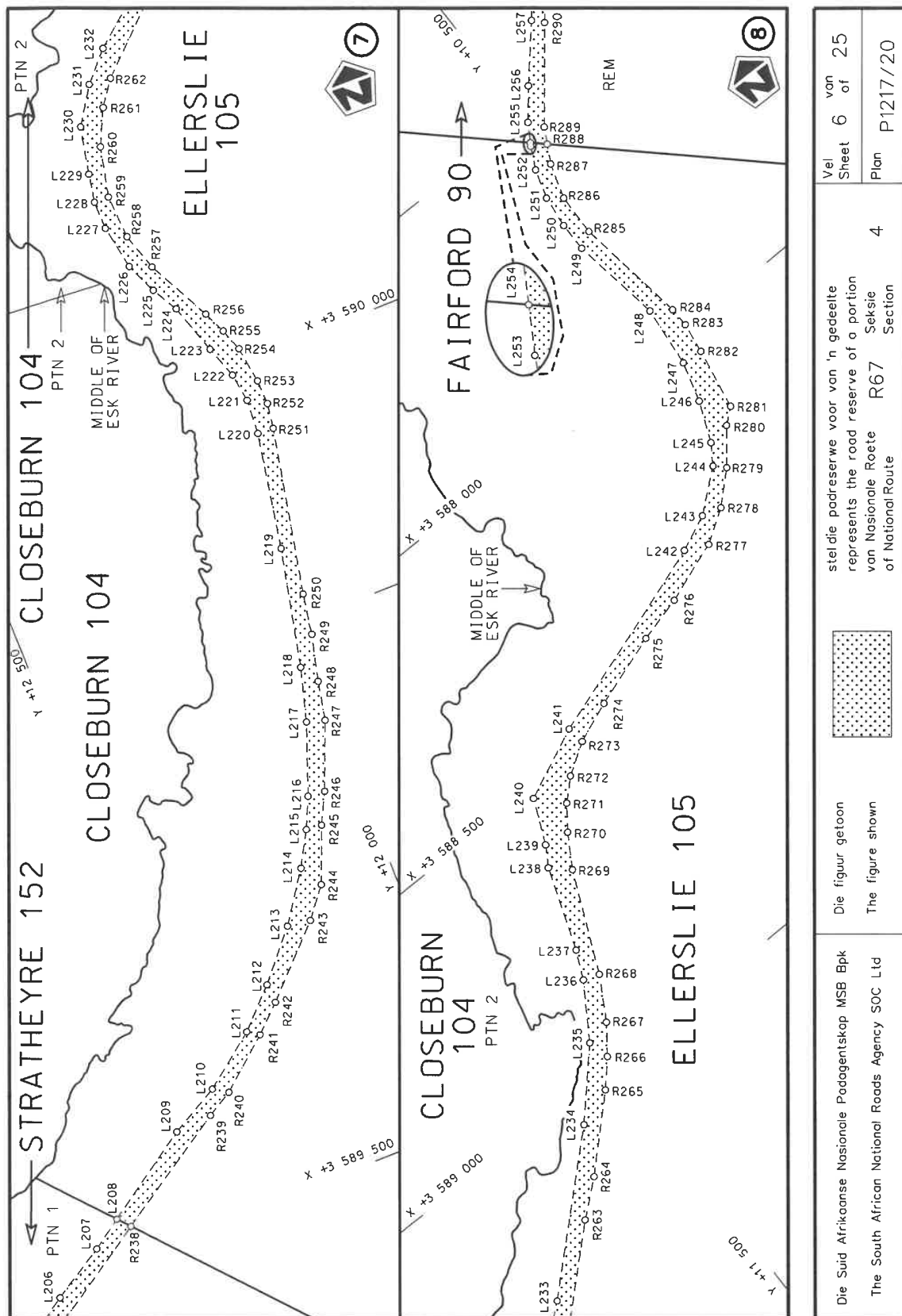


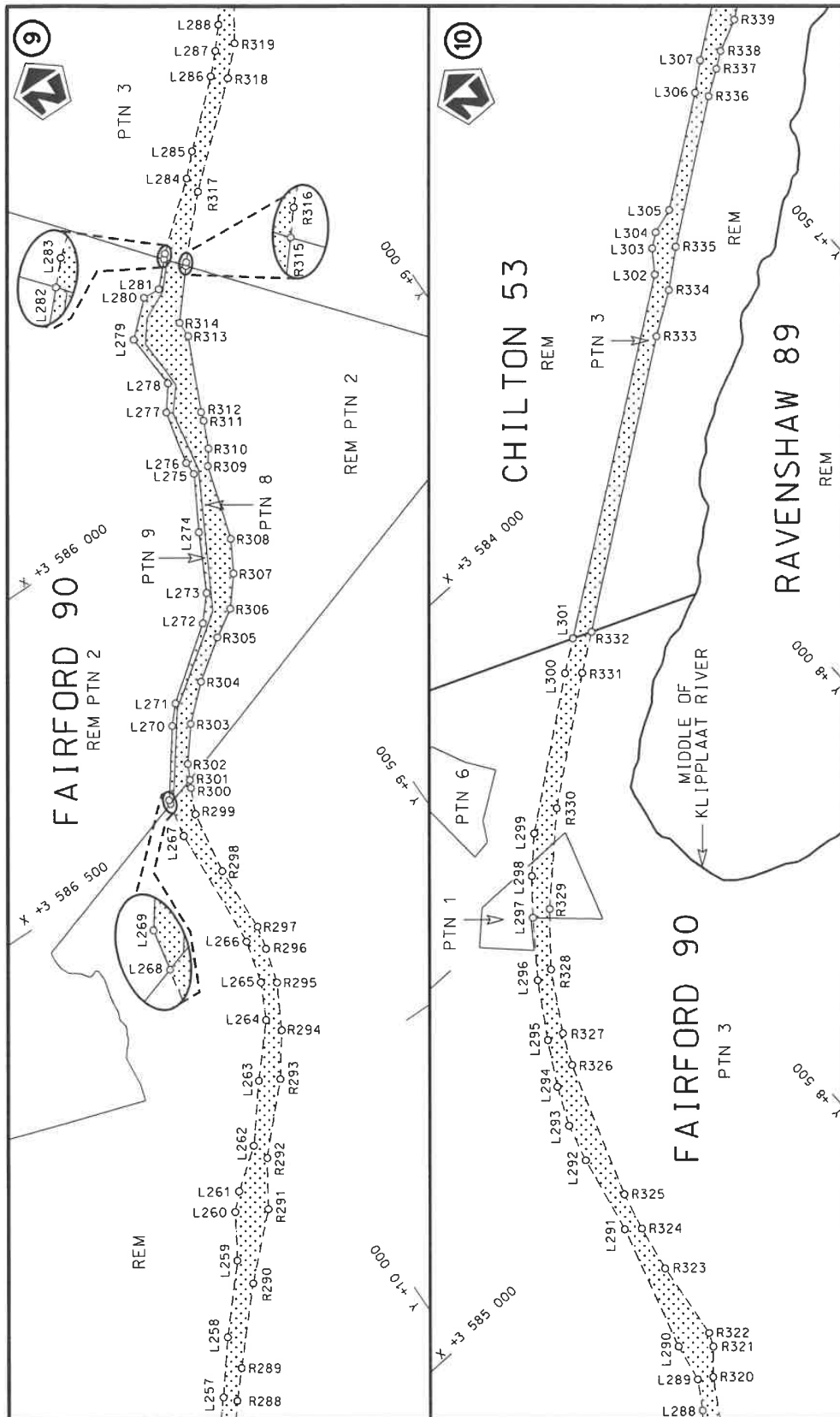


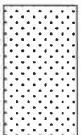
| | | | |
|---|---------------------------------------|---|---------------------------------------|
| Die Suid Afrikaanse Nasionale Padagentskap MSB Bpk The South African National Roads Agency SOC Ltd | Die figuur getoon The figure shown | stelsel padreserwe voor van 'n gedeelte represents the road reserve of a portion van Nasionale Roete R67 of National Route Section | Vel Sheet 4 of 25 Plan P1217/20 |
|---|---------------------------------------|---|---------------------------------------|

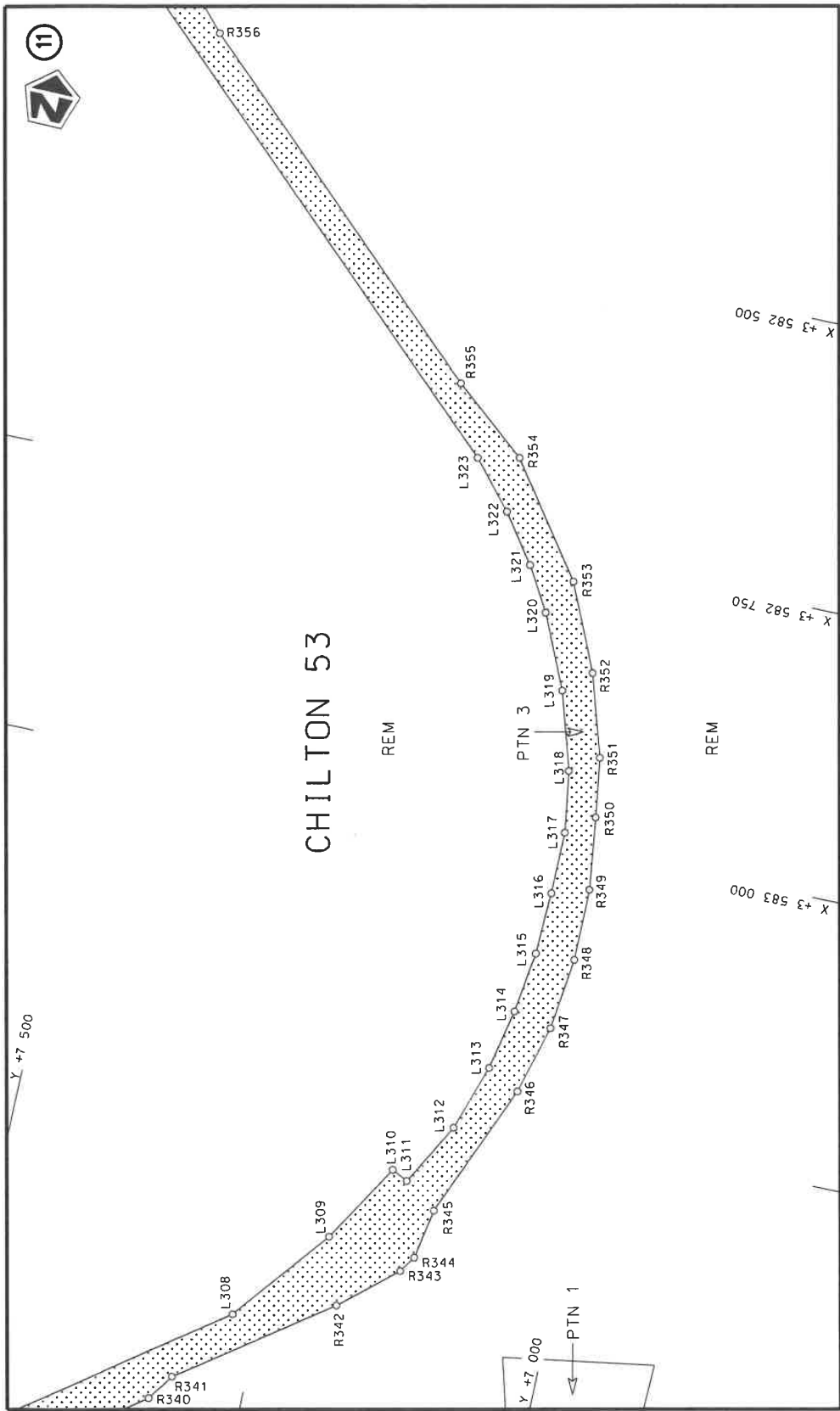


| | | | |
|---|---------------------------------------|---|---|
| Die Suid Afrikaanse Nasionale Padagentskap MSB Bpk The South African National Roads Agency SOC Ltd | Die figuur getoon The figure shown | steldie padreserwe voor van 'n gedeelte represents the road reserve of a portion van Nasionale Roete of National Route | Vel Sheet 5 of 25 Plan P1217/20 |
|---|---------------------------------------|---|---|

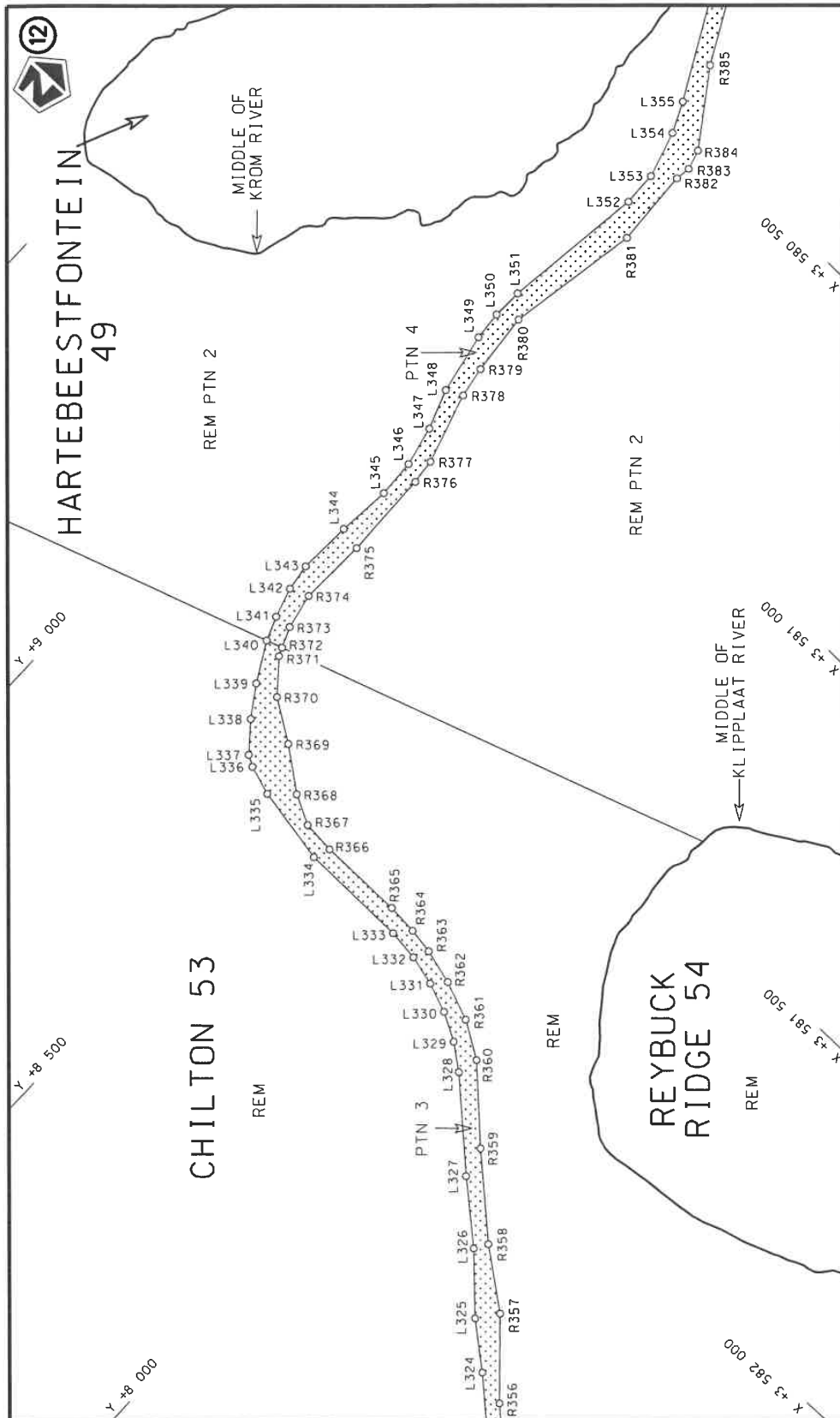


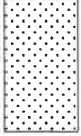


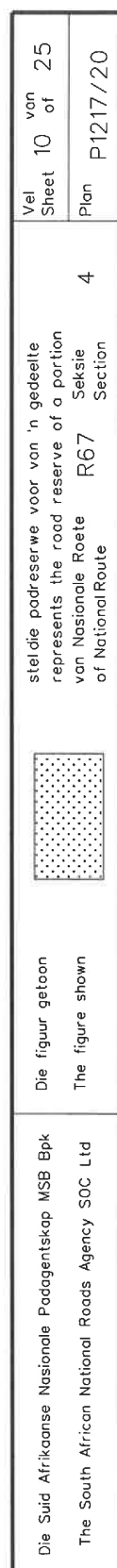
| | | | |
|---|---------------------------------------|---|--|
| Die Suid Afrikaanse Nasionale Padagentskap MSB Bpk The South African National Roads Agency SOC Ltd | Die figuur getoon The figure shown |  | stel die padreserwe voor van 'n gedeelte represents the road reserve of a portion van Nasionale Roete of National Route |
| | Vel Sheet | 7 of | 25 of |
| | Plan | 4 | P1217/20 |

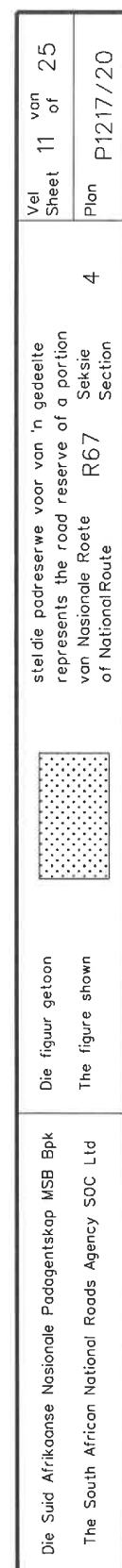


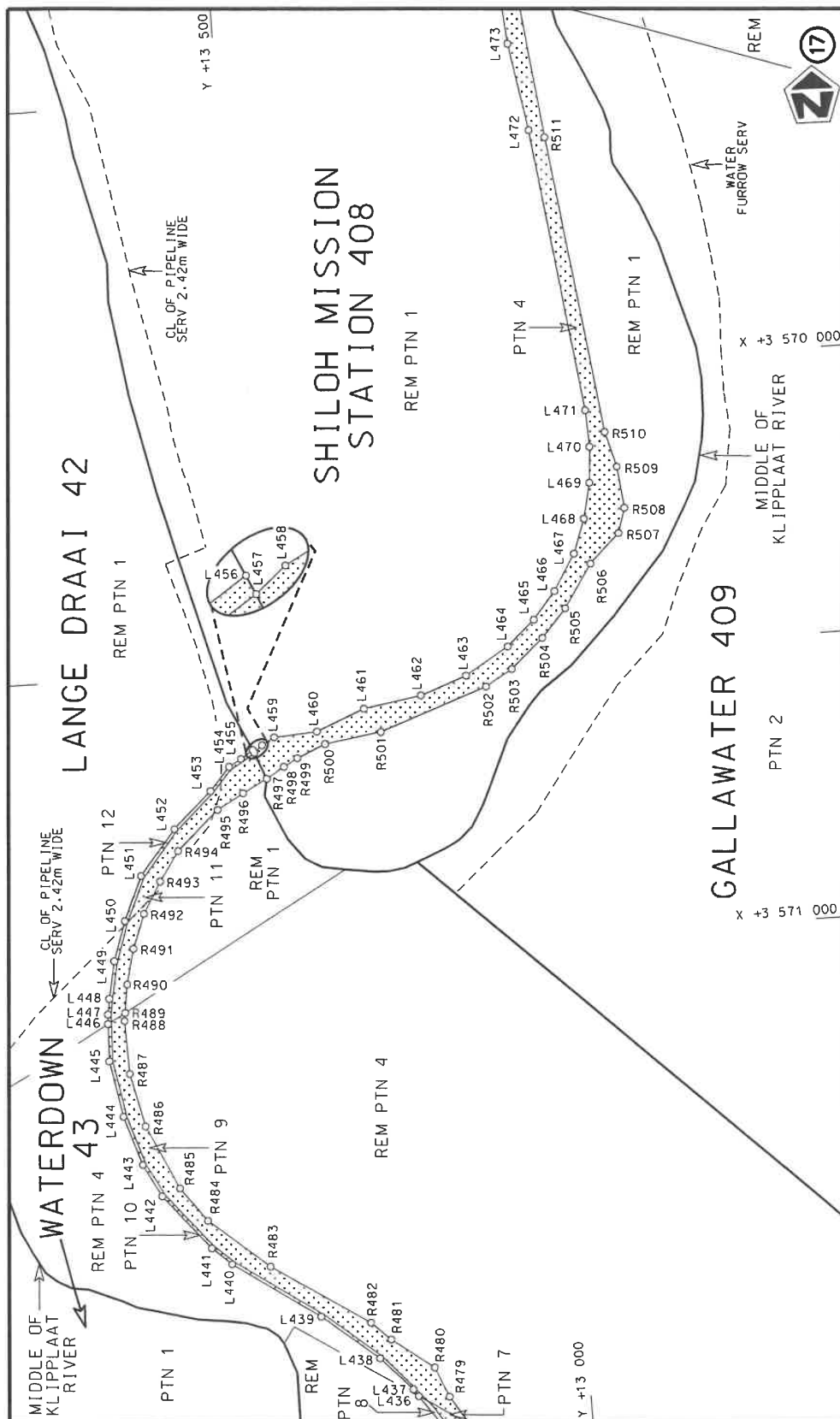
| | | | | | | | | | | | |
|---|--|---------------------------------------|--|--|--|--|--|--------------|----------|-----------|----|
| Die Suid Afrikaanse Nasionale Padogentskap MSB Bpk The South African National Roads Agency SOC Ltd | | Die figuur getoon The figure shown | | | | stel die padreserwe voor van 'n gedeelte represents the road reserve of a portion van Nasionale Roete R67 of National Route | | Vel Sheet | 8 | van of | 25 |
| | | | | | | 4 | | Plan | P1217/20 | | |

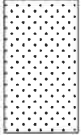


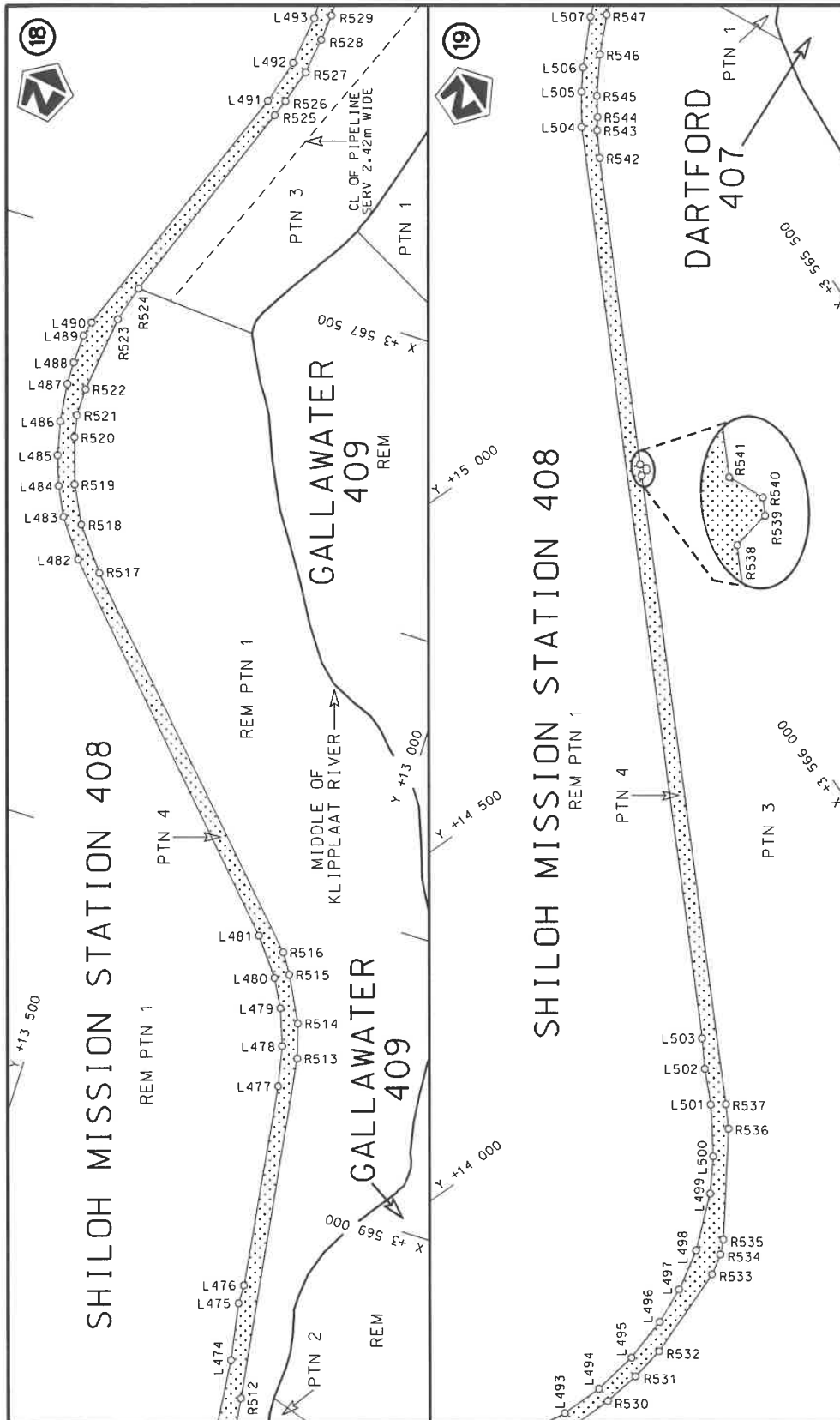
| | | | |
|---|---------------------------------------|---|---|
| Die Suid Afrikaanse Nasionale Padagentskap MSB Bpk The South African National Roads Agency SOC Ltd | Die figuur getoon The figure shown |  stel die padreserwe voor van 'n gedeelte represents the road reserve of a portion van Nasionale Roete of National Route | Vel Sheet 9 of 25 Plan P1217/20 |
| | | 4 | Seksie Section R67 |

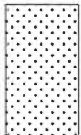


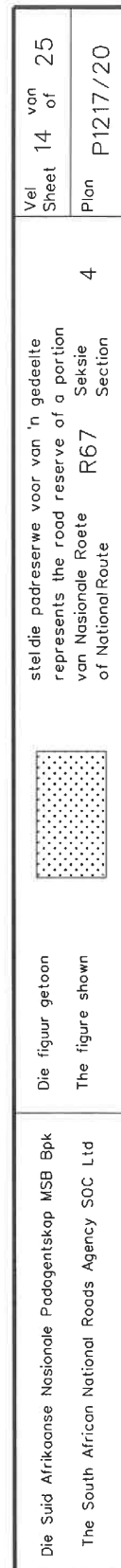




| | | | |
|---|---------------------------------------|---|--|
| Die Suid Afrikaanse Nasionale Padogentskap MSB Bpk The South African National Roads Agency SOC Ltd | Die figuur getoon The figure shown |  stelde padreserwe voor van 'n gedeelte represents the road reserve of a portion van Nasionale Roete of National Route | Vel Sheet 12 of 25 Plan P1217/20 |
| R67 Seksie Section 4 | | | |



| | | | | | |
|---|---------------------------------------|---|---|---|-------------------------------------|
| Die Suid Afrikaanse Nasionale Padagentskap MSB Bpk The South African National Roads Agency SOC Ltd | Die figuur getoon The figure shown |  | steldie padreserwe voor van 'n gedeelte represents the road reserve of a portion van Nasionale Roete R67 of National Route Section | 4 | Vel Sheet 13 of 25 Plan P1217/20 |
|---|---------------------------------------|---|---|---|-------------------------------------|



| PADRESERVE KOÖRDINATE / ROAD RESERVE CO-ORDINATES | | | | | | | | | |
|---|-----------|--------------|--------|-----|----------------------------|--------------|--------|----|----------|
| LINKERKANT/LEFT HAND SIDE | | | | | REGTERKANT/RIGHT HAND SIDE | | | | |
| | Y | X | WG 27° | | | Y | X | | |
| L1 | 21 534.28 | 3 602 093.23 | | R1 | 21 490.22 | 3 602 103.02 | | | |
| L2 | 21 519.36 | 3 602 091.80 | | R2 | 21 382.81 | 3 602 011.70 | | | |
| L3 | 21 323.12 | 3 601 925.46 | | R3 | 21 101.31 | 3 601 782.75 | | | |
| L4 | 21 128.15 | 3 601 771.00 | | R4 | 20 544.68 | 3 601 340.20 | | | |
| L5 | 20 881.96 | 3 601 575.96 | | R5 | 20 472.67 | 3 601 296.71 | | | |
| L6 | 20 860.34 | 3 601 556.66 | | R6 | 20 404.05 | 3 601 228.39 | | | |
| L7 | 20 656.55 | 3 601 396.16 | | R7 | 20 148.81 | 3 601 025.46 | | | |
| L8 | 20 566.38 | 3 601 321.22 | | R8 | 19 939.05 | 3 600 858.32 | | | |
| L9 | 20 498.71 | 3 601 260.50 | | R9 | 19 837.65 | 3 600 787.51 | | | |
| L10 | 20 378.79 | 3 601 173.55 | | R10 | 19 779.85 | 3 600 752.16 | | | |
| L11 | 20 172.48 | 3 601 008.66 | | R11 | 19 768.74 | 3 600 745.37 | | | |
| L12 | 19 916.18 | 3 600 803.82 | | R12 | 19 692.84 | 3 600 727.12 | | | |
| L13 | 19 866.80 | 3 600 766.63 | | R13 | 19 646.90 | 3 600 718.94 | | | |
| L14 | 19 832.23 | 3 600 743.65 | | R14 | 19 574.46 | 3 600 712.90 | | | |
| L15 | 19 741.81 | 3 600 702.12 | | R15 | 19 358.89 | 3 600 719.25 | | | |
| L16 | 19 701.67 | 3 600 694.80 | | R16 | 19 301.50 | 3 600 715.77 | | | |
| L17 | 19 647.75 | 3 600 684.96 | | R17 | 19 232.44 | 3 600 685.81 | | | |
| L18 | 19 568.07 | 3 600 682.40 | | R18 | 19 202.59 | 3 600 666.54 | | | |
| L19 | 19 359.65 | 3 600 689.24 | | R19 | 19 149.08 | 3 600 616.62 | | | |
| L20 | 19 306.17 | 3 600 682.47 | | R20 | 19 106.88 | 3 600 548.80 | | | |
| L21 | 19 250.37 | 3 600 663.82 | | R21 | 19 095.74 | 3 600 469.69 | | | |
| L22 | 19 210.42 | 3 600 636.31 | | R22 | 19 094.20 | 3 600 340.32 | | | |
| L23 | 19 169.06 | 3 600 592.34 | | R23 | 19 093.34 | 3 600 267.26 | | | |
| L24 | 19 137.13 | 3 600 525.15 | | R24 | 19 047.97 | 3 600 191.15 | | | |
| L25 | 19 129.78 | 3 600 495.03 | | R25 | 18 976.96 | 3 600 149.34 | | | |
| L26 | 19 127.15 | 3 600 442.00 | | R26 | 18 729.59 | 3 600 119.29 | | | |
| L27 | 19 135.18 | 3 600 382.01 | | R27 | 18 685.05 | 3 600 099.88 | | | |
| L28 | 19 133.89 | 3 600 356.62 | | R28 | 18 634.18 | 3 600 059.86 | | | |
| L29 | 19 130.76 | 3 600 295.05 | | R29 | 18 606.96 | 3 600 021.33 | | | |
| L30 | 19 117.81 | 3 600 244.48 | | R30 | 18 591.84 | 3 599 988.75 | | | |
| L31 | 19 092.48 | 3 600 198.43 | | R31 | 18 579.26 | 3 599 920.81 | | | |
| L32 | 19 056.56 | 3 600 160.57 | | R32 | 18 581.97 | 3 599 863.68 | | | |
| L33 | 19 014.99 | 3 600 132.51 | | R33 | 18 582.31 | 3 599 856.43 | | | |
| L34 | 18 962.94 | 3 600 115.72 | | R34 | 18 605.31 | 3 599 769.64 | | | |
| L35 | 18 824.28 | 3 600 102.05 | | R35 | 18 611.02 | 3 599 683.81 | | | |
| L36 | 18 791.28 | 3 600 094.87 | | R36 | 18 607.21 | 3 599 626.37 | | | |
| L37 | 18 721.81 | 3 600 084.78 | | R37 | 18 574.31 | 3 599 540.19 | | | |
| L38 | 18 679.79 | 3 600 063.03 | | R38 | 18 552.83 | 3 599 468.09 | | | |
| L39 | 18 657.86 | 3 600 033.82 | | R39 | 18 492.99 | 3 599 308.51 | | | |
| L40 | 18 607.44 | 3 599 933.21 | | R40 | 18 475.09 | 3 599 254.82 | | | |
| L41 | 18 615.07 | 3 599 868.06 | | R41 | 18 464.00 | 3 599 206.47 | | | |
| L42 | 18 618.27 | 3 599 840.74 | | R42 | 18 463.48 | 3 599 159.90 | | | |
| L43 | 18 628.57 | 3 599 800.76 | | R43 | 18 473.48 | 3 599 088.27 | | | |
| L44 | 18 650.28 | 3 599 741.70 | | R44 | 18 504.92 | 3 598 997.05 | | | |
| L45 | 18 650.83 | 3 599 703.93 | | R45 | 18 523.47 | 3 598 952.20 | | | |
| L46 | 18 643.88 | 3 599 645.85 | | R46 | 18 605.92 | 3 598 795.25 | | | |
| L47 | 18 610.10 | 3 599 541.75 | | R47 | 18 658.09 | 3 598 717.80 | | | |
| L48 | 18 563.04 | 3 599 396.74 | | R48 | 18 682.98 | 3 598 659.84 | | | |
| L49 | 18 533.27 | 3 599 334.39 | | R49 | 18 687.57 | 3 598 591.62 | | | |
| L50 | 18 522.07 | 3 599 302.63 | | R50 | 18 668.68 | 3 598 538.62 | | | |
| L51 | 18 505.29 | 3 599 255.06 | | R51 | 18 635.44 | 3 598 492.88 | | | |
| | | | | | Vel Sheet | 15 | Van of | 25 | P1217/20 |

| PADRESERWE KOÖRDINATE / ROAD RESERVE CO-ORDINATES | | | | | | | | | |
|---|-----------|--------------|--------|--|--|-----------|--------------|--|--|
| LINKERKANT/LEFT HAND SIDE | | | | | REGTERKANT/RIGHT HAND SIDE | | | | |
| | Y | X | WG 27° | | | Y | X | | |
| L52 | 18 497.77 | 3 599 219.26 | | | R52 | 18 562.88 | 3 598 422.46 | | |
| L53 | 18 495.84 | 3 599 146.06 | | | R53 | 18 514.63 | 3 598 387.09 | | |
| L54 | 18 501.60 | 3 599 100.42 | | | R54 | 18 419.40 | 3 598 258.94 | | |
| L55 | 18 521.71 | 3 599 036.66 | | | R55 | 18 402.99 | 3 598 248.63 | | |
| L56 | 18 545.32 | 3 598 992.41 | | | R56 | 18 366.50 | 3 598 176.77 | | |
| L57 | 18 599.09 | 3 598 891.62 | | | R57 | 18 275.82 | 3 598 034.07 | | |
| L58 | 18 721.56 | 3 598 683.93 | | | R58 | 18 214.60 | 3 597 986.25 | | |
| L59 | 18 733.97 | 3 598 658.43 | | | R59 | 18 173.51 | 3 597 968.60 | | |
| L60 | 18 732.36 | 3 598 608.47 | | | R60 | 18 102.73 | 3 597 981.55 | | |
| L61 | 18 724.36 | 3 598 557.71 | | | R61 | 18 072.16 | 3 598 000.43 | | |
| L62 | 18 691.88 | 3 598 508.47 | | | R62 | 18 059.67 | 3 598 015.35 | | |
| L63 | 18 657.80 | 3 598 471.12 | | | R63 | 17 987.76 | 3 598 057.15 | | |
| L64 | 18 562.96 | 3 598 378.41 | | | R64 | 17 907.67 | 3 598 085.98 | | |
| L65 | 18 496.25 | 3 598 294.56 | | | R65 | 17 852.51 | 3 598 082.19 | | |
| L66 | 18 304.80 | 3 598 013.46 | | | R66 | 17 816.21 | 3 598 070.42 | | |
| L67 | 18 269.76 | 3 597 974.87 | | | R67 | 17 789.90 | 3 598 052.51 | | |
| L68 | 18 224.29 | 3 597 947.01 | | | R68 | 17 782.12 | 3 598 039.96 | | |
| L69 | 18 168.65 | 3 597 931.48 | | | R69 | 17 750.71 | 3 598 023.20 | | |
| L70 | 18 119.69 | 3 597 938.22 | | | R70 | 17 691.13 | 3 598 000.58 | | |
| L71 | 18 082.47 | 3 597 951.40 | | | R71 | 17 657.76 | 3 597 972.81 | | |
| L72 | 18 048.94 | 3 597 970.70 | | | R72 | 17 620.80 | 3 597 960.60 | | |
| L73 | 17 974.51 | 3 598 021.91 | | | R73 | 17 609.43 | 3 597 956.84 | | |
| L74 | 17 927.04 | 3 598 040.50 | | | R74 | 17 565.60 | 3 597 928.14 | | |
| L75 | 17 873.93 | 3 598 041.91 | | | R75 | 17 514.41 | 3 597 902.12 | | |
| L76 | 17 791.15 | 3 598 004.86 | | | R76 | 17 479.46 | 3 597 896.26 | | |
| L77 | 17 753.09 | 3 597 980.07 | | | R77 | 17 423.93 | 3 597 858.92 | | |
| L78 | 17 715.52 | 3 597 969.36 | | | R78 | 17 413.46 | 3 597 819.16 | | |
| L79 | 17 620.66 | 3 597 914.81 | | | R79 | 17 384.66 | 3 597 782.17 | | |
| L80 | 17 616.68 | 3 597 912.52 | | | R80 | 17 321.53 | 3 597 672.61 | | |
| L81 | 17 577.85 | 3 597 901.25 | | | R81 | 17 282.53 | 3 597 620.54 | | |
| L82 | 17 504.91 | 3 597 857.57 | | | R82 | 17 233.96 | 3 597 602.96 | | |
| L83 | 17 465.36 | 3 597 828.59 | | | R83 | 17 173.50 | 3 597 599.49 | | |
| L84 | 17 423.69 | 3 597 783.98 | | | R84 | 17 123.42 | 3 597 614.33 | | |
| L85 | 17 337.36 | 3 597 642.66 | | | R85 | 17 072.78 | 3 597 655.48 | | |
| L86 | 17 301.16 | 3 597 594.56 | | | R86 | 17 024.34 | 3 597 684.65 | | |
| L87 | 17 260.93 | 3 597 567.69 | | | R87 | 16 945.90 | 3 597 707.76 | | |
| L88 | 17 222.48 | 3 597 551.91 | | | R88 | 16 896.75 | 3 597 717.65 | | |
| L89 | 17 171.68 | 3 597 551.28 | | | R89 | 16 878.59 | 3 597 717.31 | | |
| L90 | 17 097.03 | 3 597 580.13 | | | R90 | 16 843.76 | 3 597 681.96 | | |
| L91 | 17 015.04 | 3 597 644.22 | | | R91 | 16 786.60 | 3 597 657.14 | | |
| L92 | 16 974.32 | 3 597 666.13 | | | R92 | 16 758.33 | 3 597 633.64 | | |
| L93 | 16 939.91 | 3 597 650.70 | | | R93 | 16 720.78 | 3 597 593.61 | | |
| L94 | 16 856.66 | 3 597 653.10 | | | R94 | 16 681.19 | 3 597 570.75 | | |
| L95 | 16 792.28 | 3 597 588.17 | | | R95 | 16 635.58 | 3 597 570.01 | | |
| L96 | 16 751.90 | 3 597 563.96 | | | R96 | 16 320.01 | 3 597 654.56 | | |
| L97 | 16 710.35 | 3 597 545.97 | | | R97 | 16 162.15 | 3 597 664.11 | | |
| L98 | 16 650.51 | 3 597 533.83 | | | R98 | 16 063.49 | 3 597 666.38 | | |
| L99 | 16 375.53 | 3 597 603.63 | | | R99 | 16 027.49 | 3 597 672.27 | | |
| L100 | 16 222.52 | 3 597 625.60 | | | R100 | 15 993.67 | 3 597 684.24 | | |
| L101 | 16 035.29 | 3 597 629.83 | | | R101 | 15 963.85 | 3 597 703.39 | | |
| L102 | 15 973.83 | 3 597 655.22 | | | R102 | 15 868.17 | 3 597 780.78 | | |
| | | | | | <div> <div>Vel</div> <div>Sheet</div> </div> <div>16</div> <div> <div>Van</div> <div>of</div> </div> <div>25</div> <div>P1217/20</div> | | | | |

| PADRESERVE KOÖRDINATE / ROAD RESERVE CO-ORDINATES | | | | | | | |
|---|-----------|--------------|--------|----------------------------|-----------|--------------|----------|
| LINKERKANT/LEFT HAND SIDE | | | | REGTERKANT/RIGHT HAND SIDE | | | |
| | Y | X | WG 27° | | Y | X | |
| L103 | 15 890.76 | 3 597 703.86 | | R103 | 15 850.66 | 3 597 798.49 | |
| L104 | 15 866.00 | 3 597 706.74 | | R104 | 15 826.07 | 3 597 797.96 | |
| L105 | 15 828.09 | 3 597 723.27 | | R105 | 15 812.65 | 3 597 786.61 | |
| L106 | 15 802.45 | 3 597 749.88 | | R106 | 15 745.65 | 3 597 775.62 | |
| L107 | 15 651.10 | 3 597 712.51 | | R107 | 15 727.27 | 3 597 772.61 | |
| L108 | 15 614.84 | 3 597 712.87 | | R108 | 15 701.43 | 3 597 764.23 | |
| L109 | 15 551.32 | 3 597 720.43 | | R109 | 15 629.58 | 3 597 754.18 | |
| L110 | 15 453.26 | 3 597 703.40 | | R110 | 15 575.31 | 3 597 753.90 | |
| L111 | 15 380.49 | 3 597 705.42 | | R111 | 15 539.98 | 3 597 759.65 | |
| L112 | 15 356.97 | 3 597 650.20 | | R112 | 15 489.38 | 3 597 774.46 | |
| L113 | 15 325.60 | 3 597 626.03 | | R113 | 15 434.83 | 3 597 775.89 | |
| L114 | 15 322.98 | 3 597 602.69 | | R114 | 15 383.14 | 3 597 746.98 | |
| L115 | 15 323.35 | 3 597 590.48 | | R115 | 15 342.32 | 3 597 747.25 | |
| L116 | 15 334.93 | 3 597 553.42 | | R116 | 15 327.08 | 3 597 740.26 | |
| L117 | 15 394.82 | 3 597 505.50 | | R117 | 15 323.85 | 3 597 704.78 | |
| L118 | 15 414.81 | 3 597 445.69 | | R118 | 15 271.32 | 3 597 627.65 | |
| L119 | 15 526.79 | 3 597 418.77 | | R119 | 15 267.53 | 3 597 624.39 | |
| L120 | 15 592.35 | 3 597 392.14 | | R120 | 15 240.17 | 3 597 592.08 | |
| L121 | 15 623.73 | 3 597 342.92 | | R121 | 15 242.45 | 3 597 554.92 | |
| L122 | 15 661.36 | 3 597 302.38 | | R122 | 15 265.15 | 3 597 475.49 | |
| L123 | 15 678.91 | 3 597 201.14 | | R123 | 15 401.75 | 3 597 395.24 | |
| L124 | 15 676.59 | 3 597 150.56 | | R124 | 15 427.45 | 3 597 387.11 | |
| L125 | 15 659.16 | 3 597 095.70 | | R125 | 15 472.29 | 3 597 377.57 | |
| L126 | 15 550.08 | 3 596 938.14 | | R126 | 15 517.72 | 3 597 376.08 | |
| L127 | 15 563.66 | 3 596 901.78 | | R127 | 15 566.35 | 3 597 353.13 | |
| L128 | 15 540.33 | 3 596 865.87 | | R128 | 15 601.02 | 3 597 320.21 | |
| L129 | 15 568.65 | 3 596 798.96 | | R129 | 15 601.87 | 3 597 297.10 | |
| L130 | 15 572.39 | 3 596 761.47 | | R130 | 15 602.07 | 3 597 290.38 | |
| L131 | 15 604.54 | 3 596 695.42 | | R131 | 15 617.84 | 3 597 280.89 | |
| L132 | 15 647.07 | 3 596 661.38 | | R132 | 15 647.46 | 3 597 159.62 | |
| L133 | 15 648.64 | 3 596 646.52 | | R133 | 15 633.85 | 3 597 113.03 | |
| L134 | 15 703.28 | 3 596 546.23 | | R134 | 15 554.07 | 3 597 009.40 | |
| L135 | 15 722.27 | 3 596 520.82 | | R135 | 15 534.27 | 3 596 980.39 | |
| L136 | 15 730.29 | 3 596 493.19 | | R136 | 15 512.23 | 3 596 922.60 | |
| L137 | 15 729.03 | 3 596 449.99 | | R137 | 15 506.57 | 3 596 923.23 | |
| L138 | 15 745.61 | 3 596 386.50 | | R138 | 15 493.06 | 3 596 864.13 | |
| L139 | 15 736.26 | 3 596 359.55 | | R139 | 15 492.70 | 3 596 856.62 | |
| L140 | 15 696.60 | 3 596 292.13 | | R140 | 15 499.79 | 3 596 852.78 | |
| L141 | 15 700.22 | 3 596 236.46 | | R141 | 15 501.81 | 3 596 814.38 | |
| L142 | 15 694.57 | 3 596 181.26 | | R142 | 15 496.11 | 3 596 801.95 | |
| L143 | 15 717.93 | 3 596 133.12 | | R143 | 15 497.83 | 3 596 794.33 | |
| L144 | 15 729.80 | 3 596 071.46 | | R144 | 15 509.04 | 3 596 783.98 | |
| L145 | 15 646.16 | 3 595 708.84 | | R145 | 15 524.05 | 3 596 743.36 | |
| L146 | 15 641.02 | 3 595 602.98 | | R146 | 15 540.44 | 3 596 720.80 | |
| L147 | 15 636.68 | 3 595 572.57 | | R147 | 15 587.19 | 3 596 673.87 | |
| L148 | 15 626.28 | 3 595 543.68 | | R148 | 15 583.83 | 3 596 666.62 | |
| L149 | 15 651.35 | 3 595 529.76 | | R149 | 15 586.11 | 3 596 660.75 | |
| L150 | 15 646.53 | 3 595 514.43 | | R150 | 15 592.58 | 3 596 658.09 | |
| L151 | 15 608.75 | 3 595 507.14 | | R151 | 15 597.45 | 3 596 646.01 | |
| L152 | 15 557.17 | 3 595 450.05 | | R152 | 15 615.03 | 3 596 630.24 | |
| L153 | 15 491.16 | 3 595 422.70 | | R153 | 15 639.04 | 3 596 597.12 | |
| | | | | Vel Sheet | 17 | Van of 25 | P1217/20 |

| PADRESERVE KOÖRDINATE / ROAD RESERVE CO-ORDINATES | | | | | | | | | |
|---|-----------|--------------|--------|------|----------------------------|--------------|-----------|----|----------|
| LINKERKANT/LEFT HAND SIDE | | | | | REGTERKANT/RIGHT HAND SIDE | | | | |
| | Y | X | WG 27° | | | Y | X | | |
| L154 | 15 447.69 | 3 595 408.12 | | R154 | 15 669.63 | 3 596 545.05 | | | |
| L155 | 15 421.06 | 3 595 399.20 | | R155 | 15 678.38 | 3 596 506.78 | | | |
| L156 | 15 375.07 | 3 595 345.21 | | R156 | 15 688.26 | 3 596 479.50 | | | |
| L157 | 15 351.92 | 3 595 292.34 | | R157 | 15 697.22 | 3 596 442.48 | | | |
| L158 | 15 370.77 | 3 595 267.18 | | R158 | 15 695.78 | 3 596 413.82 | | | |
| L159 | 15 370.10 | 3 595 256.94 | | R159 | 15 672.28 | 3 596 365.81 | | | |
| L160 | 15 357.47 | 3 595 231.03 | | R160 | 15 645.44 | 3 596 291.52 | | | |
| L161 | 15 363.78 | 3 595 217.29 | | R161 | 15 637.38 | 3 596 230.58 | | | |
| L162 | 15 393.88 | 3 595 204.57 | | R162 | 15 651.83 | 3 596 203.44 | | | |
| L163 | 15 436.43 | 3 595 220.15 | | R163 | 15 661.90 | 3 596 128.36 | | | |
| L164 | 15 459.83 | 3 595 192.40 | | R164 | 15 674.64 | 3 596 082.39 | | | |
| L165 | 15 471.03 | 3 595 157.99 | | R165 | 15 675.46 | 3 596 014.70 | | | |
| L166 | 15 540.46 | 3 595 073.61 | | R166 | 15 655.90 | 3 595 933.08 | | | |
| L167 | 15 581.59 | 3 595 041.85 | | R167 | 15 636.99 | 3 595 845.72 | | | |
| L168 | 15 616.71 | 3 594 981.01 | | R168 | 15 628.07 | 3 595 799.97 | | | |
| L169 | 15 625.95 | 3 594 947.41 | | R169 | 15 621.16 | 3 595 729.36 | | | |
| L170 | 15 624.58 | 3 594 899.73 | | R170 | 15 607.06 | 3 595 580.94 | | | |
| L171 | 15 601.36 | 3 594 822.84 | | R171 | 15 591.57 | 3 595 549.08 | | | |
| L172 | 15 600.66 | 3 594 777.47 | | R172 | 15 545.03 | 3 595 503.70 | | | |
| L173 | 15 582.46 | 3 594 732.27 | | R173 | 15 519.29 | 3 595 477.40 | | | |
| L174 | 15 498.58 | 3 594 628.01 | | R174 | 15 469.12 | 3 595 464.73 | | | |
| L175 | 15 475.89 | 3 594 589.18 | | R175 | 15 414.51 | 3 595 446.09 | | | |
| L176 | 15 388.11 | 3 594 290.87 | | R176 | 15 383.15 | 3 595 421.16 | | | |
| L177 | 15 340.49 | 3 594 161.69 | | R177 | 15 345.28 | 3 595 377.47 | | | |
| L178 | 15 281.60 | 3 593 980.90 | | R178 | 15 313.98 | 3 595 357.61 | | | |
| L179 | 15 263.97 | 3 593 949.67 | | R179 | 15 293.44 | 3 595 331.54 | | | |
| L180 | 15 168.87 | 3 593 639.01 | | R180 | 15 320.63 | 3 595 275.42 | | | |
| L181 | 15 132.94 | 3 593 549.33 | | R181 | 15 317.80 | 3 595 212.11 | | | |
| L182 | 15 095.01 | 3 593 474.59 | | R182 | 15 324.18 | 3 595 196.02 | | | |
| L183 | 15 056.29 | 3 593 408.58 | | R183 | 15 348.40 | 3 595 170.91 | | | |
| L184 | 15 089.77 | 3 593 383.81 | | R184 | 15 362.99 | 3 595 118.26 | | | |
| L185 | 15 088.95 | 3 593 370.73 | | R185 | 15 437.40 | 3 595 090.96 | | | |
| L186 | 15 010.57 | 3 593 315.50 | | R186 | 15 473.27 | 3 595 070.75 | | | |
| L187 | 14 978.30 | 3 593 310.50 | | R187 | 15 495.28 | 3 595 066.62 | | | |
| L188 | 14 948.18 | 3 593 277.36 | | R188 | 15 521.64 | 3 595 038.12 | | | |
| L189 | 14 787.23 | 3 593 119.01 | | R189 | 15 548.94 | 3 595 019.00 | | | |
| L190 | 14 264.41 | 3 592 575.36 | | R190 | 15 558.58 | 3 594 991.67 | | | |
| L191 | 14 200.01 | 3 592 511.61 | | R191 | 15 559.37 | 3 594 928.16 | | | |
| L192 | 14 088.47 | 3 592 383.58 | | R192 | 15 570.05 | 3 594 895.17 | | | |
| L193 | 14 063.86 | 3 592 355.32 | | R193 | 15 548.98 | 3 594 863.07 | | | |
| L194 | 13 994.08 | 3 592 285.27 | | R194 | 15 468.92 | 3 594 863.09 | | | |
| L195 | 13 918.66 | 3 592 221.58 | | R195 | 15 460.68 | 3 594 771.25 | | | |
| L196 | 13 832.82 | 3 592 155.27 | | R196 | 15 378.93 | 3 594 557.77 | | | |
| L197 | 13 787.31 | 3 592 112.48 | | R197 | 15 336.71 | 3 594 353.63 | | | |
| L198 | 13 732.37 | 3 592 077.00 | | R198 | 15 337.29 | 3 594 299.50 | | | |
| L199 | 13 727.25 | 3 592 056.44 | | R199 | 15 297.95 | 3 594 186.82 | | | |
| L200 | 13 697.36 | 3 592 050.45 | | R200 | 15 288.52 | 3 594 142.49 | | | |
| L201 | 13 685.08 | 3 592 042.63 | | R201 | 15 223.00 | 3 593 991.97 | | | |
| L202 | 13 387.20 | 3 591 852.94 | | R202 | 15 222.84 | 3 593 965.49 | | | |
| L203 | 13 212.32 | 3 591 744.99 | | R203 | 15 206.10 | 3 593 915.41 | | | |
| L204 | 13 145.51 | 3 591 696.62 | | R204 | 15 168.64 | 3 593 819.50 | | | |
| | | | | | Vel Sheet | 18 | Van of | 25 | P1217/20 |

| PADRESERVE KOÖRDINATE / ROAD RESERVE CO-ORDINATES | | | | | | | | | | | | | | | | | | | |
|---|-----------|-------|--------|----------|--|-----------|-------|--------|--|-----|----|-----|----|----------|-------|--|----|--|--|
| LINKERKANT/LEFT HAND SIDE | | | | | REGTERKANT/RIGHT HAND SIDE | | | | | | | | | | | | | | |
| | Y | | X | WG 27° | | Y | | X | | | | | | | | | | | |
| L205 | 12 991.74 | 3 591 | 598.69 | | R205 | 15 145.67 | 3 593 | 737.75 | | | | | | | | | | | |
| L206 | 12 881.30 | 3 591 | 523.04 | | R206 | 15 138.23 | 3 593 | 695.55 | | | | | | | | | | | |
| L207 | 12 782.92 | 3 591 | 462.70 | | R207 | 15 091.39 | 3 593 | 553.32 | | | | | | | | | | | |
| L208 | 12 726.75 | 3 591 | 424.82 | | R208 | 15 064.04 | 3 593 | 500.58 | | | | | | | | | | | |
| L209 | 12 560.43 | 3 591 | 312.65 | | R209 | 15 026.33 | 3 593 | 446.84 | | | | | | | | | | | |
| L210 | 12 468.83 | 3 591 | 261.62 | | R210 | 14 998.71 | 3 593 | 394.61 | | | | | | | | | | | |
| L211 | 12 368.96 | 3 591 | 184.23 | | R211 | 14 959.60 | 3 593 | 355.39 | | | | | | | | | | | |
| L212 | 12 300.72 | 3 591 | 115.25 | | R212 | 14 818.90 | 3 593 | 187.00 | | | | | | | | | | | |
| L213 | 12 224.43 | 3 591 | 025.78 | | R213 | 14 611.67 | 3 592 | 977.14 | | | | | | | | | | | |
| L214 | 12 160.69 | 3 590 | 933.32 | | R214 | 14 230.81 | 3 592 | 583.81 | | | | | | | | | | | |
| L215 | 12 124.43 | 3 590 | 868.85 | | R215 | 14 187.20 | 3 592 | 535.73 | | | | | | | | | | | |
| L216 | 12 098.16 | 3 590 | 811.31 | | R216 | 14 102.64 | 3 592 | 470.88 | | | | | | | | | | | |
| L217 | 12 049.37 | 3 590 | 679.73 | | R217 | 14 067.63 | 3 592 | 437.45 | | | | | | | | | | | |
| L218 | 12 021.68 | 3 590 | 579.65 | | R218 | 14 030.70 | 3 592 | 402.19 | | | | | | | | | | | |
| L219 | 11 973.41 | 3 590 | 357.22 | | R219 | 13 996.23 | 3 592 | 349.17 | | | | | | | | | | | |
| L220 | 11 934.16 | 3 590 | 139.20 | | R220 | 13 960.68 | 3 592 | 305.30 | | | | | | | | | | | |
| L221 | 11 930.03 | 3 590 | 073.56 | | R221 | 13 884.48 | 3 592 | 229.66 | | | | | | | | | | | |
| L222 | 11 938.19 | 3 590 | 019.30 | | R222 | 13 823.72 | 3 592 | 179.65 | | | | | | | | | | | |
| L223 | 11 959.77 | 3 589 | 958.67 | | R223 | 13 780.81 | 3 592 | 153.16 | | | | | | | | | | | |
| L224 | 11 991.02 | 3 589 | 864.32 | | R224 | 13 722.36 | 3 592 | 112.79 | | | | | | | | | | | |
| L225 | 12 018.29 | 3 589 | 816.10 | | R225 | 13 707.91 | 3 592 | 116.96 | | | | | | | | | | | |
| L226 | 12 043.93 | 3 589 | 757.48 | | R226 | 13 693.21 | 3 592 | 106.74 | | | | | | | | | | | |
| L227 | 12 060.00 | 3 589 | 674.04 | | R227 | 13 690.22 | 3 592 | 097.05 | | | | | | | | | | | |
| L228 | 12 060.97 | 3 589 | 620.82 | | R228 | 13 676.80 | 3 592 | 087.53 | | | | | | | | | | | |
| L229 | 12 051.32 | 3 589 | 567.74 | | R229 | 13 544.28 | 3 591 | 993.50 | | | | | | | | | | | |
| L230 | 12 033.12 | 3 589 | 479.29 | | R230 | 13 372.73 | 3 591 | 878.35 | | | | | | | | | | | |
| L231 | 11 989.17 | 3 589 | 410.51 | | R231 | 13 289.54 | 3 591 | 836.13 | | | | | | | | | | | |
| L232 | 11 939.98 | 3 589 | 356.62 | | R232 | 13 256.70 | 3 591 | 803.82 | | | | | | | | | | | |
| L233 | 11 853.99 | 3 589 | 285.39 | | R233 | 13 142.18 | 3 591 | 738.70 | | | | | | | | | | | |
| L234 | 11 605.61 | 3 589 | 056.66 | | R234 | 13 046.11 | 3 591 | 675.39 | | | | | | | | | | | |
| L235 | 11 500.42 | 3 588 | 942.54 | | R235 | 12 983.95 | 3 591 | 627.45 | | | | | | | | | | | |
| L236 | 11 435.09 | 3 588 | 842.21 | | R236 | 12 706.76 | 3 591 | 447.38 | | | | | | | | | | | |
| L237 | 11 410.26 | 3 588 | 789.70 | | R237 | 12 490.28 | 3 591 | 306.75 | | | | | | | | | | | |
| L238 | 11 353.71 | 3 588 | 635.54 | | R238 | 12 442.07 | 3 591 | 278.53 | | | | | | | | | | | |
| L239 | 11 330.64 | 3 588 | 598.37 | | R239 | 12 347.62 | 3 591 | 198.50 | | | | | | | | | | | |
| L240 | 11 293.63 | 3 588 | 515.64 | | R240 | 12 298.45 | 3 591 | 151.63 | | | | | | | | | | | |
| L241 | 11 158.95 | 3 588 | 455.00 | | R241 | 12 180.36 | 3 591 | 031.56 | | | | | | | | | | | |
| L242 | 10 778.76 | 3 588 | 327.09 | | R242 | 12 136.42 | 3 590 | 976.02 | | | | | | | | | | | |
| L243 | 10 710.96 | 3 588 | 297.25 | | R243 | 12 094.76 | 3 590 | 871.63 | | | | | | | | | | | |
| L244 | 10 636.73 | 3 588 | 236.64 | | R244 | 12 065.73 | 3 590 | 814.14 | | | | | | | | | | | |
| L245 | 10 611.98 | 3 588 | 199.81 | | R245 | 12 015.66 | 3 590 | 689.29 | | | | | | | | | | | |
| L246 | 10 580.41 | 3 588 | 124.35 | | R246 | 12 000.80 | 3 590 | 616.14 | | | | | | | | | | | |
| L247 | 10 558.94 | 3 588 | 048.98 | | R247 | 11 979.20 | 3 590 | 529.27 | | | | | | | | | | | |
| L248 | 10 547.39 | 3 587 | 932.88 | | R248 | 11 966.35 | 3 590 | 452.23 | | | | | | | | | | | |
| L249 | 10 573.38 | 3 587 | 760.95 | | R249 | 11 903.91 | 3 590 | 140.55 | | | | | | | | | | | |
| L250 | 10 572.80 | 3 587 | 706.23 | | R250 | 11 896.81 | 3 590 | 093.09 | | | | | | | | | | | |
| L251 | 10 565.69 | 3 587 | 645.47 | | R251 | 11 898.55 | 3 590 | 046.44 | | | | | | | | | | | |
| L252 | 10 548.63 | 3 587 | 591.12 | | R252 | 11 908.72 | 3 589 | 977.31 | | | | | | | | | | | |
| L253 | 10 528.25 | 3 587 | 551.13 | | R253 | 11 924.06 | 3 589 | 935.52 | | | | | | | | | | | |
| L254 | 10 524.51 | 3 587 | 545.12 | | R254 | 11 942.95 | 3 589 | 893.91 | | | | | | | | | | | |
| L255 | 10 504.09 | 3 587 | 512.29 | | R255 | 12 004.23 | 3 589 | 774.04 | | | | | | | | | | | |
| | | | | | <table><tr><td>Vel</td><td>19</td><td>Van</td><td>25</td><td>P1217/20</td></tr><tr><td>Sheet</td><td></td><td>of</td><td></td><td></td></tr></table> | | | | | Vel | 19 | Van | 25 | P1217/20 | Sheet | | of | | |
| Vel | 19 | Van | 25 | P1217/20 | | | | | | | | | | | | | | | |
| Sheet | | of | | | | | | | | | | | | | | | | | |

| PADRESERVE KOÖRDINATE / ROAD RESERVE CO-ORDINATES | | | | | | | | | |
|---|-----------|-------|--------|--|--|-----------|-------|--------|--|
| LINKERKANT/LEFT HAND SIDE | | | | | REGTERKANT/RIGHT HAND SIDE | | | | |
| | Y | X | WG 27° | | | Y | X | | |
| L256 | 10 460.48 | 3 587 | 458.75 | | R256 | 12 027.35 | 3 589 | 703.76 | |
| L257 | 10 379.03 | 3 587 | 366.11 | | R257 | 12 033.01 | 3 589 | 621.20 | |
| L258 | 10 313.65 | 3 587 | 282.89 | | R258 | 12 012.14 | 3 589 | 527.65 | |
| L259 | 10 224.42 | 3 587 | 180.84 | | R259 | 11 980.47 | 3 589 | 460.70 | |
| L260 | 10 179.82 | 3 587 | 108.10 | | R260 | 11 947.45 | 3 589 | 413.84 | |
| L261 | 10 153.74 | 3 587 | 081.80 | | R261 | 11 716.77 | 3 589 | 198.71 | |
| L262 | 10 087.74 | 3 587 | 029.93 | | R262 | 11 652.47 | 3 589 | 145.12 | |
| L263 | 10 016.46 | 3 586 | 940.56 | | R263 | 11 533.25 | 3 589 | 030.10 | |
| L264 | 9 945.85 | 3 586 | 859.48 | | R264 | 11 490.75 | 3 588 | 983.12 | |
| L265 | 9 916.71 | 3 586 | 799.68 | | R265 | 11 451.51 | 3 588 | 931.47 | |
| L266 | 9 897.48 | 3 586 | 726.18 | | R266 | 11 405.15 | 3 588 | 852.51 | |
| L267 | 9 885.22 | 3 586 | 511.23 | | R267 | 11 320.45 | 3 588 | 666.57 | |
| L268 | 9 873.59 | 3 586 | 451.87 | | R268 | 11 283.37 | 3 588 | 605.60 | |
| L269 | 9 872.20 | 3 586 | 444.83 | | R269 | 11 250.30 | 3 588 | 561.47 | |
| L270 | 9 794.74 | 3 586 | 340.14 | | R270 | 11 212.65 | 3 588 | 525.96 | |
| L271 | 9 767.69 | 3 586 | 310.56 | | R271 | 11 154.60 | 3 588 | 488.86 | |
| L272 | 9 649.62 | 3 586 | 221.16 | | R272 | 11 077.87 | 3 588 | 457.95 | |
| L273 | 9 614.35 | 3 586 | 180.74 | | R273 | 10 939.94 | 3 588 | 411.16 | |
| L274 | 9 566.33 | 3 586 | 085.08 | | R274 | 10 852.67 | 3 588 | 388.33 | |
| L275 | 9 516.18 | 3 585 | 995.36 | | R275 | 10 735.56 | 3 588 | 347.03 | |
| L276 | 9 516.89 | 3 585 | 972.16 | | R276 | 10 673.87 | 3 588 | 307.43 | |
| L277 | 9 496.34 | 3 585 | 879.40 | | R277 | 10 617.95 | 3 588 | 255.30 | |
| L278 | 9 465.60 | 3 585 | 838.30 | | R278 | 10 568.49 | 3 588 | 192.66 | |
| L279 | 9 472.15 | 3 585 | 741.90 | | R279 | 10 539.84 | 3 588 | 169.05 | |
| L280 | 9 416.13 | 3 585 | 691.06 | | R280 | 10 519.13 | 3 588 | 053.11 | |
| L281 | 9 386.72 | 3 585 | 692.91 | | R281 | 10 511.00 | 3 587 | 995.26 | |
| L282 | 9 349.86 | 3 585 | 654.37 | | R282 | 10 512.21 | 3 587 | 957.97 | |
| L283 | 9 343.12 | 3 585 | 647.31 | | R283 | 10 543.11 | 3 587 | 744.34 | |
| L284 | 9 237.77 | 3 585 | 559.79 | | R284 | 10 540.47 | 3 587 | 665.82 | |
| L285 | 9 203.20 | 3 585 | 525.55 | | R285 | 10 519.52 | 3 587 | 599.86 | |
| L286 | 9 102.64 | 3 585 | 435.25 | | R286 | 10 501.37 | 3 587 | 566.94 | |
| L287 | 9 071.39 | 3 585 | 402.93 | | R287 | 10 485.35 | 3 587 | 537.89 | |
| L288 | 9 041.40 | 3 585 | 367.79 | | R288 | 10 362.34 | 3 587 | 384.64 | |
| L289 | 9 010.67 | 3 585 | 321.28 | | R289 | 10 323.89 | 3 587 | 341.11 | |
| L290 | 8 997.06 | 3 585 | 255.93 | | R290 | 10 223.43 | 3 587 | 229.61 | |
| L291 | 8 930.07 | 3 585 | 039.83 | | R291 | 10 128.16 | 3 587 | 136.60 | |
| L292 | 8 899.73 | 3 584 | 904.34 | | R292 | 10 079.64 | 3 587 | 061.22 | |
| L293 | 8 881.11 | 3 584 | 839.82 | | R293 | 9 982.91 | 3 586 | 959.13 | |
| L294 | 8 850.56 | 3 584 | 775.63 | | R294 | 9 933.04 | 3 586 | 889.71 | |
| L295 | 8 807.97 | 3 584 | 703.57 | | R295 | 9 893.09 | 3 586 | 815.65 | |
| L296 | 8 750.90 | 3 584 | 613.64 | | R296 | 9 876.10 | 3 586 | 755.83 | |
| L297 | 8 684.22 | 3 584 | 526.88 | | R297 | 9 866.94 | 3 586 | 715.24 | |
| L298 | 8 636.18 | 3 584 | 471.13 | | R298 | 9 863.84 | 3 586 | 599.92 | |
| L299 | 8 583.17 | 3 584 | 418.39 | | R299 | 9 846.92 | 3 586 | 491.04 | |
| L300 | 8 355.27 | 3 584 | 245.52 | | R300 | 9 828.33 | 3 586 | 448.59 | |
| L301 | 8 304.35 | 3 584 | 209.40 | | R301 | 9 822.13 | 3 586 | 436.05 | |
| L302 | 7 771.70 | 3 583 | 831.52 | | R302 | 9 809.54 | 3 586 | 410.55 | |
| L303 | 7 744.64 | 3 583 | 794.49 | | R303 | 9 766.02 | 3 586 | 355.33 | |
| L304 | 7 721.07 | 3 583 | 777.55 | | R304 | 9 709.64 | 3 586 | 304.01 | |
| L305 | 7 677.46 | 3 583 | 764.59 | | R305 | 9 642.22 | 3 586 | 255.72 | |
| L306 | 7 506.83 | 3 583 | 642.06 | | R306 | 9 595.44 | 3 586 | 226.80 | |
| | | | | | <div> <div>Vel</div> <div>20</div> <div>Van</div> <div>of</div> <div>25</div> </div> <div>P1217/20</div> | | | | |

| PADRESERVE KOÖRDINATE / ROAD RESERVE CO-ORDINATES | | | | | | |
|---|----------|-------|--------|----------------------------|-----------------|----------------|
| LINKERKANT/LEFT HAND SIDE | | | | REGTERKANT/RIGHT HAND SIDE | | |
| | Y | X | WG 27° | | Y | X |
| L307 | 7 462.14 | 3 583 | 605.69 | R307 | 9 556.15 | 3 586 178.69 |
| L308 | 7 273.27 | 3 583 | 468.50 | R308 | 9 526.03 | 3 586 125.73 |
| L309 | 7 204.72 | 3 583 | 383.68 | R309 | 9 488.28 | 3 585 997.64 |
| L310 | 7 162.20 | 3 583 | 313.88 | R310 | 9 470.12 | 3 585 972.96 |
| L311 | 7 147.94 | 3 583 | 320.90 | R311 | 9 450.08 | 3 585 927.78 |
| L312 | 7 117.53 | 3 583 | 266.20 | R312 | 9 445.54 | 3 585 912.94 |
| L313 | 7 098.07 | 3 583 | 207.75 | R313 | 9 389.70 | 3 585 789.81 |
| L314 | 7 086.71 | 3 583 | 154.23 | R314 | 9 389.21 | 3 585 762.24 |
| L315 | 7 079.10 | 3 583 | 100.24 | R315 | 9 324.60 | 3 585 685.60 |
| L316 | 7 076.82 | 3 583 | 045.25 | R316 | 9 320.58 | 3 585 680.83 |
| L317 | 7 076.59 | 3 582 | 990.26 | R317 | 9 233.98 | 3 585 589.99 |
| L318 | 7 084.63 | 3 582 | 936.19 | R318 | 9 079.60 | 3 585 454.65 |
| L319 | 7 105.00 | 3 582 | 867.94 | R319 | 9 036.10 | 3 585 410.48 |
| L320 | 7 133.71 | 3 582 | 803.66 | R320 | 8 987.82 | 3 585 336.35 |
| L321 | 7 155.95 | 3 582 | 765.44 | R321 | 8 951.84 | 3 585 296.79 |
| L322 | 7 185.78 | 3 582 | 723.57 | R322 | 8 941.34 | 3 585 274.01 |
| L323 | 7 220.90 | 3 582 | 682.47 | R323 | 8 922.98 | 3 585 138.10 |
| L324 | 7 580.04 | 3 582 | 344.33 | R324 | 8 906.88 | 3 585 058.83 |
| L325 | 7 653.51 | 3 582 | 282.72 | R325 | 8 889.42 | 3 584 993.69 |
| L326 | 7 738.02 | 3 582 | 193.87 | R326 | 8 805.61 | 3 584 764.23 |
| L327 | 7 833.37 | 3 582 | 109.25 | R327 | 8 780.48 | 3 584 712.03 |
| L328 | 7 965.57 | 3 581 | 983.00 | R328 | 8 720.86 | 3 584 614.98 |
| L329 | 8 008.43 | 3 581 | 949.56 | R329 | 8 651.93 | 3 584 535.04 |
| L330 | 8 056.10 | 3 581 | 922.19 | R330 | 8 524.41 | 3 584 411.70 |
| L331 | 8 107.27 | 3 581 | 901.99 | R331 | 8 332.36 | 3 584 265.42 |
| L332 | 8 160.04 | 3 581 | 887.78 | R332 | 8 272.81 | 3 584 222.75 |
| L333 | 8 214.60 | 3 581 | 880.35 | R333 | 7 841.94 | 3 583 913.98 |
| L334 | 8 406.68 | 3 581 | 875.42 | R334 | 7 771.26 | 3 583 868.27 |
| L335 | 8 540.87 | 3 581 | 848.26 | R335 | 7 711.86 | 3 583 819.93 |
| L336 | 8 592.11 | 3 581 | 830.52 | R336 | 7 493.37 | 3 583 662.72 |
| L337 | 8 610.94 | 3 581 | 819.41 | R337 | 7 451.15 | 3 583 636.03 |
| L338 | 8 650.50 | 3 581 | 770.78 | R338 | 7 424.98 | 3 583 617.94 |
| L339 | 8 685.71 | 3 581 | 718.11 | R339 | 7 370.50 | 3 583 593.36 |
| L340 | 8 722.88 | 3 581 | 650.57 | R340 | 7 345.59 | 3 583 575.35 |
| L341 | 8 738.81 | 3 581 | 608.77 | R341 | 7 319.33 | 3 583 537.88 |
| L342 | 8 754.18 | 3 581 | 556.24 | R342 | 7 185.72 | 3 583 441.79 |
| L343 | 8 760.38 | 3 581 | 509.08 | R343 | 7 136.98 | 3 583 400.11 |
| L344 | 8 755.40 | 3 581 | 415.73 | R344 | 7 127.39 | 3 583 385.85 |
| L345 | 8 745.98 | 3 581 | 322.00 | R345 | 7 119.22 | 3 583 341.60 |
| L346 | 8 748.73 | 3 581 | 255.43 | R346 | 7 069.37 | 3 583 222.95 |
| L347 | 8 763.51 | 3 581 | 185.24 | R347 | 7 052.57 | 3 583 162.09 |
| L348 | 8 787.93 | 3 581 | 116.39 | R348 | 7 044.79 | 3 583 098.57 |
| L349 | 8 808.01 | 3 581 | 009.13 | R349 | 7 044.85 | 3 583 035.13 |
| L350 | 8 811.22 | 3 580 | 958.65 | R350 | 7 052.66 | 3 582 971.35 |
| L351 | 8 809.06 | 3 580 | 906.43 | R351 | 7 060.20 | 3 582 919.02 |
| L352 | 8 775.02 | 3 580 | 658.23 | R352 | 7 082.25 | 3 582 847.20 |
| L353 | 8 776.75 | 3 580 | 598.54 | R353 | 7 115.58 | 3 582 771.69 |
| L354 | 8 799.99 | 3 580 | 517.86 | R354 | 7 184.82 | 3 582 674.80 |
| L355 | 8 824.12 | 3 580 | 465.72 | R355 | 7 249.10 | 3 582 621.35 |
| L356 | 9 061.44 | 3 580 | 009.15 | R356 | 7 521.30 | 3 582 364.16 |
| L357 | 9 082.77 | 3 579 | 985.68 | R357 | 7 626.63 | 3 582 247.45 |
| | | | | Vel Sheet | 21 Van of | 25 P1217/20 |

| PADRESERWE KOÖRDINATE / ROAD RESERVE CO-ORDINATES | | | | | | | | | | | | | | | | | | | |
|---|-----------|-------|--------|--|----------|-------|--------|--|--|-----|----|-----|----|----------|-------|--|----|--|--|
| LINKERKANT/LEFT HAND SIDE | | | | REGTERKANT/RIGHT HAND SIDE | | | | | | | | | | | | | | | |
| | Y | X | WG 27° | | Y | X | | | | | | | | | | | | | |
| L358 | 9 100.83 | 3 579 | 951.56 | R358 | 7 724.05 | 3 582 | 171.01 | | | | | | | | | | | | |
| L359 | 9 106.61 | 3 579 | 955.61 | R359 | 7 847.17 | 3 582 | 056.13 | | | | | | | | | | | | |
| L360 | 9 115.53 | 3 579 | 923.72 | R360 | 7 957.07 | 3 581 | 946.57 | | | | | | | | | | | | |
| L361 | 9 128.90 | 3 579 | 890.69 | R361 | 8 018.71 | 3 581 | 906.97 | | | | | | | | | | | | |
| L362 | 9 155.66 | 3 579 | 747.07 | R362 | 8 086.29 | 3 581 | 879.29 | | | | | | | | | | | | |
| L363 | 9 163.12 | 3 579 | 592.02 | R363 | 8 147.42 | 3 581 | 861.84 | | | | | | | | | | | | |
| L364 | 9 162.05 | 3 579 | 454.77 | R364 | 8 192.45 | 3 581 | 854.11 | | | | | | | | | | | | |
| L365 | 9 179.57 | 3 578 | 749.73 | R365 | 8 246.06 | 3 581 | 849.14 | | | | | | | | | | | | |
| L366 | 9 206.63 | 3 578 | 705.39 | R366 | 8 395.54 | 3 581 | 847.18 | | | | | | | | | | | | |
| L367 | 9 217.50 | 3 578 | 620.31 | R367 | 8 452.18 | 3 581 | 841.33 | | | | | | | | | | | | |
| L368 | 9 215.58 | 3 578 | 502.30 | R368 | 8 502.87 | 3 581 | 814.44 | | | | | | | | | | | | |
| L369 | 9 226.65 | 3 578 | 475.56 | R369 | 8 573.07 | 3 581 | 758.65 | | | | | | | | | | | | |
| L370 | 9 484.48 | 3 578 | 118.49 | R370 | 8 643.03 | 3 581 | 711.44 | | | | | | | | | | | | |
| L371 | 9 515.48 | 3 578 | 075.55 | R371 | 8 688.72 | 3 581 | 656.42 | | | | | | | | | | | | |
| L372 | 9 563.30 | 3 578 | 040.41 | R372 | 8 694.70 | 3 581 | 641.82 | | | | | | | | | | | | |
| L373 | 9 625.78 | 3 577 | 973.97 | R373 | 8 709.27 | 3 581 | 606.27 | | | | | | | | | | | | |
| L374 | 9 662.12 | 3 577 | 951.41 | R374 | 8 721.54 | 3 581 | 543.74 | | | | | | | | | | | | |
| L375 | 10 176.14 | 3 577 | 769.79 | R375 | 8 716.37 | 3 581 | 425.31 | | | | | | | | | | | | |
| L376 | 10 225.22 | 3 577 | 758.60 | R376 | 8 718.82 | 3 581 | 270.59 | | | | | | | | | | | | |
| L377 | 10 359.67 | 3 577 | 708.99 | R377 | 8 722.97 | 3 581 | 226.49 | | | | | | | | | | | | |
| L378 | 10 432.66 | 3 577 | 671.89 | R378 | 8 759.09 | 3 581 | 102.44 | | | | | | | | | | | | |
| L379 | 10 512.81 | 3 577 | 614.94 | R379 | 8 767.63 | 3 581 | 048.27 | | | | | | | | | | | | |
| L380 | 10 587.58 | 3 577 | 525.54 | R380 | 8 777.00 | 3 580 | 939.25 | | | | | | | | | | | | |
| L381 | 10 614.52 | 3 577 | 468.54 | R381 | 8 734.25 | 3 580 | 706.17 | | | | | | | | | | | | |
| L382 | 10 645.82 | 3 577 | 386.49 | R382 | 8 740.80 | 3 580 | 571.23 | | | | | | | | | | | | |
| L383 | 10 697.17 | 3 577 | 305.62 | R383 | 8 736.96 | 3 580 | 545.33 | | | | | | | | | | | | |
| L384 | 10 713.24 | 3 577 | 272.10 | R384 | 8 746.75 | 3 580 | 510.75 | | | | | | | | | | | | |
| L385 | 10 719.85 | 3 577 | 224.29 | R385 | 8 831.73 | 3 580 | 386.44 | | | | | | | | | | | | |
| L386 | 10 747.95 | 3 577 | 121.52 | R386 | 8 889.43 | 3 580 | 274.55 | | | | | | | | | | | | |
| L387 | 10 823.34 | 3 576 | 921.92 | R387 | 8 916.12 | 3 580 | 227.78 | | | | | | | | | | | | |
| L388 | 10 849.47 | 3 576 | 864.26 | R388 | 8 940.63 | 3 580 | 165.19 | | | | | | | | | | | | |
| L389 | 10 890.35 | 3 576 | 734.83 | R389 | 9 021.00 | 3 580 | 031.65 | | | | | | | | | | | | |
| L390 | 10 917.31 | 3 576 | 686.18 | R390 | 9 052.75 | 3 579 | 964.35 | | | | | | | | | | | | |
| L391 | 10 967.66 | 3 576 | 610.23 | R391 | 9 070.58 | 3 579 | 931.69 | | | | | | | | | | | | |
| L392 | 11 056.06 | 3 576 | 493.02 | R392 | 9 077.26 | 3 579 | 897.88 | | | | | | | | | | | | |
| L393 | 11 121.77 | 3 576 | 421.13 | R393 | 9 114.35 | 3 579 | 816.82 | | | | | | | | | | | | |
| L394 | 11 236.02 | 3 576 | 311.30 | R394 | 9 130.38 | 3 579 | 697.96 | | | | | | | | | | | | |
| L395 | 11 361.25 | 3 576 | 160.09 | R395 | 9 143.03 | 3 579 | 152.09 | | | | | | | | | | | | |
| L396 | 11 382.43 | 3 576 | 119.97 | R396 | 9 150.50 | 3 578 | 704.88 | | | | | | | | | | | | |
| L397 | 11 420.14 | 3 576 | 059.51 | R397 | 9 149.04 | 3 578 | 595.60 | | | | | | | | | | | | |
| L398 | 11 452.01 | 3 575 | 997.89 | R398 | 9 158.45 | 3 578 | 542.14 | | | | | | | | | | | | |
| L399 | 11 484.22 | 3 575 | 894.13 | R399 | 9 221.30 | 3 578 | 402.84 | | | | | | | | | | | | |
| L400 | 11 539.10 | 3 575 | 666.82 | R400 | 9 241.25 | 3 578 | 372.39 | | | | | | | | | | | | |
| L401 | 11 560.43 | 3 575 | 578.49 | R401 | 9 273.19 | 3 578 | 342.50 | | | | | | | | | | | | |
| L402 | 11 586.45 | 3 575 | 493.75 | R402 | 9 348.81 | 3 578 | 251.33 | | | | | | | | | | | | |
| L403 | 11 611.28 | 3 575 | 426.58 | R403 | 9 408.65 | 3 578 | 161.77 | | | | | | | | | | | | |
| L404 | 11 662.47 | 3 575 | 327.60 | R404 | 9 454.95 | 3 578 | 105.69 | | | | | | | | | | | | |
| L405 | 11 745.62 | 3 575 | 182.46 | R405 | 9 490.12 | 3 578 | 063.08 | | | | | | | | | | | | |
| L406 | 11 767.08 | 3 575 | 127.07 | R406 | 9 511.63 | 3 578 | 022.50 | | | | | | | | | | | | |
| L407 | 11 804.81 | 3 574 | 926.41 | R407 | 9 525.73 | 3 578 | 005.09 | | | | | | | | | | | | |
| L408 | 11 820.40 | 3 574 | 870.41 | R408 | 9 605.49 | 3 577 | 953.58 | | | | | | | | | | | | |
| | | | | <table><tr><td>Vel</td><td>22</td><td>Van</td><td>25</td><td>P1217/20</td></tr><tr><td>Sheet</td><td></td><td>of</td><td></td><td></td></tr></table> | | | | | | Vel | 22 | Van | 25 | P1217/20 | Sheet | | of | | |
| Vel | 22 | Van | 25 | P1217/20 | | | | | | | | | | | | | | | |
| Sheet | | of | | | | | | | | | | | | | | | | | |

| PADRESERVE KOÖRDINATE / ROAD RESERVE CO-ORDINATES | | | | | | | | | |
|---|-----------|--------------|--------|------|----------------------------|--------------|-----------|----|----------|
| LINKERKANT/LEFT HAND SIDE | | | | | REGTERKANT/RIGHT HAND SIDE | | | | |
| | Y | X | WG 27° | | | Y | X | | |
| L409 | 11 816.98 | 3 574 817.73 | | R409 | 9 671.03 | 3 577 917.57 | | | |
| L410 | 11 832.34 | 3 574 762.07 | | R410 | 10 361.24 | 3 577 678.83 | | | |
| L411 | 11 822.33 | 3 574 675.06 | | R411 | 10 410.02 | 3 577 654.61 | | | |
| L412 | 11 833.29 | 3 574 555.17 | | R412 | 10 462.20 | 3 577 617.53 | | | |
| L413 | 11 829.96 | 3 574 535.41 | | R413 | 10 501.97 | 3 577 580.10 | | | |
| L414 | 11 862.21 | 3 574 374.02 | | R414 | 10 583.67 | 3 577 460.56 | | | |
| L415 | 11 929.04 | 3 574 227.58 | | R415 | 10 631.90 | 3 577 352.28 | | | |
| L416 | 12 015.56 | 3 574 137.63 | | R416 | 10 650.48 | 3 577 266.38 | | | |
| L417 | 12 055.33 | 3 574 126.02 | | R417 | 10 666.90 | 3 577 223.61 | | | |
| L418 | 12 074.12 | 3 574 109.76 | | R418 | 10 707.45 | 3 577 145.01 | | | |
| L419 | 12 084.70 | 3 574 087.50 | | R419 | 10 813.65 | 3 576 866.38 | | | |
| L420 | 12 129.50 | 3 574 044.37 | | R420 | 10 860.55 | 3 576 729.43 | | | |
| L421 | 12 155.92 | 3 573 996.60 | | R421 | 10 901.84 | 3 576 637.12 | | | |
| L422 | 12 251.43 | 3 573 823.90 | | R422 | 10 935.95 | 3 576 583.29 | | | |
| L423 | 12 469.10 | 3 573 404.51 | | R423 | 10 970.64 | 3 576 541.77 | | | |
| L424 | 12 513.90 | 3 573 318.18 | | R424 | 11 050.52 | 3 576 462.06 | | | |
| L425 | 12 605.82 | 3 573 125.39 | | R425 | 11 184.76 | 3 576 293.54 | | | |
| L426 | 12 655.70 | 3 573 033.45 | | R426 | 11 273.87 | 3 576 192.48 | | | |
| L427 | 12 683.18 | 3 572 966.33 | | R427 | 11 292.83 | 3 576 178.33 | | | |
| L428 | 12 732.97 | 3 572 866.60 | | R428 | 11 350.39 | 3 576 119.22 | | | |
| L429 | 12 766.46 | 3 572 832.44 | | R429 | 11 386.04 | 3 576 040.45 | | | |
| L430 | 12 814.11 | 3 572 723.90 | | R430 | 11 411.89 | 3 575 998.56 | | | |
| L431 | 12 819.79 | 3 572 710.98 | | R431 | 11 433.42 | 3 575 948.10 | | | |
| L432 | 12 881.02 | 3 572 557.89 | | R432 | 11 460.96 | 3 575 861.83 | | | |
| L433 | 12 890.15 | 3 572 522.38 | | R433 | 11 516.54 | 3 575 637.06 | | | |
| L434 | 12 916.72 | 3 572 455.77 | | R434 | 11 529.43 | 3 575 584.95 | | | |
| L435 | 13 126.21 | 3 572 039.02 | | R435 | 11 570.99 | 3 575 450.19 | | | |
| L436 | 13 299.92 | 3 571 790.41 | | R436 | 11 629.42 | 3 575 296.97 | | | |
| L437 | 13 308.67 | 3 571 777.89 | | R437 | 11 640.35 | 3 575 268.32 | | | |
| L438 | 13 362.87 | 3 571 719.80 | | R438 | 11 700.17 | 3 575 148.79 | | | |
| L439 | 13 459.93 | 3 571 639.84 | | R439 | 11 729.65 | 3 575 064.95 | | | |
| L440 | 13 609.28 | 3 571 537.77 | | R440 | 11 742.84 | 3 575 017.68 | | | |
| L441 | 13 643.05 | 3 571 507.35 | | R441 | 11 764.34 | 3 574 857.18 | | | |
| L442 | 13 723.91 | 3 571 410.39 | | R442 | 11 753.35 | 3 574 773.66 | | | |
| L443 | 13 753.95 | 3 571 352.93 | | R443 | 11 750.97 | 3 574 735.25 | | | |
| L444 | 13 781.96 | 3 571 266.36 | | R444 | 11 768.88 | 3 574 696.92 | | | |
| L445 | 13 800.05 | 3 571 167.53 | | R445 | 11 777.00 | 3 574 662.07 | | | |
| L446 | 13 797.40 | 3 571 102.01 | | R446 | 11 780.98 | 3 574 582.12 | | | |
| L447 | 13 796.73 | 3 571 085.60 | | R447 | 11 810.74 | 3 574 438.96 | | | |
| L448 | 13 792.73 | 3 571 058.28 | | R448 | 11 816.90 | 3 574 379.46 | | | |
| L449 | 13 779.66 | 3 570 993.06 | | R449 | 11 829.82 | 3 574 326.10 | | | |
| L450 | 13 756.60 | 3 570 924.07 | | R450 | 11 900.03 | 3 574 198.54 | | | |
| L451 | 13 722.58 | 3 570 847.16 | | R451 | 11 929.44 | 3 574 163.83 | | | |
| L452 | 13 658.62 | 3 570 768.92 | | R452 | 12 004.93 | 3 574 111.65 | | | |
| L453 | 13 591.04 | 3 570 706.73 | | R453 | 12 072.42 | 3 574 050.50 | | | |
| L454 | 13 555.61 | 3 570 666.38 | | R454 | 12 113.00 | 3 574 000.74 | | | |
| L455 | 13 533.83 | 3 570 654.18 | | R455 | 12 171.65 | 3 573 883.92 | | | |
| L456 | 13 512.19 | 3 570 639.76 | | R456 | 12 259.75 | 3 573 725.54 | | | |
| L457 | 13 509.70 | 3 570 645.00 | | R457 | 12 278.99 | 3 573 680.72 | | | |
| L458 | 13 495.20 | 3 570 632.57 | | R458 | 12 305.00 | 3 573 639.31 | | | |
| L459 | 13 473.14 | 3 570 620.22 | | R459 | 12 406.80 | 3 573 445.17 | | | |
| | | | | | Vel Sheet | 23 | Van of | 25 | P1217/20 |

| PADRESERVE KOÖRDINATE / ROAD RESERVE CO-ORDINATES | | | | | | | | | |
|---|-----------|--------------|--------|------|----------------------------|--------------|--------|----|----------|
| LINKERKANT/LEFT HAND SIDE | | | | | REGTERKANT/RIGHT HAND SIDE | | | | |
| | Y | X | WG 27° | | | Y | X | | |
| L460 | 13 398.03 | 3 570 615.03 | | R460 | 12 409.79 | 3 573 430.02 | | | |
| L461 | 13 313.73 | 3 570 580.46 | | R461 | 12 418.01 | 3 573 388.41 | | | |
| L462 | 13 212.89 | 3 570 563.88 | | R462 | 12 439.90 | 3 573 344.75 | | | |
| L463 | 13 131.99 | 3 570 534.65 | | R463 | 12 478.14 | 3 573 285.52 | | | |
| L464 | 13 056.24 | 3 570 488.49 | | R464 | 12 524.08 | 3 573 228.77 | | | |
| L465 | 13 007.82 | 3 570 444.69 | | R465 | 12 559.45 | 3 573 156.48 | | | |
| L466 | 12 968.49 | 3 570 396.92 | | R466 | 12 594.47 | 3 573 060.96 | | | |
| L467 | 12 930.05 | 3 570 333.85 | | R467 | 12 608.72 | 3 573 032.19 | | | |
| L468 | 12 908.55 | 3 570 273.92 | | R468 | 12 612.03 | 3 573 026.79 | | | |
| L469 | 12 894.76 | 3 570 211.55 | | R469 | 12 671.58 | 3 572 929.77 | | | |
| L470 | 12 890.42 | 3 570 148.82 | | R470 | 12 749.33 | 3 572 721.30 | | | |
| L471 | 12 893.61 | 3 570 084.60 | | R471 | 12 754.44 | 3 572 707.61 | | | |
| L472 | 12 959.48 | 3 569 588.79 | | R472 | 12 804.27 | 3 572 631.79 | | | |
| L473 | 12 986.42 | 3 569 435.80 | | R473 | 12 927.43 | 3 572 360.94 | | | |
| L474 | 12 998.90 | 3 569 303.88 | | R474 | 13 012.21 | 3 572 198.29 | | | |
| L475 | 13 016.01 | 3 569 204.71 | | R475 | 13 063.80 | 3 572 090.30 | | | |
| L476 | 13 016.32 | 3 569 171.91 | | R476 | 13 129.89 | 3 571 967.76 | | | |
| L477 | 13 063.60 | 3 568 821.49 | | R477 | 13 208.17 | 3 571 856.17 | | | |
| L478 | 13 077.87 | 3 568 751.94 | | R478 | 13 214.31 | 3 571 846.33 | | | |
| L479 | 13 100.66 | 3 568 689.65 | | R479 | 13 246.34 | 3 571 795.04 | | | |
| L480 | 13 126.32 | 3 568 642.36 | | R480 | 13 268.75 | 3 571 742.06 | | | |
| L481 | 13 174.18 | 3 568 579.67 | | R481 | 13 341.14 | 3 571 687.82 | | | |
| L482 | 13 670.86 | 3 568 046.03 | | R482 | 13 374.36 | 3 571 656.02 | | | |
| L483 | 13 717.32 | 3 567 982.92 | | R483 | 13 542.21 | 3 571 546.41 | | | |
| L484 | 13 741.69 | 3 567 933.58 | | R484 | 13 646.26 | 3 571 458.93 | | | |
| L485 | 13 759.42 | 3 567 883.23 | | R485 | 13 691.49 | 3 571 398.61 | | | |
| L486 | 13 772.84 | 3 567 824.95 | | R486 | 13 744.57 | 3 571 285.86 | | | |
| L487 | 13 780.03 | 3 567 759.07 | | R487 | 13 765.94 | 3 571 192.39 | | | |
| L488 | 13 781.12 | 3 567 720.02 | | R488 | 13 768.75 | 3 571 098.94 | | | |
| L489 | 13 778.62 | 3 567 669.98 | | R489 | 13 766.81 | 3 571 084.86 | | | |
| L490 | 13 771.87 | 3 567 643.93 | | R490 | 13 760.00 | 3 571 035.45 | | | |
| L491 | 13 595.56 | 3 567 183.14 | | R491 | 13 744.72 | 3 570 973.45 | | | |
| L492 | 13 573.34 | 3 567 106.45 | | R492 | 13 722.05 | 3 570 913.67 | | | |
| L493 | 13 561.61 | 3 567 021.20 | | R493 | 13 690.21 | 3 570 859.09 | | | |
| L494 | 13 562.35 | 3 566 948.02 | | R494 | 13 654.62 | 3 570 807.86 | | | |
| L495 | 13 574.02 | 3 566 869.55 | | R495 | 13 580.94 | 3 570 740.39 | | | |
| L496 | 13 597.33 | 3 566 793.10 | | R496 | 13 534.25 | 3 570 714.39 | | | |
| L497 | 13 624.45 | 3 566 732.86 | | R497 | 13 490.91 | 3 570 691.77 | | | |
| L498 | 13 663.54 | 3 566 669.43 | | R498 | 13 459.52 | 3 570 672.78 | | | |
| L499 | 13 730.83 | 3 566 592.02 | | R499 | 13 435.10 | 3 570 659.18 | | | |
| L500 | 13 781.06 | 3 566 550.06 | | R500 | 13 385.50 | 3 570 637.94 | | | |
| L501 | 13 857.72 | 3 566 501.77 | | R501 | 13 286.84 | 3 570 623.13 | | | |
| L502 | 13 915.03 | 3 566 474.32 | | R502 | 13 098.65 | 3 570 556.00 | | | |
| L503 | 13 961.41 | 3 566 447.41 | | R503 | 13 051.89 | 3 570 528.22 | | | |
| L504 | 15 386.91 | 3 565 706.17 | | R504 | 12 995.00 | 3 570 477.32 | | | |
| L505 | 15 437.64 | 3 565 671.07 | | R505 | 12 951.63 | 3 570 428.12 | | | |
| L506 | 15 470.87 | 3 565 644.64 | | R506 | 12 902.45 | 3 570 353.16 | | | |
| L507 | 15 535.80 | 3 565 583.53 | | R507 | 12 849.40 | 3 570 302.99 | | | |
| L508 | 15 577.12 | 3 565 536.14 | | R508 | 12 836.24 | 3 570 259.47 | | | |
| L509 | 15 609.48 | 3 565 492.62 | | R509 | 12 844.84 | 3 570 186.74 | | | |
| L510 | 15 660.22 | 3 565 408.98 | | R510 | 12 861.99 | 3 570 124.67 | | | |
| | | | | | Vel Sheet | 24 | Van of | 25 | P1217/20 |

| PADRESERWE KOÖRDINATE / ROAD RESERVE CO-ORDINATES | | | | | | | |
|---|-----------|--------------|--------|----------------------------|-----------|--------------|--|
| LINKERKANT/LEFT HAND SIDE | | | | REGTERKANT/RIGHT HAND SIDE | | | |
| | Y | X | WG 27° | | Y | X | |
| L511 | 15 663.88 | 3 565 401.01 | | R511 | 12 932.75 | 3 569 603.01 | |
| L512 | 15 690.11 | 3 565 343.90 | | R512 | 12 962.35 | 3 569 362.72 | |
| L513 | 15 701.96 | 3 565 326.97 | | R513 | 13 046.28 | 3 568 764.96 | |
| L514 | 15 713.28 | 3 565 296.74 | | R514 | 13 063.77 | 3 568 706.03 | |
| L515 | 15 713.34 | 3 565 280.20 | | R515 | 13 103.64 | 3 568 629.08 | |
| L516 | 15 725.76 | 3 565 234.45 | | R516 | 13 125.14 | 3 568 594.81 | |
| L517 | 15 737.73 | 3 565 176.83 | | R517 | 13 628.22 | 3 568 057.01 | |
| L518 | 15 744.75 | 3 565 119.93 | | R518 | 13 683.41 | 3 567 986.28 | |
| L519 | 15 754.53 | 3 564 766.64 | | R519 | 13 715.86 | 3 567 922.86 | |
| L520 | 15 766.21 | 3 564 345.32 | | R520 | 13 740.75 | 3 567 844.24 | |
| L521 | 15 768.83 | 3 564 311.13 | | R521 | 13 748.33 | 3 567 806.29 | |
| L522 | 15 772.97 | 3 564 006.92 | | R522 | 13 747.05 | 3 567 758.32 | |
| L523 | 15 777.50 | 3 563 938.13 | | R523 | 13 730.00 | 3 567 624.55 | |
| L524 | 15 788.27 | 3 563 503.73 | | R524 | 13 712.11 | 3 567 562.61 | |
| L525 | 15 795.73 | 3 563 433.64 | | R525 | 13 576.52 | 3 567 203.45 | |
| L526 | 15 808.86 | 3 563 373.95 | | R526 | 13 566.07 | 3 567 174.34 | |
| L527 | 15 837.39 | 3 563 293.67 | | R527 | 13 547.68 | 3 567 115.76 | |
| L528 | 16 387.18 | 3 562 039.29 | | R528 | 13 538.64 | 3 567 053.46 | |
| L529 | 16 419.48 | 3 562 003.36 | | R529 | 13 534.58 | 3 567 007.87 | |
| L530 | 16 431.66 | 3 561 975.88 | | R530 | 13 535.69 | 3 566 947.21 | |
| L531 | 16 436.07 | 3 561 929.47 | | R531 | 13 543.09 | 3 566 882.61 | |
| L532 | 16 469.48 | 3 561 829.39 | | R532 | 13 555.71 | 3 566 823.48 | |
| L533 | 16 479.80 | 3 561 781.04 | | R533 | 13 613.26 | 3 566 670.25 | |
| L534 | 16 483.04 | 3 561 714.38 | | R534 | 13 633.25 | 3 566 638.51 | |
| L535 | 16 490.19 | 3 561 678.40 | | R535 | 13 651.55 | 3 566 619.27 | |
| L536 | 16 493.13 | 3 561 593.27 | | R536 | 13 805.21 | 3 566 500.50 | |
| L537 | 16 493.45 | 3 561 583.94 | | R537 | 13 843.22 | 3 566 479.64 | |
| REGTERKANT/RIGHT HAND SIDE | | | | R538 | 14 827.62 | 3 565 968.80 | |
| | | | | R539 | 14 830.10 | 3 565 956.23 | |
| | | | | R540 | 14 833.65 | 3 565 954.37 | |
| | | | | R541 | 14 845.35 | 3 565 959.59 | |
| | | | | R542 | 15 324.20 | 3 565 711.10 | |
| | | | | R543 | 15 366.46 | 3 565 687.06 | |
| R562 | 15 749.04 | 3 563 797.76 | | R544 | 15 385.00 | 3 565 673.32 | |
| R563 | 15 753.65 | 3 563 782.67 | | R545 | 15 416.15 | 3 565 653.20 | |
| R564 | 15 756.28 | 3 563 502.44 | | R546 | 15 472.01 | 3 565 607.38 | |
| R565 | 15 768.62 | 3 563 382.34 | | R547 | 15 522.49 | 3 565 558.04 | |
| R566 | 15 806.66 | 3 563 285.65 | | R548 | 15 562.63 | 3 565 510.25 | |
| R567 | 16 333.69 | 3 562 080.73 | | R549 | 15 589.76 | 3 565 471.33 | |
| R568 | 16 347.68 | 3 562 039.55 | | R550 | 15 638.07 | 3 565 391.45 | |
| R569 | 16 375.40 | 3 561 986.53 | | R551 | 15 642.74 | 3 565 381.39 | |
| R570 | 16 424.87 | 3 561 869.60 | | R552 | 15 663.10 | 3 565 337.52 | |
| R571 | 16 438.21 | 3 561 829.54 | | R553 | 15 691.18 | 3 565 257.34 | |
| R572 | 16 450.16 | 3 561 776.21 | | R554 | 15 706.49 | 3 565 194.05 | |
| R573 | 16 463.57 | 3 561 578.44 | | R555 | 15 711.55 | 3 565 150.46 | |
| R574 | 16 464.39 | 3 561 566.46 | | R556 | 15 725.77 | 3 564 769.23 | |
| | | | | R557 | 15 727.85 | 3 564 744.73 | |
| | | | | R558 | 15 728.85 | 3 564 732.93 | |
| | | | | R559 | 15 743.95 | 3 564 170.21 | |
| | | | | R560 | 15 745.48 | 3 564 093.77 | |
| | | | | R561 | 15 740.97 | 3 564 008.67 | |
| Vel | | Van | | P1217/20 | | | |
| Sheet | | 25 | | of | | 25 | |