
GOVERNMENT NOTICES • GOEWERMENTSKENNISGEWINGS

DEPARTMENT OF TRANSPORT**NO. 6688****30 September 2025****THE SOUTH AFRICAN NATIONAL ROADS
AGENCY SOC LIMITED****Registration No: 1998/009584/30**

DECLARATION AMENDMENT OF NATIONAL ROAD R67 SECTION 5**AMENDMENT OF DECLARATION No. 305 OF 2012.**

By virtue of section 40(1)(b) of the South African National Roads Agency Limited and the National Roads Act 1998 (Act No. 7 of 1998), I hereby amend Declaration No. 305 of 2012 by substituting paragraph F(IV) of the Schedule, being the descriptive declaration of the route from Whittlesea up to Queenstown, with the accompanying sheets 1 to 16 of Plan No. P1206/20.

In the town of Whittlesea the R67 Section 5 enters the town from the south and follows the street known as Shepstone Street, at time of declaration.

(National Road R67 Section 5: Whittlesea – Queenstown)
MINISTER OF TRANSPORT

DEPARTEMENT VAN VERVOER

NO. 6688

30 September 2025

**DIE SUID-AFRIKAANSE NASIONALE
PADAGENTSKAP MSB BEPERK**Registrasie No: 1998/009584/30

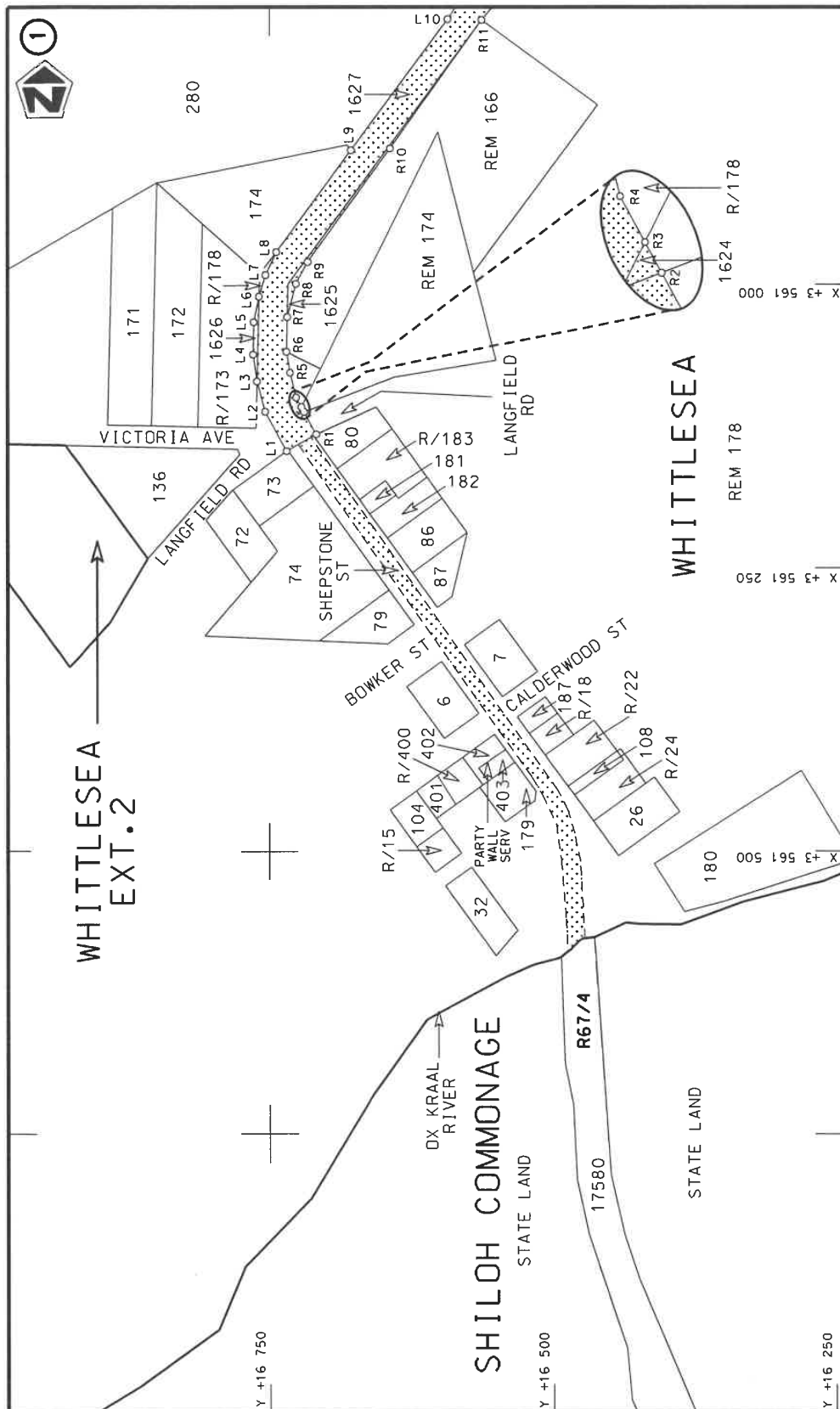
VERKLARING WYSIGING VAN NASIONALE PAD R67 SEKSIE 5

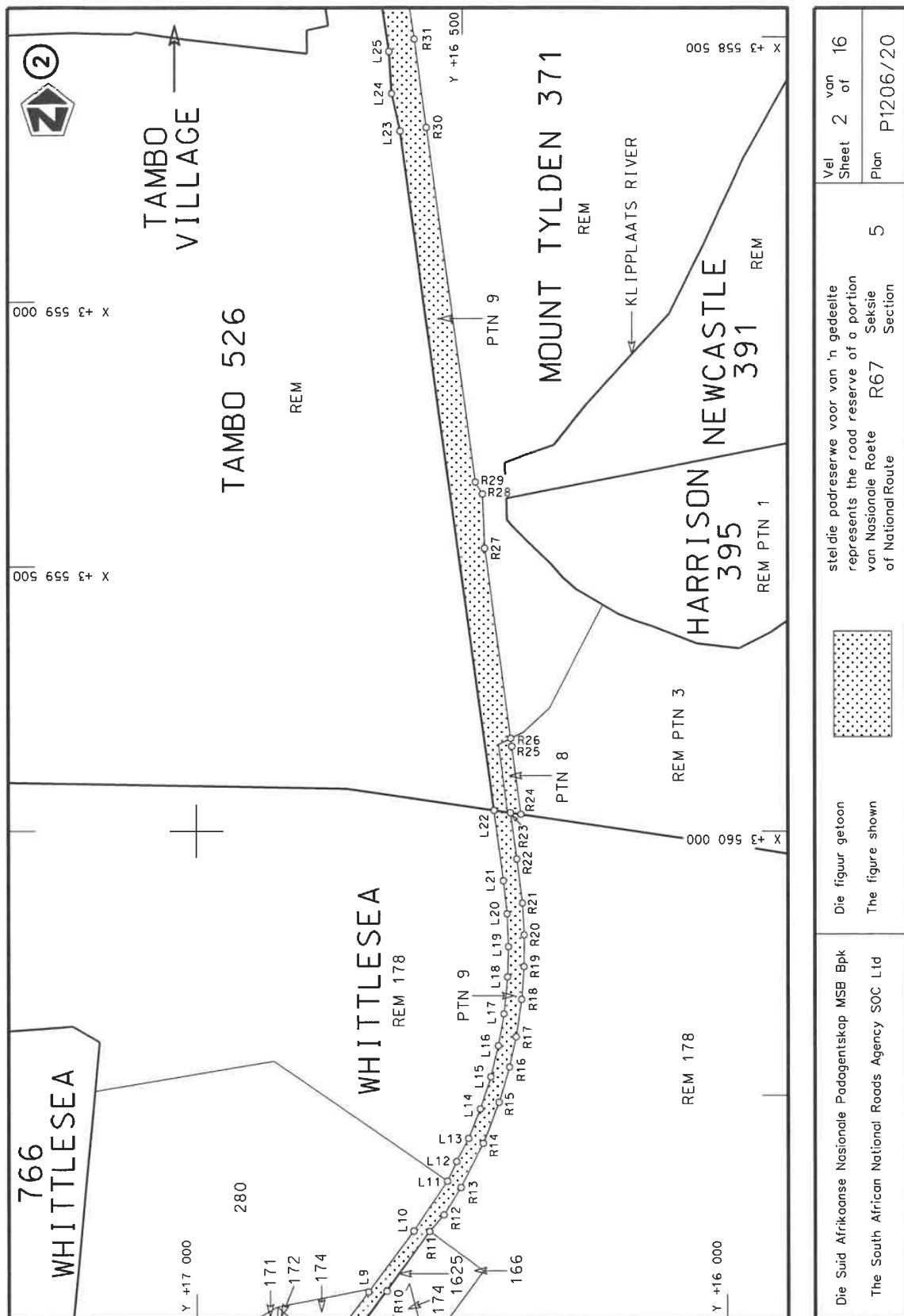
WYSIGING VAN VERKLARING No. 305 VAN 2012.

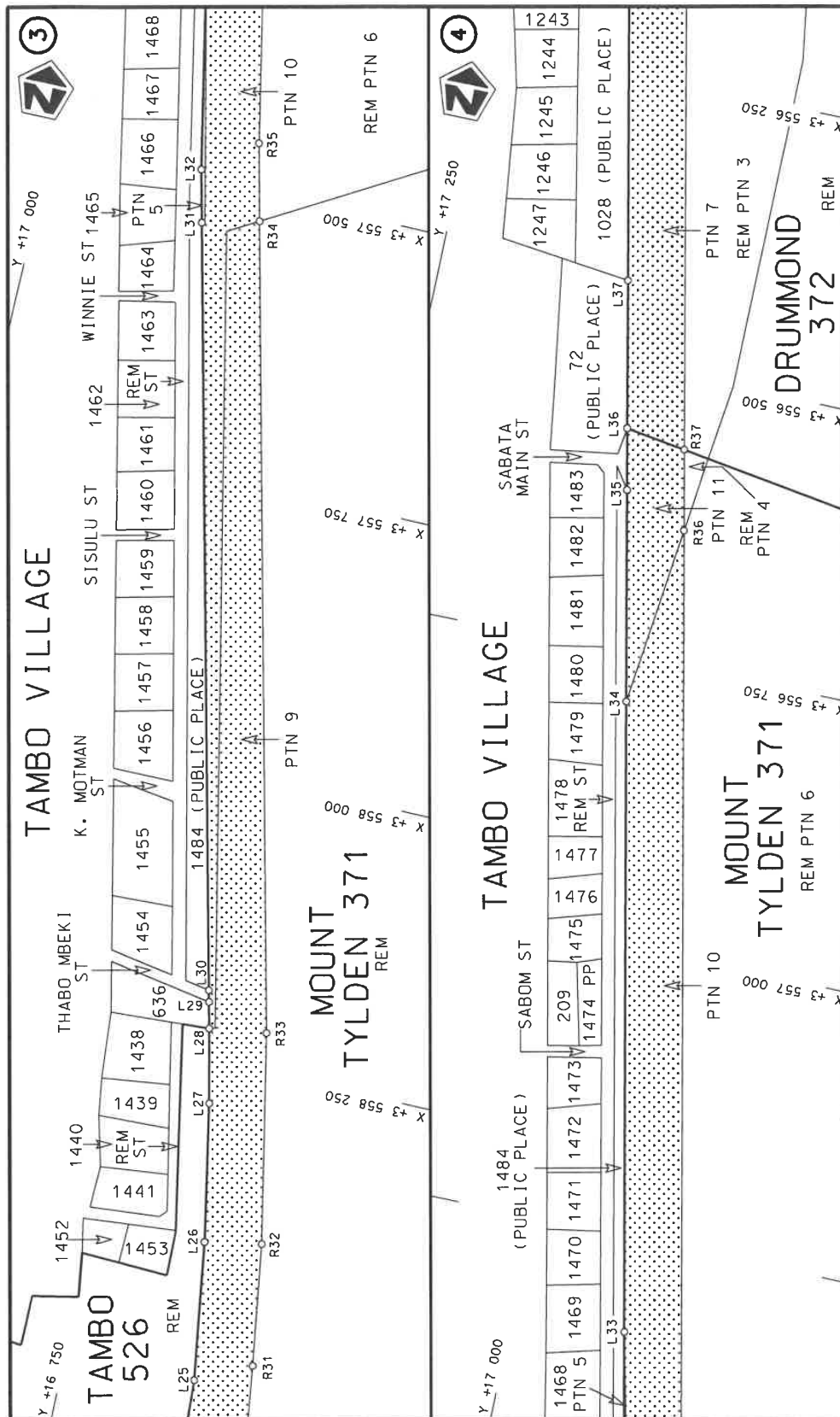
Kragtens Artikel 40(1)(b) van die Suid-Afrikaanse Nasionale Padagentskap Beperk en Nasionale Paaie Wet 1998 (Wet No. 7 van 1998), wysig ek hiermee Verklaring No. 305 van 2012 deur paragraaf F(IV) van die Skedule te vervang, synde die gedeelte van die beskrywende verklaring van die pad vanaf Whittlesea tot by Queenstown, met bygaande velle 1 tot 16 van Plan No. P1206/20.

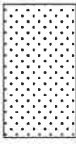
In die dorp Whittlesea kom die R67 Seksie 5 die dorp binne vanuit die suide en volg dan die straat bekend as Shepstonestraat, tydens datum van verklaring.

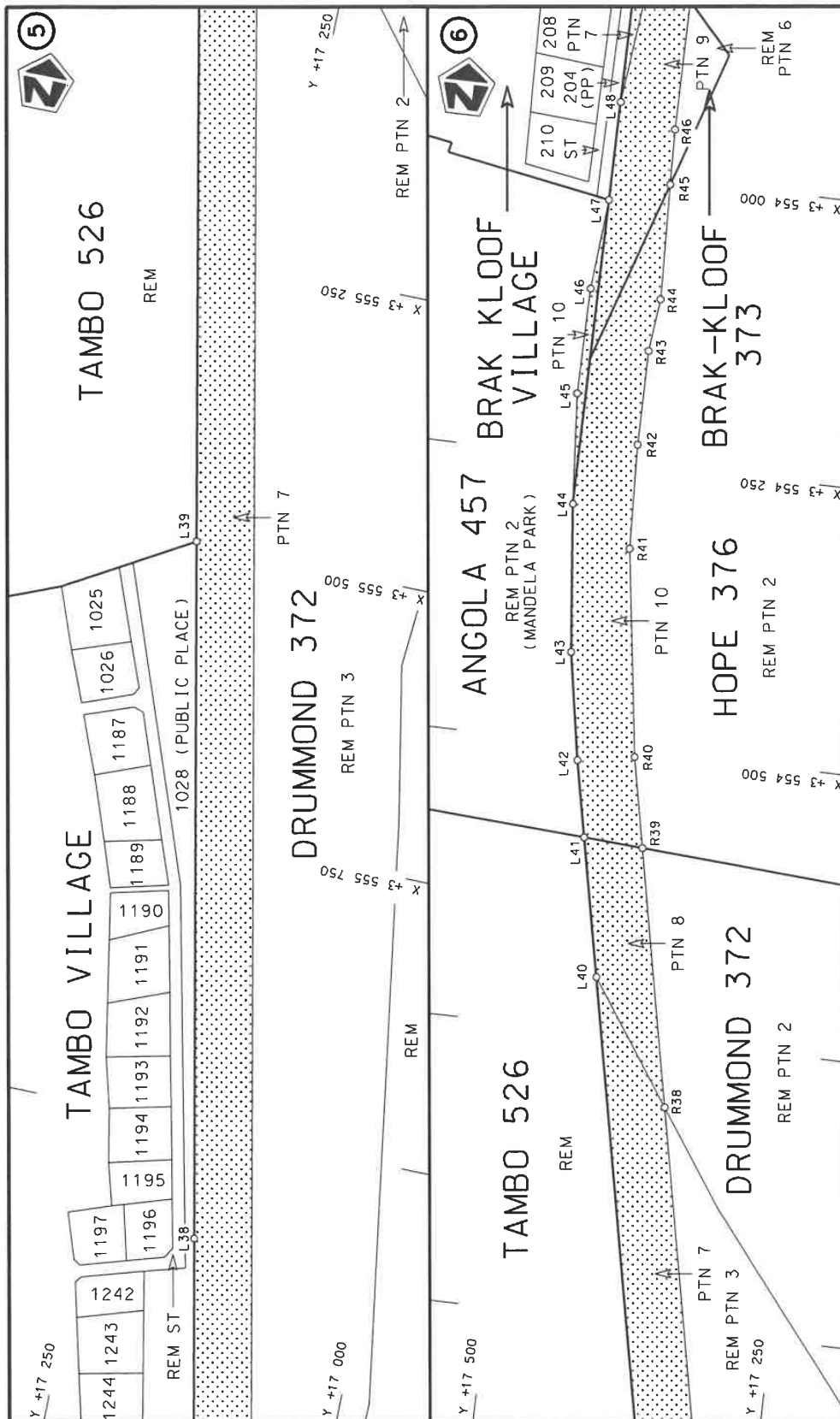
(Nasionale Pad R67 Seksie 5: Whittlesea – Queenstown)
MINISTER VAN VERVOER



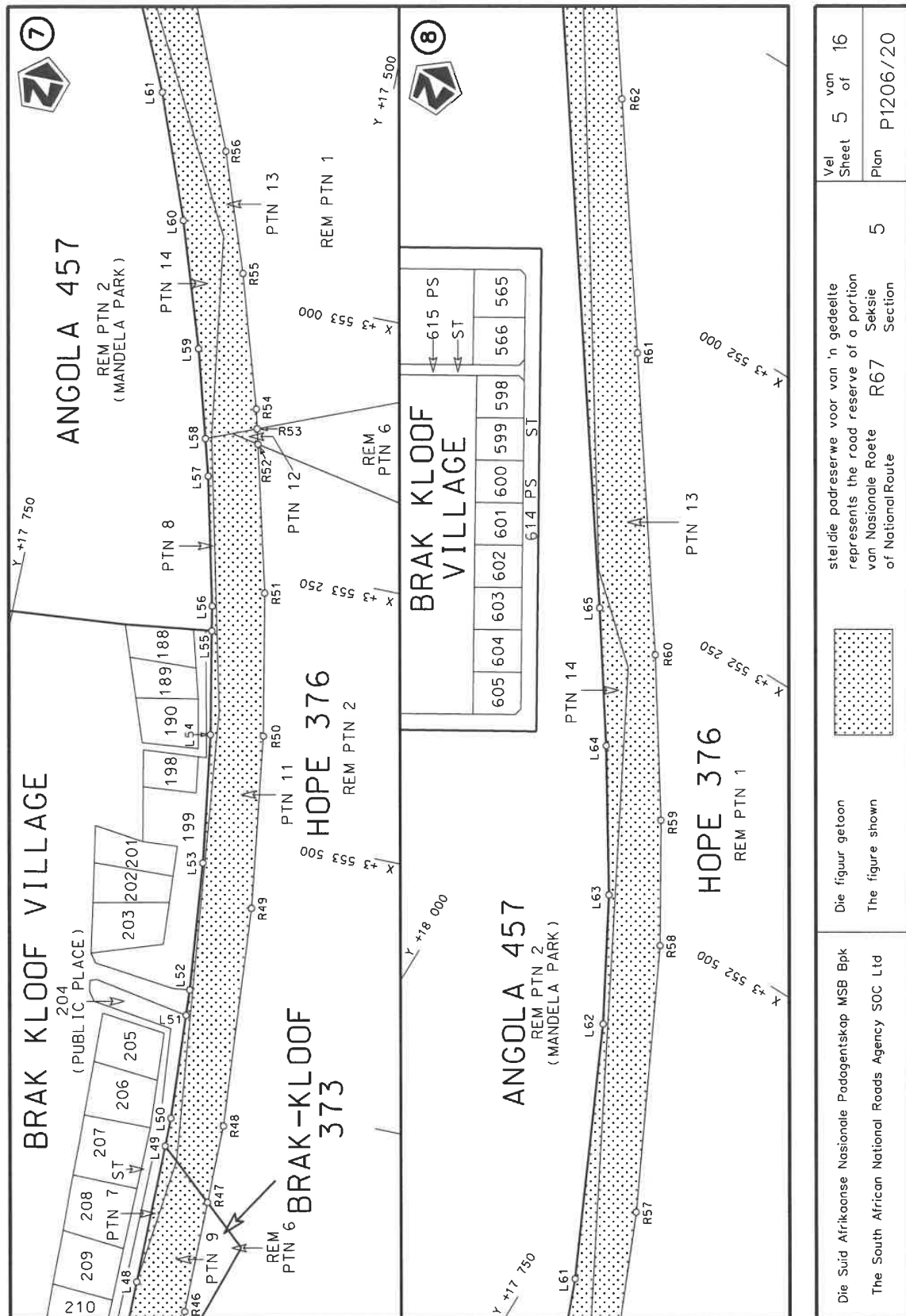


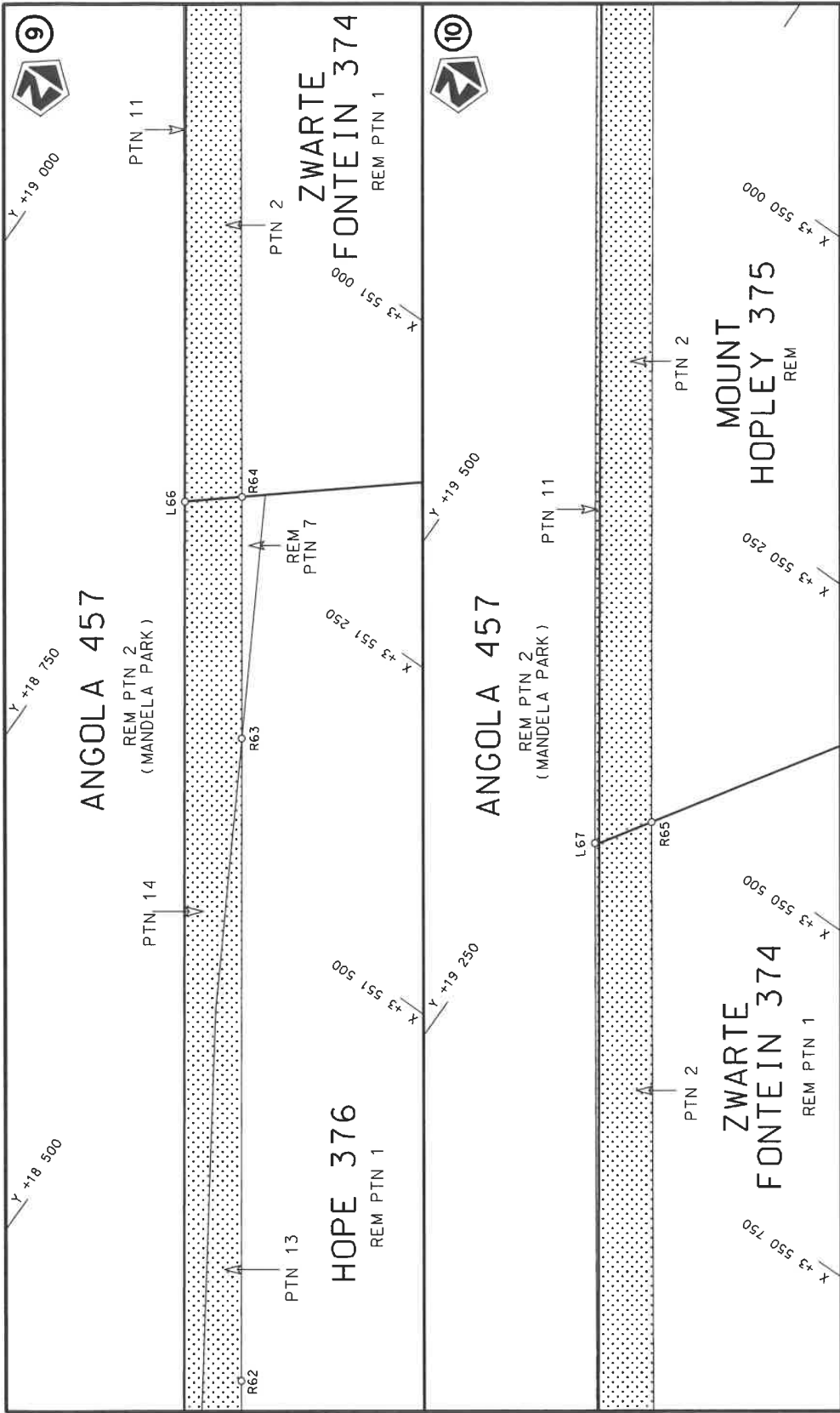


Die Suid Afrikaanse Nasionale Padagentskap MSB Bpk The South African National Roads Agency SOC Ltd	Die figuur getoon The figure shown		stel die padreserwe voor van 'n gedeelte represents the road reserve of a portion van Nasionale Roete R67 of National Route	5	Plan P1206/20	Vel Sheet 3 of 16
---	---------------------------------------	---	--	---	---------------	----------------------

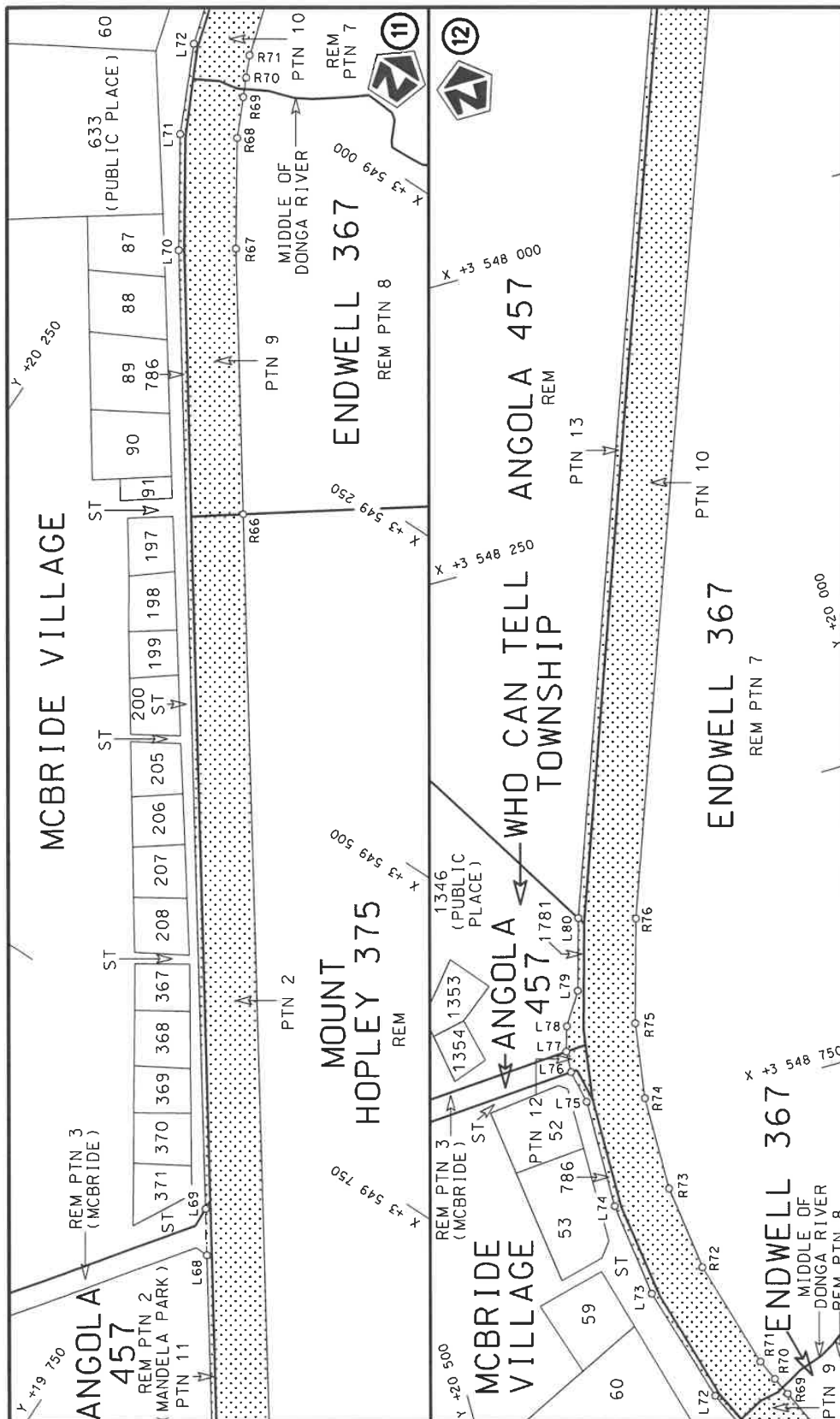


Die Suid Afrikaanse Nasionale Padagentskap MSB Bpk The South African National Roads Agency SOC Ltd	Die figuur getoon The figure shown	<div data-bbox="1268 1075 1348 1209" style="border: 1px solid black; width: 50px; height: 60px; background: repeating-linear-gradient(45deg, transparent, transparent 2px, black 2px, black 4px);"></div> steldie padreserwe voor van 'n gedeelte represents the road reserve of a portion van Nasionale Roete R67 of National Route	Vel Sheet 4 of 16 Plan P1206/20
---	---------------------------------------	---	--

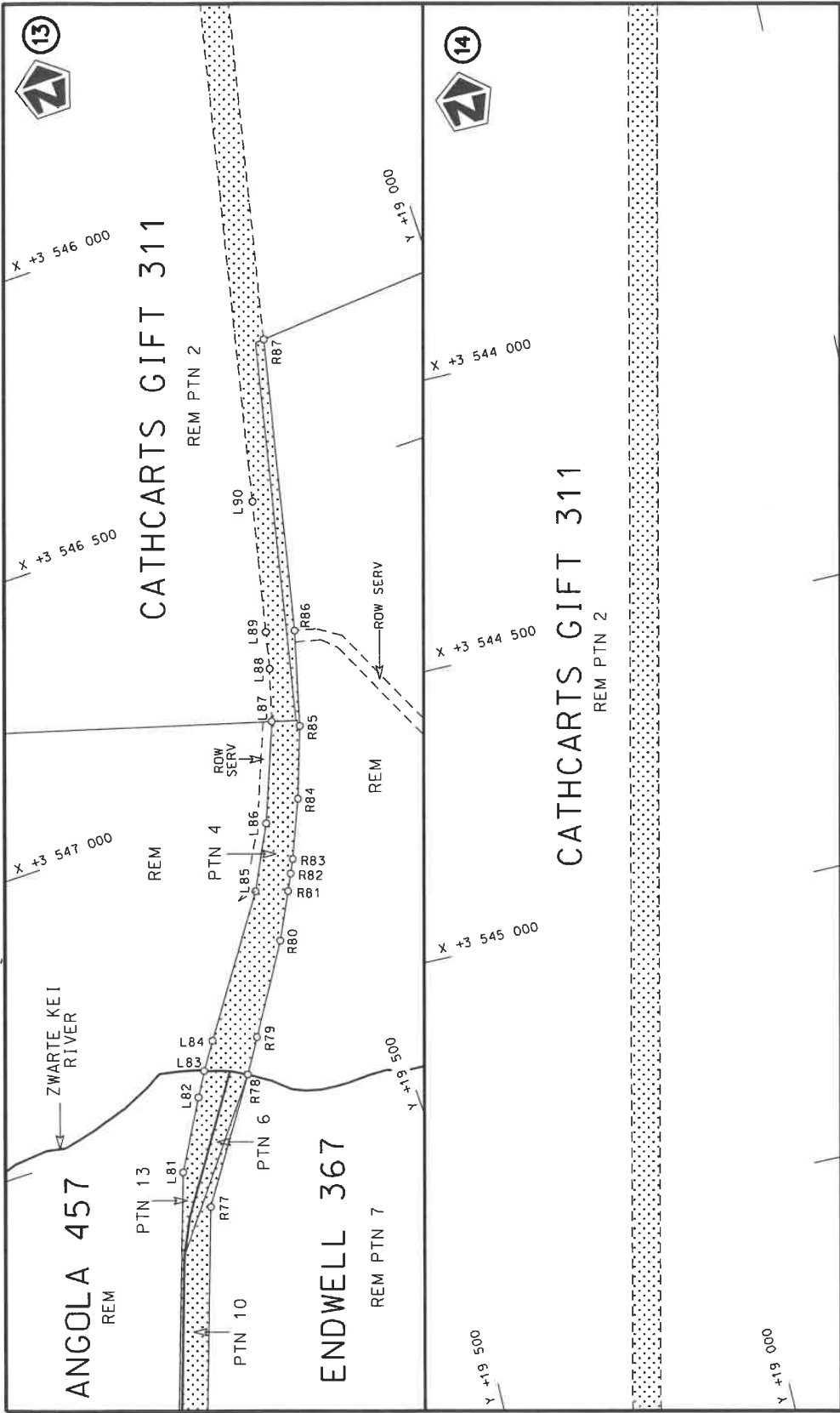


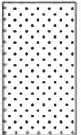


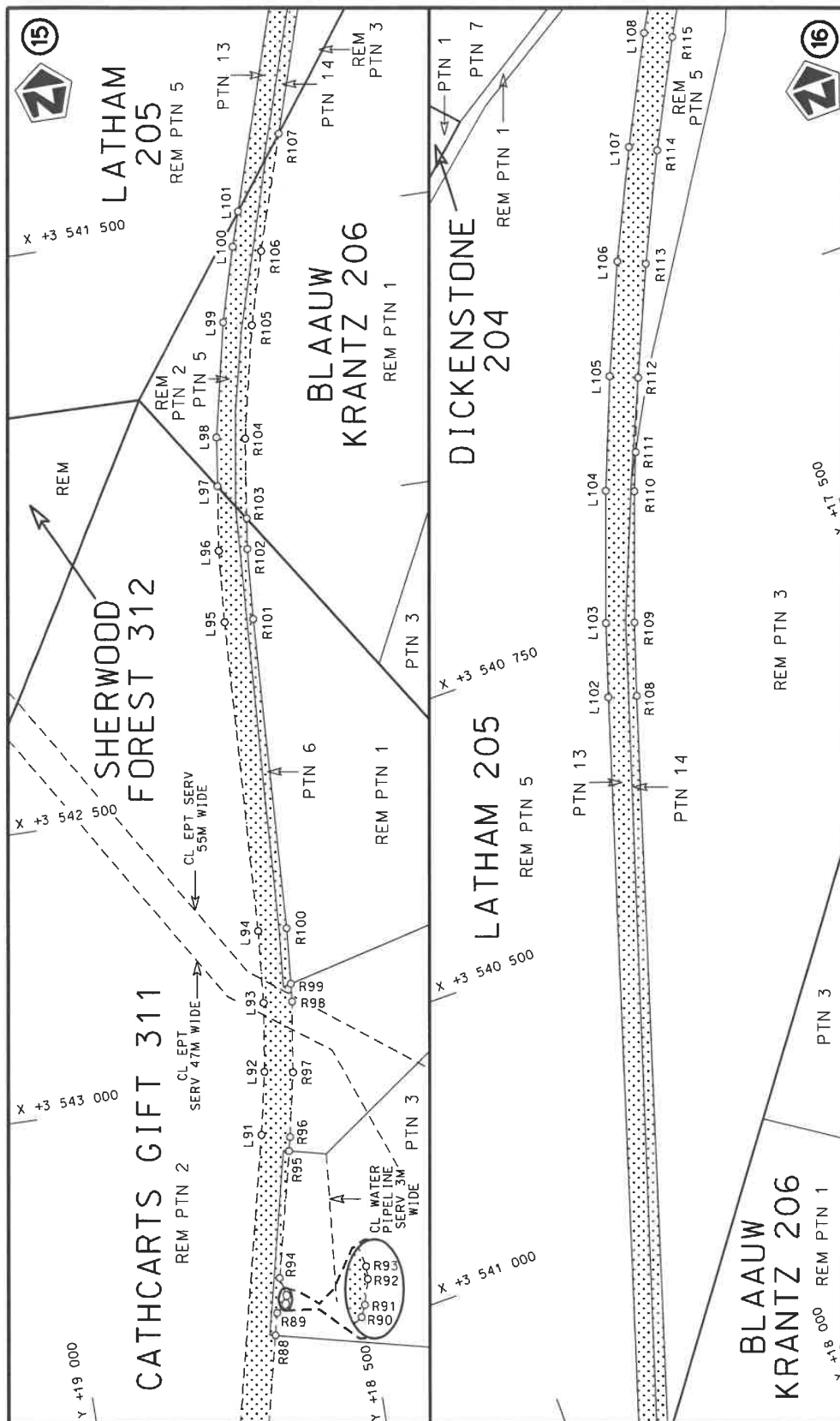
Die Suid Afrikaanse Nasionale Padagentskap MSB Bpk The South African National Roads Agency SOC Ltd		Die figuur getoon The figure shown		steeldie padreserwe voor van 'n gedeelte represents the road reserve of a portion van Nasionale Roete R67 of National Route		Vel Sheet		van of		Plan	
						5		6		P1206/20	




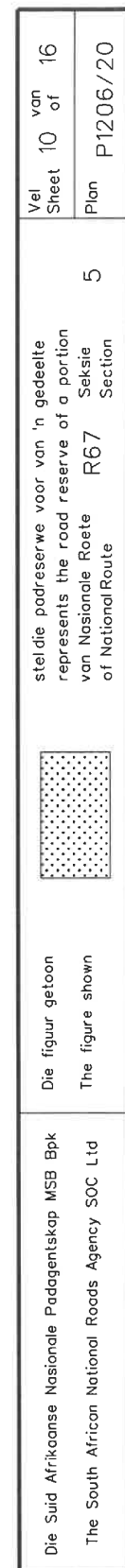
Die Suid Afrikaanse Nasionale Padagentskap MSB Bpk The South African National Roads Agency SOC Ltd	Die figuur getoon The figure shown		steldie padreserwe voor van 'n gedeelte represents the road reserve of a portion van Nasionale Roete of National Route R67 Seksie Section 5	Vel Sheet 7 of 16 Plan P1206/20
---	---------------------------------------	---	--	---

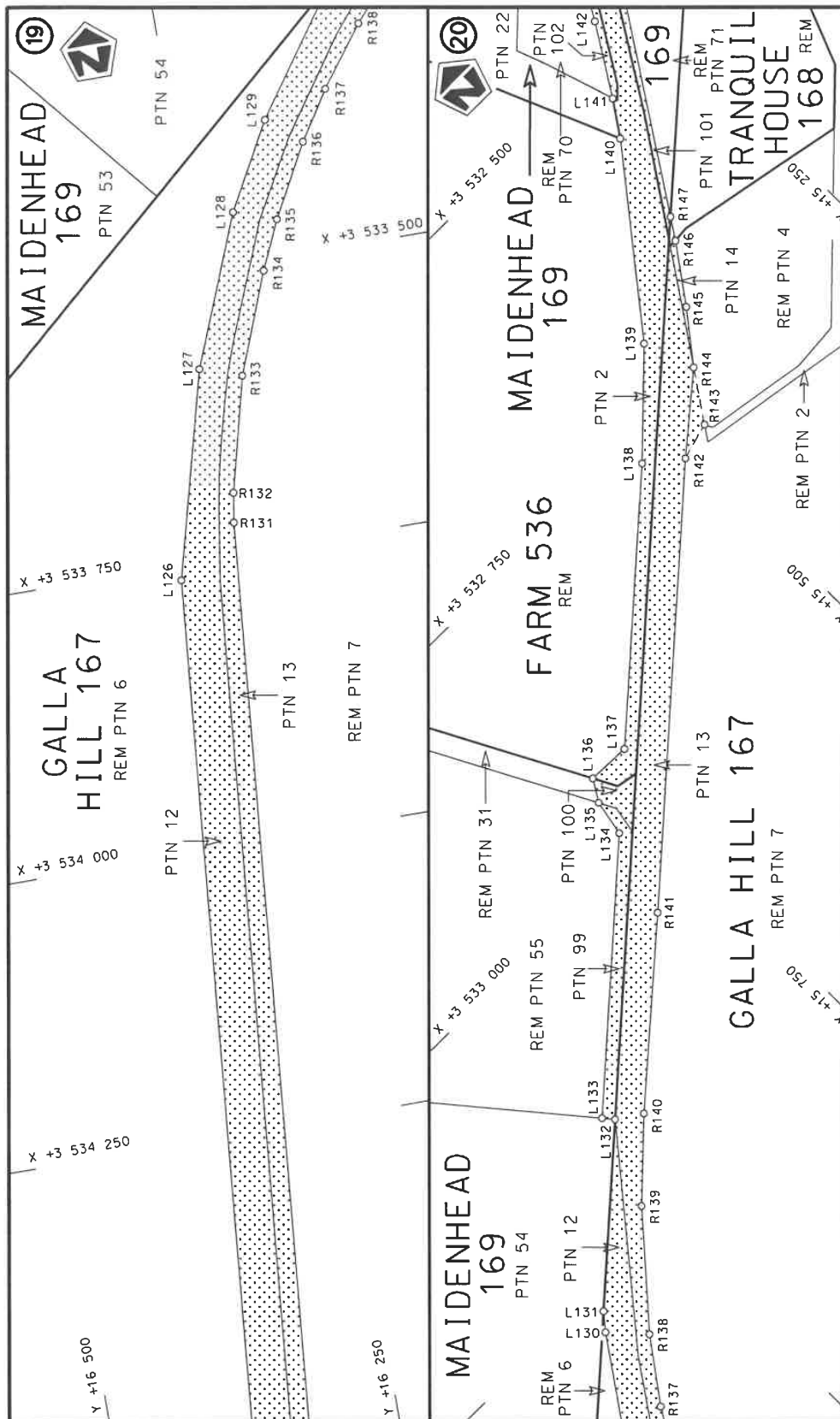



Die Suid Afrikaanse Nasionale Padagentskap MSB Bpk The South African National Roads Agency SOC Ltd	Die figuur getoon The figure shown		steldie padreserwe voor van 'n gedeelte represents the road reserve of a portion van Nasionale Roete R67 of National Route	5	Vel Sheet	van 8 of	16
					Plan	P1206/20	

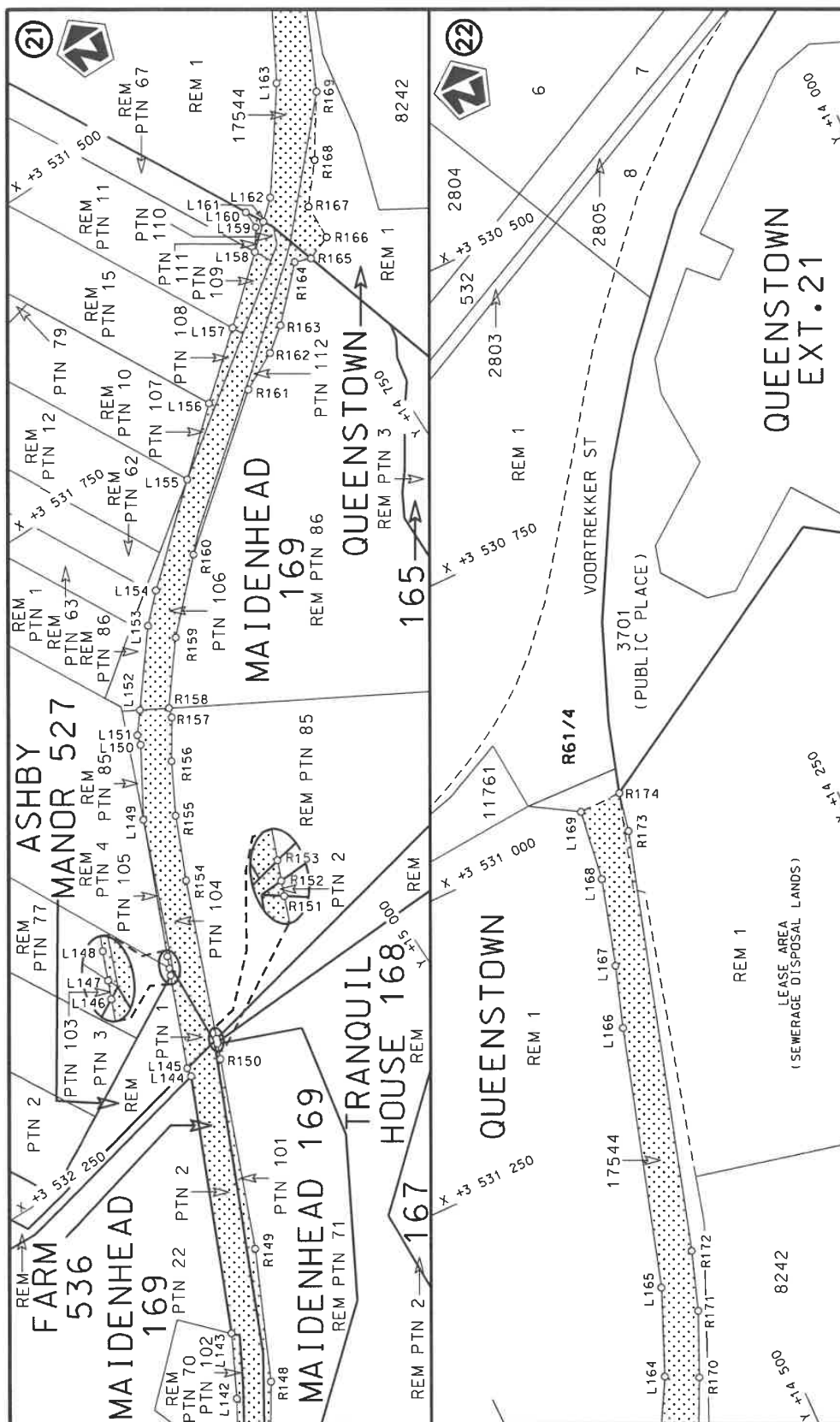


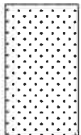
Die Suid Afrikaanse Nasionale Padagentskap MSB Bpk The South African National Roads Agency SOC Ltd	Die figuur getoon The figure shown		stel die padreserwe voor van 'n gedeelte represents the road reserve of a portion van Nasionale Roete R67 of National Route	5	Vel Sheet 9 of 16 Plan P1206/20
---	---------------------------------------	--	--	---	------------------------------------





Die Suid Afrikaanse Nasionale Padagentskap MSB Bpk The South African National Roads Agency SOC Ltd	Die figuur getoon The figure shown		steldie padreserwe voor van 'n gedeelte represents the road reserve of a portion van Nasionale Roete R67 of National Route
	Vel Sheet	11 of	16 Plan P1206/20



Die Suid Afrikaanse Nasionale Padagentskap MSB Bpk The South African National Roads Agency SOC Ltd	Die figuur getoon The figure shown		steldie padreserwe voor van 'n gedeelte represents the road reserve of a portion van Nasionale Roete R67 of National Route	Vel Sheet	van of	16
				Plan	P1206/20	5

PADRESERVE KOÖRDINATE / ROAD RESERVE CO-ORDINATES									
LINKERKANT/LEFT HAND SIDE					REGTERKANT/RIGHT HAND SIDE				
	Y	X	WG 27°			Y	X		
L1	16 734.81	3 561 137.55		R1	16 708.71	3 561 122.76			
L2	16 753.74	3 561 102.72		R2	16 719.46	3 561 102.91			
L3	16 760.92	3 561 076.18		R3	16 721.79	3 561 098.61			
L4	16 764.40	3 561 052.43		R4	16 726.33	3 561 090.22			
L5	16 763.78	3 561 023.89		R5	16 731.88	3 561 068.41			
L6	16 759.23	3 561 001.40		R6	16 735.09	3 561 049.93			
L7	16 753.43	3 560 982.29		R7	16 734.41	3 561 019.31			
L8	16 743.94	3 560 961.98		R8	16 726.52	3 560 990.14			
L9	16 678.04	3 560 872.50		R9	16 716.36	3 560 970.84			
L10	16 592.72	3 560 757.05		R10	16 643.71	3 560 870.92			
L11	16 529.42	3 560 662.55		R11	16 562.79	3 560 757.84			
L12	16 512.18	3 560 625.68		R12	16 535.93	3 560 726.57			
L13	16 489.89	3 560 581.72		R13	16 503.78	3 560 674.42			
L14	16 467.12	3 560 525.77		R14	16 461.98	3 560 591.07			
L15	16 447.46	3 560 465.05		R15	16 431.66	3 560 513.47			
L16	16 432.87	3 560 406.58		R16	16 411.80	3 560 446.80			
L17	16 422.30	3 560 345.92		R17	16 398.96	3 560 389.66			
L18	16 415.26	3 560 276.03		R18	16 388.40	3 560 318.52			
L19	16 413.49	3 560 218.73		R19	16 383.90	3 560 256.58			
L20	16 416.05	3 560 156.55		R20	16 383.51	3 560 196.61			
L21	16 422.87	3 560 094.21		R21	16 386.83	3 560 136.29			
L22	16 440.21	3 559 960.82		R22	16 397.33	3 560 052.90			
L23	16 615.77	3 558 677.93		R23	16 409.21	3 559 965.37			
L24	16 631.56	3 558 607.41		R24	16 389.34	3 559 968.30			
L25	16 636.37	3 558 528.13		R25	16 406.28	3 559 839.80			
L26	16 654.63	3 558 407.70		R26	16 408.36	3 559 824.60			
L27	16 677.77	3 558 288.08		R27	16 457.53	3 559 465.45			
L28	16 692.50	3 558 223.90		R28	16 461.46	3 559 362.94			
L29	16 697.93	3 558 201.24		R29	16 474.64	3 559 340.38			
L30	16 700.33	3 558 191.24		R30	16 566.23	3 558 671.15			
L31	16 857.24	3 557 536.53		R31	16 589.29	3 558 504.29			
L32	16 868.07	3 557 491.32		R32	16 605.54	3 558 398.20			
L33	16 900.63	3 557 332.38		R33	16 642.87	3 558 216.59			
L34	17 011.76	3 556 789.92		R34	16 808.30	3 557 524.02			
L35	17 048.96	3 556 608.07		R35	16 824.11	3 557 457.63			
L36	17 059.78	3 556 555.17		R36	16 992.81	3 556 632.78			
L37	17 085.72	3 556 428.24		R37	17 007.08	3 556 563.32			
L38	17 153.42	3 556 096.99		R38	17 365.83	3 554 808.05			
L39	17 275.83	3 555 498.04		R39	17 411.54	3 554 584.40			
L40	17 438.61	3 554 701.56		R40	17 427.59	3 554 505.90			
L41	17 463.23	3 554 581.09		R41	17 453.10	3 554 325.09			
L42	17 476.83	3 554 514.57		R42	17 456.75	3 554 233.94			
L43	17 493.37	3 554 421.03		R43	17 456.67	3 554 151.31			
L44	17 506.81	3 554 291.89		R44	17 451.63	3 554 105.19			
L45	17 514.41	3 554 195.47		R45	17 454.92	3 554 004.55			
L46	17 513.49	3 554 102.90		R46	17 456.50	3 553 956.19			
L47	17 506.59	3 554 024.06		R47	17 456.46	3 553 850.68			
L48	17 506.50	3 553 937.92		R48	17 456.52	3 553 776.78			
L49	17 506.37	3 553 806.50		R49	17 472.45	3 553 569.64			
L50	17 506.35	3 553 779.68		R50	17 494.68	3 553 407.84			
L51	17 512.24	3 553 681.40		R51	17 520.95	3 553 275.28			
					Vel Sheet	13	Van of	16	P1206/20

PADRESERWE KOÖRDINATE / ROAD RESERVE CO-ORDINATES						
LINKERKANT/LEFT HAND SIDE				REGTERKANT/RIGHT HAND SIDE		
	Y	X	WG 27°		Y	X
L52	17 513.70	3 553 657.09		R52	17 555.98	3 553 139.03
L53	17 526.13	3 553 537.04		R53	17 559.61	3 553 124.94
L54	17 543.86	3 553 416.78		R54	17 564.19	3 553 106.91
L55	17 562.55	3 553 320.59		R55	17 602.83	3 552 984.08
L56	17 567.03	3 553 297.52		R56	17 642.21	3 552 874.76
L57	17 595.71	3 553 178.14		R57	17 696.14	3 552 748.81
L58	17 605.59	3 553 143.97		R58	17 808.09	3 552 521.57
L59	17 629.20	3 553 062.20		R59	17 869.04	3 552 419.85
L60	17 668.05	3 552 946.75		R60	17 954.91	3 552 289.02
L61	17 712.28	3 552 832.55		R61	18 117.65	3 552 054.43
L62	17 815.07	3 552 612.72		R62	18 254.97	3 551 857.56
L63	17 873.82	3 552 505.57		R63	18 579.20	3 551 392.77
L64	17 949.45	3 552 386.47		R64	18 700.85	3 551 218.38
L65	18 022.48	3 552 278.29		R65	19 194.58	3 550 517.35
L66	18 739.49	3 551 250.37		R66	20 028.21	3 549 322.44
L67	19 224.93	3 550 561.25		R67	20 161.26	3 549 131.73
L68	19 698.04	3 549 883.09		R68	20 213.66	3 549 050.34
L69	19 721.44	3 549 849.56		R69	20 228.86	3 549 017.54
L70	20 202.26	3 549 160.34		R70	20 236.07	3 549 001.94
L71	20 257.15	3 549 074.80		R71	20 244.29	3 548 984.04
L72	20 290.68	3 549 002.28		R72	20 271.32	3 548 890.60
L73	20 320.22	3 548 901.17		R73	20 280.87	3 548 816.27
L74	20 330.66	3 548 818.52		R74	20 279.92	3 548 734.23
L75	20 329.56	3 548 723.60		R75	20 270.42	3 548 668.75
L76	20 335.56	3 548 695.00		R76	20 245.18	3 548 580.37
L77	20 334.78	3 548 676.55		R77	19 908.71	3 547 659.31
L78	20 328.32	3 548 655.24		R78	19 770.80	3 547 459.93
L79	20 310.75	3 548 627.87		R79	19 733.95	3 547 402.78
L80	20 293.21	3 548 566.50		R80	19 639.13	3 547 255.64
L81	19 935.05	3 547 585.79		R81	19 597.61	3 547 177.56
L82	19 866.05	3 547 469.66		R82	19 583.19	3 547 149.77
L83	19 841.41	3 547 428.73		R83	19 570.99	3 547 126.76
L84	19 809.70	3 547 383.08		R84	19 527.41	3 547 029.39
L85	19 651.80	3 547 158.90		R85	19 482.33	3 546 909.19
L86	19 594.75	3 547 051.96		R86	19 435.95	3 546 747.42
L87	19 526.77	3 546 885.36		R87	19 319.41	3 546 245.08
L88	19 499.63	3 546 796.45		R88	18 667.91	3 543 436.72
L89	19 484.61	3 546 732.90		R89	18 658.99	3 543 398.26
L90	19 431.49	3 546 508.19		R90	18 642.55	3 543 387.01
L91	18 637.85	3 543 085.89		R91	18 641.01	3 543 383.56
L92	18 615.86	3 542 977.23		R92	18 637.84	3 543 371.80
L93	18 598.86	3 542 857.87		R93	18 637.79	3 543 369.52
L94	18 588.89	3 542 731.98		R94	18 645.14	3 543 338.58
L95	18 563.37	3 542 189.01		R95	18 594.70	3 543 121.16
L96	18 554.45	3 542 064.16		R96	18 589.15	3 543 097.23
L97	18 539.30	3 541 952.34		R97	18 566.63	3 542 985.96
L98	18 528.01	3 541 867.82		R98	18 549.16	3 542 863.36
L99	18 485.67	3 541 670.77		R99	18 546.67	3 542 831.98
L100	18 449.23	3 541 542.66		R100	18 538.97	3 542 734.78
L101	18 430.75	3 541 483.42		R101	18 513.44	3 542 191.48
L102	17 999.74	3 540 102.44		R102	18 504.67	3 542 068.88
				Vel Sheet	14 Van of 16	P1206/20

PADRESERVE KOÖRDINATE / ROAD RESERVE CO-ORDINATES						
LINKERKANT/LEFT HAND SIDE				REGTERKANT/RIGHT HAND SIDE		
	Y	X	WG 27°		Y	X
L103	17 959.75	3 539 979.01		R103	18 497.50	3 542 015.60
L104	17 882.04	3 539 761.11		R104	18 478.85	3 541 876.93
L105	17 808.04	3 539 574.69		R105	18 437.20	3 541 683.00
L106	17 727.88	3 539 390.56		R106	18 401.46	3 541 557.41
L107	17 641.72	3 539 209.17		R107	18 339.79	3 541 359.83
L108	17 549.67	3 539 030.70		R108	17 951.90	3 540 116.96
L109	17 487.87	3 538 918.43		R109	17 912.35	3 539 994.92
L110	17 451.77	3 538 855.28		R110	17 835.30	3 539 778.87
L111	17 374.79	3 538 725.16		R111	17 809.92	3 539 714.93
L112	17 334.28	3 538 660.49		R112	17 761.84	3 539 593.81
L113	17 197.60	3 538 438.96		R113	17 682.33	3 539 411.20
L114	17 116.33	3 538 307.09		R114	17 596.88	3 539 231.29
L115	17 119.16	3 538 305.58		R115	17 505.57	3 539 054.28
L116	17 109.27	3 538 290.16		R116	17 443.57	3 538 941.72
L117	17 095.15	3 538 286.33		R117	17 408.06	3 538 879.57
L118	16 884.29	3 537 944.29		R118	17 308.76	3 538 714.34
L119	16 853.72	3 537 868.64		R119	17 193.22	3 538 527.04
L120	16 843.21	3 537 853.27		R120	17 182.12	3 538 509.18
L121	16 829.37	3 537 825.34		R121	16 939.98	3 538 116.39
L122	16 716.86	3 537 659.38		R122	16 815.35	3 537 930.43
L123	16 656.60	3 537 526.34		R123	16 790.54	3 537 892.80
L124	16 650.43	3 537 494.96		R124	16 793.79	3 537 891.43
L125	16 515.26	3 536 008.85		R125	16 775.22	3 537 864.40
L126	16 310.67	3 533 763.46		R126	16 699.14	3 537 760.32
L127	16 263.22	3 533 584.01		R127	16 652.78	3 537 669.63
L128	16 210.66	3 533 453.78		R128	16 608.75	3 537 540.85
L129	16 169.42	3 533 379.05		R129	16 600.64	3 537 499.58
L130	16 100.46	3 533 281.32		R130	16 463.63	3 535 994.36
L131	16 088.53	3 533 267.23		R131	16 256.68	3 533 721.51
L132	15 961.33	3 533 156.40		R132	16 252.57	3 533 695.76
L133	15 968.70	3 533 147.43		R133	16 227.26	3 533 596.09
L134	15 779.77	3 532 982.81		R134	16 193.03	3 533 508.86
L135	15 773.58	3 532 951.23		R135	16 173.99	3 533 466.55
L136	15 761.97	3 532 932.49		R136	16 139.98	3 533 403.64
L137	15 724.03	3 532 934.26		R137	16 112.82	3 533 361.58
L138	15 534.99	3 532 769.73		R138	16 074.49	3 533 310.11
L139	15 459.10	3 532 697.11		R139	15 999.21	3 533 226.22
L140	15 346.14	3 532 556.46		R140	15 939.83	3 533 170.70
L141	15 325.85	3 532 527.13		R141	15 805.80	3 533 055.61
L142	15 288.92	3 532 468.56		R142	15 505.03	3 532 793.63
L143	15 261.69	3 532 417.91		R143	15 472.09	3 532 784.91
L144	15 169.00	3 532 209.21		R144	15 443.32	3 532 742.94
L145	15 168.16	3 532 201.51		R145	15 410.10	3 532 701.17
L146	15 136.23	3 532 125.30		R146	15 375.54	3 532 653.63
L147	15 133.76	3 532 119.46		R147	15 363.82	3 532 635.88
L148	15 129.59	3 532 109.58		R148	15 255.64	3 532 472.06
L149	15 082.30	3 531 997.61		R149	15 203.96	3 532 366.63
L150	15 048.77	3 531 941.10		R150	15 139.32	3 532 210.34
L151	15 046.58	3 531 932.50		R151	15 134.22	3 532 197.70
L152	15 032.78	3 531 915.19		R152	15 133.79	3 532 196.64
L153	14 986.76	3 531 856.98		R153	15 132.56	3 532 193.62
				Vel Sheet	15 Van of 16	P1206/20

This gazette is also available free online at www.gpwonline.co.za