
GOVERNMENT NOTICES • GOEWERMENTSKENNISGEWINGS

DEPARTMENT OF TRANSPORT

NO. 6657

19 September 2025

**THE SOUTH AFRICAN NATIONAL ROADS
AGENCY SOC LIMITED**Registration No: 1998/009584/30

DECLARATION AMENDMENT OF NATIONAL ROAD R511 SECTION 2

AMENDMENT OF DECLARATION No. 784 OF 2012.

By virtue of section 40(1)(b) of the South African National Roads Agency Limited and the National Roads Act 1998 (Act No. 7 of 1998), I hereby amend Declaration No. 784 of 2012 by substituting paragraph O(I), O(II) and O(III) of the Schedule, being the descriptive declaration of the route from the Gauteng / North West Provincial Border up to Brits, with the accompanying sheets 1 to 16 of Plan No. P1218/20.

In the town of Brits the R511 Section 2 enters the town from the South and then follows the street known as Hendrik Verwoerd Avenue up to the intersection with the street known as Van Velden Street, at the time of declaration.

(National Road R511 Section 2: Gauteng / North West Provincial Border - Brits)
MINISTER OF TRANSPORT

DEPARTEMENT VAN VERVOER

NO. 6657

19 September 2025

**DIE SUID-AFRIKAANSE NASIONALE
PADAGENTSKAP MSB BEPERK**

Registrasie No: 1998/009584/30

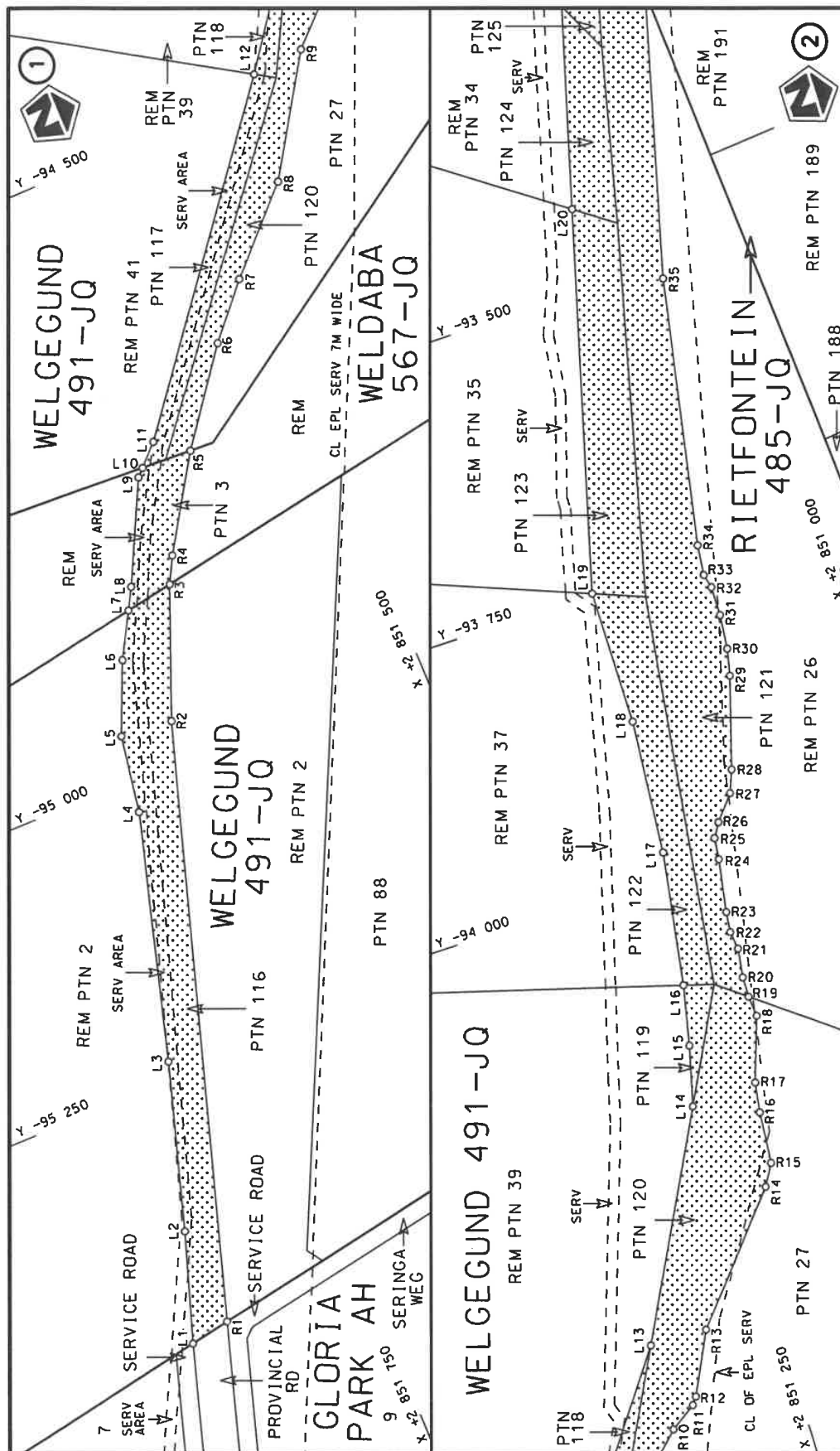
VERKLARING WYSIGING VAN NASIONALE PAD R511 SEKSIE 2


WYSIGING VAN VERKLARING No. 784 VAN 2012.

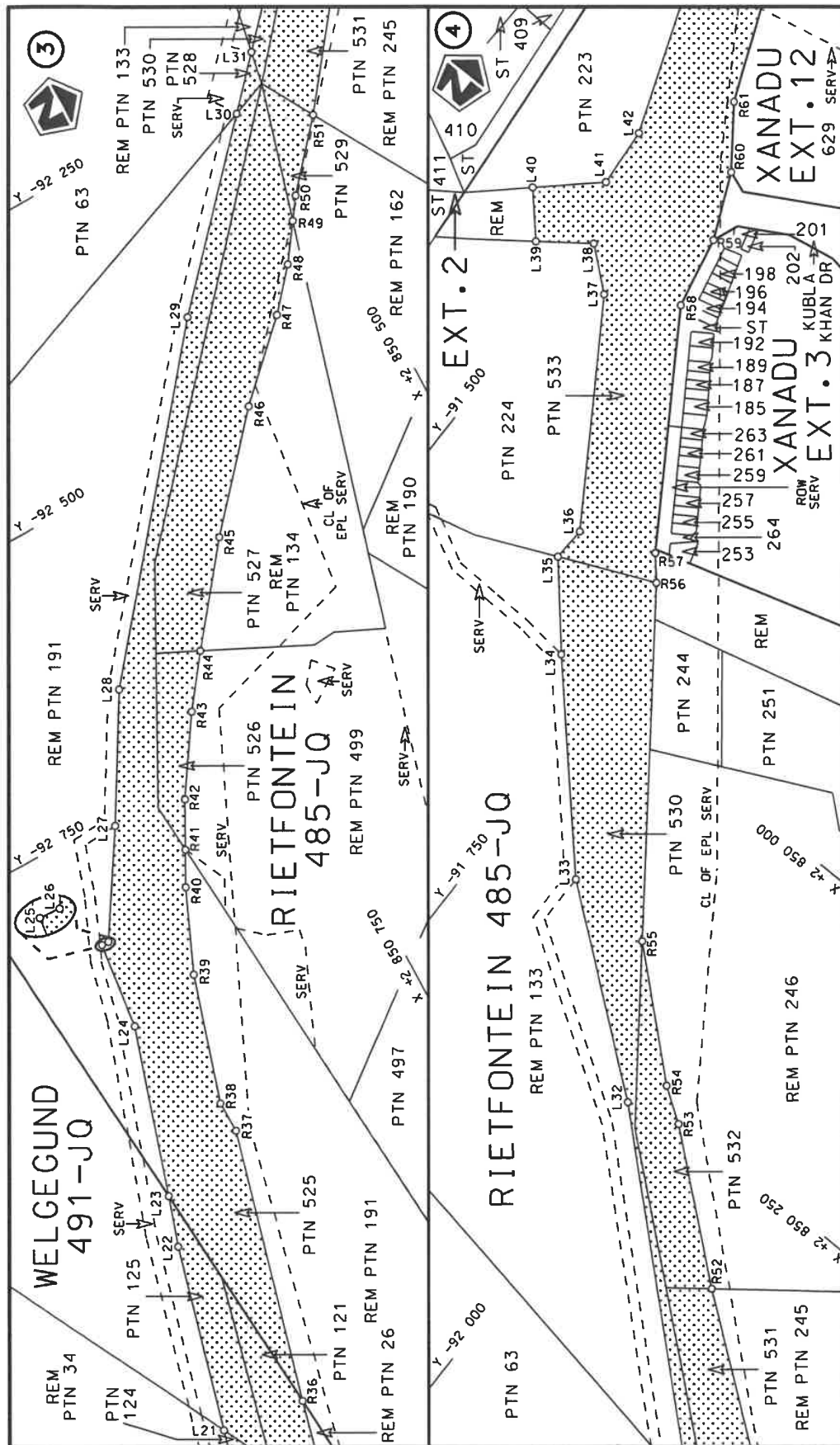
Kragtens Artikel 40(1)(b) van die Suid-Afrikaanse Nasionale Padagentskap Beperk en Nasionale Paaie Wet 1998 (Wet No. 7 van 1998), wysig ek hiermee Verklaring No. 784 van 2012 deur paragraaf O(I), O(II) en O(III) van die Skedule te vervang, synde die gedeelte van die beskrywende verklaring van die pad vanaf die Gauteng / Noordwes Provinsiale Grens tot by Brits, met bygaande velle 1 tot 16 van Plan No. P1218/20.

In die dorp van Brits kom die R511 Seksie 2 die dorp binne vanuit die Suide en volg dan die straat bekend as Hendrik Verwoerdweg to by die interseksie met die straat bekend as Van Velden Straat, tydens datum van verklaring.

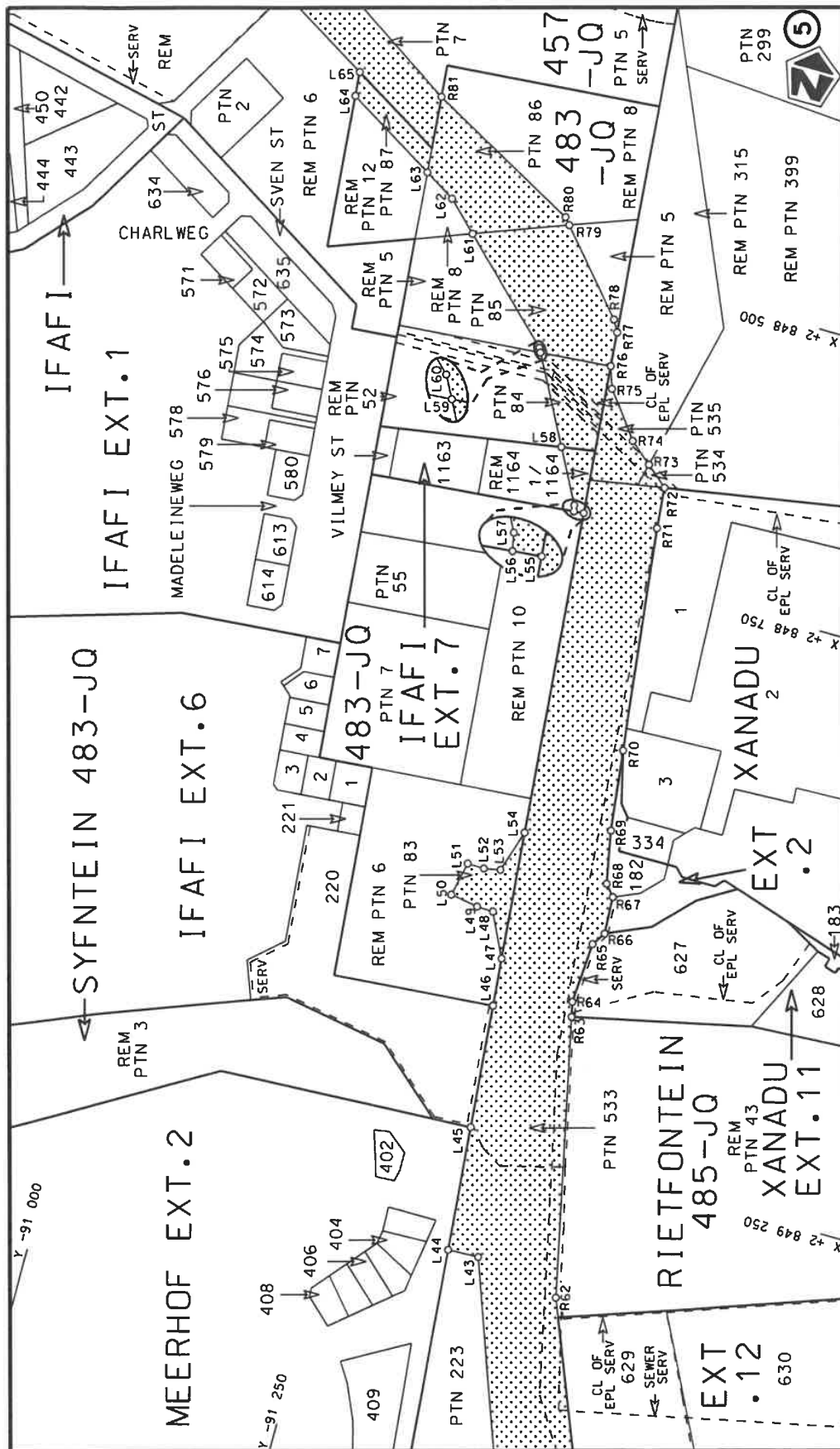
(Nasionale Pad R511 Seksie 2: Gauteng / Noordwes Provinsiale Grens – Brits)
MINISTER VAN VERVOER



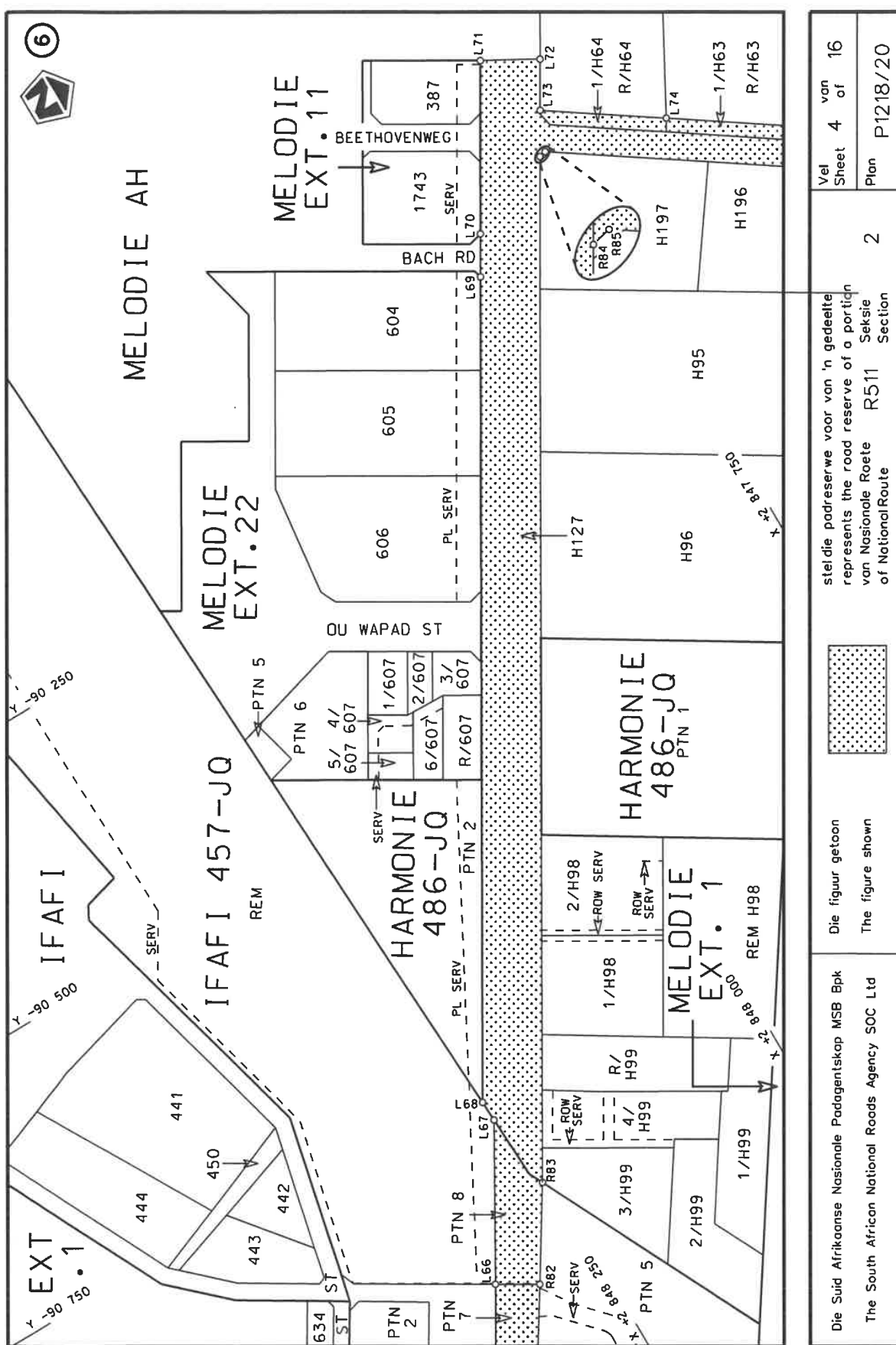
Die Suid Afrikaanse Nasionale Podagentskap MSB Bpk	Die figuur getoon		stel die podreserwe voor van 'n gedeelte represents the road reserve of a portion van Nasionale Roete R511 Seksie of National Route of Section	Vel Sheet	1 of	16
The South African National Roads Agency SOC Ltd	The figure shown			2	Plan	P1218/20

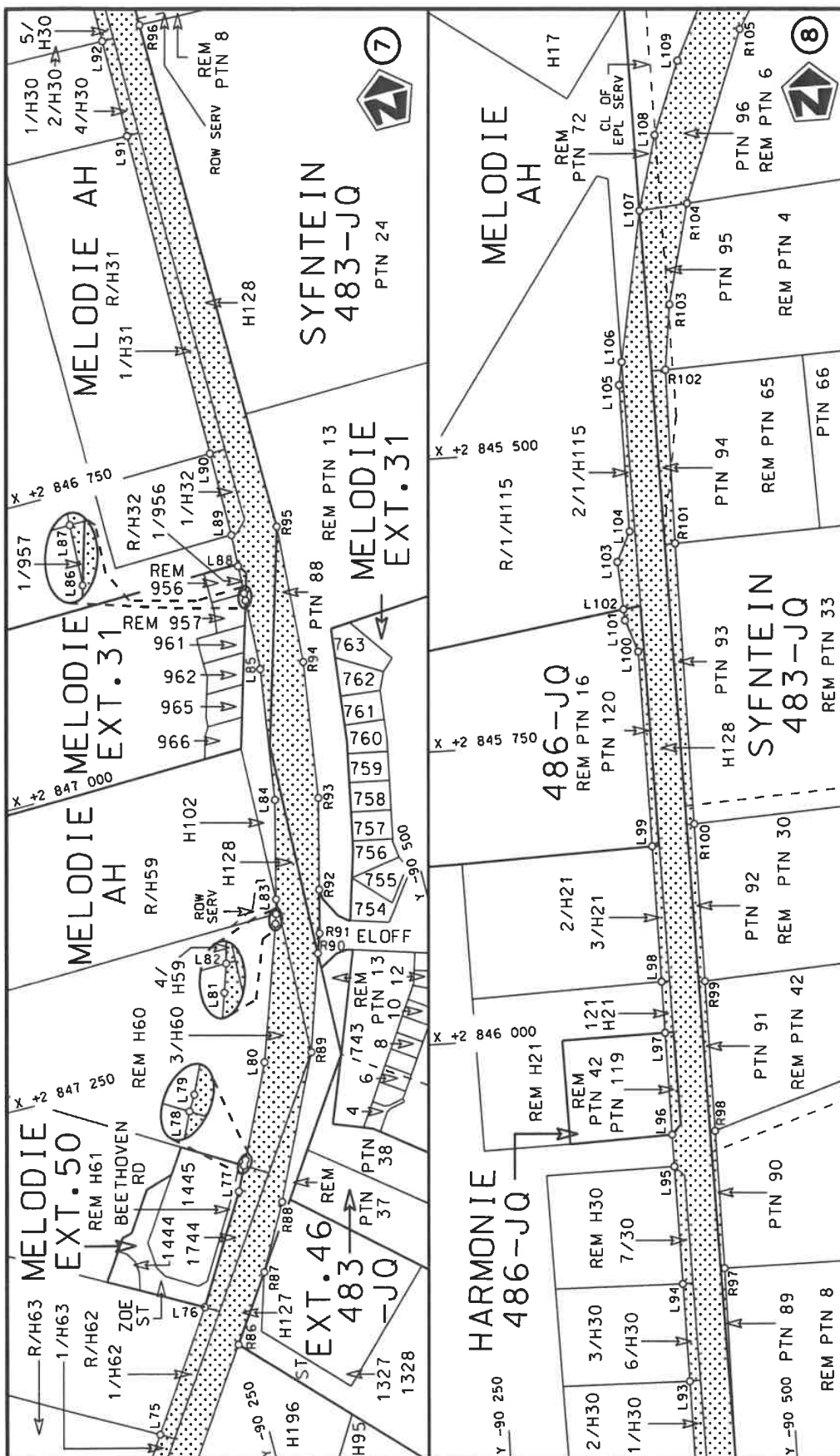


Die Suid Afrikaanse Nasionale Padagentskap MSB Bpk The South African National Roads Agency SOC Ltd	Die figuur getoon The figure shown	<div data-bbox="1278 1077 1358 1223" data-label="Image"> </div>	<div data-bbox="1267 607 1362 999" data-label="Text"> <p>stel die padreserwe voor van 'n gedeelte represents the road reserve of a portion van Nasionale Roete R511 of National Route</p> </div>	<div data-bbox="1326 282 1362 488" data-label="Text"> <p>Vel Sheet 2 of 16</p> </div> <div data-bbox="1326 282 1362 488" data-label="Text"> <p>Plan P1218/20</p> </div>
---	---------------------------------------	---	--	---

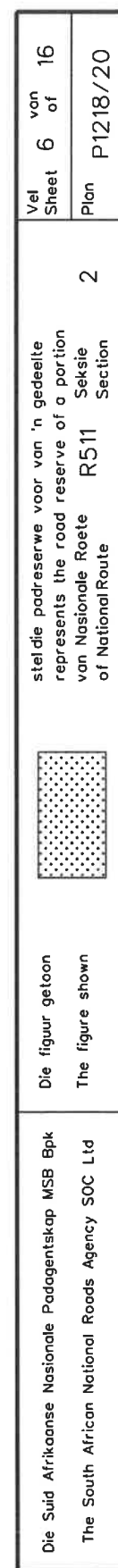


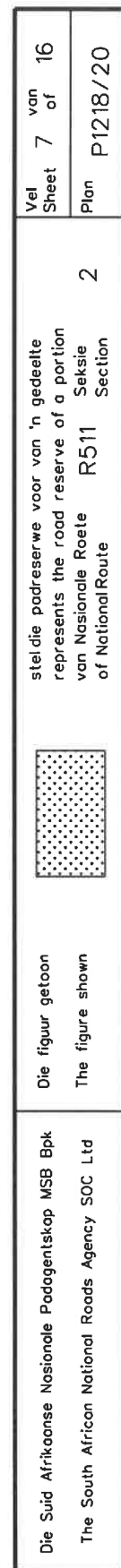
Die Suid Afrikaanse Nasionale Padagentskap MSB Bpk The South African National Roads Agency SOC Ltd	Die figuur getoon The figure shown	steldie podreserwe voor van 'n gedeelte represents the road reserve of a portion van Nasionale Roete R511 Seksie 2 of National Route	Vel Sheet 3 of 16 Plan P1218/20
---	---------------------------------------	---	------------------------------------

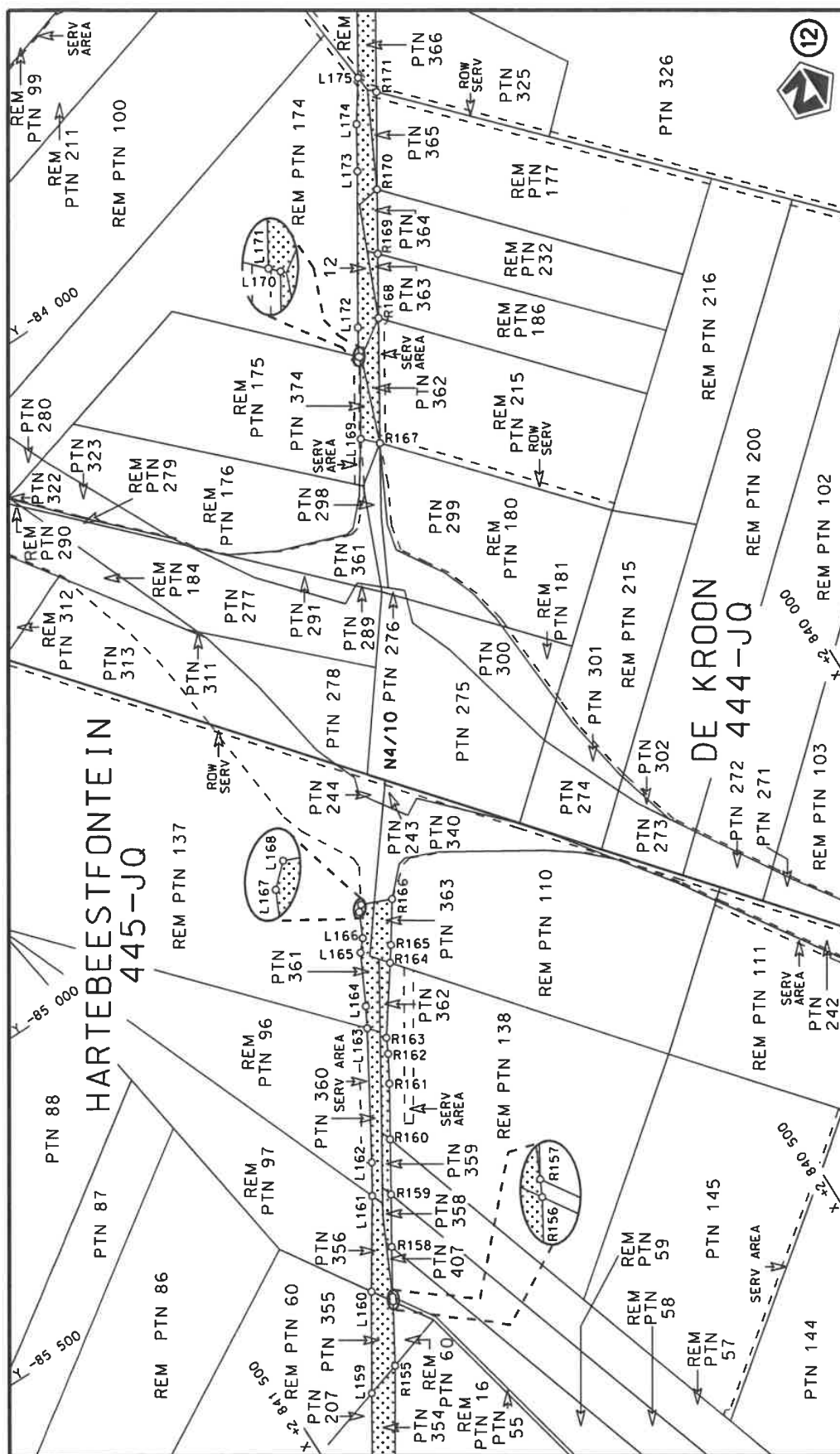


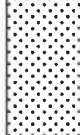


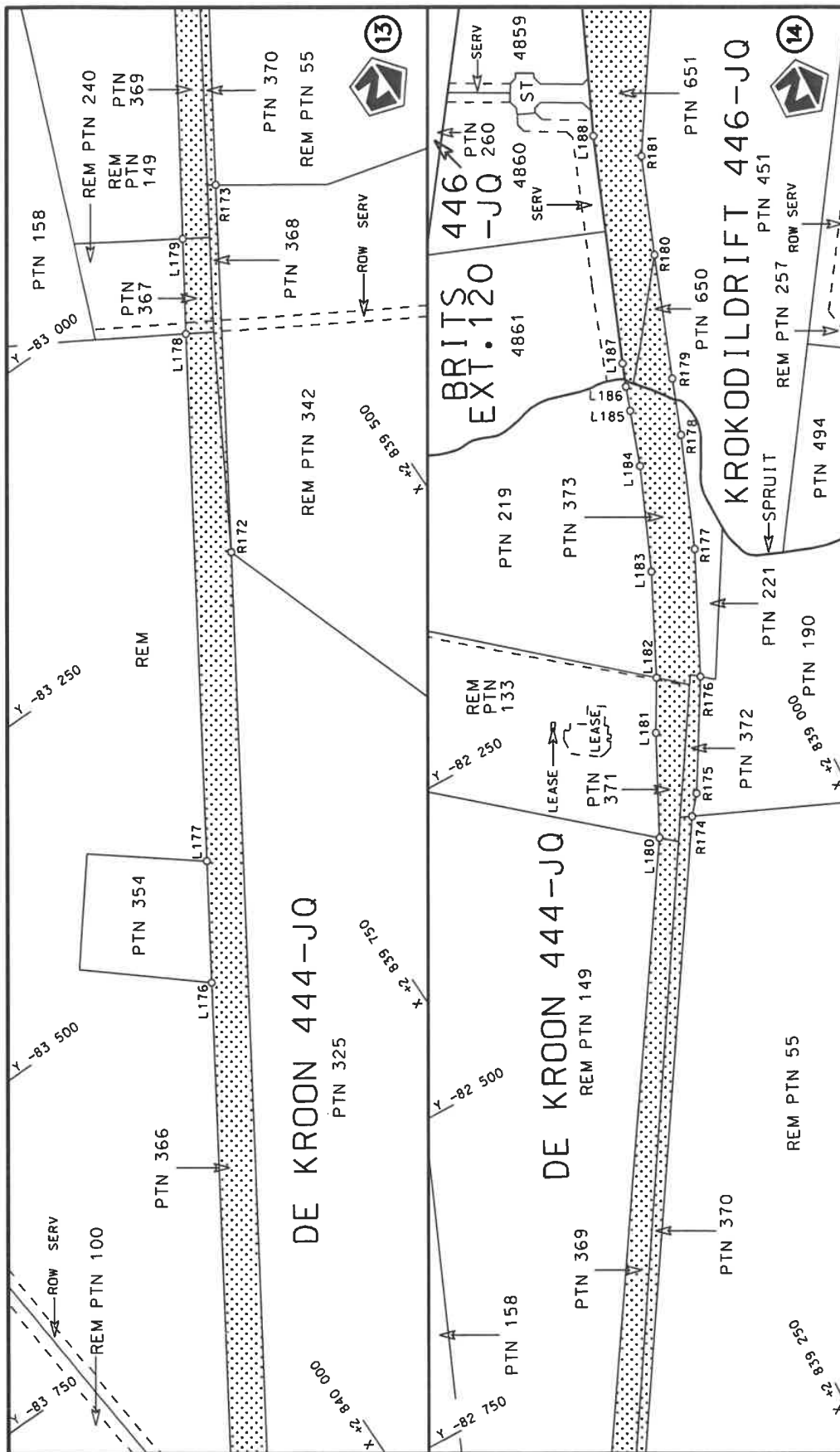
Die Suid Afrikaanse Nasionale Padagentskap MSB Bpk The South African National Roads Agency SOC Ltd	Die figuur getoon The figure shown	steldie padreserwe voor van 'n gedeelte represents the road reserve of a portion van Nasionale Roete R511 of National Route Section	Vel Sheet 5 of 16 Plan P1218/20
---	---------------------------------------	--	------------------------------------



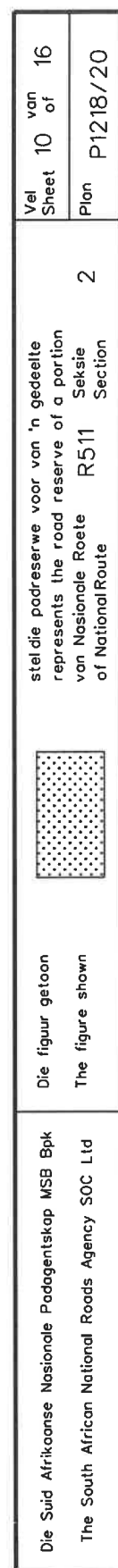


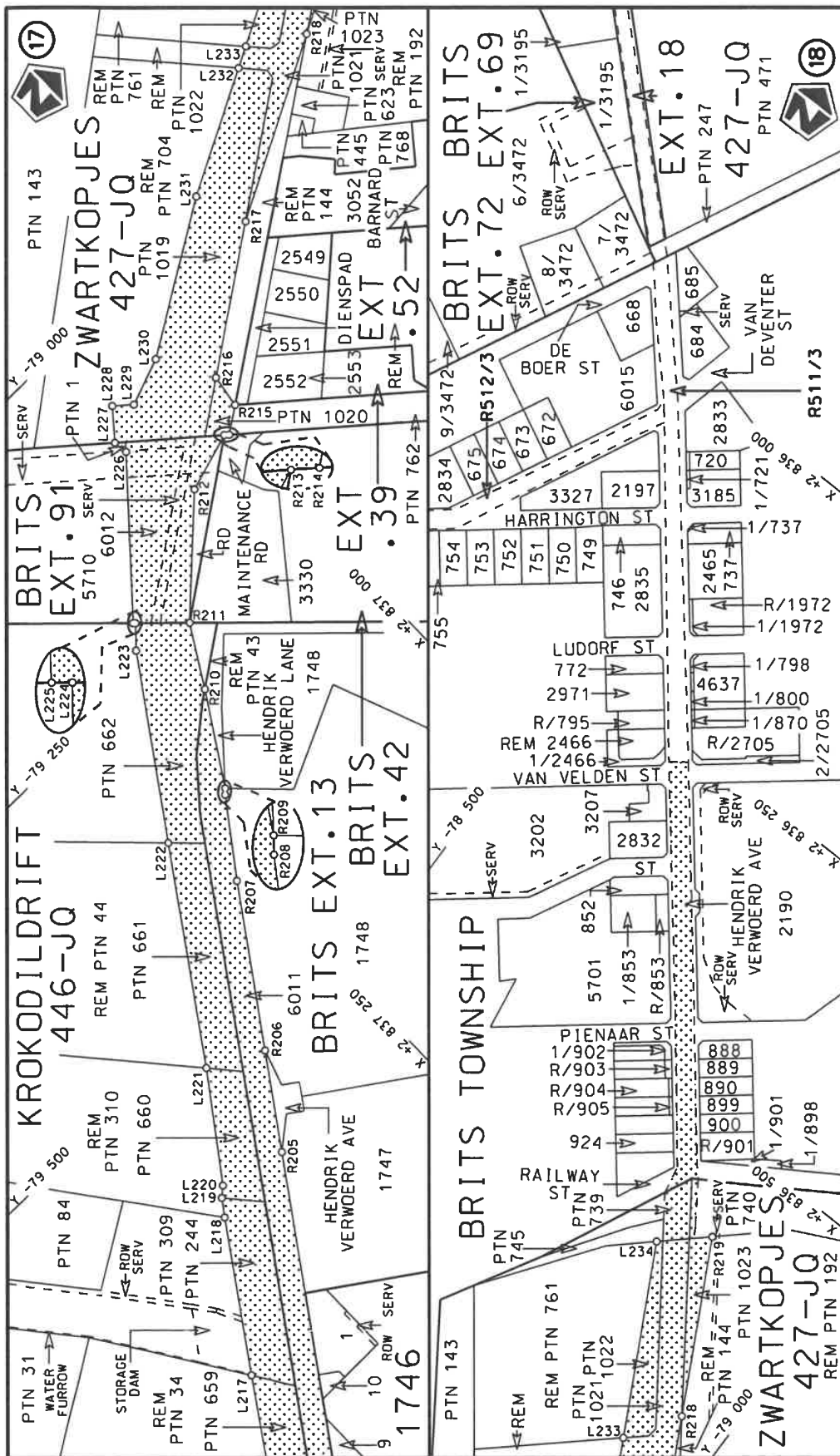


Die Suid Afrikaanse Nasionale Padagentskap MSB Bpk The South African National Roads Agency SOC Ltd	Die figuur getoon The figure shown	 steldie podreserwe voor van 'n gedeelte represents the road reserve of a portion van Nasionale Roete R511 of National Route	Vel Sheet 8 of 16 Plan P1218/20
---	---------------------------------------	---	---------------------------------------



Die Suid Afrikaanse Nasionale Padagentskap MSB Bpk The South African National Roads Agency SOC Ltd	Die figuur getoon The figure shown	stel die padreserwe voor van 'n gedeelte represents the road reserve of a portion van Nasionale Roete R511 of National Route	Vel Sheet	9 of	16
			Plan	P1218/20	





Die Suid Afrikaanse Nasionale Podogentskap MSB Bpk The South African National Roads Agency SOC Ltd	Die figuur getoon The figure shown	steld die podreserwe voor van 'n gedeelte represents the road reserve of a portion van Nasionale Roete of National Route	2	Vel Sheet	11 of 16	Plan P1218/20
---	---------------------------------------	---	---	--------------	----------	------------------

PADRESERVE KOÖRDINATE / ROAD RESERVE CO-ORDINATES						
LINKERKANT/LEFT HAND SIDE				REGTERKANT/RIGHT HAND SIDE		
	Y	X	WG 27°		Y	X
L1	-95 467.77	2 851 908.98		R1	-95 461.92	2 851 874.21
L2	-95 376.25	2 851 878.16		R2	-94 968.06	2 851 719.47
L3	-95 236.32	2 851 835.10		R3	-94 859.27	2 851 675.49
L4	-95 028.91	2 851 775.89		R4	-94 837.31	2 851 663.77
L5	-94 963.18	2 851 764.94		R5	-94 760.73	2 851 614.37
L6	-94 903.21	2 851 738.85		R6	-94 685.05	2 851 556.75
L7	-94 866.11	2 851 717.58		R7	-94 641.72	2 851 518.24
L8	-94 848.34	2 851 707.40		R8	-94 577.85	2 851 454.80
L9	-94 764.21	2 851 665.22		R9	-94 481.22	2 851 392.76
L10	-94 758.05	2 851 658.84		R10	-94 453.41	2 851 363.78
L11	-94 741.27	2 851 641.44		R11	-94 438.77	2 851 341.48
L12	-94 485.15	2 851 438.64		R12	-94 432.38	2 851 336.73
L13	-94 378.94	2 851 360.83		R13	-94 380.33	2 851 310.79
L14	-94 194.17	2 851 263.62		R14	-94 279.31	2 851 223.71
L15	-94 143.58	2 851 250.71		R15	-94 261.27	2 851 212.92
L16	-94 092.66	2 851 239.83		R16	-94 216.78	2 851 209.18
L17	-93 978.87	2 851 222.06		R17	-94 191.29	2 851 205.18
L18	-93 863.92	2 851 213.50		R18	-94 136.97	2 851 186.54
L19	-93 748.64	2 851 213.87		R19	-94 119.26	2 851 188.43
L20	-93 429.42	2 851 131.21		R20	-94 101.87	2 851 188.46
L21	-93 261.20	2 851 087.54		R21	-94 077.02	2 851 185.00
L22	-93 102.96	2 851 046.45		R22	-94 061.53	2 851 187.05
L23	-93 060.75	2 851 032.74		R23	-94 044.11	2 851 185.23
L24	-92 918.20	2 850 988.13		R24	-93 998.91	2 851 177.60
L25	-92 843.23	2 850 979.30		R25	-93 980.53	2 851 175.73
L26	-92 843.60	2 850 972.97		R26	-93 968.51	2 851 168.27
L27	-92 758.89	2 850 919.78		R27	-93 947.75	2 851 151.04
L28	-92 657.57	2 850 860.21		R28	-93 928.89	2 851 143.69
L29	-92 405.60	2 850 653.79		R29	-93 851.84	2 851 120.76
L30	-92 273.04	2 850 532.20		R30	-93 829.10	2 851 115.96
L31	-92 232.85	2 850 495.33		R31	-93 799.72	2 851 113.17
L32	-91 984.02	2 850 266.50		R32	-93 774.69	2 851 113.20
L33	-91 829.36	2 850 143.76		R33	-93 762.67	2 851 116.35
L34	-91 699.54	2 849 999.52		R34	-93 736.78	2 851 113.77
L35	-91 645.07	2 849 935.29		R35	-93 510.01	2 851 073.31
L36	-91 646.80	2 849 906.41		R36	-93 272.31	2 851 014.49
L37	-91 537.25	2 849 733.05		R37	-93 039.97	2 850 953.82
L38	-91 503.01	2 849 704.47		R38	-93 012.69	2 850 954.36
L39	-91 462.10	2 849 734.36		R39	-92 904.16	2 850 921.40
L40	-91 431.07	2 849 699.67		R40	-92 834.71	2 850 891.26
L41	-91 478.76	2 849 656.39		R41	-92 806.31	2 850 875.96
L42	-91 475.34	2 849 605.41		R42	-92 768.06	2 850 855.35
L43	-91 382.98	2 849 348.26		R43	-92 704.70	2 850 813.93
L44	-91 355.82	2 849 349.30		R44	-92 662.53	2 850 781.96
L45	-91 347.37	2 849 242.32		R45	-92 584.92	2 850 720.39
L46	-91 338.99	2 849 136.27		R46	-92 498.66	2 850 643.51
L47	-91 335.73	2 849 095.11		R47	-92 441.71	2 850 584.03
L48	-91 317.77	2 849 058.10		R48	-92 408.17	2 850 554.73
L49	-91 303.25	2 849 057.58		R49	-92 377.52	2 850 532.98
L50	-91 278.70	2 849 053.67		R50	-92 359.59	2 850 520.25
L51	-91 285.59	2 849 024.12		R51	-92 306.21	2 850 473.49
				Vel Sheet	12 Van of 16	P1218/20

PADRESERVE KOÖRDINATE / ROAD RESERVE CO-ORDINATES						
LINKERKANT/LEFT HAND SIDE				REGTERKANT/RIGHT HAND SIDE		
	Y	X	WG 27°		Y	X
L52	-91 300.51	2 849 024.37		R52	-92 142.08	2 850 346.67
L53	-91 314.89	2 849 021.72		R53	-92 030.81	2 850 253.44
L54	-91 327.06	2 848 985.36		R54	-92 002.15	2 850 233.95
L55	-91 305.06	2 848 707.00		R55	-91 908.24	2 850 149.44
L56	-91 296.44	2 848 707.76		R56	-91 727.08	2 849 899.32
L57	-91 295.42	2 848 702.56		R57	-91 710.42	2 849 879.82
L58	-91 271.39	2 848 657.32		R58	-91 595.92	2 849 698.65
L59	-91 232.41	2 848 583.98		R59	-91 584.10	2 849 636.62
L60	-91 230.47	2 848 580.32		R60	-91 560.27	2 849 581.24
L61	-91 147.93	2 848 501.23		R61	-91 524.72	2 849 532.33
L62	-91 122.71	2 848 477.07		R62	-91 457.99	2 849 364.23
L63	-91 095.97	2 848 460.95		R63	-91 408.10	2 849 127.51
L64	-91 017.80	2 848 414.19		R64	-91 405.42	2 849 114.79
L65	-91 016.15	2 848 393.48		R65	-91 409.52	2 849 062.22
L66	-90 935.84	2 848 345.55		R66	-91 417.35	2 849 050.73
L67	-90 804.13	2 848 268.00		R67	-91 416.20	2 849 018.61
L68	-90 784.49	2 848 268.93		R68	-91 407.92	2 849 008.88
L69	-90 125.91	2 847 875.69		R69	-91 399.53	2 848 963.82
L70	-90 091.62	2 847 855.22		R70	-91 391.67	2 848 894.57
L71	-89 953.73	2 847 772.88		R71	-91 370.06	2 848 702.68
L72	-89 981.59	2 847 723.64		R72	-91 367.39	2 848 667.43
L73	-90 022.39	2 847 748.00		R73	-91 349.11	2 848 651.88
L74	-90 090.08	2 847 649.07		R74	-91 330.18	2 848 635.87
L75	-90 157.77	2 847 550.14		R75	-91 301.07	2 848 597.54
L76	-90 223.25	2 847 454.44		R76	-91 294.94	2 848 579.02
L77	-90 277.00	2 847 365.94		R77	-91 292.62	2 848 549.73
L78	-90 286.78	2 847 345.70		R78	-91 287.03	2 848 539.72
L79	-90 289.33	2 847 341.41		R79	-91 227.98	2 848 471.91
L80	-90 326.45	2 847 264.59		R80	-91 223.02	2 848 466.21
L81	-90 365.75	2 847 152.36		R81	-91 090.79	2 848 395.32
L82	-90 368.38	2 847 144.43		R82	-90 957.63	2 848 309.43
L83	-90 371.48	2 847 132.26		R83	-90 877.63	2 848 258.49
L84	-90 392.21	2 847 049.77		R84	-90 059.12	2 847 770.18
L85	-90 408.43	2 846 938.43		R85	-90 057.66	2 847 763.49
L86	-90 410.93	2 846 878.42		R86	-90 243.22	2 847 492.76
L87	-90 411.18	2 846 872.35		R87	-90 280.63	2 847 438.17
L88	-90 412.17	2 846 848.58		R88	-90 310.80	2 847 384.08
L89	-90 413.30	2 846 821.35		R89	-90 368.00	2 847 266.58
L90	-90 412.95	2 846 749.39		R90	-90 394.97	2 847 186.21
L91	-90 411.59	2 846 468.71		R91	-90 400.79	2 847 170.15
L92	-90 410.76	2 846 385.13		R92	-90 409.98	2 847 133.77
L93	-90 409.94	2 846 301.56		R93	-90 429.18	2 847 057.77
L94	-90 409.11	2 846 217.98		R94	-90 446.07	2 846 941.97
L95	-90 408.11	2 846 117.12		R95	-90 453.01	2 846 824.20
L96	-90 407.91	2 846 089.71		R96	-90 445.90	2 846 379.95
L97	-90 407.19	2 846 002.39		R97	-90 446.56	2 846 206.81
L98	-90 406.83	2 845 958.46		R98	-90 445.61	2 846 088.88
L99	-90 405.87	2 845 842.46		R99	-90 444.78	2 845 960.46
L100	-90 404.18	2 845 675.45		R100	-90 443.78	2 845 825.62
L101	-90 394.40	2 845 648.14		R101	-90 442.07	2 845 585.17
L102	-90 393.75	2 845 638.71		R102	-90 442.73	2 845 436.74
				Vel Sheet	13	Van of 16 P1218/20

PADRESERWE KOÖRDINATE / ROAD RESERVE CO-ORDINATES						
LINKERKANT/LEFT HAND SIDE				REGTERKANT/RIGHT HAND SIDE		
	Y	X	WG 27°		Y	X
L103	-90 390.91	2 845 598.03		R103	-90 449.73	2 845 381.20
L104	-90 403.07	2 845 572.60		R104	-90 470.23	2 845 296.08
L105	-90 401.72	2 845 447.35		R105	-90 525.65	2 845 150.69
L106	-90 405.30	2 845 427.65		R106	-90 574.72	2 845 070.96
L107	-90 428.62	2 845 299.76		R107	-90 615.24	2 845 048.18
L108	-90 445.66	2 845 236.11		R108	-90 684.97	2 845 036.56
L109	-90 469.32	2 845 173.99		R109	-90 687.16	2 845 020.49
L110	-90 500.46	2 845 108.98		R110	-90 689.94	2 845 000.30
L111	-90 519.52	2 845 072.97		R111	-90 640.63	2 844 984.35
L112	-90 529.15	2 845 042.46		R112	-90 593.14	2 844 963.58
L113	-90 527.99	2 845 012.82		R113	-90 547.95	2 844 938.18
L114	-90 524.23	2 845 000.91		R114	-90 523.09	2 844 921.18
L115	-90 517.25	2 844 980.32		R115	-90 478.62	2 844 882.80
L116	-90 498.16	2 844 954.65		R116	-90 440.10	2 844 838.44
L117	-90 450.37	2 844 911.12		R117	-90 408.34	2 844 789.02
L118	-90 408.09	2 844 862.43		R118	-90 383.99	2 844 735.57
L119	-90 373.23	2 844 808.18		R119	-90 367.55	2 844 679.17
L120	-90 346.49	2 844 749.49		R120	-90 359.35	2 844 621.00
L121	-90 328.44	2 844 687.58		R121	-90 351.82	2 844 517.08
L122	-90 319.44	2 844 623.72		R122	-90 343.02	2 844 442.76
L123	-90 313.49	2 844 537.58		R123	-90 334.94	2 844 407.91
L124	-90 311.92	2 844 519.81		R124	-90 326.12	2 844 369.89
L125	-90 303.93	2 844 455.36		R125	-90 313.69	2 844 307.97
L126	-90 298.60	2 844 426.14		R126	-90 298.91	2 844 266.64
L127	-90 271.52	2 844 329.85		R127	-90 223.00	2 844 144.26
L128	-90 252.65	2 844 283.13		R128	-90 209.33	2 844 129.27
L129	-90 229.83	2 844 238.11		R129	-90 172.68	2 844 080.64
L130	-90 153.68	2 844 144.72		R130	-90 155.93	2 844 063.93
L131	-90 141.18	2 844 124.71		R131	-90 078.81	2 843 992.83
L132	-90 107.55	2 844 081.35		R132	-90 034.40	2 843 960.13
L133	-90 065.61	2 844 031.69		R133	-90 017.00	2 843 948.64
L134	-90 035.80	2 844 006.29		R134	-89 965.08	2 843 914.05
L135	-89 803.67	2 843 860.00		R135	-89 926.48	2 843 873.38
L136	-89 686.51	2 843 781.14		R136	-89 901.06	2 843 857.23
L137	-89 092.05	2 843 408.69		R137	-89 856.52	2 843 846.91
L138	-89 078.01	2 843 395.30		R138	-89 704.10	2 843 752.53
L139	-88 974.67	2 843 332.31		R139	-88 709.04	2 843 128.29
L140	-88 957.06	2 843 324.08		R140	-88 679.99	2 843 093.15
L141	-87 851.14	2 842 630.48		R141	-88 721.28	2 843 049.03
L142	-87 764.87	2 842 576.37		R142	-88 701.84	2 843 036.95
L143	-87 732.98	2 842 572.89		R143	-88 693.20	2 843 031.61
L144	-87 701.49	2 842 576.23		R144	-88 570.68	2 843 042.02
L145	-87 683.27	2 842 588.09		R145	-88 302.19	2 842 875.51
L146	-87 674.97	2 842 575.33		R146	-87 918.62	2 842 633.81
L147	-87 666.34	2 842 562.09		R147	-87 813.13	2 842 567.60
L148	-87 688.36	2 842 547.77		R148	-87 744.28	2 842 524.22
L149	-87 669.95	2 842 518.49		R149	-87 389.59	2 842 301.80
L150	-87 433.86	2 842 369.93		R150	-87 164.22	2 842 158.40
L151	-87 164.75	2 842 200.60		R151	-86 795.43	2 841 927.16
L152	-86 896.33	2 842 031.70		R152	-86 576.45	2 841 780.63
L153	-86 759.38	2 841 945.52		R153	-86 427.04	2 841 688.98
				Vel Sheet	14 Van of 16	P1218/20

PADRESERWE KOÖRDINATE / ROAD RESERVE CO-ORDINATES						
LINKERKANT/LEFT HAND SIDE				REGTERKANT/RIGHT HAND SIDE		
	Y	X	WG 27°		Y	X
L154	-86 675.75	2 841 892.90		R154	-86 325.62	2 841 626.98
L155	-86 561.58	2 841 821.06		R155	-85 836.55	2 841 308.59
L156	-86 555.15	2 841 821.76		R156	-85 742.13	2 841 251.16
L157	-86 410.23	2 841 727.47		R157	-85 735.21	2 841 247.76
L158	-86 266.21	2 841 632.67		R158	-85 662.16	2 841 202.38
L159	-85 854.17	2 841 368.26		R159	-85 586.03	2 841 154.25
L160	-85 707.52	2 841 273.51		R160	-85 505.75	2 841 103.91
L161	-85 570.55	2 841 182.71		R161	-85 424.83	2 841 052.82
L162	-85 521.76	2 841 152.09		R162	-85 380.83	2 841 026.55
L163	-85 324.38	2 841 033.29		R163	-85 356.03	2 841 014.26
L164	-85 291.34	2 841 014.62		R164	-85 251.54	2 840 938.64
L165	-85 209.09	2 840 972.16		R165	-85 226.89	2 840 920.83
L166	-85 190.46	2 840 955.50		R166	-85 161.82	2 840 876.07
L167	-85 149.55	2 840 935.86		R167	-84 494.59	2 840 467.88
L168	-85 140.86	2 840 926.41		R168	-84 313.56	2 840 353.57
L169	-84 470.50	2 840 491.98		R169	-84 220.41	2 840 294.76
L170	-84 352.12	2 840 416.72		R170	-84 127.21	2 840 235.92
L171	-84 350.10	2 840 418.66		R171	-83 986.84	2 840 146.13
L172	-84 307.76	2 840 392.50		R172	-83 236.40	2 839 673.22
L173	-84 082.87	2 840 247.82		R173	-82 969.52	2 839 506.36
L174	-84 014.29	2 840 205.30		R174	-82 378.71	2 839 133.96
L175	-83 948.92	2 840 159.84		R175	-82 363.02	2 839 121.30
L176	-83 530.85	2 839 896.39		R176	-82 276.15	2 839 071.41
L177	-83 442.51	2 839 840.72		R177	-82 177.27	2 839 024.67
L178	-83 060.07	2 839 599.81		R178	-82 085.21	2 838 989.59
L179	-82 991.44	2 839 556.13		R179	-82 038.96	2 838 973.93
L180	-82 381.52	2 839 167.96		R180	-81 938.10	2 838 938.21
L181	-82 300.54	2 839 128.55		R181	-81 858.09	2 838 908.91
L182	-82 259.10	2 839 106.08		R182	-81 704.27	2 838 814.26
L183	-82 176.58	2 839 067.44		R183	-81 639.84	2 838 766.34
L184	-82 091.99	2 839 033.89		R184	-81 648.08	2 838 734.14
L185	-82 046.22	2 839 019.43		R185	-81 618.93	2 838 712.83
L186	-82 026.19	2 839 013.11		R186	-81 600.40	2 838 737.00
L187	-82 007.13	2 839 006.37		R187	-81 596.70	2 838 741.83
L188	-81 823.19	2 838 937.92		R188	-81 561.46	2 838 744.85
L189	-81 673.19	2 838 874.75		R189	-81 492.88	2 838 697.49
L190	-81 644.88	2 838 864.11		R190	-81 431.61	2 838 654.92
L191	-81 619.53	2 838 846.97		R191	-81 064.95	2 838 399.93
L192	-81 594.80	2 838 843.47		R192	-80 954.07	2 838 322.90
L193	-81 556.50	2 838 874.82		R193	-80 899.51	2 838 284.82
L194	-81 530.79	2 838 856.60		R194	-80 878.07	2 838 269.93
L195	-81 542.98	2 838 810.39		R195	-80 503.20	2 838 009.67
L196	-81 531.41	2 838 787.39		R196	-80 501.90	2 837 999.37
L197	-81 232.87	2 838 575.40		R197	-80 505.92	2 837 993.58
L198	-81 033.93	2 838 437.42		R198	-80 487.87	2 837 981.04
L199	-80 934.63	2 838 368.54		R199	-80 466.60	2 837 984.27
L200	-80 876.10	2 838 327.95		R200	-80 410.98	2 837 938.36
L201	-80 717.86	2 838 218.85		R201	-80 185.32	2 837 782.40
L202	-80 487.48	2 838 057.90		R202	-80 112.79	2 837 732.27
L203	-80 465.32	2 838 061.92		R203	-79 969.05	2 837 632.92
L204	-80 444.02	2 838 047.01		R204	-79 896.56	2 837 582.82
				Vel Sheet	15 Van of 16	P1218/20

This gazette is also available free online at www.gpwonline.co.za