
GOVERNMENT NOTICES • GOEWERMENTSKENNISGEWINGS

DEPARTMENT OF TRANSPORT

NO. 6654

19 September 2025

**THE SOUTH AFRICAN NATIONAL ROADS
AGENCY SOC LIMITED**Registration No: 1998/009584/30

DECLARATION AMENDMENT OF NATIONAL ROAD R390 SECTION 1

AMENDMENT OF DECLARATION No. 733 OF 2016.

By virtue of section 40(1)(b) of the South African National Roads Agency Limited and the National Roads Act 1998 (Act No. 7 of 1998), I hereby amend Declaration No. 733 of 2016 by substituting paragraph A of the Schedule, being the descriptive declaration of the route from Cradock up to Hofmeyer, with the accompanying sheets 1 to 17 of Plan No. P1195/20

In the town of Cradock the R390 Section 1 enters the town from the south and follows the streets known as Stockenström Street, Daery Ave, Ziervogel Road and Hofmeyer Road, at time of declaration.

In the town of Hofmeyer the R390 Section 1 enters the town from the west and follows the street known as Voortrekker Street, at time of declaration.

(National Road R390 Section 1: Cradock – Hofmeyer)
MINISTER VAN VERVOER

DEPARTEMENT VAN VERVOER

NO. 6654

19 September 2025

**DIE SUID-AFRIKAANSE NASIONALE
PADAGENTSKAP MSB BEPERK**

Registrasie No: 1998/009584/30

VERKLARING WYSIGING VAN NASIONALE PAD R390 SEKSIE 1

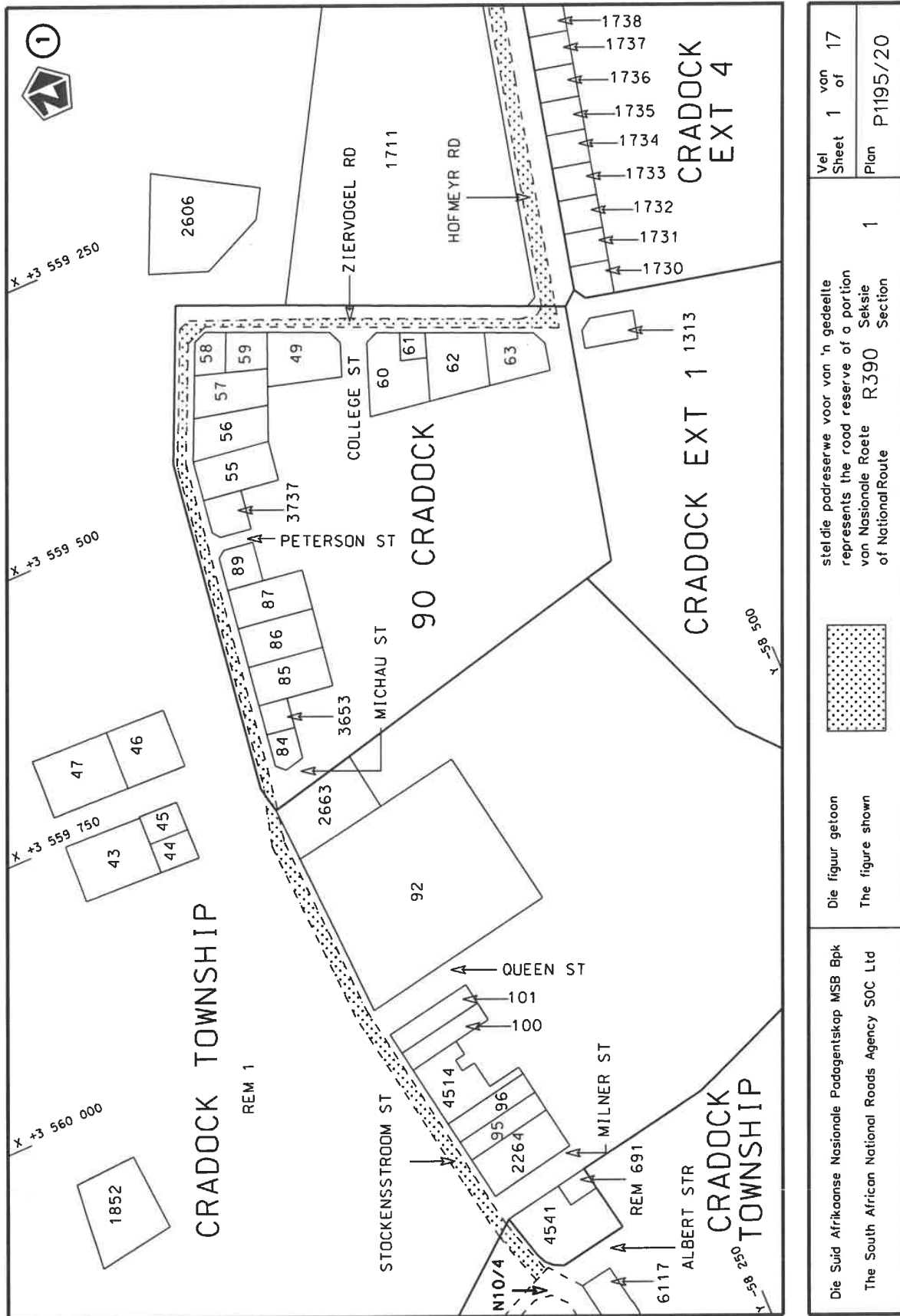
WYSIGING VAN VERKLARING No. 733 VAN 2016.

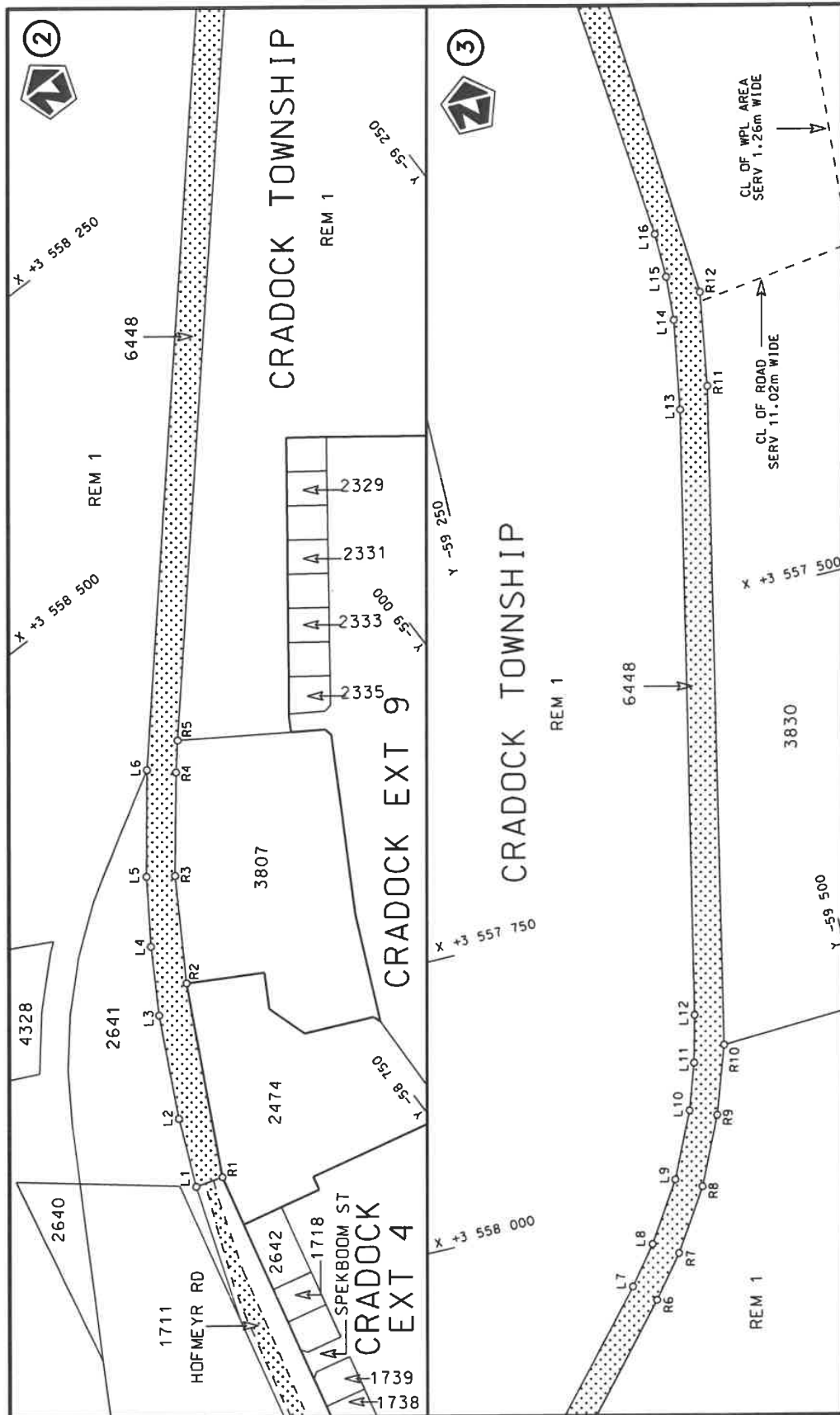
Kragtens Artikel 40(1)(b) van die Wet op die Suid-Afrikaanse Nasionale Padagentskap Beperk en op Nasionale Paaie Wet 1998 (Wet No. 7 van 1998), wysig ek hiermee Verklaring No. 733 van 2016 deur paragraaf A van die Skedule te vervang, synde die gedeelte van die beskrywende verklaring van die pad vanaf Cradock tot by Hofmeyer, met bygaande velle 1 tot 17 van Plan No. P1195/20

In die dorp Cradock kom die R390 Seksie 1 die dorp binne vanuit die suide en volg dan die strate bekend as Stockenstroomstraat, Daery Weg, Ziervogel pad en Hofmeyer pad, tydens datum van verklaring.

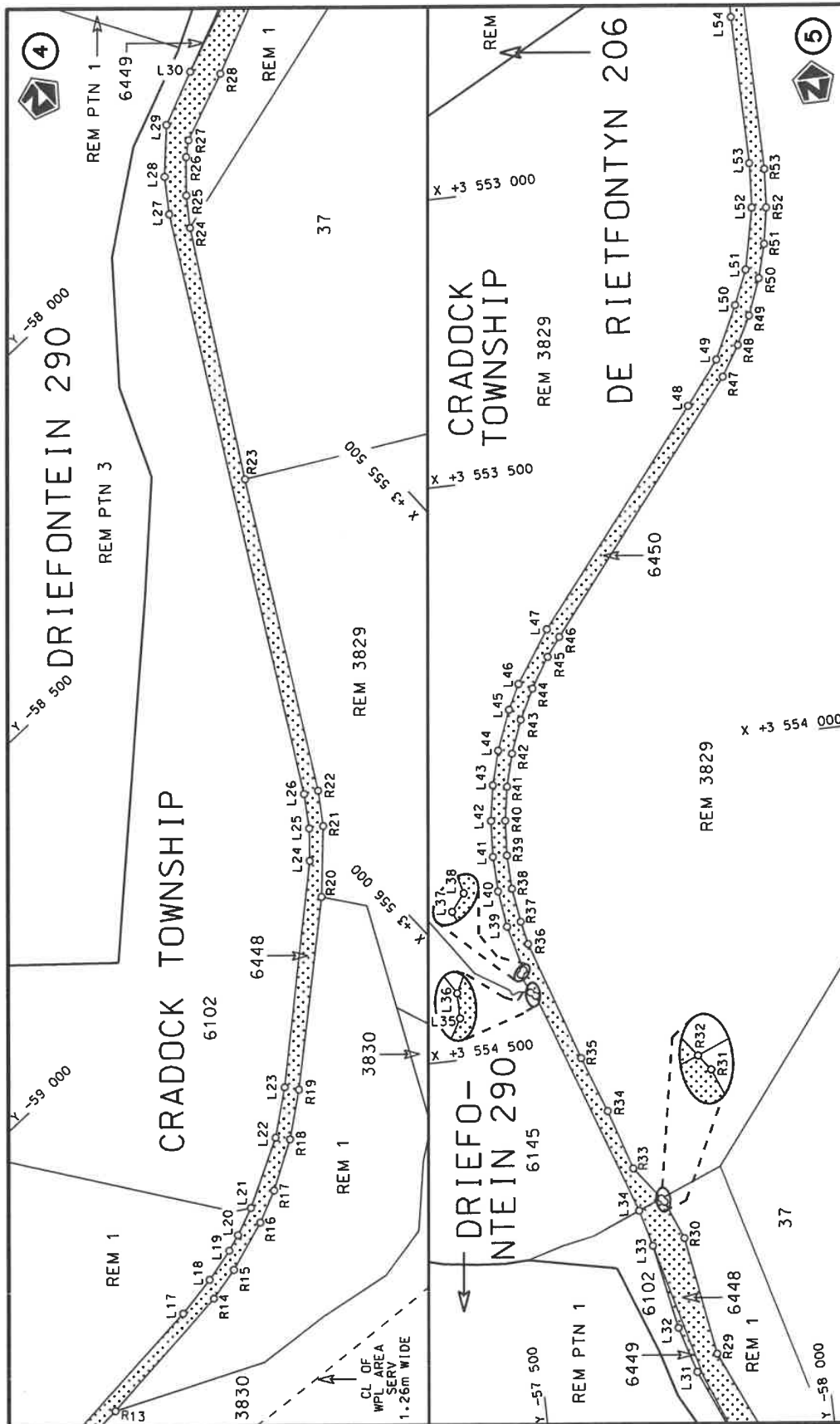
In die dorp Hofmeyer kom die R390 Seksie 1 die dorp binne vanuit die weste en volg dan die straat bekend as Voortrekkerstraat, tydens datum van verklaring.


(Nasionale Pad R390 Seksie 1: Cradock – Hofmeyer)
MINISTER VAN VERVOER

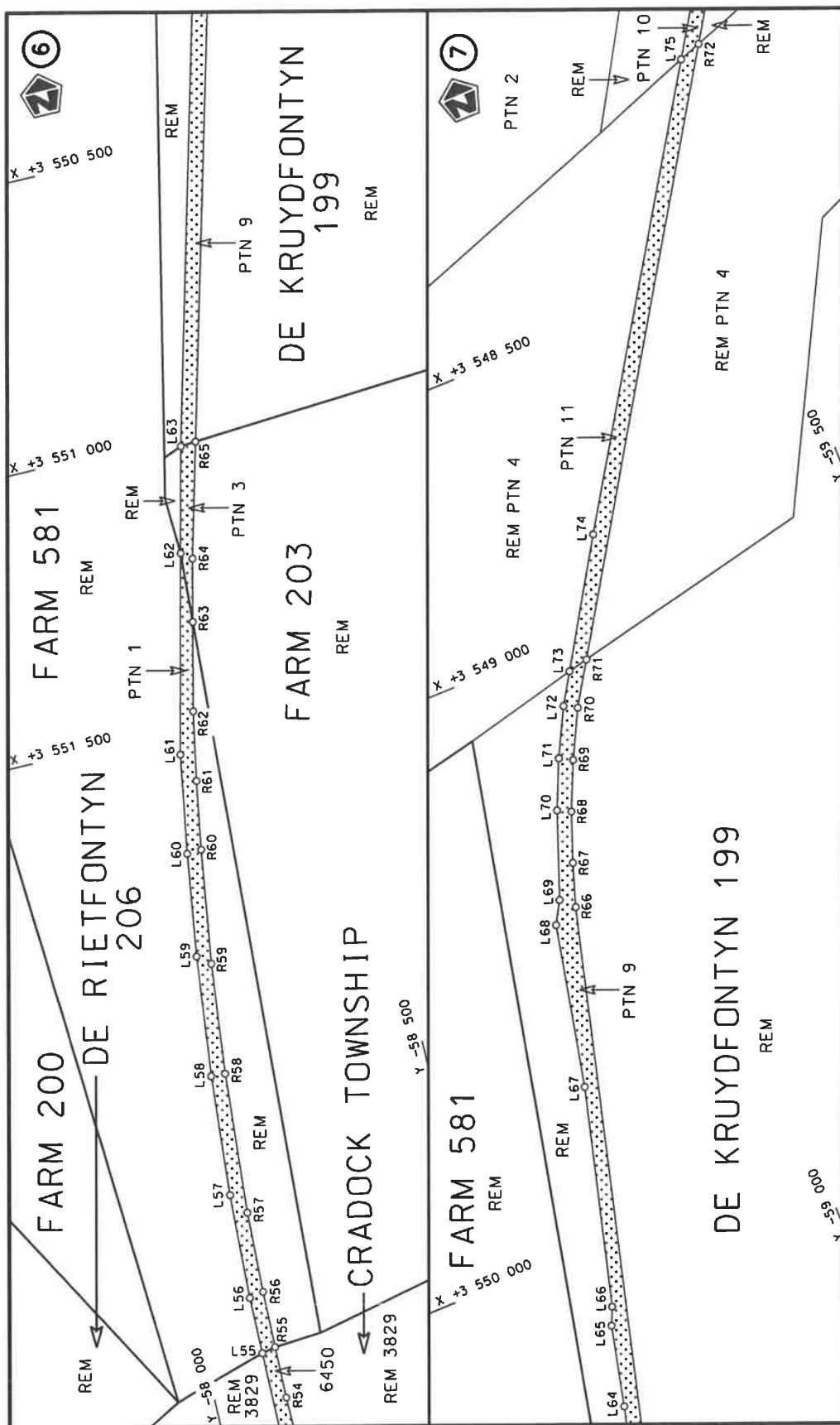




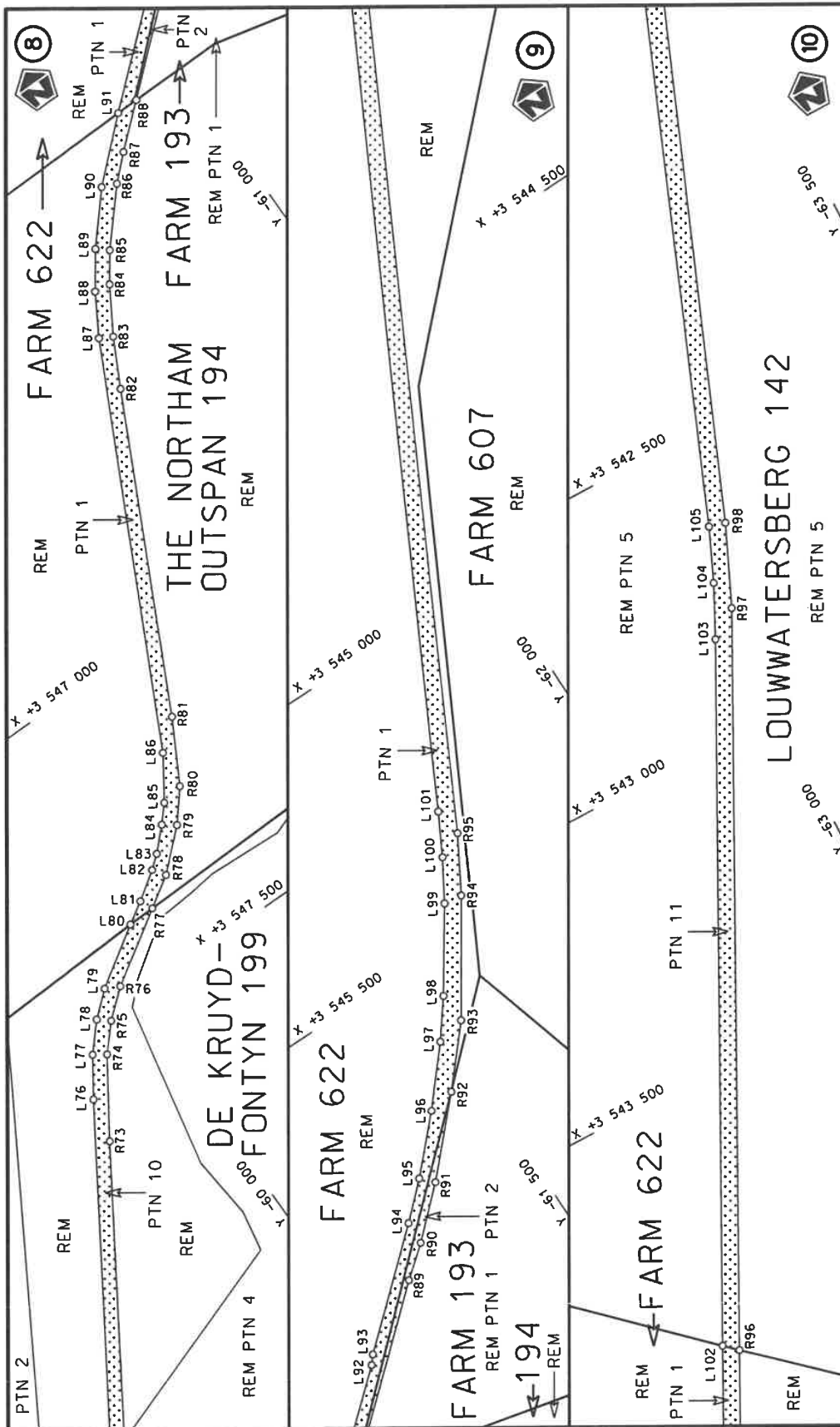
Die Suid Afrikaanse Nasionale Padogentskop MSB Bpk The South African National Roads Agency SOC Ltd	Die figuur getoon The figure shown	steldie padreserwe voor van 'n gedeelte represents the road reserve of a portion van Nasionale Roete R390 of National Route	1	Vel Sheet 2 of 17	Plan P1195/20
---	---------------------------------------	--	---	----------------------	------------------



Die Suid Afrikaanse Nasionale Padagentskap MSB Bpk	Die figuur getoon		stel die padreserwe voor van 'n gedeelte represents the road reserve of a portion van Nasionale Roete R390 of National Route	Vel Sheet 3 of 17
The South African National Roads Agency SOC Ltd	The figure shown			Plan P1195/20



Die Suid Afrikaanse Nasionale Padagentskop MSB Bpk The South African National Roads Agency SOC Ltd	Die figuur getoon The figure shown	steldie padreserwe voor van 'n gedeelte represents the road reserve of a portion van Nasionale Roete R390 of National Route Section	Vel Sheet 4 of 17 Plan P1195/20
---	---------------------------------------	--	--



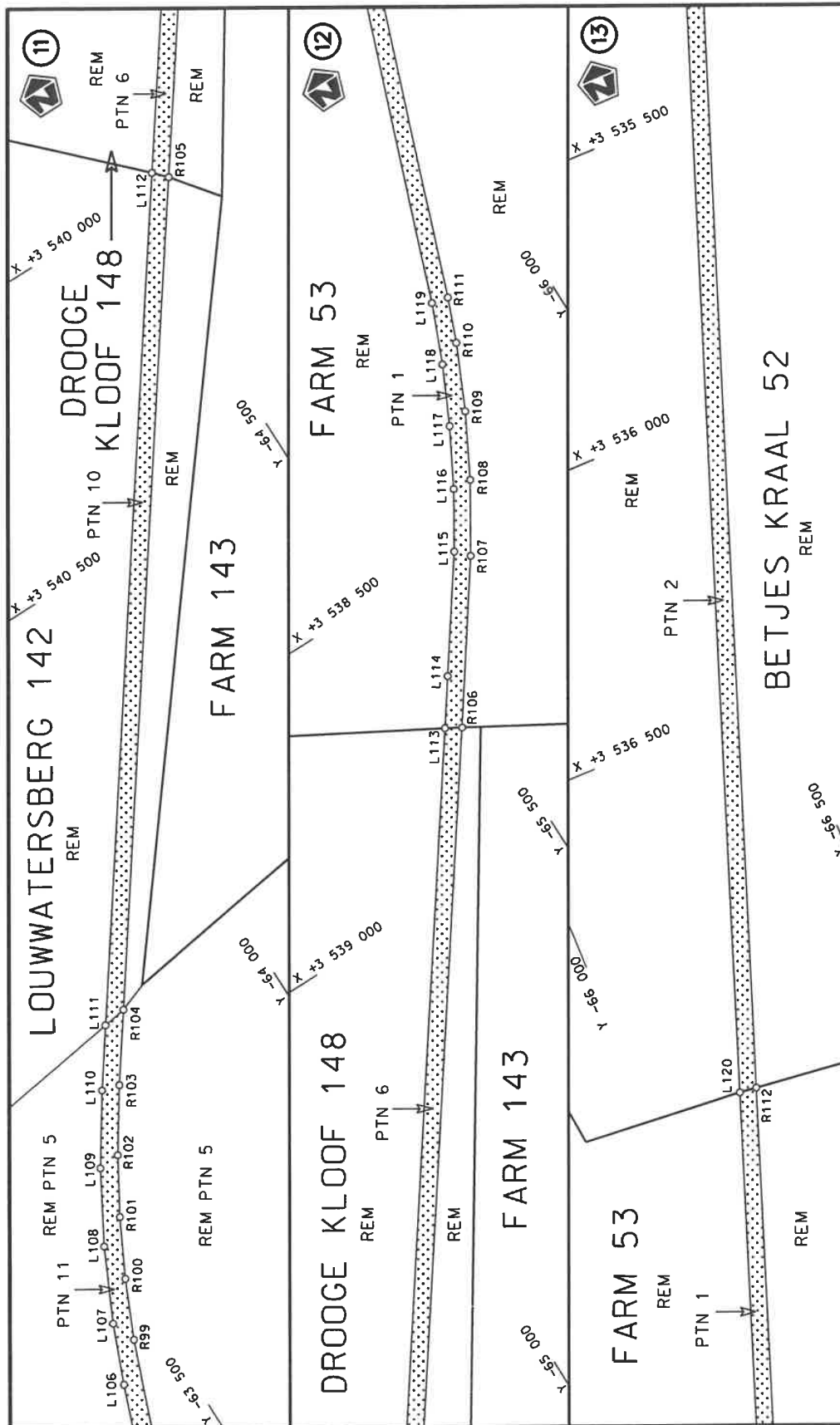
stelt die padreserwe voor van 'n gedeelte
represents the road reserve of a portion
van Nasionale Roete R390 Sêksie
of National Route Section




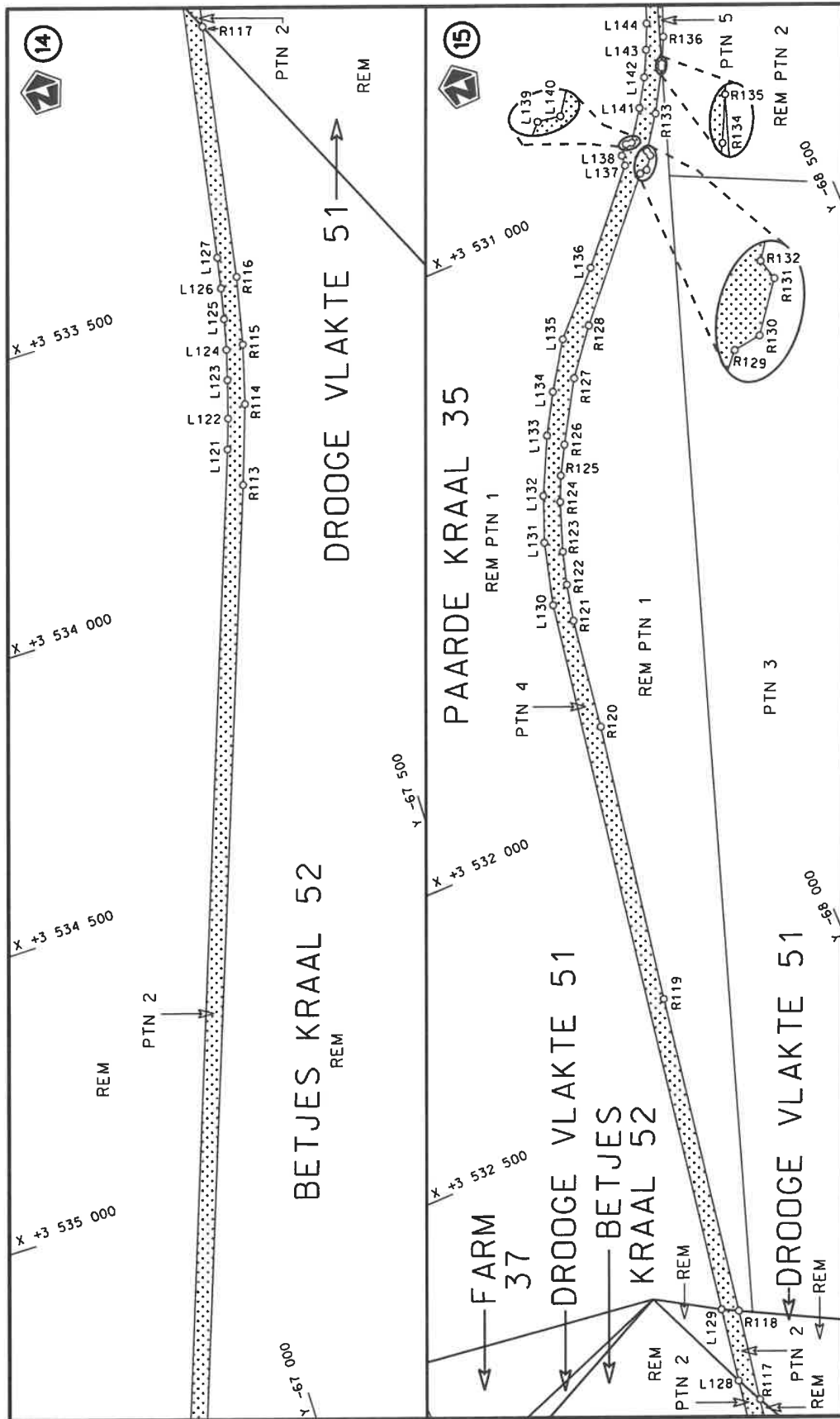
Die figuur getoon
The figure shown

Die Suid-Afrikaanse Nasionale Padagentskap MSB Bpk
The South African National Roads Agency SOC Ltd

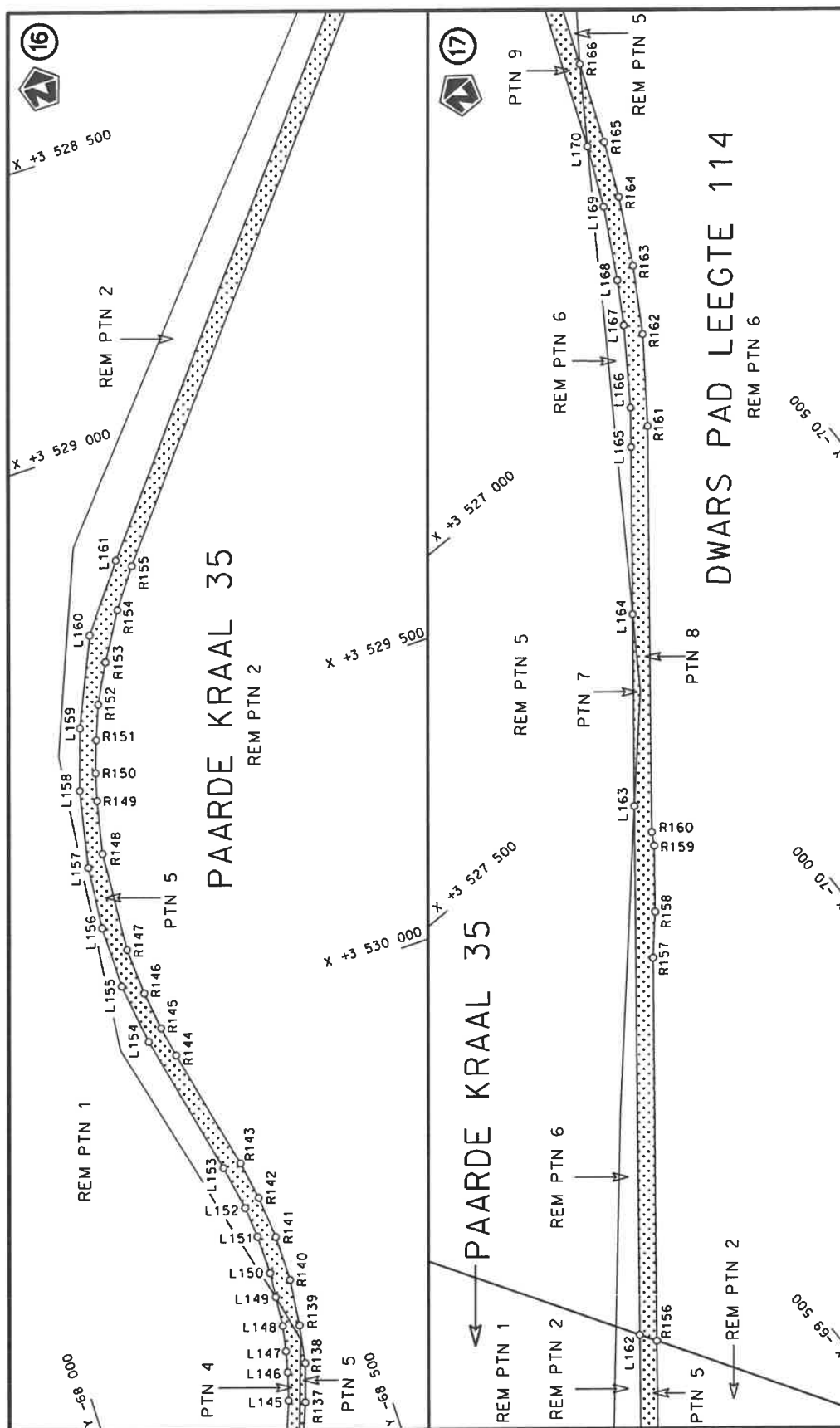
Vel
Sheet 5 of 17
Plan P1195/20



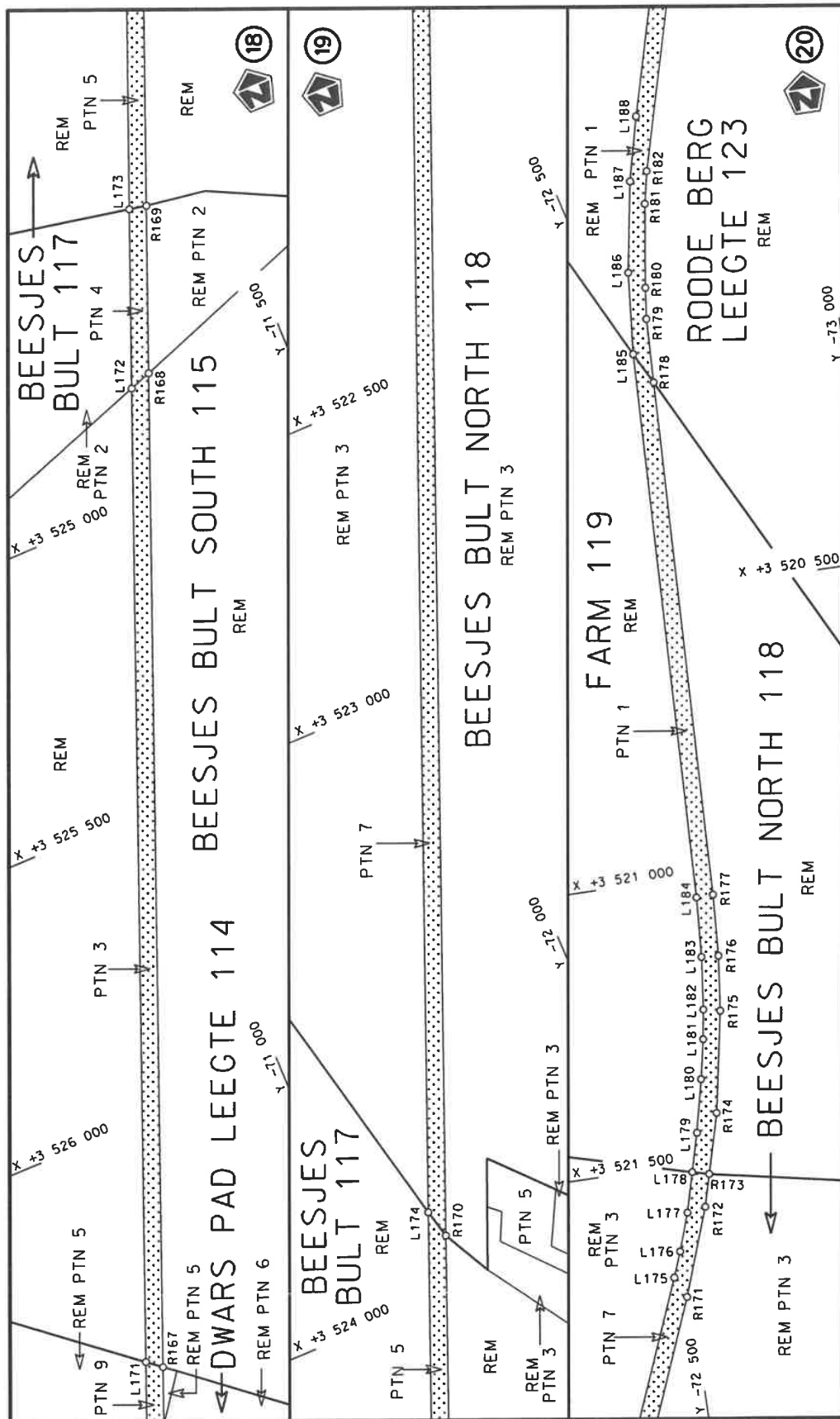
Die Suid Afrikaanse Nasionale Padagentskap MSB Bpk The South African National Roads Agency SOC Ltd	Die figuur getoon The figure shown		stel die padreserwe voor van 'n gedeelte represents the road reserve of a portion van Nasionale Roete R390 of National Route	1	Vel Sheet 6 of 17 Plan P1195/20
---	---------------------------------------	--	---	---	---------------------------------------



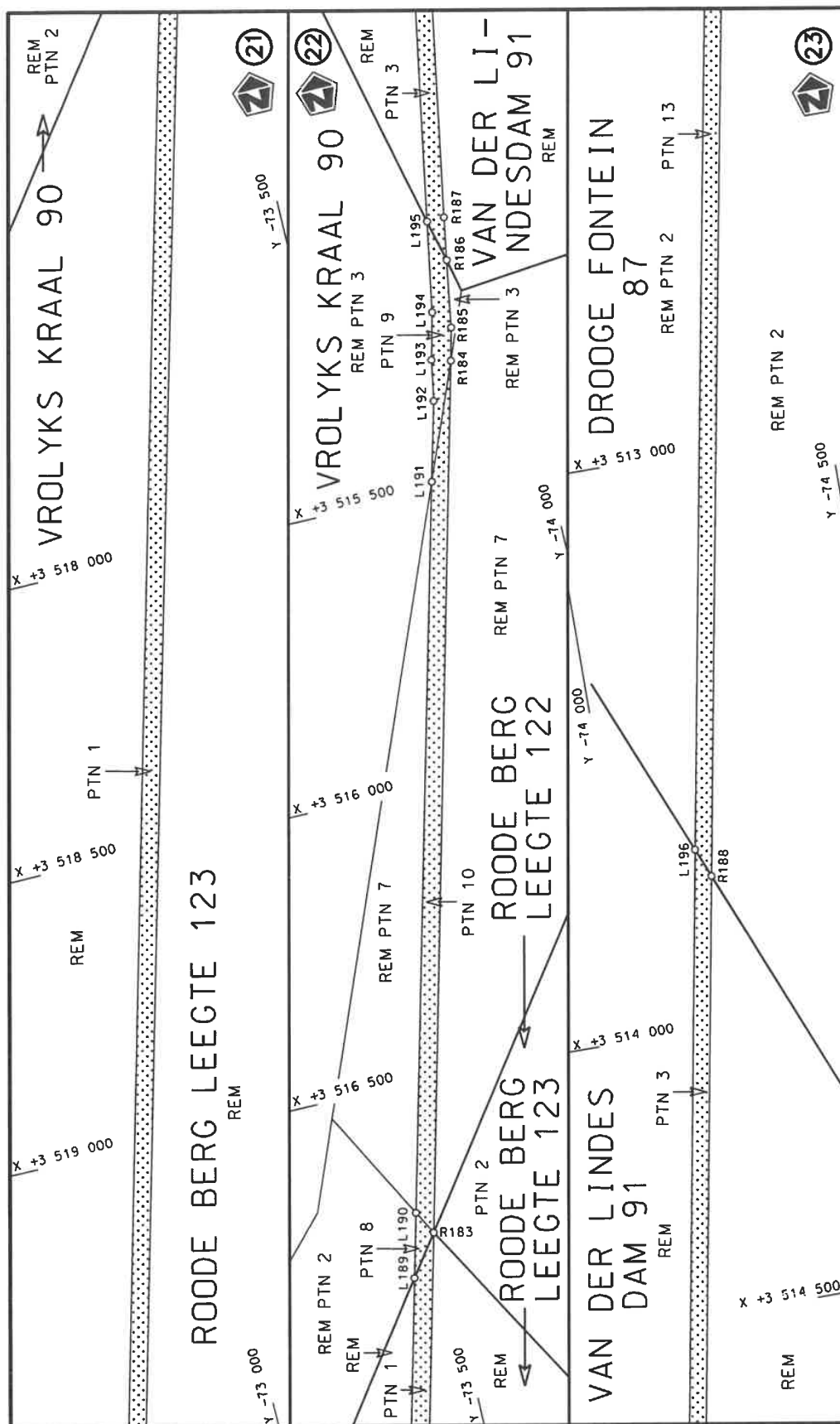
Die Suid Afrikaanse Nasionale Padagentskap MSB Bpk The South African National Roads Agency SOC Ltd	1	Vel Sheet 7 of 17	Plan P1195/20



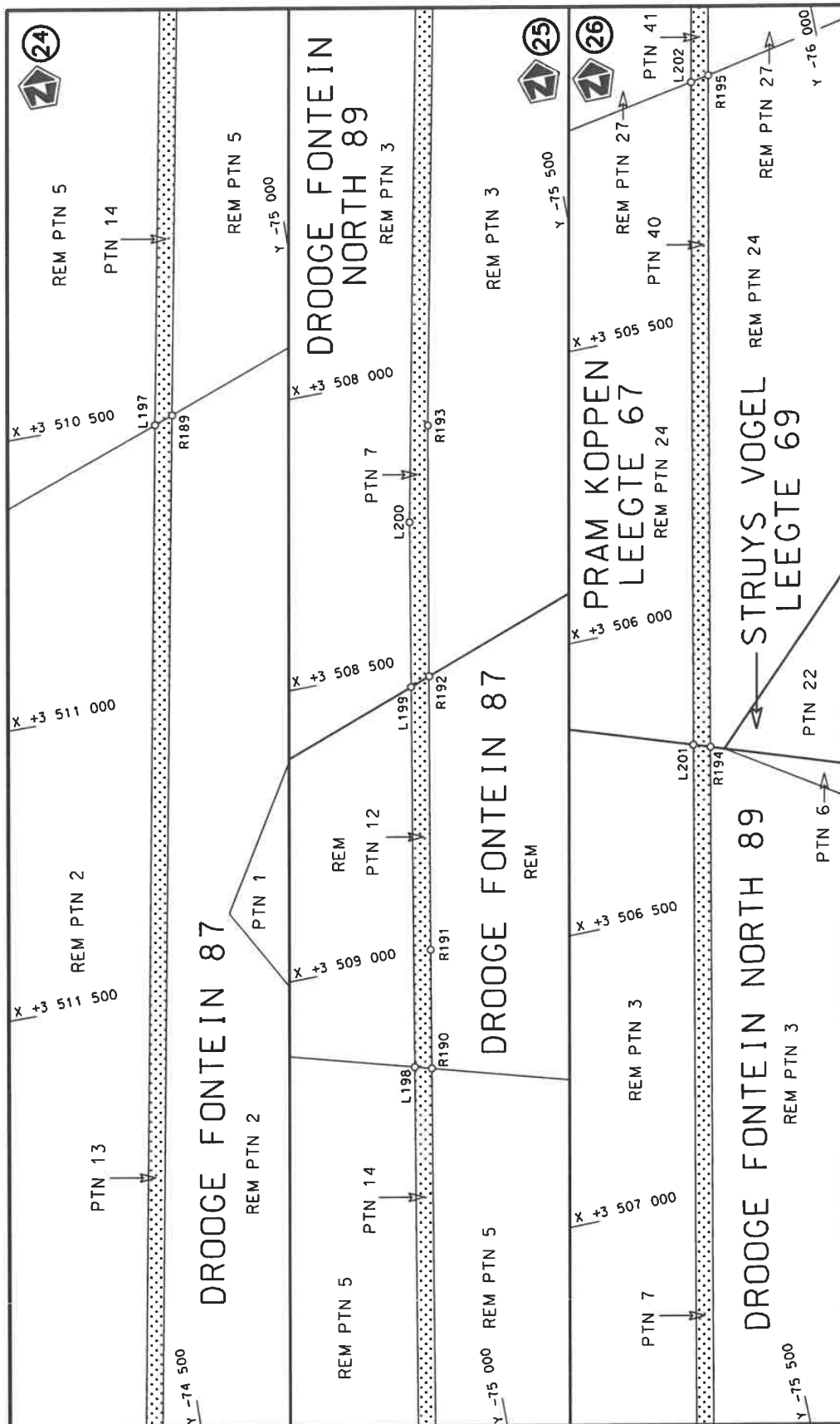
Die Suid Afrikaanse Nasionale Padagentskap MSB Bpk The South African National Roads Agency SOC Ltd	Die figuur getoon The figure shown	stel die padreserwe voor van 'n gedeelte represents the road reserve of a portion van Nasionale Roete R390 of National Route Section	1	Plan P1195/20	Vel Sheet 8 of 17	Plan P1195/20
---	---------------------------------------	---	---	---------------	-------------------	---------------




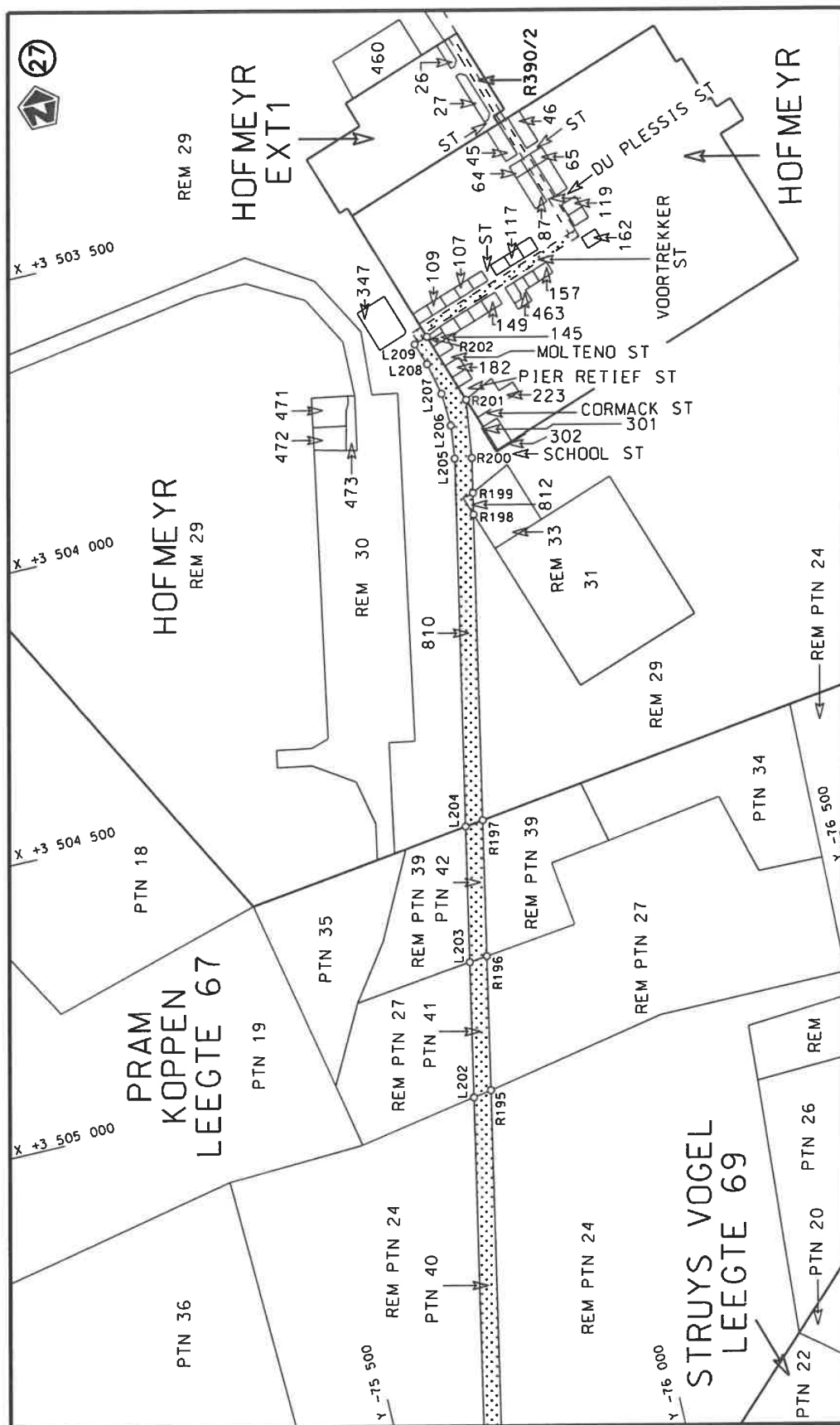
Die Suid Afrikaanse Nasionale Padagentskap MSB Bpk The South African National Roads Agency SOC Ltd	Die figuur getoon The figure shown	<div data-bbox="1276 1097 1356 1232" data-label="Image"> </div>
stel die padreserwe voor van 'n gedeelte represents the road reserve of a portion van Nasionale Roete R390 of National Route	<div data-bbox="1324 560 1356 604" data-label="Text">1</div> <div data-bbox="1324 627 1356 716" data-label="Text">Seksie Section</div>	<div data-bbox="1260 313 1292 515" data-label="Text">Vel Sheet</div> <div data-bbox="1260 313 1292 515" data-label="Text">9 of 17</div> <div data-bbox="1324 313 1356 515" data-label="Text">Plan P1195/20</div>

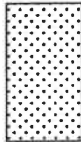


Die Suid Afrikaanse Nasionale Padagentskap MSB Bpk The South African National Roads Agency SOC Ltd	Die figuur getoon The figure shown	stel die padreserwe voor van 'n gedeelte represents the road reserve of a portion van Nasionale Roete R390 Sektie 1 of National Route	Vel Sheet 10 of 17 Plan P1195/20
---	---------------------------------------	--	--



Die Suid Afrikaanse Nasionale Podagentskap MSB Bpk	Die figuur getoon		stel die padreserwe voor van 'n gedeelte represents the road reserve of a portion van Nasionale Roete R390 Sektie of National Route of Section	Vel Sheet 11 of 17
The South African National Roads Agency SOC Ltd	The figure shown			1



Die Suid Afrikaanse Nasionale Podogentskop MSB Bpk The South African National Roads Agency SOC Ltd	Die figuur getoon The figure shown		steldie padreserwe voor van 'n gedeelte represents the road reserve of a portion van Nasionale Roete R390 of National Route	Vel Sheet	van 12 of	17
				Plan	P1195/20	

PADRESERVE KOÖRDINATE / ROAD RESERVE CO-ORDINATES									
LINKERKANT/LEFT HAND SIDE					REGTERKANT/RIGHT HAND SIDE				
	Y	X	WG 25°			Y	X		
L1	-58 548.92	3 558 970.99		R1	-58 572.58	3 558 978.50			
L2	-58 573.24	3 558 914.16		R2	-58 651.24	3 558 823.75			
L3	-58 614.97	3 558 831.57		R3	-58 700.98	3 558 742.68			
L4	-58 646.24	3 558 779.09		R4	-58 757.07	3 558 671.00			
L5	-58 680.72	3 558 728.01		R5	-58 775.23	3 558 649.62			
L6	-58 738.19	3 558 653.88		R6	-59 267.28	3 558 086.84			
L7	-59 249.13	3 558 070.19		R7	-59 295.59	3 558 051.32			
L8	-59 274.83	3 558 037.99		R8	-59 329.43	3 557 998.91			
L9	-59 307.31	3 557 987.46		R9	-59 356.52	3 557 940.83			
L10	-59 333.61	3 557 931.30		R10	-59 376.77	3 557 882.19			
L11	-59 347.22	3 557 891.42		R11	-59 495.98	3 557 315.18			
L12	-59 357.36	3 557 850.61		R12	-59 508.58	3 557 233.28			
L13	-59 467.81	3 557 329.71		R13	-59 486.78	3 556 964.68			
L14	-59 480.44	3 557 251.77		R14	-59 459.17	3 556 704.32			
L15	-59 482.57	3 557 213.22		R15	-59 446.10	3 556 644.75			
L16	-59 481.52	3 557 174.44		R16	-59 416.29	3 556 555.11			
L17	-59 441.83	3 556 761.96		R17	-59 391.22	3 556 499.78			
L18	-59 429.95	3 556 687.60		R18	-59 344.15	3 556 418.92			
L19	-59 415.96	3 556 627.98		R19	-59 290.75	3 556 348.73			
L20	-59 406.25	3 556 598.48		R20	-59 069.38	3 556 091.26			
L21	-59 386.59	3 556 549.69		R21	-58 980.28	3 556 005.26			
L22	-59 325.01	3 556 435.15		R22	-58 928.78	3 555 970.05			
L23	-59 270.69	3 556 363.86		R23	-58 441.79	3 555 694.65			
L24	-59 008.88	3 556 063.82		R24	-58 053.02	3 555 467.91			
L25	-58 966.57	3 556 026.11		R25	-58 006.82	3 555 434.39			
L26	-58 916.34	3 555 991.93		R26	-57 957.20	3 555 389.28			
L27	-58 010.89	3 555 478.50		R27	-57 938.38	3 555 366.34			
L28	-57 957.11	3 555 439.94		R28	-57 890.71	3 555 247.27			
L29	-57 892.60	3 555 376.21		R29	-57 809.21	3 555 063.95			
L30	-57 852.23	3 555 283.54		R30	-57 775.33	3 554 856.15			
L31	-57 770.90	3 555 091.46		R31	-57 748.23	3 554 789.24			
L32	-57 747.12	3 555 011.02		R32	-57 743.20	3 554 782.47			
L33	-57 718.68	3 554 862.99		R33	-57 700.05	3 554 724.38			
L34	-57 702.01	3 554 799.16		R34	-57 667.20	3 554 619.35			
L35	-57 565.34	3 554 404.08		R35	-57 631.74	3 554 521.68			
L36	-57 556.90	3 554 396.96		R36	-57 562.65	3 554 312.15			
L37	-57 543.47	3 554 364.14		R37	-57 554.18	3 554 272.21			
L38	-57 549.43	3 554 356.71		R38	-57 545.65	3 554 212.97			
L39	-57 529.54	3 554 277.79		R39	-57 543.81	3 554 153.98			
L40	-57 520.95	3 554 214.73		R40	-57 547.74	3 554 093.40			
L41	-57 518.86	3 554 153.81		R41	-57 557.61	3 554 034.72			
L42	-57 522.83	3 554 090.87		R42	-57 573.08	3 553 978.24			
L43	-57 532.97	3 554 029.23		R43	-57 594.77	3 553 921.43			
L44	-57 549.39	3 553 970.24		R44	-57 621.26	3 553 869.48			
L45	-57 576.44	3 553 901.49		R45	-57 653.80	3 553 817.54			
L46	-57 597.97	3 553 858.81		R46	-57 678.01	3 553 785.32			
L47	-57 658.08	3 553 769.65		R47	-58 014.41	3 553 367.64			
L48	-57 948.35	3 553 411.26		R48	-58 046.93	3 553 315.88			
L49	-58 006.55	3 553 336.73		R49	-58 072.22	3 553 267.20			
L50	-58 049.83	3 553 246.12		R50	-58 096.64	3 553 204.29			
L51	-58 075.43	3 553 186.63		R51	-58 112.76	3 553 145.96			
					Vel Sheet	13	Van of	17	P1195/20

PADRESERWE KOÖRDINATE / ROAD RESERVE CO-ORDINATES									
LINKERKANT/LEFT HAND SIDE					REGTERKANT/RIGHT HAND SIDE				
	Y	X	WG	25°		Y	X		
L52	-58 098.36	3 553 080.50			R52	-58 123.46	3 553 083.16		
L53	-58 102.72	3 553 002.82			R53	-58 127.95	3 553 015.87		
L54	-58 099.19	3 552 745.24			R54	-58 123.58	3 552 685.54		
L55	-58 100.60	3 552 599.82			R55	-58 125.01	3 552 594.60		
L56	-58 101.57	3 552 500.42			R56	-58 126.57	3 552 495.44		
L57	-58 109.73	3 552 316.83			R57	-58 132.02	3 552 353.95		
L58	-58 125.92	3 552 106.11			R58	-58 150.82	3 552 107.70		
L59	-58 149.61	3 551 895.90			R59	-58 171.78	3 551 914.28		
L60	-58 175.23	3 551 716.63			R60	-58 200.80	3 551 715.56		
L61	-58 203.57	3 551 545.00			R61	-58 220.72	3 551 596.46		
L62	-58 285.61	3 551 201.85			R62	-58 243.27	3 551 476.54		
L63	-58 329.20	3 551 019.56			R63	-58 278.76	3 551 323.88		
L64	-58 524.23	3 550 281.82			R64	-58 303.86	3 551 215.88		
L65	-58 556.74	3 550 141.88			R65	-58 356.34	3 551 017.70		
L66	-58 570.35	3 550 111.52			R66	-58 774.72	3 549 437.74		
L67	-58 670.73	3 549 736.03			R67	-58 799.14	3 549 364.09		
L68	-58 730.82	3 549 453.84			R68	-58 830.55	3 549 279.71		
L69	-58 753.15	3 549 415.41			R69	-58 867.59	3 549 197.07		
L70	-58 808.29	3 549 268.34			R70	-58 909.58	3 549 115.46		
L71	-58 845.38	3 549 184.91			R71	-58 955.54	3 549 043.00		
L72	-58 887.36	3 549 103.19			R72	-59 541.78	3 548 118.87		
L73	-58 920.05	3 549 050.81			R73	-59 821.90	3 547 677.30		
L74	-59 048.79	3 548 844.54			R74	-59 905.65	3 547 550.49		
L75	-59 503.47	3 548 132.34			R75	-59 945.29	3 547 506.87		
L76	-59 841.20	3 547 601.36			R76	-59 993.13	3 547 466.87		
L77	-59 884.92	3 547 536.79			R77	-60 117.14	3 547 387.90		
L78	-59 926.09	3 547 490.57			R78	-60 170.14	3 547 354.15		
L79	-59 968.26	3 547 454.14			R79	-60 235.74	3 547 294.34		
L80	-60 069.77	3 547 389.07			R80	-60 278.90	3 547 241.64		
L81	-60 107.23	3 547 365.75			R81	-60 337.69	3 547 134.76		
L82	-60 155.34	3 547 333.22			R82	-60 593.78	3 546 615.36		
L83	-60 178.22	3 547 314.84			R83	-60 635.58	3 546 533.43		
L84	-60 214.57	3 547 278.31			R84	-60 682.77	3 546 455.38		
L85	-60 240.12	3 547 249.53			R85	-60 717.24	3 546 406.71		
L86	-60 288.33	3 547 177.02			R86	-60 794.30	3 546 319.18		
L87	-60 613.50	3 546 521.22			R87	-60 835.37	3 546 280.59		
L88	-60 655.04	3 546 451.09			R88	-60 905.51	3 546 219.23		
L89	-60 698.22	3 546 390.48			R89	-61 206.20	3 545 956.21		
L90	-60 768.72	3 546 308.49			R90	-61 259.37	3 545 913.14		
L91	-60 866.79	3 546 219.87			R91	-61 339.46	3 545 839.17		
L92	-61 069.77	3 546 043.07			R92	-61 449.36	3 545 722.71		
L93	-61 081.82	3 546 028.92			R93	-61 532.05	3 545 627.97		
L94	-61 260.47	3 545 872.62			R94	-61 652.37	3 545 446.39		
L95	-61 319.03	3 545 817.77			R95	-61 706.82	3 545 351.94		
L96	-61 402.37	3 545 731.22			R96	-62 423.49	3 543 955.69		
L97	-61 481.39	3 545 639.17			R97	-63 014.46	3 542 802.98		
L98	-61 530.17	3 545 575.50			R98	-63 073.82	3 542 666.13		
L99	-61 620.63	3 545 441.70			R99	-63 450.12	3 541 679.20		
L100	-61 661.91	3 545 372.43			R100	-63 494.46	3 541 580.86		
L101	-61 699.74	3 545 301.96			R101	-63 544.09	3 541 484.42		
L102	-62 401.09	3 543 935.06			R102	-63 598.72	3 541 390.99		
					<div> <div>Vel</div> <div>14</div> <div>Van</div> <div>17</div> <div>Sheet</div> <div>of</div> <div>P1195/20</div> </div>				

PADRESERWE KOÖRDINATE / ROAD RESERVE CO-ORDINATES									
LINKERKANT/LEFT HAND SIDE					REGTERKANT/RIGHT HAND SIDE				
	Y	X	WG	25°		Y	X		
L103	-62 964.06	3 542 837.85			R103	-63 666.58	3 541 289.11		
L104	-63 006.92	3 542 749.26			R104	-63 742.92	3 541 181.70		
L105	-63 045.28	3 542 658.48			R105	-64 585.57	3 539 995.63		
L106	-63 393.48	3 541 736.17			R106	-65 455.25	3 538 771.57		
L107	-63 434.47	3 541 635.61			R107	-65 627.87	3 538 526.49		
L108	-63 493.46	3 541 513.23			R108	-65 697.94	3 538 413.55		
L109	-63 560.86	3 541 394.18			R109	-65 754.06	3 538 307.75		
L110	-63 635.83	3 541 280.93			R110	-65 804.54	3 538 198.04		
L111	-63 702.03	3 541 187.78			R111	-65 834.19	3 538 123.24		
L112	-64 564.73	3 539 973.36			R112	-66 192.44	3 537 123.14		
L113	-65 429.31	3 538 756.32			R113	-67 370.26	3 533 835.06		
L114	-65 481.89	3 538 682.31			R114	-67 416.15	3 533 700.68		
L115	-65 607.55	3 538 504.27			R115	-67 443.67	3 533 600.07		
L116	-65 664.93	3 538 411.50			R116	-67 468.65	3 533 483.24		
L117	-65 717.16	3 538 314.84			R117	-67 542.77	3 533 046.39		
L118	-65 764.00	3 538 216.91			R118	-67 569.60	3 532 888.29		
L119	-65 805.52	3 538 116.46			R119	-67 664.00	3 532 331.90		
L120	-66 162.51	3 537 119.49			R120	-67 749.80	3 531 848.01		
L121	-67 362.78	3 533 767.44			R121	-67 778.63	3 531 657.75		
L122	-67 379.92	3 533 715.88			R122	-67 792.76	3 531 594.94		
L123	-67 399.21	3 533 651.21			R123	-67 808.90	3 531 538.80		
L124	-67 413.20	3 533 599.71			R124	-67 838.93	3 531 456.75		
L125	-67 425.43	3 533 547.38			R125	-67 858.03	3 531 414.63		
L126	-67 436.59	3 533 494.28			R126	-67 885.27	3 531 367.12		
L127	-67 446.53	3 533 440.85			R127	-67 946.65	3 531 266.74		
L128	-67 521.00	3 533 001.18			R128	-68 006.65	3 531 192.12		
L129	-67 542.57	3 532 873.87			R129	-68 194.52	3 530 982.83		
L130	-67 756.26	3 531 618.41			R130	-68 207.16	3 530 981.33		
L131	-67 785.06	3 531 511.47			R131	-68 222.96	3 530 960.80		
L132	-67 815.61	3 531 435.18			R132	-68 220.42	3 530 951.40		
L133	-67 863.14	3 531 340.42			R133	-68 260.08	3 530 896.75		
L134	-67 902.74	3 531 273.97			R134	-68 301.24	3 530 826.81		
L135	-67 954.88	3 531 195.90			R135	-68 304.38	3 530 820.39		
L136	-68 049.28	3 531 100.11			R136	-68 325.03	3 530 778.13		
L137	-68 175.50	3 530 959.11			R137	-68 354.89	3 530 702.82		
L138	-68 176.86	3 530 941.09			R138	-68 375.98	3 530 637.79		
L139	-68 191.55	3 530 925.48			R139	-68 386.96	3 530 571.82		
L140	-68 201.79	3 530 927.18			R140	-68 396.01	3 530 490.87		
L141	-68 237.91	3 530 876.72			R141	-68 395.73	3 530 411.53		
L142	-68 266.76	3 530 830.42			R142	-68 388.73	3 530 337.16		
L143	-68 288.35	3 530 787.25			R143	-68 377.45	3 530 269.95		
L144	-68 307.29	3 530 745.13			R144	-68 328.92	3 530 055.04		
L145	-68 327.99	3 530 690.94			R145	-68 318.26	3 530 001.91		
L146	-68 341.93	3 530 643.13			R146	-68 308.85	3 529 934.42		
L147	-68 350.45	3 530 607.19			R147	-68 303.75	3 529 852.81		
L148	-68 358.66	3 530 563.45			R148	-68 315.40	3 529 679.83		
L149	-68 363.06	3 530 511.66			R149	-68 334.74	3 529 588.77		
L150	-68 366.72	3 530 468.62			R150	-68 347.21	3 529 542.02		
L151	-68 365.70	3 530 401.08			R151	-68 366.28	3 529 487.37		
L152	-68 360.83	3 530 347.03			R152	-68 388.98	3 529 429.21		
L153	-68 346.77	3 530 268.67			R153	-68 423.80	3 529 362.85		
					<div> <div>Vel</div> <div>15</div> <div>Van</div> <div>17</div> <div>Sheet</div> <div>of</div> <div>P1195/20</div> </div>				

PADRESERWE KOÖRDINATE / ROAD RESERVE CO-ORDINATES																			
LINKERKANT/LEFT HAND SIDE					REGTERKANT/RIGHT HAND SIDE														
	Y		X	WG 25°		Y		X											
L154	-68 289.96	3	530 017.64		R154	-68 471.66	3	529 282.51											
L155	-68 275.02	3	529 910.75		R155	-68 519.57	3	529 217.56											
L156	-68 274.27	3	529 803.15		R156	-69 251.21	3	528 314.54											
L157	-68 283.76	3	529 695.06		R157	-69 672.97	3	527 793.98											
L158	-68 311.18	3	529 562.45		R158	-69 727.12	3	527 734.03											
L159	-68 345.26	3	529 458.64		R159	-69 799.30	3	527 644.25											
L160	-68 411.56	3	529 309.49		R160	-69 811.50	3	527 623.05											
L161	-68 495.84	3	529 199.45		R161	-70 257.64	3	527 071.43											
L162	-69 234.82	3	528 287.33		R162	-70 352.74	3	526 941.87											
L163	-69 816.99	3	527 568.75		R163	-70 416.32	3	526 838.99											
L164	-70 028.14	3	527 308.13		R164	-70 473.17	3	526 730.44											
L165	-70 211.84	3	527 081.39		R165	-70 514.73	3	526 640.37											
L166	-70 254.65	3	527 027.53		R166	-70 568.15	3	526 507.74											
L167	-70 337.32	3	526 909.08		R167	-70 606.03	3	526 413.67											
L168	-70 378.82	3	526 840.93		R168	-71 258.13	3	524 794.70											
L169	-70 442.16	3	526 726.74		R169	-71 367.94	3	524 522.03											
L170	-70 487.27	3	526 627.61		R170	-71 616.36	3	523 905.28											
L171	-70 581.84	3	526 393.75		R171	-72 492.31	3	521 730.48											
L172	-71 220.60	3	524 807.74		R172	-72 546.60	3	521 578.41											
L173	-71 338.10	3	524 516.07		R173	-72 561.60	3	521 522.20											
L174	-71 604.14	3	523 855.46		R174	-72 589.43	3	521 417.96											
L175	-72 474.78	3	521 693.72		R175	-72 621.14	3	521 241.13											
L176	-72 491.45	3	521 649.65		R176	-72 631.69	3	521 144.99											
L177	-72 513.85	3	521 583.92		R177	-72 637.45	3	521 037.31											
L178	-72 532.35	3	521 514.63		R178	-72 660.21	3	520 132.09											
L179	-72 550.29	3	521 447.41		R179	-72 663.01	3	520 020.06											
L180	-72 570.88	3	521 355.22		R180	-72 668.87	3	519 965.56											
L181	-72 584.46	3	521 286.37		R181	-72 688.49	3	519 819.60											
L182	-72 592.06	3	521 234.87		R182	-72 699.67	3	519 763.25											
L183	-72 602.00	3	521 142.91		R183	-73 492.89	3	516 767.16											
L184	-72 607.94	3	521 038.08		R184	-73 879.45	3	515 288.95											
L185	-72 631.45	3	520 077.66		R185	-73 893.40	3	515 232.46											
L186	-72 642.84	3	519 934.82		R186	-73 913.35	3	515 115.70											
L187	-72 668.39	3	519 776.74		R187	-73 926.00	3	515 041.67											
L188	-72 694.62	3	519 665.31		R188	-74 162.70	3	513 739.00											
L189	-73 441.61	3	516 836.54		R189	-74 750.24	3	510 505.42											
L190	-73 470.80	3	516 726.01		R190	-74 988.10	3	509 196.33											
L191	-73 798.00	3	515 486.95		R191	-75 025.20	3	508 992.16											
L192	-73 834.09	3	515 350.28		R192	-75 112.55	3	508 522.13											
L193	-73 847.15	3	515 279.56		R193	-75 192.63	3	508 091.25											
L194	-73 867.70	3	515 198.62		R194	-75 568.14	3	506 227.46											
L195	-73 896.15	3	515 041.95		R195	-75 799.83	3	505 077.46											
L196	-74 141.97	3	513 688.38		R196	-75 846.29	3	504 846.85											
L197	-74 717.88	3	510 517.24		R197	-75 893.36	3	504 613.22											
L198	-74 959.25	3	509 188.18		R198	-75 999.10	3	504 088.43											
L199	-75 077.97	3	508 534.46		R199	-76 006.58	3	504 051.26											
L200	-75 129.47	3	508 250.88		R200	-76 018.66	3	503 991.32											
L201	-75 539.41	3	506 217.65		R201	-76 031.86	3	503 889.83											
L202	-75 768.18	3	505 082.95		R202	-75 990.01	3	503 766.54											
L203	-75 815.07	3	504 850.43																
L204	-75 862.09	3	504 617.21																
					<table><tr><td>Vel</td><td>16</td><td>Van</td><td>17</td><td>P1195/20</td></tr><tr><td>Sheet</td><td></td><td>of</td><td></td><td></td></tr></table>					Vel	16	Van	17	P1195/20	Sheet		of		
Vel	16	Van	17	P1195/20															
Sheet		of																	

This gazette is also available free online at www.gpwonline.co.za