
GOVERNMENT NOTICES • GOEWERMENTSKENNISGEWINGS

DEPARTMENT OF TRANSPORT

NO. 6650

19 September 2025

**THE SOUTH AFRICAN NATIONAL ROADS
AGENCY SOC LIMITED****Registration No: 1998/009584/30**

DECLARATION AMENDMENT OF NATIONAL ROAD R26 SECTION 8

AMENDMENT OF DECLARATION No. 4014 OF 2023.

By virtue of section 40(1)(b) of the South African National Roads Agency Limited and the National Roads Act 1998 (Act No. 7 of 1998), I hereby amend Declaration No. 4014 of 2023 by substituting a part of paragraph A of the Schedule, being the descriptive declaration of the route from Ficksburg up to Fouriesburg, with the accompanying sheets 1 to 15 of Plan No. P1254/25.

(National Road R26 Section 8: Ficksburg – Fouriesburg)
MINISTER OF TRANSPORT

DEPARTEMENT VAN VERVOER

NO. 6650

19 September 2025

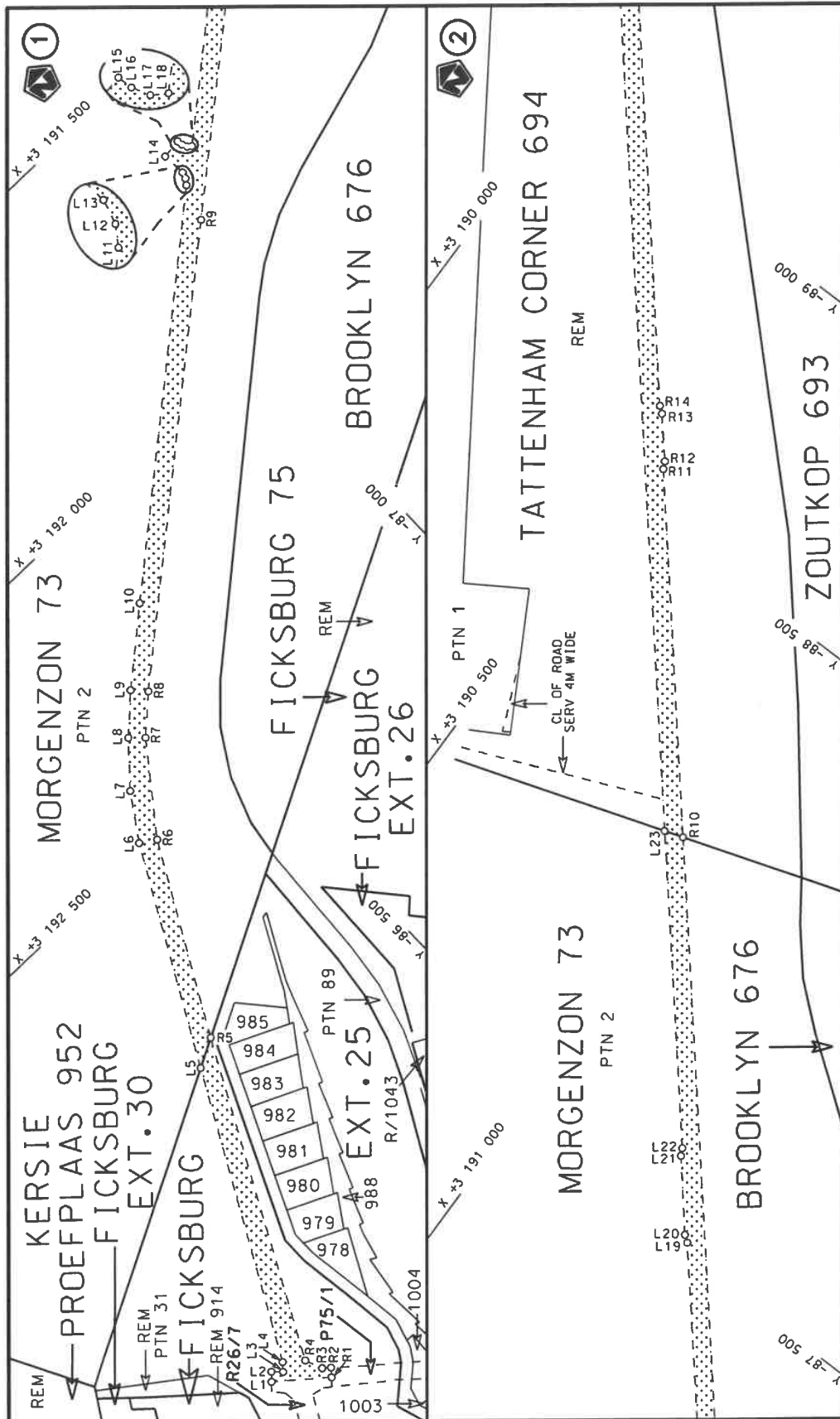
**DIE SUID-AFRIKAANSE NASIONALE
PADAGENTSKAP MSB BEPERK**Registrasie No: 1998/009584/30

VERKLARING WYSIGING VAN NASIONALE PAD R26 SEKSIE 8

WYSIGING VAN VERKLARING No. 4014 VAN 2023.

Kragtens Artikel 40(1)(b) van die Suid-Afrikaanse Nasionale Padagentskap Beperk en Nasionale Paaie Wet 1998 (Wet No. 7 van 1998), wysig ek hiermee Verklaring No. 4014 van 2024 deur 'n gedeelte van paragraaf A van die Skedule te vervang, synde die gedeelte van die beskrywende verklaring van die pad vanaf Ficksburg tot by Fouriesburg, met bygaande velle 1 tot 15 van Plan No. P1254/25.

(Nasionale Pad R26 Seksie 8: Ficksburg – Fouriesburg)
MINISTER VAN VERVOER



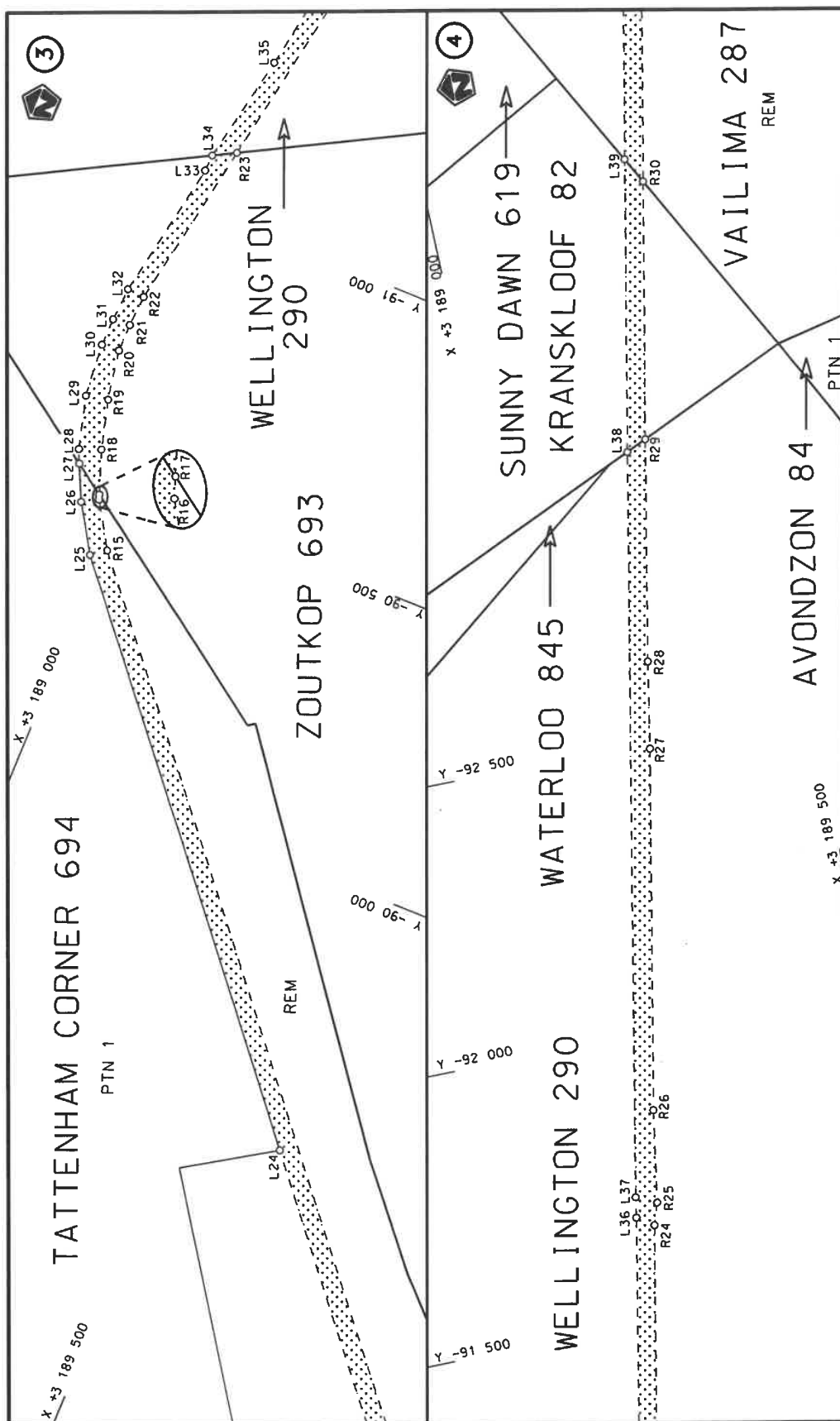
Vel
Sheet 1 of 15
Plan P1254/25

steldie padreserwe voor van 'n gedeelte
represents the road reserve of a portion
van Nasionale Roete R26 Seksie
of National Route Section

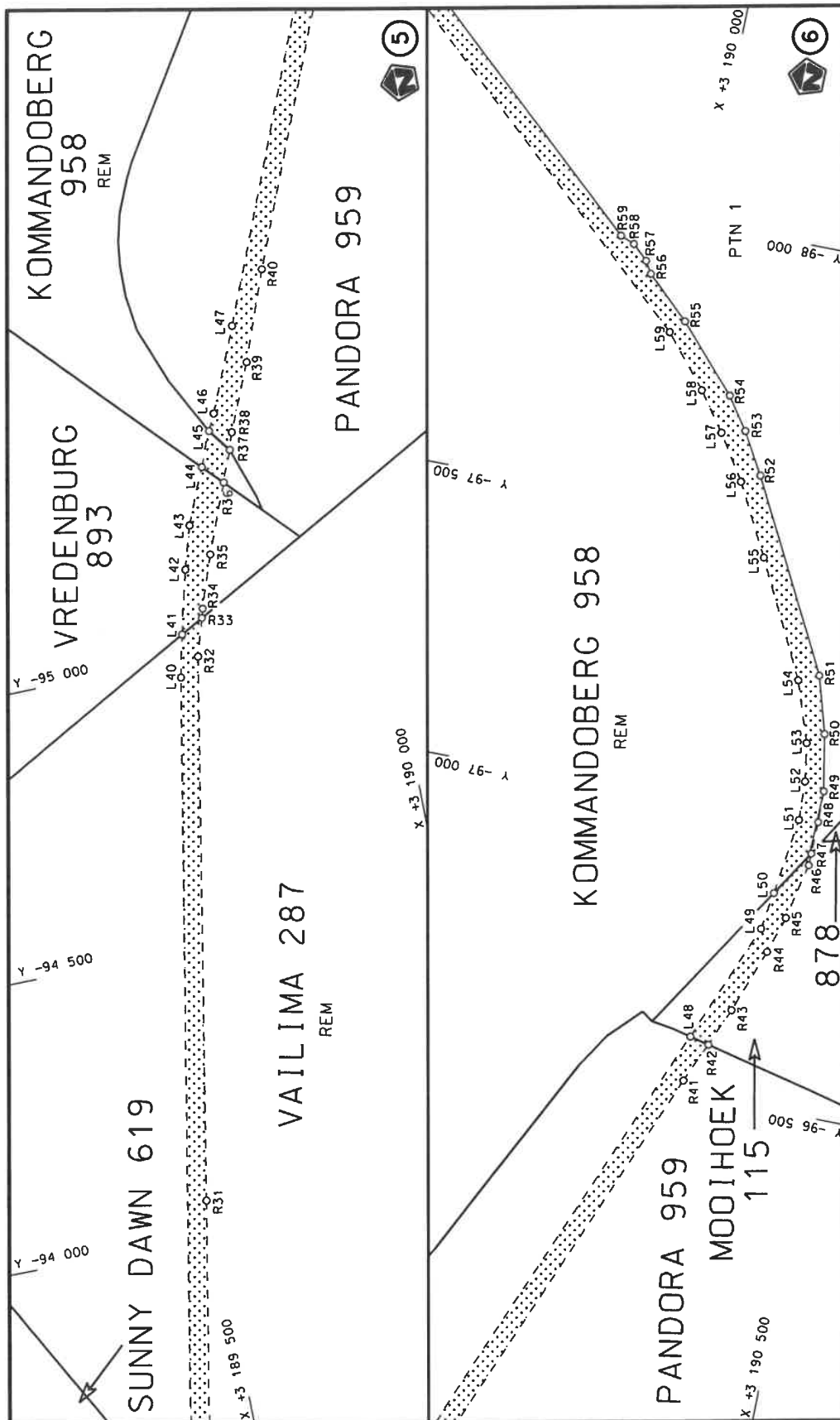



Die figuur getoon
The figure shown

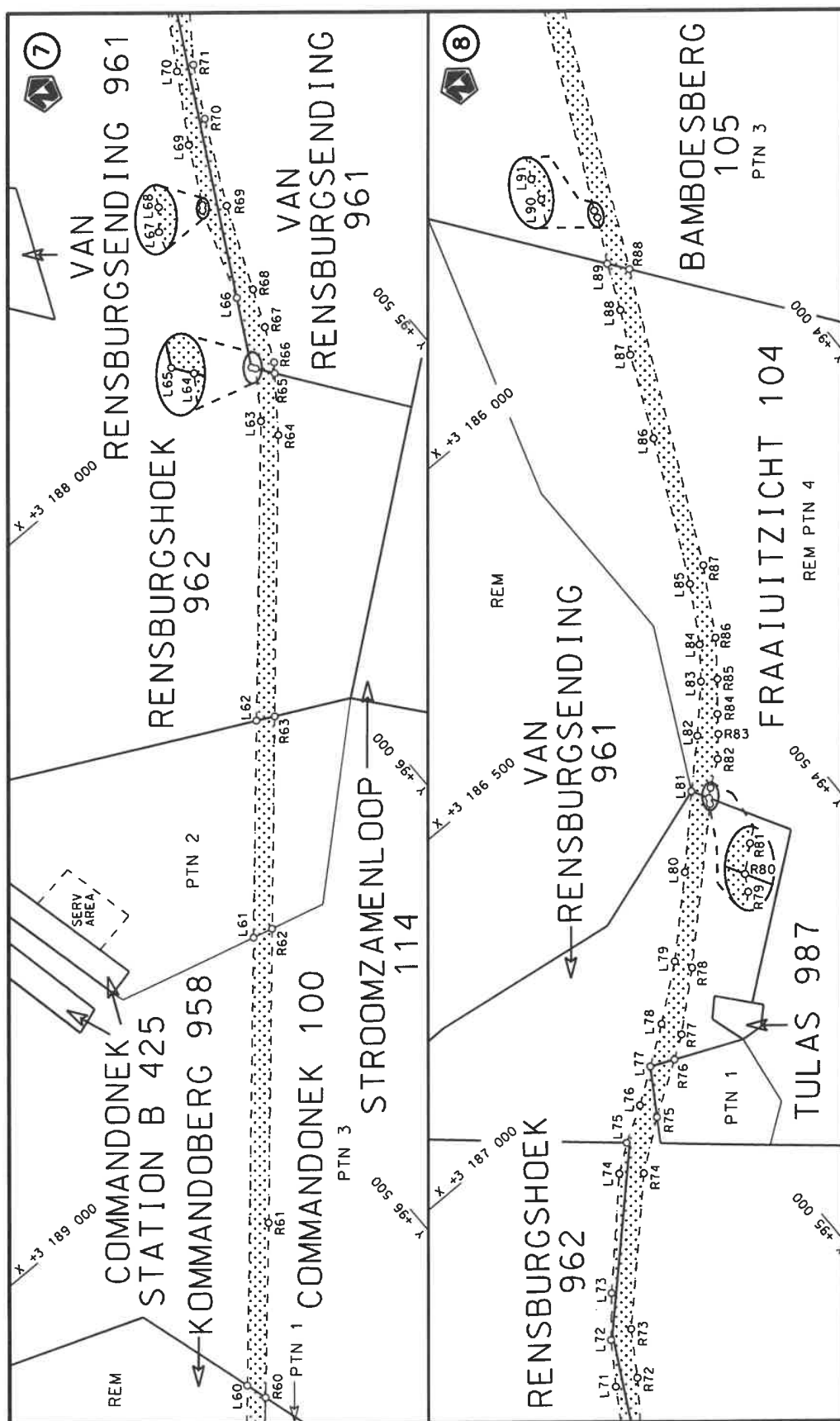
Die Suid Afrikaanse Nasionale Padagentskap MSB Bpk
The South African National Roads Agency SOC Ltd




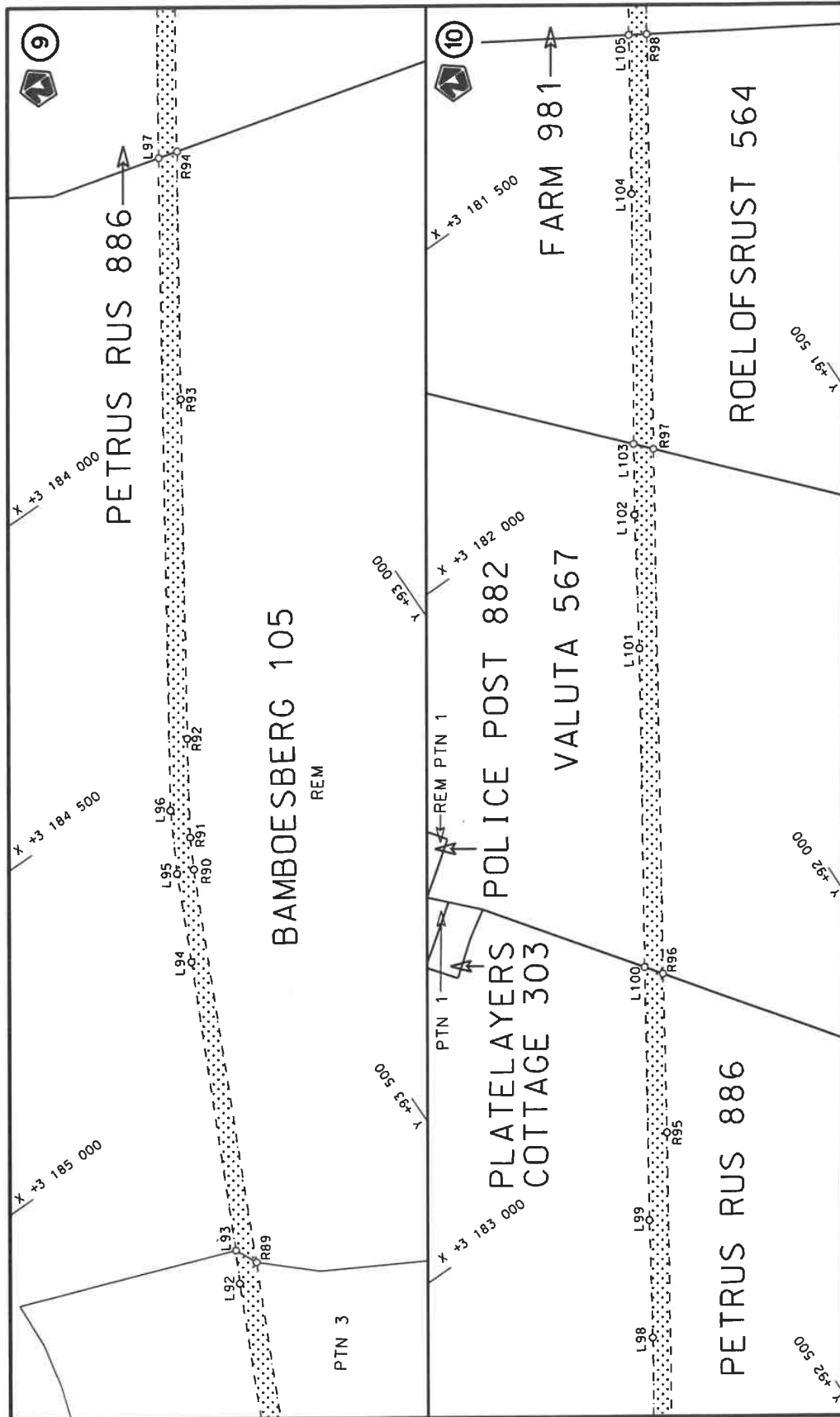
Die Suid Afrikaanse Nasionale Padagentskap MSB Bpk The South African National Roads Agency SOC Ltd	Die figuur getoon The figure shown	steldie podreserwe voor van 'n gedeelte represents the road reserve of a portion van Nasionale Roete R26 Seksie 8 of National Route	Vel Sheet 2 of 15 Plan P1254/25
---	---------------------------------------	--	---------------------------------------



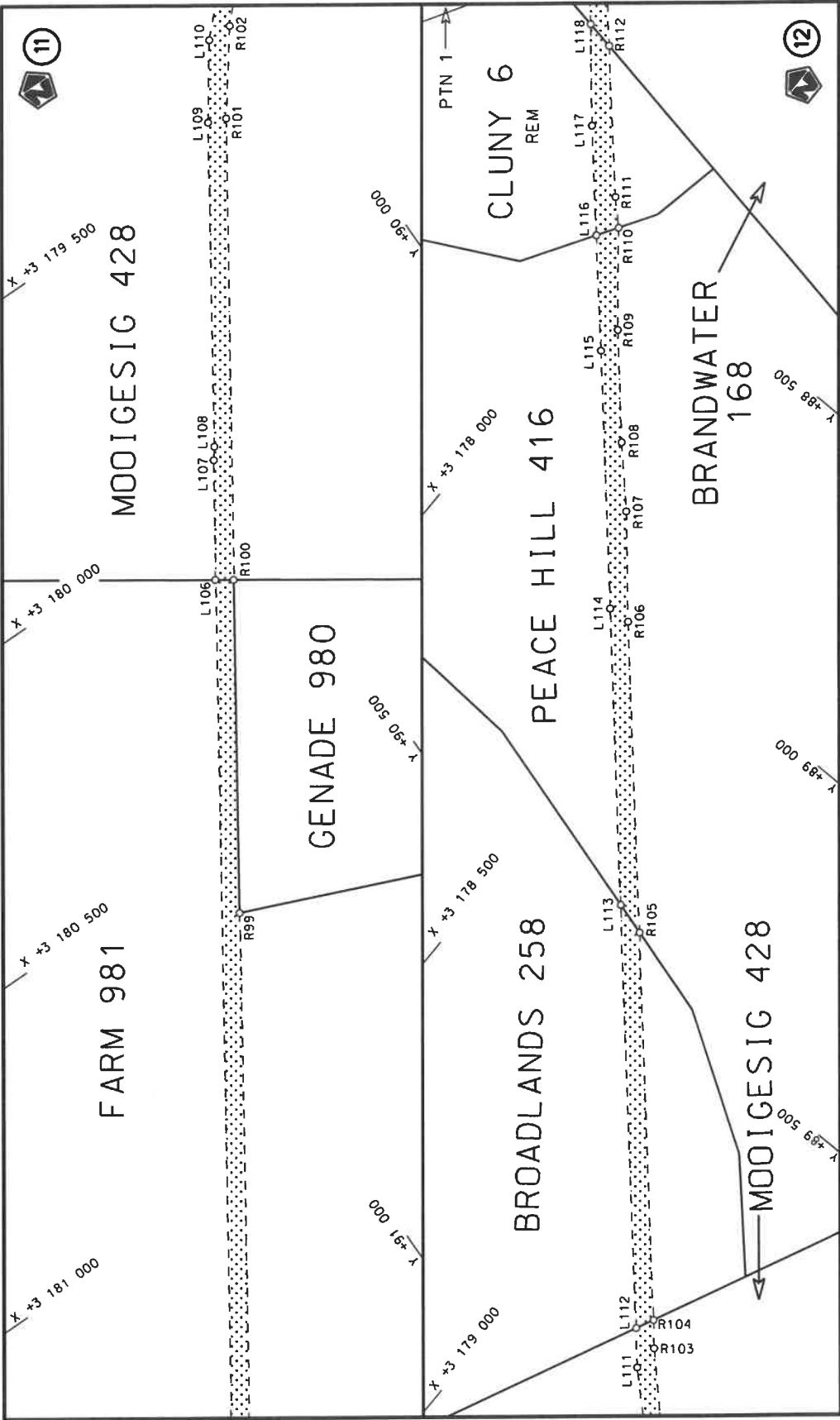
Die Suid Afrikaanse Nasionale Padagentskap MSB Bpk The South African National Roads Agency SOC Ltd	Die figuur getoon The figure shown	 steldie padreserwe voor van 'n gedeelte represents the road reserve of a portion van Nasionale Roete R26 of National Route	Val Sheet 3 of 15 Plan P1254/25
---	---------------------------------------	--	---------------------------------------




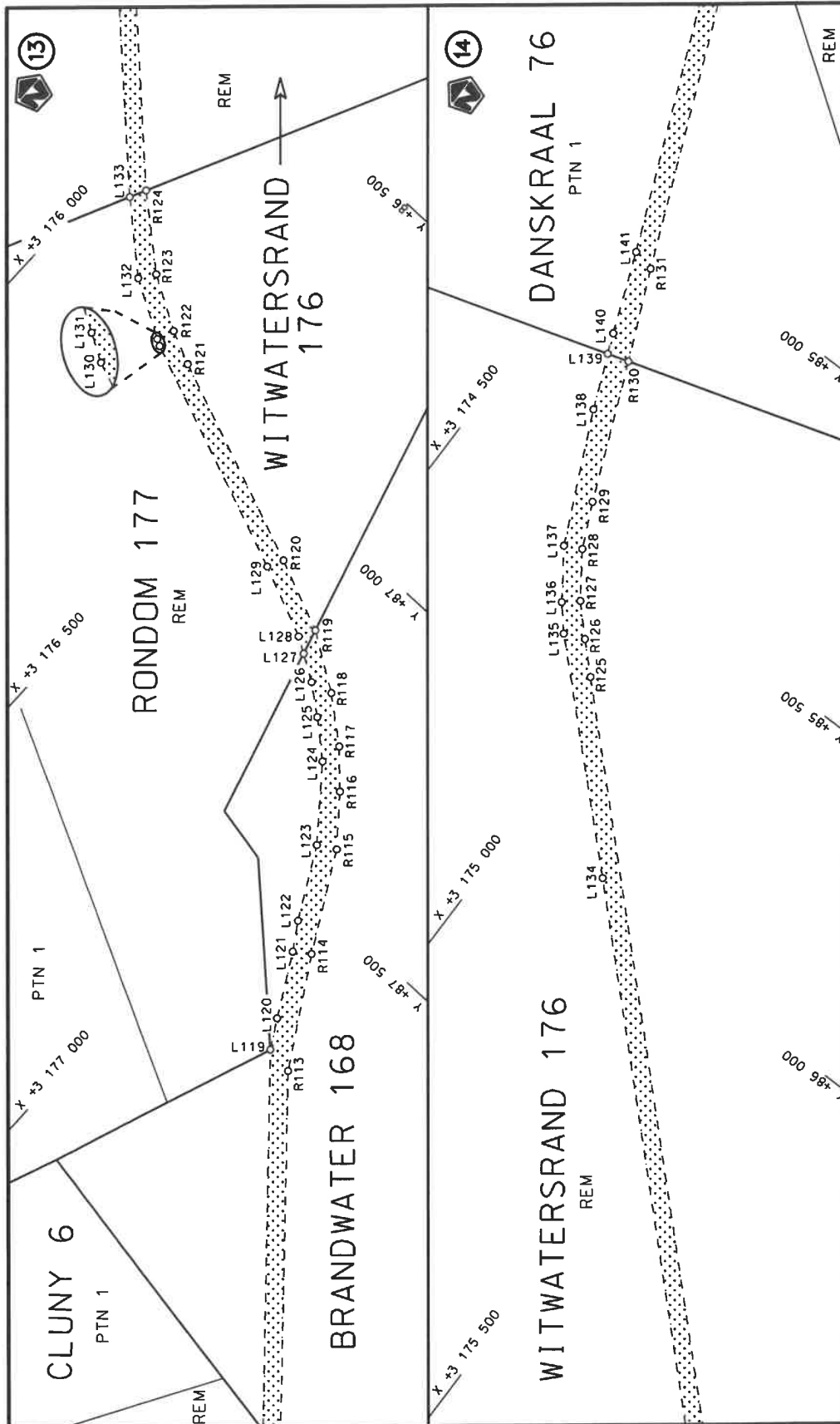
Die Suid Afrikaanse Nasionale Padagentskap MSB Bpk The South African National Roads Agency SOC Ltd	Die figuur getoon The figure shown	 steldie padreserwe voor van 'n gedeelte represents the road reserve of a portion van Nasionale Roete R26 of National Route	Vel Sheet 4 of 15 Plan P1254/25
---	---------------------------------------	--	---------------------------------------



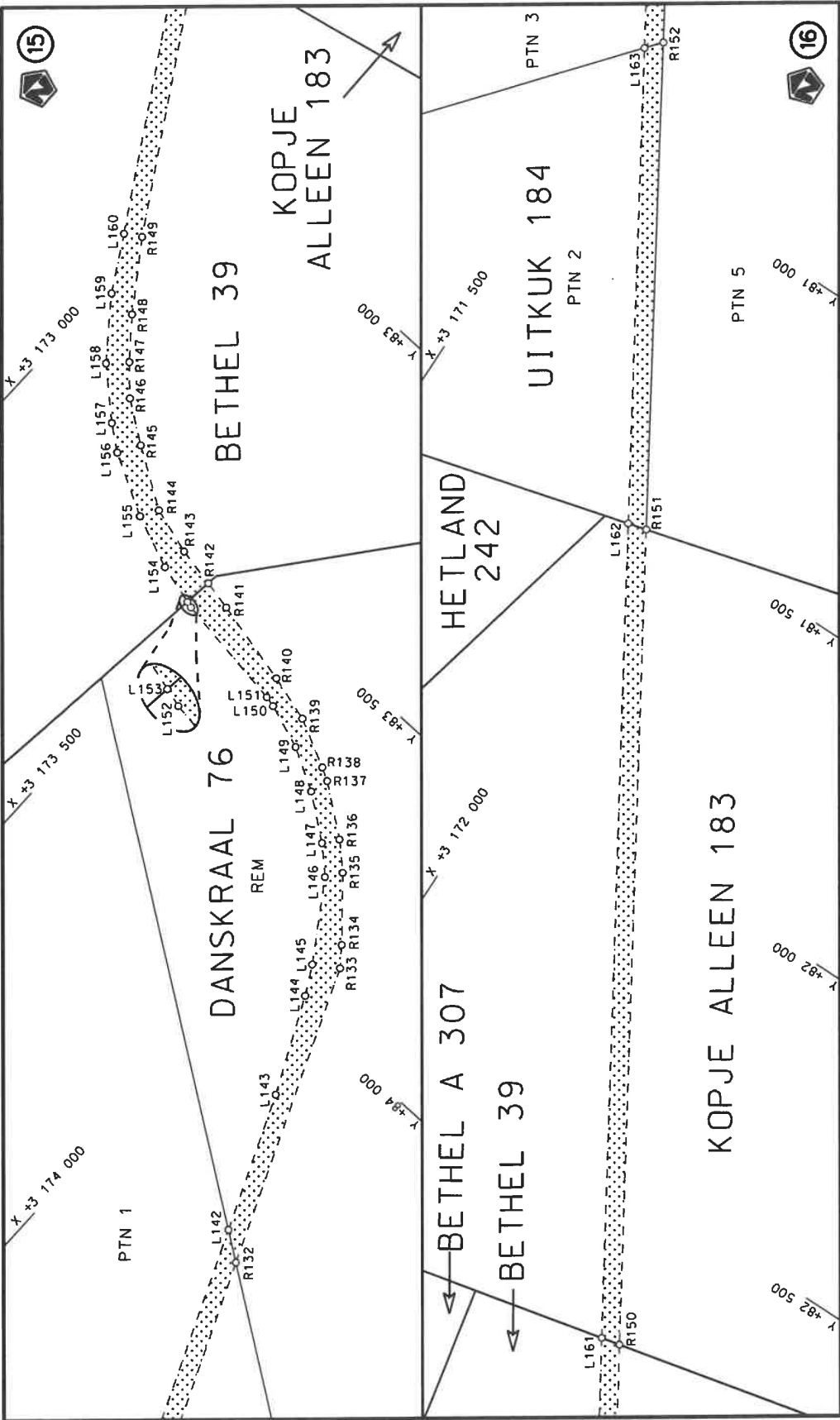
Die Suid Afrikaanse Nasionale Padagentskap MSB Bpk The South African National Roads Agency SOC Ltd	Die figuur getoon The figure shown	stel die podreserwe voor van 'n gedeelte represents the road reserve of a portion van Nasionale Roete R26 Seksie of National Route Section	Vel Sheet 5 of 15
		8	Plan P1254/25

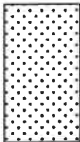


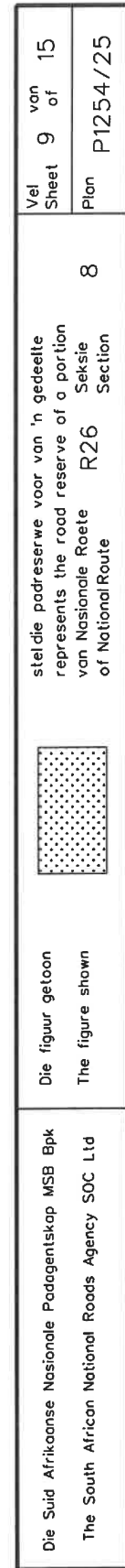
Die Suid Afrikaanse Nasionale Padagentskap MSB Bpk The South African National Roads Agency SOC Ltd	Die figuur getoon The figure shown		steldie padreserwe voor van 'n gedeelte represents the road reserve of a portion van Nasionale Roete R26 Sektie of National Route Section	8	Vel Sheet	6 of	15
					Plan	P1254/25	

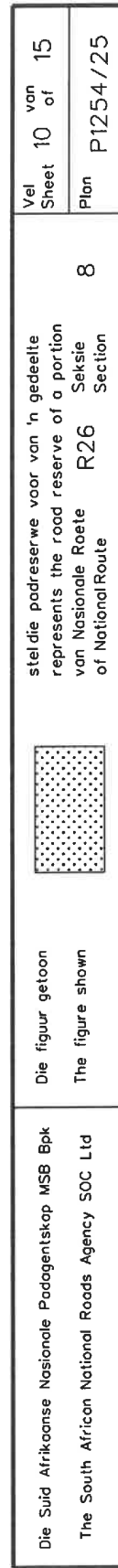


Die Suid Afrikaanse Nasionale Padagentskap MSB Bpk The South African National Roads Agency SOC Ltd	Die figuur getoon The figure shown	staldie padreserwe voor van 'n gedeelte represents the road reserve of a portion van Nasionale Roete R26 Seksie of National Route Section	Vel Sheet 7 of 15 Plan P1254/25
---	---------------------------------------	--	---------------------------------------



Die Suid Afrikaanse Nasionale Padagentskap MSB Bpk The South African National Roads Agency SOC Ltd	Die figuur getoon The figure shown		steil die padreserwe voor van 'n gedeelte represents the road reserve of a portion van Nasionale Roete R26 Seksie of National Route Section	
			Vel Sheet	8 of 15
			Plan P1254/25	





PADRESERVE KOÖRDINATE / ROAD RESERVE CO-ORDINATES									
LINKERKANT/LEFT HAND SIDE					REGTERKANT/RIGHT HAND SIDE				
	Y	X	WG 27°		Y	X			
L1	-85 783.18	3 193 333.52		R1	-85 864.60	3 193 400.37			
L2	-85 795.14	3 193 320.67		R2	-85 875.54	3 193 387.56			
L3	-85 809.73	3 193 335.03		R3	-85 863.74	3 193 377.59			
L4	-85 820.99	3 193 322.08		R4	-85 851.78	3 193 347.20			
L5	-86 071.56	3 192 849.22		R5	-86 120.87	3 192 823.00			
L6	-86 265.54	3 192 487.94		R6	-86 292.65	3 192 505.36			
L7	-86 317.14	3 192 410.83		R7	-86 400.73	3 192 361.70			
L8	-86 378.83	3 192 341.01		R8	-86 460.16	3 192 306.26			
L9	-86 439.03	3 192 283.22		R9	-87 094.99	3 191 770.53			
L10	-86 555.39	3 192 183.85		R10	-88 086.03	3 190 937.77			
L11	-87 117.97	3 191 709.00		R11	-88 581.53	3 190 521.40			
L12	-87 125.01	3 191 699.23		R12	-88 594.01	3 190 515.45			
L13	-87 128.35	3 191 688.17		R13	-88 657.58	3 190 461.14			
L14	-87 125.54	3 191 646.53		R14	-88 666.30	3 190 450.15			
L15	-87 159.56	3 191 642.41		R15	-90 384.95	3 189 005.48			
L16	-87 161.12	3 191 651.77		R16	-90 461.76	3 188 958.54			
L17	-87 165.22	3 191 660.78		R17	-90 469.94	3 188 955.60			
L18	-87 171.95	3 191 665.90		R18	-90 544.61	3 188 928.77			
L19	-87 523.05	3 191 369.93		R19	-90 629.97	3 188 906.51			
L20	-87 531.64	3 191 358.14		R20	-90 716.69	3 188 891.05			
L21	-87 637.99	3 191 269.55		R21	-90 765.12	3 188 891.85			
L22	-87 650.26	3 191 263.14		R22	-90 819.61	3 188 895.17			
L23	-88 075.56	3 190 905.21		R23	-91 114.24	3 188 949.89			
L24	-89 525.00	3 189 686.22		R24	-91 667.37	3 189 052.61			
L25	-90 365.87	3 188 980.88		R25	-91 705.50	3 189 064.89			
L26	-90 446.24	3 188 931.04		R26	-91 865.88	3 189 089.59			
L27	-90 507.17	3 188 902.58		R27	-92 489.29	3 189 205.75			
L28	-90 530.88	3 188 892.02		R28	-92 640.05	3 189 231.47			
L29	-90 621.68	3 188 867.75		R29	-93 022.87	3 189 301.92			
L30	-90 714.94	3 188 859.66		R30	-93 467.23	3 189 384.48			
L31	-90 763.42	3 188 861.06		R31	-94 060.42	3 189 494.68			
L32	-90 821.87	3 188 864.91		R32	-94 999.06	3 189 665.47			
L33	-91 064.82	3 188 909.74		R33	-95 064.21	3 189 684.22			
L34	-91 093.68	3 188 911.34		R34	-95 079.88	3 189 688.73			
L35	-91 285.18	3 188 950.66		R35	-95 170.61	3 189 721.17			
L36	-91 686.54	3 189 024.05		R36	-95 289.49	3 189 767.23			
L37	-91 722.01	3 189 029.48		R37	-95 343.50	3 189 788.60			
L38	-93 007.04	3 189 266.81		R38	-95 373.06	3 189 798.95			
L39	-93 511.67	3 189 360.01		R39	-95 488.44	3 189 847.99			
L40	-94 969.16	3 189 629.20		R40	-95 643.06	3 189 905.24			
L41	-95 042.88	3 189 645.04		R41	-96 522.02	3 190 263.76			
L42	-95 153.01	3 189 673.40		R42	-96 591.85	3 190 293.54			
L43	-95 227.63	3 189 695.46		R43	-96 659.02	3 190 322.19			
L44	-95 323.53	3 189 735.11		R44	-96 771.25	3 190 363.25			
L45	-95 383.15	3 189 759.75		R45	-96 835.89	3 190 383.74			
L46	-95 411.49	3 189 774.63		R46	-96 933.82	3 190 404.08			
L47	-95 555.82	3 189 835.40		R47	-96 954.78	3 190 404.59			
L48	-96 599.74	3 190 259.78		R48	-97 011.24	3 190 405.97			
L49	-96 808.89	3 190 344.81		R49	-97 066.11	3 190 405.13			
L50	-96 874.68	3 190 353.90		R50	-97 164.87	3 190 386.67			
L51	-97 008.63	3 190 372.41		R51	-97 263.41	3 190 357.13			
					Vel Sheet	11	Van of	15	P1254/25

PADRESERVE KOÖRDINATE / ROAD RESERVE CO-ORDINATES														
LINKERKANT/LEFT HAND SIDE					REGTERKANT/RIGHT HAND SIDE									
	Y		X	WG 27°		Y		X						
L52	-97 076.82	3	190	369.46	R52	-97 587.10	3	190	185.52					
L53	-97 143.36	3	190	358.71	R53	-97 658.44	3	190	143.90					
L54	-97 248.52	3	190	322.51	R54	-97 714.16	3	190	104.49					
L55	-97 447.70	3	190	220.81	R55	-97 826.30	3	190	001.60					
L56	-97 570.38	3	190	154.90	R56	-97 896.14	3	189	926.18					
L57	-97 647.88	3	190	103.95	R57	-97 917.00	3	189	913.46					
L58	-97 714.24	3	190	055.33	R58	-97 941.72	3	189	886.43					
L59	-97 803.20	3	189	979.38	R59	-97 951.45	3	189	861.51					
L60	-98 306.78	3	189	413.17	R60	-98 317.35	3	189	450.54					
L61	-98 830.17	3	188	824.68	R61	-98 522.68	3	189	221.18					
					R62	-98 865.38	3	188	834.46					
LINKERKANT/LEFT HAND SIDE					REGTERKANT/RIGHT HAND SIDE									
	Y		X	WG 29°		Y		X						
L62	96 156.63	3	188	515.31	R63	96 127.00	3	188	530.15					
L63	95 813.24	3	188	115.88	R64	95 805.28	3	188	154.57					
L64	95 761.57	3	188	039.73	R65	95 741.16	3	188	067.70					
L65	95 766.22	3	188	033.37	R66	95 729.75	3	188	052.23					
L66	95 707.57	3	187	922.65	R67	95 702.42	3	187	993.42					
L67	95 655.11	3	187	765.51	R68	95 676.00	3	187	929.15					
L68	95 649.02	3	187	758.03	R69	95 617.38	3	187	786.33					
L69	95 599.66	3	187	661.45	R70	95 549.34	3	187	644.97					
L70	95 533.17	3	187	548.96	R71	95 504.18	3	187	559.15					
L71	95 472.56	3	187	449.86	R72	95 433.37	3	187	462.21					
L72	95 426.42	3	187	381.65	R73	95 386.89	3	187	389.38					
L73	95 372.54	3	187	319.09	R74	95 194.01	3	187	193.42					
L74	95 227.50	3	187	165.88	R75	95 112.95	3	187	133.24					
L75	95 182.99	3	187	133.20	R76	95 024.03	3	187	075.35					
L76	95 122.74	3	187	097.32	R77	94 986.43	3	187	048.83					
L77	95 065.01	3	187	057.20	R78	94 896.62	3	186	971.02					
L78	95 001.45	3	187	011.97	R79	94 688.28	3	186	771.03					
L79	94 913.09	3	186	942.66	R80	94 683.01	3	186	761.85					
L80	94 798.97	3	186	834.09	R81	94 669.23	3	186	749.89					
L81	94 698.93	3	186	732.79	R82	94 626.95	3	186	718.60					
L82	94 628.50	3	186	663.95	R83	94 597.70	3	186	685.60					
L83	94 562.42	3	186	594.85	R84	94 576.75	3	186	657.71					
L84	94 522.69	3	186	543.35	R85	94 537.42	3	186	610.19					
L85	94 467.70	3	186	450.82	R86	94 493.49	3	186	552.29					
L86	94 353.53	3	186	212.78	R87	94 428.52	3	186	440.61					
L87	94 291.35	3	186	073.24	R88	94 196.75	3	185	957.53					
L88	94 254.39	3	186	001.46	R89	93 888.13	3	185	314.29					
L89	94 220.33	3	185	924.97	R90	93 586.37	3	184	682.09					
L90	94 181.18	3	185	851.08	R91	93 559.63	3	184	632.25					
L91	94 177.92	3	185	838.14	R92	93 465.83	3	184	486.16					
L92	93 932.39	3	185	328.22	R93	93 138.02	3	183	988.23					
L93	93 905.86	3	185	276.52	R94	92 898.45	3	183	626.05					
L94	93 681.88	3	184	814.14	R95	92 497.13	3	183	019.33					
L95	93 614.73	3	184	671.79	R96	92 345.39	3	182	785.86					
L96	93 561.20	3	184	573.67	R97	91 838.22	3	182	016.01					
L97	92 931.46	3	183	617.44	R98	91 437.61	3	181	407.99					
					<table><tr><td>Vel Sheet</td><td>12</td><td>Van of</td><td>15</td><td>P1254/25</td></tr></table>					Vel Sheet	12	Van of	15	P1254/25
Vel Sheet	12	Van of	15	P1254/25										

PADRESERVE KOÖRDINATE / ROAD RESERVE CO-ORDINATES						
LINKERKANT/LEFT HAND SIDE				REGTERKANT/RIGHT HAND SIDE		
	Y	X	WG 29°		Y	X
L98	92 721.90	3 183 302.61		R99	90 921.62	3 180 625.09
L99	92 610.08	3 183 128.94		R100	90 599.91	3 180 136.88
L100	92 365.38	3 182 758.09		R101	90 155.04	3 179 460.95
L101	92 056.45	3 182 289.89		R102	90 058.71	3 179 330.42
L102	91 931.10	3 182 091.53		R103	89 971.36	3 179 244.75
L103	91 862.34	3 181 988.86		R104	89 934.26	3 179 212.02
L104	91 617.55	3 181 623.33		R105	89 423.52	3 178 761.49
L105	91 464.65	3 181 391.23		R106	89 013.96	3 178 400.21
L106	90 626.37	3 180 118.75		R107	88 866.29	3 178 274.85
L107	90 510.63	3 179 943.08		R108	88 777.99	3 178 191.68
L108	90 496.41	3 179 924.40		R109	88 629.76	3 178 061.36
L109	90 185.07	3 179 449.03		R110	88 491.65	3 177 948.01
L110	90 101.89	3 179 330.89		R111	88 452.40	3 177 909.79
L111	90 016.20	3 179 243.07		R112	88 255.83	3 177 732.48
L112	89 964.50	3 179 197.41		R113	87 753.87	3 177 290.75
L113	89 407.01	3 178 705.06		R114	87 575.43	3 177 182.99
L114	89 015.93	3 178 360.89		R115	87 411.31	3 177 092.30
L115	88 676.75	3 178 061.73		R116	87 333.32	3 177 028.14
L116	88 526.19	3 177 926.19		R117	87 276.00	3 176 973.93
L117	88 381.64	3 177 798.50		R118	87 216.58	3 176 900.38
L118	88 246.93	3 177 683.14		R119	87 155.27	3 176 806.49
L119	87 747.94	3 177 243.19		R120	87 102.72	3 176 682.06
L120	87 699.16	3 177 214.39		R121	86 962.50	3 176 327.00
L121	87 594.71	3 177 155.87		R122	86 936.46	3 176 270.15
L122	87 548.86	3 177 126.17		R123	86 884.02	3 176 180.52
L123	87 429.14	3 177 061.16		R124	86 788.94	3 176 069.19
L124	87 314.84	3 176 969.84		R125	85 690.91	3 174 945.48
L125	87 263.97	3 176 910.86		R126	85 643.94	3 174 897.68
L126	87 225.98	3 176 862.09		R127	85 595.63	3 174 851.24
L127	87 199.25	3 176 818.89		R128	85 521.30	3 174 799.22
L128	87 182.28	3 176 791.47		R129	85 445.30	3 174 763.67
L129	87 129.88	3 176 668.07		R130	85 213.22	3 174 666.12
L130	86 972.22	3 176 269.96		R131	85 060.63	3 174 598.71
L131	86 965.68	3 176 258.53		R132	84 402.17	3 174 321.10
L132	86 910.17	3 176 162.10		R133	83 896.22	3 174 109.26
L133	86 816.67	3 176 055.77		R134	83 863.97	3 174 084.00
L134	85 958.08	3 175 174.15		R135	83 769.16	3 174 000.18
L135	85 658.36	3 174 862.37		R136	83 729.72	3 173 956.49
L136	85 616.80	3 174 826.52		R137	83 668.40	3 173 871.22
L137	85 536.03	3 174 770.03		R138	83 656.68	3 173 848.85
L138	85 315.68	3 174 667.26		R139	83 616.69	3 173 765.29
L139	85 224.33	3 174 629.14		R140	83 595.26	3 173 683.66
L140	85 189.50	3 174 614.61		R141	83 562.79	3 173 534.36
L141	85 052.50	3 174 560.72		R142	83 552.97	3 173 482.31
L142	84 368.50	3 174 272.52		R143	83 539.92	3 173 413.16
L143	84 136.13	3 174 174.61		R144	83 516.27	3 173 331.65
L144	83 973.07	3 174 096.30		R145	83 453.31	3 173 231.19
L145	83 923.97	3 174 068.58		R146	83 405.10	3 173 161.74
L146	83 795.47	3 173 981.67		R147	83 358.80	3 173 118.34
L147	83 755.02	3 173 937.82		R148	83 293.86	3 173 065.38
L148	83 700.93	3 173 862.70		R149	83 182.20	3 172 986.76
				Vel Sheet 13	Van of 15	P1254/25

PADRESERWE KOÖRDINATE / ROAD RESERVE CO-ORDINATES									
LINKERKANT/LEFT HAND SIDE					REGTERKANT/RIGHT HAND SIDE				
	Y	X	WG 29°			Y	X		
L149	83 661.51	3 173 790.08		R150	82 747.26	3 172 720.37			
L150	83 635.05	3 173 712.16		R151	81 525.76	3 171 974.16			
L151	83 631.04	3 173 693.42		R152	80 796.73	3 171 529.22			
L152	83 604.88	3 173 488.26		R153	80 328.51	3 171 246.19			
L153	83 601.79	3 173 476.86		R154	80 219.84	3 171 178.92			
L154	83 582.76	3 173 406.52		R155	79 975.92	3 170 930.02			
L155	83 546.15	3 173 313.82		R156	79 847.07	3 170 788.36			
L156	83 490.06	3 173 209.37		R157	79 634.99	3 170 565.93			
L157	83 458.19	3 173 167.52		R158	79 526.99	3 170 455.96			
L158	83 387.94	3 173 089.28		R159	79 501.49	3 170 429.98			
L159	83 290.74	3 173 013.95		R160	79 386.64	3 170 355.20			
L160	83 199.21	3 172 959.53		R161	79 359.12	3 170 339.08			
L161	82 754.48	3 172 687.67		R162	79 274.42	3 170 289.45			
L162	81 534.18	3 171 941.72		R163	79 084.60	3 170 191.54			
L163	80 822.86	3 171 506.90		R164	79 007.72	3 170 149.49			
L164	80 491.74	3 171 304.50		R165	79 004.47	3 170 147.61			
L165	80 337.00	3 171 203.41		R166	78 914.67	3 170 075.09			
L166	80 181.97	3 171 089.20		R167	78 826.76	3 169 978.89			
L167	79 993.34	3 170 892.00		R168	78 791.01	3 169 929.21			
L168	79 928.01	3 170 823.71		R169	78 762.46	3 169 878.15			
L169	79 884.14	3 170 781.32		R170	78 727.87	3 169 813.68			
L170	79 578.17	3 170 454.82		R171	78 619.76	3 169 472.11			
L171	79 535.01	3 170 418.47		R172	78 608.11	3 169 444.49			
L172	79 460.66	3 170 358.08		R173	78 593.94	3 169 417.71			
L173	79 406.76	3 170 320.17		R174	78 522.63	3 169 266.32			
L174	79 368.33	3 170 295.96		R175	78 485.12	3 169 190.07			
L175	79 351.25	3 170 285.20		R176	78 450.67	3 169 125.14			
L176	79 230.06	3 170 227.50		R177	78 392.74	3 169 000.55			
L177	79 032.71	3 170 129.67		R178	78 367.54	3 168 943.82			
L178	78 943.90	3 170 059.95		R179	78 330.15	3 168 849.22			
L179	78 862.45	3 169 960.52		R180	78 282.46	3 168 697.46			
L180	78 802.34	3 169 857.77		R181	78 203.05	3 168 408.02			
L181	78 713.66	3 169 656.81		R182	78 123.87	3 168 336.81			
L182	78 675.13	3 169 533.68		R183	78 075.92	3 168 333.75			
L183	78 652.47	3 169 469.95		R184	78 078.61	3 168 302.97			
L184	78 615.20	3 169 385.85		R185	78 126.83	3 168 304.35			
L185	78 525.49	3 169 200.99		R186	78 169.28	3 168 294.62			
L186	78 422.38	3 168 988.48		R187	78 134.38	3 168 170.46			
L187	78 370.99	3 168 875.09		R188	78 083.14	3 168 021.04			
L188	78 329.14	3 168 740.90		R189	78 048.11	3 167 937.98			
L189	78 230.11	3 168 382.45		R190	78 016.12	3 167 743.25			
L190	78 233.02	3 168 336.61		R191	77 978.27	3 167 594.82			
L191	78 234.90	3 168 336.37		R192	77 947.48	3 167 484.00			
L192	78 230.77	3 168 304.64		R193	77 872.44	3 167 188.87			
L193	78 224.45	3 168 305.46		R194	77 862.03	3 167 137.16			
L194	78 196.66	3 168 262.32		R195	77 854.93	3 167 085.12			
L195	77 995.28	3 167 525.44		R196	77 850.24	3 167 024.12			
L196	77 984.96	3 167 469.97		R197	77 850.05	3 166 949.41			
L197	77 915.15	3 167 226.83		R198	77 904.00	3 166 204.80			
L198	77 882.49	3 166 975.91		R199	77 892.14	3 166 161.07			
L199	77 882.30	3 166 929.41		R200	77 890.65	3 166 151.19			
Vel Sheet					14	Van of	15	P1254/25	

This gazette is also available free online at www.gpwonline.co.za