

---

**GOVERNMENT NOTICES • GOEWERMENTSKENNISGEWINGS**

---

**DEPARTMENT OF TRANSPORT**

NO. 6648

19 September 2025

**THE SOUTH AFRICAN NATIONAL ROADS  
AGENCY SOC LIMITED**Registration No: 1998/009584/30

---

**DECLARATION AND AMENDMENT OF NATIONAL ROAD N6 SECTION 10**

- i) By virtue of section 40(1)(a) of the South African National Roads Agency Limited and the National Roads Act 1998 (Act No. 7 of 1998), I hereby declare the Route Section, being the part from the intersection with Road S145 up to the intersection with the existing National Road N8 Section 10, as indicated on accompanying sheets 1 to 8 of Plan No. P1253/25, as a National Road
- ii) By virtue of section 40(1)(b) of the South African National Roads Agency Limited and the National Roads Act 1998 (Act No. 7 of 1998), I hereby amend Declaration No. 5578 of 2024 by substituting paragraph P of the Schedule, being the part of the descriptive declaration of the route from the intersection with exiting National Road N1 Section 15 up to the intersection with Road S145, with the accompanying sheets 1 to 8 of Plan No. P1253/25.

**(National Road N6 Section 10: N1 Intersection – N8 Intersection)**  
**MINISTER OF TRANSPORT**

## DEPARTEMENT VAN VERVOER

NO. 6648

19 September 2025

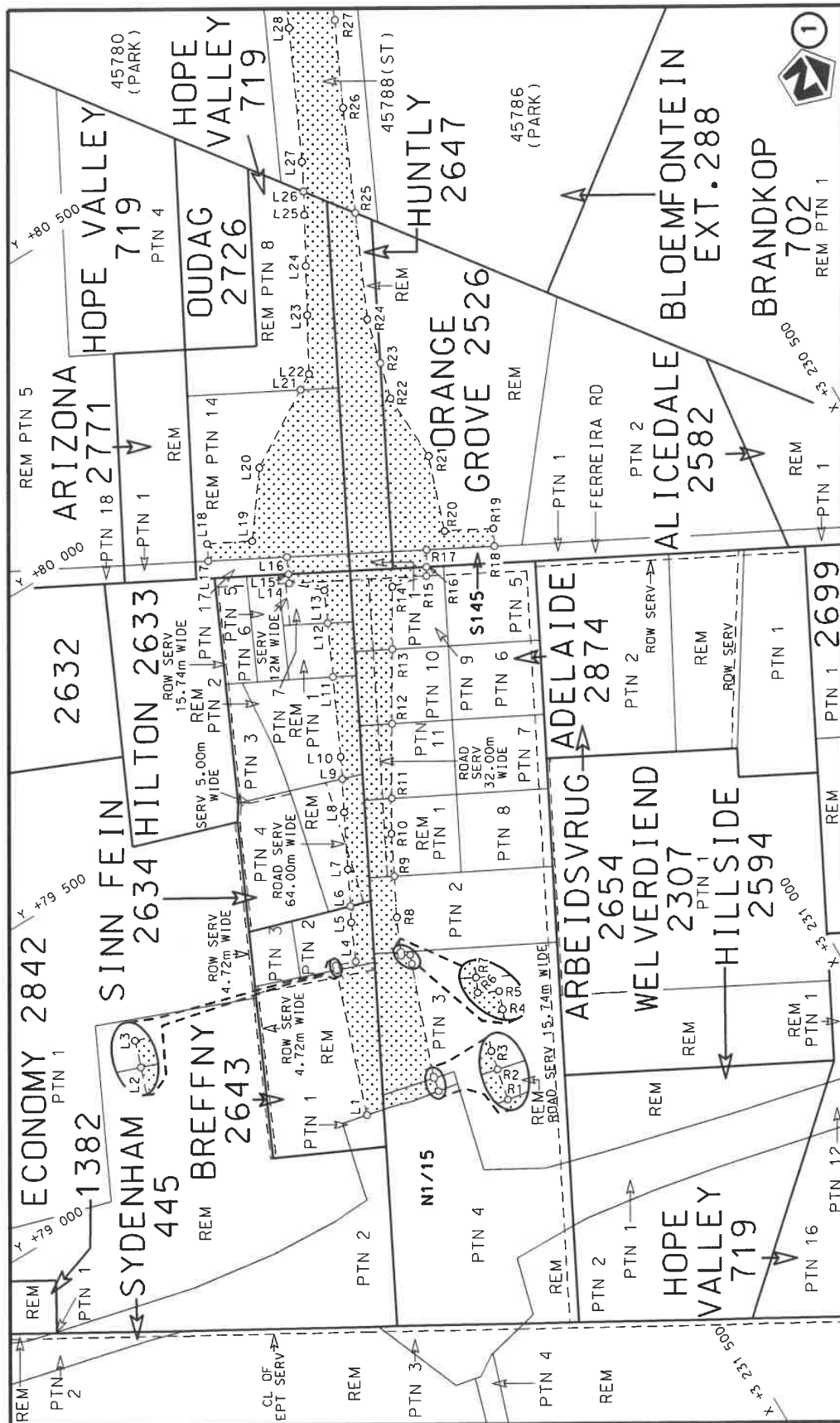
**DIE SUID-AFRIKAANSE NASIONALE  
PADAGENTSKAP MSB BEPERK**

Registrasie No: 1998/009584/30

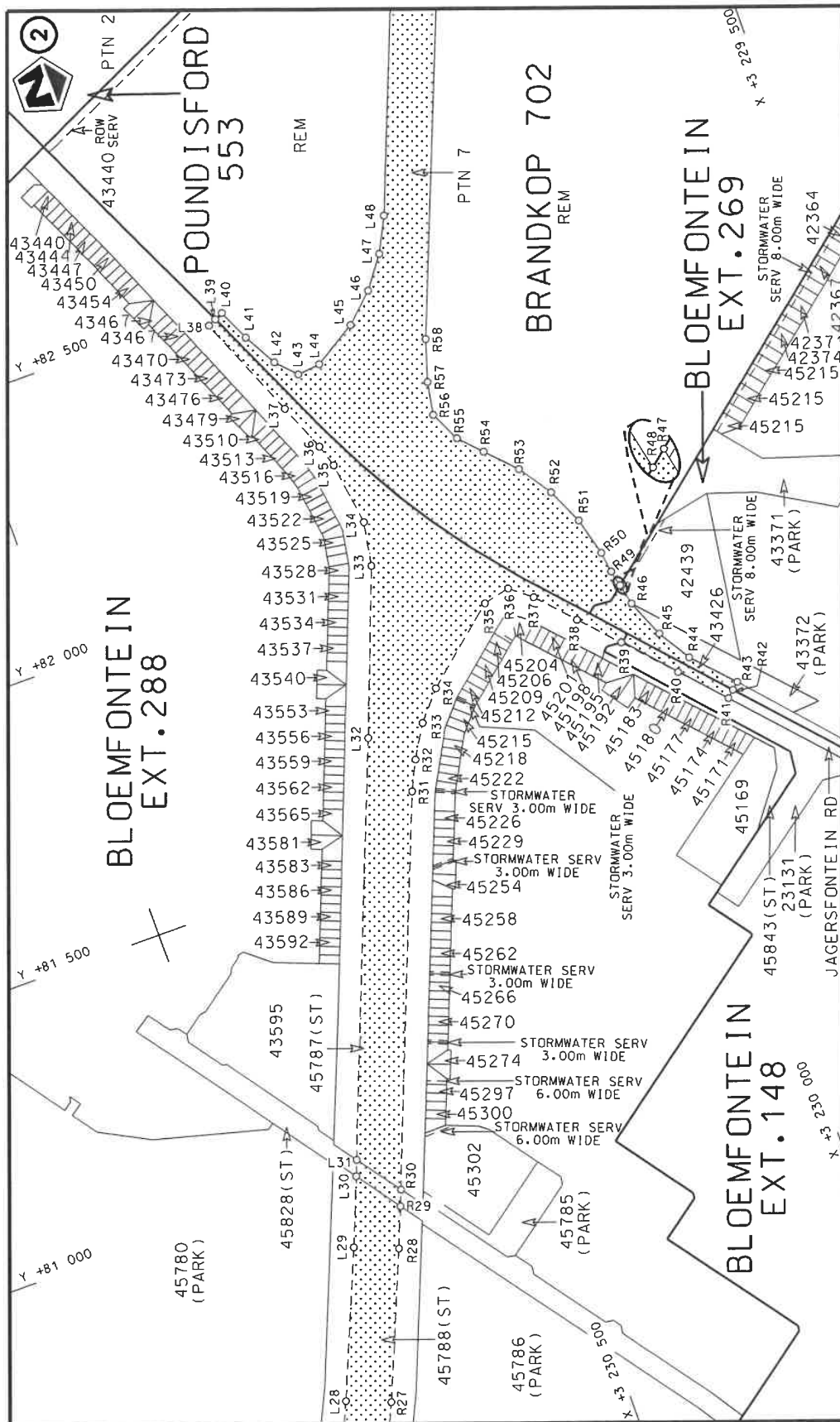
**VERKLARING EN WYSEGING VAN NASIONALE PAD N6 SEKSIE 10**

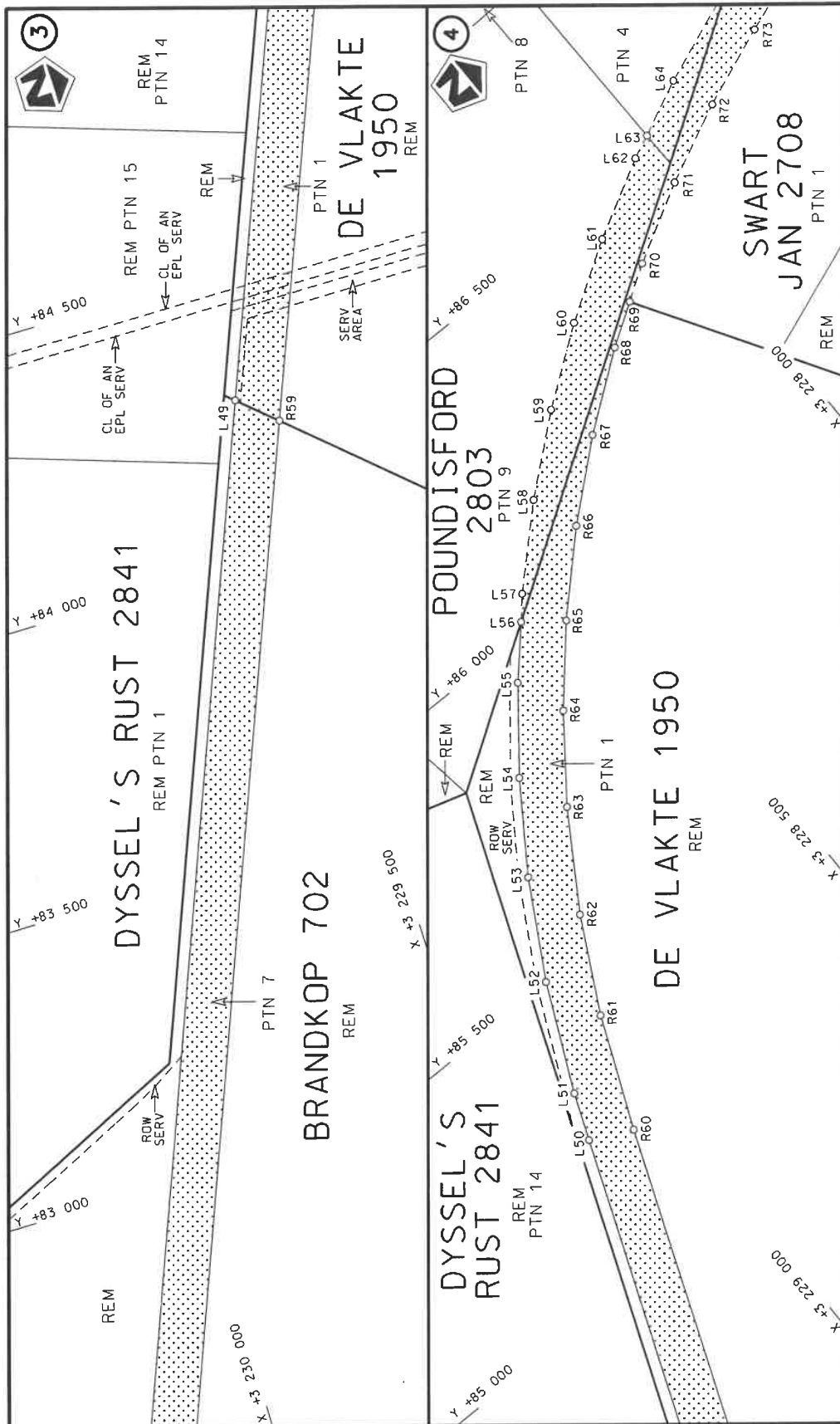
- i) Kragtens Artikel 40(1)(a) van die Suid-Afrikaanse Nasionale Padagentskap Beperk en Nasionale Paaie Wet 1998 (Wet No. 7 van 1998), verklaar ek hiermee die Roete Seksie, synde die gedeelte vanaf die interseksie met Pad S145 to by die interseksie met die bestaande Nasionale Pad N8 Seksie 10, soos aangetoon op meegaande velle 1 tot 8 van Plan No. P1253/25, as 'n Nasionale Pad.
- ii) Kragtens Artikel 40(1)(b) van die Suid-Afrikaanse Nasionale Padagentskap Beperk en Nasionale Paaie Wet 1998 (Wet No. 7 van 1998), wysig ek hiermee Verklaring No. 5578 van 2024 deur paragraaf P van die Bylaag te vervang, synde die gedeelte van die beskrywende verklaring van die roete vanaf die interseksie met bestaande Nasionale Pad N1 Seksie 15 tot by die interseksie met Pad S145, met bygaande velle 1 tot 8 van Plan No. P1253/25.


**(Nasionale Pad N6 Seksie 10: N1 Interseksie - N8 Interseksie)**  
**MINISTER VAN VERVOER**

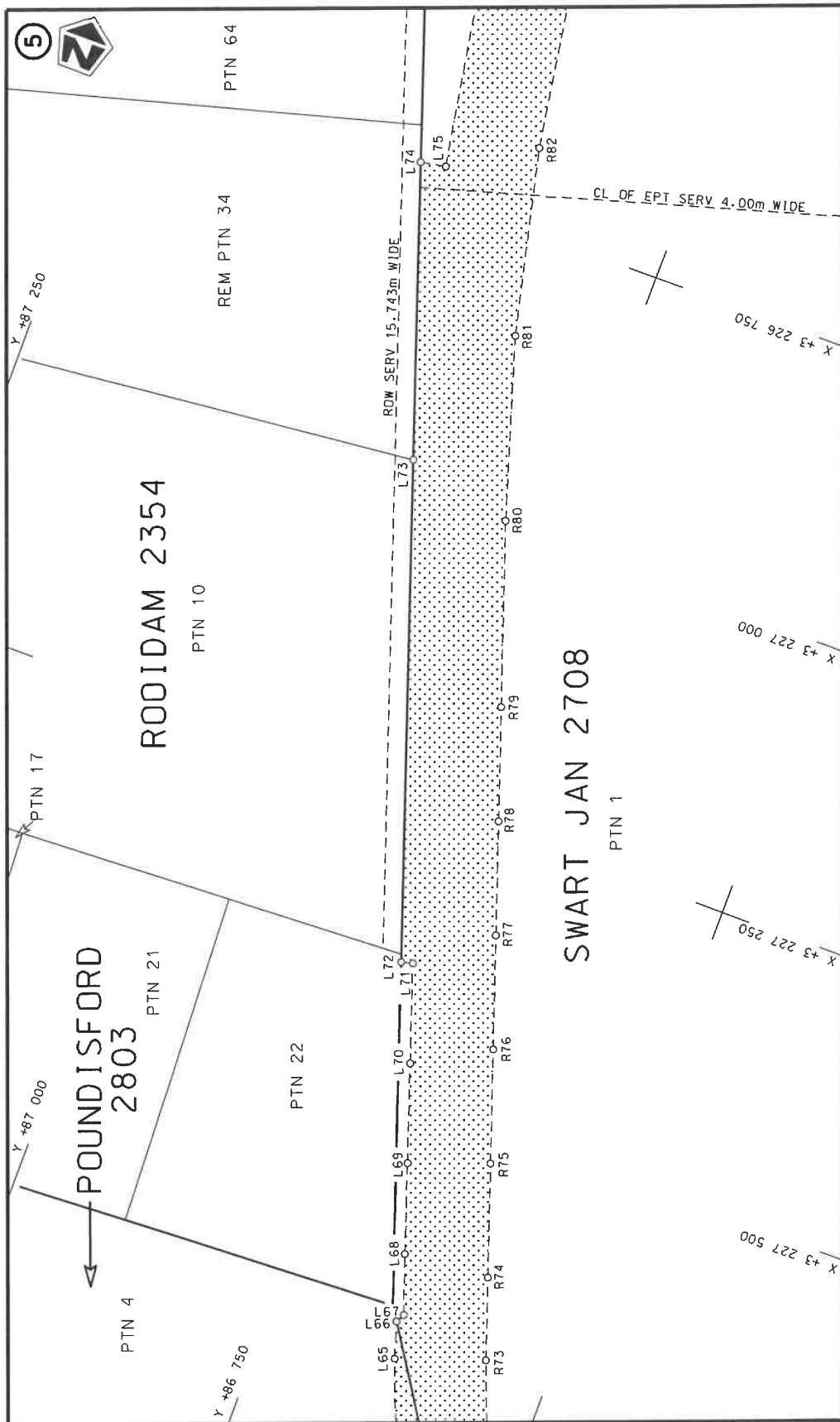



Die Suid Afrikaanse Nasionale Padagentskap MSB Bpk The South African National Roads Agency SOC Ltd	Die figuur getoon The figure shown	<div data-bbox="1284 1093 1364 1236" data-label="Image"> </div> steldie padreserwe voor van 'n gedeelte represents the road reserve of a portion van Nasionale Roete N6 of National Route	Vel Sheet 1 of 8  Plan P1253/25
---	---------------------------------------	--	--



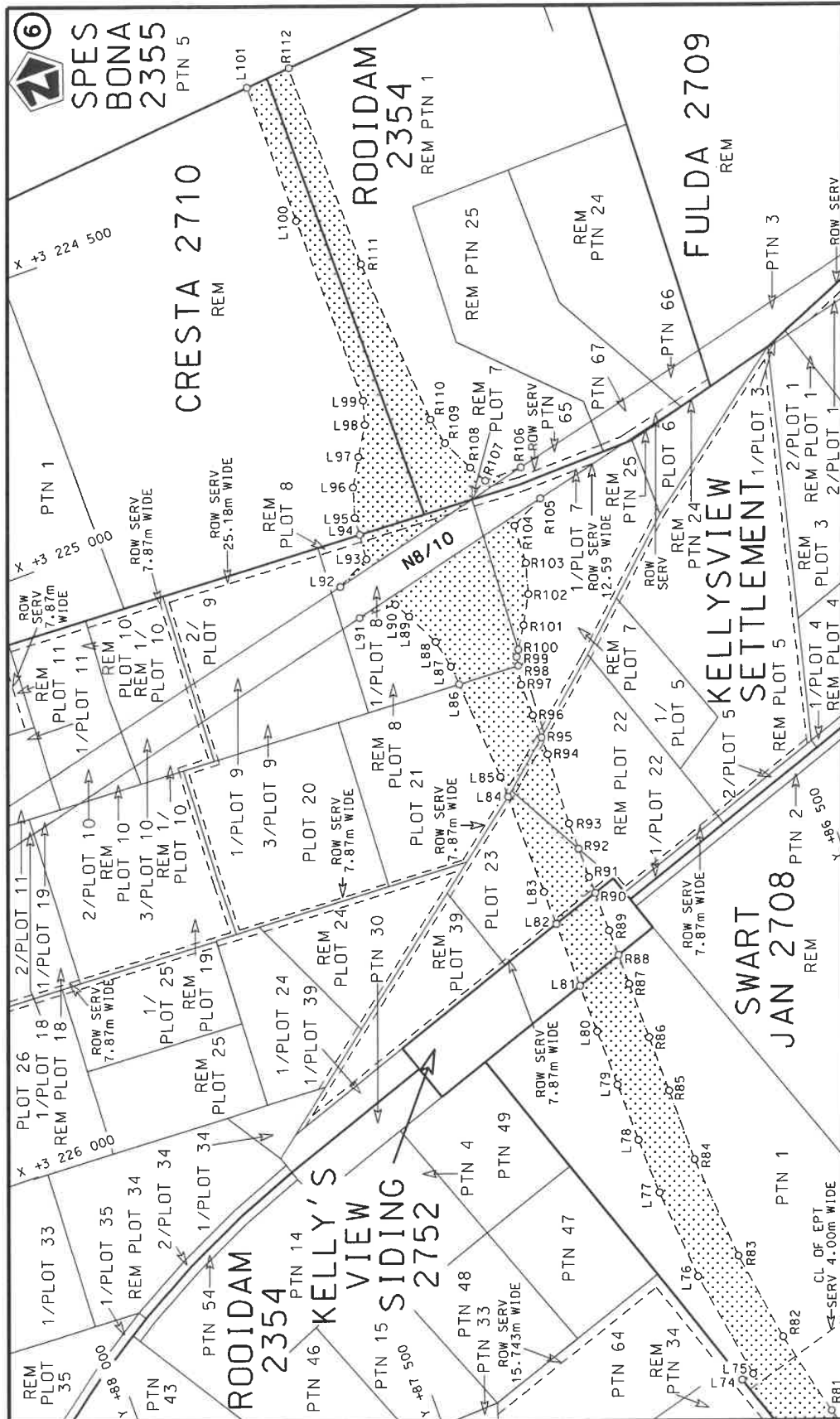


Die Suid Afrikaanse Nasionale Padagentskap WSB Bpk The South African National Roads Agency SOC Ltd	Die figuur getoon The figure shown		steldie padreserwe voor van 'n gedeelte represents the road reserve of a portion van Nasionale Roete N6 of National Route	Vel Sheet 3 of 8 Plan P1253/25
---	---------------------------------------	---	--	-----------------------------------



Die Suid Afrikaanse Nasionale Padagentskap MSB Bpk The South African National Roads Agency SOC Ltd	Die figuur getoon The figure shown	 steldie padreserwe voor van 'n gedeelte represents the road reserve of a portion van Nasionale Roete N6 of National Route	Vel Sheet 4 of 8 Plan P1253/25
---	---------------------------------------	---	--------------------------------------





PADRESERWE KOÖRDINATE / ROAD RESERVE CO-ORDINATES									
LINKERKANT/LEFT HAND SIDE					REGTERKANT/RIGHT HAND SIDE				
	Y		X	WG 27°		Y		X	
L1	78 917.05	3	231	834.35	R1	78 888.03	3	231	705.83
L2	79 162.19	3	231	748.45	R2	78 911.49	3	231	700.69
L3	79 169.91	3	231	745.74	R3	78 914.14	3	231	700.11
L4	79 157.87	3	231	712.35	R4	79 103.36	3	231	630.96
L5	79 220.48	3	231	683.36	R5	79 118.52	3	231	625.42
L6	79 245.56	3	231	670.38	R6	79 125.61	3	231	639.08
L7	79 303.32	3	231	640.49	R7	79 131.32	3	231	636.44
L8	79 392.13	3	231	594.53	R8	79 186.92	3	231	610.74
L9	79 443.94	3	231	567.71	R9	79 250.76	3	231	577.70
L10	79 478.55	3	231	549.79	R10	79 317.22	3	231	543.30
L11	79 605.36	3	231	489.40	R11	79 369.99	3	231	511.32
L12	79 690.75	3	231	448.73	R12	79 481.59	3	231	443.67
L13	79 743.14	3	231	423.78	R13	79 593.18	3	231	376.03
L14	79 785.10	3	231	470.25	R14	79 687.01	3	231	319.16
L15	79 799.51	3	231	463.24	R15	79 671.86	3	231	259.21
L16	79 826.67	3	231	450.04	R16	79 685.61	3	231	250.89
L17	79 892.15	3	231	571.63	R17	79 711.26	3	231	235.35
L18	79 919.16	3	231	557.14	R18	79 654.73	3	231	130.03
L19	79 881.97	3	231	486.92	R19	79 682.30	3	231	115.27
L20	79 985.73	3	231	410.08	R20	79 723.22	3	231	191.08
L21	80 065.21	3	231	278.80	R21	79 850.06	3	231	147.32
L22	80 081.45	3	231	251.97	R22	79 971.04	3	231	152.58
L23	80 171.32	3	231	201.53	R23	80 033.28	3	231	136.34
L24	80 246.29	3	231	159.45	R24	80 111.02	3	231	116.05
L25	80 324.36	3	231	115.63	R25	80 281.36	3	231	038.68
L26	80 360.02	3	231	096.41	R26	80 449.91	3	230	962.12
L27	80 406.12	3	231	071.57	R27	80 589.11	3	230	896.08
L28	80 618.51	3	230	970.57	R28	80 838.05	3	230	791.35
L29	80 867.42	3	230	865.76	R29	80 906.16	3	230	764.47
L30	80 982.87	3	230	820.20	R30	80 933.31	3	230	753.76
L31	81 009.41	3	230	809.73	R31	81 583.61	3	230	497.14
L32	81 698.26	3	230	537.90	R32	81 634.12	3	230	472.27
L33	81 980.14	3	230	429.93	R33	81 689.93	3	230	438.94
L34	82 056.59	3	230	416.51	R34	81 739.20	3	230	396.54
L35	82 168.54	3	230	432.43	R35	81 849.60	3	230	265.01
L36	82 207.84	3	230	444.47	R36	81 859.88	3	230	218.09
L37	82 290.95	3	230	479.12	R37	81 830.01	3	230	181.26
L38	82 473.58	3	230	555.71	R38	81 766.84	3	230	123.45
L39	82 480.07	3	230	541.64	R39	81 702.34	3	230	064.42
L40	82 486.66	3	230	527.33	R40	81 619.30	3	229	988.41
L41	82 431.76	3	230	502.15	R41	81 545.67	3	229	920.74
L42	82 373.90	3	230	469.70	R42	81 556.49	3	229	908.35
L43	82 339.27	3	230	437.32	R43	81 566.90	3	229	896.44
L44	82 343.54	3	230	396.87	R44	81 636.62	3	229	961.42
L45	82 389.03	3	230	322.05	R45	81 693.83	3	229	996.37
L46	82 435.05	3	230	272.72	R46	81 760.25	3	230	024.53
L47	82 489.06	3	230	232.31	R47	81 797.05	3	230	032.25
L48	82 549.35	3	230	202.04	R48	81 796.68	3	230	032.67
L49	84 297.80	3	229	512.05	R49	81 825.23	3	230	039.07
L50	85 239.41	3	229	140.48	R50	81 862.03	3	230	044.33
L51	85 319.06	3	229	108.45	R51	81 929.03	3	230	062.16
					<div> <div>Vel</div> <div>6</div> <div>Van</div> <div>8</div> <div>Sheet</div> <div>of</div> <div>P1253/25</div> </div>				



PADRESERVE KOÖRDINATE / ROAD RESERVE CO-ORDINATES																			
LINKERKANT/LEFT HAND SIDE					REGTERKANT/RIGHT HAND SIDE														
	Y		X	WG 27°		Y		X											
L52	85 501.43	3	229	023.65	R52	81 992.17	3	230	090.91										
L53	85 662.73	3	228	931.53	R53	82 049.65	3	230	129.79										
L54	85 807.21	3	228	833.55	R54	82 099.85	3	230	177.71										
L55	85 937.46	3	228	730.63	R55	82 138.12	3	230	213.81										
L56	86 016.14	3	228	658.69	R56	82 190.88	3	230	238.94										
L57	86 052.72	3	228	625.93	R57	82 248.43	3	230	228.78										
L58	86 166.98	3	228	506.85	R58	82 320.43	3	230	206.37										
L59	86 269.67	3	228	383.76	R59	84 241.00	3	229	448.46										
L60	86 361.65	3	228	256.94	R60	85 204.02	3	229	068.44										
L61	86 443.57	3	228	126.61	R61	85 395.80	3	228	986.91										
L62	86 515.86	3	227	992.94	R62	85 554.94	3	228	903.04										
L63	86 534.34	3	227	952.75	R63	85 714.69	3	228	801.37										
L64	86 578.82	3	227	856.03	R64	85 849.25	3	228	699.95										
L65	86 632.64	3	227	715.93	R65	85 967.79	3	228	596.38										
L66	86 642.69	3	227	685.45	R66	86 084.87	3	228	478.29										
L67	86 638.73	3	227	678.09	R67	86 189.73	3	228	355.95										
L68	86 656.46	3	227	626.99	R68	86 283.38	3	228	229.71										
L69	86 682.16	3	227	551.52	R69	86 328.71	3	228	158.92										
L70	86 710.78	3	227	468.81	R70	86 366.52	3	228	099.81										
L71	86 739.31	3	227	386.35	R71	86 439.64	3	227	966.43										
L72	86 749.21	3	227	388.93	R72	86 503.10	3	227	829.69										
L73	86 893.84	3	226	973.08	R73	86 557.08	3	227	689.65										
L74	86 979.49	3	226	726.85	R74	86 580.93	3	227	621.08										
L75	86 957.28	3	226	722.74	R75	86 613.78	3	227	526.63										
L76	86 991.39	3	226	529.26	R76	86 646.63	3	227	432.18										
L77	87 006.12	3	226	367.83	R77	86 679.48	3	227	337.73										
L78	87 009.60	3	226	268.28	R78	86 712.33	3	227	243.28										
L79	87 011.57	3	226	164.82	R79	86 745.18	3	227	148.83										
L80	87 013.48	3	226	064.66	R80	86 798.76	3	226	994.80										
L81	87 015.09	3	225	979.96	R81	86 847.59	3	226	840.24										
L82	87 017.29	3	225	864.05	R82	86 885.88	3	226	679.23										
L83	87 018.44	3	225	803.52	R83	86 912.02	3	226	519.24										
L84	87 021.83	3	225	625.57	R84	86 928.69	3	226	333.93										
L85	87 022.54	3	225	587.89	R85	86 930.46	3	226	205.21										
L86	87 036.40	3	225	411.06	R86	86 931.83	3	226	105.22										
L87	87 039.09	3	225	376.68	R87	86 933.21	3	226	005.23										
L88	87 049.69	3	225	326.92	R88	86 933.94	3	225	951.74										
L89	87 078.58	3	225	269.16	R89	86 934.58	3	225	905.24										
L90	87 094.04	3	225	241.18	R90	86 935.54	3	225	835.61										
L91	87 161.64	3	225	242.23	R91	86 935.95	3	225	805.25										
L92	87 175.55	3	225	179.54	R92	86 936.67	3	225	752.79										
L93	87 115.32	3	225	149.55	R93	86 937.33	3	225	705.26										
L94	87 112.63	3	225	105.10	R94	86 931.36	3	225	578.73										
L95	87 110.77	3	225	074.35	R95	86 931.95	3	225	547.34										
L96	87 095.65	3	225	023.20	R96	86 932.73	3	225	505.74										
L97	87 068.85	3	224	975.94	R97	86 933.80	3	225	448.32										
L98	87 039.26	3	224	926.79	R98	86 928.20	3	225	415.58										
L99	87 028.10	3	224	886.02	R99	86 925.53	3	225	399.92										
L100	87 033.20	3	224	549.84	R100	86 918.53	3	225	388.85										
L101	87 036.62	3	224	300.91	R101	86 894.95	3	225	351.54										
					R102	86 868.95	3	225	303.31										
					<table><tr><td>Vel</td><td>7</td><td>Van</td><td>8</td><td>P1253/25</td></tr><tr><td>Sheet</td><td></td><td>of</td><td></td><td></td></tr></table>					Vel	7	Van	8	P1253/25	Sheet		of		
Vel	7	Van	8	P1253/25															
Sheet		of																	

This gazette is also available free online at [www.gpwonline.co.za](http://www.gpwonline.co.za)