
GOVERNMENT NOTICES • GOEWERMENTSKENNISGEWINGS

DEPARTMENT OF TRANSPORT

NO. 6646

19 September 2025

THE SOUTH AFRICAN NATIONAL ROADS AGENCY SOC LIMITED

Registration No: 1998/009584/30

DECLARATION OF NATIONAL ROAD N2 SECTION 18X

By virtue of section 40(1)(a) of the South African National Roads Agency Limited and the National Roads Act 1998 (Act No. 7 of 1998), I hereby declare the Route Section as indicated on subjoining sheets 1 to 2 of Plan No. P1252/25, as National Road

(National Road N2 Section 18X: Idutywa Ring Road)



MINISTER OF TRANSPORT

DEPARTEMENT VAN VERVOER

NO. 6646

19 September 2025

**DIE SUID-AFRIKAANSE NASIONALE
PADAGENTSKAP MSB BEPERK**

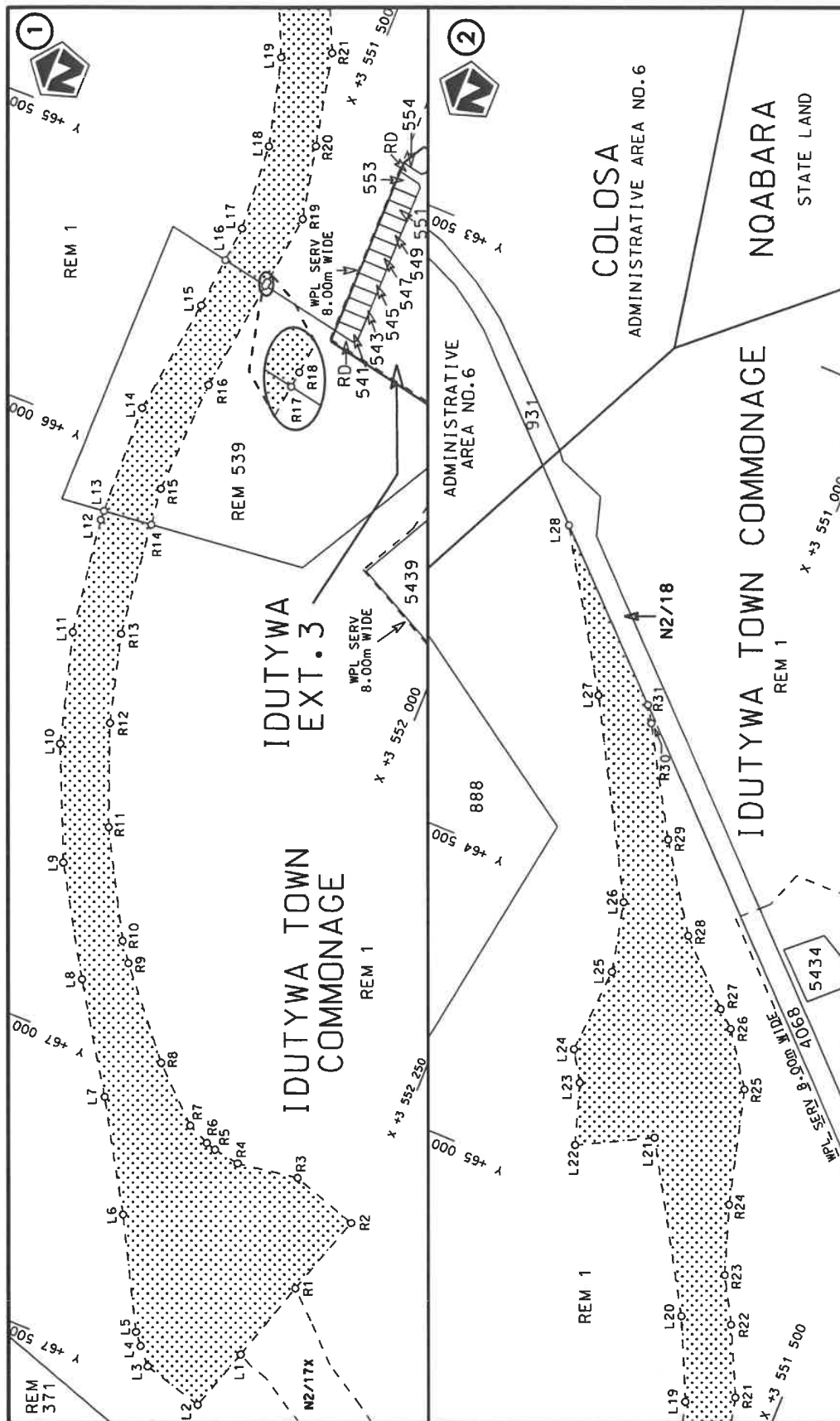
Registrasie No: 1998/009584/30


VERKLARING VAN NASIONALE PAD N2 SEKSIE 18X

Kragtens Artikel 40(1)(a) van die Wet op die Suid-Afrikaanse Nasionale Padagentskap Beperk en op Nasionale Paaie Wet 1998 (Wet No. 7 van 1998), verklaar ek hiermee die Roete Seksie soos aangetoon op meegaande velle 1 tot 2 van Plan No. P1252/25, as Nasionale Pad

(Nasionale Pad N2 Seksie 18X: Idutywa Ringpad)


MINISTER VAN VERVOER



Die Suid Afrikaanse Nasionale Padagentskap MSB Bpk The South African National Roads Agency SOC Ltd	Die figuur getoon The figure shown	 steldie padreserwe voor van 'n gedeelte represents the road reserve of a portion van Nasionale Roete of National Route	Vel Sheet 1 of 2 Plan P1252/25
---	---------------------------------------	--	---

PADRESERWE KOÖRDINATE / ROAD RESERVE CO-ORDINATES						
LINKERKANT/LEFT HAND SIDE				REGTERKANT/RIGHT HAND SIDE		
	Y	X	WG 29°		Y	X
L1	67 398.88	3 552 140.03		R1	67 255.42	3 552 184.04
L2	67 509.08	3 552 104.98		R2	67 112.33	3 552 231.10
L3	67 479.63	3 551 998.78		R3	67 074.45	3 552 114.31
L4	67 450.96	3 551 973.76		R4	67 090.50	3 552 008.59
L5	67 431.12	3 551 957.04		R5	67 083.25	3 551 963.37
L6	67 249.18	3 551 857.65		R6	67 077.45	3 551 945.72
L7	67 070.35	3 551 749.59		R7	67 060.32	3 551 907.65
L8	66 894.54	3 551 634.45		R8	66 977.53	3 551 819.07
L9	66 717.67	3 551 526.66		R9	66 837.43	3 551 699.99
L10	66 527.08	3 551 443.02		R10	66 805.13	3 551 675.55
L11	66 337.88	3 551 389.50		R11	66 630.13	3 551 577.46
L12	66 138.80	3 551 359.94		R12	66 460.35	3 551 510.56
L13	66 122.10	3 551 359.45		R13	66 308.15	3 551 469.40
L14	65 928.35	3 551 353.80		R14	66 112.48	3 551 445.65
L15	65 723.24	3 551 381.11		R15	66 046.85	3 551 437.69
L16	65 635.04	3 551 389.29		R16	65 847.01	3 551 445.73
L17	65 571.83	3 551 395.15		R17	65 650.25	3 551 470.67
L18	65 421.28	3 551 383.92		R18	65 643.32	3 551 471.55
L19	65 269.33	3 551 344.51		R19	65 516.56	3 551 486.73
L20	65 132.75	3 551 281.42		R20	65 389.93	3 551 459.66
L21	64 860.65	3 551 119.44		R21	65 228.87	3 551 423.58
L22	64 925.32	3 550 996.48		R22	65 113.41	3 551 368.28
L23	64 820.92	3 550 962.61		R23	65 037.01	3 551 324.61
L24	64 770.25	3 550 930.99		R24	64 919.84	3 551 285.11
L25	64 619.47	3 550 940.66		R25	64 722.10	3 551 233.83
L26	64 498.61	3 550 913.60		R26	64 633.21	3 551 171.06
L27	64 179.90	3 550 735.48		R27	64 607.55	3 551 141.18
L28	63 925.06	3 550 575.00		R28	64 510.60	3 551 039.65
				R29	64 367.66	3 550 943.37
				R30	64 191.25	3 550 839.09
				R31	64 163.70	3 550 821.55
				Vel Sheet 2 Van of 2 P1252/25		