

---

GOVERNMENT NOTICES • GOEWERMENTSKENNISGEWINGS

---

DEPARTMENT OF TRANSPORT

NO. 6645

19 September 2025

**THE SOUTH AFRICAN NATIONAL ROADS  
AGENCY SOC LIMITED**

Registration No: 1998/009584/30

---

**DECLARATION OF NATIONAL ROAD N2 SECTION 17X**

By virtue of section 40(1)(a) of the South African National Roads Agency Limited and the National Roads Act 1998 (Act No. 7 of 1998), I hereby declare the Route Section as indicated on subjoining sheets 1 to 9 of Plan No. P1250/25, as National Road

**(National Road N2 Section 17X: Mcubakazi Ring Road)**

  
**MINISTER OF TRANSPORT**

**DEPARTEMENT VAN VERVOER**

**NO. 6645**

**19 September 2025**

**DIE SUID-AFRIKAANSE NASIONALE  
PADAGENTSKAP MSB BEPERK**

**Registrasie No: 1998/009584/30**

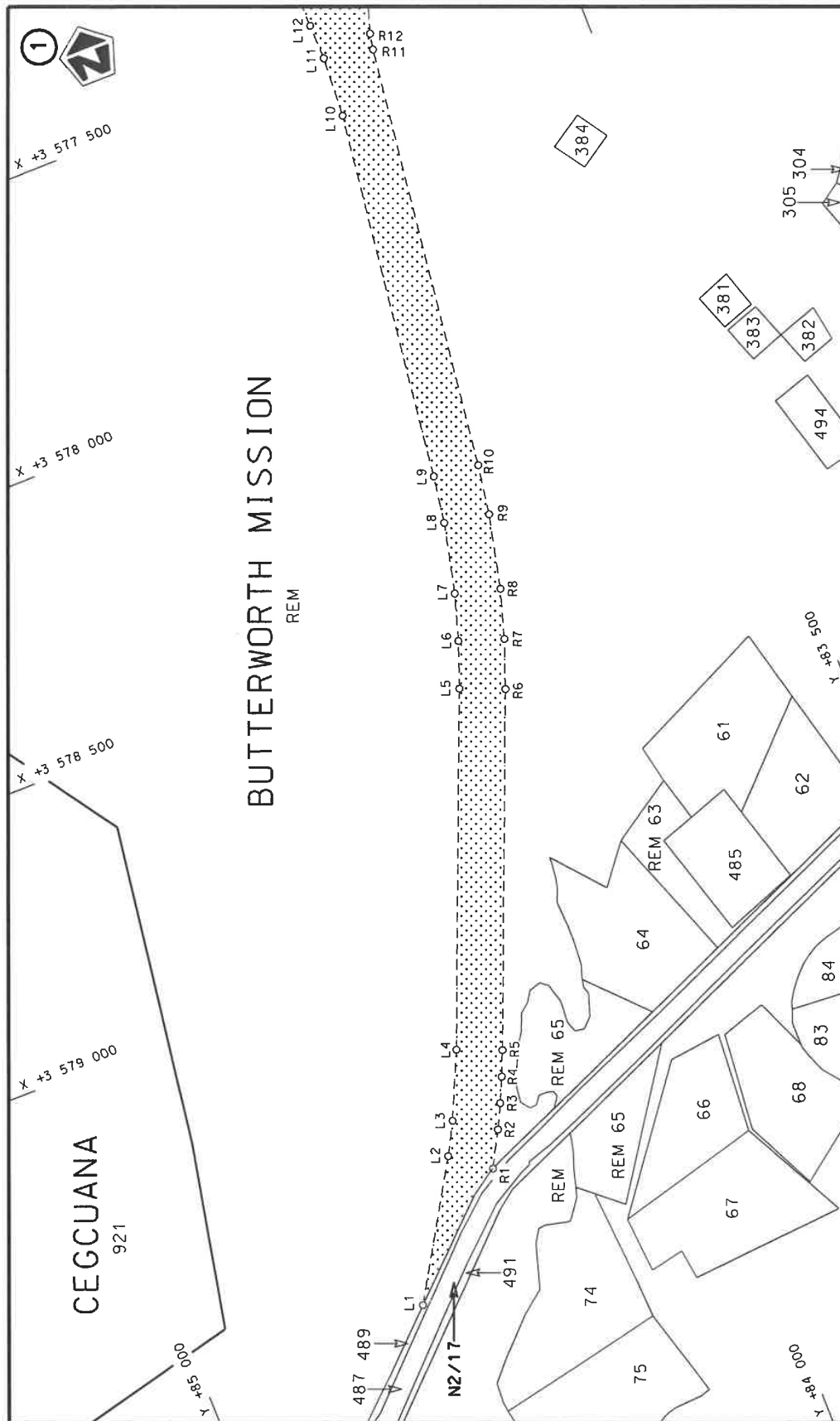
---

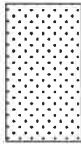
**VERKLARING VAN NASIONALE PAD N2 SEKSIE 17X**

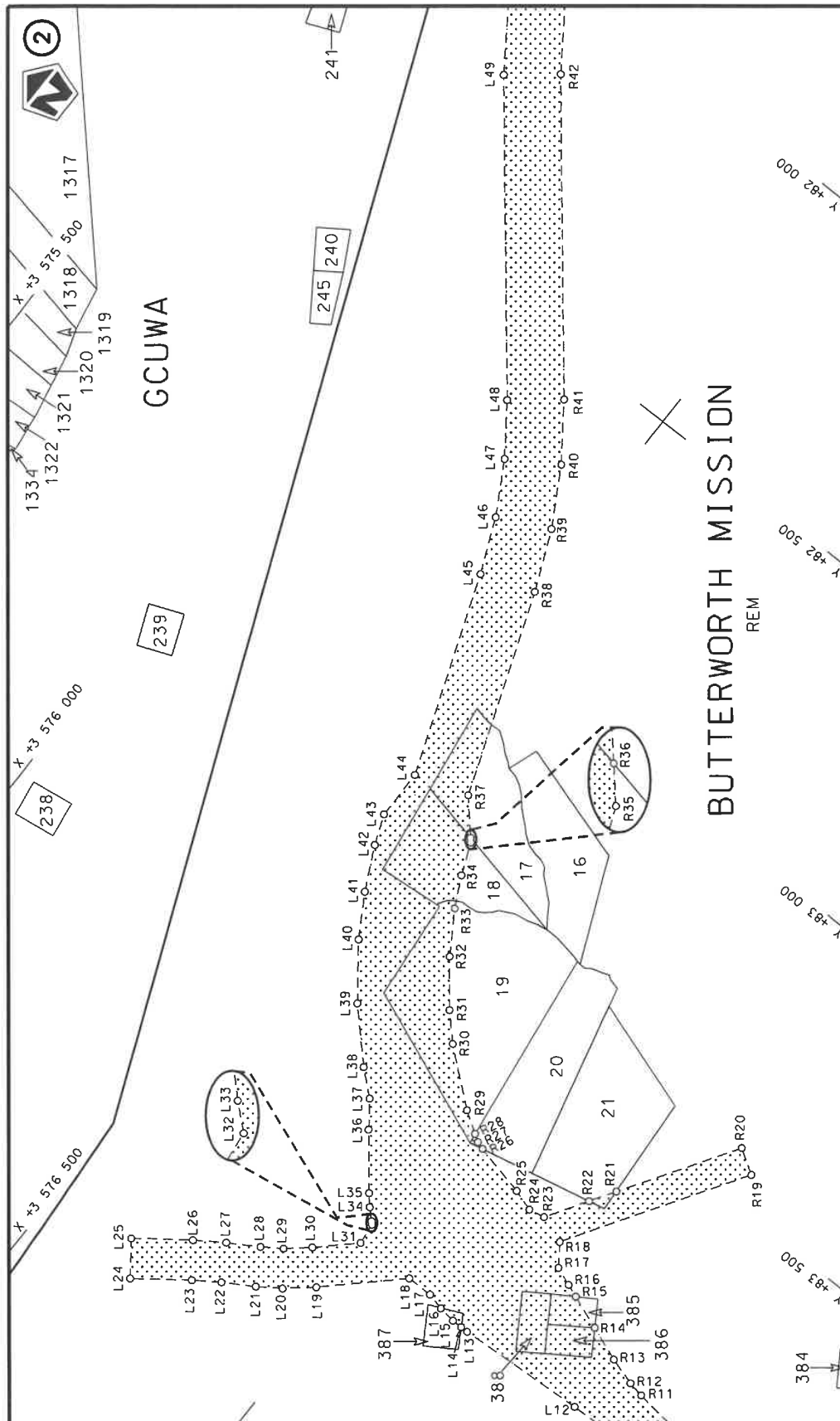
Kragtens Artikel 40(1)(a) van die Wet op die Suid-Afrikaanse Nasionale Padagentskap Beperk en op Nasionale Paaie Wet 1998 (Wet No. 7 van 1998), verklaar ek hiermee die Roete Seksie soos aangetoon op meegaande velle 1 tot 9 van Plan No. P1250/25, as Nasionale Pad

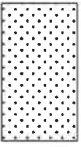
**(Nasionale Pad N2 Seksie 17X: Mcubakazi Ringpad)**

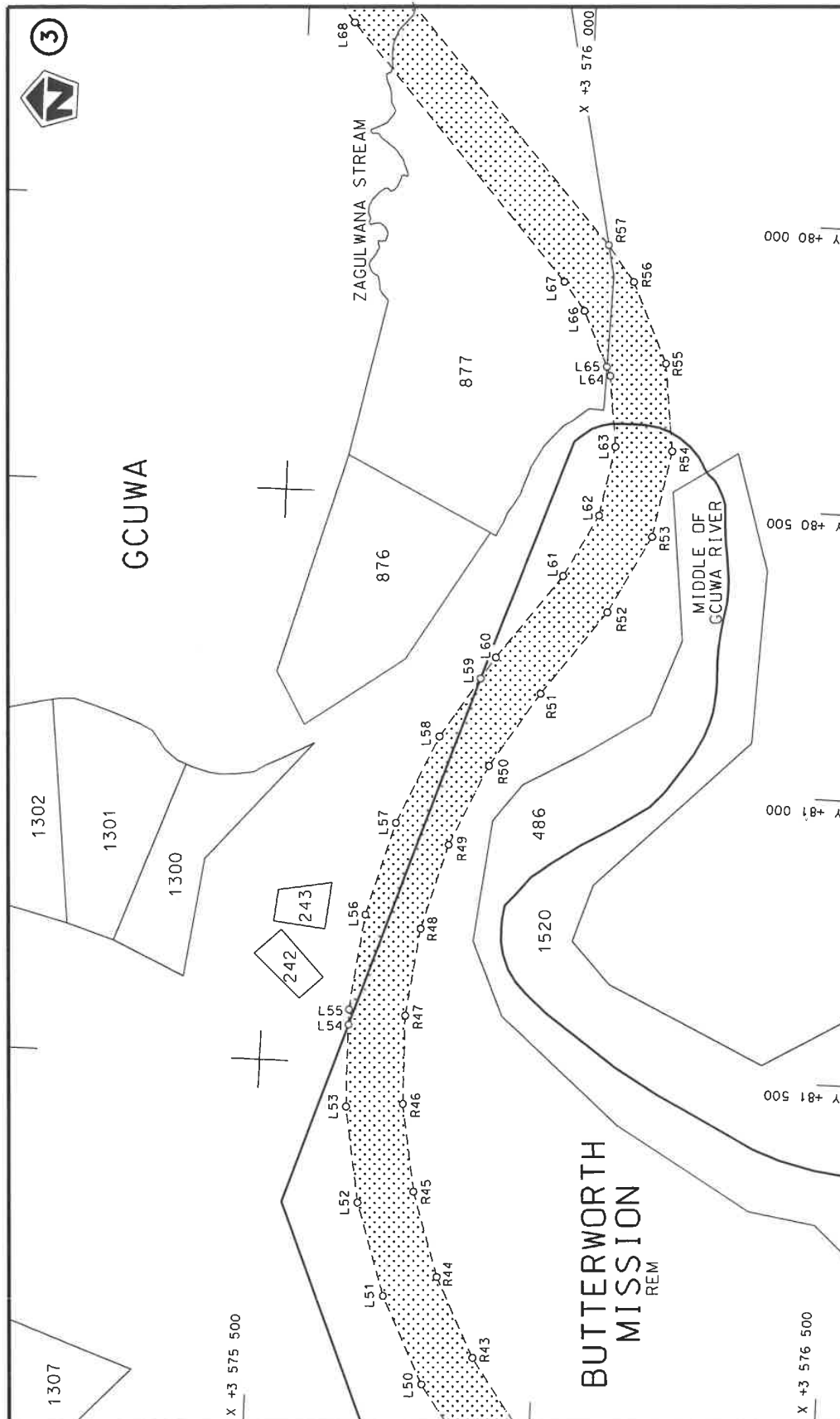
  
**MINISTER VAN VERVOER**

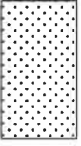


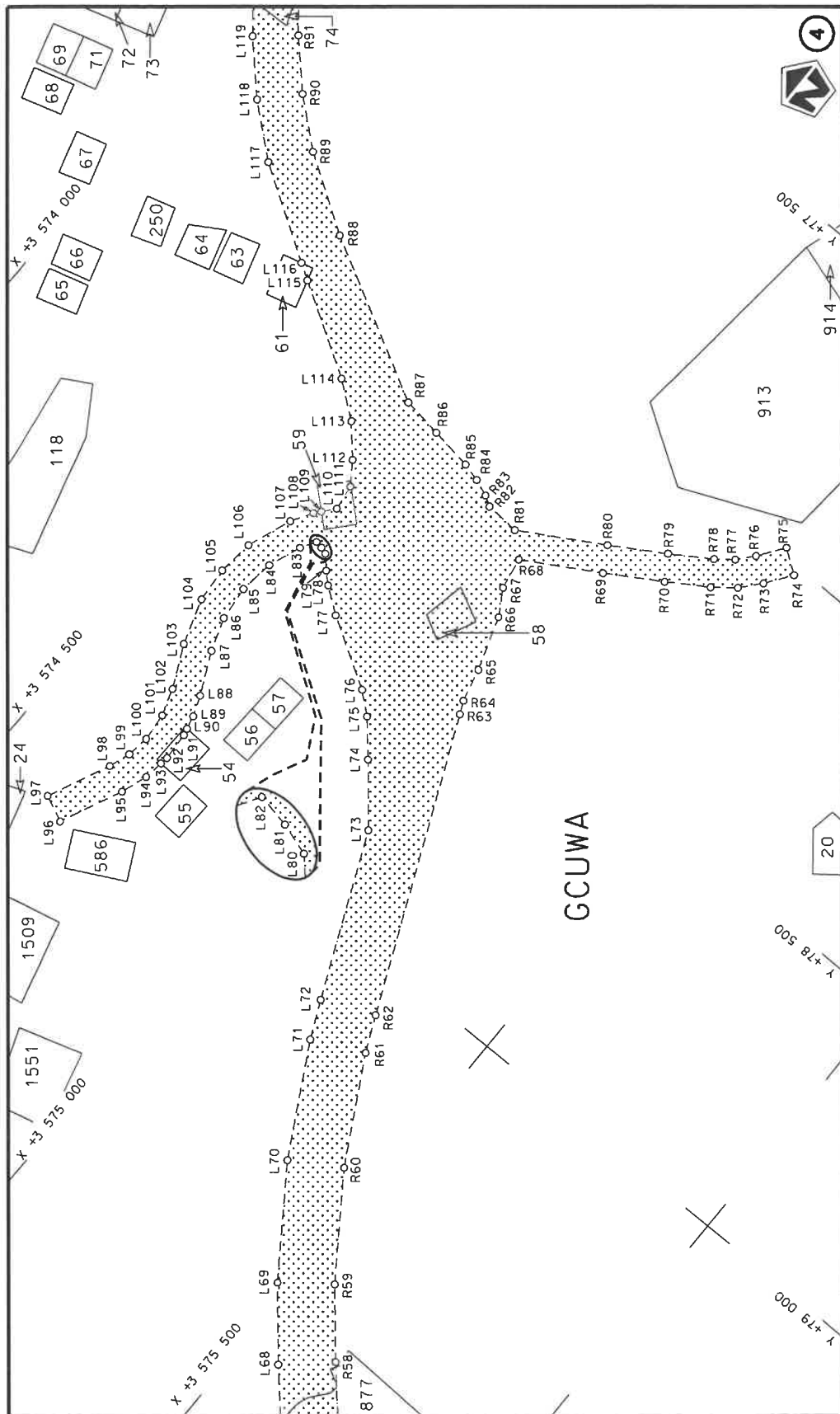
Die Suid Afrikaanse Nasionale Padagertskop MSB Bpk The South African National Roads Agency SOC Ltd	Die figuur getoon The figure shown		stel die padreserwe voor van 'n gedeelte represents the road reserve of a portion van Nasionale Roete N2 of National Route	Vel Sheet	1 of	9
			17X	Plan	P1250/25	

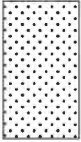


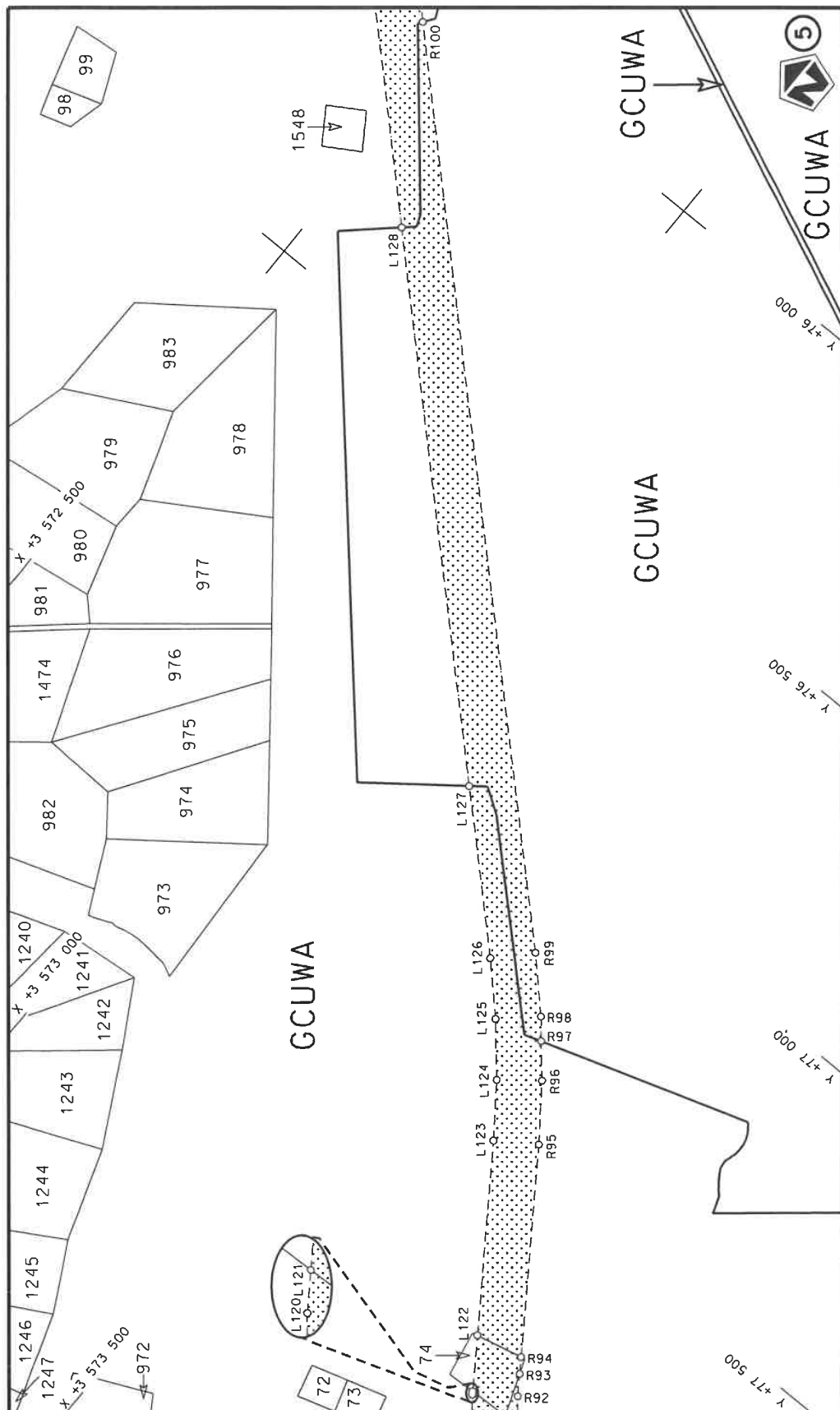
Die Suid Afrikaanse Nasionale Padogentskap MSB Bpk The South African National Roads Agency SOC Ltd	Die figuur getoon The figure shown		steeldie padreserwe voor van 'n gedeelte represents the road reserve of a portion van Nasionale Roete N2 of National Route	Vel Sheet 2 of 9 Plan P1250/25
---	---------------------------------------	---	---	--------------------------------------




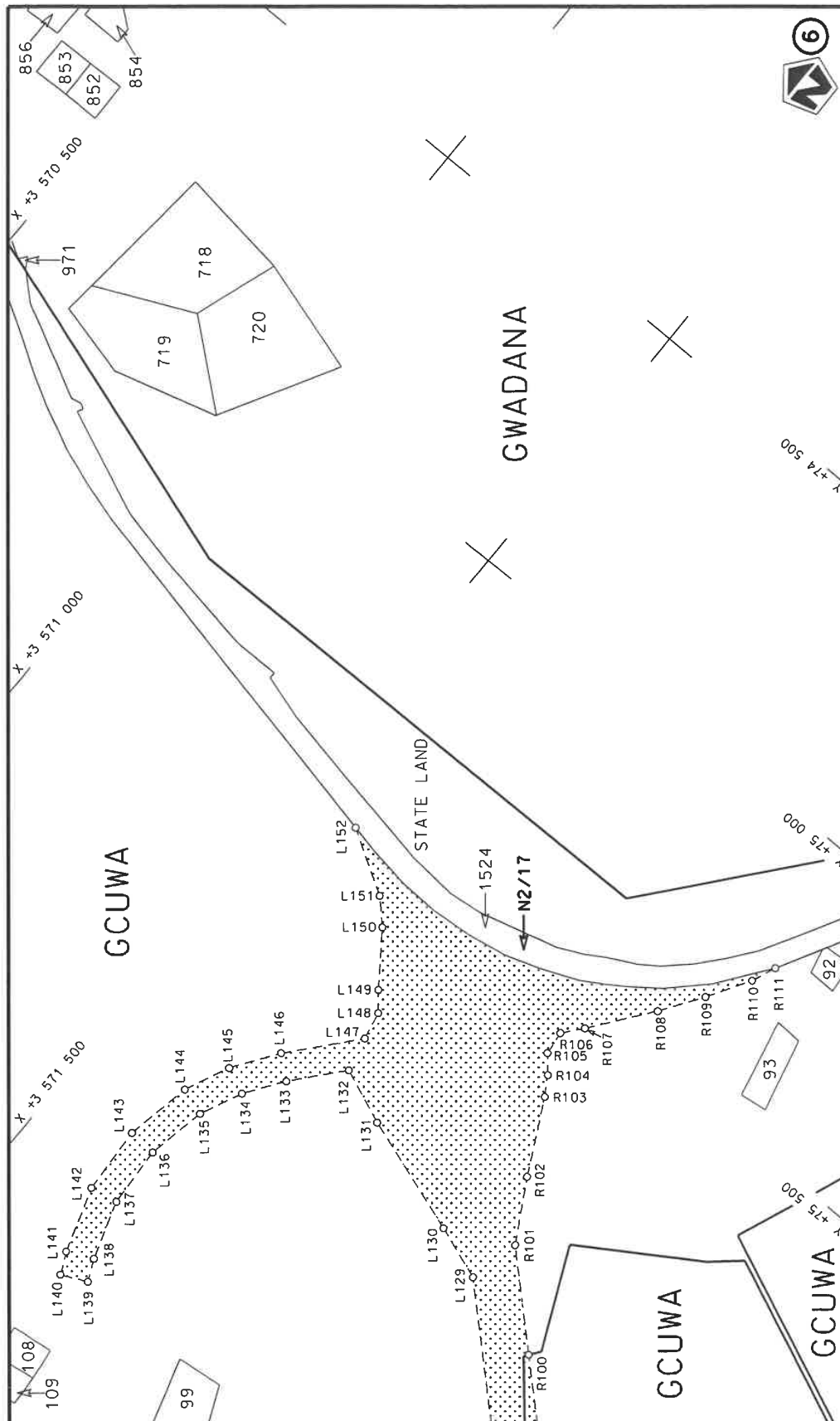
Die Suid Afrikaanse Nasionale Padagentskap MSB Bpk The South African National Roads Agency SOC Ltd	Die figuur getoon The figure shown		stel die padreserwe voor van 'n gedeelte represents the road reserve of a portion van Nasionale Roete N2 of National Route	Vel Sheet	3 of	9
				Plan	P1250/25	




Die Suid Afrikaanse Nasionale Padagentskap MSB Bpk The South African National Roads Agency SOC Ltd	Die figuur getoon The figure shown		steldie padreserwe voor van 'n gedeelte represents the road reserve of a portion of Nasionale Roete of National Route	Vel Sheet	van 4 of	9
			17X Seksie Section	Plan	P1250/25	



Die Suid Afrikaanse Nasionale Padagentskap MSB Bpk	Die figuur getoon		steldie padreserwe voor van 'n gedeelte represents the road reserve of a portion van Nasionale Roete N2 of National Route	Vel Sheet 5 of 9
The South African National Roads Agency SOC Ltd	The figure shown			17X



Die Suid Afrikaanse Nasionale Podagentskap MSB Bpk		steldie padreserwe voor van 'n gedeelte represents the road reserve of a portion van Nasionale Roete N2 of National Route	Vel	6	van	9
The South African National Roads Agency SOC Ltd			17X	Plan	P1250/25	



PADRESERVE KOÖRDINATE / ROAD RESERVE CO-ORDINATES																			
LINKERKANT/LEFT HAND SIDE					REGTERKANT/RIGHT HAND SIDE														
	Y		X	WG 29°		Y		X											
L1	84 592.66	3	579	599.01	R1	84 391.17	3	579	421.69										
L2	84 455.04	3	579	372.37	R2	84 357.34	3	579	360.68										
L3	84 425.07	3	579	317.53	R3	84 336.44	3	579	319.13										
L4	84 372.79	3	579	204.01	R4	84 316.88	3	579	276.93										
L5	84 134.62	3	578	617.78	R5	84 298.68	3	579	234.13										
L6	84 105.45	3	578	539.65	R6	84 060.50	3	578	647.89										
L7	84 080.80	3	578	459.99	R7	84 029.73	3	578	565.48										
L8	84 052.46	3	578	338.18	R8	84 003.73	3	578	481.45										
L9	84 039.41	3	578	255.82	R9	83 973.83	3	578	352.96										
L10	83 956.04	3	577	610.65	R10	83 960.07	3	578	266.07										
L11	83 950.11	3	577	505.08	R11	83 864.02	3	577	522.72										
L12	83 951.48	3	577	443.64	R12	83 858.69	3	577	495.06										
L13	83 964.64	3	577	214.15	R13	83 843.89	3	577	446.44										
L14	83 964.59	3	577	200.90	R14	83 820.91	3	577	386.07										
L15	83 964.52	3	577	182.33	R15	83 798.30	3	577	326.44										
L16	83 960.83	3	577	152.50	R16	83 789.61	3	577	303.57										
L17	83 953.52	3	577	122.64	R17	83 777.33	3	577	271.24										
L18	83 953.48	3	577	076.60	R18	83 739.98	3	577	244.90										
L19	84 065.54	3	576	959.50	R19	83 440.95	3	577	435.36										
L20	84 103.30	3	576	914.91	R20	83 414.09	3	577	393.19										
L21	84 129.43	3	576	876.13	R21	83 609.69	3	577	268.60										
L22	84 160.46	3	576	824.85	R22	83 652.37	3	577	241.42										
L23	84 189.59	3	576	781.41	R23	83 722.87	3	577	196.52										
L24	84 253.73	3	576	694.69	R24	83 728.57	3	577	168.10										
L25	84 197.46	3	576	653.06	R25	83 716.44	3	577	130.52										
L26	84 133.31	3	576	739.78	R26	83 695.86	3	577	038.02										
L27	84 100.58	3	576	788.61	R27	83 691.76	3	577	024.22										
L28	84 069.54	3	576	839.88	R28	83 683.51	3	577	011.63										
L29	84 047.22	3	576	873.01	R29	83 659.17	3	576	974.52										
L30	84 014.96	3	576	911.11	R30	83 583.23	3	576	883.21										
L31	83 956.96	3	576	971.72	R31	83 540.32	3	576	842.10										
L32	83 919.49	3	576	967.69	R32	83 466.18	3	576	784.36										
L33	83 915.39	3	576	963.07	R33	83 394.76	3	576	739.74										
L34	83 898.04	3	576	945.46	R34	83 341.57	3	576	713.26										
L35	83 879.34	3	576	929.32	R35	83 286.52	3	576	690.86										
L36	83 792.25	3	576	860.07	R36	83 280.43	3	576	685.53										
L37	83 748.29	3	576	828.05	R37	83 224.03	3	576	636.16										
L38	83 711.37	3	576	785.92	R38	82 872.22	3	576	507.98										
L39	83 630.40	3	576	708.56	R39	82 767.53	3	576	463.21										
L40	83 540.89	3	576	641.27	R40	82 668.35	3	576	407.27										
L41	83 468.30	3	576	598.09	R41	82 575.88	3	576	340.84										
L42	83 393.34	3	576	561.25	R42	82 133.37	3	575	984.67										
L43	83 341.30	3	576	540.53	R43	82 005.89	3	575	896.62										
L44	83 253.69	3	576	540.54	R44	81 866.93	3	575	828.11										
L45	82 906.46	3	576	414.03	R45	81 719.46	3	575	780.61										
L46	82 811.82	3	576	373.55	R46	81 566.64	3	575	755.13										
L47	82 722.17	3	576	322.99	R47	81 411.73	3	575	752.22										
L48	82 638.58	3	576	262.93	R48	81 258.06	3	575	771.95										
L49	82 196.07	3	575	906.77	R49	81 108.91	3	575	813.89										
L50	82 056.55	3	575	810.40	R50	80 967.48	3	575	877.14										
L51	81 904.47	3	575	735.42	R51	80 836.79	3	575	960.35										
					<table><tr><td>Vel</td><td>7</td><td>Van</td><td>9</td><td>P1250/25</td></tr><tr><td>Sheet</td><td></td><td>of</td><td></td><td></td></tr></table>					Vel	7	Van	9	P1250/25	Sheet		of		
Vel	7	Van	9	P1250/25															
Sheet		of																	

PADRESERVE KOÖRDINATE / ROAD RESERVE CO-ORDINATES									
LINKERKANT/LEFT HAND SIDE					REGTERKANT/RIGHT HAND SIDE				
	Y		X	WG 29°		Y		X	
L52	81 743.07	3	575 683.43		R52	80 688.91	3	576 070.48	
L53	81 575.82	3	575 655.55		R53	80 553.14	3	576 142.60	
L54	81 432.76	3	575 652.87		R54	80 402.01	3	576 170.80	
L55	81 406.29	3	575 652.37		R55	80 249.36	3	576 152.50	
L56	81 238.11	3	575 673.96		R56	80 109.18	3	576 089.37	
L57	81 074.87	3	575 719.86		R57	80 047.61	3	576 042.44	
L58	80 920.09	3	575 789.08		R58	79 613.05	3	575 655.92	
L59	80 816.16	3	575 855.25		R59	79 507.26	3	575 568.26	
L60	80 777.05	3	575 880.15		R60	79 337.71	3	575 451.19	
L61	80 629.18	3	575 990.29		R61	79 156.81	3	575 352.56	
L62	80 520.13	3	576 048.21		R62	79 094.33	3	575 323.97	
L63	80 398.75	3	576 070.86		R63	78 590.20	3	575 103.90	
L64	80 276.15	3	576 056.16		R64	78 567.82	3	575 093.61	
L65	80 260.57	3	576 049.14		R65	78 508.86	3	575 079.63	
L66	80 163.57	3	576 005.45		R66	78 414.84	3	575 048.30	
L67	80 114.31	3	575 967.93		R67	78 369.55	3	575 021.46	
L68	79 679.51	3	575 581.20		R68	78 313.63	3	575 011.76	
L69	79 568.32	3	575 489.07		R69	78 238.63	3	575 141.54	
L70	79 390.13	3	575 366.03		R70	78 181.83	3	575 235.07	
L71	79 200.01	3	575 262.37		R71	78 138.37	3	575 303.29	
L72	79 134.34	3	575 232.32		R72	78 108.52	3	575 341.43	
L73	78 849.96	3	575 108.18		R73	78 073.89	3	575 371.34	
L74	78 753.86	3	575 029.12		R74	78 028.48	3	575 403.84	
L75	78 696.31	3	574 979.85		R75	77 999.38	3	575 363.18	
L76	78 665.42	3	574 943.44		R76	78 044.79	3	575 330.68	
L77	78 593.29	3	574 824.93		R77	78 072.95	3	575 306.24	
L78	78 560.92	3	574 781.30		R78	78 096.20	3	575 276.42	
L79	78 542.83	3	574 762.25		R79	78 139.67	3	575 208.20	
L80	78 520.81	3	574 742.23		R80	78 195.34	3	575 116.52	
L81	78 516.95	3	574 730.28		R81	78 277.95	3	574 973.58	
L82	78 514.37	3	574 717.39		R82	78 274.00	3	574 913.02	
L83	78 540.83	3	574 701.51		R83	78 263.42	3	574 895.21	
L84	78 598.33	3	574 679.38		R84	78 252.10	3	574 866.00	
L85	78 659.37	3	574 670.98		R85	78 243.53	3	574 833.58	
L86	78 720.71	3	574 676.76		R86	78 232.78	3	574 758.64	
L87	78 779.11	3	574 696.41		R87	78 222.51	3	574 687.04	
L88	78 852.80	3	574 731.10		R88	78 071.51	3	574 407.85	
L89	78 888.57	3	574 744.52		R89	77 987.53	3	574 278.33	
L90	78 912.51	3	574 750.00		R90	77 920.59	3	574 200.09	
L91	78 924.41	3	574 752.73		R91	77 845.74	3	574 129.37	
L92	78 974.32	3	574 755.17		R92	77 805.62	3	574 097.08	
L93	78 988.79	3	574 753.04		R93	77 772.62	3	574 074.46	
L94	79 023.75	3	574 747.88		R94	77 748.08	3	574 057.62	
L95	79 070.82	3	574 731.11		R95	77 436.48	3	573 843.93	
L96	79 180.54	3	574 679.49		R96	77 345.25	3	573 777.05	
L97	79 159.25	3	574 634.25		R97	77 292.77	3	573 732.69	
L98	79 049.53	3	574 685.87		R98	77 258.86	3	573 704.03	
L99	79 011.65	3	574 699.36		R99	77 177.71	3	573 625.22	
L100	78 971.88	3	574 705.23		R100	76 033.13	3	572 434.13	
L101	78 921.90	3	574 701.35		R101	75 898.42	3	572 293.95	
L102	78 874.09	3	574 685.86		R102	75 792.77	3	572 234.38	
					<div> <div>Vel</div> <div>8</div> <div>Van</div> <div>9</div> <div>Sheet</div> <div>of</div> <div>P1250/25</div> </div>				

PADRESERWE KOÖRDINATE / ROAD RESERVE CO-ORDINATES						
LINKERKANT/LEFT HAND SIDE				REGTERKANT/RIGHT HAND SIDE		
	Y	X	WG 29°		Y	X
L103	78 800.40	3 574 651.18		R103	75 664.64	3 572 169.86
L104	78 720.04	3 574 625.71		R104	75 631.78	3 572 149.95
L105	78 657.67	3 574 621.70		R105	75 602.44	3 572 125.14
L106	78 594.10	3 574 628.95		R106	75 560.76	3 572 120.48
L107	78 515.16	3 574 658.53		R107	75 527.33	3 572 148.36
L108	78 479.32	3 574 680.90		R108	75 423.51	3 572 227.53
L109	78 468.31	3 574 690.01		R109	75 351.51	3 572 276.45
L110	78 446.77	3 574 707.82		R110	75 277.44	3 572 322.18
L111	78 401.56	3 574 701.86		R111	75 234.91	3 572 340.59
L112	78 362.68	3 574 675.11				
L113	78 311.18	3 574 630.25				
L114	78 264.39	3 574 569.49				
L115	78 168.64	3 574 413.89				
L116	78 151.31	3 574 386.53				
L117	78 050.99	3 574 229.61				
L118	77 978.53	3 574 144.93				
L119	77 897.53	3 574 068.39				
L120	77 854.10	3 574 033.45				
L121	77 849.11	3 574 030.02				
L122	77 766.98	3 573 973.67				
L123	77 481.53	3 573 777.82				
L124	77 394.75	3 573 714.20				
L125	77 312.58	3 573 644.75				
L126	77 235.39	3 573 569.79				
L127	77 023.91	3 573 349.71				
L128	76 336.54	3 572 634.42				
L129	75 988.85	3 572 272.59				
L130	75 955.00	3 572 178.38				
L131	75 885.07	3 571 971.67				
L132	75 845.27	3 571 875.50				
L133	75 929.17	3 571 803.24				
L134	75 994.38	3 571 757.76				
L135	76 068.05	3 571 723.65				
L136	76 172.93	3 571 702.07				
L137	76 279.86	3 571 707.55				
L138	76 381.98	3 571 739.73				
L139	76 419.83	3 571 757.19				
L140	76 440.78	3 571 711.79				
L141	76 402.93	3 571 694.33				
L142	76 288.72	3 571 658.35				
L143	76 169.14	3 571 652.22				
L144	76 051.85	3 571 676.34				
L145	75 973.68	3 571 712.10				
L146	75 896.54	3 571 765.35				
L147	75 784.35	3 571 861.97				
L148	75 735.35	3 571 851.90				
L149	75 703.53	3 571 826.61				
L150	75 614.21	3 571 762.45				
L151	75 574.38	3 571 724.15				
L152	75 509.25	3 571 616.82				
				Vel Sheet	9 of	P1250/25