

## DEPARTMENT OF FORESTRY, FISHERIES AND THE ENVIRONMENT

NO. 6608

12 September 2025

## NATIONAL ENVIRONMENTAL MANAGEMENT ACT, 1998 (ACT NO. 107 OF 1998)

**NOTICE OF THE INTENTION TO ADOPT THE GENERIC ENVIRONMENTAL MANAGEMENT PROGRAMME FOR THE KRUGER NATIONAL PARK AS AN ENVIRONMENTAL MANAGEMENT INSTRUMENT FOR THE PURPOSE OF EXCLUDING IDENTIFIED ACTIVITIES**

I, Dion Travers George, Minister of Forestry, Fisheries and the Environment, hereby give notice of the intention to adopt the *Generic Environmental Management Programme for the Kruger National Park 2025, revision 0* as an environmental management instrument in terms of the Regulations Laying Down the Procedure for the Adoption of Environmental Management Instruments, 2019, and based on compliance with this instrument, in terms of section 24(2)(e) of the National Environmental Management Act, 1998 (Act No. 107 of 1998), to exclude the South African National Parks (SANParks), subject to certain conditions, from the requirement to obtain environmental authorisation for identified activities as set out in the Schedule.

The adoption of the generic environmental management programme as an environmental management instrument and the exclusion of identified activities from the environmental authorisation requirement are intended to facilitate and simplify the implementation of maintenance, upgrading, expansion and new developments, within the identified use zones, within the Kruger National Park. The exclusion of the identified activities will speed up implementation and ease the cost of doing business, whilst still providing requirements and measures to protect the environment.

This exclusion does not exclude SANParks from complying with any other applicable and relevant legislation when undertaking identified activities within the Kruger National Park.

Members of the public are invited to submit written comments or input, within 30 days from the date of the publication of this Notice in the *Government Gazette*, or the notice in the newspaper, whichever occurs last, to any of the following addresses:

By post to: Department of Forestry, Fisheries and the Environment  
The Director-General  
Attention: Mr Simon Moganetsi  
Private Bag X447  
**PRETORIA**  
0001

By hand at: Reception, Environment House, 473 Steve Biko Road, Arcadia, Pretoria.

By e-mail: [smoganetsi@dffes.gov.za](mailto:smoganetsi@dffes.gov.za).

A hard copy of any document associated with this Notice may be requested from Ms M Masondo at tel: 012 399 9277, email: [mmasondo@dfre.gov.za](mailto:mmasondo@dfre.gov.za) or collected at Environment House, 473 Steve Biko Road, Arcadia, Pretoria. The Generic Environmental Management Programme can be downloaded from the Department's website at [https://www.dfre.gov.za/projectprogrammes/environmental\\_management\\_instruments](https://www.dfre.gov.za/projectprogrammes/environmental_management_instruments) and the Government Notice can be downloaded from the Department's website at [https://www.dfre.gov.za/legislation/gazetted\\_notices](https://www.dfre.gov.za/legislation/gazetted_notices).

This Notice contains a revised version of the documents contained in Government Notice No. 5234 published on 27 September 2024 in *Government Gazette* No. 51307 for public comment and reflects the incorporation of amendments made based on the second call for public comment.

Any enquiries in connection with the Notice can be directed to Mr Simon Moganetsi by phone at 012 399 9309 or by e-mail at [smoganetsi@dfre.gov.za](mailto:smoganetsi@dfre.gov.za).

Comments or input received after the closing date may be disregarded.

The Department of Forestry, Fisheries and the Environment complies with the Protection of Personal Information Act, 2013 (Act No. 4 of 2013). Comments received and responses thereto are collated into a comments and responses report which will be made available to the public as part of the consultation process. If a commenting party has any objection to his or her name, or the name of the represented company/ organisation, being made publicly available in the comments and responses report, such objection should be highlighted in bold as part of the comments submitted in response to this Government Notice.



**DR D T GEORGE**  
**MINISTER OF FORESTRY, FISHERIES AND THE ENVIRONMENT**

## SCHEDULE

### 1. Introduction

Section 24(2)(e) of the National Environmental Management Act, 1998 (Act No. 107 of 1998) (the Act) enables the Minister responsible for environmental affairs to exclude activities identified in terms of sections 24(2)(a) and 24(2)(b) of the Act from the requirement to obtain environmental authorisation based on an environmental management instrument adopted in the prescribed manner.

The Department of Forestry, Fisheries and the Environment has prepared a *Generic Environmental Management Programme for the Kruger National Park 2025, revision 0* (the Generic EMPr). The Generic EMPr stipulates measures to avoid, manage and mitigate the environmental impacts and risks associated with the implementation of identified activities contained in paragraph 2.1.

The Generic EMPr has been prepared based on-

- the determination of environmental sensitivities, associated with the various *use zones* within the Kruger National Park, which have been determined by research undertaken over several years, the findings of which have been incorporated into the preparation of zoning plans for the Kruger National Park in 2008, 2011 and 2017. This research considered the biophysical, heritage and scenic resources, the regional context and the Kruger National Park's current and planned infrastructure and tourism products and needs;
- a number of site specific environmental impact assessments conducted since 1997<sup>1</sup>, which have identified management and mitigation measures associated with environmental impacts for identified activities associated with projects undertaken in the park; and
- the expertise of the Kruger National Park's scientists and technical staff who are familiar with the environment of the park and the mandate of the South African National Parks (SANParks), which is to conserve and protect the biodiversity and environmental resources within the park.

The Generic EMPr is intended to be adopted as an environmental management instrument in terms of the Regulations Laying Down the Procedures to be Followed for the Adoption of Environmental Management Instruments, read with section 24(5)(bA) of the Act, for the purposes of excluding SANParks from the requirement to obtain an environmental authorisation for implementing activities identified in terms of sections 24(2)(a) and (b) of the Act, as contemplated in paragraph 2.1, read with Appendix 5, when undertaken within the Kruger National Park, subject to the limitations contained in paragraph 2.2 and the conditions contained in paragraph 3.

### 2. Scope of the Exclusion

This exclusion applies to identified activities as follows:

2.1 Identified activities, contemplated in Appendix 5, implemented as projects<sup>2</sup> for-

<sup>1</sup> A list of EIAs is available on the SANParks website at <https://www.sanparks.org>.

<sup>2</sup> Project, as defined in the Generic Environmental Management Programme, means the implementation of any identified activity or a combination of identified activities that are excluded in terms of paragraph 2.1, read with Appendix 5, of this Exclusion Notice, which are given a project name and is recorded in the project register as contemplated in paragraph 4.1 of the Generic Environmental Management Programme.

- 2.1.1 maintenance of civil and electrical infrastructure<sup>3</sup>, staff accommodation, contractors' yards, office facilities, fencing, firebreaks, tourist accommodation or amenities<sup>4</sup>, security, anti-poaching facilities or ecological infrastructure<sup>5</sup>;
  - 2.1.2 development of civil and electrical infrastructure, staff accommodation, contractors' yards, office facilities, fencing, firebreaks, tourist accommodation or amenities, security or anti-poaching facilities; and
  - 2.1.3 expansion and upgrades to civil and electrical infrastructure, staff accommodation, contractors' yards, office facilities, fencing, firebreaks, tourist accommodation or amenities, security or anti-poaching facilities.
- 2.2 The following limits and prohibitions are set for each project:
- 2.2.1 Clearance of indigenous vegetation-
    - 2.2.1.1 may not be undertaken in the wilderness and remote "use zones"; and
    - 2.2.1.2 of up to and including 3 hectares may be undertaken in the primitive, low intensity leisure and high intensity leisure "use zones", but excluding associated linear infrastructure;
  - 2.2.2 Over and above the 3 hectares limit per project in paragraph 2.2.1.2, for the purposes of the development of a solar facility, additional clearance of indigenous vegetation of up to and including 1.5 hectares in the primitive "use zone" and up to and including 3 hectares in the low intensity leisure zone, is permitted;
  - 2.2.3 Tourist accommodation-
    - 2.2.3.1 may not be developed in the wilderness and remote "use zones";
    - 2.2.3.2 of up to and including 15 people may be developed in the primitive use zone;
    - 2.2.3.3 of up to and including 30 people may be developed in the low intensity leisure and high intensity leisure "use zones";
    - 2.2.3.4 may be expanded to accommodate up to, and including, an additional 15 people in the primitive "use zone"; and
    - 2.2.3.5 may be expanded to accommodate up to, and including, an additional 30 people in the low intensity leisure or high intensity leisure "use zones".
- 2.3 Notwithstanding any limits or thresholds provided for in the Park Management Plan, any developments that exceed the limits in paragraph 2.2 will require an environmental authorisation prior to commencement.

### 3. Conditions of Exclusion

- 3.1 The following conditions will be applicable to projects contemplated in paragraphs 2.1.1 to 2.1.3, read with Appendix 5:
- 3.1.1 Projects must be located in the appropriate "use zones" contemplated in the Kruger National Park Management Plan, included as Appendix 1 – 4;

<sup>3</sup> The civil and electrical infrastructure that fall within the scope of the exclusion are roads, parking areas, culverts, drifts, pipelines, tracks, bridges, air strips, electricity generation by means of solar and diesel generators, dams, weirs, water holes and water impoundments, sewage and water facilities, electricity substations, powerlines, cables, telecommunication towers, erosion controls and includes the excavation of gravel, sand or stone for the maintenance, expansion or development of such infrastructure.

<sup>4</sup> Amenities includes bomas, picnic sites, bird hides, trails, trail camps, event sites, boardwalks, lookout and view points.

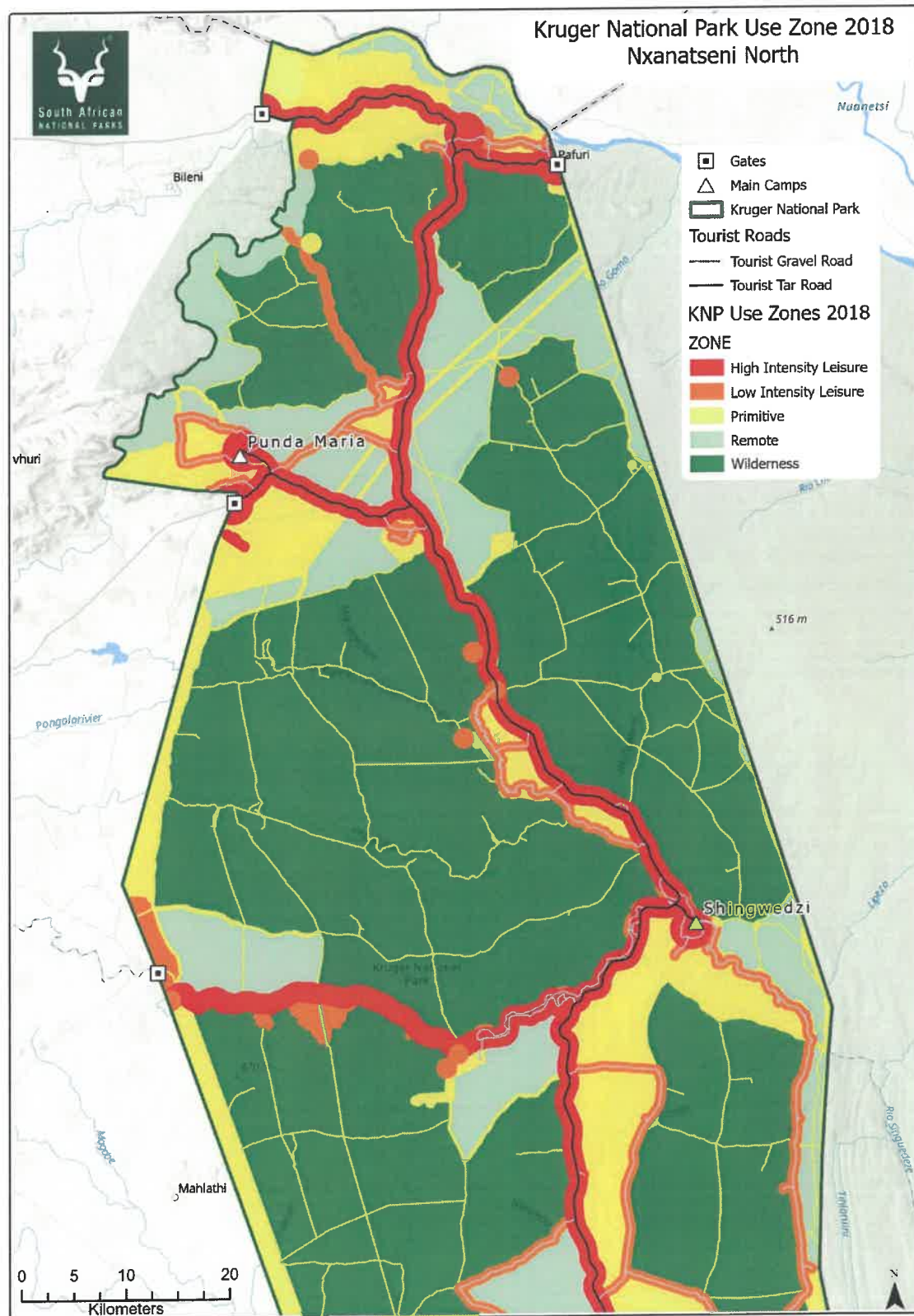
<sup>5</sup> Ecological infrastructure means naturally functioning ecosystems that provide valuable services to people, including water and climate regulation, soil formation, and disaster risk reduction.



- 3.1.2 Projects must be given a name and a number and be included in the register to be kept and updated by SANParks. All the excluded identified activities triggered by a project must also be included in the register;
  - 3.1.3 Prior to the commencement of any identified activity a site sensitivity confirmation of the proposed project site must be undertaken by means of a walkthrough by the relevant Kruger National Park specialists<sup>6</sup> as well as representatives from the Conservation Management and the Technical Services departments of the Kruger National Park, as appropriate, to identify any areas that are unsuitable for projects, which must be cordoned off during construction and any species of conservation concern that must either be taken to the Kruger National Park nursery or relocated to other suitable areas in the park in consultation with the relevant experts in the park; and
  - 3.1.4 SANParks must conduct quarterly audits and prepare quarterly audit reports to be submitted with the annual audit report contemplated in paragraph 3.4, read with paragraph 3.5.
- 3.2 Projects undertaken within the Kruger National Park must comply with the requirements of the Generic EMP<sub>r</sub>, which requirements are binding.
- 3.3 SANParks must conduct an annual environmental audit to monitor compliance of all projects undertaken, with-
- 3.3.1 paragraph 2 of the exclusion;
  - 3.3.2 paragraph 3.1 of the exclusion; and
  - 3.3.3 the requirements of the Generic EMP<sub>r</sub>.
- 3.4 The audit contemplated in paragraph 3.3 must culminate in an annual audit report which is due every 12 months from the coming into effect of this exclusion.
- 3.5 The annual audit report must be submitted to the compliance monitoring unit within the national department responsible for environmental affairs, and uploaded to the website of SANParks, within 2 months of completion.
- 3.6 Failure to comply with the Generic EMP<sub>r</sub> or the conditions contained in paragraphs 3.1.2 – 3.1.4 in this Schedule constitutes an offence in terms of section 49A(1)(c) and 49A(1)(d) of the Act.
- 3.7 An application for environmental authorisation for identified activities and project types contemplated in paragraph 2.1, read with Appendix 5, of this exclusion, submitted in terms of the EIA Regulations which is pending on the date of the coming into effect of this Notice, must be finalised in accordance with the procedures of the EIA Regulations, or may be withdrawn.
- 3.8 An environmental authorisation issued for identified activities and project types contemplated in paragraph 2.1, read with Appendix 5, of this exclusion remains valid and is subject to the requirements of the EIA Regulations.

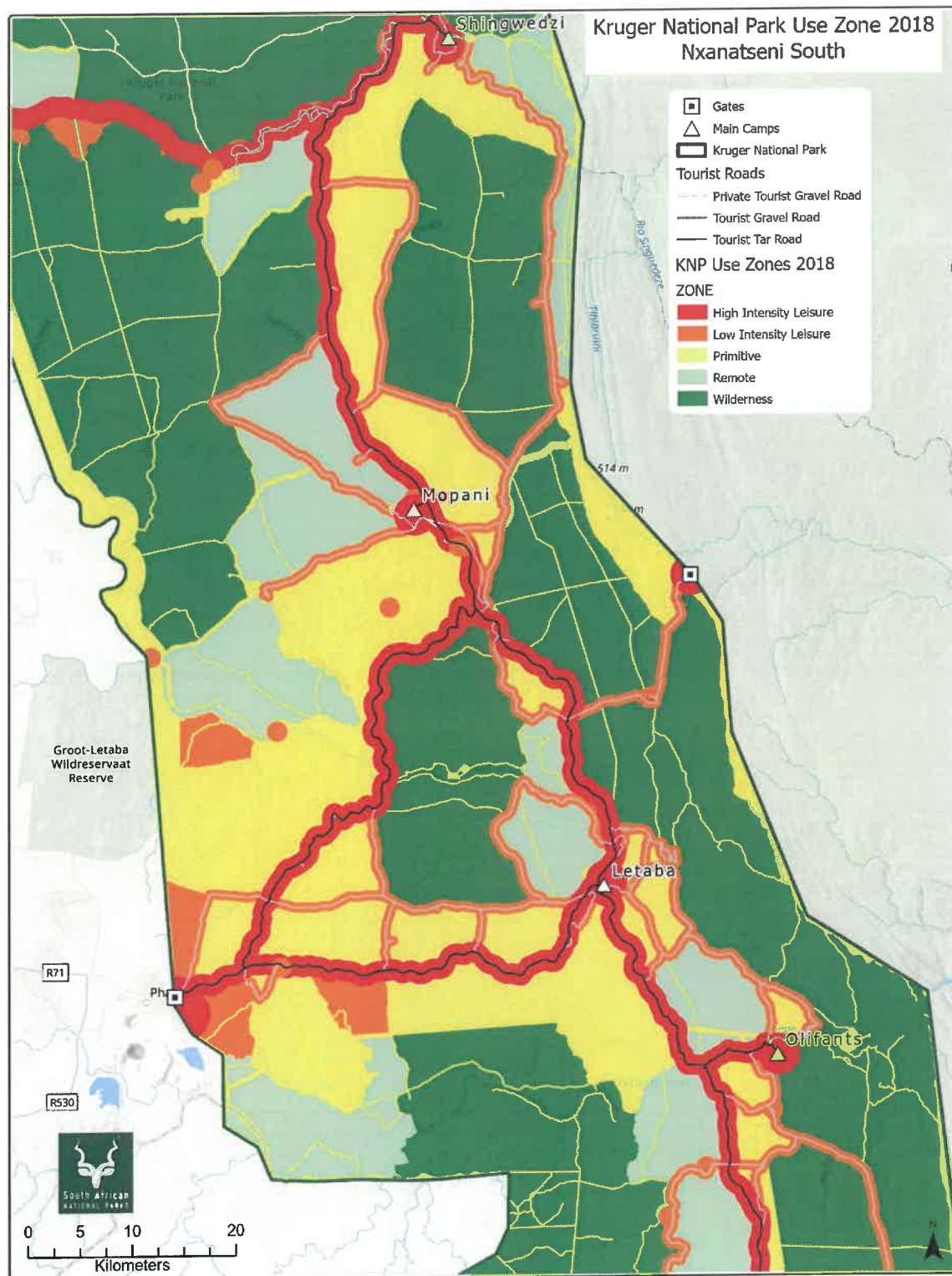
<sup>6</sup> The specialist would be determined based on the sensitivity of the areas and could include specialists qualified in the fields of ecology, biodiversity, heritage, animal or plant species as relevant.

## APPENDIX 1: Kruger National Park – Nxanatseni North



**Figure 1: Kruger National Park - Use Zone Nxanatseni North**

## APPENDIX 2: Kruger National Park – Nxanatseni South



**Figure 2: Kruger National Park - Nxanatseni South**



## APPENDIX 3: Kruger Park Use Zones – Marula North

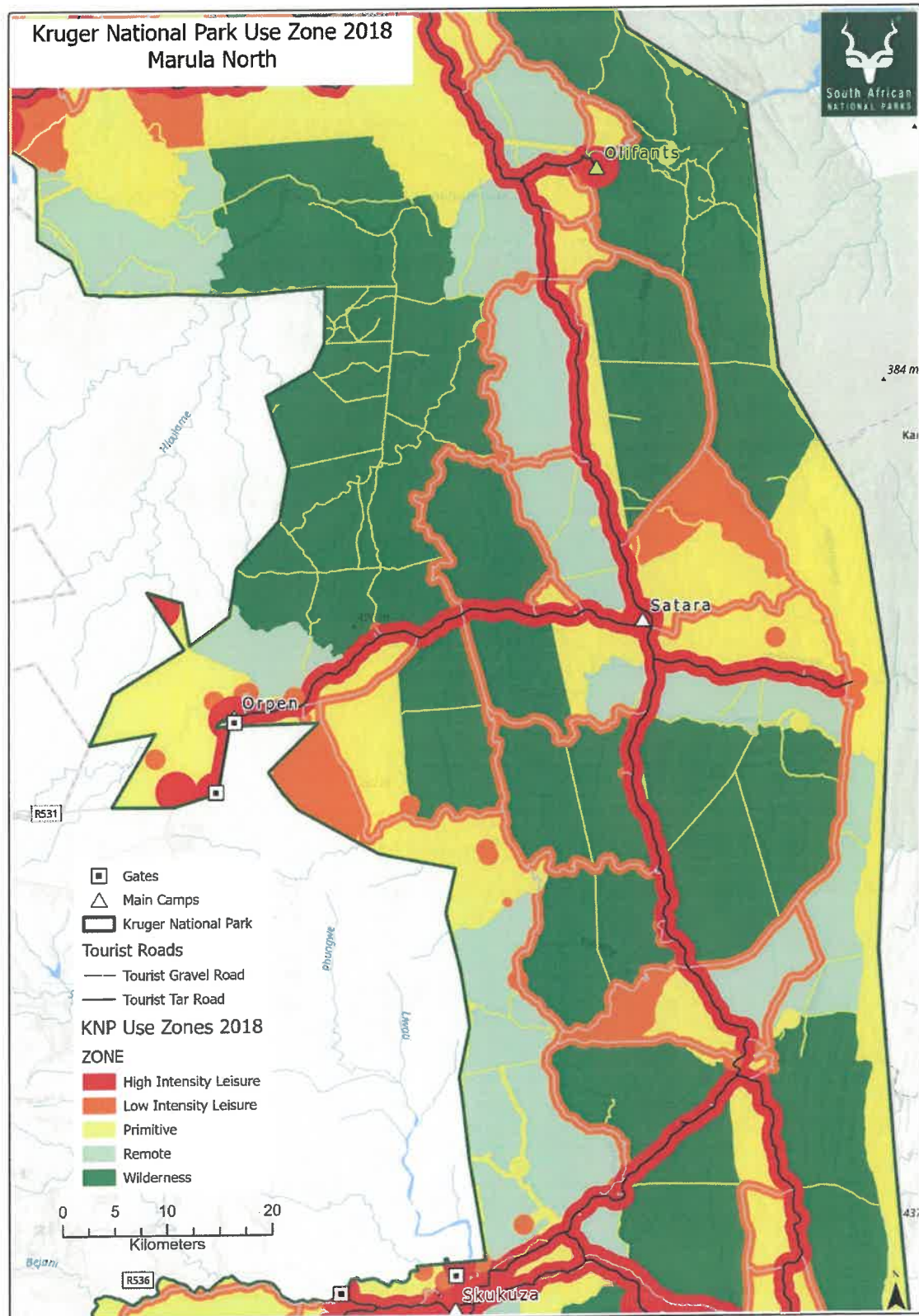
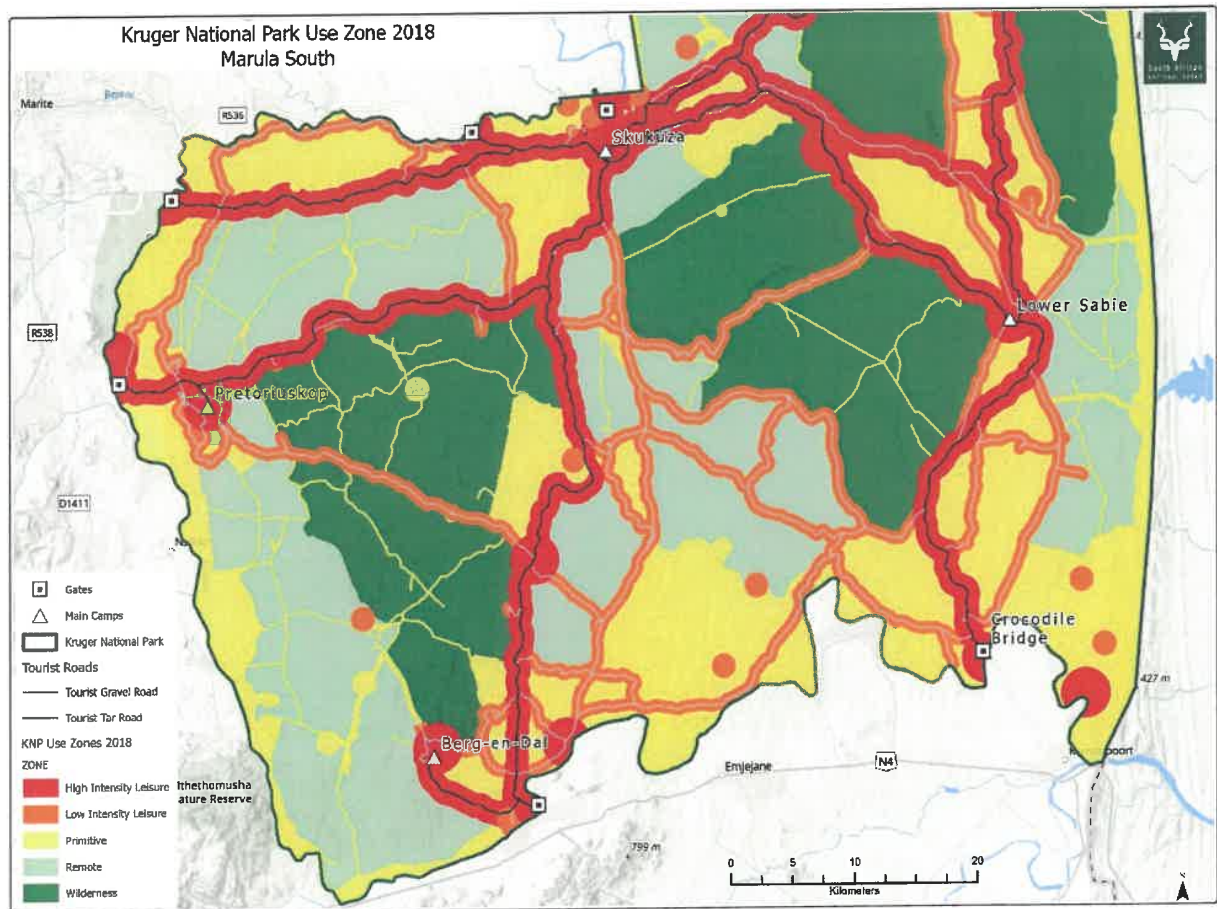


Figure 3: Kruger National Park - Marula North



#### APPENDIX 4: Kruger National Park Use Zones – Marula South



**Figure 4: Kruger National Park - Marula South**

**Appendix 5: Identified activities to be excluded in the Kruger National Park**

The following identified activities published in the Environmental Impact Assessment Regulations Listing Notices, 2014 (as amended) are excluded from the requirement to obtain environmental authorisation:

<b>Identified activities are excluded for:</b>	<b>Identified activities – Listing Notice 1</b>	<b>Identified activities activity – Listing Notice 3</b>
Maintenance	19, 21E, 27, 67.	12, 26.
Development of infrastructure, facilities and amenities	1, 2, 9, 10, 11, 12, 13, 19, 21E, 24, 25, 27, 67.	2, 3, 4, 5, 6, 7, 10, 11, 12, 14, 15, 26.
Expansion and upgrades to facilities, infrastructure and amenities	21E, 24, 27, 36, 37, 45, 46, 47, 48, 50, 56, 57, 67.	12, 15, 16, 17, 18, 19, 21, 22, 23, 26.
Closure of facilities, structures or infrastructure with an operational component	31.	