

---

**GOVERNMENT NOTICES • GOEWERMENTSKENNISGEWINGS**

---

**DEPARTMENT OF TRANSPORT**

NO. 6432

11 July 2025

**THE SOUTH AFRICAN NATIONAL ROADS  
AGENCY SOC LIMITED****Registration No: 1998/009584/30**

---

**DECLARATION AMENDMENT OF NATIONAL ROAD N11 SECTION 12****AMENDMENT OF DECLARATION No. 311 OF 2018**

By virtue of Section 40 (1)(b) of The South African National Roads Agency Limited and National Roads Act, 1998 (Act No. 7 of 1998), I hereby amend Declaration No. 311 of 2018 by substituting it in its entirety, the accompanying sheets 1 to 27 of Plan No. P1178/19.

In the town of Marble Hall the N11 Section 12 starts at the intersection with the streets known as Ewoud Malan Street and First Street at time of declaration, therefrom it follows the street known as First Street in a general northerly direction, at time of declaration.

In the town of Roedtan the N11 Section 12 enters the town from the south and follows the street known as Main Road, at time of declaration.

**(National Road N11 Section 12: Marble Hall – N1/25X Intersection)****MINISTER OF TRANSPORT**

## DEPARTEMENT VAN VERVOER

NO. 6432

11 Julie 2025

**DIE SUID-AFRIKAANSE NASIONALE  
PADAGENTSKAP MSB BEPERK**Registrasie No: 1998/009584/30

---

**VERKLARING WYSIGING VAN NASIONALE PAD N11 SEKSIE 12**

WYSIGING VAN VERKLARING NO. 311 VAN 2018.

Kragtens Artikel 40(1)(b) van die Wet op die Suid-Afrikaanse Nasionale Padagentskap Beperk en op Nasionale Paaie, 1998 (Wet no. 7 van 1998), wysig ek hiermee Verklaring No. 311 van 2018 deur dit in sy geheel, te vervang met meegaande velle 1 tot 27 van Plan no. P1178/19.

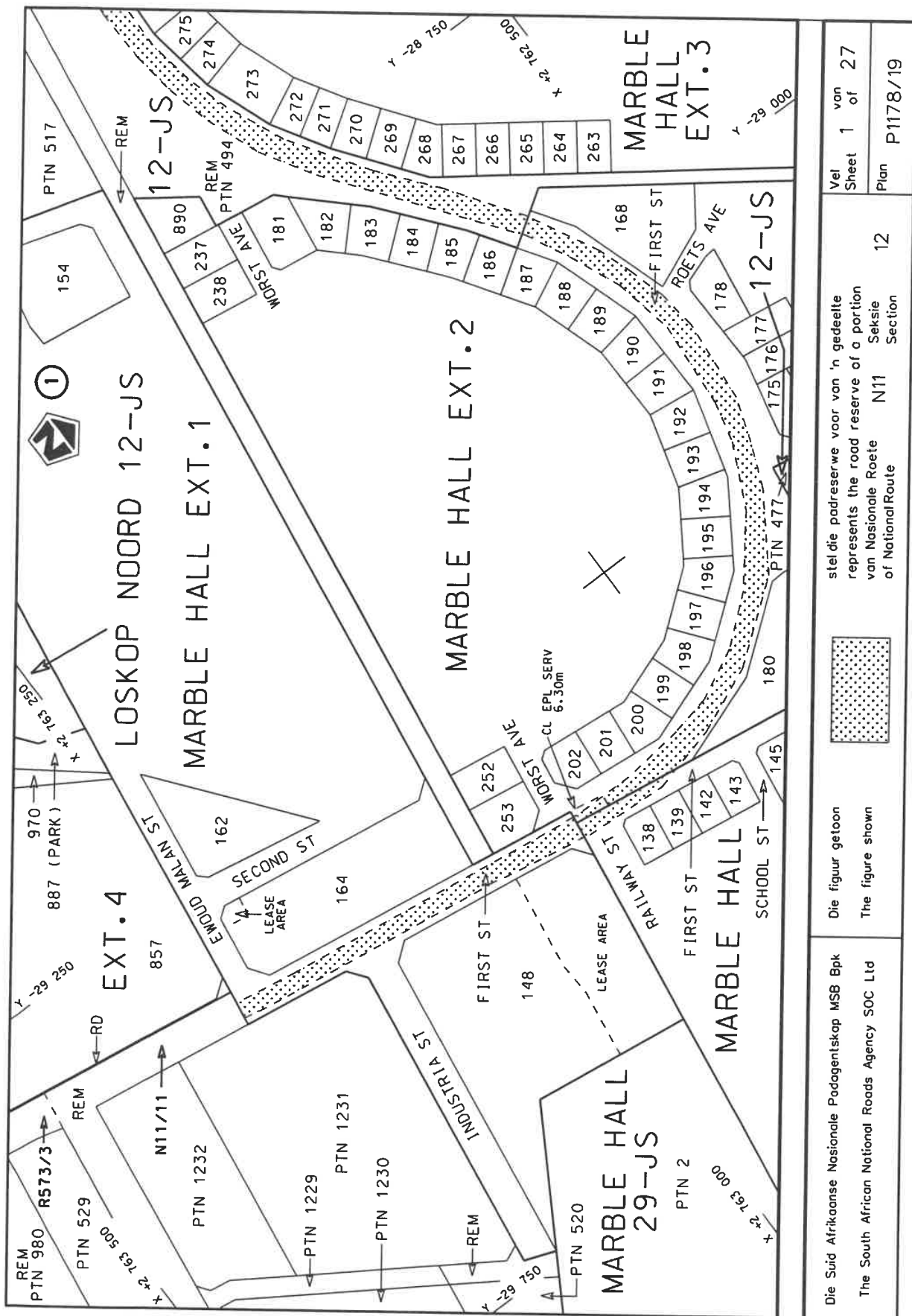
In die dorp Marble Hall begin die N11 Seksie 12 by die interseksie met die strate bekend as Ewoud Malanstraat en Eerstestraat tydens datum van verklaring, daarvandaan volg dit die straat bekend as Eerstestraat in 'n algemene noordelike rigting, tydens datum van verklaring.

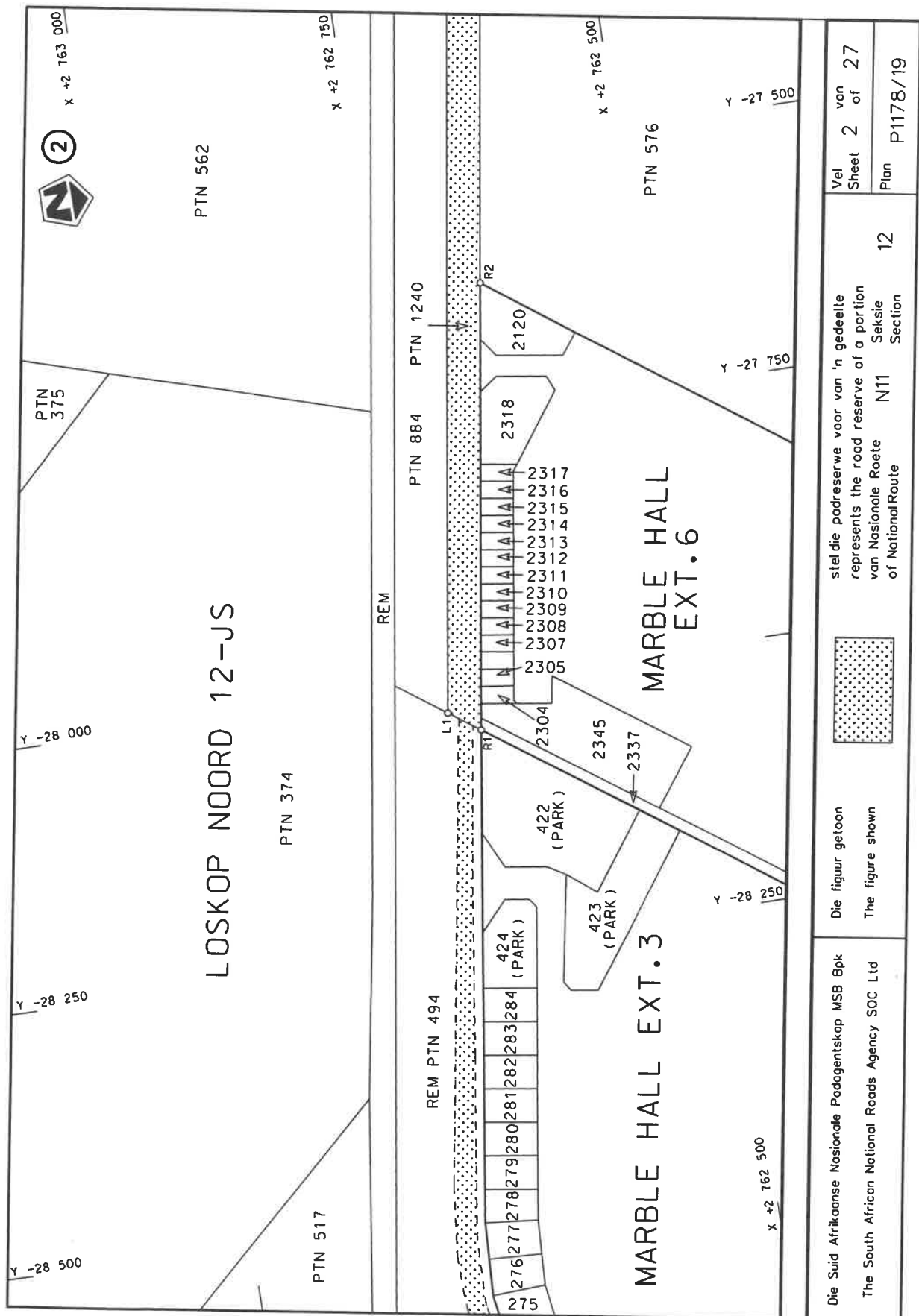
In die dorp Roedtan kom die N11 Seksie 12 die dorp binne vanuit die suide en volg dan die straat bekend as Hoofpad, tydens datum van verklaring.

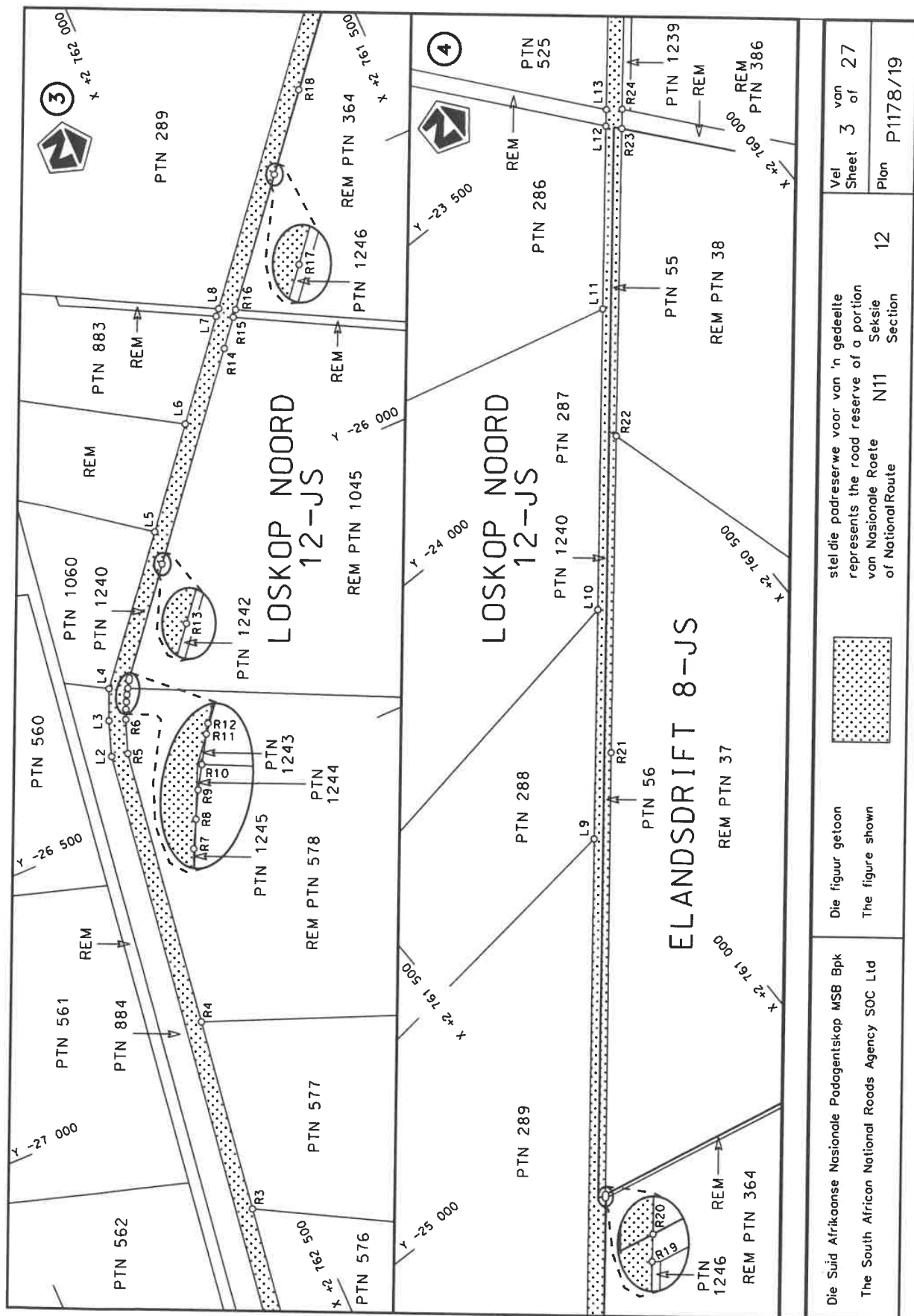
**(Nasionale Pad N11 Seksie 12: Marble Hall – N1/25X Interseksie)**

---

MINISTER VAN VERVOER

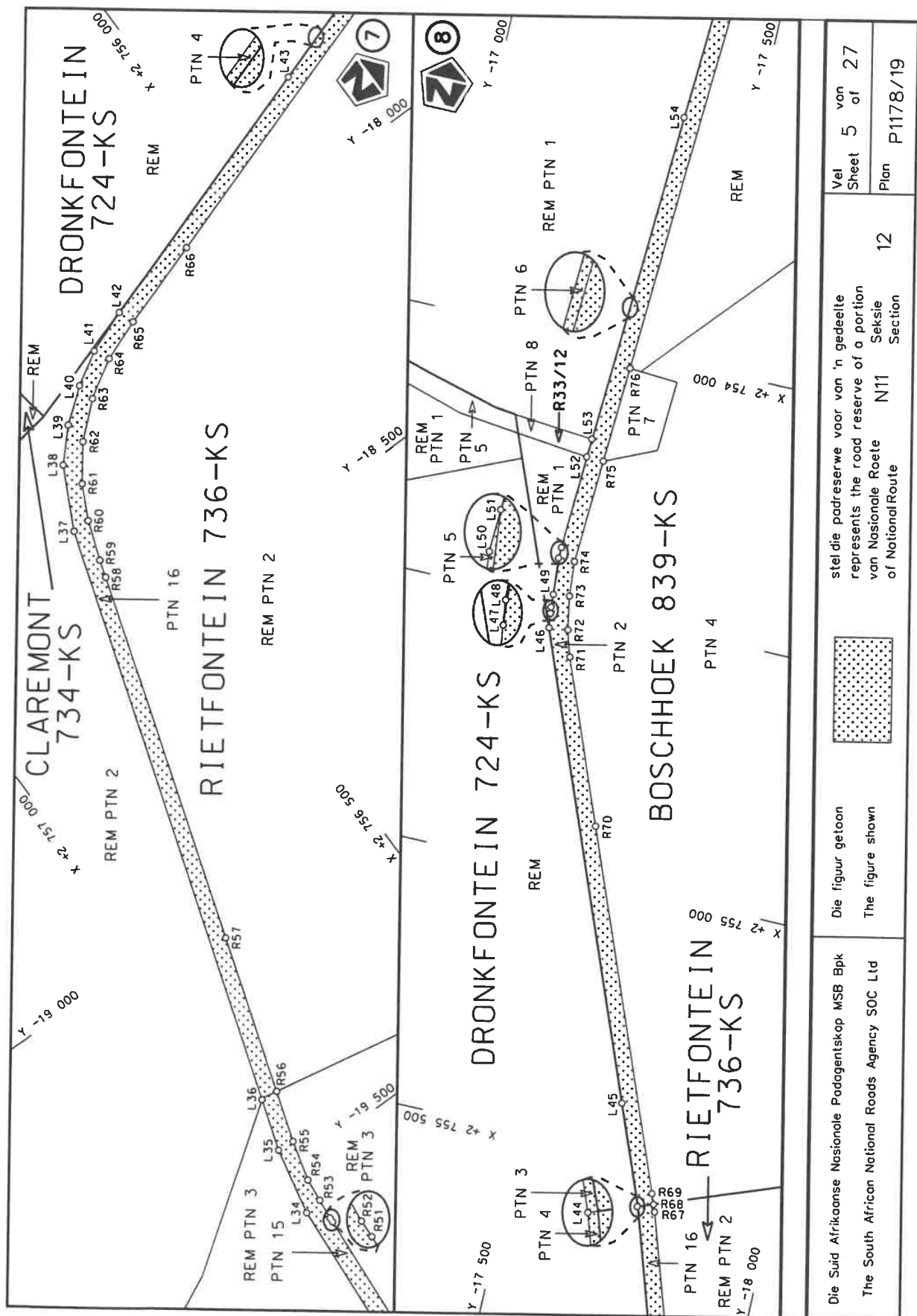


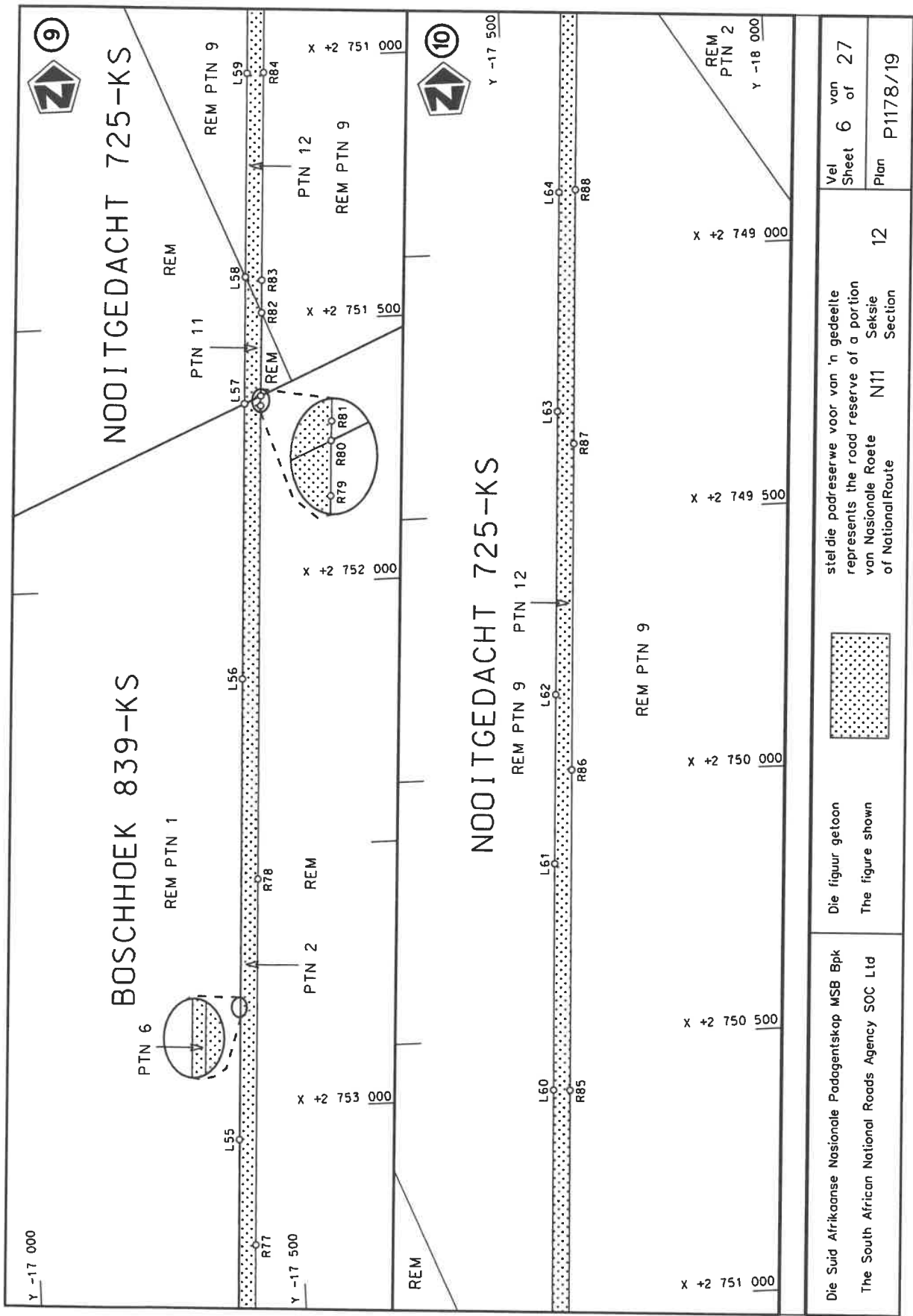




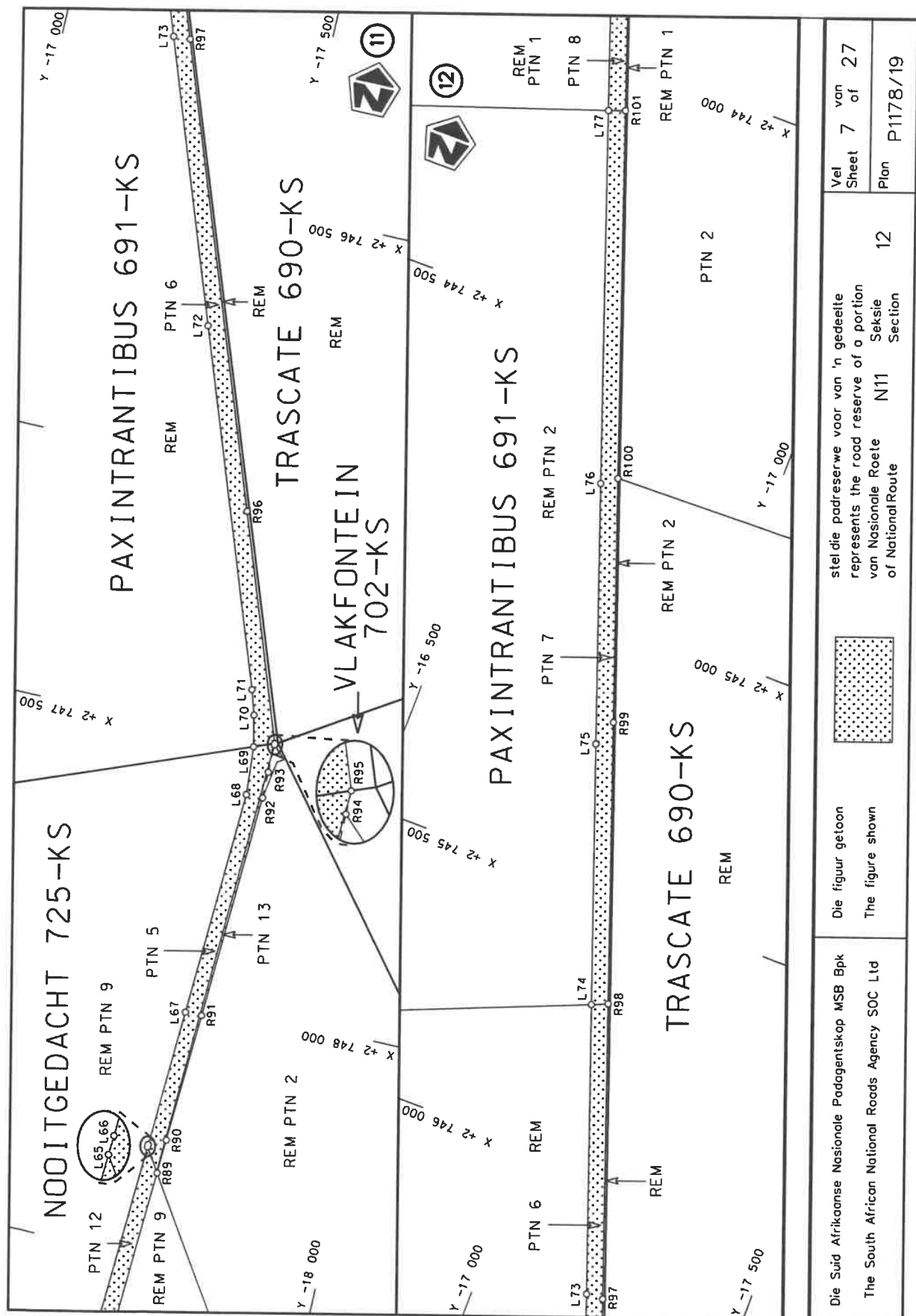


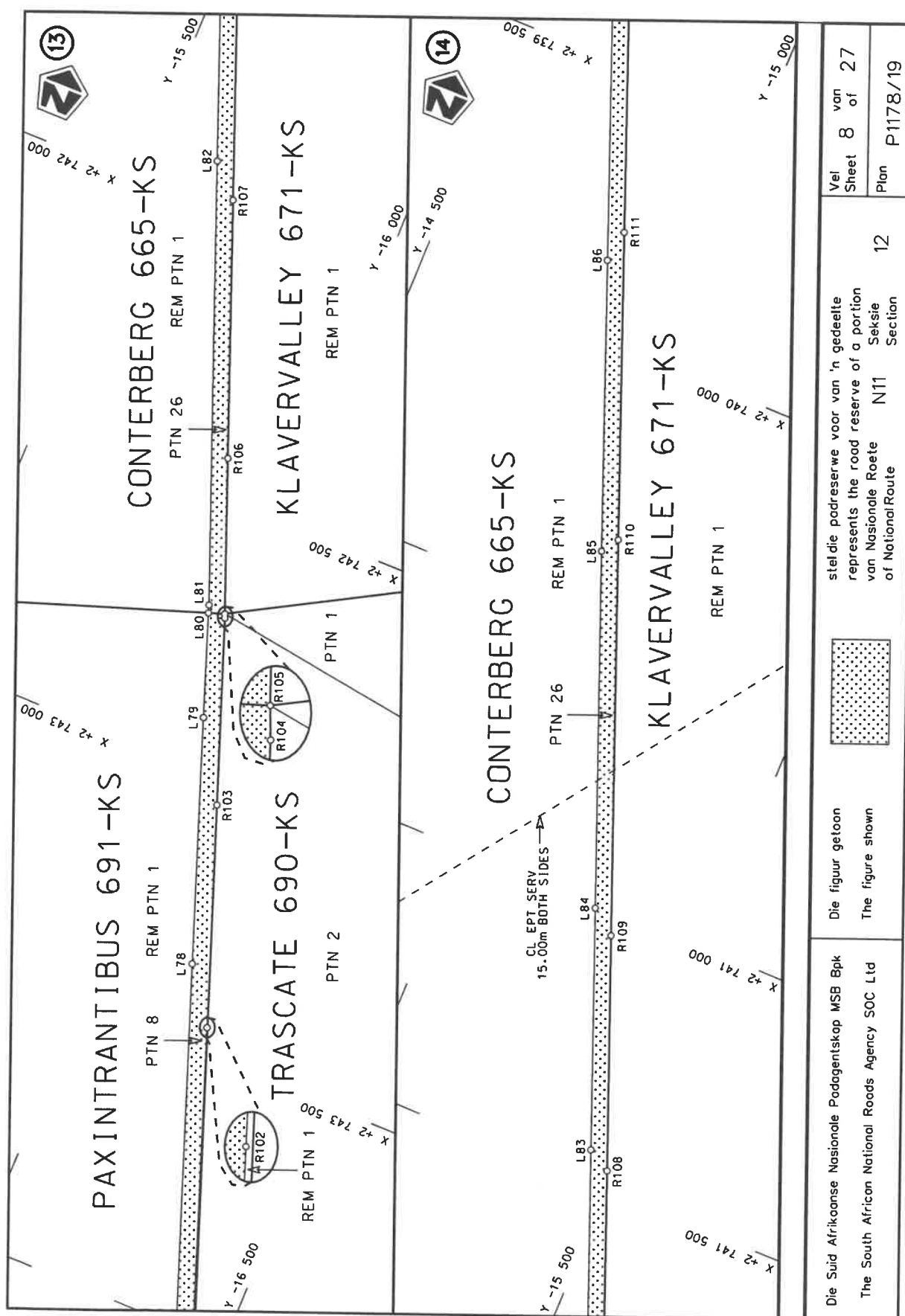


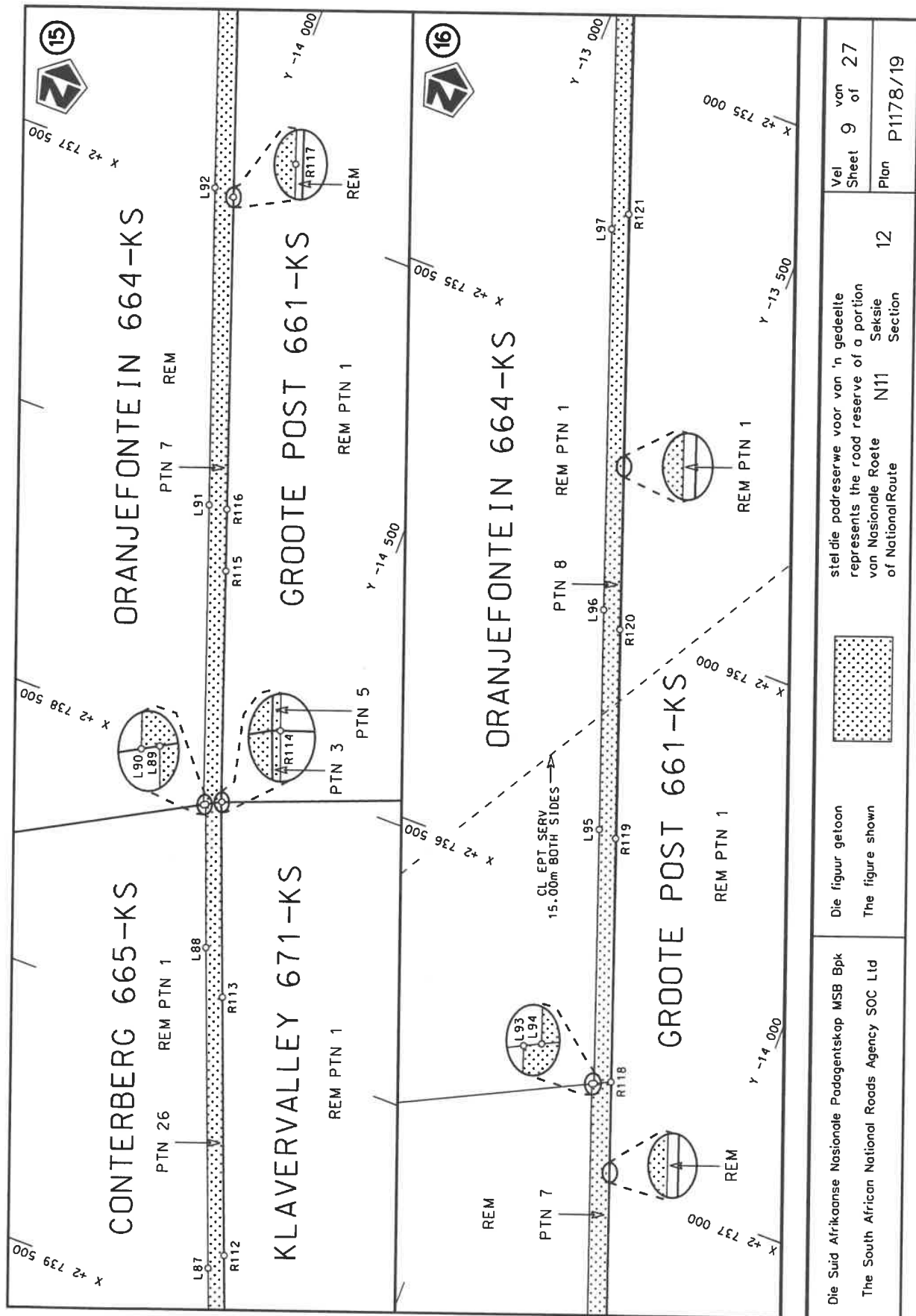


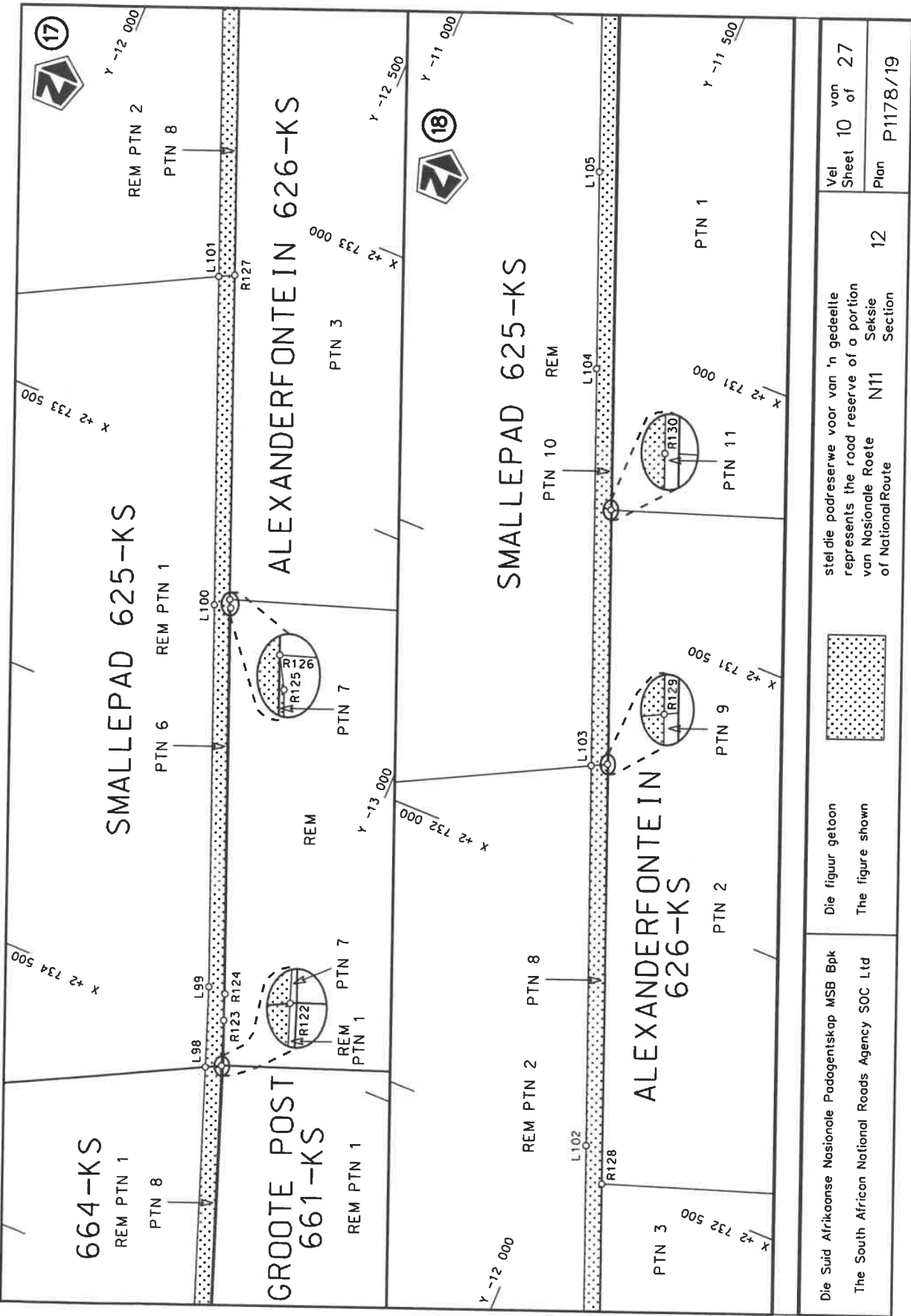


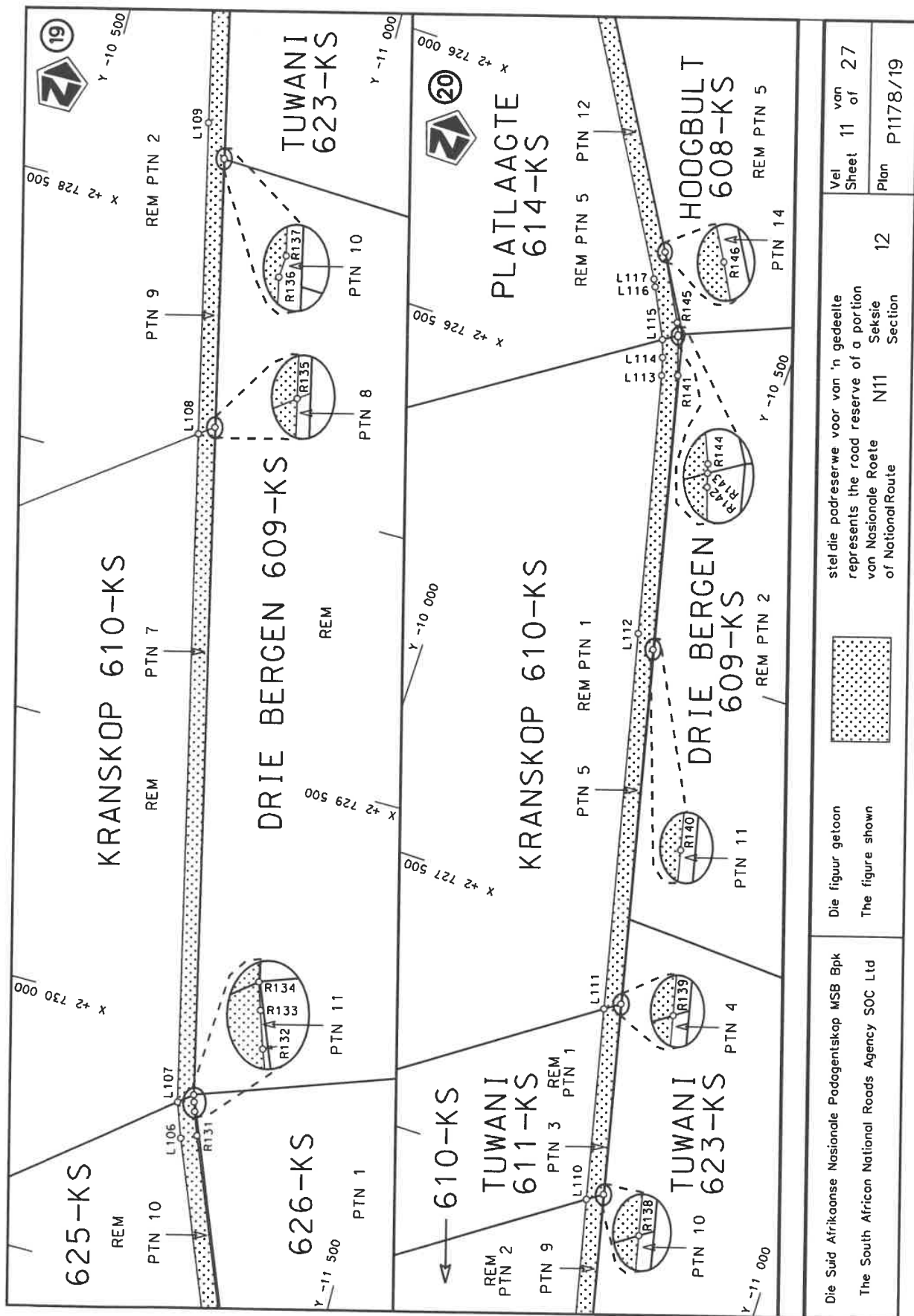




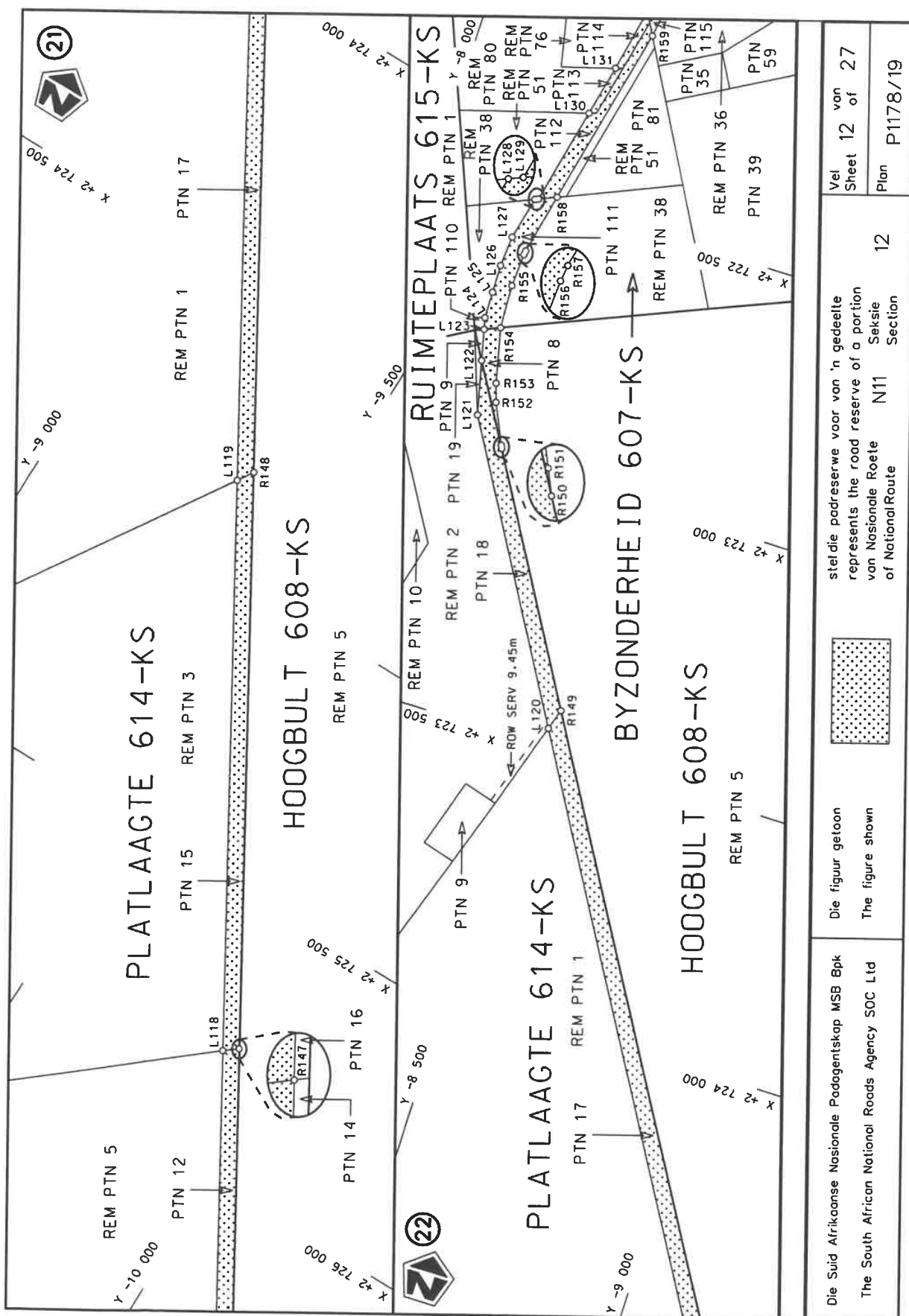


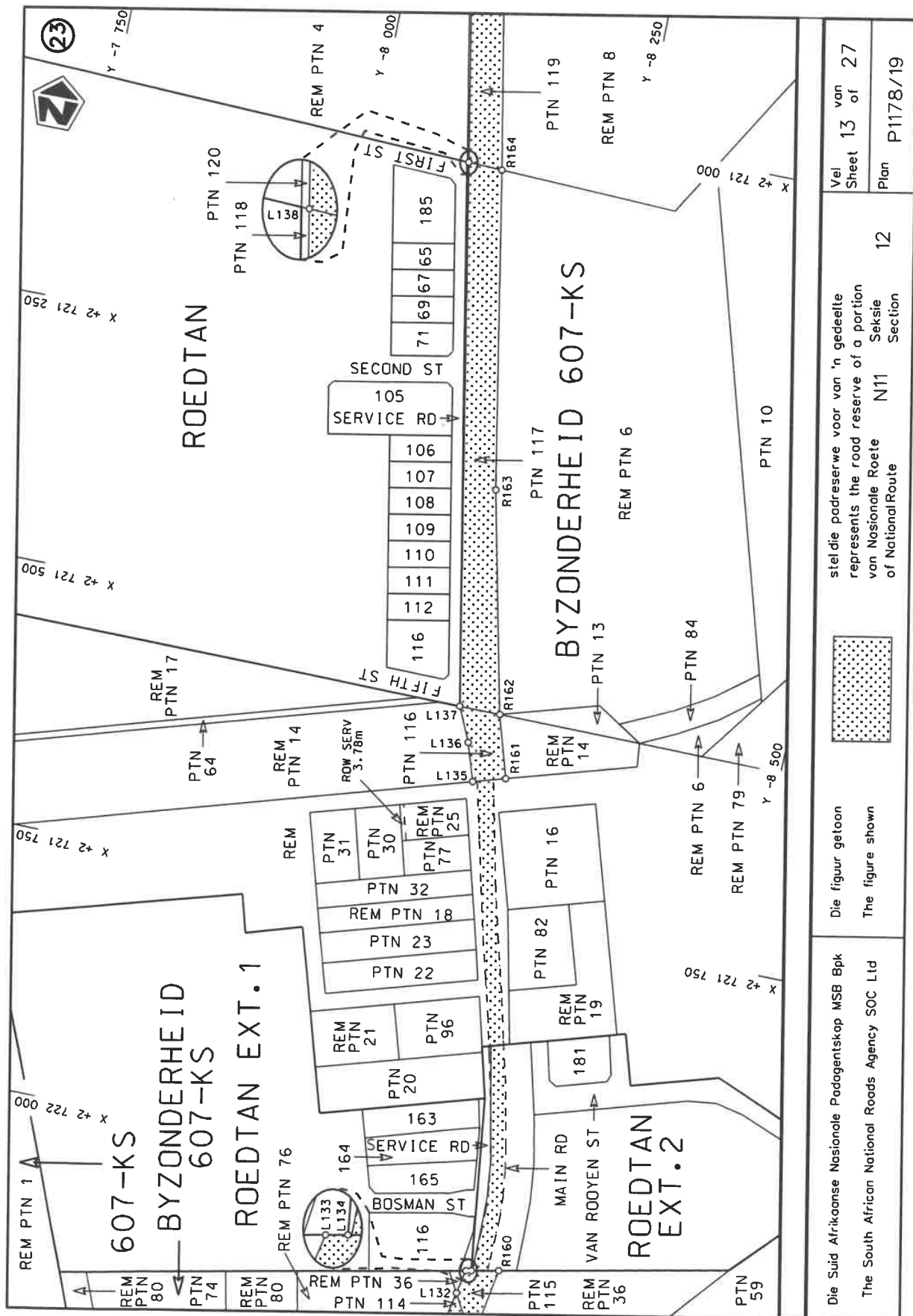




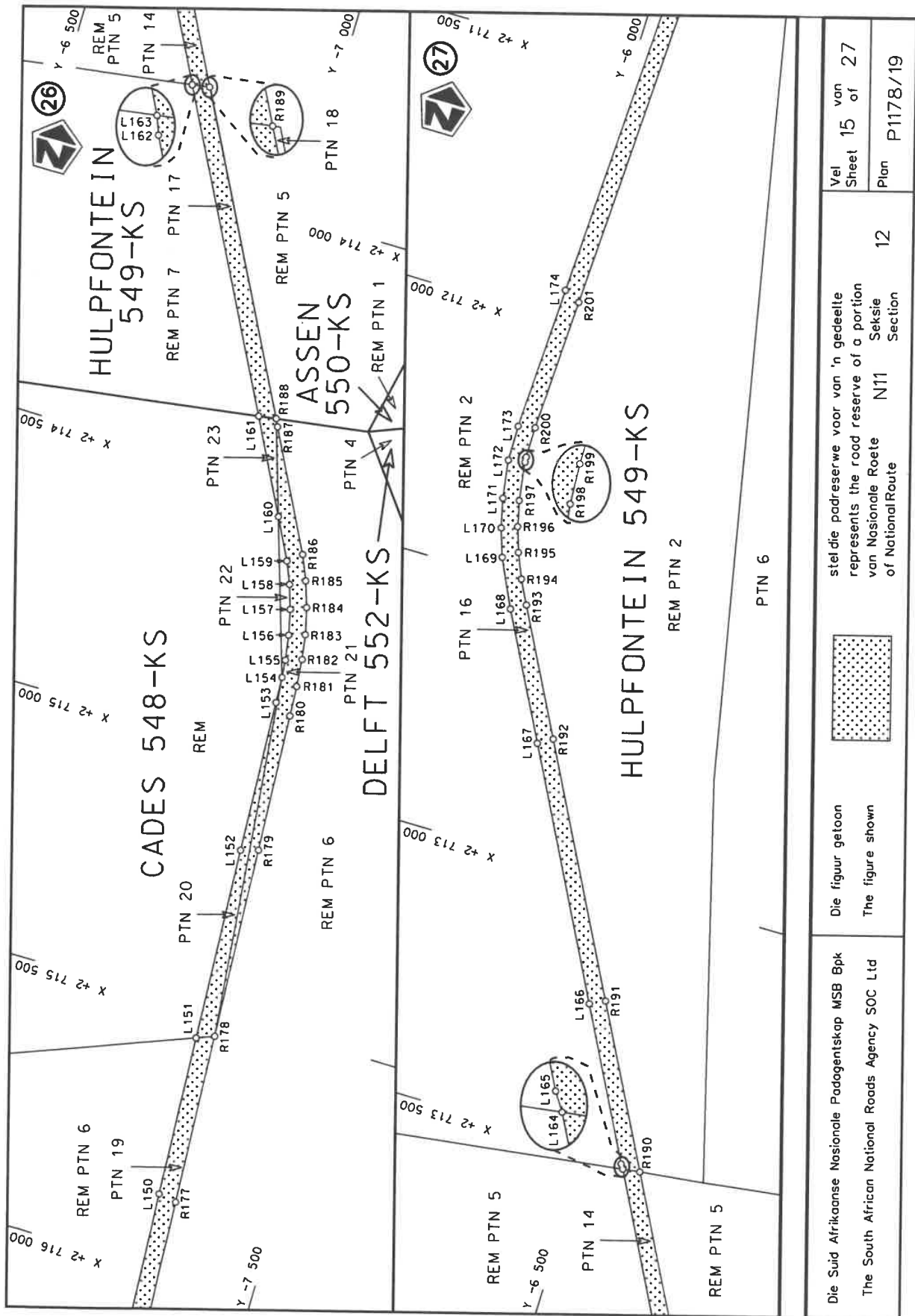


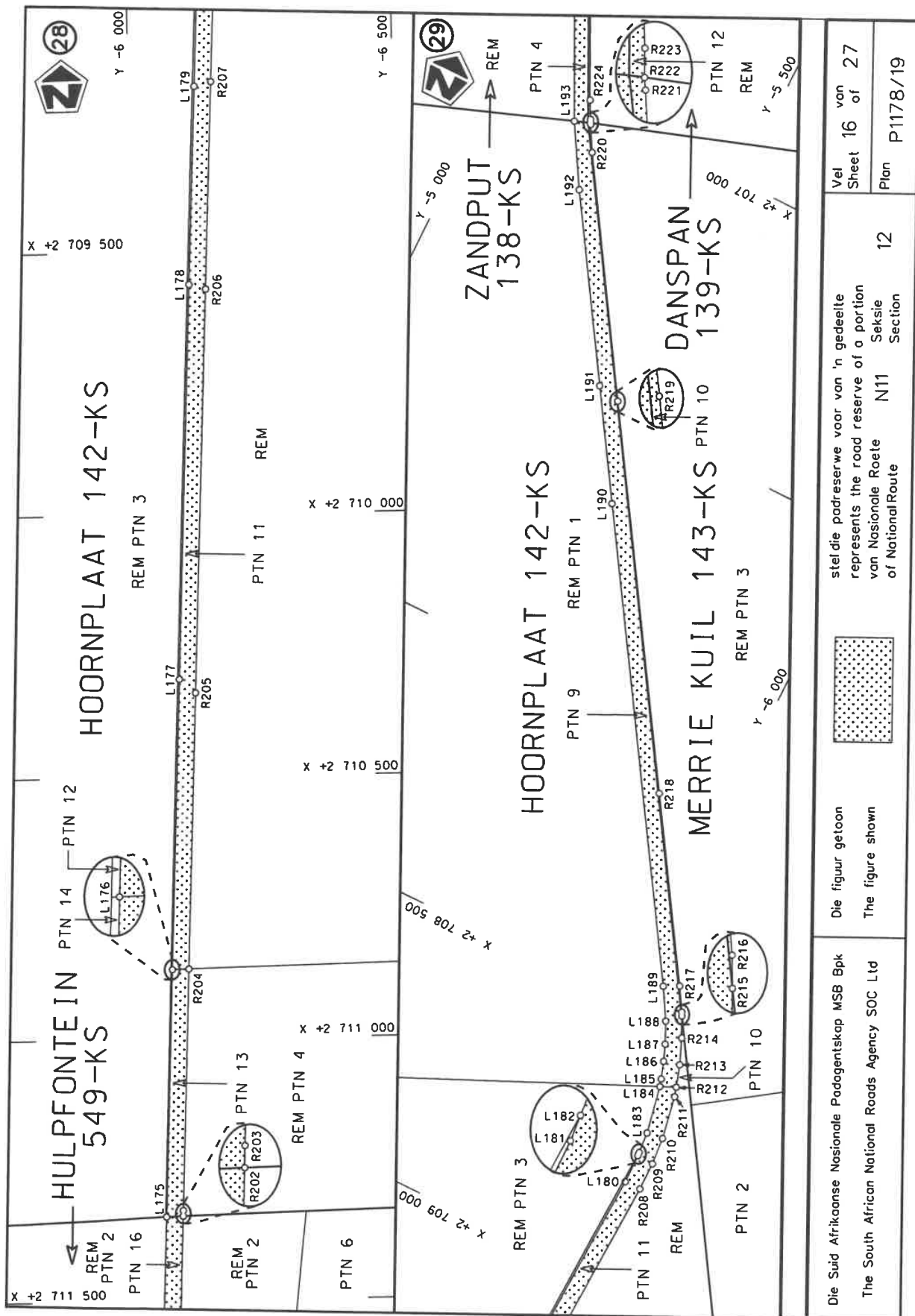




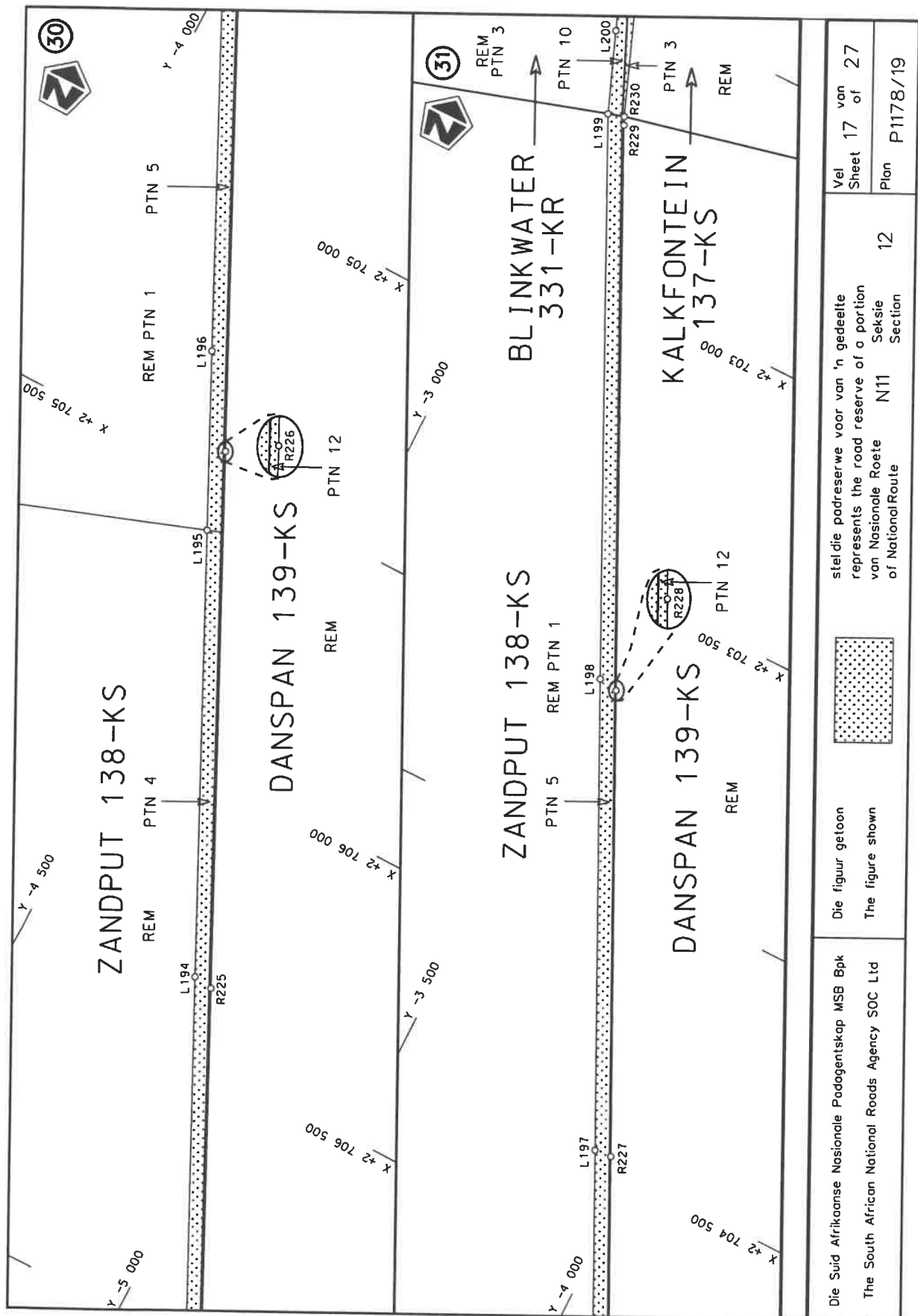


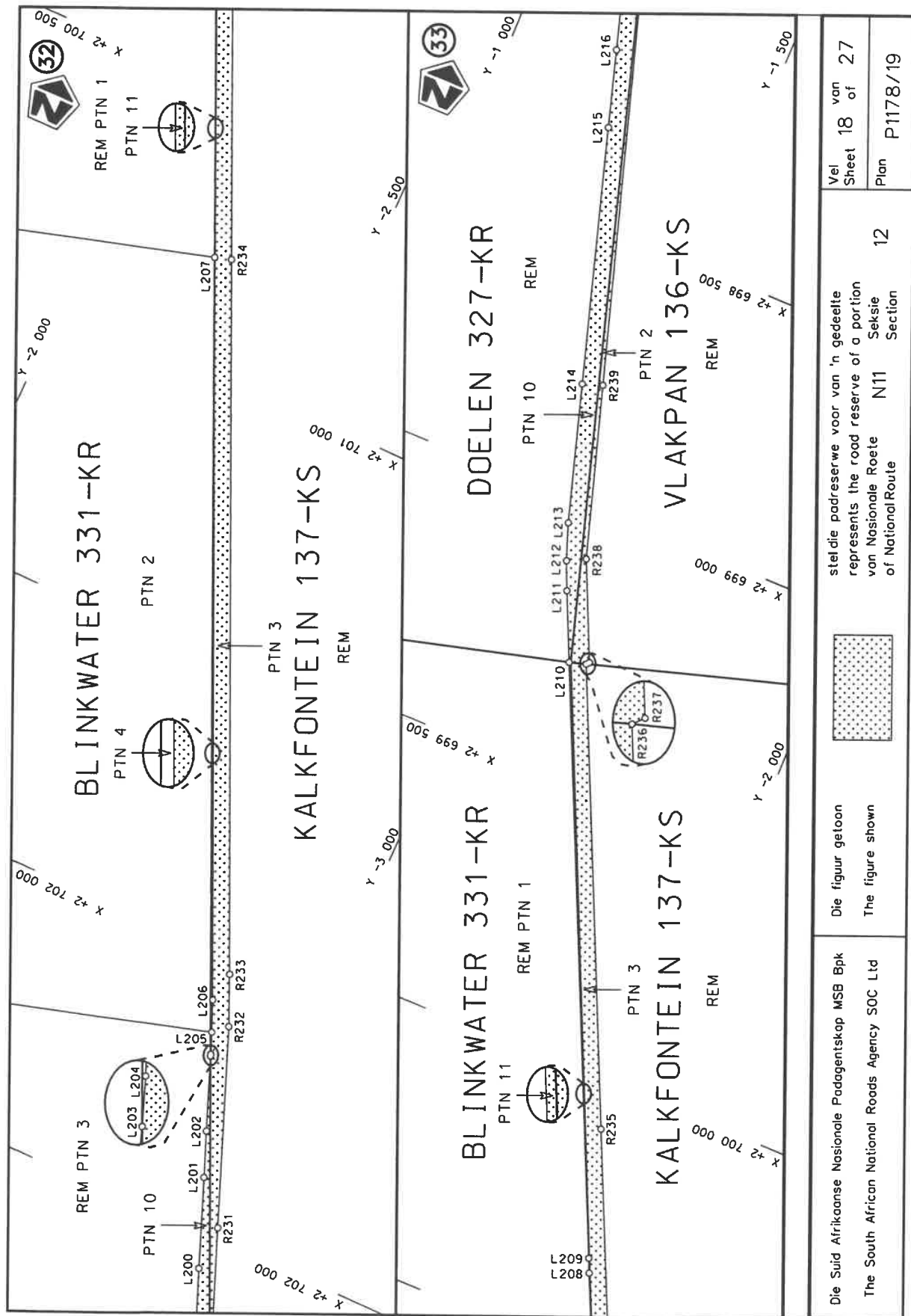


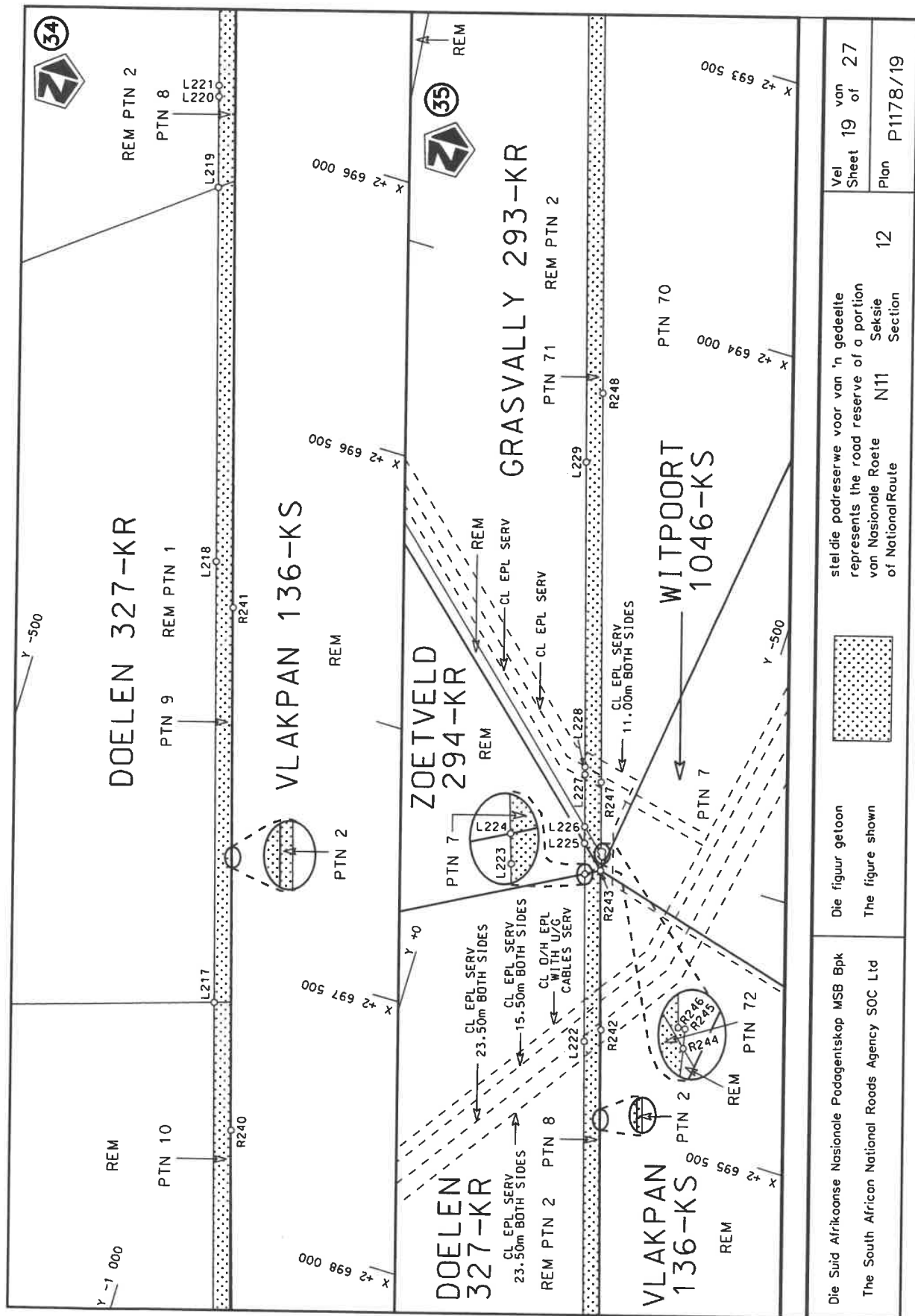


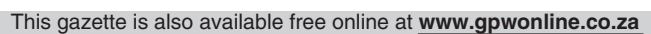


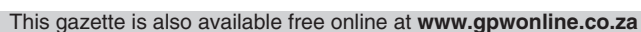














PADRESERWE KOÖRDINATE / ROAD RESERVE CO-ORDINATES							
LINKERKANT/LEFT HAND SIDE				REGTERKANT/RIGHT HAND SIDE			
	Y	X	WG 29°		Y	X	
L1	-28 026.75	2 762 740.12		R1	-28 047.36	2 762 711.13	
L2	-26 366.13	2 762 491.75		R2	-27 626.02	2 762 648.32	
L3	-26 301.64	2 762 468.94		R3	-27 264.27	2 762 594.39	
L4	-26 245.70	2 762 444.28		R4	-26 898.34	2 762 539.84	
L5	-26 006.74	2 762 244.81		R5	-26 373.19	2 762 461.55	
L6	-25 841.76	2 762 108.83		R6	-26 312.31	2 762 438.82	
L7	-25 677.65	2 761 972.43		R7	-26 294.50	2 762 431.02	
L8	-25 666.41	2 761 962.47		R8	-26 281.99	2 762 424.39	
L9	-24 602.90	2 761 082.91		R9	-26 269.62	2 762 417.82	
L10	-24 266.28	2 760 804.12		R10	-26 259.22	2 762 411.37	
L11	-23 824.91	2 760 438.57		R11	-26 246.74	2 762 403.49	
L12	-23 556.60	2 760 216.36		R12	-26 242.39	2 762 400.77	
L13	-23 532.63	2 760 195.98		R13	-26 068.54	2 762 256.82	
L14	-22 704.58	2 759 511.67		R14	-25 739.95	2 761 983.15	
L15	-22 653.45	2 759 463.77		R15	-25 692.32	2 761 943.60	
L16	-22 616.48	2 759 418.35		R16	-25 680.79	2 761 933.87	
L17	-22 548.24	2 759 320.83		R17	-25 474.35	2 761 763.21	
L18	-22 501.84	2 759 259.01		R18	-25 345.28	2 761 656.25	
L19	-22 380.90	2 759 085.20		R19	-25 151.13	2 761 495.37	
L20	-22 306.25	2 758 995.98		R20	-25 146.12	2 761 491.09	
L21	-22 294.34	2 758 982.66		R21	-24 494.64	2 760 954.76	
L22	-21 406.42	2 757 994.44		R22	-24 029.99	2 760 569.58	
L23	-21 277.90	2 757 851.41		R23	-23 579.36	2 760 195.83	
L24	-20 747.97	2 757 261.65		R24	-23 551.03	2 760 172.28	
L25	-20 682.86	2 757 198.31		R25	-23 094.22	2 759 794.26	
L26	-20 604.81	2 757 151.27		R26	-23 042.22	2 759 749.48	
L27	-20 602.29	2 757 149.82		R27	-22 960.58	2 759 665.50	
L28	-20 589.89	2 757 144.21		R28	-22 960.06	2 759 664.95	
L29	-20 554.81	2 757 134.33		R29	-22 942.11	2 759 646.15	
L30	-20 514.74	2 757 122.48		R30	-22 937.34	2 759 640.99	
L31	-20 432.06	2 757 114.23		R31	-22 802.49	2 759 490.52	
L32	-20 018.05	2 757 082.22		R32	-22 789.44	2 759 475.89	
L33	-19 832.05	2 757 068.48		R33	-22 677.14	2 759 350.78	
L34	-19 583.19	2 757 049.38		R34	-22 604.90	2 759 269.48	
L35	-19 454.79	2 757 021.72		R35	-22 538.94	2 759 196.98	
L36	-19 358.29	2 756 989.85		R36	-22 434.90	2 759 087.10	
L37	-18 272.90	2 756 633.99		R37	-22 318.52	2 758 962.56	
L38	-18 159.03	2 756 575.36		R38	-21 421.51	2 757 963.88	
L39	-18 103.17	2 756 522.36		R39	-20 771.89	2 757 240.81	
L40	-18 055.46	2 756 461.06		R40	-20 702.56	2 757 173.41	
L41	-18 018.45	2 756 399.41		R41	-20 659.38	2 757 145.66	
L42	-17 987.23	2 756 318.07		R42	-20 647.01	2 757 137.70	
L43	-17 815.88	2 755 793.66		R43	-20 624.50	2 757 125.58	
L44	-17 747.45	2 755 588.18		R44	-20 574.34	2 757 108.70	
L45	-17 674.28	2 755 402.20		R45	-20 547.24	2 757 099.66	
L46	-17 333.81	2 754 548.69		R46	-20 499.40	2 757 091.91	
L47	-17 330.28	2 754 521.45		R47	-20 446.25	2 757 083.58	
L48	-17 328.72	2 754 509.47		R48	-20 050.56	2 757 053.60	
L49	-17 327.35	2 754 484.84		R49	-20 007.46	2 757 049.94	
L50	-17 321.54	2 754 414.90		R50	-19 858.53	2 757 038.21	
L51	-17 322.28	2 754 394.29		R51	-19 626.08	2 757 019.98	
				Vel Sheet	22	Van of 27	P1178/19

PADRESERWE KOÖRDINATE / ROAD RESERVE CO-ORDINATES									
LINKERKANT/LEFT HAND SIDE					REGTERKANT/RIGHT HAND SIDE				
	Y	X	WG 29°		Y	X			
L52	-17 330.15	2 754 214.96		R52	-19 617.19	2 757 019.51			
L53	-17 331.98	2 754 179.76		R53	-19 578.47	2 757 015.14			
L54	-17 364.41	2 753 543.00		R54	-19 533.82	2 757 010.47			
L55	-17 389.16	2 753 057.62		R55	-19 457.57	2 756 989.32			
L56	-17 433.97	2 752 179.19		R56	-19 362.10	2 756 957.96			
L57	-17 461.07	2 751 655.42		R57	-19 068.24	2 756 862.17			
L58	-17 473.38	2 751 414.24		R58	-18 378.57	2 756 637.96			
L59	-17 492.78	2 751 026.96		R59	-18 346.12	2 756 627.28			
L60	-17 514.38	2 750 599.68		R60	-18 272.34	2 756 600.66			
L61	-17 535.82	2 750 168.08		R61	-18 209.00	2 756 567.72			
L62	-17 552.11	2 749 845.82		R62	-18 145.26	2 756 518.92			
L63	-17 578.74	2 749 306.98		R63	-18 089.40	2 756 456.08			
L64	-17 599.42	2 748 890.10		R64	-18 046.68	2 756 385.58			
L65	-17 629.30	2 748 292.65		R65	-18 017.08	2 756 307.78			
L66	-17 629.59	2 748 287.97		R66	-17 963.03	2 756 142.19			
L67	-17 642.39	2 748 025.73		R67	-17 782.28	2 755 590.84			
L68	-17 662.78	2 747 595.77		R68	-17 776.96	2 755 576.99			
L69	-17 655.64	2 747 503.94		R69	-17 769.34	2 755 557.66			
L70	-17 642.99	2 747 445.00		R70	-17 505.84	2 754 897.80			
L71	-17 628.41	2 747 398.72		R71	-17 385.18	2 754 594.12			
L72	-17 392.65	2 746 742.30		R72	-17 370.00	2 754 544.61			
L73	-17 205.71	2 746 221.31		R73	-17 358.16	2 754 480.82			
L74	-17 017.77	2 745 702.08		R74	-17 352.63	2 754 414.75			
L75	-16 848.71	2 745 234.97		R75	-17 362.65	2 754 215.71			
L76	-16 680.50	2 744 768.55		R76	-17 371.90	2 754 032.03			
L77	-16 440.56	2 744 101.12		R77	-17 410.87	2 753 259.95			
L78	-16 168.58	2 743 346.89		R78	-17 446.14	2 752 561.82			
L79	-16 009.12	2 742 903.15		R79	-17 491.28	2 751 660.48			
L80	-15 941.59	2 742 714.91		R80	-17 492.28	2 751 641.71			
L81	-15 936.81	2 742 700.38		R81	-17 492.30	2 751 641.42			
L82	-15 628.36	2 741 910.85		R82	-17 500.71	2 751 483.54			
L83	-15 444.37	2 741 439.95		R83	-17 503.75	2 751 421.72			
L84	-15 276.00	2 741 008.86		R84	-17 523.98	2 751 026.97			
L85	-15 027.73	2 740 373.14		R85	-17 545.36	2 750 601.47			
L86	-14 825.99	2 739 855.62		R86	-17 575.85	2 749 990.55			
L87	-14 655.64	2 739 419.41		R87	-17 606.75	2 749 369.06			
L88	-14 433.06	2 738 849.24		R88	-17 630.57	2 748 886.34			
L89	-14 335.15	2 738 594.15		R89	-17 657.96	2 748 336.96			
L90	-14 331.34	2 738 596.35		R90	-17 661.13	2 748 271.88			
L91	-14 136.93	2 738 058.95		R91	-17 673.55	2 748 025.28			
L92	-13 930.90	2 737 491.23		R92	-17 693.95	2 747 595.09			
L93	-13 697.30	2 736 845.36		R93	-17 693.86	2 747 544.96			
L94	-13 701.16	2 736 843.42		R94	-17 693.76	2 747 491.70			
L95	-13 536.66	2 736 387.28		R95	-17 693.75	2 747 488.86			
L96	-13 394.29	2 735 993.15		R96	-17 543.60	2 747 069.63			
L97	-13 148.09	2 735 311.39		R97	-17 237.57	2 746 219.27			
L98	-12 881.82	2 734 573.25		R98	-17 046.88	2 745 689.50			
L99	-12 829.22	2 734 428.64		R99	-16 865.26	2 745 184.61			
L100	-12 559.05	2 733 749.99		R100	-16 707.69	2 744 747.79			
L101	-12 326.53	2 733 167.90		R101	-16 470.84	2 744 089.95			
L102	-12 047.95	2 732 470.16		R102	-16 240.56	2 743 449.65			
Vel Sheet 23					Van of 27		P1178/19		

PADRESERWE KOÖRDINATE / ROAD RESERVE CO-ORDINATES									
LINKERKANT/LEFT HAND SIDE					REGTERKANT/RIGHT HAND SIDE				
	Y	X	WG 29°			Y	X		
L103	-11 778.33	2 731 794.64			R103	-16 096.05	2 743 048.36		
L104	-11 496.85	2 731 090.31			R104	-15 974.28	2 742 712.15		
L105	-11 357.31	2 730 741.44			R105	-15 971.06	2 742 704.56		
L106	-11 148.22	2 730 217.54			R106	-15 863.36	2 742 427.76		
L107	-11 124.61	2 730 152.15			R107	-15 684.38	2 741 968.71		
L108	-10 834.20	2 728 908.17			R108	-15 488.09	2 741 465.48		
L109	-10 699.54	2 728 330.30			R109	-15 323.91	2 741 046.08		
L110	-10 627.56	2 728 019.47			R110	-15 048.65	2 740 341.10		
L111	-10 545.07	2 727 662.94			R111	-14 835.27	2 739 794.30		
L112	-10 382.05	2 726 961.06			R112	-14 675.85	2 739 385.82		
L113	-10 270.00	2 726 479.90			R113	-14 496.57	2 738 926.35		
L114	-10 260.81	2 726 446.65			R114	-14 362.23	2 738 578.77		
L115	-10 249.77	2 726 414.24			R115	-14 211.86	2 738 165.18		
L116	-10 205.11	2 726 322.96			R116	-14 171.70	2 738 054.72		
L117	-10 198.32	2 726 309.75			R117	-13 969.92	2 737 495.45		
L118	-9 889.46	2 725 782.65			R118	-13 729.63	2 736 829.21		
L119	-9 338.87	2 724 842.82			R119	-13 571.58	2 736 392.28		
L120	-8 529.51	2 723 463.39			R120	-13 436.39	2 736 017.55		
L121	-8 220.01	2 722 934.79			R121	-13 167.95	2 735 273.71		
L122	-8 196.18	2 722 833.30			R122	-12 909.32	2 734 559.20		
L123	-8 182.60	2 722 775.39			R123	-12 880.11	2 734 477.44		
L124	-8 177.53	2 722 753.87			R124	-12 863.00	2 734 429.53		
L125	-8 176.67	2 722 703.10			R125	-12 590.45	2 733 743.81		
L126	-8 175.71	2 722 650.18			R126	-12 582.16	2 733 729.28		
L127	-8 180.44	2 722 591.80			R127	-12 353.56	2 733 153.88		
L128	-8 199.87	2 722 510.13			R128	-12 103.74	2 732 526.28		
L129	-8 206.52	2 722 507.28			R129	-11 805.86	2 731 780.22		
L130	-8 249.21	2 722 322.06			R130	-11 625.60	2 731 328.83		
L131	-8 271.18	2 722 225.36			R131	-11 176.50	2 730 204.86		
L132	-8 295.82	2 722 104.31			R132	-11 160.63	2 730 161.54		
L133	-8 300.25	2 722 081.78			R133	-11 154.82	2 730 143.93		
L134	-8 305.52	2 722 080.69			R134	-11 150.65	2 730 131.00		
L135	-8 213.96	2 721 623.01			R135	-10 861.13	2 728 887.90		
L136	-8 202.30	2 721 587.28			R136	-10 745.50	2 728 389.30		
L137	-8 187.70	2 721 555.05			R137	-10 745.59	2 728 387.97		
L138	-8 092.51	2 721 046.01			R138	-10 655.40	2 728 000.29		
L139	-8 024.40	2 720 684.13			R139	-10 572.56	2 727 644.03		
L140	-7 965.09	2 720 378.49			R140	-10 418.46	2 726 981.64		
L141	-7 892.62	2 720 005.24			R141	-10 299.62	2 726 470.16		
L142	-7 836.05	2 719 709.87			R142	-10 276.69	2 726 399.80		
L143	-7 823.23	2 719 646.04			R143	-10 276.07	2 726 397.67		
L144	-7 700.37	2 719 049.11			R144	-10 275.66	2 726 396.25		
L145	-7 598.79	2 718 567.32			R145	-10 266.73	2 726 374.57		
L146	-7 440.31	2 717 498.76			R146	-10 202.19	2 726 254.37		
L147	-7 369.59	2 716 945.44			R147	-9 913.65	2 725 763.31		
L148	-7 318.89	2 716 526.42			R148	-9 357.51	2 724 813.41		
L149	-7 308.98	2 716 387.61			R149	-8 542.69	2 723 424.08		
L150	-7 276.90	2 715 859.65			R150	-8 283.39	2 722 982.00		
L151	-7 259.21	2 715 554.09			R151	-8 280.61	2 722 975.93		
L152	-7 237.88	2 715 186.75			R152	-8 246.35	2 722 901.20		
L153	-7 222.53	2 714 897.81			R153	-8 235.57	2 722 866.37		
					<div> <div>Vel</div> <div>24</div> <div>Van</div> <div>27</div> <div>Sheet</div> <div>of</div> <div>P1178/19</div> </div>				

PADRESERVE KOÖRDINATE / ROAD RESERVE CO-ORDINATES									
LINKERKANT/LEFT HAND SIDE					REGTERKANT/RIGHT HAND SIDE				
	Y	X	WG 29°		Y	X			
L154	-7 219.85	2 714 848.31		R154	-8 211.78	2 722 763.05			
L155	-7 216.76	2 714 815.05		R155	-8 207.97	2 722 680.07			
L156	-7 209.17	2 714 767.58		R156	-8 212.16	2 722 616.76			
L157	-7 198.16	2 714 719.67		R157	-8 213.30	2 722 608.68			
L158	-7 183.32	2 714 674.38		R158	-8 239.65	2 722 493.08			
L159	-7 165.89	2 714 633.08		R159	-8 319.01	2 722 145.62			
L160	-7 126.26	2 714 556.60		R160	-8 330.86	2 722 075.46			
L161	-7 035.86	2 714 383.79		R161	-8 243.98	2 721 614.00			
L162	-6 736.37	2 713 815.53		R162	-8 226.32	2 721 555.20			
L163	-6 736.16	2 713 814.98		R163	-8 180.10	2 721 346.34			
L164	-6 580.25	2 713 517.44		R164	-8 124.69	2 721 047.05			
L165	-6 574.42	2 713 508.62		R165	-8 054.90	2 720 684.54			
L166	-6 429.94	2 713 232.81		R166	-7 986.32	2 720 326.38			
L167	-6 194.45	2 712 784.22		R167	-7 863.91	2 719 688.76			
L168	-6 072.93	2 712 553.30		R168	-7 843.36	2 719 581.60			
L169	-6 030.15	2 712 463.42		R169	-7 827.77	2 719 505.14			
L170	-6 012.29	2 712 410.15		R170	-7 719.93	2 718 992.72			
L171	-5 999.10	2 712 354.94		R171	-7 627.74	2 718 554.67			
L172	-5 988.48	2 712 282.76		R172	-7 470.81	2 717 486.54			
L173	-5 987.84	2 712 215.42		R173	-7 400.67	2 716 932.43			
L174	-6 000.09	2 711 941.98		R174	-7 353.66	2 716 550.61			
L175	-6 027.51	2 711 339.04		R175	-7 345.02	2 716 451.05			
L176	-6 048.88	2 710 867.24		R176	-7 340.28	2 716 375.09			
L177	-6 074.05	2 710 313.58		R177	-7 311.13	2 715 865.74			
L178	-6 108.06	2 709 561.77		R178	-7 291.60	2 715 541.24			
L179	-6 125.04	2 709 185.00		R179	-7 270.17	2 715 177.13			
L180	-6 141.97	2 708 808.49		R180	-7 255.00	2 714 914.57			
L181	-6 141.82	2 708 753.01		R181	-7 251.52	2 714 857.07			
L182	-6 141.28	2 708 746.48		R182	-7 246.94	2 714 804.79			
L183	-6 138.24	2 708 706.64		R183	-7 239.22	2 714 757.74			
L184	-6 121.15	2 708 616.20		R184	-7 227.06	2 714 707.55			
L185	-6 116.95	2 708 602.08		R185	-7 210.80	2 714 659.21			
L186	-6 106.29	2 708 569.90		R186	-7 191.15	2 714 612.62			
L187	-6 094.46	2 708 539.31		R187	-7 076.16	2 714 393.23			
L188	-6 075.97	2 708 499.37		R188	-7 069.26	2 714 378.83			
L189	-6 042.35	2 708 441.20		R189	-6 768.96	2 713 810.09			
L190	-5 549.64	2 707 657.98		R190	-6 613.00	2 713 513.08			
L191	-5 429.61	2 707 466.91		R191	-6 457.97	2 713 219.13			
L192	-5 230.05	2 707 149.12		R192	-6 220.94	2 712 768.13			
L193	-5 164.14	2 707 036.08		R193	-6 099.77	2 712 537.46			
L194	-4 834.32	2 706 364.06		R194	-6 076.79	2 712 492.74			
L195	-4 460.47	2 705 598.85		R195	-6 056.82	2 712 445.84			
L196	-4 310.37	2 705 292.45		R196	-6 041.43	2 712 399.10			
L197	-3 915.99	2 704 484.87		R197	-6 030.24	2 712 350.59			
L198	-3 520.89	2 703 677.30		R198	-6 019.88	2 712 277.31			
L199	-3 049.24	2 702 710.26		R199	-6 019.35	2 712 267.46			
L200	-2 991.52	2 702 562.68		R200	-6 019.50	2 712 209.05			
L201	-2 929.12	2 702 400.80		R201	-6 030.74	2 711 956.94			
L202	-2 896.94	2 702 318.50		R202	-6 058.99	2 711 338.26			
L203	-2 845.84	2 702 185.38		R203	-6 059.33	2 711 327.65			
L204	-2 844.45	2 702 181.62		R204	-6 080.23	2 710 866.44			
					Vel Sheet	25	Van of	27	P1178/19



PADRESERWE KOÖRDINATE / ROAD RESERVE CO-ORDINATES							
LINKERKANT/LEFT HAND SIDE				REGTERKANT/RIGHT HAND SIDE			
	Y	X	WG 29°		Y	X	
L205	-2 829.00	2 702 142.66		R205	-6 104.10	2 710 340.07	
L206	-2 805.41	2 702 085.99		R206	-6 138.94	2 709 571.25	
L207	-2 228.18	2 700 798.37		R207	-6 156.56	2 709 176.77	
L208	-2 026.73	2 700 348.91		R208	-6 173.14	2 708 808.67	
L209	-2 015.38	2 700 323.08		R209	-6 173.32	2 708 755.14	
L210	-1 551.21	2 699 287.84		R210	-6 169.35	2 708 703.29	
L211	-1 495.50	2 699 163.70		R211	-6 154.91	2 708 621.44	
L212	-1 473.32	2 699 111.27		R212	-6 149.70	2 708 603.75	
L213	-1 449.14	2 699 043.08		R213	-6 136.81	2 708 562.24	
L214	-1 373.33	2 698 789.51		R214	-6 117.68	2 708 514.63	
L215	-1 233.67	2 698 320.61		R215	-6 099.53	2 708 477.10	
L216	-1 191.61	2 698 178.99		R216	-6 095.98	2 708 469.99	
L217	-1 019.66	2 697 602.56		R217	-6 070.43	2 708 427.08	
L218	- 780.18	2 696 796.87		R218	-5 873.58	2 708 114.30	
L219	- 577.28	2 696 114.40		R219	-5 473.20	2 707 477.97	
L220	- 528.13	2 695 948.84		R220	-5 220.59	2 707 074.60	
L221	- 522.14	2 695 928.63		R221	-5 194.69	2 707 028.23	
L222	- 354.49	2 695 364.59		R222	-5 193.17	2 707 025.68	
L223	- 263.36	2 695 058.67		R223	-5 190.18	2 707 019.40	
L224	- 263.22	2 695 058.24		R224	-5 173.07	2 706 987.08	
L225	- 245.74	2 695 002.62		R225	-4 870.92	2 706 369.39	
L226	- 236.94	2 694 972.23		R226	-4 421.44	2 705 449.83	
L227	- 208.78	2 694 876.75		R227	-3 948.17	2 704 481.94	
L228	- 204.62	2 694 863.00		R228	-3 557.69	2 703 683.13	
L229	- 38.65	2 694 306.39		R229	-3 086.20	2 702 715.68	
L230	339.60	2 693 038.48		R230	-3 079.36	2 702 701.07	
L231	529.63	2 692 401.32		R231	-2 992.53	2 702 477.83	
L232	638.23	2 692 035.86		R232	-2 853.87	2 702 119.69	
L233	652.38	2 691 985.92		R233	-2 814.43	2 702 028.51	
L234	655.37	2 691 976.03		R234	-2 258.54	2 700 789.20	
L235	678.32	2 691 872.36		R235	-1 943.52	2 700 086.81	
L236	689.23	2 691 805.82		R236	-1 582.08	2 699 278.78	
L237	694.97	2 691 759.52		R237	-1 586.75	2 699 273.83	
L238	699.72	2 691 712.04		R238	-1 506.63	2 699 093.92	
L239	721.71	2 691 477.51		R239	-1 410.44	2 698 776.80	
L240	785.42	2 690 805.30		R240	-1 120.77	2 697 827.18	
L241	833.66	2 690 295.62		R241	- 836.25	2 696 871.57	
L242	877.14	2 689 897.59		R242	- 378.99	2 695 334.40	
L243	928.53	2 689 597.25		R243	- 290.33	2 695 043.53	
L244	975.35	2 689 324.06		R244	- 285.55	2 695 017.21	
L245	980.48	2 689 293.47		R245	- 283.72	2 695 008.03	
L246	994.73	2 689 201.41		R246	- 280.29	2 695 008.38	
L247	1 011.37	2 689 105.23		R247	- 242.70	2 694 881.84	
L248	1 012.35	2 689 099.61		R248	- 31.06	2 694 171.68	
L249	1 043.41	2 688 921.66		R249	304.48	2 693 046.29	
L250	1 064.12	2 688 826.52		R250	499.12	2 692 392.86	
L251	1 097.99	2 688 744.08		R251	605.14	2 692 038.34	
L252	1 233.44	2 688 465.87		R252	635.10	2 691 926.09	
L253	1 424.08	2 688 076.62		R253	651.39	2 691 844.17	
L254	1 458.57	2 688 006.32		R254	665.02	2 691 745.06	
L255	1 654.37	2 687 605.15		R255	689.65	2 691 485.47	
				Vel Sheet	26	Van of 27	P1178/19



This gazette is also available free online at [www.gpwonline.co.za](http://www.gpwonline.co.za)