
GOVERNMENT NOTICES • GOEWERMENTSKENNISGEWINGS

DEPARTMENT OF TRANSPORT

NO. 6431

11 July 2025

**THE SOUTH AFRICAN NATIONAL ROADS
AGENCY SOC LIMITED**Registration No: 1998/009584/30

No.-----

Date.....

DECLARATION AMENDMENT OF NATIONAL ROAD R72 SECTION 4

AMENDMENT OF DECLARATION No. 306 OF 2012.

By virtue of section 40(1)(b) of the South African National Roads Agency Limited and the National Roads Act 1998 (Act No. 7 of 1998), I hereby amend Declaration No. 306 of 2012 by substituting paragraph II of the Schedule, being the descriptive declaration of the route from its intersection with Provincial Road R345 up to East London, with the accompanying sheets 1 to 33 of Plan No. P1209/20.

(National Road R72 Section 4: R345 Intersection – East London)
MINISTER OF TRANSPORT

DEPARTEMENT VAN VERVOER

NO. 6431

11 Julie 2025

**DIE SUID-AFRIKAANSE NASIONALE
PADAGENTSKAP MSB BEPERK**Registrasie No: 1998/009584/30

No.-----

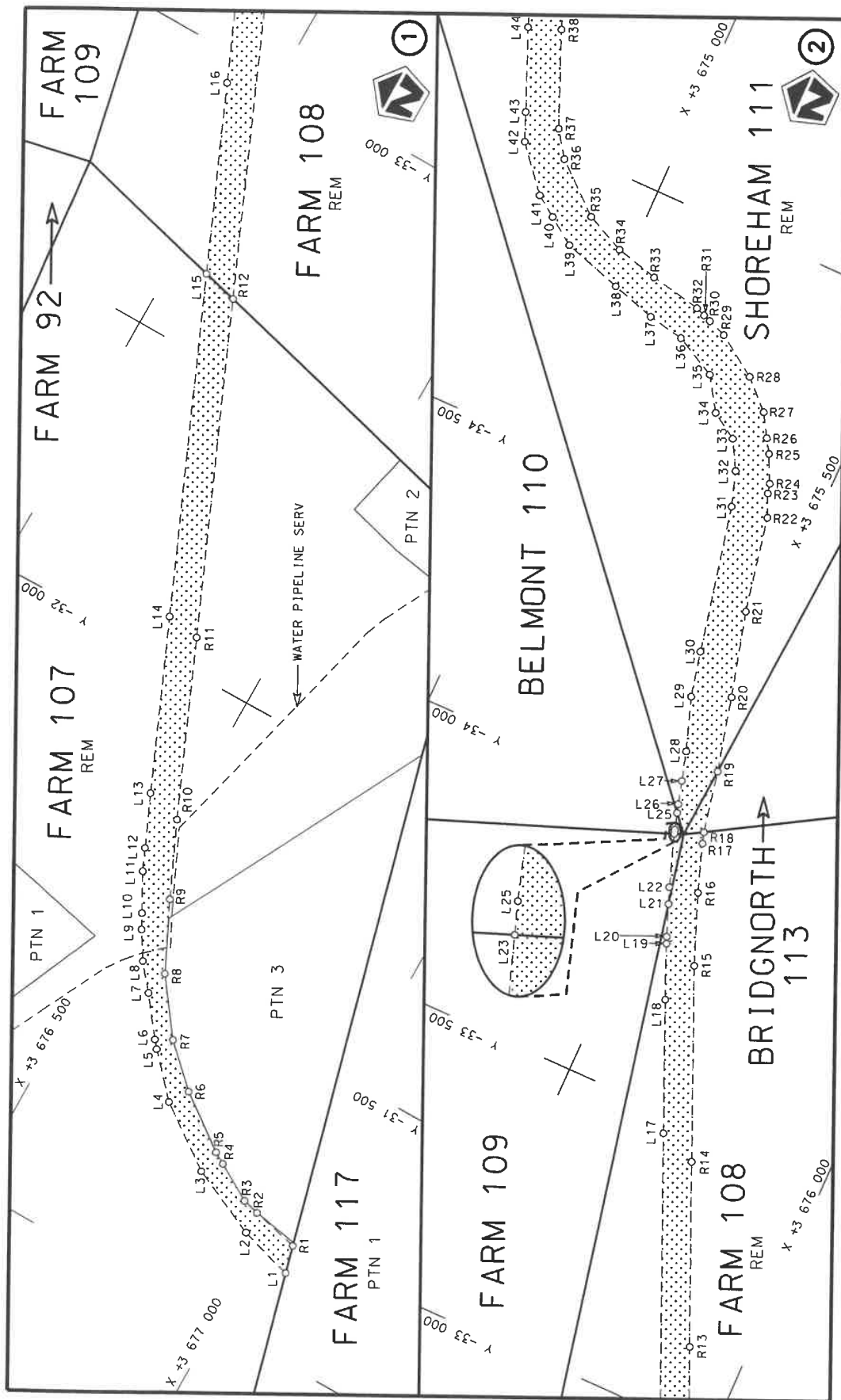
Datum.....

VERKLARING WYSIGING VAN NASIONALE PAD R72 SEKSIE 4

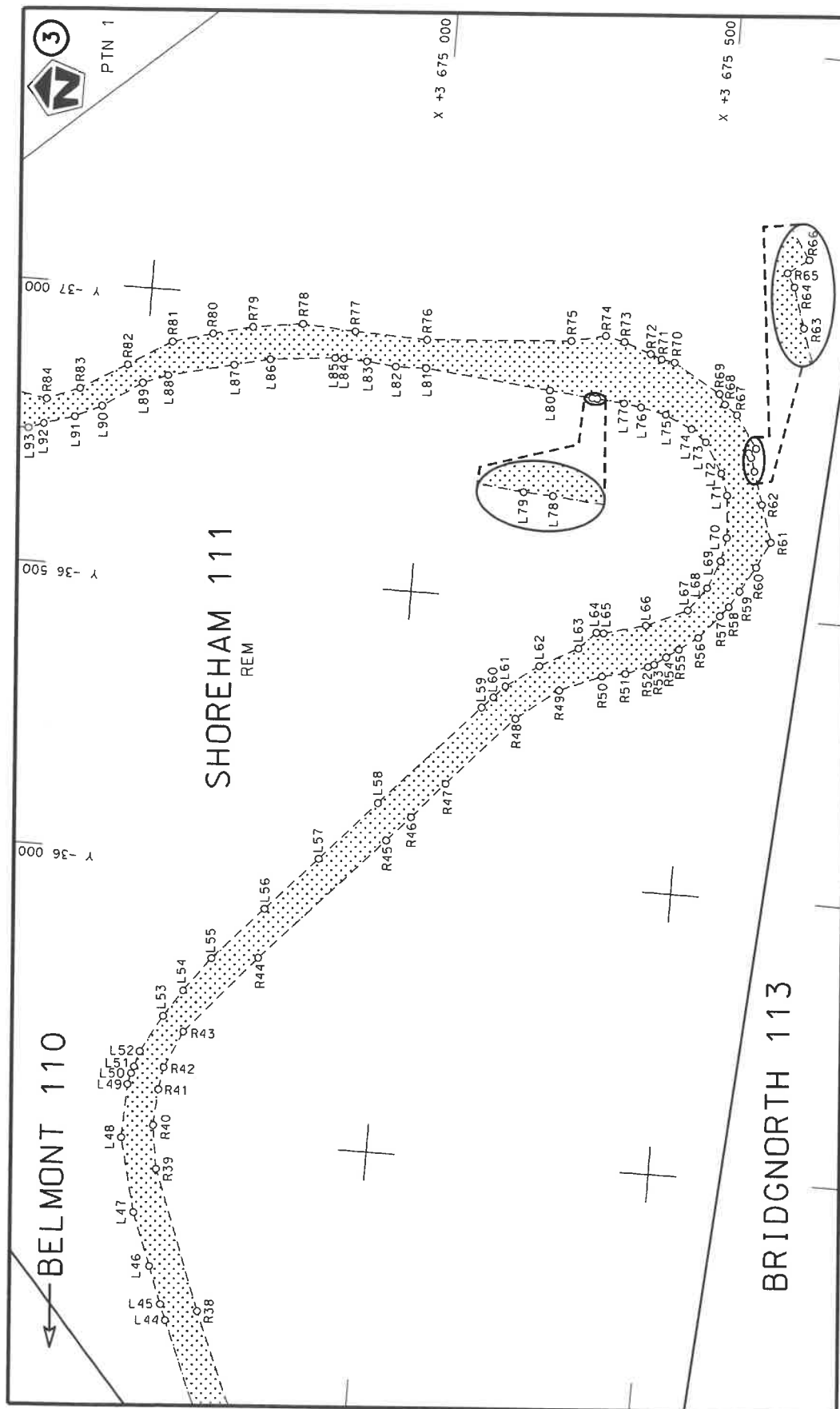
WYSIGING VAN VERKLARING No. 306 VAN 2012.

Kragtens Artikel 40(1)(b) van die Suid-Afrikaanse Nasionale Padagentskap Beperk en Nasionale Paaie Wet 1998 (Wet No. 7 van 1998), wysig ek hiermee Verklaring No. 306 van 2012 deur paragraaf II van die Skedule te vervang, synde die gedeelte van die beskrywende verklaring van die pad vanaf die interseksie met Provinsiale Pad R345 tot by Oos London, met bygaande velle 1 tot 33 van Plan No. P1209/20.

(Nasionale Pad R72 Seksie 4: R345 Interseksie – Oos London)**MINISTER VAN VERVOER**

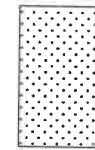


Die Suid Afrikaanse Nasionale Padagentskap MSB Bpk The South African National Roads Agency SOC Ltd	Die figuur getoon The figure shown	<div data-bbox="1289 1081 1374 1227" data-label="Image"> </div> steldie padreserwe voor van 'n gedeelte represents the road reserve of a portion van Nasionale Roete R72 of National Route	Vel 1 van 33 Sheet 1 of 33 Plan P1209/20
---	---------------------------------------	---	--



Die Suid Afrikaanse Nasionale Padagentskap MSB Bpk
The South African National Roads Agency SOC Ltd

Die figuur getoon
The figure shown

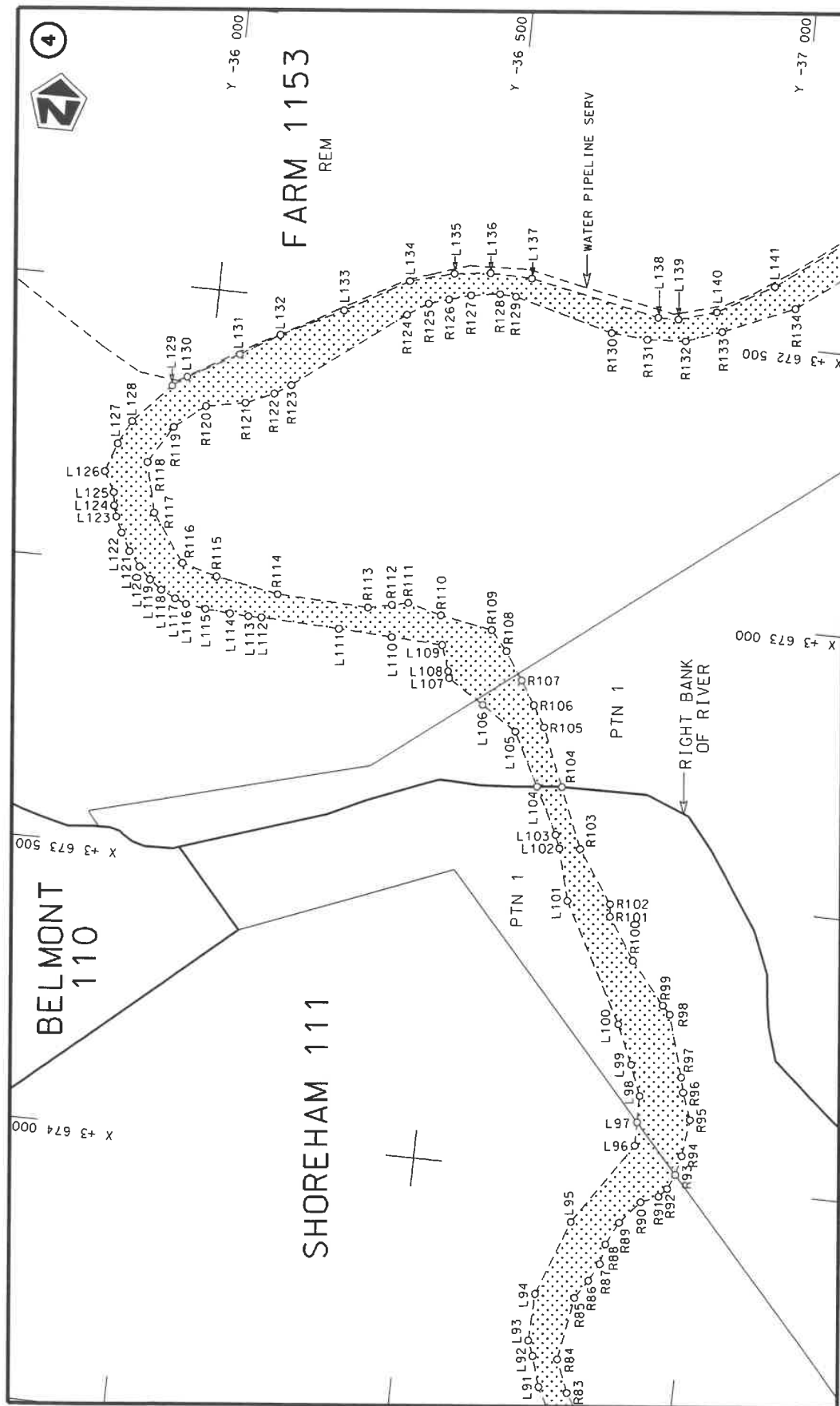


steldie padreserwe voor van 'n gedeelte
represents the road reserve of a portion
van Nasionale Roete R72
of National Route

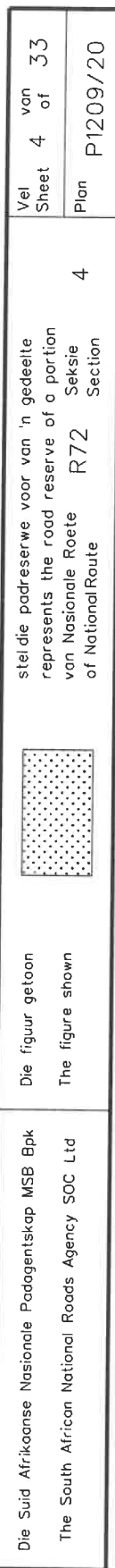
4

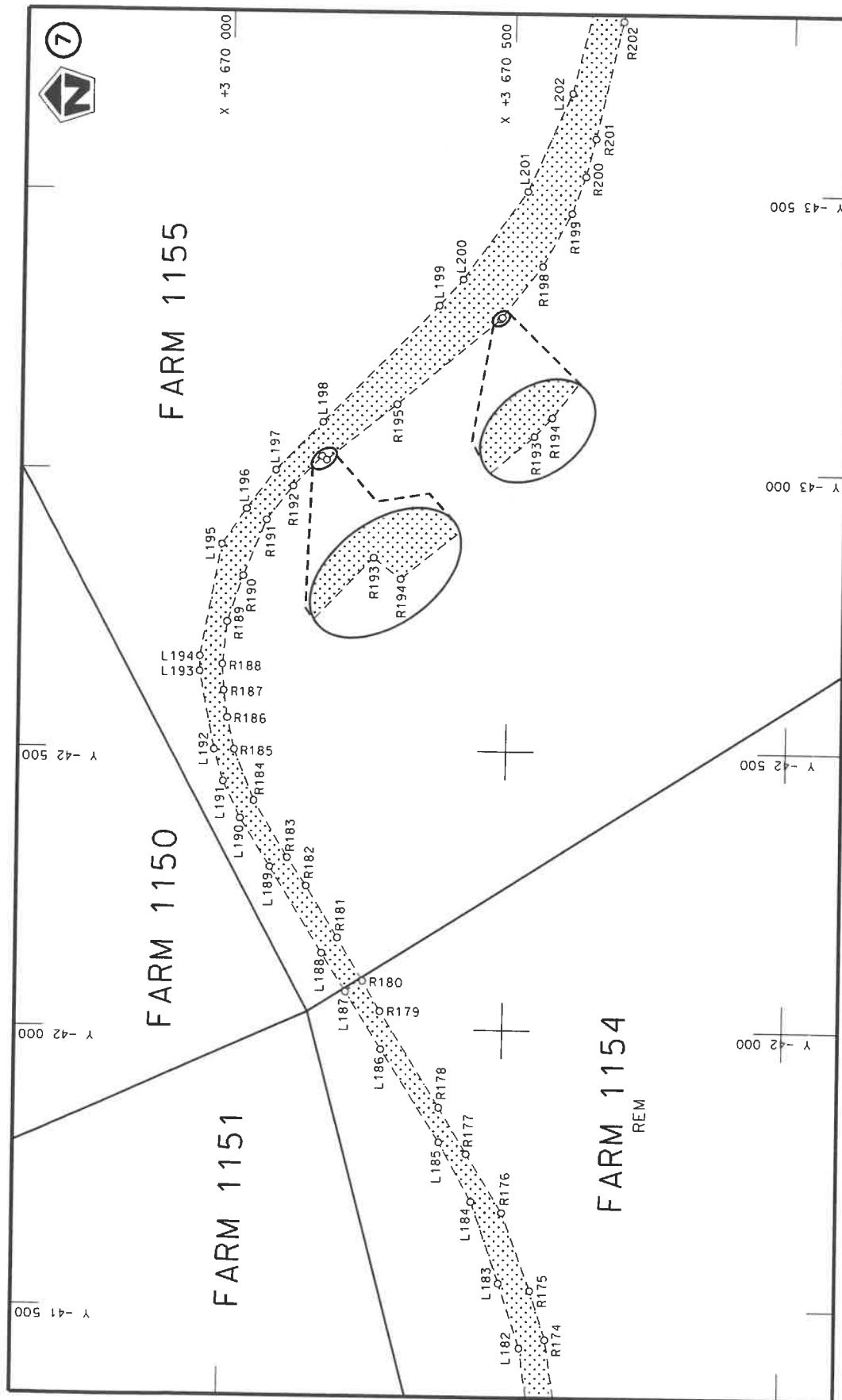
Plan P1209/20

Vel Sheet 2 of 33

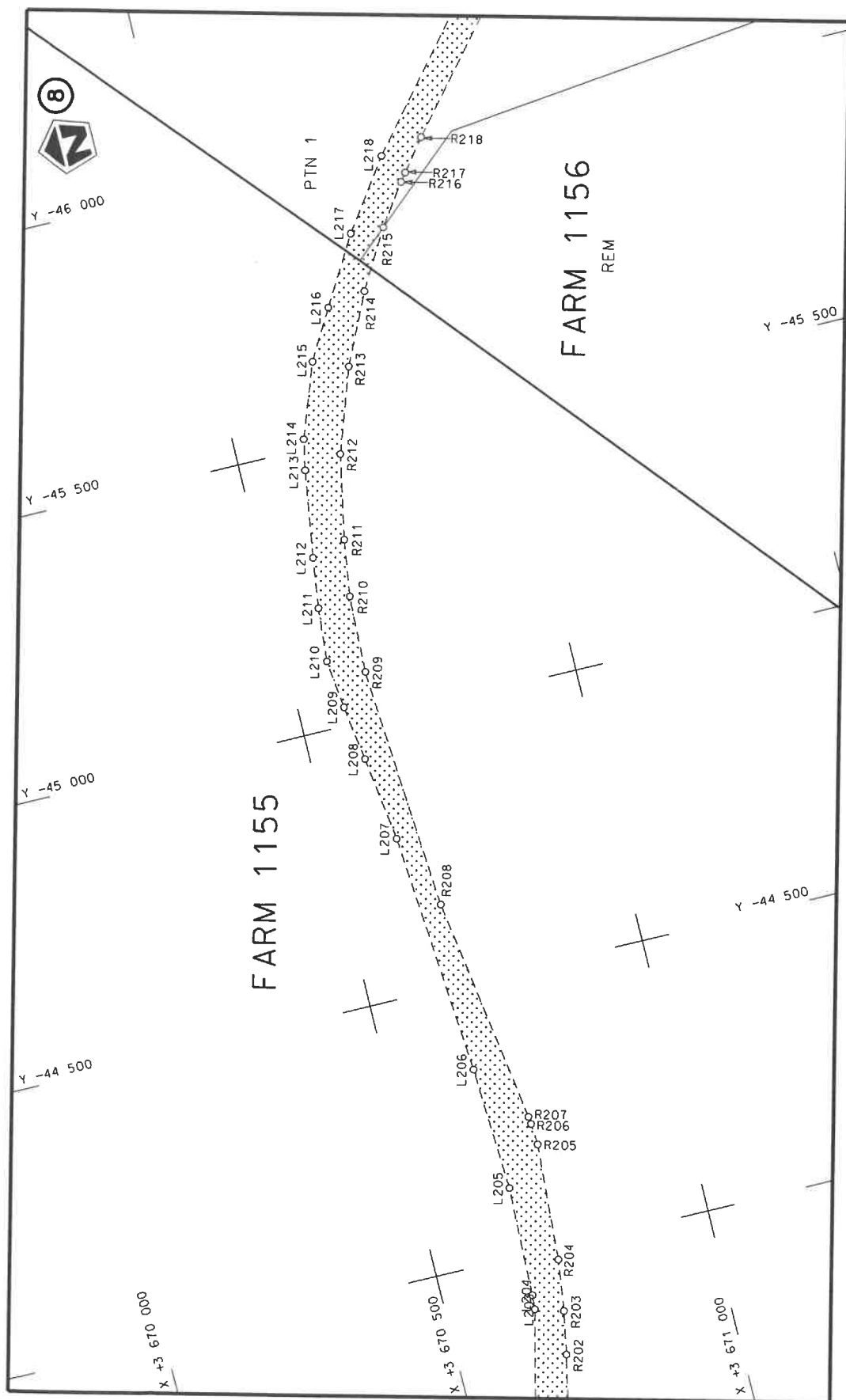



Die Suid Afrikaanse Nasionale Padagentskap MSB Bpk The South African National Roads Agency SOC Ltd	Die figuur getoon The figure shown		stel die padreserwe voor van 'n gedeelte represents the road reserve of a portion van Nasionale Roete R72 Sektie of National Route of Section		Vel Sheet	3 of	33
			4		Plan	P1209/20	

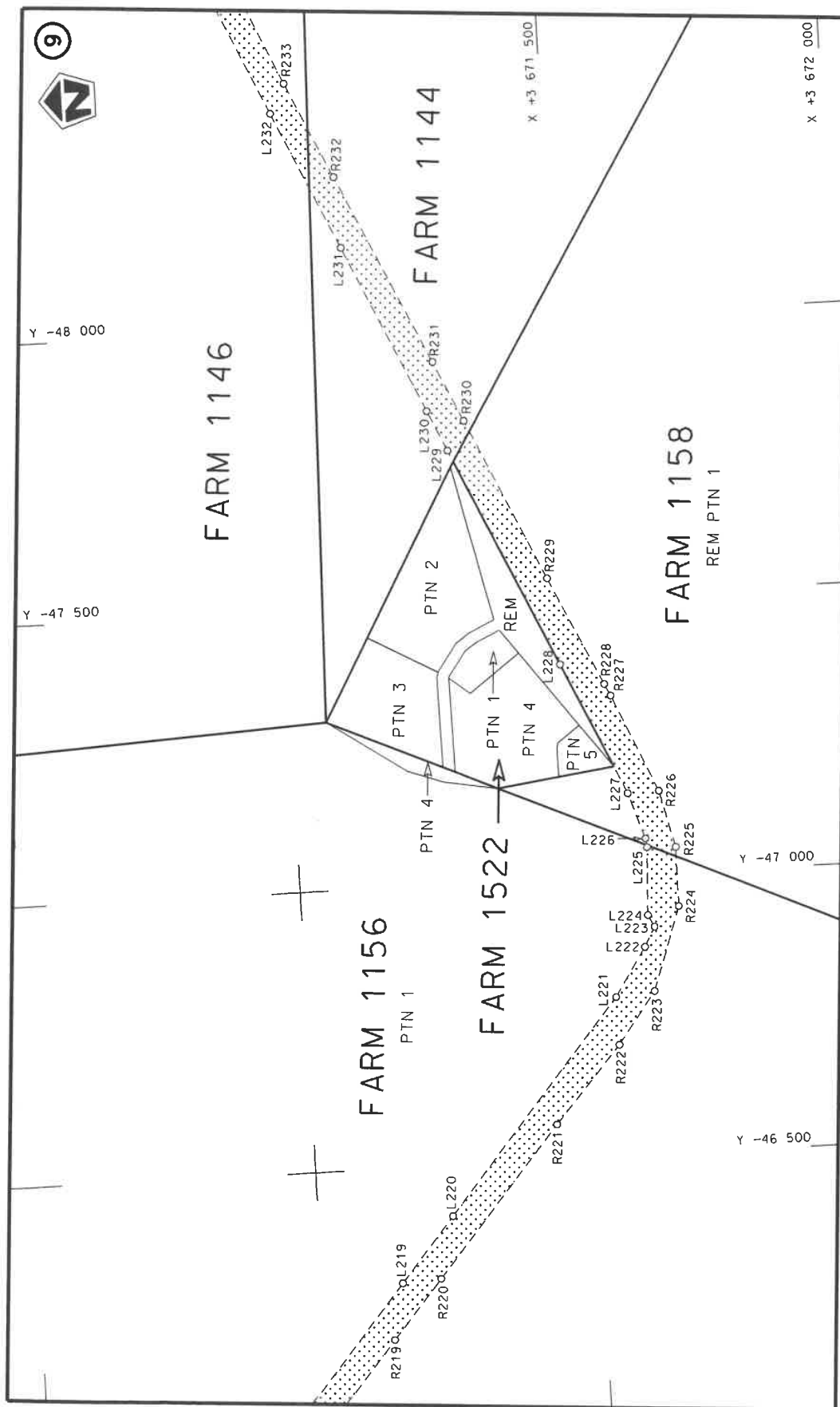




Die Suid Afrikaanse Nasionale Padagentskap MSB Bpk The South African National Roads Agency SOC Ltd	Die figuur getoon The figure shown	stel die padreserwe voor van 'n gedeelte represents the road reserve of a portion van Nasionale Roete R72 of National Route	4
Vel Sheet 5 of 33	Plan P1209/20	4	4



Die Suid Afrikaanse Nasionale Padagentskap MSB Bpk The South African National Roads Agency SOC Ltd	Die figuur getoon The figure shown		steldie padreserwe voor van 'n gedeelte represents the road reserve of a portion van Nasionale Roete R72 of National Route R72 Section 4	Vel Sheet 6 of 33 Plan P1209/20
---	---------------------------------------	---	---	---------------------------------------



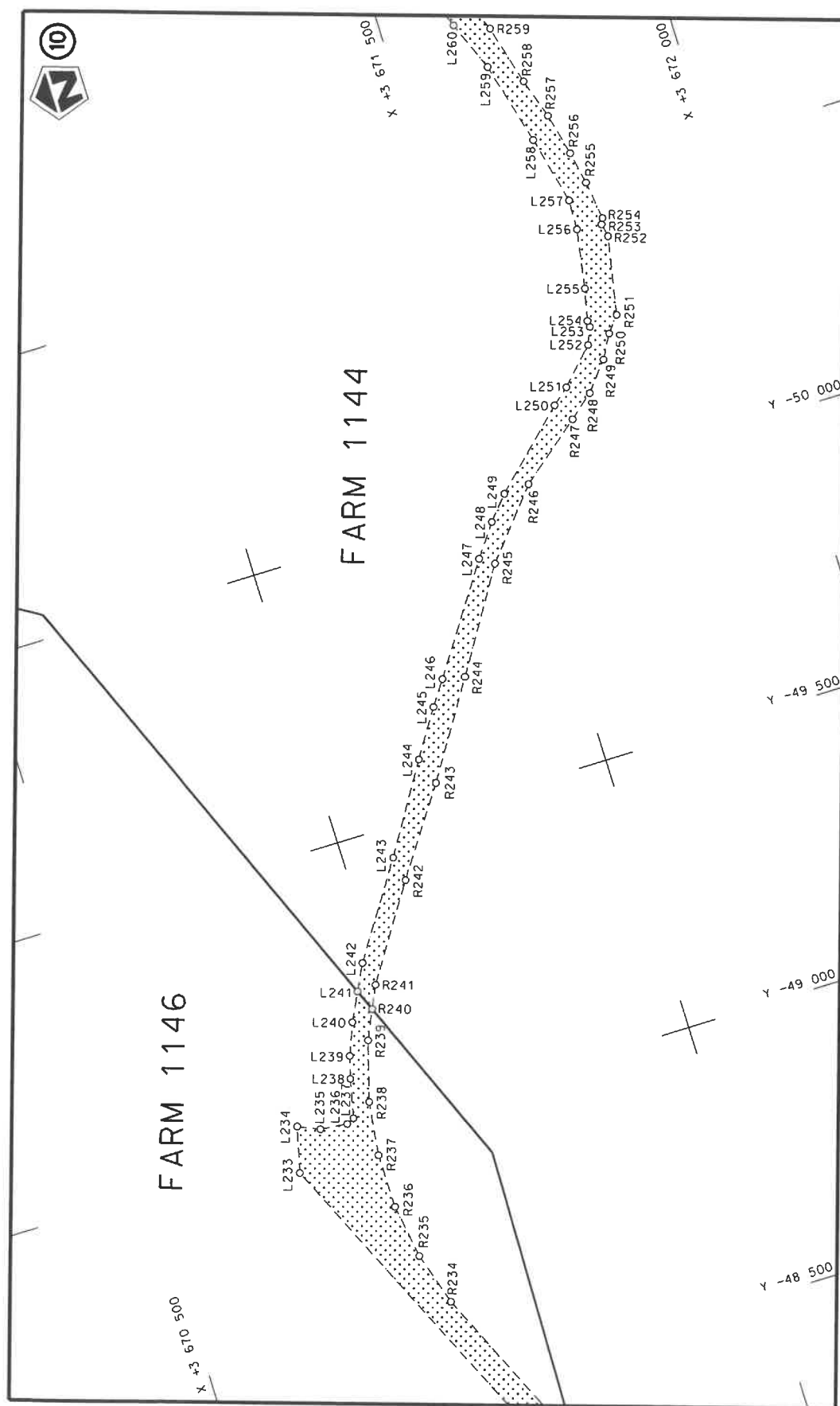
Vel 7 van 33
Sheet of
Plan P1209/20

steldie padreserwe voor van 'n gedeelte
represents the road reserve of a portion
van Nasionale Roete R72 Seksie
of National Route Section



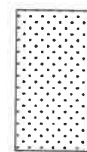
Die figuur getoon
The figure shown

Die Suid Afrikaanse Nasionale Padagentskap MSB Bpk
The South African National Roads Agency SOC Ltd



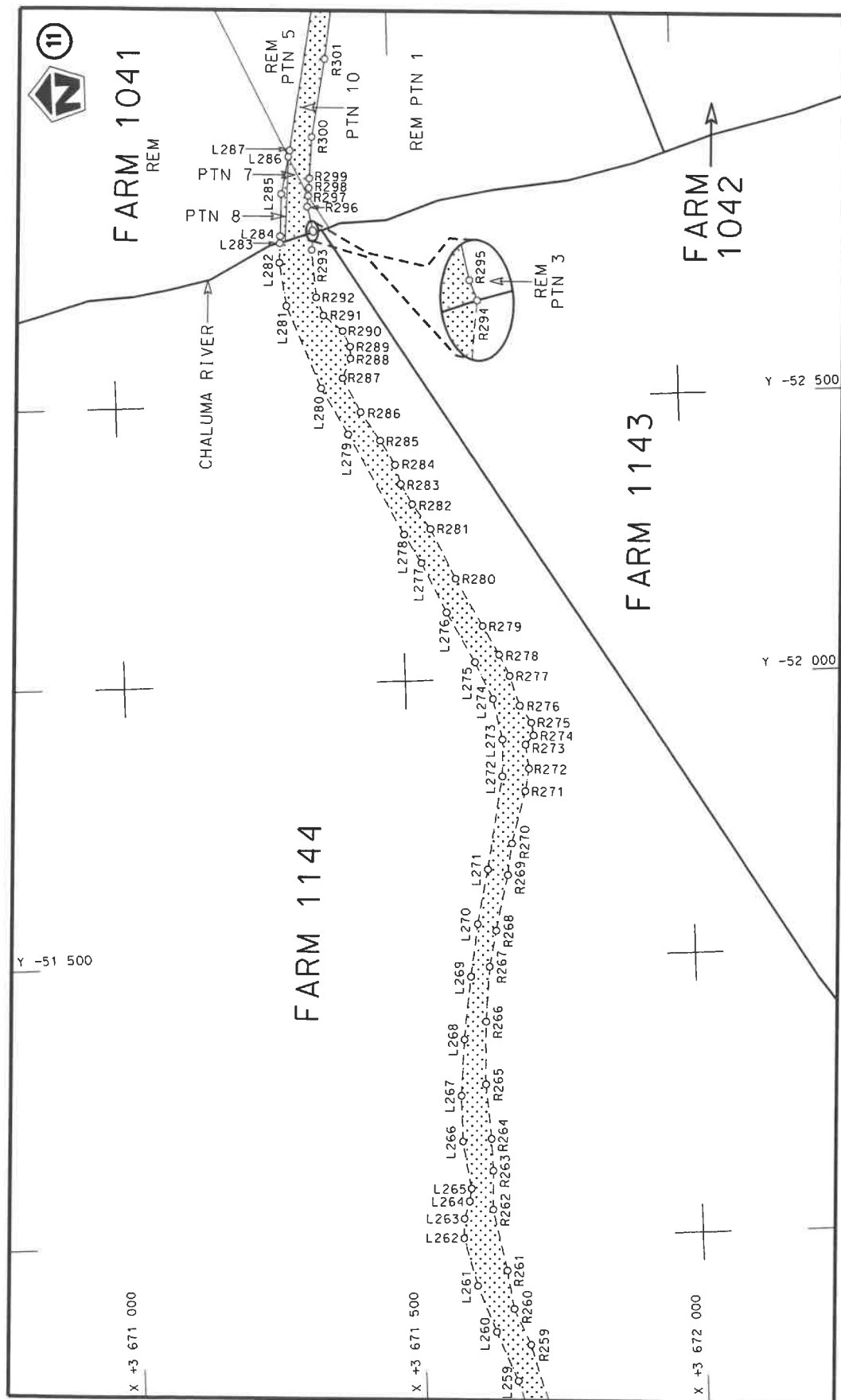
Vel
Sheet 8 of 33
Plan P1209/20

steedie padreserwe voor van 'n gedeelte
represents the road reserve of a portion
van Nasionale Roete R72 Seksie 4
of National Route

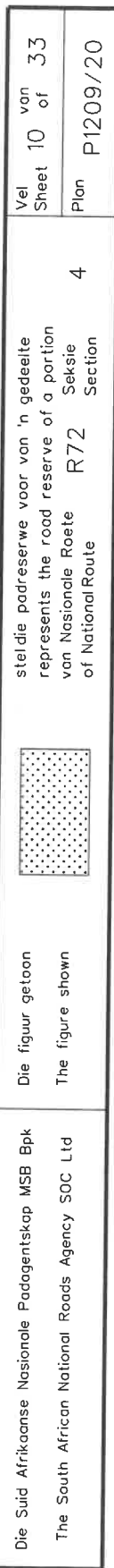


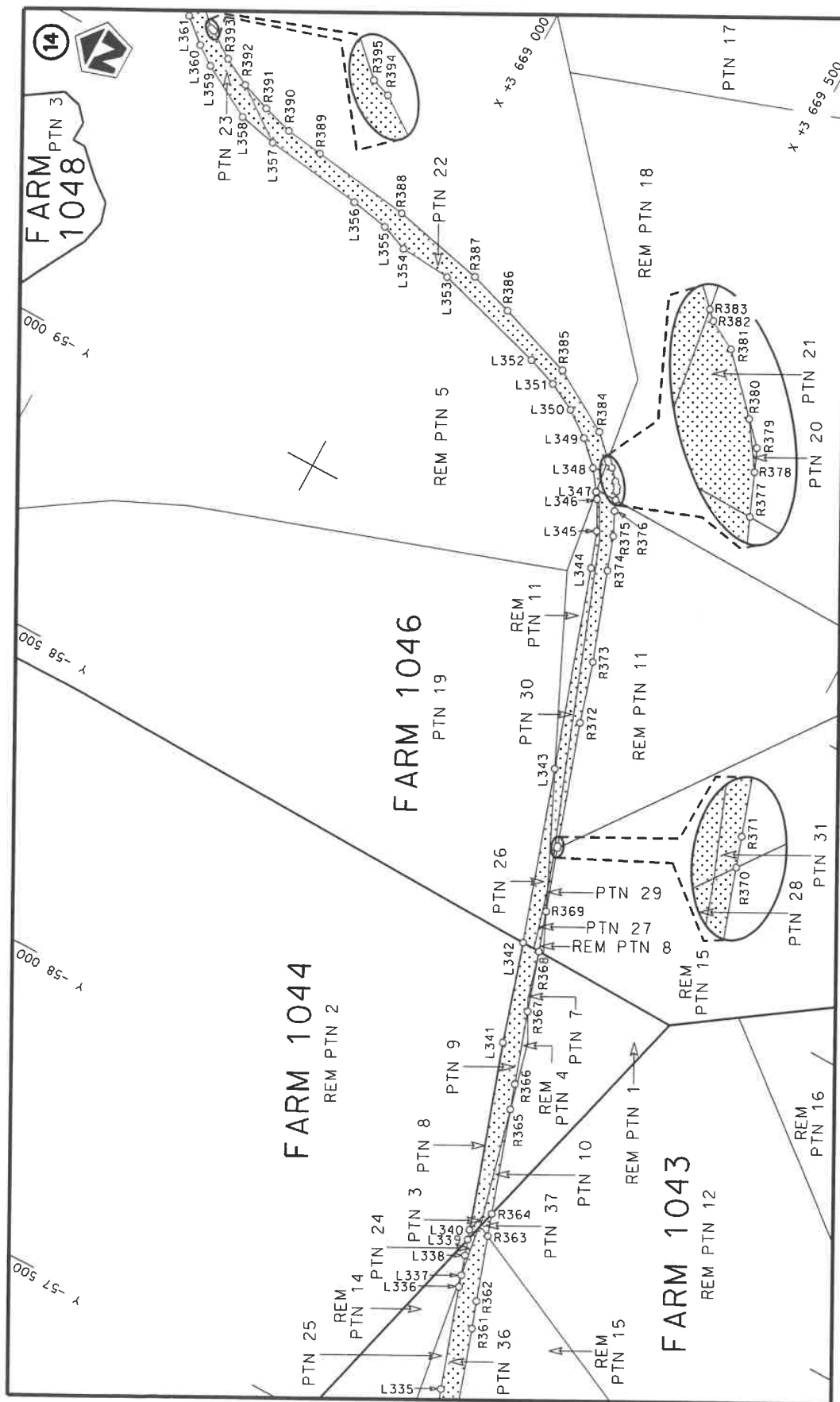
Die figuur getoon
The figure shown

Die Suid Afrikaanse Nasionale Padagentskap MSB Bpk
The South African National Roads Agency SOC Ltd



Die Suid Afrikaanse Nasionale Padagentskap MSB Bpk The South African National Roads Agency SOC Ltd	Die figuur getoon The figure shown	steldie padreserwe voor van 'n gedeelte represents the road reserve of a portion van Nasionale Roete R72 Seksie of National Route Section	4	Plan P1209/20
Vel Sheet 9 of 33				





Die Suid Afrikaanse Nasionale Padagentskap MSB Bpk
The South African National Roads Agency SOC Ltd

Die figuur getoon
The figure shown

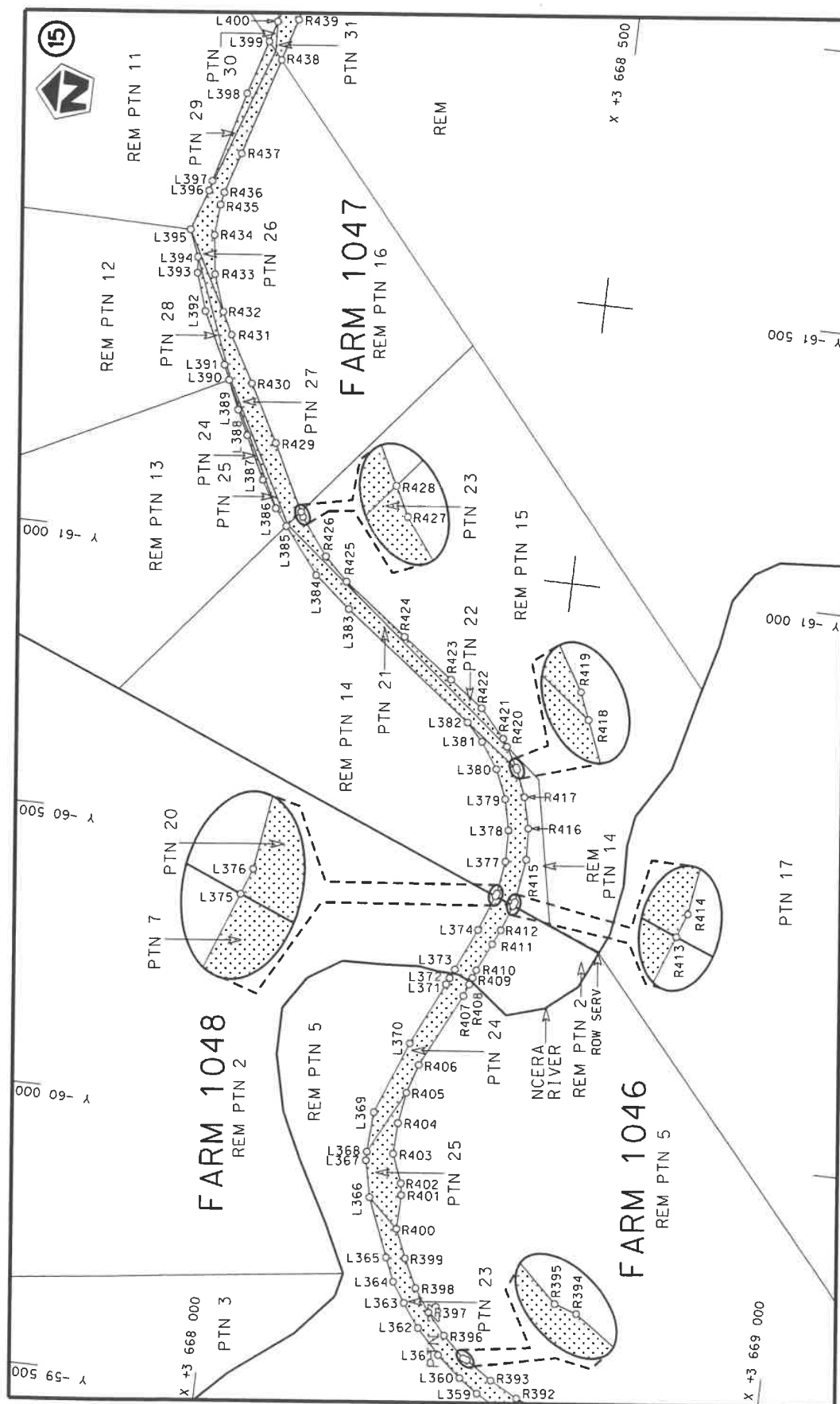



ste die padreserwe voor van 'n gedeelte
represents the road reserve of a portion
van Nasionale Roete R72 Seksie
of National Route Section

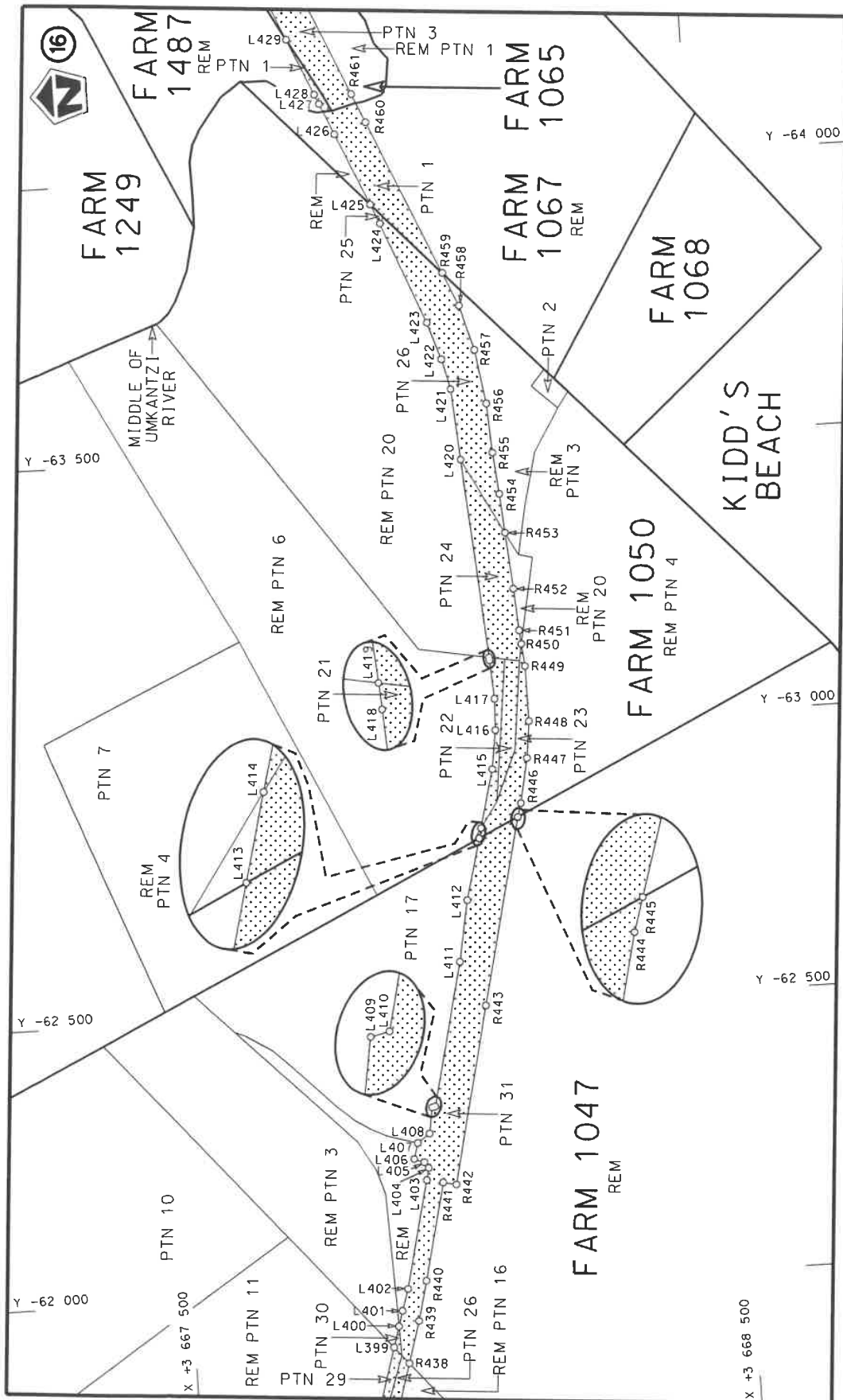
4

Vel
Sheet 11
of 33

Plan
P1209/20

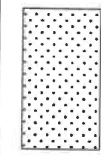


Die Suid Afrikaanse Nasionale Podagentskap MSB Bpk The South African National Roads Agency SOC Ltd	Die figuur getoon The figure shown		steldie padreserwe voor van 'n gedeelte represents the road reserve of a portion van Nasionale Roete of National Route	4	Vel Sheet	12 of	33 33
					Plan	P1209/20	



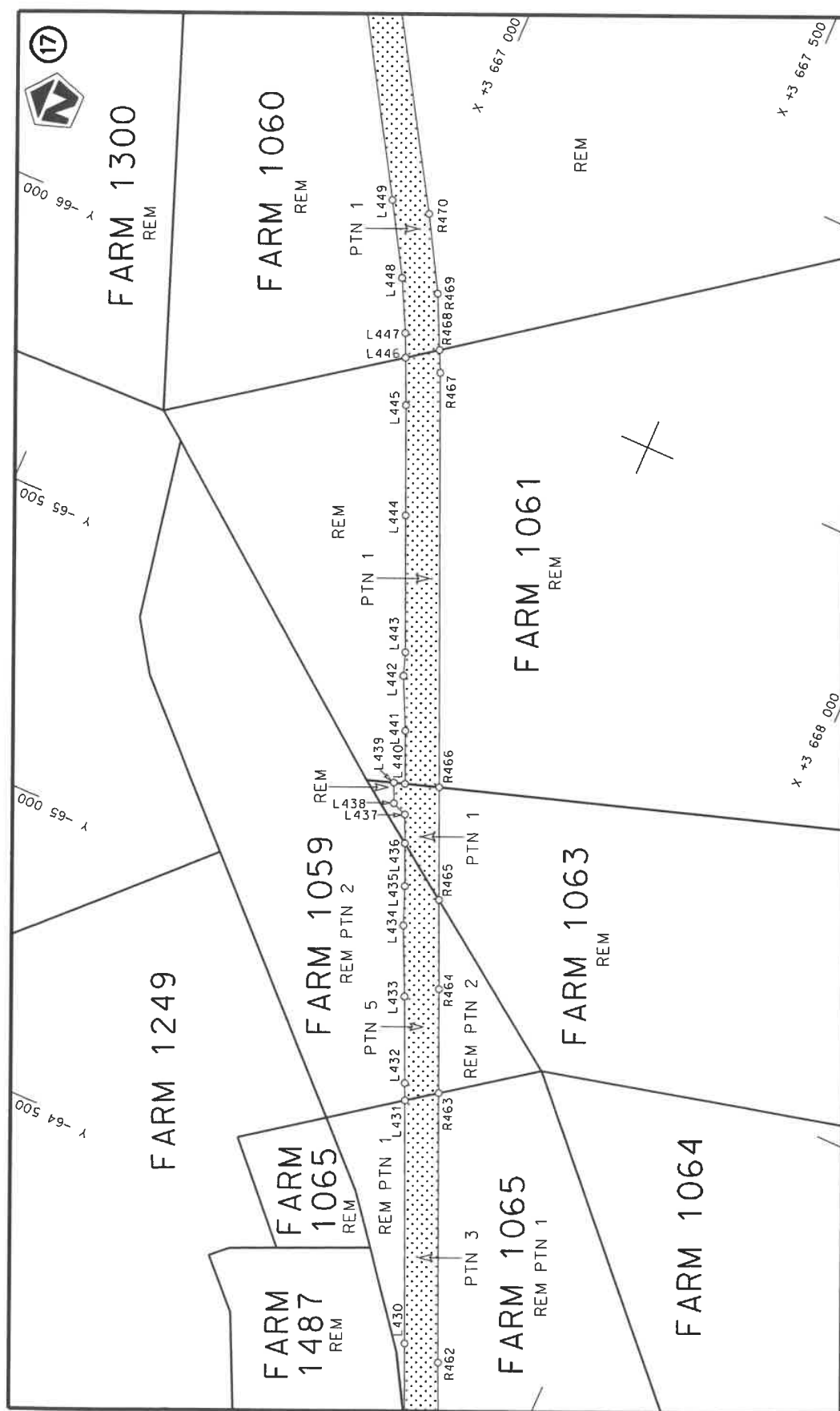
Die Suid Afrikaanse Nasionale Padagentskap MSB Bpk
The South African National Roads Agency SOC Ltd

Die figuur getoon
The figure shown



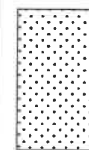
stel die padreserwe voor van 'n gedeelte
represents the road reserve of a portion
van Nasionale Roete R72 Seksie
of National Route Section

Vel
Sheet
13 of 33
Plan
P1209/20



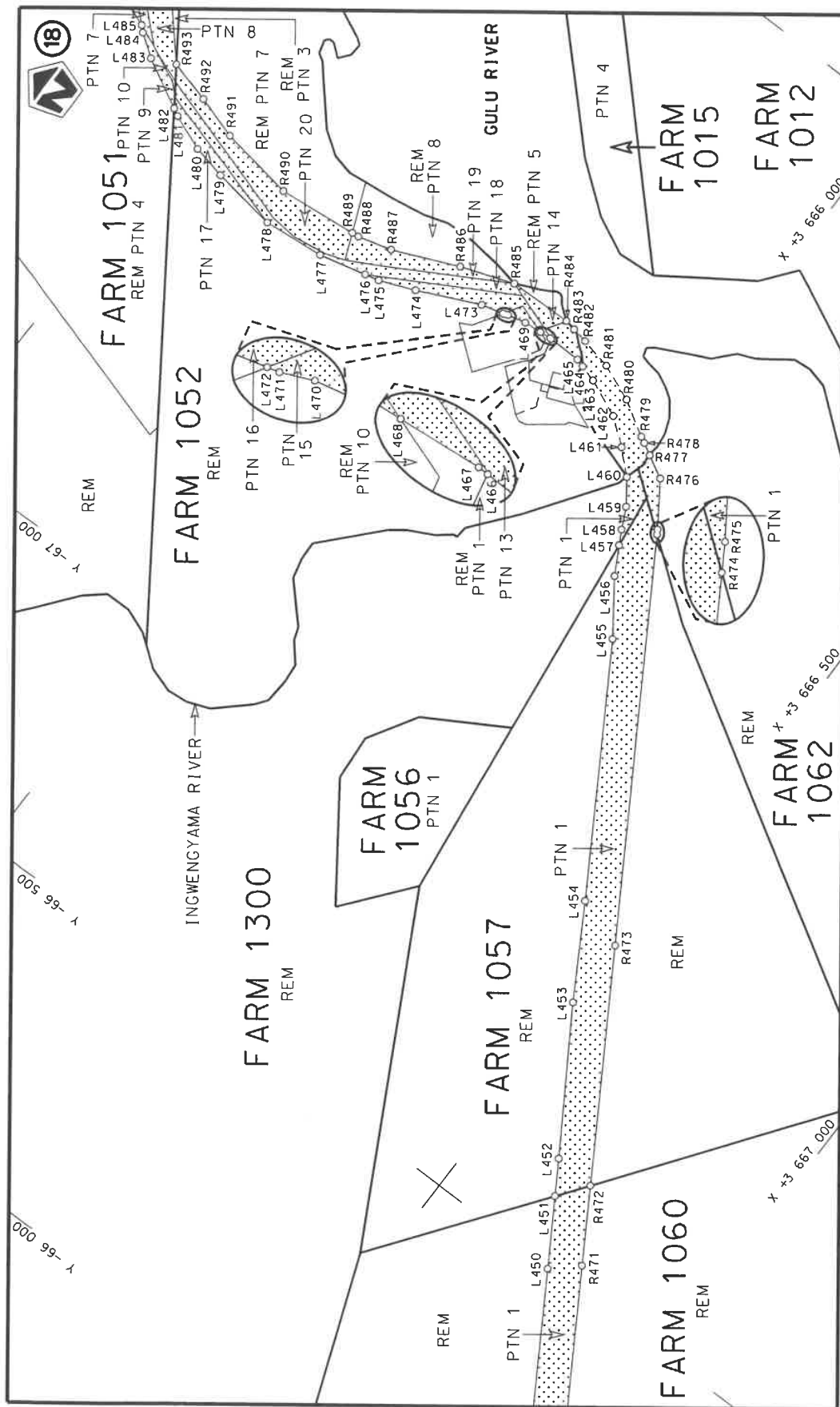
Die Suid Afrikaanse Nasionale Padagentskap MSB Bpk
The South African National Roads Agency SOC Ltd

Die figuur getoon
The figure shown



steidie padreserwe voor van 'n gedeelte
represents the road reserve of a portion
van Nasionale Roete R72 Seksie
of National Route Section

Vel van
Sheet 14 of 33
Plan P1209/20



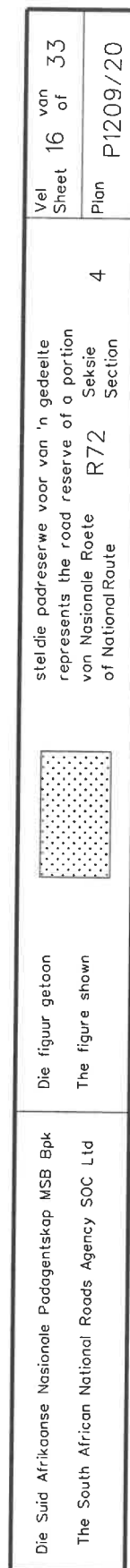
Vel 15 van 33
Sheet of
Plan P1209/20

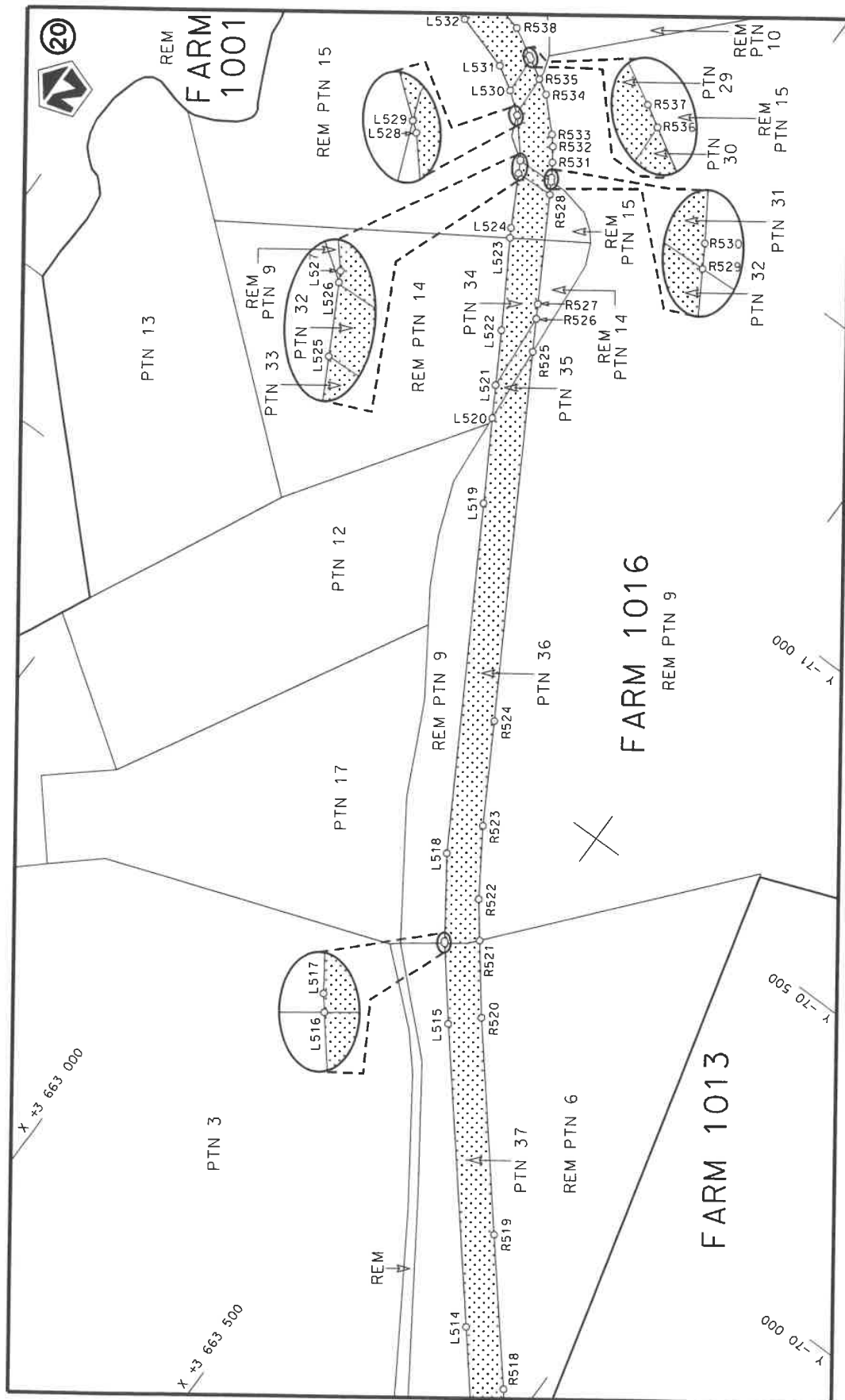
steidie padreserwe voor van 'n gedeelte
represents the road reserve of a portion
van Nasionale Roete R72 Sekse
of National Route Section



Die figuur getoon
The figure shown

Die Suid Afrikaanse Nasionale Padagentiskap MSB Bpk
The South African National Roads Agency SOC Ltd



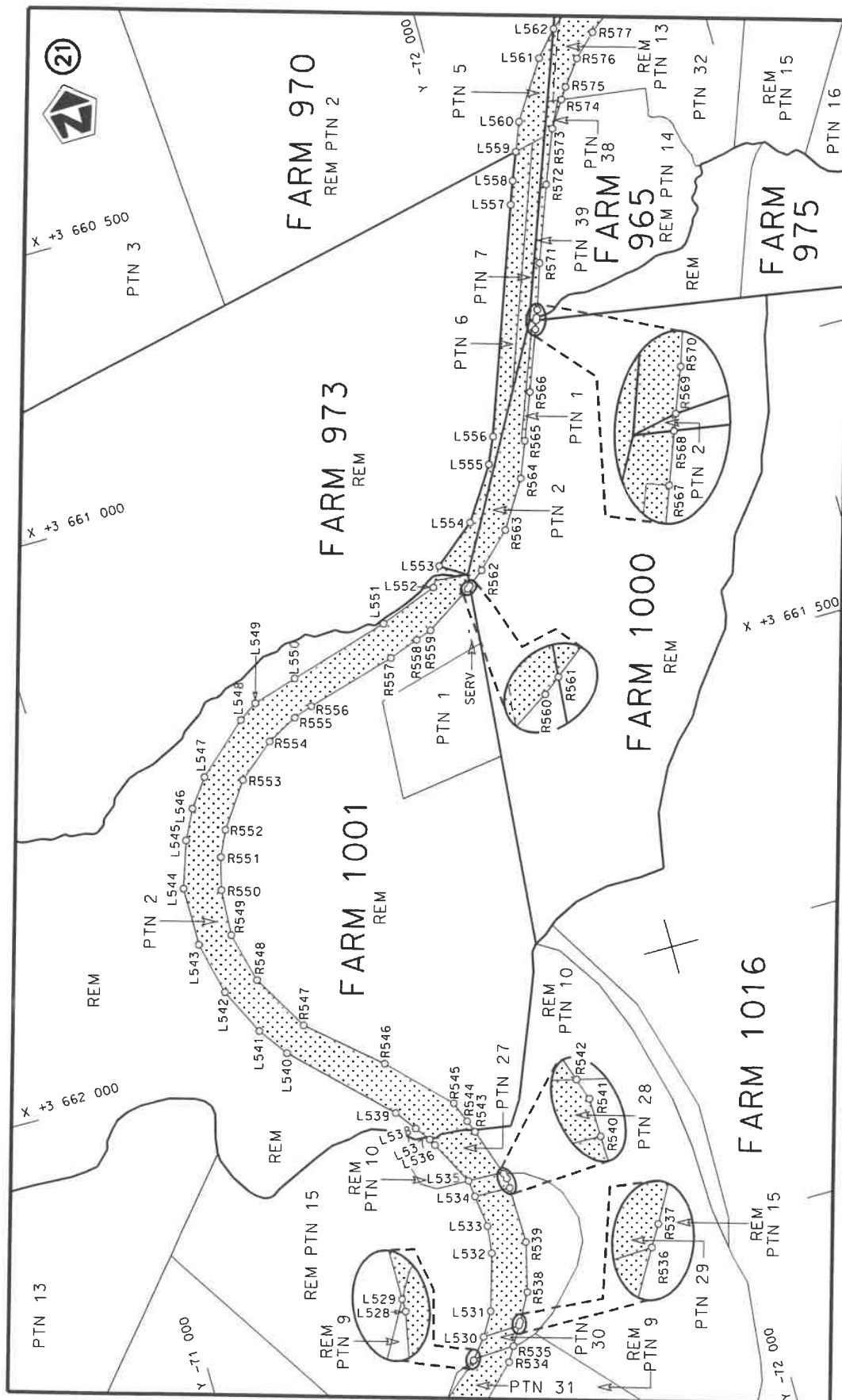


Die Suid Afrikaanse Nasionale Padagentskap MSB Bpk
The South African National Roads Agency SOC Ltd

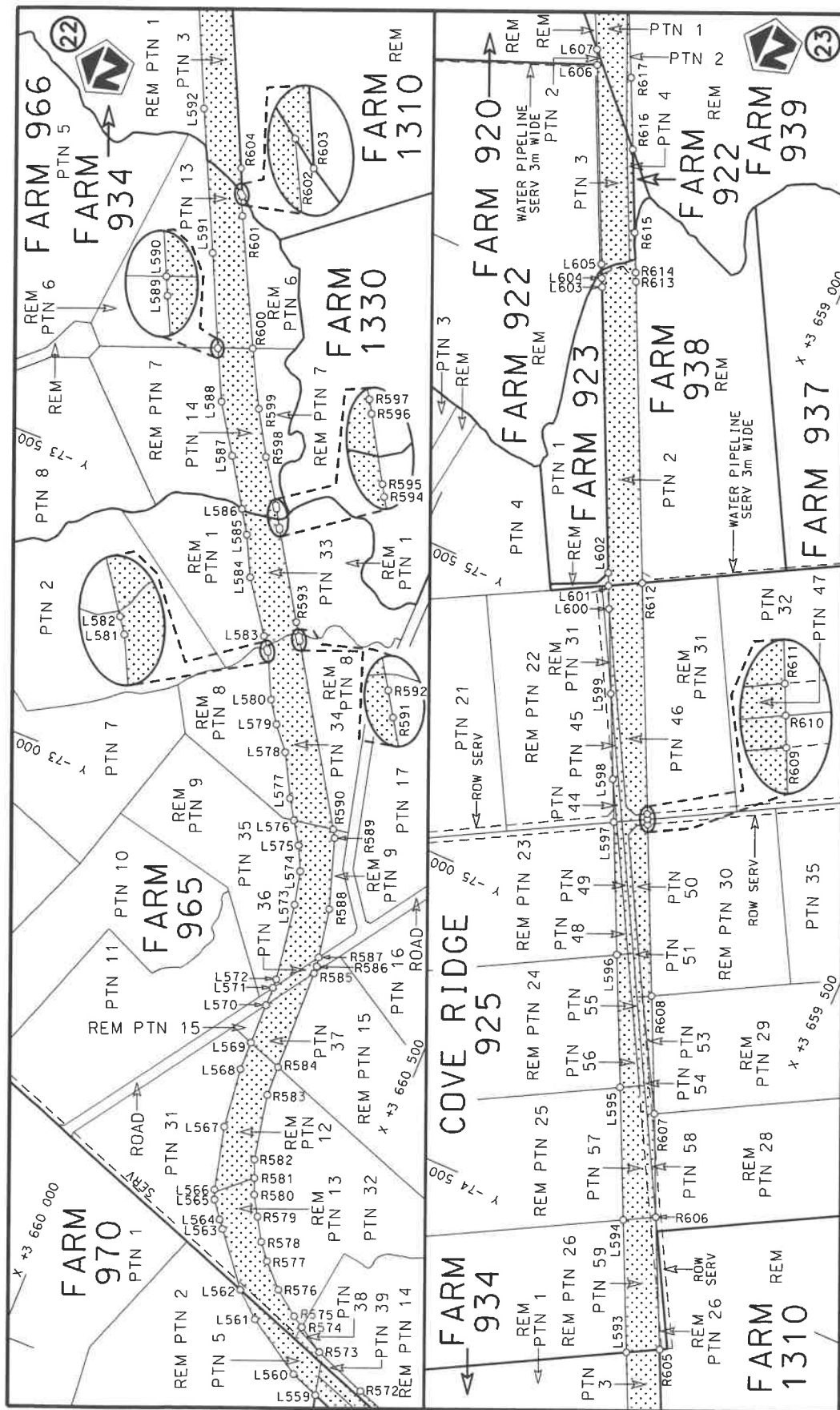
Die figuur getoon
The figure shown

stelt die padreserwe voor van 'n gedeelte
represents the road reserve of a portion
van Nasionale Roete R72 Seksie
of National Route of National Route

Vel
Sheet 17 of 33
Plan P1209/20

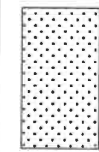


Die Suid Afrikaanse Nasionale Padagentskap MSB Bpk The South African National Roads Agency SOC Ltd	Die figuur getoon The figure shown	ste die padreserwe voor van 'n gedeelte represents the road reserve of a portion van Nasionale Roete R72 of National Route	Vel Sheet 18 of 33 Plan P1209/20 Section 4
---	---------------------------------------	---	---



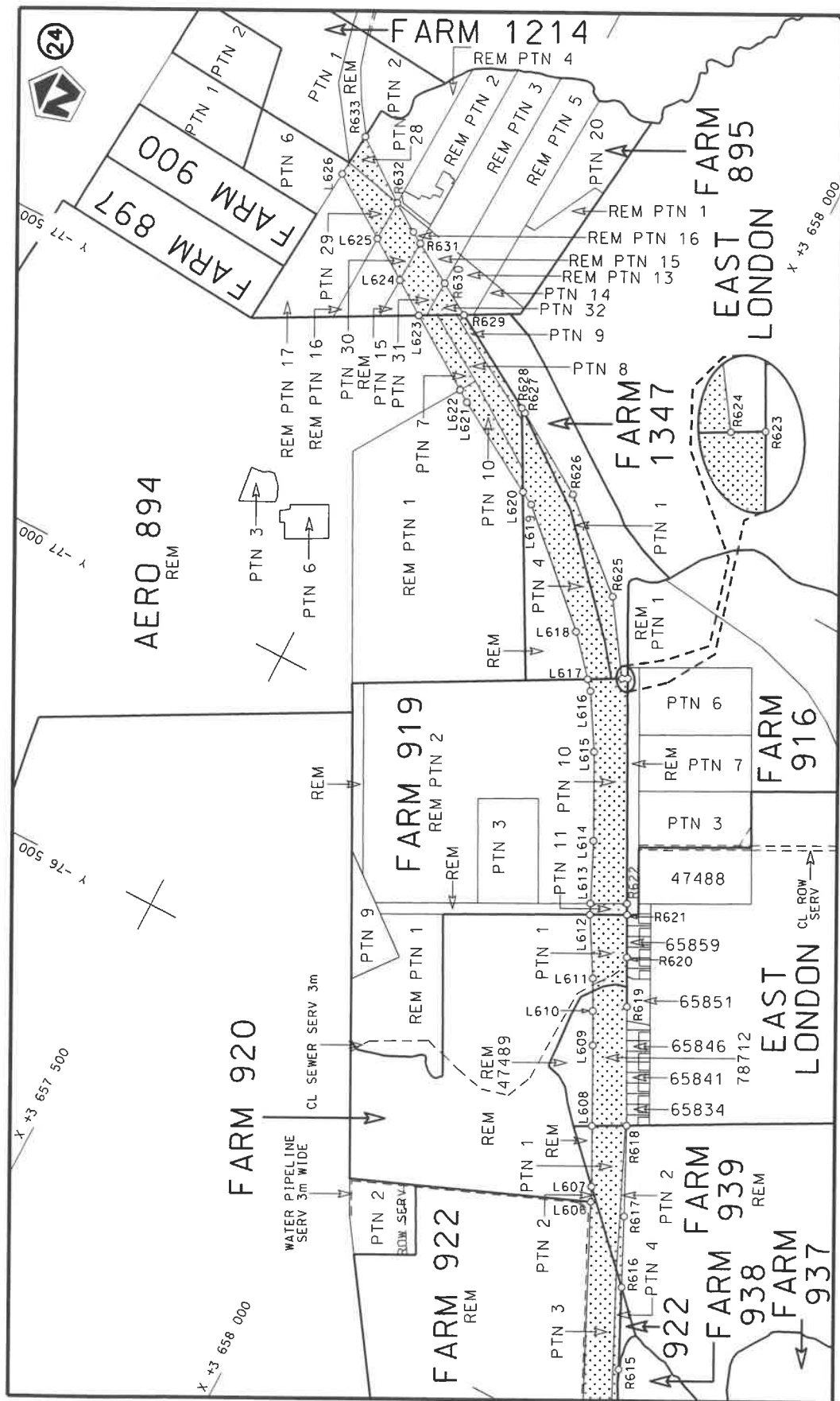
Vel
Sheet 19 of 33
Plan P1209/20

steeldie padreserwe voor van 'n gedeelte
represents the road reserve of a portion
van Nasionale Roete R72
of National Route Section



Die figuur getoon
The figure shown

Die Suid Afrikaanse Nasionale Padagentskap MSB Bpk
The South African National Roads Agency SOC Ltd



Vel van
Sheet 20 of 33
Plan P1209/20

stel die padreserwe voor van 'n gedeelte
represents the road reserve of a portion
van Nasionale Roete R72 Sekse
of National Route Section



Die figuur getoon
The figure shown

Die Suid Afrikaanse Nasionale Padagentskap MSB Bpk
The South African National Roads Agency SOC Ltd

PADRESERVE KOÖRDINATE / ROAD RESERVE CO-ORDINATES																			
LINKERKANT/LEFT HAND SIDE					REGTERKANT/RIGHT HAND SIDE														
	Y		X	WG 27°		Y		X											
L1	-31 142.16	3	677 064.09		R1	-31 191.03	3	677 051.26											
L2	-31 172.03	3	676 966.38		R2	-31 211.42	3	676 966.58											
L3	-31 228.82	3	676 843.16		R3	-31 219.13	3	676 936.69											
L4	-31 308.81	3	676 732.31		R4	-31 257.87	3	676 870.39											
L5	-31 380.75	3	676 666.99		R5	-31 270.01	3	676 849.63											
L6	-31 394.32	3	676 655.73		R6	-31 341.27	3	676 754.04											
L7	-31 461.34	3	676 604.77		R7	-31 408.15	3	676 684.03											
L8	-31 506.38	3	676 567.91		R8	-31 504.67	3	676 613.21											
L9	-31 554.62	3	676 538.10		R9	-31 625.48	3	676 555.27											
L10	-31 580.60	3	676 524.14		R10	-31 756.92	3	676 495.58											
L11	-31 646.62	3	676 488.53		R11	-32 058.77	3	676 365.29											
L12	-31 684.96	3	676 471.52		R12	-32 617.86	3	676 122.89											
L13	-31 775.47	3	676 431.76		R13	-33 133.05	3	675 899.84											
L14	-32 067.58	3	676 305.28		R14	-33 437.73	3	675 767.07											
L15	-32 634.14	3	676 059.80		R15	-33 760.75	3	675 627.44											
L16	-32 949.33	3	675 923.21		R16	-33 883.25	3	675 579.99											
L17	-33 463.73	3	675 700.08		R17	-33 966.24	3	675 551.40											
L18	-33 683.98	3	675 604.89		R18	-33 985.78	3	675 545.39											
L19	-33 776.27	3	675 565.47		R19	-34 095.18	3	675 523.33											
L20	-33 787.40	3	675 561.21		R20	-34 227.66	3	675 491.72											
L21	-33 841.98	3	675 540.29		R21	-34 378.32	3	675 452.42											
L22	-33 870.44	3	675 529.38		R22	-34 547.38	3	675 418.50											
L23	-33 961.36	3	675 498.60		R23	-34 587.43	3	675 401.55											
L24	-33 968.68	3	675 496.12		R24	-34 604.88	3	675 397.33											
L25	-33 997.70	3	675 487.42		R25	-34 653.08	3	675 374.49											
L26	-34 012.70	3	675 482.92		R26	-34 677.05	3	675 359.24											
L27	-34 053.40	3	675 471.55		R27	-34 717.26	3	675 335.00											
L28	-34 105.85	3	675 456.90		R28	-34 765.03	3	675 286.47											
L29	-34 199.08	3	675 424.99		R29	-34 814.11	3	675 213.34											
L30	-34 279.70	3	675 407.08		R30	-34 826.58	3	675 180.01											
L31	-34 539.49	3	675 351.97		R31	-34 831.63	3	675 166.52											
L32	-34 600.81	3	675 332.43		R32	-34 838.00	3	675 149.49											
L33	-34 651.33	3	675 304.07		R33	-34 857.04	3	675 057.13											
L34	-34 681.03	3	675 256.88		R34	-34 876.90	3	674 980.39											
L35	-34 739.08	3	675 219.19		R35	-34 909.81	3	674 910.08											
L36	-34 777.38	3	675 145.17		R36	-34 984.30	3	674 824.14											
L37	-34 790.18	3	675 080.31		R37	-35 029.85	3	674 792.59											
L38	-34 814.42	3	675 001.20		R38	-35 193.34	3	674 724.29											
L39	-34 847.50	3	674 895.35		R39	-35 439.87	3	674 631.26											
L40	-34 881.30	3	674 847.27		R40	-35 517.17	3	674 619.95											
L41	-34 907.19	3	674 810.44		R41	-35 581.26	3	674 624.13											
L42	-34 983.54	3	674 746.93		R42	-35 621.22	3	674 630.40											
L43	-35 032.73	3	674 726.66		R43	-35 687.30	3	674 660.54											
L44	-35 172.82	3	674 668.35		R44	-35 828.73	3	674 782.62											
L45	-35 200.14	3	674 657.69		R45	-36 055.29	3	674 991.50											
L46	-35 266.58	3	674 632.92		R46	-36 099.94	3	675 032.16											
L47	-35 360.01	3	674 597.61		R47	-36 163.99	3	675 087.96											
L48	-35 491.44	3	674 565.64		R48	-36 289.28	3	675 202.18											
L49	-35 586.52	3	674 568.95		R49	-36 345.70	3	675 275.00											
L50	-35 606.43	3	674 574.03		R50	-36 376.51	3	675 348.40											
L51	-35 618.76	3	674 578.19		R51	-36 384.37	3	675 389.17											
					<table><tr><td>Vel</td><td>21</td><td>Van</td><td>33</td><td>P1209/20</td></tr><tr><td>Sheet</td><td></td><td>of</td><td></td><td></td></tr></table>					Vel	21	Van	33	P1209/20	Sheet		of		
Vel	21	Van	33	P1209/20															
Sheet		of																	

PADRESERWE KOÖRDINATE / ROAD RESERVE CO-ORDINATES									
LINKERKANT/LEFT HAND SIDE					REGTERKANT/RIGHT HAND SIDE				
	Y		X	WG 27°		Y		X	
L52	-35 646.50	3	674	586.04	R52	-36 399.65	3	675	428.24
L53	-35 712.38	3	674	622.13	R53	-36 404.79	3	675	438.82
L54	-35 760.30	3	674	654.24	R54	-36 419.43	3	675	459.03
L55	-35 821.48	3	674	700.00	R55	-36 434.70	3	675	480.10
L56	-35 916.41	3	674	786.90	R56	-36 458.36	3	675	512.77
L57	-36 013.11	3	674	875.14	R57	-36 500.07	3	675	548.37
L58	-36 120.42	3	674	971.74	R58	-36 517.25	3	675	563.03
L59	-36 304.47	3	675	141.01	R59	-36 546.28	3	675	580.07
L60	-36 324.02	3	675	160.37	R60	-36 590.89	3	675	606.27
L61	-36 345.25	3	675	180.04	R61	-36 637.45	3	675	629.00
L62	-36 386.19	3	675	237.04	R62	-36 703.06	3	675	607.94
L63	-36 422.52	3	675	303.03	R63	-36 760.84	3	675	589.39
L64	-36 453.15	3	675	332.40	R64	-36 784.67	3	675	581.74
L65	-36 452.95	3	675	343.74	R65	-36 792.68	3	675	576.91
L66	-36 472.73	3	675	418.61	R66	-36 801.42	3	675	589.35
L67	-36 505.56	3	675	490.38	R67	-36 858.63	3	675	550.12
L68	-36 547.85	3	675	521.64	R68	-36 875.24	3	675	527.10
L69	-36 597.57	3	675	541.89	R69	-36 893.29	3	675	516.20
L70	-36 639.47	3	675	549.56	R70	-36 942.44	3	675	432.05
L71	-36 714.62	3	675	544.13	R71	-36 946.10	3	675	408.51
L72	-36 752.68	3	675	530.52	R72	-36 954.25	3	675	388.54
L73	-36 805.87	3	675	498.77	R73	-36 971.64	3	675	340.36
L74	-36 827.07	3	675	471.42	R74	-36 979.98	3	675	306.98
L75	-36 848.91	3	675	423.66	R75	-36 966.22	3	675	247.05
L76	-36 858.39	3	675	378.84	R76	-36 947.67	3	674	992.69
L77	-36 862.92	3	675	348.34	R77	-36 952.32	3	674	865.07
L78	-36 867.52	3	675	300.72	R78	-36 958.01	3	674	771.98
L79	-36 867.95	3	675	292.01	R79	-36 945.59	3	674	684.36
L80	-36 875.69	3	675	216.21	R80	-36 928.35	3	674	614.39
L81	-36 897.07	3	674	994.99	R81	-36 908.24	3	674	543.87
L82	-36 895.76	3	674	941.25	R82	-36 861.44	3	674	468.03
L83	-36 900.96	3	674	889.90	R83	-36 812.72	3	674	388.28
L84	-36 902.49	3	674	848.61	R84	-36 789.75	3	674	330.49
L85	-36 902.36	3	674	833.21	R85	-36 809.10	3	674	218.44
L86	-36 890.73	3	674	719.41	R86	-36 830.69	3	674	185.60
L87	-36 875.74	3	674	656.38	R87	-36 848.01	3	674	153.85
L88	-36 848.07	3	674	540.88	R88	-36 854.21	3	674	118.01
L89	-36 830.95	3	674	497.36	R89	-36 874.72	3	674	077.05
L90	-36 784.34	3	674	429.08	R90	-36 909.34	3	674	036.91
L91	-36 762.08	3	674	382.56	R91	-36 940.21	3	674	023.60
L92	-36 745.85	3	674	328.86	R92	-36 953.74	3	674	008.23
L93	-36 735.41	3	674	302.33	R93	-36 965.33	3	673	982.78
L94	-36 738.69	3	674	218.48	R94	-36 973.43	3	673	947.58
L95	-36 789.05	3	674	084.61	R95	-36 981.11	3	673	882.16
L96	-36 888.57	3	673	937.58	R96	-36 964.20	3	673	834.54
L97	-36 888.36	3	673	896.54	R97	-36 958.01	3	673	808.22
L98	-36 888.12	3	673	848.80	R98	-36 926.37	3	673	699.22
L99	-36 867.45	3	673	794.92	R99	-36 912.49	3	673	684.34
L100	-36 837.24	3	673	725.70	R100	-36 851.44	3	673	610.44
L101	-36 724.03	3	673	516.54	R101	-36 802.66	3	673	536.72
L102	-36 700.61	3	673	425.22	R102	-36 800.42	3	673	514.55
					Vel	22	Van	33	P1209/20
					Sheet		of		

PADRESERWE KOÖRDINATE / ROAD RESERVE CO-ORDINATES							
LINKERKANT/LEFT HAND SIDE				REGTERKANT/RIGHT HAND SIDE			
	Y	X	WG 27°		Y	X	
L103	-36 691.63	3 673 401.77		R103	-36 737.15	3 673 422.59	
L104	-36 649.71	3 673 320.46		R104	-36 693.53	3 673 316.74	
L105	-36 601.30	3 673 226.56		R105	-36 651.06	3 673 213.67	
L106	-36 538.88	3 673 185.71		R106	-36 629.48	3 673 176.45	
L107	-36 474.94	3 673 143.88		R107	-36 603.09	3 673 135.47	
L108	-36 472.20	3 673 132.12		R108	-36 571.17	3 673 085.90	
L109	-36 456.62	3 673 086.80		R109	-36 541.16	3 673 051.28	
L110	-36 366.09	3 673 081.87		R110	-36 449.00	3 673 034.48	
L111	-36 272.43	3 673 076.73		R111	-36 389.29	3 673 018.50	
L112	-36 134.46	3 673 070.72		R112	-36 360.67	3 673 024.85	
L113	-36 111.17	3 673 071.30		R113	-36 319.32	3 673 034.02	
L114	-36 078.05	3 673 069.92		R114	-36 158.66	3 673 026.83	
L115	-36 034.29	3 673 066.22		R115	-36 047.78	3 673 006.75	
L116	-35 998.80	3 673 060.77		R116	-35 985.07	3 672 989.07	
L117	-35 979.17	3 673 052.89		R117	-35 925.95	3 672 905.37	
L118	-35 952.17	3 673 040.23		R118	-35 905.05	3 672 816.87	
L119	-35 930.58	3 673 024.06		R119	-35 945.26	3 672 750.06	
L120	-35 910.15	3 673 003.47		R120	-35 998.21	3 672 707.66	
L121	-35 889.77	3 672 978.07		R121	-36 067.07	3 672 694.61	
L122	-35 872.33	3 672 946.51		R122	-36 116.07	3 672 672.95	
L123	-35 860.29	3 672 919.10		R123	-36 144.34	3 672 654.95	
L124	-35 854.45	3 672 899.97		R124	-36 333.96	3 672 509.71	
L125	-35 851.40	3 672 876.56		R125	-36 370.42	3 672 485.93	
L126	-35 832.26	3 672 841.00		R126	-36 405.52	3 672 475.09	
L127	-35 849.46	3 672 789.54		R127	-36 443.38	3 672 463.74	
L128	-35 870.69	3 672 747.68		R128	-36 494.52	3 672 456.23	
L129	-35 934.45	3 672 678.16		R129	-36 522.75	3 672 457.85	
L130	-35 959.26	3 672 659.84		R130	-36 699.03	3 672 504.78	
L131	-36 047.74	3 672 610.42		R131	-36 763.35	3 672 509.84	
L132	-36 116.17	3 672 568.12		R132	-36 831.02	3 672 505.54	
L133	-36 223.26	3 672 513.19		R133	-36 893.70	3 672 482.60	
L134	-36 333.02	3 672 449.63		R134	-37 017.90	3 672 428.51	
L135	-36 410.44	3 672 428.36		R135	-37 222.54	3 672 276.81	
L136	-36 474.04	3 672 420.91		R136	-37 241.27	3 672 258.17	
L137	-36 547.81	3 672 423.19		R137	-37 324.15	3 672 198.82	
L138	-36 778.60	3 672 468.91		R138	-37 417.25	3 672 129.53	
L139	-36 814.19	3 672 468.49		R139	-37 459.50	3 672 095.48	
L140	-36 880.84	3 672 448.75		R140	-37 502.39	3 672 067.75	
L141	-36 978.03	3 672 393.26		R141	-37 769.50	3 671 749.74	
L142	-37 218.35	3 672 211.41		R142	-37 813.70	3 671 715.52	
L143	-37 453.25	3 672 032.45		R143	-37 904.32	3 671 716.96	
L144	-37 520.40	3 671 930.77		R144	-37 941.16	3 671 726.64	
L145	-37 613.70	3 671 821.70		R145	-37 967.47	3 671 748.12	
L146	-37 670.11	3 671 746.04		R146	-38 052.21	3 671 778.97	
L147	-37 701.42	3 671 657.89		R147	-38 093.14	3 671 780.49	
L148	-37 755.72	3 671 616.16		R148	-38 100.99	3 671 794.88	
L149	-37 824.99	3 671 579.98		R149	-38 197.29	3 671 797.25	
L150	-37 993.31	3 671 686.32		R150	-38 269.42	3 671 761.45	
L151	-38 054.36	3 671 705.08		R151	-38 301.84	3 671 743.77	
L152	-38 126.05	3 671 716.10		R152	-38 352.71	3 671 704.55	
L153	-38 164.72	3 671 721.06		R153	-38 443.59	3 671 630.18	
				<div> <div>Vel Sheet</div> <div>23</div> <div>Van of</div> <div>33</div> <div>P1209/20</div> </div>			

PADRESERWE KOÖRDINATE / ROAD RESERVE CO-ORDINATES														
LINKERKANT/LEFT HAND SIDE					REGTERKANT/RIGHT HAND SIDE									
	Y		X	WG 27°		Y		X						
L154	-38 214.73	3	671	718.03	R154	-38 525.32	3	671	561.34					
L155	-38 253.61	3	671	714.28	R155	-38 522.79	3	671	548.02					
L156	-38 336.10	3	671	660.03	R156	-38 559.61	3	671	489.31					
L157	-38 374.01	3	671	629.26	R157	-38 602.55	3	671	454.96					
L158	-38 398.89	3	671	606.00	R158	-38 634.94	3	671	434.57					
L159	-38 431.51	3	671	567.71	R159	-38 718.11	3	671	385.59					
L160	-38 477.30	3	671	512.24	R160	-38 787.07	3	671	374.04					
L161	-38 514.72	3	671	458.18	R161	-38 880.40	3	671	353.52					
L162	-38 561.11	3	671	405.41	R162	-38 948.08	3	671	338.63					
L163	-38 632.55	3	671	357.52	R163	-39 018.39	3	671	301.04					
L164	-38 714.51	3	671	334.26	R164	-39 345.80	3	671	108.52					
L165	-38 832.73	3	671	315.35	R165	-39 457.99	3	671	016.44					
L166	-38 910.67	3	671	297.09	R166	-39 594.96	3	670	884.25					
L167	-38 977.29	3	671	265.89	R167	-39 682.29	3	670	851.43					
L168	-39 037.64	3	671	230.48	R168	-39 780.15	3	670	836.46					
L169	-39 320.47	3	671	064.51	R169	-39 822.48	3	670	840.46					
L170	-39 397.43	3	671	008.56	R170	-39 919.94	3	670	815.68					
L171	-39 475.19	3	670	918.32	R171	-39 959.36	3	670	809.73					
L172	-39 483.70	3	670	881.47	R172	-40 473.45	3	670	731.92					
L173	-39 530.69	3	670	844.73	R173	-41 250.25	3	670	614.66					
L174	-39 647.37	3	670	804.61	R174	-41 446.10	3	670	584.61					
L175	-39 765.24	3	670	780.95	R175	-41 533.87	3	670	556.24					
L176	-39 926.36	3	670	768.71	R176	-41 673.30	3	670	504.12					
L177	-39 988.57	3	670	758.73	R177	-41 777.54	3	670	439.62					
L178	-40 197.55	3	670	725.22	R178	-41 860.52	3	670	389.23					
L179	-40 401.27	3	670	695.45	R179	-42 032.13	3	670	282.84					
L180	-40 684.17	3	670	648.48	R180	-42 085.51	3	670	251.55					
L181	-41 079.94	3	670	588.99	R181	-42 163.13	3	670	206.04					
L182	-41 430.59	3	670	538.64	R182	-42 255.40	3	670	149.29					
L183	-41 546.47	3	670	499.99	R183	-42 305.91	3	670	115.12					
L184	-41 692.04	3	670	448.98	R184	-42 407.14	3	670	054.14					
L185	-41 798.27	3	670	390.34	R185	-42 498.35	3	670	017.93					
L186	-41 963.97	3	670	285.16	R186	-42 554.93	3	670	004.59					
L187	-42 066.09	3	670	221.48	R187	-42 603.90	3	669	997.58					
L188	-42 135.28	3	670	178.34	R188	-42 650.76	3	669	995.01					
L189	-42 289.05	3	670	083.98	R189	-42 727.13	3	670	002.13					
L190	-42 375.50	3	670	030.21	R190	-42 809.67	3	670	029.85					
L191	-42 441.53	3	669	998.79	R191	-42 909.98	3	670	070.43					
L192	-42 498.20	3	669	981.63	R192	-42 971.40	3	670	117.20					
L193	-42 637.94	3	669	954.13	R193	-43 025.27	3	670	167.57					
L194	-42 664.86	3	669	954.35	R194	-43 018.94	3	670	175.54					
L195	-42 865.78	3	669	990.88	R195	-43 119.84	3	670	298.77					
L196	-42 929.49	3	670	034.30	R196	-43 274.44	3	670	480.64					
L197	-42 999.37	3	670	085.92	R197	-43 277.26	3	670	483.29					
L198	-43 086.33	3	670	168.43	R198	-43 369.28	3	670	554.37					
L199	-43 297.39	3	670	371.42	R199	-43 464.42	3	670	605.29					
L200	-43 344.72	3	670	412.67	R200	-43 530.46	3	670	629.25					
L201	-43 503.08	3	670	525.85	R201	-43 598.20	3	670	646.25					
L202	-43 678.97	3	670	603.37	R202	-43 808.49	3	670	692.47					
L203	-43 900.83	3	670	656.85	R203	-43 885.72	3	670	706.73					
L204	-43 926.58	3	670	658.75	R204	-43 977.87	3	670	719.10					
					<table><tr><td>Vel Sheet</td><td>24</td><td>Van of</td><td>33</td><td>P1209/20</td></tr></table>					Vel Sheet	24	Van of	33	P1209/20
Vel Sheet	24	Van of	33	P1209/20										

PADRESERVE KOÖRDINATE / ROAD RESERVE CO-ORDINATES									
LINKERKANT/LEFT HAND SIDE					REGTERKANT/RIGHT HAND SIDE				
	Y		X	WG 27°		Y		X	
L205	-44 123.42	3	670	664.28	R205	-44 187.84	3	670	731.92
L206	-44 345.67	3	670	652.47	R206	-44 226.43	3	670	729.21
L207	-44 781.12	3	670	617.71	R207	-44 239.94	3	670	727.84
L208	-44 933.61	3	670	596.35	R208	-44 647.83	3	670	665.91
L209	-45 032.75	3	670	581.52	R209	-45 085.29	3	670	634.03
L210	-45 120.16	3	670	571.08	R210	-45 223.71	3	670	639.02
L211	-45 216.25	3	670	579.26	R211	-45 324.96	3	670	653.14
L212	-45 306.49	3	670	590.92	R212	-45 475.88	3	670	682.57
L213	-45 462.43	3	670	614.32	R213	-45 624.83	3	670	734.61
L214	-45 517.30	3	670	625.05	R214	-45 749.48	3	670	793.47
L215	-45 648.64	3	670	673.33	R215	-45 852.12	3	670	852.67
L216	-45 736.43	3	670	723.56	R216	-45 923.69	3	670	902.65
L217	-45 855.64	3	670	794.09	R217	-45 938.29	3	670	913.84
L218	-45 977.76	3	670	880.43	R218	-45 993.45	3	670	956.15
L219	-46 295.26	3	671	143.30	R219	-46 195.06	3	671	123.93
L220	-46 410.07	3	671	238.36	R220	-46 299.67	3	671	211.37
L221	-46 784.75	3	671	548.44	R221	-46 563.34	3	671	431.75
L222	-46 871.38	3	671	604.22	R222	-46 699.43	3	671	549.74
L223	-46 906.20	3	671	623.16	R223	-46 791.63	3	671	616.98
L224	-46 927.37	3	671	612.40	R224	-46 940.61	3	671	668.06
L225	-47 047.84	3	671	617.20	R225	-47 045.55	3	671	668.08
L226	-47 063.48	3	671	615.06	R226	-47 147.42	3	671	643.81
L227	-47 146.22	3	671	588.62	R227	-47 321.33	3	671	567.93
L228	-47 380.95	3	671	481.29	R228	-47 342.54	3	671	557.92
L229	-47 771.48	3	671	302.71	R229	-47 535.50	3	671	466.91
L230	-47 843.50	3	671	269.78	R230	-47 823.01	3	671	334.41
L231	-48 141.51	3	671	133.45	R231	-47 930.44	3	671	284.90
L232	-48 385.90	3	671	021.65	R232	-48 267.71	3	671	127.62
L233	-48 955.96	3	670	761.19	R233	-48 437.92	3	671	048.24
L234	-49 036.78	3	670	781.39	R234	-48 656.97	3	670	949.52
L235	-49 019.89	3	670	819.49	R235	-48 751.43	3	670	920.64
L236	-49 014.70	3	670	867.79	R236	-48 848.48	3	670	905.52
L237	-49 021.52	3	670	881.63	R237	-48 945.10	3	670	904.48
L238	-49 090.17	3	670	897.08	R238	-49 040.79	3	670	916.98
L239	-49 129.64	3	670	908.30	R239	-49 146.69	3	670	947.76
L240	-49 185.90	3	670	930.70	R240	-49 197.77	3	670	971.39
L241	-49 235.51	3	670	955.75	R241	-49 237.62	3	670	989.82
L242	-49 281.67	3	670	979.06	R242	-49 400.56	3	671	096.23
L243	-49 445.42	3	671	087.14	R243	-49 550.57	3	671	199.12
L244	-49 599.44	3	671	182.57	R244	-49 716.18	3	671	304.55
L245	-49 681.40	3	671	235.20	R245	-49 893.34	3	671	415.04
L246	-49 724.19	3	671	265.12	R246	-50 011.33	3	671	513.96
L247	-49 910.08	3	671	390.71	R247	-50 098.47	3	671	623.41
L248	-49 966.15	3	671	431.74	R248	-50 134.30	3	671	666.43
L249	-50 007.50	3	671	467.65	R249	-50 184.12	3	671	707.48
L250	-50 131.93	3	671	599.77	R250	-50 225.51	3	671	730.83
L251	-50 156.38	3	671	629.56	R251	-50 253.27	3	671	753.55
L252	-50 217.15	3	671	688.78	R252	-50 391.79	3	671	780.12
L253	-50 246.80	3	671	701.39	R253	-50 415.24	3	671	775.43
L254	-50 258.12	3	671	700.50	R254	-50 425.63	3	671	780.25
L255	-50 314.86	3	671	713.04	R255	-50 494.68	3	671	770.78
Vel Sheet 25					Van of 33				
					P1209/20				

PADRESERWE KOÖRDINATE / ROAD RESERVE CO-ORDINATES														
LINKERKANT/LEFT HAND SIDE					REGTERKANT/RIGHT HAND SIDE									
	Y		X	WG 27°		Y		X						
L256	-50 419.69	3	671	730.76	R256	-50 552.92	3	671	759.10					
L257	-50 473.14	3	671	732.37	R257	-50 628.55	3	671	740.72					
L258	-50 594.96	3	671	702.87	R258	-50 699.90	3	671	717.08					
L259	-50 743.19	3	671	663.70	R259	-50 807.21	3	671	688.09					
L260	-50 832.02	3	671	627.77	R260	-50 872.25	3	671	660.34					
L261	-50 915.45	3	671	596.68	R261	-50 941.04	3	671	650.12					
L262	-51 001.05	3	671	574.90	R262	-51 051.05	3	671	628.17					
L263	-51 036.22	3	671	576.65	R263	-51 120.40	3	671	630.40					
L264	-51 066.94	3	671	586.66	R264	-51 177.54	3	671	628.93					
L265	-51 089.54	3	671	590.82	R265	-51 275.14	3	671	622.21					
L266	-51 174.11	3	671	577.90	R266	-51 387.25	3	671	625.86					
L267	-51 256.17	3	671	577.77	R267	-51 485.40	3	671	634.86					
L268	-51 356.40	3	671	586.19	R268	-51 549.28	3	671	648.65					
L269	-51 468.38	3	671	601.20	R269	-51 648.28	3	671	672.39					
L270	-51 562.24	3	671	616.03	R270	-51 704.38	3	671	681.38					
L271	-51 659.19	3	671	637.23	R271	-51 797.38	3	671	707.69					
L272	-51 824.72	3	671	668.01	R272	-51 837.36	3	671	715.41					
L273	-51 890.28	3	671	669.95	R273	-51 880.29	3	671	710.65					
L274	-51 963.27	3	671	655.30	R274	-51 896.20	3	671	725.60					
L275	-52 030.03	3	671	625.38	R275	-51 919.15	3	671	721.98					
L276	-52 120.27	3	671	577.58	R276	-51 950.13	3	671	702.56					
L277	-52 209.94	3	671	535.58	R277	-52 003.79	3	671	686.23					
L278	-52 261.66	3	671	506.33	R278	-52 042.00	3	671	668.82					
L279	-52 443.41	3	671	411.84	R279	-52 094.00	3	671	641.11					
L280	-52 526.90	3	671	366.23	R280	-52 179.94	3	671	595.43					
L281	-52 675.61	3	671	308.87	R281	-52 270.04	3	671	553.49					
L282	-52 752.83	3	671	298.75	R282	-52 315.09	3	671	522.53					
L283	-52 787.45	3	671	300.06	R283	-52 351.62	3	671	502.91					
L284	-52 800.03	3	671	301.14	R284	-52 386.53	3	671	494.09					
L285	-52 875.49	3	671	305.16	R285	-52 430.45	3	671	468.80					
L286	-52 941.04	3	671	319.86	R286	-52 482.10	3	671	435.30					
L287	-52 952.46	3	671	322.50	R287	-52 543.66	3	671	405.11					
L288	-53 225.74	3	671	372.51	R288	-52 578.46	3	671	420.10					
L289	-53 268.12	3	671	374.99	R289	-52 599.74	3	671	419.87					
L290	-53 303.29	3	671	376.30	R290	-52 627.80	3	671	407.56					
L291	-53 341.54	3	671	377.51	R291	-52 656.74	3	671	374.28					
L292	-53 381.31	3	671	374.52	R292	-52 689.14	3	671	362.26					
L293	-53 435.97	3	671	366.36	R293	-52 773.78	3	671	356.40					
L294	-53 466.75	3	671	357.15	R294	-52 805.75	3	671	360.03					
L295	-53 518.25	3	671	340.74	R295	-52 808.77	3	671	358.98					
L296	-53 599.51	3	671	304.16	R296	-52 851.20	3	671	350.57					
L297	-53 645.79	3	671	277.99	R297	-52 870.37	3	671	352.75					
L298	-53 671.03	3	671	262.95	R298	-52 884.49	3	671	354.36					
L299	-53 707.64	3	671	237.51	R299	-52 901.60	3	671	355.90					
L300	-53 719.19	3	671	227.96	R300	-52 975.20	3	671	362.03					
L301	-53 766.77	3	671	179.90	R301	-53 113.38	3	671	389.06					
L302	-53 797.34	3	671	143.33	R302	-53 240.56	3	671	408.81					
L303	-53 858.62	3	671	069.36	R303	-53 262.33	3	671	411.36					
L304	-53 954.00	3	671	027.67	R304	-53 300.63	3	671	414.57					
L305	-54 056.91	3	671	013.58	R305	-53 333.10	3	671	414.36					
L306	-54 180.57	3	671	009.87	R306	-53 390.69	3	671	412.19					
					<table><tr><td>Vel Sheet</td><td>26</td><td>Van of</td><td>33</td><td>P1209/20</td></tr></table>					Vel Sheet	26	Van of	33	P1209/20
Vel Sheet	26	Van of	33	P1209/20										

PADRESERWE KOÖRDINATE / ROAD RESERVE CO-ORDINATES									
LINKERKANT/LEFT HAND SIDE					REGTERKANT/RIGHT HAND SIDE				
	Y		X	WG 27°		Y		X	
L307	-54 300.73	3	670	996.53	R307	-53 501.71	3	671	391.92
L308	-54 402.35	3	670	997.27	R308	-53 613.29	3	671	345.65
L309	-54 740.82	3	670	979.04	R309	-53 668.50	3	671	311.69
L310	-54 838.32	3	670	958.84	R310	-53 696.26	3	671	295.37
L311	-54 979.93	3	670	966.69	R311	-53 750.80	3	671	251.83
L312	-55 066.55	3	670	959.85	R312	-53 774.53	3	671	228.38
L313	-55 119.72	3	670	955.70	R313	-53 842.90	3	671	150.94
L314	-55 278.58	3	670	952.09	R314	-53 876.30	3	671	123.46
L315	-55 806.62	3	670	923.24	R315	-53 897.94	3	671	108.90
L316	-55 857.07	3	670	917.05	R316	-53 989.09	3	671	079.04
L317	-55 886.95	3	670	913.36	R317	-54 033.62	3	671	071.10
L318	-55 965.42	3	670	894.50	R318	-54 124.97	3	671	062.12
L319	-56 007.19	3	670	879.83	R319	-54 210.97	3	671	046.91
L320	-56 043.30	3	670	867.13	R320	-54 253.14	3	671	041.63
L321	-56 114.26	3	670	832.40	R321	-54 331.95	3	671	046.94
L322	-56 326.44	3	670	709.54	R322	-54 351.87	3	671	043.66
L323	-56 334.87	3	670	704.70	R323	-54 419.36	3	671	037.89
L324	-56 546.73	3	670	581.68	R324	-54 466.32	3	671	040.24
L325	-56 614.55	3	670	539.63	R325	-54 508.66	3	671	037.79
L326	-56 705.11	3	670	490.65	R326	-54 541.01	3	671	032.21
L327	-56 707.20	3	670	489.52	R327	-54 587.72	3	671	029.28
L328	-56 751.26	3	670	463.86	R328	-54 650.04	3	671	022.25
L329	-57 108.57	3	670	256.45	R329	-54 693.79	3	671	027.82
L330	-57 272.16	3	670	161.58	R330	-54 762.23	3	671	014.38
L331	-57 279.97	3	670	156.97	R331	-54 954.58	3	671	008.13
L332	-57 367.93	3	670	109.31	R332	-55 014.19	3	671	012.02
L333	-57 458.21	3	670	064.77	R333	-55 015.91	3	671	012.13
L334	-57 550.30	3	670	026.03	R334	-55 057.27	3	671	011.17
L335	-57 654.02	3	669	987.84	R335	-55 106.36	3	671	011.59
L336	-57 830.69	3	669	929.28	R336	-55 145.30	3	671	008.97
L337	-57 851.01	3	669	922.77	R337	-55 354.30	3	670	982.76
L338	-57 885.51	3	669	911.63	R338	-55 429.18	3	670	978.78
L339	-57 912.97	3	669	902.50	R339	-55 705.60	3	670	965.47
L340	-57 929.50	3	669	896.97	R340	-55 841.33	3	670	964.44
L341	-58 253.16	3	669	789.39	R341	-55 877.55	3	670	954.85
L342	-58 427.55	3	669	736.16	R342	-55 939.18	3	670	938.53
L343	-58 728.10	3	669	637.41	R343	-56 000.36	3	670	922.34
L344	-59 074.34	3	669	522.77	R344	-56 118.35	3	670	874.40
L345	-59 137.54	3	669	500.60	R345	-56 288.57	3	670	780.13
L346	-59 188.05	3	669	473.85	R346	-56 372.28	3	670	726.87
L347	-59 198.75	3	669	466.03	R347	-56 440.37	3	670	683.55
L348	-59 233.35	3	669	440.72	R348	-56 519.36	3	670	640.67
L349	-59 272.83	3	669	401.18	R349	-56 592.66	3	670	608.52
L350	-59 306.04	3	669	356.30	R350	-56 654.77	3	670	577.33
L351	-59 332.05	3	669	306.85	R351	-56 705.25	3	670	529.98
L352	-59 351.54	3	669	253.05	R352	-56 788.73	3	670	481.48
L353	-59 410.54	3	669	050.84	R353	-57 151.15	3	670	270.90
L354	-59 417.72	3	668	958.28	R354	-57 271.37	3	670	201.05
L355	-59 436.54	3	668	909.96	R355	-57 342.86	3	670	159.51
L356	-59 449.26	3	668	841.20	R356	-57 458.71	3	670	155.88
L357	-59 473.14	3	668	662.33	R357	-57 511.46	3	670	132.51
					<div> <div>Vel</div> <div>27</div> <div>Van</div> <div>33</div> <div>Sheet</div> <div>of</div> <div>P1209/20</div> </div>				

PADRESERWE KOÖRDINATE / ROAD RESERVE CO-ORDINATES									
LINKERKANT/LEFT HAND SIDE					REGTERKANT/RIGHT HAND SIDE				
	Y		X	WG 27°		Y		X	
L358	-59 487.96	3 668	593.76		R358	-57 558.14	3 670	066.20	
L359	-59 540.99	3 668	500.09		R359	-57 601.67	3 670	045.72	
L360	-59 565.02	3 668	466.54		R360	-57 640.13	3 670	029.34	
L361	-59 601.41	3 668	424.29		R361	-57 775.94	3 669	985.02	
L362	-59 645.44	3 668	383.28		R362	-57 822.73	3 669	968.34	
L363	-59 686.94	3 668	352.91		R363	-57 934.96	3 669	930.97	
L364	-59 722.28	3 668	330.20		R364	-57 973.40	3 669	918.17	
L365	-59 764.15	3 668	312.39		R365	-58 153.92	3 669	858.07	
L366	-59 867.75	3 668	270.75		R366	-58 197.61	3 669	843.52	
L367	-59 932.52	3 668	256.70		R367	-58 322.88	3 669	801.95	
L368	-59 948.16	3 668	256.44		R368	-58 426.86	3 669	768.36	
L369	-60 019.73	3 668	260.41		R369	-58 496.11	3 669	745.32	
L370	-60 149.83	3 668	309.40		R370	-58 605.48	3 669	708.85	
L371	-60 262.37	3 668	360.91		R371	-58 608.91	3 669	707.70	
L372	-60 272.54	3 668	365.32		R372	-58 821.84	3 669	637.35	
L373	-60 290.72	3 668	373.19		R373	-58 928.21	3 669	605.78	
L374	-60 365.79	3 668	405.72		R374	-59 084.49	3 669	550.79	
L375	-60 429.08	3 668	429.35		R375	-59 143.68	3 669	530.73	
L376	-60 434.27	3 668	431.29		R376	-59 184.26	3 669	511.13	
L377	-60 492.98	3 668	439.59		R377	-59 202.45	3 669	503.59	
L378	-60 548.85	3 668	438.40		R378	-59 216.74	3 669	497.66	
L379	-60 603.45	3 668	426.14		R379	-59 224.46	3 669	494.46	
L380	-60 655.03	3 668	404.38		R380	-59 231.99	3 669	487.36	
L381	-60 700.65	3 668	373.23		R381	-59 250.06	3 669	470.34	
L382	-60 731.77	3 668	344.06		R382	-59 255.63	3 669	460.39	
L383	-60 908.19	3 668	111.70		R383	-59 258.63	3 669	457.39	
L384	-60 961.59	3 668	047.39		R384	-59 295.90	3 669	420.08	
L385	-61 042.38	3 667	984.41		R385	-59 361.32	3 669	310.13	
L386	-61 071.68	3 667	961.57		R386	-59 408.85	3 669	173.90	
L387	-61 119.42	3 667	932.66		R387	-59 434.59	3 669	094.26	
L388	-61 195.18	3 667	895.54		R388	-59 471.98	3 668	925.28	
L389	-61 238.67	3 667	874.24		R389	-59 496.22	3 668	745.54	
L390	-61 289.50	3 667	851.97		R390	-59 505.49	3 668	677.55	
L391	-61 315.46	3 667	840.60		R391	-59 521.26	3 668	623.23	
L392	-61 406.48	3 667	795.60		R392	-59 540.63	3 668	570.60	
L393	-61 472.84	3 667	773.75		R393	-59 567.02	3 668	521.71	
L394	-61 501.24	3 667	770.91		R394	-59 598.93	3 668	475.70	
L395	-61 548.53	3 667	752.19		R395	-59 601.17	3 668	469.02	
L396	-61 621.02	3 667	776.77		R396	-59 637.49	3 668	430.52	
L397	-61 638.80	3 667	780.64		R397	-59 675.48	3 668	398.53	
L398	-61 800.87	3 667	823.88		R398	-59 715.85	3 668	370.64	
L399	-61 897.37	3 667	852.37		R399	-59 766.47	3 668	345.81	
L400	-61 934.29	3 667	863.27		R400	-59 816.86	3 668	324.69	
L401	-61 961.81	3 667	871.40		R401	-59 878.25	3 668	325.81	
L402	-62 000.15	3 667	883.71		R402	-59 898.93	3 668	322.84	
L403	-62 192.78	3 667	929.27		R403	-59 949.96	3 668	303.46	
L404	-62 214.28	3 667	933.92		R404	-60 005.53	3 668	304.98	
L405	-62 224.98	3 667	926.76		R405	-60 060.95	3 668	313.62	
L406	-62 231.61	3 667	909.03		R406	-60 113.05	3 668	329.93	
L407	-62 259.75	3 667	917.29		R407	-60 245.16	3 668	393.87	
L408	-62 275.68	3 667	939.21		R408	-60 266.88	3 668	401.47	
					<div> <div>Vel Sheet</div> <div>28</div> <div>Van of</div> <div>33</div> <div>P1209/20</div> </div>				

PADRESERWE KOÖRDINATE / ROAD RESERVE CO-ORDINATES									
LINKERKANT/LEFT HAND SIDE					REGTERKANT/RIGHT HAND SIDE				
	Y		X	WG 27°		Y		X	
L409	-62 321.99	3	667 946.59		R409	-60 279.17	3	668 405.77	
L410	-62 323.29	3	667 952.30		R410	-60 293.74	3	668 410.87	
L411	-62 579.22	3	668 011.67		R411	-60 343.31	3	668 433.79	
L412	-62 688.37	3	668 031.60		R412	-60 370.13	3	668 445.89	
L413	-62 797.60	3	668 059.14		R413	-60 415.59	3	668 462.29	
L414	-62 815.39	3	668 063.65		R414	-60 422.72	3	668 464.87	
L415	-62 919.47	3	668 090.04		R415	-60 500.29	3	668 476.25	
L416	-62 988.71	3	668 099.57		R416	-60 556.21	3	668 473.48	
L417	-63 044.70	3	668 101.51		R417	-60 610.91	3	668 459.93	
L418	-63 113.90	3	668 096.91		R418	-60 658.24	3	668 440.90	
L419	-63 119.20	3	668 096.48		R419	-60 662.22	3	668 439.30	
L420	-63 474.85	3	668 067.47		R420	-60 697.05	3	668 418.32	
L421	-63 601.28	3	668 057.19		R421	-60 710.38	3	668 410.29	
L422	-63 655.57	3	668 043.94		R422	-60 760.06	3	668 365.63	
L423	-63 722.26	3	668 022.00		R423	-60 804.49	3	668 305.73	
L424	-63 903.74	3	667 949.18		R424	-60 870.48	3	668 215.37	
L425	-63 938.59	3	667 933.85		R425	-60 956.23	3	668 101.63	
L426	-64 067.55	3	667 877.47		R426	-60 996.86	3	668 060.46	
L427	-64 122.92	3	667 853.27		R427	-61 061.98	3	668 011.81	
L428	-64 140.00	3	667 845.80		R428	-61 070.73	3	668 007.35	
L429	-64 240.85	3	667 802.02		R429	-61 187.32	3	667 947.97	
L430	-64 369.04	3	667 746.36		R430	-61 287.96	3	667 893.40	
L431	-64 764.97	3	667 573.25		R431	-61 369.95	3	667 846.86	
L432	-64 793.14	3	667 560.93		R432	-61 409.07	3	667 827.29	
L433	-64 934.03	3	667 498.54		R433	-61 473.86	3	667 805.07	
L434	-65 048.64	3	667 446.19		R434	-61 543.18	3	667 796.03	
L435	-65 113.74	3	667 420.32		R435	-61 598.24	3	667 800.00	
L436	-65 183.46	3	667 389.88		R436	-61 620.73	3	667 803.98	
L437	-65 230.35	3	667 369.41		R437	-61 693.42	3	667 826.67	
L438	-65 240.85	3	667 343.81		R438	-61 867.22	3	667 877.98	
L439	-65 274.49	3	667 329.15		R439	-61 941.77	3	667 899.98	
L440	-65 280.36	3	667 347.57		R440	-62 012.81	3	667 917.43	
L441	-65 366.60	3	667 310.34		R441	-62 186.99	3	667 957.94	
L442	-65 454.60	3	667 268.23		R442	-62 181.71	3	667 981.27	
L443	-65 494.36	3	667 254.50		R443	-62 498.51	3	668 053.07	
L444	-65 716.93	3	667 157.34		R444	-62 830.79	3	668 129.52	
L445	-65 896.13	3	667 079.21		R445	-62 831.65	3	668 129.78	
L446	-65 973.09	3	667 044.60		R446	-62 855.72	3	668 136.93	
L447	-66 012.73	3	667 026.78		R447	-62 935.69	3	668 152.47	
L448	-66 099.88	3	666 982.16		R448	-63 001.26	3	668 160.13	
L449	-66 219.71	3	666 911.44		R449	-63 099.76	3	668 158.89	
L450	-66 497.04	3	666 742.26		R450	-63 139.73	3	668 154.93	
L451	-66 607.67	3	666 674.19		R451	-63 164.29	3	668 152.50	
L452	-66 664.94	3	666 638.96		R452	-63 239.01	3	668 146.86	
L453	-66 901.27	3	666 490.45		R453	-63 339.85	3	668 138.34	
L454	-67 058.12	3	666 398.11		R454	-63 409.64	3	668 132.44	
L455	-67 457.97	3	666 154.44		R455	-63 483.80	3	668 124.41	
L456	-67 548.92	3	666 089.24		R456	-63 572.00	3	668 119.01	
L457	-67 597.65	3	666 062.60		R457	-63 668.78	3	668 103.46	
L458	-67 622.31	3	666 049.12		R458	-63 749.31	3	668 080.97	
L459	-67 659.52	3	666 030.94		R459	-63 809.32	3	668 054.79	
					<div> <div>Vel</div> <div>29</div> <div>Van</div> <div>33</div> <div>Sheet</div> <div>of</div> <div>P1209/20</div> </div>				

PADRESERWE KOÖRDINATE / ROAD RESERVE CO-ORDINATES						
LINKERKANT/LEFT HAND SIDE				REGTERKANT/RIGHT HAND SIDE		
	Y	X	WG 27°		Y	X
L460	-67 702.13	3 665 999.98		R460	-64 085.40	3 667 934.31
L461	-67 738.78	3 665 960.52		R461	-64 137.01	3 667 911.79
L462	-67 774.34	3 665 915.13		R462	-64 361.64	3 667 813.77
L463	-67 802.86	3 665 848.51		R463	-64 800.97	3 667 622.53
L464	-67 811.14	3 665 818.89		R464	-64 970.29	3 667 548.83
L465	-67 815.28	3 665 804.11		R465	-65 115.49	3 667 485.17
L466	-67 816.21	3 665 745.33		R466	-65 298.72	3 667 405.23
L467	-67 816.25	3 665 742.84		R467	-65 972.90	3 667 111.19
L468	-67 814.32	3 665 722.57		R468	-66 009.32	3 667 093.73
L469	-67 811.37	3 665 691.26		R469	-66 099.36	3 667 050.56
L470	-67 804.06	3 665 659.10		R470	-66 222.95	3 666 980.02
L471	-67 801.13	3 665 652.52		R471	-66 537.88	3 666 787.33
L472	-67 800.46	3 665 650.02		R472	-66 660.16	3 666 712.53
L473	-67 789.97	3 665 610.95		R473	-67 026.88	3 666 488.21
L474	-67 739.85	3 665 502.31		R474	-67 653.44	3 666 104.65
L475	-67 714.17	3 665 439.62		R475	-67 661.30	3 666 099.84
L476	-67 707.80	3 665 414.26		R476	-67 736.14	3 666 048.60
L477	-67 686.57	3 665 329.71		R477	-67 757.65	3 666 008.85
L478	-67 675.63	3 665 220.65		R478	-67 769.02	3 665 987.84
L479	-67 692.25	3 665 103.87		R479	-67 774.86	3 665 977.04
L480	-67 705.09	3 665 043.80		R480	-67 811.84	3 665 916.26
L481	-67 729.89	3 664 980.38		R481	-67 837.91	3 665 851.37
L482	-67 737.01	3 664 966.91		R482	-67 849.55	3 665 795.06
L483	-67 782.54	3 664 880.73		R483	-67 854.41	3 665 766.93
L484	-67 810.14	3 664 841.60		R484	-67 857.82	3 665 747.17
L485	-67 819.14	3 664 831.78		R485	-67 854.84	3 665 633.87
L486	-67 881.03	3 664 764.29		R486	-67 821.00	3 665 539.64
L487	-67 898.02	3 664 749.80		R487	-67 770.66	3 665 423.98
L488	-67 931.68	3 664 721.10		R488	-67 753.90	3 665 363.77
L489	-67 945.59	3 664 710.80		R489	-67 752.56	3 665 351.34
L490	-68 002.61	3 664 674.54		R490	-67 737.34	3 665 209.35
L491	-68 063.60	3 664 640.75		R491	-67 758.02	3 665 074.49
L492	-68 084.40	3 664 629.22		R492	-67 781.50	3 664 998.24
L493	-68 154.88	3 664 590.17		R493	-67 801.34	3 664 922.80
L494	-68 177.84	3 664 577.44		R494	-67 874.37	3 664 857.74
L495	-68 256.84	3 664 533.45		R495	-67 907.41	3 664 819.00
L496	-68 272.65	3 664 524.64		R496	-67 949.11	3 664 781.09
L497	-68 329.09	3 664 493.21		R497	-67 986.23	3 664 749.91
L498	-68 363.88	3 664 473.83		R498	-68 094.24	3 664 692.05
L499	-68 378.66	3 664 465.60		R499	-68 135.48	3 664 669.11
L500	-68 444.24	3 664 423.22		R500	-68 184.74	3 664 641.82
L501	-68 463.76	3 664 412.10		R501	-68 272.07	3 664 593.35
L502	-68 590.51	3 664 349.64		R502	-68 284.29	3 664 586.52
L503	-68 636.78	3 664 328.37		R503	-68 315.41	3 664 569.28
L504	-68 677.88	3 664 312.66		R504	-68 322.64	3 664 565.27
L505	-68 771.44	3 664 281.41		R505	-68 379.07	3 664 534.01
L506	-69 028.47	3 664 201.29		R506	-68 496.83	3 664 468.85
L507	-69 106.87	3 664 170.66		R507	-68 558.22	3 664 454.56
L508	-69 117.83	3 664 166.60		R508	-68 564.70	3 664 453.32
L509	-69 194.40	3 664 138.26		R509	-68 618.07	3 664 411.61
L510	-69 260.97	3 664 110.08		R510	-68 670.94	3 664 379.51
				Vel Sheet	30 Van of 33	P1209/20

PADRESERWE KOÖRDINATE / ROAD RESERVE CO-ORDINATES														
LINKERKANT/LEFT HAND SIDE					REGTERKANT/RIGHT HAND SIDE									
	Y		X	WG 27°		Y		X						
L511	-69 324.15	3	664 080.45		R511	-68 749.96	3	664 351.72						
L512	-69 392.94	3	664 038.72		R512	-69 048.35	3	664 258.51						
L513	-69 479.17	3	663 975.10		R513	-69 206.27	3	664 204.36						
L514	-69 655.73	3	663 829.77		R514	-69 294.98	3	664 164.35						
L515	-70 075.98	3	663 483.33		R515	-69 379.25	3	664 118.06						
L516	-70 188.90	3	663 392.95		R516	-69 427.58	3	664 086.10						
L517	-70 191.82	3	663 390.61		R517	-69 462.14	3	664 063.24						
L518	-70 321.34	3	663 300.85		R518	-69 604.80	3	663 949.57						
L519	-70 865.87	3	662 983.68		R519	-69 818.98	3	663 772.36						
L520	-70 998.26	3	662 906.41		R520	-70 119.76	3	663 524.49						
L521	-71 049.56	3	662 876.47		R521	-70 229.60	3	663 440.35						
L522	-71 134.85	3	662 826.70		R522	-70 288.46	3	663 395.27						
L523	-71 277.09	3	662 741.67		R523	-70 399.15	3	663 323.57						
L524	-71 292.56	3	662 732.43		R524	-70 562.68	3	663 229.49						
L525	-71 379.08	3	662 685.73		R525	-71 136.79	3	662 894.75						
L526	-71 399.05	3	662 674.95		R526	-71 188.01	3	662 864.89						
L527	-71 401.06	3	662 673.87		R527	-71 211.00	3	662 851.48						
L528	-71 461.12	3	662 622.66		R528	-71 381.79	3	662 753.37						
L529	-71 461.56	3	662 622.10		R529	-71 401.43	3	662 741.68						
L530	-71 489.79	3	662 586.24		R530	-71 408.01	3	662 737.76						
L531	-71 514.36	3	662 545.26		R531	-71 430.76	3	662 722.94						
L532	-71 544.18	3	662 445.51		R532	-71 453.92	3	662 706.85						
L533	-71 549.63	3	662 396.62		R533	-71 470.68	3	662 692.83						
L534	-71 542.36	3	662 339.32		R534	-71 521.81	3	662 641.97						
L535	-71 538.54	3	662 309.15		R535	-71 537.00	3	662 616.24						
L536	-71 497.82	3	662 231.38		R536	-71 556.52	3	662 583.18						
L537	-71 491.45	3	662 219.22		R537	-71 560.23	3	662 576.89						
L538	-71 472.56	3	662 193.73		R538	-71 586.66	3	662 529.63						
L539	-71 445.60	3	662 157.36		R539	-71 608.29	3	662 442.24						
L540	-71 287.52	3	662 002.40		R540	-71 606.27	3	662 340.92						
L541	-71 250.34	3	661 951.08		R541	-71 605.92	3	662 323.32						
L542	-71 210.07	3	661 867.90		R542	-71 602.76	3	662 313.49						
L543	-71 188.35	3	661 773.32		R543	-71 573.35	3	662 227.38						
L544	-71 188.96	3	661 669.21		R544	-71 564.88	3	662 205.23						
L545	-71 216.38	3	661 587.07		R545	-71 550.45	3	662 168.25						
L546	-71 242.53	3	661 534.91		R546	-71 450.26	3	662 066.80						
L547	-71 278.24	3	661 486.21		R547	-71 329.42	3	661 962.17						
L548	-71 367.59	3	661 404.82		R548	-71 270.83	3	661 861.95						
L549	-71 400.27	3	661 382.83		R549	-71 248.33	3	661 772.19						
L550	-71 479.71	3	661 358.43		R550	-71 253.03	3	661 689.75						
L551	-71 658.53	3	661 305.77		R551	-71 267.75	3	661 632.26						
L552	-71 761.67	3	661 267.05		R552	-71 288.86	3	661 587.14						
L553	-71 781.91	3	661 232.80		R553	-71 342.47	3	661 509.42						
L554	-71 856.10	3	661 172.37		R554	-71 406.75	3	661 455.49						
L555	-71 916.26	3	661 081.04		R555	-71 461.06	3	661 426.40						
L556	-71 936.54	3	661 034.91		R556	-71 494.96	3	661 414.40						
L557	-72 077.15	3	660 643.14		R557	-71 654.99	3	661 368.61						
L558	-72 091.84	3	660 602.97		R558	-71 708.13	3	661 349.55						
L559	-72 111.08	3	660 554.04		R559	-71 736.43	3	661 339.74						
L560	-72 130.76	3	660 503.99		R560	-71 820.44	3	661 285.63						
L561	-72 195.25	3	660 403.97		R561	-71 825.55	3	661 281.67						
					<table><tr><td>Vel Sheet</td><td>31</td><td>Van of</td><td>33</td><td>P1209/20</td></tr></table>					Vel Sheet	31	Van of	33	P1209/20
Vel Sheet	31	Van of	33	P1209/20										

PADRESERWE KOÖRDINATE / ROAD RESERVE CO-ORDINATES									
LINKERKANT/LEFT HAND SIDE					REGTERKANT/RIGHT HAND SIDE				
	Y		X	WG 27°		Y		X	
L562	-72 233.73	3	660	360.15	R562	-71 853.16	3	661	260.34
L563	-72 321.63	3	660	290.08	R563	-71 913.31	3	661	201.94
L564	-72 335.49	3	660	279.03	R564	-71 964.30	3	661	120.05
L565	-72 364.93	3	660	257.27	R565	-71 989.06	3	661	057.13
L566	-72 381.23	3	660	250.58	R566	-72 021.18	3	660	975.48
L567	-72 491.07	3	660	224.44	R567	-72 060.38	3	660	870.09
L568	-72 596.76	3	660	212.24	R568	-72 066.07	3	660	854.81
L569	-72 647.38	3	660	211.71	R569	-72 067.95	3	660	849.99
L570	-72 719.21	3	660	211.21	R570	-72 073.08	3	660	836.84
L571	-72 752.43	3	660	210.93	R571	-72 099.09	3	660	757.29
L572	-72 768.29	3	660	210.79	R572	-72 147.68	3	660	624.93
L573	-72 903.45	3	660	190.77	R573	-72 184.42	3	660	531.50
L574	-72 962.16	3	660	177.56	R574	-72 213.64	3	660	485.85
L575	-73 003.61	3	660	157.65	R575	-72 226.55	3	660	466.20
L576	-73 041.79	3	660	133.23	R576	-72 259.65	3	660	422.52
L577	-73 075.14	3	660	111.91	R577	-72 298.69	3	660	384.53
L578	-73 147.64	3	660	073.14	R578	-72 326.73	3	660	362.28
L579	-73 187.44	3	660	040.21	R579	-72 365.76	3	660	339.18
L580	-73 224.48	3	660	014.72	R580	-72 399.66	3	660	319.13
L581	-73 300.40	3	659	977.49	R581	-72 426.90	3	660	308.15
L582	-73 307.72	3	659	972.44	R582	-72 457.53	3	660	295.79
L583	-73 324.19	3	659	960.54	R583	-72 572.47	3	660	273.46
L584	-73 411.15	3	659	898.61	R584	-72 625.35	3	660	272.50
L585	-73 478.80	3	659	864.49	R585	-72 803.81	3	660	268.71
L586	-73 517.89	3	659	839.26	R586	-72 816.94	3	660	268.42
L587	-73 598.28	3	659	787.36	R587	-72 832.98	3	660	265.63
L588	-73 680.03	3	659	733.68	R588	-72 919.43	3	660	250.58
L589	-73 764.68	3	659	692.03	R589	-73 039.77	3	660	211.62
L590	-73 765.65	3	659	691.57	R590	-73 053.21	3	660	203.52
L591	-73 917.77	3	659	619.56	R591	-73 340.13	3	660	022.43
L592	-74 148.56	3	659	508.57	R592	-73 347.02	3	660	018.07
L593	-74 330.16	3	659	422.74	R593	-73 368.78	3	660	004.28
L594	-74 542.70	3	659	321.26	R594	-73 509.48	3	659	915.14
L595	-74 755.24	3	659	219.79	R595	-73 512.50	3	659	913.34
L596	-74 967.76	3	659	118.32	R596	-73 541.44	3	659	896.07
L597	-75 180.38	3	659	017.02	R597	-73 546.97	3	659	892.78
L598	-75 249.01	3	658	984.34	R598	-73 619.28	3	659	843.64
L599	-75 386.01	3	658	919.11	R599	-73 693.58	3	659	799.79
L600	-75 521.87	3	658	854.43	R600	-73 788.33	3	659	749.16
L601	-75 558.71	3	658	836.88	R601	-73 998.51	3	659	643.72
L602	-75 579.63	3	658	827.06	R602	-74 034.78	3	659	625.08
L603	-76 036.75	3	658	609.39	R603	-74 030.75	3	659	630.65
L604	-76 050.74	3	658	602.54	R604	-74 075.56	3	659	609.35
L605	-76 073.13	3	658	591.58	R605	-74 359.07	3	659	474.57
L606	-76 391.46	3	658	440.08	R606	-74 570.92	3	659	372.04
L607	-76 416.31	3	658	428.51	R607	-74 737.47	3	659	294.47
L608	-76 512.95	3	658	379.05	R608	-74 926.26	3	659	204.43
L609	-76 641.32	3	658	313.43	R609	-75 200.89	3	659	073.39
L610	-76 696.02	3	658	284.76	R610	-75 209.44	3	659	069.31
L611	-76 747.40	3	658	257.83	R611	-75 217.97	3	659	065.24
L612	-76 846.28	3	658	200.44	R612	-75 587.83	3	658	889.29
Vel Sheet					32	Van of		33	P1209/20

PADRESERVE KOÖRDINATE / ROAD RESERVE CO-ORDINATES							
LINKERKANT/LEFT HAND SIDE				REGTERKANT/RIGHT HAND SIDE			
	Y	X	WG 27°		Y	X	
L613	-76 864.35	3 658 191.96		R613	-76 069.90	3 658 660.27	
L614	-76 966.06	3 658 144.56		R614	-76 084.61	3 658 653.21	
L615	-77 107.30	3 658 071.83		R615	-76 148.42	3 658 622.63	
L616	-77 200.94	3 658 015.76		R616	-76 281.43	3 658 558.91	
L617	-77 217.14	3 658 001.56		R617	-76 395.65	3 658 504.17	
L618	-77 282.82	3 657 944.02		R618	-76 541.95	3 658 432.77	
L619	-77 446.96	3 657 767.91		R619	-76 730.74	3 658 334.61	
L620	-77 460.26	3 657 744.70		R620	-76 808.69	3 658 293.88	
L621	-77 555.56	3 657 581.74		R621	-76 876.55	3 658 258.66	
L622	-77 569.37	3 657 560.80		R622	-76 894.20	3 658 249.35	
L623	-77 652.90	3 657 434.13		R623	-77 251.23	3 658 063.88	
L624	-77 692.80	3 657 374.52		R624	-77 246.23	3 658 054.73	
L625	-77 739.65	3 657 304.57		R625	-77 368.42	3 657 972.14	
L626	-77 812.91	3 657 195.12		R626	-77 497.40	3 657 825.47	
				R627	-77 586.79	3 657 682.21	
				R628	-77 591.95	3 657 673.43	
				R629	-77 691.28	3 657 504.86	
				R630	-77 725.19	3 657 448.20	
				R631	-77 767.91	3 657 376.81	
				R632	-77 780.10	3 657 356.44	
				R633	-77 812.70	3 657 306.79	
				R634	-77 890.49	3 657 201.18	
				</			