

---

**GOVERNMENT NOTICES • GOEWERMENTSKENNISGEWINGS**

---

**DEPARTMENT OF TRANSPORT**

NO. 6430

11 July 2025

**THE SOUTH AFRICAN NATIONAL ROADS  
AGENCY SOC LIMITED**Registration No: 1998/009584/30

---

**DECLARATION AMENDMENT OF NATIONAL ROAD R567 SECTION 1**

AMENDMENT OF DECLARATION No. 538 OF 2014.

By virtue of section 40(1)(b) of the South African National Roads Agency Limited and the National Roads Act 1998 (Act No. 7 of 1998), I hereby amend Declaration No. 538 of 2014 by substituting paragraph K of the Schedule, being the descriptive declaration of the route from its intersection with National Road N11 Section 13 up to Polokwane, with the accompanying sheets 1 to 15 of Plan No. P1179/19.

In the town of Polokwane the R567 Section 1 enters the town from the north and follows the street known as New Era Drive, at time of declaration up to its junction with Nelson Mandela Drive.

**(National Road R567 Section 1: N11 Intersection – Polokwane)**  
**MINISTER OF TRANSPORT**

## DEPARTEMENT VAN VERVOER

NO. 6430

11 Julie 2025

**DIE SUID-AFRIKAANSE NASIONALE  
PADAGENTSKAP MSB BEPERK**Registrasie No: 1998/009584/30

---

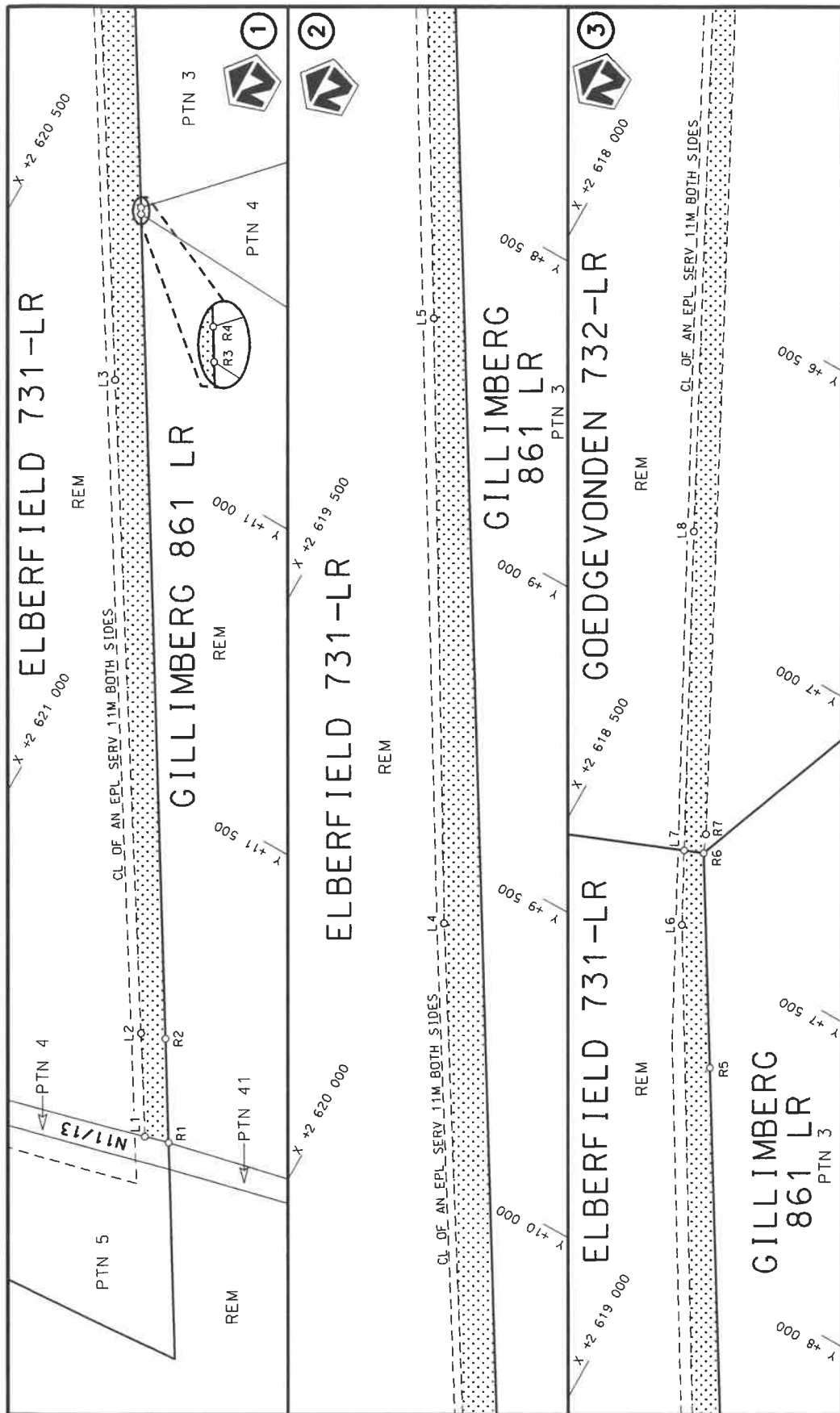
**VERKLARING WYSIGING VAN NASIONALE PAD R567 SEKSIE 1**

WYSIGING VAN VERKLARING No. 538 VAN 2014.

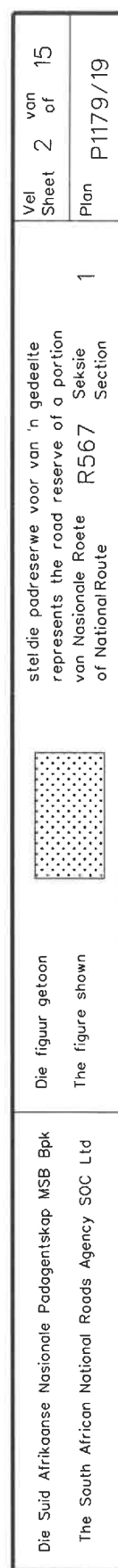
Kragtens Artikel 40(1)(b) van die Wet op die Suid-Afrikaanse Nasionale Padagentskap Beperk en op Nasionale Paaie Wet 1998 (Wet No. 7 van 1998), wysig ek hiermee Verklaring No. 538 van 2014 deur paragraaf K van die Skedule te vervang, synde die gedeelte van die beskrywende verklaring van die pad vanaf die interseksie met Nasionale Pad N11 Seksie 13 tot by Polokwane, met bygaande velle 1 tot 15 van Plan No. P1179/19.

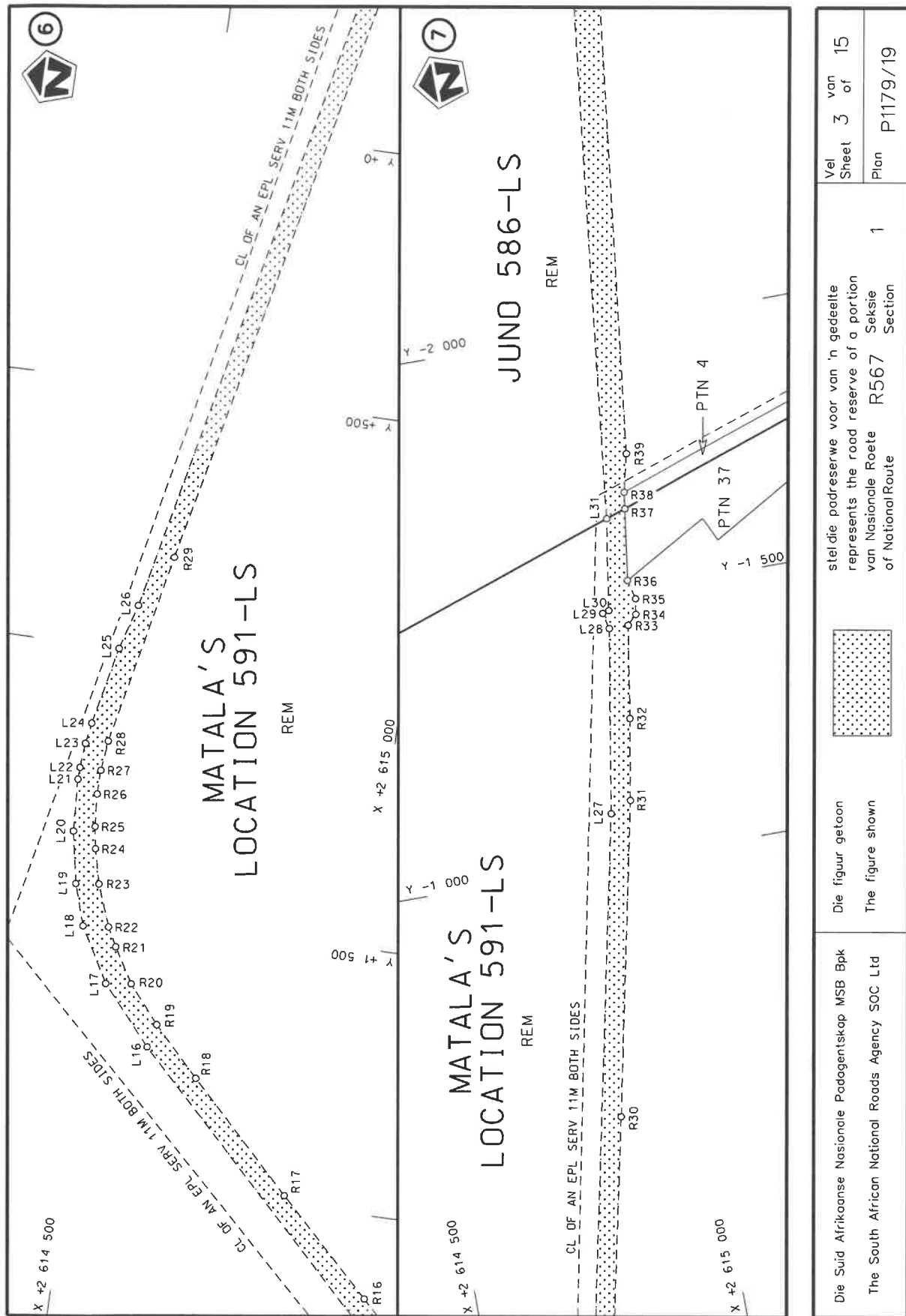
In die dorp Polokwane kom die R567 Seksie 1 die dorp binne vanuit die noorde en volg dan die straat bekend as New Erarylaan, tydens datum van verklaring tot by die aansluiting met Nelson Mandelarylaan.

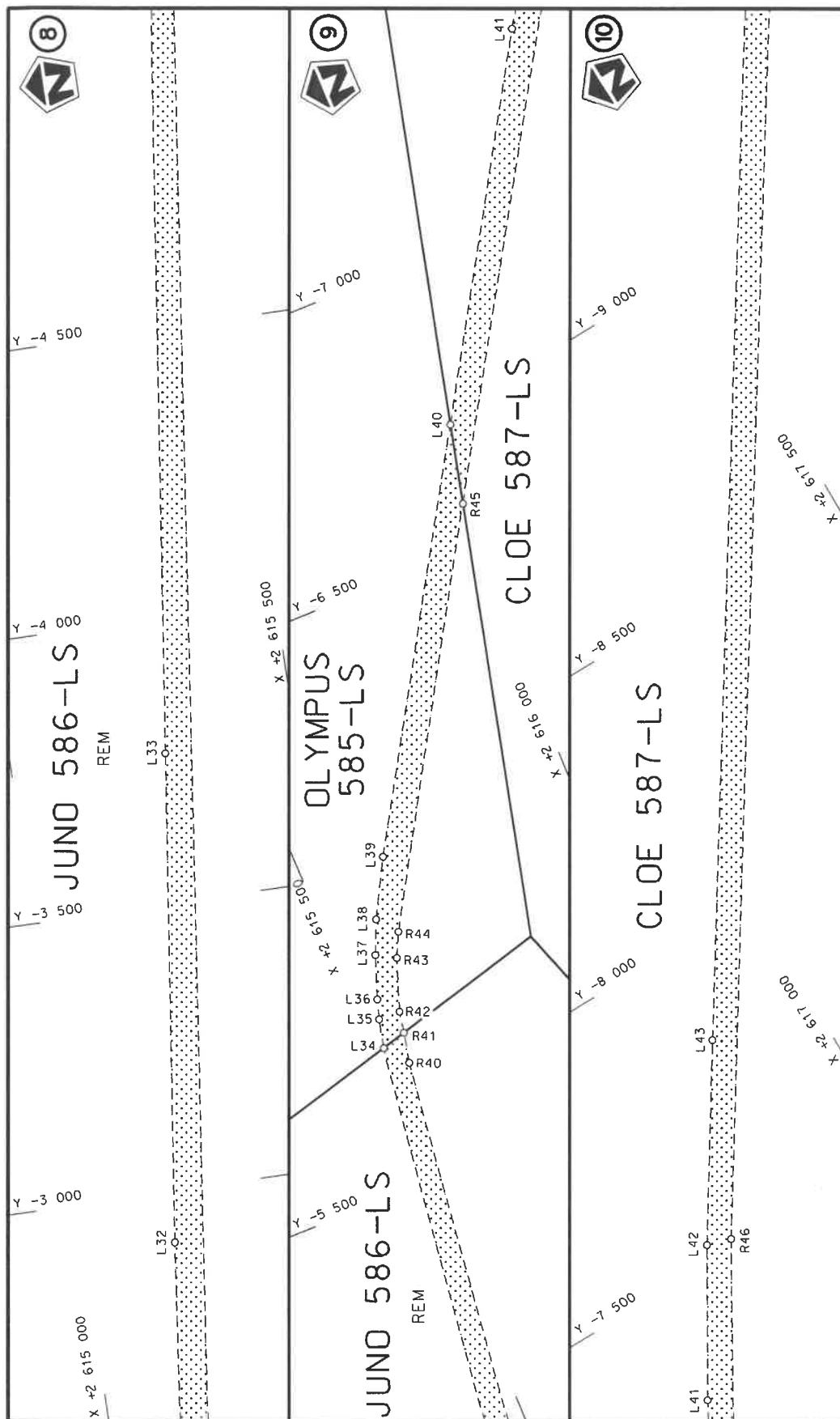
**(Nasionale Pad R567 Seksie 1: N11 Interseksie – Polokwane)**  
**MINISTER VAN VERVOER**



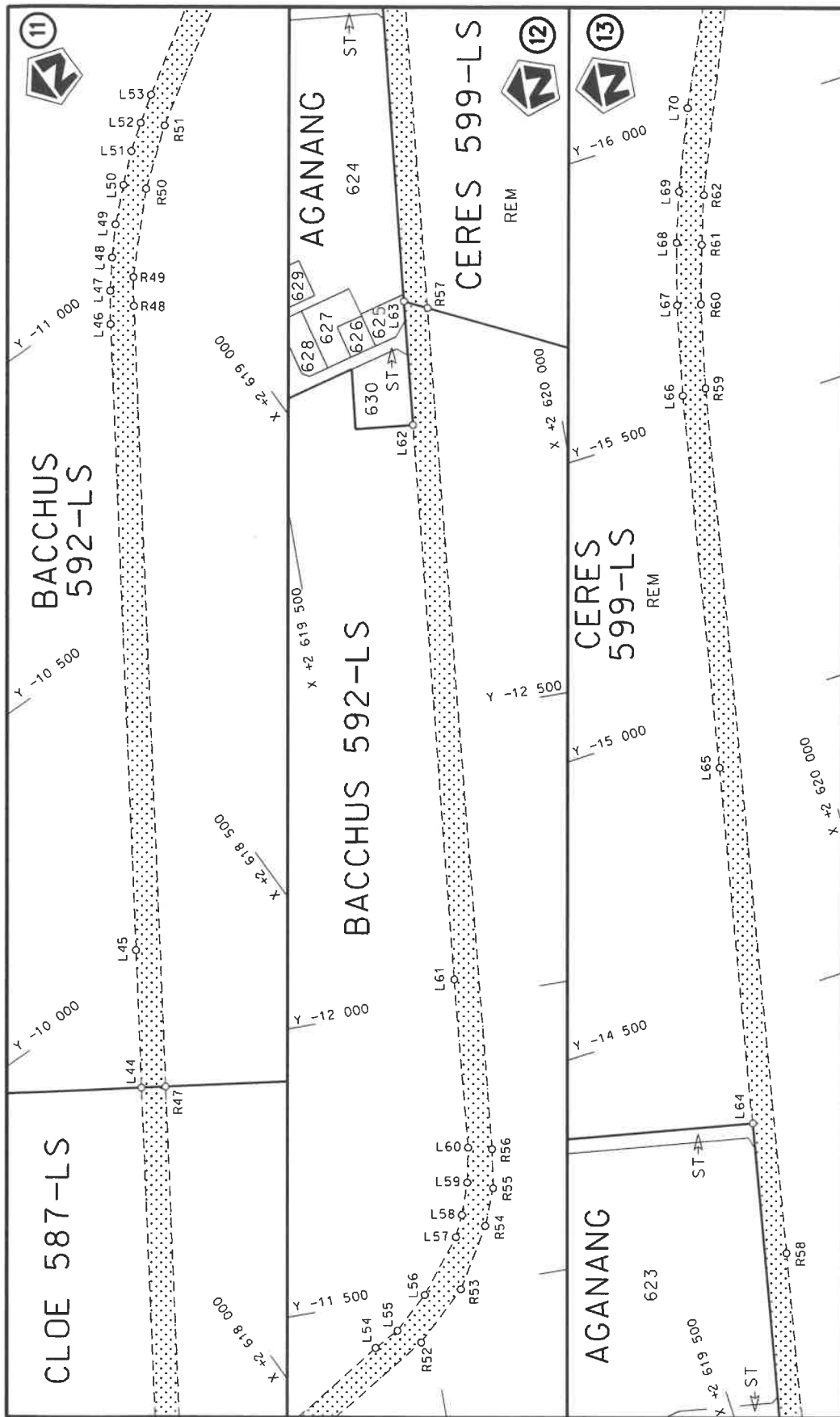
Die Suid Afrikaanse Nasionale Padagentskap MSB Bpk The South African National Roads Agency SOC Ltd	Die figuur getoon The figure shown	<div data-bbox="1284 1064 1380 1220" data-label="Image"> </div>	steldie padreserwe voor van 'n gedeelte represents the road reserve of a portion van Nasionale Roete R567 Seksie of National Route Section	Vel Sheet 1 van 15 Plan P1179/19
---	---------------------------------------	---	---	--

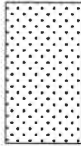


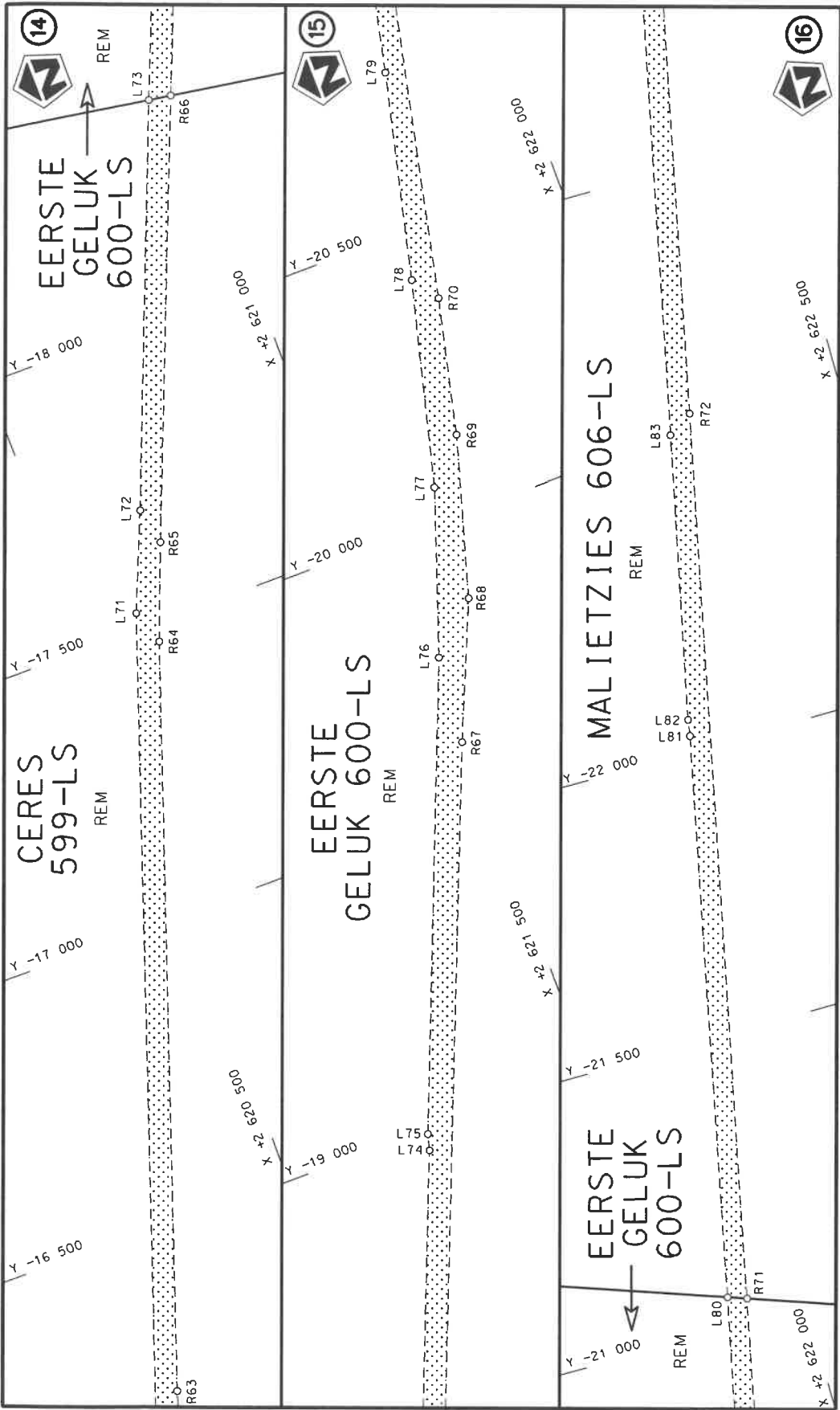





Die Suid Afrikaanse Nasionale Padagentskap MSB Bpk The South African National Roads Agency SOC Ltd	Die figuur getoon The figure shown	<div data-bbox="1292 1075 1372 1220" data-label="Image"> </div> steldie padreserwe voor van 'n gedeelte represents the road reserve of a portion van Nasionale Roete R567 of National Route	Vel Sheet 4 of 15 Plan P1179/19
---	---------------------------------------	--	---------------------------------------

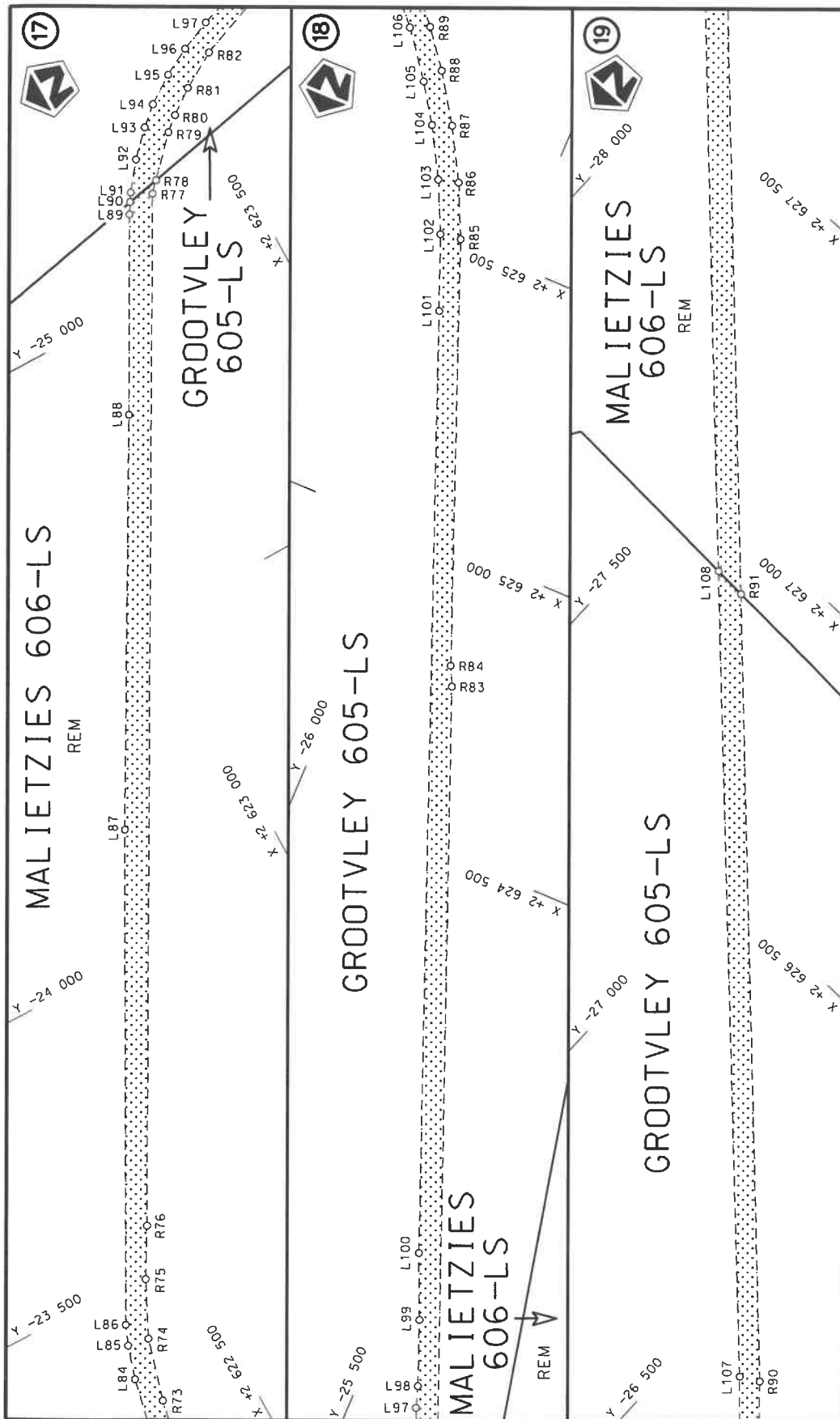


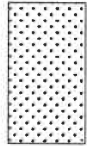
Die Suid Afrikaanse Nasionale Padagentskap MSB Bpk The South African National Roads Agency SOC Ltd	Die figuur getoon The figure shown		steldie padreserwe voor van 'n gedeelte represents the road reserve of a portion van Nasionale Roete R567 of National Route R567	1	Vel Sheet 5 of 15 Plan P1179/19
---	---------------------------------------	---	---	---	---------------------------------------

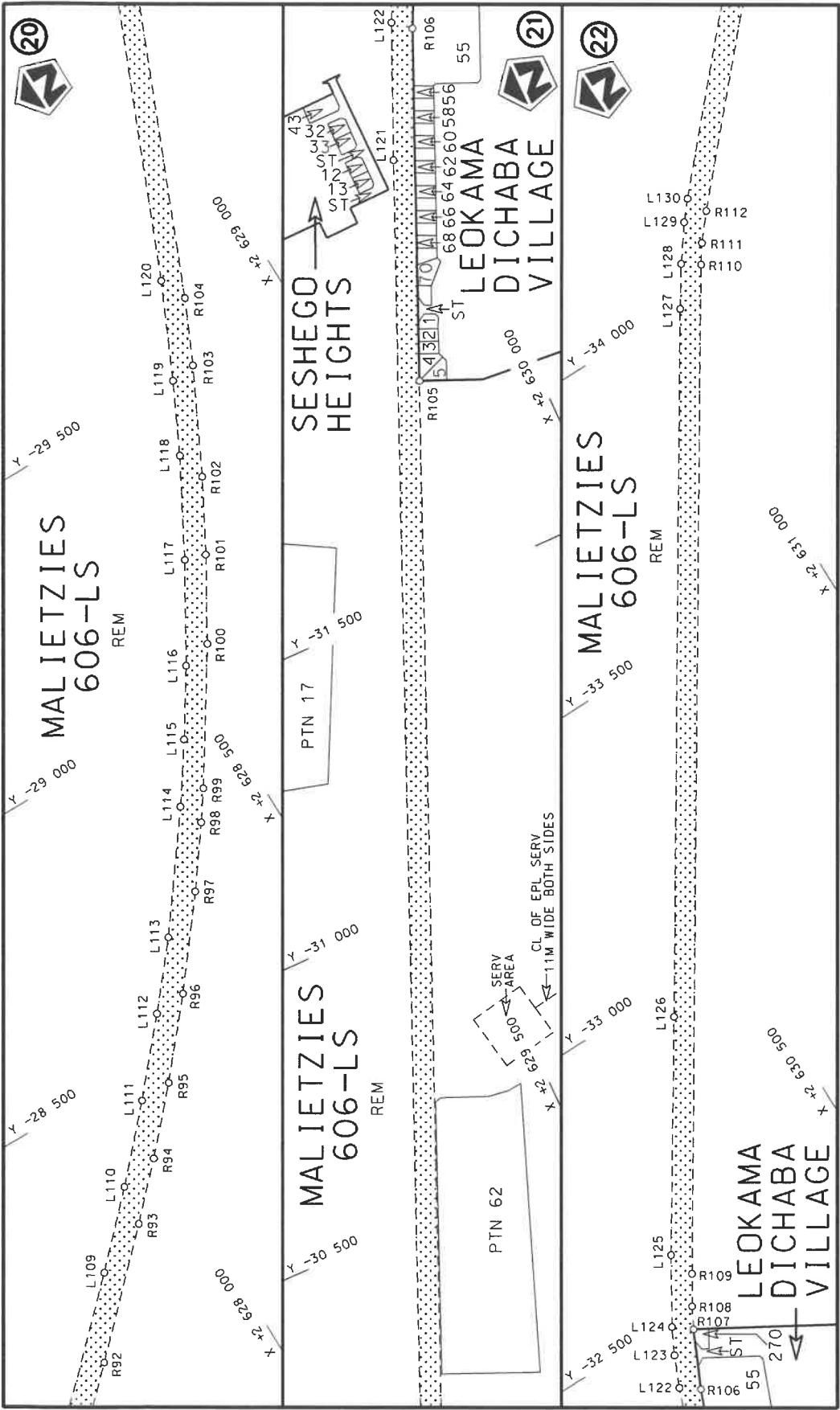


Die Suid Afrikaanse Nasionale Padagentskap MSB Bpk The South African National Roads Agency SOC Ltd	Die figuur getoon The figure shown		1	stelt die padreserwe voor van 'n gedeelte represents the road reserve of a portion van Nasionale Roete R567 of National Route	Vel Sheet 6 of 15	Plan P1179/19

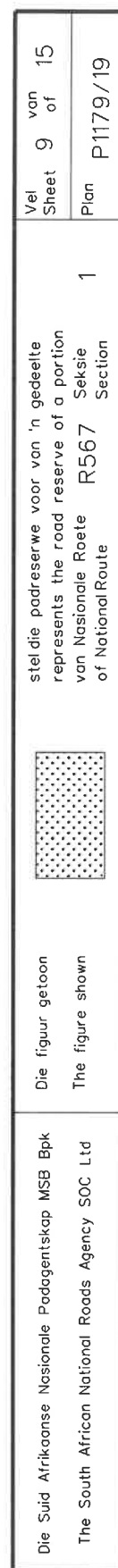


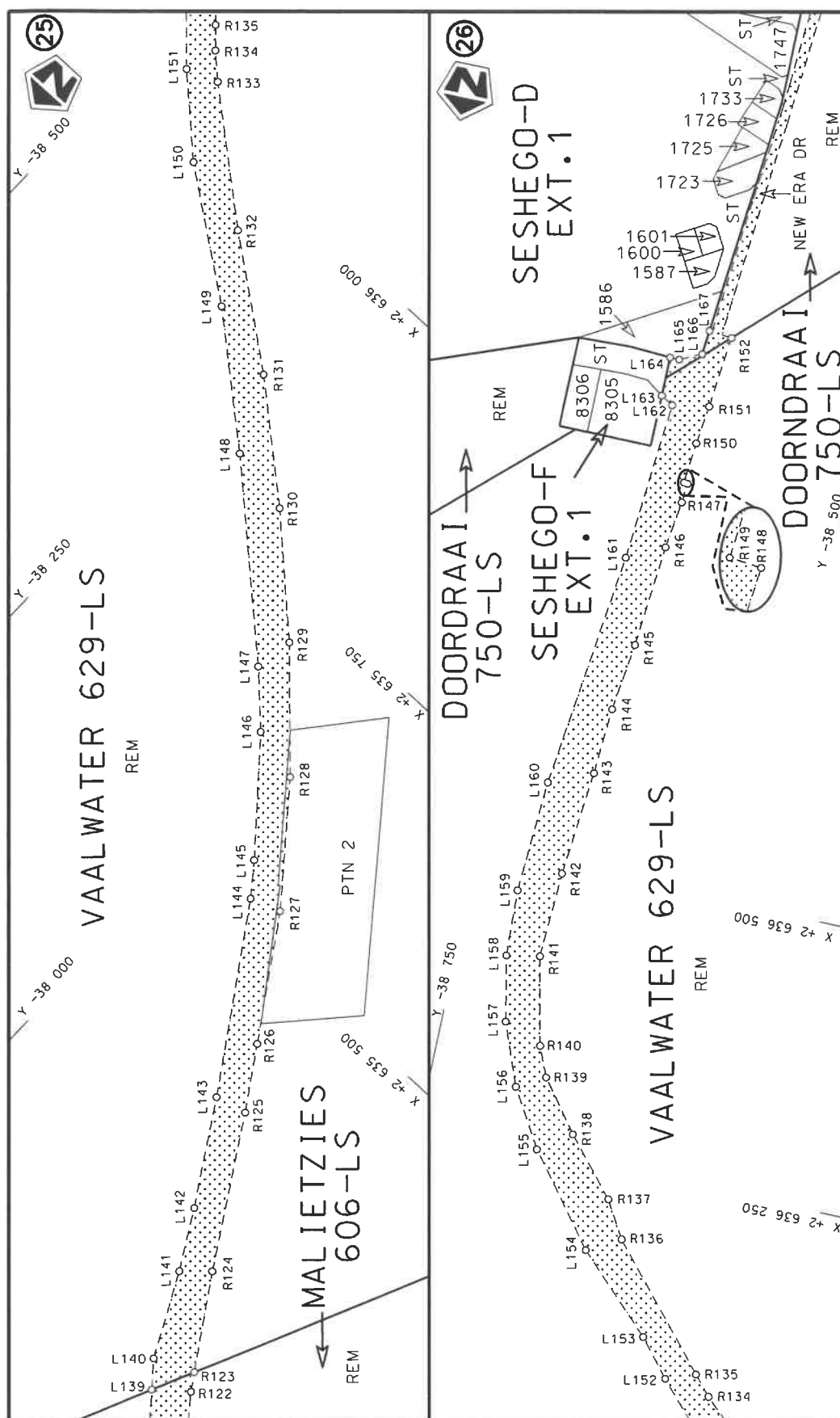


Die Suid Afrikaanse Nasionale Padagentskap MSB Bpk The South African National Roads Agency SOC Ltd	Die figuur getoon The figure shown	 stel die padreserwe voor van 'n gedeelte represents the road reserve of a portion van Nasionale Roete R567 of National Route R567	Vel Sheet 7 of 15 Plan P1179/19
---	---------------------------------------	---	---------------------------------------

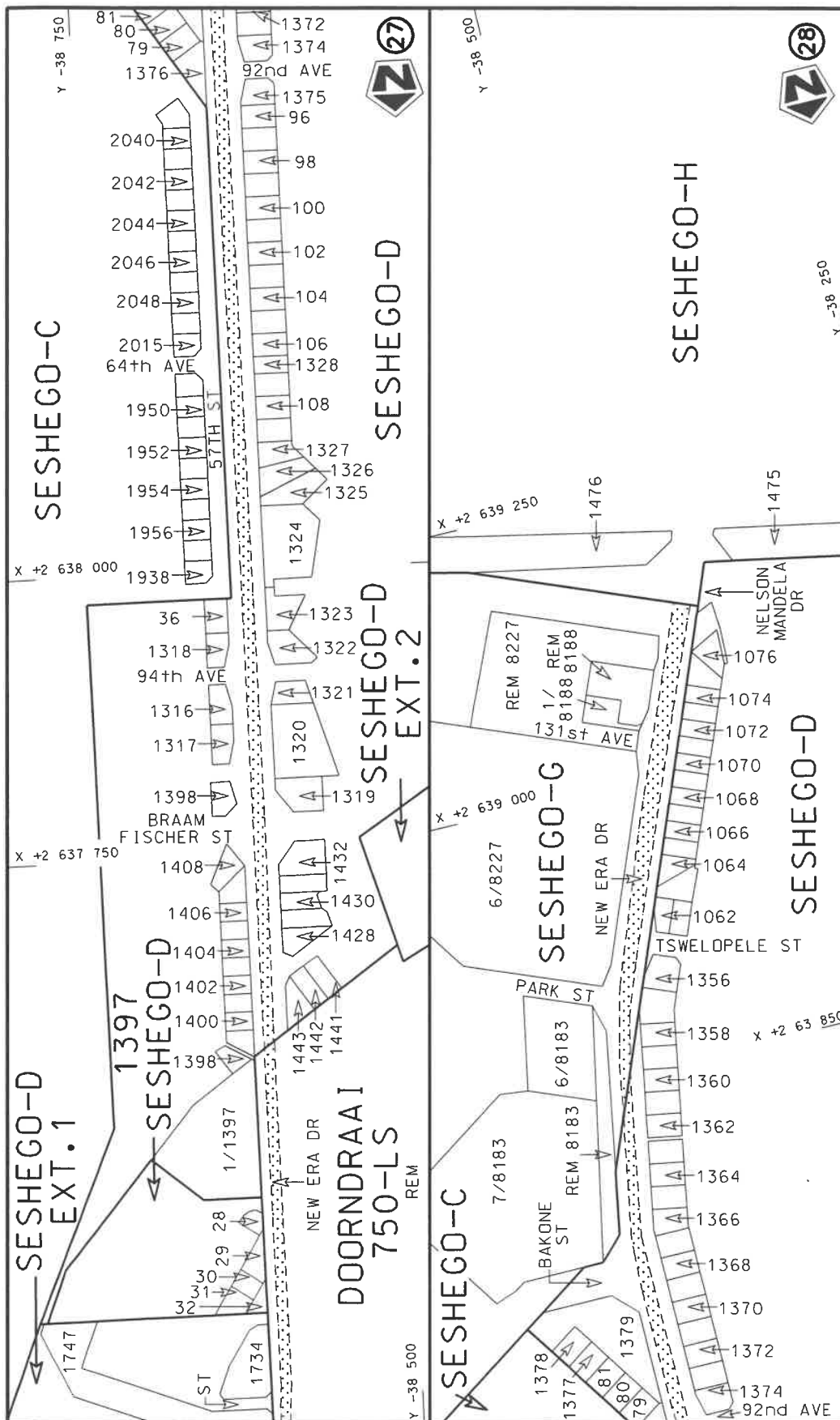


Vel Sheet 8 of 15	1	steldie padreserwe voor van 'n gedeelte represents the road reserve of a portion van Nasionale Roete R567 Seksie of National Route Section	Die Suid Afrikaanse Nasionale Padagentskap MSB Bpk The South African National Roads Agency SOC Ltd
Plan P1179/19		Die figuur getoon The figure shown	





Die Suid Afrikaanse Nasionale Padagentskap MSB Bpk The South African National Roads Agency SOC Ltd	Die figuur getoon The figure shown	stel die padreserwe voor van 'n gedeelte represents the road reserve of a portion van Nasionale Roete R567 Sekse of National Route R567 Section	Vel Sheet 10 of 15 Plan P1179/19
---	---------------------------------------	--	--



Vel Sheet 11 of 15	steldie podreserwe voor van 'n gedeelte represents the road reserve of a portion van Nasionale Roete R567 of National Route of National Route	Die figuur getoon The figure shown	Die Suid Afrikaanse Nasionale Podagentskap MSB Bpk The South African National Roads Agency SOC Ltd
Plan P1179/19	1	1	1

PADRESERWE KOÖRDINATE / ROAD RESERVE CO-ORDINATES						
LINKERKANT/LEFT HAND SIDE				REGTERKANT/RIGHT HAND SIDE		
	Y	X	WG 29°		Y	X
L1	12 055.78	2 621 506.40		R1	12 045.19	2 621 547.53
L2	11 899.73	2 621 410.79		R2	11 888.26	2 621 453.46
L3	10 918.37	2 620 809.49		R3	10 642.32	2 620 706.64
L4	9 621.62	2 620 017.85		R4	10 632.23	2 620 700.62
L5	8 701.91	2 619 481.11		R5	7 684.72	2 618 933.75
L6	7 488.53	2 618 766.83		R6	7 359.99	2 618 739.09
L7	7 372.82	2 618 706.48		R7	7 328.32	2 618 725.66
L8	6 874.11	2 618 446.37		R8	4 309.17	2 617 169.37
L9	4 373.91	2 617 158.13		R9	4 231.70	2 617 129.43
L10	4 257.78	2 617 096.61		R10	4 201.31	2 617 112.83
L11	4 213.98	2 617 073.40		R11	4 149.29	2 617 079.17
L12	4 143.93	2 617 027.61		R12	4 045.93	2 617 003.90
L13	4 048.88	2 616 957.48		R13	3 969.52	2 616 936.12
L14	3 989.43	2 616 903.26		R14	3 886.75	2 616 851.87
L15	2 970.97	2 615 845.93		R15	2 934.57	2 615 864.24
L16	1 739.43	2 614 615.29		R16	2 156.48	2 615 086.92
L17	1 630.78	2 614 522.34		R17	1 983.26	2 614 910.07
L18	1 528.17	2 614 465.46		R18	1 786.03	2 614 714.13
L19	1 450.81	2 614 441.05		R19	1 695.17	2 614 627.26
L20	1 352.84	2 614 423.00		R20	1 624.91	2 614 569.62
L21	1 254.42	2 614 417.94		R21	1 559.55	2 614 531.35
L22	1 231.88	2 614 418.73		R22	1 523.86	2 614 513.06
L23	1 185.30	2 614 422.92		R23	1 445.71	2 614 484.13
L24	1 145.61	2 614 429.09		R24	1 380.52	2 614 468.58
L25	998.65	2 614 460.46		R25	1 338.86	2 614 462.24
L26	912.99	2 614 484.90		R26	1 277.33	2 614 457.68
L27	-1 092.38	2 614 918.98		R27	1 231.95	2 614 458.32
L28	-1 438.18	2 614 978.90		R28	1 175.30	2 614 464.41
L29	-1 468.51	2 614 971.76		R29	813.71	2 614 539.08
L30	-1 471.45	2 614 984.25		R30	-524.18	2 614 833.16
L31	-1 642.78	2 615 011.37		R31	-1 110.98	2 614 958.96
L32	-2 910.83	2 615 161.74		R32	-1 263.52	2 614 986.05
L33	-3 762.45	2 615 270.76		R33	-1 437.71	2 615 014.84
L34	-5 764.94	2 615 527.04		R34	-1 455.41	2 615 033.03
L35	-5 815.05	2 615 539.65		R35	-1 484.54	2 615 037.78
L36	-5 848.75	2 615 549.97		R36	-1 520.77	2 615 028.57
L37	-5 921.75	2 615 576.43		R37	-1 655.20	2 615 048.16
L38	-5 979.36	2 615 601.36		R38	-1 686.12	2 615 052.67
L39	-6 076.36	2 615 654.43		R39	-1 757.83	2 615 070.36
L40	-6 732.49	2 616 051.09		R40	-5 724.37	2 615 559.41
L41	-7 332.61	2 616 413.89		R41	-5 776.48	2 615 570.05
L42	-7 564.27	2 616 557.34		R42	-5 813.84	2 615 577.68
L43	-7 864.57	2 616 756.04		R43	-5 902.89	2 615 609.27
L44	-9 843.64	2 618 079.32		R44	-5 944.34	2 615 629.34
L45	-10 045.82	2 618 214.55		R45	-6 595.99	2 616 018.49
L46	-10 960.77	2 618 825.73		R46	-7 550.72	2 616 598.91
L47	-11 008.37	2 618 859.69		R47	-9 820.41	2 618 114.42
L48	-11 053.81	2 618 896.49		R48	-10 962.87	2 618 877.63
L49	-11 097.38	2 618 935.52		R49	-11 004.26	2 618 906.68
L50	-11 145.10	2 618 987.51		R50	-11 116.72	2 619 015.88
L51	-11 185.14	2 619 033.41		R51	-11 187.17	2 619 106.98
				Vel Sheet 12	Van of 15	P1179/19



PADRESERVE KOÖRDINATE / ROAD RESERVE CO-ORDINATES									
LINKERKANT/LEFT HAND SIDE					REGTERKANT/RIGHT HAND SIDE				
	Y		X	WG 29°		Y		X	
L52	-11 215.60	2	619	076.03	R52	-11 417.84	2	619	479.77
L53	-11 244.73	2	619	119.56	R53	-11 498.34	2	619	563.98
L54	-11 421.72	2	619	399.75	R54	-11 601.14	2	619	624.72
L55	-11 445.23	2	619	442.57	R55	-11 664.11	2	619	649.76
L56	-11 499.24	2	619	500.36	R56	-11 731.90	2	619	659.85
L57	-11 590.08	2	619	571.02	R57	-13 207.38	2	619	801.25
L58	-11 626.75	2	619	588.21	R58	-14 006.64	2	619	879.41
L59	-11 681.56	2	619	606.99	R59	-15 526.37	2	620	022.75
L60	-11 741.82	2	619	618.94	R60	-15 672.92	2	620	042.08
L61	-12 037.23	2	619	645.92	R61	-15 775.27	2	620	063.01
L62	-13 009.25	2	619	741.29	R62	-15 860.22	2	620	082.55
L63	-13 225.83	2	619	762.76	R63	-16 171.06	2	620	178.03
L64	-14 241.05	2	619	863.40	R64	-17 424.36	2	620	613.30
L65	-14 867.30	2	619	923.24	R65	-17 588.15	2	620	676.61
L66	-15 521.23	2	619	980.92	R66	-18 319.64	2	620	969.82
L67	-15 679.05	2	620	000.82	R67	-19 621.60	2	621	495.01
L68	-15 787.02	2	620	020.05	R68	-19 855.79	2	621	594.89
L69	-15 874.58	2	620	040.82	R69	-20 134.00	2	621	676.03
L70	-16 015.42	2	620	082.62	R70	-20 370.84	2	621	730.57
L71	-17 485.25	2	620	592.67	R71	-21 048.31	2	621	875.36
L72	-17 653.10	2	620	663.15	R72	-22 583.68	2	622	203.50
L73	-18 325.83	2	620	930.48	R73	-23 304.73	2	622	356.96
L74	-18 965.37	2	621	187.79	R74	-23 412.03	2	622	387.41
L75	-18 993.41	2	621	195.19	R75	-23 506.33	2	622	433.48
L76	-19 775.94	2	621	508.90	R76	-23 587.49	2	622	480.34
L77	-20 060.35	2	621	606.83	R77	-25 172.04	2	623	356.96
L78	-20 417.12	2	621	697.47	R78	-25 189.64	2	623	373.40
L79	-20 776.35	2	621	781.80	R79	-25 252.92	2	623	432.53
L80	-21 059.91	2	621	842.51	R80	-25 273.96	2	623	456.82
L81	-22 035.30	2	622	049.23	R81	-25 305.02	2	623	499.27
L82	-22 063.65	2	622	053.71	R82	-25 341.75	2	623	561.29
L83	-22 556.33	2	622	160.59	R83	-25 818.54	2	624	775.89
L84	-23 360.83	2	622	332.72	R84	-25 834.39	2	624	808.88
L85	-23 418.46	2	622	350.55	R85	-26 105.92	2	625	505.61
L86	-23 452.54	2	622	364.34	R86	-26 147.24	2	625	595.78
L87	-24 216.32	2	622	779.95	R87	-26 195.80	2	625	683.31
L88	-24 851.46	2	623	135.01	R88	-26 249.97	2	625	765.28
L89	-25 159.27	2	623	303.98	R89	-26 297.94	2	625	828.38
L90	-25 177.50	2	623	315.39	R90	-26 363.39	2	625	903.57
L91	-25 191.99	2	623	324.46	R91	-27 313.72	2	626	908.42
L92	-25 238.32	2	623	359.84	R92	-28 085.57	2	627	723.96
L93	-25 280.37	2	623	400.30	R93	-28 261.12	2	627	906.01
L94	-25 309.16	2	623	431.95	R94	-28 345.32	2	627	989.23
L95	-25 341.80	2	623	480.11	R95	-28 444.95	2	628	082.53
L96	-25 367.55	2	623	527.85	R96	-28 565.38	2	628	187.24
L97	-25 390.65	2	623	581.50	R97	-28 707.17	2	628	301.12
L98	-25 402.42	2	623	618.38	R98	-28 805.21	2	628	374.97
L99	-25 444.50	2	623	727.15	R99	-28 854.13	2	628	410.00
L100	-25 490.30	2	623	835.27	R100	-29 067.07	2	628	551.43
L101	-26 091.91	2	625	375.26	R101	-29 201.89	2	628	632.29
L102	-26 141.67	2	625	500.29	R102	-29 321.87	2	628	699.83
					<div> <div>Vel</div> <div>Sheet</div> </div> <div>13</div> <div> <div>Van</div> <div>of</div> </div> <div>15</div> <div>P1179/19</div>				

PADRESERWE KOÖRDINATE / ROAD RESERVE CO-ORDINATES					
LINKERKANT/LEFT HAND SIDE			REGTERKANT/RIGHT HAND SIDE		
	Y	X	WG 29°	Y	X
L103	-26 181.90	2 625 587.10		R103	-29 496.97 2 628 789.96
L104	-26 228.81	2 625 671.07		R104	-29 605.14 2 628 840.85
L105	-26 271.54	2 625 735.85		R105	-31 798.90 2 629 781.79
L106	-26 330.21	2 625 813.62		R106	-32 370.74 2 630 026.49
L107	-26 395.16	2 625 886.54		R107	-32 466.91 2 630 073.39
L108	-27 370.23	2 626 911.74		R108	-32 502.97 2 630 094.43
L109	-28 220.30	2 627 808.41		R109	-32 551.44 2 630 125.73
L110	-28 329.85	2 627 919.15		R110	-34 037.72 2 631 110.09
L111	-28 442.82	2 628 026.40		R111	-34 068.92 2 631 131.91
L112	-28 559.51	2 628 129.58		R112	-34 112.25 2 631 169.22
L113	-28 663.26	2 628 218.41		R113	-35 545.68 2 632 509.92
L114	-28 848.06	2 628 358.64		R114	-35 964.91 2 632 897.10
L115	-28 945.31	2 628 427.02		R115	-35 981.23 2 632 919.62
L116	-29 053.93	2 628 499.07		R116	-36 039.71 2 632 990.96
L117	-29 213.36	2 628 596.00		R117	-36 150.74 2 633 140.80
L118	-29 374.23	2 628 686.31		R118	-37 203.31 2 634 554.43
L119	-29 492.28	2 628 746.25		R119	-37 573.73 2 635 050.36
L120	-29 652.87	2 628 821.65		R120	-37 572.86 2 635 057.79
L121	-32 172.20	2 629 900.32		R121	-37 582.44 2 635 062.67
L122	-32 394.46	2 629 996.72		R122	-37 675.15 2 635 183.29
L123	-32 447.51	2 630 020.77		R123	-37 684.33 2 635 197.83
L124	-32 491.85	2 630 044.31		R124	-37 732.74 2 635 274.49
L125	-32 599.56	2 630 112.45		R125	-37 805.48 2 635 397.27
L126	-32 949.97	2 630 346.54		R126	-37 838.33 2 635 449.15
L127	-33 992.45	2 631 035.92		R127	-37 901.66 2 635 549.05
L128	-34 058.32	2 631 080.84		R128	-37 974.38 2 635 642.48
L129	-34 116.94	2 631 125.14		R129	-38 054.46 2 635 729.63
L130	-34 148.58	2 631 152.67		R130	-38 139.99 2 635 811.26
L131	-35 664.27	2 632 567.71		R131	-38 229.29 2 635 888.63
L132	-35 720.79	2 632 624.52		R132	-38 331.04 2 635 967.14
L133	-35 748.33	2 632 650.35		R133	-38 431.57 2 636 051.55
L134	-35 773.67	2 632 669.85		R134	-38 451.52 2 636 070.60
L135	-35 915.85	2 632 802.58		R135	-38 466.62 2 636 087.35
L136	-36 012.16	2 632 902.62		R136	-38 555.40 2 636 189.67
L137	-36 041.03	2 632 936.37		R137	-38 574.36 2 636 221.67
L138	-37 668.60	2 635 121.31		R138	-38 617.02 2 636 270.79
L139	-37 701.36	2 635 161.82		R139	-38 650.44 2 636 314.80
L140	-37 718.80	2 635 183.38		R140	-38 661.45 2 636 340.97
L141	-37 753.93	2 635 255.43		R141	-38 678.33 2 636 417.85
L142	-37 781.67	2 635 305.19		R142	-38 675.02 2 636 493.07
L143	-37 832.97	2 635 390.47		R143	-38 666.46 2 636 585.10
L144	-37 928.48	2 635 539.96		R144	-38 662.66 2 636 643.51
L145	-37 948.90	2 635 566.99		R145	-38 655.11 2 636 702.97
L146	-38 020.35	2 635 654.40		R146	-38 647.35 2 636 792.49
L147	-38 060.45	2 635 695.50		R147	-38 641.98 2 636 834.08
L148	-38 198.03	2 635 823.27		R148	-38 640.18 2 636 851.18
L149	-38 296.59	2 635 908.23		R149	-38 643.84 2 636 851.53
L150	-38 399.79	2 635 985.59		R150	-38 640.44 2 636 887.54
L151	-38 459.15	2 636 041.81		R151	-38 636.10 2 636 921.55
L152	-38 492.13	2 636 077.87		R152	-38 629.79 2 636 984.52
L153	-38 518.84	2 636 109.72			
			Vel Sheet	14 Van of 15	P1179/19



This gazette is also available free online at [www.gpwonline.co.za](http://www.gpwonline.co.za)