

---

**GOVERNMENT NOTICES • GOEWERMENTSKENNISGEWINGS**

---

**DEPARTMENT OF TRANSPORT**

NO. 6429

11 July 2025

**THE SOUTH AFRICAN NATIONAL ROADS  
AGENCY SOC LIMITED**Registration No: 1998/009584/30

---

**DECLARATION AMENDMENT OF NATIONAL ROAD R30 SECTION 3**

AMENDMENT OF DECLARATION No. 368 OF 2018.

By virtue of Section 40 (1)(b) of The South African National Roads Agency Limited and National Roads Act, 1998 (Act No. 7 of 1998), I hereby amend Declaration No. 368 of 2018 by substituting it in its entirety, with the accompanying sheets 1 to 8 of Plan No. P1168/19.

**(National Road R30 Section 3: Theunissen – R730 Intersection)**  

---

**MINISTER OF TRANSPORT**

DEPARTEMENT VAN VERVOER

NO. 6429

11 Julie 2025

**DIE SUID-AFRIKAANSE NASIONALE  
PADAGENTSKAP MSB BEPERK**

Registrasie No: 1998/009584/30

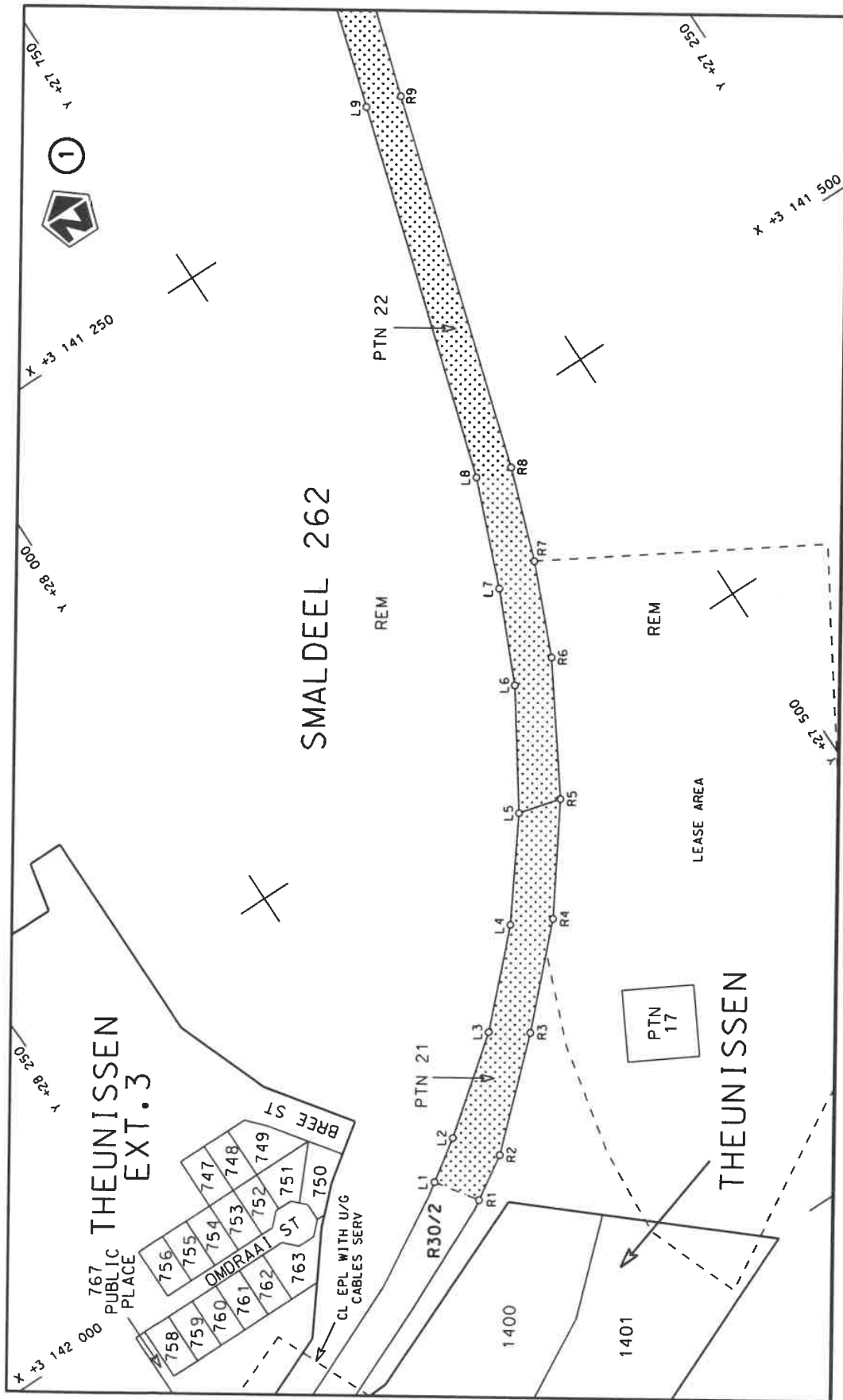
**VERKLARING WYSIGING VAN NASIONALE PAD R30 SEKSIE 3**


WYSIGING VAN VERKLARING No. 368 VAN 2018.

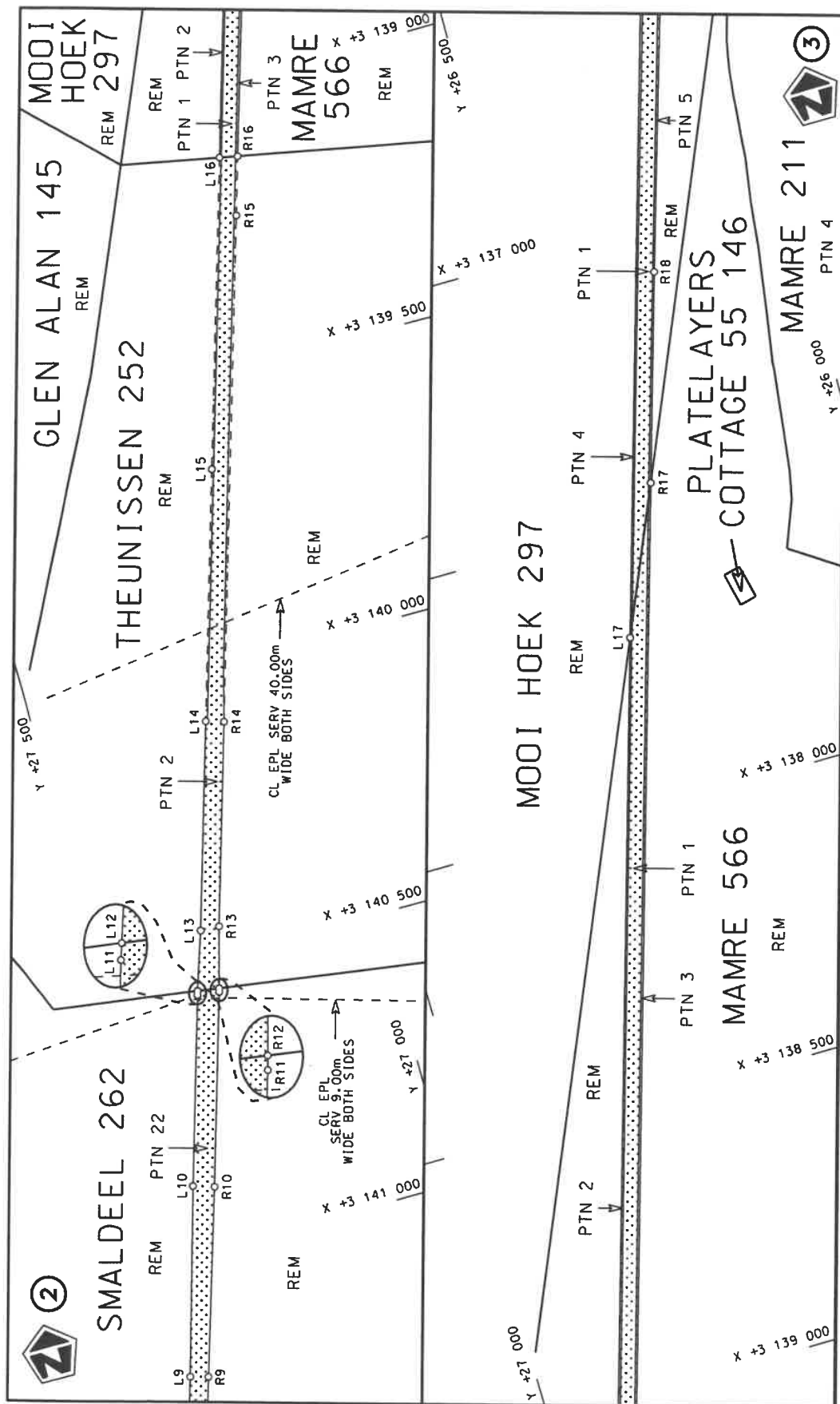
Kragtens Artikel 40(1)(b) van die Wet op die Suid-Afrikaanse Nasionale Padagentskap Beperk en op Nasionale Paaie, 1998 (Wet No. 7 van 1998), wysig ek hiermee Verklaring No. 368 van 2018 deur dit in sy geheel te vervang, met bygaande velle 1 tot 8 van Plan No. P1168/19.

**(Nasionale Pad R30 Seksie 3: Theunissen – R730 Interseksie)**

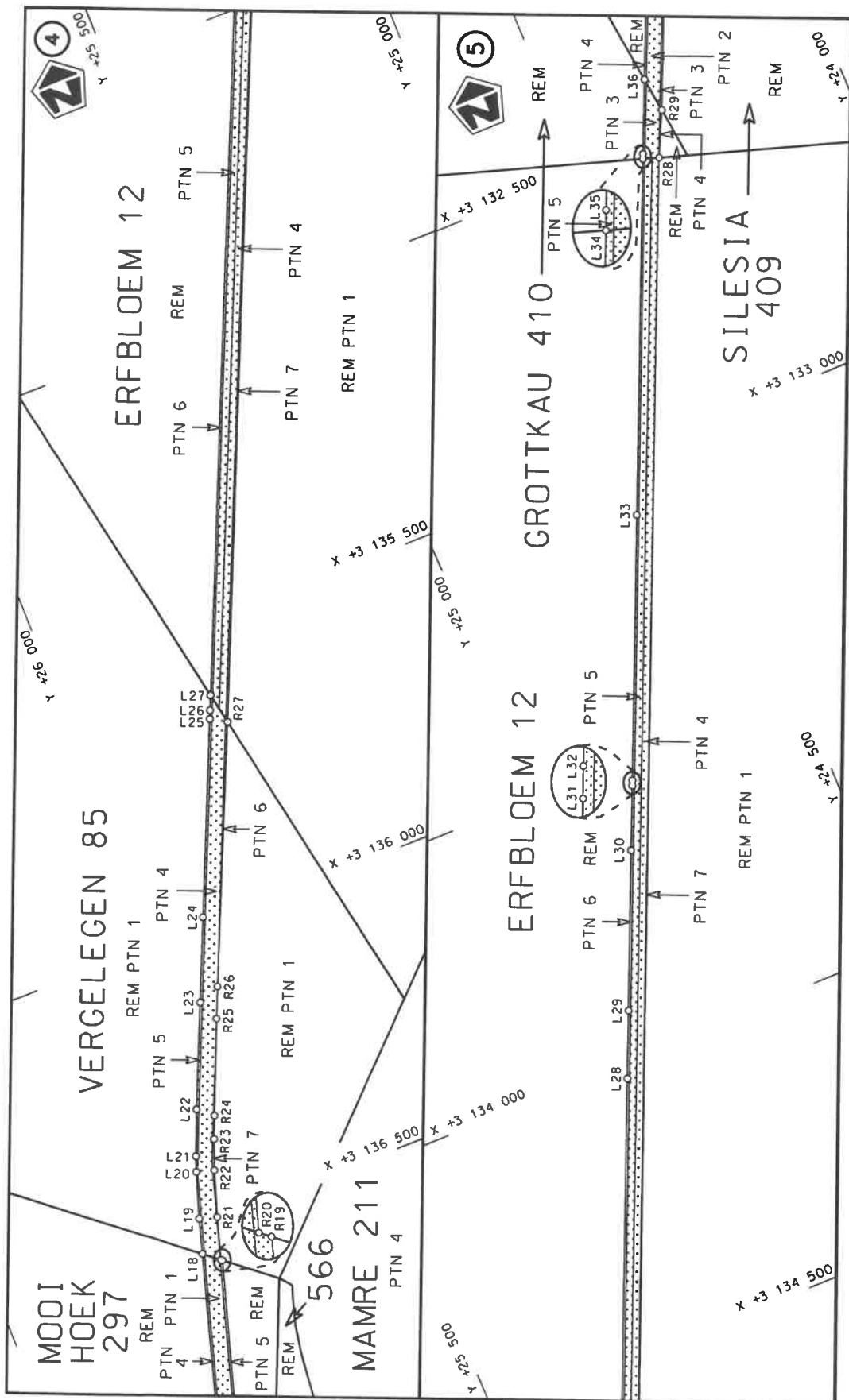
  
MINISTER VAN VERVOER



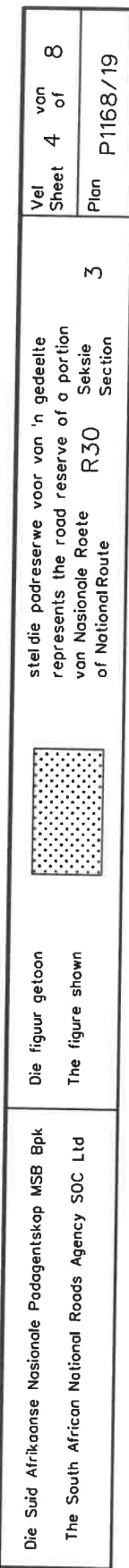
Die Suid Afrikaanse Nasionale Podogentskap MSB Bpk The South African National Roads Agency SOC Ltd	Die figuur getoon The figure shown		steldie podreserve voor van 'n gedeelte represents the road reserve of a portion van Nasionale Roete R30 of National Route of National Route	Vel Sheet	1 of	8
				Plan	P1168/19	3



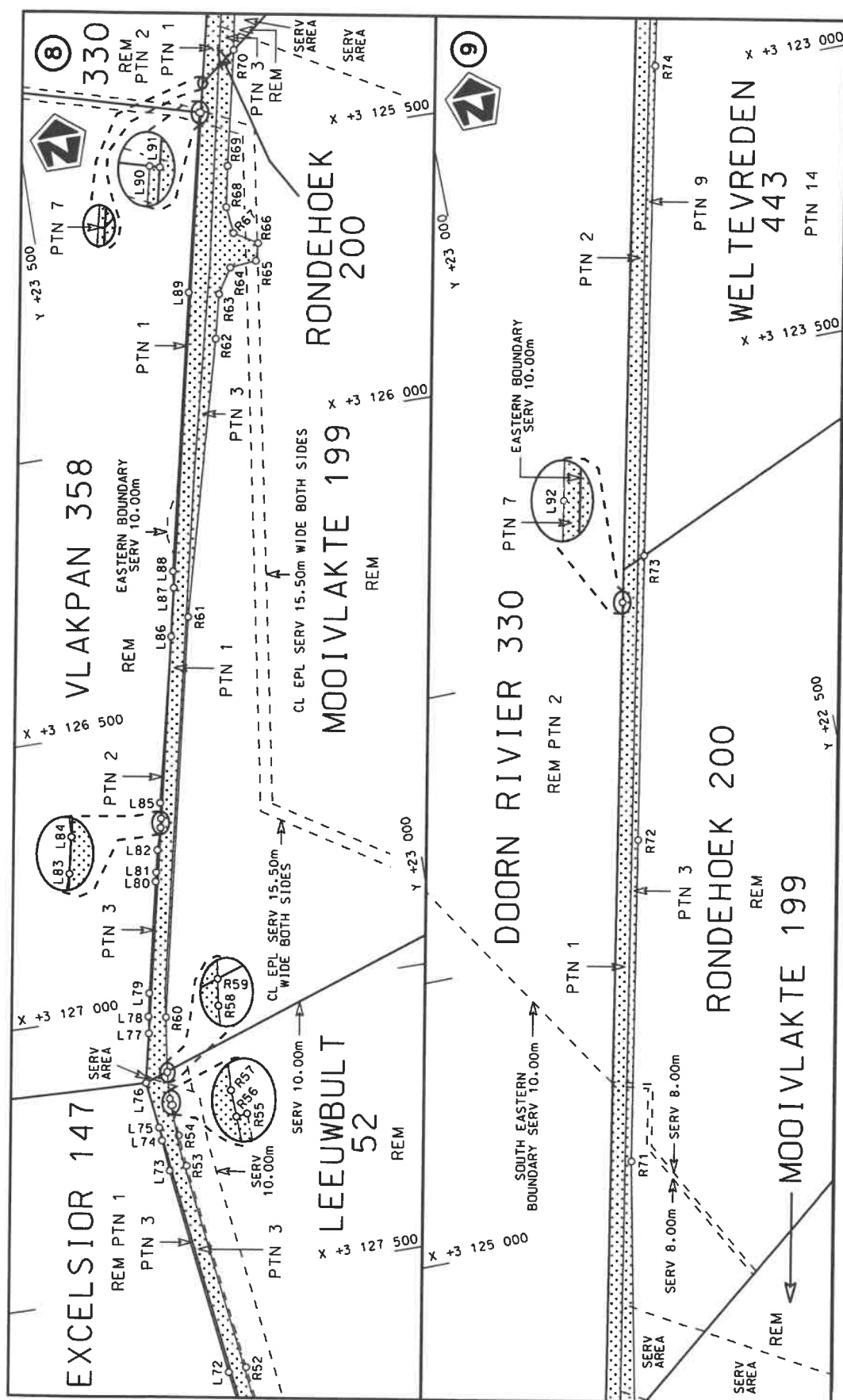
Die Suid Afrikaanse Nasionale Podogentskap MSB Bpk The South African National Roads Agency SOC Ltd	Die figuur getoon The figure shown	steldie podreserwe voor van 'n gedeelte represents the road reserve of a portion van Nasionale Roete R30 of National Route	Vel Sheet 2 of 8 Plan P1168/19
---	---------------------------------------	---	--------------------------------------




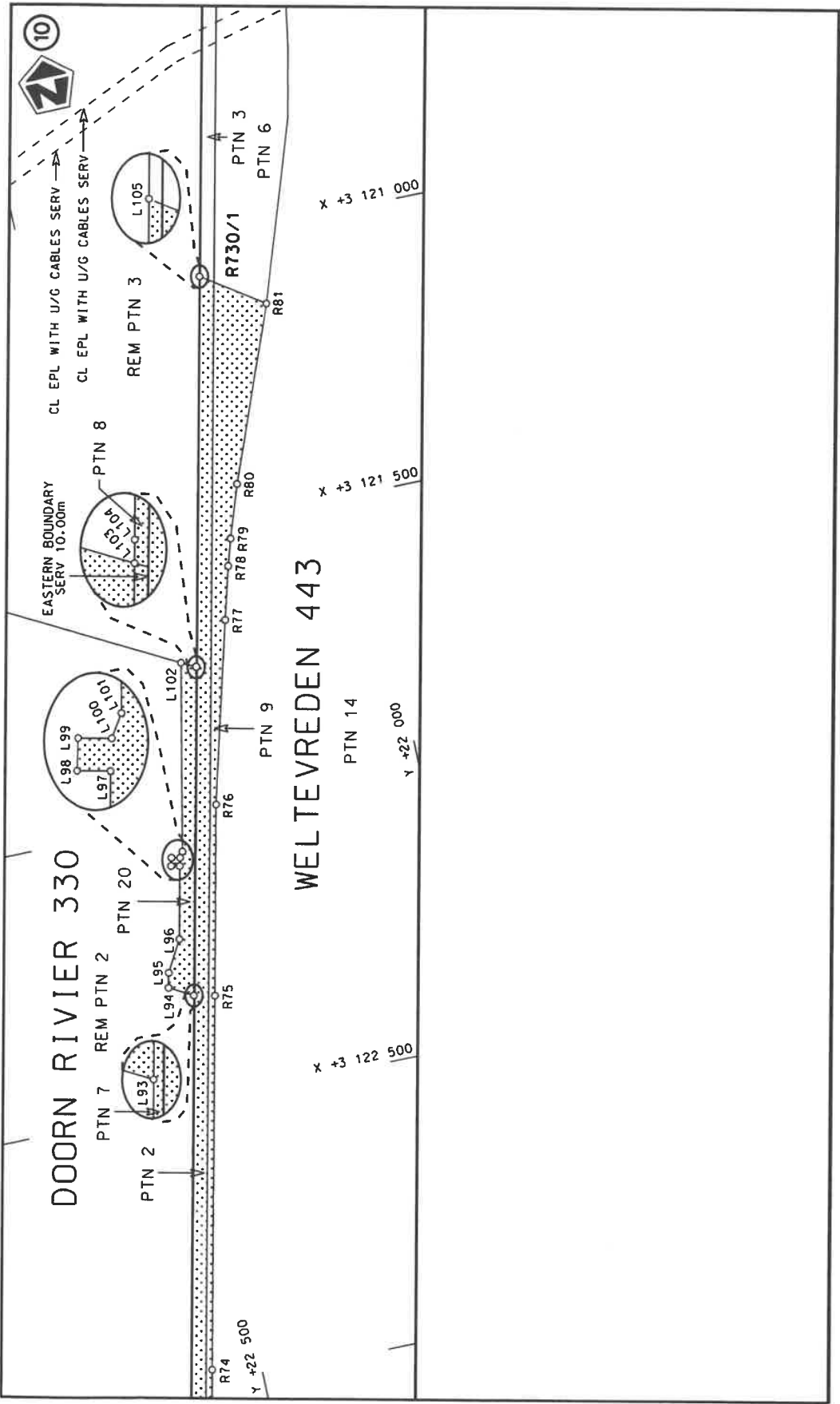
Die Suid Afrikaanse Nasionale Padagentskap MSB Bpk The South African National Roads Agency SOC Ltd	Die figuur getoon The figure shown	steldie padreserwe voor van 'n gedeelte represents the road reserve of a portion van Nasionale Roete R30 of National Route	Vel Sheet 3 of 8	Plan P1168/19
		3 R30 Section		







Die Suid Afrikaanse Nasionale Podogentskap MSB Bpk	Die figuur getoon		steldie padreserwe voor van 'n gedeelte represents the road reserve of a portion von Nasionale Roete R30 of National Route	3	Vel	5	von	8
The South African National Roads Agency SOC Ltd	The figure shown				Sheet		of	
					Plan	P1168/19		



Die Suid Afrikaanse Nasionale Padagentskap MSB Bpk The South African National Roads Agency SOC Ltd	Die figuur getoon The figure shown		stel die padreserwe voor van 'n gedeelte represents the road reserve of a portion van Nasionale Roete R30 of National Route	3	Vel Sheet 6 of 8	Plan P1168/19
---	---------------------------------------	--	--	---	------------------------	------------------



PADRESERVE KOÖRDINATE / ROAD RESERVE CO-ORDINATES						
LINKERKANT/LEFT HAND SIDE				REGTERKANT/RIGHT HAND SIDE		
	Y	X	WG 27°		Y	X
L1	28 011.98	3 142 045.43		R1	27 987.84	3 142 080.46
L2	27 976.79	3 142 021.18		R2	27 950.45	3 142 056.71
L3	27 898.27	3 141 959.16		R3	27 867.65	3 141 979.89
L4	27 829.52	3 141 889.31		R4	27 794.77	3 141 905.51
L5	27 768.29	3 141 809.69		R5	27 730.45	3 141 819.40
L6	27 708.94	3 141 712.10		R6	27 667.72	3 141 709.11
L7	27 672.99	3 141 632.22		R7	27 633.46	3 141 628.63
L8	27 635.63	3 141 537.95		R8	27 604.94	3 141 547.21
L9	27 536.20	3 141 207.67		R9	27 505.56	3 141 216.35
L10	27 441.31	3 140 881.20		R10	27 405.16	3 140 892.39
L11	27 343.38	3 140 555.21		R11	27 305.12	3 140 559.77
L12	27 341.02	3 140 548.01		R12	27 303.40	3 140 553.49
L13	27 307.42	3 140 445.87		R13	27 274.24	3 140 446.98
L14	27 199.68	3 140 088.65		R14	27 169.10	3 140 097.90
L15	27 070.54	3 139 659.17		R15	26 909.40	3 139 235.54
L16	26 910.82	3 139 128.54		R16	26 879.26	3 139 134.67
L17	26 480.01	3 137 697.16		R17	26 369.81	3 137 442.06
L18	26 133.57	3 136 546.13		R18	26 261.72	3 137 082.96
L19	26 115.31	3 136 485.41		R19	26 104.47	3 136 570.08
L20	26 088.87	3 136 405.60		R20	26 106.79	3 136 568.18
L21	26 079.11	3 136 379.36		R21	26 084.65	3 136 494.60
L22	26 046.97	3 136 301.72		R22	26 058.18	3 136 414.84
L23	25 970.00	3 136 126.45		R23	26 038.10	3 136 362.55
L24	25 908.56	3 135 986.50		R24	26 021.77	3 136 323.85
L25	25 765.67	3 135 661.43		R25	25 953.89	3 136 164.00
L26	25 759.36	3 135 647.03		R26	25 930.92	3 136 111.23
L27	25 748.65	3 135 622.67		R27	25 738.25	3 135 677.95
L28	25 048.41	3 134 028.93		R28	24 359.31	3 132 531.67
L29	24 999.42	3 133 917.53		R29	24 322.04	3 132 455.26
L30	24 883.90	3 133 654.52		R30	24 128.69	3 132 015.23
L31	24 837.25	3 133 548.81		R31	24 020.63	3 131 769.25
L32	24 833.40	3 133 539.85		R32	23 969.65	3 131 653.24
L33	24 642.56	3 133 105.21		R33	23 842.82	3 131 364.56
L34	24 386.62	3 132 522.69		R34	23 819.95	3 131 313.04
L35	24 383.07	3 132 514.33		R35	23 672.60	3 130 977.66
L36	24 329.60	3 132 392.94		R36	23 483.04	3 130 546.24
L37	24 160.53	3 132 008.14		R37	23 290.90	3 130 108.92
L38	24 015.74	3 131 678.59		R38	23 260.59	3 130 030.48
L39	23 998.94	3 131 640.37		R39	23 237.49	3 129 949.63
L40	23 927.96	3 131 478.81		R40	23 221.78	3 129 867.03
L41	23 856.29	3 131 315.65		R41	23 220.36	3 129 850.59
L42	23 851.46	3 131 305.20		R42	23 213.78	3 129 783.24
L43	23 843.10	3 131 286.48		R43	23 213.20	3 129 699.16
L44	23 738.81	3 131 053.05		R44	23 218.63	3 129 633.94
L45	23 650.48	3 130 855.47		R45	23 220.18	3 129 615.36
L46	23 633.49	3 130 816.79		R46	23 258.44	3 129 300.73
L47	23 630.31	3 130 801.88		R47	23 288.65	3 129 052.25
L48	23 574.13	3 130 674.00		R48	23 324.73	3 128 755.60
L49	23 470.35	3 130 437.79		R49	23 366.08	3 128 415.49
L50	23 321.60	3 130 099.24		R50	23 391.22	3 128 208.77
L51	23 295.37	3 130 032.97		R51	23 437.47	3 127 828.49
				Vel Sheet	7 Van of 8	P1168/19

PADRESERWE KOÖRDINATE / ROAD RESERVE CO-ORDINATES						
LINKERKANT/LEFT HAND SIDE				REGTERKANT/RIGHT HAND SIDE		
	Y	X	WG 27°		Y	X
L52	23 269.10	3 129 942.86		R52	23 457.62	3 127 662.80
L53	23 255.72	3 129 875.29		R53	23 503.04	3 127 289.22
L54	23 253.83	3 129 864.37		R54	23 508.09	3 127 233.42
L55	23 251.07	3 129 840.89		R55	23 509.72	3 127 177.42
L56	23 247.43	3 129 805.92		R56	23 512.99	3 127 177.82
L57	23 246.42	3 129 780.36		R57	23 513.45	3 127 165.80
L58	23 245.18	3 129 748.73		R58	23 510.40	3 127 118.60
L59	23 244.36	3 129 728.10		R59	23 510.19	3 127 117.06
L60	23 244.64	3 129 720.95		R60	23 496.83	3 127 020.34
L61	23 245.07	3 129 714.45		R61	23 340.37	3 126 319.13
L62	23 245.15	3 129 712.18		R62	23 211.47	3 125 835.60
L63	23 245.52	3 129 702.80		R63	23 192.71	3 125 757.70
L64	23 246.71	3 129 672.01		R64	23 165.49	3 125 714.06
L65	23 252.31	3 129 616.26		R65	23 118.28	3 125 709.27
L66	23 290.20	3 129 304.59		R66	23 109.43	3 125 678.67
L67	23 356.60	3 128 758.62		R67	23 149.99	3 125 654.16
L68	23 357.54	3 128 750.87		R68	23 154.91	3 125 606.19
L69	23 410.71	3 128 313.57		R69	23 140.55	3 125 533.80
L70	23 422.98	3 128 212.64		R70	23 096.95	3 125 331.12
L71	23 472.70	3 127 803.81		R71	23 012.92	3 124 885.24
L72	23 489.37	3 127 666.66		R72	22 887.39	3 124 322.45
L73	23 534.80	3 127 293.09		R73	22 776.29	3 123 825.04
L74	23 539.92	3 127 237.30		R74	22 585.39	3 122 970.06
L75	23 540.77	3 127 213.55		R75	22 439.94	3 122 319.19
L76	23 550.81	3 127 130.82		R76	22 365.95	3 121 986.98
L77	23 531.48	3 127 044.11		R77	22 281.03	3 121 668.92
L78	23 527.25	3 127 014.05		R78	22 255.71	3 121 576.28
L79	23 519.02	3 126 972.89		R79	22 241.25	3 121 529.39
L80	23 475.38	3 126 777.34		R80	22 209.52	3 121 436.65
L81	23 471.79	3 126 761.22		R81	22 091.41	3 121 133.93
L82	23 463.06	3 126 722.08				
L83	23 451.07	3 126 683.37				
L84	23 447.48	3 126 667.26				
L85	23 444.59	3 126 639.39				
L86	23 376.46	3 126 348.63				
L87	23 357.44	3 126 263.32				
L88	23 354.18	3 126 234.08				
L89	23 245.29	3 125 746.09				
L90	23 175.11	3 125 431.48				
L91	23 172.20	3 125 432.29				
L92	22 830.63	3 123 899.61				
L93	22 475.93	3 122 311.15				
L94	22 516.54	3 122 288.74				
L95	22 510.66	3 122 262.41				
L96	22 479.98	3 122 207.79				
L97	22 451.68	3 122 080.45				
L98	22 466.34	3 122 077.18				
L99	22 462.74	3 122 063.04				
L100	22 448.08	3 122 066.31				
L101	22 441.58	3 122 056.21				
L102	22 373.10	3 121 727.27				
				LINKERKANT/LEFT HAND SIDE		
					Y	X
				L103	22 348.50	3 121 740.47
				L104	22 348.21	3 121 739.19
				L105	22 196.63	3 121 062.27
				Vel	8	Van
				Sheet	of	8
				P1168/19		