
GOVERNMENT NOTICES • GOEWERMENTSKENNISGEWINGS

DEPARTMENT OF TRANSPORT

NO. 6428

11 July 2025

**THE SOUTH AFRICAN NATIONAL ROADS
AGENCY SOC LIMITED**Registration No: 1998/009584/30

DECLARATION AMENDMENT OF NATIONAL ROAD R518 SECTION 4

AMENDMENT OF DECLARATION No. 538 OF 2014.

By virtue of section 40(1)(b) of the South African National Roads Agency Limited and the National Roads Act 1998 (Act No. 7 of 1998), I hereby amend Declaration No. 538 of 2014 by substituting paragraph A(VI) of the Schedule, being the descriptive declaration of the route from its intersection with National Road R518 Section 3 up to its intersection with National Road R37 Section 1, with the accompanying sheets 1 to 11 of Plan No. P992/17.

(National Road R518 Section 4: R518 Section 3 Intersection – R37 Section 1 Intersection)
MINISTER OF TRANSPORT

DEPARTEMENT VAN VERVOER

NO. 6428

11 Julie 2025

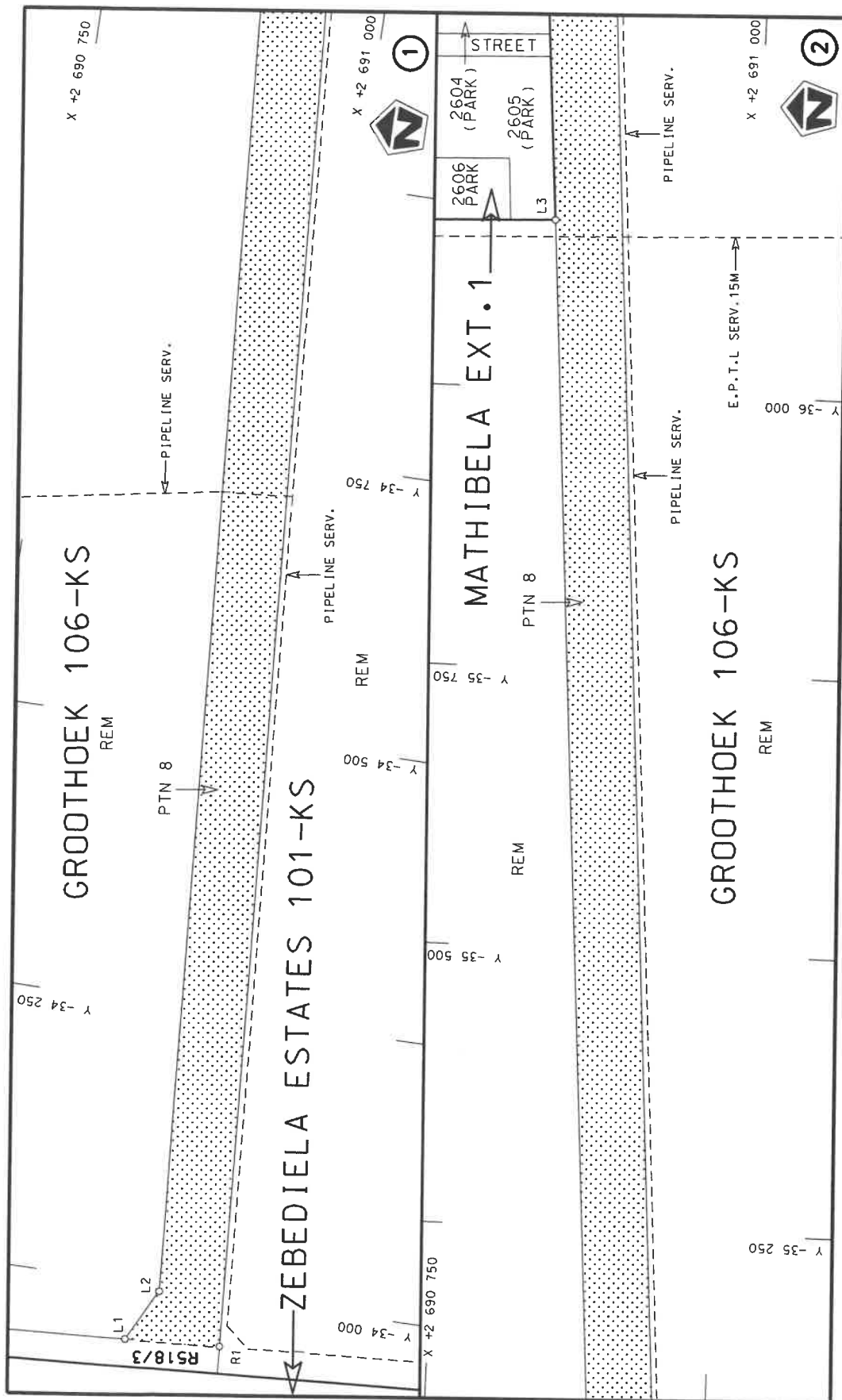
**DIE SUID-AFRIKAANSE NASIONALE
PADAGENTSKAP MSB BEPERK**Registrasie No: 1998/009584/30


VERKLARING WYSIGING VAN NASIONALE PAD R518 SEKSIE 4

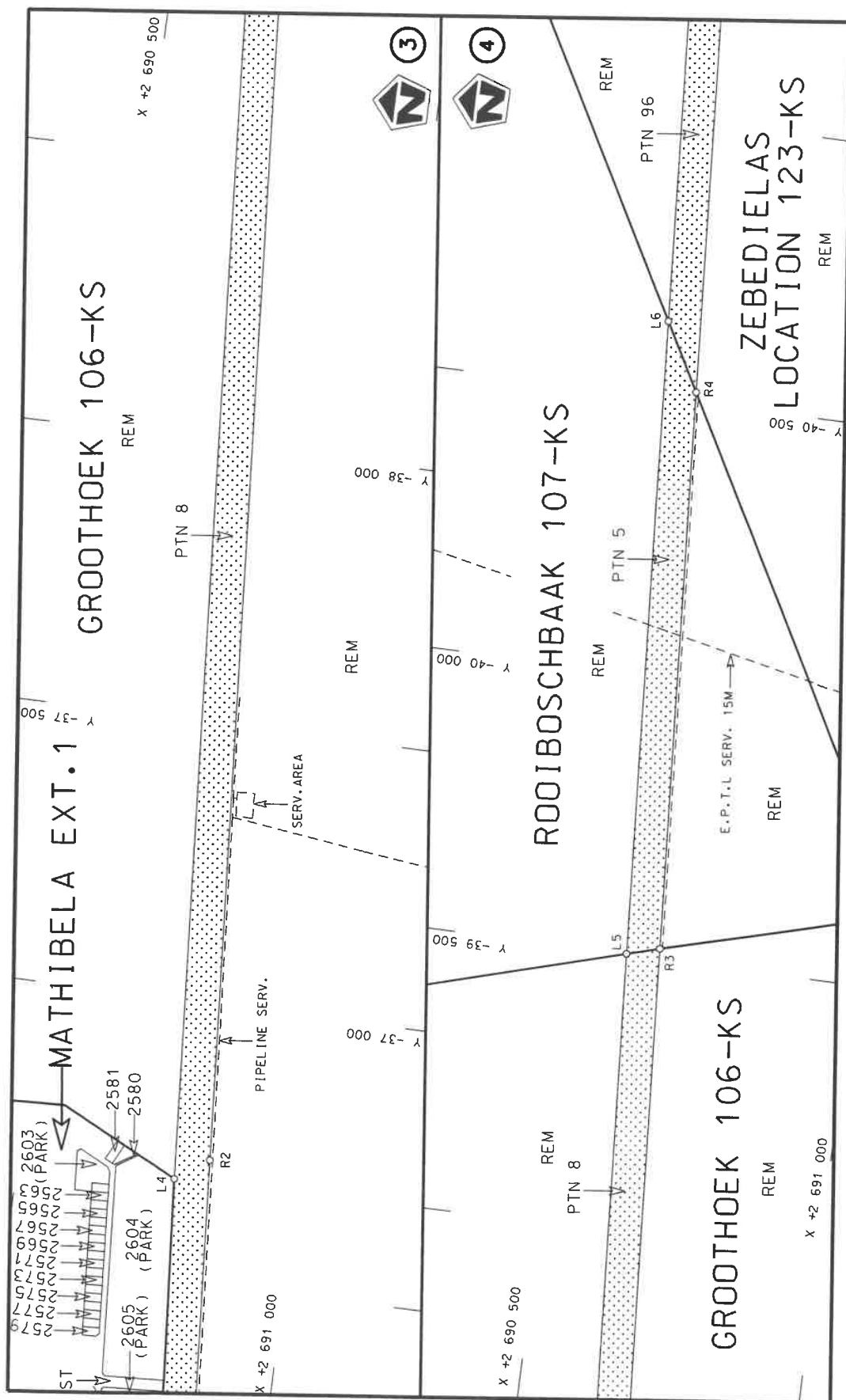
WYSIGING VAN VERKLARING No. 538 VAN 2014.

Kragtens Artikel 40(1)(b) van die Wet op die Suid-Afrikaanse Nasionale Padagentskap Beperk en op Nasionale Paaie Wet 1998 (Wet No. 7 van 1998), wysig ek hiermee Verklaring No. 538 van 2014 deur paragraaf A(VI) van die Skedule te vervang, synde die gedeelte van die beskrywende verklaring van die pad vanaf die interseksie met Nasionale Pad R518 Seksie 3 tot by die interseksie met Nasionale Pad R37 Seksie 1, met bygaande velle 1 tot 11 van Plan No. P992/17.

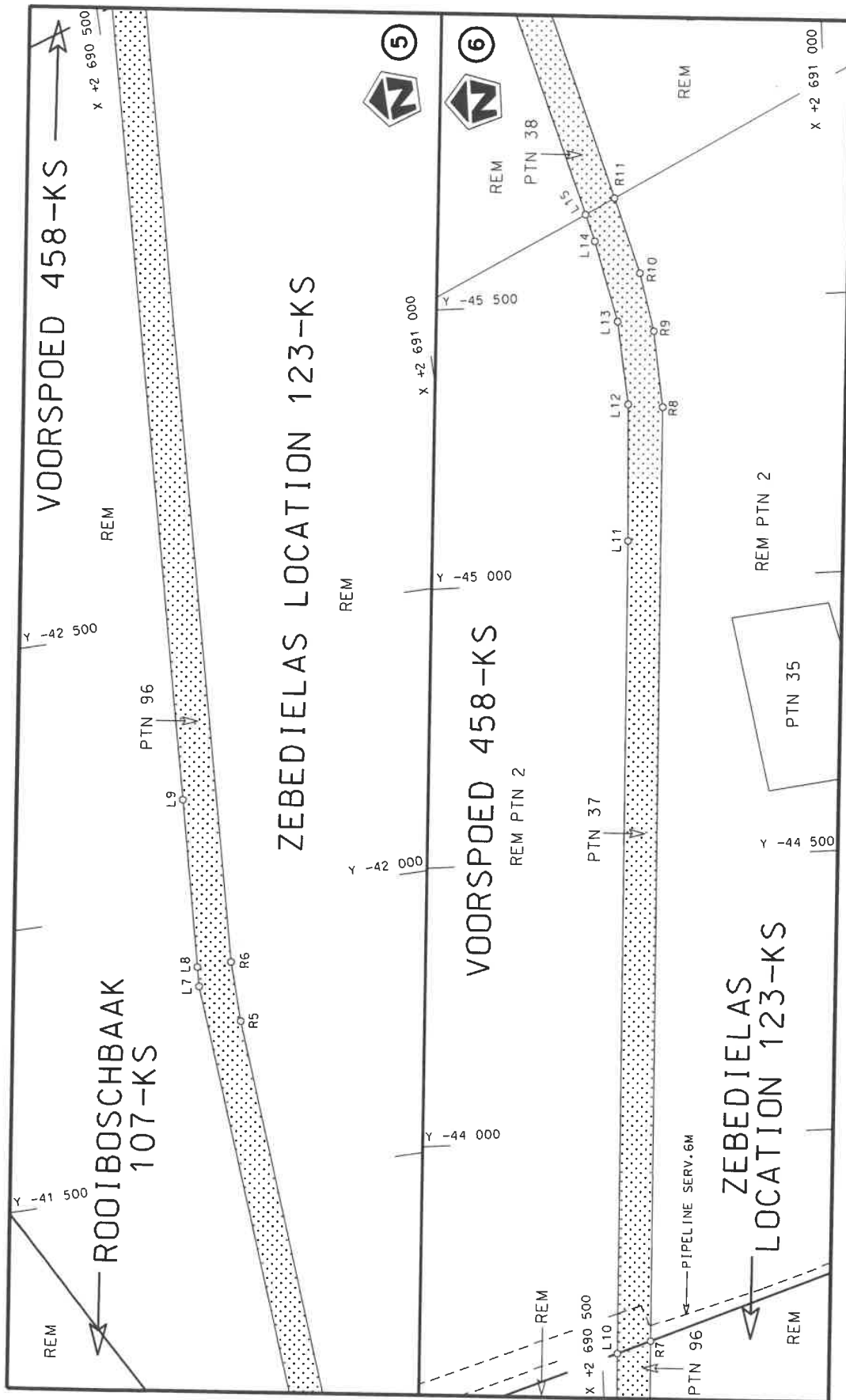
(Nasionale Pad R518 Seksie 4: R518 Seksie 3 Interseksie – R37 Seksie 1 Interseksie)
MINISTER VAN VERVOER



Die Suid Afrikaanse Nasionale Podagentskap MSB Bpk The South African National Roads Agency SOC Ltd	Die figuur getoon The figure shown		steldie padreserwe voor van 'n gedeelte represents the road reserve of a portion van Nasionale Roete R518 of National Route	4	Vel Sheet	1 of	11
					Plan	P992/17	

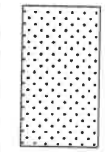


Die Suid Afrikaanse Nasionale Padagentskap MSB Bpk The South African National Roads Agency SOC Ltd	Die figuur getoon The figure shown		stel die padreserwe voor van 'n gedeelte represents the road reserve of a portion van Nasionale Roete of National Route	Vei Sheet 2 of 11	Plan P992/17
---	---------------------------------------	--	--	----------------------	-----------------



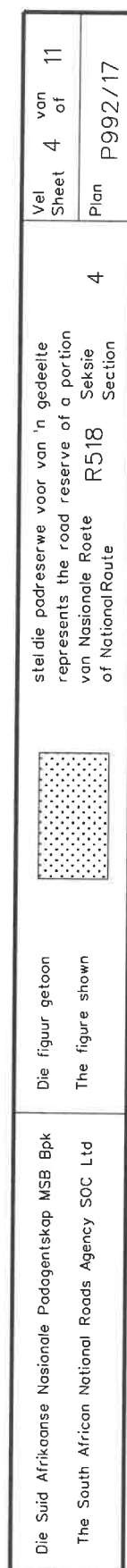
Die Suid Afrikaanse Nasionale Padagentskap MSB Bpk
The South African National Roads Agency SOC Ltd

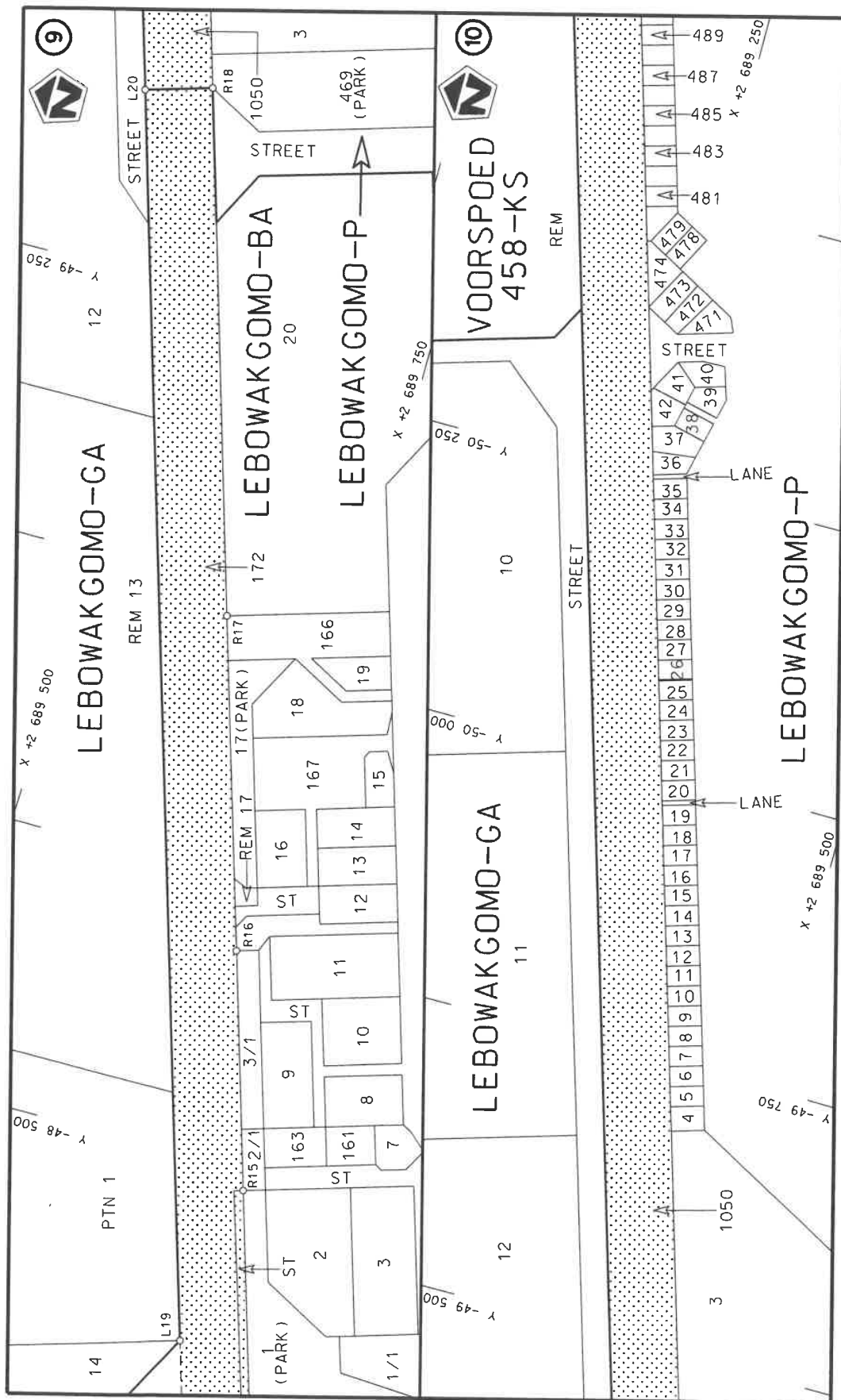
Die figuur getoon
The figure shown



stelt die padreserwe voor van 'n gedeelte
represents the road reserve of a portion
van Nasionale Roete R518 Seksie
of National Route Section

Vel 3 van 11
Sheet of
Plan P992/17





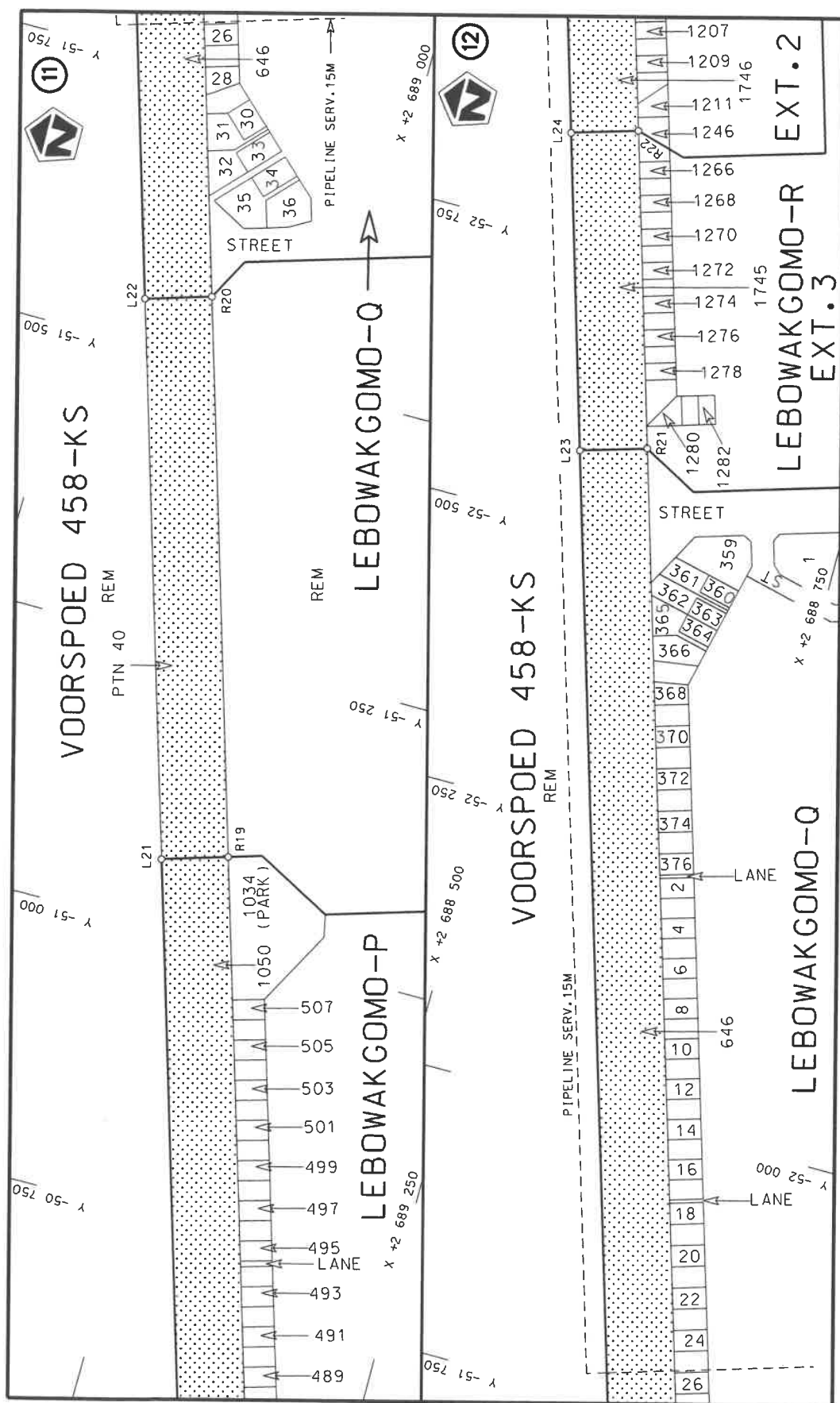
Die Suid Afrikaanse Nasionale Padagentskap MSB Bpk
The South African National Roads Agency SOC Ltd

Die figuur getoon
The figure shown

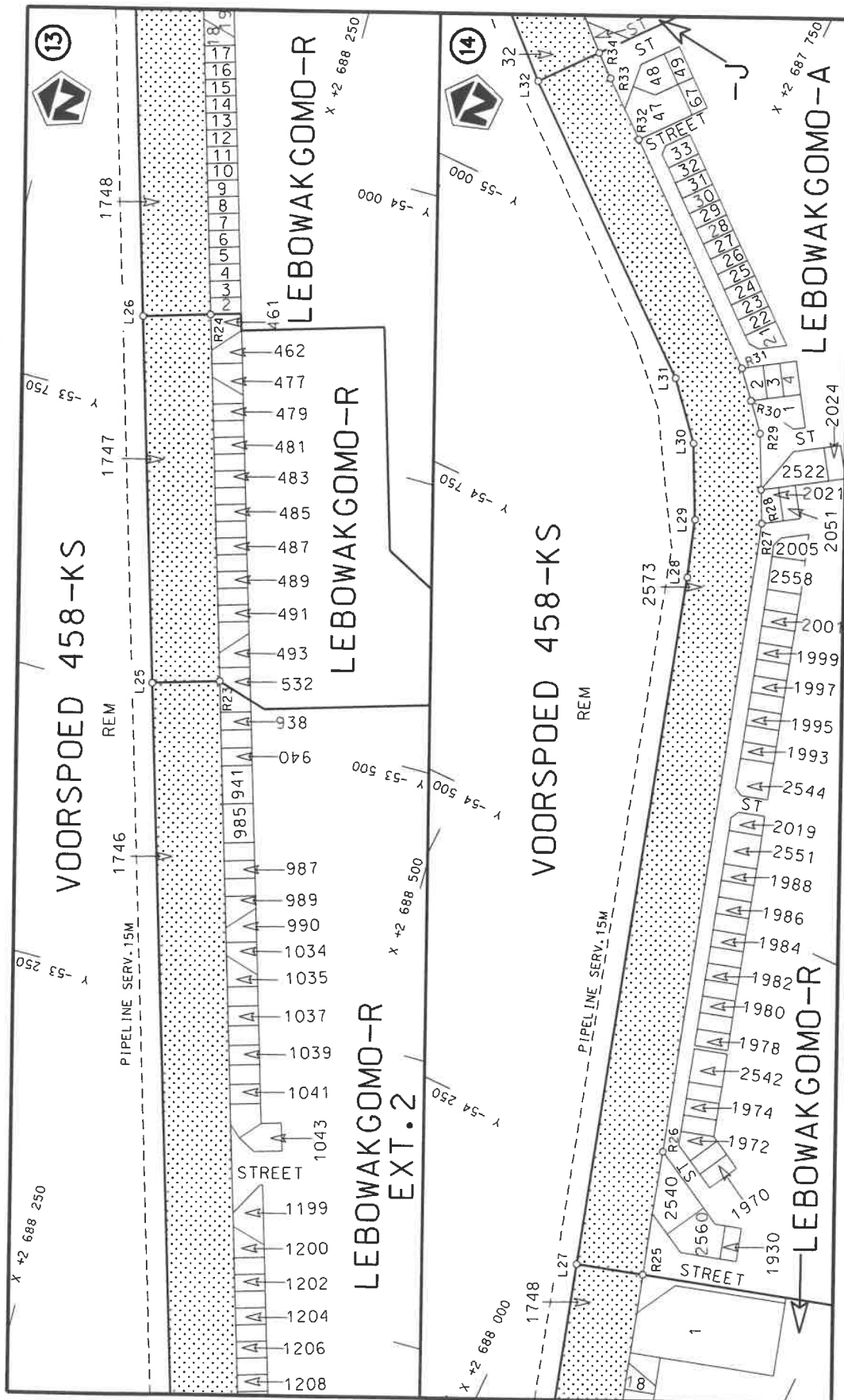


steldie padreserwe voor van 'n gedeelte
represents the road reserve of a portion
van Nasionale Roete R518 Seksie
of National Route of Section

Vel Sheet 5 of 11
Plan P992/17



Die Suid Afrikaanse Nasionale Padagentskop MSB Bpk The South African National Roads Agency SOC Ltd	Die figuur getoon The figure shown	steldie padreserwe voor van 'n gedeelte represents the road reserve of a portion van Nasionale Roete R518 of National Route	Vel Sheet 6 of 11
		Seksie R518 Section	Plan P992/17



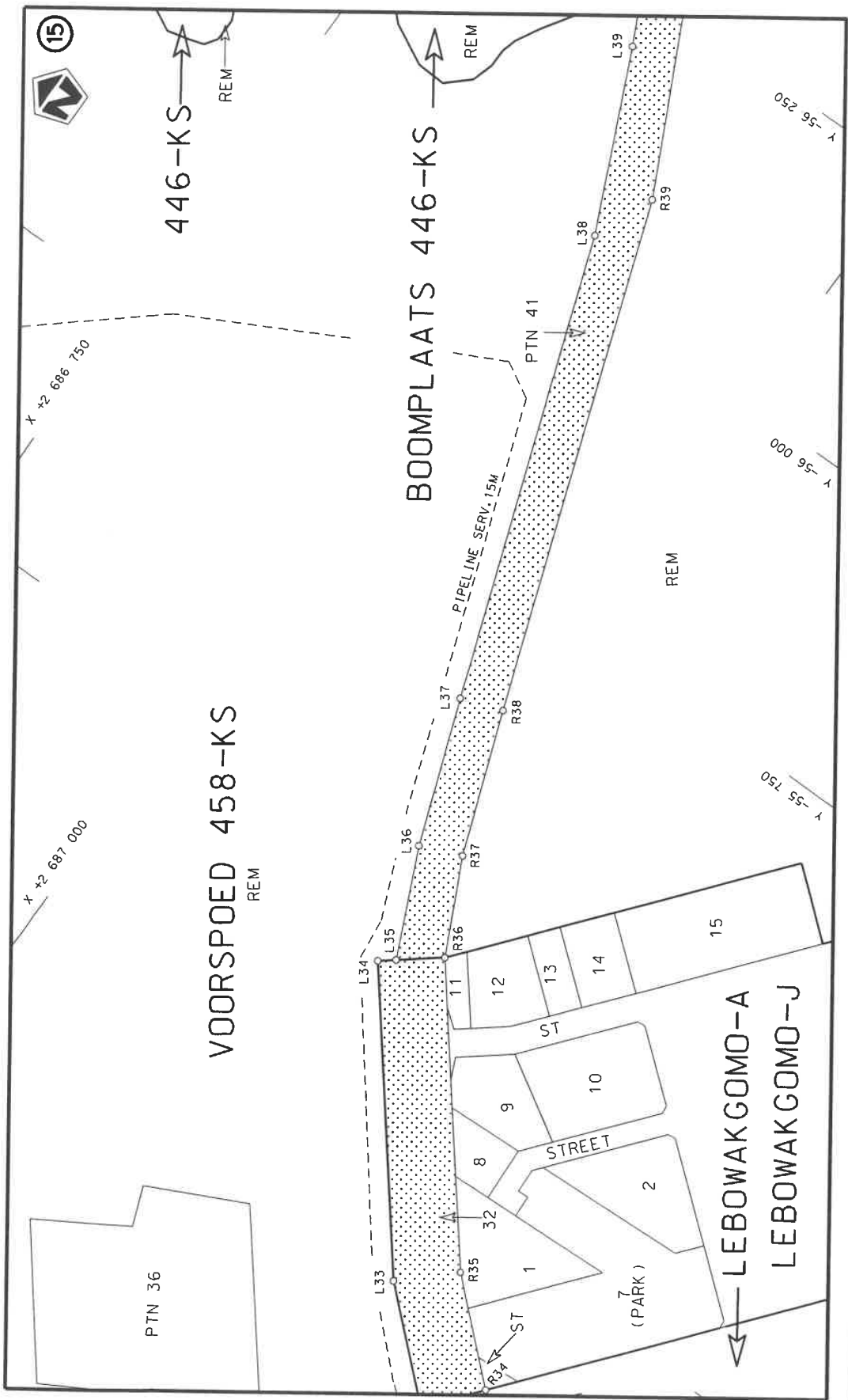
Die Suid Afrikaanse Nasionale Padagentskap MSB Bpk
The South African National Roads Agency SOC Ltd

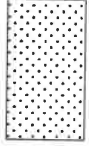
Die figuur getoon
The figure shown

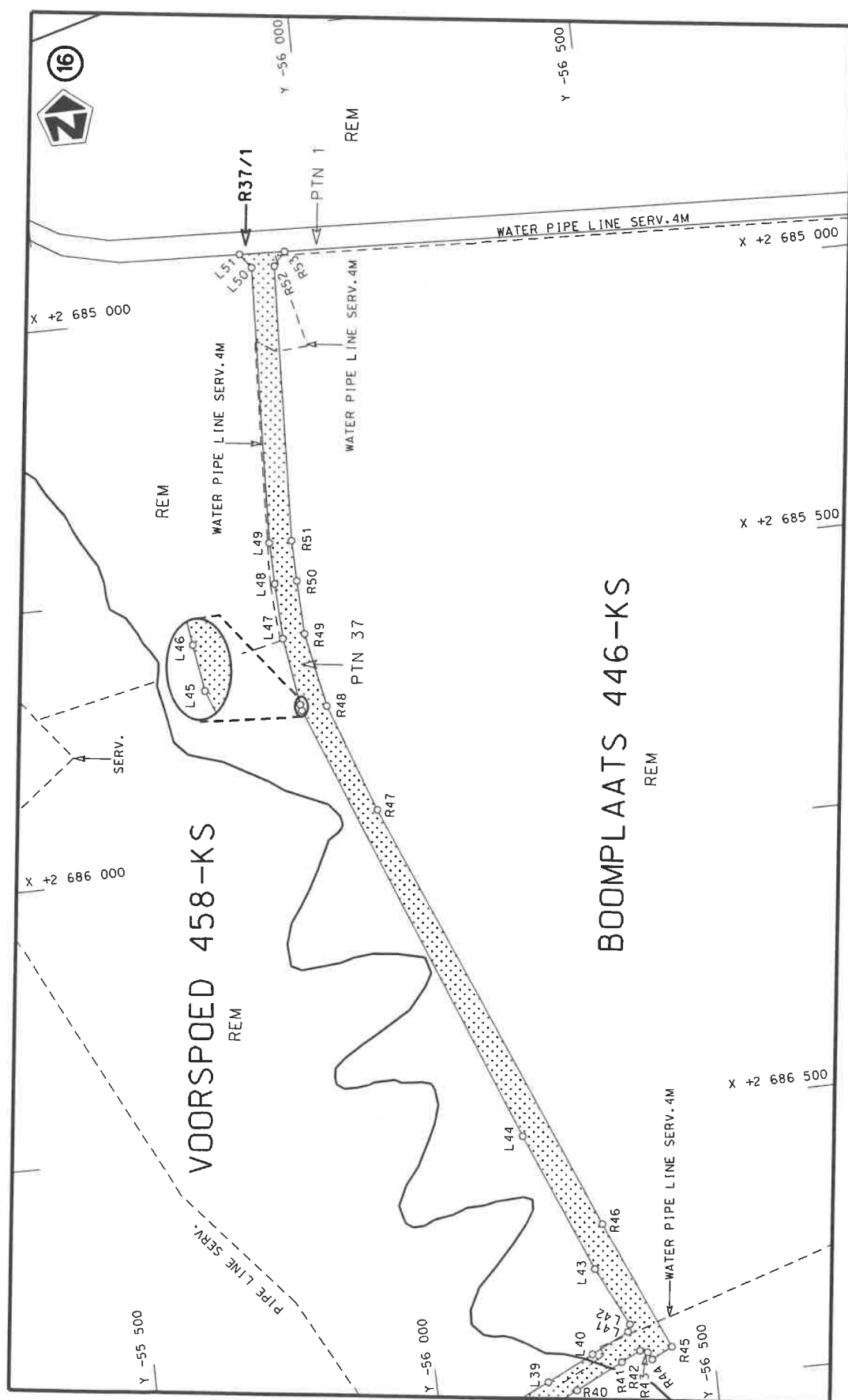



stel die padreserwe voor van 'n gedeelte
represents the road reserve of a portion
van Nasionale Roete R518
of National Route R518

Vel 7 of 11
Sheet 7 of 11
Plan P992/17



Die Suid Afrikaanse Nasionale Padagentskap MSB Bpk The South African National Roads Agency SOC Ltd	Die figuur getoon The figure shown		steldie padreserwe voor van 'n gedeelte represents the road reserve of a portion van Nasionale Roete R518 of National Route	4 Seksie Section	Vel Sheet 8 of 11	Plan P992/17



Die Suid Afrikaanse Nasionale Padagentskap MSB Bpk	Die figuur getoon		steldie padreserwe voor van 'n gedeelte	Vel	9	11
The South African National Roads Agency SOC Ltd	The figure shown		represents the road reserve of a portion	Sheet	of	
			van Nasionale Roete R518	Plan	4	P992/17
			of National Route	Section		

PADRESERWE KOÖRDINATE / ROAD RESERVE CO-ORDINATES									
LINKERKANT/LEFT HAND SIDE					REGTERKANT/RIGHT HAND SIDE				
	Y	X	WG 29°		Y	X			
L1	-33 949.28	2 690 947.23		R1	-33 955.02	2 691 031.10			
L2	-33 995.92	2 690 971.05		R2	-36 720.24	2 690 839.33			
L3	-36 150.98	2 690 819.69		R3	-39 518.13	2 690 645.06			
L4	-36 678.10	2 690 779.13		R4	-40 516.59	2 690 575.61			
L5	-39 501.16	2 690 587.41		R5	-41 781.24	2 690 488.39			
L6	-40 636.18	2 690 509.18		R6	-41 888.82	2 690 486.99			
L7	-41 853.53	2 690 424.48		R7	-43 633.73	2 690 588.18			
L8	-41 888.48	2 690 426.57		R8	-45 308.54	2 690 685.39			
L9	-42 189.45	2 690 445.22		R9	-45 445.40	2 690 675.41			
L10	-43 613.87	2 690 527.65		R10	-45 550.38	2 690 654.95			
L11	-45 071.71	2 690 612.41		R11	-45 686.70	2 690 615.37			
L12	-45 316.26	2 690 623.61		R12	-46 628.10	2 690 336.85			
L13	-45 465.53	2 690 611.29		R13	-47 217.63	2 690 160.92			
L14	-45 610.97	2 690 576.74		R14	-48 297.37	2 689 838.79			
L15	-45 659.72	2 690 562.11		R15	-48 482.30	2 689 783.64			
L16	-46 610.94	2 690 279.36		R16	-48 688.34	2 689 722.20			
L17	-47 200.42	2 690 103.45		R17	-48 975.84	2 689 636.47			
L18	-48 198.76	2 689 805.61		R18	-49 428.16	2 689 501.58			
L19	-48 337.71	2 689 764.15		R19	-51 077.90	2 689 009.65			
L20	-49 411.01	2 689 444.10		R20	-51 558.01	2 688 866.53			
L21	-51 060.74	2 688 952.12		R21	-52 583.79	2 688 560.64			
L22	-51 540.87	2 688 809.03		R22	-52 855.78	2 688 479.77			
L23	-52 566.65	2 688 503.14		R23	-53 530.40	2 688 278.48			
L24	-52 838.62	2 688 422.27		R24	-53 844.72	2 688 184.70			
L25	-53 513.24	2 688 220.98		R25	-54 174.36	2 688 086.34			
L26	-53 827.57	2 688 127.20		R26	-54 281.42	2 688 054.39			
L27	-54 157.20	2 688 028.84		R27	-54 826.68	2 687 889.97			
L28	-54 754.33	2 687 850.68		R28	-54 853.71	2 687 876.46			
L29	-54 803.76	2 687 834.57		R29	-54 898.57	2 687 853.64			
L30	-54 864.67	2 687 803.57		R30	-54 921.32	2 687 833.68			
L31	-54 910.14	2 687 763.75		R31	-54 944.11	2 687 813.75			
L32	-55 095.91	2 687 537.85		R32	-55 088.16	2 687 641.56			
L33	-55 174.13	2 687 452.03		R33	-55 126.25	2 687 595.20			
L34	-55 399.89	2 687 273.01		R34	-55 142.32	2 687 576.04			
L35	-55 410.02	2 687 285.75		R35	-55 215.26	2 687 496.24			
L36	-55 505.25	2 687 242.54		R36	-55 437.21	2 687 319.96			
L37	-55 634.39	2 687 195.25		R37	-55 520.59	2 687 279.42			
L38	-56 041.76	2 687 050.87		R38	-55 647.70	2 687 232.94			
L39	-56 198.70	2 686 979.10		R39	-56 097.54	2 687 073.58			
L40	-56 282.72	2 686 937.35		R40	-56 248.05	2 686 999.13			
L41	-56 350.48	2 686 903.85		R41	-56 333.31	2 686 956.96			
L42	-56 355.07	2 686 890.30		R42	-56 368.10	2 686 939.74			
L43	-56 303.69	2 686 784.83		R43	-56 381.44	2 686 944.33			
L44	-56 201.13	2 686 533.10		R44	-56 006.75	2 685 920.54			
L45	-55 891.53	2 685 728.41		R45	-56 388.02	2 686 957.82			
L46	-55 889.88	2 685 717.26		R46	-56 425.87	2 686 939.10			
L47	-55 872.43	2 685 602.69		R47	-56 325.70	2 686 705.51			
L48	-55 867.66	2 685 496.26		R48	-56 006.75	2 685 920.54			
L49	-55 865.94	2 685 421.90		R49	-55 936.65	2 685 724.83			
L50	-55 887.85	2 684 926.52		R50	-55 911.26	2 685 591.47			
L51	-55 868.96	2 684 900.72		R51	-55 907.72	2 685 495.04			
					Vel Sheet	10	Van of	11	P992/17

This gazette is also available free online at www.gpwonline.co.za