
GOVERNMENT NOTICES • GOEWERMENTSKENNISGEWINGS

DEPARTMENT OF TRANSPORT

NO. 6425

11 July 2025

**THE SOUTH AFRICAN NATIONAL ROADS
AGENCY SOC LIMITED**Registration No: 1998/009584/30

DECLARATION AMENDMENT OF NATIONAL ROAD R512 SECTION 2

AMENDMENT OF DECLARATION No. 784 OF 2012.

By virtue of section 40(1)(b) of the South African National Roads Agency Limited and the National Roads Act 1998 (Act No. 7 of 1998), I hereby amend Declaration No. 784 of 2012 by substituting paragraph P of the Schedule, being the descriptive declaration of the route from the North West / Gauteng Provincial Border up to its intersection with Provincial Road R104 at Broederstroom, with the accompanying sheets 1 to 4 of Plan No. P1214/20.

(National Road R512 Section 2: North West / Gauteng Provincial Border – Broederstroom)
MINISTER OF TRANSPORT

DEPARTEMENT VAN VERVOER

NO. 6425

11 Julie 2025

**DIE SUID-AFRIKAANSE NASIONALE
PADAGENTSKAP MSB BEPERK**

Registrasie No: 1998/009584/30

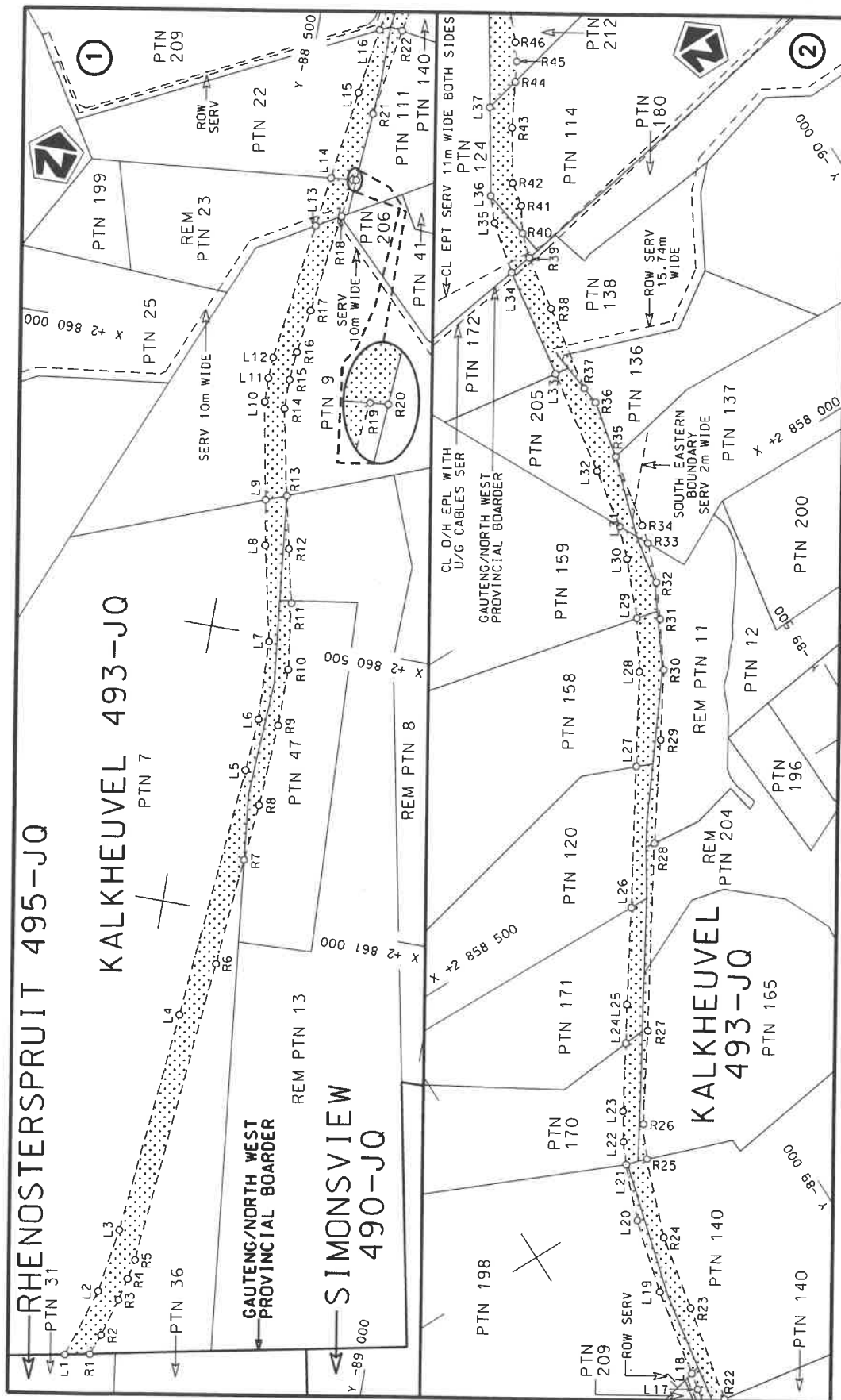
VERKLARING WYSIGING VAN NASIONALE PAD R512 SEKSIE 2


WYSIGING VAN VERKLARING No. 784 VAN 2012.

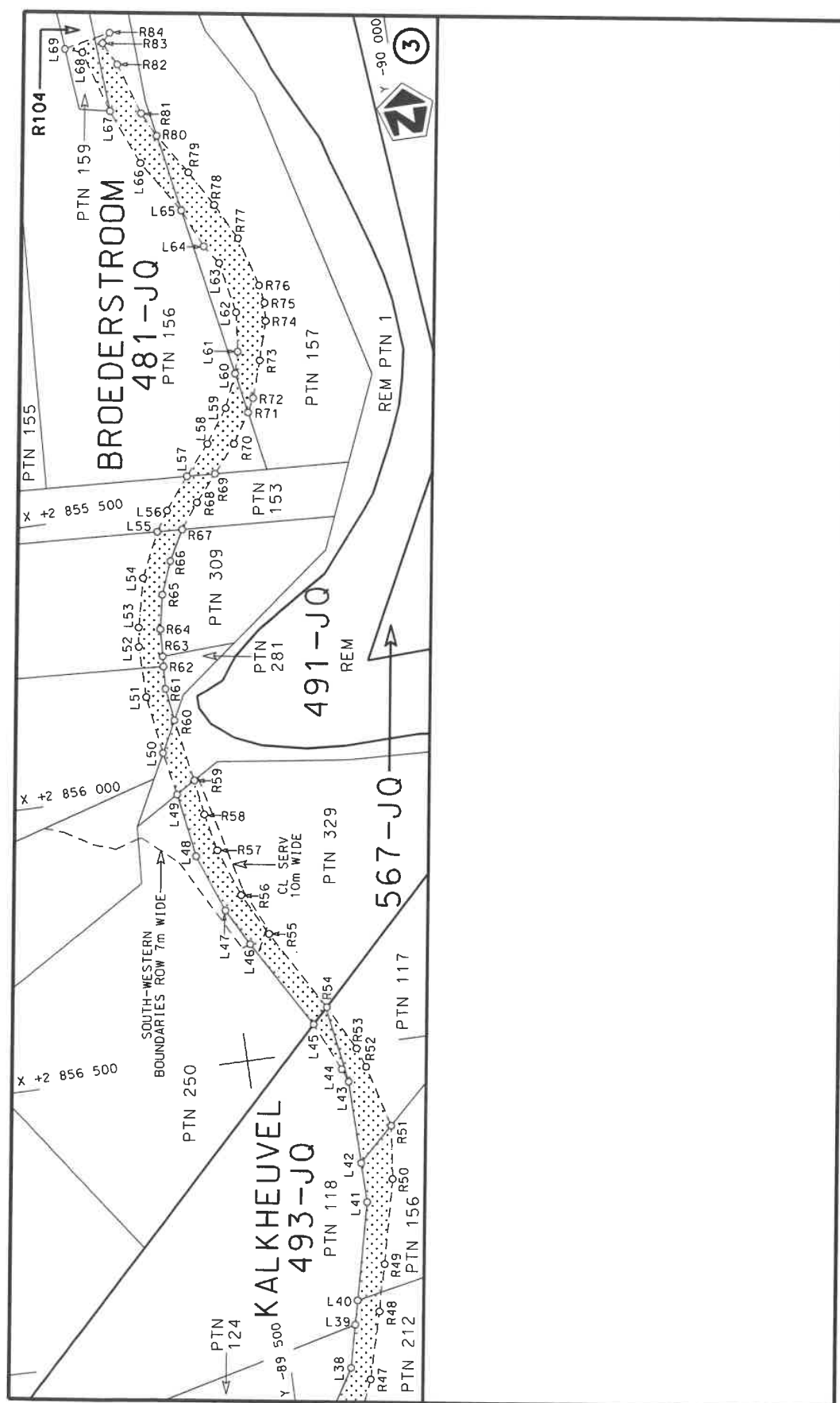
Kragtens Artikel 40(1)(b) van die Suid-Afrikaanse Nasionale Padagentskap Beperk en Nasionale Paaie Wet 1998 (Wet No. 7 van 1998), wysig ek hiermee Verklaring No. 784 van 2012 deur paragraaf P van die Skedule te vervang, synde die gedeelte van die beskrywende verklaring van die pad vanaf die Noordwes / Gauteng Provinsiale Grens tot by die interseksie met Provinsiale Pad R104 by Broederstroom, met bygaande velle 1 tot 4 van Plan No. P1214/20.


(National Road R512 Section 2: Noordwes / Gauteng Provinsiale Grens – Broederstroom)


MINISTER VAN VERVOER



Die Suid Afrikaanse Nasionale Padagentskap MSB Bpk The South African National Roads Agency SOC Ltd	Die figuur getoon The figure shown		steldie padreserwe voor van 'n gedeelte represents the road reserve of a portion van Nasionale Roete R512 of National Route	2	Vel Sheet 1 of 4
				Plan	P1214/20



Die Suid Afrikaanse Nasionale Padagentskap MSB Bpk	Die figuur getoon		steldie padreserwe voor van 'n gedeelte represents the road reserve of a portion	Vel Sheet	2 of	4
The South African National Roads Agency SOC Ltd	The figure shown		van Nasionale Roete R512 of National Route	2	Plan	P1214/20

PADRESERVE KOÖRDINATE / ROAD RESERVE CO-ORDINATES					
LINKERKANT/LEFT HAND SIDE			REGTERKANT/RIGHT HAND SIDE		
	Y	X	WG 27°	Y	X
L1	-88,468.51	2,861,832.25	R1	-88,512.69	2,861,823.44
L2	-88,507.74	2,861,708.22	R2	-88,526.65	2,861,784.60
L3	-88,526.25	2,861,593.75	R3	-88,546.66	2,861,717.48
L4	-88,564.98	2,861,195.51	R4	-88,556.21	2,861,677.39
L5	-88,604.52	2,860,743.85	R5	-88,563.04	2,861,642.10
L6	-88,611.63	2,860,650.35	R6	-88,613.46	2,861,094.45
L7	-88,605.66	2,860,509.65	R7	-88,629.57	2,860,903.39
L8	-88,569.38	2,860,341.34	R8	-88,639.26	2,860,801.40
L9	-88,555.50	2,860,261.82	R9	-88,647.73	2,860,654.86
L10	-88,523.87	2,860,088.75	R10	-88,648.16	2,860,553.55
L11	-88,522.81	2,860,046.09	R11	-88,633.02	2,860,436.29
L12	-88,524.61	2,860,008.32	R12	-88,611.84	2,860,340.30
L13	-88,557.93	2,859,763.91	R13	-88,591.36	2,860,248.16
L14	-88,569.93	2,859,675.19	R14	-88,560.46	2,860,094.49
L15	-88,591.78	2,859,516.57	R15	-88,560.48	2,860,042.38
L16	-88,608.71	2,859,399.80	R16	-88,564.60	2,859,991.46
L17	-88,616.87	2,859,353.90	R17	-88,576.02	2,859,914.33
L18	-88,623.07	2,859,324.21	R18	-88,599.97	2,859,739.28
L19	-88,653.37	2,859,168.73	R19	-88,608.34	2,859,671.53
L20	-88,686.20	2,859,040.04	R20	-88,614.57	2,859,670.94
L21	-88,722.60	2,858,944.59	R21	-88,623.43	2,859,549.28
L22	-88,741.40	2,858,906.55	R22	-88,648.45	2,859,394.22
L23	-88,769.99	2,858,859.65	R23	-88,684.94	2,859,222.66
L24	-88,837.40	2,858,759.95	R24	-88,711.16	2,859,089.86
L25	-88,877.12	2,858,701.26	R25	-88,759.09	2,858,955.70
L26	-88,975.02	2,858,558.76	R26	-88,787.07	2,858,899.24
L27	-89,116.28	2,858,349.22	R27	-88,883.59	2,858,760.76
L28	-89,211.80	2,858,208.06	R28	-89,070.88	2,858,482.81
L29	-89,258.00	2,858,124.77	R29	-89,179.36	2,858,331.33
L30	-89,300.23	2,858,025.32	R30	-89,249.50	2,858,228.74
L31	-89,319.20	2,857,969.60	R31	-89,292.09	2,858,147.94
L32	-89,338.58	2,857,864.01	R32	-89,321.38	2,858,088.53
L33	-89,367.38	2,857,677.68	R33	-89,345.64	2,858,021.25
L34	-89,397.03	2,857,482.74	R34	-89,355.10	2,857,989.04
L35	-89,418.68	2,857,391.39	R35	-89,379.44	2,857,859.77
L36	-89,437.72	2,857,346.72	R36	-89,400.48	2,857,758.51
L37	-89,520.40	2,857,211.44	R37	-89,396.89	2,857,726.64
L38	-89,606.47	2,857,070.79	R38	-89,423.29	2,857,574.72
L39	-89,624.65	2,856,995.28	R39	-89,437.61	2,857,476.92
L40	-89,634.92	2,856,952.68	R40	-89,450.69	2,857,433.61
L41	-89,676.17	2,856,780.69	R41	-89,475.35	2,857,390.51
L42	-89,675.32	2,856,709.94	R42	-89,483.68	2,857,348.16
L43	-89,673.53	2,856,562.72	R43	-89,535.07	2,857,263.80
L44	-89,664.70	2,856,538.65	R44	-89,582.78	2,857,197.14
L45	-89,626.28	2,856,452.35	R45	-89,604.34	2,857,167.74
L46	-89,534.27	2,856,294.52	R46	-89,620.94	2,857,137.60
L47	-89,499.25	2,856,228.79	R47	-89,637.76	2,857,095.28
L48	-89,460.90	2,856,125.20	R48	-89,670.07	2,856,976.95
L49	-89,442.96	2,856,011.26	R49	-89,691.11	2,856,894.27
L50	-89,428.00	2,855,934.22	R50	-89,726.14	2,856,745.07
L51	-89,412.87	2,855,830.64	R51	-89,737.60	2,856,651.09
			Vel Sheet	3	Van of 4
			P1214/20		

PADRESERWE KOÖRDINATE / ROAD RESERVE CO-ORDINATES					
LINKERKANT/LEFT HAND SIDE			REGTERKANT/RIGHT HAND SIDE		
	Y	X	WG 27°	Y	X
L52	-89,412.39	2,855,739.98	R52	-89,707.54	2,856,539.66
L53	-89,416.84	2,855,705.62	R53	-89,695.43	2,856,504.73
L54	-89,436.85	2,855,619.54	R54	-89,653.84	2,856,425.11
L55	-89,472.81	2,855,541.05	R55	-89,570.09	2,856,280.21
L56	-89,495.47	2,855,505.77	R56	-89,530.60	2,856,204.88
L57	-89,539.17	2,855,450.11	R57	-89,500.09	2,856,119.63
L58	-89,583.58	2,855,397.60	R58	-89,486.09	2,856,052.84
L59	-89,624.35	2,855,338.95	R59	-89,476.88	2,855,990.63
L60	-89,649.48	2,855,280.34	R60	-89,456.47	2,855,879.03
L61	-89,659.45	2,855,242.25	R61	-89,448.05	2,855,821.25
L62	-89,666.08	2,855,172.14	R62	-89,450.06	2,855,781.06
L63	-89,648.45	2,855,080.88	R63	-89,451.41	2,855,762.90
L64	-89,625.77	2,855,047.78	R64	-89,454.01	2,855,714.27
L65	-89,594.77	2,854,978.76	R65	-89,466.12	2,855,653.68
L66	-89,534.62	2,854,884.76	R66	-89,488.63	2,855,596.12
L67	-89,494.15	2,854,785.87	R67	-89,517.52	2,855,543.30
L68	-89,460.12	2,854,675.40	R68	-89,550.50	2,855,498.85
L69	-89,429.72	2,854,664.96	R69	-89,589.36	2,855,452.65
			R70	-89,629.98	2,855,404.23
			R71	-89,662.66	2,855,352.11
			R72	-89,674.96	2,855,328.06
			R73	-89,696.05	2,855,262.82
			R74	-89,716.08	2,855,194.79
			R75	-89,718.57	2,855,162.41
			R76	-89,713.23	2,855,130.00
			R77	-89,687.62	2,855,041.66
			R78	-89,654.15	2,854,977.14
			R79	-89,616.77	2,854,913.02
			R80	-89,569.63	2,854,840.46
			R81	-89,547.88	2,854,797.27
			R82	-89,518.37	2,854,705.01
			R83	-89,497.56	2,854,664.10
			R84	-89,512.34	2,854,647.18

Vel Sheet	4	Van of	4	P1214/20
--------------	---	-----------	---	----------