
GOVERNMENT NOTICES • GOEWERMENTSKENNISGEWINGS

DEPARTMENT OF TRANSPORT

NO. 6424

11 July 2025

**THE SOUTH AFRICAN NATIONAL ROADS
AGENCY SOC LIMITED**Registration No: 1998/009584/30

DECLARATION AMENDMENT OF NATIONAL ROAD R555 SECTION 1

AMENDMENT OF DECLARATION No. 251 OF 2018.

By virtue of section 40(1)(b) of the South African National Roads Agency Limited and the National Roads Act 1998 (Act No. 7 of 1998), I hereby amend Declaration No. 251 of 2018 by substituting sheets 2 and 10 with the accompanying sheets 2A and 10A of Plan No. P970/17.

(National Road R555 Section 1: eMalahleni – Middelburg)
MINISTER OF TRANSPORT

DEPARTEMENT VAN VERVOER

NO. 6424

11 Julie 2025

**DIE SUID-AFRIKAANSE NASIONALE
PADAGENTSKAP MSB BEPERK**

Registrasie No: 1998/009584/30

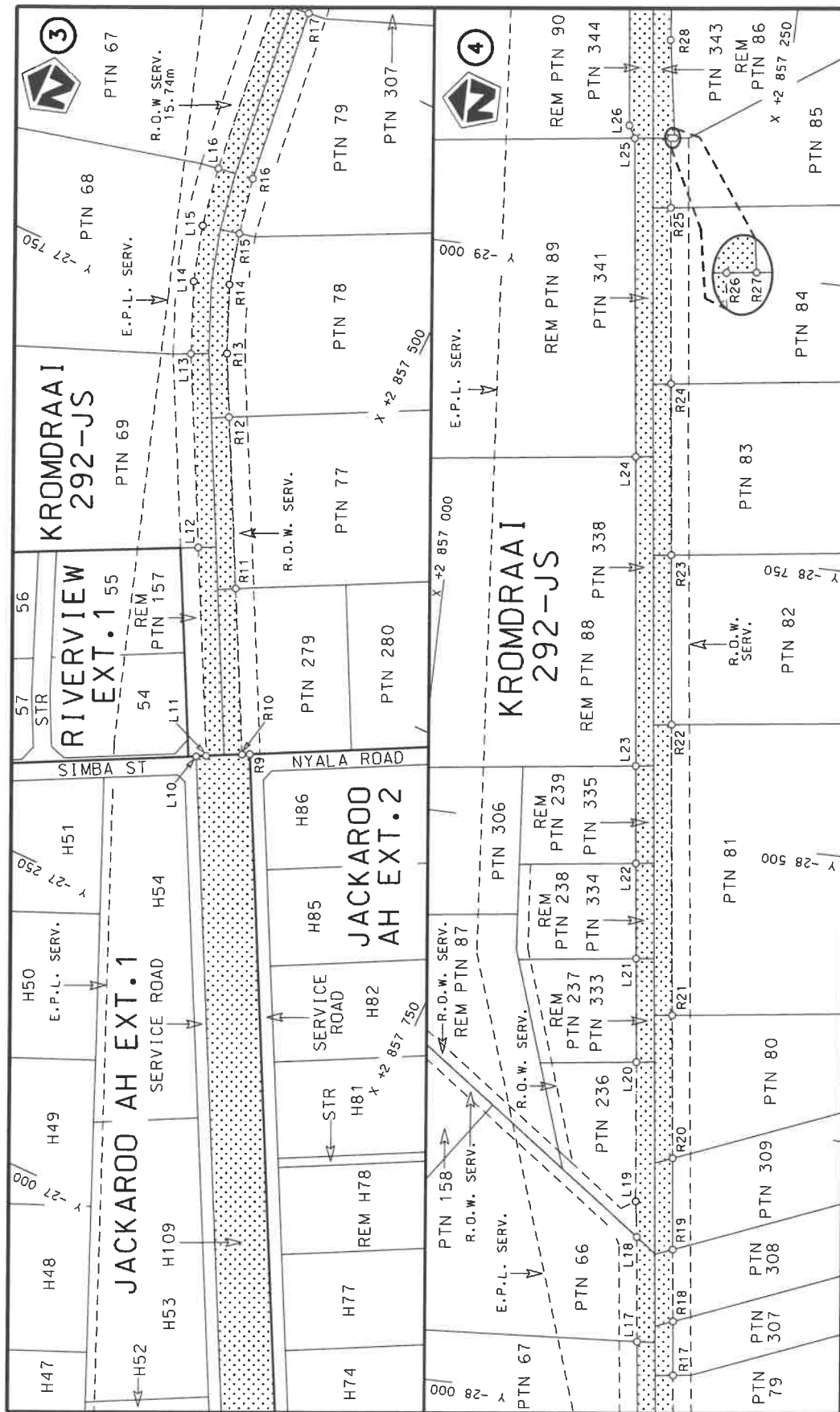
VERKLARING WYSIGING VAN NASIONALE PAD R555 SEKSIE 1


WYSIGING VAN VERKLARING No. 251 VAN 2018.

Kragtens Artikel 40(1)(b) van die Suid-Afrikaanse Nasionale Padagentskap Beperk en Nasionale Paaie Wet 1998 (Wet No. 7 van 1998), wysig ek hiermee Verklaring No. 251 van 2018 deur velle 2 en 10 te vervang met bygaande velle 2A en 10A van Plan No. P970/17.

(Nasionale Pad R555 Seksie 1: eMalahleni – Middelburg)


MINISTER VAN VERVOER



Die Suid Afrikaanse Nasionale Padagentskap MSB Bpk The South African National Roads Agency SOC Ltd	Die figuur getoon The figure shown		stel die padreserwe voor van 'n gedeelte represents the road reserve of a portion van Nasionale Roete R555 of National Route	1	Vel van Sheet 2A of 12 Plan P970/17
---	---------------------------------------	---	---	---	---

PADRESERWE KOÖRDINATE / ROAD RESERVE CO-ORDINATES						
LINKERKANT/LEFT HAND SIDE				REGTERKANT/RIGHT HAND SIDE		
	Y	X	WG 29°		Y	X
L1	-24 841.67	2 858 896.20		R1	-24 877.89	2 858 905.62
L2	-24 924.44	2 858 819.40		R2	-25 049.45	2 858 747.65
L3	-24 985.80	2 858 762.19		R3	-25 137.43	2 858 692.45
L4	-25 045.78	2 858 709.42		R4	-25 231.19	2 858 642.80
L5	-25 160.61	2 858 643.80		R5	-25 484.24	2 858 512.12
L6	-25 461.77	2 858 487.82		R6	-25 748.48	2 858 376.63
L7	-25 718.26	2 858 355.95		R7	-25 775.02	2 858 371.26
L8	-25 738.10	2 858 337.24		R8	-26 254.98	2 858 121.06
L9	-26 233.15	2 858 079.17		R9	-27 416.20	2 857 515.70
L10	-27 394.53	2 857 473.74		R10	-27 413.01	2 857 509.53
L11	-27 398.70	2 857 481.81		R11	-27 542.90	2 857 441.81
L12	-27 561.83	2 857 396.59		R12	-27 677.09	2 857 371.84
L13	-27 713.38	2 857 317.41		R13	-27 726.90	2 857 345.86
L14	-27 772.03	2 857 292.13		R14	-27 782.74	2 857 321.80
L15	-27 819.70	2 857 278.13		R15	-27 826.89	2 857 308.85
L16	-27 871.16	2 857 269.09		R16	-27 875.76	2 857 300.25
L17	-28 054.13	2 857 247.14		R17	-28 028.13	2 857 281.97
L18	-28 145.86	2 857 236.14		R18	-28 075.38	2 857 276.30
L19	-28 177.35	2 857 231.60		R19	-28 138.48	2 857 268.73
L20	-28 299.26	2 857 217.74		R20	-28 218.51	2 857 259.13
L21	-28 390.11	2 857 206.84		R21	-28 343.87	2 857 244.09
L22	-28 473.51	2 857 196.84		R22	-28 598.65	2 857 213.52
L23	-28 558.89	2 857 186.59		R23	-28 747.14	2 857 195.71
L24	-28 829.81	2 857 154.60		R24	-28 897.19	2 857 177.71
L25	-29 108.52	2 857 120.66		R25	-29 051.31	2 857 159.22
L26	-29 119.25	2 857 114.55		R26	-29 112.27	2 857 151.90
L27	-29 415.17	2 857 079.20		R27	-29 112.67	2 857 155.26
L28	-29 488.99	2 857 071.32		R28	-29 198.05	2 857 141.48
L29	-29 825.25	2 857 034.83		R29	-29 309.98	2 857 130.09
L30	-31 274.33	2 856 860.89		R30	-29 424.90	2 857 115.00
L31	-31 282.22	2 856 856.71		R31	-29 458.62	2 857 110.84
L32	-31 605.87	2 856 819.26		R32	-29 533.49	2 857 101.60
L33	-31 694.36	2 856 810.36		R33	-29 613.67	2 857 091.98
L34	-31 790.13	2 856 802.81		R34	-29 828.99	2 857 065.96
L35	-31 878.96	2 856 798.91		R35	-31 270.03	2 856 893.05
L36	-31 979.70	2 856 794.43		R36	-31 595.36	2 856 854.02
L37	-32 210.71	2 856 783.61		R37	-31 705.51	2 856 840.80
L38	-32 731.19	2 856 759.98		R38	-31 781.29	2 856 834.71
L39	-33 090.35	2 856 743.26		R39	-31 869.29	2 856 830.87
L40	-33 203.60	2 856 733.92		R40	-31 970.00	2 856 826.46
L41	-33 613.82	2 856 695.58		R41	-32 207.20	2 856 817.75
L42	-33 740.86	2 856 683.72		R42	-32 729.41	2 856 795.01
L43	-33 780.02	2 856 679.68		R43	-32 887.39	2 856 787.63
L44	-33 779.53	2 856 675.41		R44	-33 093.68	2 856 776.90
L45	-33 781.59	2 856 675.24		R45	-33 193.52	2 856 769.01
L46	-34 150.23	2 856 647.30		R46	-33 563.41	2 856 733.96
L47	-34 253.23	2 856 638.35		R47	-33 752.17	2 856 716.08
L48	-34 329.50	2 856 631.72		R48	-33 786.37	2 856 712.83
L49	-35 044.69	2 856 560.44		R49	-34 189.30	2 856 681.03
L50	-35 088.76	2 856 549.13		R50	-34 294.35	2 856 671.75
L51	-35 103.92	2 856 545.24		R51	-34 319.43	2 856 669.51
				Vel Sheet	10A Van of 12	P970/17