

---

**GOVERNMENT NOTICES • GOEWERMENTSKENNISGEWINGS**

---

**DEPARTMENT OF TRANSPORT**

NO. 6421

11 July 2025

**THE SOUTH AFRICAN NATIONAL ROADS  
AGENCY SOC LIMITED**Registration No: 1998/009584/30

---

**DECLARATION AMENDMENT OF NATIONAL ROAD R71 SECTION 2**

AMENDMENT OF DECLARATION NO'S. 1229 OF 2004 AND 778 OF 2007.

By virtue of section 40(1)(b) of The South African National Roads Agency Limited and National Roads Act, 1998 (Act No. 7 of 1998), I hereby amend **(I)** Declaration No. 1229 of 2004 by substituting a part of paragraph V of the Schedule, being the descriptive declaration of the route through the town of Tzaneen and **(II)** Declaration No. 778 of 2007 in its entirety, by substituting all sheets of their respective Plans with the accompanying sheets 1 to 22 of Plan No. P1176/19.

**(National Road R71 Section 2: Tzaneen – Gravelotte)**  
**MINISTER OF TRANSPORT**

## DEPARTEMENT VAN VERVOER

NO. 6421

11 Julie 2025

**DIE SUID-AFRIKAANSE NASIONALE  
PADAGENTSKAP MSB BEPERK**

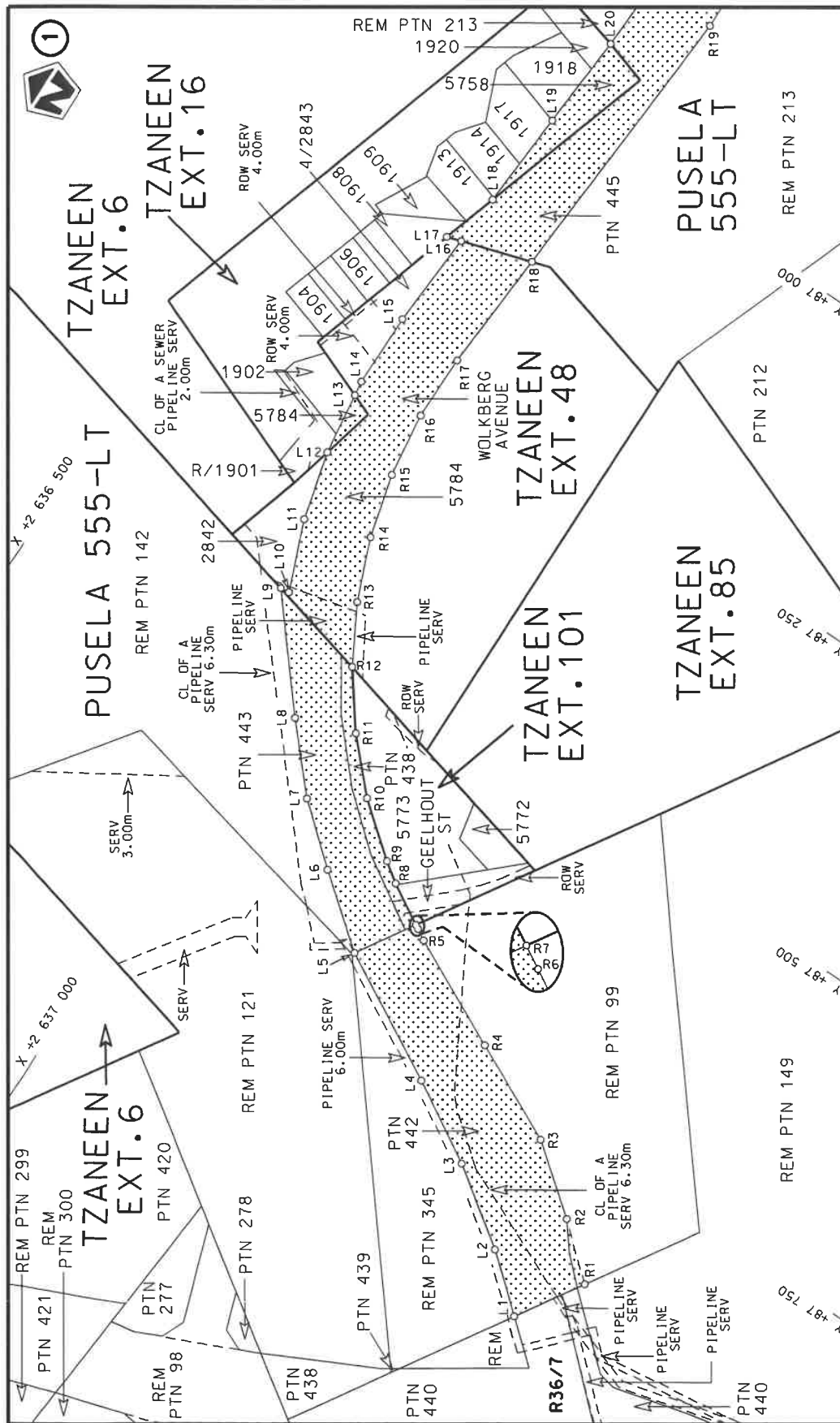
Registrasie No: 1998/009584/30

**VERKLARING WYSIGING VAN NASIONALE PAD R71 SEKSIE 2**

WYSIGING VAN VERKLARING NO'S. 1229 VAN 2004 EN 778 VAN 2007.

Kragtens Artikel 40(1)(b) van die Wet op die Suid-Afrikaanse Nasionale Padagentskap Beperk en op Nasionale Paaie, 1998 (Wet No.7 van 1998), wysig ek hiermee **(I)** Verklaring No. 1229 van 2004, deur 'n gedeelte van paragraaf V van die Skedule te vervang, synde die gedeelte van die beskrywende verklaring van die pad deur die dorp van Tzaneen en **(II)** Verklaring No. 778 van 2007 in sy geheel, deur alle velle van hulle respektiewelike Planne te vervang met meegaande velle 1 tot 22 van Plan No. P1176/19.

**(Nasionale Pad R71 Seksie 2: Tzaneen – Gravelotte)**  
**MINISTER VAN VERVOER**



Vel  
Sheet 1  
of 22

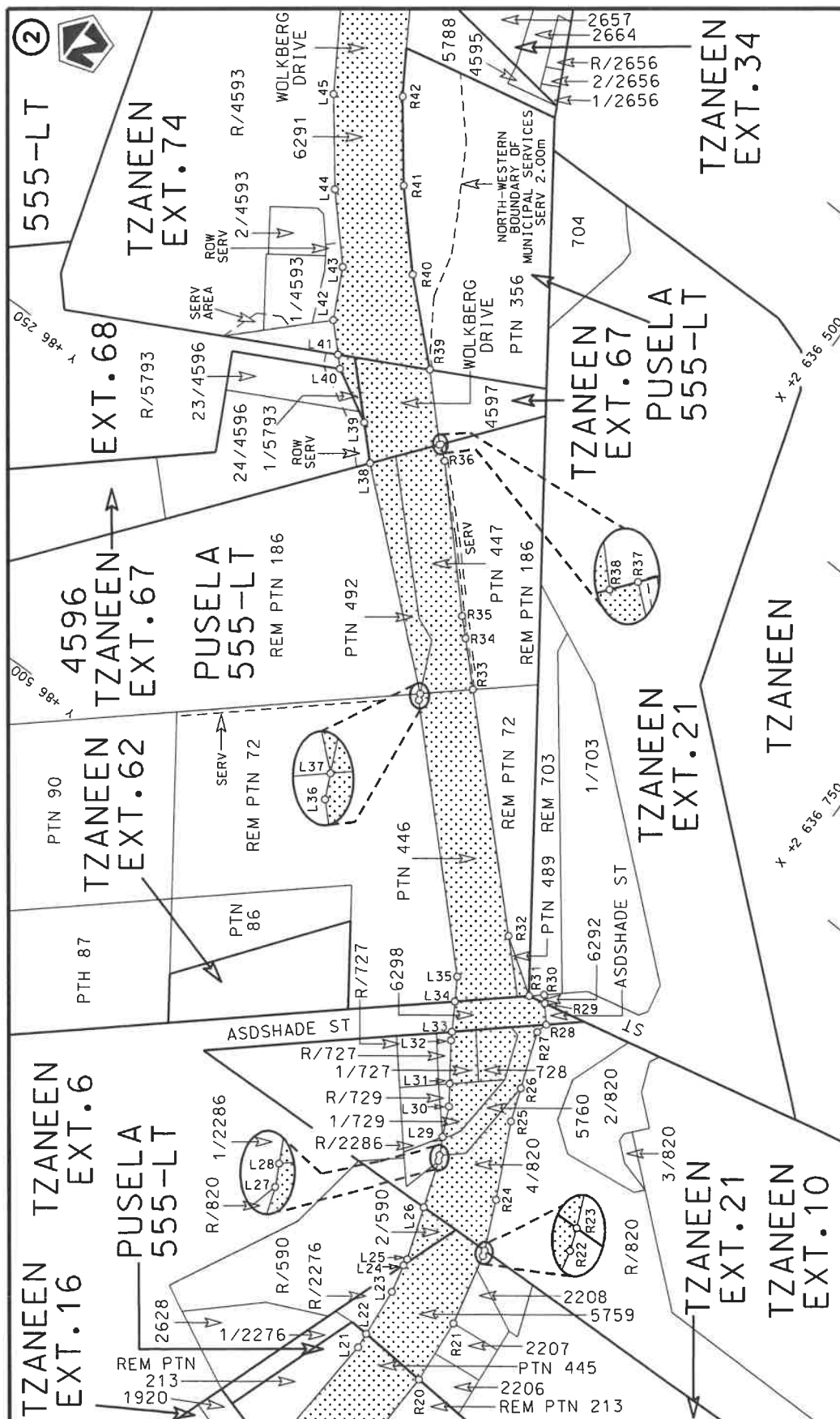
Plan  
P1176/19

stelt die padreserwe voor van 'n gedeelte  
represents the road reserve of a portion  
van Nasionale Roete R71  
of National Route

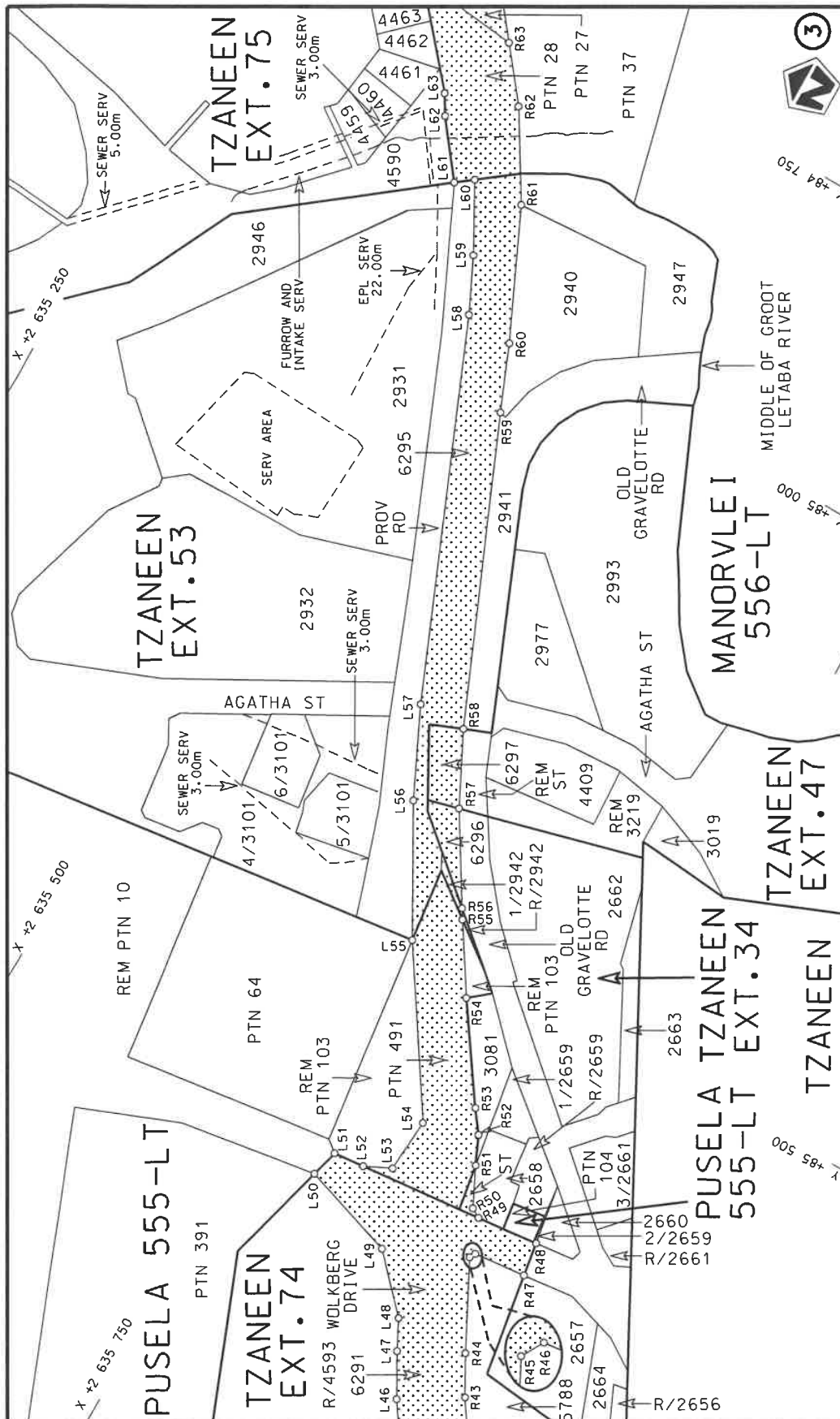


Die figuur getoon  
The figure shown

Die Suid Afrikaanse Nasionale Padagentskap MSB Bpk  
The South African National Roads Agency SOC Ltd

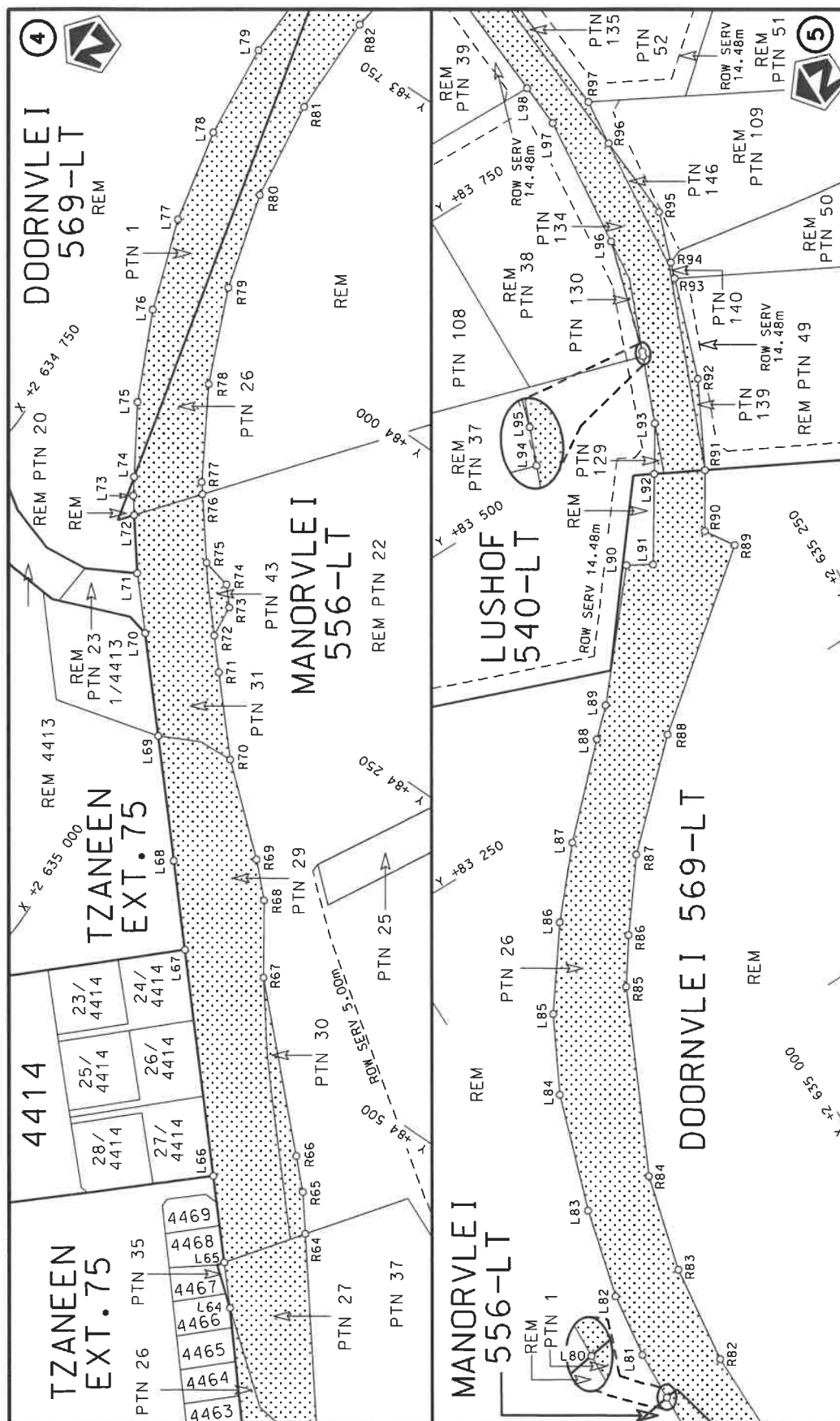


Die Suid Afrikaanse Nasionale Padagentskap MSB Bpk The South African National Roads Agency SOC Ltd	Die figuur getoon The figure shown	stel die padreserwe voor van 'n gedeelte represents the road reserve of a portion van Nasionale Roete R71 of National Route	Vel Sheet 2 Plan P1176/19
---	---------------------------------------	--	---------------------------------

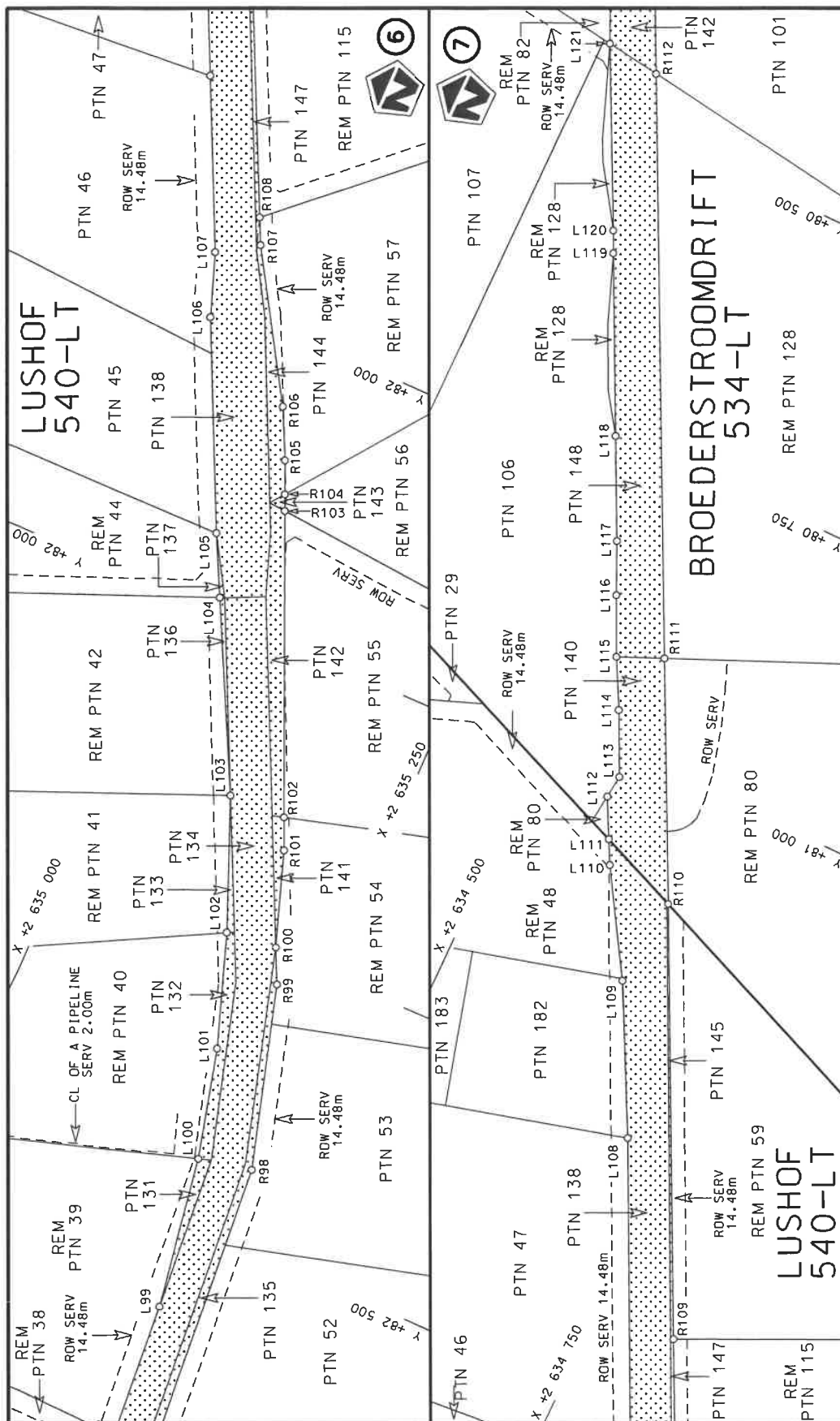



Die Suid Afrikaanse Nasionale Padagentskap MSB Bpk The South African National Roads Agency SOC Ltd	Die figuur getoon The figure shown	stel die padreserwe voor van 'n gedeelte represents the road reserve of a portion van Nasionale Roete of National Route	Vel Sheet 3 of 22 Plan P1176/19
---	---------------------------------------	--	---------------------------------------

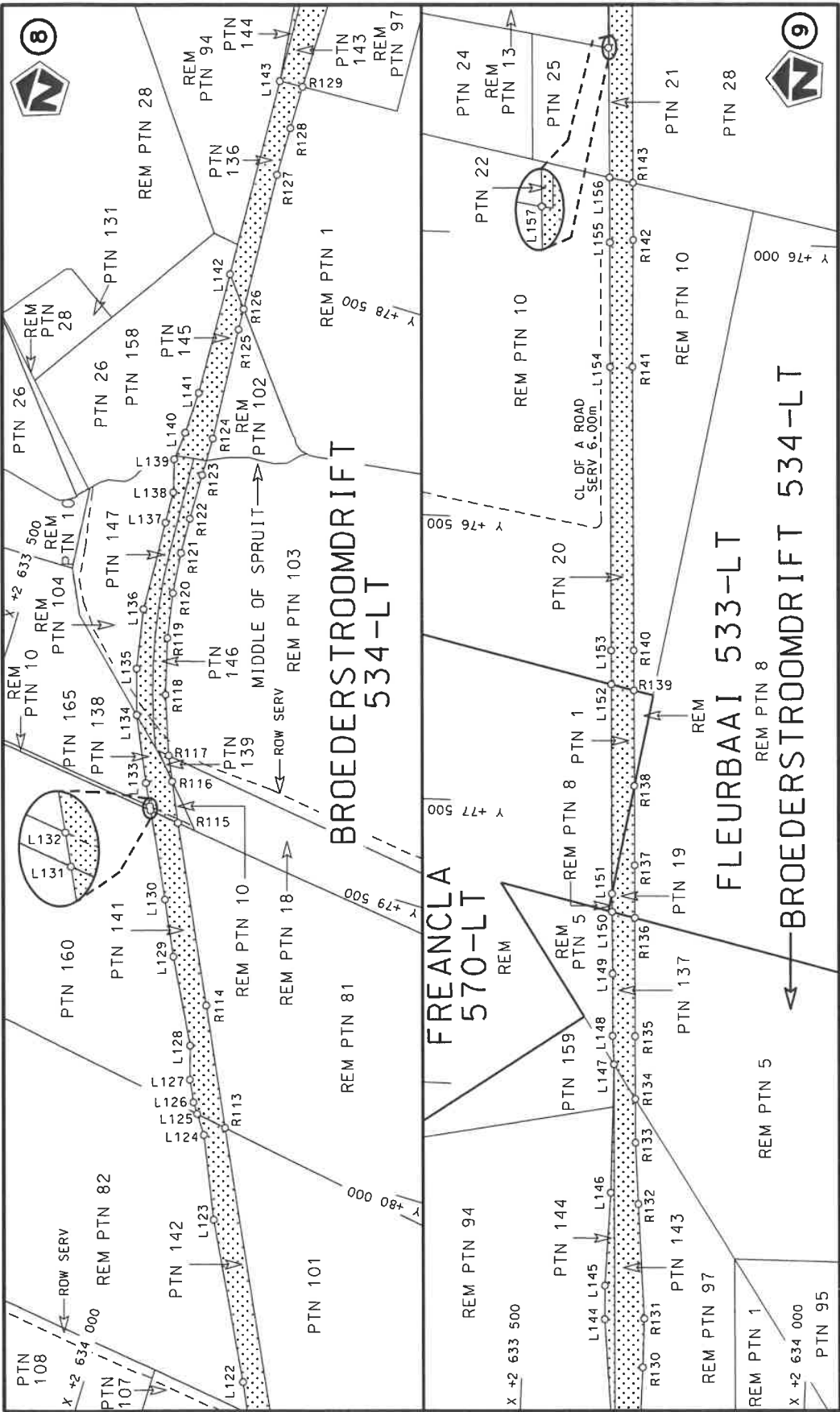




Die Suid Afrikaanse Nasionale Padagentskap MSB Bpk The South African National Roads Agency SOC Ltd	Die figuur getoon The figure shown	stelt die padreserwe voor van 'n gedeelte represents the road reserve of a portion van Nasionale Roete of National Route	2	R71	Seksie Section	Plan P1176/19
Vel Sheet 4 of 22						

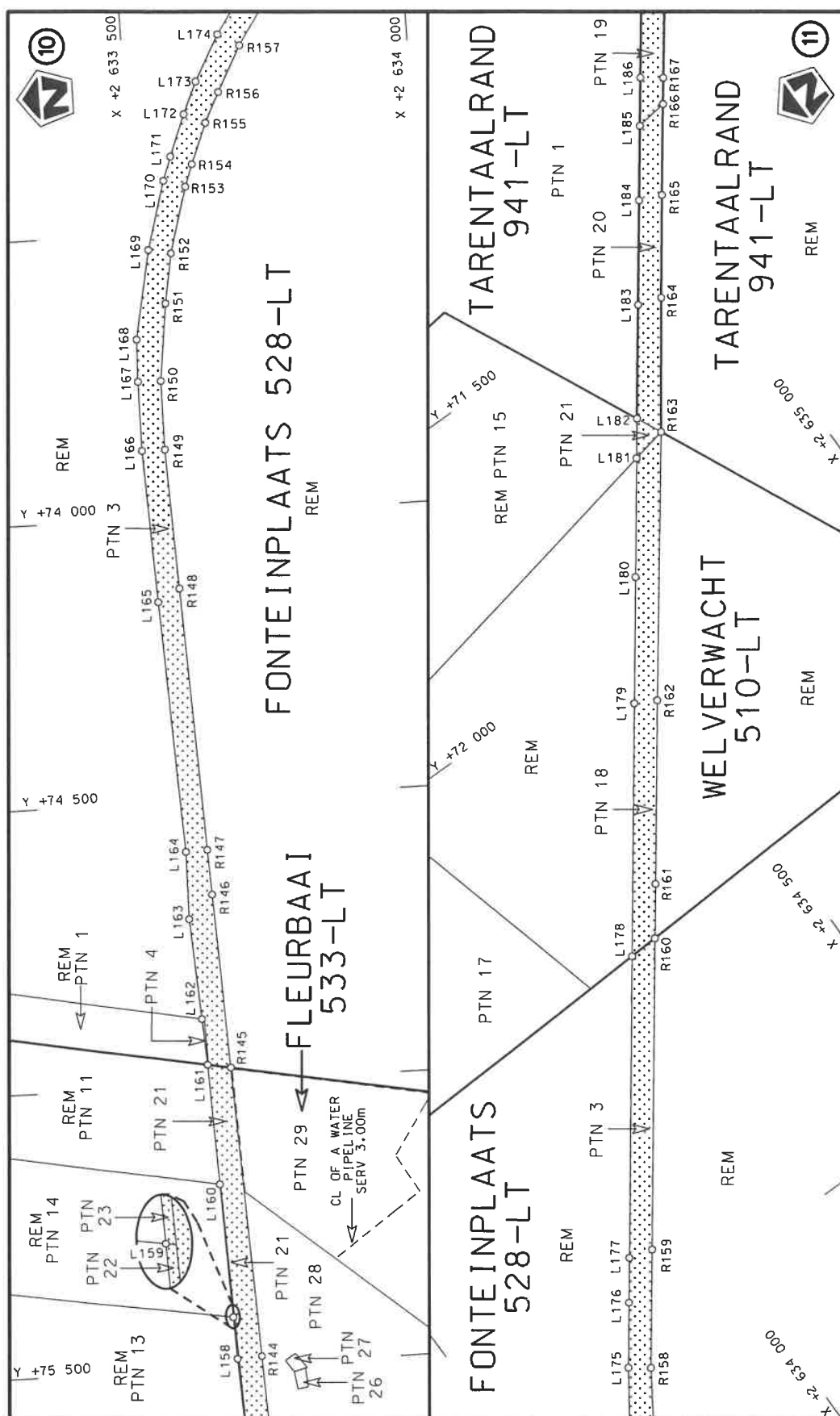



Die Suid Afrikaanse Nasionale Padagentskap MSB Bpk	Die figuur getoon		stel die padreserwe voor van 'n gedeelte represents the road reserve of a portion van Nasionale Roete R71 Seksie of National Route Section	Vel Sheet	5 of 22
The South African National Roads Agency SOC Ltd	The figure shown			2	Plan

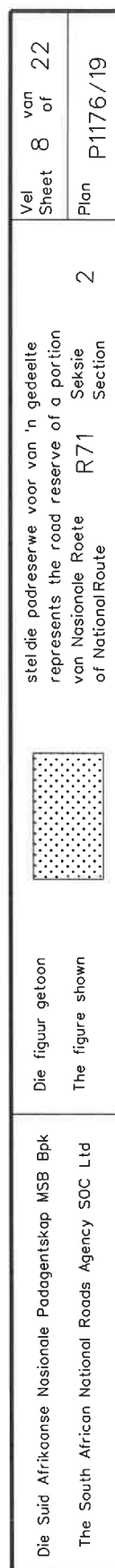


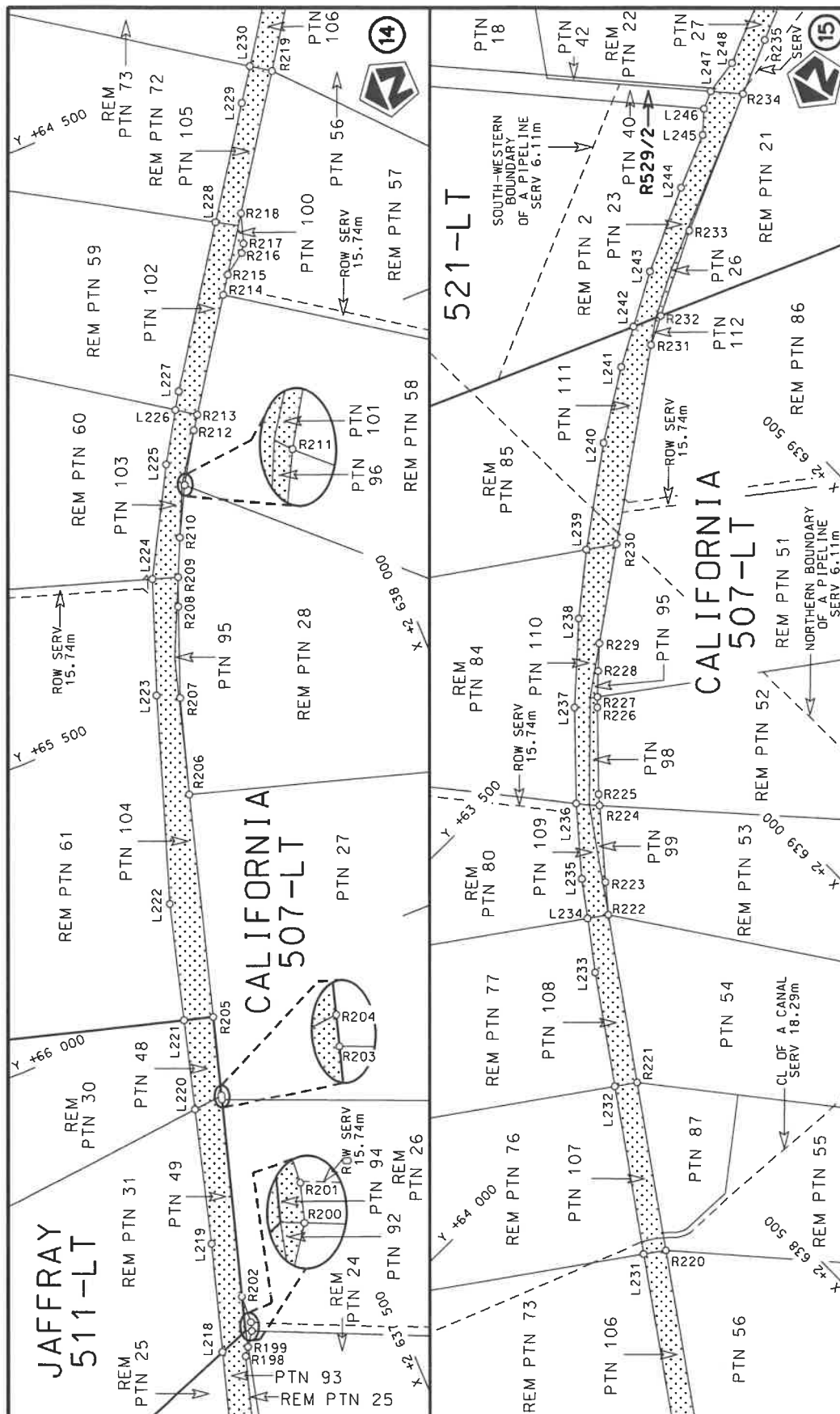
Die Suid Afrikaanse Nasionale Padagentskap MSB Bpk The South African National Roads Agency SOC Ltd		Die figuur getoon The figure shown		stel die padreserwe voor van 'n gedeelte represents the road reserve of a portion van Nasionale Roete R71 of National Route		Vel Sheet	van of	22
				2		Plan	P1176/19	



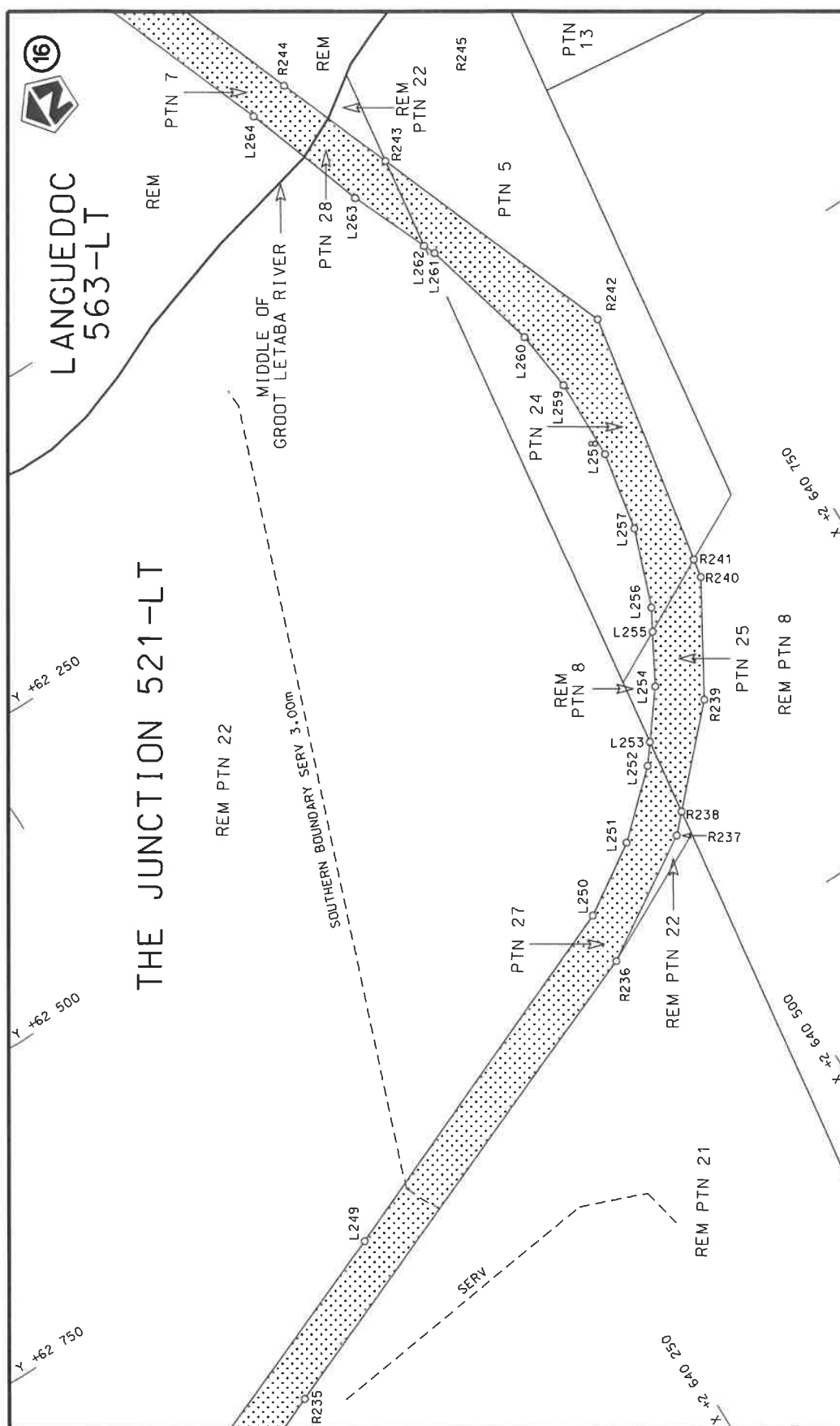


Die Suid Afrikaanse Nasionale Padagentskap MSB Bpk	Die figuur getoon		steldie padreserwe voor van 'n gedeelte represents the road reserve of a portion	Vel Sheet	7 of	22
The South African National Roads Agency SOC Ltd	The figure shown		van Nasionale Roete of National Route	R71 Section	Plan	P1176/19



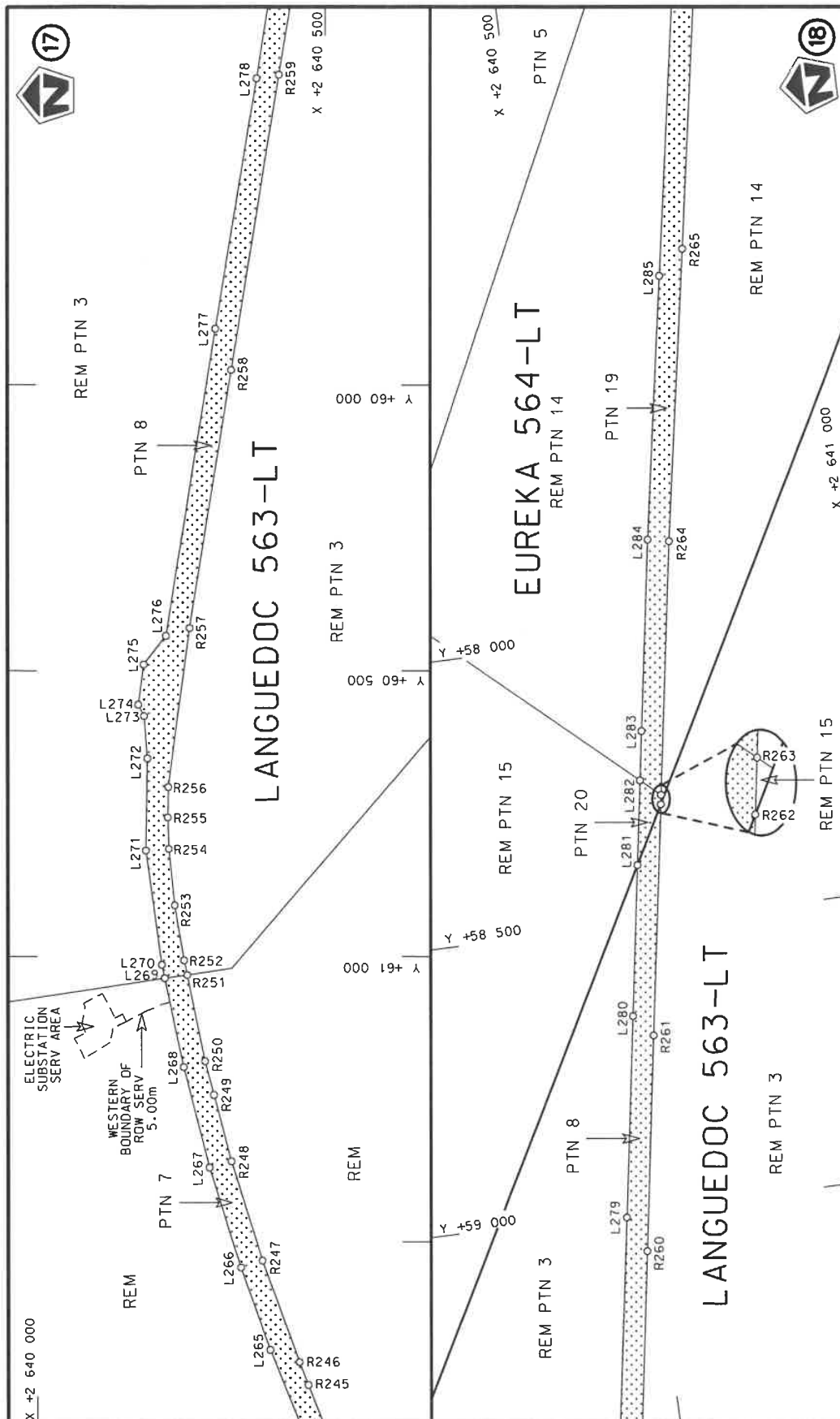


Die Suid Afrikaanse Nasionale Padagentskap MSB Bpk The South African National Roads Agency SOC Ltd	Die figuur getoon The figure shown	steldie padreserwe voor van 'n gedeelte represents the road reserve of a portion van Nasionale Roete R71 of National Route of National Route
Vel Sheet 9 of 22	Plan P1176/19	2

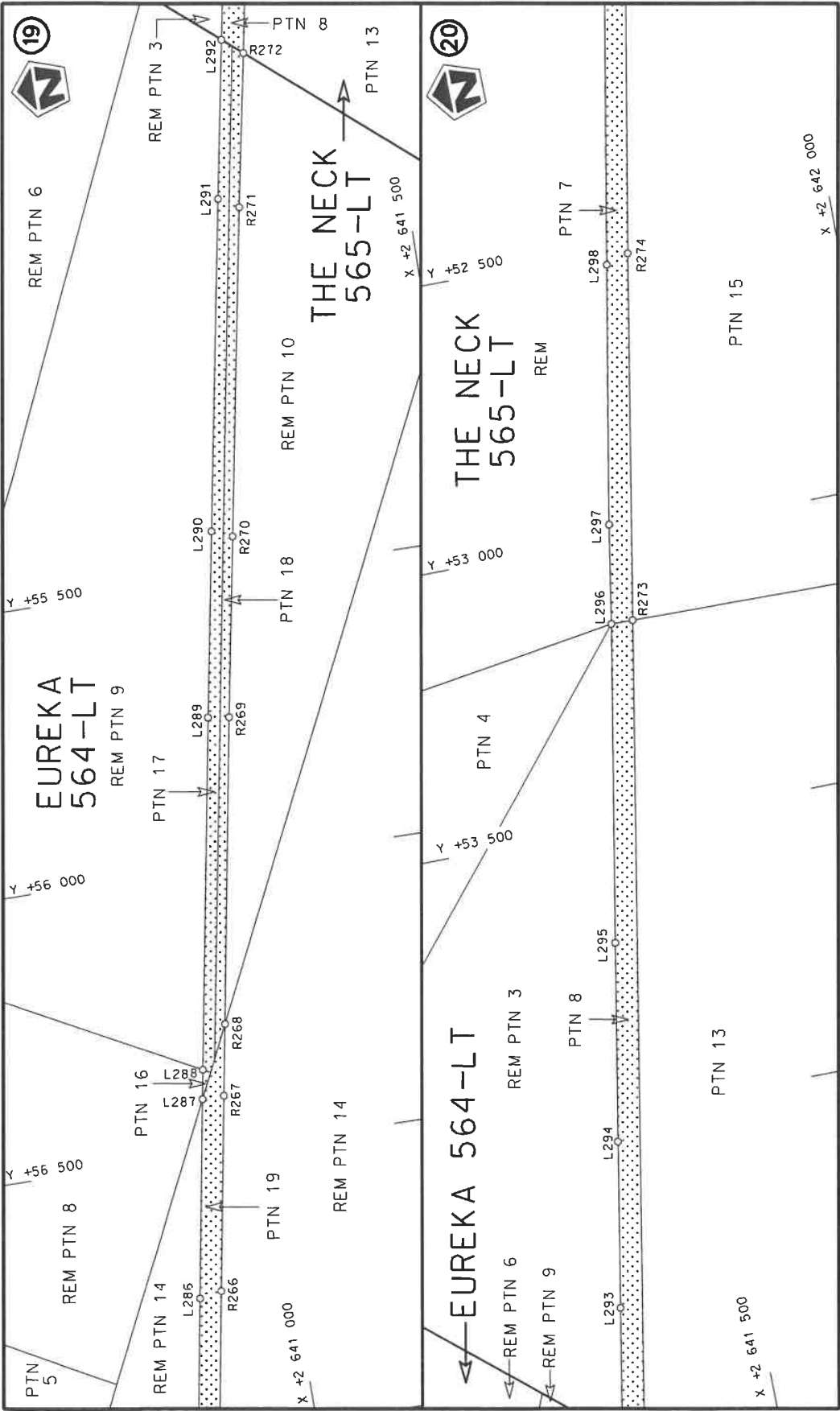


Die Suid Afrikaanse Nasionale Padagentskap MSB Bpk The South African National Roads Agency SOC Ltd	Die figuur getoon The figure shown	steldie padreserwe voor van 'n gedeelte represents the road reserve of a portion van Nasionale Roete R71 of National Route	Vel Sheet 10 of 22 Plan P1176/19
---	---------------------------------------	---	--

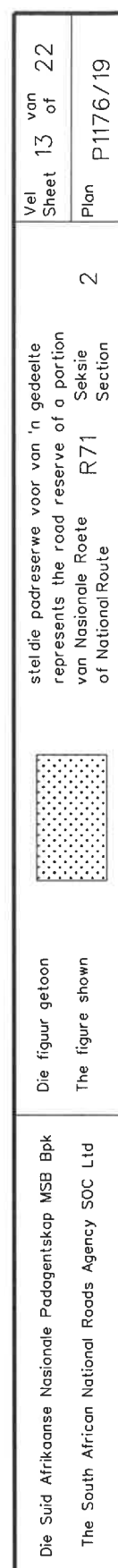


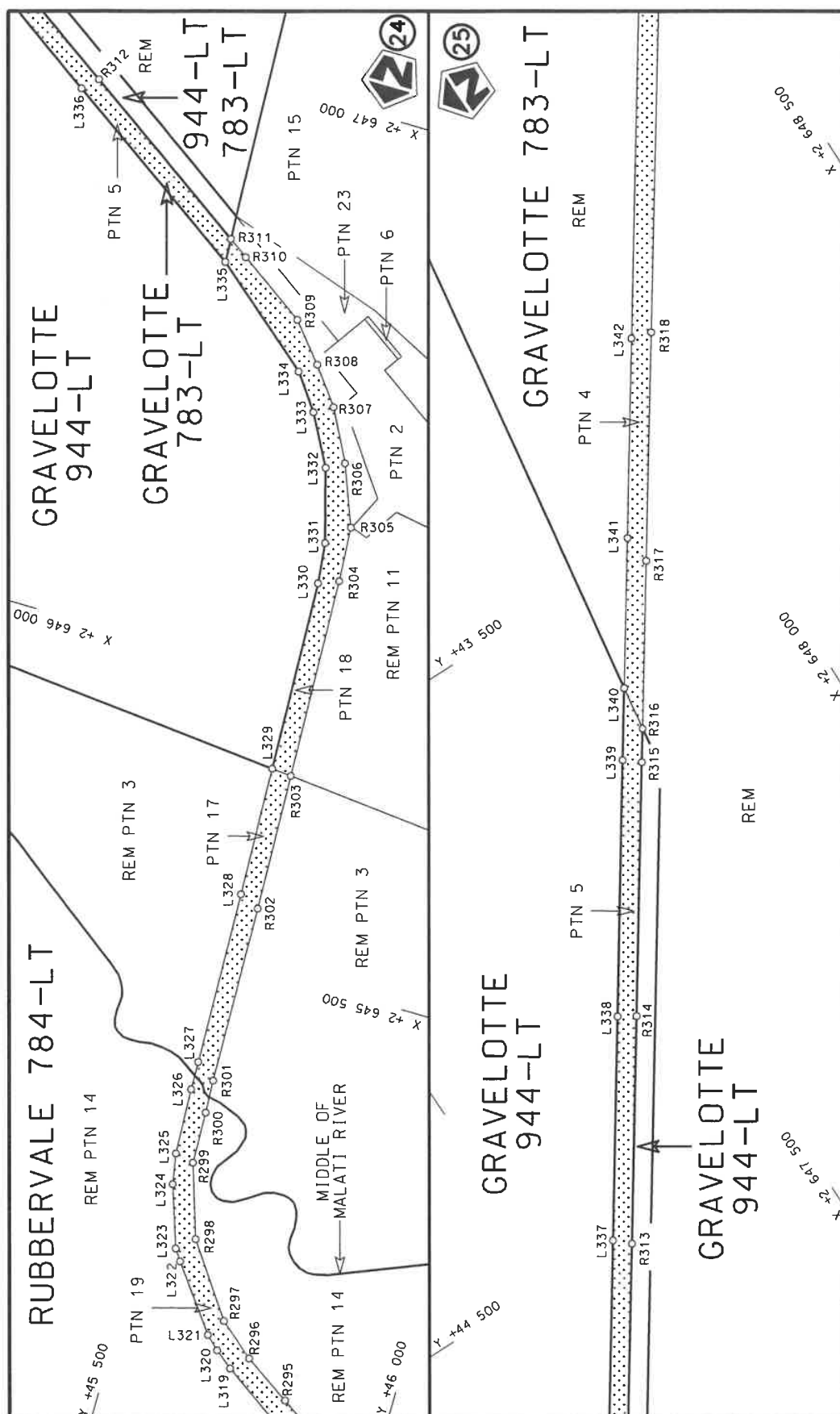



Die Suid Afrikaanse Nasionale Padagentskap MSB Bpk The South African National Roads Agency SOC Ltd	Die figuur getoon The figure shown	<div data-bbox="1300 1086 1380 1243" data-label="Image"> </div>	stel die padreserwe voor van 'n gedeelte represents the road reserve of a portion van Nasionale Roete R71 of National Route	Vel Sheet 11 of 22 Plan P1176/19
---	---------------------------------------	---	--	-------------------------------------



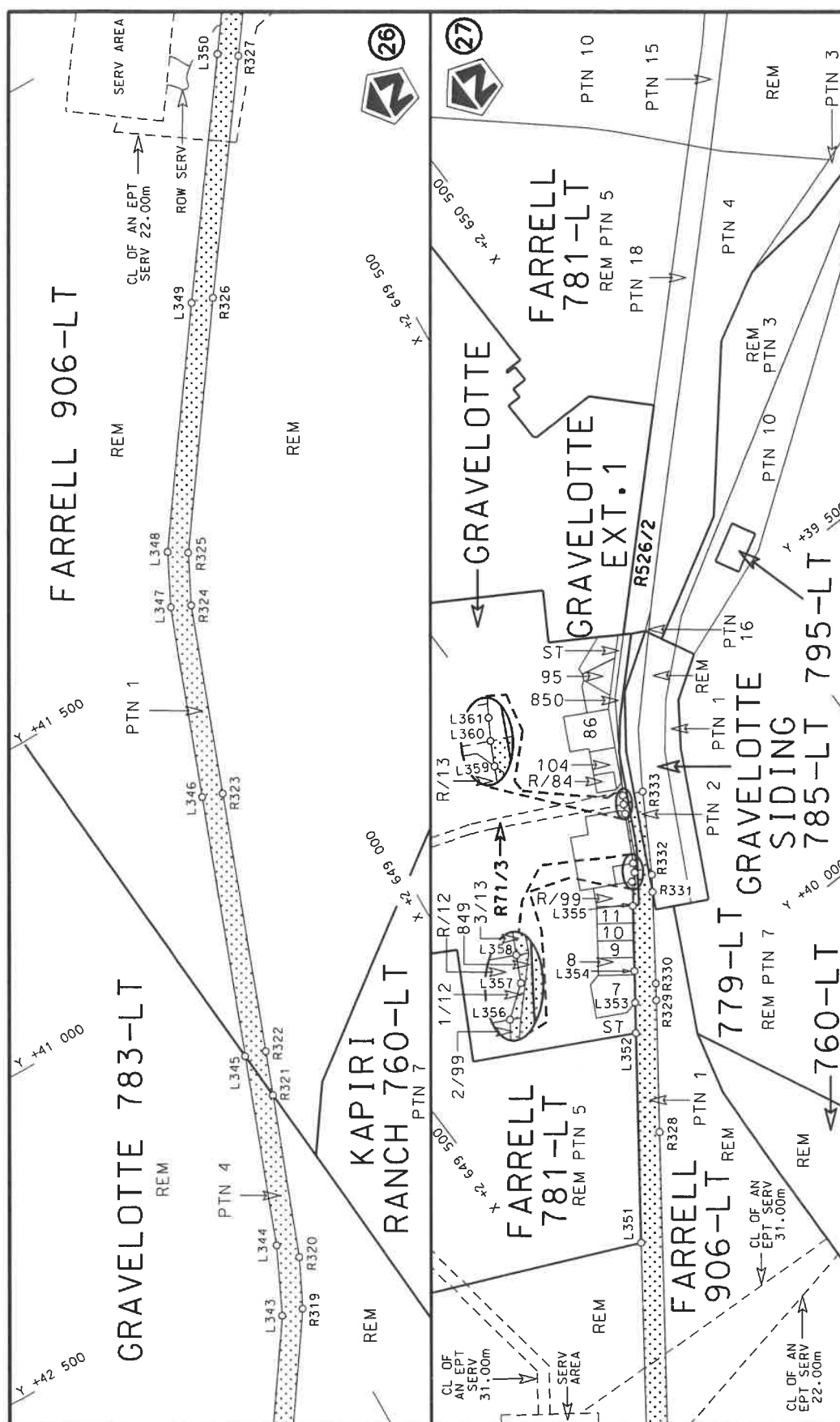
Vel Sheet 12 of 22 Plan P1176/19	stel die padreserwe voor van 'n gedeelte represents the road reserve of a portion van Nasionale Roete R71 Seksie of National Route Section 2	Die Suid Afrikaanse Nasionale Padagentskap MSB Bpk The South African National Roads Agency SOC Ltd
--	--	---






Die Suid Afrikaanse Nasionale Padagentskap MSB Bpk	Die figuur getoon		steldie padreserwe voor van 'n gedeelte represents the road reserve of a portion	Vel Sheet	14 of	22
The South African National Roads Agency SOC Ltd	The figure shown		van Nasionale Roete of National Route	2	Plan	P1176/19





Die Suid Afrikaanse Nasionale Padagentskap MSB Bpk	Die figuur getoon		steldie padreserwe voor van 'n gedeelte represents the road reserve of a portion van Nasionale Roete R71 of National Route	Vel Sheet	15 of	22
The South African National Roads Agency SOC Ltd	The figure shown			2	Plan	P1176/19

PADRESERWE KOÖRDINATE / ROAD RESERVE CO-ORDINATES									
LINKERKANT/LEFT HAND SIDE					REGTERKANT/RIGHT HAND SIDE				
	Y	X	WG 31°			Y	X		
L1	87 902.33	2 637 223.74		R1	87 845.44	2 637 260.53			
L2	87 861.98	2 637 178.07		R2	87 805.55	2 637 216.56			
L3	87 813.90	2 637 113.26		R3	87 759.43	2 637 160.01			
L4	87 771.36	2 637 044.69		R4	87 715.65	2 637 074.52			
L5	87 708.64	2 636 935.10		R5	87 666.78	2 636 980.41			
L6	87 659.84	2 636 876.25		R6	87 661.08	2 636 970.98			
L7	87 616.84	2 636 827.80		R7	87 658.83	2 636 967.29			
L8	87 562.80	2 636 781.15		R8	87 637.86	2 636 932.89			
L9	87 473.72	2 636 709.69		R9	87 625.52	2 636 916.05			
L10	87 472.96	2 636 717.69		R10	87 588.48	2 636 871.78			
L11	87 412.02	2 636 694.51		R11	87 545.88	2 636 832.89			
L12	87 351.88	2 636 679.90		R12	87 498.58	2 636 799.04			
L13	87 296.88	2 636 673.26		R13	87 448.29	2 636 772.19			
L14	87 283.81	2 636 671.70		R14	87 394.23	2 636 751.61			
L15	87 218.53	2 636 672.63		R15	87 338.19	2 636 738.02			
L16	87 133.44	2 636 679.10		R16	87 280.86	2 636 731.49			
L17	87 137.06	2 636 666.54		R17	87 223.19	2 636 732.34			
L18	87 088.31	2 636 682.66		R18	87 115.65	2 636 740.69			
L19	87 002.10	2 636 689.33		R19	86 858.71	2 636 760.14			
L20	86 918.49	2 636 695.80		R20	86 788.06	2 636 760.84			
L21	86 797.35	2 636 701.99		R21	86 730.71	2 636 754.77			
L22	86 783.77	2 636 700.37		R22	86 668.09	2 636 739.57			
L23	86 740.86	2 636 695.68		R23	86 663.19	2 636 737.74			
L24	86 716.07	2 636 689.68		R24	86 621.76	2 636 718.70			
L25	86 709.93	2 636 689.04		R25	86 558.87	2 636 687.54			
L26	86 664.97	2 636 672.78		R26	86 530.55	2 636 676.81			
L27	86 624.95	2 636 658.31		R27	86 482.51	2 636 658.46			
L28	86 620.33	2 636 655.88		R28	86 472.43	2 636 660.92			
L29	86 605.91	2 636 648.32		R29	86 458.40	2 636 648.49			
L30	86 581.42	2 636 636.42		R30	86 452.83	2 636 643.55			
L31	86 565.13	2 636 624.86		R31	86 461.51	2 636 633.63			
L32	86 534.04	2 636 602.81		R32	86 429.42	2 636 586.12			
L33	86 527.59	2 636 598.93		R33	86 277.47	2 636 431.82			
L34	86 504.90	2 636 584.84		R34	86 245.61	2 636 399.46			
L35	86 486.31	2 636 573.30		R35	86 231.93	2 636 385.38			
L36	86 313.21	2 636 400.18		R36	86 132.87	2 636 291.13			
L37	86 307.92	2 636 397.67		R37	86 123.36	2 636 279.60			
L38	86 173.49	2 636 241.06		R38	86 124.25	2 636 278.91			
L39	86 148.27	2 636 215.44		R39	86 077.03	2 636 232.52			
L40	86 123.74	2 636 170.12		R40	86 019.69	2 636 170.33			
L41	86 114.87	2 636 161.23		R41	85 962.50	2 636 117.09			
L42	86 093.40	2 636 139.71		R42	85 901.11	2 636 069.12			
L43	86 051.39	2 636 117.95		R43	85 835.84	2 636 027.05			
L44	86 001.43	2 636 071.46		R44	85 801.67	2 636 008.43			
L45	85 935.93	2 636 020.18		R45	85 726.54	2 635 970.69			
L46	85 866.49	2 635 975.42		R46	85 721.55	2 635 973.52			
L47	85 829.50	2 635 955.26		R47	85 717.17	2 636 019.66			
L48	85 803.51	2 635 942.21		R48	85 687.46	2 636 015.10			
L49	85 757.55	2 635 900.07		R49	85 692.63	2 635 960.54			
L50	85 729.08	2 635 816.37		R50	85 687.86	2 635 952.21			
L51	85 704.72	2 635 823.10		R51	85 653.81	2 635 935.96			
					Vel Sheet	16	Van of	22	P1176/19

PADRESERVE KOÖRDINATE / ROAD RESERVE CO-ORDINATES									
LINKERKANT/LEFT HAND SIDE					REGTERKANT/RIGHT HAND SIDE				
	Y	X	WG 31°			Y	X		
L52	85 702.35	2 635	850.34		R52	85 629.15	2 635	925.12	
L53	85 691.60	2 635	873.63		R53	85 609.93	2 635	911.23	
L54	85 643.78	2 635	877.45		R54	85 529.62	2 635	857.26	
L55	85 508.50	2 635	791.17		R55	85 471.33	2 635	820.60	
L56	85 401.34	2 635	732.32		R56	85 462.71	2 635	815.42	
L57	85 323.02	2 635	695.99		R57	85 387.94	2 635	770.50	
L58	85 010.55	2 635	568.85		R58	85 325.31	2 635	739.92	
L59	84 959.77	2 635	545.16		R59	85 067.98	2 635	632.94	
L60	84 901.63	2 635	513.85		R60	85 011.58	2 635	610.25	
L61	84 912.42	2 635	499.46		R61	84 899.28	2 635	559.24	
L62	84 865.78	2 635	464.02		R62	84 827.06	2 635	515.82	
L63	84 848.74	2 635	453.97		R63	84 782.84	2 635	481.44	
L64	84 717.75	2 635	342.82		R64	84 626.82	2 635	360.13	
L65	84 687.67	2 635	316.02		R65	84 597.82	2 635	337.58	
L66	84 630.69	2 635	265.14		R66	84 575.12	2 635	314.92	
L67	84 481.49	2 635	132.16		R67	84 462.55	2 635	202.80	
L68	84 422.81	2 635	079.86		R68	84 406.52	2 635	164.78	
L69	84 340.58	2 635	006.51		R69	84 380.83	2 635	138.90	
L70	84 273.02	2 634	946.26		R70	84 321.93	2 635	070.41	
L71	84 233.71	2 634	910.77		R71	84 264.54	2 635	018.88	
L72	84 193.35	2 634	879.69		R72	84 240.33	2 634	997.32	
L73	84 179.86	2 634	869.39		R73	84 212.64	2 634	994.10	
L74	84 165.92	2 634	860.70		R74	84 197.55	2 634	980.75	
L75	84 110.41	2 634	826.10		R75	84 191.67	2 634	955.41	
L76	84 036.31	2 634	790.97		R76	84 144.33	2 634	918.52	
L77	83 958.85	2 634	764.40		R77	84 135.97	2 634	912.03	
L78	83 878.69	2 634	746.82		R78	84 061.88	2 634	868.47	
L79	83 797.30	2 634	738.49		R79	83 982.83	2 634	834.75	
L80	83 732.99	2 634	740.92		R80	83 900.46	2 634	811.33	
L81	83 689.99	2 634	742.55		R81	83 815.33	2 634	799.50	
L82	83 634.04	2 634	749.61		R82	83 728.85	2 634	798.28	
L83	83 557.34	2 634	768.76		R83	83 642.98	2 634	808.58	
L84	83 457.95	2 634	801.29		R84	83 559.88	2 634	830.02	
L85	83 394.81	2 634	833.83		R85	83 408.36	2 634	900.77	
L86	83 329.59	2 634	881.08		R86	83 371.07	2 634	926.36	
L87	83 276.05	2 634	927.30		R87	83 314.50	2 634	969.26	
L88	83 210.69	2 634	993.08		R88	83 239.69	2 635	047.97	
L89	83 189.40	2 635	015.49		R89	83 129.71	2 635	185.43	
L90	83 094.87	2 635	095.61		R90	83 105.56	2 635	169.48	
L91	83 106.52	2 635	115.76		R91	83 060.26	2 635	197.72	
L92	83 039.74	2 635	158.37		R92	82 989.07	2 635	234.48	
L93	83 002.50	2 635	182.13		R93	82 903.73	2 635	263.36	
L94	82 947.14	2 635	204.22		R94	82 890.26	2 635	267.92	
L95	82 943.17	2 635	205.80		R95	82 847.36	2 635	282.44	
L96	82 847.12	2 635	233.33		R96	82 773.07	2 635	276.59	
L97	82 732.31	2 635	244.39		R97	82 733.04	2 635	280.45	
L98	82 694.73	2 635	241.43		R98	82 434.00	2 635	256.91	
L99	82 575.99	2 635	232.08		R99	82 276.37	2 635	211.71	
L100	82 443.82	2 635	210.65		R100	82 247.09	2 635	197.81	
L101	82 348.74	2 635	186.56		R101	82 166.33	2 635	169.99	
L102	82 252.32	2 635	153.32		R102	82 139.79	2 635	158.37	
					<div> <div>Vel</div> <div>17</div> <div>Van</div> <div>22</div> <div>Sheet</div> <div>of</div> <div>P1176/19</div> </div>				

PADRESERWE KOÖRDINATE / ROAD RESERVE CO-ORDINATES														
LINKERKANT/LEFT HAND SIDE					REGTERKANT/RIGHT HAND SIDE									
	Y		X	WG 31°		Y		X						
L103	82 141.17	2	635	107.81	R103	81 894.19	2	635	050.87					
L104	81 986.38	2	635	029.58	R104	81 880.94	2	635	045.07					
L105	81 935.98	2	635	004.10	R105	81 853.69	2	635	033.14					
L106	81 765.33	2	634	923.09	R106	81 811.38	2	635	012.42					
L107	81 711.65	2	634	903.87	R107	81 690.22	2	634	937.57					
L108	81 304.98	2	634	710.79	R108	81 668.23	2	634	927.02					
L109	81 181.85	2	634	648.33	R109	81 447.79	2	634	821.32					
L110	81 094.60	2	634	595.58	R110	81 103.88	2	634	656.41					
L111	81 074.41	2	634	585.31	R111	80 910.26	2	634	562.62					
L112	81 041.16	2	634	568.39	R112	80 450.35	2	634	339.83					
L113	81 021.18	2	634	570.75	R113	79 972.38	2	634	109.71					
L114	80 968.20	2	634	545.58	R114	79 774.92	2	634	015.69					
L115	80 926.86	2	634	523.99	R115	79 480.80	2	633	875.14					
L116	80 878.04	2	634	501.16	R116	79 413.61	2	633	844.58					
L117	80 834.84	2	634	481.57	R117	79 371.35	2	633	825.40					
L118	80 752.05	2	634	441.74	R118	79 270.37	2	633	789.17					
L119	80 608.07	2	634	372.32	R119	79 173.67	2	633	763.74					
L120	80 590.09	2	634	363.91	R120	79 095.05	2	633	750.39					
L121	80 443.52	2	634	292.14	R121	79 023.43	2	633	743.53					
L122	80 393.31	2	634	269.05	R122	78 960.92	2	633	740.97					
L123	80 133.84	2	634	137.23	R123	78 880.93	2	633	740.03					
L124	79 995.00	2	634	077.51	R124	78 813.77	2	633	739.21					
L125	79 963.00	2	634	055.45	R125	78 616.84	2	633	727.60					
L126	79 945.44	2	634	043.26	R126	78 579.81	2	633	725.77					
L127	79 908.95	2	634	025.49	R127	78 336.47	2	633	713.74					
L128	79 851.09	2	634	008.66	R128	78 251.12	2	633	712.43					
L129	79 708.86	2	633	935.42	R129	78 175.37	2	633	712.03					
L130	79 616.78	2	633	891.96	R130	77 988.94	2	633	712.80					
L131	79 473.64	2	633	822.11	R131	77 902.70	2	633	712.37					
L132	79 466.77	2	633	818.82	R132	77 700.84	2	633	694.28					
L133	79 429.51	2	633	800.58	R133	77 592.70	2	633	685.39					
L134	79 319.45	2	633	750.82	R134	77 515.66	2	633	682.11					
L135	79 241.03	2	633	727.23	R135	77 404.88	2	633	677.38					
L136	79 137.06	2	633	708.32	R136	77 196.00	2	633	669.02					
L137	78 979.86	2	633	701.86	R137	77 103.40	2	633	665.32					
L138	78 924.76	2	633	699.90	R138	76 963.29	2	633	659.36					
L139	78 868.38	2	633	684.82	R139	76 794.96	2	633	652.20					
L140	78 817.99	2	633	689.58	R140	76 724.54	2	633	649.21					
L141	78 743.99	2	633	692.58	R141	76 225.35	2	633	627.88					
L142	78 527.74	2	633	685.07	R142	76 001.87	2	633	620.30					
L143	78 177.03	2	633	671.00	R143	75 901.50	2	633	616.09					
L144	77 906.53	2	633	642.90	R144	75 485.96	2	633	598.03					
L145	77 847.00	2	633	641.02	R145	74 974.60	2	633	576.73					
L146	77 682.84	2	633	644.90	R146	74 668.06	2	633	563.81					
L147	77 456.00	2	633	642.10	R147	74 588.88	2	633	560.43					
L148	77 405.80	2	633	637.77	R148	74 126.54	2	633	541.29					
L149	77 296.14	2	633	633.67	R149	73 880.97	2	633	531.08					
L150	77 186.94	2	633	628.75	R150	73 760.09	2	633	531.64					
L151	77 154.94	2	633	627.41	R151	73 624.49	2	633	548.49					
L152	76 785.92	2	633	612.02	R152	73 537.03	2	633	564.12					
L153	76 726.19	2	633	609.53	R153	73 421.83	2	633	596.58					
					<table><tr><td>Vel Sheet</td><td>18</td><td>Van of</td><td>22</td><td>P1176/19</td></tr></table>					Vel Sheet	18	Van of	22	P1176/19
Vel Sheet	18	Van of	22	P1176/19										



PADRESERVE KOÖRDINATE / ROAD RESERVE CO-ORDINATES														
LINKERKANT/LEFT HAND SIDE					REGTERKANT/RIGHT HAND SIDE									
	Y		X	WG 31°		Y		X						
L154	76	227.16	2	633	588.67	R154	73	383.04	2	633	610.33			
L155	76	007.74	2	633	579.67	R155	73	312.24	2	633	638.86			
L156	75	893.42	2	633	574.35	R156	73	259.64	2	633	664.57			
L157	75	665.82	2	633	563.61	R157	73	180.33	2	633	706.51			
L158	75	487.94	2	633	555.15	R158	73	068.70	2	633	780.04			
L159	75	414.01	2	633	552.50	R159	72	900.71	2	633	904.06			
L160	75	178.76	2	633	544.05	R160	72	458.98	2	634	229.79			
L161	74	967.03	2	633	536.45	R161	72	381.61	2	634	286.84			
L162	74	885.94	2	633	531.50	R162	72	121.38	2	634	478.87			
L163	74	708.85	2	633	520.67	R163	71	742.73	2	634	761.29			
L164	74	590.05	2	633	522.57	R164	71	551.38	2	634	899.59			
L165	74	148.30	2	633	502.45	R165	71	405.70	2	635	006.33			
L166	73	880.70	2	633	491.48	R166	71	277.25	2	635	101.13			
L167	73	759.14	2	633	492.19	R167	71	240.23	2	635	128.45			
L168	73	685.10	2	633	494.56	R168	71	046.37	2	635	273.28			
L169	73	528.72	2	633	524.93	R169	71	019.65	2	635	293.49			
L170	73	409.09	2	633	558.60	R170	71	000.14	2	635	308.25			
L171	73	367.29	2	633	573.50	R171	70	826.13	2	635	439.49			
L172	73	294.80	2	633	601.84	R172	70	800.03	2	635	459.20			
L173	73	238.62	2	633	626.05	R173	70	760.86	2	635	488.74			
L174	73	158.31	2	633	669.68	R174	70	448.08	2	635	715.92			
L175	73	045.17	2	633	747.90	R175	70	131.45	2	635	946.16			
L176	72	952.70	2	633	816.14	R176	69	955.94	2	636	075.72			
L177	72	889.09	2	633	862.95	R177	69	856.57	2	636	150.98			
L178	72	461.24	2	634	178.82	R178	69	780.27	2	636	196.47			
L179	72	102.48	2	634	443.05	R179	69	669.66	2	636	248.69			
L180	71	923.37	2	634	575.24	R180	69	510.38	2	636	302.01			
L181	71	755.04	2	634	699.38	R181	69	324.41	2	636	360.15			
L182	71	699.06	2	634	740.66	R182	69	282.32	2	636	389.88			
L183	71	537.86	2	634	859.54	R183	69	265.80	2	636	387.40			
L184	71	389.99	2	634	968.39	R184	69	216.75	2	636	393.02			
L185	71	284.55	2	635	046.15	R185	69	005.42	2	636	458.87			
L186	71	216.51	2	635	096.33	R186	68	849.89	2	636	506.87			
L187	71	033.80	2	635	231.29	R187	68	598.27	2	636	587.78			
L188	70	947.57	2	635	294.89	R188	68	221.91	2	636	705.77			
L189	70	844.47	2	635	370.93	R189	68	117.19	2	636	738.60			
L190	70	786.81	2	635	413.42	R190	67	680.10	2	636	875.69			
L191	70	720.92	2	635	461.98	R191	67	620.39	2	636	894.42			
L192	70	523.02	2	635	608.23	R192	67	580.83	2	636	922.44			
L193	70	107.23	2	635	914.70	R193	67	559.27	2	636	928.59			
L194	70	045.76	2	635	960.09	R194	67	506.17	2	636	929.58			
L195	69	934.69	2	636	042.11	R195	67	467.79	2	636	941.66			
L196	69	834.56	2	636	109.62	R196	66	943.18	2	637	106.70			
L197	69	724.93	2	636	171.56	R197	66	752.44	2	637	166.35			
L198	69	614.01	2	636	222.34	R198	66	582.64	2	637	219.60			
L199	69	497.52	2	636	264.24	R199	66	569.03	2	637	229.64			
L200	69	317.33	2	636	320.61	R200	66	545.87	2	637	246.72			
L201	69	270.35	2	636	318.87	R201	66	531.02	2	637	251.35			
L202	69	242.07	2	636	328.15	R202	66	483.51	2	637	254.75			
L203	69	023.75	2	636	408.15	R203	66	150.65	2	637	358.70			
L204	68	908.59	2	636	447.86	R204	66	143.96	2	637	360.79			
					<table><tr><td>Vel Sheet</td><td>19</td><td>Van of</td><td>22</td><td>P1176/19</td></tr></table>					Vel Sheet	19	Van of	22	P1176/19
Vel Sheet	19	Van of	22	P1176/19										

PADRESERVE KOÖRDINATE / ROAD RESERVE CO-ORDINATES																			
LINKERKANT/LEFT HAND SIDE					REGTERKANT/RIGHT HAND SIDE														
	Y	X	WG 31°			Y	X												
L205	68 773.14	2 636 486.85			R205	66 011.36	2 637 401.89												
L206	68 591.93	2 636 529.12			R206	65 634.91	2 637 516.87												
L207	68 563.57	2 636 541.01			R207	65 472.68	2 637 568.86												
L208	68 523.97	2 636 569.73			R208	65 323.81	2 637 628.82												
L209	68 497.26	2 636 578.07			R209	65 276.11	2 637 648.90												
L210	68 231.36	2 636 661.11			R210	65 213.23	2 637 678.95												
L211	68 075.28	2 636 709.87			R211	65 131.55	2 637 722.59												
L212	67 734.45	2 636 816.78			R212	65 049.28	2 637 775.37												
L213	67 554.40	2 636 872.96			R213	65 026.69	2 637 791.34												
L214	67 519.39	2 636 883.98			R214	64 850.92	2 637 915.64												
L215	67 388.73	2 636 925.09			R215	64 821.22	2 637 936.64												
L216	66 931.27	2 637 069.05			R216	64 795.85	2 637 973.85												
L217	66 734.32	2 637 130.37			R217	64 781.92	2 637 983.49												
L218	66 559.87	2 637 185.20			R218	64 731.24	2 638 000.24												
L219	66 377.14	2 637 242.62			R219	64 522.92	2 638 147.50												
L220	66 148.23	2 637 308.78			R220	64 278.22	2 638 320.52												
L221	65 996.55	2 637 352.62			R221	64 033.58	2 638 493.51												
L222	65 798.51	2 637 409.86			R222	63 788.94	2 638 666.49												
L223	65 452.35	2 637 532.12			R223	63 744.75	2 638 703.56												
L224	65 261.20	2 637 605.62			R224	63 642.43	2 638 791.40												
L225	65 085.52	2 637 706.56			R225	63 627.24	2 638 804.44												
L226	65 004.22	2 637 759.55			R226	63 517.68	2 638 910.59												
L227	64 976.25	2 637 777.78			R227	63 505.05	2 638 923.87												
L228	64 728.29	2 637 952.97			R228	63 473.58	2 638 956.95												
L229	64 554.12	2 638 077.13			R229	63 440.61	2 638 992.87												
L230	64 500.13	2 638 115.27			R230	63 338.75	2 639 137.24												
L231	64 255.34	2 638 288.16			R231	63 133.91	2 639 427.35												
L232	64 010.78	2 638 461.26			R232	63 109.86	2 639 475.49												
L233	63 844.46	2 638 578.30			R233	63 039.50	2 639 616.33												
L234	63 767.64	2 638 636.36			R234	62 936.16	2 639 852.58												
L235	63 711.96	2 638 678.43			R235	62 896.08	2 639 945.98												
L236	63 611.03	2 638 765.09			R236	62 712.20	2 640 379.17												
L237	63 489.43	2 638 882.30			R237	62 646.20	2 640 481.77												
L238	63 384.45	2 638 997.94			R238	62 630.66	2 640 496.38												
L239	63 307.91	2 639 093.02			R239	62 557.79	2 640 564.86												
L240	63 196.79	2 639 246.69			R240	62 465.01	2 640 618.41												
L241	63 124.47	2 639 362.82			R241	62 448.53	2 640 621.27												
L242	63 089.25	2 639 428.22			R242	62 225.93	2 640 659.91												
L243	63 041.45	2 639 516.96			R243	62 011.41	2 640 574.99												
L244	62 975.92	2 639 659.36			R244	61 909.10	2 640 533.87												
L245	62 937.11	2 639 751.75			R245	61 751.15	2 640 472.49												
L246	62 906.14	2 639 785.18			R246	61 711.36	2 640 457.10												
L247	62 892.99	2 639 815.72			R247	61 533.09	2 640 392.29												
L248	62 884.46	2 639 877.10			R248	61 359.20	2 640 338.31												
L249	62 805.91	2 640 063.39			R249	61 242.98	2 640 307.57												
L250	62 667.52	2 640 382.69			R250	61 183.92	2 640 292.15												
L251	62 628.61	2 640 441.31			R251	61 032.70	2 640 260.33												
L252	62 581.10	2 640 492.03			R252	61 007.16	2 640 254.96												
L253	62 564.28	2 640 504.80			R253	60 910.96	2 640 238.57												
L254	62 525.44	2 640 534.29			R254	60 812.02	2 640 227.87												
L255	62 483.44	2 640 557.43			R255	60 756.99	2 640 226.06												
					<table><tr><td>Vel</td><td>20</td><td>Van</td><td>22</td><td>P1176/19</td></tr><tr><td>Sheet</td><td></td><td>of</td><td></td><td></td></tr></table>					Vel	20	Van	22	P1176/19	Sheet		of		
Vel	20	Van	22	P1176/19															
Sheet		of																	

PADRESERVE KOÖRDINATE / ROAD RESERVE CO-ORDINATES									
LINKERKANT/LEFT HAND SIDE					REGTERKANT/RIGHT HAND SIDE				
	Y	X	WG 31°			Y	X		
L256	62 464.91	2 640 567.63		R256	60 703.83	2 640 227.14			
L257	62 398.23	2 640 591.24		R257	60 425.52	2 640 264.51			
L258	62 329.58	2 640 603.59		R258	59 974.21	2 640 337.14			
L259	62 259.47	2 640 604.57		R259	59 458.56	2 640 419.99			
L260	62 206.15	2 640 597.79		R260	59 071.74	2 640 482.20			
L261	62 102.34	2 640 569.18		R261	58 698.00	2 640 542.00			
L262	62 092.14	2 640 564.74		R262	58 298.35	2 640 606.55			
L263	62 025.15	2 640 535.58		R263	58 282.03	2 640 609.19			
L264	61 917.88	2 640 497.22		R264	57 843.77	2 640 679.98			
L265	61 689.90	2 640 406.21		R265	57 339.75	2 640 768.26			
L266	61 545.31	2 640 354.98		R266	56 744.49	2 640 871.74			
L267	61 370.28	2 640 300.04		R267	56 404.40	2 640 931.18			
L268	61 194.05	2 640 254.44		R268	56 279.38	2 640 953.29			
L269	61 038.62	2 640 221.02		R269	55 745.69	2 641 046.25			
L270	61 015.18	2 640 215.98		R270	55 431.62	2 641 102.95			
L271	60 814.79	2 640 188.07		R271	54 860.33	2 641 206.01			
L272	60 653.66	2 640 190.70		R272	54 593.42	2 641 255.90			
L273	60 579.60	2 640 185.16		R273	53 148.82	2 641 517.37			
L274	60 559.61	2 640 174.63		R274	52 512.22	2 641 632.39			
L275	60 489.39	2 640 184.29		R275	51 956.48	2 641 735.75			
L276	60 439.35	2 640 222.80		R276	51 028.47	2 641 908.93			
L277	59 902.04	2 640 309.39		R277	50 495.04	2 642 008.26			
L278	59 464.88	2 640 380.65		R278	49 847.24	2 642 130.52			
L279	59 008.56	2 640 454.25		R279	49 797.20	2 642 144.48			
L280	58 659.97	2 640 510.56		R280	49 734.88	2 642 169.61			
L281	58 398.64	2 640 552.49		R281	49 665.23	2 642 207.65			
L282	58 252.16	2 640 576.00		R282	49 216.74	2 642 507.37			
L283	58 166.90	2 640 589.68		R283	49 071.23	2 642 604.74			
L284	57 836.28	2 640 643.66		R284	48 808.95	2 642 779.57			
L285	57 381.58	2 640 722.79		R285	48 588.87	2 642 926.08			
L286	56 751.46	2 640 832.81		R286	48 519.59	2 642 975.06			
L287	56 404.36	2 640 893.00		R287	48 301.09	2 643 119.30			
L288	56 353.07	2 640 901.99		R288	48 134.61	2 643 230.82			
L289	55 740.40	2 641 009.48		R289	47 882.78	2 643 399.24			
L290	55 416.91	2 641 067.52		R290	47 547.19	2 643 623.61			
L291	54 840.11	2 641 171.58		R291	47 402.26	2 643 720.53			
L292	54 564.29	2 641 221.56		R292	47 088.49	2 643 930.07			
L293	54 337.11	2 641 262.73		R293	46 639.48	2 644 230.98			
L294	54 047.71	2 641 314.84		R294	46 237.18	2 644 500.07			
L295	53 702.04	2 641 377.79		R295	45 817.32	2 644 780.28			
L296	53 148.31	2 641 479.23		R296	45 736.16	2 644 833.93			
L297	52 975.33	2 641 508.72		R297	45 675.48	2 644 885.18			
L298	52 524.97	2 641 592.29		R298	45 587.77	2 645 009.95			
L299	51 971.09	2 641 695.12		R299	45 546.00	2 645 138.02			
L300	51 007.68	2 641 875.15		R300	45 542.87	2 645 229.12			
L301	50 482.19	2 641 973.20		R301	45 539.80	2 645 287.22			
L302	49 851.13	2 642 090.72		R302	45 530.63	2 645 600.58			
L303	49 745.89	2 642 122.96		R303	45 521.38	2 645 841.21			
L304	49 702.54	2 642 143.46		R304	45 507.81	2 646 194.31			
L305	49 643.80	2 642 176.53		R305	45 501.49	2 646 290.60			
L306	49 265.08	2 642 429.52		R306	45 459.78	2 646 396.47			
					Vel Sheet	21	Van of	22	P1176/19

PADRESERVE KOÖRDINATE / ROAD RESERVE CO-ORDINATES									
LINKERKANT/LEFT HAND SIDE					REGTERKANT/RIGHT HAND SIDE				
	Y		X	WG 31°		Y		X	
L307	49 071.01	2	642	559.58	R307	45 412.97	2	646	485.69
L308	48 791.61	2	642	746.42	R308	45 364.52	2	646	549.67
L309	48 509.91	2	642	934.52	R309	45 309.01	2	646	615.65
L310	48 276.36	2	643	090.49	R310	45 191.33	2	646	696.25
L311	48 120.54	2	643	194.87	R311	45 157.25	2	646	719.54
L312	47 853.09	2	643	373.90	R312	44 857.69	2	646	924.28
L313	47 523.92	2	643	594.41	R313	44 526.60	2	647	151.05
L314	47 372.18	2	643	695.19	R314	44 195.15	2	647	377.68
L315	47 065.37	2	643	900.54	R315	43 825.81	2	647	630.55
L316	46 601.91	2	644	210.26	R316	43 776.89	2	647	664.02
L317	46 219.16	2	644	466.26	R317	43 533.10	2	647	830.80
L318	45 811.05	2	644	738.26	R318	43 201.25	2	648	057.96
L319	45 709.41	2	644	807.50	R319	42 604.56	2	648	465.88
L320	45 678.57	2	644	831.93	R320	42 522.97	2	648	505.47
L321	45 655.65	2	644	853.45	R321	42 253.33	2	648	606.80
L322	45 572.60	2	644	964.73	R322	42 180.36	2	648	634.22
L323	45 559.03	2	644	984.24	R323	41 750.75	2	648	793.32
L324	45 522.21	2	645	091.89	R324	41 437.22	2	648	909.23
L325	45 512.80	2	645	145.50	R325	41 354.34	2	648	950.63
L326	45 506.84	2	645	261.73	R326	40 987.82	2	649	208.80
L327	45 505.50	2	645	311.27	R327	40 641.46	2	649	456.15
L328	45 495.48	2	645	616.50	R328	40 166.06	2	649	794.52
L329	45 486.42	2	645	844.48	R329	39 977.88	2	649	928.97
L330	45 473.08	2	646	180.35	R330	39 953.70	2	649	946.25
L331	45 465.14	2	646	252.14	R331	39 822.00	2	650	038.07
L332	45 429.24	2	646	379.54	R332	39 797.11	2	650	055.43
L333	45 381.39	2	646	467.40	R333	39 671.12	2	650	130.29
L334	45 336.45	2	646	528.82	LINKERKANT/LEFT HAND SIDE				
L335	45 159.17	2	646	678.12					
L336	44 832.88	2	646	900.67					
L337	44 503.53	2	647	126.02					
L338	44 177.41	2	647	349.20					
L339	43 804.32	2	647	604.04	L358	39 761.62	2	650	041.60
L340	43 699.53	2	647	675.85	L359	39 684.13	2	650	082.69
L341	43 481.56	2	647	825.23	L360	39 669.27	2	650	090.52
L342	43 191.51	2	648	023.32	L361	39 656.31	2	650	098.69
L343	42 597.62	2	648	428.74					
L344	42 485.33	2	648	481.44					
L345	42 170.34	2	648	598.83					
L346	41 738.64	2	648	759.51					
L347	41 422.12	2	648	876.63					
L348	41 335.26	2	648	919.52					
L349	40 976.98	2	649	172.14					
L350	40 620.70	2	649	426.41					
L351	40 302.63	2	649	652.30					
L352	40 002.96	2	649	866.27					
L353	39 959.43	2	649	897.35					
L354	39 914.33	2	649	929.55					
L355	39 821.29	2	649	996.19					
L356	39 786.21	2	650	020.50					
L357	39 776.23	2	650	033.86					
					Vel Sheet 22 Van of 22 P1176/19				