

---

GOVERNMENT NOTICES • GOEWERMENTSKENNISGEWINGS

---

DEPARTMENT OF TRANSPORT

NO. 6420

11 July 2025

**THE SOUTH AFRICAN NATIONAL ROADS  
AGENCY SOC LIMITED**

Registration No: 1998/009584/30

---

**DECLARATION AMENDMENT OF NATIONAL ROAD R27 SECTION 11**

AMENDMENT OF DECLARATION No. 297 OF 2018.

By virtue of Section 40(1)(b) of The South African National Roads Agency Limited and National Roads Act, 1998 (Act No. 7 of 1998), I hereby amend Declaration No. 297 of 2018 by substituting it in its entirety, with the accompanying sheets 1 to 21 of Plan No. P1186/19.

**(National Road R27 Section 11: Kenhardt – Keimoes)**

  
MINISTER OF TRANSPORT

DEPARTEMENT VAN VERVOER

NO. 6420

11 Julie 2025

**DIE SUID-AFRIKAANSE NASIONALE  
PADAGENTSKAP MSB BEPERK**

Registrasie No: 1998/009584/30

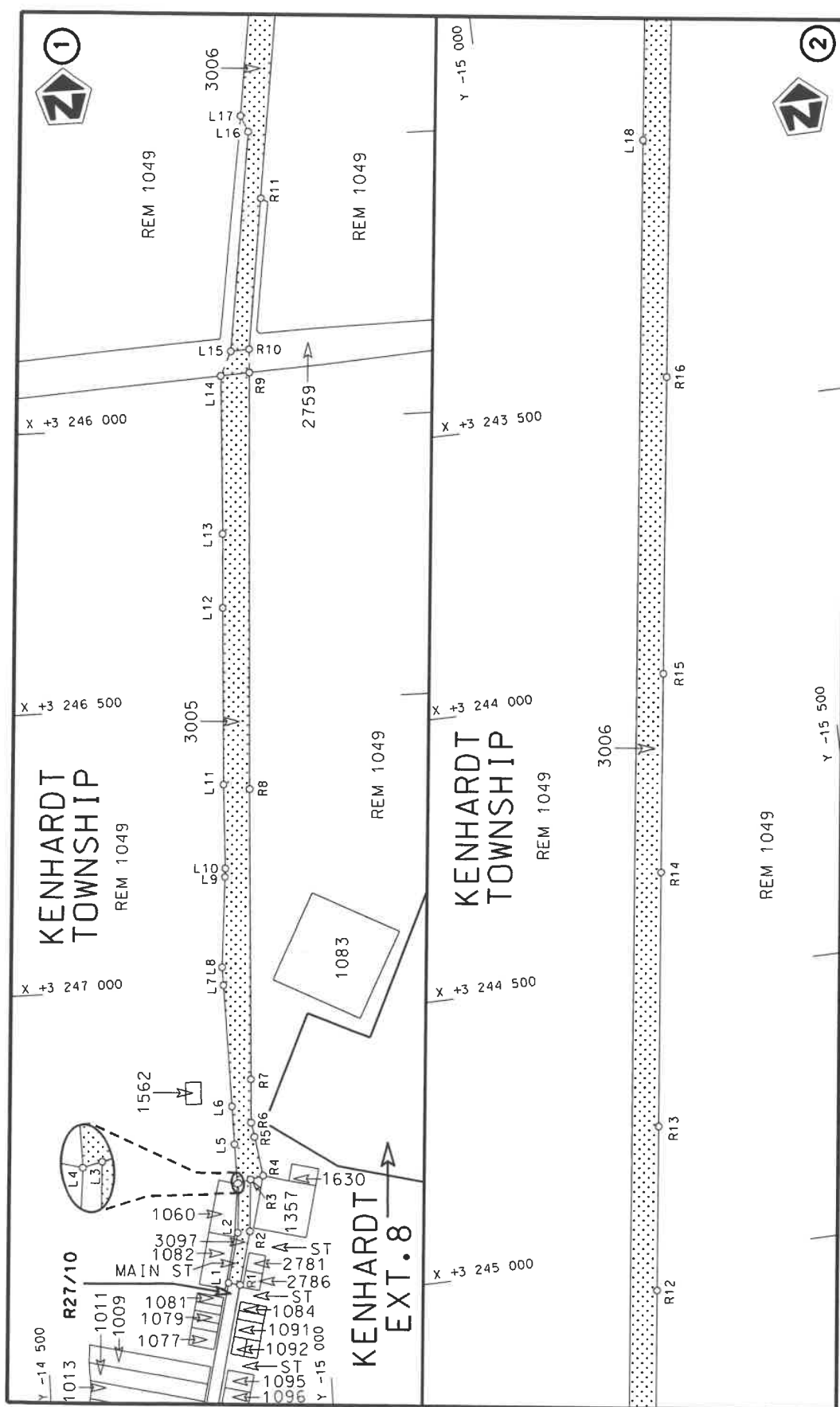
**VERKLARING WYSIGING VAN NASIONALE PAD R27 SEKSIE 11**

WYSIGING VAN VERKLARING No. 297 VAN 2018.

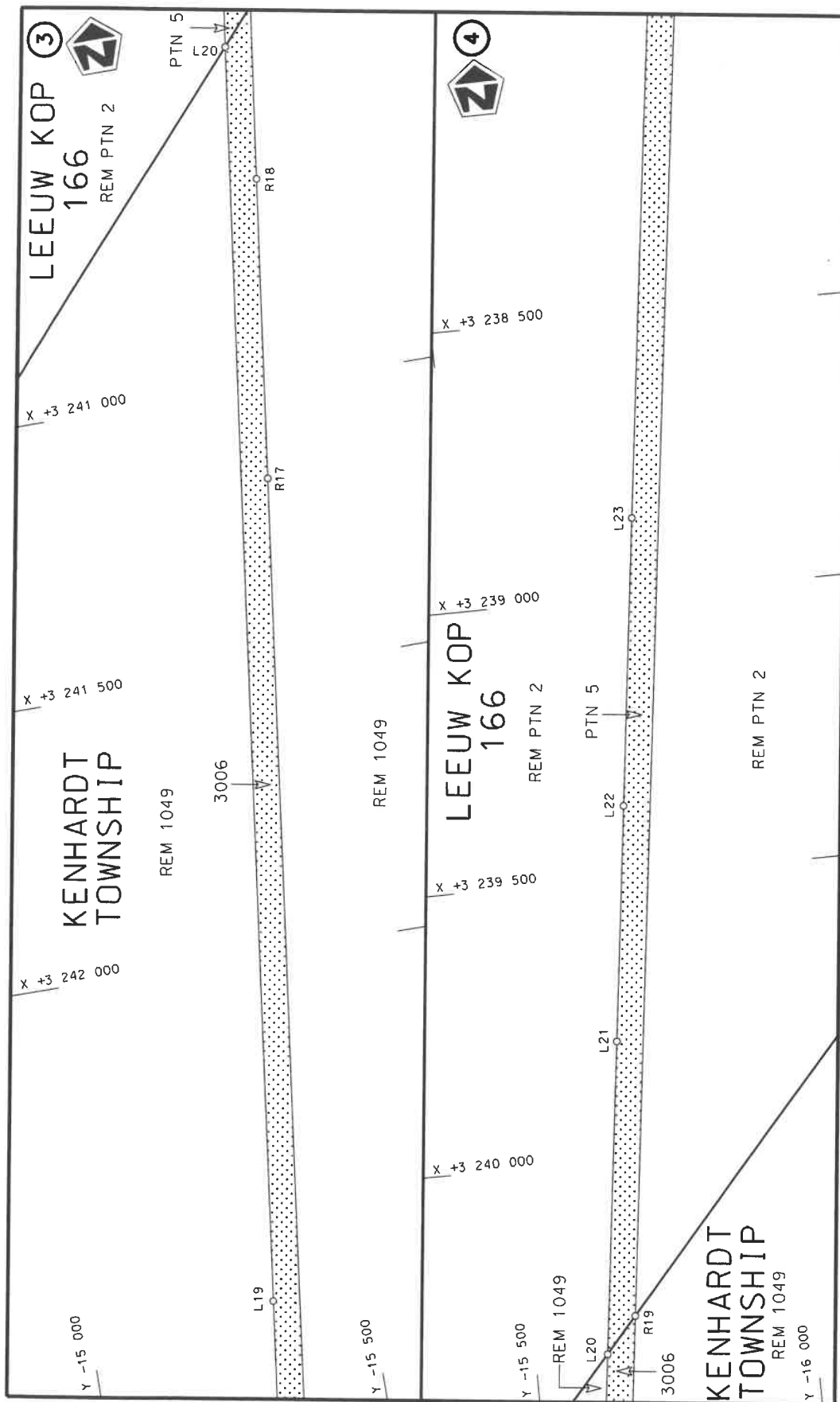
Kragtens Artikel 40(1)(b) van die Wet op die Suid-Afrikaanse Nasionale Padagentskap Beperk en op Nasionale Paaie, Wet 1998 (Wet No. 7 van 1998), wysig ek hiermee Verklaring No. 297 van 2018 deur dit in sy geheel te vervang, met bygaande velle 1 tot 21 van Plan No. P1186/19.

**(Nasionale Pad R27 Seksie 11: Kenhardt – Keimoes)**

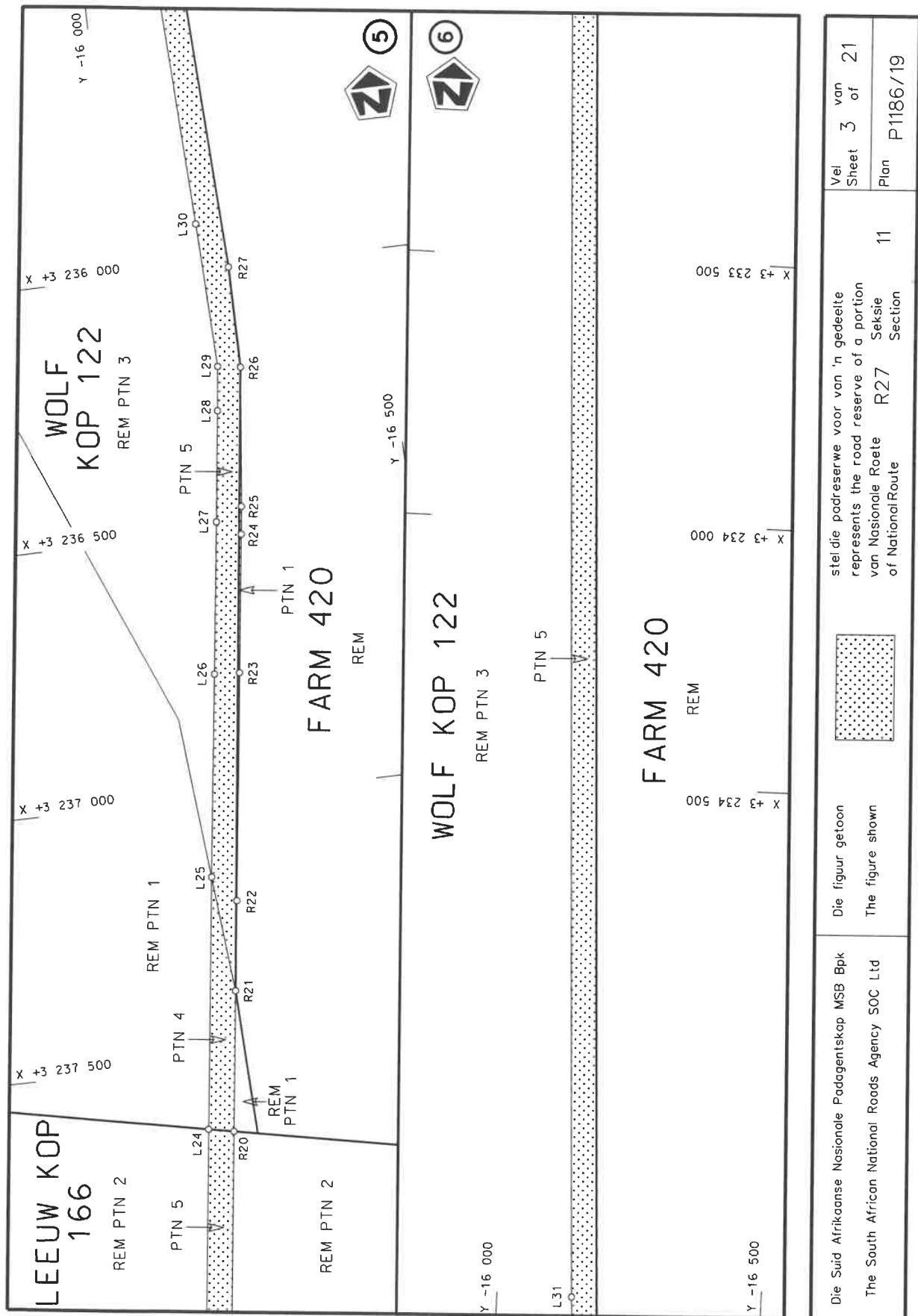
  
**MINISTER VAN VERVOER**

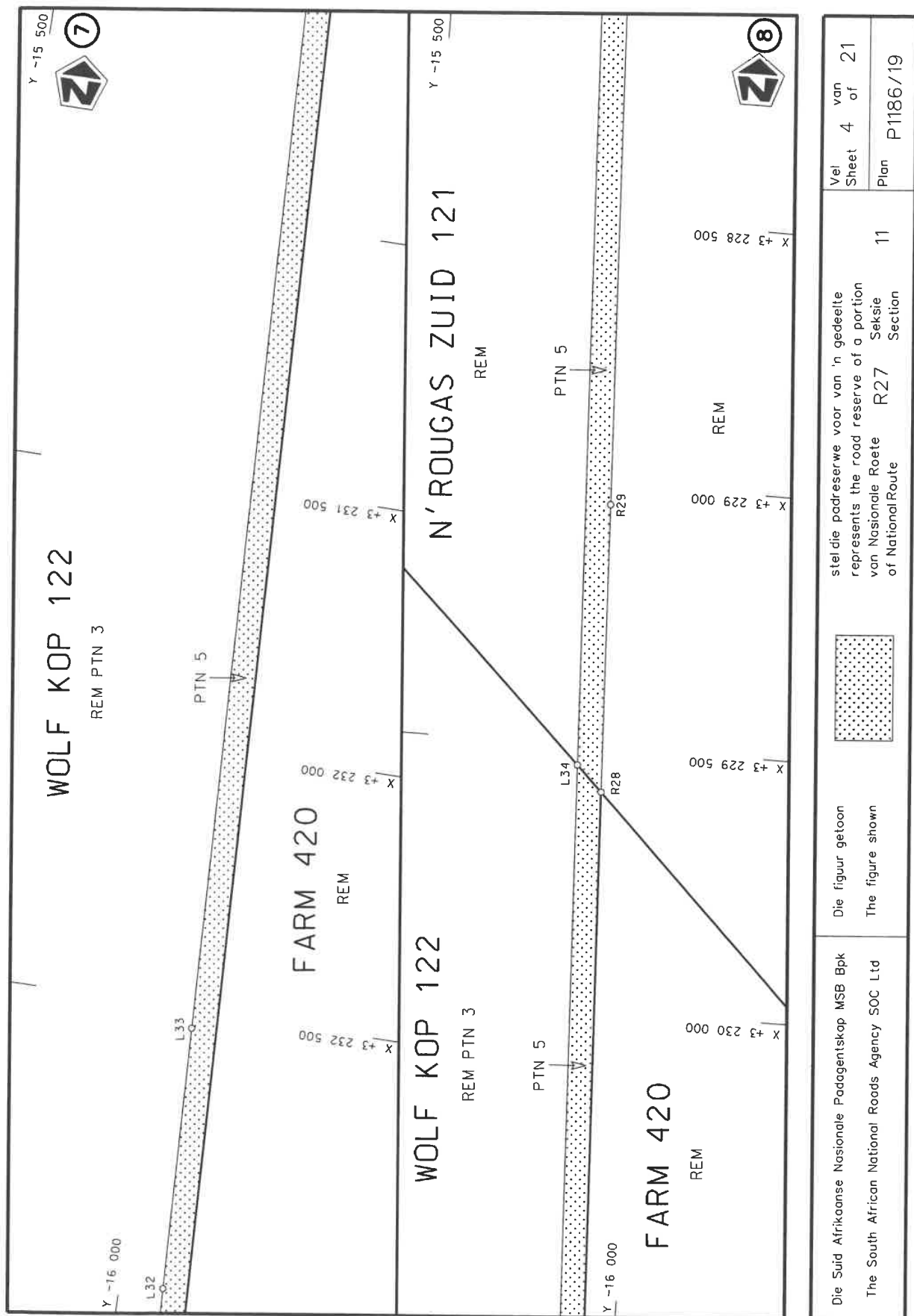


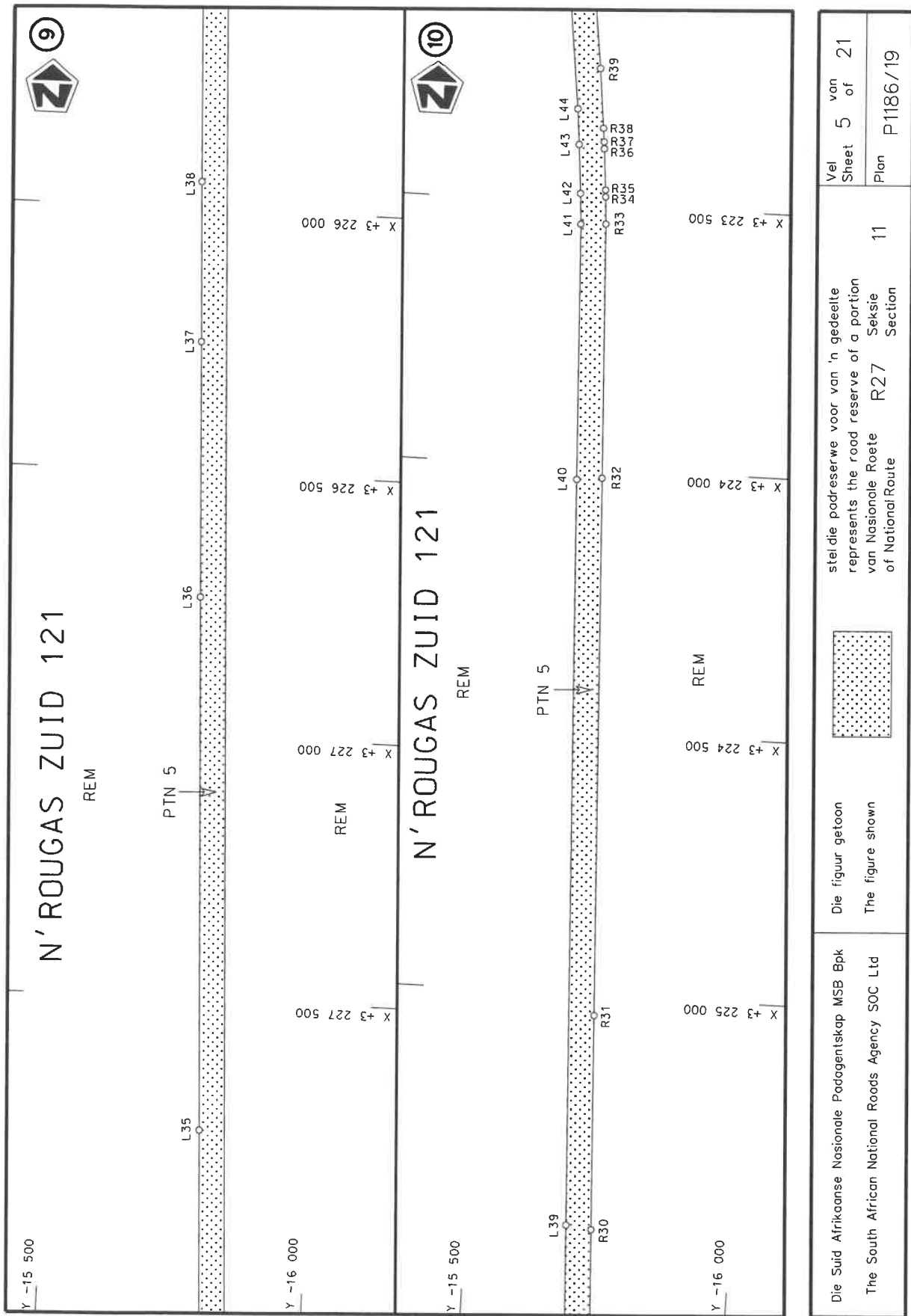
Die Suid Afrikaanse Nasionale Padagentskap MSB Bpk	Die figuur getoon		steldie padreserwe voor van 'n gedeelte represents the road reserve of a portion	Vel Sheet	1 of	2 1
The South African National Roads Agency SOC Ltd	The figure shown		van Nasionale Roete of NationalRoute	R27	11	Plan

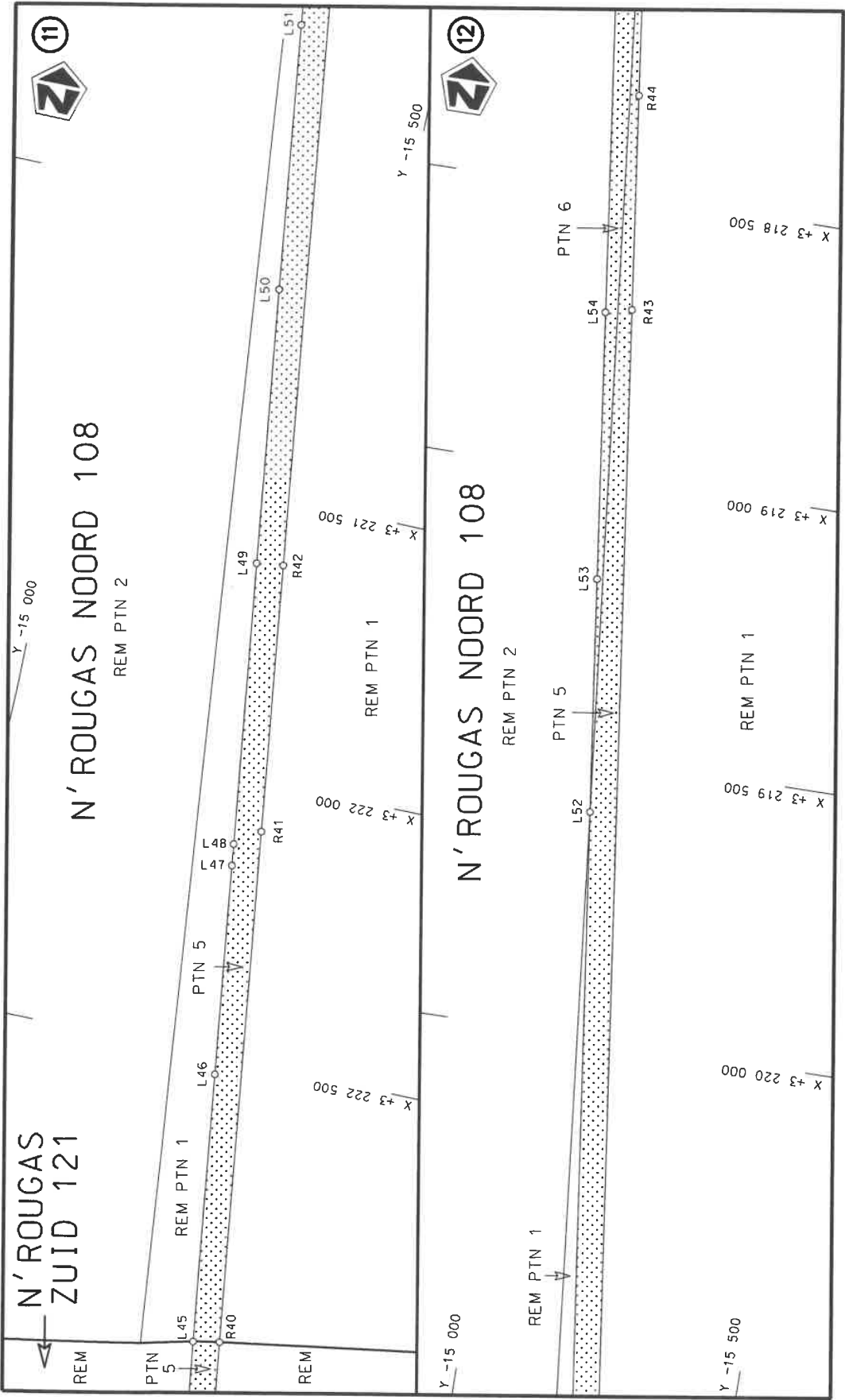


Die Suid Afrikaanse Nasionale Padagentskop MSB Bpk The South African National Roads Agency SOC Ltd	Die figuur getoon The figure shown	steldie padreserwe voor van 'n gedeelte represents the road reserve of a portion van Nasionale Roete R27 Sektie of National Route Section	Vel Sheet 2 of 21 Plan P1186/19
---	---------------------------------------	--	--



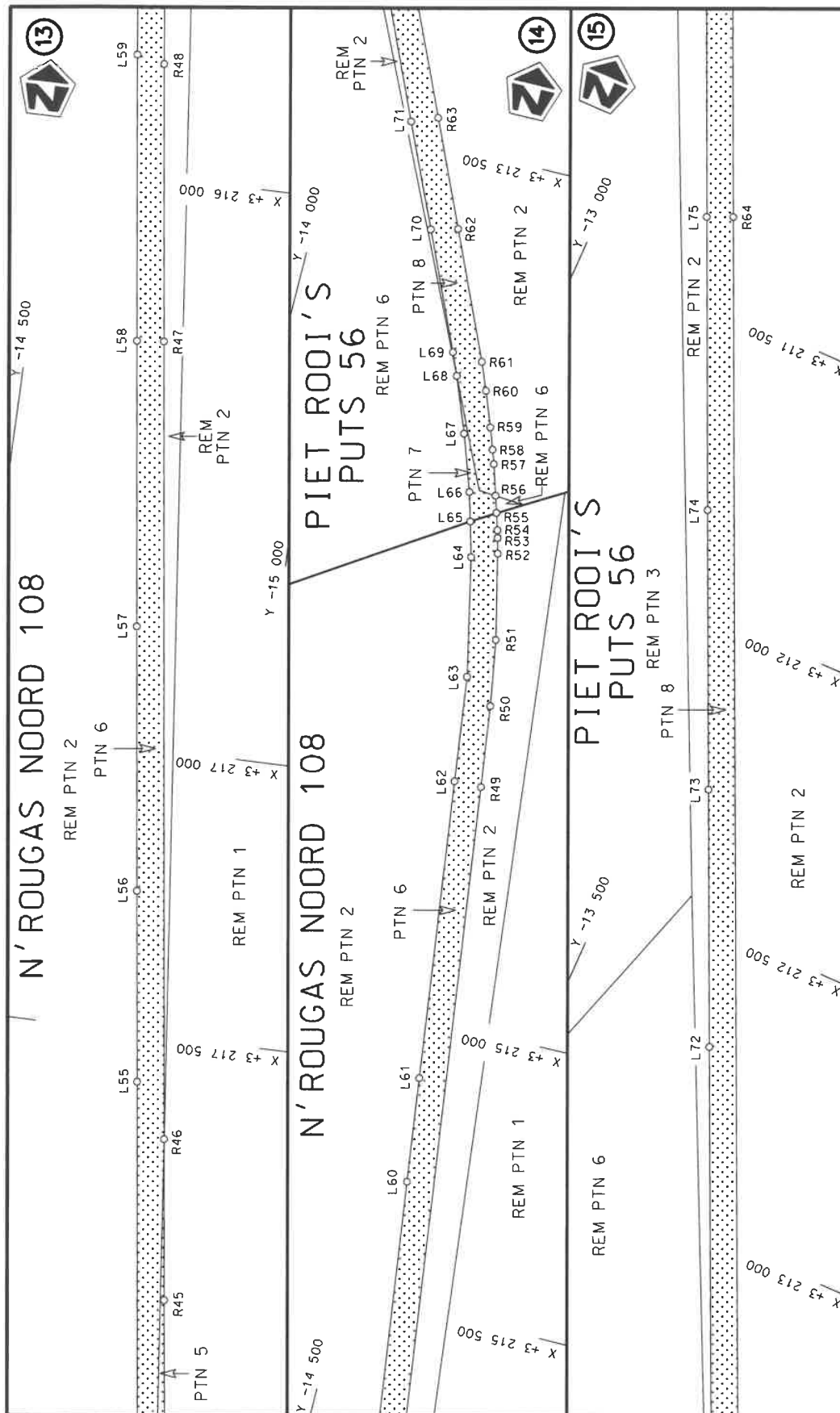






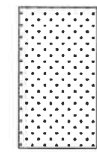
Die Suid Afrikaanse Nasionale Padagentskop MSB Bpk The South African National Roads Agency SOC Ltd	Die figuur getoon The figure shown	steldie padreserwe voor van 'n gedeelte represents the road reserve of a portion van Nasionale Roete R27 of National Route	11	Vel Sheet 6 of 21	Plan P1186/19
---	---------------------------------------	---	----	----------------------	------------------





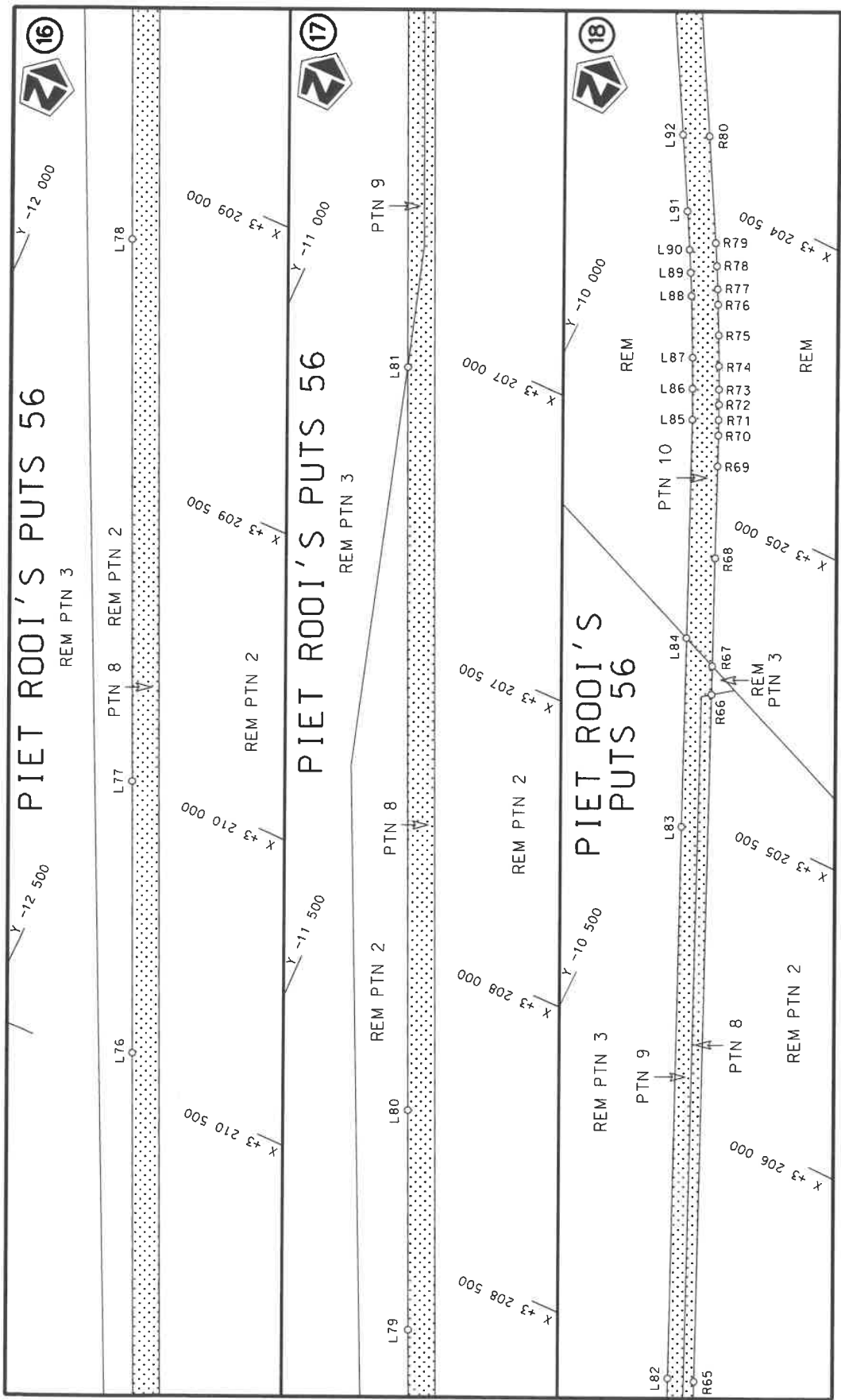
Die Suid Afrikaanse Nasionale Padagentskap MSB Bpk  
The South African National Roads Agency SOC Ltd


Die figuur getoon  
The figure shown

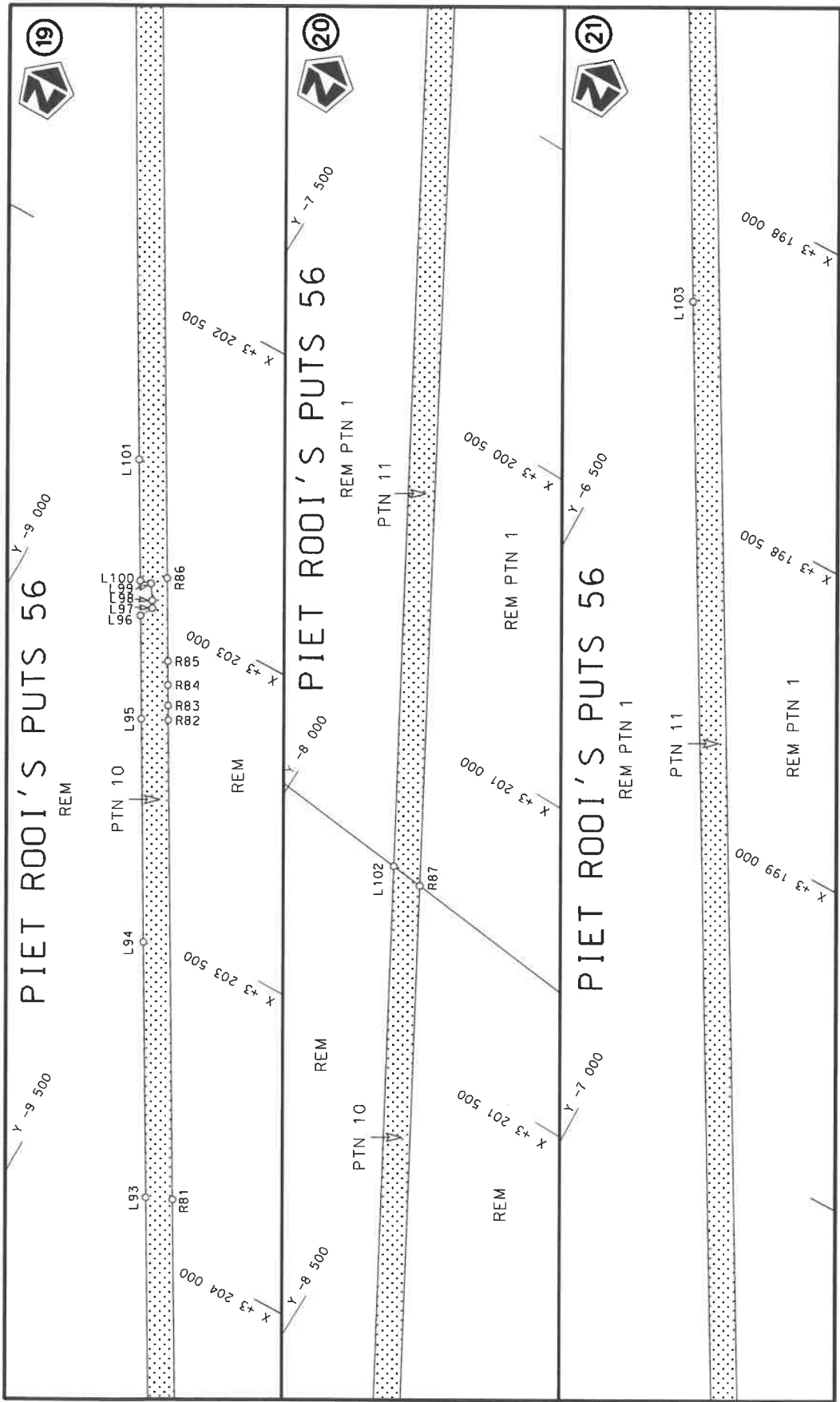


stel die padreserwe voor van 'n gedeelte  
represents the road reserve of a portion  
van Nasionale Roete R27 Seksie  
of National Route Section

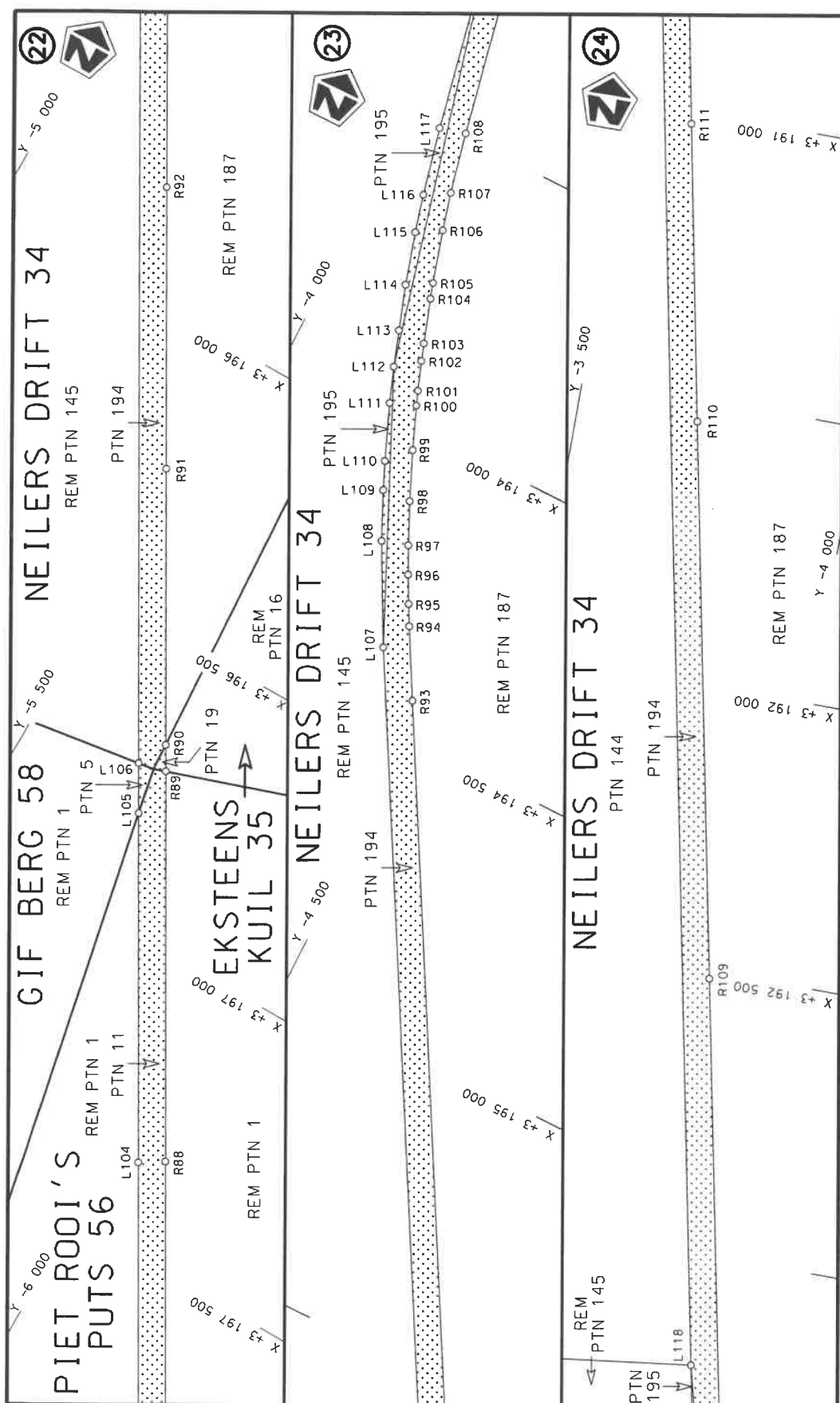
Vel  
Sheet 7 of 21  
Plan P1186/19



Die Suid Afrikaanse Nasionale Padogentskop MSB Bpk The South African National Roads Agency SOC Ltd	Die figuur getoon The figure shown		stel die padreserwe voor van 'n gedeelte represents the road reserve of a portion van Nasionale Roete R27 Seksie 11 of National Route	Vel Sheet	van 8	of 21
				Plan	P1186/19	



Die Suid Afrikaanse Nasionale Padogentskap MSB Bpk The South African National Roads Agency SOC Ltd	Die figuur getoon The figure shown	stel die padreserwe voor van 'n gedeelte represents the road reserve of a portion van Nasionale Roete R27 of National Route	11 Seksie Section	Vel Sheet 9 of 21 Plan P1186/19
---	---------------------------------------	--	-------------------------	---

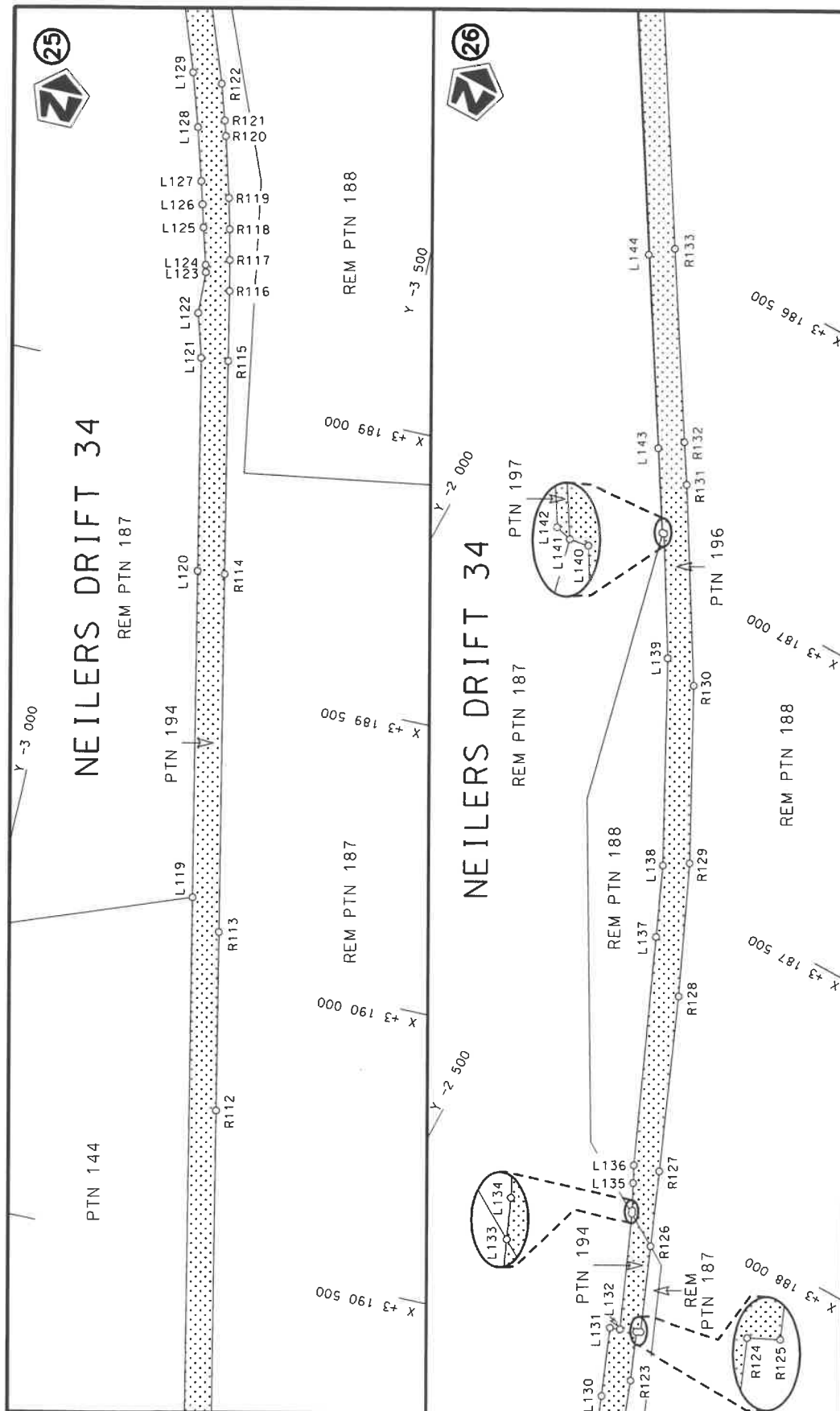


Die Suid Afrikaanse Nasionale Podagentskap MSB Bpk  
The South African National Roads Agency SOC Ltd

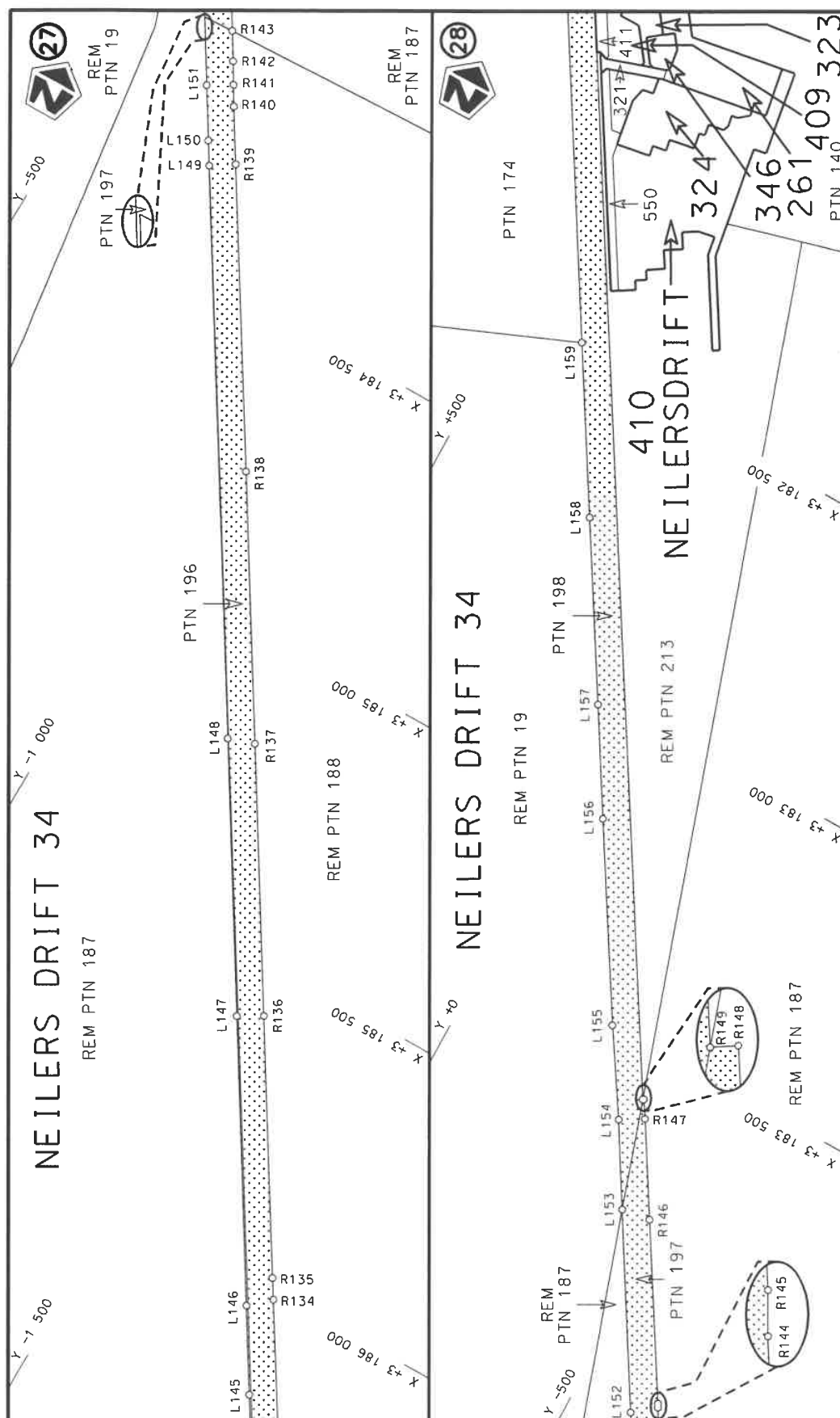
Die figuur getoon  
The figure shown


steldie padreserwe voor van 'n gedeelte  
represents the road reserve of a portion  
van Nasionale Roete R27 Sektie  
of National Route Section

Vel van 21  
Sheet 10 of  
Plan P1186/19

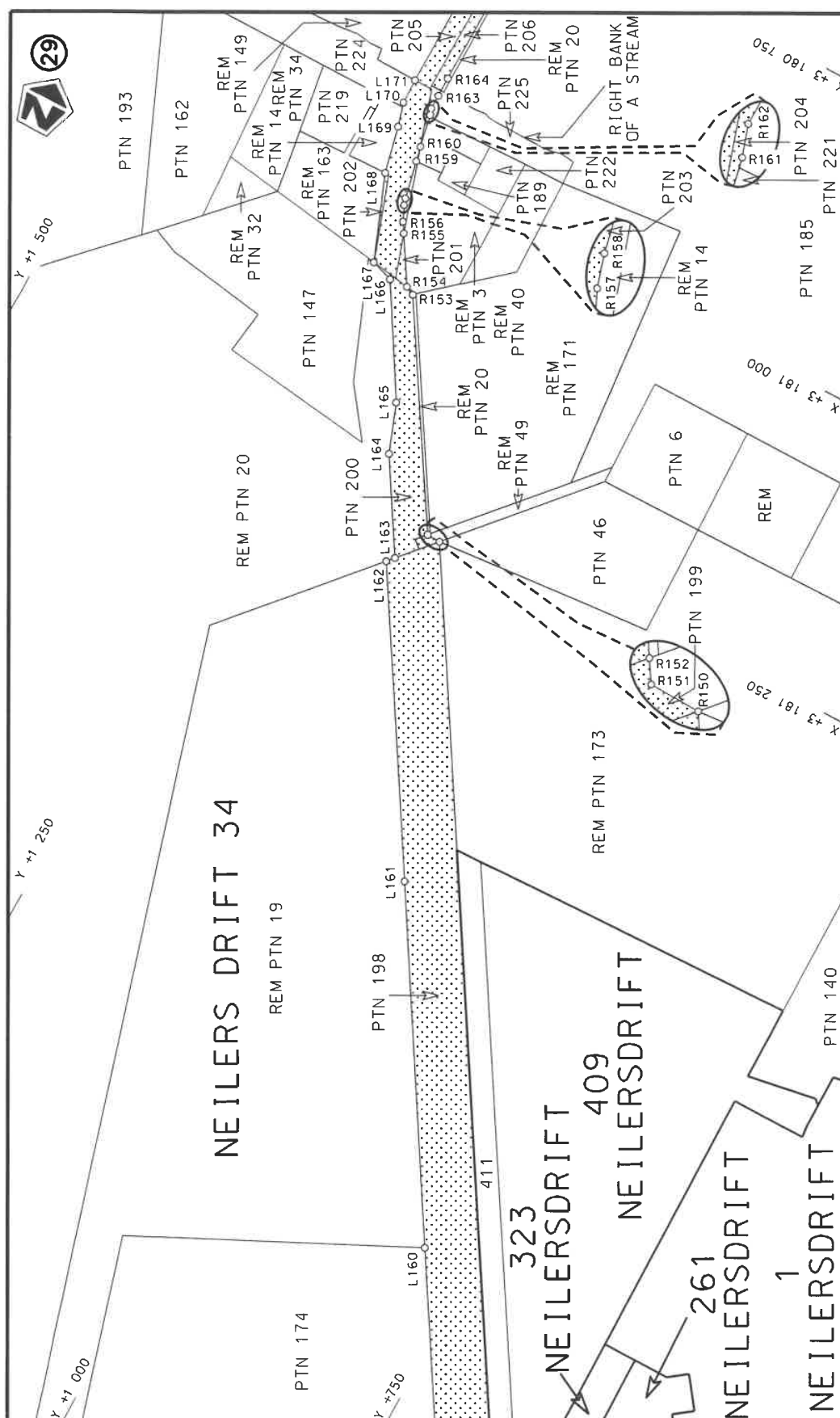



Die Suid Afrikaanse Nasionale Padagentskap MSB Bpk The South African National Roads Agency SOC Ltd	Die figuur getoon The figure shown	<div data-bbox="1300 1093 1380 1243" data-label="Image"> </div>	<div data-bbox="1284 622 1396 1025" data-label="Text"> <p>stel die padreserwe voor van 'n gedeelte represents the road reserve of a portion van Nasionale Roete R27 of National Route</p> </div>	<div data-bbox="1284 309 1396 510" data-label="Text"> <p>Vel Sheet 11 of 21</p> <p>Plan P1186/19</p> </div>
---	---------------------------------------	---	--	---



Die Suid Afrikaanse Nasionale Padagentskap MSB Bpk The South African National Roads Agency SOC Ltd	Die figuur getoon The figure shown		steldie padreserwe voor van 'n gedeelte represents the road reserve of a portion van Nasionale Roete of National Route	11	Vel Sheet 12 of 21 Plan P1186/19
---	---------------------------------------	--	---	----	--

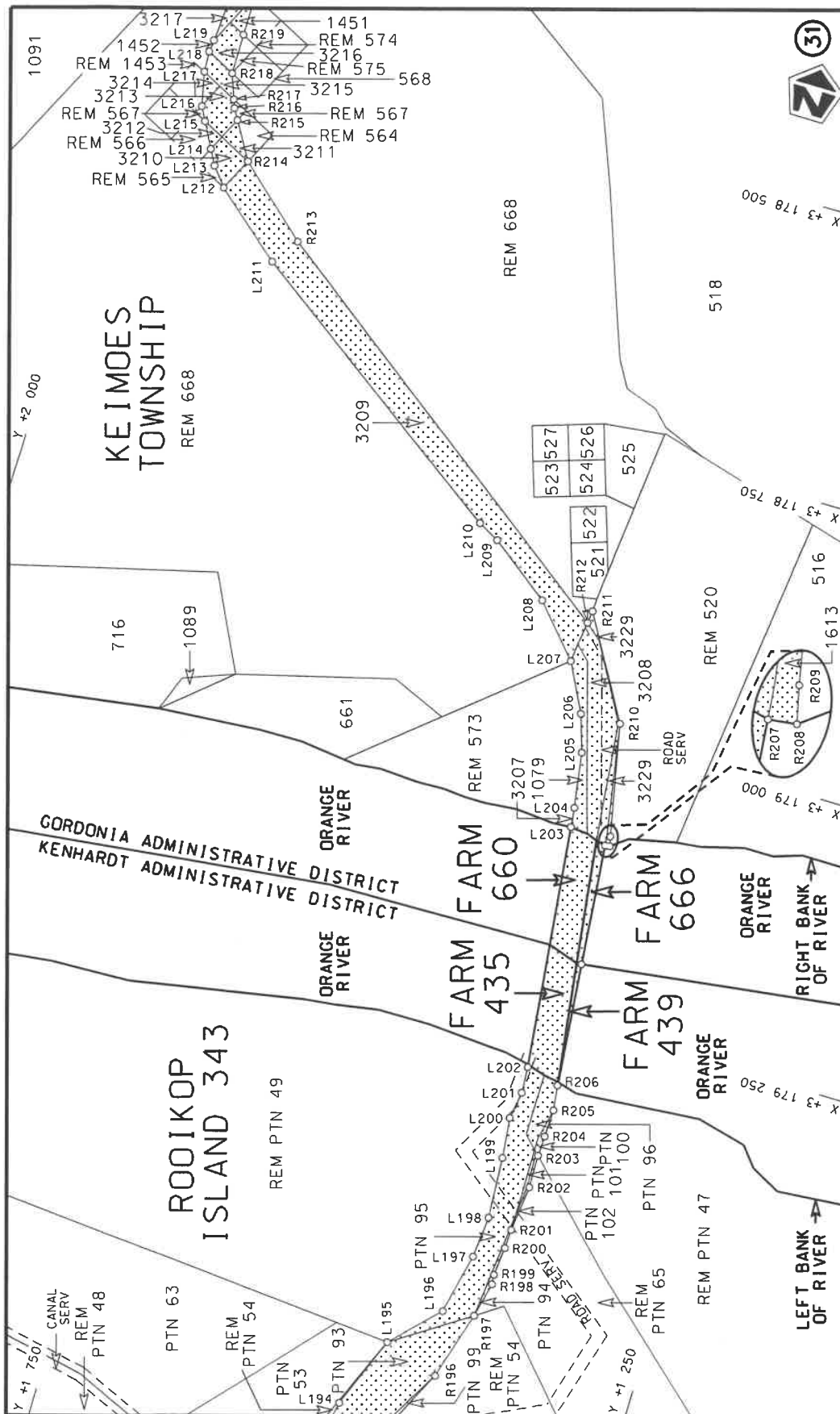


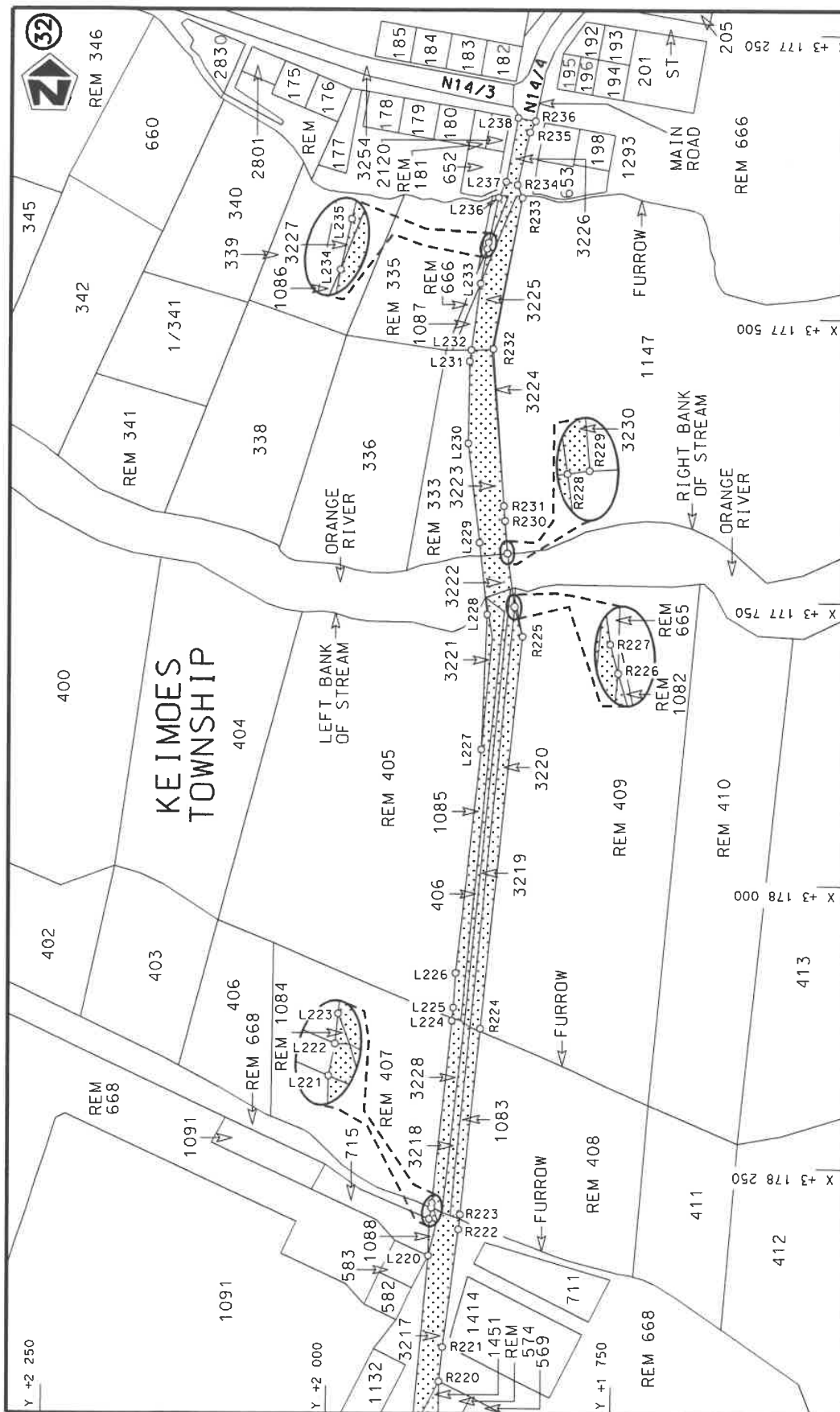


Die Suid Afrikaanse Nasionale Padagentskap MSB Bpk The South African National Roads Agency SOC Ltd	Die figuur getoon The figure shown		stelt die padreserwe voor van 'n gedeelte represents the road reserve of a portion van Nasionale Roete of National Route	11	Vel Sheet 13 of 21
					Plan P1186/19









Die Suid Afrikaanse Nasionale Padagentskap MSB Bpk  
The South African National Roads Agency SOC Ltd

Die figuur getoon  
The figure shown



stel die padreserwe voor van 'n gedeelte  
represents the road reserve of a portion  
van Nasionale Roete  
of National Route

R27  
Seksie  
Section

Vel  
Sheet  
16 of 21  
Plan  
P1186/19

PADRESERWE KOÖRDINATE / ROAD RESERVE CO-ORDINATES									
LINKERKANT/LEFT HAND SIDE					REGTERKANT/RIGHT HAND SIDE				
	Y	X	WG 21°		Y	X			
L1	-14 827.20	3 247 531.94		R1	-14 847.61	3 247 536.89			
L2	-14 848.70	3 247 443.55		R2	-14 870.61	3 247 442.01			
L3	-14 855.13	3 247 355.23		R3	-14 876.58	3 247 349.80			
L4	-14 852.37	3 247 355.93		R4	-14 899.44	3 247 344.00			
L5	-14 851.56	3 247 285.41		R5	-14 887.51	3 247 274.06			
L6	-14 850.55	3 247 217.40		R6	-14 883.24	3 247 248.54			
L7	-14 846.95	3 247 000.63		R7	-14 887.12	3 247 170.96			
L8	-14 846.42	3 246 968.55		R8	-14 913.42	3 246 653.39			
L9	-14 860.17	3 246 807.71		R9	-14 953.15	3 245 912.11			
L10	-14 861.88	3 246 792.68		R10	-14 954.77	3 245 870.38			
L11	-14 866.71	3 246 642.83		R11	-14 989.95	3 245 603.31			
L12	-14 882.60	3 246 328.29		R12	-15 061.02	3 245 059.23			
L13	-14 889.46	3 246 196.36		R13	-15 099.15	3 244 768.68			
L14	-14 901.37	3 245 915.11		R14	-15 157.51	3 244 318.75			
L15	-14 922.10	3 245 872.37		R15	-15 203.55	3 243 967.19			
L16	-14 974.00	3 245 483.62		R16	-15 271.75	3 243 442.81			
L17	-14 961.79	3 245 454.71		R17	-15 575.57	3 241 116.98			
L18	-15 279.56	3 243 018.76		R18	-15 644.67	3 240 586.85			
L19	-15 338.57	3 242 567.93		R19	-15 684.40	3 240 282.65			
L20	-15 628.50	3 240 345.84		R20	-16 029.58	3 237 637.54			
L21	-15 701.23	3 239 790.97		R21	-16 064.05	3 237 371.96			
L22	-15 755.45	3 239 373.12		R22	-16 086.58	3 237 201.48			
L23	-15 821.83	3 238 863.36		R23	-16 142.77	3 236 770.97			
L24	-15 982.37	3 237 627.90		R24	-16 176.94	3 236 509.58			
L25	-16 044.70	3 237 151.35		R25	-16 183.52	3 236 457.07			
L26	-16 095.38	3 236 768.07		R26	-16 212.72	3 236 193.87			
L27	-16 132.94	3 236 481.02		R27	-16 212.11	3 236 002.30			
L28	-16 159.79	3 236 271.26		R28	-15 922.98	3 229 585.50			
L29	-16 170.12	3 236 187.66		R29	-15 898.95	3 229 038.91			
L30	-16 160.13	3 235 913.51		R30	-15 737.58	3 225 445.69			
L31	-16 141.02	3 235 477.29		R31	-15 719.21	3 225 038.51			
L32	-16 031.33	3 233 033.33		R32	-15 673.41	3 224 018.39			
L33	-16 008.72	3 232 534.83		R33	-15 651.32	3 223 537.05			
L34	-15 874.17	3 229 537.17		R34	-15 647.57	3 223 485.60			
L35	-15 793.78	3 227 748.21		R35	-15 646.52	3 223 472.50			
L36	-15 748.14	3 226 736.05		R36	-15 639.68	3 223 394.73			
L37	-15 726.44	3 226 252.05		R37	-15 638.45	3 223 381.80			
L38	-15 712.76	3 225 949.19		R38	-15 635.76	3 223 355.80			
L39	-15 690.01	3 225 439.69		R39	-15 623.13	3 223 243.38			
L40	-15 626.30	3 224 023.82		R40	-15 592.03	3 222 998.59			
L41	-15 604.18	3 223 539.80		R41	-15 476.74	3 222 088.82			
L42	-15 600.09	3 223 481.77		R42	-15 416.78	3 221 615.31			
L43	-15 591.92	3 223 389.37		R43	-15 046.74	3 218 700.62			
L44	-15 585.31	3 223 322.01		R44	-14 998.74	3 218 321.34			
L45	-15 545.67	3 223 007.06		R45	-14 952.93	3 217 961.82			
L46	-15 485.24	3 222 530.79		R46	-14 917.23	3 217 680.12			
L47	-15 437.92	3 222 159.04		R47	-14 740.48	3 216 286.90			
L48	-15 433.20	3 222 120.59		R48	-14 678.94	3 215 802.94			
L49	-15 369.57	3 221 621.20		R49	-14 523.95	3 214 581.02			
L50	-15 307.84	3 221 134.44		R50	-14 505.67	3 214 438.42			
L51	-15 248.46	3 220 664.91		R51	-14 486.84	3 214 323.13			
					Vel Sheet	17	Van of	21	P1186/19

PADRESERVE KOÖRDINATE / ROAD RESERVE CO-ORDINATES									
LINKERKANT/LEFT HAND SIDE					REGTERKANT/RIGHT HAND SIDE				
	Y	X	WG 21°			Y	X		
L52	-15 113.06	3 219 598.47			R52	-14 453.47	3 214 174.87		
L53	-15 060.58	3 219 185.21			R53	-14 446.70	3 214 148.28		
L54	-15 000.67	3 218 712.33			R54	-14 443.07	3 214 135.10		
L55	-14 857.75	3 217 585.42			R55	-14 434.07	3 214 105.99		
L56	-14 815.26	3 217 252.04			R56	-14 425.33	3 214 076.93		
L57	-14 756.67	3 216 790.04			R57	-14 408.81	3 214 023.58		
L58	-14 693.35	3 216 291.60			R58	-14 400.58	3 213 999.50		
L59	-14 630.17	3 215 792.81			R59	-14 387.42	3 213 962.60		
L60	-14 565.98	3 215 287.40			R60	-14 364.36	3 213 901.99		
L61	-14 542.81	3 215 104.91			R61	-14 344.87	3 213 854.14		
L62	-14 476.57	3 214 582.02			R62	-14 247.83	3 213 637.51		
L63	-14 453.50	3 214 398.29			R63	-14 166.59	3 213 456.56		
L64	-14 409.88	3 214 192.28			R64	-13 216.78	3 211 345.45		
L65	-14 393.11	3 214 131.60			R65	-11 006.69	3 206 434.32		
L66	-14 378.96	3 214 081.77			R66	-10 502.08	3 205 312.66		
L67	-14 345.12	3 213 984.39			R67	-10 481.12	3 205 266.12		
L68	-14 308.08	3 213 888.92			R68	-10 402.01	3 205 090.37		
L69	-14 291.54	3 213 850.15			R69	-10 334.63	3 204 940.46		
L70	-14 201.53	3 213 649.70			R70	-10 311.95	3 204 890.26		
L71	-14 122.55	3 213 474.20			R71	-10 300.50	3 204 865.26		
L72	-13 772.90	3 212 696.82			R72	-10 288.93	3 204 840.34		
L73	-13 587.05	3 212 283.28			R73	-10 277.38	3 204 815.88		
L74	-13 385.13	3 211 834.31			R74	-10 259.19	3 204 778.08		
L75	-13 173.50	3 211 364.41			R75	-10 234.93	3 204 729.00		
L76	-12 765.84	3 210 458.73			R76	-10 209.95	3 204 680.12		
L77	-12 566.67	3 210 015.75			R77	-10 197.40	3 204 655.63		
L78	-12 169.22	3 209 133.08			R78	-10 178.10	3 204 619.30		
L79	-11 946.53	3 208 637.70			R79	-10 158.47	3 204 583.10		
L80	-11 785.12	3 208 279.24			R80	-10 065.54	3 204 416.35		
L81	-11 240.02	3 207 067.71			R81	-9 783.61	3 203 913.58		
L82	-10 961.92	3 206 449.59			R82	-9 366.28	3 203 168.63		
L83	-10 556.36	3 205 548.67			R83	-9 353.49	3 203 146.06		
L84	-10 418.04	3 205 241.01			R84	-9 335.65	3 203 114.23		
L85	-10 257.86	3 204 884.79			R85	-9 315.24	3 203 077.25		
L86	-10 234.23	3 204 835.08			R86	-9 242.92	3 202 948.08		
L87	-10 210.16	3 204 785.28			R87	-8 290.32	3 201 247.65		
L88	-10 160.44	3 204 686.77			R88	-6 091.56	3 197 322.87		
L89	-10 141.13	3 204 650.09			R89	-5 751.93	3 196 716.26		
L90	-10 121.39	3 204 613.84			R90	-5 728.72	3 196 675.29		
L91	-10 088.15	3 204 553.80			R91	-5 488.73	3 196 246.29		
L92	-10 021.39	3 204 434.14			R92	-5 243.94	3 195 809.85		
L93	-9 740.26	3 203 932.78			R93	-4 474.60	3 194 436.50		
L94	-9 517.91	3 203 535.87			R94	-4 409.89	3 194 320.54		
L95	-9 323.70	3 203 189.45			R95	-4 391.17	3 194 285.53		
L96	-9 233.95	3 203 029.13			R96	-4 366.93	3 194 239.20		
L97	-9 246.03	3 203 007.49			R97	-4 343.96	3 194 192.40		
L98	-9 239.05	3 202 995.66			R98	-4 310.71	3 194 121.28		
L99	-9 222.88	3 202 970.09			R99	-4 274.38	3 194 037.77		
L100	-9 203.93	3 202 974.99			R100	-4 244.77	3 193 964.03		
L101	-9 098.45	3 202 786.91			R101	-4 235.27	3 193 939.36		
L102	-8 232.73	3 201 241.76			R102	-4 217.11	3 193 889.35		
					<div> <div>Vel Sheet</div> <div>18</div> <div>Van of</div> <div>21</div> <div>P1186/19</div> </div>				



PADRESERVE KOÖRDINATE / ROAD RESERVE CO-ORDINATES									
LINKERKANT/LEFT HAND SIDE					REGTERKANT/RIGHT HAND SIDE				
	Y	X	WG 21°			Y	X		
L103	-6 519.71	3 198 183.63			R103	-4 206.94	3 193 859.63		
L104	-6 051.00	3 197 347.37			R104	-4 181.53	3 193 783.36		
L105	-5 746.86	3 196 804.40			R105	-4 172.91	3 193 756.42		
L106	-5 703.45	3 196 726.95			R106	-4 146.26	3 193 665.01		
L107	-4 385.96	3 194 374.41			R107	-4 129.08	3 193 599.22		
L108	-4 298.22	3 194 206.62			R108	-4 104.97	3 193 493.04		
L109	-4 259.98	3 194 124.46			R109	-3 908.28	3 192 513.47		
L110	-4 239.46	3 194 076.86			R110	-3 713.19	3 191 540.54		
L111	-4 200.54	3 193 981.07			R111	-3 608.89	3 191 021.76		
L112	-4 177.75	3 193 920.10			R112	-3 452.92	3 190 244.79		
L113	-4 156.93	3 193 858.50			R113	-3 390.71	3 189 935.50		
L114	-4 131.00	3 193 780.83			R114	-3 266.50	3 189 315.79		
L115	-4 104.28	3 193 689.74			R115	-3 192.54	3 188 947.11		
L116	-4 087.02	3 193 624.13			R116	-3 168.40	3 188 826.13		
L117	-4 059.41	3 193 505.21			R117	-3 157.35	3 188 772.67		
L118	-3 997.13	3 193 197.78			R118	-3 145.45	3 188 719.63		
L119	-3 332.65	3 189 885.00			R119	-3 132.55	3 188 666.28		
L120	-3 219.20	3 189 320.33			R120	-3 103.90	3 188 560.83		
L121	-3 144.94	3 188 951.56			R121	-3 096.11	3 188 534.40		
L122	-3 123.25	3 188 875.47			R122	-3 076.88	3 188 472.36		
L123	-3 121.02	3 188 802.42			R123	-3 016.97	3 188 304.09		
L124	-3 117.70	3 188 789.58			R124	-2 985.10	3 188 223.24		
L125	-3 100.12	3 188 726.38			R125	-2 991.71	3 188 220.08		
L126	-3 089.71	3 188 686.87			R126	-2 934.95	3 188 078.39		
L127	-3 078.93	3 188 647.34			R127	-2 885.28	3 187 954.41		
L128	-3 052.99	3 188 555.53			R128	-2 767.50	3 187 666.57		
L129	-3 023.92	3 188 463.27			R129	-2 672.46	3 187 450.51		
L130	-2 985.15	3 188 352.96			R130	-2 528.86	3 187 171.57		
L131	-2 940.49	3 188 239.62			R131	-2 348.49	3 186 866.22		
L132	-2 957.36	3 188 233.35			R132	-2 308.91	3 186 802.15		
L133	-2 878.43	3 188 043.52			R133	-2 130.85	3 186 510.90		
L134	-2 876.38	3 188 038.60			R134	-1 819.94	3 185 997.80		
L135	-2 854.50	3 187 994.96			R135	-1 800.01	3 185 965.15		
L136	-2 840.54	3 187 966.56			R136	-1 561.06	3 185 569.97		
L137	-2 682.31	3 187 593.50			R137	-1 313.20	3 185 160.20		
L138	-2 632.54	3 187 476.55			R138	-1 065.47	3 184 750.57		
L139	-2 465.27	3 187 150.99			R139	-784.84	3 184 289.38		
L140	-2 354.61	3 186 960.92			R140	-732.11	3 184 202.49		
L141	-2 351.71	3 186 961.40			R141	-713.27	3 184 169.81		
L142	-2 351.31	3 186 961.29			R142	-692.27	3 184 134.12		
L143	-2 273.51	3 186 833.51			R143	-665.02	3 184 088.49		
L144	-2 095.55	3 186 541.94			R144	-642.16	3 184 050.24		
L145	-1 865.28	3 186 164.44			R145	-638.77	3 184 044.03		
L146	-1 783.97	3 186 029.76			R146	-470.24	3 183 766.61		
L147	-1 520.03	3 185 593.50			R147	-378.02	3 183 614.55		
L148	-1 267.15	3 185 175.28			R148	-360.04	3 183 585.44		
L149	-745.80	3 184 314.04			R149	-358.28	3 183 586.53		
L150	-722.91	3 184 276.50			R150	1 051.80	3 181 264.34		
L151	-672.57	3 184 193.03			R151	1 063.69	3 181 263.98		
L152	-604.71	3 184 080.65			R152	1 063.91	3 181 263.63		
L153	-420.15	3 183 773.92			R153	1 174.69	3 181 084.00		
					Vel 19 Van 21 of P1186/19 Sheet				

PADRESERWE KOÖRDINATE / ROAD RESERVE CO-ORDINATES						
LINKERKANT/LEFT HAND SIDE				REGTERKANT/RIGHT HAND SIDE		
	Y	X	WG 21°		Y	X
L154	-338.72	3 183	637.87	R154	1 182.46	3 181 080.23
L155	-249.12	3 183	497.49	R155	1 207.01	3 181 040.20
L156	-60.09	3 183	186.66	R156	1 212.60	3 181 031.33
L157	44.14	3 183	014.88	R157	1 218.56	3 181 018.22
L158	215.08	3 182	733.59	R158	1 220.26	3 181 012.44
L159	374.93	3 182	470.80	R159	1 227.34	3 180 979.09
L160	770.74	3 181	818.52	R160	1 230.08	3 180 966.24
L161	938.30	3 181	542.21	R161	1 235.79	3 180 937.78
L162	1 084.90	3 181	301.33	R162	1 237.57	3 180 932.28
L163	1 079.57	3 181	295.37	R163	1 237.31	3 180 919.53
L164	1 127.18	3 181	216.94	R164	1 237.36	3 180 902.42
L165	1 142.99	3 181	174.38	R165	1 230.66	3 180 478.47
L166	1 198.70	3 181	081.37	R166	1 229.86	3 180 435.03
L167	1 218.23	3 181	074.96	R167	1 229.66	3 180 421.89
L168	1 246.46	3 181	001.04	R168	1 230.71	3 180 382.84
L169	1 255.90	3 180	960.04	R169	1 244.36	3 180 325.07
L170	1 261.53	3 180	939.18	R170	1 256.01	3 180 296.10
L171	1 261.89	3 180	917.12	R171	1 287.13	3 180 250.41
L172	1 254.62	3 180	482.62	R172	1 292.65	3 180 244.42
L173	1 253.81	3 180	435.77	R173	1 293.95	3 180 244.85
L174	1 250.93	3 180	426.02	R174	1 305.67	3 180 235.30
L175	1 259.11	3 180	355.57	R175	1 309.15	3 180 232.58
L176	1 322.50	3 180	238.46	R176	1 326.52	3 180 209.84
L177	1 328.85	3 180	233.91	R177	1 337.39	3 180 202.02
L178	1 331.96	3 180	231.68	R178	1 362.28	3 180 184.12
L179	1 340.96	3 180	225.25	R179	1 478.12	3 180 141.26
L180	1 357.06	3 180	213.72	R180	1 496.83	3 180 132.99
L181	1 389.39	3 180	196.97	R181	1 523.11	3 180 107.95
L182	1 478.96	3 180	168.51	R182	1 530.97	3 180 084.24
L183	1 511.61	3 180	148.37	R183	1 534.12	3 180 074.74
L184	1 550.70	3 180	116.05	R184	1 590.44	3 179 986.78
L185	1 646.93	3 179	982.93	R185	1 603.86	3 179 960.40
L186	1 649.47	3 179	955.44	R186	1 605.21	3 179 957.74
L187	1 631.26	3 179	909.16	R187	1 603.99	3 179 934.00
L188	1 608.43	3 179	851.34	R188	1 596.44	3 179 916.58
L189	1 606.17	3 179	845.71	R189	1 576.94	3 179 871.63
L190	1 586.17	3 179	798.49	R190	1 559.44	3 179 809.86
L191	1 533.31	3 179	695.16	R191	1 530.01	3 179 744.12
L192	1 520.27	3 179	669.78	R192	1 516.10	3 179 723.25
L193	1 502.46	3 179	637.18	R193	1 482.87	3 179 673.41
L194	1 498.12	3 179	612.83	R194	1 476.66	3 179 662.76
L195	1 472.96	3 179	549.32	R195	1 446.62	3 179 611.23
L196	1 434.50	3 179	509.11	R196	1 424.55	3 179 565.67
L197	1 423.20	3 179	455.49	R197	1 407.35	3 179 505.31
L198	1 420.18	3 179	418.70	R198	1 400.31	3 179 474.16
L199	1 423.64	3 179	364.83	R199	1 401.14	3 179 465.70
L200	1 427.63	3 179	329.14	R200	1 398.85	3 179 440.49
L201	1 423.95	3 179	304.89	R201	1 398.10	3 179 423.42
L202	1 425.43	3 179	281.72	R202	1 393.67	3 179 382.98
L203	1 449.84	3 179	068.06	R203	1 394.34	3 179 353.99
L204	1 451.81	3 179	050.81	R204	1 393.69	3 179 336.06
				Vel Sheet	20 Van of 21	P1186/19

This gazette is also available free online at [www.gpwonline.co.za](http://www.gpwonline.co.za)