

---

**GOVERNMENT NOTICES • GOEWERMENTSKENNISGEWINGS**

---

**DEPARTMENT OF TRANSPORT**

NO. 6419

11 July 2025

**THE SOUTH AFRICAN NATIONAL ROADS  
AGENCY SOC LIMITED**Registration No: 1998/009584/30

---

**DECLARATION AMENDMENT OF NATIONAL ROAD R30 SECTION 2****AMENDMENT OF DECLARATION NO. 550 OF 2003**

By virtue of section 40(1)(b) of The South African National Roads Agency Limited and National Roads Act, 1998 (Act No. 7 of 1998), I hereby amend Declaration No. 550 of 2003 by substituting Paragraph (II) of the Annexure of the descriptive declaration from Brandfort up to Theunissen, with the accompanying sheets 1 to 12 of Plan No. P1177/19.

**(National Road R30 Section 2: Brandfort – Theunissen)**  
**MINISTER OF TRANSPORT**

DEPARTEMENT VAN VERVOER

NO. 6419

11 Julie 2025

**DIE SUID-AFRIKAANSE NASIONALE  
PADAGENTSKAP MSB BEPERK**

Registrasie No: 1998/009584/30

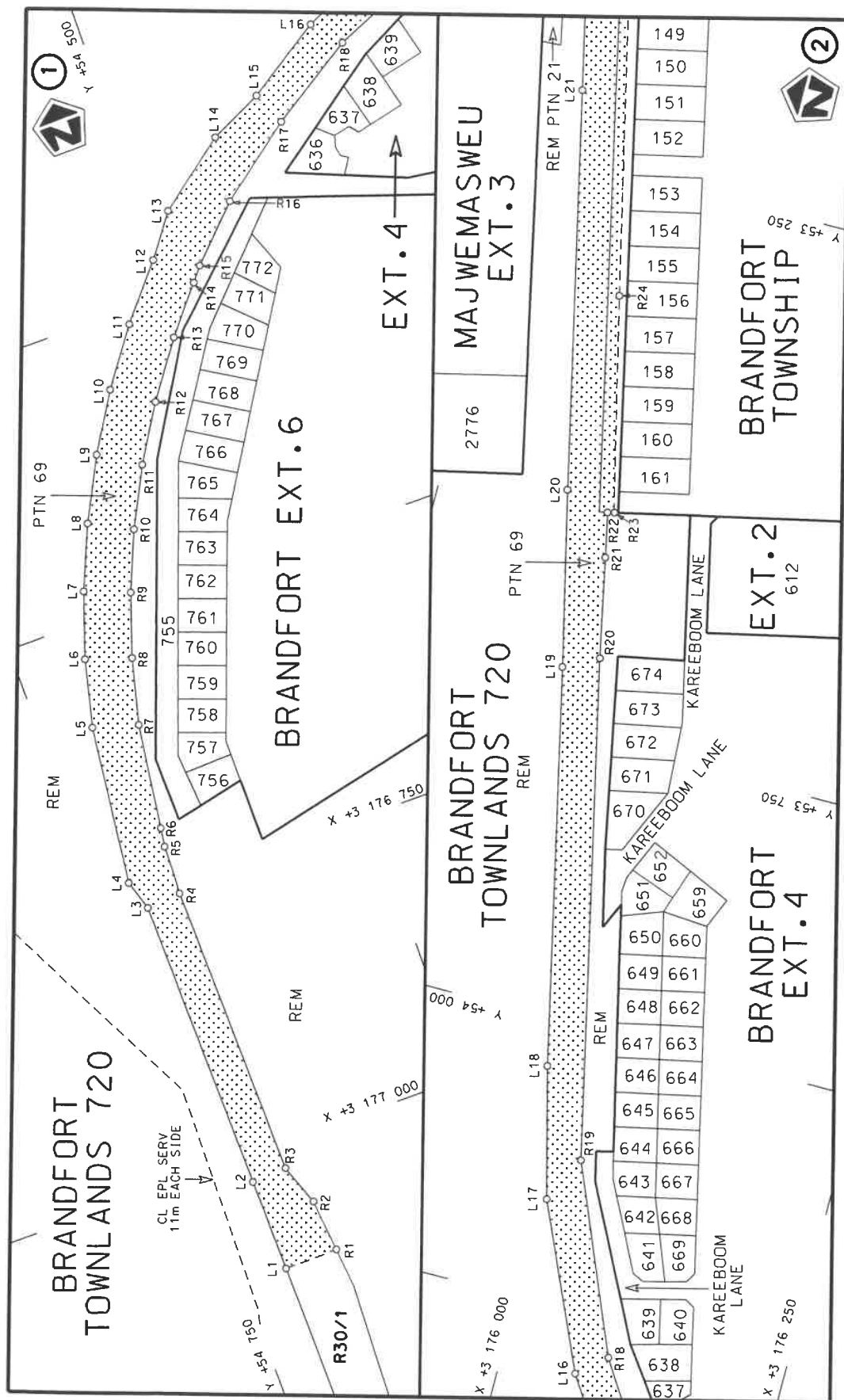
**VERKLARING WYSIGING VAN NASIONALE PAD R30 SEKSIE 2**


WYSIGING VAN VERKLARING NO. 550 VAN 2003

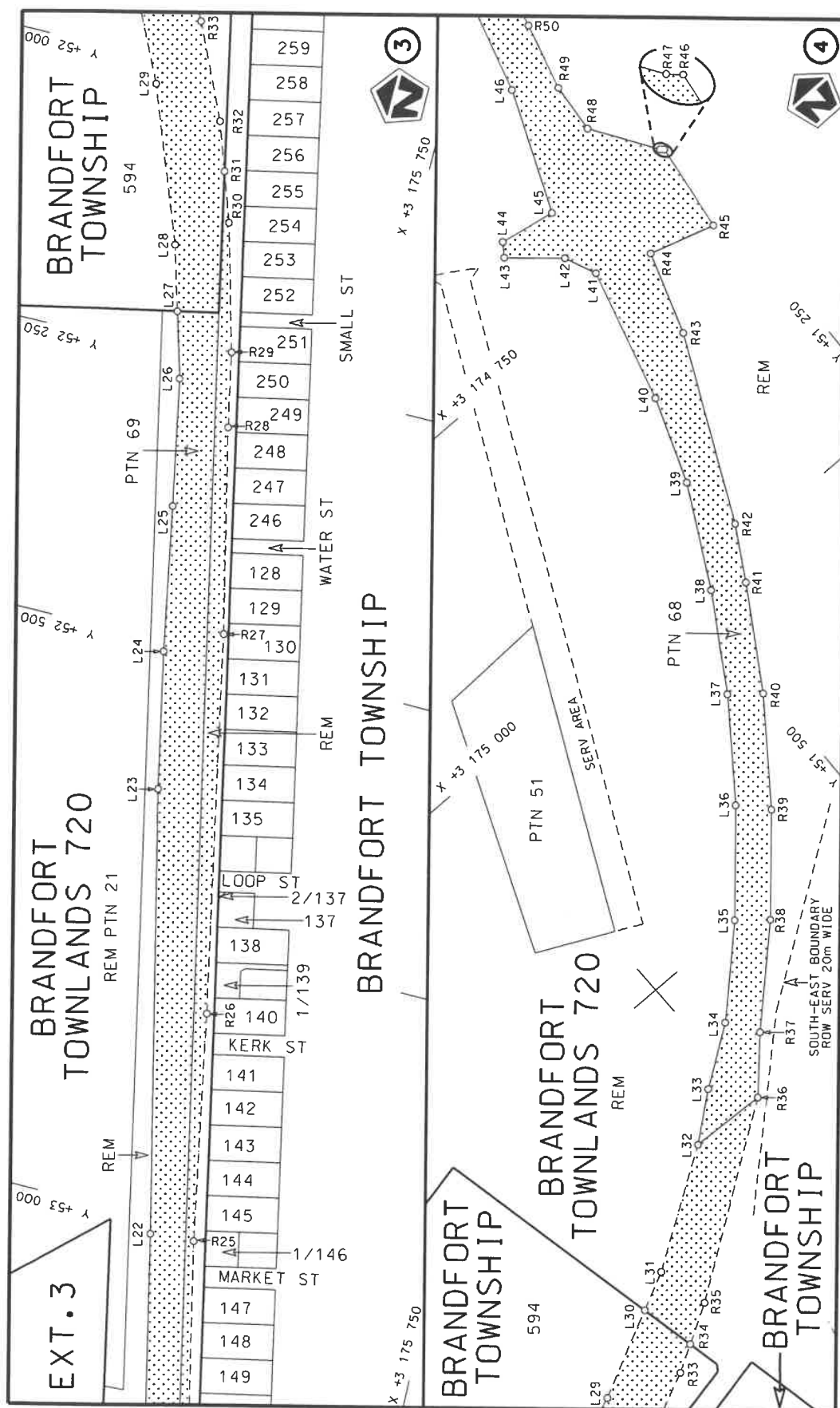
Kragtens Artikel 40(1)(b) van die Wet op die Suid-Afrikaanse Nasionale Padagentskap Beperk en op Nasionale Paaie, 1998 (Wet No. 7 van 1998), wysig ek hiermee Verklaring No. 550 van 2003 deur Paragraaf (II) van die Bylae te vervang van die beskrywende verklaring vanaf Brandfort tot by Theunissen, met meegaande velle 1 tot 12 van Plan no. P1177/19.


**(Nasionale Pad R30 Seksie 2: Brandfort – Theunissen)**

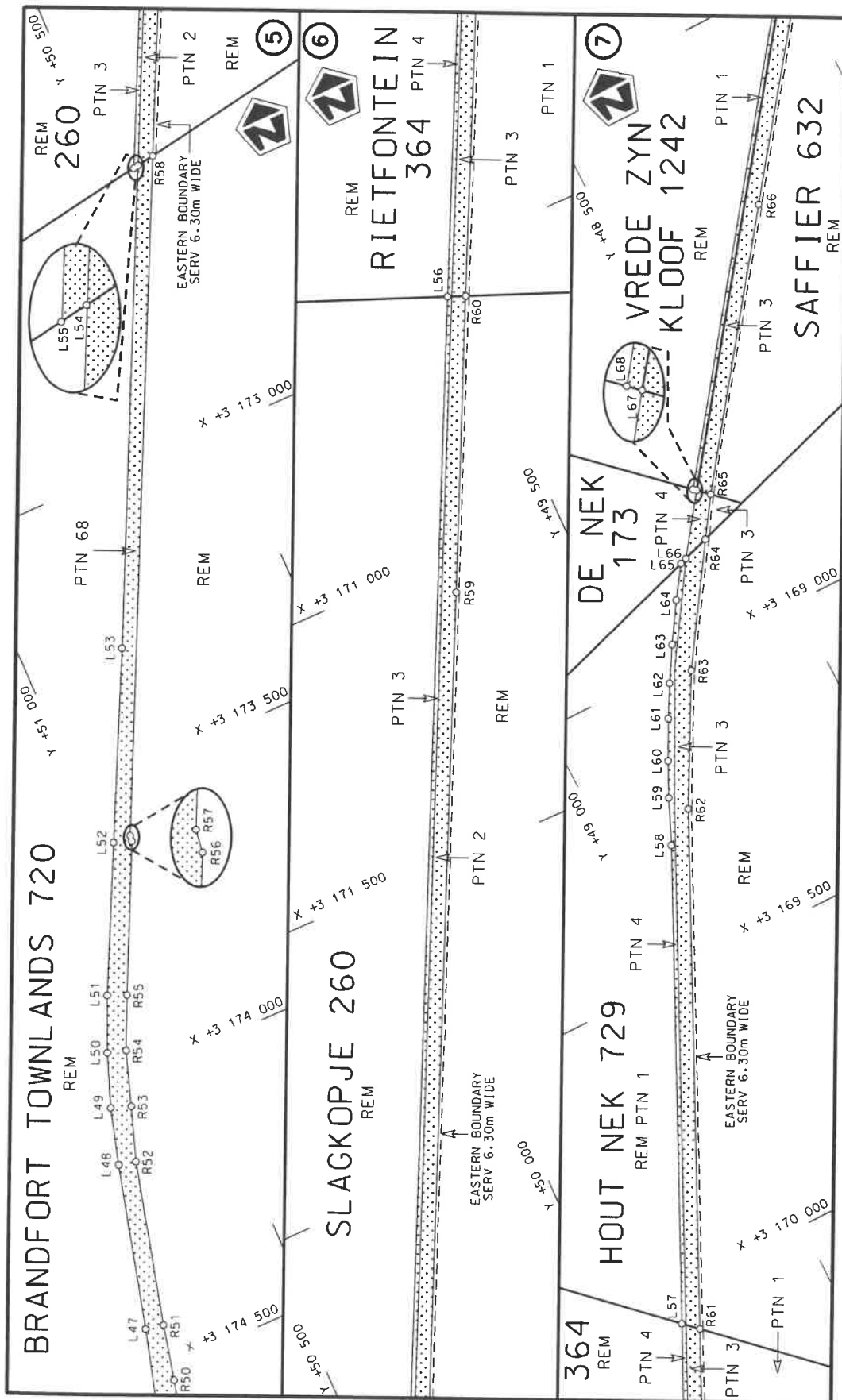
  
**MINISTER VAN VERVOER**



Die Suid Afrikaanse Nasionale Padagentskap MSB Bpk	Die figuur getoon		steldie padreserwe voor van 'n gedeelte represents the road reserve of a portion van Nasionale Roete R30 of National Route	Vel	1	of	12
The South African National Roads Agency SOC Ltd	The figure shown			2	Plan	P1177/19	

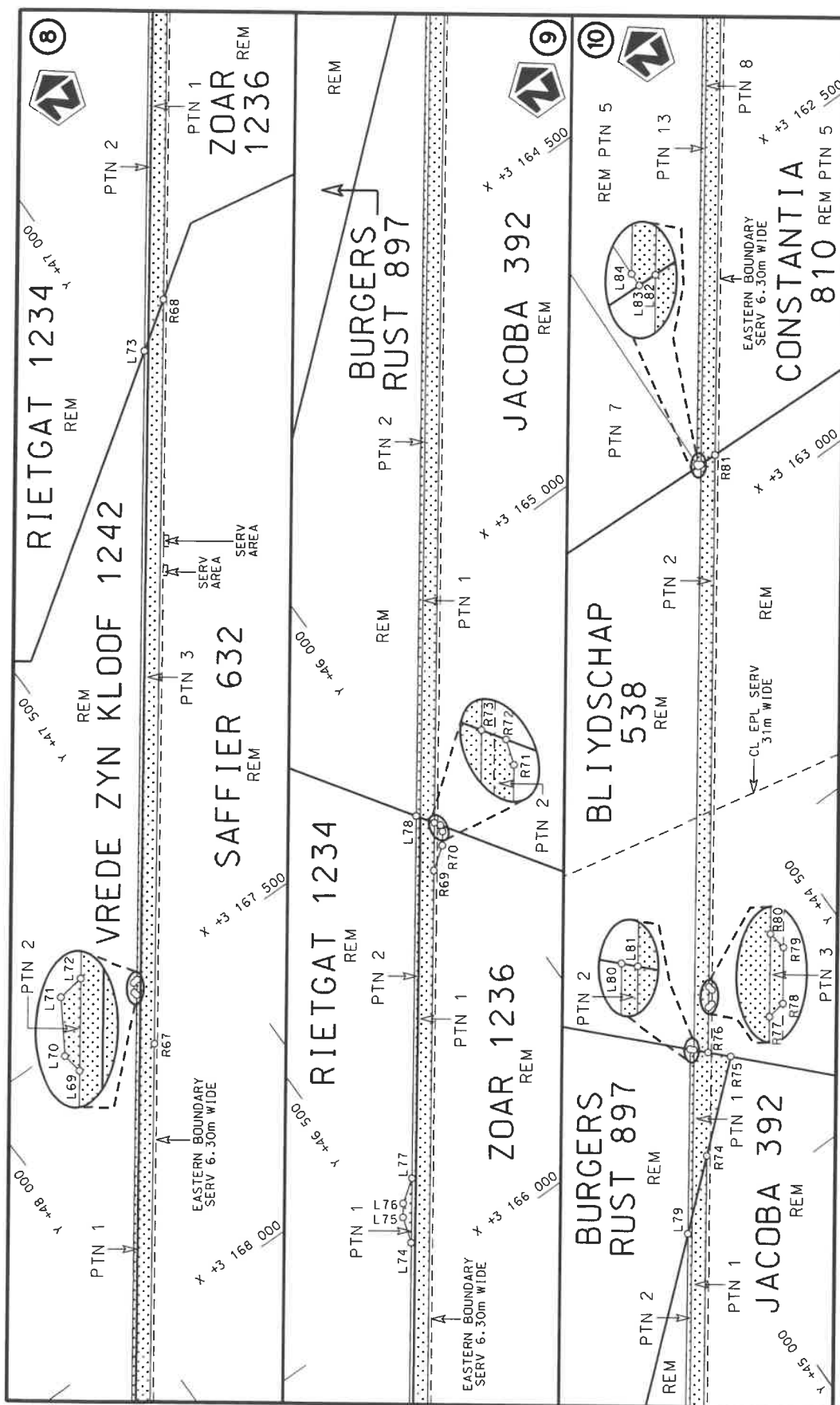


Die Suid Afrikaanse Nasionale Padagentskap MSB Bpk	Die figuur getoon		steldie padreserwe voor van 'n gedeelte represents the road reserve of a portion van Nasionale Roete R30 Seksie of National Route Section	Vel	van
The South African National Roads Agency SOC Ltd	The figure shown			Sheet	2 of
			Plan	P1177/19	



Die Suid Afrikaanse Nasionale Padagentskap MSB Bpk The South African National Roads Agency SOC Ltd	Die figuur getoon The figure shown	steldie padreserwe voor van 'n gedeelte represents the road reserve of a portion van Nasionale Roete R30 of National Route	Vel Sheet 3 of 12
Plan P1177/19	Seksie Section 2	R30	Section

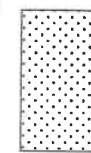


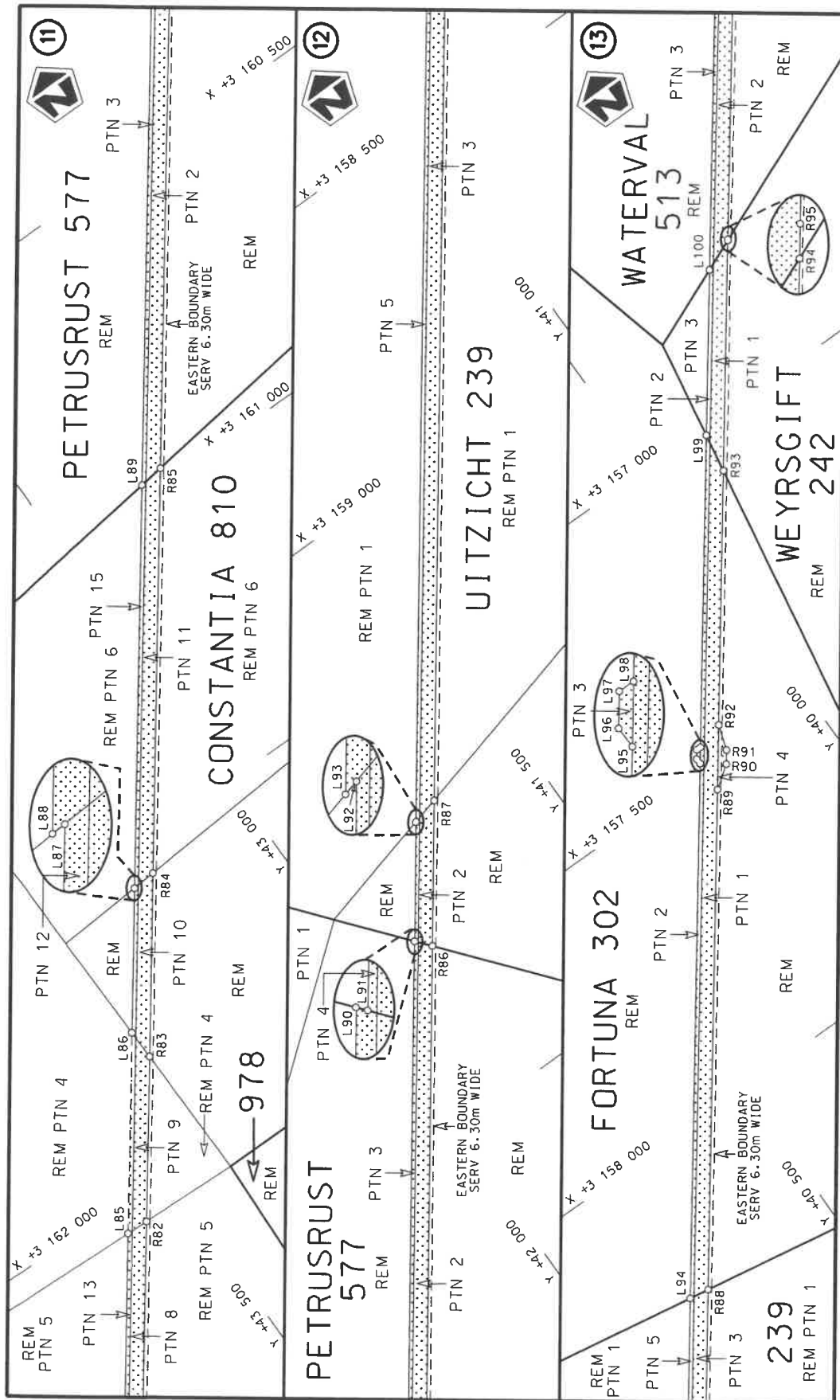


Die Suid Afrikaanse Nasionale Padagentskop MSB Bpk  
The South African National Roads Agency SOC Ltd

Die figuur getoon  
The figure shown

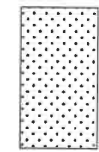
stelt die padreserwe voor van 'n gedeelte  
represents the road reserve of a portion  
van Nasionale Roete R30 Sektie 2  
of National Route





Die Suid Afrikaanse Nasionale Padagentskop MSB Bpk  
The South African National Roads Agency SOC Ltd

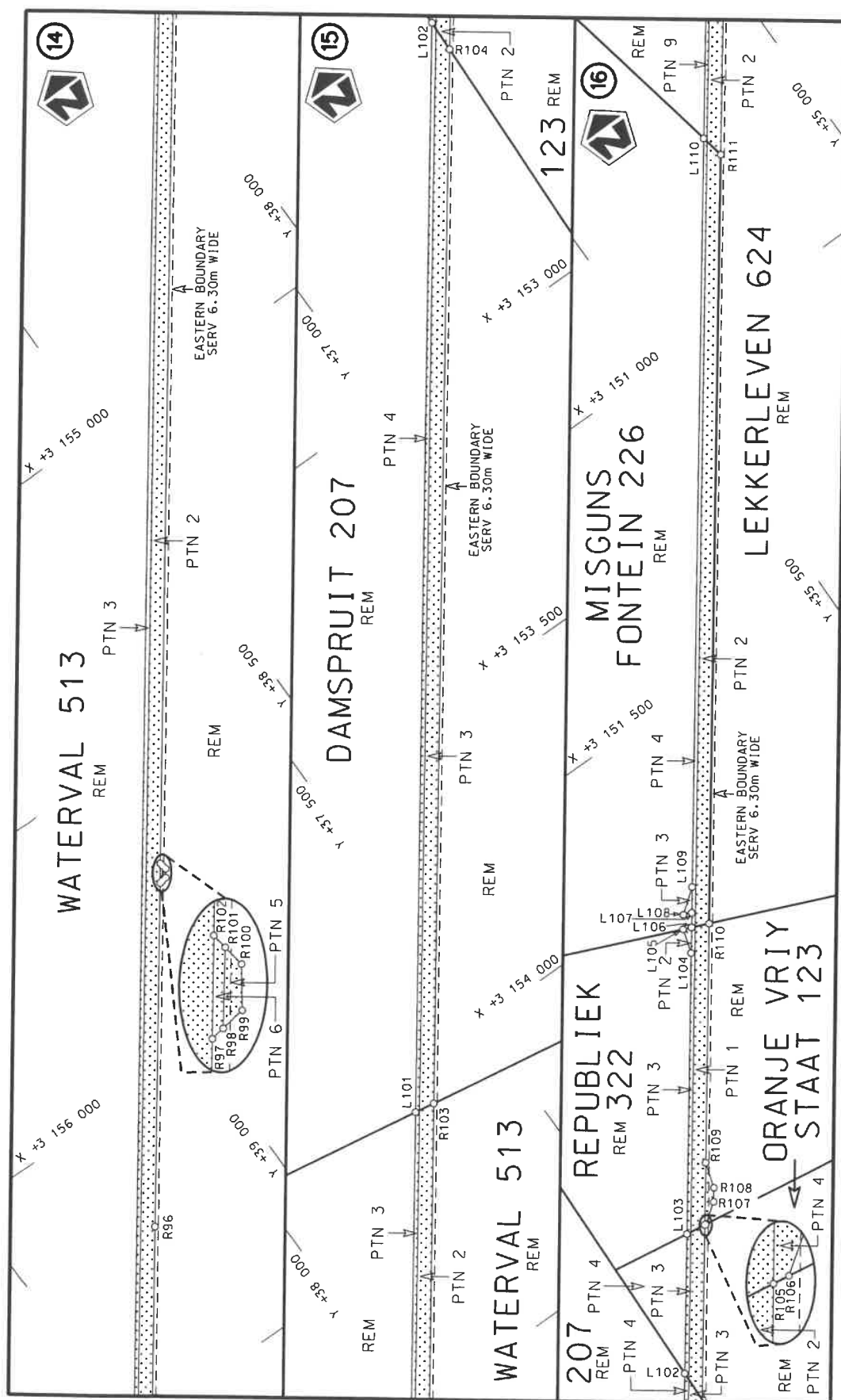
Die figuur getoon  
The figure shown



stelt die padreserwe voor van 'n gedeelte  
represents the road reserve of a portion  
van Nasionale Roete R30  
of National Route

Vel  
Sheet 5 of 12

Plan  
P1177/19



Die Suid Afrikaanse Nasionale Padagentskap MSB Bpk  
The South African National Roads Agency SOC Ltd

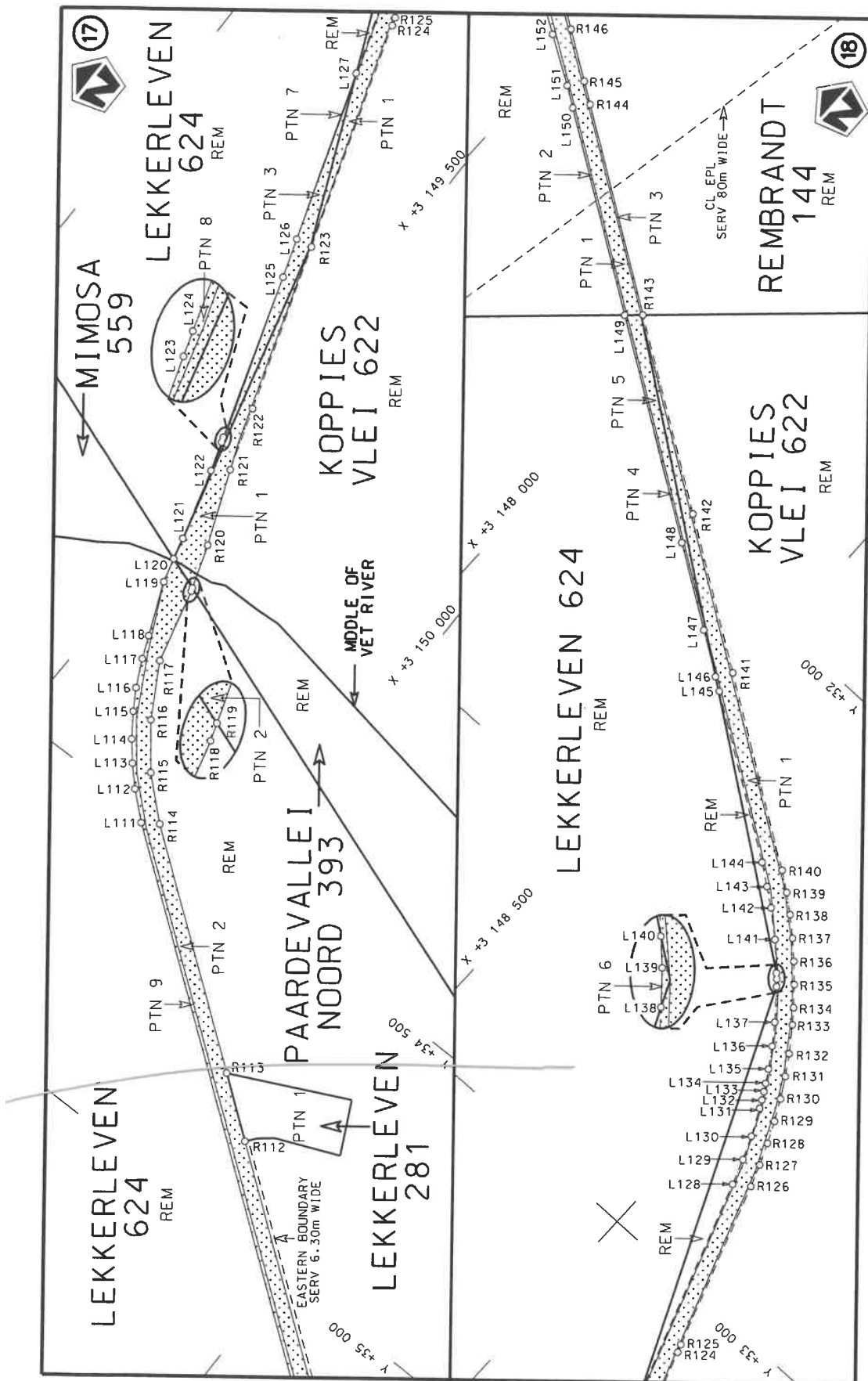
Die figuur getoon  
The figure shown



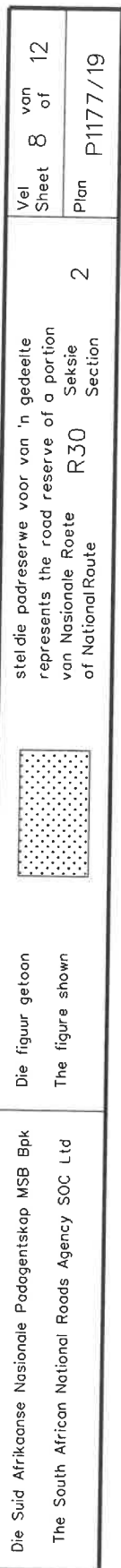
stel die padreserwe voor van 'n gedeelte  
represents the road reserve of a portion  
van Nasionale Roete R30  
of National Route

Vel  
Sheet 6 of 12  
Plan P1177/19





Die Suid Afrikaanse Nasionale Padagentskap MSB Bpk The South African National Roads Agency SOC Ltd	<div data-bbox="1292 1093 1380 1243" data-label="Image"> </div> <div data-bbox="1284 1317 1364 1478" data-label="Text"> <p>Die figuur getoon The figure shown</p> </div> <div data-bbox="1284 622 1396 1025" data-label="Text"> <p>stel die padreserwe voor van 'n gedeelte represents the road reserve of a portion van Nasionale Roete R30 of National Route</p> </div>	Vel Sheet 7 of 12  Plan P1177/19
---	---	---



PADRESERWE KOÖRDINATE / ROAD RESERVE CO-ORDINATES									
LINKERKANT/LEFT HAND SIDE					REGTERKANT/RIGHT HAND SIDE				
	Y		X	WG 27°		Y		X	
L1	54 709.67	3	177	106.54	R1	54 661.53	3	177	105.98
L2	54 710.64	3	177	023.35	R2	54 665.75	3	177	058.48
L3	54 713.42	3	176	760.09	R3	54 678.90	3	177	021.70
L4	54 721.71	3	176	733.28	R4	54 682.43	3	176	757.71
L5	54 703.98	3	176	591.33	R5	54 680.48	3	176	713.68
L6	54 688.82	3	176	531.56	R6	54 678.01	3	176	696.83
L7	54 668.93	3	176	474.04	R7	54 664.31	3	176	603.23
L8	54 644.69	3	176	418.12	R8	54 649.23	3	176	545.03
L9	54 615.99	3	176	363.31	R9	54 630.07	3	176	489.45
L10	54 584.42	3	176	312.68	R10	54 607.89	3	176	437.30
L11	54 548.40	3	176	263.42	R11	54 580.81	3	176	385.45
L12	54 508.51	3	176	216.83	R12	54 550.41	3	176	336.67
L13	54 480.75	3	176	180.08	R13	54 515.06	3	176	288.13
L14	54 418.51	3	176	132.85	R14	54 481.39	3	176	248.35
L15	54 371.37	3	176	110.50	R15	54 471.19	3	176	235.86
L16	54 304.04	3	176	067.43	R16	54 426.11	3	176	190.96
L17	54 158.74	3	176	003.70	R17	54 358.73	3	176	140.13
L18	54 042.88	3	175	974.33	R18	54 282.83	3	176	092.62
L19	53 692.79	3	175	897.67	R19	54 117.22	3	176	024.38
L20	53 538.08	3	175	862.15	R20	53 676.80	3	175	928.06
L21	53 188.27	3	175	785.15	R21	53 588.21	3	175	910.06
L22	53 013.55	3	175	745.59	R22	53 548.64	3	175	901.86
L23	52 627.68	3	175	654.22	R23	53 547.35	3	175	907.77
L24	52 507.58	3	175	628.67	R24	53 358.11	3	175	863.50
L25	52 380.40	3	175	604.35	R25	53 010.25	3	175	784.59
L26	52 269.07	3	175	582.37	R26	52 810.83	3	175	745.82
L27	52 211.46	3	175	565.61	R27	52 479.47	3	175	676.61
L28	52 155.04	3	175	549.17	R28	52 300.33	3	175	634.81
L29	52 020.73	3	175	497.32	R29	52 234.89	3	175	621.22
L30	51 944.51	3	175	459.74	R30	52 124.18	3	175	590.51
L31	51 910.70	3	175	443.07	R31	52 080.62	3	175	575.23
L32	51 812.32	3	175	378.62	R32	52 038.82	3	175	560.57
L33	51 772.74	3	175	347.03	R33	51 956.67	3	175	522.02
L34	51 722.63	3	175	312.09	R34	51 933.81	3	175	508.82
L35	51 656.57	3	175	248.52	R35	51 899.43	3	175	488.96
L36	51 588.89	3	175	171.54	R36	51 744.21	3	175	381.48
L37	51 529.90	3	175	092.00	R37	51 704.72	3	175	338.79
L38	51 480.34	3	175	012.45	R38	51 632.12	3	175	269.07
L39	51 434.23	3	174	925.73	R39	51 567.33	3	175	195.36
L40	51 406.05	3	174	850.93	R40	51 505.26	3	175	112.22
L41	51 373.30	3	174	732.41	R41	51 452.26	3	175	027.43
L42	51 385.28	3	174	704.33	R42	51 425.51	3	174	981.75
L43	51 425.94	3	174	668.77	R43	51 349.69	3	174	823.00
L44	51 417.91	3	174	657.24	R44	51 325.17	3	174	750.77
L45	51 367.82	3	174	666.17	R45	51 266.82	3	174	767.96
L46	51 323.61	3	174	560.33	R46	51 255.68	3	174	688.60
L47	51 283.88	3	174	422.45	R47	51 258.43	3	174	686.05
L48	51 207.80	3	174	134.43	R48	51 294.91	3	174	630.27
L49	51 179.48	3	174	035.32	R49	51 290.97	3	174	585.87
L50	51 144.71	3	173	942.35	R50	51 274.94	3	174	526.56
L51	51 103.10	3	173	848.43	R51	51 252.38	3	174	428.37
					Vel 9 Van 12 of Sheet				
					P1177/19				

PADRESERWE KOÖRDINATE / ROAD RESERVE CO-ORDINATES									
LINKERKANT/LEFT HAND SIDE					REGTERKANT/RIGHT HAND SIDE				
	Y		X	WG 27°		Y		X	
L52	50 981.73	3	173	602.85	R52	51 177.68	3	174	141.17
L53	50 826.77	3	173	291.06	R53	51 144.95	3	174	047.06
L54	50 451.15	3	172	513.90	R54	51 112.65	3	173	952.26
L55	50 460.07	3	172	515.43	R55	51 070.89	3	173	862.03
L56	49 522.49	3	170	575.74	R56	50 951.20	3	173	613.76
L57	49 272.24	3	170	058.01	R57	50 949.73	3	173	603.24
L58	48 899.24	3	169	286.29	R58	50 420.61	3	172	508.65
L59	48 864.56	3	169	208.59	R59	49 722.78	3	171	065.07
L60	48 835.64	3	169	148.90	R60	49 492.53	3	170	587.71
L61	48 800.72	3	169	081.93	R61	49 247.74	3	170	081.08
L62	48 769.83	3	169	026.59	R62	48 842.21	3	169	242.01
L63	48 734.35	3	168	966.97	R63	48 724.60	3	169	024.20
L64	48 691.35	3	168	899.52	R64	48 595.18	3	168	826.32
L65	48 654.27	3	168	845.29	R65	48 550.41	3	168	758.98
L66	48 642.18	3	168	841.13	R66	48 238.38	3	168	337.32
L67	48 569.39	3	168	741.51	R67	47 686.80	3	167	594.82
L68	48 574.66	3	168	736.65	R68	46 895.83	3	166	528.30
L69	47 661.13	3	167	505.43	R69	46 071.68	3	165	417.04
L70	47 662.13	3	167	499.32	R70	46 033.17	3	165	389.67
L71	47 652.84	3	167	484.49	R71	46 018.27	3	165	369.59
L72	47 644.79	3	167	483.41	R72	46 014.49	3	165	358.30
L73	46 976.63	3	166	582.89	R73	46 020.90	3	165	348.57
L74	46 493.93	3	165	932.10	R74	44 941.68	3	163	893.38
L75	46 479.06	3	165	886.84	R75	44 802.73	3	163	774.79
L76	46 464.17	3	165	866.76	R76	44 831.54	3	163	745.00
L77	46 425.30	3	165	839.57	R77	44 783.61	3	163	680.37
L78	46 039.78	3	165	319.93	R78	44 775.21	3	163	679.13
L79	45 050.37	3	163	986.15	R79	44 760.36	3	163	659.02
L80	44 854.19	3	163	721.56	R80	44 761.56	3	163	650.65
L81	44 849.11	3	163	726.82	R81	44 196.50	3	162	888.81
L82	44 226.94	3	162	887.75	R82	43 577.36	3	162	054.06
L83	44 232.68	3	162	887.55	R83	43 401.88	3	161	817.47
L84	44 232.51	3	162	883.38	R84	43 206.62	3	161	554.21
L85	43 616.24	3	162	052.65	R85	42 776.09	3	160	973.75
L86	43 402.51	3	161	764.61	R86	41 838.62	3	159	709.80
L87	43 248.55	3	161	557.08	R87	41 683.91	3	159	501.21
L88	43 248.79	3	161	557.09	R88	40 761.09	3	158	257.02
L89	42 820.26	3	160	979.46	R89	40 228.70	3	157	539.48
L90	41 859.29	3	159	684.35	R90	40 189.45	3	157	511.51
L91	41 858.82	3	159	684.93	R91	40 174.54	3	157	491.42
L92	41 732.10	3	159	513.46	R92	40 159.95	3	157	446.80
L93	41 732.68	3	159	513.61	R93	39 889.75	3	157	082.24
L94	40 796.15	3	158	251.11	R94	39 645.29	3	156	752.65
L95	40 226.91	3	157	483.54	R95	39 644.34	3	156	751.37
L96	40 227.17	3	157	473.41	R96	39 250.14	3	156	220.63
L97	40 217.25	3	157	460.05	R97	38 882.79	3	155	725.40
L98	40 209.55	3	157	460.12	R98	38 877.68	3	155	724.67
L99	39 878.02	3	157	013.09	R99	38 868.75	3	155	723.38
L100	39 702.57	3	156	776.51	R100	38 859.60	3	155	710.29
L101	37 688.65	3	154	062.01	R101	38 860.75	3	155	702.35
L102	36 525.94	3	152	494.60	R102	38 861.55	3	155	696.77
					<div> <div>Vel</div> <div>10</div> <div>Van</div> <div>of</div> <div>12</div> </div> <div>P1177/19</div>				



PADRESERVE KOÖRDINATE / ROAD RESERVE CO-ORDINATES						
LINKERKANT/LEFT HAND SIDE				REGTERKANT/RIGHT HAND SIDE		
	Y	X	WG 27°		Y	X
L103	36 376.37	3 152 293.21		R103	37 653.36	3 154 067.99
L104	36 075.79	3 151 888.16		R104	36 528.08	3 152 551.00
L105	36 062.55	3 151 845.23		R105	36 340.99	3 152 298.77
L106	36 048.25	3 151 851.37		R106	36 339.07	3 152 299.07
L107	36 032.80	3 151 830.22		R107	36 303.85	3 152 274.41
L108	36 047.08	3 151 824.29		R108	36 288.94	3 152 254.33
L109	36 005.17	3 151 792.98		R109	36 274.41	3 152 209.02
L110	35 205.88	3 150 716.27		R110	36 018.55	3 151 864.09
L111	34 515.61	3 149 785.98		R111	35 197.70	3 150 757.72
L112	34 474.57	3 149 738.76		R112	34 852.56	3 150 292.62
L113	34 440.70	3 149 706.34		R113	34 776.19	3 150 189.64
L114	34 407.02	3 149 677.95		R114	34 496.80	3 149 813.61
L115	34 366.17	3 149 648.74		R115	34 433.62	3 149 742.97
L116	34 329.35	3 149 626.17		R116	34 358.55	3 149 683.45
L117	34 281.29	3 149 602.11		R117	34 264.32	3 149 629.09
L118	34 241.35	3 149 585.17		R118	34 130.71	3 149 595.00
L119	34 147.90	3 149 545.90		R119	34 124.52	3 149 592.90
L120	34 104.22	3 149 533.95		R120	34 046.88	3 149 566.61
L121	34 065.32	3 149 523.59		R121	33 914.27	3 149 513.32
L122	33 937.13	3 149 487.06		R122	33 802.41	3 149 475.89
L123	33 885.15	3 149 469.66		R123	33 506.52	3 149 376.88
L124	33 876.23	3 149 466.68		R124	33 102.07	3 149 241.55
L125	33 581.45	3 149 370.54		R125	33 088.01	3 149 236.66
L126	33 511.94	3 149 347.12		R126	32 789.78	3 149 137.05
L127	33 209.93	3 149 244.32		R127	32 750.25	3 149 122.82
L128	32 809.06	3 149 109.63		R128	32 711.41	3 149 106.82
L129	32 763.38	3 149 093.51		R129	32 673.33	3 149 089.08
L130	32 721.61	3 149 076.35		R130	32 636.09	3 149 069.63
L131	32 674.07	3 149 053.40		R131	32 599.77	3 149 048.51
L132	32 660.25	3 149 046.08		R132	32 564.44	3 149 025.77
L133	32 646.47	3 149 038.79		R133	32 521.76	3 148 994.89
L134	32 633.22	3 149 030.95		R134	32 497.06	3 148 975.62
L135	32 610.31	3 149 017.41		R135	32 465.14	3 148 948.31
L136	32 575.11	3 148 994.31		R136	32 434.49	3 148 919.58
L137	32 539.72	3 148 968.52		R137	32 405.17	3 148 889.49
L138	32 489.64	3 148 927.17		R138	32 376.56	3 148 857.27
L139	32 479.18	3 148 918.23		R139	32 350.76	3 148 825.49
L140	32 471.31	3 148 910.48		R140	32 326.42	3 148 792.57
L141	32 428.23	3 148 867.79		R141	32 121.58	3 148 485.16
L142	32 390.31	3 148 823.80		R142	31 956.96	3 148 237.54
L143	32 366.86	3 148 792.16		R143	31 751.23	3 147 927.66
L144	32 340.23	3 148 756.24		R144	31 533.71	3 147 600.47
L145	32 162.88	3 148 489.50		R145	31 509.70	3 147 564.35
L146	32 147.73	3 148 466.29		R146	31 456.31	3 147 482.96
L147	32 099.45	3 148 393.67		R147	31 356.65	3 147 331.04
L148	32 009.16	3 148 257.85		R148	31 341.84	3 147 307.56
L149	31 773.62	3 147 903.52		R149	31 328.17	3 147 282.82
L150	31 559.33	3 147 581.20		R150	31 315.67	3 147 257.76
L151	31 536.35	3 147 546.64		R151	31 306.90	3 147 237.87
L152	31 485.92	3 147 464.44		R152	31 302.54	3 147 226.63
L153	31 390.86	3 147 309.52		R153	31 250.69	3 147 092.96
				Vel Sheet	11 Van of 12	P1177/19



PADRESERWE KOÖRDINATE / ROAD RESERVE CO-ORDINATES							
LINKERKANT/LEFT HAND SIDE				REGTERKANT/RIGHT HAND SIDE			
	Y	X	WG 27°		Y	X	
L154	31 368.63	3 147 289.70		R154	31 094.43	3 146 690.13	
L155	31 355.06	3 147 265.20		R155	31 013.68	3 146 481.94	
L156	31 342.70	3 147 239.99		R156	30 959.93	3 146 344.00	
L157	31 331.64	3 147 214.25		R157	30 957.13	3 146 336.16	
L158	31 329.92	3 147 209.80		R158	30 866.30	3 146 101.65	
L159	31 327.53	3 147 212.79		R159	30 658.89	3 145 566.19	
L160	31 319.90	3 147 186.24		R160	30 640.95	3 145 558.71	
L161	31 236.87	3 146 971.71		R161	30 631.01	3 145 532.42	
L162	31 235.96	3 146 969.35		R162	30 639.57	3 145 516.32	
L163	31 061.11	3 146 515.99		R163	30 631.41	3 145 495.25	
L164	30 982.40	3 146 312.77		R164	30 492.13	3 145 136.24	
L165	30 896.13	3 146 090.10		R165	30 392.97	3 144 880.32	
L166	30 652.80	3 145 462.73		R166	30 396.14	3 144 878.07	
L167	30 595.65	3 145 315.07		R167	30 225.01	3 144 436.61	
L168	30 520.82	3 145 121.80		R168	30 216.26	3 144 423.63	
L169	30 419.87	3 144 861.19		R169	30 165.29	3 144 291.93	
L170	30 417.82	3 144 862.65		R170	30 168.59	3 144 291.09	
L171	30 290.23	3 144 533.33		R171	30 152.64	3 144 250.46	
L172	30 297.00	3 144 543.37		R172	29 987.20	3 143 830.06	
L173	30 196.53	3 144 283.97		R173	29 989.46	3 143 829.02	
L174	30 128.57	3 144 108.53		R174	29 705.22	3 143 100.54	
L175	30 089.99	3 144 008.93		R175	29 693.41	3 143 069.73	
L176	30 015.64	3 143 817.01		R176	29 645.34	3 142 975.10	
L177	30 011.86	3 143 818.74		R177	29 587.11	3 142 897.61	
L178	29 866.79	3 143 442.89		R178	29 540.92	3 142 835.10	
L179	29 714.84	3 143 055.37		R179	29 479.46	3 142 775.84	
L180	29 667.87	3 142 963.46		R180	29 413.65	3 142 720.10	
L181	29 609.60	3 142 880.18		R181	29 351.92	3 142 677.18	
L182	29 538.58	3 142 799.98		R182	29 216.56	3 142 607.72	
L183	29 496.23	3 142 756.12		R183	29 091.48	3 142 554.38	
L184	29 422.57	3 142 694.17		R184	29 007.51	3 142 518.57	
L185	29 269.94	3 142 595.88		R185	28 535.33	3 142 317.21	
L186	29 244.80	3 142 586.52		R186	28 238.52	3 142 190.51	
L187	29 102.20	3 142 529.24		R187	28 224.15	3 142 184.35	
L188	29 024.34	3 142 497.97		R188	28 202.49	3 142 178.88	
L189	29 011.26	3 142 492.71		R189	28 096.70	3 142 132.83	
L190	28 939.69	3 142 462.09		R190	27 996.20	3 142 085.77	
L191	28 247.12	3 142 166.79		R191	27 987.84	3 142 080.46	
L192	28 247.03	3 142 163.50					
L193	28 101.79	3 142 099.56					
L194	28 023.03	3 142 053.05					
L195	28 011.98	3 142 045.43					

Vel 12 Van 12  
Sheet of

P1177/19







Printed by and obtainable from the Government Printer, Bosman Street, Private Bag X85, Pretoria, 0001  
Contact Centre Tel: 012-748 6200. eMail: [info.egazette@gpw.gov.za](mailto:info.egazette@gpw.gov.za)  
Publications: Tel: (012) 748 6053, 748 6061, 748 6065