
GOVERNMENT NOTICES • GOEWERMENTSKENNISGEWINGS

DEPARTMENT OF TRANSPORT

NO. 6418

11 July 2025

**THE SOUTH AFRICAN NATIONAL ROADS
AGENCY SOC LIMITED**Registration No: 1998/009584/30

DECLARATION AMENDMENT OF NATIONAL ROAD R555 SECTION 4

AMENDMENT OF DECLARATION No. 538 OF 2014.

By virtue of section 40(1)(b) of the South African National Roads Agency Limited and the National Roads Act 1998 (Act No. 7 of 1998), I hereby amend Declaration No. 538 of 2014 by substituting paragraph N(ii) of the Schedule, being the descriptive declaration of the route from its intersection with Provincial Road R577 up to Burgersfort, with the accompanying sheets 1 to 13 of Plan No. P1184/19.

In the town of Steelpoort the R555 Section 4 enters the town from the west and continuous in a easterly direction through the town.

In the town of Burgersfort the R555 Section 4 enters the town from the west and continuous in a easterly direction through the town up to its intersection with National Road R37.

(National Road R555 Section 4: R577 Intersection – Burgersfort)
MINISTER OF TRANSPORT

DEPARTEMENT VAN VERVOER

NO. 6418

11 Julie 2025

**DIE SUID-AFRIKAANSE NASIONALE
PADAGENTSKAP MSB BEPERK**

Registrasie No: 1998/009584/30

VERKLARING WYSIGING VAN NASIONALE PAD R555 SEKSIE 4

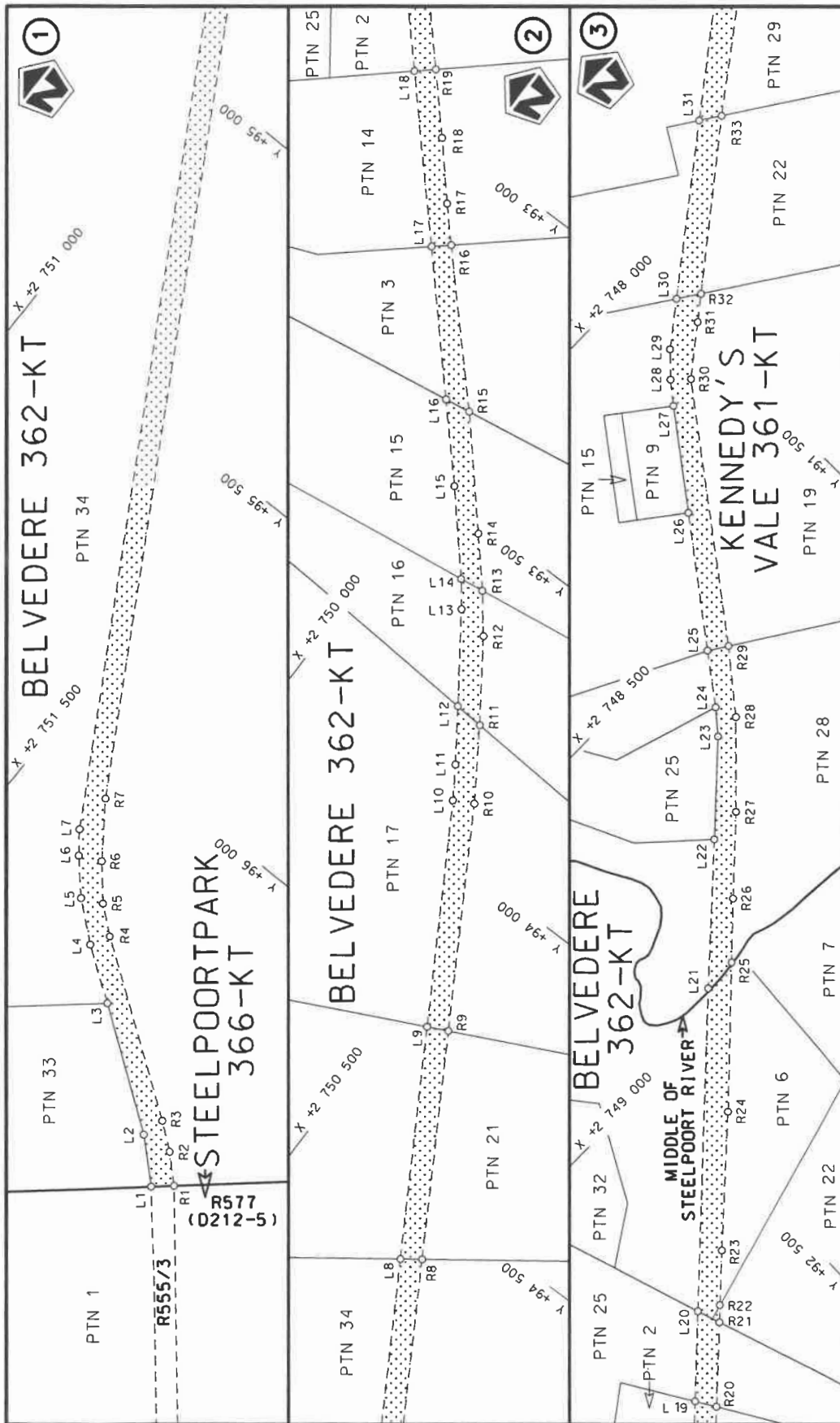
WYSIGING VAN VERKLARING No. 538 VAN 2014.

Kragtens Artikel 40(1)(b) van die Suid-Afrikaanse Nasionale Padagentskap Beperk en Nasionale Paaie Wet 1998 (Wet No. 7 van 1998), wysig ek hiermee Verklaring No. 538 van 2014 deur paragraaf N(ii) van die Skedule te vervang, synde die gedeelte van die beskrywende verklaring van die pad vanaf die interseksie met Provinsiale Pad R577 tot by Burgersfort, met bygaande velle 1 tot 13 van Plan No. P1184/19.

In die dorp Steelpoort kom die R555 Seksie 4 die dorp binne vanuit die weste en volg dan 'n oostelike rigting deur die dorp

In die dorp Burgersfort kom die R555 Seksie 4 die dorp binne vanuit die weste en volg dan 'n oostelike rigting deur die dorp tot by die interseksie daarvan met Nasionale Pad R37.

(Nasionale Pad R555 Seksie 4: R577 Interseksie – Burgersfort)
MINISTER VAN VERVOER



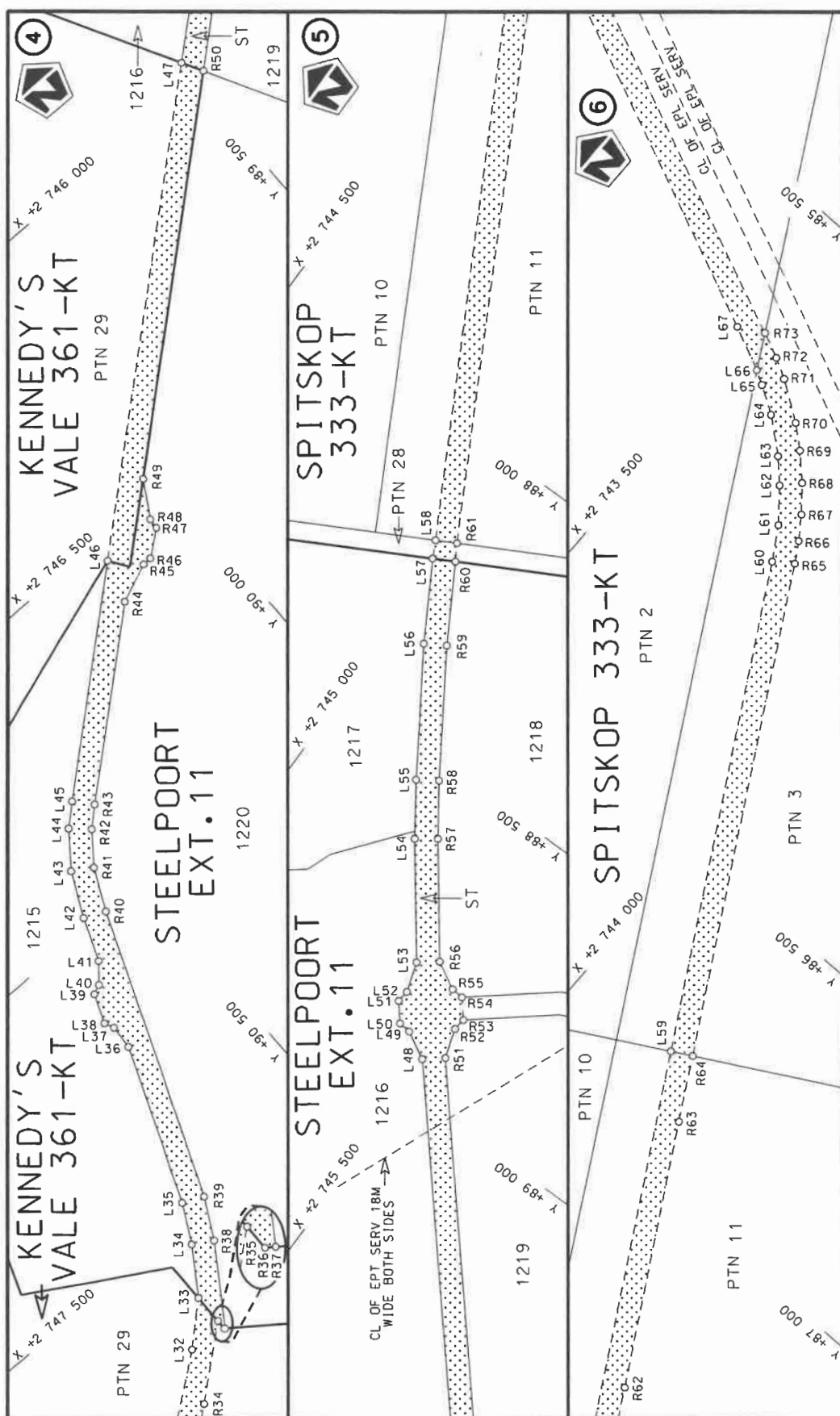
stelt die padreserwe voor van 'n gedeelte
represents the road reserve of a portion
van Nasionale Roete R555 Seksie
of National Route Section



Die figuur getoon
The figure shown

Die Suid Afrikaanse Nasionale Padagentskap MSB Bpk
The South African National Roads Agency SOC Ltd

Vel
Sheet 1 of 13
Plan P1184/19

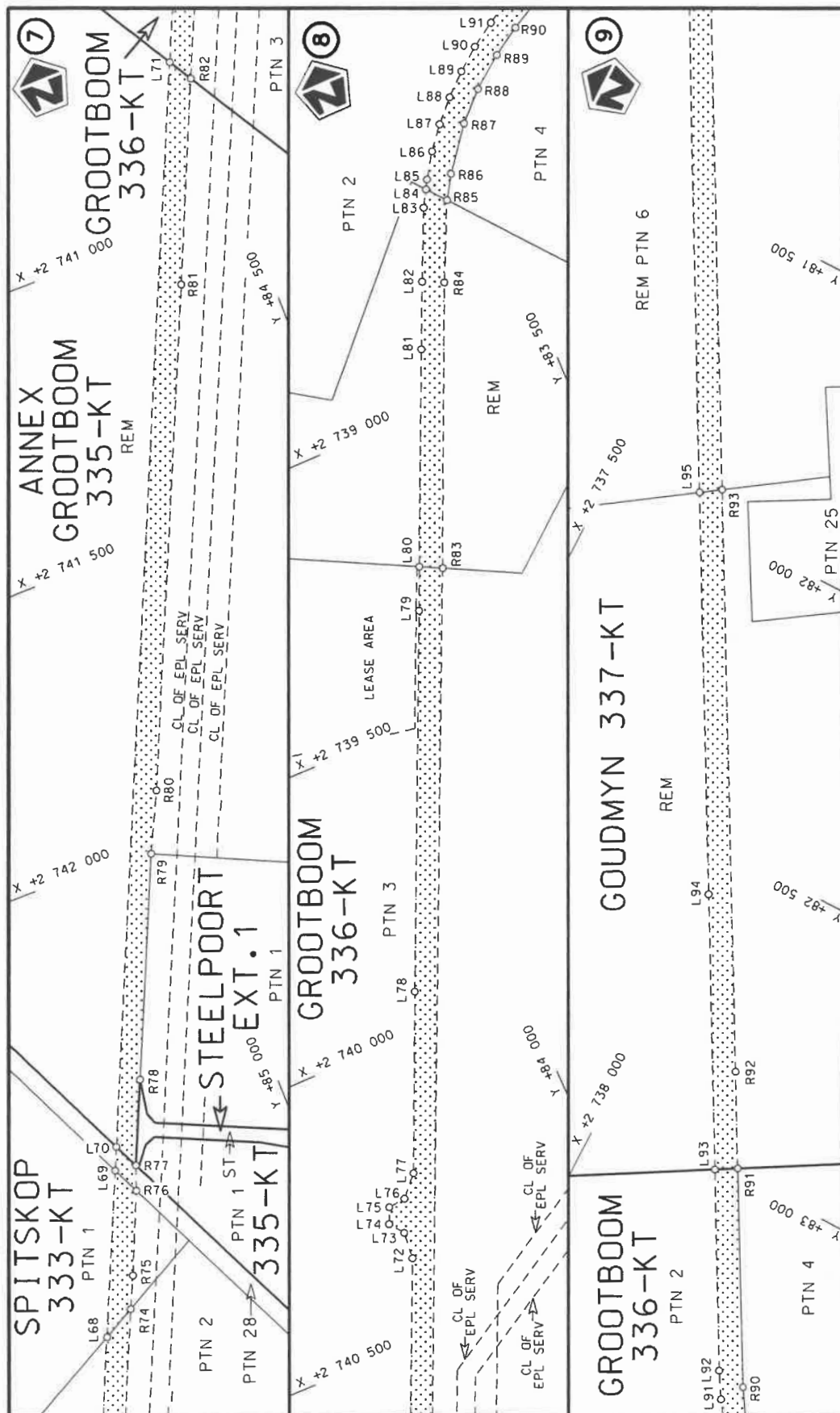



Die Suid Afrikaanse Nasionale Padagentskap MSB Bpk
The South African National Roads Agency SOC Ltd

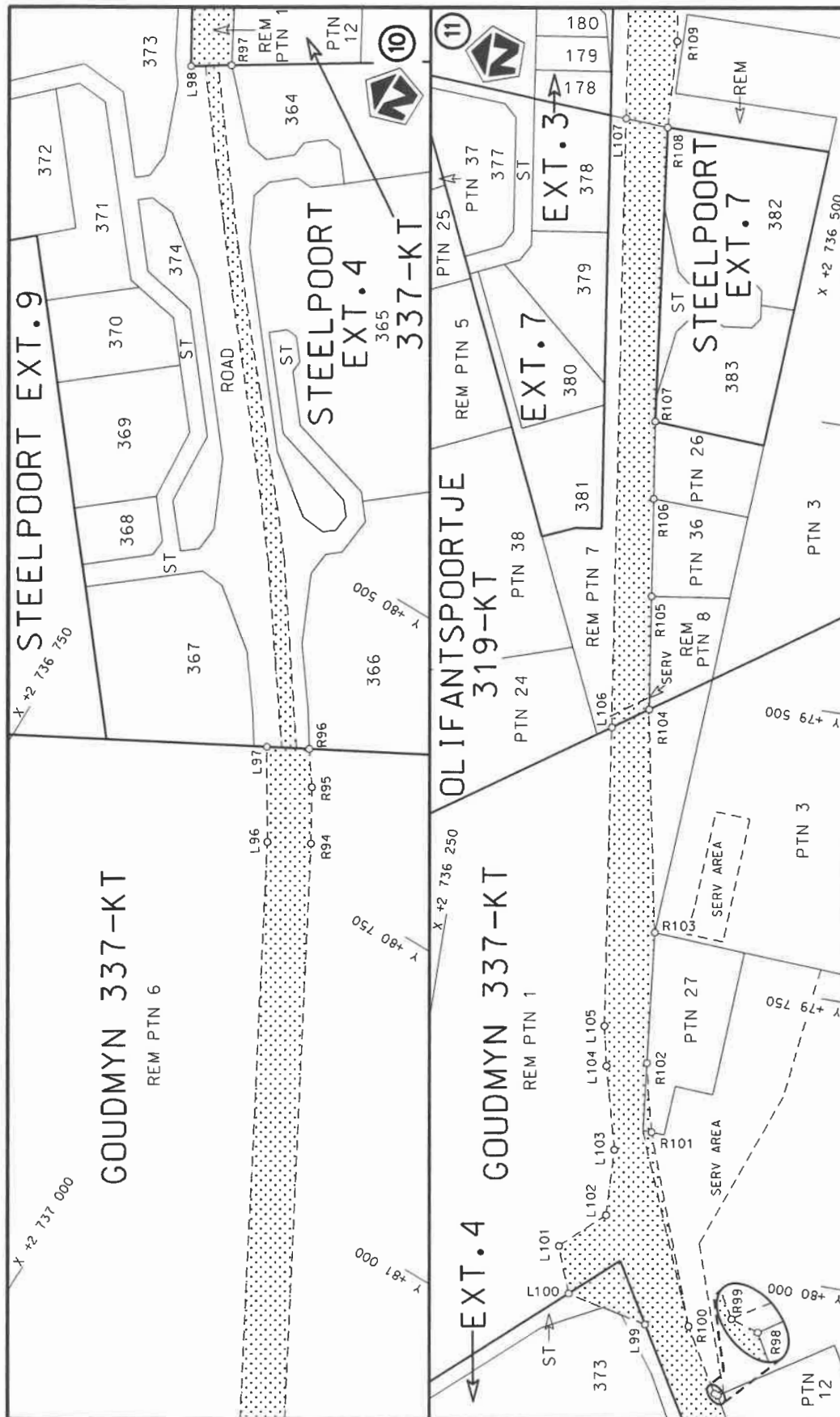
Die figuur getoon
The figure shown


stelt die padreserwe voor van 'n gedeelte
represents the road reserve of a portion
van Nasionale Roete R555 (of National Route R555)

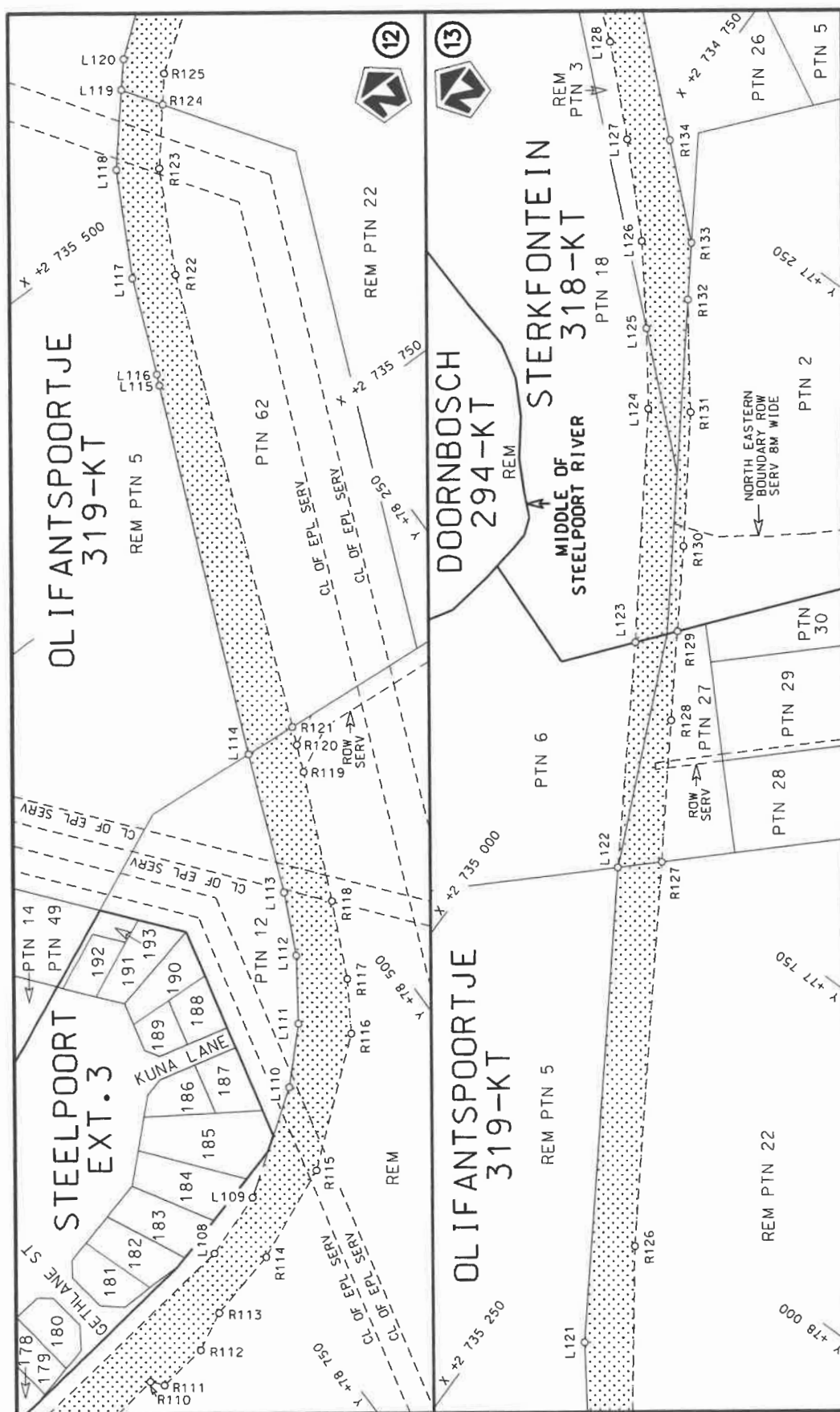
Vel Sheet 2 of 13
Plan P1184/19




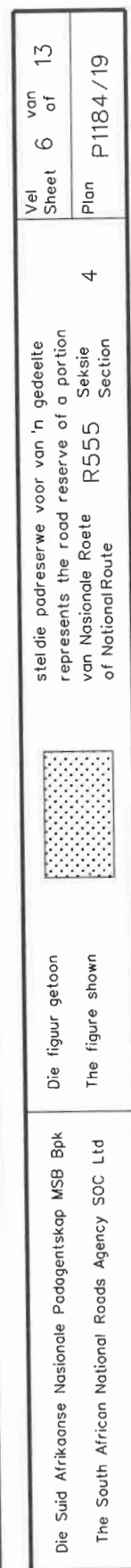
Die Suid Afrikaanse Nasionale Padagentskap MSB Bpk The South African National Roads Agency SOC Ltd	Die figuur getoon The figure shown		stelde podreserwe voor van 'n gedeelte represents the road reserve of a portion van Nasionale Roete R555 of National Route Section	Vel Sheet 3 of 13 Plan P1184/19
---	---------------------------------------	---	---	---------------------------------------

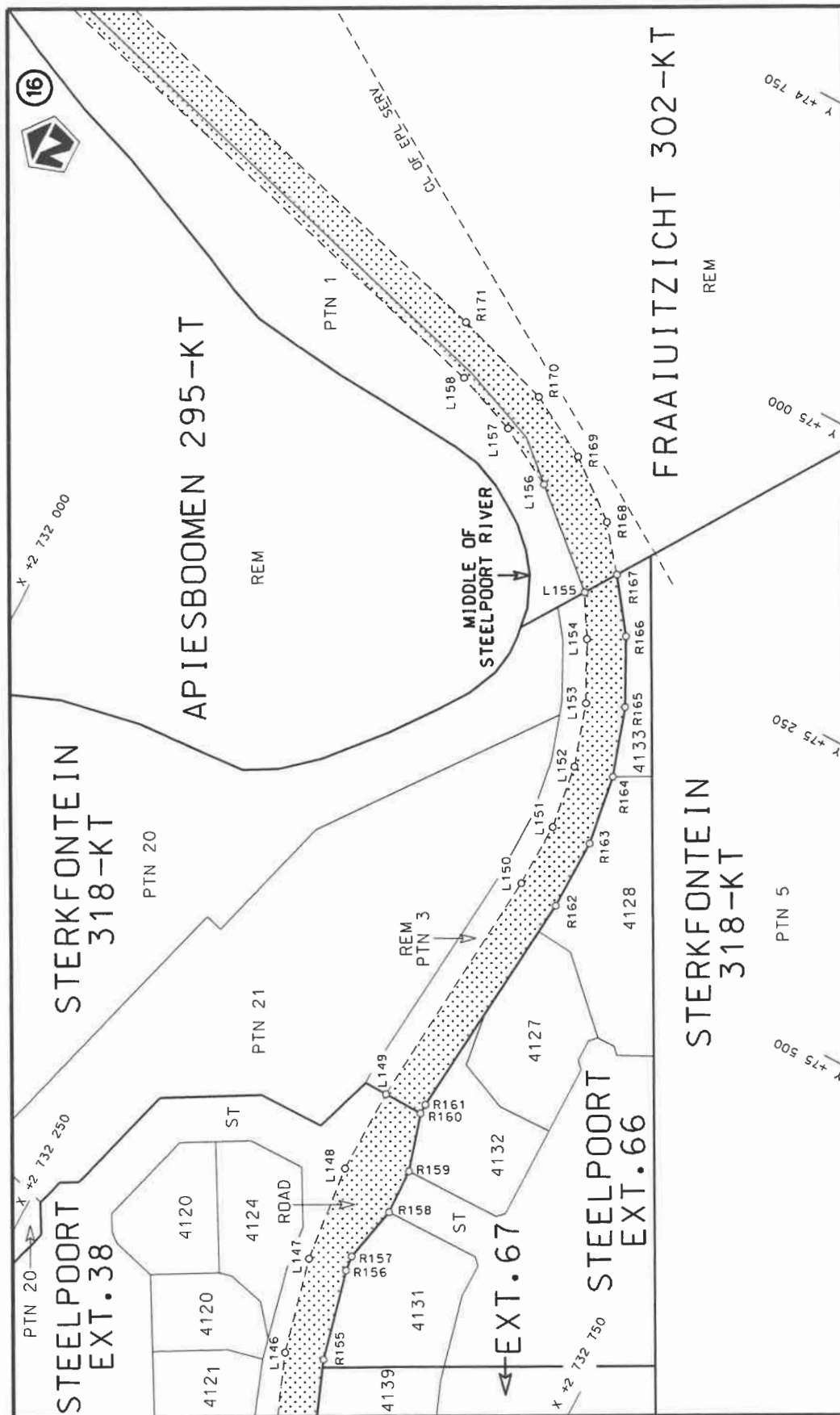



Die Suid Afrikaanse Nasionale Padagentskap MSB Bpk	Die figuur getoon		stel die padreserwe voor van 'n gedeelte represents the road reserve of a portion	Vel Sheet	4	13 of
The South African National Roads Agency SOC Ltd	The figure shown		van Nasionale Roete of National Route	R555 Seksie Section	Plan	P1184/19

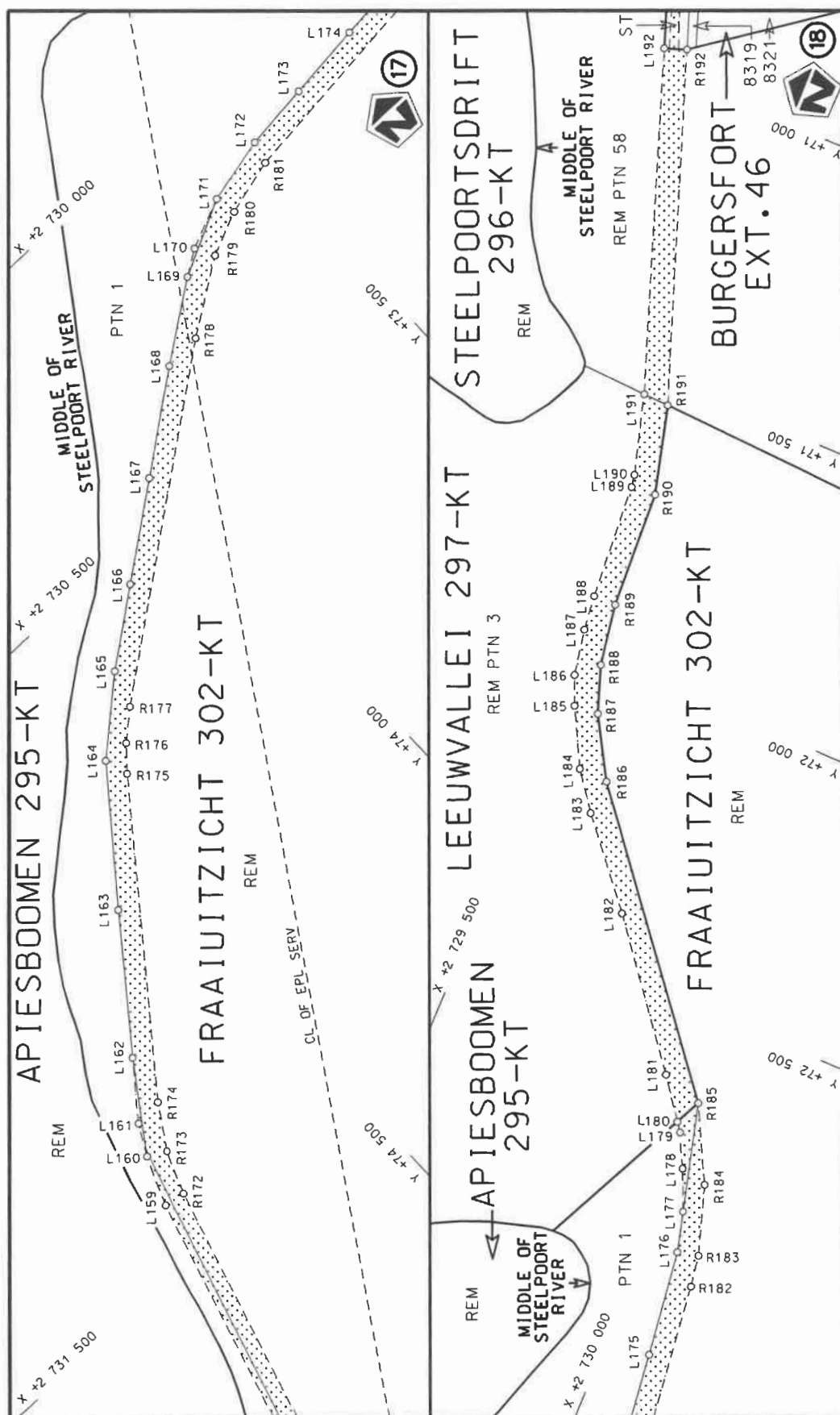



Die Suid Afrikaanse Nasionale Podagentskap MSB Bpk	Die figuur getoon		stel die padreserwe voor van 'n gedeelte represents the road reserve of a portion van Nasionale Roete R555 of National Route	Vel Sheet	5 of	13
The South African National Roads Agency SOC Ltd	The figure shown			4	Plan	P1184/19





Die Suid Afrikaanse Nasionale Padagentskap MSB Bpk The South African National Roads Agency SOC Ltd	Die figuur getoon The figure shown	 stel die padreserwe voor van 'n gedeelte represents the road reserve of a portion van Nasionale Roete R555 of National Route Section	Vel Sheet 7 of 13 Plan P1184/19
---	---------------------------------------	---	---------------------------------------



Die Suid Afrikaanse Nasionale Padagentskap MSB Bpk The South African National Roads Agency SOC Ltd	Die figuur getoon The figure shown	 steldie padreserwe voor van 'n gedeelte represents the road reserve of a portion van Nasionale Roete R555 Sektie of National Route of National Route	Vel Sheet 8 of 13 Plan P1184/19
---	---------------------------------------	--	---------------------------------------



PADRESERWE KOÖRDINATE / ROAD RESERVE CO-ORDINATES									
LINKERKANT/LEFT HAND SIDE					REGTERKANT/RIGHT HAND SIDE				
	Y	X	WG 31°			Y	X		
L1	96 536.37	2 752 136.97		R1	96 509.67	2 752 167.55			
L2	96 473.64	2 752 069.56		R2	96 467.39	2 752 123.57			
L3	96 334.65	2 751 875.11		R3	96 433.48	2 752 079.32			
L4	96 273.14	2 751 787.13		R4	96 240.64	2 751 804.68			
L5	96 219.73	2 751 723.85		R5	96 203.49	2 751 759.29			
L6	96 164.72	2 751 673.92		R6	96 147.23	2 751 710.72			
L7	96 127.91	2 751 645.90		R7	96 057.99	2 751 647.07			
L8	94 611.00	2 750 757.75		R8	94 588.51	2 750 788.53			
L9	94 257.61	2 750 551.01		R9	94 241.11	2 750 585.19			
L10	93 912.98	2 750 349.39		R10	93 895.03	2 750 382.71			
L11	93 859.96	2 750 315.39		R11	93 779.76	2 750 308.23			
L12	93 776.33	2 750 257.57		R12	93 650.86	2 750 220.02			
L13	93 636.41	2 750 160.85		R13	93 589.05	2 750 171.13			
L14	93 594.88	2 750 128.68		R14	93 513.16	2 750 105.23			
L15	93 471.97	2 750 021.92		R15	93 352.65	2 749 964.60			
L16	93 359.75	2 749 919.52		R16	93 138.93	2 749 764.88			
L17	93 161.56	2 749 738.69		R17	93 085.17	2 749 715.56			
L18	92 935.03	2 749 531.00		R18	92 998.70	2 749 639.72			
L19	92 838.84	2 749 442.80		R19	92 910.24	2 749 559.15			
L20	92 722.52	2 749 336.15		R20	92 819.43	2 749 476.22			
L21	92 306.06	2 748 953.16		R21	92 710.23	2 749 376.20			
L22	92 112.44	2 748 778.38		R22	92 688.03	2 749 355.87			
L23	91 979.18	2 748 657.03		R23	92 616.74	2 749 290.58			
L24	91 945.56	2 748 618.17		R24	92 435.82	2 749 128.37			
L25	91 884.85	2 748 539.05		R25	92 244.81	2 748 950.68			
L26	91 736.14	2 748 346.45		R26	92 162.46	2 748 874.07			
L27	91 621.04	2 748 196.75		R27	92 050.65	2 748 771.62			
L28	91 591.73	2 748 161.03		R28	91 932.20	2 748 655.48			
L29	91 554.42	2 748 123.38		R29	91 853.17	2 748 559.79			
L30	91 483.78	2 748 069.80		R30	91 565.73	2 748 185.68			
L31	91 233.85	2 747 880.23		R31	91 486.54	2 748 124.47			
L32	90 969.06	2 747 680.33		R32	91 447.57	2 748 094.25			
L33	90 901.43	2 747 619.25		R33	91 200.47	2 747 902.57			
L34	90 848.16	2 747 540.28		R34	91 016.30	2 747 766.69			
L35	90 812.32	2 747 473.94		R35	90 902.31	2 747 672.45			
L36	90 702.13	2 747 204.83		R36	90 902.60	2 747 689.70			
L37	90 699.00	2 747 162.88		R37	90 901.33	2 747 690.64			
L38	90 706.11	2 747 145.93		R38	90 813.90	2 747 561.02			
L39	90 685.64	2 747 095.95		R39	90 776.11	2 747 491.08			
L40	90 668.69	2 747 088.85		R40	90 574.70	2 746 999.16			
L41	90 641.50	2 747 056.76		R41	90 539.38	2 746 927.49			
L42	90 611.19	2 746 982.72		R42	90 497.86	2 746 874.02			
L43	90 573.46	2 746 906.16		R43	90 464.93	2 746 844.62			
L44	90 527.22	2 746 846.61		R44	90 191.20	2 746 610.15			
L45	90 491.26	2 746 814.51		R45	90 123.08	2 746 582.08			
L46	90 166.25	2 746 536.11		R46	90 107.13	2 746 581.53			
L47	89 493.30	2 745 960.86		R47	90 063.73	2 746 548.36			
L48	88 942.27	2 745 489.96		R48	90 062.32	2 746 530.03			
L49	88 916.35	2 745 442.77		R49	90 024.84	2 746 468.22			
L50	88 914.28	2 745 421.65		R50	89 473.79	2 745 996.80			
L51	88 883.38	2 745 396.26		R51	88 916.88	2 745 520.87			
Vel Sheet 10					Van of 13		P1184/19		

PADRESERWE KOÖRDINATE / ROAD RESERVE CO-ORDINATES									
LINKERKANT/LEFT HAND SIDE					REGTERKANT/RIGHT HAND SIDE				
	Y		X	WG 31°		Y		X	
L52	88 862.27	2	745	398.32	R52	88 865.55	2	745	504.57
L53	88 810.28	2	745	381.48	R53	88 844.44	2	745	506.63
L54	88 636.07	2	745	250.40	R54	88 813.53	2	745	481.24
L55	88 550.82	2	745	190.86	R55	88 811.47	2	745	460.12
L56	88 349.15	2	745	060.55	R56	88 785.54	2	745	412.92
L57	88 219.32	2	744	984.18	R57	88 612.58	2	745	282.79
L58	88 190.20	2	744	969.55	R58	88 528.51	2	745	224.06
L59	86 798.81	2	744	206.50	R59	88 328.14	2	745	094.61
L60	86 025.56	2	743	783.36	R60	88 200.22	2	745	019.35
L61	85 969.24	2	743	749.95	R61	88 172.16	2	745	002.80
L62	85 914.84	2	743	706.21	R62	87 303.18	2	744	528.18
L63	85 877.50	2	743	670.68	R63	86 883.94	2	744	297.31
L64	85 830.05	2	743	614.16	R64	86 780.07	2	744	241.05
L65	85 799.93	2	743	568.48	R65	86 002.42	2	743	815.76
L66	85 786.59	2	743	544.66	R66	85 967.39	2	743	795.23
L67	85 750.33	2	743	468.90	R67	85 928.94	2	743	768.70
L68	85 442.50	2	742	777.63	R68	85 885.76	2	743	733.52
L69	85 322.81	2	742	509.33	R69	85 844.99	2	743	693.46
L70	85 305.67	2	742	470.91	R70	85 812.64	2	743	656.38
L71	84 526.68	2	740	725.62	R71	85 767.13	2	743	591.05
L72	84 363.97	2	740	362.51	R72	85 747.55	2	743	556.41
L73	84 359.40	2	740	315.49	R73	85 727.65	2	743	512.68
L74	84 377.88	2	740	291.21	R74	85 385.99	2	742	746.97
L75	84 365.67	2	740	263.81	R75	85 360.22	2	742	692.38
L76	84 334.97	2	740	260.68	R76	85 300.90	2	742	556.07
L77	84 302.64	2	740	225.60	R77	85 285.45	2	742	514.17
L78	84 173.06	2	739	932.82	R78	85 223.75	2	742	375.88
L79	83 899.38	2	739	320.33	R79	85 061.43	2	742	011.87
L80	83 868.77	2	739	249.62	R80	85 012.04	2	741	910.91
L81	83 712.93	2	738	900.07	R81	84 648.79	2	741	096.88
L82	83 664.39	2	738	791.47	R82	84 502.73	2	740	765.72
L83	83 610.51	2	738	673.14	R83	83 831.91	2	739	268.35
L84	83 594.37	2	738	645.01	R84	83 629.37	2	738	808.24
L85	83 585.72	2	738	629.92	R85	83 567.87	2	738	677.42
L86	83 557.76	2	738	588.26	R86	83 543.23	2	738	637.50
L87	83 526.47	2	738	549.82	R87	83 487.24	2	738	565.41
L88	83 491.93	2	738	513.19	R88	83 440.57	2	738	519.83
L89	83 454.91	2	738	479.83	R89	83 386.89	2	738	478.17
L90	83 415.89	2	738	449.38	R90	83 337.24	2	738	447.27
L91	83 373.36	2	738	422.05	R91	82 998.45	2	738	262.42
L92	83 329.87	2	738	396.30	R92	82 847.64	2	738	180.74
L93	83 018.58	2	738	227.31	R93	81 948.00	2	737	689.90
L94	82 591.58	2	737	995.22	R94	80 707.92	2	737	013.32
L95	81 970.65	2	737	656.65	R95	80 665.19	2	736	988.29
L96	80 726.54	2	736	979.77	R96	80 637.94	2	736	968.79
L97	80 655.74	2	736	936.05	R97	80 161.14	2	736	599.14
L98	80 180.13	2	736	569.22	R98	80 108.94	2	736	570.36
L99	80 057.51	2	736	497.59	R99	80 107.91	2	736	567.32
L100	80 041.08	2	736	427.33	R100	80 052.75	2	736	535.62
L101	80 000.82	2	736	412.62	R101	79 889.55	2	736	476.74
L102	79 967.63	2	736	448.99	R102	79 830.21	2	736	463.07
					<div> <div>Vel Sheet</div> <div>11</div> <div>Van of</div> <div>13</div> <div>P1184/19</div> </div>				

PADRESERWE KOÖRDINATE / ROAD RESERVE CO-ORDINATES							
LINKERKANT/LEFT HAND SIDE				REGTERKANT/RIGHT HAND SIDE			
	Y	X	WG 31°		Y	X	
L103	79 909.67	2 736 447.03		R103	79 715.88	2 736 451.79	
L104	79 838.03	2 736 428.75		R104	79 523.17	2 736 416.09	
L105	79 803.57	2 736 421.35		R105	79 424.76	2 736 402.44	
L106	79 543.76	2 736 386.30		R106	79 340.01	2 736 390.70	
L107	79 014.60	2 736 314.15		R107	79 272.85	2 736 381.39	
L108	78 780.77	2 736 282.27		R108	79 016.74	2 736 351.10	
L109	78 724.43	2 736 262.20		R109	78 940.81	2 736 347.61	
L110	78 640.76	2 736 202.95		R110	78 893.89	2 736 340.09	
L111	78 600.77	2 736 162.47		R111	78 885.83	2 736 350.10	
L112	78 566.41	2 736 112.80		R112	78 841.48	2 736 344.14	
L113	78 541.89	2 736 061.39		R113	78 808.85	2 736 327.10	
L114	78 494.21	2 735 944.61		R114	78 746.35	2 736 311.68	
L115	78 363.21	2 735 636.02		R115	78 665.01	2 736 276.19	
L116	78 359.23	2 735 626.77		R116	78 568.28	2 736 196.94	
L117	78 326.26	2 735 545.60		R117	78 542.37	2 736 155.90	
L118	78 280.80	2 735 460.15		R118	78 512.14	2 736 092.53	
L119	78 235.31	2 735 406.07		R119	78 464.27	2 735 985.86	
L120	78 217.63	2 735 385.33		R120	78 454.82	2 735 963.03	
L121	78 138.24	2 735 322.47		R121	78 448.75	2 735 948.11	
L122	77 780.92	2 735 098.25		R122	78 293.30	2 735 565.77	
L123	77 610.96	2 734 993.35		R123	78 249.17	2 735 481.61	
L124	77 437.27	2 734 880.53		R124	78 213.53	2 735 438.10	
L125	77 381.12	2 734 837.40		R125	78 196.04	2 735 416.76	
L126	77 321.01	2 734 788.54		R126	78 042.79	2 735 308.02	
L127	77 256.09	2 734 725.20		R127	77 754.07	2 735 126.71	
L128	77 195.65	2 734 662.08		R128	77 647.70	2 735 059.45	
L129	77 138.38	2 734 590.33		R129	77 581.10	2 735 017.77	
L130	77 086.42	2 734 516.77		R130	77 516.83	2 734 977.54	
L131	77 038.27	2 734 439.08		R131	77 417.39	2 734 912.83	
L132	76 995.14	2 734 358.80		R132	77 338.65	2 734 852.14	
L133	76 958.81	2 734 277.98		R133	77 296.40	2 734 825.17	
L134	76 931.81	2 734 215.07		R134	77 234.56	2 734 756.03	
L135	76 867.40	2 734 065.02		R135	77 117.20	2 734 624.78	
L136	76 717.41	2 733 709.66		R136	76 996.96	2 734 448.15	
L137	76 637.16	2 733 518.13		R137	76 941.07	2 734 339.89	
L138	76 517.68	2 733 242.68		R138	76 894.99	2 734 230.60	
L139	76 462.05	2 733 112.40		R139	76 861.33	2 734 150.82	
L140	76 354.67	2 732 860.93		R140	76 839.70	2 734 099.53	
L141	76 299.24	2 732 759.65		R141	76 715.72	2 733 805.58	
L142	76 162.00	2 732 617.57		R142	76 648.73	2 733 646.73	
L143	76 129.34	2 732 596.12		R143	76 640.09	2 733 626.24	
L144	76 106.76	2 732 581.29		R144	76 484.27	2 733 256.77	
L145	76 031.37	2 732 540.89		R145	76 429.22	2 733 126.25	
L146	75 951.36	2 732 510.65		R146	76 371.04	2 732 988.30	
L147	75 868.10	2 732 491.08		R147	76 341.52	2 732 918.31	
L148	75 783.01	2 732 482.52		R148	76 308.01	2 732 844.48	
L149	75 708.51	2 732 484.14		R149	76 265.17	2 732 775.64	
L150	75 488.55	2 732 503.45		R150	76 213.74	2 732 712.97	
L151	75 432.11	2 732 504.97		R151	76 154.58	2 732 657.52	
L152	75 376.07	2 732 497.28		R152	76 108.84	2 732 624.69	
L153	75 321.98	2 732 480.54		R153	76 088.71	2 732 610.25	
				Vel Sheet	12	Van of	13
				P1184/19			

PADRESERVE KOÖRDINATE / ROAD RESERVE CO-ORDINATES									
LINKERKANT/LEFT HAND SIDE					REGTERKANT/RIGHT HAND SIDE				
	Y	X	WG 31°		Y	X			
L154	75 271.31	2 732 455.20		R154	76 017.25	2 732 571.96			
L155	75 235.97	2 732 434.33		R155	75 941.40	2 732 543.29			
L156	75 168.20	2 732 359.00		R156	75 862.48	2 732 524.74			
L157	75 138.60	2 732 308.53		R157	75 849.25	2 732 523.41			
L158	75 116.99	2 732 254.14		R158	75 799.50	2 732 534.49			
L159	74 874.10	2 731 399.35		R159	75 759.50	2 732 533.31			
L160	74 840.29	2 731 314.65		R160	75 709.52	2 732 518.82			
L161	74 811.75	2 731 261.66		R161	75 700.76	2 732 519.09			
L162	74 740.99	2 731 169.10		R162	75 492.44	2 732 539.07			
L163	74 582.81	2 730 960.39		R163	75 430.19	2 732 540.04			
L164	74 420.95	2 730 751.97		R164	75 368.58	2 732 531.06			
L165	74 302.00	2 730 646.88		R165	75 309.20	2 732 512.36			
L166	74 178.20	2 730 552.63		R166	75 253.56	2 732 484.43			
L167	74 026.62	2 730 437.53		R167	75 209.06	2 732 452.28			
L168	73 867.15	2 730 316.30		R168	75 171.82	2 732 423.25			
L169	73 737.58	2 730 222.66		R169	75 132.62	2 732 374.36			
L170	73 694.31	2 730 194.14		R170	75 101.85	2 732 319.65			
L171	73 606.61	2 730 156.41		R171	75 072.91	2 732 233.12			
L172	73 490.33	2 730 127.99		R172	74 836.69	2 731 405.30			
L173	73 373.38	2 730 113.71		R173	74 807.71	2 731 330.79			
L174	73 238.07	2 730 097.85		R174	74 760.71	2 731 256.43			
L175	73 069.34	2 730 078.01		R175	74 407.74	2 730 793.84			
L176	72 882.98	2 730 053.55		R176	74 372.39	2 730 752.88			
L177	72 813.09	2 730 035.19		R177	74 323.92	2 730 710.41			
L178	72 742.09	2 730 005.48		R178	73 799.33	2 730 311.86			
L179	72 686.07	2 729 976.66		R179	73 675.66	2 730 227.76			
L180	72 670.49	2 729 964.82		R180	73 598.87	2 730 193.88			
L181	72 600.22	2 729 914.65		R181	73 500.90	2 730 166.95			
L182	72 367.57	2 729 734.22		R182	72 928.52	2 730 099.29			
L183	72 225.60	2 729 615.41		R183	72 873.24	2 730 090.14			
L184	72 161.07	2 729 567.74		R184	72 753.62	2 730 052.03			
L185	72 062.04	2 729 516.53		R185	72 626.19	2 729 986.08			
L186	72 012.11	2 729 495.59		R186	72 164.74	2 729 619.65			
L187	71 931.70	2 729 480.50		R187	72 060.20	2 729 559.35			
L188	71 870.55	2 729 473.90		R188	71 978.66	2 729 531.15			
L189	71 668.01	2 729 460.41		R189	71 871.20	2 729 513.41			
L190	71 646.17	2 729 456.65		R190	71 665.11	2 729 503.08			
L191	71 509.32	2 729 417.57		R191	71 511.62	2 729 462.59			
L192	70 934.74	2 729 214.28		R192	70 921.28	2 729 251.94			