
GOVERNMENT NOTICES • GOEWERMENTSKENNISGEWINGS

DEPARTMENT OF TRANSPORT

NO. 6417

11 July 2025

**THE SOUTH AFRICAN NATIONAL ROADS
AGENCY SOC LIMITED**Registration No: 1998/009584/30

DECLARATION OF PARTS OF EXISTING PROVINCIAL ROADS K157 SECTION 1 AND P40 SECTION 1 AS NATIONAL ROAD R21 SECTION 1 AND DECLARATION AMENDMENT OF NATIONAL ROAD R21 SECTION 1

- i) By virtue of Section 40(1)(a) of The South African National Roads Agency Limited and National Roads Act, 1998 (Act No. 7 of 1998), I hereby declare parts of Provincial Roads K157 Section 1 and P40 Section 1, being:
- a. the part of figure S11, S12, S13, S14, S15, S16, S17, S50, S51, S52, S53, S54, R65, R66, R67, R77, R78, S55, S56, S71, S72, S73, S74, S75, S76 up to a point in line with S11 as declared by Provincial Notice No. 11 of 2001,
 - b. the part of figure R89, R90, R91, R92, R93, S59, S60, S61, S62, S63, S64, S65, S66, S67, S68, S69, S70, R89 as declared by Provincial Notice No. 11 of 2001,
 - c. the part of figure XL48, XL49, XL50, XL51, XL52, XL53, R3, R4, R5, R6, R6A, L68, L49, L48, XL48 as declared by Provincial Notice No. 11 of 2001,
 - d. the part of figure XL77, XL78, XL79, XL80, XL80A, XL82N, L88A, L88, L87, L86, L85, L84, L83, L42, L41, XL76D, XL77 as declared by Provincial Notice No. 11 of 2001,
 - e. the part of figure XL76D, L41, L42, L83, S70, S71 as declared by Provincial Notice No. 11 of 2001, R7, R6, R5, R4 as declared by Provincial Notice No. 1721 of 1978,
 - f. the part of figure R90 as declared by National Declaration No. 555 of 2015, R76, R77, R78, R79 as declared by Provincial Notice No. 924 of 1967,

as part of National Road R21 Section 1.

- ii) By virtue of Section 40 (1)(b) of The South African National Roads Agency Limited and National Roads Act, 1998 (Act No. 7 of 1998), I hereby amend Declaration No.'s 555 of 2015 and 302 of 2018 by substituting it in its entirety, with the accompanying sheets 1 to 20 of Plan No. P1193/20.

(National Road R21 Section 1: Rietfontein Interchange – Olifantsfontein Interchange)


MINISTER OF TRANSPORT

DEPARTEMENT VAN VERVOER

NO. 6417

11 Julie 2025

**DIE SUID-AFRIKAANSE NASIONALE
PADAGENTSAP MSB BEPERK**

Registrasie No: 1998/009584/30

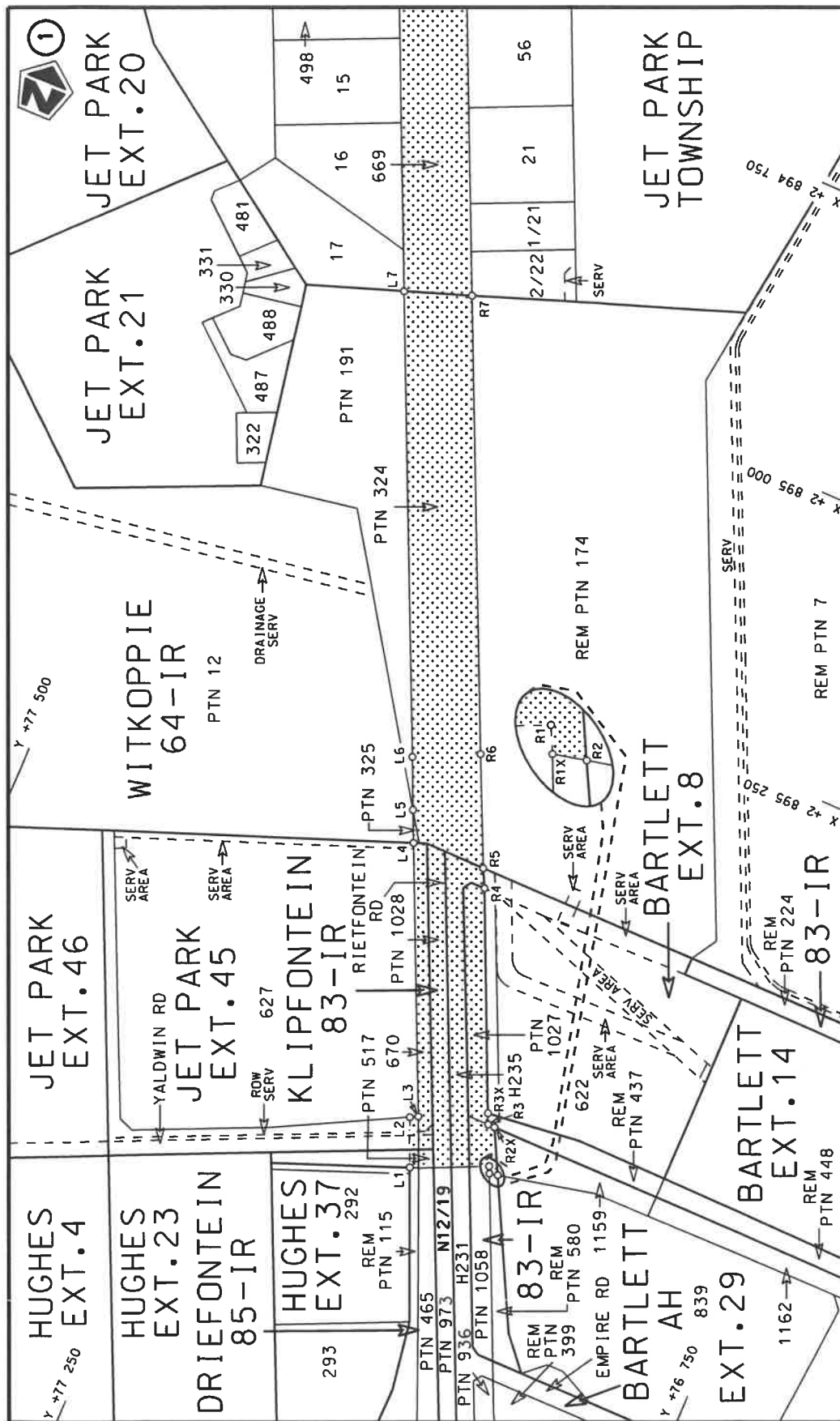
**VERKLARING VAN GEDEELTES VAN BESTAANDE PROVINSIALE PAAIE K157 SEKSIE 1 EN P40
SEKSIE 1 AS NASIONALE PAD R21 SEKSIE 1 EN DIE VERKLARING WYSIGING VAN NASIONALE
PAD R21 SEKSIE 1**

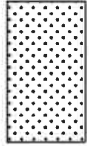
- i) Kragtens Artikel 40(1)(a) van die Wet op die Suid-Afrikaanse Nasionale Padagentskap Beperk en op Nasionale Paaie, Wet 1998 (Wet No. 7 van 1998), verklaar ek hiermee gedeeltes van Provinsiale Paaie K157 Seksie 1 en P40 Seksie 1, synde:
- a. die gedeelte van figuur S11, S12, S13, S14, S15, S16, S17, S50, S51, S52, S53, S54, R65, R66, R67, R77, R78, S55, S56, S71, S72, S73, S74, S75, S76 tot by 'n punt in lyn met S11 soos verklaar in Administratiewe kennisgewing No. 11 van 2001,
 - b. die gedeelte van figuur R89, R90, R91, R92, R93, S59, S60, S61, S62, S63, S64, S65, S66, S67, S68, S69, S70, R89 soos verklaar in Administratiewe Kennisgewing No. 11 van 2001,
 - c. die gedeelte van figuur XL48, XL49, XL50, XL51, XL52, XL53, R3, R4, R5, R6, R6A, L68, L49, L48, XL48 soos verklaar in Administratiewe Kennisgewing No. 11 van 2001,
 - d. die gedeelte van figuur XL77, XL78, XL79, XL80, XL80A, XL82N, L88A, L88, L87, L86, L85, L84, L83, L42, L41, XL76D, XL77 soos verklaar in Administratiewe Kennisgewing No. 11 van 2001,
 - e. die gedeelte van figuur XL76D, L41, L42, L83, S70, S71 soos verklaar in Administratiewe Kennisgewing No. 11 van 2001, R7, R6, R5, R4 soos verklaar in Administratiewe Kennisgewing No. 1721 van 1978,
 - f. die gedeelte van figuur R90 soos verklaar in Nasionale Verklaring No. 555 van 2015, R76, R77, R78, R79 soos verklaar in Administratiewe Kennisgewing No. 924 van 1967,

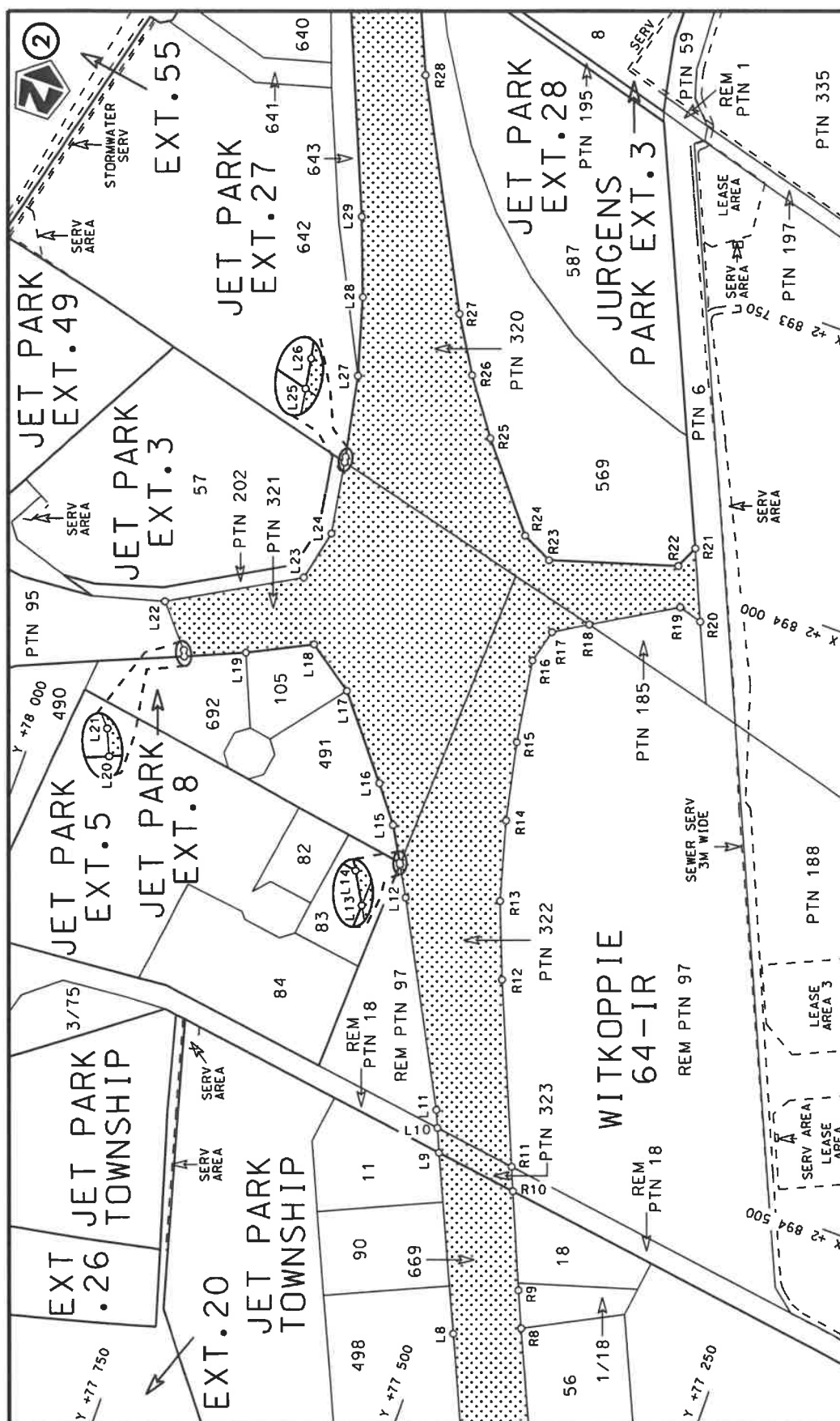
as deel van Nasionale Pad R21 Seksie 1.


- ii) Kragtens Artikel 40(1)(b) van die Wet op die Suid-Afrikaanse Nasionale Padagentskap Beperk en op Nasionale Paaie, 1998 (Wet No. 7 van 1998), wysig ek hiermee Verklaring No.'s 555 van 2015 en 302 van 2018 deur dit in sy geheel te vervang, met bygaande velle 1 tot 20 van Plan No. P1193/20.

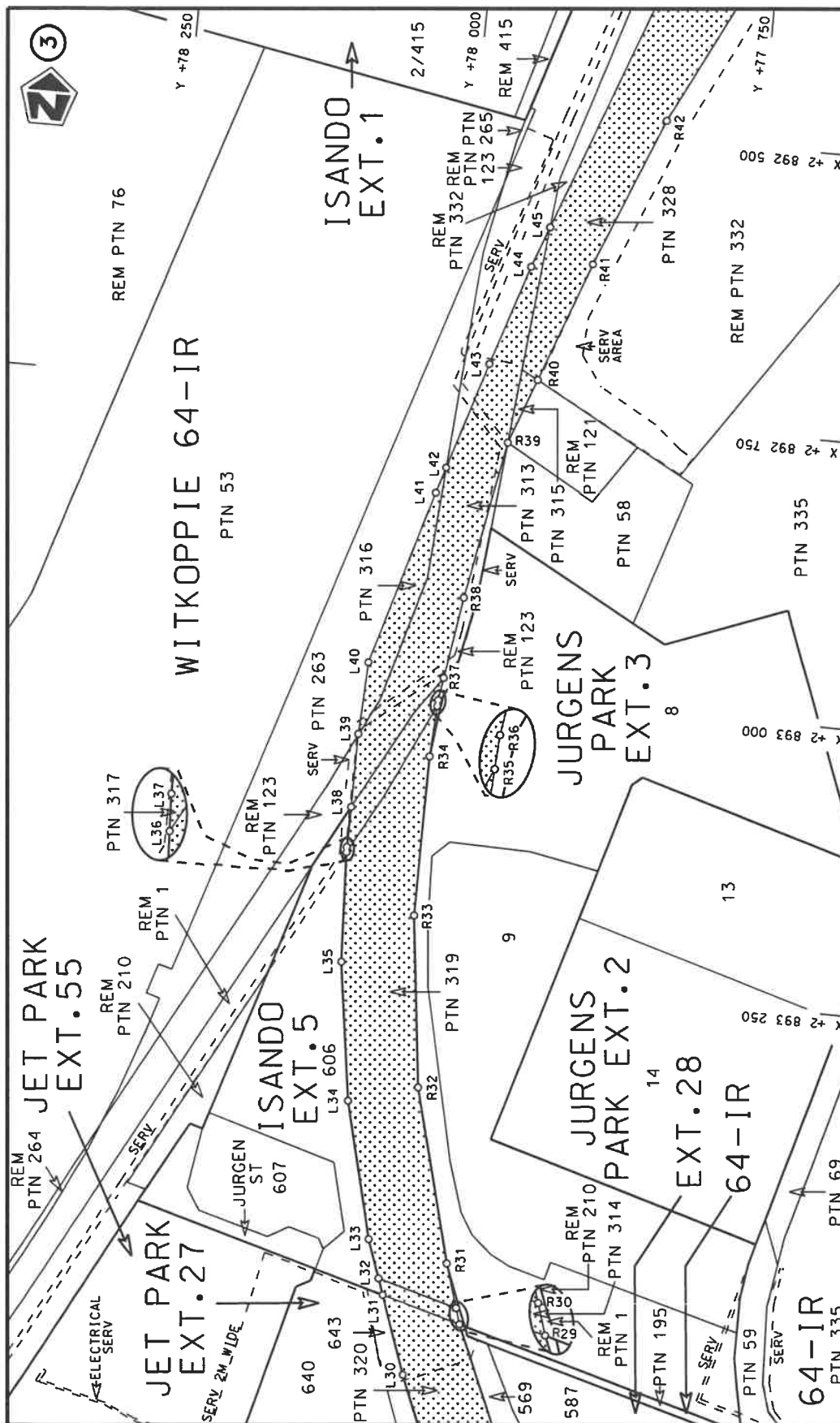
(Nasionale Pad R21 Seksie 1: Rietfontein Wisselaar – Olifantsfontein Wisselaar)
MINISTER VAN VERVOER



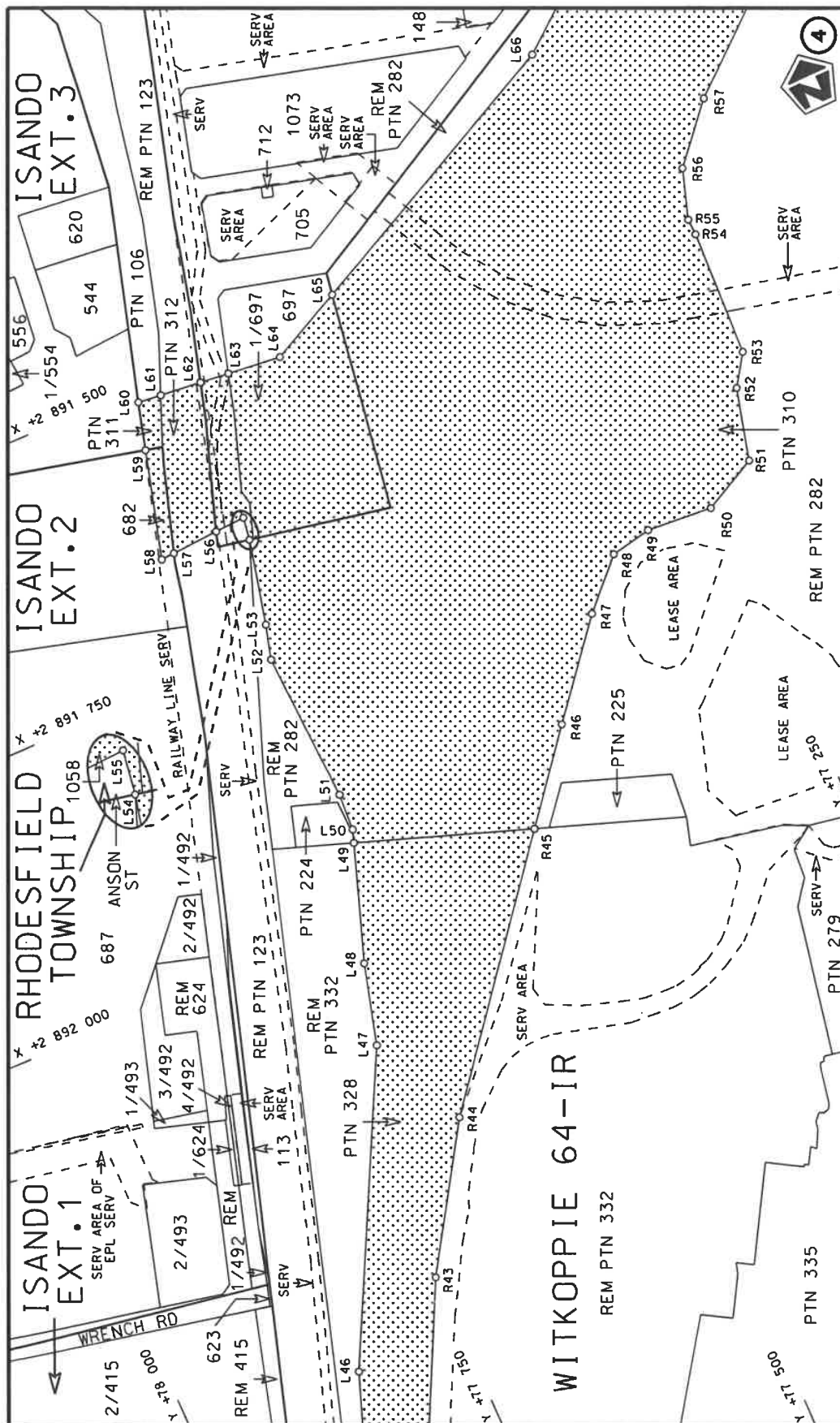
Die Suid Afrikaanse Nasionale Padagentskap MSB Bpk The South African National Roads Agency SOC Ltd	Die figuur getoon The figure shown		steldie padreserwe voor van 'n gedeelte represents the road reserve of a portion van Nasionale Roete R21 of National Route	1	Plan P1193/20
Vel Sheet 1 of 20	1	Section	20	1	20

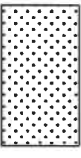


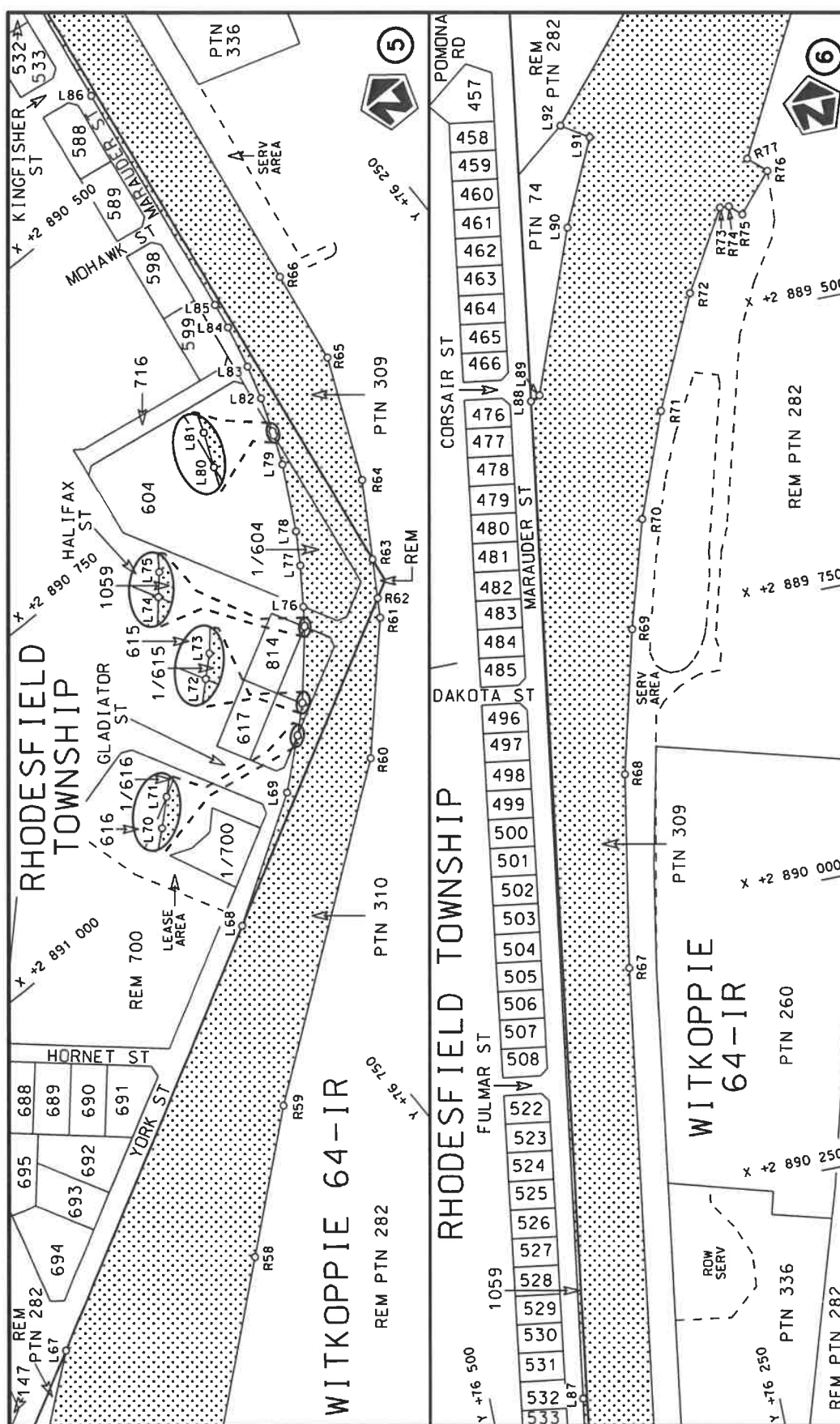
Die Suid Afrikaanse Nasionale Padagentskap MSB Bpk The South African National Roads Agency SOC Ltd	Die figuur getoon The figure shown		stel die padreserwe voor van 'n gedeelte represents the road reserve of a portion van Nasionale Roete of National Route	1	Vel Sheet 2 of 20
				Plan	P1193/20




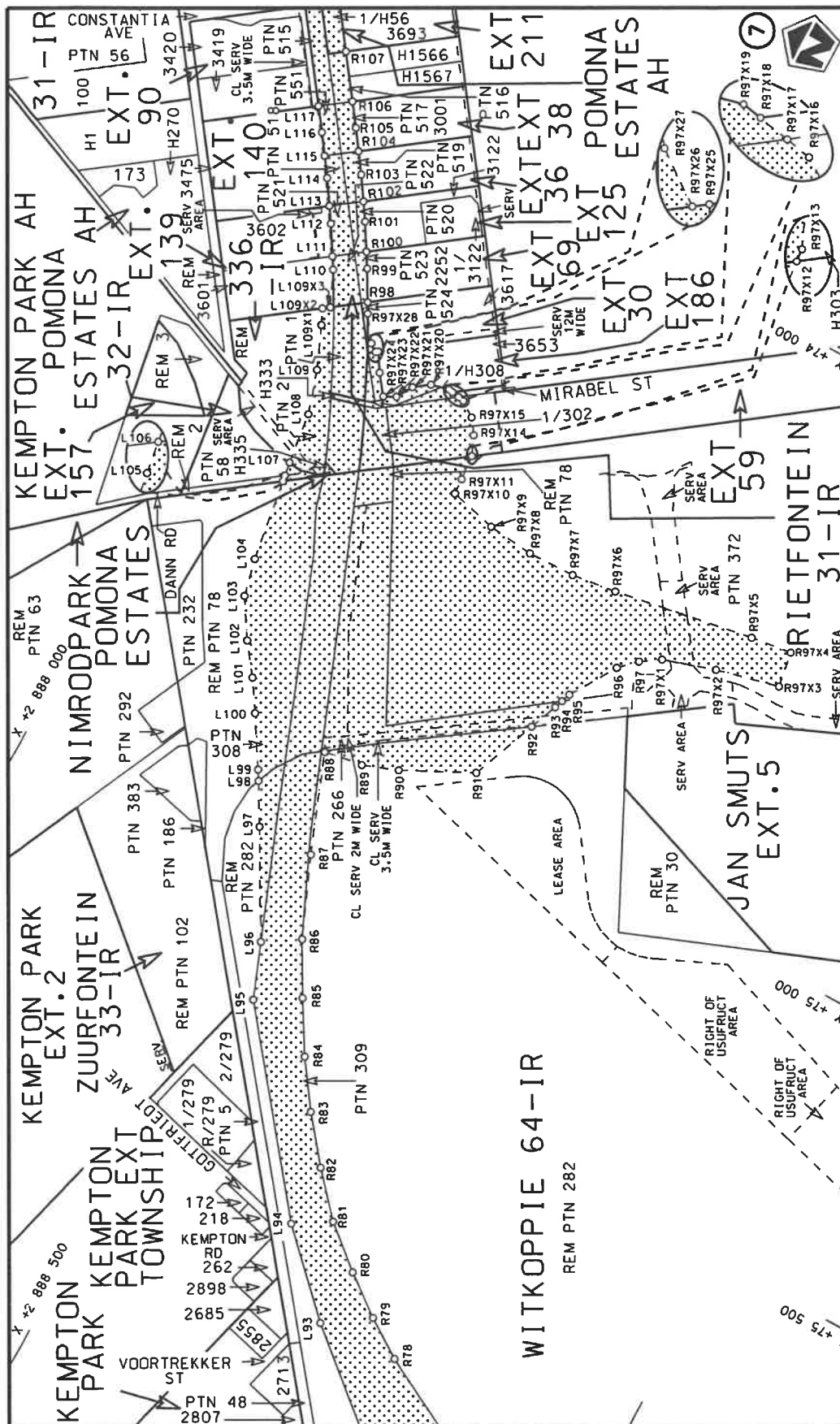
Die Suid Afrikaanse Nasionale Podagogskep MSB Bpk The South African National Roads Agency SOC Ltd	Die figuur getoon The figure shown	stel die padreserwe voor van 'n gedeelte represents the road reserve of a portion van Nasionale Roete R21 of National Route	1	3 of 20	Plan P1193/20
--	---------------------------------------	--	---	---------	---------------

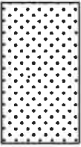


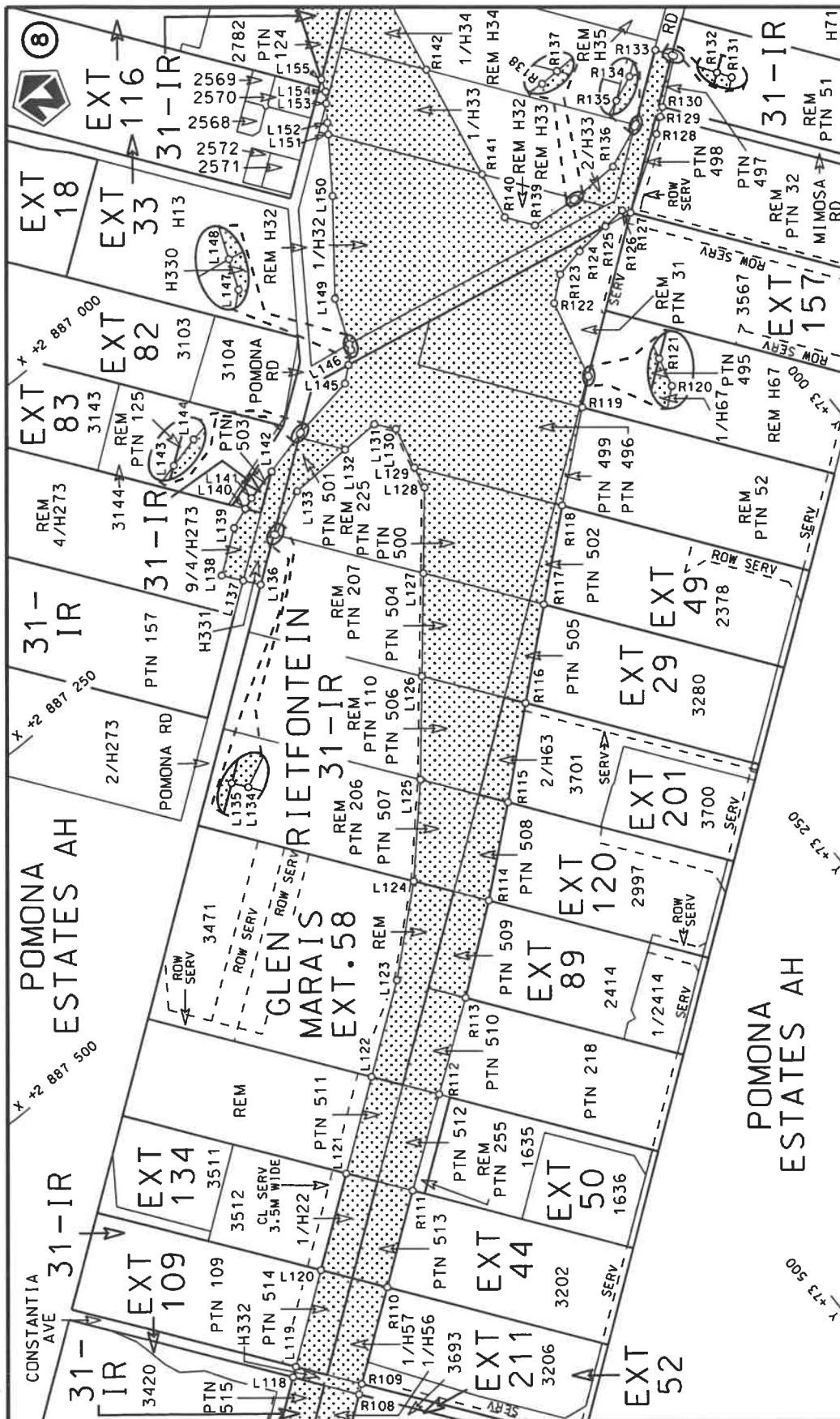
Die Suid Afrikaanse Nasionale Padagentskap MSB Bpk The South African National Roads Agency SOC Ltd	Die figuur getoon The figure shown	 stel die padreserwe voor van 'n gedeelte represents the road reserve of a portion van Nasionale Roete R21 of National Route	Vel Sheet 4 of 20 Plan P1193/20
---	---------------------------------------	--	--



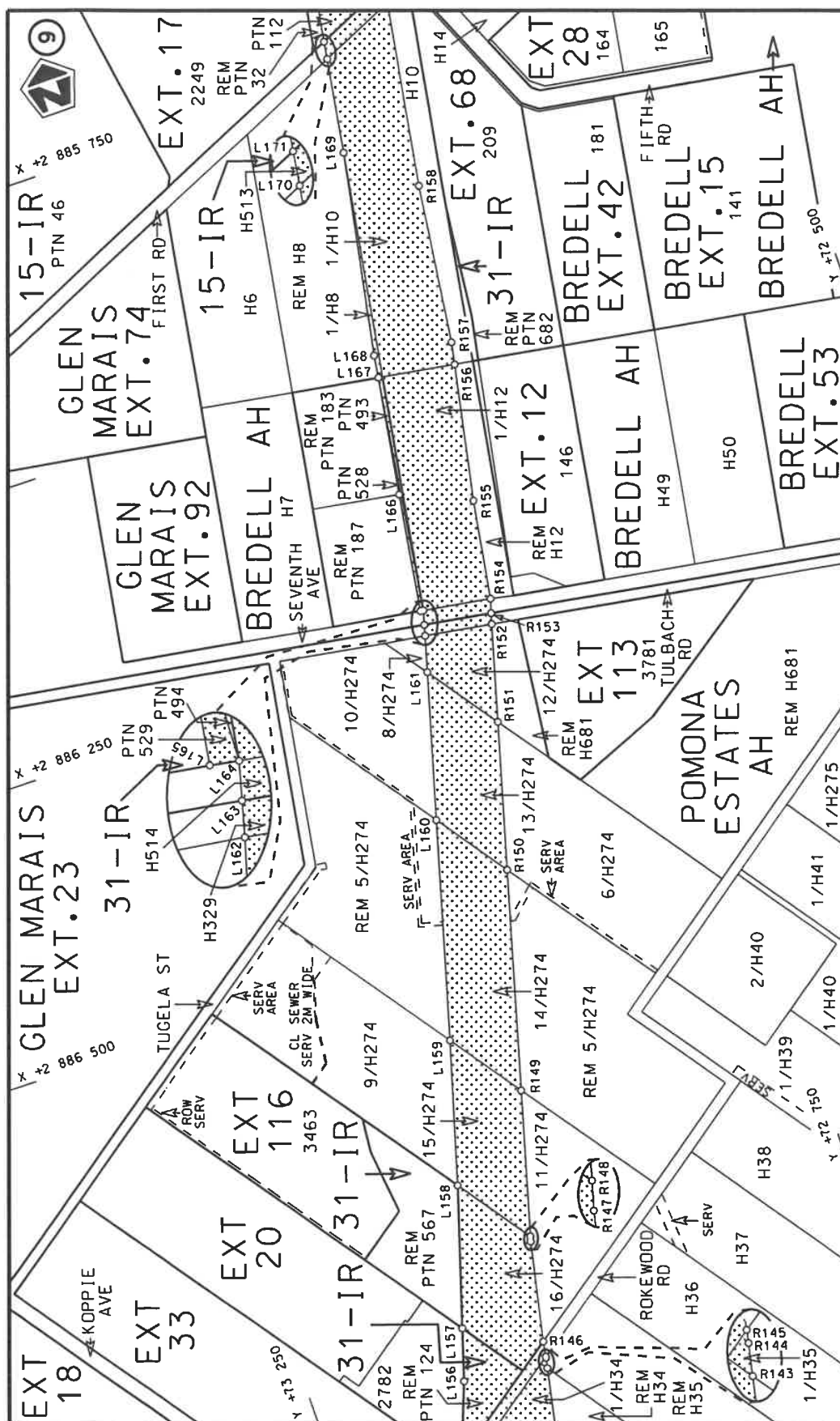
Die Suid Afrikaanse Nasionale Padagentskap WSB Bpk	Die figuur getoon		stel die podreserwe voor van 'n gedeelte represents the road reserve of a portion van Nasionale Roete R21 of National Route	Vel Sheet	5 of	20
The South African National Roads Agency SOC Ltd	The figure shown			1	Plan	P1193/20




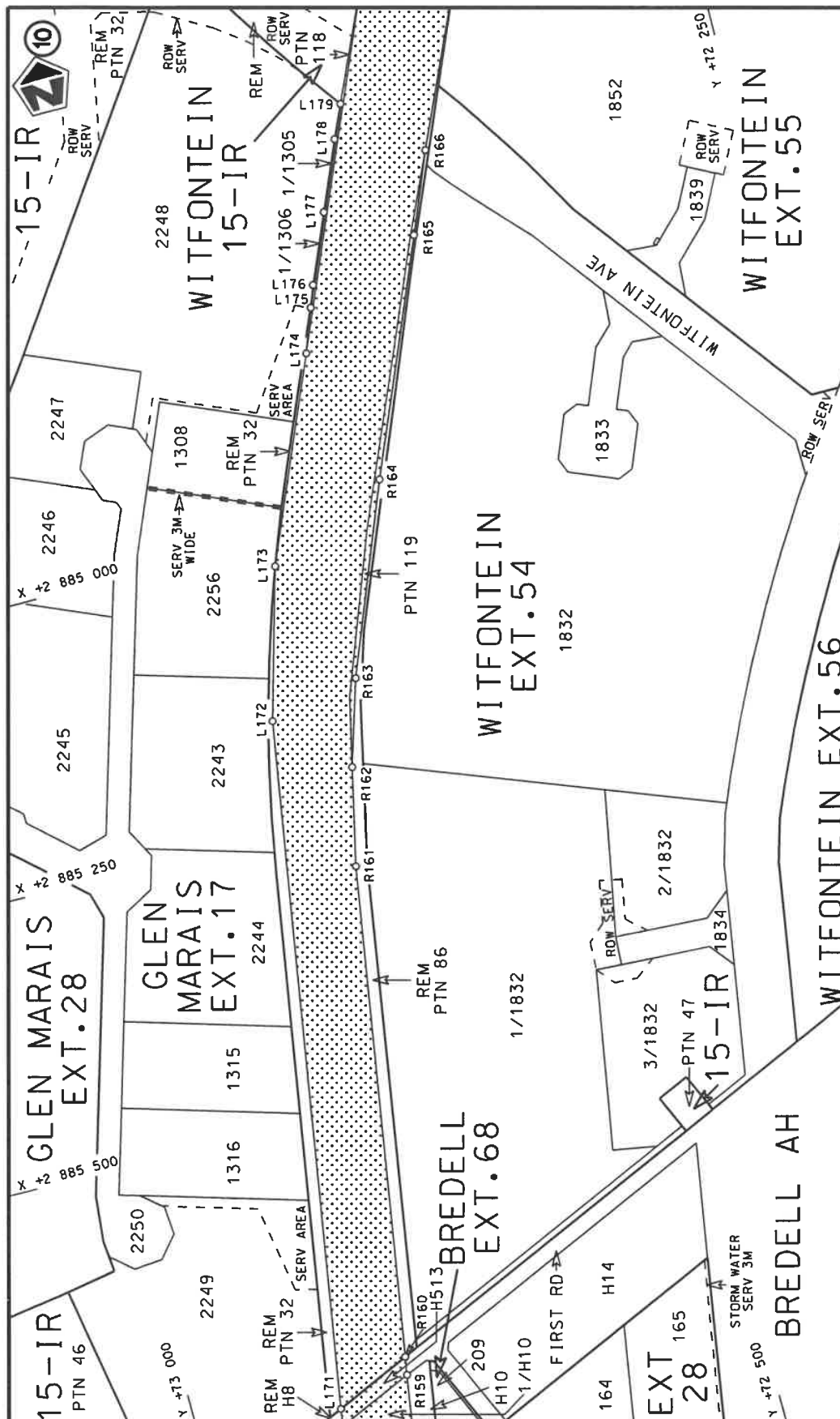
Die Suid Afrikaanse Nasionale Padagentskap MSB Bpk The South African National Roads Agency SOC Ltd	Die figuur getoon The figure shown		steldie padreserwe voor van 'n gedeelte represents the road reserve of a portion van Nasionale Roete of National Route	1 Sekse Section	Plan P1193/20	Vel Sheet 6 of 20	van of 20
---	---------------------------------------	---	---	-----------------------	------------------	-------------------------	-----------------

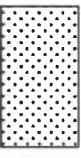


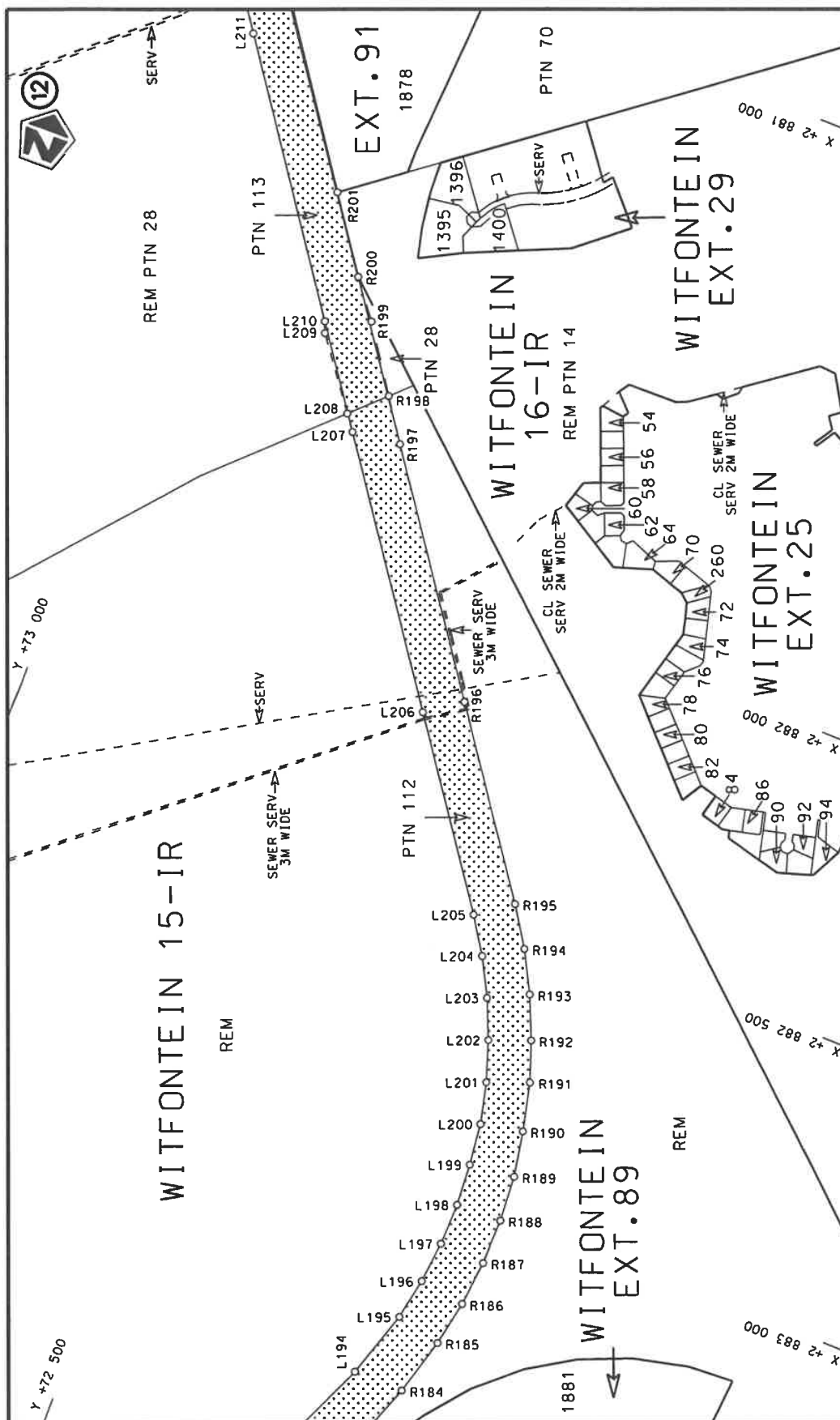
Die Suid Afrikaanse Nasionale Padagentskap MSB Bpk The South African National Roads Agency SOC Ltd	Die figuur getoon The figure shown	steldie padreserwe voor van 'n gedeelte represents the road reserve of a portion van Nasionale Roete R21 of National Route	Vel Sheet 7 of 20 Plan P1193/20
---	---------------------------------------	---	---------------------------------------




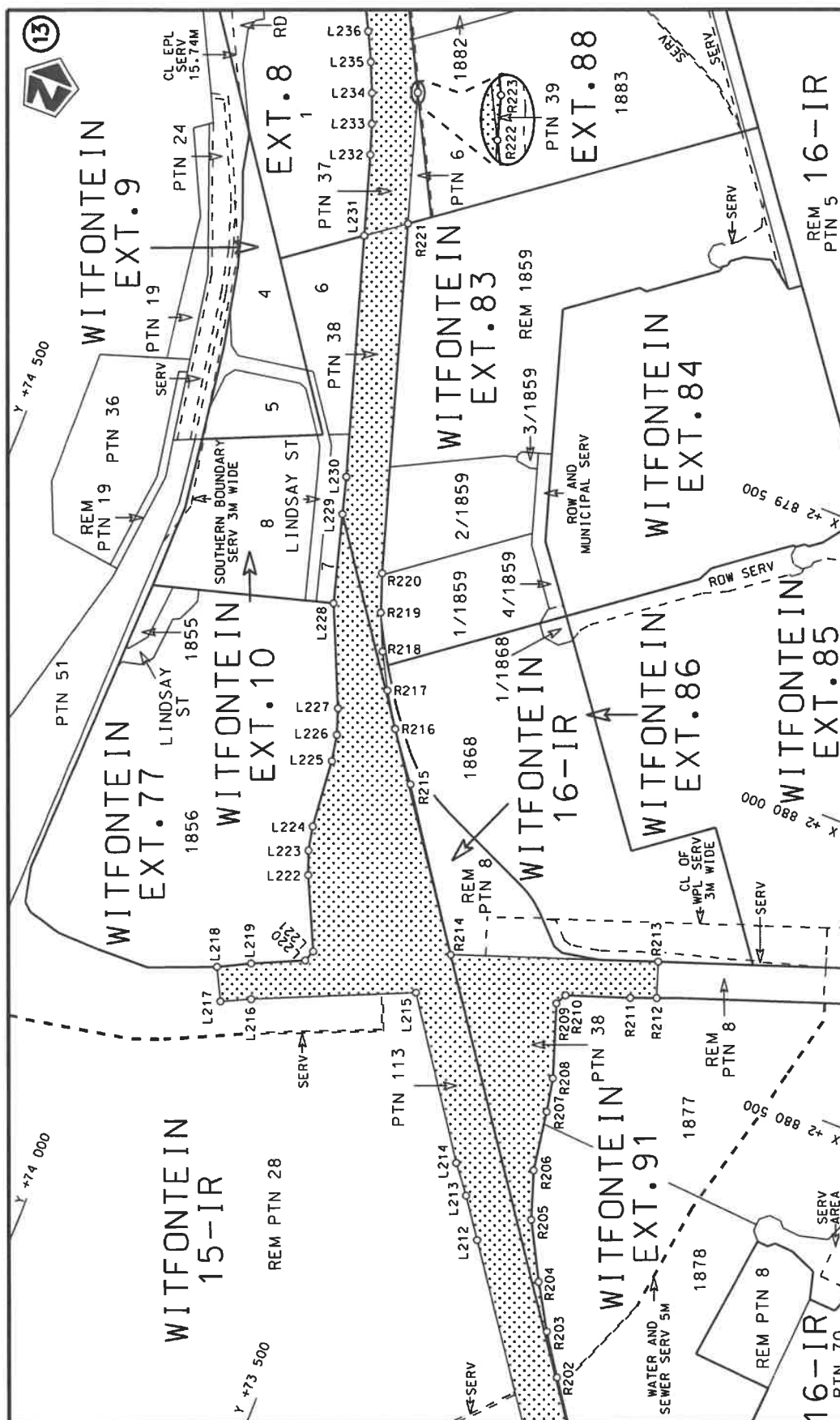
Die Suid Afrikaanse Nasionale Padagentskap MSB Bpk	Die figuur getoon		steldie padreserwe voor van 'n gedeelte represents the road reserve of a portion	Vel Sheet 8 of 20
The South African National Roads Agency SOC Ltd	The figure shown		von Nasionale Roete R21 of National Route	Plan P1193/20



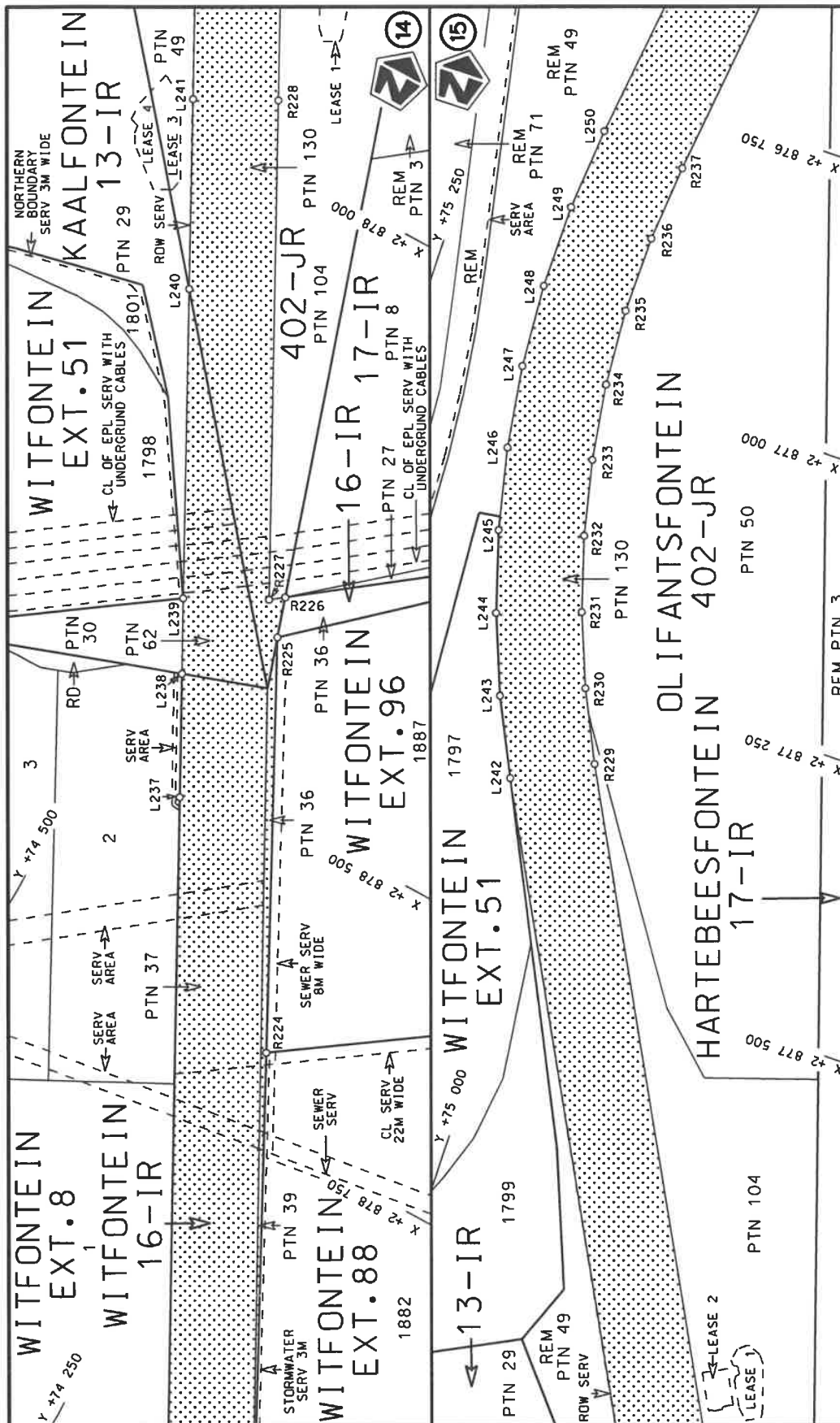
Die Suid Afrikaanse Nasionale Padagentskap MSB Bpk The South African National Roads Agency SOC Ltd	Die figuur getoon The figure shown		stel die padreserwe voor van 'n gedeelte represents the road reserve of a portion van Nasionale Roete R21 of National Route	
			Vel Sheet	van of
			1	20
			Plan	P1193/20

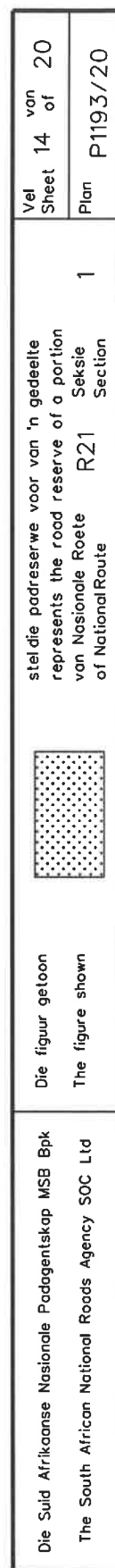


Die Suid Afrikaanse Nasionale Padagentskap MSB Bpk	Die figuur getoon		steldie padreserwe voor van 'n gedeelte represents the road reserve of a portion van Nasionale Roete R21 Seksie of National Route Section	Vel Sheet	11 of	20
The South African National Roads Agency SOC Ltd	The figure shown			1	Plan	P1193/20



Die Suid Afrikaanse Nasionale Padagentskap MSB Bpk The South African National Roads Agency SOC Ltd	Die figuur getoon The figure shown	stel die padreserwe voor van 'n gedeelte represents the road reserve of a portion van Nasionale Roete R21 of National Route	Vel Sheet 12 of 20 Plan P1193/20
---	---------------------------------------	--	--





PADRESERVE KOÖRDINATE / ROAD RESERVE CO-ORDINATES									
LINKERKANT/LEFT HAND SIDE					REGTERKANT/RIGHT HAND SIDE				
	Y		X	WG 29°		Y		X	
L1	77 045.22	2 895	700.82		R1	76 981.36	2 895	672.90	
L2	77 062.15	2 895	660.07		R2	76 971.22	2 895	677.14	
L3	77 055.52	2 895	656.70		R3	76 996.19	2 895	639.40	
L4	77 151.92	2 895	436.82		R4	77 079.12	2 895	449.37	
L5	77 163.60	2 895	410.31		R5	77 087.04	2 895	433.52	
L6	77 181.94	2 895	367.63		R6	77 127.67	2 895	342.15	
L7	77 346.16	2 894	994.22		R7	77 289.58	2 894	974.69	
L8	77 477.84	2 894	694.62		R8	77 423.61	2 894	670.44	
L9	77 542.45	2 894	548.72		R9	77 436.97	2 894	639.77	
L10	77 550.88	2 894	528.64		R10	77 470.32	2 894	559.26	
L11	77 557.00	2 894	514.04		R11	77 478.54	2 894	539.22	
L12	77 644.01	2 894	347.07		R12	77 540.97	2 894	387.02	
L13	77 658.41	2 894	321.30		R13	77 565.50	2 894	322.38	
L14	77 659.28	2 894	319.75		R14	77 584.06	2 894	254.02	
L15	77 675.60	2 894	290.54		R15	77 597.94	2 894	186.05	
L16	77 699.02	2 894	260.04		R16	77 608.93	2 894	113.91	
L17	77 752.67	2 894	192.93		R17	77 601.05	2 894	084.78	
L18	77 793.35	2 894	163.98		R18	77 572.58	2 894	067.60	
L19	77 847.53	2 894	190.87		R19	77 502.35	2 894	026.71	
L20	77 897.31	2 894	211.99		R20	77 481.62	2 894	032.81	
L21	77 899.50	2 894	206.85		R21	77 507.04	2 893	973.60	
L22	77 929.46	2 894	172.05		R22	77 516.04	2 893	993.16	
L23	77 821.35	2 894	111.76		R23	77 624.50	2 894	026.21	
L24	77 811.30	2 894	067.30		R24	77 651.39	2 894	012.78	
L25	77 821.22	2 894	004.57		R25	77 708.35	2 893	942.45	
L26	77 822.00	2 893	999.68		R26	77 741.84	2 893	895.52	
L27	77 835.38	2 893	929.23		R27	77 769.90	2 893	848.56	
L28	77 854.29	2 893	862.82		R28	77 867.48	2 893	661.23	
L29	77 878.69	2 893	796.69		R29	77 914.79	2 893	551.06	
L30	77 959.78	2 893	599.80		R30	77 919.08	2 893	537.09	
L31	77 983.78	2 893	531.76		R31	77 930.81	2 893	498.95	
L32	77 988.80	2 893	517.57		R32	77 970.10	2 893	347.77	
L33	78 000.60	2 893	484.15		R33	77 987.81	2 893	198.09	
L34	78 029.95	2 893	365.23		R34	77 987.53	2 893	058.18	
L35	78 047.11	2 893	244.43		R35	77 985.06	2 893	013.72	
L36	78 051.67	2 893	148.56		R36	77 984.76	2 893	008.38	
L37	78 051.89	2 893	143.95		R37	77 981.79	2 892	988.62	
L38	78 051.36	2 893	108.69		R38	77 971.03	2 892	917.13	
L39	78 051.28	2 893	044.46		R39	77 945.62	2 892	778.44	
L40	78 048.37	2 892	981.26		R40	77 925.00	2 892	721.39	
L41	78 004.03	2 892	828.01		R41	77 886.99	2 892	616.21	
L42	77 997.04	2 892	805.29		R42	77 834.70	2 892	485.30	
L43	77 968.19	2 892	711.54		R43	77 750.86	2 892	317.57	
L44	77 940.07	2 892	623.50		R44	77 674.73	2 892	198.06	
L45	77 926.94	2 892	587.54		R45	77 511.85	2 891	993.91	
L46	77 845.93	2 892	365.65		R46	77 452.95	2 891	920.10	
L47	77 715.05	2 892	111.03		R47	77 389.54	2 891	842.39	
L48	77 696.03	2 892	040.98		R48	77 351.02	2 891	802.54	
L49	77 661.21	2 891	941.05		R49	77 315.33	2 891	795.49	
L50	77 657.35	2 891	929.96		R50	77 257.54	2 891	799.98	
L51	77 655.43	2 891	897.64		R51	77 209.66	2 891	775.79	
					Vel Sheet	15	Van of	20	P1193/20

PADRESERVE KOÖRDINATE / ROAD RESERVE CO-ORDINATES									
LINKERKANT/LEFT HAND SIDE					REGTERKANT/RIGHT HAND SIDE				
	Y	X	WG	29°		Y	X		
L52	77 661.64	2 891 765.56			R52	77 194.14	2 891 713.46		
L53	77 653.35	2 891 735.76			R53	77 176.31	2 891 686.81		
L54	77 636.24	2 891 662.12			R54	77 172.80	2 891 575.98		
L55	77 633.19	2 891 642.36			R55	77 173.49	2 891 561.75		
L56	77 659.83	2 891 643.82			R56	77 159.90	2 891 518.67		
L57	77 701.28	2 891 646.10			R57	77 118.09	2 891 470.50		
L58	77 713.48	2 891 646.77			R58	76 945.96	2 891 324.75		
L59	77 687.41	2 891 553.69			R59	76 842.69	2 891 237.25		
L60	77 676.03	2 891 513.03			R60	76 591.28	2 891 048.70		
L61	77 655.83	2 891 515.22			R61	76 507.11	2 890 958.24		
L62	77 619.32	2 891 519.18			R62	76 498.09	2 890 943.54		
L63	77 593.91	2 891 521.94			R63	76 480.12	2 890 914.25		
L64	77 547.03	2 891 527.02			R64	76 443.48	2 890 854.53		
L65	77 483.47	2 891 495.66			R65	76 399.66	2 890 752.03		
L66	77 239.02	2 891 375.04			R66	76 387.26	2 890 670.99		
L67	77 125.91	2 891 284.34			R67	76 286.13	2 889 991.56		
L68	76 771.43	2 891 091.92			R68	76 255.90	2 889 824.21		
L69	76 667.08	2 891 025.99			R69	76 224.24	2 889 700.77		
L70	76 628.81	2 890 993.18			R70	76 196.32	2 889 608.10		
L71	76 628.17	2 890 992.59			R71	76 161.43	2 889 518.41		
L72	76 607.63	2 890 973.58			R72	76 116.02	2 889 422.46		
L73	76 606.98	2 890 972.98			R73	76 075.18	2 889 354.21		
L74	76 563.59	2 890 922.71			R74	76 067.26	2 889 354.82		
L75	76 563.01	2 890 922.04			R75	76 056.89	2 889 363.96		
L76	76 553.46	2 890 908.36			R76	76 027.94	2 889 331.04		
L77	76 532.76	2 890 878.72			R77	76 043.02	2 889 317.07		
L78	76 516.66	2 890 852.93			R78	75 917.99	2 889 084.02		
L79	76 489.06	2 890 799.95			R79	75 872.60	2 889 017.03		
L80	76 478.91	2 890 775.37			R80	75 818.99	2 888 947.98		
L81	76 477.40	2 890 771.72			R81	75 756.98	2 888 875.98		
L82	76 467.12	2 890 743.27			R82	75 684.02	2 888 811.99		
L83	76 458.84	2 890 714.13			R83	75 606.18	2 888 750.84		
L84	76 450.52	2 890 676.58			R84	75 525.92	2 888 695.87		
L85	76 446.90	2 890 654.22			R85	75 437.24	2 888 644.19		
L86	76 415.88	2 890 444.13			R86	75 347.00	2 888 595.01		
L87	76 401.69	2 890 354.02			R87	75 209.18	2 888 538.44		
L88	76 271.55	2 889 487.46			R88	75 039.77	2 888 475.01		
L89	76 263.21	2 889 483.71			R89	75 028.02	2 888 542.84		
L90	76 209.90	2 889 344.70			R90	75 005.39	2 888 604.19		
L91	76 175.19	2 889 270.96			R91	74 945.22	2 888 725.91		
L92	76 198.28	2 889 256.05			R92	74 829.26	2 888 772.75		
L93	75 923.97	2 888 940.05			R93	74 779.95	2 888 792.68		
L94	75 794.80	2 888 813.38			R94	74 764.81	2 888 798.22		
L95	75 480.25	2 888 570.43			R95	74 748.92	2 888 804.04		
L96	75 384.74	2 888 534.16			R96	74 667.72	2 888 854.62		
L97	75 207.47	2 888 437.19			R97	74 639.87	2 888 883.26		
L98	75 138.62	2 888 397.69			R98	74 311.92	2 888 169.31		
L99	75 121.38	2 888 387.80			R99	74 260.45	2 888 140.73		
L100	75 036.18	2 888 336.62			R100	74 235.33	2 888 125.53		
L101	74 983.41	2 888 303.23			R101	74 190.14	2 888 098.19		
L102	74 930.55	2 888 264.55			R102	74 160.41	2 888 079.27		
					<div> <div>Vel</div> <div>16</div> <div>Van</div> <div>20</div> <div>Sheet</div> <div>of</div> <div>P1193/20</div> </div>				

PADRESERVE KOÖRDINATE / ROAD RESERVE CO-ORDINATES									
LINKERKANT/LEFT HAND SIDE					REGTERKANT/RIGHT HAND SIDE				
	Y	X	WG 29°			Y	X		
L103	74 864.32	2 888 223.60			R103	74 121.07	2 888 053.73		
L104	74 798.79	2 888 208.81			R104	74 087.64	2 888 030.25		
L105	74 657.11	2 888 186.97			R105	74 053.77	2 888 006.68		
L106	74 646.77	2 888 185.38			R106	74 016.14	2 887 979.63		
L107	74 623.84	2 888 181.84			R107	73 944.87	2 887 928.40		
L108	74 532.49	2 888 170.92			R108	73 873.71	2 887 877.13		
L109	74 457.17	2 888 147.45			R109	73 865.98	2 887 871.57		
L110	74 290.40	2 888 089.00			R110	73 794.80	2 887 820.28		
L111	74 270.47	2 888 077.01			R111	73 723.64	2 887 768.98		
L112	74 221.78	2 888 047.72			R112	73 652.13	2 887 718.30		
L113	74 195.56	2 888 030.73			R113	73 580.55	2 887 667.57		
L114	74 154.46	2 888 004.09			R114	73 510.44	2 887 614.82		
L115	74 122.62	2 887 981.94			R115	73 442.48	2 887 559.03		
L116	74 088.66	2 887 958.30			R116	73 375.35	2 887 501.74		
L117	74 051.19	2 887 931.29			R117	73 307.92	2 887 445.16		
L118	73 908.83	2 887 828.67			R118	73 240.52	2 887 388.60		
L119	73 901.09	2 887 823.09			R119	73 172.04	2 887 333.61		
L120	73 829.92	2 887 771.79			R120	73 150.66	2 887 316.43		
L121	73 758.76	2 887 720.49			R121	73 150.45	2 887 315.63		
L122	73 687.66	2 887 669.24			R122	73 133.13	2 887 247.52		
L123	73 616.53	2 887 617.95			R123	73 112.98	2 887 231.46		
L124	73 549.90	2 887 560.39			R124	73 086.96	2 887 226.64		
L125	73 488.68	2 887 495.26			R125	73 055.44	2 887 224.39		
L126	73 430.03	2 887 426.23			R126	73 035.35	2 887 222.96		
L127	73 371.54	2 887 357.38			R127	73 030.93	2 887 229.21		
L128	73 322.82	2 887 300.04			R128	72 969.76	2 887 190.43		
L129	73 318.42	2 887 281.17			R129	72 957.52	2 887 180.97		
L130	73 309.33	2 887 244.76			R130	72 950.56	2 887 175.58		
L131	73 321.22	2 887 229.78			R131	72 914.44	2 887 147.64		
L132	73 355.18	2 887 230.47			R132	72 915.61	2 887 145.82		
L133	73 410.96	2 887 231.94			R133	72 923.77	2 887 133.19		
L134	73 449.70	2 887 249.55			R134	72 977.90	2 887 172.32		
L135	73 450.78	2 887 248.06			R135	72 980.68	2 887 173.44		
L136	73 487.68	2 887 274.75			R136	73 017.27	2 887 188.25		
L137	73 497.19	2 887 262.20			R137	73 060.52	2 887 188.78		
L138	73 508.82	2 887 246.85			R138	73 062.67	2 887 188.81		
L139	73 473.93	2 887 221.53			R139	73 102.69	2 887 184.17		
L140	73 455.72	2 887 214.87			R140	73 118.46	2 887 162.09		
L141	73 445.61	2 887 211.18			R141	73 109.93	2 887 120.51		
L142	73 417.23	2 887 204.34			R142	73 089.15	2 887 019.09		
L143	73 376.89	2 887 194.62			R143	73 068.40	2 886 917.80		
L144	73 375.30	2 887 194.24			R144	73 066.50	2 886 908.76		
L145	73 318.41	2 887 185.84			R145	73 066.33	2 886 907.76		
L146	73 305.73	2 887 175.23			R146	73 064.13	2 886 894.53		
L147	73 295.56	2 887 166.72			R147	73 045.74	2 886 807.97		
L148	73 293.50	2 887 161.59			R148	73 044.52	2 886 803.56		
L149	73 278.00	2 887 123.05			R149	73 010.21	2 886 679.68		
L150	73 222.48	2 887 052.34			R150	72 958.40	2 886 492.63		
L151	73 191.06	2 887 008.41			R151	72 923.70	2 886 367.31		
L152	73 185.05	2 887 000.00			R152	72 900.75	2 886 284.49		
L153	73 175.22	2 886 986.32			R153	72 898.01	2 886 275.30		
					<div> <div>Vel 17</div> <div>Sheet of</div> <div>Van 20</div> <div>P1193/20</div> </div>				

PADRESERVE KOÖRDINATE / ROAD RESERVE CO-ORDINATES						
LINKERKANT/LEFT HAND SIDE				REGTERKANT/RIGHT HAND SIDE		
	Y	X	WG 29°		Y	X
L154	73 169.17	2 886 977.87		R154	72 894.38	2 886 263.14
L155	73 165.16	2 886 967.46		R155	72 880.47	2 886 177.04
L156	73 141.18	2 886 904.86		R156	72 857.18	2 886 058.68
L157	73 127.37	2 886 860.39		R157	72 853.42	2 886 039.57
L158	73 090.23	2 886 740.36		R158	72 835.90	2 885 900.66
L159	73 054.89	2 886 617.89		R159	72 810.07	2 885 740.17
L160	73 002.92	2 886 431.17		R160	72 807.52	2 885 724.50
L161	72 968.19	2 886 305.90		R161	72 738.65	2 885 297.38
L162	72 959.35	2 886 275.06		R162	72 719.52	2 885 212.55
L163	72 956.90	2 886 265.83		R163	72 696.56	2 885 137.94
L164	72 953.67	2 886 253.64		R164	72 631.88	2 884 974.96
L165	72 956.25	2 886 253.20		R165	72 548.21	2 884 775.84
L166	72 940.49	2 886 150.58		R166	72 519.93	2 884 706.41
L167	72 924.30	2 886 047.85		R167	72 425.62	2 884 497.76
L168	72 921.56	2 886 028.26		R168	72 376.59	2 884 398.97
L169	72 888.88	2 885 851.60		R169	72 342.94	2 884 337.15
L170	72 875.65	2 885 769.52		R170	72 314.96	2 884 274.77
L171	72 873.50	2 885 754.33		R171	72 278.05	2 884 222.10
L172	72 776.40	2 885 155.79		R172	72 239.13	2 884 192.43
L173	72 739.46	2 885 025.33		R173	72 214.28	2 884 197.82
L174	72 665.43	2 884 851.94		R174	72 137.39	2 884 344.12
L175	72 651.51	2 884 814.28		R175	72 112.52	2 884 331.06
L176	72 644.61	2 884 795.60		R176	72 084.51	2 884 316.33
L177	72 619.27	2 884 736.26		R177	72 148.50	2 884 194.57
L178	72 593.93	2 884 676.95		R178	72 165.92	2 884 161.41
L179	72 581.08	2 884 648.46		R179	72 144.80	2 884 119.93
L180	72 533.89	2 884 543.86		R180	72 126.22	2 884 083.35
L181	72 486.19	2 884 406.54		R181	72 110.01	2 883 903.91
L182	72 451.03	2 884 311.13		R182	72 095.12	2 883 790.61
L183	72 437.51	2 884 240.91		R183	72 050.19	2 883 646.70
L184	72 432.05	2 884 171.60		R184	71 937.06	2 883 343.44
L185	72 422.76	2 883 945.11		R185	71 908.53	2 883 243.06
L186	72 407.46	2 883 907.99		R186	71 893.08	2 883 163.68
L187	72 389.50	2 883 864.02		R187	71 884.30	2 883 083.49
L188	72 418.09	2 883 809.61		R188	71 882.56	2 883 002.85
L189	72 400.46	2 883 800.35		R189	71 887.47	2 882 922.45
L190	72 365.19	2 883 781.90		R190	71 901.84	2 882 842.58
L191	72 333.84	2 883 841.33		R191	71 920.99	2 882 758.20
L192	72 214.63	2 883 731.63		R192	71 945.20	2 882 688.29
L193	72 111.28	2 883 537.19		R193	71 976.47	2 882 613.80
L194	72 024.75	2 883 341.70		R194	72 013.86	2 882 542.57
L195	71 987.17	2 883 224.06		R195	72 057.20	2 882 474.87
L196	71 973.07	2 883 151.57		R196	72 266.94	2 882 175.63
L197	71 965.14	2 883 078.18		R197	72 533.69	2 881 794.40
L198	71 963.45	2 883 004.42		R198	72 581.99	2 881 722.75
L199	71 968.01	2 882 930.60		R199	72 656.69	2 881 611.95
L200	71 975.72	2 882 857.12		R200	72 706.36	2 881 547.13
L201	71 992.61	2 882 785.03		R201	72 793.34	2 881 422.04
L202	72 015.50	2 882 714.52		R202	73 023.52	2 881 090.31
L203	72 044.29	2 882 646.26		R203	73 069.02	2 881 021.83
L204	72 078.52	2 882 580.68		R204	73 113.91	2 880 945.39
				Vel Sheet	18 Van of 20	P1193/20

PADRESERVE KOÖRDINATE / ROAD RESERVE CO-ORDINATES									
LINKERKANT/LEFT HAND SIDE					REGTERKANT/RIGHT HAND SIDE				
	Y	X	WG	29°		Y	X		
L205	72 118.32	2 882	518.17		R205	73 165.14	2 880	848.31	
L206	72 328.31	2 882	218.60		R206	73 192.89	2 880	765.96	
L207	72 618.25	2 881	804.25		R207	73 208.79	2 880	661.66	
L208	72 638.28	2 881	777.18		R208	73 220.08	2 880	603.07	
L209	72 725.11	2 881	659.82		R209	73 261.83	2 880	478.10	
L210	72 732.71	2 881	640.64		R210	73 251.89	2 880	458.87	
L211	73 030.20	2 881	215.33		R211	73 144.47	2 880	422.10	
L212	73 239.94	2 880	915.65		R212	73 101.06	2 880	405.60	
L213	73 286.06	2 880	849.92		R213	73 121.70	2 880	345.17	
L214	73 322.93	2 880	802.44		R214	73 463.75	2 880	464.87	
L215	73 496.50	2 880	548.96		R215	73 637.62	2 880	211.56	
L216	73 761.38	2 880	664.50		R216	73 697.39	2 880	131.01	
L217	73 809.87	2 880	687.42		R217	73 734.81	2 880	073.07	
L218	73 837.61	2 880	633.08		R218	73 767.41	2 880	012.33	
L219	73 784.08	2 880	605.81		R219	73 794.98	2 879	949.95	
L220	73 697.45	2 880	566.78		R220	73 817.80	2 879	884.61	
L221	73 690.04	2 880	547.02		R221	73 997.34	2 879	297.37	
L222	73 746.76	2 880	425.06		R222	74 064.38	2 879	078.14	
L223	73 761.86	2 880	384.76		R223	74 064.81	2 879	076.70	
L224	73 770.22	2 880	342.62		R224	74 292.75	2 878	628.67	
L225	73 780.44	2 880	223.75		R225	74 457.47	2 878	304.92	
L226	73 789.01	2 880	177.83		R226	74 468.22	2 878	270.97	
L227	73 803.86	2 880	133.56		R227	74 479.66	2 878	279.50	
L228	73 877.82	2 879	964.66		R228	74 680.65	2 877	892.98	
L229	73 919.71	2 879	813.33		R229	74 976.08	2 877	325.31	
L230	73 937.31	2 879	749.77		R230	75 004.42	2 877	265.03	
L231	74 061.11	2 879	344.76		R231	75 028.31	2 877	202.89	
L232	74 102.72	2 879	208.89		R232	75 047.32	2 877	138.95	
L233	74 119.73	2 879	157.60		R233	75 061.42	2 877	073.74	
L234	74 139.00	2 879	107.14		R234	75 070.68	2 877	007.58	
L235	74 160.59	2 879	057.62		R235	75 074.84	2 876	941.15	
L236	74 184.42	2 879	009.13		R236	75 073.64	2 876	874.37	
L237	74 465.77	2 878	468.35		R237	75 067.62	2 876	807.77	
L238	74 515.54	2 878	372.69		R238	75 028.12	2 876	503.26	
L239	74 546.03	2 878	314.19		R239	74 993.09	2 876	233.64	
L240	74 670.44	2 878	074.50		R240	74 942.19	2 875	842.25	
L241	74 746.71	2 877	927.55		R241	74 932.08	2 875	764.04	
L242	75 042.20	2 877	360.18		R242	74 921.80	2 875	683.62	
L243	75 073.18	2 877	294.73		R243	74 916.84	2 875	645.53	
L244	75 099.13	2 877	227.10		R244	74 914.68	2 875	629.09	
L245	75 119.78	2 877	157.64		R245	74 901.73	2 875	529.31	
L246	75 135.06	2 877	086.89		R246	74 881.96	2 875	378.07	
L247	75 144.99	2 877	015.21		R247	74 862.46	2 875	284.22	
L248	75 149.41	2 876	942.93		R248	74 828.90	2 875	186.32	
L249	75 148.42	2 876	870.27		R249	74 811.82	2 875	147.91	
L250	75 141.75	2 876	798.40		R250	74 763.94	2 875	070.00	
L251	75 126.14	2 876	677.08		R251	74 759.12	2 875	062.13	
L252	75 081.62	2 876	334.35		R252	74 690.53	2 874	983.48	
L253	75 024.49	2 875	893.23		R253	74 632.33	2 874	932.89	
L254	75 013.40	2 875	807.57		R254	74 539.36	2 874	860.90	
L255	74 996.18	2 875	674.60		R255	74 496.62	2 874	830.24	
					<div> <div>Vel</div> <div>19</div> <div>Van</div> <div>20</div> <div>Sheet</div> <div>of</div> <div>P1193/20</div> </div>				

PADRESERWE KOÖRDINATE / ROAD RESERVE CO-ORDINATES									
LINKERKANT/LEFT HAND SIDE					REGTERKANT/RIGHT HAND SIDE				
	Y		X	WG 29°		Y		X	
L256	74 990.99	2	875	634.45	R256	74 447.49	2	874	790.01
L257	74 985.57	2	875	592.64	R257	74 407.43	2	874	734.77
L258	74 917.55	2	875	068.74	R258	74 380.60	2	874	672.26
L259	74 890.86	2	874	863.59	R259	74 370.29	2	874	599.73
L260	74 879.78	2	874	686.33	R260	74 377.46	2	874	527.65
L261	74 876.36	2	874	640.82	R261	74 411.09	2	874	456.51
L262	74 876.03	2	874	601.51	R262	74 462.40	2	874	390.97
L263	74 882.45	2	874	561.27	R263	74 513.78	2	874	346.46
L264	74 895.23	2	874	523.25	R1X	76 978.65	2	895	678.71
L265	74 966.16	2	874	389.26	R2X	76 990.09	2	895	639.48
L266	74 978.93	2	874	366.25	R3X	77 000.21	2	895	630.32
L267	75 095.95	2	874	350.11	R97X1	74 617.91	2	888	916.86
L268	75 096.23	2	874	345.35	R97X2	74 588.74	2	889	008.57
L109X1	74 384.40	2	888	117.20	R97X3	74 561.92	2	889	120.40
L109X2	74 357.76	2	888	106.02	R97X4	74 500.06	2	889	110.20
L109X3	74 350.63	2	888	115.86	R97X5	74 509.63	2	889	037.46
					R97X6	74 551.53	2	888	789.26
					R97X7	74 561.20	2	888	710.37
					R97X8	74 562.97	2	888	627.09
					R97X9	74 554.27	2	888	545.40
					R97X10	74 533.02	2	888	462.35
					R97X11	74 506.44	2	888	460.30
					R97X12	74 462.70	2	888	456.94
					R97X13	74 462.11	2	888	456.89
					R97X14	74 428.83	2	888	442.70
					R97X15	74 402.35	2	888	424.90
					R97X16	74 384.61	2	888	398.26
					R97X17	74 382.65	2	888	387.58
					R97X18	74 380.29	2	888	374.63
					R97X19	74 378.81	2	888	366.57
					R97X20	74 386.19	2	888	334.83
					R97X21	74 405.37	2	888	308.68
					R97X22	74 433.51	2	888	291.58
					R97X23	74 443.71	2	888	271.08
					R97X24	74 410.44	2	888	245.76
					R97X25	74 378.85	2	888	226.50
					R97X26	74 381.82	2	888	222.43
					R97X27	74 371.94	2	888	208.91
					R97X28	74 329.44	2	888	178.74