

---

GOVERNMENT NOTICES • GOEWERMENTSKENNISGEWINGS

---

DEPARTMENT OF TRANSPORT

NO. 6416

11 July 2025

**THE SOUTH AFRICAN NATIONAL ROADS  
AGENCY SOC LIMITED**

Registration No: 1998/009584/30

---

**DECLARATION AMENDMENT OF NATIONAL ROAD N14 SECTION 6**

AMENDMENT OF DECLARATION No. 139 OF 2008.

By virtue of section 40(1)(b) of The South African National Roads Agency Limited and National Roads Act 1998 (Act No. 7 of 1998), I hereby amend Declaration No. 139 of 2008 by substituting it in its entirety with the accompanying sheets 1 to 10 of Plan No. P1212/20.

**(National Road N14 Section 6: Olifantshoek – Kathu)**

  
**MINISTER OF TRANSPORT**

DEPARTEMENT VAN VERVOER

NO. 6416

11 Julie 2025

**DIE SUID-AFRIKAANSE NASIONALE  
PADAGENTSKAP MSB BEPERK**

Registrasie No: 1998/009584/30

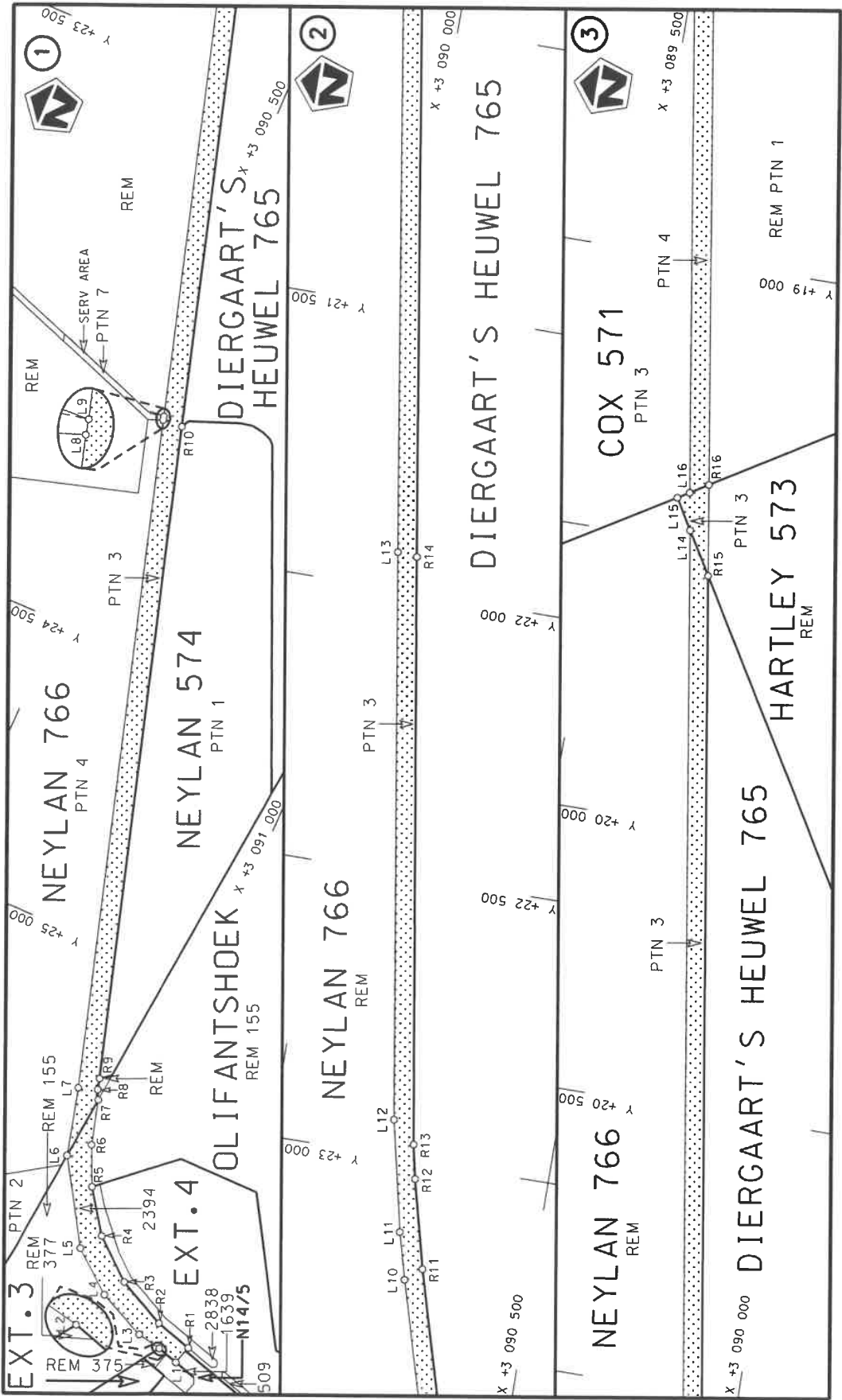
**VERKLARING WYSIGING VAN NASIONALE PAD N14 SEKSIE 6**


WYSIGING VAN VERKLARING No. 139 VAN 2008.

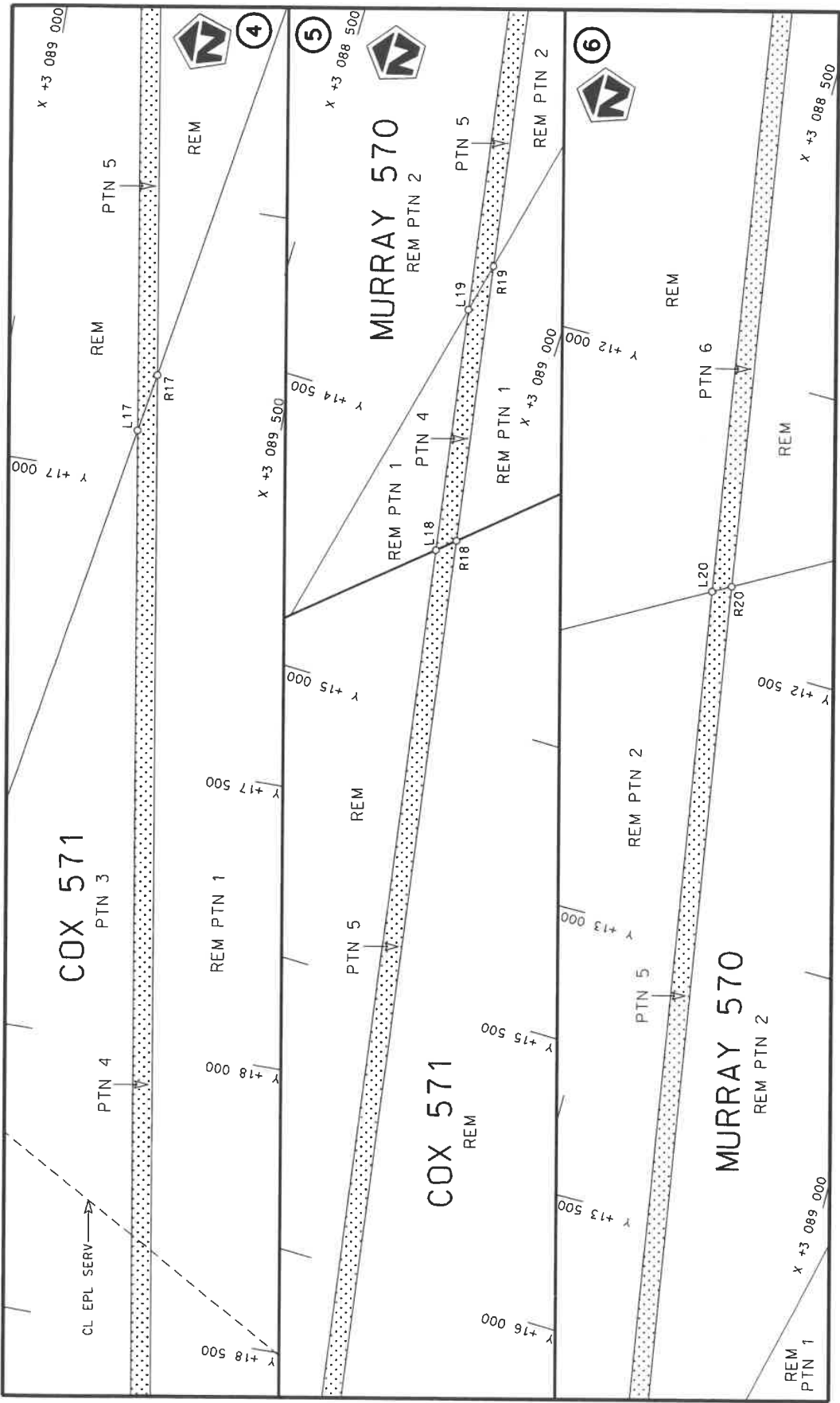
Kragtens Artikel 40(1)(b) van die Suid Afrikaanse Nasionale Padagentskap Beperk en Nasionale Paaie Wet 1998 (Wet No.7 van 1998), wysig ek hiermee Verklaring No. 139 van 2008 deur dit in sy geheel te vervang met bygaande velle 1 tot 10 van Plan No. P1212/20.

**(Nasionale Pad N14 Seksie 6: Olifantshoek – Kathu)**

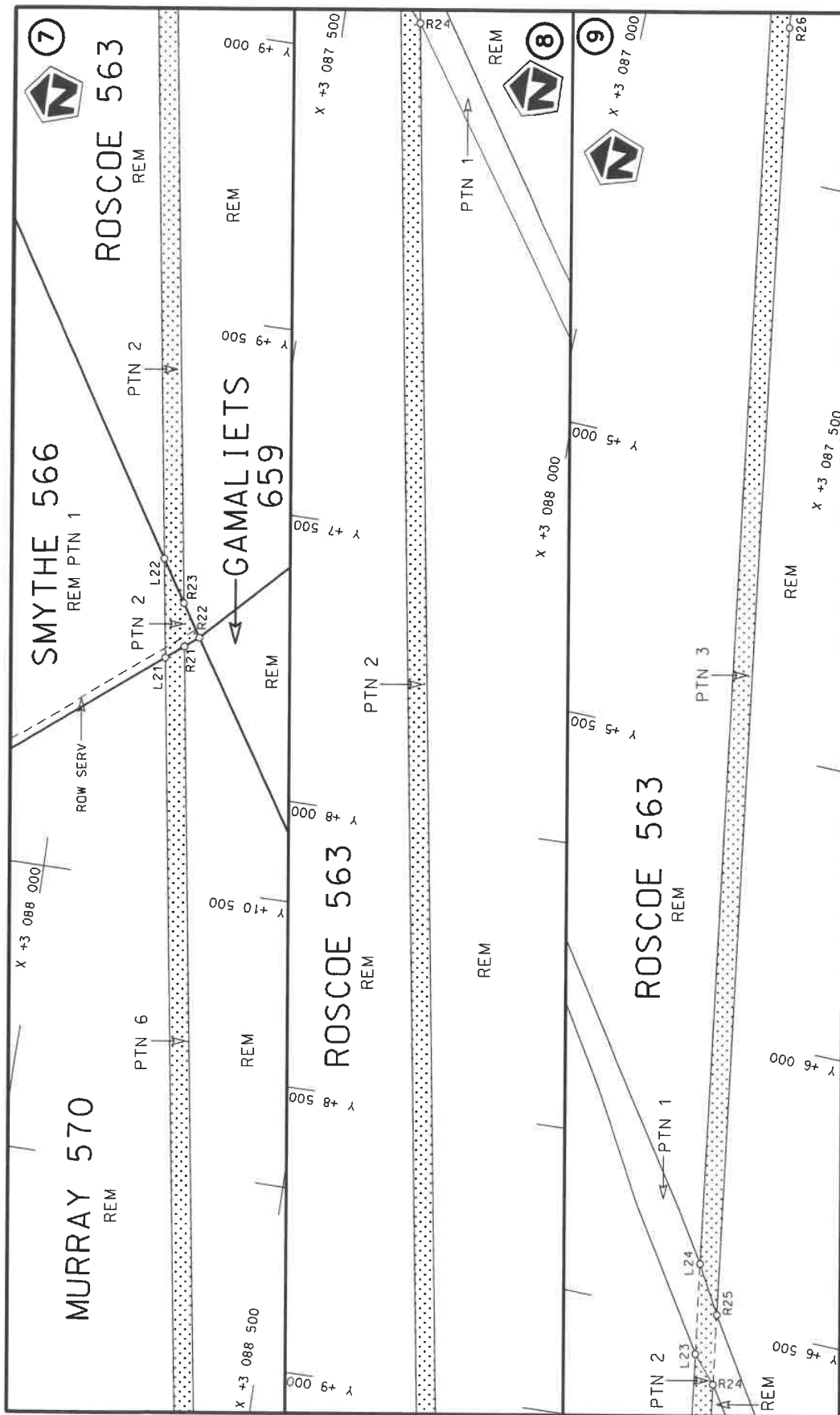
  
**MINISTER VAN VERVOER**



Die Suid Afrikaanse Nasionale Padagentskap MSB Bpk The South African National Roads Agency SOC Ltd	Die figuur getoon The figure shown		stel die padreserwe voor van 'n gedeelte represents the road reserve of a portion van Nasionale Roete N14 of National Route	Vel Sheet	1 of
				Plan	P1212/20

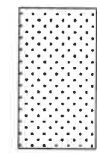


Die Suid Afrikaanse Nasionale Padagentskap MSB Bpk The South African National Roads Agency SOC Ltd		Die figuur getoon The figure shown		steldie podreserwe voor van 'n gedeelte represents the road reserve of a portion van Nasionale Roete N14 of National Route	
Vel Sheet		van 2 of		10	
Plan		P1212/20		6	



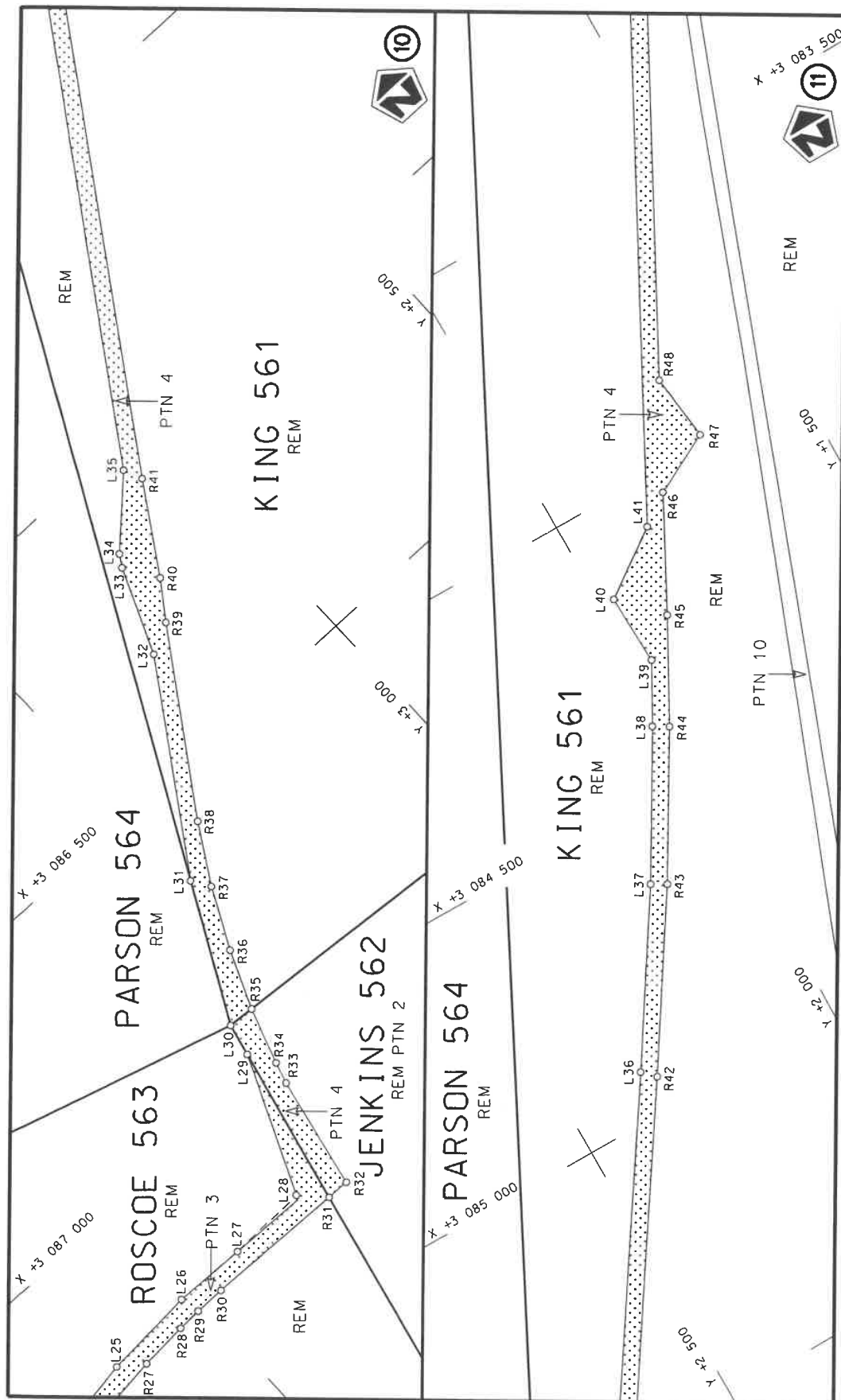
Die Suid Afrikaanse Nasionale Padagentskap MSB Bpk  
The South African National Roads Agency SOC Ltd

Die figuur getoon  
The figure shown



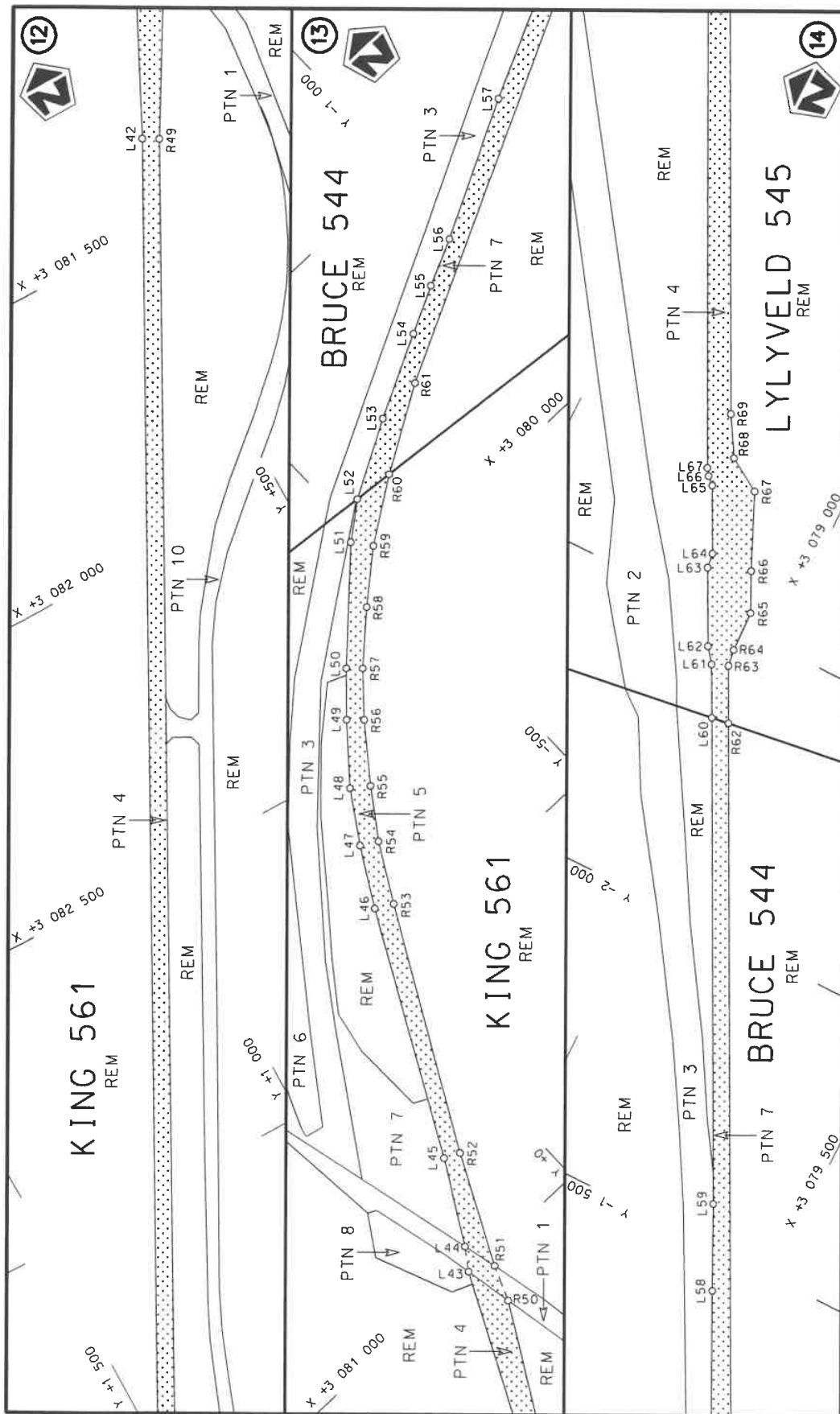
stelde padreserwe voor van 'n gedeelte  
represents the road reserve of a portion  
van Nasionale Roete N14  
of National Route Section

Vel  
Sheet 3 of 10  
Plan P1212/20

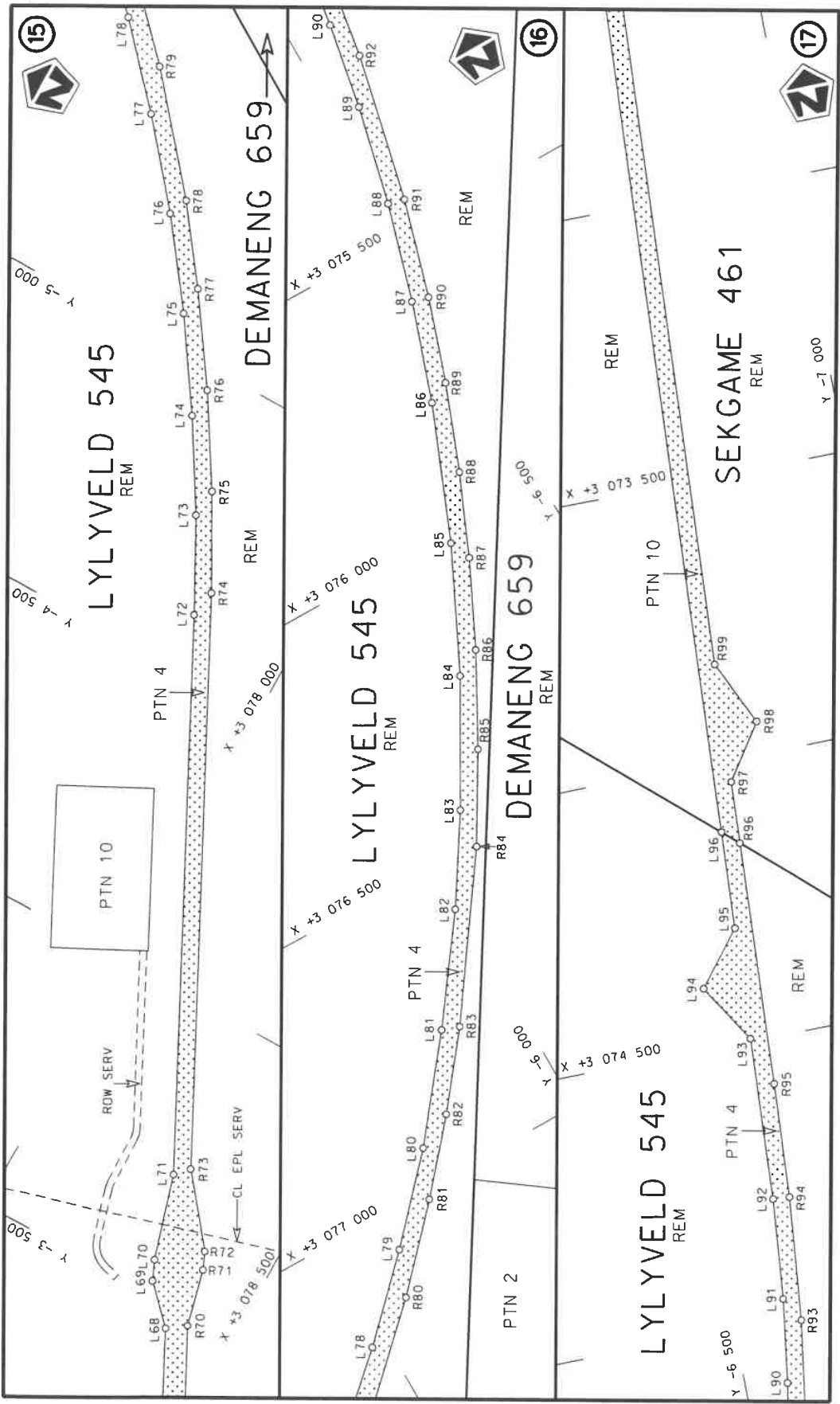


Die Suid Afrikaanse Nasionale Padagentskap MSB Bpk The South African National Roads Agency SOC Ltd	Die figuur getoon The figure shown	ste die padreserwe voor van 'n gedeelte represents the road reserve of a portion van Nasionale Roete N14 of National Route	Seksie Section	6	Vel Sheet	4	van of	10	Plan P1212/20
---	---------------------------------------	---	-------------------	---	--------------	---	-----------	----	------------------



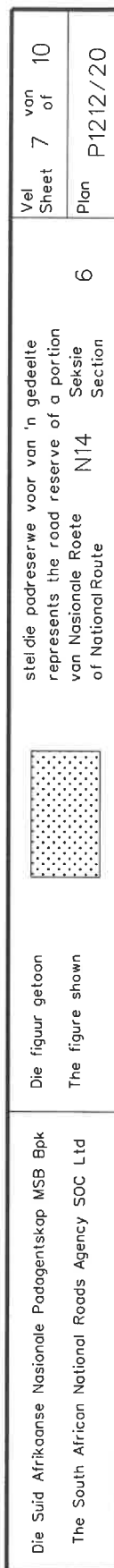


Die Suid Afrikaanse Nasionale Padagentskap MSB Bpk The South African National Roads Agency SOC Ltd	Die figuur getoon The figure shown	stel die padreserwe voor van 'n gedeelte represents the road reserve of a portion van Nasionale Roete N14 of National Route	Vel Sheet 5 of 10	Plan P1212/20
---	---------------------------------------	--	----------------------	------------------



Die Suid Afrikaanse Nasionale Padagentskap MSB Bpk The South African National Roads Agency SOC Ltd		Die figuur getoon The figure shown		stelt die padreserwe voor van 'n gedeelte represents the road reserve of a portion van Nasionale Roete N14 of National Route		Vel Sheet 6 of 10	
				Seksie Section 6		Plan P1212/20	





PADRESERWE KOÖRDINATE / ROAD RESERVE CO-ORDINATES									
LINKERKANT/LEFT HAND SIDE					REGTERKANT/RIGHT HAND SIDE				
	Y	X	WG 23°			Y	X		
L1	25 634.88	3 091 219.34			R1	25 602.36	3 091 229.27		
L2	25 623.68	3 091 182.68			R2	25 582.50	3 091 164.24		
L3	25 614.61	3 091 140.22			R3	25 538.63	3 091 078.39		
L4	25 573.60	3 091 054.40			R4	25 478.82	3 091 008.65		
L5	25 514.12	3 090 982.25			R5	25 404.83	3 090 957.72		
L6	25 371.06	3 090 895.00			R6	25 336.21	3 090 927.39		
L7	25 251.88	3 090 865.33			R7	25 257.74	3 090 906.78		
L8	24 096.93	3 090 532.28			R8	25 241.19	3 090 898.75		
L9	24 090.10	3 090 530.75			R9	25 221.90	3 090 893.75		
L10	23 213.94	3 090 276.85			R10	24 094.36	3 090 567.07		
L11	23 131.09	3 090 254.56			R11	23 189.85	3 090 305.30		
L12	22 934.40	3 090 211.27			R12	23 033.02	3 090 265.83		
L13	21 932.59	3 090 050.24			R13	22 972.54	3 090 252.91		
L14	19 478.53	3 089 659.03			R14	21 935.62	3 090 085.00		
L15	19 424.85	3 089 626.53			R15	19 553.23	3 089 704.26		
L16	19 412.33	3 089 646.96			R16	19 392.92	3 089 678.68		
L17	16 917.14	3 089 248.19			R17	16 814.12	3 089 266.07		
L18	14 725.90	3 088 897.70			R18	14 699.67	3 088 927.84		
L19	14 298.99	3 088 829.45			R19	14 212.07	3 088 850.01		
L20	12 387.56	3 088 523.65			R20	12 369.87	3 088 555.28		
L21	10 105.03	3 088 158.59			R21	10 080.44	3 088 189.04		
L22	9 932.15	3 088 131.09			R22	10 061.46	3 088 212.54		
L23	6 562.37	3 087 591.50			R23	10 004.82	3 088 176.86		
L24	6 404.69	3 087 566.08			R24	6 608.76	3 087 633.48		
L25	4 184.49	3 087 211.14			R25	6 486.81	3 087 613.98		
L26	4 018.29	3 087 200.50			R26	4 238.77	3 087 254.16		
L27	3 886.58	3 087 204.92			R27	4 141.98	3 087 243.07		
L28	3 740.86	3 087 201.63			R28	4 054.39	3 087 237.27		
L29	3 635.19	3 086 957.09			R29	4 010.51	3 087 235.97		
L30	3 621.96	3 086 898.82			R30	3 955.55	3 087 235.85		
L31	3 499.28	3 086 660.28			R31	3 700.33	3 087 243.98		
L32	3 274.00	3 086 318.29			R32	3 659.75	3 087 244.75		
L33	3 210.83	3 086 166.63			R33	3 618.33	3 087 041.66		
L34	3 197.51	3 086 145.24			R34	3 607.09	3 087 003.04		
L35	3 090.82	3 086 040.23			R35	3 574.40	3 086 902.58		
L36	2 352.70	3 084 919.19			R36	3 531.73	3 086 799.28		
L37	2 170.51	3 084 636.32			R37	3 478.98	3 086 692.94		
L38	2 027.83	3 084 393.25			R38	3 417.99	3 086 590.86		
L39	1 970.30	3 084 289.60			R39	3 219.94	3 086 290.94		
L40	1 974.85	3 084 162.36			R40	3 173.39	3 086 225.42		
L41	1 858.80	3 084 079.20			R41	3 076.93	3 086 073.34		
L42	420.54	3 081 353.30			R42	2 331.13	3 084 940.71		
L43	247.70	3 080 999.37			R43	2 144.69	3 084 650.93		
L44	221.69	3 080 962.56			R44	2 001.77	3 084 408.40		
L45	141.61	3 080 823.96			R45	1 906.26	3 084 233.38		
L46	-71.14	3 080 418.99			R46	1 804.01	3 084 039.55		
L47	-128.37	3 080 319.86			R47	1 695.41	3 083 983.31		
L48	-184.96	3 080 234.11			R48	1 710.82	3 083 862.90		
L49	-262.96	3 080 141.93			R49	394.63	3 081 367.69		
L50	-324.66	3 080 075.22			R50	231.81	3 081 084.09		
L51	-482.62	3 079 918.38			R51	207.21	3 081 023.12		
					<div> <div>Vel 8</div> <div>Sheet of 10</div> <div>P1212/20</div> </div>				

PADRESERWE KOÖRDINATE / ROAD RESERVE CO-ORDINATES						
LINKERKANT/LEFT HAND SIDE				REGTERKANT/RIGHT HAND SIDE		
	Y	X	WG 23°		Y	X
L52	-542.96	3 079	870.95	R52	114.73	3 080 836.11
L53	-672.94	3 079	798.00	R53	-101.07	3 080 435.86
L54	-814.59	3 079	725.53	R54	-157.31	3 080 336.99
L55	-894.71	3 079	684.66	R55	-213.84	3 080 256.05
L56	-974.53	3 079	646.96	R56	-285.53	3 080 163.06
L57	-1 205.52	3 079	525.02	R57	-345.85	3 080 095.18
L58	-1 430.99	3 079	414.71	R58	-424.84	3 080 021.19
L59	-1 569.20	3 079	347.31	R59	-507.23	3 079 950.22
L60	-2 335.78	3 078	959.79	R60	-613.70	3 079 877.31
L61	-2 419.62	3 078	917.11	R61	-756.92	3 079 791.07
L62	-2 445.33	3 078	897.07	R62	-2 340.08	3 078 990.39
L63	-2 569.15	3 078	834.09	R63	-2 430.85	3 078 944.95
L64	-2 594.80	3 078	830.75	R64	-2 459.95	3 078 940.66
L65	-2 702.00	3 078	776.46	R65	-2 531.57	3 078 938.20
L66	-2 713.97	3 078	763.10	R66	-2 598.10	3 078 905.86
L67	-2 725.94	3 078	754.67	R67	-2 726.36	3 078 848.47
L68	-3 460.55	3 078	385.68	R68	-2 762.52	3 078 789.26
L69	-3 523.46	3 078	324.21	R69	-2 829.45	3 078 749.40
L70	-3 558.05	3 078	309.23	R70	-3 483.66	3 078 417.88
L71	-3 707.81	3 078	265.74	R71	-3 584.12	3 078 393.72
L72	-4 599.70	3 077	814.71	R72	-3 614.62	3 078 380.70
L73	-4 756.80	3 077	731.60	R73	-3 731.18	3 078 287.65
L74	-4 908.78	3 077	639.77	R74	-4 648.83	3 077 823.13
L75	-5 060.77	3 077	538.28	R75	-4 807.86	3 077 736.28
L76	-5 204.90	3 077	431.31	R76	-4 961.74	3 077 641.49
L77	-5 343.57	3 077	315.43	R77	-5 111.27	3 077 538.97
L78	-5 474.34	3 077	197.03	R78	-5 238.77	3 077 445.15
L79	-5 602.43	3 077	069.32	R79	-5 424.47	3 077 287.86
L80	-5 729.18	3 076	932.35	R80	-5 570.44	3 077 149.33
L81	-5 862.26	3 076	765.53	R81	-5 693.56	3 077 017.46
L82	-5 990.26	3 076	590.36	R82	-5 794.99	3 076 900.38
L83	-6 085.66	3 076	441.23	R83	-5 893.65	3 076 776.40
L84	-6 203.72	3 076	232.95	R84	-6 078.77	3 076 511.83
L85	-6 306.54	3 076	019.34	R85	-6 166.88	3 076 362.23
L86	-6 400.82	3 075	785.16	R86	-6 250.80	3 076 206.46
L87	-6 458.79	3 075	611.03	R87	-6 322.06	3 076 057.92
L88	-6 507.83	3 075	438.14	R88	-6 382.45	3 075 916.64
L89	-6 548.04	3 075	263.20	R89	-6 439.60	3 075 765.98
L90	-6 575.23	3 075	111.39	R90	-6 488.29	3 075 618.70
L91	-6 596.61	3 074	962.65	R91	-6 536.76	3 075 446.10
L92	-6 613.68	3 074	783.95	R92	-6 593.96	3 075 184.28
L93	-6 629.34	3 074	495.16	R93	-6 621.45	3 075 006.21
L94	-6 564.26	3 074	391.68	R94	-6 643.09	3 074 786.24
L95	-6 640.49	3 074	296.53	R95	-6 655.53	3 074 582.58
L96	-6 649.69	3 074	123.53	R96	-6 678.46	3 074 149.08
L97	-6 987.82	3 067	957.63	R97	-6 684.40	3 074 039.12
L98	-6 954.50	3 067	794.33	R98	-6 749.76	3 073 941.98
L99	-6 963.57	3 067	761.38	R99	-6 695.73	3 073 827.81
L100	-7 006.12	3 067	625.37	R100	-7 016.94	3 067 972.35
L101	-7 069.33	3 066	470.14	R101	-7 045.92	3 067 824.35
				R102	-7 059.16	3 067 798.74
				Vel Sheet	9 of	Van 10 P1212/20

This gazette is also available free online at [www.gpwonline.co.za](http://www.gpwonline.co.za)