
GOVERNMENT NOTICES • GOEWERMENTSKENNISGEWINGS

DEPARTMENT OF TRANSPORT

NO. 6257

30 May 2025

DEPARTMENT OF TRANSPORT**THE SOUTH AFRICAN NATIONAL ROADS
AGENCY SOC LIMITED**Registration No: 1998/009584/30

DECLARATION AMENDMENT OF NATIONAL ROAD R389 SECTION 2

AMENDMENT OF DECLARATION No. 2670 OF 2022.

By virtue of section 40(1)(b) of the South African National Roads Agency Limited and the National Roads Act 1998 (Act No. 7 of 1998), I hereby amend Declaration No. 2670 of 2022 by substituting paragraph O of the Schedule, being the descriptive declaration of the route from Hanover up to Philipstown, with the accompanying sheets 1 to 15 of Plan No. P1249/24.

The R389 Section 2 enters the town of Philipstown along the street known as Green Street, at time of declaration, up to the intersection with the street known as Church Street, at time of declaration.

(National Road R389 Section 2: Hanover – Philipstown)
MINISTER OF TRANSPORT

DEPARTEMENT VAN VERVOER

NO. 6257

30 Mei 2025

DEPARTEMENT VAN VERVOER

**DIE SUID-AFRIKAANSE NASIONALE
PADAGENTSKAP MSB BEPERK**

Registrasie No: 1998/009584/30

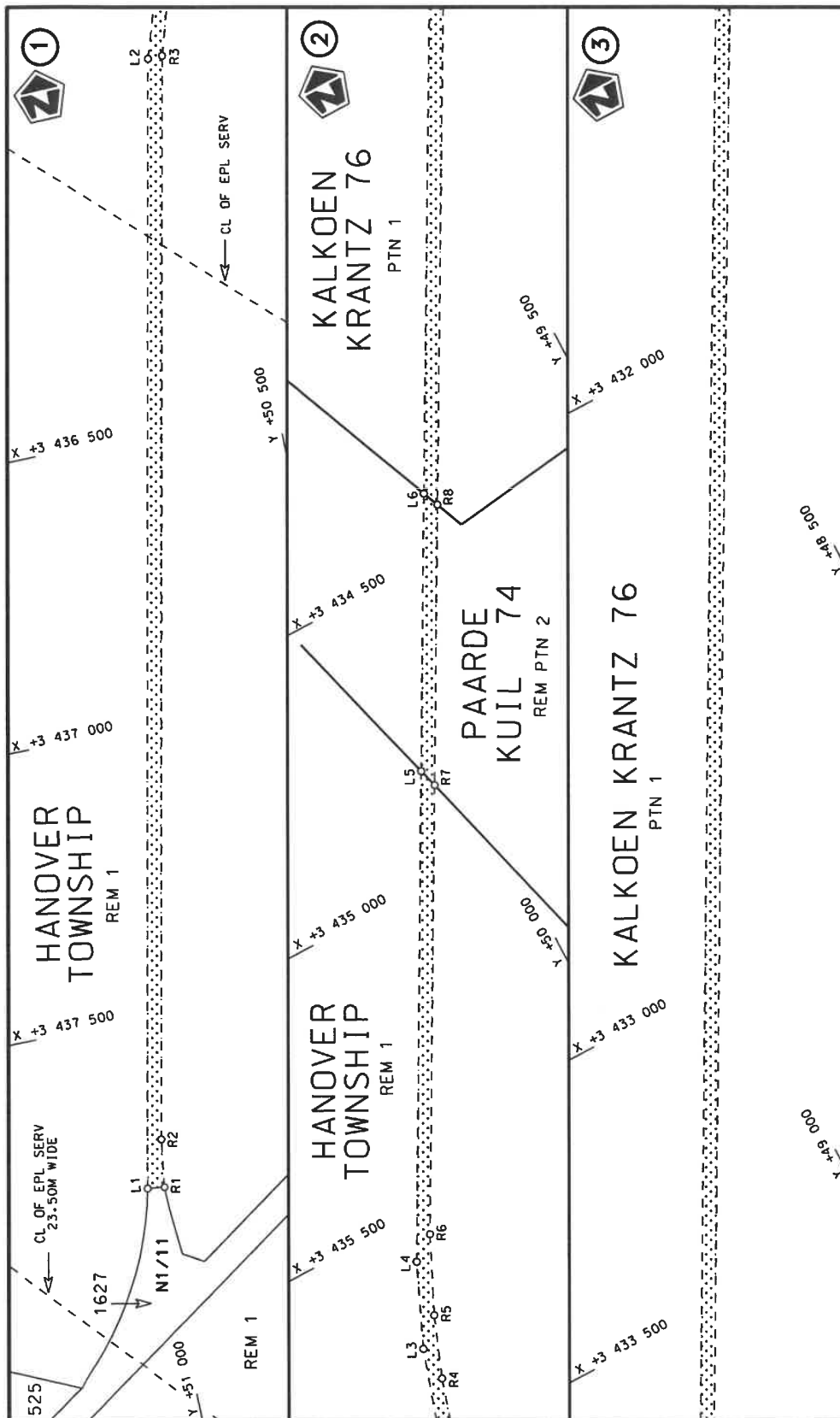
VERKLARING WYSIGING VAN NASIONALE PAD R389 SEKSIE 2

WYSIGING VAN VERKLARING No. 2670 VAN 2022.

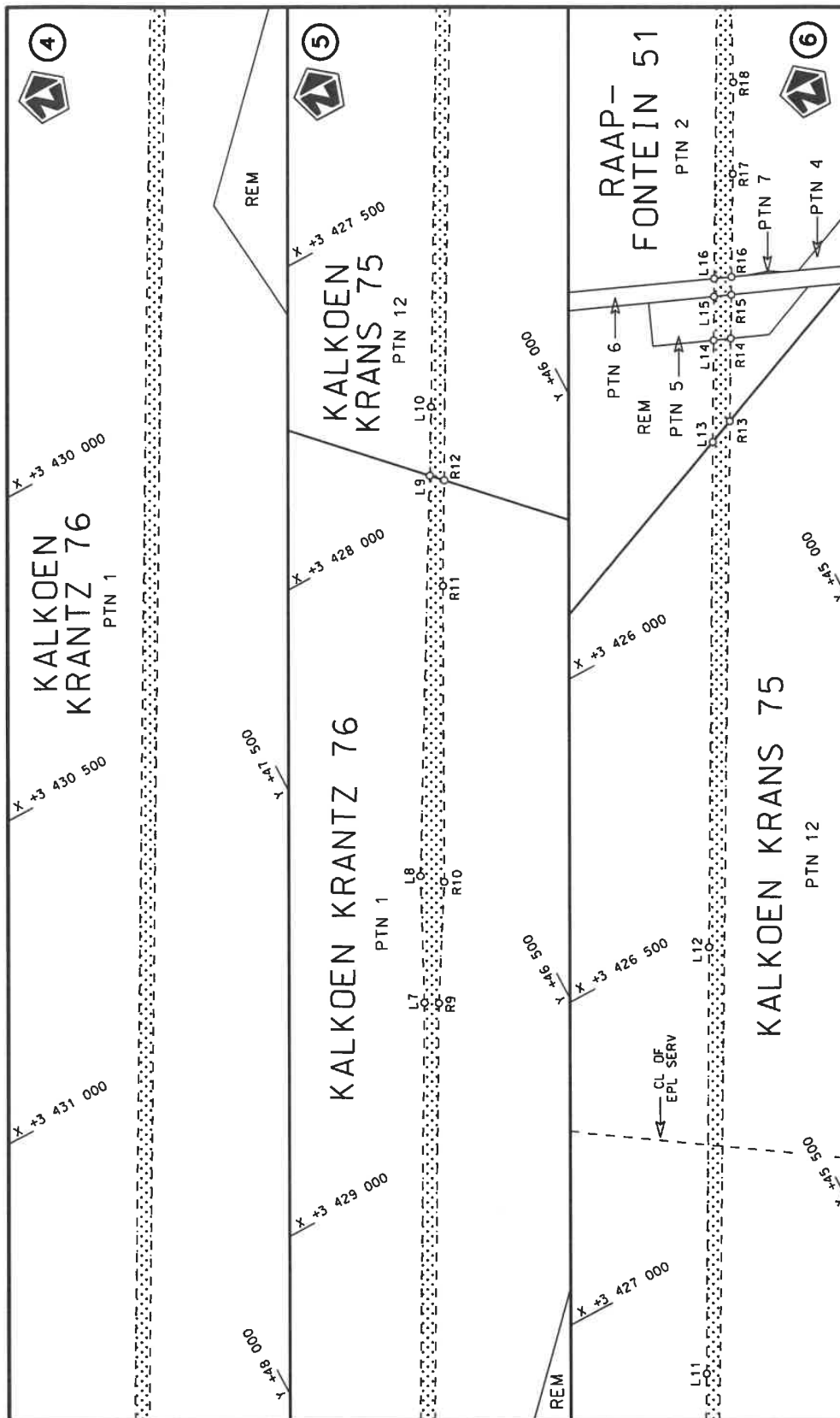
Kragtens Artikel 40(1)(b) van die Suid-Afrikaanse Nasionale Padagentskap Beperk en Nasionale Paaie Wet 1998 (Wet No. 7 van 1998), wysig ek hiermee Verklaring No. 2670 van 2022 deur paragraaf O van die Skedule te vervang, synde die gedeelte van die beskrywende verklaring van die pad vanaf Hanover tot by Philipstown, met bygaande velle 1 tot 15 van Plan No. P1249/24.


Die R389 Seksie 2 kom die dorp van Philipstown binne langs die straat bekend as Groenstraat, tydens datum van verklaring, tot by die interseksie met Kerkstraat, tydens datum van verklaring.

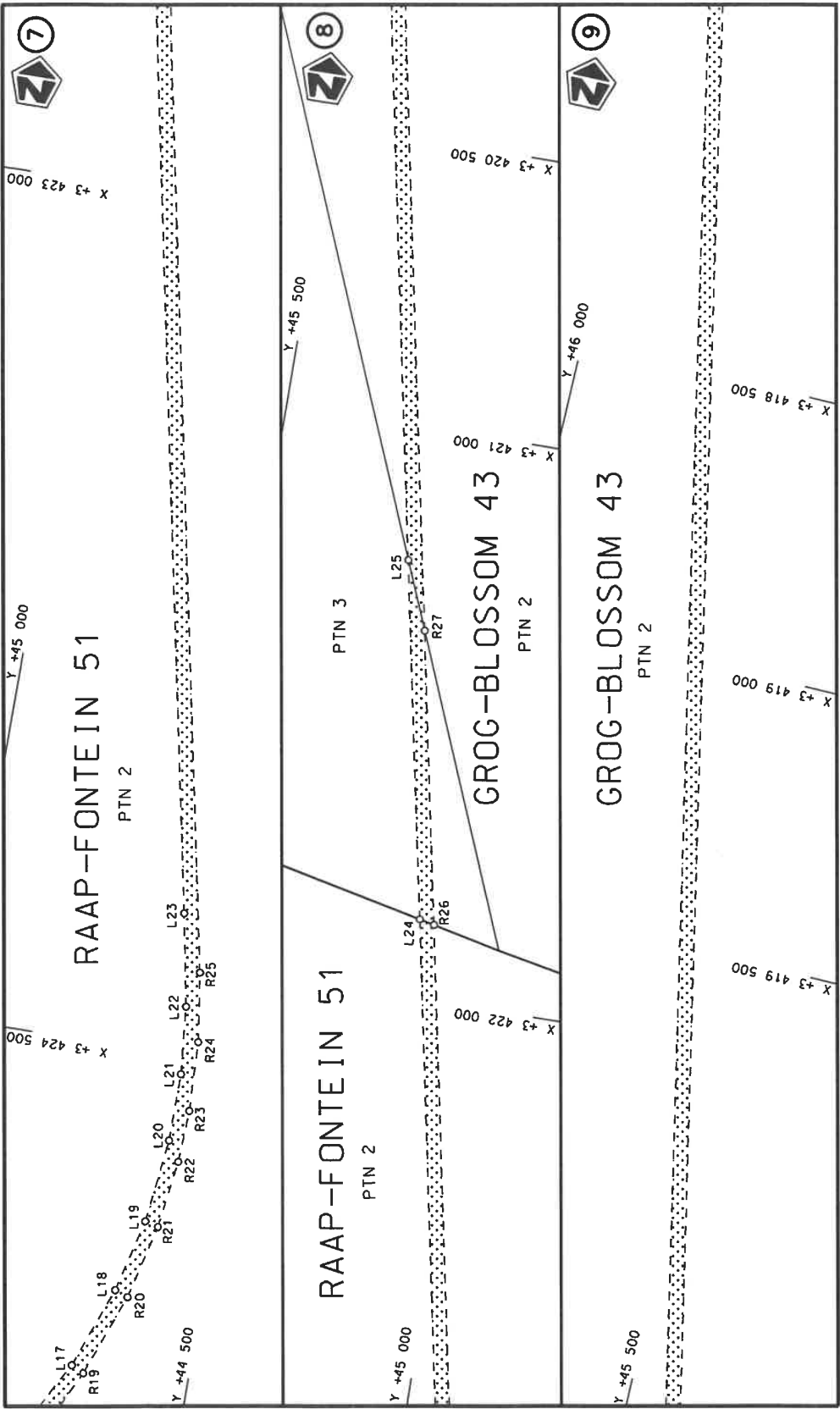
(Nasionale Pad R389 Seksie 2: Hanover – Philiptown)
MINISTER VAN VERVOER

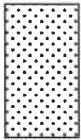


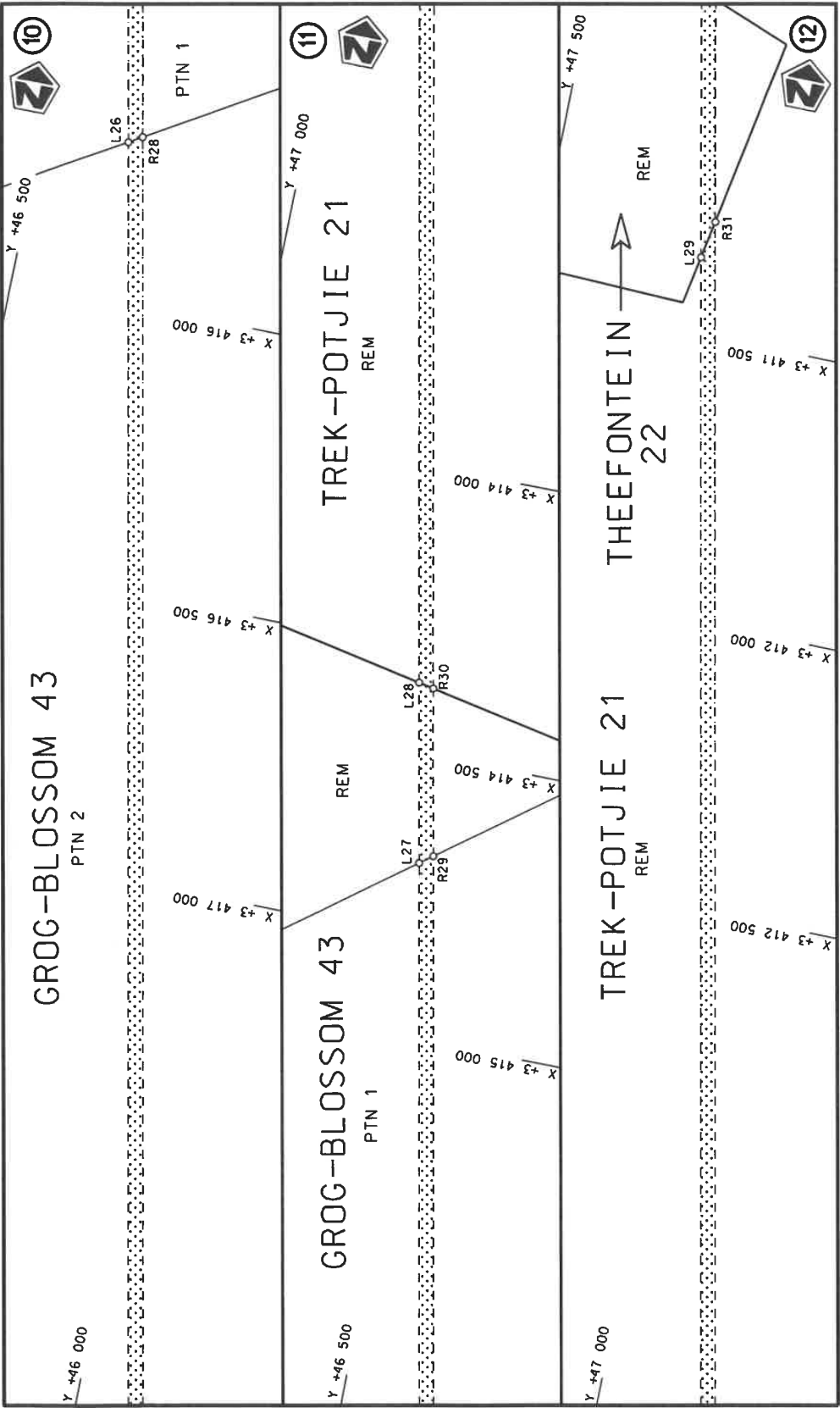
Die Suid Afrikaanse Nasionale Padagentskap MSB Bpk The South African National Roads Agency SOC Ltd	Die figuur getoon The figure shown	stel die padreserwe voor van 'n gedeelte represents the road reserve of a portion of Nasionale Roete R389 of National Route	Vel Sheet 1 of 15 Plan P1249/24
---	---------------------------------------	--	---------------------------------------



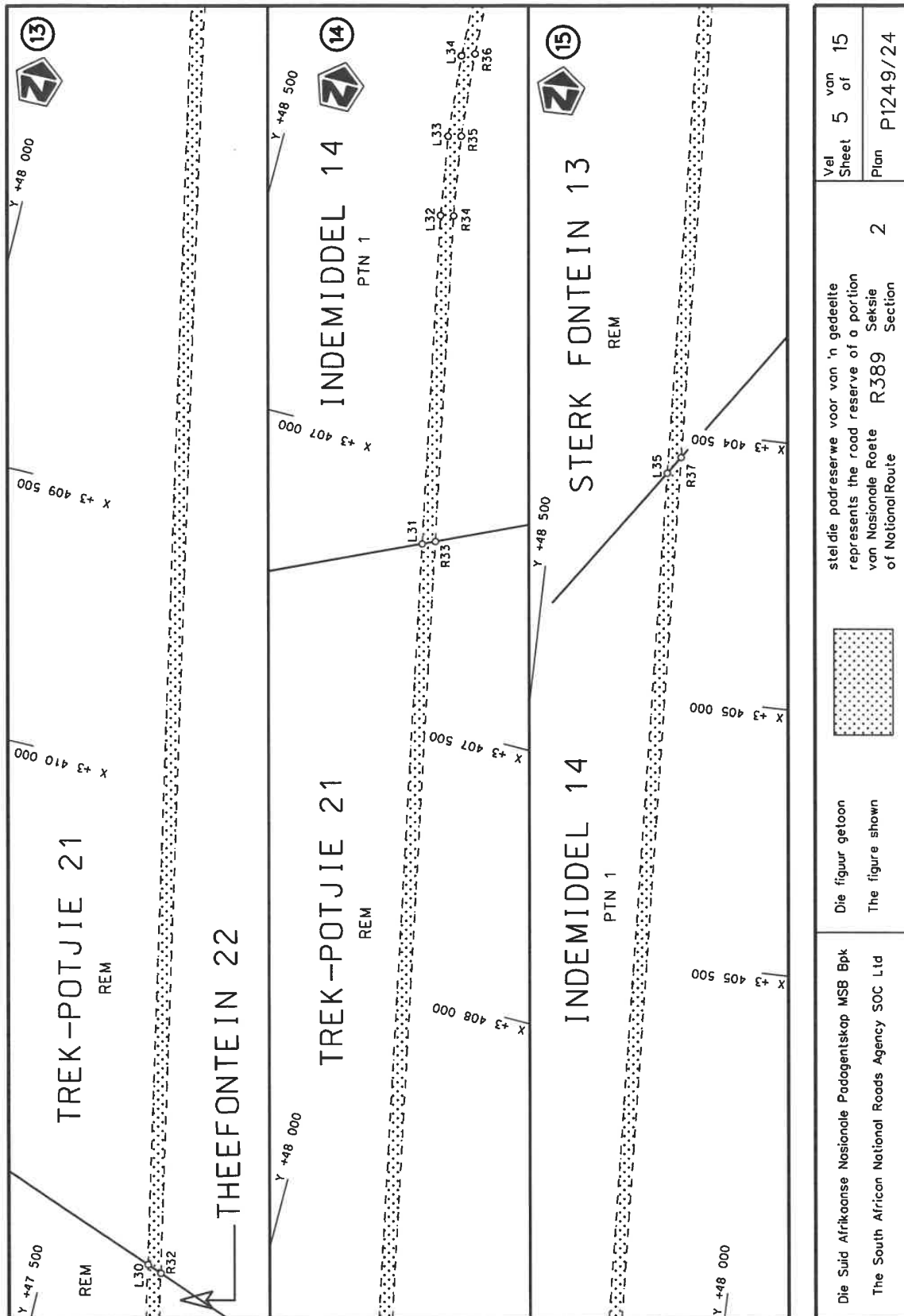
Die Suid-Afrikaanse Nasionale Padagentskap MSB Bpk The South African National Roads Agency SOC Ltd	Die figuur getoon The figure shown	 <p>stel die padreserwe voor van 'n gedeelte represents the road reserve of a portion van Nasionale Roete R389 of National Route</p>	Vel Sheet 2 of 15 Plan P1249/24
---	---------------------------------------	---	---------------------------------------

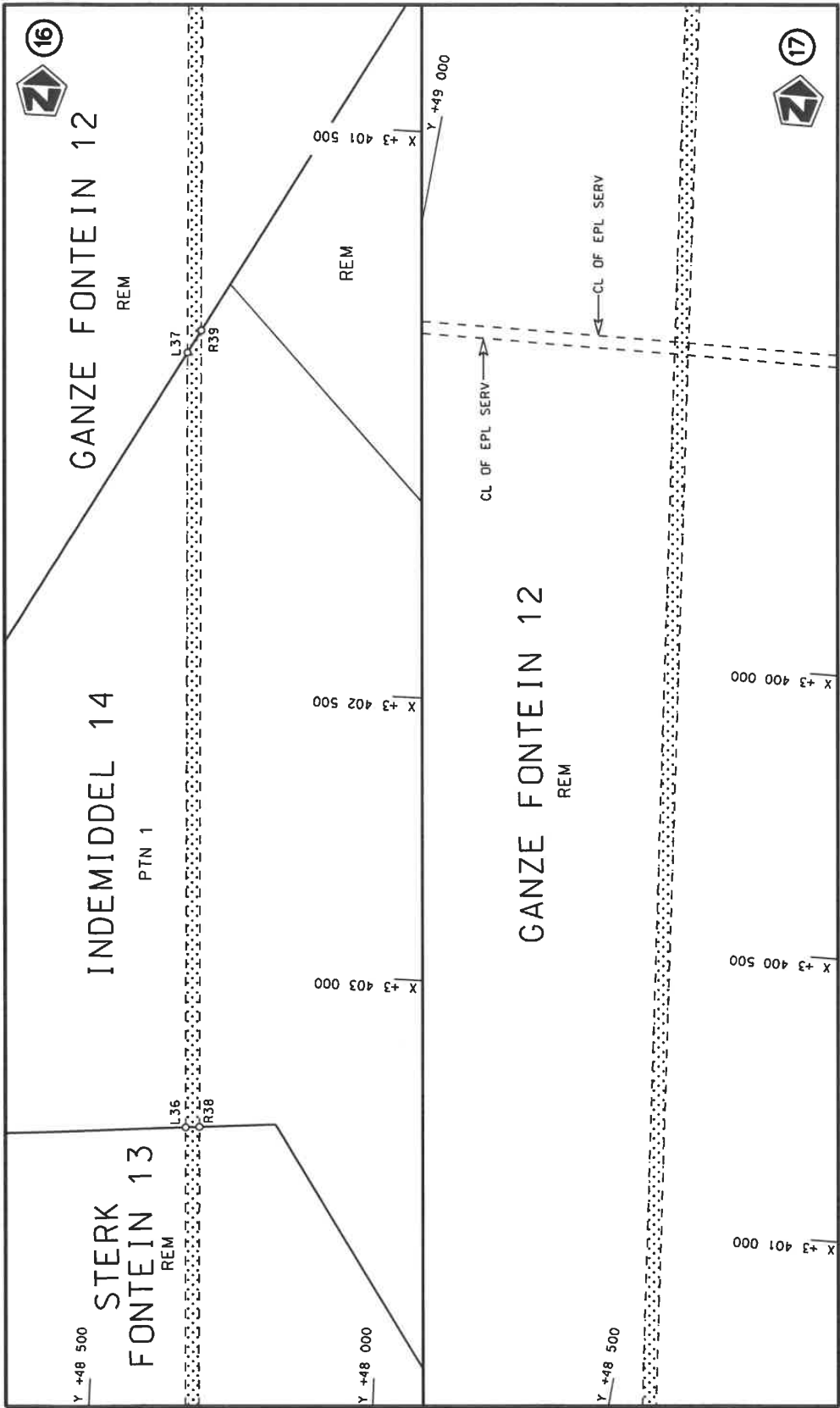



Die Suid Afrikaanse Nasionale Padagentskap MSB Bpk The South African National Roads Agency SOC Ltd	Die figuur getoon The figure shown		stel die podreserwe voor van 'n gedeelte represents the road reserve of a portion van Nasionale Roete R389 of National Route	2	Val Sheet 3 of 15 Plan P1249/24
---	---------------------------------------	---	---	---	---------------------------------------

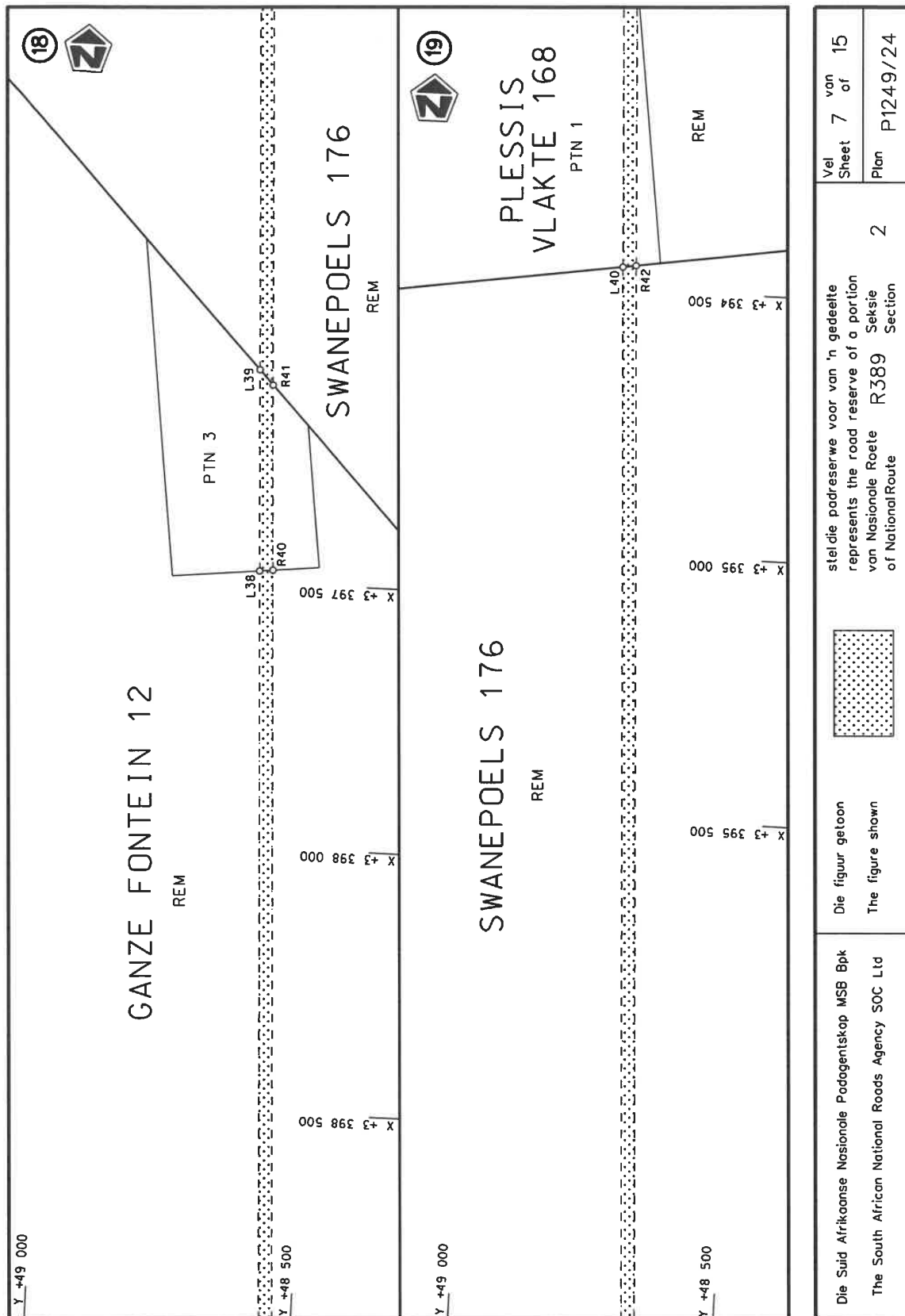


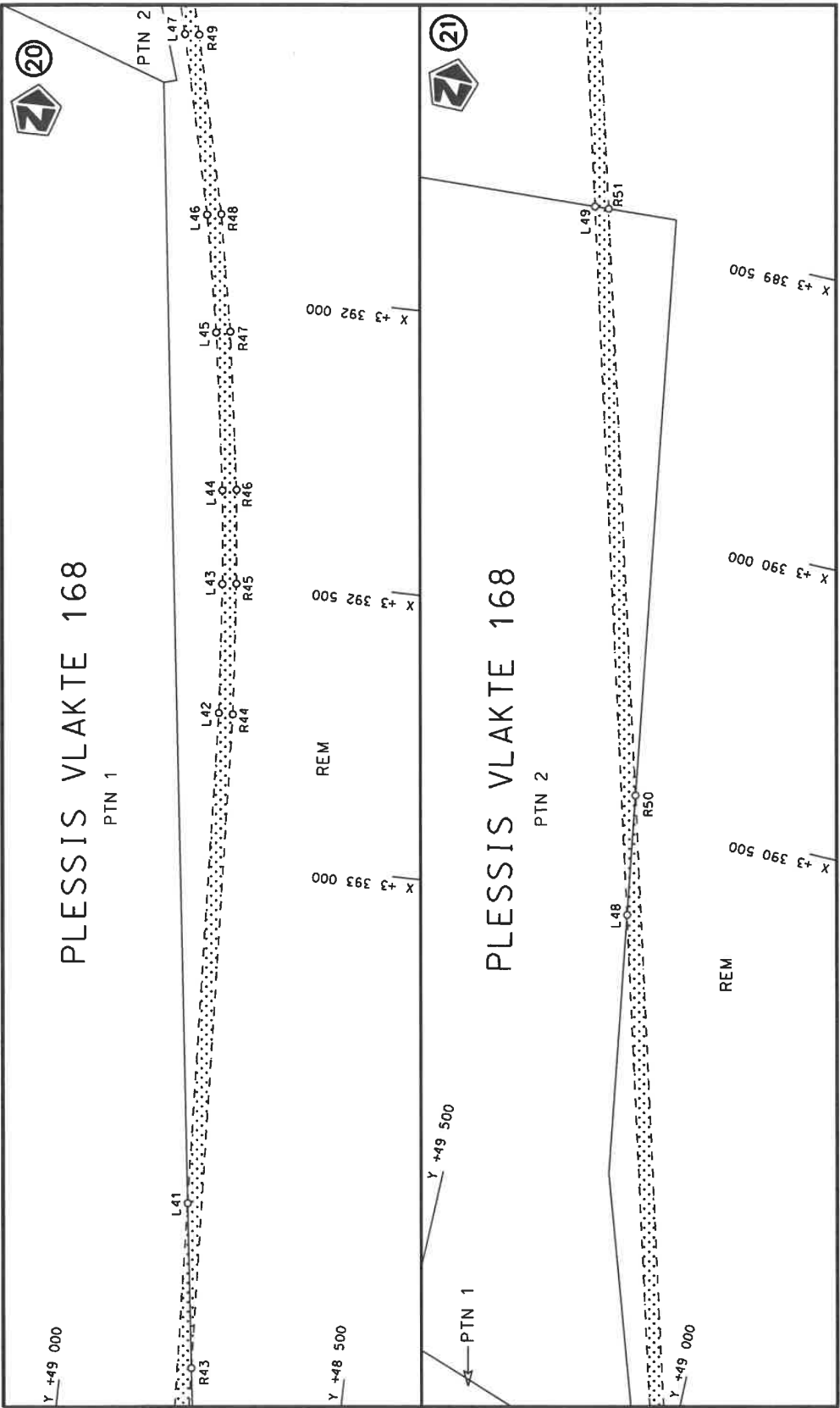
Die Suid Afrikaanse Nasionale Padagentskap MSB Bpk The South African National Roads Agency SOC Ltd	Die figuur getoon The figure shown		stel die padreserwe voor van 'n gedeelte represents the road reserve of a portion van Nasionale Roete R389 of National Route	Vel Sheet	4 of	15
				Plan	P1249/24	

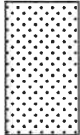


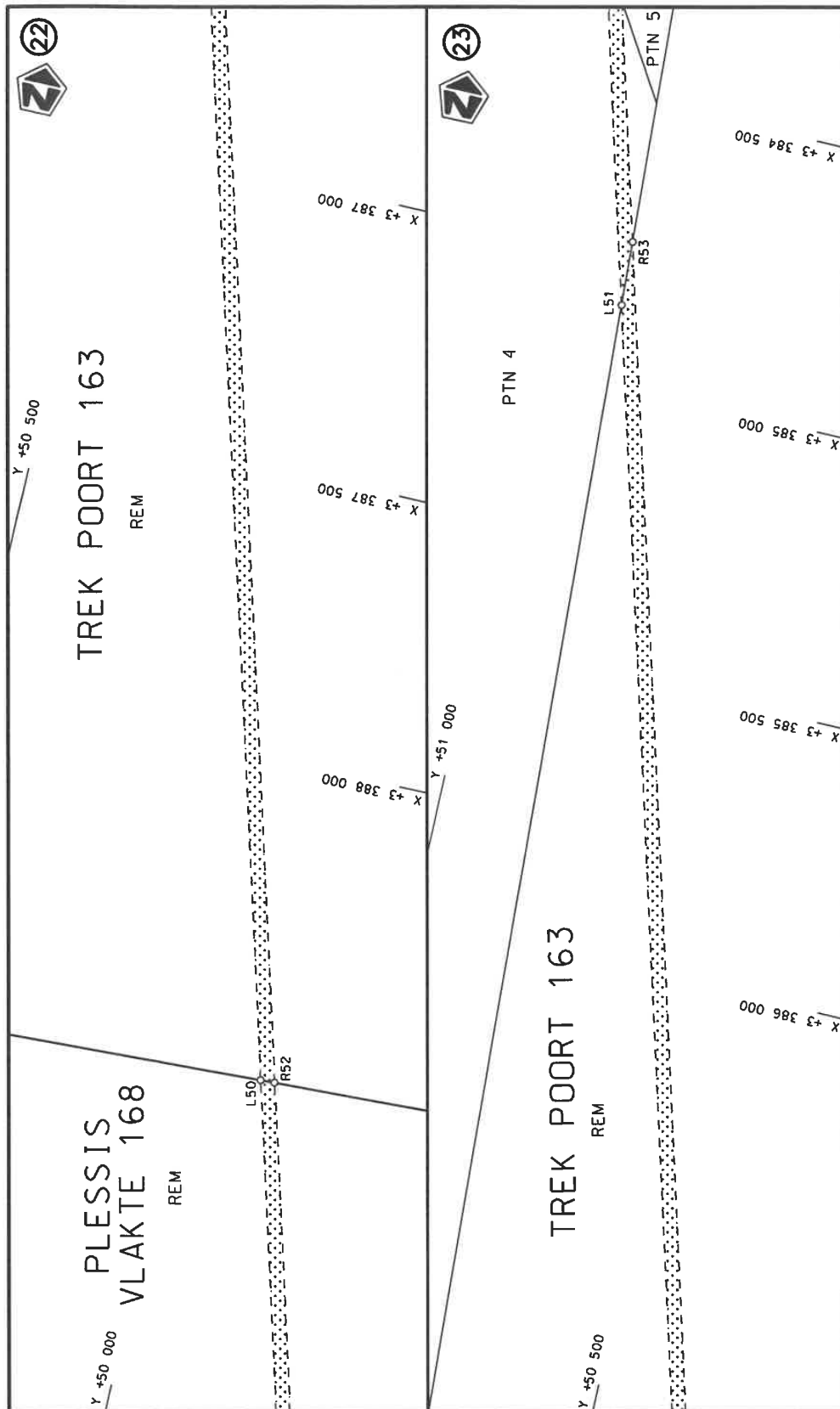



Die Suid Afrikaanse Nasionale Padagentskap MSB Bpk The South African National Roads Agency SOC Ltd			Die figuur getoon The figure shown		steldie padreserwe voor van 'n gedeelte represents the road reserve of a portion van Nasionale Roete R389 of National Route		2	Vel Sheet 6 of 15	
								Plan P1249/24	

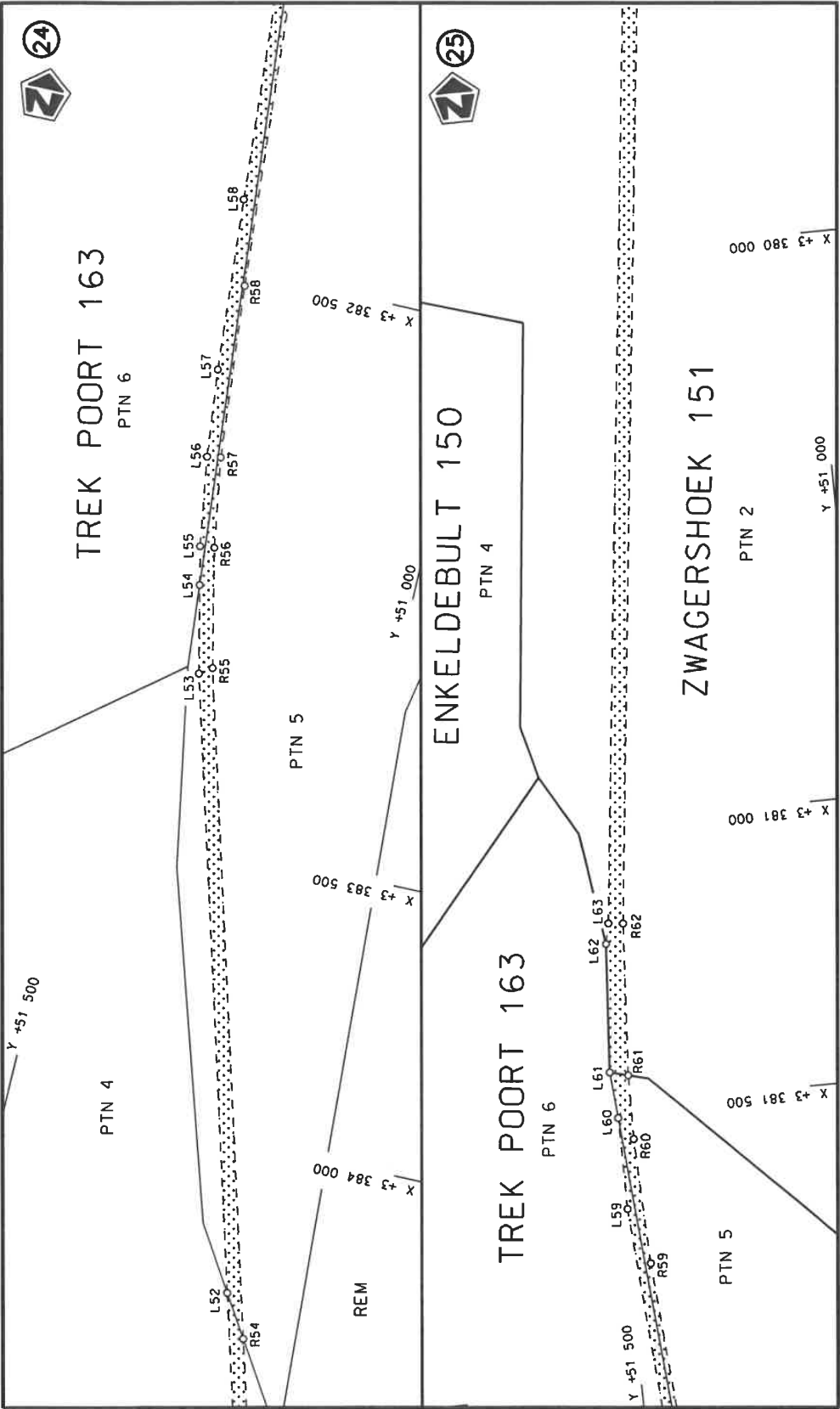


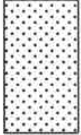


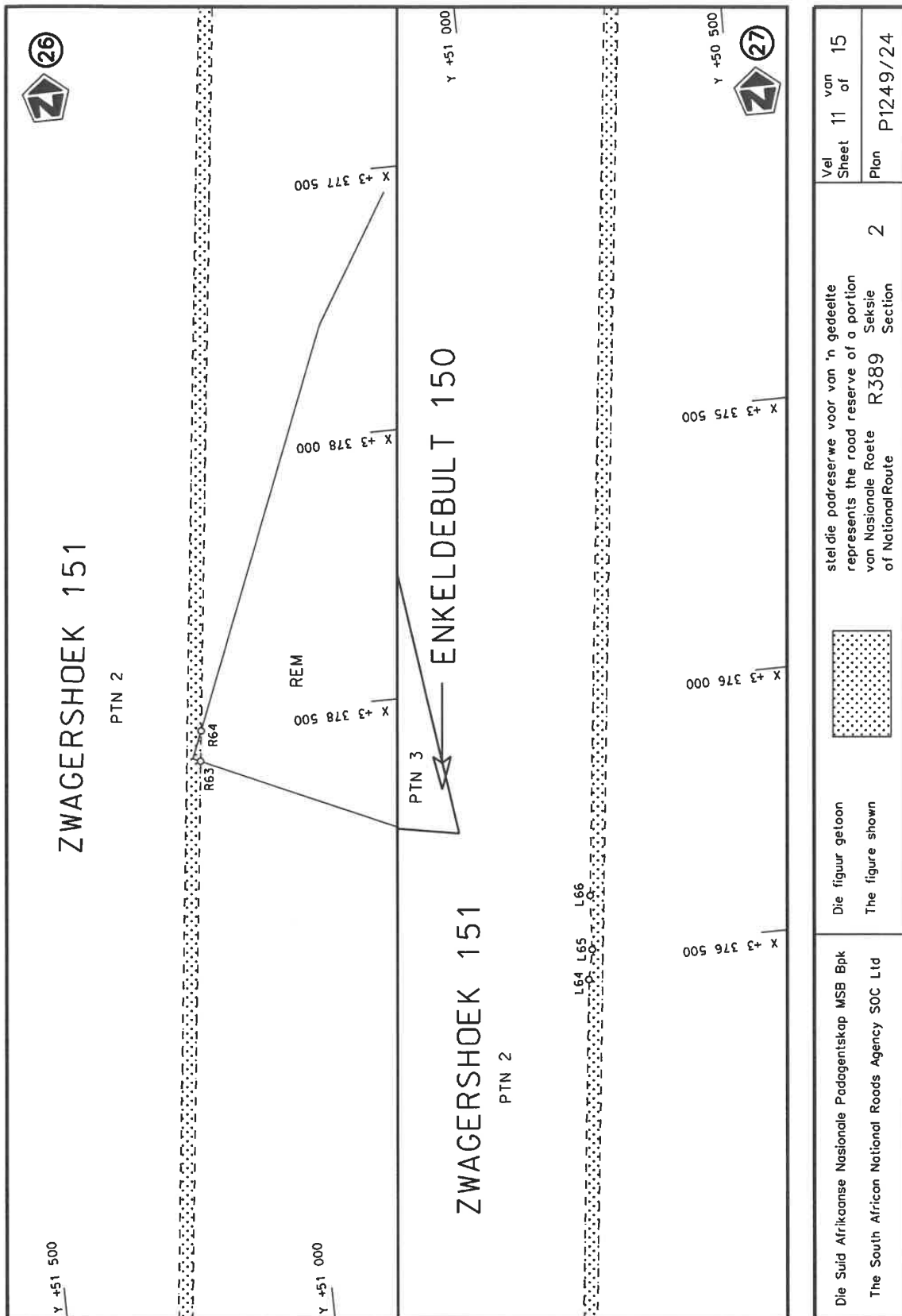
Die Suid Afrikaanse Nasionale Padagentskop MSB Bpk The South African National Roads Agency SOC Ltd	Die figuur getoon The figure shown		stel die padreserwe voor van 'n gedeelte represents the road reserve of a portion van Nasionale Roete R389 Seksie of National Route Section	2	Vel Sheet 8 of 15
					Plan P1249/24

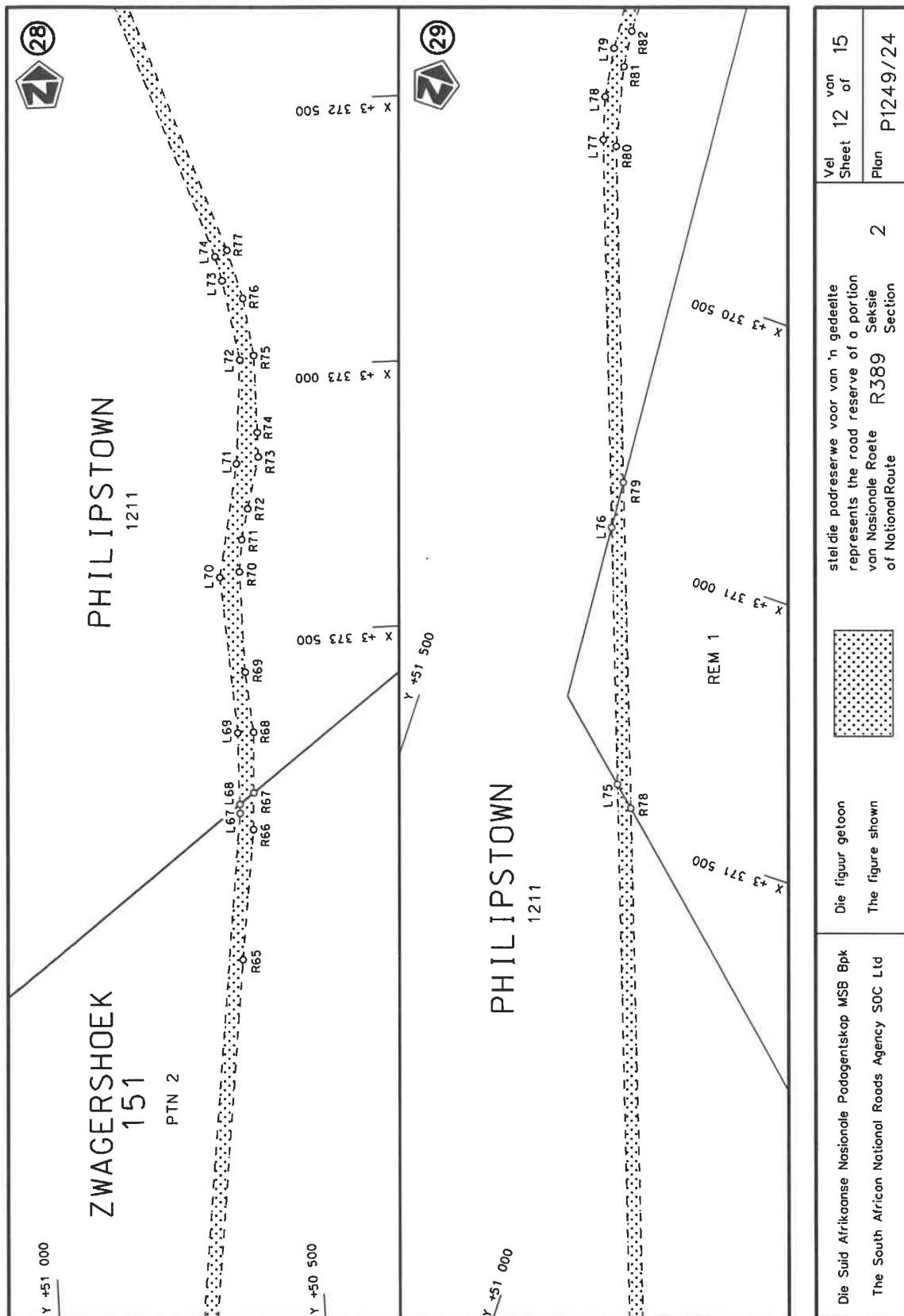


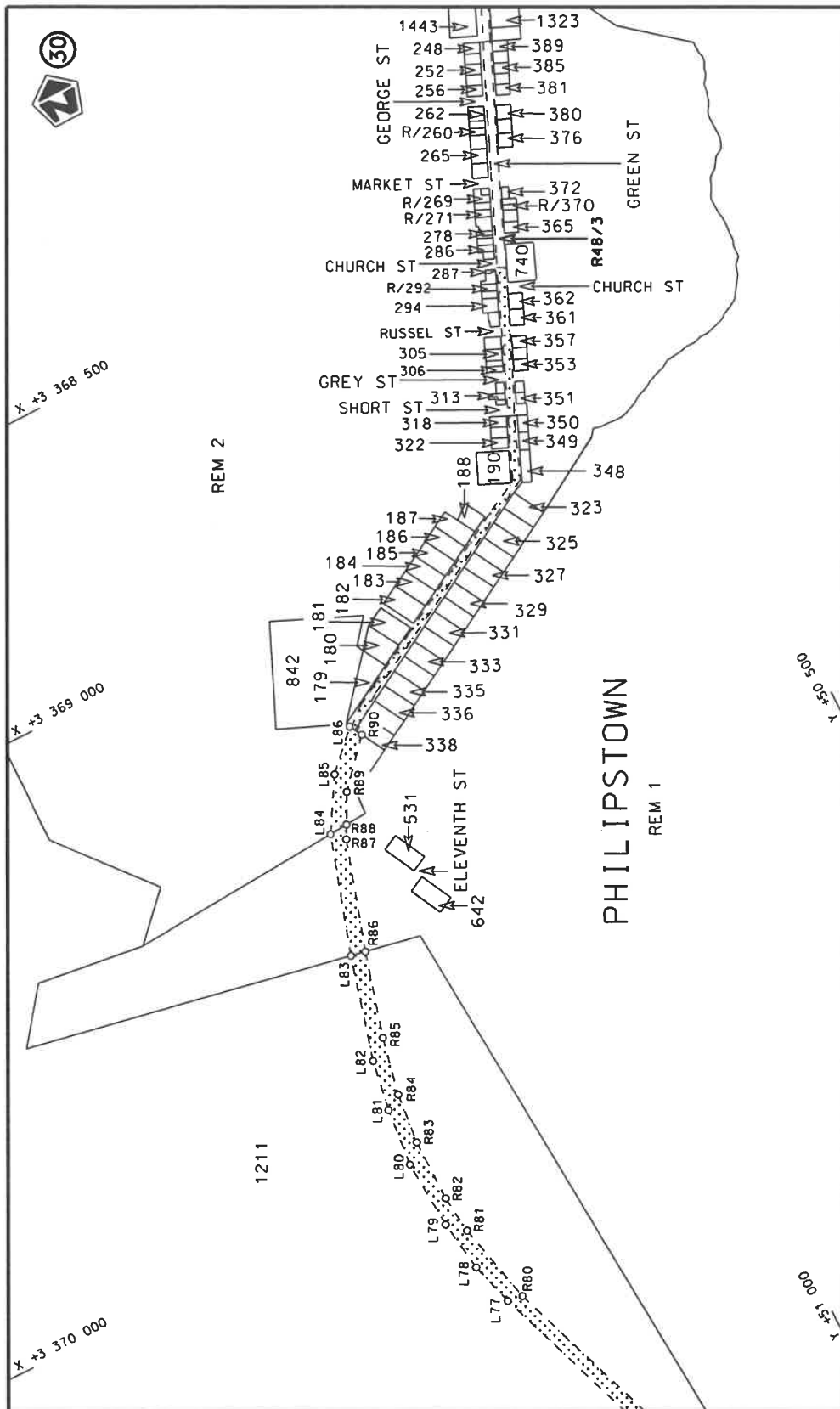
Die Suid Afrikaanse Nasionale Padagentskap MSB Bpk The South African National Roads Agency SOC Ltd	Die figuur getoon The figure shown		steldie padreserwe voor van 'n gedeelte represents the road reserve of a portion van Nasionale Roete R389 of National Route	Vel Sheet 9 of 15 Plan P1249/24
			2	




Die Suid Afrikaanse Nasionale Padagentskap MSB Bpk The South African National Roads Agency SOC Ltd	Die figuur getoon The figure shown		steldie padreserwe voor van 'n gedeelte represents the road reserve of a portion van Nasionale Roete R389 of National Route	2	Vel Sheet 10 of 15 Plan P1249/24







Die Suid Afrikaanse Nasionale Padagentskap MSB Bpk The South African National Roads Agency SOC Ltd	Die figuur getoon The figure shown		stel die padreserwe voor van 'n gedeelte represents the road reserve of a portion van Nasionale Roete R389 of National Route 2	Vel Sheet 13 of 15	Plan P1249/24
---	---------------------------------------	---	---	-----------------------	---------------

PADRESERWE KOÖRDINATE / ROAD RESERVE CO-ORDINATES						
LINKERKANT/LEFT HAND SIDE				REGTERKANT/RIGHT HAND SIDE		
	Y	X	WG 25°		Y	X
L1	51 008.94	3 437 796.30		R1	50 979.28	3 437 799.79
L2	50 593.51	3 435 858.46		R2	50 966.60	3 437 715.69
L3	50 545.73	3 435 713.06		R3	50 568.14	3 435 858.48
L4	50 483.29	3 435 572.89		R4	50 541.68	3 435 774.30
L5	50 069.10	3 434 818.64		R5	50 501.22	3 435 669.84
L6	49 833.96	3 434 391.43		R6	50 440.22	3 435 541.00
L7	46 726.02	3 428 749.45		R7	50 060.22	3 434 851.50
L8	46 626.69	3 428 550.26		R8	49 822.35	3 434 419.89
L9	46 281.13	3 427 940.42		R9	46 704.18	3 428 762.04
L10	46 221.18	3 427 834.62		R10	46 595.37	3 428 578.65
L11	45 863.18	3 427 186.20		R11	46 351.46	3 428 120.70
L12	45 504.53	3 426 528.47		R12	46 262.60	3 427 959.52
L13	45 079.65	3 425 752.38		R13	45 036.03	3 425 734.65
L14	44 994.12	3 425 596.15		R14	44 966.08	3 425 607.76
L15	44 957.34	3 425 528.95		R15	44 929.08	3 425 540.66
L16	44 942.26	3 425 501.41		R16	44 913.97	3 425 513.25
L17	44 706.56	3 425 070.87		R17	44 826.49	3 425 354.56
L18	44 652.67	3 424 926.98		R18	44 750.00	3 425 213.50
L19	44 620.45	3 424 798.13		R19	44 684.13	3 425 081.35
L20	44 602.51	3 424 649.95		R20	44 629.17	3 424 935.72
L21	44 601.37	3 424 530.48		R21	44 596.82	3 424 804.25
L22	44 611.94	3 424 411.01		R22	44 580.22	3 424 684.51
L23	44 642.47	3 424 248.39		R23	44 575.80	3 424 592.27
L24	45 119.35	3 421 862.19		R24	44 580.19	3 424 469.39
L25	45 244.05	3 421 238.25		R25	44 597.46	3 424 347.41
L26	46 346.78	3 415 720.43		R26	45 092.93	3 421 867.85
L27	46 552.08	3 414 693.14		R27	45 195.07	3 421 356.72
L28	46 614.65	3 414 380.09		R28	46 324.07	3 415 706.78
L29	47 217.00	3 411 366.05		R29	46 529.97	3 414 676.34
L30	47 309.23	3 410 904.54		R30	46 588.12	3 414 385.35
L31	48 054.42	3 407 172.80		R31	47 204.71	3 411 299.70
L32	48 176.08	3 406 563.57		R32	47 281.56	3 410 915.09
L33	48 199.86	3 406 415.78		R33	48 031.47	3 407 162.27
L34	48 213.39	3 406 262.93		R34	48 152.11	3 406 558.52
L35	48 292.36	3 404 583.17		R35	48 175.98	3 406 409.25
L36	48 353.59	3 403 280.73		R36	48 189.86	3 406 253.11
L37	48 417.98	3 401 911.05		R37	48 269.74	3 404 550.75
L38	48 626.39	3 397 478.09		R38	48 329.43	3 403 278.73
L39	48 644.22	3 397 098.76		R39	48 395.49	3 401 870.88
L40	48 768.36	3 394 458.04		R40	48 601.73	3 397 475.50
L41	48 807.99	3 393 615.04		R41	48 618.15	3 397 126.19
L42	48 848.88	3 392 745.25		R42	48 743.78	3 394 454.37
L43	48 867.65	3 392 517.90		R43	48 769.63	3 393 904.75
L44	48 885.66	3 392 353.41		R44	48 824.16	3 392 744.93
L45	48 927.27	3 392 077.53		R45	48 843.20	3 392 514.95
L46	48 965.98	3 391 872.48		R46	48 861.06	3 392 349.79
L47	49 039.81	3 391 560.19		R47	48 902.71	3 392 073.32
L48	49 282.94	3 390 676.28		R48	48 941.37	3 391 868.98
L49	49 615.48	3 389 467.33		R49	49 014.92	3 391 558.36
L50	49 865.00	3 388 560.19		R50	49 315.33	3 390 466.83
L51	50 883.06	3 384 859.03		R51	49 590.80	3 389 465.88
				Vel Sheet	14 Van of 15	P1249/24

PADRESERVE KOÖRDINATE / ROAD RESERVE CO-ORDINATES									
LINKERKANT/LEFT HAND SIDE					REGTERKANT/RIGHT HAND SIDE				
	Y		X	WG 25°		Y		X	
L52	51 046.01	3	384	266.63	R52	49 840.36	3	388	559.13
L53	51 336.69	3	383	209.85	R53	50 888.94	3	384	746.27
L54	51 369.75	3	383	057.53	R54	51 000.73	3	384	339.58
L55	51 384.31	3	382	990.44	R55	51 315.35	3	383	195.01
L56	51 407.39	3	382	833.43	R56	51 359.42	3	382	987.22
L57	51 422.78	3	382	679.38	R57	51 383.07	3	382	829.60
L58	51 444.72	3	382	376.85	R58	51 409.02	3	382	525.39
L59	51 492.86	3	381	682.72	R59	51 462.03	3	381	782.14
L60	51 493.03	3	381	522.24	R60	51 469.44	3	381	560.69
L61	51 499.60	3	381	440.43	R61	51 467.57	3	381	448.91
L62	51 482.88	3	381	214.01	R62	51 449.48	3	381	180.04
L63	51 474.94	3	381	177.22	R63	51 144.48	3	378	580.31
L64	50 932.67	3	376	555.52	R64	51 137.81	3	378	523.41
L65	50 920.76	3	376	499.49	R65	50 620.78	3	374	116.35
L66	50 914.27	3	376	397.66	R66	50 589.73	3	373	871.18
L67	50 614.00	3	373	840.17	R67	50 586.41	3	373	802.50
L68	50 613.61	3	373	823.33	R68	50 580.83	3	373	687.43
L69	50 610.51	3	373	687.35	R69	50 591.28	3	373	573.40
L70	50 630.53	3	373	392.41	R70	50 593.22	3	373	383.54
L71	50 589.30	3	373	179.56	R71	50 586.11	3	373	322.91
L72	50 574.02	3	372	983.89	R72	50 572.06	3	373	265.13
L73	50 600.37	3	372	833.05	R73	50 547.98	3	373	168.45
L74	50 611.55	3	372	787.18	R74	50 547.38	3	373	122.04
L75	51 093.57	3	371	424.18	R75	50 547.65	3	372	976.61
L76	51 255.44	3	370	966.47	R76	50 563.02	3	372	868.17
L77	51 499.61	3	370	276.02	R77	50 588.63	3	372	776.06
L78	51 521.72	3	370	197.99	R78	51 055.30	3	371	459.21
L79	51 534.77	3	370	106.05	R79	51 261.01	3	370	878.75
L80	51 542.07	3	369	983.26	R80	51 472.91	3	370	280.02
L81	51 531.02	3	369	880.99	R81	51 506.12	3	370	133.00
L82	51 515.20	3	369	791.30	R82	51 513.34	3	370	064.89
L83	51 464.75	3	369	608.33	R83	51 513.32	3	369	953.95
L84	51 398.54	3	369	401.09	R84	51 503.59	3	369	863.95
L85	51 343.47	3	369	310.67	R85	51 481.37	3	369	762.78
L86	51 281.31	3	369	248.01	R86	51 438.98	3	369	613.40
					R87	51 377.89	3	369	421.91
					R88	51 365.73	3	369	398.94
					R89	51 338.72	3	369	347.95
					R90	51 269.02	3	369	270.39

Printed by and obtainable from the Government Printer, Bosman Street, Private Bag X85, Pretoria, 0001
Contact Centre Tel: 012-748 6200. eMail: info.egazette@gpw.gov.za
Publications: Tel: (012) 748 6053, 748 6061, 748 6065