
GOVERNMENT NOTICES • GOEWERMENTSKENNISGEWINGS

DEPARTMENT OF TRANSPORT

NO. 6253

30 May 2025

**THE SOUTH AFRICAN NATIONAL ROADS
AGENCY SOC LIMITED****Registration No: 1998/009584/30**

DECLARATION AMENDMENT OF NATIONAL ROAD N11 SECTION 2

AMENDMENT OF DECLARATION No. 315 OF 2018.

By virtue of section 40(1)(b) of the South African National Roads Agency Limited and the National Roads Act, 1998 (Act No. 7 of 1998), I hereby amend Declaration No. 315 of 2018 by substituting it in its entirety, with the accompanying sheets 1 to 18 of Plan No. P1170/19.

In the town of Ladysmith the route enters the town along N11 Section 2 from the West and follows the streets known as Lyell Street and Newcastle Road at the time of declaration.

(National Road N11 Section 2: Ladysmith Interchange – Nkunzi River)
MINISTER OF TRANSPORT

DEPARTEMENT VAN VERVOER

NO. 6253

30 Mei 2025

**DIE SUID-AFRIKAANSE NASIONALE
PADAGENTSKAP MSB BEPERK**

Registrasie No: 1998/009584/30

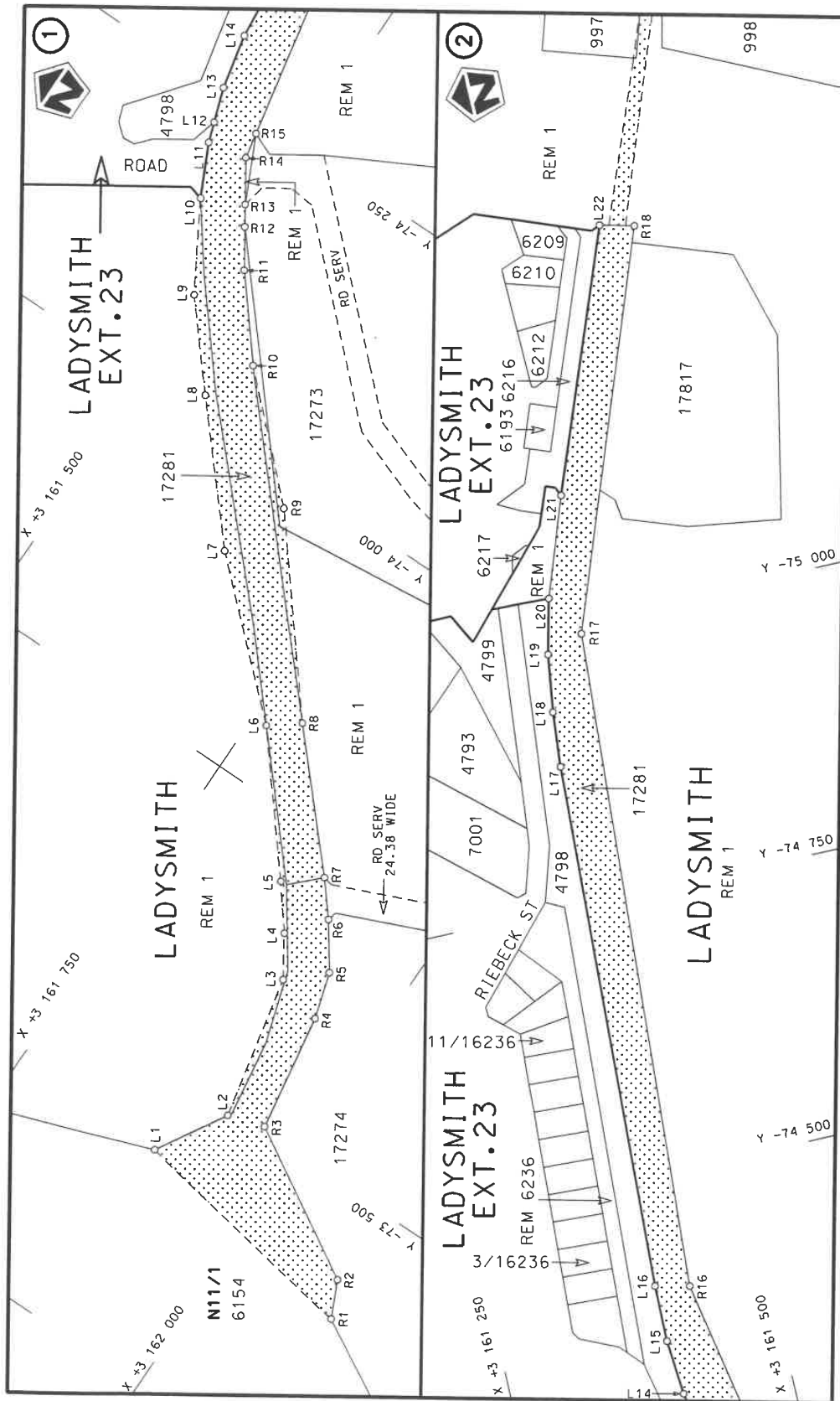
VERKLARING WYSIGING VAN NASIONALE PAD N11 SEKSIE 2


WYSIGING VAN VERKLARING No. 315 VAN 2018.

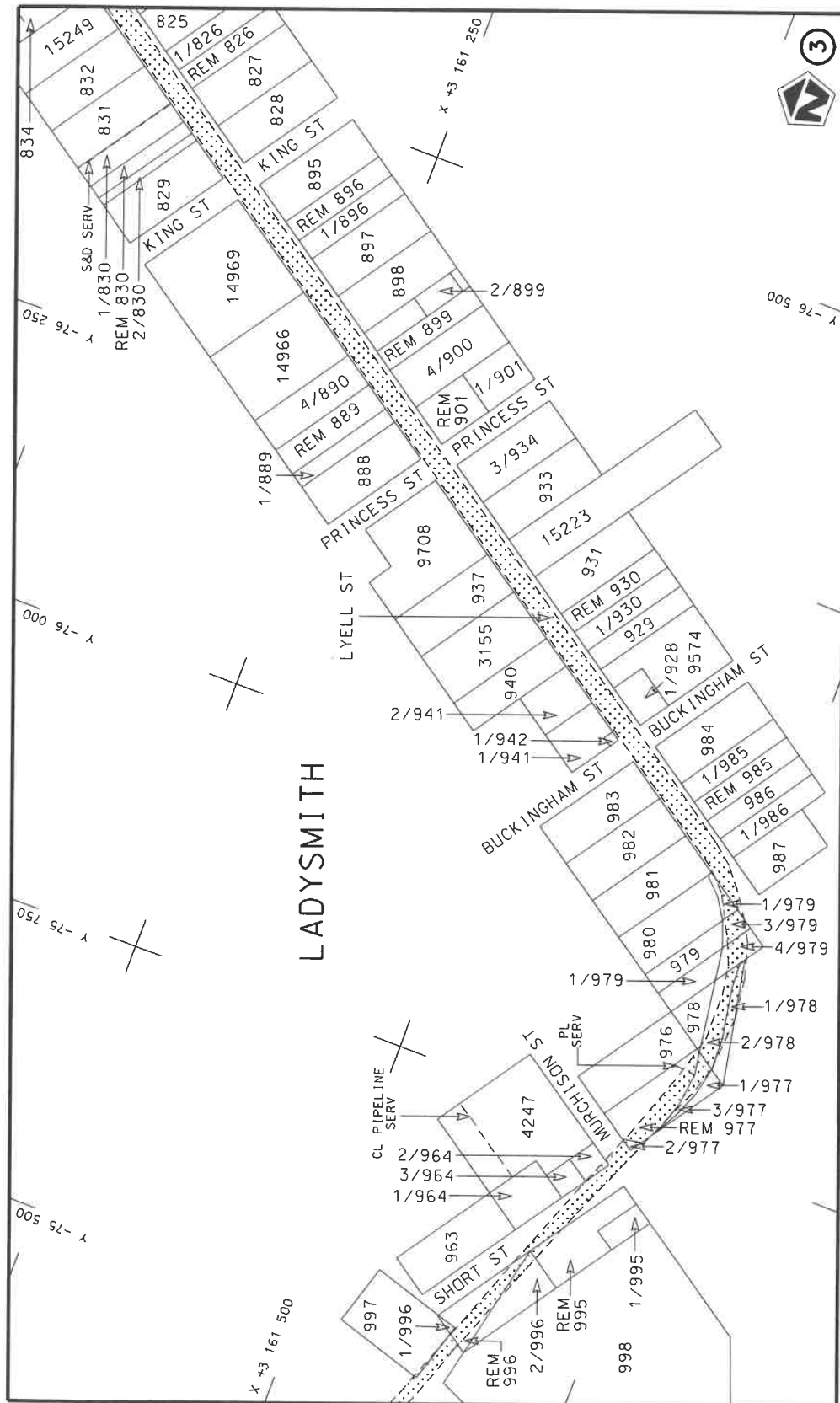
Kragtens Artikel 40(1)(b) van die Wet op die Suid-Afrikaanse Nasionale Padagentskap Beperk en op Nasionale Paaie, Wet 1998 (Wet No. 7 van 1998), wysig ek hiermee Verklaring No. 315 van 2018 deur dit in sy geheel te vervang, met bygaande velle 1 tot 18 van Plan No. P1170/19.

In die dorp van Ladysmith kom die pad die dorp binne vanuit die Weste langs die N11 Seksie 2 en volg die strate bekend as Lyellstraat en Newcastleweg tydens datum van verklaring.

(Nasionale Pad N11 Seksie 2: Ladysmith Wisselaar – Nkunzi Rivier)
MINISTER VAN VERVOER



Die Suid Afrikaanse Nasionale Padagentskap MSB Bpk The South African National Roads Agency SOC Ltd	Die figuur getoon The figure shown	 steldie padreserwe voor van 'n gedeelte represents the road reserve of a portion van Nasionale Roete N11 of National Route N11 Section	Vel Sheet 1 of 18 Plan P1170/19
---	---------------------------------------	--	--



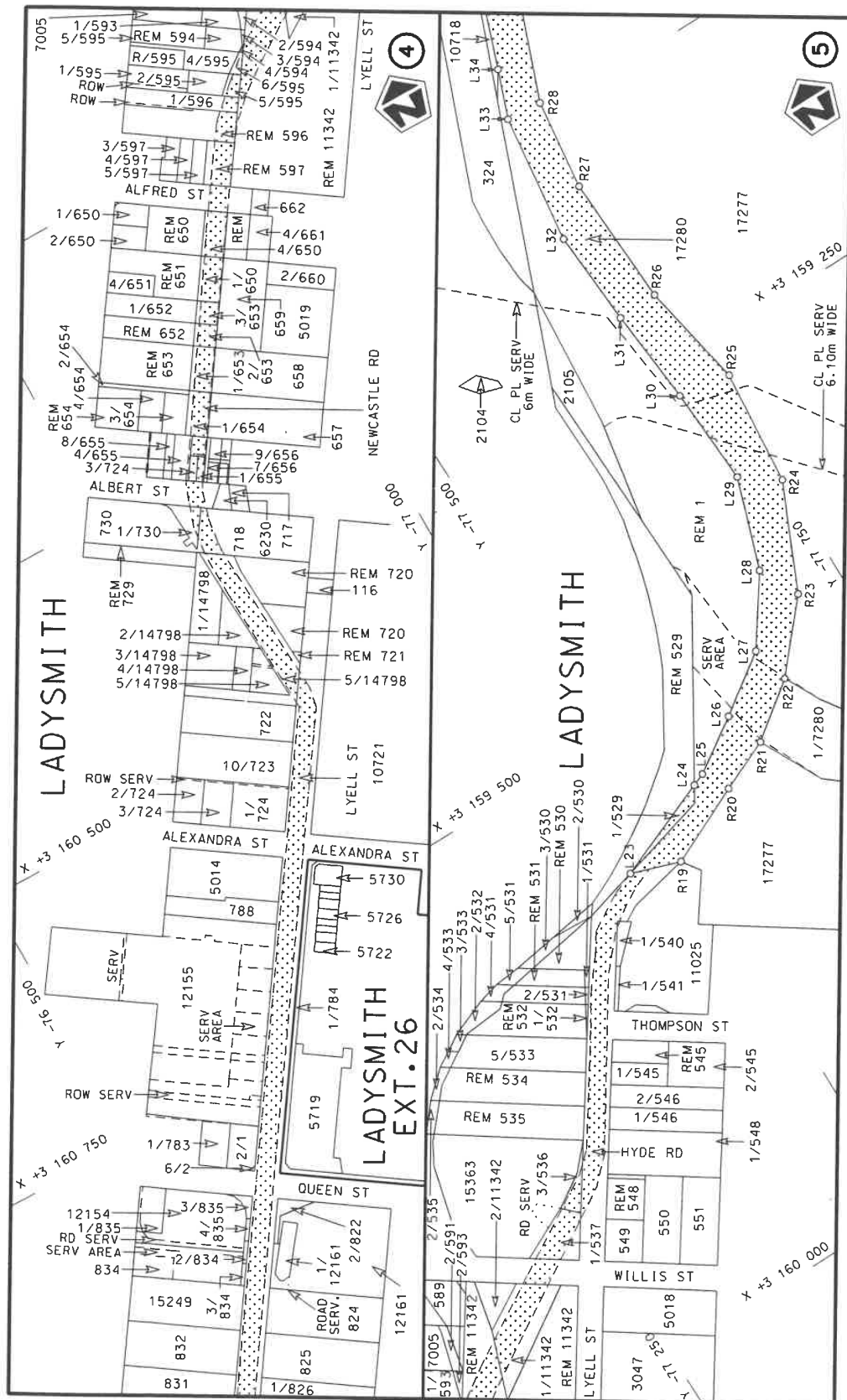
Vel
Sheet 2 of 18
Plan P1170/19


stelt die padreserwe voor van 'n gedeelte
represents the road reserve of a portion
van Nasionale Roete N11
of National Route

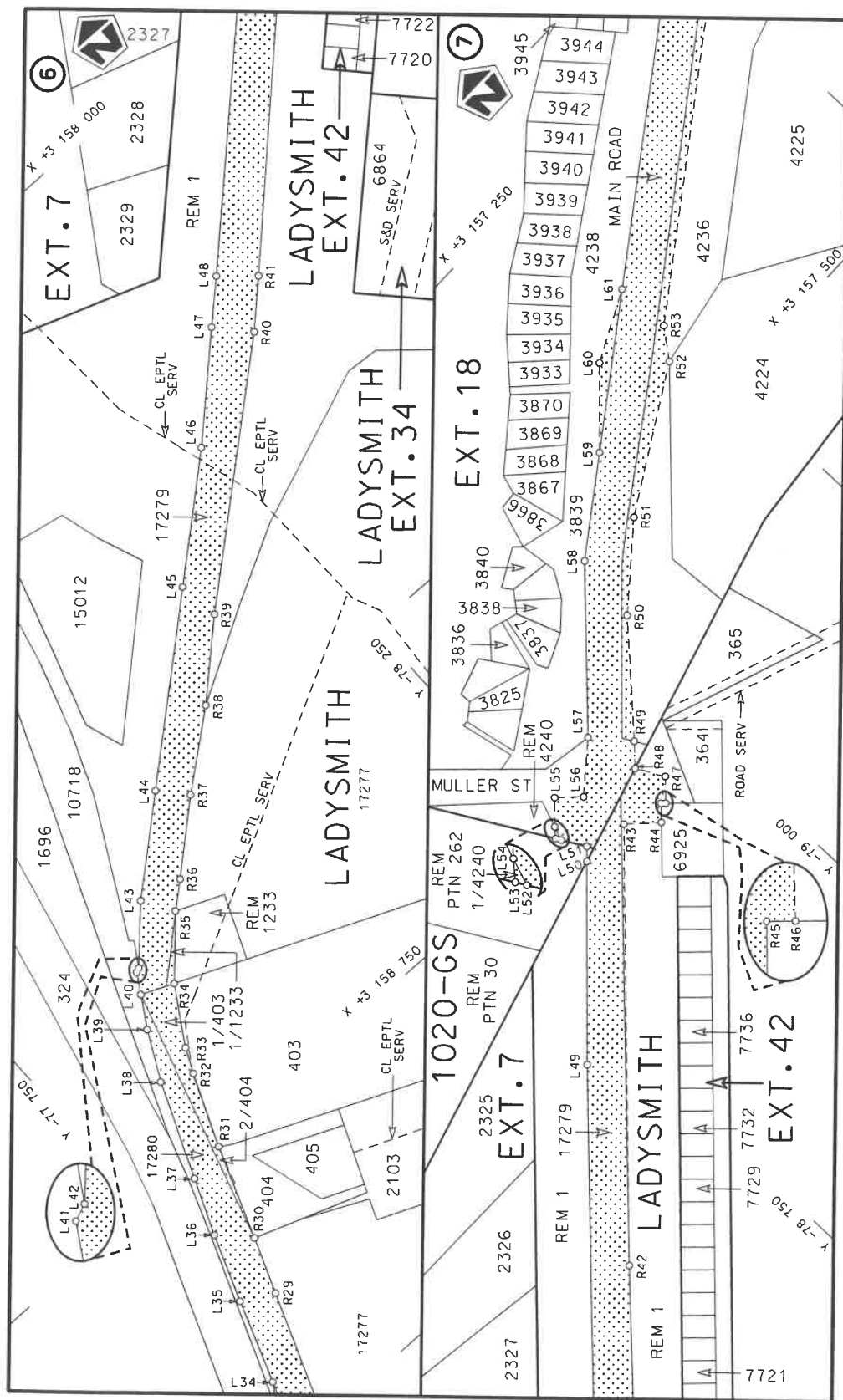


Die figuur getoon
The figure shown

Die Suid Afrikaanse Nasionale Padagentskap MSB Bpk
The South African National Roads Agency SOC Ltd



Die Suid Afrikaanse Nasionale Padagentskap MSB Bpk	Die figuur getoon		steldie padreserwe voor van 'n gedeelte represents the road reserve of a portion van Nasionale Roete N11 of National Route	Vel Sheet 3 of 18
The South African National Roads Agency SOC Ltd	The figure shown		2	Plan P1170/19



Vel
Sheet 4 of 18
Plan P1170/19

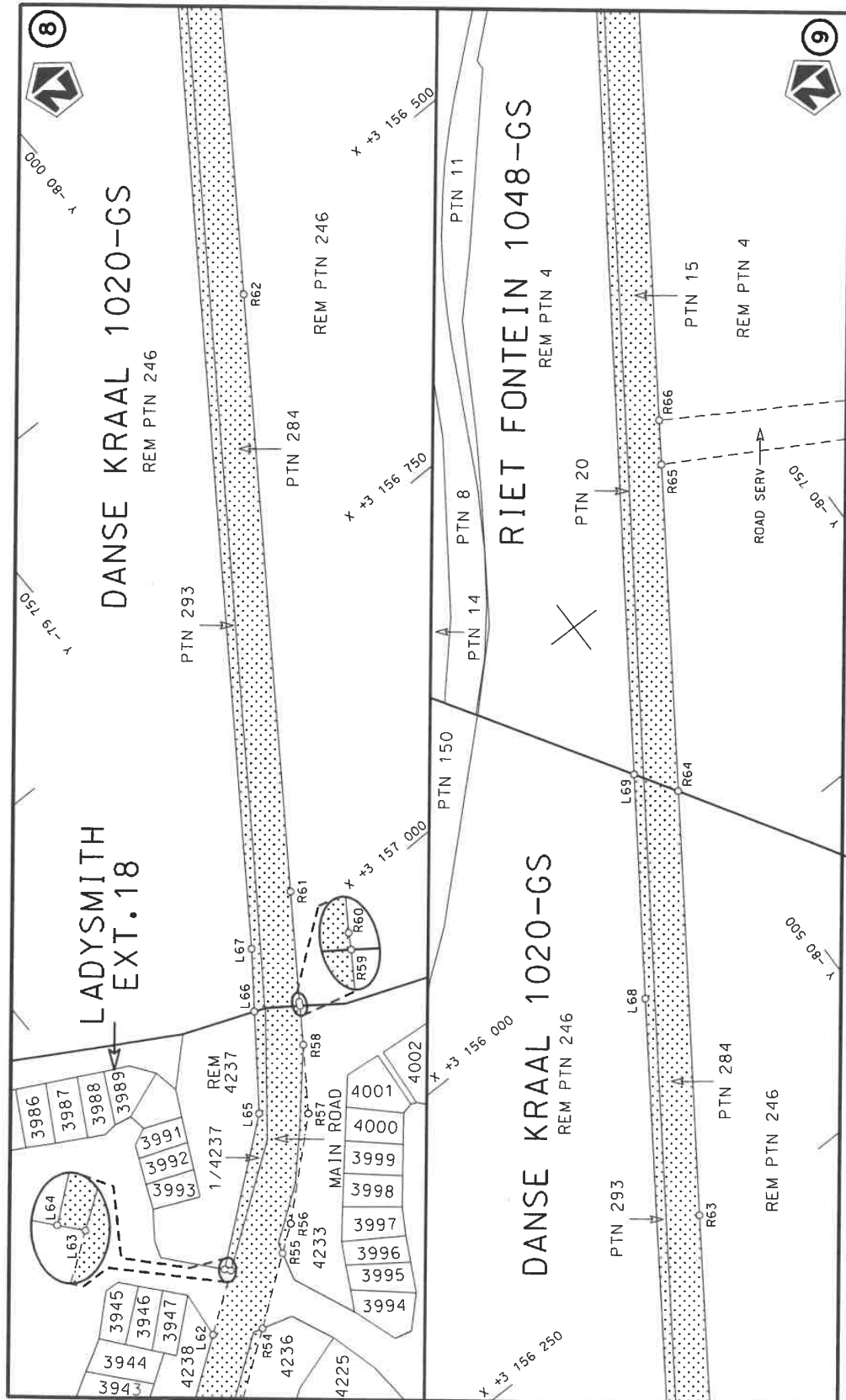
2


steeldie padreserwe voor van 'n gedeelte
represents the road reserve of a portion
van Nasionale Roete N11
of National Route

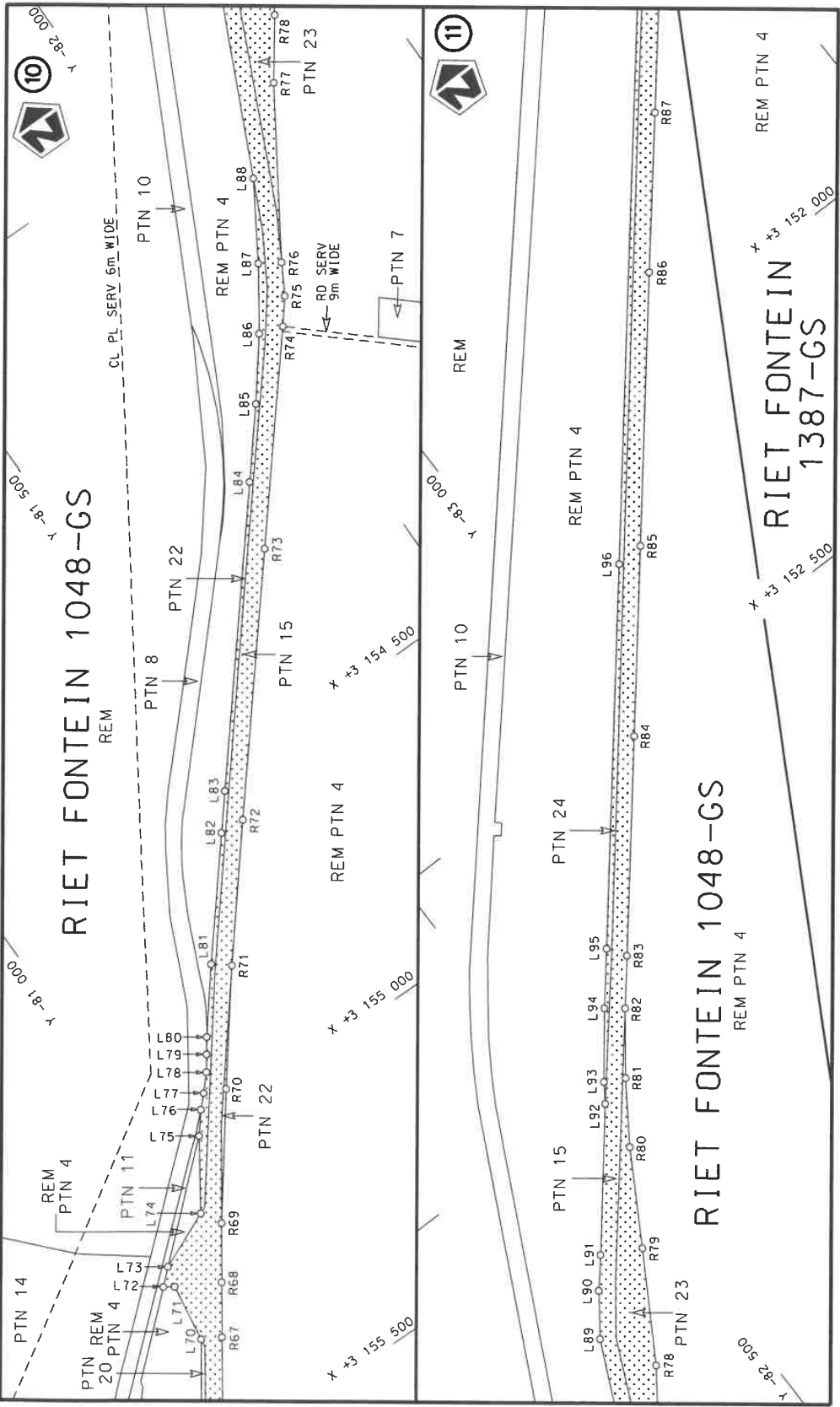


Die figuur getoon
The figure shown

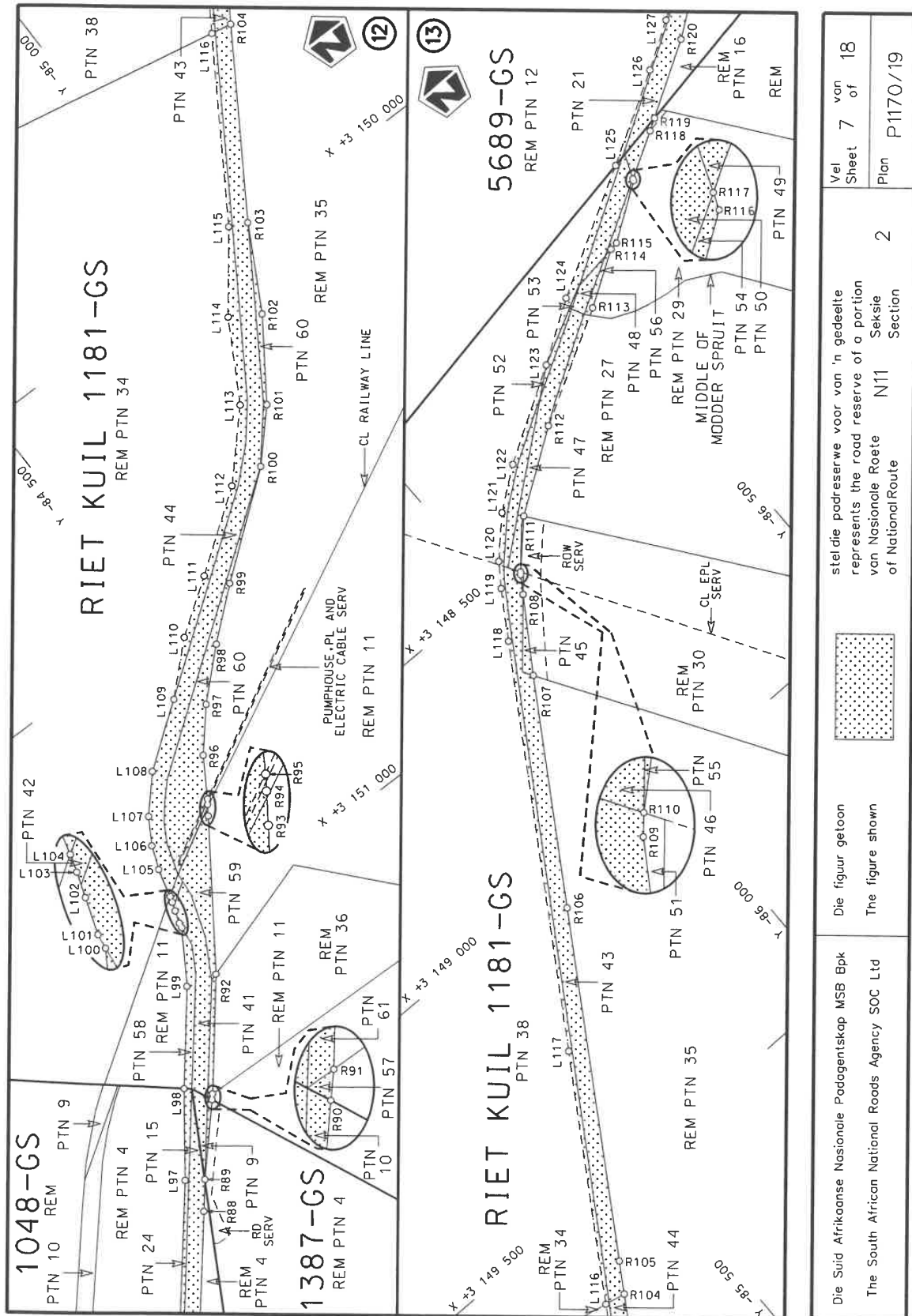
Die Suid Afrikaanse Nasionale Padagentskap MSB Bpk
The South African National Roads Agency SOC Ltd

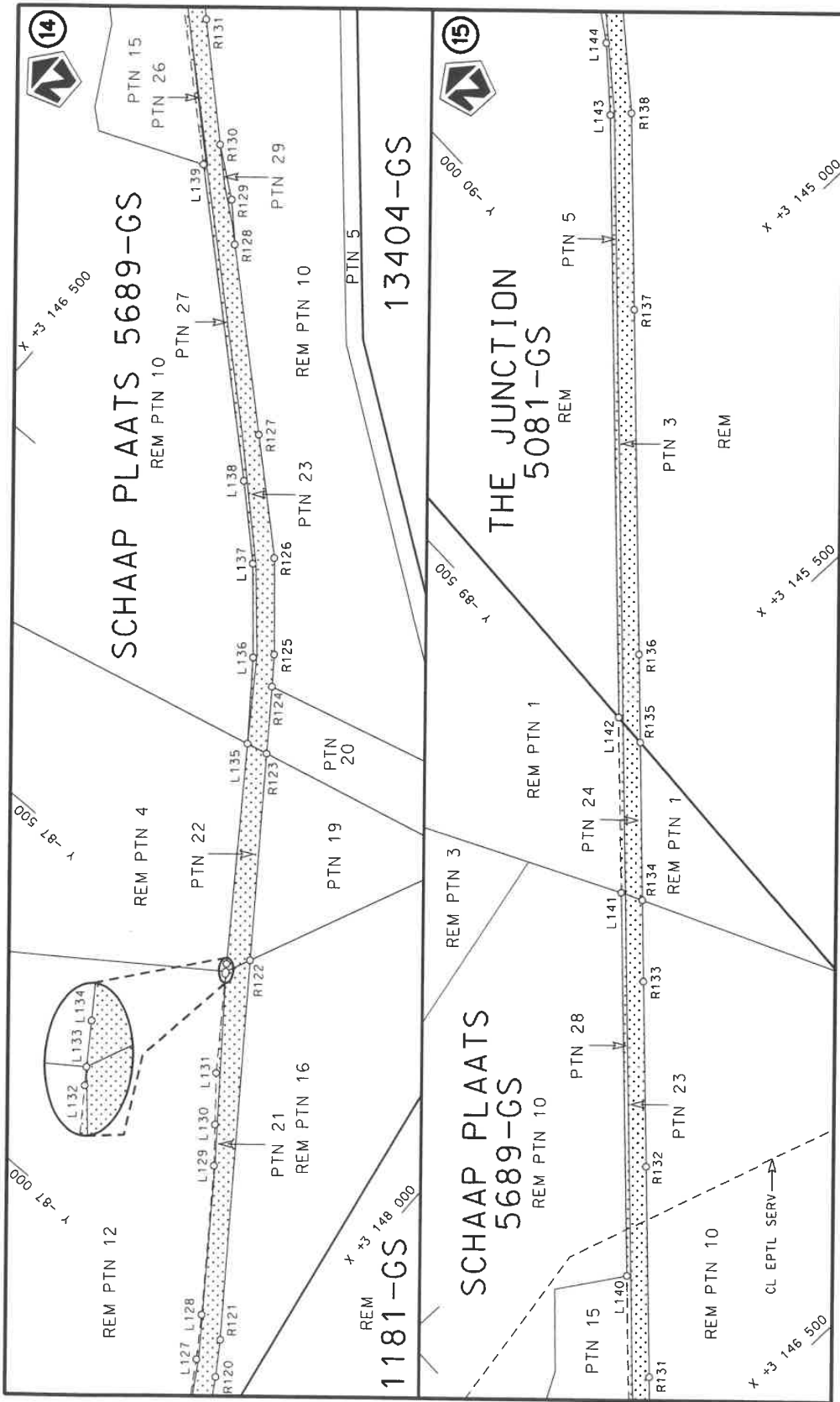



Die Suid Afrikaanse Nasionale Padagentskap MSB Bpk The South African National Roads Agency SOC Ltd	Die figuur getoon The figure shown		steldie padreserwe voor van 'n gedeelte represents the road reserve of a portion van Nasionale Roete N11 of National Route	Vel Sheet	van 5 of	18
				Plan	P1170/19	

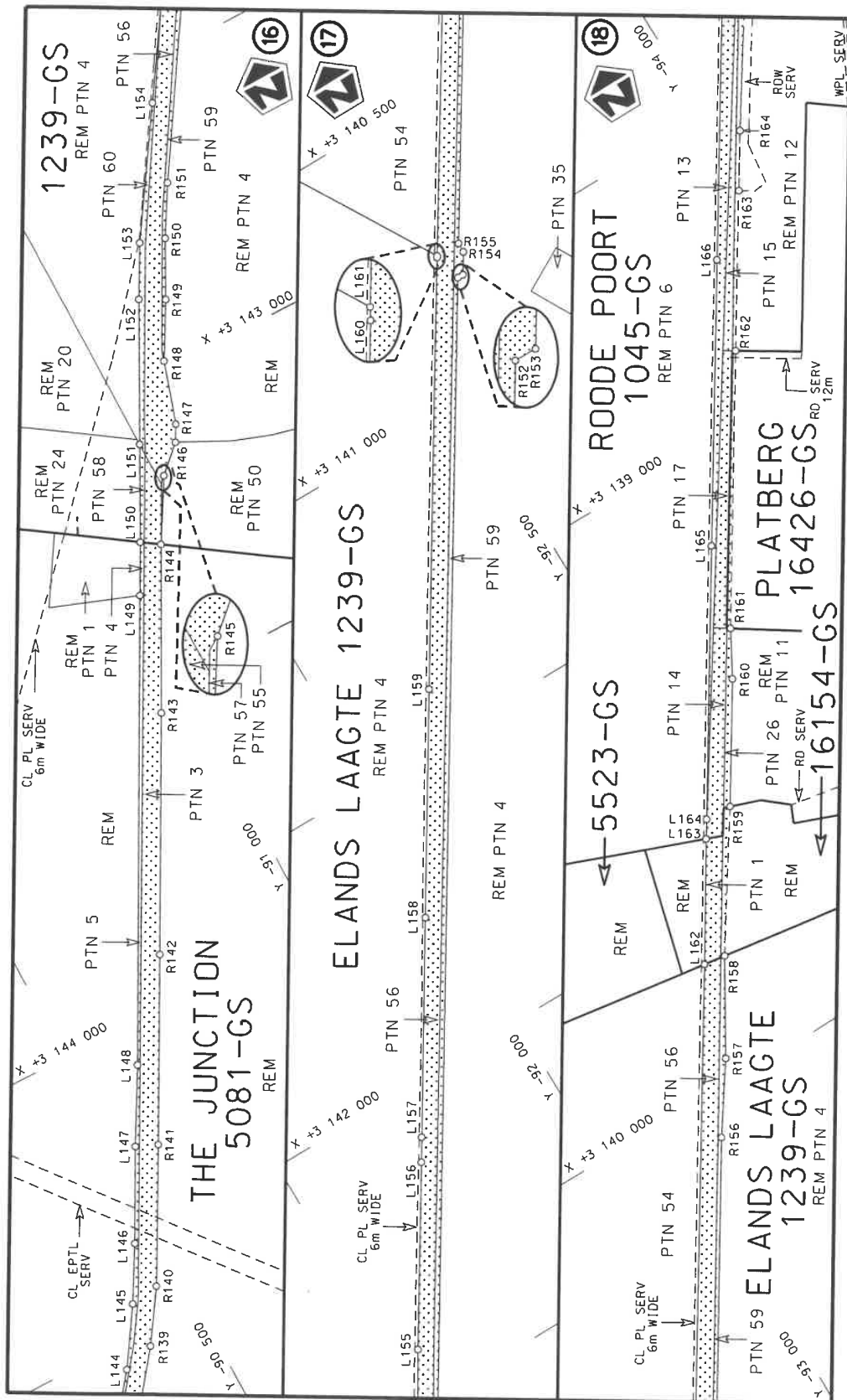


Die Suid Afrikaanse Nasionale Padagentskap MSB Bpk The South African National Roads Agency SOC Ltd		Die figuur getoon The figure shown		steeldie padreserwe voor van 'n gedeelte represents the road reserve of a portion van Nasionale Roete N11 of National Route		Vel Sheet		van of		18	
				2		Plan		P1170/19			





Die Suid Afrikaanse Nasionale Padagentskap MSB Bpk The South African National Roads Agency SOC Ltd	Die figuur getoon The figure shown		steldie padreserwe voor van 'n gedeelte represents the road reserve of a portion van Nasionale Roete N11 of National Route	2	Seksie Section	Vel Sheet	8 of	18
						Plan	P1170/19	



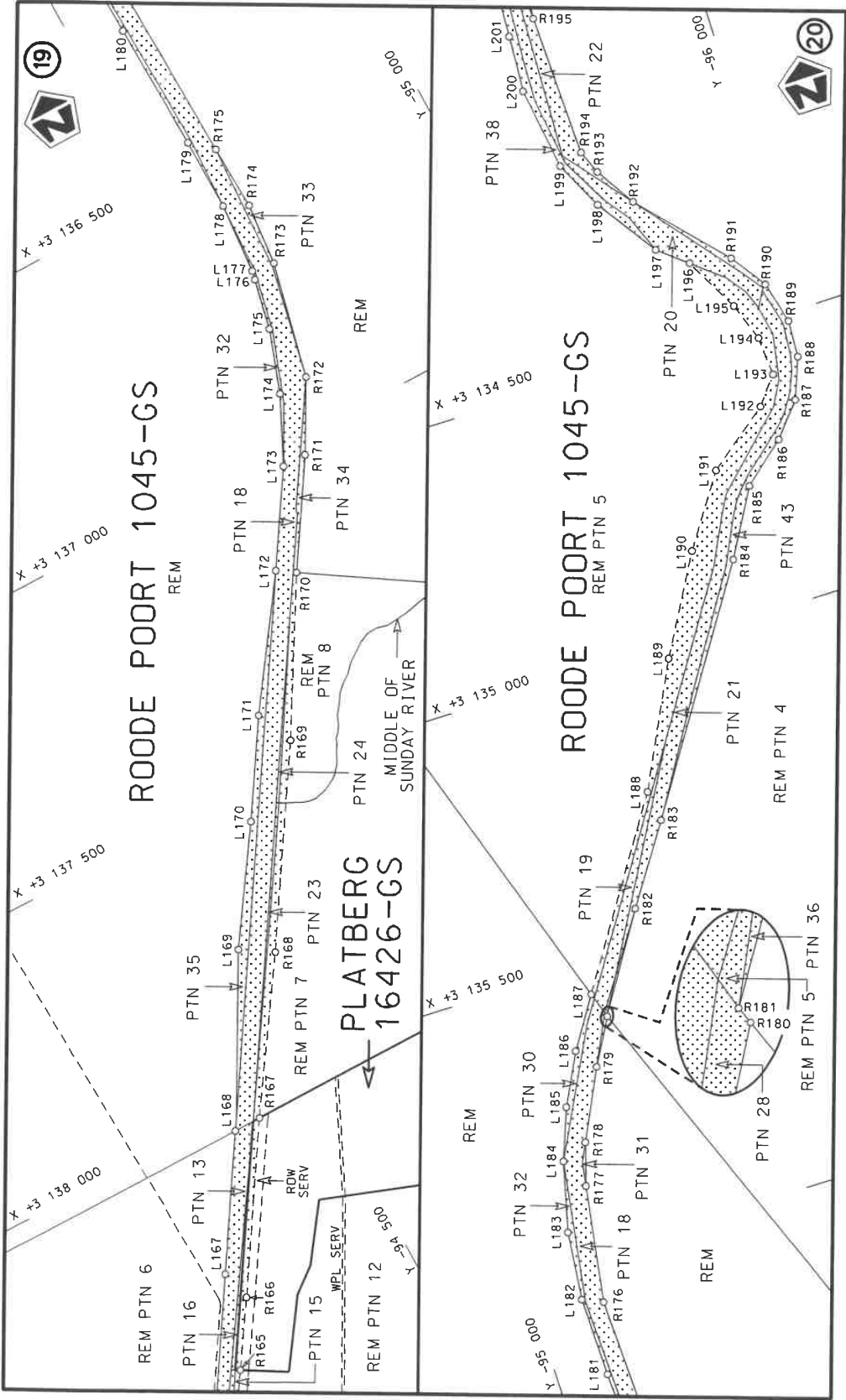
Die Suid Afrikaanse Nasionale Padagentskap MSB Bpk
The South African National Roads Agency SOC Ltd


Die figuur getoon
The figure shown

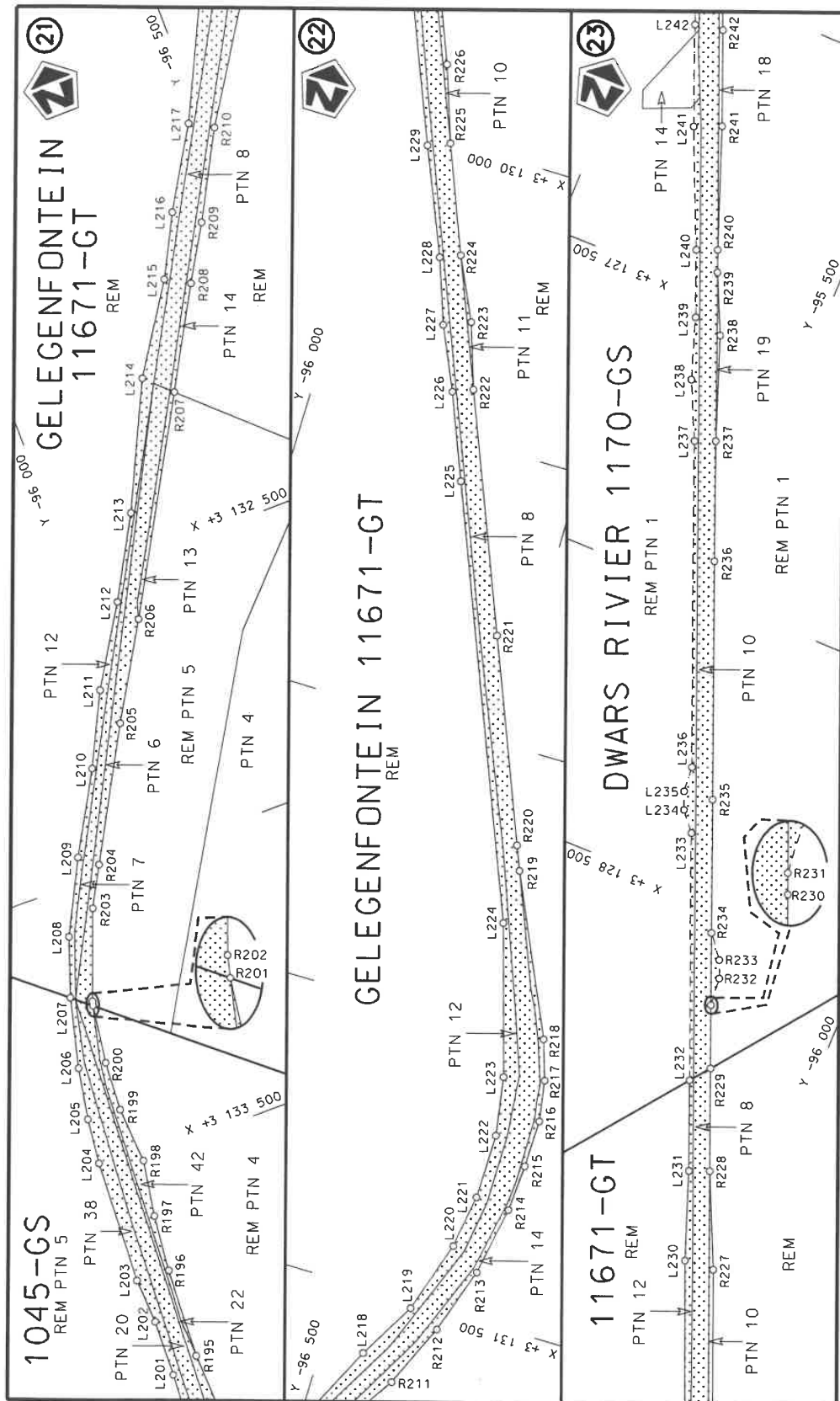


stelt die padreserwe voor van 'n gedeelte
represents the road reserve of a portion
van Nasionale Roete N11
of National Route

Vel
Sheet 9 of 18
Plan P1170/19



Die Suid Afrikaanse Nasionale Padagentskap MSB Bpk The South African National Roads Agency SOC Ltd	Die figuur getoon The figure shown		steldie padreserwe voor van 'n gedeelte represents the road reserve of a portion van Nasionale Roete N11 Seksie of National Route	Vel Sheet	10 of	18
			2	Plan	P1170/19	



Die figuur getoon
The figure shown

Die Suid Afrikaanse Nasionale Padagentskap MSB Bpk
The South African National Roads Agency SOC Ltd

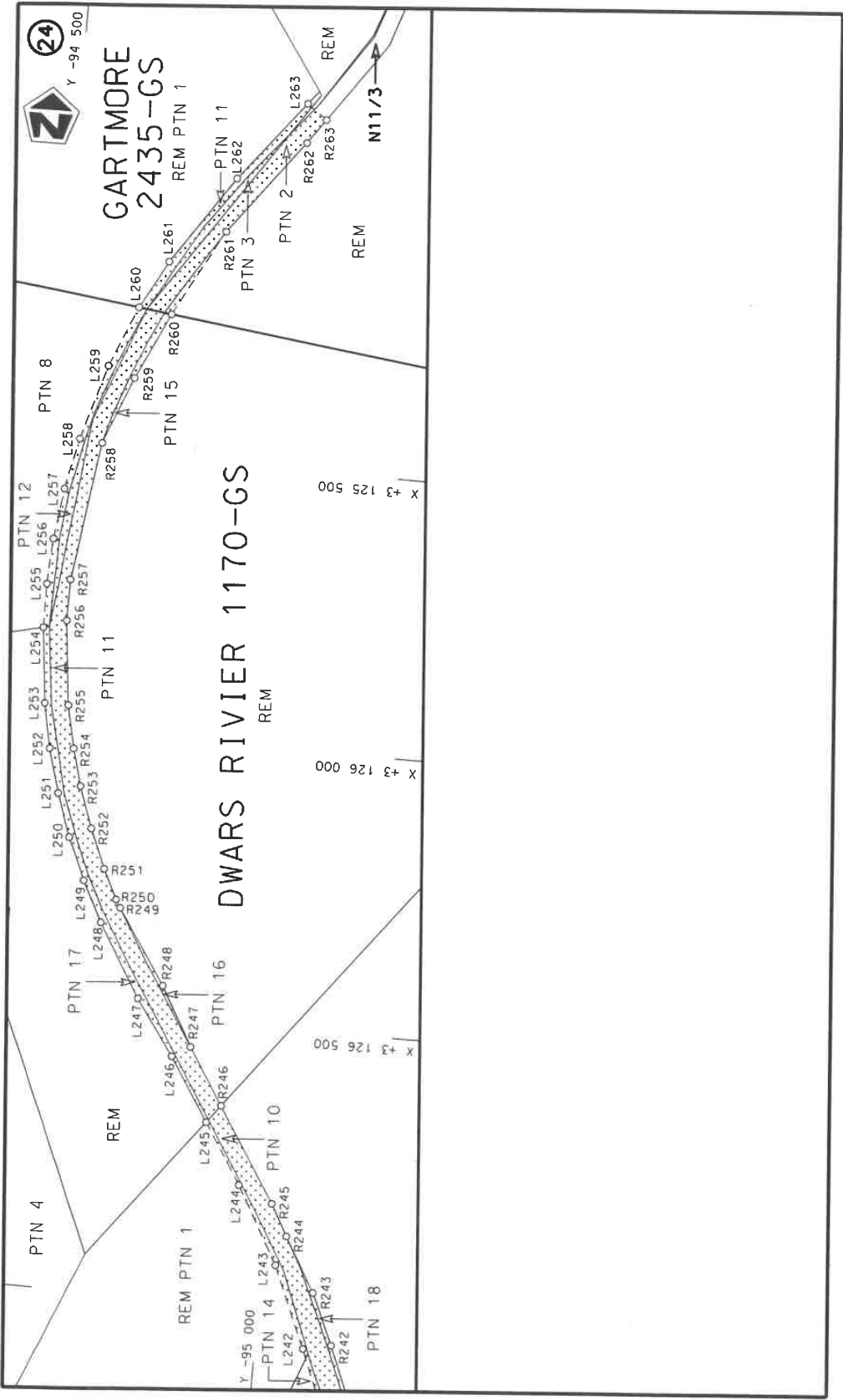
stel die padreserwe voor van 'n gedeelte
represents the road reserve of a portion
van Nasionale Roete N11
of National Route

Seksie
Section

Vel
Sheet

11 of 18

Plan
P1170/19



Die Suid Afrikaanse Nasionale Padogentskap MSB Bpk
The South African National Roads Agency SOC Ltd

Die figuur getoon
The figure shown



steldie padreserwe voor van 'n gedeelte
represents the road reserve of a portion
van Nasionale Roete N11
of National Route N11

2

Vel
Sheet 12 of 18
Plan P1170/19

PADRESERWE KOÖRDINATE / ROAD RESERVE CO-ORDINATES									
LINKERKANT/LEFT HAND SIDE					REGTERKANT/RIGHT HAND SIDE				
	Y	X	WG 29°		Y	X			
L1	-73 432.48	3 161 893.99		R1	-73 395.29	3 162 109.47			
L2	-73 494.82	3 161 930.84		R2	-73 427.60	3 162 094.54			
L3	-73 623.36	3 161 903.85		R3	-73 504.88	3 161 963.67			
L4	-73 658.46	3 161 881.45		R4	-73 610.34	3 161 946.96			
L5	-73 695.15	3 161 852.86		R5	-73 651.56	3 161 934.47			
L6	-73 803.36	3 161 763.84		R6	-73 690.50	3 161 907.14			
L7	-73 912.21	3 161 645.69		R7	-73 719.68	3 161 883.06			
L8	-74 017.66	3 161 553.55		R8	-73 823.20	3 161 789.54			
L9	-74 086.30	3 161 495.01		R9	-73 973.47	3 161 668.32			
L10	-74 160.81	3 161 451.29		R10	-74 043.90	3 161 594.36			
L11	-74 205.97	3 161 429.26		R11	-74 129.39	3 161 519.53			
L12	-74 223.73	3 161 423.17		R12	-74 161.75	3 161 498.27			
L13	-74 253.85	3 161 412.83		R13	-74 178.44	3 161 487.31			
L14	-74 302.74	3 161 402.23		R14	-74 213.38	3 161 464.32			
L15	-74 351.96	3 161 397.72		R15	-74 236.35	3 161 459.81			
L16	-74 402.44	3 161 398.05		R16	-74 395.78	3 161 428.47			
L17	-74 874.66	3 161 415.89		R17	-74 987.05	3 161 459.83			
L18	-74 923.94	3 161 419.65		R18	-75 332.83	3 161 584.52			
L19	-74 975.25	3 161 426.54		R19	-77 492.29	3 159 630.33			
L20	-75 024.11	3 161 438.00		R20	-77 562.93	3 159 597.55			
L21	-75 111.61	3 161 468.77		R21	-77 609.25	3 159 577.38			
L22	-75 340.09	3 161 554.35		R22	-77 657.97	3 159 540.72			
L23	-77 448.27	3 159 615.48		R23	-77 708.12	3 159 483.09			
L24	-77 538.84	3 159 578.74		R24	-77 750.57	3 159 389.15			
L25	-77 550.16	3 159 574.13		R25	-77 759.90	3 159 284.88			
L26	-77 597.33	3 159 542.85		R26	-77 741.45	3 159 188.76			
L27	-77 649.03	3 159 506.26		R27	-77 736.05	3 159 070.92			
L28	-77 690.19	3 159 447.09		R28	-77 746.26	3 158 989.38			
L29	-77 717.82	3 159 365.74		R29	-77 785.72	3 158 886.21			
L30	-77 718.40	3 159 279.37		R30	-77 804.51	3 158 836.76			
L31	-77 704.88	3 159 190.03		R31	-77 835.69	3 158 754.59			
L32	-77 699.43	3 159 103.48		R32	-77 862.68	3 158 690.63			
L33	-77 714.51	3 158 986.76		R33	-77 872.88	3 158 668.88			
L34	-77 730.58	3 158 944.29		R34	-77 903.75	3 158 619.10			
L35	-77 757.22	3 158 870.64		R35	-77 947.93	3 158 571.23			
L36	-77 779.86	3 158 811.22		R36	-77 970.22	3 158 552.82			
L37	-77 800.51	3 158 761.73		R37	-78 027.48	3 158 502.42			
L38	-77 836.00	3 158 677.21		R38	-78 091.07	3 158 451.47			
L39	-77 858.29	3 158 633.94		R39	-78 151.22	3 158 395.57			
L40	-77 874.90	3 158 606.90		R40	-78 345.72	3 158 230.22			
L41	-77 885.50	3 158 589.47		R41	-78 382.05	3 158 195.08			
L42	-77 889.56	3 158 587.84		R42	-78 607.84	3 157 973.83			
L43	-77 931.03	3 158 543.89		R43	-78 895.23	3 157 700.52			
L44	-78 006.54	3 158 478.77		R44	-78 919.10	3 157 723.97			
L45	-78 146.34	3 158 358.72		R45	-78 931.58	3 157 712.11			
L46	-78 242.01	3 158 276.33		R46	-78 934.54	3 157 715.22			
L47	-78 320.55	3 158 201.95		R47	-78 951.83	3 157 698.30			
L48	-78 354.12	3 158 170.53		R48	-78 938.64	3 157 673.84			
L49	-78 714.55	3 157 823.39		R49	-78 955.95	3 157 656.67			
L50	-78 848.13	3 157 698.90		R50	-79 034.15	3 157 575.21			
L51	-78 857.97	3 157 689.74		R51	-79 103.02	3 157 519.59			
Vel 13 Van 18					P1170/19				
Sheet					of				

PADRESERWE KOÖRDINATE / ROAD RESERVE CO-ORDINATES					
LINKERKANT/LEFT HAND SIDE			REGTERKANT/RIGHT HAND SIDE		
	Y	X	WG 29°	Y	X
L52	-78 846.64	3 157 669.20		R52	-79 226.69 3 157 447.82
L53	-78 844.12	3 157 664.62		R53	-79 247.00 3 157 422.11
L54	-78 851.33	3 157 656.74		R54	-79 490.95 3 157 249.95
L55	-78 870.54	3 157 638.88		R55	-79 547.41 3 157 209.30
L56	-78 888.52	3 157 657.30		R56	-79 569.76 3 157 193.45
L57	-78 930.23	3 157 624.09		R57	-79 644.06 3 157 127.29
L58	-79 044.23	3 157 514.09		R58	-79 679.44 3 157 077.11
L59	-79 124.46	3 157 457.69		R59	-79 699.08 3 157 048.38
L60	-79 183.34	3 157 402.74		R60	-79 701.00 3 157 045.21
L61	-79 245.23	3 157 372.78		R61	-79 757.20 3 156 964.39
L62	-79 453.26	3 157 226.54		R62	-80 061.99 3 156 526.63
L63	-79 501.94	3 157 192.24		R63	-80 266.21 3 156 231.68
L64	-79 498.30	3 157 187.98		R64	-80 483.27 3 155 921.39
L65	-79 610.22	3 157 099.82		R65	-80 649.70 3 155 682.44
L66	-79 664.66	3 157 026.72		R66	-80 672.20 3 155 650.18
L67	-79 698.07	3 156 981.88		R67	-80 904.94 3 155 316.20
L68	-80 346.90	3 156 049.87		R68	-80 960.73 3 155 235.89
L69	-80 461.51	3 155 885.88		R69	-81 021.35 3 155 149.44
L70	-80 872.33	3 155 298.08		R70	-81 165.12 3 154 958.85
L71	-80 888.00	3 155 194.30		R71	-81 299.60 3 154 785.76
L72	-80 871.21	3 155 183.01		R72	-81 464.77 3 154 584.22
L73	-80 898.95	3 155 158.40		R73	-81 773.92 3 154 212.18
L74	-81 000.80	3 155 114.27		R74	-82 027.54 3 153 907.82
L75	-81 077.92	3 154 999.69		R75	-82 061.24 3 153 865.61
L76	-81 107.42	3 154 963.38		R76	-82 090.86 3 153 813.35
L77	-81 128.33	3 154 942.03		R77	-82 262.69 3 153 544.85
L78	-81 153.74	3 154 914.31		R78	-82 333.03 3 153 447.37
L79	-81 175.31	3 154 884.28		R79	-82 441.56 3 153 267.52
L80	-81 190.22	3 154 863.59		R80	-82 533.93 3 153 111.20
L81	-81 271.07	3 154 761.74		R81	-82 603.17 3 153 009.51
L82	-81 420.69	3 154 581.47		R82	-82 677.57 3 152 911.70
L83	-81 468.61	3 154 523.73		R83	-82 738.16 3 152 838.73
L84	-81 820.30	3 154 099.97		R84	-82 987.12 3 152 537.34
L85	-81 909.15	3 153 992.92		R85	-83 202.66 3 152 276.63
L86	-81 985.77	3 153 894.45		R86	-83 511.44 3 151 901.49
L87	-82 056.04	3 153 791.36		R87	-83 692.60 3 151 683.14
L88	-82 135.53	3 153 662.71		R88	-83 899.41 3 151 432.84
L89	-82 282.60	3 153 349.44		R89	-83 937.84 3 151 386.00
L90	-82 333.62	3 153 279.84		R90	-84 040.80 3 151 274.06
L91	-82 375.10	3 153 231.26		R91	-84 048.57 3 151 265.67
L92	-82 546.41	3 153 023.61		R92	-84 191.97 3 151 089.12
L93	-82 568.45	3 152 991.24		R93	-84 363.51 3 150 841.88
L94	-82 649.31	3 152 888.09		R94	-84 375.85 3 150 824.09
L95	-82 717.20	3 152 806.60		R95	-84 382.01 3 150 815.21
L96	-83 152.92	3 152 279.13		R96	-84 426.10 3 150 744.62
L97	-83 907.20	3 151 364.72		R97	-84 489.28 3 150 671.33
L98	-84 011.84	3 151 225.29		R98	-84 574.27 3 150 592.25
L99	-84 134.56	3 151 074.22		R99	-84 664.59 3 150 515.91
L100	-84 194.69	3 150 980.12		R100	-84 845.80 3 150 375.42
L101	-84 196.13	3 150 970.34		R101	-84 926.00 3 150 289.36
L102	-84 204.14	3 150 946.94		R102	-85 023.75 3 150 147.53
			Vel Sheet	14 Van of	18 P1170/19

PADRESERVE KOÖRDINATE / ROAD RESERVE CO-ORDINATES														
LINKERKANT/LEFT HAND SIDE					REGTERKANT/RIGHT HAND SIDE									
	Y		X	WG 29°		Y		X						
L103	-84 209.66	3	150	930.85	R103	-85 107.90	3	149	994.00					
L104	-84 213.27	3	150	919.57	R104	-85 310.63	3	149	676.04					
L105	-84 227.27	3	150	865.55	R105	-85 344.50	3	149	622.52					
L106	-84 244.24	3	150	821.89	R106	-85 708.14	3	149	049.82					
L107	-84 273.19	3	150	774.35	R107	-85 947.27	3	148	673.53					
L108	-84 332.33	3	150	711.54	R108	-86 033.00	3	148	544.39					
L109	-84 446.96	3	150	626.81	R109	-86 053.60	3	148	513.35					
L110	-84 534.55	3	150	545.16	R110	-86 057.42	3	148	509.05					
L111	-84 635.31	3	150	475.39	R111	-86 130.68	3	148	432.55					
L112	-84 780.83	3	150	371.45	R112	-86 277.38	3	148	333.06					
L113	-84 886.27	3	150	259.01	R113	-86 486.29	3	148	217.28					
L114	-84 969.76	3	150	113.17	R114	-86 584.45	3	148	155.33					
L115	-85 074.57	3	149	978.29	R115	-86 600.12	3	148	152.88					
L116	-85 271.81	3	149	668.38	R116	-86 701.35	3	148	084.25					
L117	-85 532.74	3	149	258.40	R117	-86 702.77	3	148	080.66					
L118	-85 953.80	3	148	594.01	R118	-86 786.48	3	148	032.86					
L119	-86 008.67	3	148	508.96	R119	-86 808.51	3	148	019.78					
L120	-86 038.98	3	148	467.10	R120	-86 943.81	3	147	939.58					
L121	-86 104.43	3	148	400.84	R121	-86 999.49	3	147	902.72					
L122	-86 178.75	3	148	344.90	R122	-87 549.20	3	147	500.54					
L123	-86 349.53	3	148	242.81	R123	-87 848.26	3	147	282.01					
L124	-86 460.38	3	148	171.05	R124	-87 945.15	3	147	211.16					
L125	-86 694.56	3	148	040.43	R125	-87 991.13	3	147	176.88					
L126	-86 861.14	3	147	944.88	R126	-88 121.88	3	147	064.89					
L127	-86 945.57	3	147	893.12	R127	-88 270.89	3	146	900.33					
L128	-87 012.04	3	147	848.47	R128	-88 499.79	3	146	646.43					
L129	-87 228.41	3	147	691.31	R129	-88 556.69	3	146	590.03					
L130	-87 285.55	3	147	644.49	R130	-88 617.43	3	146	510.16					
L131	-87 356.66	3	147	586.02	R131	-88 770.65	3	146	345.67					
L132	-87 501.94	3	147	483.11	R132	-89 022.89	3	146	066.19					
L133	-87 505.34	3	147	480.70	R133	-89 244.75	3	145	819.86					
L134	-87 516.81	3	147	472.94	R134	-89 341.99	3	145	712.25					
L135	-87 839.48	3	147	244.61	R135	-89 531.04	3	145	503.01					
L136	-87 962.60	3	147	151.87	R136	-89 636.57	3	145	386.21					
L137	-88 089.31	3	147	042.14	R137	-90 047.94	3	144	929.04					
L138	-88 190.99	3	146	933.58	R138	-90 282.05	3	144	668.65					
L139	-88 571.31	3	146	510.99	R139	-90 391.08	3	144	529.13					
L140	-88 865.01	3	146	185.85	R140	-90 451.04	3	144	439.11					
L141	-89 323.81	3	145	676.68	R141	-90 573.55	3	144	216.75					
L142	-89 533.22	3	145	444.10	R142	-90 736.27	3	143	917.27					
L143	-90 252.58	3	144	645.57	R143	-90 942.32	3	143	537.04					
L144	-90 334.16	3	144	546.32	R144	-91 083.58	3	143	270.77					
L145	-90 398.81	3	144	447.20	R145	-91 145.83	3	143	164.50					
L146	-90 453.31	3	144	353.38	R146	-91 192.50	3	143	121.67					
L147	-90 535.85	3	144	200.52	R147	-91 208.36	3	143	093.34					
L148	-90 607.99	3	144	073.25	R148	-91 242.30	3	142	983.80					
L149	-91 007.38	3	143	333.61	R149	-91 296.75	3	142	888.20					
L150	-91 052.64	3	143	249.78	R150	-91 347.16	3	142	791.23					
L151	-91 133.93	3	143	095.05	R151	-91 397.40	3	142	705.64					
L152	-91 254.51	3	142	865.39	R152	-92 605.58	3	140	809.63					
L153	-91 303.29	3	142	777.16	R153	-92 614.94	3	140	809.87					
					<table><tr><td>Vel Sheet</td><td>15</td><td>Van of</td><td>18</td><td>P1170/19</td></tr></table>					Vel Sheet	15	Van of	18	P1170/19
Vel Sheet	15	Van of	18	P1170/19										

PADRESERVE KOÖRDINATE / ROAD RESERVE CO-ORDINATES									
LINKERKANT/LEFT HAND SIDE					REGTERKANT/RIGHT HAND SIDE				
	Y		X	WG 29°		Y		X	
L154	-91 440.58	3	142	567.16	R154	-92 637.82	3	140	775.34
L155	-91 549.63	3	142	398.14	R155	-92 638.40	3	140	758.13
L156	-91 723.24	3	142	126.03	R156	-93 073.11	3	140	075.95
L157	-91 747.19	3	142	088.02	R157	-93 153.52	3	139	959.07
L158	-91 958.41	3	141	756.07	R158	-93 248.07	3	139	801.38
L159	-92 177.75	3	141	410.79	R159	-93 396.07	3	139	578.42
L160	-92 592.91	3	140	759.62	R160	-93 518.93	3	139	385.59
L161	-92 594.42	3	140	757.00	R161	-93 563.22	3	139	306.82
L162	-93 209.39	3	139	795.57	R162	-93 830.07	3	138	888.04
L163	-93 329.15	3	139	605.34	R163	-93 983.76	3	138	646.87
L164	-93 348.22	3	139	575.99	R164	-94 041.37	3	138	556.45
L165	-93 611.18	3	139	163.20	R165	-94 134.28	3	138	414.85
L166	-93 886.17	3	138	731.81	R166	-94 205.96	3	138	305.60
L167	-94 192.40	3	138	250.94	R167	-94 378.96	3	138	034.12
L168	-94 330.39	3	138	034.04	R168	-94 545.04	3	137	786.50
L169	-94 342.28	3	138	015.35	R169	-94 749.27	3	137	466.01
L170	-94 489.38	3	137	751.03	R170	-94 901.06	3	137	207.26
L171	-94 618.04	3	137	560.28	R171	-95 014.08	3	137	029.50
L172	-94 720.11	3	137	400.05	R172	-95 081.71	3	136	908.15
L173	-94 870.12	3	137	187.05	R173	-95 127.87	3	136	702.18
L174	-94 970.62	3	137	029.21	R174	-95 138.06	3	136	590.12
L175	-95 026.87	3	136	912.56	R175	-95 132.85	3	136	474.02
L176	-95 065.06	3	136	801.41	R176	-95 120.73	3	136	084.69
L177	-95 084.02	3	136	711.71	R177	-95 154.48	3	135	877.43
L178	-95 087.32	3	136	696.07	R178	-95 177.44	3	135	802.59
L179	-95 096.49	3	136	569.19	R179	-95 237.97	3	135	679.95
L180	-95 094.73	3	136	440.06	R180	-95 283.76	3	135	599.88
L181	-95 087.63	3	136	210.17	R181	-95 283.31	3	135	598.73
L182	-95 085.26	3	136	068.77	R182	-95 390.41	3	135	431.30
L183	-95 098.63	3	135	946.92	R183	-95 482.83	3	135	295.02
L184	-95 130.12	3	135	823.23	R184	-95 748.21	3	134	891.03
L185	-95 164.63	3	135	732.52	R185	-95 815.73	3	134	774.19
L186	-95 211.29	3	135	641.94	R186	-95 890.45	3	134	711.38
L187	-95 268.62	3	135	553.64	R187	-95 940.03	3	134	652.68
L188	-95 475.19	3	135	239.50	R188	-95 967.74	3	134	580.86
L189	-95 584.49	3	135	024.14	R189	-95 971.62	3	134	514.92
L190	-95 683.14	3	134	853.73	R190	-95 952.52	3	134	440.35
L191	-95 767.97	3	134	730.12	R191	-95 908.91	3	134	377.76
L192	-95 878.32	3	134	645.40	R192	-95 772.42	3	134	228.15
L193	-95 916.46	3	134	597.56	R193	-95 728.27	3	134	157.98
L194	-95 912.33	3	134	528.13	R194	-95 711.24	3	134	116.24
L195	-95 887.93	3	134	460.41	R195	-95 703.23	3	133	863.08
L196	-95 835.25	3	134	363.24	R196	-95 712.35	3	133	703.44
L197	-95 784.98	3	134	322.13	R197	-95 723.66	3	133	604.03
L198	-95 710.96	3	134	213.95	R198	-95 740.97	3	133	504.68
L199	-95 668.71	3	134	128.11	R199	-95 734.62	3	133	405.01
L200	-95 646.63	3	133	981.06	R200	-95 740.57	3	133	317.58
L201	-95 652.83	3	133	880.52	R201	-95 756.10	3	133	214.64
L202	-95 657.16	3	133	780.61	R202	-95 757.99	3	133	207.03
L203	-95 653.43	3	133	700.30	R203	-95 817.82	3	133	052.52
L204	-95 665.14	3	133	480.68	R204	-95 856.35	3	132	983.91
Vel Sheet					16	Van of		18	P1170/19

PADRESERVE KOÖRDINATE / ROAD RESERVE CO-ORDINATES									
LINKERKANT/LEFT HAND SIDE					REGTERKANT/RIGHT HAND SIDE				
	Y		X	WG 29°		Y		X	
L205	-95 674.81	3	133	400.21	R205	-95 981.92	3	132	762.49
L206	-95 692.28	3	133	309.28	R206	-96 079.04	3	132	601.45
L207	-95 723.31	3	133	186.56	R207	-96 283.29	3	132	246.82
L208	-95 760.20	3	133	084.55	R208	-96 380.05	3	132	076.95
L209	-95 826.22	3	132	958.37	R209	-96 436.23	3	131	982.36
L210	-95 906.28	3	132	819.84	R210	-96 517.76	3	131	833.15
L211	-95 969.49	3	132	694.72	R211	-96 637.12	3	131	647.80
L212	-96 054.75	3	132	559.16	R212	-96 687.64	3	131	534.85
L213	-96 133.94	3	132	420.13	R213	-96 727.31	3	131	416.86
L214	-96 238.82	3	132	203.66	R214	-96 749.42	3	131	294.26
L215	-96 338.33	3	132	053.19	R215	-96 754.94	3	131	211.17
L216	-96 394.25	3	131	946.94	R216	-96 756.87	3	131	127.19
L217	-96 477.78	3	131	810.39	R217	-96 745.41	3	131	054.53
L218	-96 574.42	3	131	612.39	R218	-96 722.69	3	130	984.61
L219	-96 632.39	3	131	511.43	R219	-96 596.83	3	130	708.46
L220	-96 673.58	3	131	383.53	R220	-96 579.77	3	130	666.18
L221	-96 688.69	3	131	288.56	R221	-96 440.07	3	130	318.21
L222	-96 690.61	3	131	173.31	R222	-96 275.83	3	129	910.65
L223	-96 673.88	3	131	069.13	R223	-96 237.80	3	129	796.65
L224	-96 595.74	3	130	806.01	R224	-96 186.26	3	129	688.11
L225	-96 300.65	3	130	073.19	R225	-96 111.57	3	129	502.48
L226	-96 240.88	3	129	924.78	R226	-96 065.97	3	129	369.95
L227	-96 191.42	3	129	815.33	R227	-95 959.87	3	129	106.41
L228	-96 151.23	3	129	702.15	R228	-95 887.72	3	128	945.94
L229	-96 073.74	3	129	517.75	R229	-95 819.22	3	128	776.08
L230	-95 907.52	3	129	110.35	R230	-95 777.10	3	128	671.61
L231	-95 853.35	3	128	959.67	R231	-95 777.04	3	128	671.46
L232	-95 793.10	3	128	809.82	R232	-95 772.90	3	128	621.08
L233	-95 628.67	3	128	400.91	R233	-95 760.56	3	128	590.43
L234	-95 600.94	3	128	366.84	R234	-95 729.07	3	128	551.93
L235	-95 588.60	3	128	336.20	R235	-95 640.63	3	128	331.58
L236	-95 585.00	3	128	292.33	R236	-95 482.15	3	127	937.90
L237	-95 368.22	3	127	753.58	R237	-95 403.04	3	127	739.47
L238	-95 321.60	3	127	653.77	R238	-95 338.87	3	127	562.76
L239	-95 286.10	3	127	549.48	R239	-95 291.72	3	127	460.98
L240	-95 241.31	3	127	438.16	R240	-95 276.70	3	127	423.91
L241	-95 153.62	3	127	236.30	R241	-95 200.00	3	127	217.63
L242	-95 086.43	3	127	069.31	R242	-95 136.29	3	127	059.30
L243	-95 025.12	3	126	923.92	R243	-95 096.05	3	126	967.45
L244	-94 947.45	3	126	786.14	R244	-95 040.19	3	126	870.58
L245	-94 879.65	3	126	678.49	R245	-95 009.04	3	126	814.47
L246	-94 808.89	3	126	566.13	R246	-94 903.77	3	126	646.97
L247	-94 739.87	3	126	467.79	R247	-94 840.47	3	126	546.24
L248	-94 662.66	3	126	337.62	R248	-94 782.18	3	126	441.14
L249	-94 625.74	3	126	264.89	R249	-94 694.89	3	126	308.61
L250	-94 593.89	3	126	189.81	R250	-94 686.41	3	126	294.11
L251	-94 567.27	3	126	112.71	R251	-94 660.56	3	126	241.38
L252	-94 546.00	3	126	033.98	R252	-94 631.42	3	126	170.93
L253	-94 530.18	3	125	953.97	R253	-94 605.74	3	126	097.13
L254	-94 516.14	3	125	819.18	R254	-94 587.99	3	126	030.93
L255	-94 516.08	3	125	740.65	R255	-94 572.35	3	125	954.43
Vel Sheet					17	Van of		18	P1170/19

PADRESERWE KOÖRDINATE / ROAD RESERVE CO-ORDINATES									
LINKERKANT/LEFT HAND SIDE					REGTERKANT/RIGHT HAND SIDE				
	Y		X	WG 29°		Y		X	
L256	-94 520.59	3 125	659.26		R256	-94 556.81	3 125	803.37	
L257	-94 532.41	3 125	568.33		R257	-94 556.74	3 125	729.45	
L258	-94 551.75	3 125	476.79		R258	-94 591.90	3 125	480.85	
L259	-94 591.66	3 125	341.61		R259	-94 639.23	3 125	359.97	
L260	-94 636.29	3 125	233.08		R260	-94 695.22	3 125	240.35	
L261	-94 683.02	3 125	146.91		R261	-94 779.35	3 125	084.76	
L262	-94 790.40	3 124	988.18		R262	-94 909.36	3 124	914.07	
L263	-94 905.01	3 124	844.13		R263	-94 940.46	3 124	870.21	