

---

**GOVERNMENT NOTICES • GOEWERMENTSKENNISGEWINGS**

---

**DEPARTMENT OF TRANSPORT****NO. 6252****30 May 2025**

---

**THE SOUTH AFRICAN NATIONAL ROADS  
AGENCY SOC LIMITED****Registration No: 1998/009584/30**

---

**DECLARATION AMENDMENT OF NATIONAL ROAD N9 SECTION 4**

AMENDMENT OF DECLARATION No. 567 OF 2009.

By virtue of section 40(1)(b) of The South African National Roads Agency Limited and National Roads Act 1998 (Act No. 7 of 1998), I hereby amend Declaration No. 567 of 2009 by substituting it in its entirety with the accompanying sheets 1 to 36 of Plan No. P1210/20.

**(National Road N9 Section 4: Willowmore – Aberdeen)**  
**MINISTER OF TRANSPORT**

DEPARTEMENT VAN VERVOER

NO. 6252

30 Mei 2025

**DIE SUID-AFRIKAANSE NASIONALE  
PADAGENTSKAP MSB BEPERK**

Registrasie No: 1998/009584/30

**VERKLARING WYSIGING VAN NASIONALE PAD N9 SEKSIE 4**

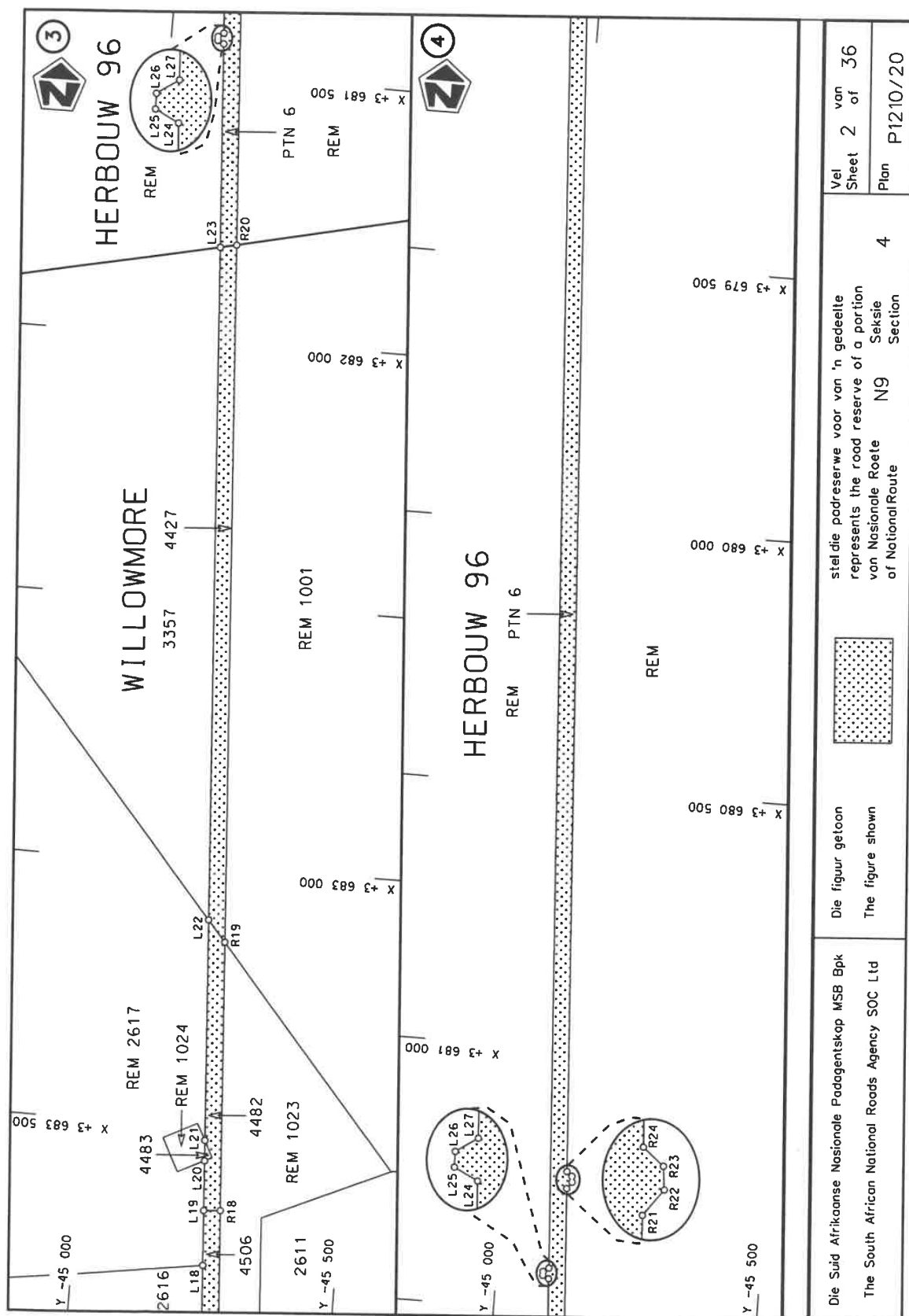
WYSIGING VAN VERKLARING No. 567 VAN 2009.

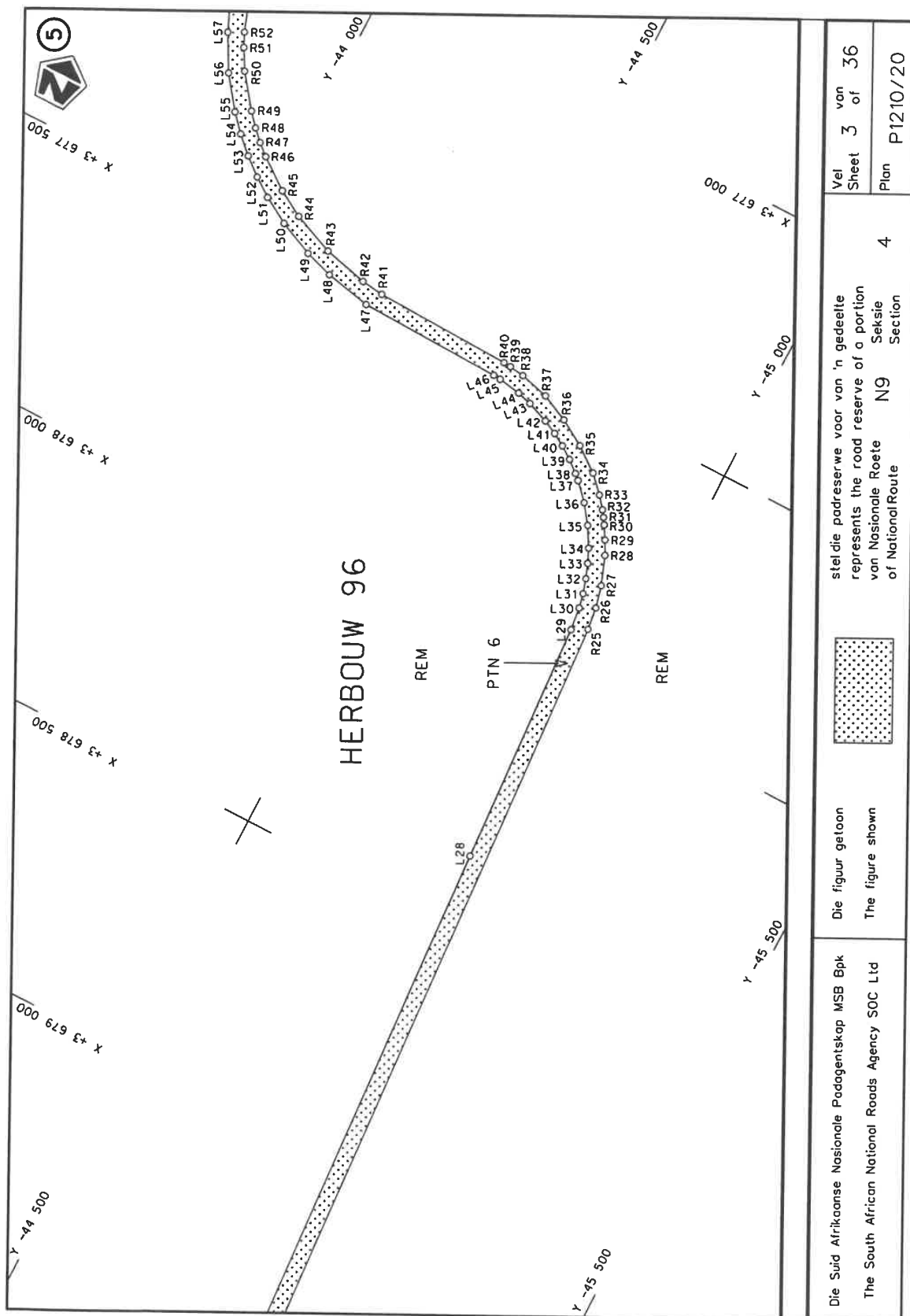
Kragtens Artikel 40(1)(b) van die Suid Afrikaanse Nasionale Padagentskap Beperk en Nasionale Paaie Wet 1998 (Wet No.7 van 1998), wysig ek hiermee Verklaring No. 567 van 2009 deur dit in sy geheel te vervang met bygaande velle 1 tot 36 van Plan No. P1210/20.

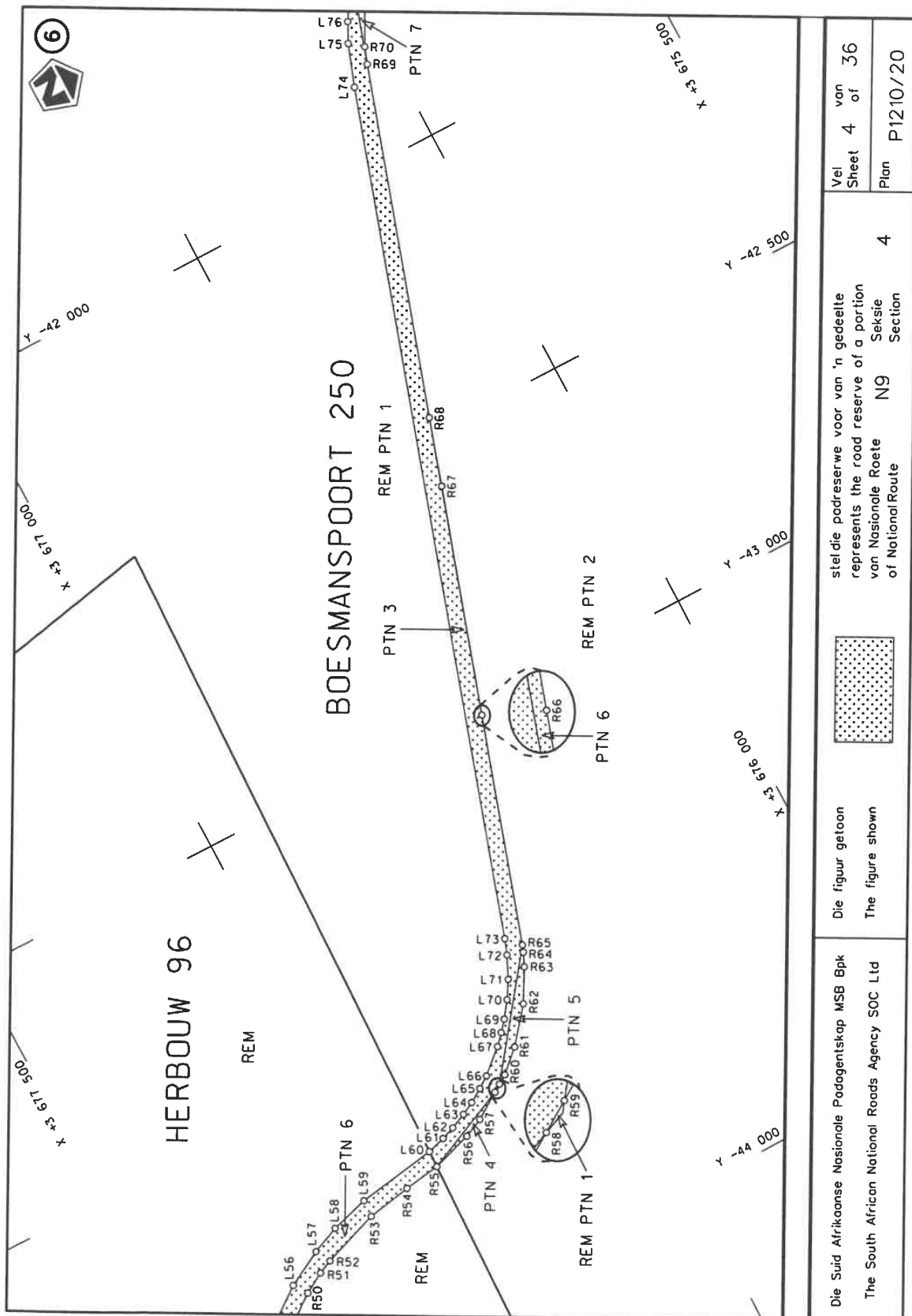
**(Nasionale Pad N9 Seksie 4: Willowmore – Aberdeen)**

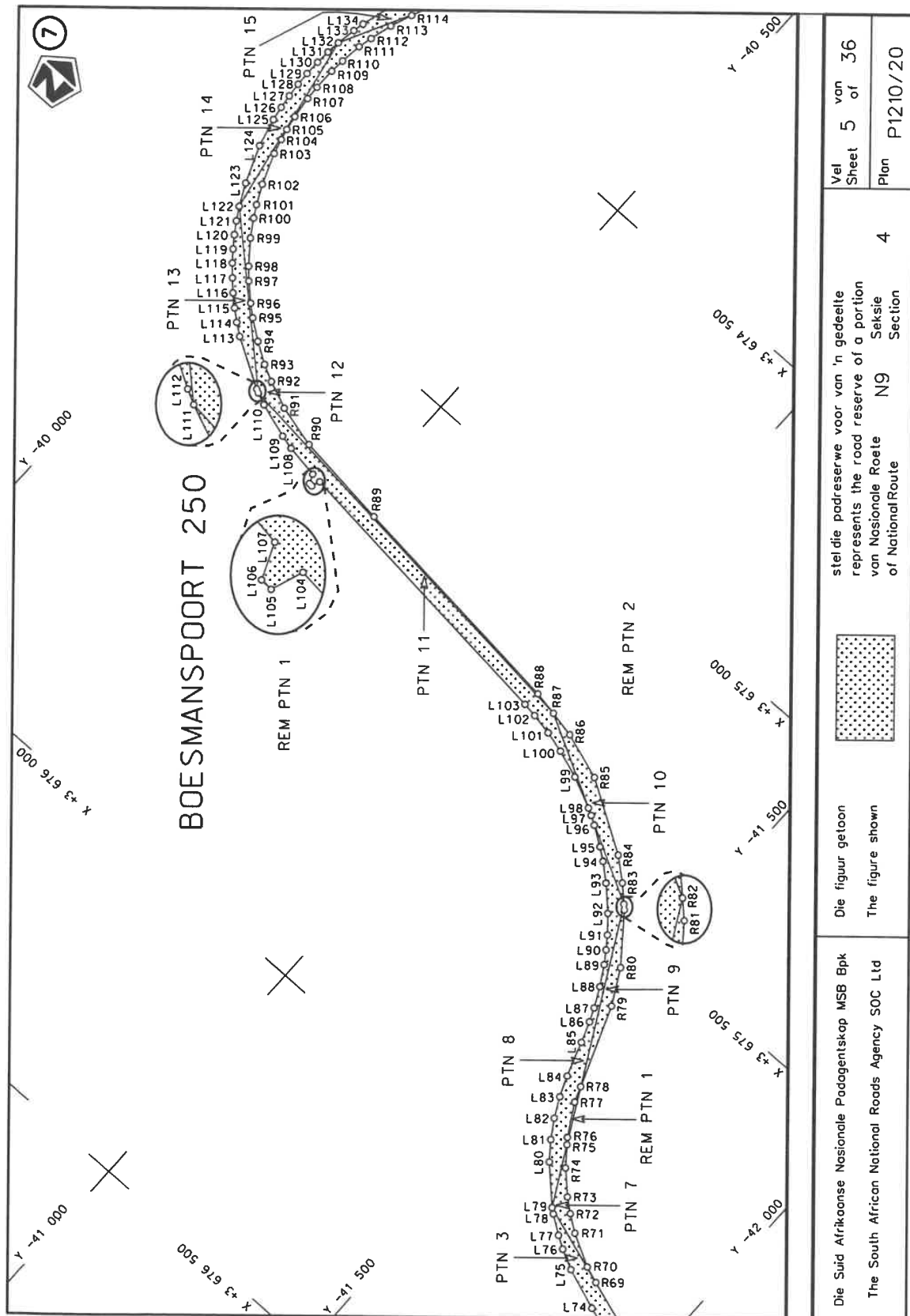
  
**MINISTER VAN VERVOER**





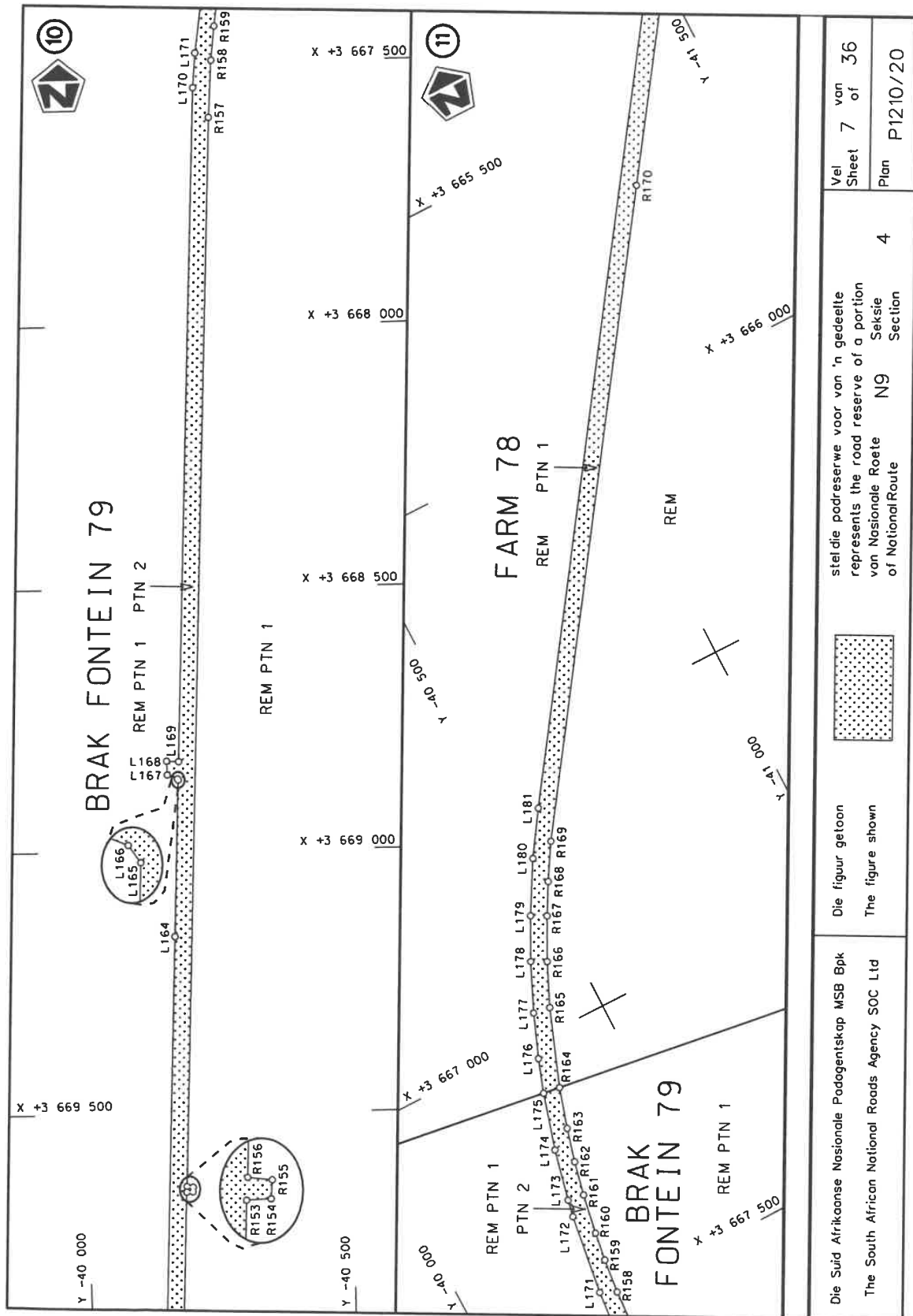


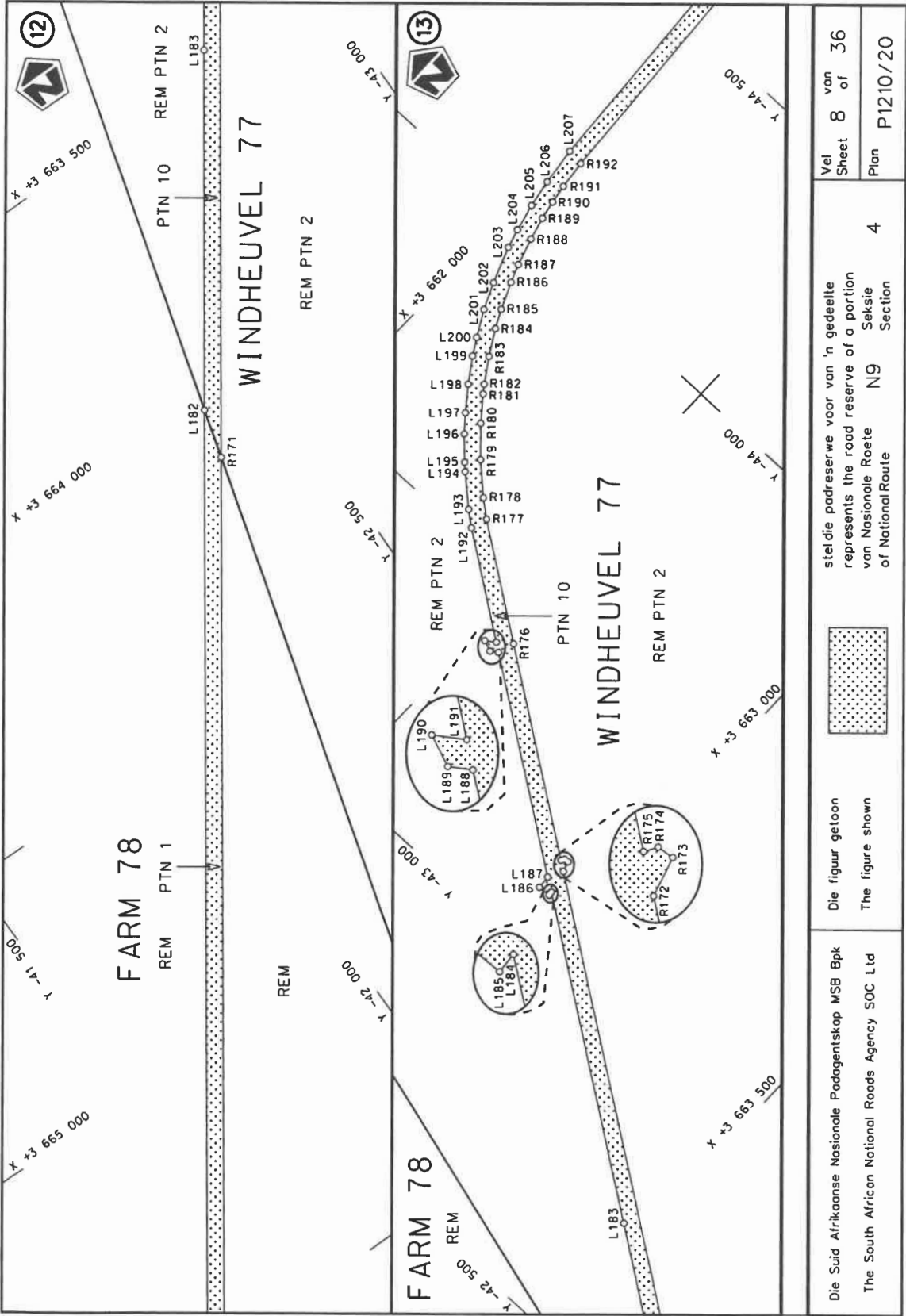


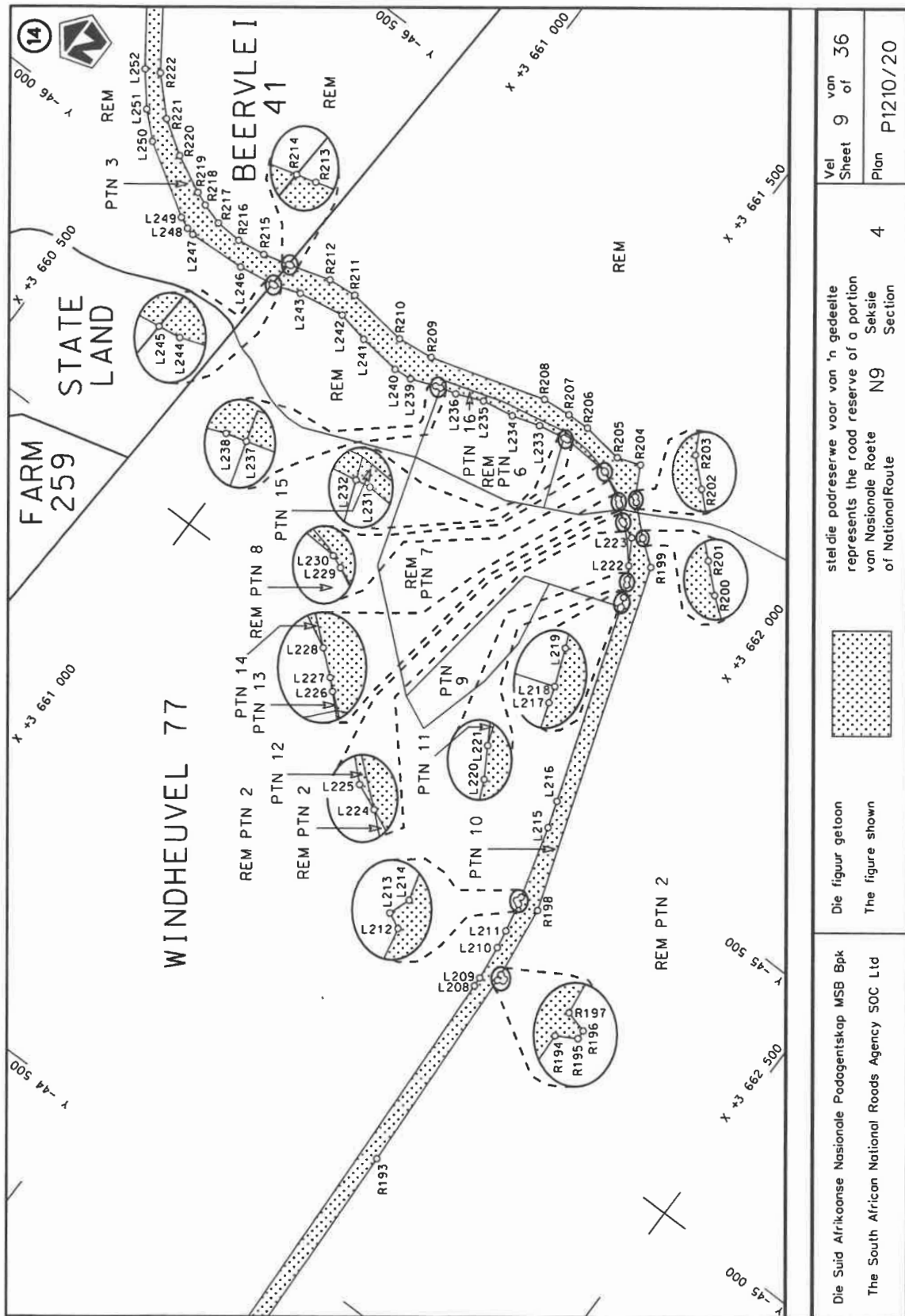


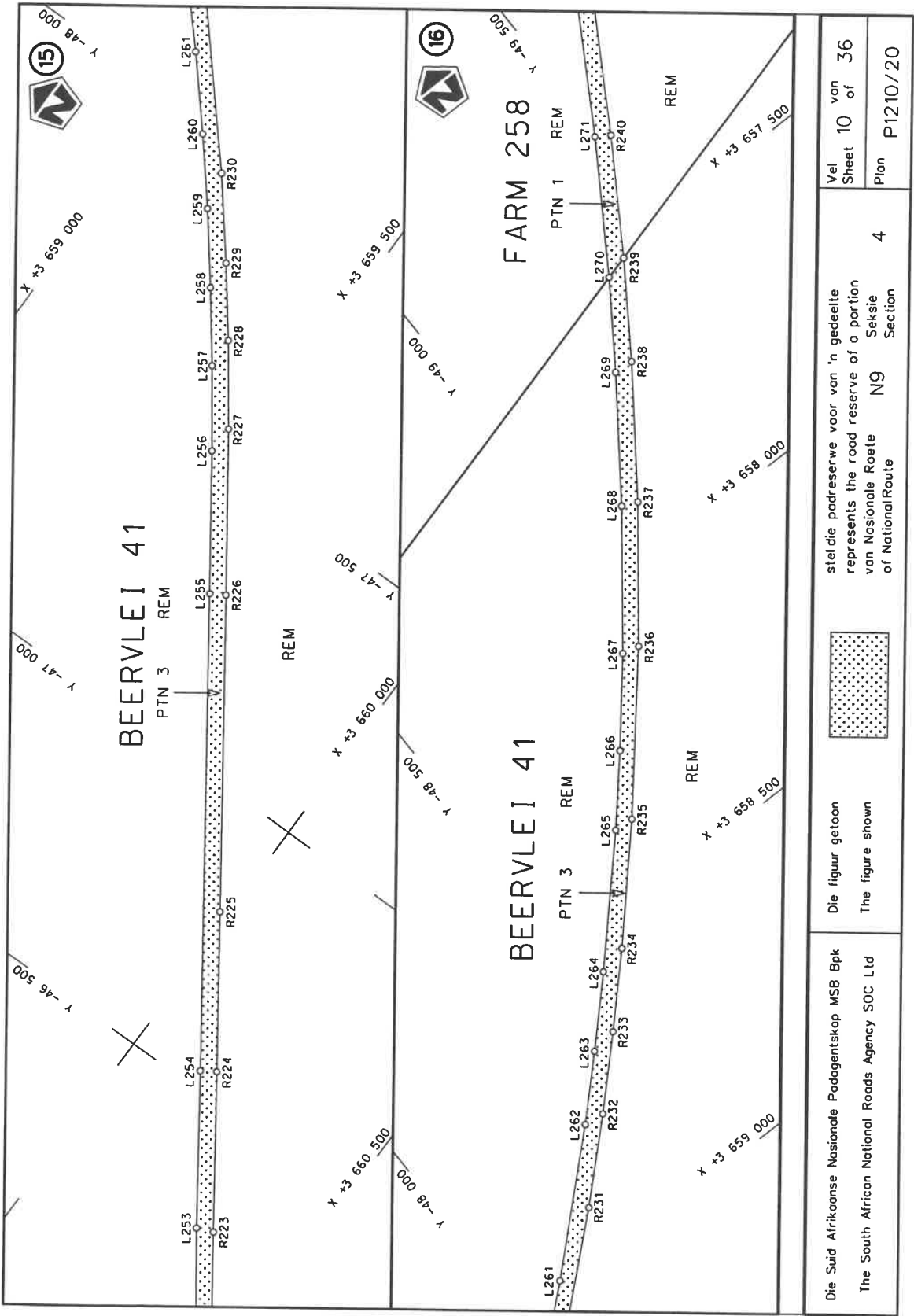


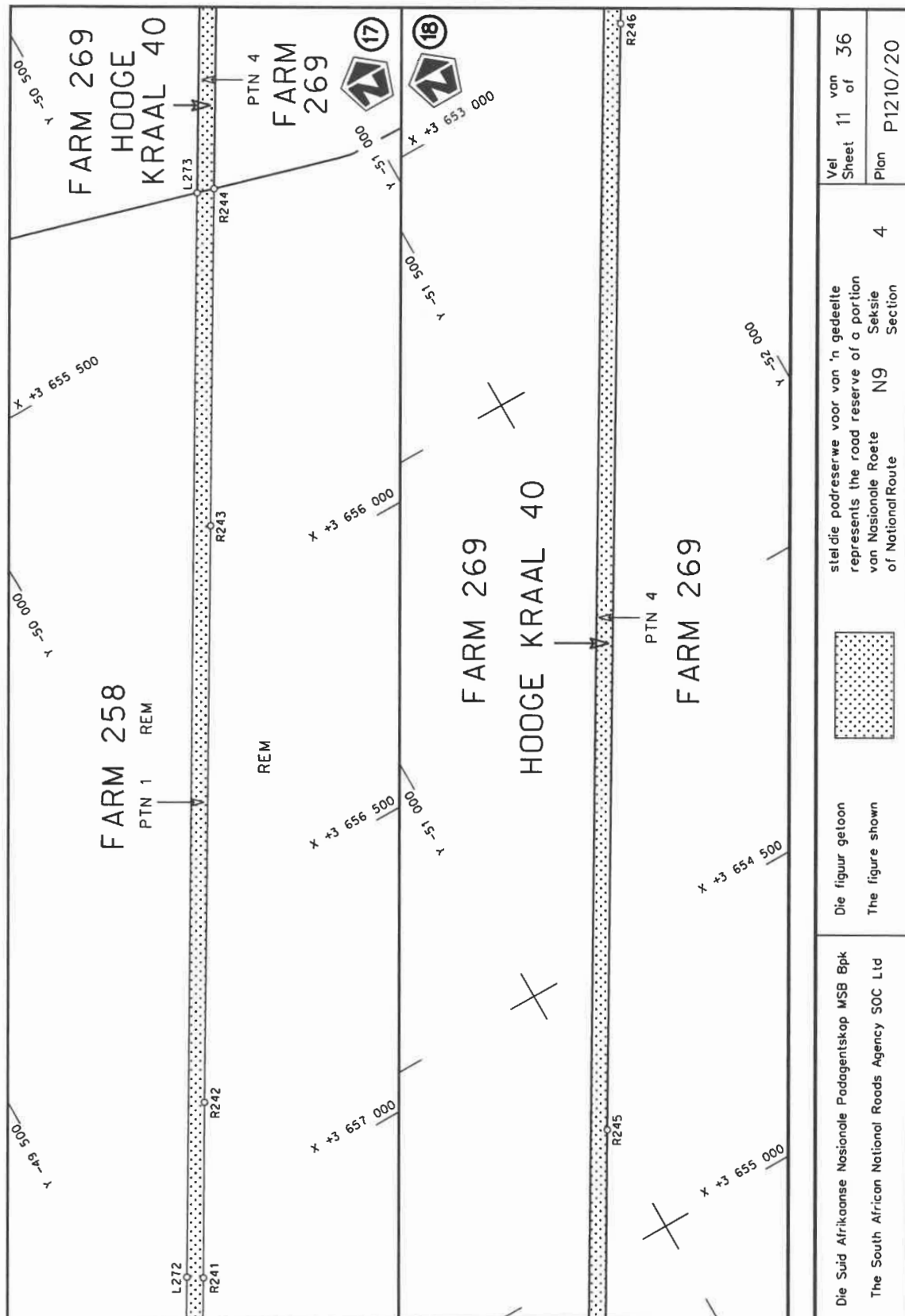


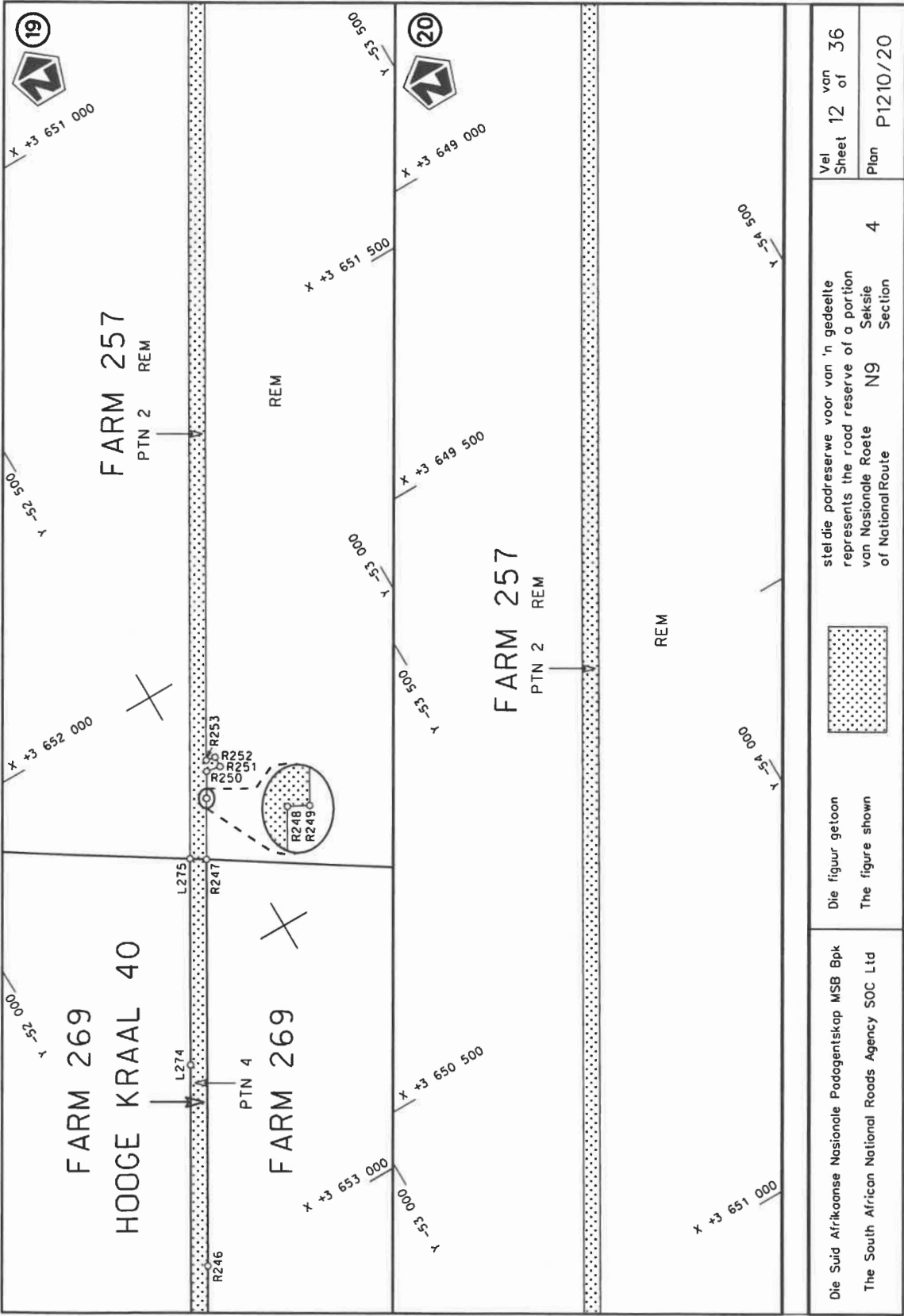




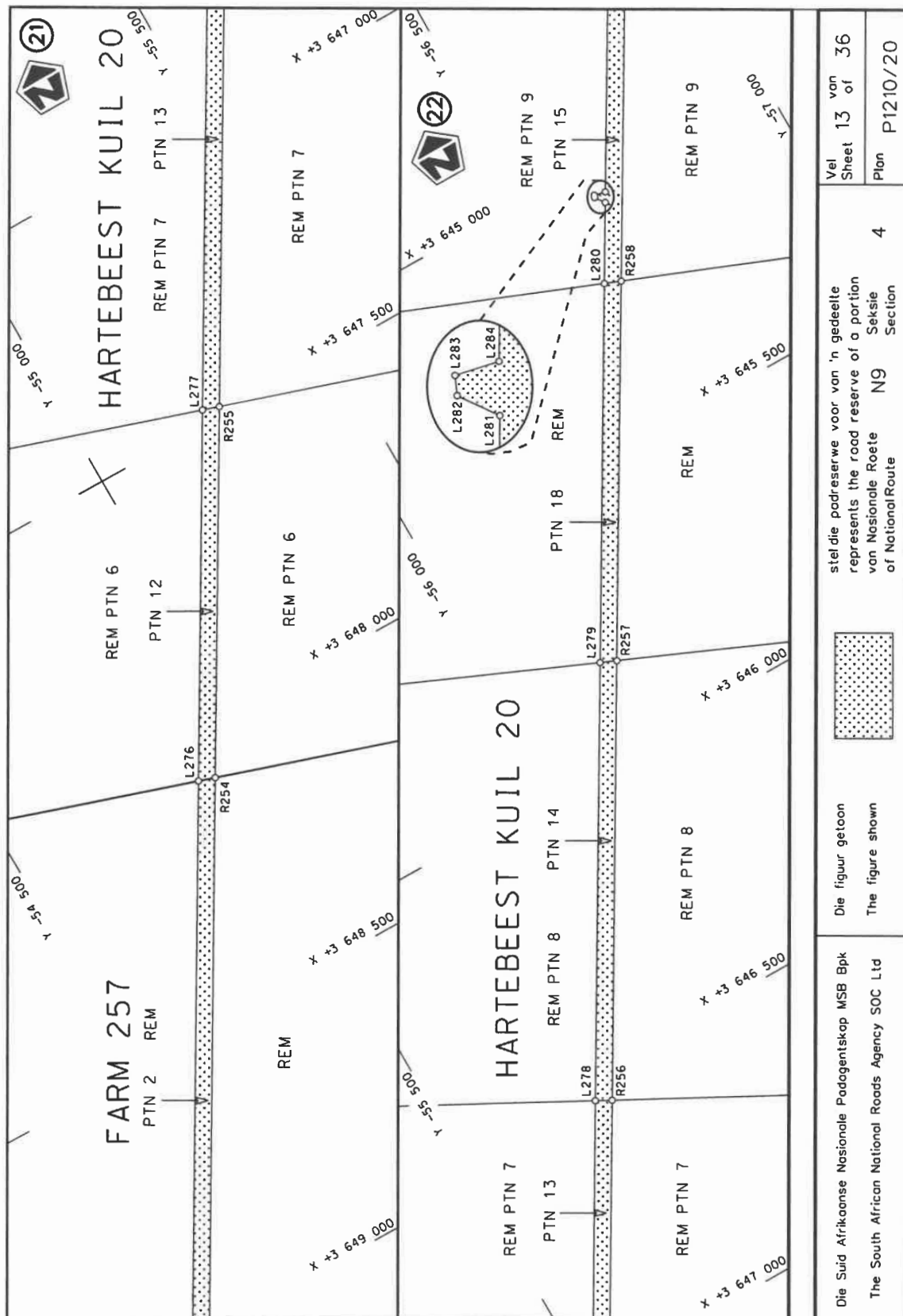


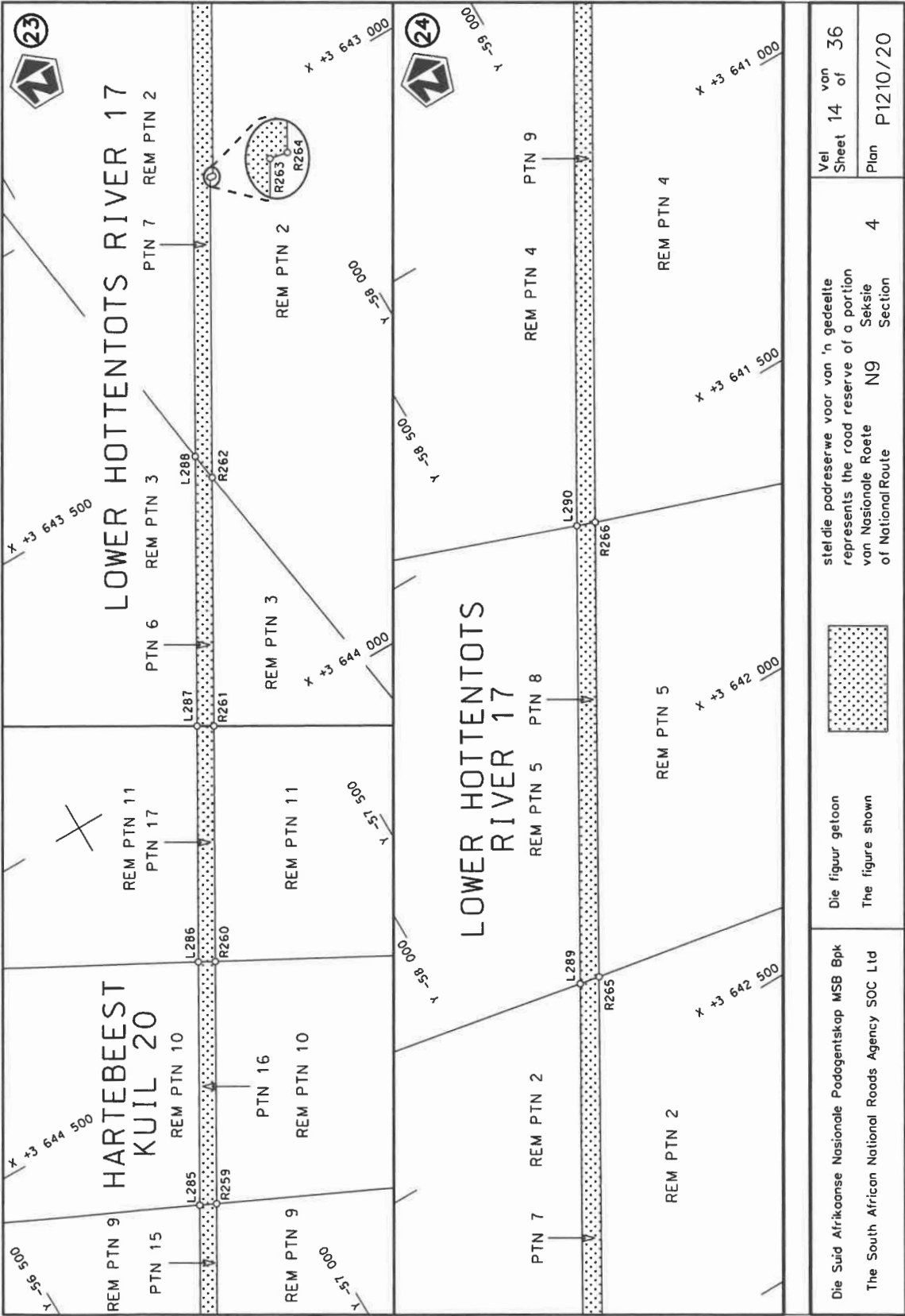




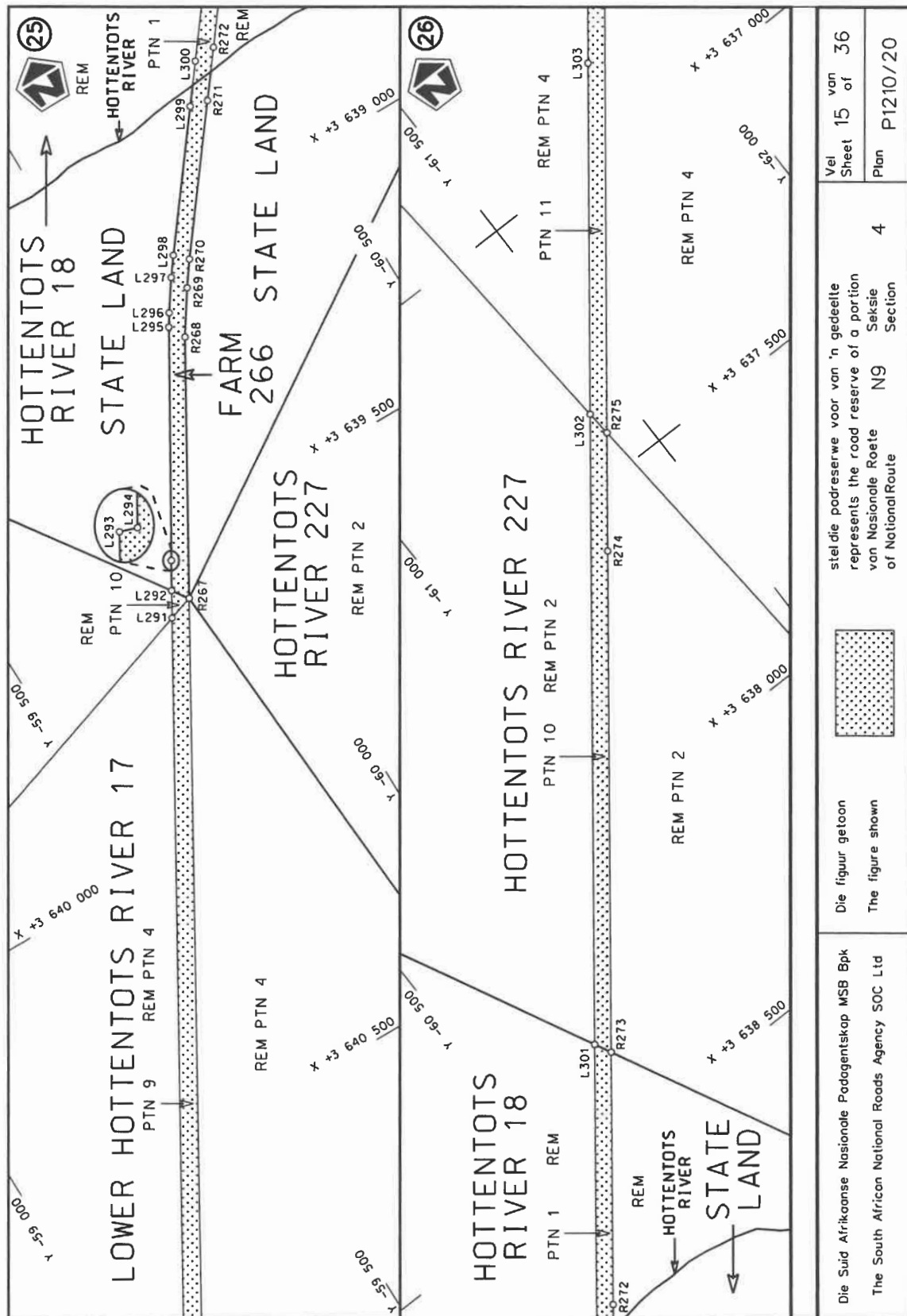


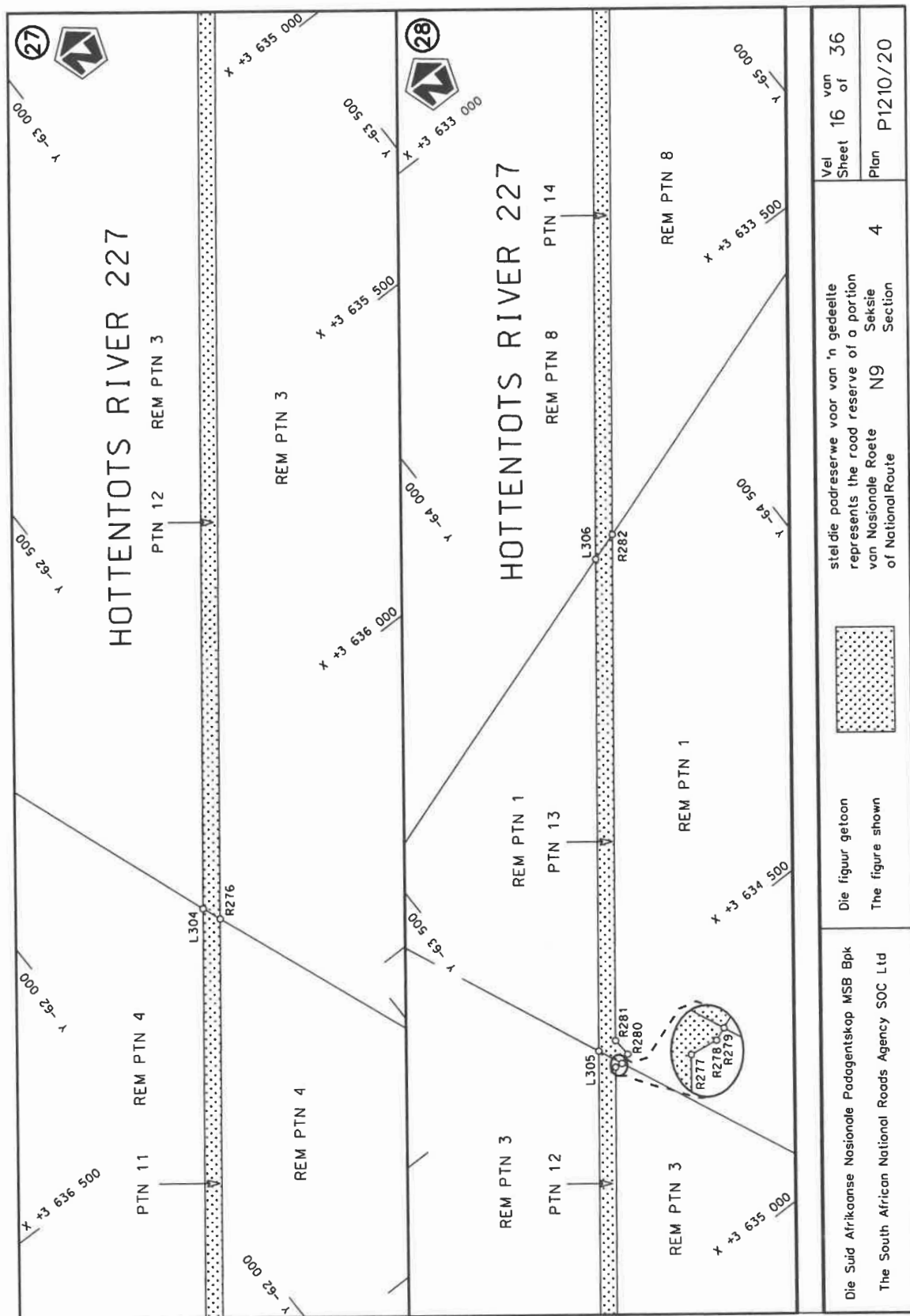


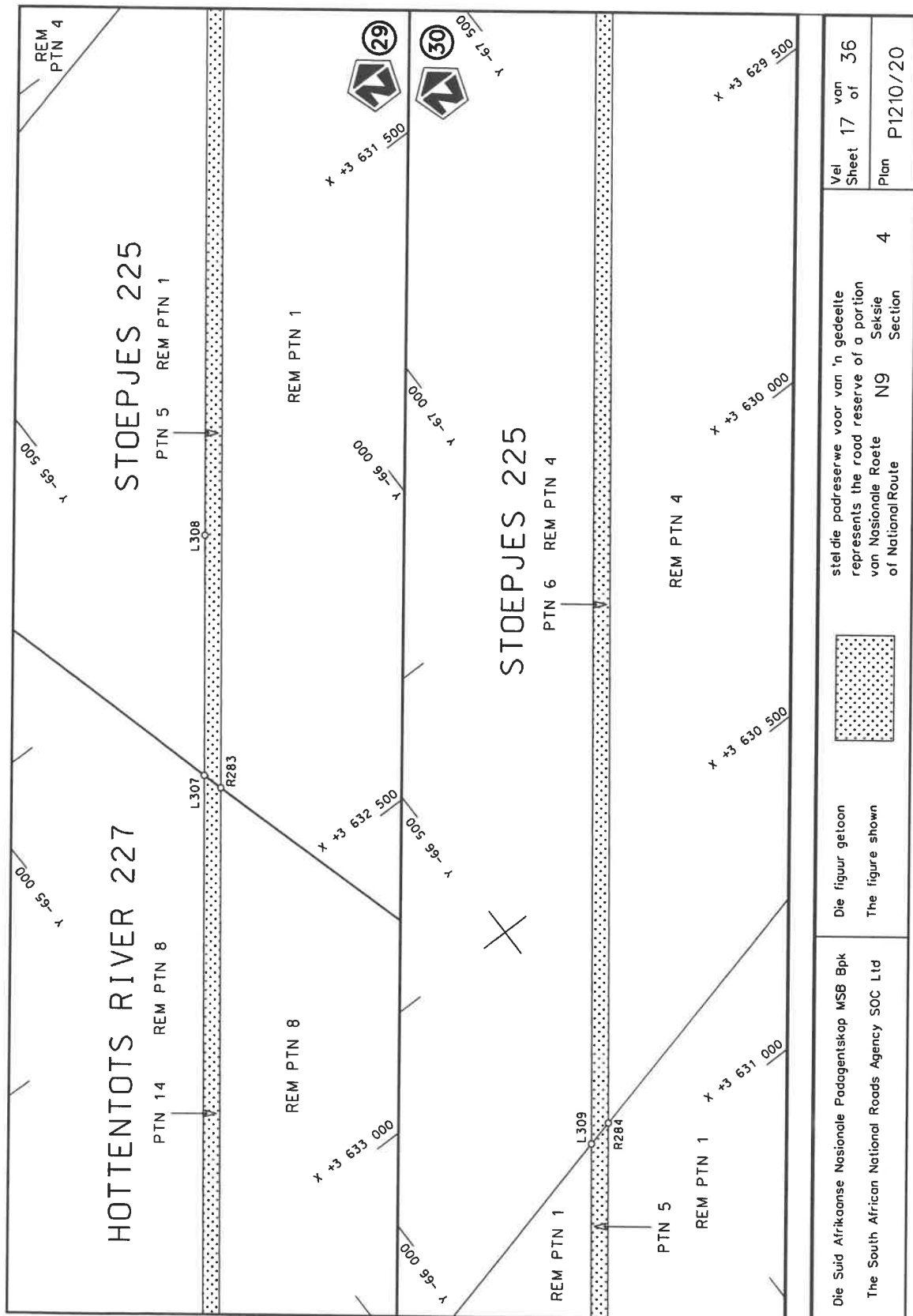


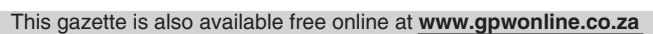


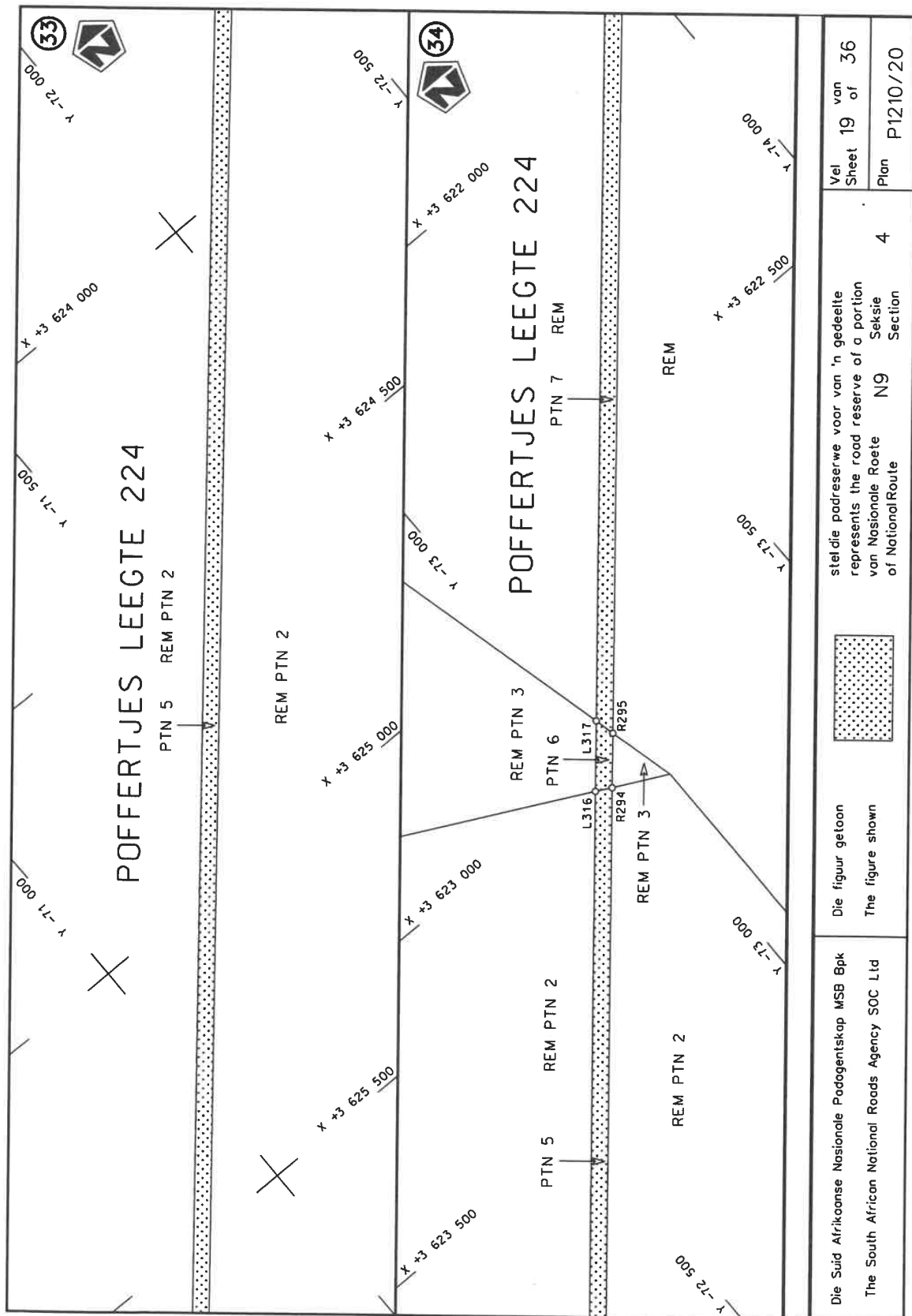


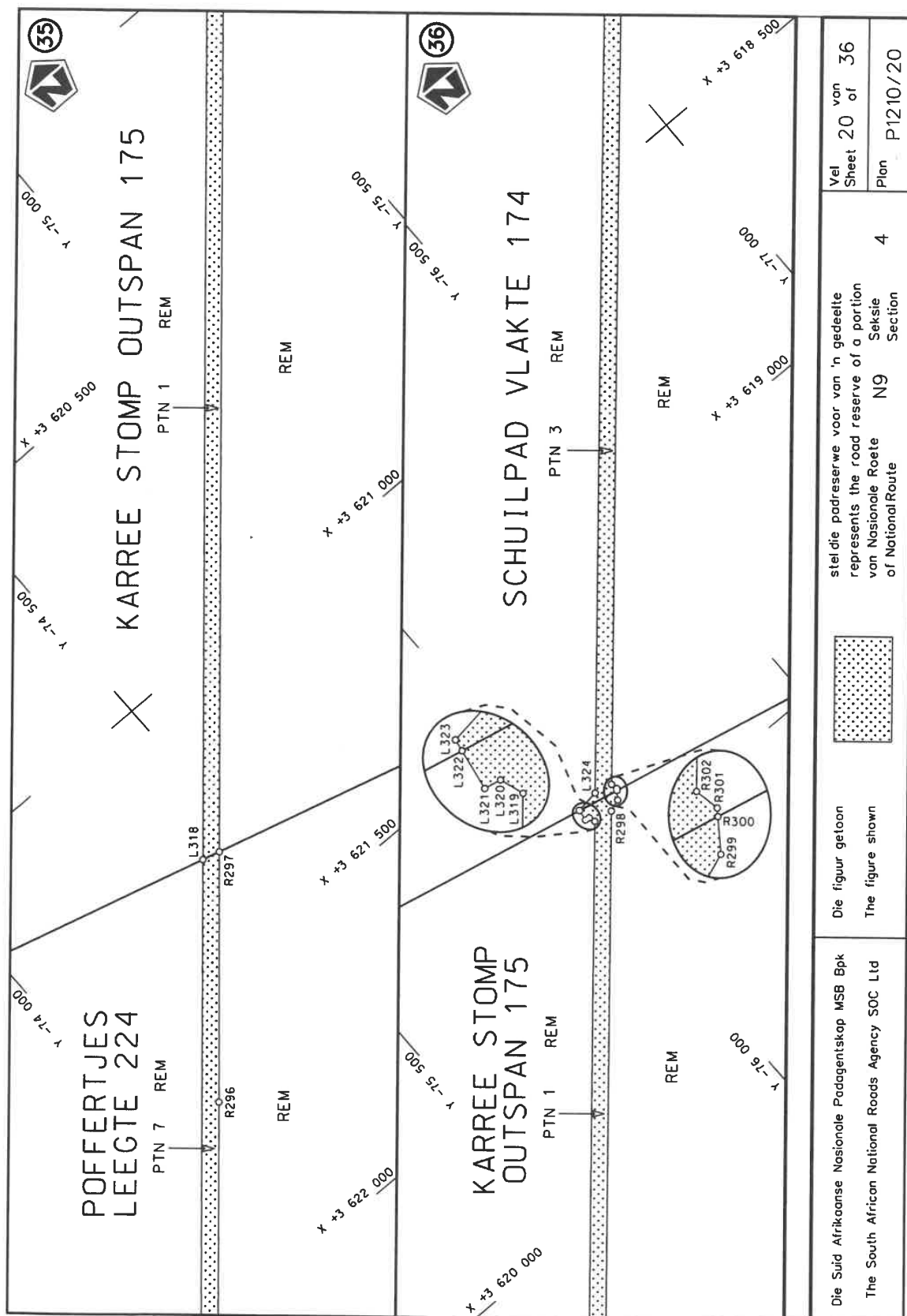




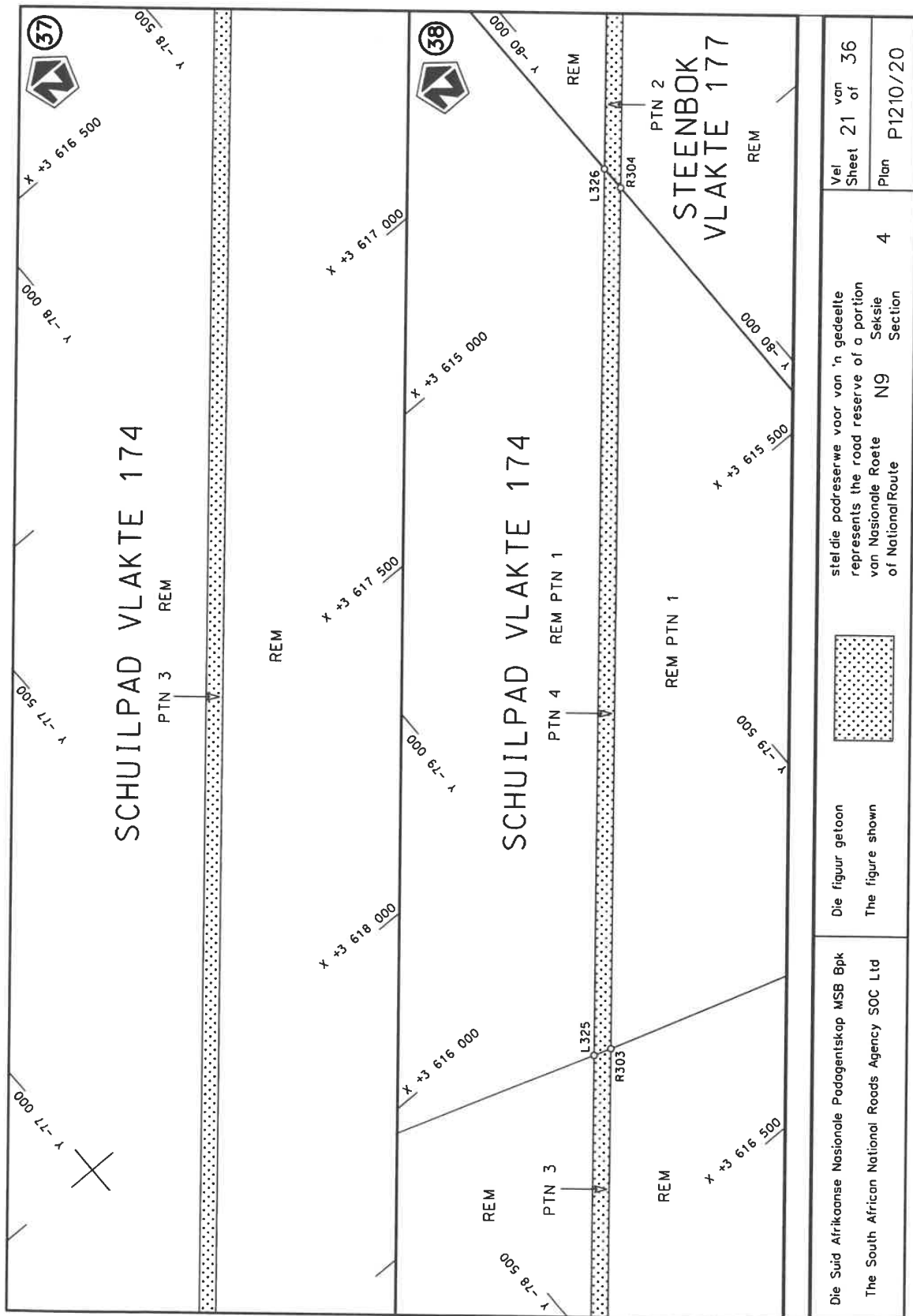


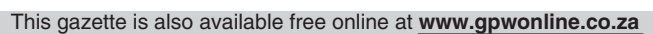






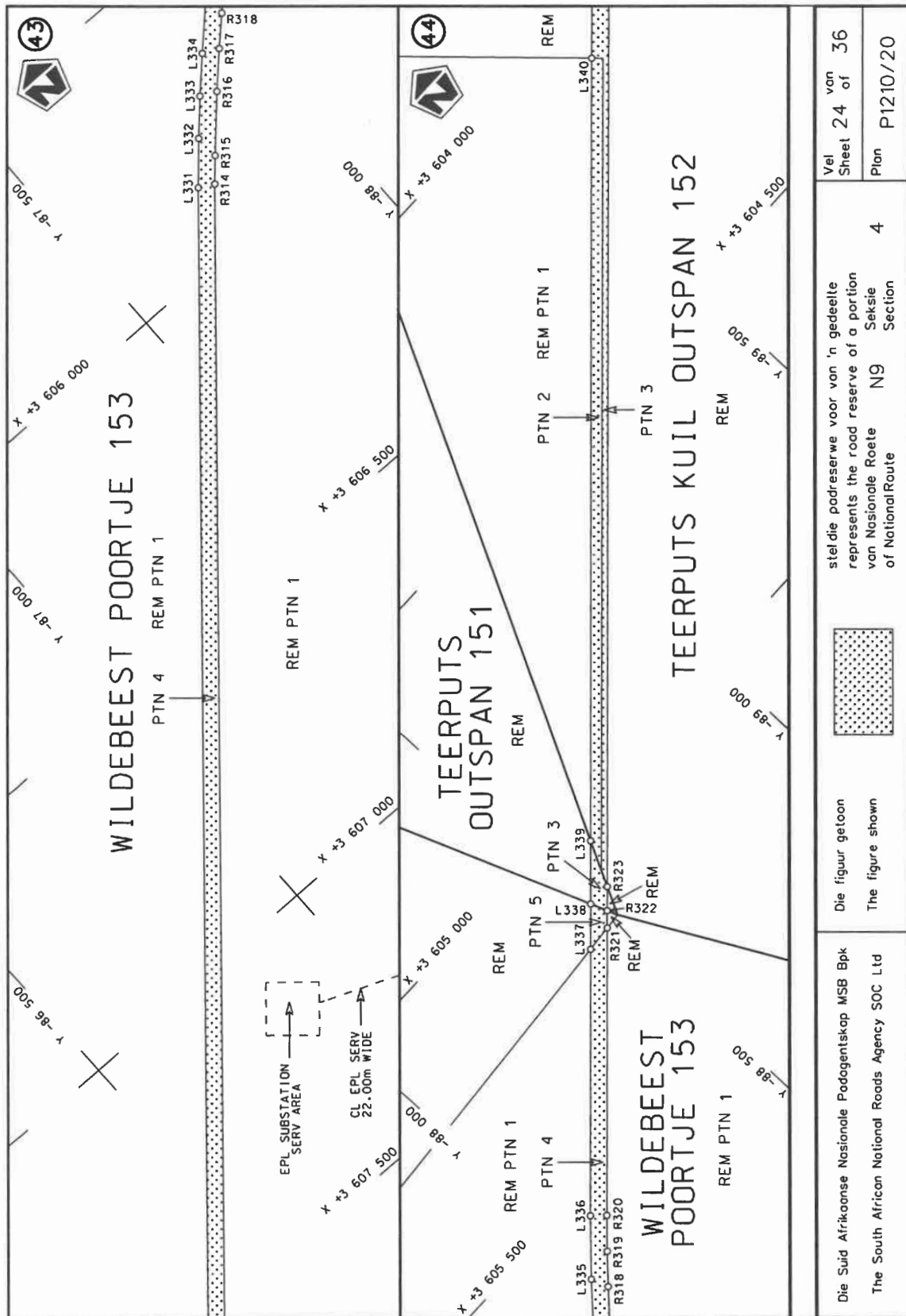


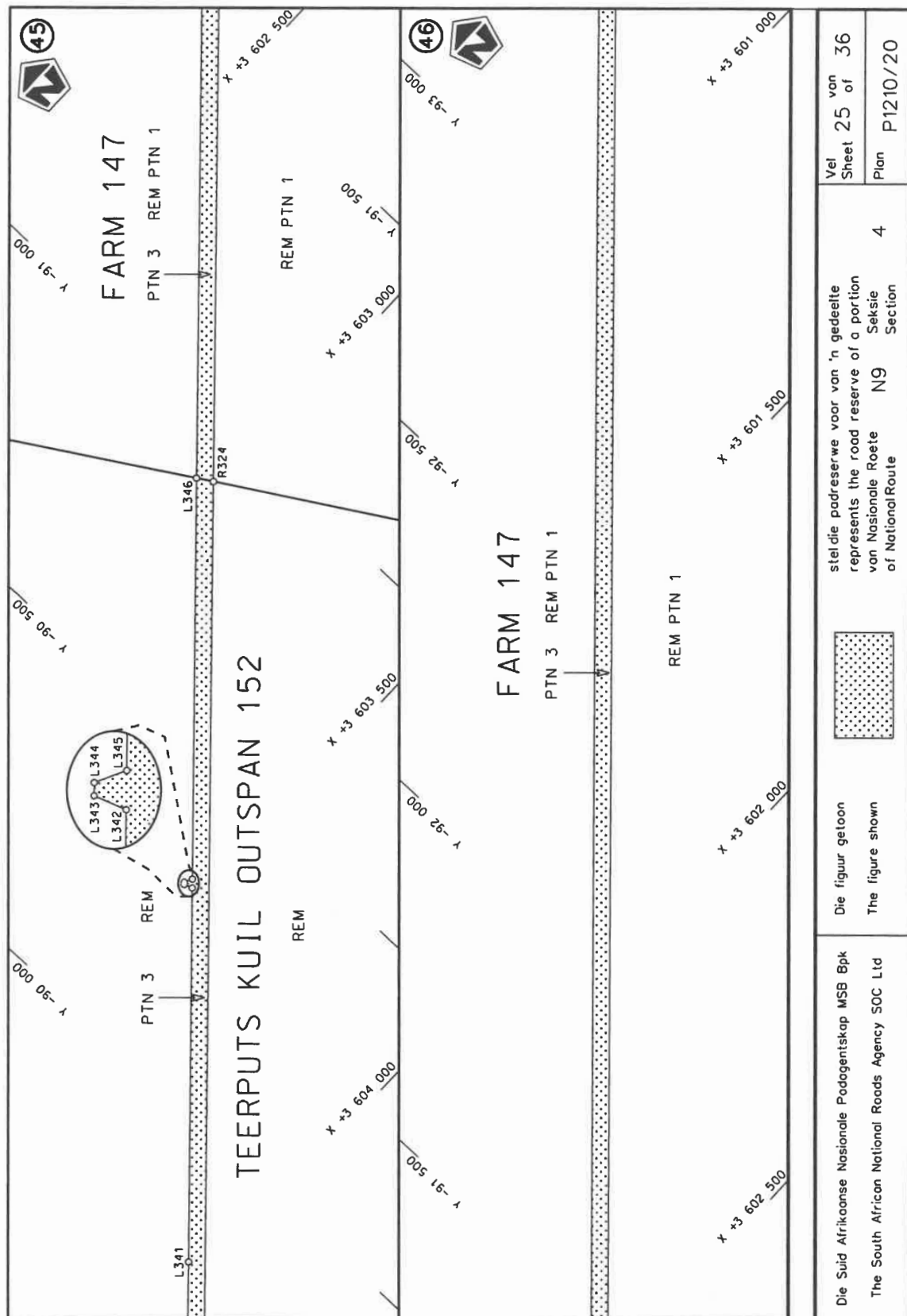


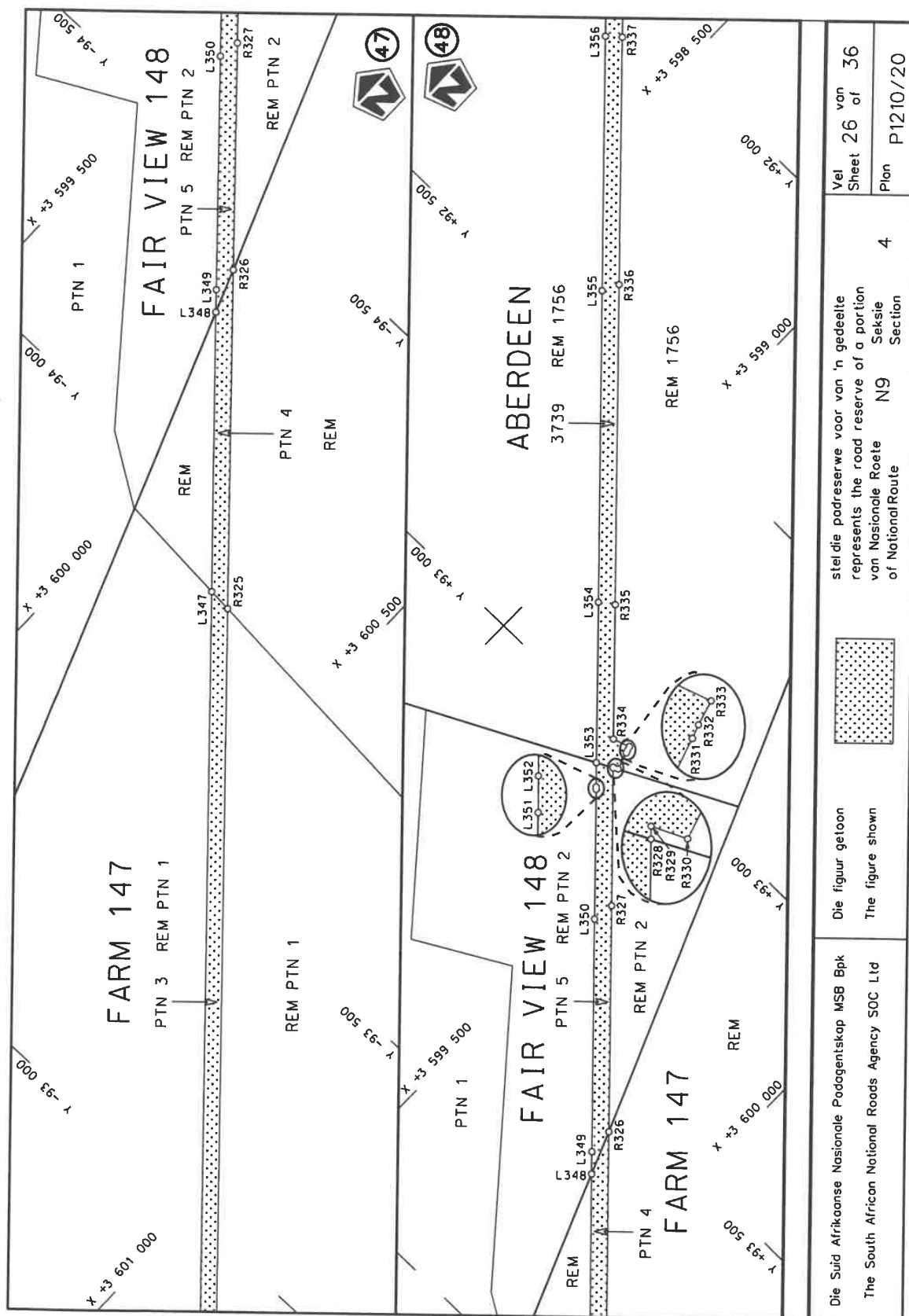


















PADRESERVE KOÖRDINATE / ROAD RESERVE CO-ORDINATES					
LINKERKANT/LEFT HAND SIDE			REGTERKANT/RIGHT HAND SIDE		
	Y	X	WG 23°	Y	X
L1	-44 680.85	3 685 565.03		R1	-44 708.42 3 685 580.45
L2	-44 692.59	3 685 542.28		R2	-44 720.65 3 685 566.76
L3	-44 797.01	3 685 457.04		R3	-44 734.07 3 685 565.86
L4	-45 101.44	3 685 216.40		R4	-44 774.20 3 685 520.21
L5	-45 154.14	3 685 165.75		R5	-44 804.98 3 685 490.97
L6	-45 182.86	3 685 131.92		R6	-45 117.48 3 685 243.18
L7	-45 208.74	3 685 096.79		R7	-45 182.73 3 685 181.27
L8	-45 230.51	3 685 061.26		R8	-45 240.11 3 685 113.80
L9	-45 291.01	3 684 912.32		R9	-45 280.10 3 685 033.75
L10	-45 301.43	3 684 869.44		R10	-45 313.70 3 684 949.64
L11	-45 302.54	3 684 861.21		R11	-45 347.68 3 684 774.17
L12	-45 310.19	3 684 789.57		R12	-45 351.24 3 684 743.80
L13	-45 310.76	3 684 782.36		R13	-45 355.83 3 684 725.46
L14	-45 310.06	3 684 738.55		R14	-45 337.30 3 684 660.02
L15	-45 298.45	3 684 555.32		R15	-45 333.50 3 684 574.46
L16	-45 290.82	3 684 435.71		R16	-45 332.67 3 684 561.75
L17	-45 262.35	3 683 989.10		R17	-45 315.75 3 684 304.90
L18	-45 247.91	3 683 762.79		R18	-45 272.76 3 683 655.98
L19	-45 241.25	3 683 658.21		R19	-45 240.12 3 683 144.25
L20	-45 235.25	3 683 563.26		R20	-45 155.55 3 681 818.31
L21	-45 232.79	3 683 524.59		R21	-45 120.19 3 681 264.09
L22	-45 205.97	3 683 104.14		R22	-45 129.60 3 681 251.18
L23	-45 124.91	3 681 824.95		R23	-45 128.33 3 681 239.95
L24	-45 099.80	3 681 438.78		R24	-45 118.06 3 681 231.59
L25	-45 088.32	3 681 433.08		R25	-44 903.78 3 677 879.49
L26	-45 088.14	3 681 425.57		R26	-44 898.00 3 677 836.48
L27	-45 098.59	3 681 418.38		R27	-44 887.82 3 677 794.19
L28	-44 904.13	3 678 366.04		R28	-44 867.49 3 677 739.47
L29	-44 875.08	3 677 895.13		R29	-44 854.03 3 677 713.56
L30	-44 869.83	3 677 851.23		R30	-44 839.38 3 677 688.73
L31	-44 863.79	3 677 823.56		R31	-44 831.71 3 677 676.60
L32	-44 855.50	3 677 795.69		R32	-44 823.24 3 677 664.79
L33	-44 845.32	3 677 768.30		R33	-44 804.96 3 677 642.30
L34	-44 833.37	3 677 741.81		R34	-44 775.01 3 677 610.92
L35	-44 811.76	3 677 704.21		R35	-44 728.69 3 677 576.21
L36	-44 785.86	3 677 668.91		R36	-44 678.96 3 677 546.80
L37	-44 756.17	3 677 636.88		R37	-44 626.76 3 677 522.41
L38	-44 745.63	3 677 627.02		R38	-44 570.95 3 677 507.77
L39	-44 723.28	3 677 608.68		R39	-44 542.28 3 677 503.48
L40	-44 699.23	3 677 592.03		R40	-44 527.98 3 677 502.18
L41	-44 675.08	3 677 577.71		R41	-44 263.47 3 677 493.62
L42	-44 648.78	3 677 564.72		R42	-44 220.47 3 677 488.04
L43	-44 607.52	3 677 548.86		R43	-44 135.40 3 677 467.34
L44	-44 579.39	3 677 541.08		R44	-44 055.50 3 677 434.55
L45	-44 536.32	3 677 533.62		R45	-44 005.50 3 677 405.89
L46	-44 521.98	3 677 532.45		R46	-43 947.48 3 677 362.93
L47	-44 246.05	3 677 524.44		R47	-43 925.38 3 677 344.10
L48	-44 158.38	3 677 506.30		R48	-43 904.86 3 677 323.60
L49	-44 103.76	3 677 488.84		R49	-43 883.17 3 677 298.42
L50	-44 036.98	3 677 459.24		R50	-43 836.74 3 677 237.33
L51	-43 986.42	3 677 429.87		R51	-43 814.39 3 677 198.08
			Vel Sheet	29 Van of	36 P1210/20

PADRESERWE KOÖRDINATE / ROAD RESERVE CO-ORDINATES									
LINKERKANT/LEFT HAND SIDE					REGTERKANT/RIGHT HAND SIDE				
	Y		X	WG 23°		Y		X	
L52	-43 950.70	3	677	404.79	R52	-43 802.12	3	677	171.82
L53	-43 917.18	3	677	377.04	R53	-43 763.63	3	677	063.01
L54	-43 885.35	3	677	346.76	R54	-43 748.35	3	676	978.22
L55	-43 856.16	3	677	314.36	R55	-43 738.24	3	676	908.64
L56	-43 811.27	3	677	254.25	R56	-43 713.57	3	676	831.06
L57	-43 774.31	3	677	186.59	R57	-43 696.83	3	676	794.70
L58	-43 752.07	3	677	133.98	R58	-43 664.58	3	676	744.75
L59	-43 731.14	3	677	061.19	R59	-43 655.07	3	676	730.02
L60	-43 706.24	3	676	907.66	R60	-43 643.90	3	676	712.71
L61	-43 696.34	3	676	873.22	R61	-43 605.98	3	676	671.52
L62	-43 687.13	3	676	847.41	R62	-43 540.86	3	676	618.49
L63	-43 673.77	3	676	817.22	R63	-43 479.82	3	676	583.91
L64	-43 661.19	3	676	793.00	R64	-43 454.24	3	676	572.52
L65	-43 645.02	3	676	766.99	R65	-43 441.16	3	676	567.55
L66	-43 629.39	3	676	744.54	R66	-43 018.64	3	676	430.59
L67	-43 590.17	3	676	699.77	R67	-42 598.59	3	676	294.78
L68	-43 570.01	3	676	681.06	R68	-42 472.62	3	676	254.68
L69	-43 549.72	3	676	664.04	R69	-41 824.84	3	676	045.42
L70	-43 519.70	3	676	642.07	R70	-41 793.24	3	676	034.15
L71	-43 486.48	3	676	622.07	R71	-41 733.09	3	676	002.10
L72	-43 444.32	3	676	602.44	R72	-41 701.81	3	675	980.22
L73	-43 415.02	3	676	591.53	R73	-41 676.49	3	675	960.22
L74	-41 851.99	3	676	086.93	R74	-41 637.27	3	675	921.54
L75	-41 773.29	3	676	058.69	R75	-41 609.78	3	675	886.76
L76	-41 736.07	3	676	040.08	R76	-41 601.06	3	675	875.72
L77	-41 712.50	3	676	025.79	R77	-41 566.93	3	675	816.34
L78	-41 678.07	3	676	002.08	R78	-41 555.78	3	675	787.01
L79	-41 668.31	3	675	994.86	R79	-41 497.49	3	675	633.71
L80	-41 606.63	3	675	933.50	R80	-41 461.62	3	675	567.53
L81	-41 580.33	3	675	899.92	R81	-41 393.75	3	675	480.91
L82	-41 558.26	3	675	865.15	R82	-41 386.01	3	675	473.44
L83	-41 539.06	3	675	827.51	R83	-41 357.04	3	675	445.43
L84	-41 523.04	3	675	788.92	R84	-41 315.91	3	675	411.28
L85	-41 500.59	3	675	723.29	R85	-41 184.01	3	675	331.51
L86	-41 486.23	3	675	683.98	R86	-41 095.25	3	675	302.23
L87	-41 475.16	3	675	658.27	R87	-41 045.09	3	675	292.55
L88	-41 456.28	3	675	620.96	R88	-40 998.40	3	675	284.58
L89	-41 434.56	3	675	584.22	R89	-40 545.83	3	675	239.47
L90	-41 418.50	3	675	560.83	R90	-40 362.98	3	675	219.44
L91	-41 401.60	3	675	537.97	R91	-40 282.18	3	675	199.11
L92	-41 374.97	3	675	507.06	R92	-40 230.63	3	675	177.58
L93	-41 334.06	3	675	466.42	R93	-40 199.47	3	675	162.17
L94	-41 302.11	3	675	439.31	R94	-40 160.82	3	675	138.05
L95	-41 279.72	3	675	422.42	R95	-40 123.83	3	675	111.37
L96	-41 244.12	3	675	399.15	R96	-40 102.46	3	675	093.21
L97	-41 227.46	3	675	389.31	R97	-40 071.83	3	675	064.26
L98	-41 214.19	3	675	382.27	R98	-40 052.97	3	675	043.71
L99	-41 155.98	3	675	355.27	R99	-40 019.91	3	675	001.47
L100	-41 102.86	3	675	337.07	R100	-39 998.93	3	674	969.41
L101	-41 062.29	3	675	326.75	R101	-39 986.26	3	674	946.87
L102	-41 021.49	3	675	319.34	R102	-39 968.53	3	674	910.73
					<div> <div>Vel</div> <div>30</div> <div>Van</div> <div>of</div> <div>36</div> </div> <div>P1210/20</div>				



PADRESERVE KOÖRDINATE / ROAD RESERVE CO-ORDINATES									
LINKERKANT/LEFT HAND SIDE					REGTERKANT/RIGHT HAND SIDE				
	Y		X	WG 23°		Y		X	
L103	-40 993.60	3	675	315.58	R103	-39 946.43	3	674	852.45
L104	-40 425.07	3	675	258.46	R104	-39 938.68	3	674	823.84
L105	-40 419.28	3	675	274.47	R105	-39 933.78	3	674	802.56
L106	-40 412.91	3	675	274.16	R106	-39 928.93	3	674	774.61
L107	-40 405.62	3	675	256.65	R107	-39 923.99	3	674	733.03
L108	-40 342.27	3	675	247.29	R108	-39 922.79	3	674	705.44
L109	-40 315.14	3	675	240.61	R109	-39 923.47	3	674	663.95
L110	-40 249.33	3	675	219.75	R110	-39 925.94	3	674	636.11
L111	-40 226.51	3	675	210.36	R111	-39 931.21	3	674	595.33
L112	-40 219.38	3	675	206.76	R112	-39 937.67	3	674	568.70
L113	-40 128.70	3	675	154.14	R113	-39 949.52	3	674	526.39
L114	-40 106.89	3	675	137.87	R114	-39 965.25	3	674	485.28
L115	-40 085.78	3	675	120.32	R115	-39 971.06	3	674	472.02
L116	-40 064.51	3	675	100.90	R116	-39 977.20	3	674	457.99
L117	-40 044.66	3	675	080.58	R117	-39 991.35	3	674	431.94
L118	-40 025.85	3	675	059.66	R118	-39 993.55	3	674	428.38
L119	-40 009.10	3	675	038.85	R119	-40 062.38	3	674	317.10
L120	-39 993.00	3	675	017.20	R120	-40 077.35	3	674	298.78
L121	-39 978.09	3	674	995.13	R121	-40 086.03	3	674	286.74
L122	-39 963.75	3	674	970.86	R122	-40 101.15	3	674	262.97
L123	-39 943.49	3	674	930.00	R123	-40 133.71	3	674	207.78
L124	-39 916.04	3	674	859.88	R124	-40 145.62	3	674	185.40
L125	-39 902.54	3	674	805.70	R125	-40 164.89	3	674	135.33
L126	-39 897.84	3	674	778.83	R126	-40 185.20	3	674	077.94
L127	-39 894.66	3	674	752.32	R127	-40 197.65	3	674	034.93
L128	-39 892.53	3	674	724.73	R128	-40 198.76	3	674	030.29
L129	-39 891.66	3	674	698.42	R129	-40 205.07	3	674	005.95
L130	-39 892.14	3	674	669.37	R130	-40 213.87	3	673	961.98
L131	-39 893.98	3	674	641.87	R131	-40 218.50	3	673	932.77
L132	-39 896.94	3	674	615.80	R132	-40 221.87	3	673	903.17
L133	-39 903.52	3	674	578.90	R133	-40 225.56	3	673	858.78
L134	-39 908.04	3	674	558.41	R134	-40 226.36	3	673	785.03
L135	-39 919.43	3	674	518.97	R135	-40 229.49	3	673	745.73
L136	-39 933.98	3	674	479.80	R136	-40 218.64	3	673	744.95
L137	-39 967.68	3	674	410.69	R137	-40 221.30	3	673	710.58
L138	-40 062.79	3	674	267.00	R138	-40 209.70	3	673	637.41
L139	-40 076.98	3	674	247.02	R139	-40 200.13	3	673	598.21
L140	-40 068.79	3	674	242.00	R140	-40 198.75	3	673	592.56
L141	-40 084.75	3	674	221.26	R141	-40 192.02	3	673	564.98
L142	-40 106.25	3	674	189.80	R142	-40 162.63	3	673	480.18
L143	-40 132.43	3	674	133.53	R143	-40 137.18	3	673	423.21
L144	-40 147.60	3	674	092.72	R144	-40 086.09	3	673	316.21
L145	-40 164.55	3	674	037.25	R145	-40 064.81	3	673	250.50
L146	-40 180.79	3	673	971.58	R146	-40 059.90	3	673	223.01
L147	-40 190.91	3	673	904.37	R147	-40 057.54	3	673	153.59
L148	-40 194.94	3	673	851.46	R148	-40 062.95	3	673	009.12
L149	-40 196.30	3	673	797.78	R149	-40 055.18	3	672	954.92
L150	-40 196.13	3	673	784.14	R150	-40 056.60	3	672	908.92
L151	-40 190.49	3	673	716.27	R151	-40 067.23	3	672	870.15
L152	-40 182.53	3	673	661.03	R152	-40 145.12	3	670	595.58
L153	-40 170.73	3	673	606.44	R153	-40 183.63	3	669	649.95
					<div> <div>Vel</div> <div>31</div> <div>Van</div> <div>36</div> <div>Sheet</div> <div>of</div> <div>P1210/20</div> </div>				

PADRESERVE KOÖRDINATE / ROAD RESERVE CO-ORDINATES									
LINKERKANT/LEFT HAND SIDE					REGTERKANT/RIGHT HAND SIDE				
	Y	X	WG 23°			Y	X		
L154	-40 163.62	3 673	579.65		R154	-40 195.31	3 669	649.51	
L155	-40 140.03	3 673	503.89		R155	-40 196.03	3 669	640.51	
L156	-40 067.85	3 673	351.72		R156	-40 184.38	3 669	639.08	
L157	-40 047.91	3 673	303.66		R157	-40 265.88	3 667	606.05	
L158	-40 038.91	3 673	272.94		R158	-40 272.66	3 667	497.59	
L159	-40 032.94	3 673	245.89		R159	-40 279.77	3 667	432.89	
L160	-40 025.61	3 673	201.70		R160	-40 287.63	3 667	379.12	
L161	-40 031.91	3 673	004.45		R161	-40 300.91	3 667	304.07	
L162	-40 064.03	3 672	046.64		R162	-40 315.06	3 667	240.33	
L163	-40 108.96	3 670	724.63		R163	-40 331.53	3 667	177.11	
L164	-40 171.55	3 669	162.75		R164	-40 354.44	3 667	101.57	
L165	-40 183.68	3 668	864.44		R165	-40 408.01	3 666	957.46	
L166	-40 182.40	3 668	862.59		R166	-40 444.10	3 666	877.69	
L167	-40 163.43	3 668	854.66		R167	-40 483.90	3 666	799.97	
L168	-40 162.59	3 668	828.31		R168	-40 516.05	3 666	742.76	
L169	-40 185.03	3 668	829.69		R169	-40 555.77	3 666	677.27	
L170	-40 237.37	3 667	548.97		R170	-41 272.83	3 665	643.52	
L171	-40 242.66	3 667	483.36		R171	-42 337.50	3 664	110.47	
L172	-40 263.94	3 667	331.68		R172	-43 161.31	3 662	924.23	
L173	-40 270.27	3 667	299.50		R173	-43 180.84	3 662	918.49	
L174	-40 292.07	3 667	203.14		R174	-43 179.76	3 662	910.03	
L175	-40 322.90	3 667	097.14		R175	-43 173.50	3 662	906.46	
L176	-40 344.29	3 667	034.15		R176	-43 412.64	3 662	561.90	
L177	-40 376.20	3 666	952.71		R177	-43 550.66	3 662	364.48	
L178	-40 416.30	3 666	863.09		R178	-43 576.10	3 662	332.45	
L179	-40 456.20	3 666	785.38		R179	-43 625.02	3 662	279.72	
L180	-40 510.51	3 666	690.47		R180	-43 675.62	3 662	233.24	
L181	-40 563.59	3 666	609.98		R181	-43 719.14	3 662	198.60	
L182	-42 362.84	3 664	019.13		R182	-43 733.91	3 662	187.57	
L183	-42 751.17	3 663	461.43		R183	-43 778.82	3 662	158.28	
L184	-43 117.36	3 662	934.12		R184	-43 825.39	3 662	131.22	
L185	-43 109.92	3 662	934.69		R185	-43 859.48	3 662	114.21	
L186	-43 108.46	3 662	911.57		R186	-43 909.16	3 662	092.83	
L187	-43 133.43	3 662	909.65		R187	-43 942.93	3 662	080.30	
L188	-43 381.53	3 662	552.47		R188	-43 994.32	3 662	064.58	
L189	-43 372.40	3 662	539.42		R189	-44 038.08	3 662	053.77	
L190	-43 380.11	3 662	518.48		R190	-44 073.32	3 662	046.89	
L191	-43 392.93	3 662	536.61		R191	-44 108.82	3 662	041.42	
L192	-43 518.96	3 662	355.05		R192	-44 162.53	3 662	036.22	
L193	-43 541.17	3 662	327.36		R193	-44 754.02	3 662	006.12	
L194	-43 588.54	3 662	273.90		R194	-45 161.33	3 661	983.88	
L195	-43 600.92	3 662	261.10		R195	-45 166.74	3 661	993.26	
L196	-43 639.79	3 662	224.13		R196	-45 171.14	3 661	992.99	
L197	-43 670.39	3 662	198.32		R197	-45 173.99	3 661	982.51	
L198	-43 713.54	3 662	165.42		R198	-45 312.32	3 661	963.91	
L199	-43 758.15	3 662	134.87		R199	-45 958.80	3 661	741.47	
L200	-43 789.15	3 662	116.78		R200	-45 992.56	3 661	696.81	
L201	-43 837.15	3 662	090.80		R201	-45 993.81	3 661	695.45	
L202	-43 886.42	3 662	069.38		R202	-46 039.88	3 661	645.40	
L203	-43 953.83	3 662	044.27		R203	-46 047.29	3 661	637.35	
L204	-43 989.92	3 662	034.12		R204	-46 101.19	3 661	608.59	
Vel Sheet					32	Van of		36	P1210/20

PADRESERVE KOÖRDINATE / ROAD RESERVE CO-ORDINATES									
LINKERKANT/LEFT HAND SIDE					REGTERKANT/RIGHT HAND SIDE				
	Y		X	WG 23°		Y		X	
L205	-44 041.40	3	662 022.23		R205	-46 085.73	3	661 565.79	
L206	-44 094.17	3	662 013.25		R206	-46 096.73	3	661 487.56	
L207	-44 165.44	3	662 005.13		R207	-46 095.72	3	661 444.53	
L208	-45 126.97	3	661 955.63		R208	-46 091.01	3	661 390.44	
L209	-45 144.82	3	661 954.42		R209	-46 025.76	3	661 172.53	
L210	-45 210.57	3	661 946.39		R210	-46 017.54	3	661 103.69	
L211	-45 245.66	3	661 940.07		R211	-46 032.28	3	660 986.13	
L212	-45 299.99	3	661 928.48		R212	-46 027.43	3	660 931.62	
L213	-45 303.55	3	661 920.90		R213	-46 005.04	3	660 856.98	
L214	-45 313.89	3	661 924.50		R214	-46 003.78	3	660 852.32	
L215	-45 449.37	3	661 884.79		R215	-45 990.58	3	660 803.81	
L216	-45 499.13	3	661 868.27		R216	-45 983.47	3	660 750.33	
L217	-45 861.78	3	661 742.95		R217	-45 986.44	3	660 699.98	
L218	-45 864.77	3	661 742.01		R218	-45 998.48	3	660 659.74	
L219	-45 882.22	3	661 735.04		R219	-46 008.96	3	660 634.22	
L220	-45 904.24	3	661 725.17		R220	-46 043.82	3	660 564.85	
L221	-45 913.50	3	661 719.63		R221	-46 084.28	3	660 502.89	
L222	-45 935.59	3	661 706.43		R222	-46 146.18	3	660 441.49	
L223	-45 981.49	3	661 678.99		R223	-46 299.51	3	660 334.26	
L224	-45 993.36	3	661 651.07		R224	-46 550.78	3	660 158.98	
L225	-45 996.04	3	661 644.76		R225	-46 800.90	3	659 983.92	
L226	-46 016.58	3	661 623.20		R226	-47 295.58	3	659 636.87	
L227	-46 018.47	3	661 621.22		R227	-47 553.78	3	659 454.52	
L228	-46 024.67	3	661 613.84		R228	-47 689.69	3	659 354.43	
L229	-46 050.01	3	661 564.53		R229	-47 806.08	3	659 264.04	
L230	-46 051.29	3	661 561.50		R230	-47 939.16	3	659 156.21	
L231	-46 056.42	3	661 470.89		R231	-48 226.58	3	658 903.75	
L232	-46 055.11	3	661 463.59		R232	-48 358.06	3	658 779.20	
L233	-46 046.05	3	661 413.05		R233	-48 470.19	3	658 667.75	
L234	-46 030.05	3	661 361.03		R234	-48 581.50	3	658 552.98	
L235	-46 019.68	3	661 301.01		R235	-48 748.57	3	658 370.35	
L236	-45 998.95	3	661 251.18		R236	-48 961.93	3	658 119.02	
L237	-45 990.50	3	661 221.74		R237	-49 130.47	3	657 901.70	
L238	-45 987.67	3	661 211.90		R238	-49 285.46	3	657 683.59	
L239	-45 969.48	3	661 165.70		R239	-49 395.21	3	657 518.54	
L240	-45 966.57	3	661 131.87		R240	-49 519.93	3	657 319.38	
L241	-45 976.21	3	661 050.03		R241	-49 653.85	3	657 091.82	
L242	-45 988.04	3	660 990.01		R242	-49 820.05	3	656 803.97	
L243	-45 973.49	3	660 902.71		R243	-50 369.32	3	655 862.89	
L244	-45 956.37	3	660 855.79		R244	-50 689.39	3	655 313.36	
L245	-45 955.55	3	660 850.29		R245	-50 995.80	3	654 787.28	
L246	-45 945.49	3	660 783.47		R246	-52 050.00	3	652 984.01	
L247	-45 940.14	3	660 674.84		R247	-52 438.02	3	652 318.90	
L248	-45 943.25	3	660 659.82		R248	-52 496.29	3	652 219.03	
L249	-45 952.95	3	660 638.05		R249	-52 497.06	3	652 219.44	
L250	-46 034.18	3	660 507.65		R250	-52 522.71	3	652 175.27	
L251	-46 075.93	3	660 462.09		R251	-52 549.21	3	652 180.12	
L252	-46 134.68	3	660 413.65		R252	-52 550.00	3	652 160.19	
L253	-46 286.97	3	660 304.05		R253	-52 532.68	3	652 156.78	
L254	-46 533.66	3	660 132.63		R254	-54 906.81	3	648 091.08	
L255	-47 279.63	3	659 610.42		R255	-55 260.16	3	647 485.93	
					Vel Sheet	33	Van of	36	P1210/20



PADRESERWE KOÖRDINATE / ROAD RESERVE CO-ORDINATES									
LINKERKANT/LEFT HAND SIDE					REGTERKANT/RIGHT HAND SIDE				
	Y		X	WG 23°		Y		X	
L256	-47 501.78	3	659	453.26	R256	-55 800.96	3	646	559.34
L257	-47 632.90	3	659	357.94	R257	-56 219.99	3	645	841.62
L258	-47 751.04	3	659	267.58	R258	-56 581.26	3	645	222.83
L259	-47 869.23	3	659	174.13	R259	-56 860.84	3	644	743.96
L260	-47 978.23	3	659	082.84	R260	-57 091.87	3	644	348.23
L261	-48 096.74	3	658	979.81	R261	-57 316.31	3	643	963.78
L262	-48 318.90	3	658	774.51	R262	-57 552.18	3	643	558.12
L263	-48 419.12	3	658	675.54	R263	-57 836.75	3	643	068.27
L264	-48 526.34	3	658	566.21	R264	-57 842.39	3	643	069.37
L265	-48 711.52	3	658	368.12	R265	-58 272.83	3	642	326.57
L266	-48 811.23	3	658	253.83	R266	-58 703.51	3	641	583.35
L267	-48 929.52	3	658	110.94	R267	-59 852.38	3	639	603.53
L268	-49 101.27	3	657	888.69	R268	-60 100.34	3	639	177.17
L269	-49 249.22	3	657	680.91	R269	-60 151.70	3	639	099.53
L270	-49 350.83	3	657	530.79	R270	-60 183.36	3	639	055.53
L271	-49 494.03	3	657	302.93	R271	-60 366.36	3	638	816.72
L272	-49 627.67	3	657	075.33	R272	-60 427.82	3	638	736.51
L273	-50 657.91	3	655	304.52	R273	-60 718.45	3	638	357.26
L274	-52 214.82	3	652	639.21	R274	-61 294.73	3	637	605.23
L275	-52 411.73	3	652	302.07	R275	-61 430.75	3	637	427.96
L276	-54 876.48	3	648	081.13	R276	-62 338.85	3	636	244.51
L277	-55 229.78	3	647	475.97	R277	-63 609.42	3	634	588.67
L278	-55 773.15	3	646	544.59	R278	-63 623.23	3	634	590.67
L279	-56 191.07	3	645	829.14	R279	-63 623.63	3	634	590.52
L280	-56 551.71	3	645	211.11	R280	-63 642.77	3	634	583.27
L281	-56 628.56	3	645	079.19	R281	-63 640.24	3	634	548.65
L282	-56 615.79	3	645	061.15	R282	-64 225.25	3	633	786.43
L283	-56 617.56	3	645	057.13	R283	-65 384.39	3	632	276.18
L284	-56 638.76	3	645	061.58	R284	-66 435.43	3	630	906.67
L285	-56 832.13	3	644	730.37	R285	-68 511.34	3	628	201.55
L286	-57 064.10	3	644	333.07	R286	-68 590.96	3	628	100.89
L287	-57 289.03	3	643	947.81	R287	-68 812.63	3	627	842.03
L288	-57 545.04	3	643	507.86	R288	-68 832.13	3	627	840.72
L289	-58 235.50	3	642	319.96	R289	-68 845.50	3	627	824.79
L290	-58 670.41	3	641	571.76	R290	-68 844.07	3	627	805.59
L291	-59 805.55	3	639	618.94	R291	-69 534.31	3	627	007.06
L292	-59 831.53	3	639	574.33	R292	-69 769.57	3	626	733.84
L293	-59 859.94	3	639	525.02	R293	-69 931.83	3	626	545.70
L294	-59 860.97	3	639	525.35	R294	-72 963.98	3	623	035.30
L295	-60 083.61	3	639	145.49	R295	-73 031.84	3	622	956.78
L296	-60 098.32	3	639	122.72	R296	-74 141.38	3	621	673.17
L297	-60 136.03	3	639	067.63	R297	-74 452.06	3	621	312.04
L298	-60 160.97	3	639	033.71	R298	-76 078.98	3	619	428.39
L299	-60 332.85	3	638	809.39	R299	-76 101.56	3	619	420.16
L300	-60 385.12	3	638	741.16	R300	-76 112.05	3	619	405.52
L301	-60 702.77	3	638	326.57	R301	-76 114.42	3	619	402.22
L302	-61 427.22	3	637	381.06	R302	-76 112.04	3	619	389.92
L303	-61 829.89	3	636	855.51	R303	-78 891.64	3	616	171.86
L304	-62 325.55	3	636	209.72	R304	-79 960.12	3	614	932.62
L305	-63 603.15	3	634	545.17	R305	-82 030.61	3	612	535.37
L306	-64 171.83	3	633	804.24	R306	-84 215.30	3	610	005.17
					<div> <div>Vel</div> <div>34</div> <div>Van</div> <div>36</div> <div>of</div> <div>P1210/20</div> </div>				
					Sheet				

This gazette is also available free online at [www.gpwonline.co.za](http://www.gpwonline.co.za)

PADRESERWE KOÖRDINATE / ROAD RESERVE CO-ORDINATES									
LINKERKANT/LEFT HAND SIDE					REGTERKANT/RIGHT HAND SIDE				
	Y		X	WG 25°		Y		X	
L355	92 412.73	3 598	688.55		R355	89 260.76	3 595	635.65	
L356	92 061.48	3 598	355.11		R356	89 243.96	3 595	555.32	
L357	91 629.82	3 597	946.30		R357	89 210.76	3 595	439.45	
L358	91 170.50	3 597	511.55		R358	89 207.17	3 595	426.90	
L359	90 760.49	3 597	121.83		R359	89 203.72	3 595	415.50	
L360	90 760.93	3 597	101.45		R360	89 197.02	3 595	335.54	
L361	90 857.88	3 597	023.14		R361	89 193.30	3 595	291.24	
L362	90 844.45	3 597	001.04		R362	89 180.00	3 595	132.46	
L363	90 751.66	3 597	083.75		R363	89 172.77	3 595	046.21	
L364	90 725.24	3 597	088.04		R364	89 162.22	3 594	923.11	
L365	90 554.66	3 596	926.08		R365	89 162.91	3 594	904.04	
L366	90 379.92	3 596	759.53		R366	89 107.17	3 594	644.73	
L367	90 344.56	3 596	725.90		R367	89 033.03	3 594	662.71	
L368	90 005.08	3 596	403.04		R368	89 029.76	3 594	649.46	
L369	89 669.46	3 596	084.54						
L370	89 461.49	3 595	892.59						
L371	89 346.92	3 595	750.72						
L372	89 321.94	3 595	705.28						
L373	89 271.17	3 595	532.05						
L374	89 267.47	3 595	456.79						
L375	89 262.30	3 595	395.66						
L376	89 241.45	3 595	149.14						
L377	89 232.82	3 595	047.18						
L378	89 238.74	3 594	608.93						
L379	89 235.60	3 594	593.84						