
GOVERNMENT NOTICES • GOEWERMENTSKENNISGEWINGS

DEPARTMENT OF TRANSPORT**NO. 6251****30 May 2025**

**THE SOUTH AFRICAN NATIONAL ROADS
AGENCY SOC LIMITED****Registration No: 1998/009584/30**

DECLARATION AMENDMENT OF NATIONAL ROAD N6 SECTION 3

AMENDMENT OF DECLARATION No. 464 OF 2019.

By virtue of section 40(1)(b) of the South African National Roads Agency Limited and the National Roads Act 1998 (Act No. 7 of 1998), I hereby amend Declaration No. 464 of 2019 by substituting sheets 2,8,9,11,20 and 23 with the accompanying sheets 2A,8A,9A,11A,20A and 23A of Plan No. P1078/18.

(National Road N6 Section 3: Cathcart - Queenstown)
MINISTER OF TRANSPORT

DEPARTEMENT VAN VERVOER

NO. 6251

30 Mei 2025

**DIE SUID-AFRIKAANSE NASIONALE
PADAGENTSKAP MSB BEPERK**

Registrasie No: 1998/009584/30

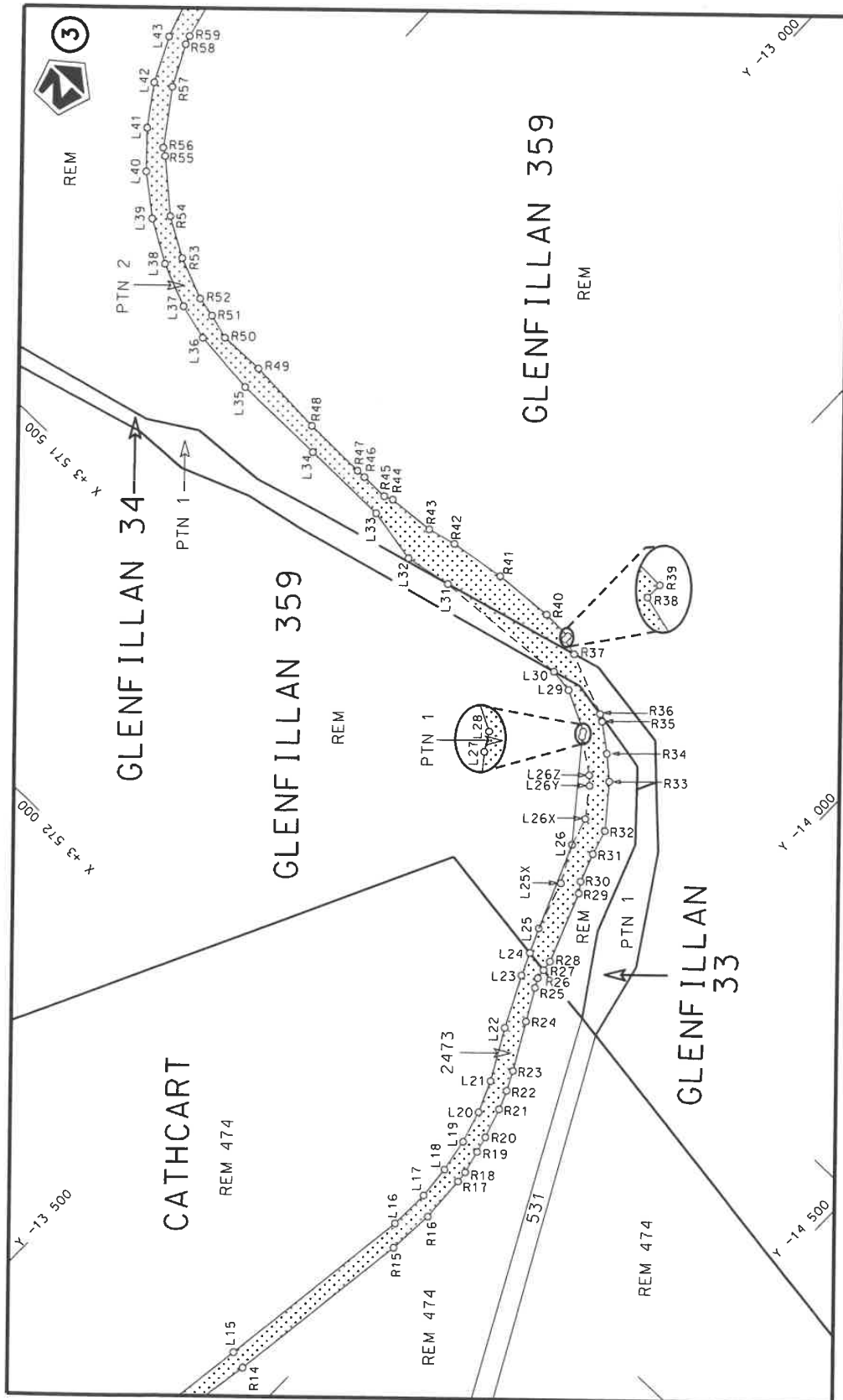
VERKLARING WYSIGING VAN NASIONALE PAD N6 SEKSIE 3


WYSIGING VAN VERKLARING No. 464 VAN 2019.

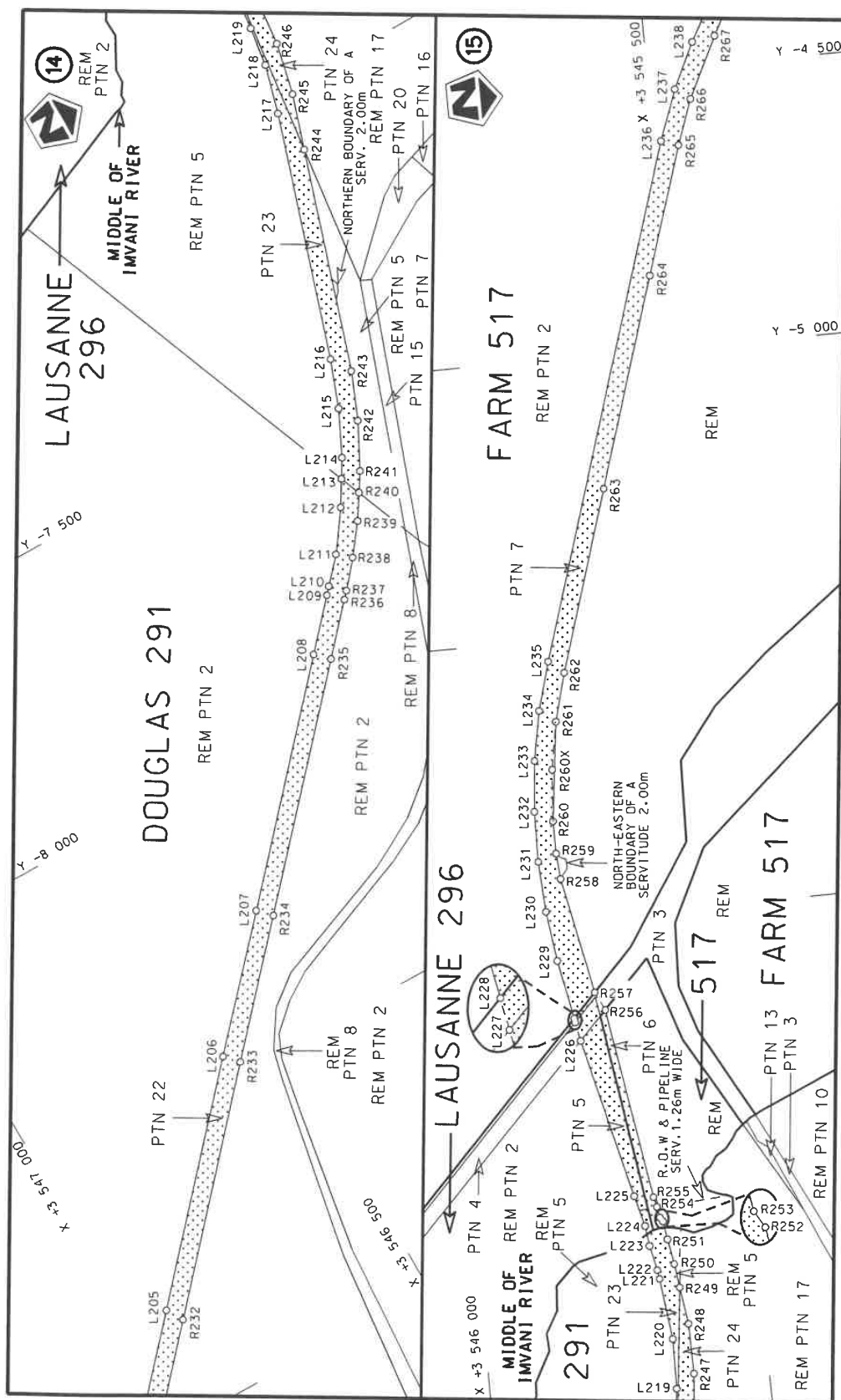
Kragtens Artikel 40(1)(b) van die Suid-Afrikaanse Nasionale Padagentskap Beperk en Nasionale Paaie Wet 1998 (Wet No. 7 van 1998), wysig ek hiermee Verklaring No. 464 van 2019 deur velle 2,8,9,11,20 en 23 te vervang met bygaande velle 2A,8A,9A,11A,20A en 23A van Plan No. P1078/18.


(National Road N6 Section 3: Cathcart - Queenstown)

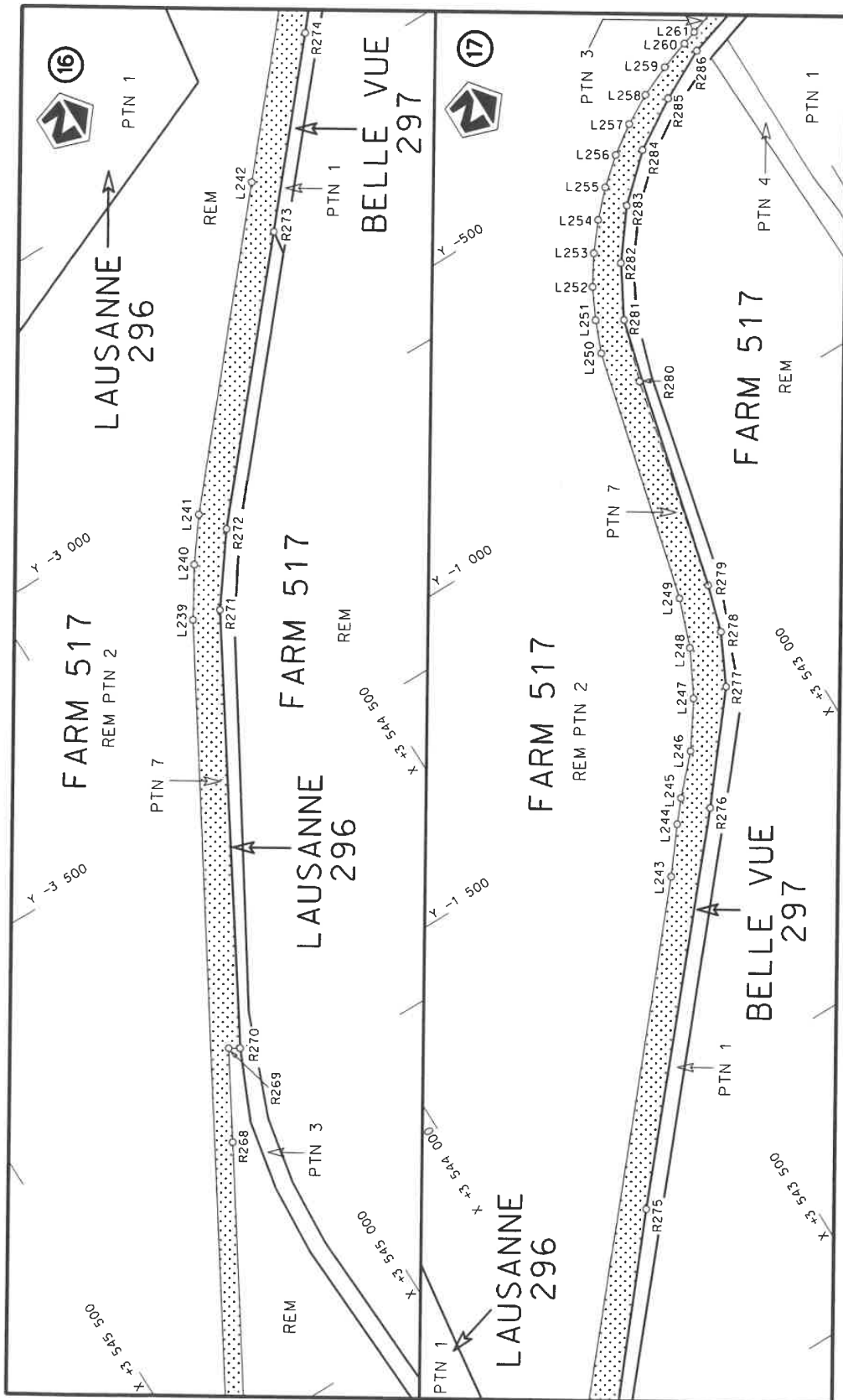

MINISTER VAN VERVOER




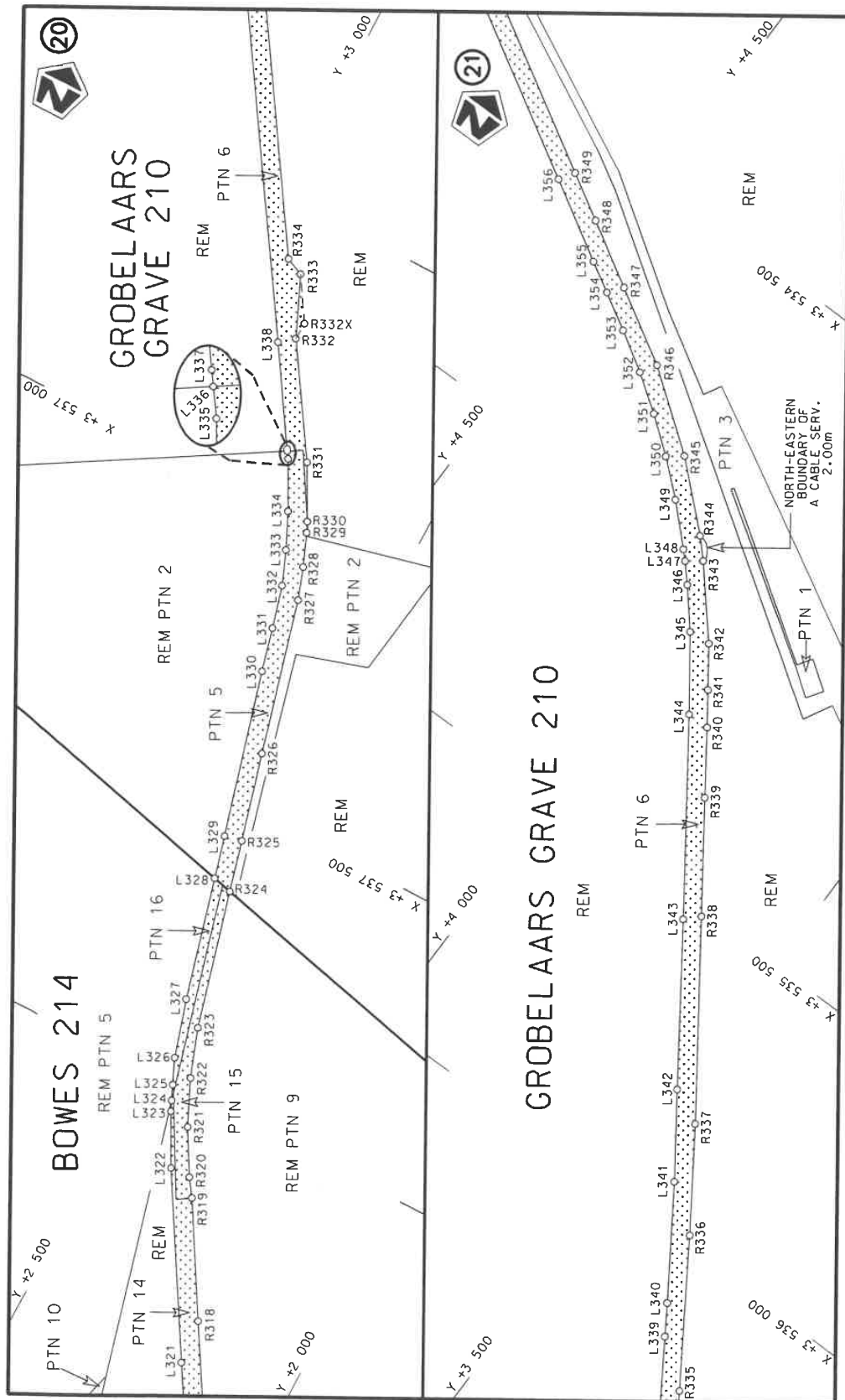
Die Suid Afrikaanse Nasionale Padagentskap MSB Bpk The South African National Roads Agency SOC Ltd	Die figuur getoon The figure shown	 steldie padreserwe voor van 'n gedeelte represents the road reserve of a portion van Nasionale Roete of National Route	Vel Sheet 2A of 23 Plan P1078/18
		3 N6 Sektie Section	



Die Suid Afrikaanse Nasionale Padagentskap MSB Bpk	Die figuur getoon		steldie padreserwe voor van 'n gedeelte represents the road reserve of a portion van Nasionale Roete N6 of National Route	Vel Sheet 8A of 23
The South African National Roads Agency SOC Ltd	The figure shown			



Die Suid Afrikaanse Nasionale Padogentskap MSB Bpk The South African National Roads Agency SOC Ltd	Die figuur getoon The figure shown		steldie padreserwe voor van 'n gedeelte represents the road reserve of a portion van Nasionale Roete N6 of National Route	
			3	Seksie Section
			Vel Sheet 9A of 23	Plan P1078/18



Die Suid Afrikaanse Nasionale Padagentskap MSB Bpk The South African National Roads Agency SOC Ltd	Die figuur getoon The figure shown		stelt die padreserwe voor van 'n gedeelte represents the road reserve of a portion van Nasionale Roete N6 of National Route	Vel Sheet	van 11A of	23
				Plan	P1078/18	3

PADRESERVE KOÖRDINATE / ROAD RESERVE CO-ORDINATES						
LINKERKANT/LEFT HAND SIDE				REGTERKANT/RIGHT HAND SIDE		
	Y	X	WG 27°		Y	X
L256	- 500.83	3 542	819.40	R256	-6 169.39	3 545 730.00
L257	- 466.45	3 542	770.16	R257	-6 136.58	3 545 746.01
L258	- 437.13	3 542	718.11	R258	-5 928.26	3 545 787.75
L259	- 413.11	3 542	663.10	R259	-5 881.99	3 545 791.58
L260	- 395.55	3 542	610.97	R260	-5 823.73	3 545 791.56
L261	- 387.42	3 542	585.42	R261	-5 646.80	3 545 769.52
L262	- 342.79	3 542	582.74	R262	-5 560.43	3 545 746.81
L263	- 287.26	3 542	575.56	R263	-5 238.82	3 545 645.65
L264	- 233.00	3 542	561.34	R264	-4 866.62	3 545 528.41
L265	- 194.50	3 542	544.57	R265	-4 638.78	3 545 456.51
L266	- 160.70	3 542	525.57	R266	-4 558.48	3 545 427.88
L267	- 127.93	3 542	499.53	R267	-4 449.86	3 545 374.46
L268	- 99.52	3 542	468.67	R268	-4 038.16	3 545 143.66
L269	- 77.57	3 542	432.83	R269	-3 891.38	3 545 061.37
L270	- 62.40	3 542	393.81	R270	-3 901.80	3 545 044.32
L271	- 57.51	3 542	352.07	R271	-3 215.48	3 544 663.78
L272	- 63.14	3 542	310.67	R272	-3 098.73	3 544 577.86
L273	- 79.57	3 542	271.75	R273	-2 690.35	3 544 228.61
L274	- 103.42	3 542	237.43	R274	-2 395.45	3 543 976.74
L275	- 231.23	3 542	085.70	R275	-2 134.40	3 543 759.83
L276	- 182.64	3 541	929.54	R276	-1 583.25	3 543 285.38
L277	- 133.52	3 541	848.67	R277	-1 413.65	3 543 147.53
L278	- 128.58	3 541	769.50	R278	-1 325.12	3 543 104.17
L279	- 127.72	3 541	753.75	R279	-1 242.06	3 543 079.96
L280	- 26.62	3 541	430.36	R280	- 867.45	3 542 994.50
L281	- 10.19	3 541	377.87	R281	- 759.42	3 542 960.63
L282	8.82	3 541	317.18	R282	- 669.91	3 542 912.17
L283	21.99	3 541	275.08	R283	- 588.00	3 542 849.48
L284	47.73	3 541	212.28	R284	- 518.26	3 542 773.92
L285	57.94	3 541	186.94	R285	- 463.70	3 542 687.03
L286	99.29	3 541	107.11	R286	- 418.27	3 542 598.90
L287	139.15	3 541	045.00	R287	- 176.55	3 541 806.43
L288	147.61	3 541	031.45	R288	- 38.77	3 541 368.86
L289	161.03	3 541	014.35	R289	19.02	3 541 184.49
L290	179.95	3 540	990.24	R290	24.28	3 541 183.27
L291	203.16	3 540	960.66	R291	53.72	3 541 086.01
L292	218.76	3 540	943.01	R292	69.53	3 541 091.96
L293	410.04	3 540	718.63	R293	122.71	3 541 012.22
L294	488.87	3 540	626.47	R294	155.81	3 540 969.56
L295	497.72	3 540	628.42	R295	174.69	3 540 945.22
L296	502.52	3 540	622.87	R296	178.45	3 540 940.37
L297	499.35	3 540	614.27	R297	193.81	3 540 922.23
L298	750.98	3 540	319.82	R298	204.57	3 540 909.84
L299	806.80	3 540	254.52	R299	386.32	3 540 697.31
L300	819.35	3 540	256.20	R300	725.83	3 540 299.72
L301	840.05	3 540	258.54	R301	779.70	3 540 236.48
L302	828.31	3 540	245.27	R302	811.68	3 540 199.15
L303	826.85	3 540	231.12	R303	843.13	3 540 162.41
L304	875.35	3 540	174.41	R304	1 081.10	3 539 884.38
L305	924.29	3 540	117.18	R305	1 331.53	3 539 586.50
L306	932.90	3 540	119.28	R306	1 536.91	3 539 349.76
				Vel Sheet	20A Van of	23 P1078/18

This gazette is also available free online at www.gpwonline.co.za

Printed by and obtainable from the Government Printer, Bosman Street, Private Bag X85, Pretoria, 0001
Contact Centre Tel: 012-748 6200. eMail: info.egazette@gpw.gov.za
Publications: Tel: (012) 748 6053, 748 6061, 748 6065