
GOVERNMENT NOTICES • GOEWERMENTSKENNISGEWINGS

DEPARTMENT OF TRANSPORT**NO. 6250****30 May 2025**

**THE SOUTH AFRICAN NATIONAL ROADS
AGENCY SOC LIMITED****Registration No: 1998/009584/30**

DECLARATION AMENDMENT OF NATIONAL ROAD N6 SECTION 2

AMENDMENT OF DECLARATION No. 515 OF 2018.

By virtue of section 40(1)(b) of the South African National Roads Agency Limited and the National Roads Act 1998 (Act No. 7 of 1998), I hereby amend Declaration No. 515 of 2018 by substituting sheets 5,6,15,16 and 20 with the accompanying sheets 5A,6A,15A,16A and 20A of Plan No. P953/17.

(National Road N6 Section 2: Stutterheim - Cathcart)**MINISTER OF TRANSPORT**

DEPARTEMENT VAN VERVOER

NO. 6250

30 Mei 2025

**DIE SUID-AFRIKAANSE NASIONALE
PADAGENTSKAP MSB BEPERK**

Registrasie No: 1998/009584/30

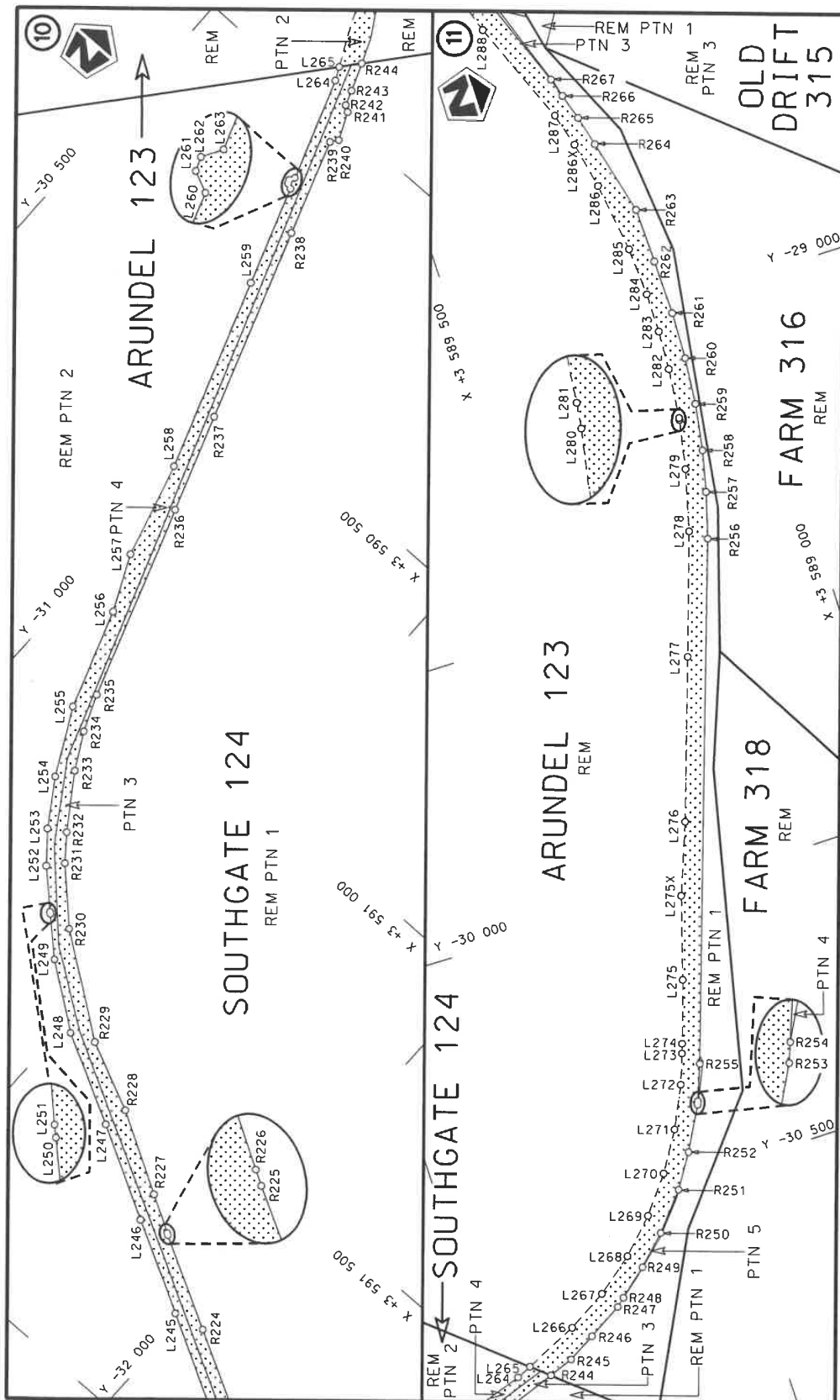
VERKLARING WYSIGING VAN NASIONALE PAD N6 SEKSIE 2


WYSIGING VAN VERKLARING No. 515 VAN 2018.

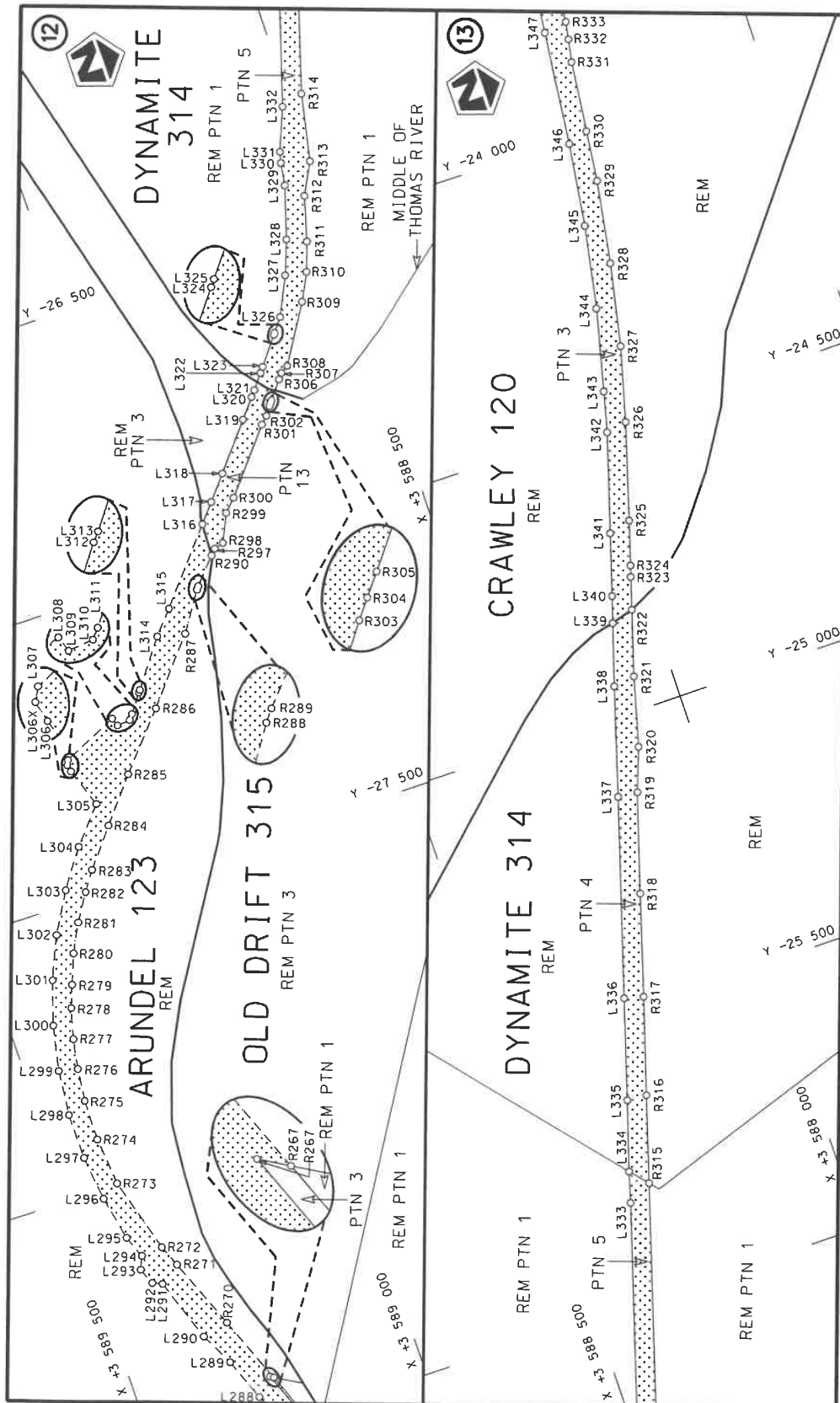
Kragtens Artikel 40(1)(b) van die Suid-Afrikaanse Nasionale Padagentskap Beperk en Nasionale Paaie Wet 1998 (Wet No. 7 van 1998), wysig ek hiermee Verklaring No. 515 van 2018 deur velle 5,6,15,16 en 20 te vervang met bygaande velle 5A,6A,15A,16A en 20A van Plan No. P953/17.

(Nasionale Pad N6 Seksie 2: Stutterheim - Cathcart)


MINISTER VAN VERVOER



Die Suid Afrikaanse Nasionale Padagentskap MSB Bpk The South African National Roads Agency SOC Ltd	Die figuur getoon The figure shown		steldie padreserwe voor van 'n gedeelte represents the road reserve of a portion van Nasionale Roete N6 of National Route	Vel Sheet 5A of 20	Plan P953/17
---	---------------------------------------	---	--	-----------------------	-----------------



Die Suid Afrikaanse Nasionale Padagentskap MSB Bpk The South African National Roads Agency SOC Ltd	Die figuur getoon The figure shown	<div data-bbox="1267 1084 1362 1218" data-label="Image"> </div>	steidie padreserwe voor van 'n gedeelte represents the road reserve of a portion van Nasionale Roete N6 of National Route	2 Seksie Section	Vel Sheet 6A of 20 Plan P953/17
---	---------------------------------------	---	--	------------------------	---

PADRESERVE KOÖRDINATE / ROAD RESERVE CO-ORDINATES									
LINKERKANT/LEFT HAND SIDE					REGTERKANT/RIGHT HAND SIDE				
	Y	X	WG 27°			Y	X		
L205	-35 205.47	3 593 401.13		R205	-33 946.79	3 593 265.37			
L206	-35 195.56	3 593 402.06		R206	-33 759.94	3 592 890.28			
L207	-35 073.97	3 593 415.22		R207	-33 731.34	3 592 845.82			
L208	-35 051.71	3 593 421.51		R208	-33 700.80	3 592 799.43			
L209	-34 983.63	3 593 440.77		R209	-33 666.39	3 592 755.52			
L210	-34 926.43	3 593 462.96		R210	-33 629.63	3 592 713.56			
L211	-34 855.43	3 593 500.68		R211	-33 580.63	3 592 664.04			
L212	-34 813.52	3 593 517.29		R212	-33 519.21	3 592 612.46			
L213	-34 794.17	3 593 524.96		R213	-33 515.98	3 592 610.36			
L214	-34 763.33	3 593 545.43		R214	-33 448.37	3 592 559.88			
L215	-34 742.20	3 593 559.46		R215	-33 233.40	3 592 432.73			
L216	-34 664.26	3 593 589.46		R216	-33 078.24	3 592 343.09			
L217	-34 623.79	3 593 598.08		R217	-32 988.24	3 592 298.44			
L218	-34 546.53	3 593 610.66		R218	-32 850.38	3 592 229.54			
L219	-34 465.74	3 593 614.86		R219	-32 662.11	3 592 126.00			
L220	-34 392.65	3 593 605.14		R220	-32 579.02	3 592 080.36			
L221	-34 356.74	3 593 597.54		R221	-32 504.58	3 592 039.47			
L222	-34 246.59	3 593 574.23		R222	-32 345.87	3 591 952.55			
L223	-34 107.03	3 593 501.50		R223	-32 190.62	3 591 867.81			
L224	-33 996.55	3 593 407.11		R224	-32 040.88	3 591 786.01			
L225	-33 916.68	3 593 299.21		R225	-31 882.93	3 591 700.23			
L226	-33 744.88	3 592 944.89		R226	-31 879.59	3 591 698.30			
L227	-33 742.74	3 592 941.65		R227	-31 816.58	3 591 661.38			
L228	-33 667.33	3 592 812.71		R228	-31 679.33	3 591 581.73			
L229	-33 519.39	3 592 653.91		R229	-31 559.11	3 591 525.14			
L230	-33 496.65	3 592 655.08		R230	-31 391.80	3 591 402.80			
L231	-33 491.94	3 592 650.43		R231	-31 308.83	3 591 320.13			
L232	-33 486.97	3 592 629.63		R232	-31 274.85	3 591 276.22			
L233	-33 325.13	3 592 533.72		R233	-31 213.61	3 591 184.06			
L234	-33 169.75	3 592 442.09		R234	-31 178.94	3 591 121.27			
L235	-33 072.23	3 592 396.97		R235	-31 153.29	3 591 056.91			
L236	-33 001.27	3 592 357.82		R236	-31 039.83	3 590 717.92			
L237	-32 932.95	3 592 313.88		R237	-30 982.35	3 590 547.55			
L238	-32 732.16	3 592 204.58		R238	-30 869.36	3 590 211.07			
L239	-32 612.09	3 592 217.26		R239	-30 813.80	3 590 044.48			
L240	-32 556.87	3 592 108.21		R240	-30 823.73	3 590 031.69			
L241	-32 555.41	3 592 107.43		R241	-30 802.63	3 589 983.73			
L242	-32 464.82	3 592 058.22		R242	-30 791.82	3 589 976.96			
L243	-32 297.98	3 591 967.22		R243	-30 782.48	3 589 950.81			
L244	-32 142.14	3 591 882.38		R244	-30 764.24	3 589 902.47			
L245	-31 985.28	3 591 796.70		R245	-30 747.80	3 589 859.68			
L246	-31 828.77	3 591 711.34		R246	-30 719.45	3 589 811.85			
L247	-31 669.99	3 591 623.00		R247	-30 683.24	3 589 752.40			
L248	-31 516.02	3 591 541.14		R248	-30 670.58	3 589 737.61			
L249	-31 408.45	3 591 461.38		R249	-30 628.81	3 589 688.83			
L250	-31 348.97	3 591 405.36		R250	-30 580.13	3 589 639.36			
L251	-31 346.11	3 591 402.74		R251	-30 516.32	3 589 585.62			
L252	-31 287.25	3 591 345.39		R252	-30 457.53	3 589 548.28			
L253	-31 244.99	3 591 293.80		R253	-30 381.74	3 589 507.38			
L254	-31 194.31	3 591 214.99		R254	-30 375.88	3 589 505.18			
L255	-31 135.45	3 591 100.32		R255	-30 313.26	3 589 481.72			
					Vel Sheet	15A Van of	20	P953/17	

PADRESERWE KOÖRDINATE / ROAD RESERVE CO-ORDINATES					
LINKERKANT/LEFT HAND SIDE			REGTERKANT/RIGHT HAND SIDE		
	Y	X	WG 27°	Y	X
L256	-31 077.39	3 590 926.48		R256	-29 424.34 3 589 185.37
L257	-31 032.90	3 590 829.58		R257	-29 343.83 3 589 163.04
L258	-30 986.97	3 590 660.75		R258	-29 271.21 3 589 146.81
L259	-30 874.01	3 590 325.42		R259	-29 188.47 3 589 134.09
L260	-30 816.18	3 590 153.35		R260	-29 105.28 3 589 126.97
L261	-30 806.56	3 590 148.86		R261	-29 021.97 3 589 124.89
L262	-30 804.18	3 590 142.62		R262	-28 924.65 3 589 127.73
L263	-30 809.46	3 590 133.53		R263	-28 827.14 3 589 130.97
L264	-30 748.93	3 589 956.24		R264	-28 693.74 3 589 165.48
L265	-30 738.19	3 589 933.31		R265	-28 640.21 3 589 179.93
L266	-30 694.55	3 589 840.14		R266	-28 594.60 3 589 194.51
L267	-30 652.55	3 589 771.23		R267	-28 560.84 3 589 205.31
L268	-30 602.21	3 589 707.68		R268	-28 411.79 3 589 263.59
L269	-30 544.28	3 589 651.12		R269	-28 415.22 3 589 257.70
L270	-30 480.58	3 589 601.61		R270	-28 295.91 3 589 304.49
L271	-30 411.55	3 589 559.35		R271	-28 170.07 3 589 353.96
L272	-30 338.64	3 589 524.47		R272	-28 132.14 3 589 369.93
L273	-30 286.16	3 589 505.56		R273	-27 998.88 3 589 408.15
L274	-30 269.53	3 589 499.97		R274	-27 913.25 3 589 416.21
L275	-30 161.11	3 589 464.59		R275	-27 840.84 3 589 415.25
L276	-29 893.39	3 589 375.13		R276	-27 783.26 3 589 408.60
L277	-29 614.32	3 589 281.96		R277	-27 730.62 3 589 398.56
L278	-29 401.74	3 589 212.24		R278	-27 676.99 3 589 384.21
L279	-29 293.87	3 589 185.01		R279	-27 638.12 3 589 369.52
L280	-29 207.39	3 589 169.04		R280	-27 586.32 3 589 349.23
L281	-29 203.52	3 589 168.55		R281	-27 536.89 3 589 323.72
L282	-29 115.14	3 589 160.02		R282	-27 489.90 3 589 293.98
L283	-29 045.82	3 589 156.70		R283	-27 456.14 3 589 270.22
L284	-28 976.11	3 589 157.22		R284	-27 390.83 3 589 217.08
L285	-28 890.15	3 589 163.24		R285	-27 315.71 3 589 154.76
L286	-28 765.86	3 589 181.71		R286	-27 220.77 3 589 070.53
L287	-28 623.91	3 589 217.07		R287	-27 111.81 3 588 978.36
L288	-28 440.17	3 589 293.34		R288	-27 044.57 3 588 933.18
L289	-28 364.51	3 589 321.69		R289	-27 039.26 3 588 928.99
L290	-28 306.39	3 589 350.75		R290	-26 995.61 3 588 889.30
L291	-28 194.27	3 589 389.88		R297	-26 985.60 3 588 880.20
L292	-28 187.06	3 589 406.35		R298	-26 980.69 3 588 863.44
L293	-28 157.97	3 589 418.10		R299	-26 932.09 3 588 840.66
L294	-28 135.38	3 589 408.26		R300	-26 910.49 3 588 819.62
L295	-28 095.85	3 589 423.26		R301	-26 803.69 3 588 730.35
L296	-28 016.83	3 589 439.79		R302	-26 791.56 3 588 717.96
L297	-27 936.60	3 589 449.26		R303	-26 777.28 3 588 707.41
L298	-27 855.88	3 589 449.61		R304	-26 773.06 3 588 704.08
L299	-27 775.63	3 589 441.69		R305	-26 768.24 3 588 700.28
L300	-27 696.31	3 589 424.78		R306	-26 737.48 3 588 676.04
L301	-27 619.60	3 589 399.94			
L302	-27 545.53	3 589 367.20			
L303	-27 475.33	3 589 326.37			
L304	-27 409.53	3 589 279.41			
L305	-27 347.68	3 589 225.17			
L306	-27 278.76	3 589 249.04			
			<div> <div>Vel</div> <div>16A</div> <div>Van</div> <div>20</div> <div>Sheet</div> <div>of</div> <div>P953/17</div> </div>		

PADRESERVE KOÖRDINATE / ROAD RESERVE CO-ORDINATES									
LINKERKANT/LEFT HAND SIDE					REGTERKANT/RIGHT HAND SIDE				
	Y	X	WG 27°			Y	X		
L460	-16 246.42	3 580 140.18		R460	-14 926.15	3 577 382.70			
L461	-16 099.58	3 579 977.53		R461	-14 894.48	3 577 263.61			
L462	-16 003.95	3 579 862.06		R462	-14 902.37	3 577 256.59			
L463	-15 920.33	3 579 772.53		R463	-14 900.70	3 577 250.19			
L464	-15 894.90	3 579 745.30		R464	-14 890.31	3 577 247.91			
L465	-15 828.46	3 579 665.06		R465	-14 845.27	3 577 094.98			
L466	-15 759.99	3 579 582.38		R466	-14 783.73	3 576 954.09			
L467	-15 752.24	3 579 584.55		R467	-14 715.49	3 576 828.82			
L468	-15 747.49	3 579 579.65		R468	-14 635.44	3 576 710.59			
L469	-15 749.75	3 579 570.51		R469	-14 545.35	3 576 600.21			
L470	-15 545.23	3 579 335.26		R470	-14 444.17	3 576 499.70			
L471	-15 462.89	3 579 222.62		R471	-14 169.61	3 576 269.54			
L472	-15 391.34	3 579 102.35		R472	-13 894.52	3 576 038.91			
L473	-15 331.20	3 578 976.40		R473	-13 588.47	3 575 783.52			
L474	-15 283.11	3 578 844.99		R474	-13 566.54	3 575 764.53			
L475	-15 199.80	3 578 531.77		R475	-13 514.29	3 575 712.07			
L476	-15 190.67	3 578 529.11		R476	-13 506.43	3 575 702.92			
L477	-15 188.87	3 578 522.39		R477	-13 497.37	3 575 692.38			
L478	-15 195.61	3 578 516.57		R478	-13 474.14	3 575 665.35			
L479	-15 017.76	3 577 847.37		R479	-13 460.66	3 575 646.37			
L480	-14 995.54	3 577 839.33		R480	-13 404.74	3 575 554.29			
L481	-14 988.34	3 577 828.12		R481	-13 360.08	3 575 447.17			
L482	-15 005.60	3 577 801.75		R482	-13 351.95	3 575 413.65			
L483	-14 937.61	3 577 544.69		R483	-13 335.95	3 575 350.97			
L484	-14 928.49	3 577 542.52		R484	-13 328.61	3 575 307.48			
L485	-14 926.90	3 577 535.74		R485	-13 319.32	3 575 202.24			
L486	-14 933.60	3 577 530.01		LINKERKANT/LEFT HAND SIDE					
L487	-14 909.85	3 577 437.09		L511	-13 334.95	3 575 473.25			
L488	-14 890.56	3 577 395.01		L512	-13 311.98	3 575 386.10			
L489	-14 887.44	3 577 388.10		L513	-13 307.84	3 575 357.11			
L490	-14 864.95	3 577 270.40		L514	-13 291.65	3 575 287.17			
L491	-14 843.22	3 577 262.96		L515	-13 287.41	3 575 228.73			
L492	-14 841.61	3 577 250.10		L516	-13 285.27	3 575 199.27			
L493	-14 854.84	3 577 233.78		L275X	-30 017.19	3 589 421.86			
L494	-14 839.71	3 577 180.54		L286X	-28 683.51	3 589 199.32			
L495	-14 790.82	3 577 045.76		L306X	-27 265.87	3 589 252.11			
L496	-14 729.47	3 576 917.31							
L497	-14 655.73	3 576 794.94							
L498	-14 570.80	3 576 680.11							
L499	-14 475.47	3 576 573.99							
L500	-14 250.83	3 576 378.39							
L501	-14 242.81	3 576 381.64							
L502	-14 237.69	3 576 377.38							
L503	-14 239.43	3 576 368.74							
L504	-14 096.27	3 576 249.16							
L505	-13 803.40	3 576 003.75							
L506	-13 562.18	3 575 801.82							
L507	-13 461.74	3 575 703.49							
L508	-13 438.40	3 575 666.84							
L509	-13 395.26	3 575 599.11							
L510	-13 373.21	3 575 561.24							
Vel Sheet					20A	Van of	20	P953/17	