
GOVERNMENT NOTICES • GOEWERMENTSKENNISGEWINGS

DEPARTMENT OF TRANSPORT**NO. 6249****30 May 2025**

**THE SOUTH AFRICAN NATIONAL ROADS
AGENCY SOC LIMITED****Registration No: 1998/009584/30**

DECLARATION AMENDMENT OF NATIONAL ROAD N5 SECTION 2

AMENDMENT OF DECLARATION NO'S. 547 OF 2003 AND 318 OF 2018.

By virtue of section 40(1)(b) of The South African National Roads Agency Limited and National Roads Act, 1998 (Act No. 7 of 1998), I hereby amend **(I)** Declaration No. 547 of 2003 by substituting paragraph (II) of the Schedule, being the descriptive declaration of the route from Senekal up to Bethlehem, and **(II)** Declaration No. 318 of 2018 by substituting it in its entirety, with the accompanying sheets 1 to 27 of Plan No. P1126/19.

In the town of Senekal the N5 Section 2 enters the town from the west and follows the streets known as Boerbok Street, Voortrekker Street and Bester Street, at time of declaration.

(National Road N5 Section 2: Senekal – Bethlehem)



MINISTER OF TRANSPORT

DEPARTEMENT VAN VERVOER

NO. 6249

30 Mei 2025

**DIE SUID-AFRIKAANSE NASIONALE
PADAGENTSKAP MSB BEPERK**

Registrasie No: 1998/009584/30

VERKLARING WYSIGING VAN NASIONALE PAD N5 SEKSIE 2

WYSIGING VAN VERKLARING NO'S. 547 VAN 2003 EN 318 VAN 2018.

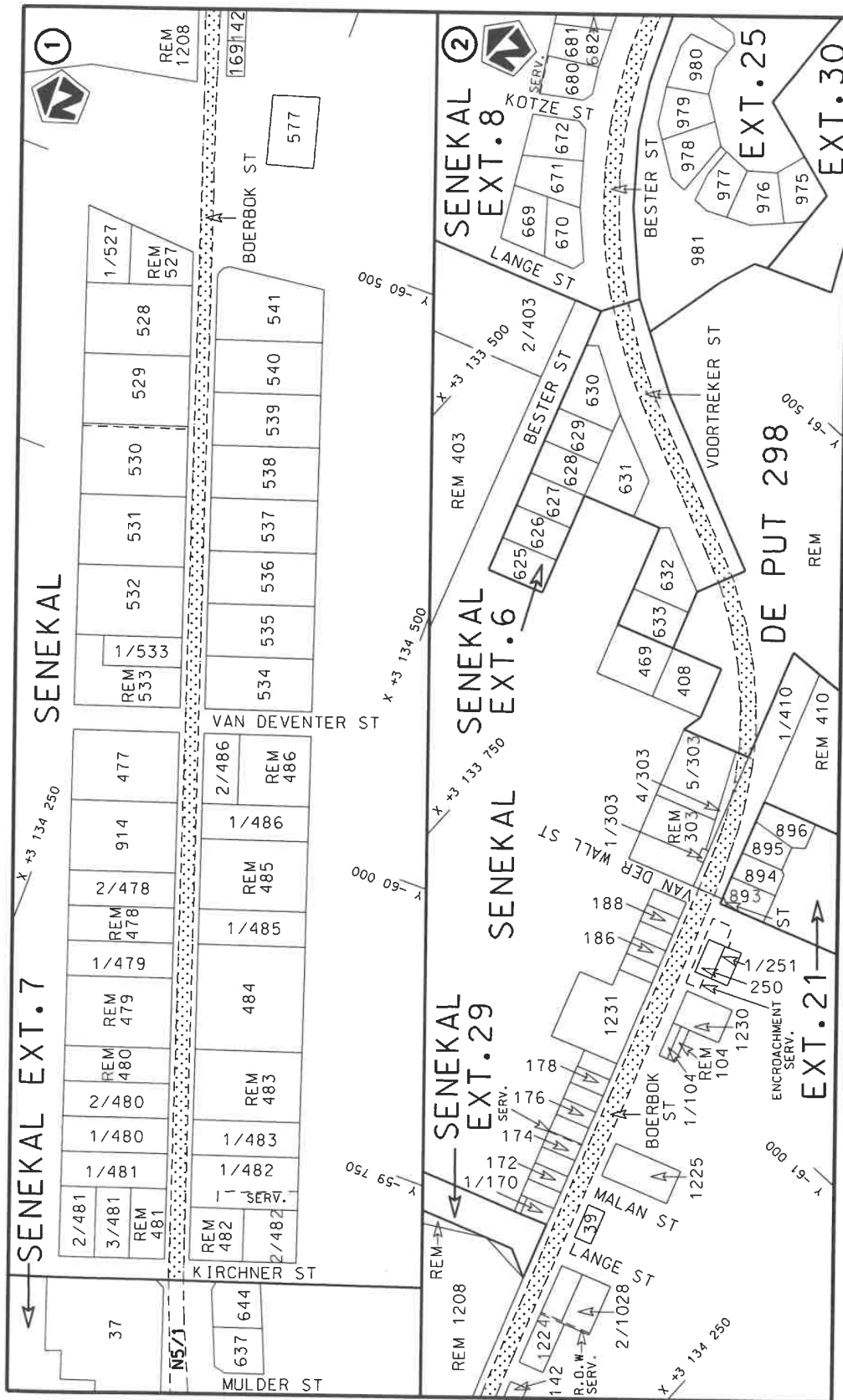
Kragtens Artikel 40(1)(b) van die Wet op die Suid-Afrikaanse Nasionale Padagentskap Beperk en op Nasionale Paaie, 1998 (Wet No.7 van 1998), wysig ek hiermee **(I)** Verklaring No. 547 van 2003 deur paragraaf (II) van die Skedule te vervang, synde die gedeelte van die beskrywende verklaring van die pad vanaf Senekal tot by Bethlehem, en **(II)** Verklaring No. 318 van 2018 deur dit in sy geheel te vervang, met meegaande velle 1 tot 27 van Plan No. P1126/19.

In die dorp Senekal kom die N5 Seksie 2 die dorp binne van uit die weste en volg dan die strate bekend as Boerbokstraat, Voortrekkerstraat en Besterstraat, tydens datum van verklaring.

(Nasionale Pad N5 Seksie 2: Senekal – Bethlehem)



MINISTER VAN VERVOER



stelt die padreserwe voor van 'n gedeelte
represents the road reserve of a portion
van Nasionale Roete N5
of National Route

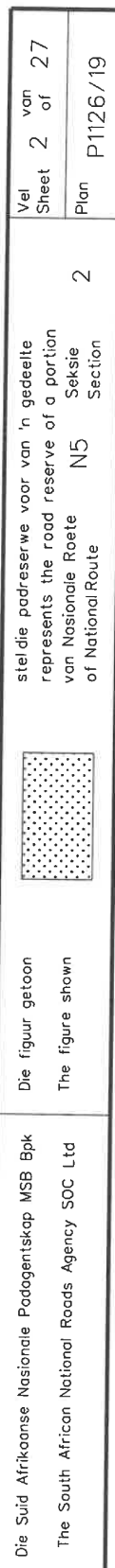


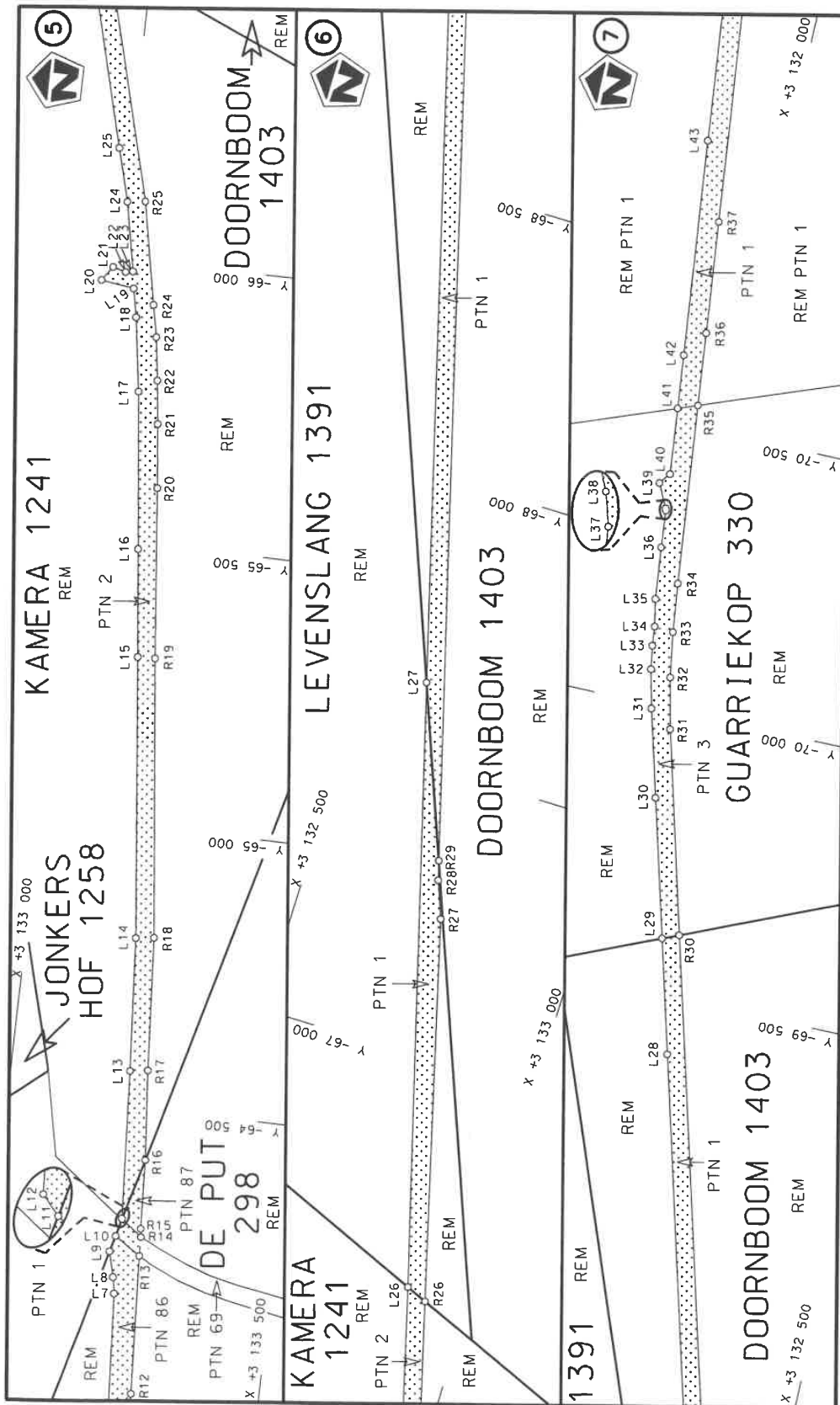
Die figuur getoon
The figure shown


Die Suid Afrikaanse Nasionale Padagentskap MSB Bpk
The South African National Roads Agency SOC Ltd

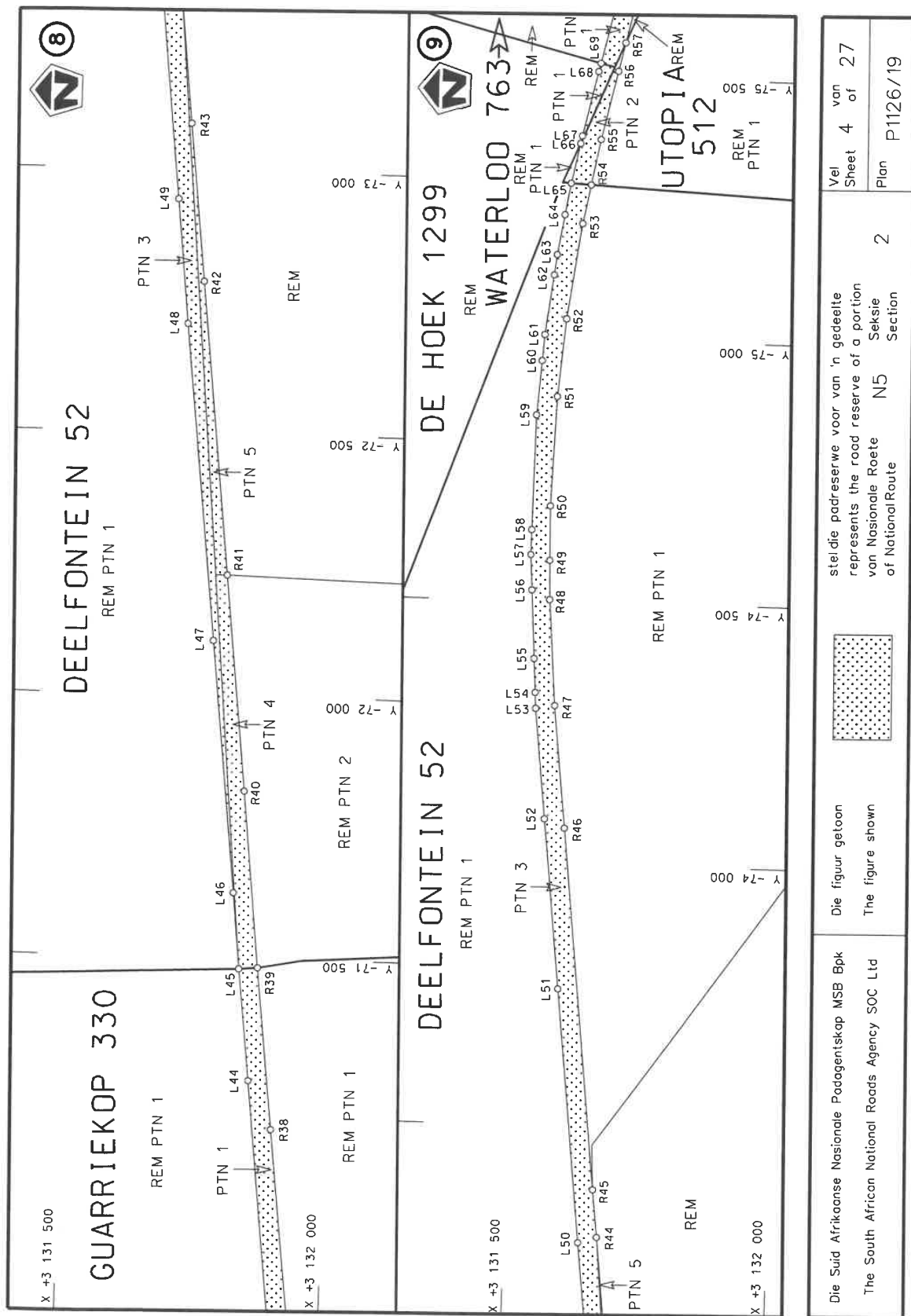
Vel
Sheet 1 of 27
Plan P1126/19

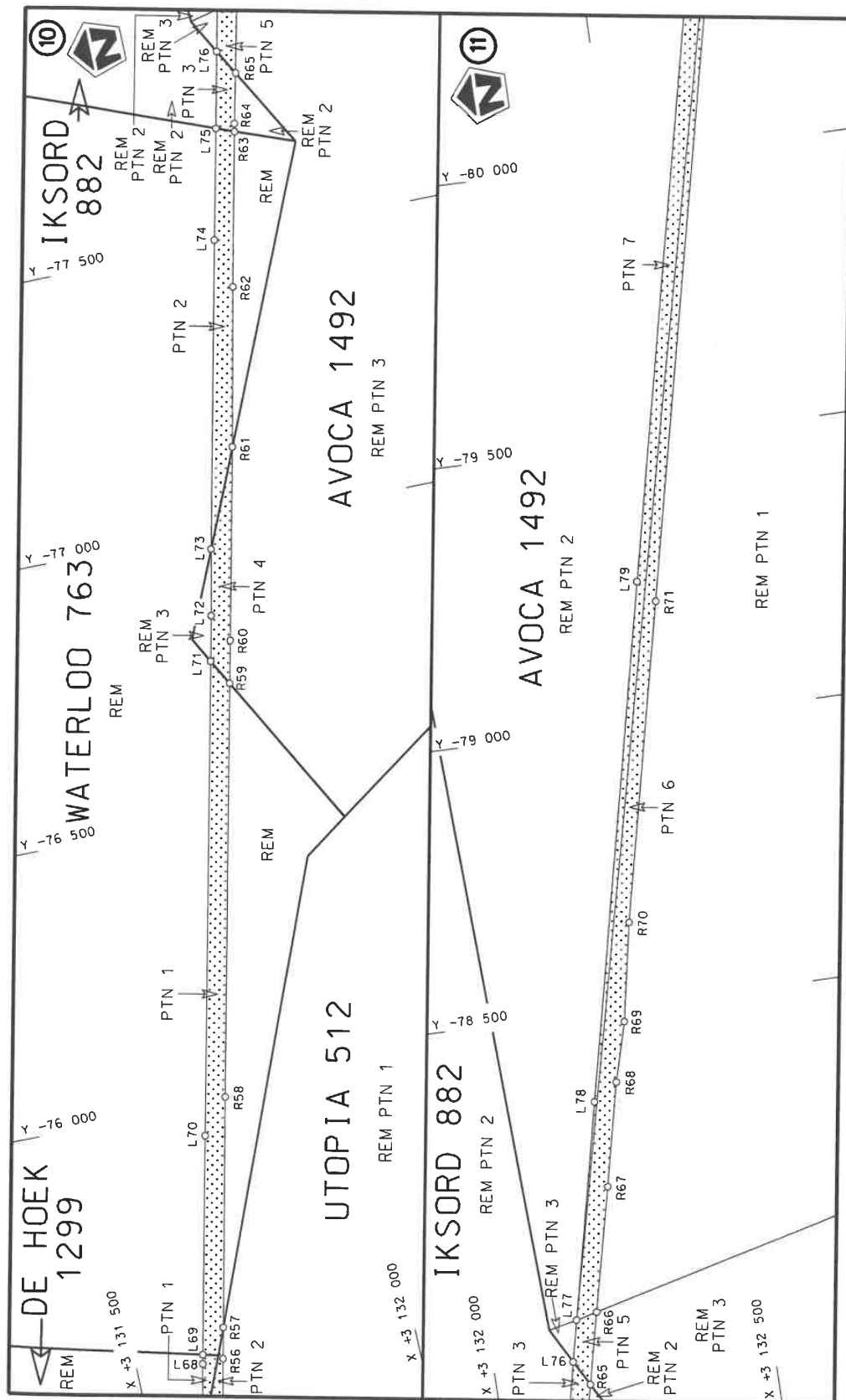
2
Seksie
Section



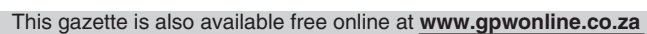


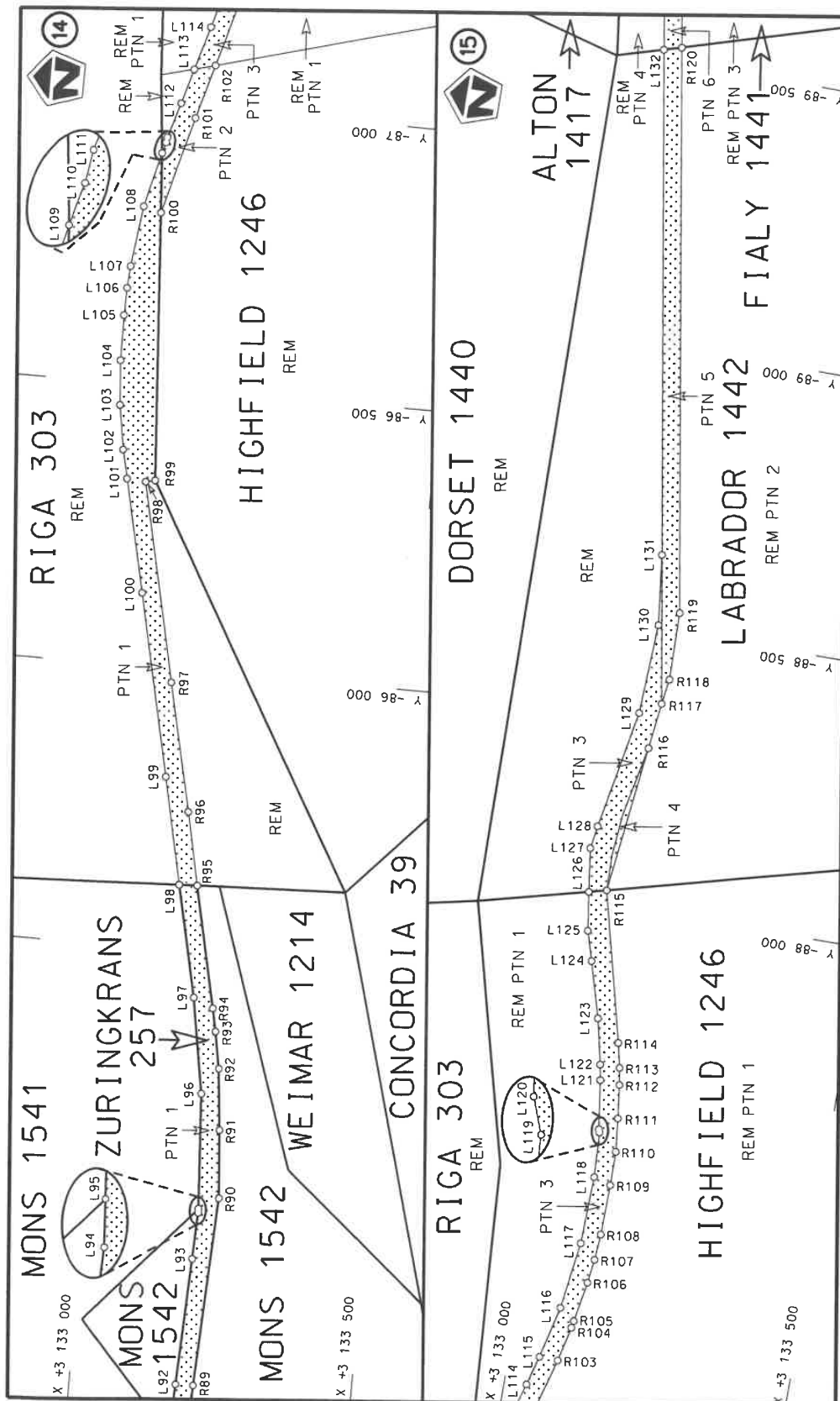
Die Suid Afrikaanse Nasionale Padagentskap MSB Bpk The South African National Roads Agency SOC Ltd	Die figuur getoon The figure shown		stel die padreserwe voor van 'n gedeelte represents the road reserve of a portion van Nasionale Roete N5 of National Route N5	Vel Sheet 3 of 27 Plan P1126/19
---	---------------------------------------	---	--	---------------------------------------




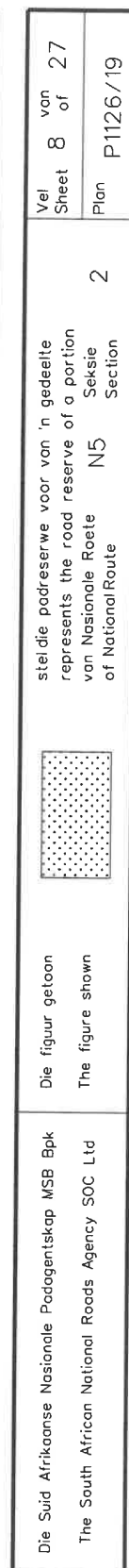


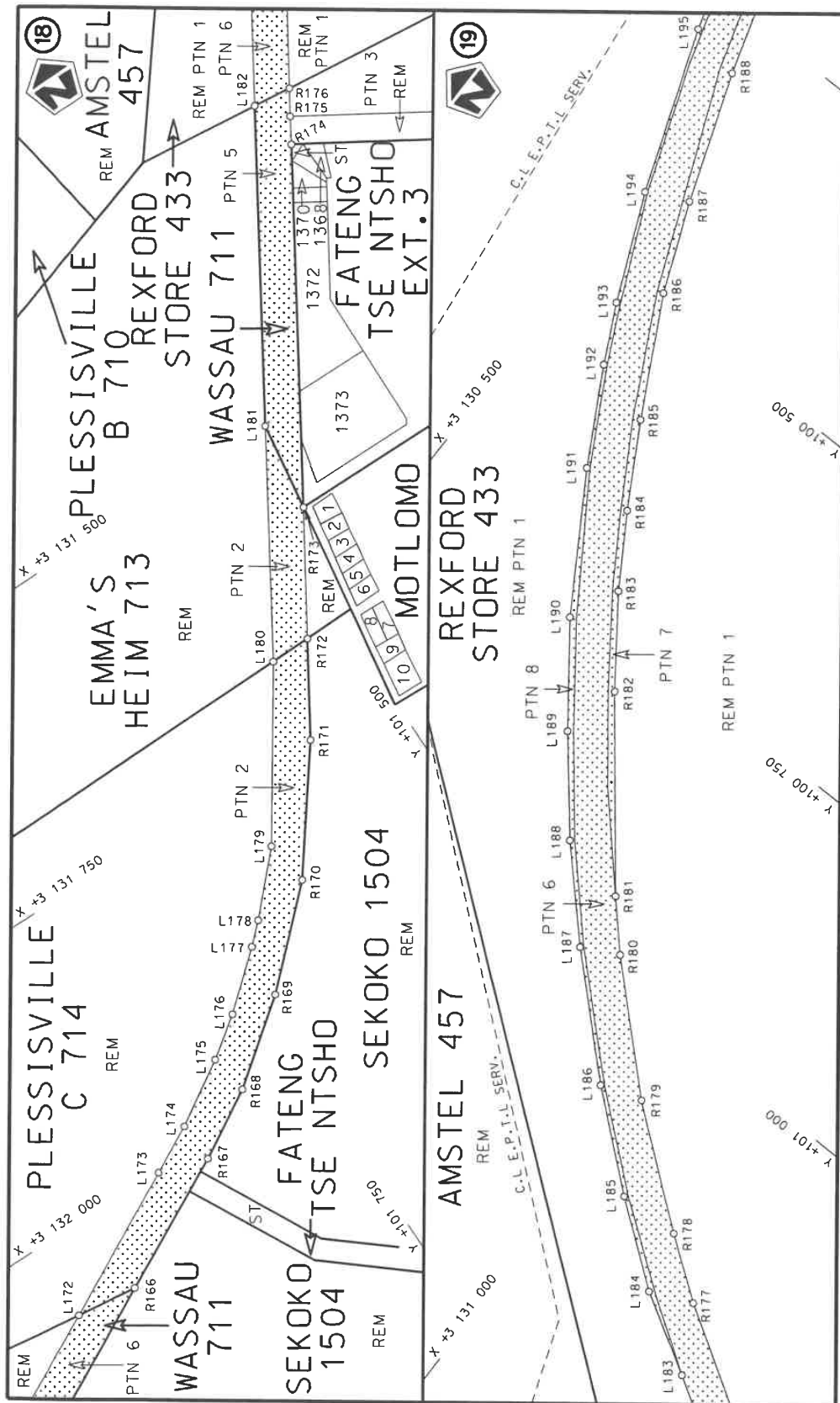
Die Suid Afrikaanse Nasionale Padagentskap MSB Bpk The South African National Roads Agency SOC Ltd	Die figuur getoon The figure shown	stel die padreserwe voor van 'n gedeelte represents the road reserve of a portion van Nasionale Roete N5 of National Route N5	2	Vel Sheet 5 of 27	Plan P1126/19
---	---------------------------------------	--	---	----------------------	------------------




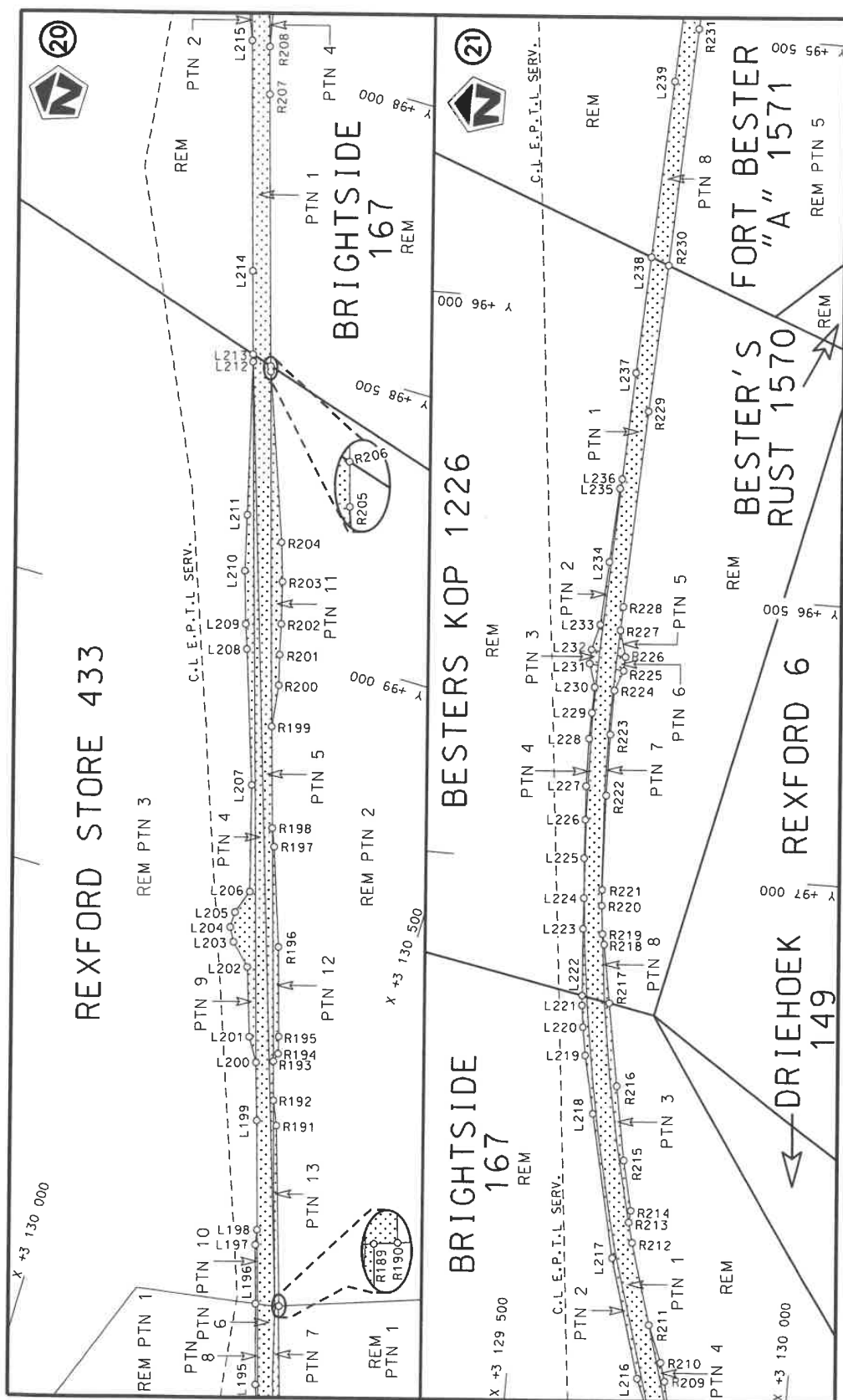


Die Suid Afrikaanse Nasionale Padogenitskap MSB Bpk	<p>Die figuur getoon</p>  <p>The figure shown</p>	<p>steldie padreserwe voor van 'n gedeelte represents the road reserve of a portion van Nasionale Roete N5 of National Route</p>	Vel Sheet	7 of	27
The South African National Roads Agency SOC Ltd			Plan	P1126/19	





Die Suid Afrikaanse Nasionale Padagentskap MSB Bpk The South African National Roads Agency SOC Ltd	Die figuur getoon The figure shown		steldie podreserwe voor van 'n gedeelte represents the road reserve of a portion van Nasionale Roete N5 of National Route N5	Vel Sheet 9 van of 27
		Seksie N5 Section	Plan P1126/19	



Die Suid Afrikaanse Nasionale Padagentskap MSB Bpk
The South African National Roads Agency SOC Ltd

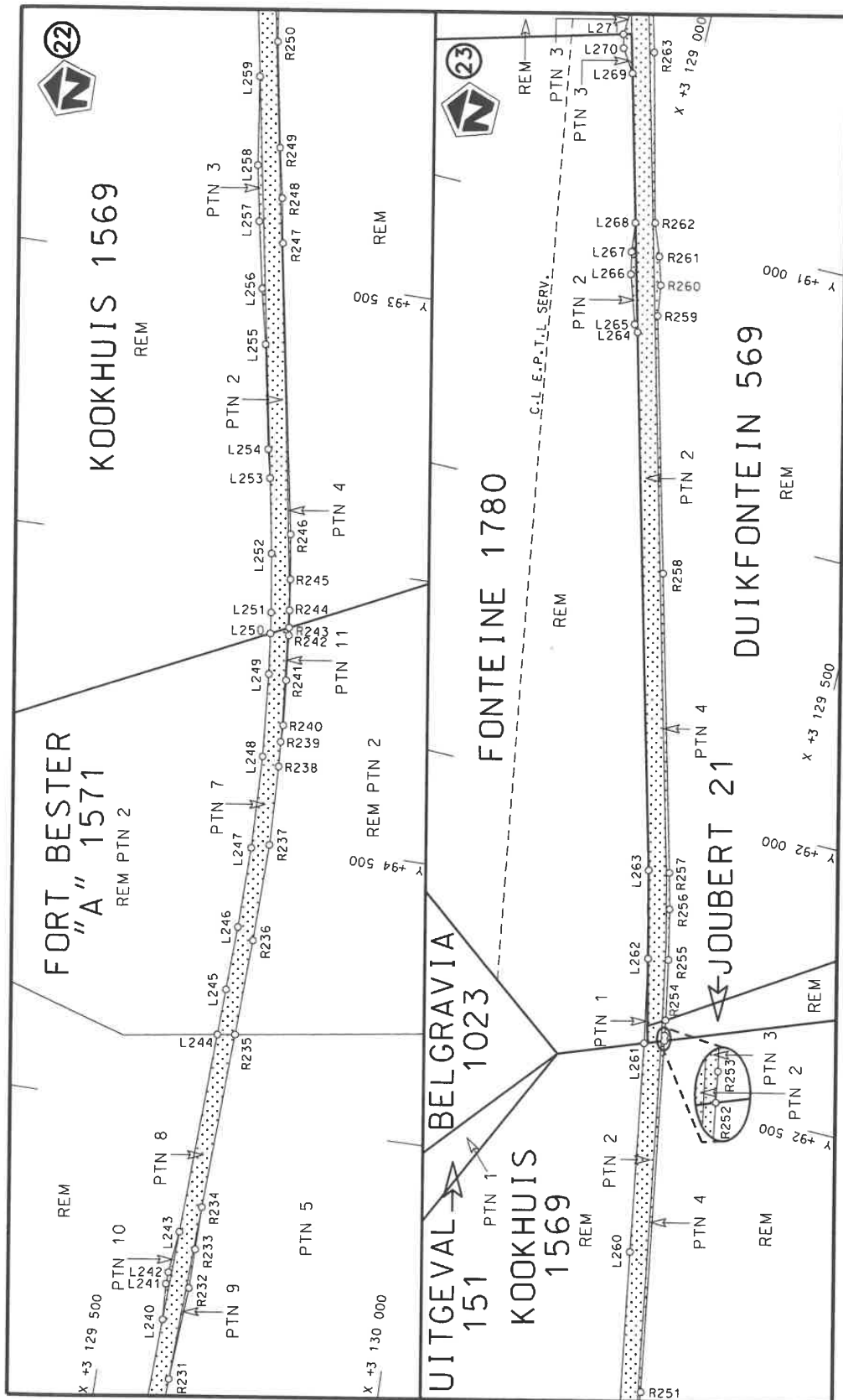
Die figuur getoon
The figure shown



stel die padreserwe voor van 'n gedeelte
represents the road reserve of a portion
van Nasionale Roete N5
of National Route

2

Vel
Sheet 10 of 27
Plan P1126/19



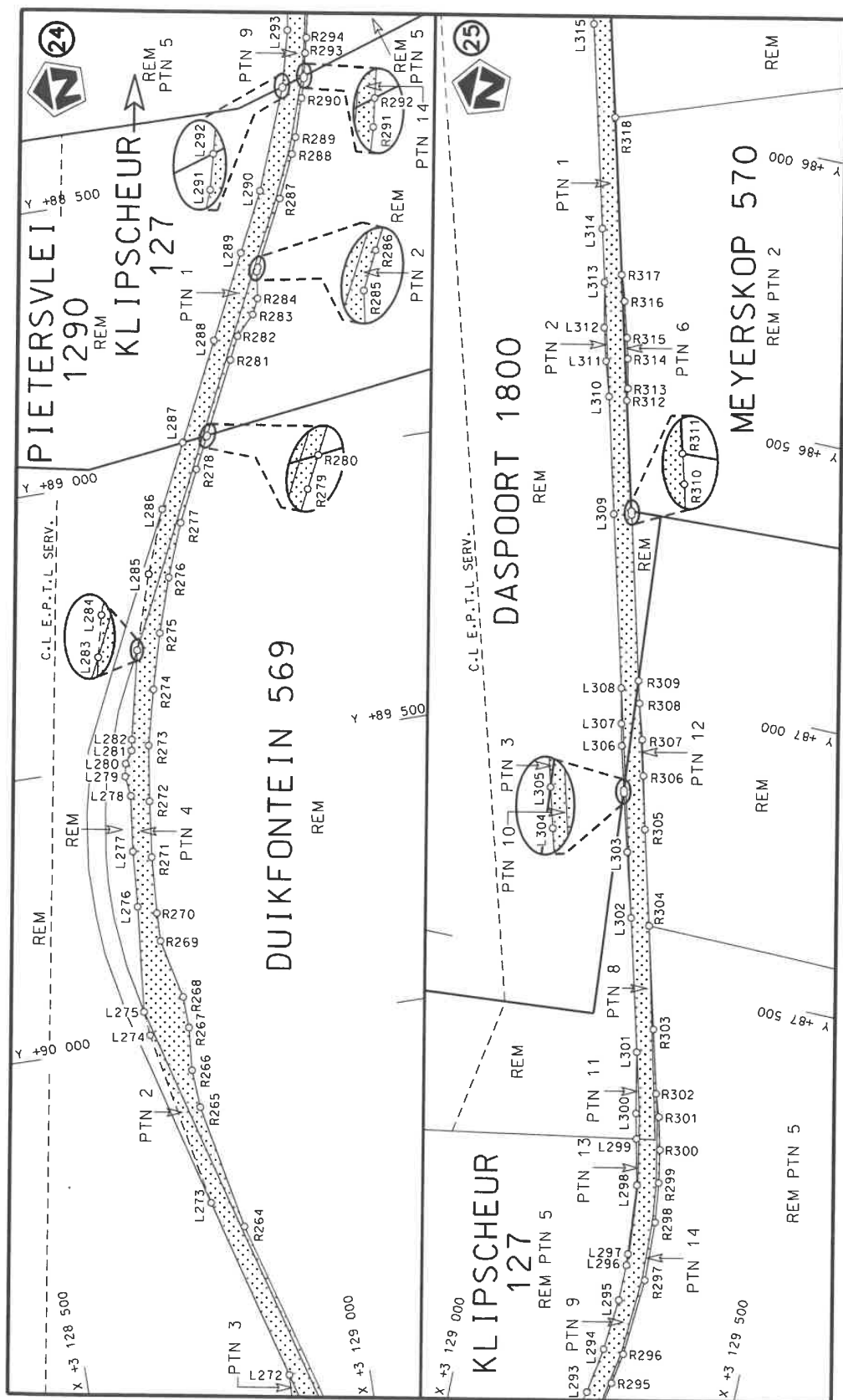
stel die padreserwe voor van 'n gedeelte
represents the road reserve of a portion
van Nasionale Roete N5 Sekse
of National Route Section 2



Die figuur getoon
The figure shown

Die Suid Afrikaanse Nasionale Padagentskap MSB Bpk
The South African National Roads Agency SOC Ltd

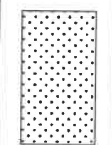
Vel
Sheet 11 of 27
Plan P1126/19



Vel
Sheet 12
of 27

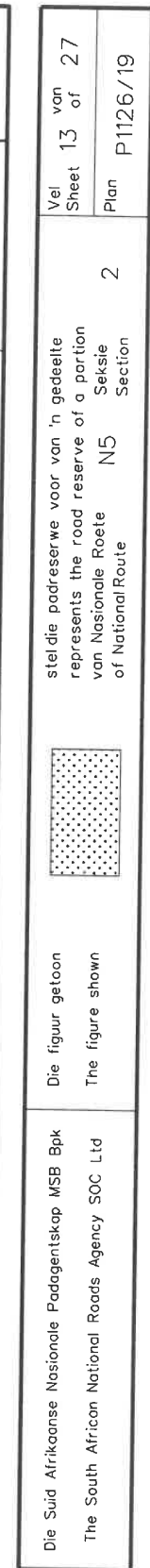
Plan
P1126/19

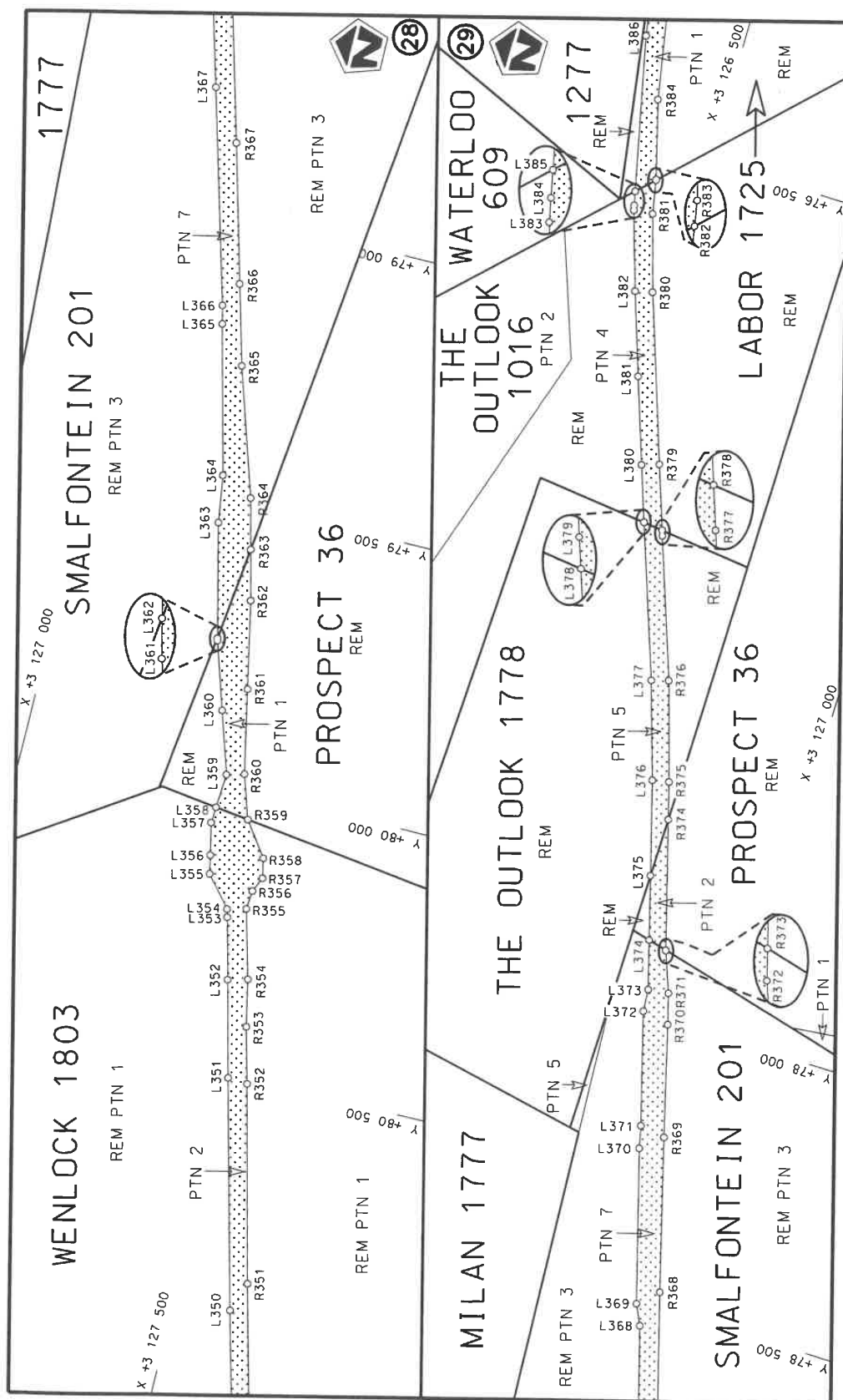
stel die padreserwe voor van 'n gedeelte
represents the road reserve of a portion
van Nasionale Roete N5
of National Route




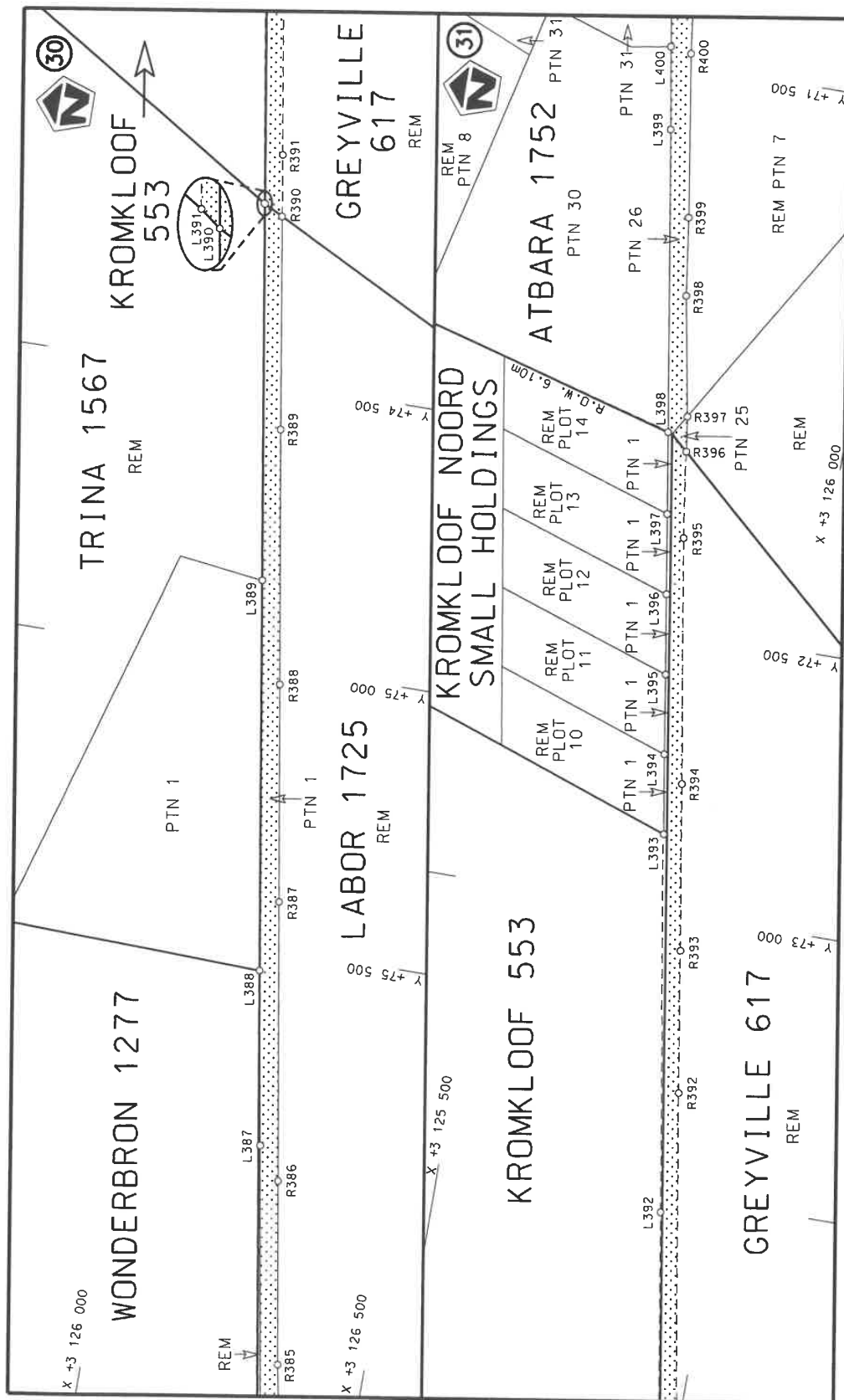
Die figuur getoon
The figure shown

Die Suid Afrikaanse Nasionale Padagentskap MSB Bpk
The South African National Roads Agency SOC Ltd





Die Suid Afrikaanse Nasionale Padagentskap MSB Bpk The South African National Roads Agency SOC Ltd	Die figuur getoon The figure shown	 stel die padreserwe voor van 'n gedeelte represents the road reserve of a portion van Nasionale Roete of National Route	Vel Sheet 14 of 27 Plan P1126/19
		2	N5 Seksie Section



Die Suid Afrikaanse Nasionale Padagentskap MSB Bpk
The South African National Roads Agency SOC Ltd

Die figuur getoon
The figure shown



stelt die padreserwe voor van 'n gedeelte
represents the road reserve of a portion
van Nasionale Roete
of National Route

N5
Seksie
Section

2

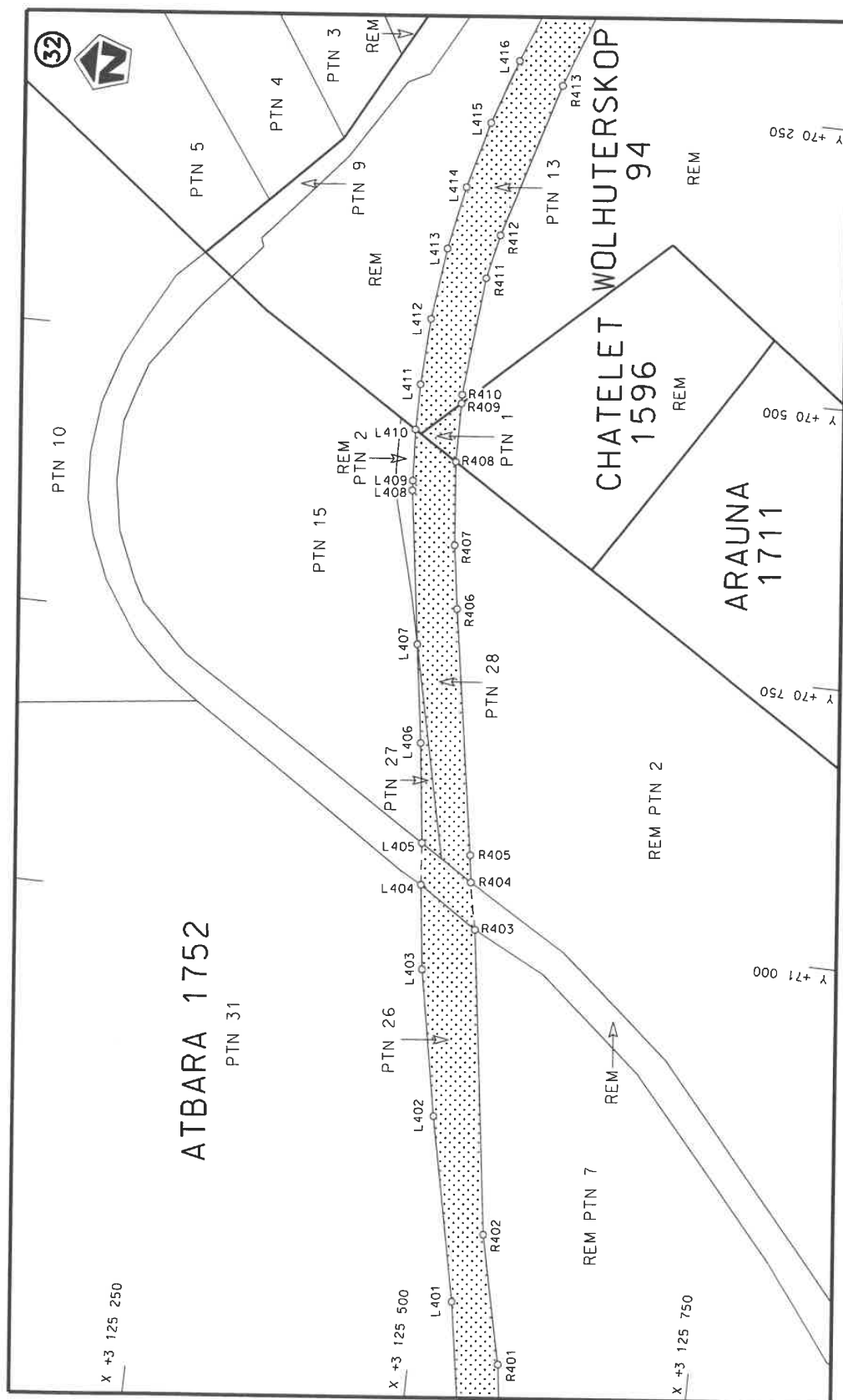
Vel
Sheet


15
of

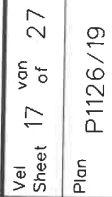
27

Plan

P1126/19



Die Suid Afrikaanse Nasionale Padagentskap MSB Bpk The South African National Roads Agency SOC Ltd	Die figuur getoon The figure shown		steldie padreserwe voor van 'n gedeelte represents the road reserve of a portion van Nasionale Roete of National Route	
			N5	2
			Vel Sheet	16 of
			Plan	P1126/19



steldie padreserwe voor van 'n gedeelte
represents the road reserve of a portion
van Nasionale Roete N5 Seksie
of National Route Section



Die figuur getoon

Die Suid Afrikaanse Nasionale Padagentskap MSB Bpk
The South African National Roads Agency SOC Ltd

PADRESERWE KOÖRDINATE / ROAD RESERVE CO-ORDINATES						
LINKERKANT/LEFT HAND SIDE				REGTERKANT/RIGHT HAND SIDE		
	Y	X	WG 27 ^a		Y	X
L1	-61 834.74	3 133 363.27		R1	-61 829.33	3 133 395.63
L2	-62 069.08	3 133 350.51		R2	-62 025.19	3 133 384.93
L3	-62 430.45	3 133 329.60		R3	-62 075.43	3 133 381.70
L4	-62 655.37	3 133 315.96		R4	-62 270.79	3 133 370.02
L5	-63 125.74	3 133 287.38		R5	-62 814.75	3 133 338.84
L6	-63 913.30	3 133 238.19		R6	-63 329.53	3 133 309.11
L7	-64 122.11	3 133 225.49		R7	-63 353.29	3 133 310.09
L8	-64 151.19	3 133 220.64		R8	-63 358.31	3 133 312.57
L9	-64 196.27	3 133 209.49		R9	-63 384.66	3 133 311.20
L10	-64 224.44	3 133 216.94		R10	-63 389.40	3 133 308.04
L11	-64 255.87	3 133 225.26		R11	-63 409.85	3 133 304.59
L12	-64 256.99	3 133 224.30		R12	-63 947.42	3 133 274.59
L13	-64 519.82	3 133 210.09		R13	-64 193.56	3 133 262.31
L14	-64 756.27	3 133 194.22		R14	-64 227.19	3 133 261.59
L15	-65 254.27	3 133 141.93		R15	-64 242.15	3 133 259.48
L16	-65 445.31	3 133 121.71		R16	-64 364.68	3 133 254.01
L17	-65 723.67	3 133 091.32		R17	-64 524.27	3 133 241.16
L18	-65 854.58	3 133 072.57		R18	-64 760.40	3 133 225.55
L19	-65 904.90	3 133 062.58		R19	-65 255.36	3 133 172.87
L20	-65 913.14	3 133 004.92		R20	-65 556.81	3 133 143.11
L21	-65 938.81	3 133 022.95		R21	-65 670.21	3 133 131.18
L22	-65 932.19	3 133 045.43		R22	-65 746.85	3 133 122.23
L23	-65 934.59	3 133 058.21		R23	-65 823.37	3 133 111.62
L24	-66 056.53	3 133 034.56		R24	-65 880.00	3 133 100.80
L25	-66 150.35	3 133 010.17		R25	-66 061.04	3 133 065.84
L26	-66 494.85	3 132 920.15		R26	-66 479.12	3 132 956.63
L27	-67 535.21	3 132 638.76		R27	-67 139.24	3 132 784.74
L28	-69 205.63	3 132 187.00		R28	-67 204.22	3 132 760.52
L29	-69 405.38	3 132 133.47		R29	-67 237.93	3 132 751.40
L30	-69 647.32	3 132 067.43		R30	-69 417.69	3 132 161.99
L31	-69 800.94	3 132 026.08		R31	-69 772.26	3 132 066.42
L32	-69 868.90	3 132 010.34		R32	-69 862.12	3 132 046.55
L33	-69 910.41	3 132 003.42		R33	-69 941.94	3 132 033.64
L34	-69 944.41	3 131 999.92		R34	-70 028.03	3 132 023.47
L35	-69 992.70	3 131 990.54		R35	-70 345.26	3 131 989.59
L36	-70 084.76	3 131 980.62		R36	-70 474.15	3 131 976.07
L37	-70 150.15	3 131 974.54		R37	-70 671.72	3 131 955.22
L38	-70 153.91	3 131 973.41		R38	-71 174.72	3 131 900.98
L39	-70 195.75	3 131 952.79		R39	-71 482.95	3 131 868.34
L40	-70 215.13	3 131 967.56		R40	-71 819.31	3 131 833.96
L41	-70 332.39	3 131 955.47		R41	-72 230.42	3 131 790.56
L42	-70 427.03	3 131 945.35		R42	-72 788.79	3 131 731.56
L43	-70 808.38	3 131 904.28		R43	-73 088.91	3 131 699.76
L44	-71 266.80	3 131 856.22		R44	-73 318.81	3 131 675.52
L45	-71 479.91	3 131 832.85		R45	-73 409.58	3 131 665.95
L46	-71 624.89	3 131 818.60		R46	-74 098.18	3 131 593.46
L47	-72 104.88	3 131 767.72		R47	-74 331.55	3 131 569.05
L48	-72 707.65	3 131 703.39		R48	-74 533.00	3 131 553.86
L49	-72 944.51	3 131 678.87		R49	-74 608.20	3 131 552.06
L50	-73 307.47	3 131 640.65		R50	-74 711.81	3 131 550.26
L51	-73 791.16	3 131 589.91		R51	-74 920.61	3 131 557.51
				Vel Sheet	18 of	Van 27 P1126/19

PADRESERWE KOÖRDINATE / ROAD RESERVE CO-ORDINATES									
LINKERKANT/LEFT HAND SIDE					REGTERKANT/RIGHT HAND SIDE				
	Y		X	WG 27 ^a		Y		X	
L52	-74 114.95	3	131	555.49	R52	-75 068.89	3	131	570.55
L53	-74 325.19	3	131	533.55	R53	-75 251.01	3	131	595.39
L54	-74 355.49	3	131	531.61	R54	-75 325.23	3	131	609.29
L55	-74 420.19	3	131	527.86	R55	-75 412.05	3	131	625.56
L56	-74 550.72	3	131	520.19	R56	-75 542.81	3	131	654.50
L57	-74 618.14	3	131	516.05	R57	-75 597.49	3	131	666.61
L58	-74 665.79	3	131	516.66	R58	-76 000.83	3	131	756.85
L59	-74 884.56	3	131	519.33	R59	-76 723.29	3	131	920.08
L60	-74 988.43	3	131	527.06	R60	-76 797.81	3	131	937.19
L61	-75 037.93	3	131	530.90	R61	-77 135.73	3	132	013.36
L62	-75 151.96	3	131	544.81	R62	-77 415.28	3	132	074.08
L63	-75 190.79	3	131	549.48	R63	-77 685.80	3	132	134.76
L64	-75 267.23	3	131	561.74	R64	-77 699.75	3	132	137.47
L65	-75 327.19	3	131	571.61	R65	-77 787.59	3	132	158.46
L66	-75 403.58	3	131	587.10	R66	-77 914.72	3	132	187.79
L67	-75 417.92	3	131	589.94	R67	-78 134.25	3	132	238.81
L68	-75 541.07	3	131	617.26	R68	-78 317.87	3	132	280.30
L69	-75 557.18	3	131	620.86	R69	-78 423.29	3	132	309.63
L70	-75 940.12	3	131	707.21	R70	-78 597.91	3	132	343.02
L71	-76 768.65	3	131	895.32	R71	-79 160.67	3	132	470.29
L72	-76 848.27	3	131	913.35	R72	-80 466.62	3	132	764.17
L73	-76 964.85	3	131	938.11	R73	-81 273.62	3	132	945.74
L74	-77 503.77	3	132	059.37	R74	-81 533.01	3	133	005.00
L75	-77 698.01	3	132	103.57	R75	-81 569.44	3	133	016.08
L76	-77 832.12	3	132	133.59	R76	-81 649.45	3	133	033.98
L77	-77 905.43	3	132	149.98	R77	-81 729.41	3	133	045.92
L78	-78 288.23	3	132	236.72	R78	-81 888.46	3	133	072.23
L79	-79 199.98	3	132	442.18	R79	-81 990.67	3	133	085.27
L80	-81 276.38	3	132	909.61	R80	-82 120.89	3	133	096.52
L81	-81 462.21	3	132	952.21	R81	-82 203.85	3	133	100.51
L82	-81 734.41	3	133	008.10	R82	-82 238.87	3	133	100.48
L83	-81 971.32	3	133	047.45	R83	-82 527.75	3	133	114.53
L84	-82 184.89	3	133	066.48	R84	-84 067.70	3	133	189.75
L85	-82 533.16	3	133	081.88	R85	-84 628.80	3	133	219.82
L86	-82 532.90	3	133	083.44	R86	-84 632.99	3	133	227.42
L87	-84 064.16	3	133	158.67	R87	-84 657.79	3	133	222.73
L88	-84 548.77	3	133	181.63	R88	-84 663.85	3	133	219.69
L89	-84 581.44	3	133	182.21	R89	-84 713.51	3	133	220.85
L90	-84 643.83	3	133	186.35	R90	-85 050.95	3	133	237.41
L91	-84 666.18	3	133	187.38	R91	-85 172.32	3	133	227.94
L92	-84 712.68	3	133	189.54	R92	-85 281.58	3	133	217.16
L93	-84 938.81	3	133	199.58	R93	-85 347.23	3	133	205.35
L94	-85 021.82	3	133	203.27	R94	-85 388.20	3	133	197.26
L95	-85 029.07	3	133	202.83	R95	-85 603.96	3	133	150.52
L96	-85 234.34	3	133	190.37	R96	-85 733.48	3	133	122.85
L97	-85 404.19	3	133	161.69	R97	-85 961.03	3	133	072.74
L98	-85 602.50	3	133	118.43	R98	-86 313.63	3	132	996.14
L99	-85 792.70	3	133	077.48	R99	-86 317.39	3	133	012.75
L100	-86 115.72	3	133	007.29	R100	-86 793.66	3	132	980.48
L101	-86 316.31	3	132	962.77	R101	-86 966.69	3	133	026.59
L102	-86 367.23	3	132	951.36	R102	-87 063.02	3	133	054.11
					<div> <div>Vel</div> <div>Sheet</div> </div> <div> <div>19</div> <div>of</div> </div> <div> <div>Van</div> <div>27</div> </div> <div>P1126/19</div>				

PADRESERWE KOÖRDINATE / ROAD RESERVE CO-ORDINATES					
LINKERKANT/LEFT HAND SIDE			REGTERKANT/RIGHT HAND SIDE		
	Y	X	WG 27 ^o	Y	X
L103	-86 445.93	3 132 938.91		R104	-87 181.66 3 133 087.43
L104	-86 525.43	3 132 932.94		R105	-87 243.67 3 133 101.71
L105	-86 605.97	3 132 931.66		R106	-87 256.10 3 133 104.01
L106	-86 654.65	3 132 933.06		R107	-87 327.75 3 133 116.66
L107	-86 693.82	3 132 935.84		R108	-87 370.17 3 133 122.23
L108	-86 802.03	3 132 949.49		R109	-87 416.58 3 133 125.57
L109	-86 899.50	3 132 973.31		R110	-87 506.32 3 133 127.40
L110	-86 918.80	3 132 978.62		R111	-87 566.85 3 133 127.12
L111	-86 928.28	3 132 980.19		R112	-87 626.30 3 133 120.83
L112	-86 990.68	3 132 999.24		R113	-87 685.77 3 133 113.58
L113	-87 052.77	3 133 016.90		R114	-87 715.95 3 133 108.82
L114	-87 130.24	3 133 039.88		R115	-87 759.59 3 133 099.19
L115	-87 182.75	3 133 054.44		R116	-88 024.83 3 133 033.91
L116	-87 275.36	3 133 076.74		R117	-88 287.34 3 133 064.67
L117	-87 395.25	3 133 093.16		R118	-88 369.25 3 133 074.27
L118	-87 515.87	3 133 097.10		R119	-88 414.17 3 133 080.75
L119	-87 596.03	3 133 093.08		R120	-88 534.23 3 133 078.90
L120	-87 601.47	3 133 091.02		R121	-89 527.94 3 132 914.11
L121	-87 688.54	3 133 079.02		R122	-90 245.77 3 132 795.02
L122	-87 715.87	3 133 074.15		R123	-90 806.29 3 132 701.68
L123	-87 796.74	3 133 056.64		R124	-90 993.79 3 132 688.35
L124	-87 895.83	3 133 028.51		R125	-91 038.75 3 132 688.33
L125	-87 948.03	3 133 012.97		R126	-91 119.21 3 132 688.38
L126	-88 016.90	3 133 003.24		R127	-91 288.59 3 132 694.60
L127	-88 094.36	3 132 992.81		R128	-91 350.71 3 132 706.08
L128	-88 134.83	3 132 999.15		R129	-91 424.46 3 132 709.71
L129	-88 346.64	3 133 038.10		R130	-91 490.40 3 132 712.95
L130	-88 506.66	3 133 045.41		R131	-91 535.70 3 132 712.06
L131	-88 631.09	3 133 030.87		R132	-91 575.60 3 132 715.02
L132	-89 518.96	3 132 883.68		R133	-91 692.71 3 132 723.71
L133	-90 251.84	3 132 762.05		R134	-91 809.38 3 132 745.77
L134	-90 800.52	3 132 670.55		R135	-92 003.41 3 132 741.67
L135	-90 958.69	3 132 655.20		R136	-92 093.12 3 132 752.48
L136	-91 007.82	3 132 650.53		R137	-92 114.14 3 132 776.60
L137	-91 096.16	3 132 656.64		R138	-92 149.38 3 132 779.29
L138	-91 124.04	3 132 657.39		R139	-92 152.20 3 132 772.96
L139	-91 214.01	3 132 662.83		R140	-92 169.71 3 132 757.54
L140	-91 363.47	3 132 669.86		R141	-92 209.64 3 132 756.56
L141	-91 512.31	3 132 677.18		R142	-92 331.65 3 132 762.87
L142	-91 661.79	3 132 683.98		R143	-92 531.67 3 132 768.87
L143	-91 865.65	3 132 691.68		R144	-92 531.51 3 132 768.18
L144	-92 029.51	3 132 702.32		R145	-92 574.75 3 132 769.93
L145	-92 325.16	3 132 718.21		R146	-92 610.17 3 132 771.19
L146	-92 472.98	3 132 731.83		R147	-92 639.79 3 132 764.74
L147	-92 523.05	3 132 732.64		R148	-92 699.46 3 132 751.74
L148	-92 559.04	3 132 733.00		R149	-92 713.12 3 132 748.77
L149	-92 616.05	3 132 727.59		R150	-92 765.06 3 132 733.55
L150	-92 642.46	3 132 725.08		R151	-92 848.55 3 132 702.30
L151	-92 710.27	3 132 714.29		R152	-92 943.44 3 132 658.19
L152	-92 715.12	3 132 713.12		R153	-93 243.71 3 132 510.90
L153	-92 715.40	3 132 713.55		R154	-93 298.35 3 132 484.15
			Vel Sheet 20	Van of 27	P1126/19

PADRESERWE KOÖRDINATE / ROAD RESERVE CO-ORDINATES											
LINKERKANT/LEFT HAND SIDE					REGTERKANT/RIGHT HAND SIDE						
	Y		X	WG 27°		Y		X			
L154	-92	716.65	3	132	712.75	R155	-93	350.69	3	132	459.92
L155	-92	738.99	3	132	707.34	R156	-93	372.89	3	132	449.63
L156	-92	759.23	3	132	702.44	R157	-93	379.05	3	132	446.78
L157	-92	798.06	3	132	688.73	R158	-93	396.62	3	132	438.16
L158	-92	840.12	3	132	673.86	R159	-93	414.58	3	132	429.35
L159	-92	959.79	3	132	615.59	R160	-93	524.93	3	132	375.21
L160	-93	227.83	3	132	483.63	R161	-93	588.65	3	132	342.17
L161	-93	361.76	3	132	418.24	R162	-93	861.10	3	132	208.37
L162	-93	404.00	3	132	394.88	R163	-94	041.02	3	132	120.06
L163	-93	416.76	3	132	390.91						
L164	-93	566.66	3	132	317.80						
L165	-93	714.24	3	132	245.83						
L166	-93	952.88	3	132	127.03						
L167	-93	938.25	3	132	096.52						
L168	-93	958.39	3	132	086.60						
L169	-93	976.99	3	132	115.18						
L170	-94	041.67	3	132	084.13						

PADRESERWE KOÖRDINATE / ROAD RESERVE CO-ORDINATES									
LINKERKANT/LEFT HAND SIDE					REGTERKANT/RIGHT HAND SIDE				
	Y		X	WG 29 ^a		Y		X	
L171	102 106.18	3	132	135.26	R164	102 103.35	3	132	168.55
L172	102 038.82	3	132	100.84	R165	102 074.05	3	132	154.19
L173	101 909.17	3	132	034.59	R166	101 983.99	3	132	108.39
L174	101 867.08	3	132	012.86	R167	101 865.90	3	132	048.33
L175	101 811.51	3	131	978.54	R168	101 806.31	3	132	013.70
L176	101 776.32	3	131	953.33	R169	101 735.26	3	131	959.45
L177	101 728.68	3	131	912.75	R170	101 658.58	3	131	887.77
L178	101 710.84	3	131	896.15	R171	101 583.00	3	131	788.29
L179	101 664.49	3	131	847.78	R172	101 535.12	3	131	711.72
L180	101 571.53	3	131	711.94	R173	101 473.11	3	131	612.55
L181	101 460.76	3	131	533.73	R174	101 302.67	3	131	338.23
L182	101 310.41	3	131	291.88	R175	101 289.73	3	131	316.85
L183	101 239.26	3	131	177.36	R176	101 276.51	3	131	295.82
L184	101 198.38	3	131	108.58	R177	101 182.36	3	131	145.72
L185	101 145.16	3	131	038.97	R178	101 144.23	3	131	093.76
L186	101 079.76	3	130	961.47	R179	101 068.23	3	130	998.26
L187	100 993.91	3	130	871.34	R180	100 977.67	3	130	903.39
L188	100 924.42	3	130	805.81	R181	100 938.81	3	130	868.15
L189	100 849.09	3	130	744.22	R182	100 795.63	3	130	755.04
L190	100 767.87	3	130	683.25	R183	100 723.26	3	130	702.61
L191	100 654.01	3	130	612.97	R184	100 662.00	3	130	664.38
L192	100 572.50	3	130	567.97	R185	100 591.08	3	130	623.77
L193	100 522.18	3	130	542.74	R186	100 489.88	3	130	570.26
L194	100 429.20	3	130	501.83	R187	100 411.76	3	130	538.02
L195	100 286.40	3	130	449.32	R188	100 298.49	3	130	497.67
L196	100 147.30	3	130	408.87	R189	100 139.85	3	130	449.77
L197	100 045.79	3	130	378.84	R190	100 139.53	3	130	450.71
L198	100 019.16	3	130	374.27	R191	99 830.05	3	130	354.79
L199	99 831.37	3	130	318.44	R192	99 788.35	3	130	337.06
L200	99 731.61	3	130	287.75	R193	99 720.84	3	130	317.00
L201	99 690.86	3	130	263.15	R194	99 705.37	3	130	321.59
L202	99 571.68	3	130	224.38	R195	99 675.57	3	130	313.96
L203	99 535.46	3	130	188.07	R196	99 521.68	3	130	268.19
L204	99 511.38	3	130	174.92	R197	99 351.45	3	130	209.96
L205	99 483.46	3	130	175.66	R198	99 320.21	3	130	197.33
L206	99 440.74	3	130	190.83	R199	99 145.65	3	130	145.00
L207	99 256.46	3	130	140.26	R200	99 071.26	3	130	136.43
L208	99 025.32	3	130	063.27	R201	99 018.21	3	130	122.36
L209	98 982.57	3	130	048.46	R202	98 964.54	3	130	109.69
L210	98 891.58	3	130	020.14	R203	98 891.52	3	130	090.65
L211	98 794.18	3	129	996.19	R204	98 824.26	3	130	069.15
L212	98 528.43	3	129	928.74	R205	98 536.79	3	129	964.40
L213	98 515.82	3	129	924.99	R206	98 527.12	3	129	961.51
L214	98 372.70	3	129	882.25	R207	98 061.53	3	129	822.36
L215	97 978.10	3	129	764.78	R208	97 979.95	3	129	798.26
L216	97 897.90	3	129	732.74	R209	97 898.81	3	129	781.86
L217	97 686.21	3	129	669.27	R210	97 865.66	3	129	772.25
L218	97 431.11	3	129	611.70	R211	97 800.36	3	129	745.21
L219	97 327.96	3	129	588.96	R212	97 655.56	3	129	702.43
L220	97 277.89	3	129	580.29	R213	97 619.77	3	129	693.21
L221	97 238.87	3	129	575.16	R214	97 598.53	3	129	694.95
					Vel Sheet 22 Van of 27 P1126/19				

PADRESERWE KOÖRDINATE / ROAD RESERVE CO-ORDINATES						
LINKERKANT/LEFT HAND SIDE				REGTERKANT/RIGHT HAND SIDE		
	Y	X	WG 29 ^o		Y	X
L222	97 221.43	3 129 573.86	R215	97 509.68	3 129 674.57	
L223	97 101.91	3 129 564.96	R216	97 378.04	3 129 650.15	
L224	97 047.26	3 129 561.65	R217	97 230.75	3 129 623.85	
L225	96 975.68	3 129 555.80	R218	97 126.90	3 129 605.41	
L226	96 906.83	3 129 551.93	R219	97 108.31	3 129 600.92	
L227	96 846.74	3 129 548.07	R220	97 057.98	3 129 595.12	
L228	96 761.32	3 129 546.17	R221	97 029.49	3 129 593.14	
L229	96 714.94	3 129 546.97	R222	96 860.57	3 129 585.70	
L230	96 668.61	3 129 547.96	R223	96 751.01	3 129 583.44	
L231	96 627.35	3 129 535.35	R224	96 671.38	3 129 583.53	
L232	96 602.04	3 129 536.33	R225	96 635.22	3 129 597.13	
L233	96 556.29	3 129 548.14	R226	96 610.09	3 129 598.36	
L234	96 443.09	3 129 554.60	R227	96 563.39	3 129 584.98	
L235	96 310.34	3 129 561.91	R228	96 521.14	3 129 586.65	
L236	96 293.21	3 129 564.13	R229	96 168.60	3 129 600.60	
L237	96 101.94	3 129 572.11	R230	95 905.50	3 129 612.72	
L238	95 893.30	3 129 580.83	R231	95 479.78	3 129 628.74	
L239	95 576.64	3 129 594.07	R232	95 313.04	3 129 640.34	
L240	95 375.68	3 129 602.63	R233	95 242.93	3 129 641.07	
L241	95 311.69	3 129 599.19	R234	95 166.63	3 129 641.78	
L242	95 290.59	3 129 600.35	R235	94 852.09	3 129 654.98	
L243	95 216.09	3 129 609.33	R236	94 680.97	3 129 662.02	
L244	94 856.81	3 129 624.18	R237	94 507.36	3 129 666.24	
L245	94 774.67	3 129 627.57	R238	94 366.47	3 129 662.02	
L246	94 661.01	3 129 631.90	R239	94 322.25	3 129 659.39	
L247	94 517.36	3 129 634.88	R240	94 292.45	3 129 659.44	
L248	94 352.84	3 129 631.15	R241	94 212.13	3 129 652.85	
L249	94 205.43	3 129 620.75	R242	94 131.87	3 129 645.83	
L250	94 133.27	3 129 612.78	R243	94 118.04	3 129 644.28	
L251	94 096.10	3 129 608.68	R244	94 087.20	3 129 640.67	
L252	93 991.76	3 129 594.06	R245	94 032.36	3 129 634.15	
L253	93 858.88	3 129 571.78	R246	93 952.69	3 129 622.84	
L254	93 808.39	3 129 561.19	R247	93 440.64	3 129 533.09	
L255	93 623.76	3 129 529.01	R248	93 361.38	3 129 520.23	
L256	93 526.18	3 129 508.16	R249	93 272.98	3 129 502.90	
L257	93 408.30	3 129 485.45	R250	93 086.47	3 129 471.11	
L258	93 309.38	3 129 468.25	R251	93 026.20	3 129 462.97	
L259	93 152.57	3 129 448.86	R252	92 405.06	3 129 354.87	
L260	92 786.77	3 129 384.81	R253	92 395.60	3 129 353.24	
L261	92 417.95	3 129 320.72	R254	92 368.71	3 129 348.01	
L262	92 269.07	3 129 291.63	R255	92 262.62	3 129 327.47	
L263	92 115.35	3 129 255.30	R256	92 174.12	3 129 307.97	
L264	91 186.36	3 129 007.06	R257	92 110.82	3 129 291.98	
L265	91 174.11	3 128 998.61	R258	91 593.71	3 129 154.15	
L266	91 088.74	3 128 970.94	R259	91 149.48	3 129 034.89	
L267	91 049.55	3 128 962.35	R260	91 095.13	3 129 027.30	
L268	90 997.75	3 128 956.66	R261	91 045.96	3 129 012.72	
L269	90 740.18	3 128 887.84	R262	90 989.70	3 128 990.78	
L270	90 700.49	3 128 861.68	R263	90 694.69	3 128 916.40	
L271	90 676.50	3 128 855.34	R264	90 353.53	3 128 822.68	
L272	90 629.12	3 128 858.15	R265	90 129.75	3 128 778.91	
				Vel Sheet 23	Van of 27	P1126/19

PADRESERWE KOÖRDINATE / ROAD RESERVE CO-ORDINATES					
LINKERKANT/LEFT HAND SIDE			REGTERKANT/RIGHT HAND SIDE		
	Y	X	WG 29 ^e	Y	X
L273	90 302.14	3 128 770.75	R266	90 062.02	3 128 774.97
L274	89 987.78	3 128 710.58	R267	89 985.51	3 128 781.94
L275	89 944.82	3 128 706.75	R268	89 929.46	3 128 780.48
L276	89 756.96	3 128 725.79	R269	89 823.97	3 128 756.23
L277	89 657.78	3 128 733.42	R270	89 773.55	3 128 757.84
L278	89 558.85	3 128 745.97	R271	89 672.99	3 128 764.90
L279	89 522.94	3 128 741.61	R272	89 573.50	3 128 776.96
L280	89 500.35	3 128 746.10	R273	89 474.65	3 128 791.51
L281	89 478.79	3 128 760.20	R274	89 376.80	3 128 816.11
L282	89 459.42	3 128 763.64	R275	89 278.94	3 128 843.47
L283	89 303.13	3 128 798.69	R276	89 183.17	3 128 875.61
L284	89 302.56	3 128 798.83	R277	89 089.90	3 128 912.25
L285	89 170.90	3 128 840.85	R278	89 000.03	3 128 955.64
L286	89 060.70	3 128 883.38	R279	88 945.08	3 128 982.98
L287	88 948.77	3 128 938.71	R280	88 942.94	3 128 984.04
L288	88 777.44	3 129 023.41	R281	88 816.44	3 129 046.96
L289	88 630.50	3 129 095.73	R282	88 776.47	3 129 066.32
L290	88 526.14	3 129 147.00	R283	88 742.57	3 129 099.10
L291	88 351.00	3 129 215.12	R284	88 715.51	3 129 112.14
L292	88 349.04	3 129 215.61	R285	88 668.22	3 129 118.15
L293	88 250.43	3 129 240.06	R286	88 660.74	3 129 121.70
L294	88 168.46	3 129 253.25	R287	88 545.22	3 129 179.22
L295	88 076.41	3 129 261.31	R288	88 470.17	3 129 212.98
L296	88 012.56	3 129 261.55	R289	88 441.54	3 129 223.99
L297	87 992.36	3 129 259.93	R290	88 374.00	3 129 245.68
L298	87 868.09	3 129 249.62	R291	88 340.23	3 129 255.16
L299	87 787.16	3 129 231.18	R292	88 335.92	3 129 256.07
L300	87 742.47	3 129 221.00	R293	88 295.70	3 129 264.59
L301	87 634.62	3 129 199.26	R294	88 268.86	3 129 271.10
L302	87 401.23	3 129 138.94	R295	88 225.08	3 129 279.78
L303	87 287.34	3 129 107.41	R296	88 169.77	3 129 289.39
L304	87 185.92	3 129 079.71	R297	88 031.85	3 129 299.09
L305	87 179.73	3 129 078.06	R298	87 926.65	3 129 295.13
L306	87 103.37	3 129 057.66	R299	87 855.99	3 129 286.71
L307	87 064.63	3 129 048.90	R300	87 797.54	3 129 276.36
L308	87 002.15	3 129 035.28	R301	87 740.24	3 129 262.13
L309	86 700.16	3 128 956.74	R302	87 700.38	3 129 248.51
L310	86 496.52	3 128 904.17	R303	87 588.66	3 129 219.58
L311	86 435.69	3 128 885.46	R304	87 408.57	3 129 173.04
L312	86 377.77	3 128 869.50	R305	87 241.15	3 129 129.57
L313	86 298.39	3 128 853.02	R306	87 147.88	3 129 106.95
L314	86 205.51	3 128 828.93	R307	87 084.74	3 129 091.20
L315	85 851.25	3 128 737.05	R308	87 022.31	3 129 072.81
L316	85 725.74	3 128 706.28	R309	86 983.09	3 129 062.65
L317	85 644.01	3 128 688.61	R310	86 695.32	3 128 988.10
L318	85 558.75	3 128 673.16	R311	86 688.70	3 128 986.25
L319	85 453.69	3 128 656.58	R312	86 496.77	3 128 936.50
L320	85 332.10	3 128 637.61	R313	86 475.27	3 128 934.02
L321	85 293.03	3 128 629.03	R314	86 423.38	3 128 922.50
L322	85 195.68	3 128 602.70	R315	86 387.11	3 128 913.35
L323	85 093.20	3 128 585.82	R316	86 324.53	3 128 895.17
			Vel Sheet	24	Van of 27
			P1126/19		

PADRESERWE KOÖRDINATE / ROAD RESERVE CO-ORDINATES						
LINKERKANT/LEFT HAND SIDE				REGTERKANT/RIGHT HAND SIDE		
	Y	X	WG 29 ^a		Y	X
L324	84 976.44	3 128 582.92		R317	86 278.80	3 128 880.01
L325	84 508.63	3 128 512.12		R318	86 006.04	3 128 809.32
L326	84 367.03	3 128 490.33		R319	85 811.25	3 128 759.03
L327	84 291.41	3 128 478.70		R320	85 686.14	3 128 731.29
L328	84 141.23	3 128 447.67		R321	85 601.80	3 128 718.05
L329	84 012.01	3 128 416.90		R322	85 526.38	3 128 700.90
L330	83 856.30	3 128 364.11		R323	85 290.38	3 128 664.33
L331	83 709.68	3 128 331.44		R324	85 288.04	3 128 664.00
L332	83 552.25	3 128 295.67		R325	85 228.00	3 128 659.37
L333	83 483.63	3 128 277.67		R326	85 147.87	3 128 646.86
L334	83 212.22	3 128 206.49		R327	85 088.91	3 128 633.22
L335	82 881.47	3 128 118.79		R328	85 081.19	3 128 631.91
L336	82 841.20	3 128 108.11		R329	84 349.30	3 128 518.50
L337	82 738.39	3 128 070.28		R330	84 295.59	3 128 509.90
L338	82 622.95	3 128 040.28		R331	84 221.83	3 128 496.75
L339	82 459.11	3 127 997.93		R332	84 099.63	3 128 472.71
L340	82 187.51	3 127 927.78		R333	83 973.54	3 128 445.25
L341	82 135.33	3 127 913.96		R334	83 845.29	3 128 417.91
L342	81 982.17	3 127 875.59		R335	83 746.84	3 128 389.54
L343	81 886.61	3 127 856.34		R336	83 594.19	3 128 340.35
L344	81 679.45	3 127 802.82		R337	83 540.91	3 128 326.40
L345	81 617.71	3 127 785.85		R338	83 416.09	3 128 293.69
L346	81 544.34	3 127 761.60		R339	83 057.09	3 128 197.62
L347	81 455.37	3 127 741.11		R340	82 880.80	3 128 152.09
L348	81 361.02	3 127 717.36		R341	82 746.68	3 128 117.45
L349	81 303.77	3 127 702.99		R342	82 624.41	3 128 086.81
L350	80 913.61	3 127 601.04		R343	82 479.11	3 128 045.02
L351	80 508.48	3 127 497.82		R344	82 358.94	3 128 016.96
L352	80 337.51	3 127 454.89		R345	82 263.15	3 127 988.50
L353	80 228.41	3 127 427.43		R346	82 154.32	3 127 959.56
L354	80 214.38	3 127 423.62		R347	81 684.06	3 127 837.70
L355	80 160.34	3 127 378.67		R348	81 432.70	3 127 771.02
L356	80 127.63	3 127 371.57		R349	81 291.57	3 127 739.05
L357	80 070.38	3 127 359.24		R350	81 151.53	3 127 694.47
L358	80 041.72	3 127 360.99		R351	80 859.64	3 127 619.57
L359	79 980.49	3 127 364.72		R352	80 510.92	3 127 533.25
L360	79 870.17	3 127 329.88		R353	80 411.62	3 127 507.18
L361	79 750.77	3 127 291.76		R354	80 328.00	3 127 489.45
L362	79 746.37	3 127 290.71		R355	80 205.84	3 127 456.64
L363	79 544.67	3 127 242.79		R356	80 172.28	3 127 459.27
L364	79 460.51	3 127 230.08		R357	80 145.40	3 127 471.18
L365	79 197.14	3 127 163.83		R358	80 110.34	3 127 463.90
L366	79 164.74	3 127 156.26		R359	80 049.46	3 127 420.92
L367	78 788.45	3 127 050.93		R360	79 971.55	3 127 395.38
L368	78 538.12	3 126 980.49		R361	79 822.27	3 127 364.38
L369	78 501.71	3 126 963.51		R362	79 666.88	3 127 331.87
L370	78 232.47	3 126 888.64		R363	79 577.88	3 127 309.77
L371	78 192.79	3 126 879.80		R364	79 488.08	3 127 287.48
L372	77 994.42	3 126 825.05		R365	79 261.78	3 127 215.39
L373	77 954.74	3 126 822.10		R366	79 120.10	3 127 176.47
L374	77 868.98	3 126 798.34		R367	78 876.53	3 127 110.08
				Vel Sheet	25 Van of 27	P1126/19

PADRESERWE KOÖRDINATE / ROAD RESERVE CO-ORDINATES					
LINKERKANT/LEFT HAND SIDE			REGTERKANT/RIGHT HAND SIDE		
	Y	X	WG 29°	Y	X
L375	77 757.29	3 126 767.39	R368	78 470.28	3 126 997.23
L376	77 592.28	3 126 721.67	R369	78 201.22	3 126 924.72
L377	77 420.93	3 126 668.72	R370	78 005.09	3 126 873.20
L378	77 153.26	3 126 575.40	R371	77 950.68	3 126 858.45
L379	77 152.84	3 126 575.25	R372	77 878.62	3 126 832.04
L380	77 055.49	3 126 541.57	R373	77 877.90	3 126 831.84
L381	76 905.40	3 126 490.21	R374	77 651.85	3 126 768.96
L382	76 760.62	3 126 441.14	R375	77 586.83	3 126 750.88
L383	76 622.67	3 126 397.51	R376	77 412.60	3 126 698.36
L384	76 613.94	3 126 395.54	R377	77 167.06	3 126 613.33
L385	76 589.45	3 126 389.98	R378	77 157.45	3 126 610.01
L386	76 317.27	3 126 328.24	R379	77 045.83	3 126 571.42
L387	75 851.78	3 126 252.82	R380	76 753.60	3 126 471.36
L388	75 542.15	3 126 201.46	R381	76 619.03	3 126 430.87
L389	74 851.62	3 126 093.75	R382	76 560.05	3 126 419.59
L390	74 186.55	3 125 989.63	R383	76 558.62	3 126 419.32
L391	74 185.65	3 125 988.44	R384	76 420.66	3 126 381.16
L392	73 535.94	3 125 885.31	R385	76 234.86	3 126 346.38
L393	72 866.52	3 125 778.48	R386	75 909.60	3 126 294.51
L394	72 725.36	3 125 755.89	R387	75 415.23	3 126 215.70
L395	72 583.96	3 125 734.27	R388	75 030.55	3 126 154.53
L396	72 442.07	3 125 711.91	R389	74 580.12	3 126 082.56
L397	72 300.29	3 125 689.49	R390	74 203.83	3 126 023.44
L398	72 155.64	3 125 666.20	R391	74 094.18	3 126 006.21
L399	71 621.44	3 125 580.29	R392	73 319.16	3 125 882.84
L400	71 475.51	3 125 556.13	R393	73 067.13	3 125 843.65
L401	71 334.87	3 125 533.28	R394	72 772.02	3 125 796.60
L402	71 170.69	3 125 498.49	R395	72 337.60	3 125 726.25
L403	71 040.79	3 125 473.71	R396	72 184.65	3 125 704.31
L404	70 965.51	3 125 464.39	R397	72 122.50	3 125 695.67
L405	70 928.04	3 125 461.11	R398	71 909.84	3 125 657.50
L406	70 839.15	3 125 450.14	R399	71 771.38	3 125 638.45
L407	70 751.29	3 125 437.17	R400	71 481.97	3 125 593.50
L408	70 614.56	3 125 417.60	R401	71 386.35	3 125 580.61
L409	70 605.70	3 125 416.98	R402	71 271.73	3 125 554.78
L410	70 560.01	3 125 414.28	R403	71 000.34	3 125 516.99
L411	70 519.28	3 125 414.21	R404	70 958.45	3 125 508.81
L412	70 459.86	3 125 417.08	R405	70 934.26	3 125 505.52
L413	70 395.72	3 125 424.58	R406	70 715.91	3 125 469.24
L414	70 339.09	3 125 435.52	R407	70 659.45	3 125 460.82
L415	70 279.44	3 125 450.91	R408	70 584.87	3 125 453.49
L416	70 221.57	3 125 470.06	R409	70 532.30	3 125 452.62
L417	70 127.89	3 125 505.85	R410	70 524.48	3 125 452.47
L418	70 035.85	3 125 538.76	R411	70 418.31	3 125 462.10
L419	69 999.67	3 125 546.16	R412	70 378.73	3 125 470.54
L420	69 941.47	3 125 547.82	R413	70 239.43	3 125 510.51
L421	69 929.15	3 125 546.85	R414	70 136.26	3 125 547.38
L422	69 888.92	3 125 538.20	R415	70 046.19	3 125 573.94
L423	69 854.44	3 125 525.07	R416	70 018.05	3 125 576.47
L424	69 817.51	3 125 507.01	R417	69 979.98	3 125 579.88
L425	69 796.16	3 125 493.22	R418	69 967.92	3 125 580.81
			Vel Sheet	26	Van of 27
			P1126/19		

This gazette is also available free online at www.gpwonline.co.za