

---

**GOVERNMENT NOTICES • GOEWERMENTSKENNISGEWINGS**

---

**DEPARTMENT OF TRANSPORT****NO. 6245****30 May 2025**

---

**THE SOUTH AFRICAN NATIONAL ROADS  
AGENCY SOC LIMITED****Registration No: 1998/009584/30**

---

**DECLARATION AMENDMENT OF NATIONAL ROAD N2 SECTION 15**

AMENDMENT OF DECLARATION No. 327 OF 2018.

By virtue of Section 40 (1)(b) of The South African National Roads Agency Limited and National Roads Act, 1998 (Act No. 7 of 1998), I hereby amend Declaration No. 327 of 2018 by substituting it in its entirety with the accompanying sheets 1 to 23 of Plan No. P1189/19.

In the town of King William's Town the route enters the town along N2 Section 15 from the west and follows the street known as Cathcart Street at time of declaration in a general eastern direction, therefrom follows the street known as Buffalo Road at the time of declaration in a general southern direction, from there follows the street known as Grey Street at the time of declaration in a general eastern direction, from there follows the street known as Alexandra Road at the time of declaration in a general southern direction.

**(National Road N2 Section 15: King William's Town – Mdantsane Interchange)**  
**MINISTER OF TRANSPORT**

## DEPARTEMENT VAN VERVOER

NO. 6245

30 Mei 2025

**DIE SUID-AFRIKAANSE NASIONALE  
PADAGENTSKAP MSB BEPERK**

Registrasie No: 1998/009584/30

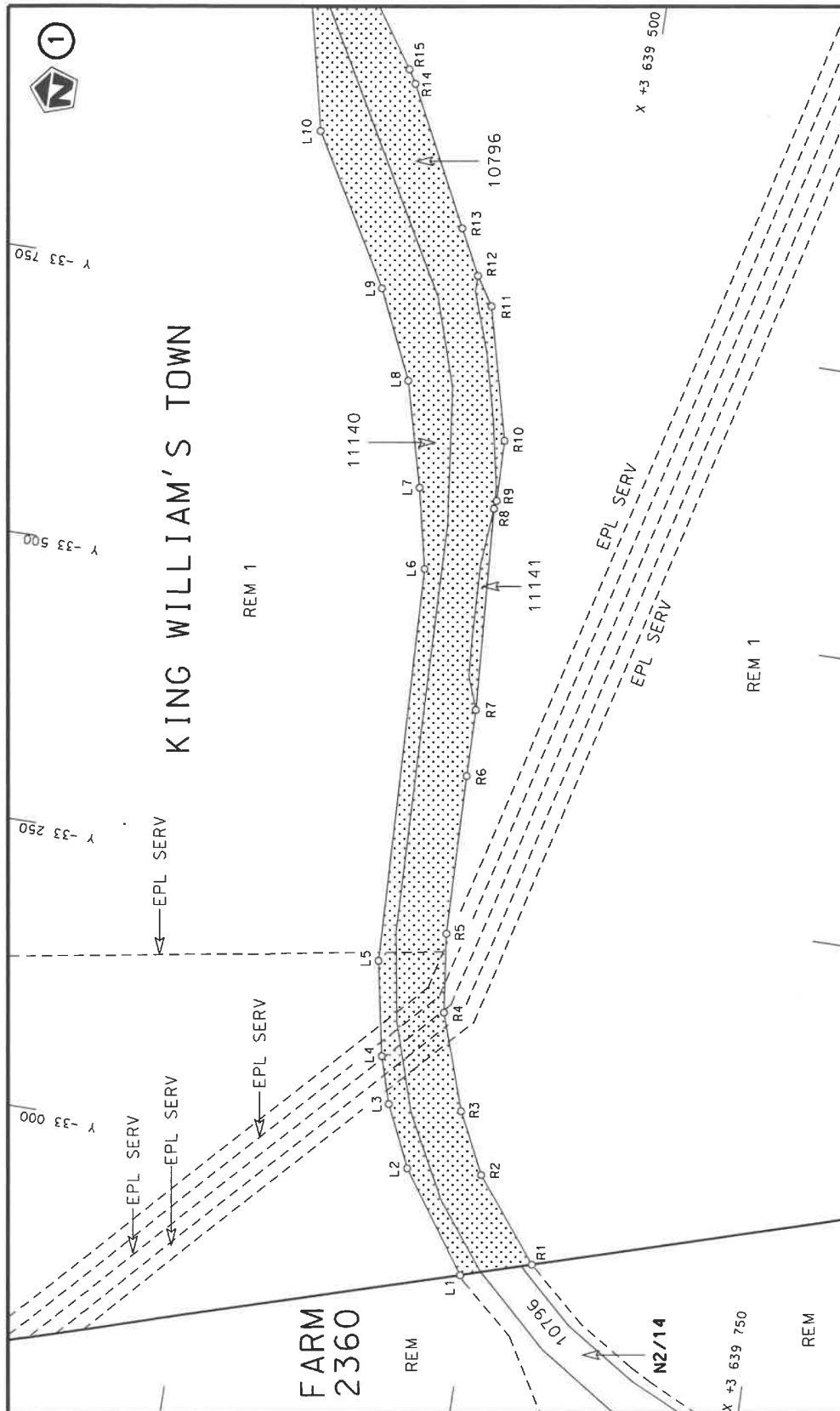
**VERKLARING WYSIGING VAN NASIONALE PAD N2 SEKSIE 15**


WYSIGING VAN VERKLARING No. 327 VAN 2018.

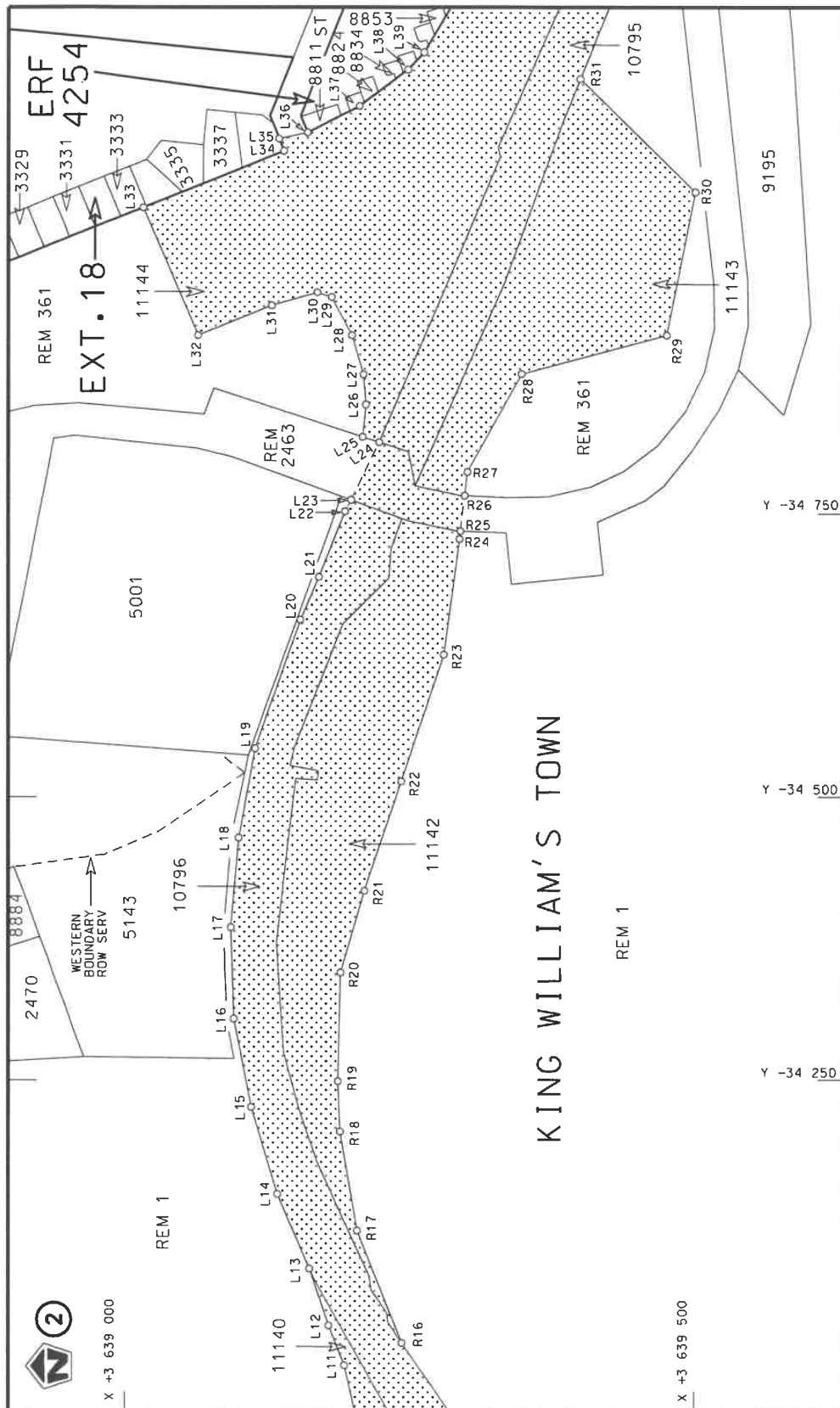
Kragtens Artikel 40(1)(b) van die Wet op die Suid-Afrikaanse Nasionale Padagentskap Beperk en op Nasionale Paaie, 1998 (Wet No. 7 van 1998), wysig ek hiermee Verklaring No. 327 van 2018 deur dit in sy geheel te vervang met bygaande velle 1 tot 23 van Plan No. P1189/19.

In die dorp van King William's Town kom die pad die dorp binne van uit die weste langs die N2 Seksie 15 en volg die straat bekend as Cathcartstraat tydens datum van verklaring in 'n algemene oostelike rigting, daarvandaan volg dit die straat bekend as Buffaloweg tydens datum van verklaring in 'n algemene suidelike rigting, van daar verder volg dit die straat bekend as Greystraat tydens datum van verklaring in 'n algemene oostelike rigting, van daar verder volg dit die straat bekend as Alexandraweg tydens datum van verklaring in 'n algemene suidelike rigting.

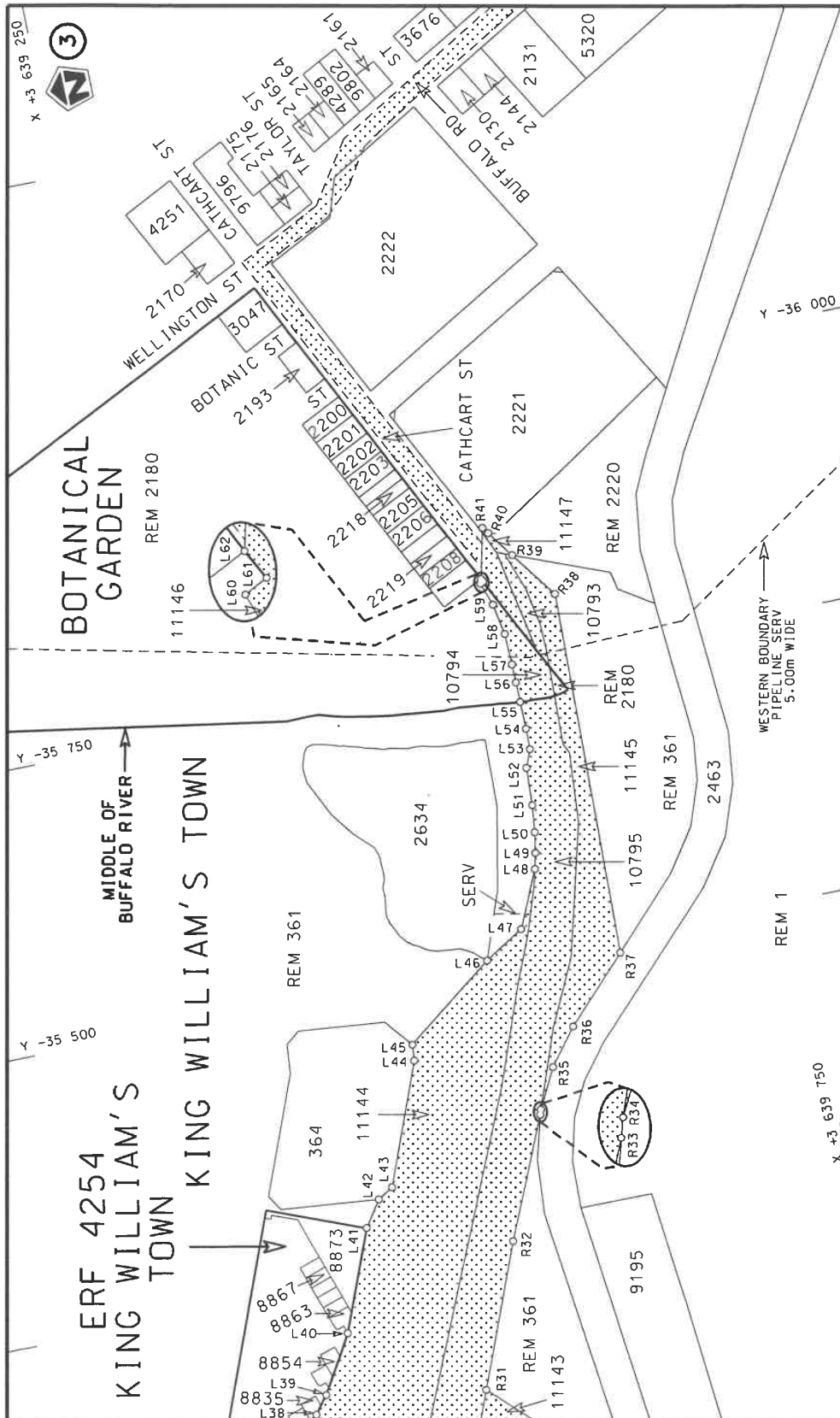
**(Nasionale Pad N2 Seksie 15: King William's Town – Mdantsane Wisselaar)**  
**MINISTER VAN VERVOER**




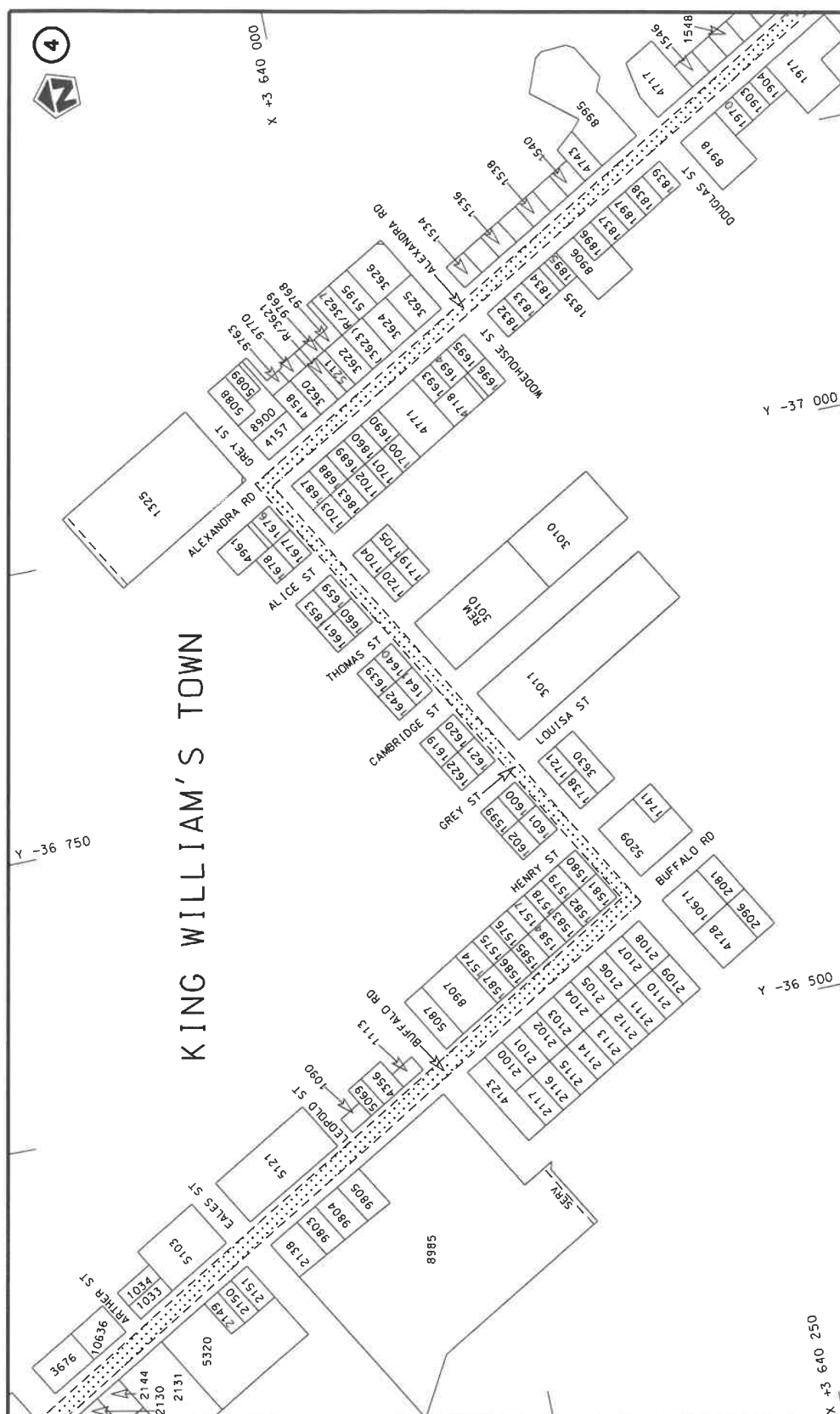
Die Suid Afrikaanse Nasionale Padagentskap MSB Bpk The South African National Roads Agency SOC Ltd	Die figuur getoon The figure shown		steldie padreserwe voor van 'n gedeelte represents the road reserve of a portion van Nasionale Roete N2 of National Route	Vel Sheet 1 of 23 Plan P1189/19
---	---------------------------------------	---	--	------------------------------------




Die Suid Afrikaanse Nasionale Padagentskap MSB Bpk The South African National Roads Agency SOC Ltd	Die figuur getoon The figure shown	<div data-bbox="1268 1064 1348 1209" data-label="Image"> </div> steeldie padreserwe voor van 'n gedeelte represents the road reserve of a portion van Nasionale Roete N2 of National Route Section	Vel Sheet 2 of 23 Plan P1189/19
---	---------------------------------------	---	------------------------------------

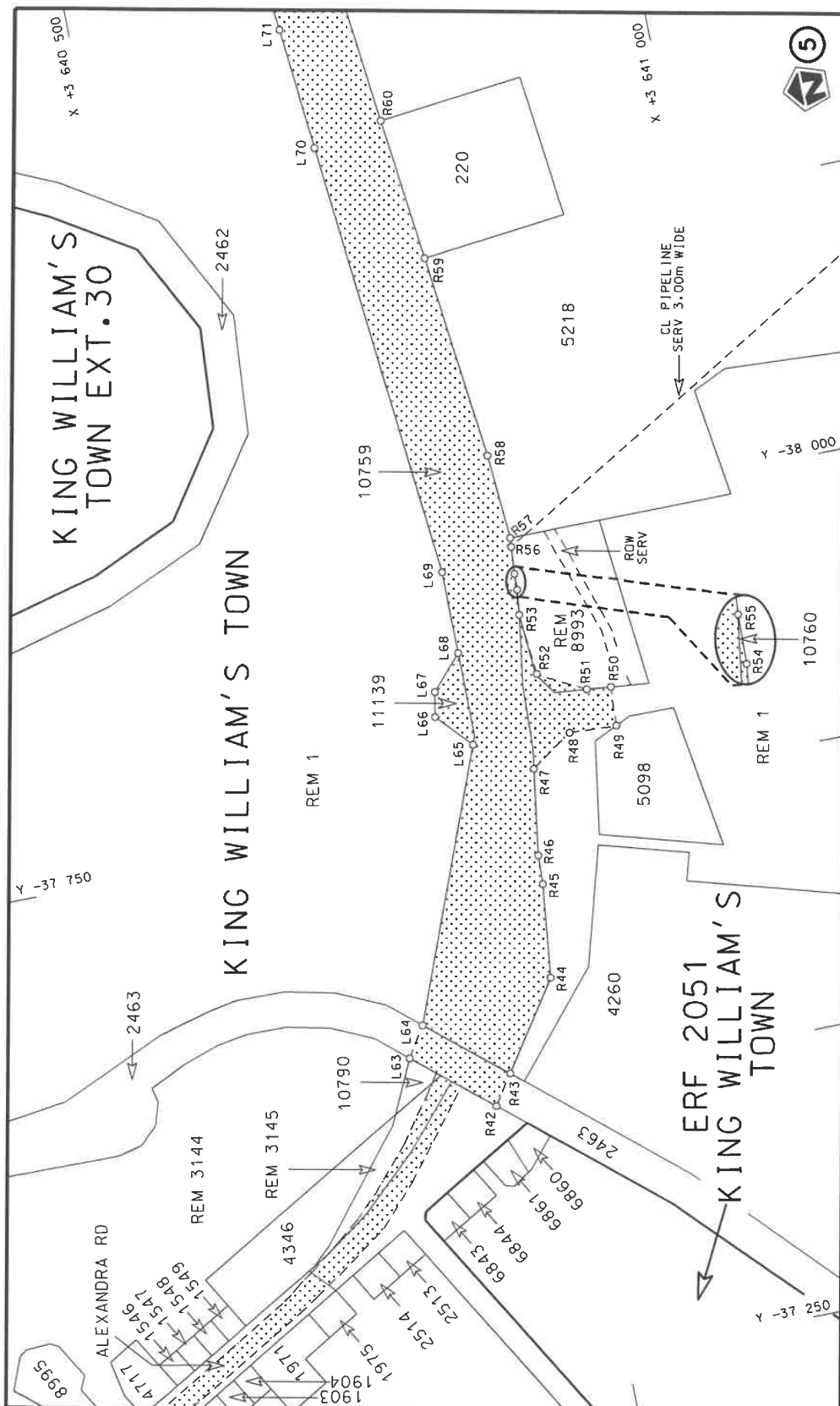



Die Suid Afrikaanse Nasionale Padagentskap MSB Bpk The South African National Roads Agency SOC Ltd	Die figuur getoon The figure shown		steldie padreserwe voor van 'n gedeelte represents the road reserve of a portion van Nasionale Roete N2 of National Route	Vel Sheet 3 of 23 Plan P1189/19
---	---------------------------------------	---	--	------------------------------------

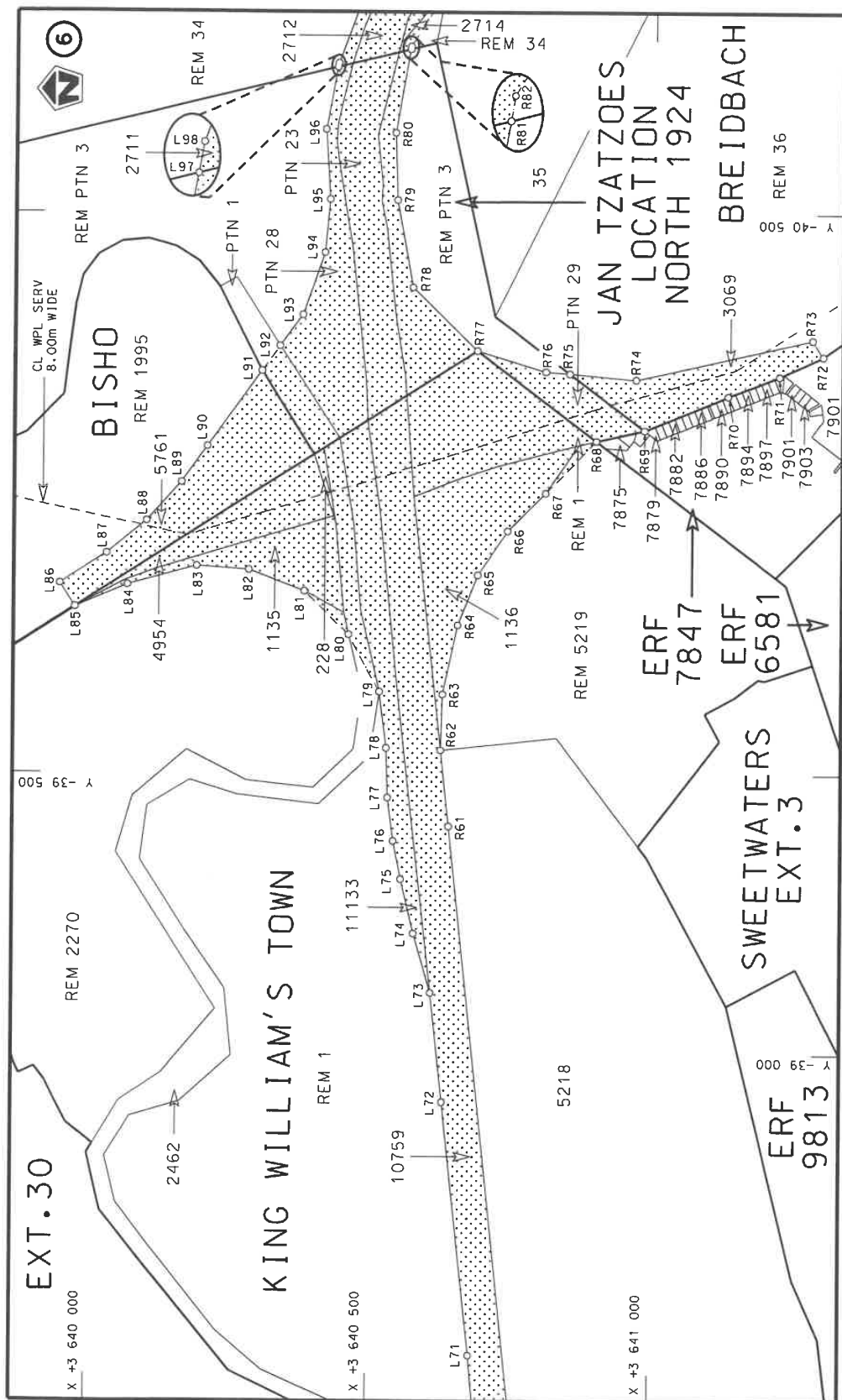


Die Suid Afrikaanse Nasionale Padagentskap MSB Bpk	Die figuur getoon		stel die padreserwe voor van 'n gedeelte represents the road reserve of a portion van Nasionale Roete N2 of National Route	Val Sheet 4 of 23
The South African National Roads Agency SOC Ltd	The figure shown			15 Plan P1189/19





Die Suid Afrikaanse Nasionale Padagentskap MSB Bpk	Die figuur getoon		steldie padreserwe voor van 'n gedeelte represents the road reserve of a portion van Nasionale Roete N2 of National Route	Vel Sheet	5 of	23
The South African National Roads Agency SOC Ltd	The figure shown			15	Plan	P1189/19



stel die padreserwe voor van 'n gedeelte  
represents the road reserve of a portion  
van Nasionale Roete N2  
of National Route



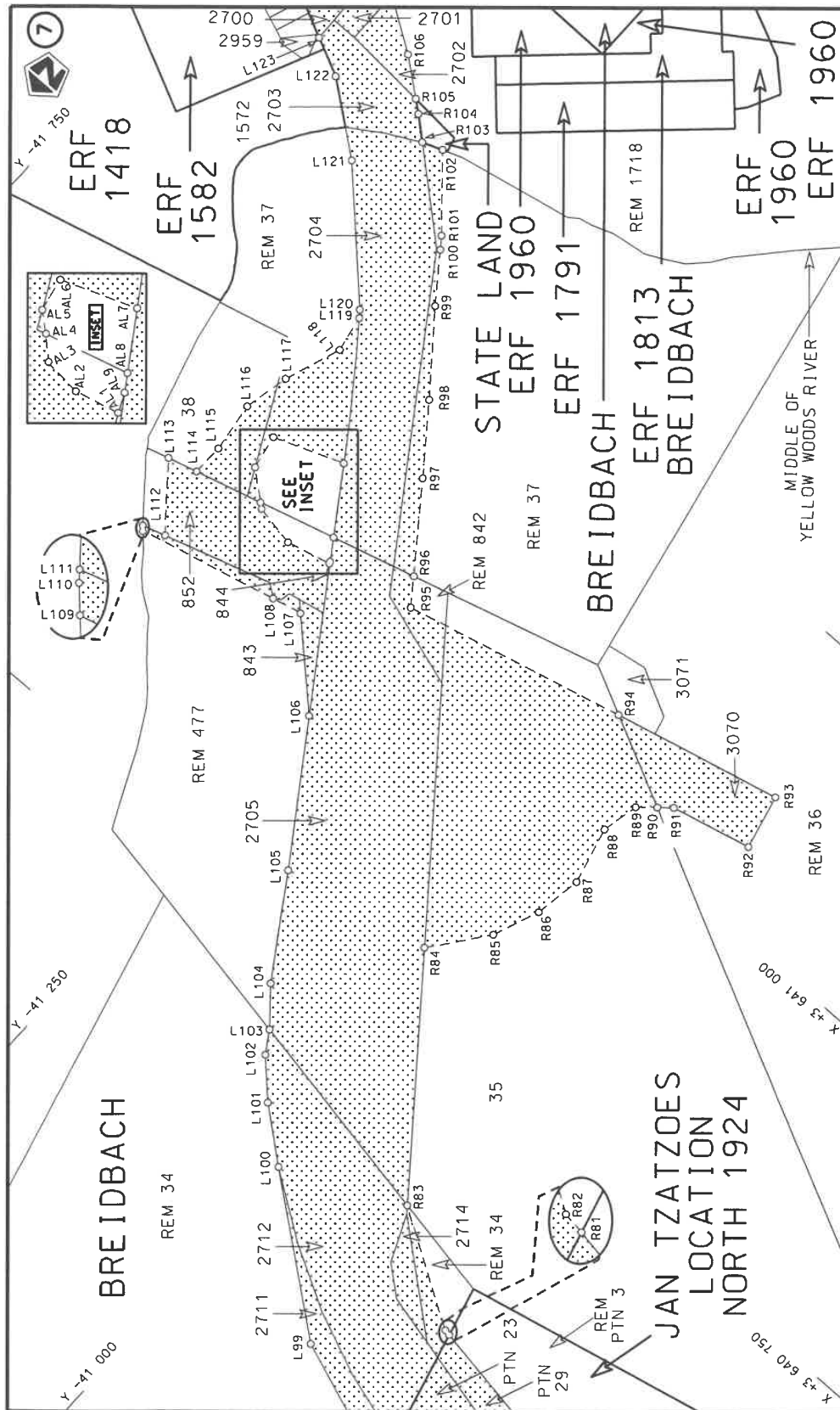
Die figuur getoon  
The figure shown

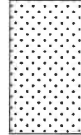
Die Suid Afrikaanse Nasionale Padagentskap MSB Bpk  
The South African National Roads Agency SOC Ltd

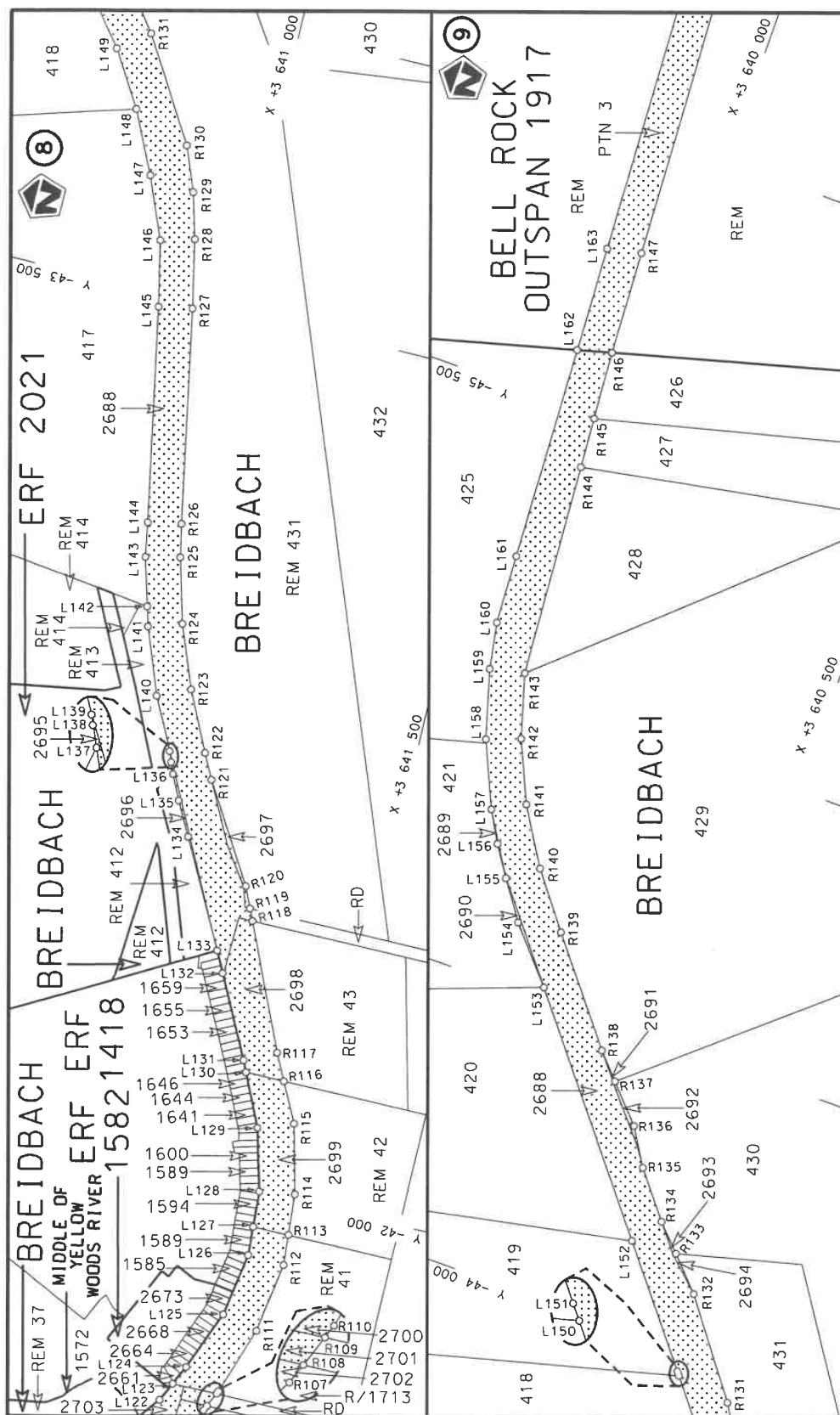
Vel  
Sheet 6 of 23  
Plan P1189/19

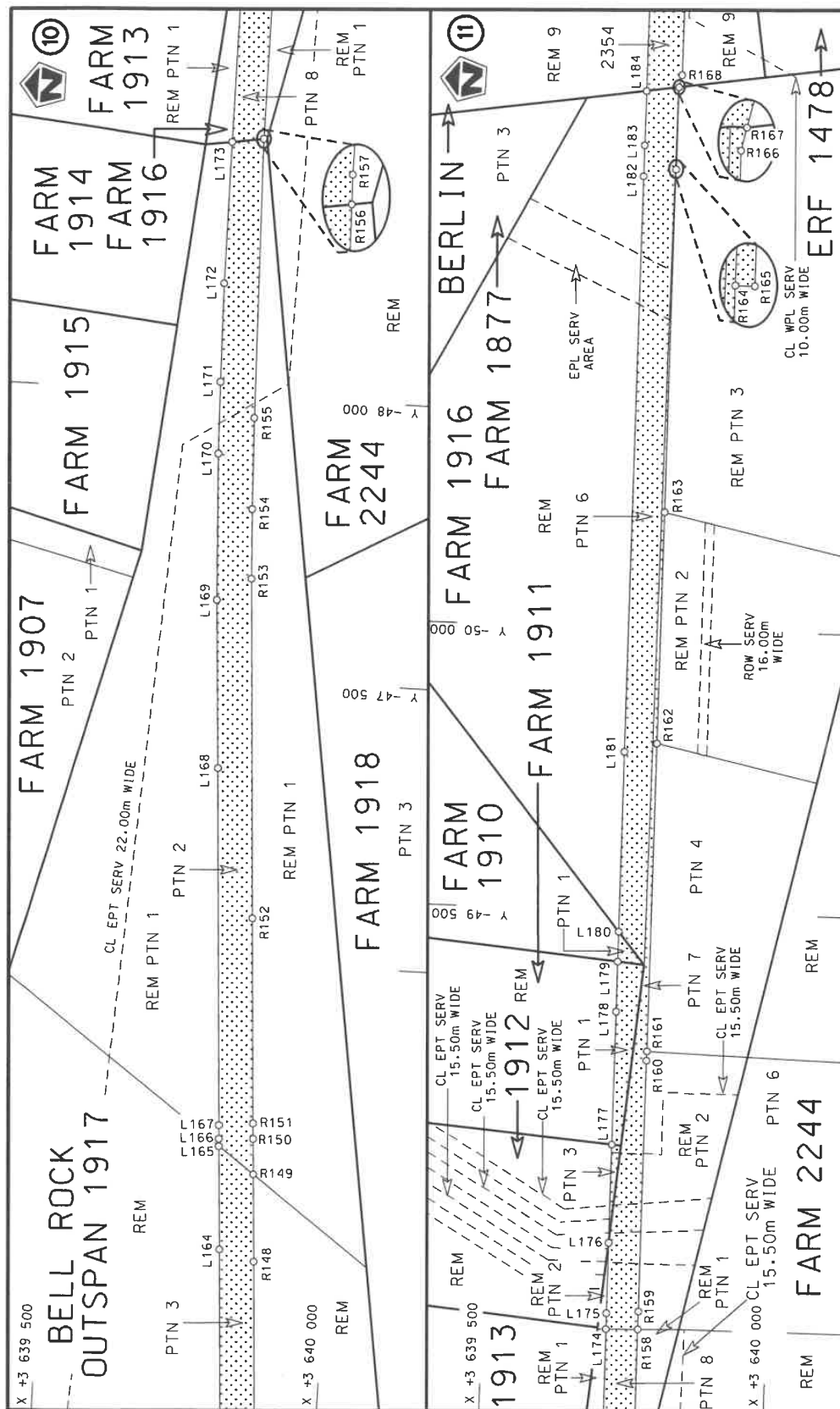
15  
Seksie  
Section




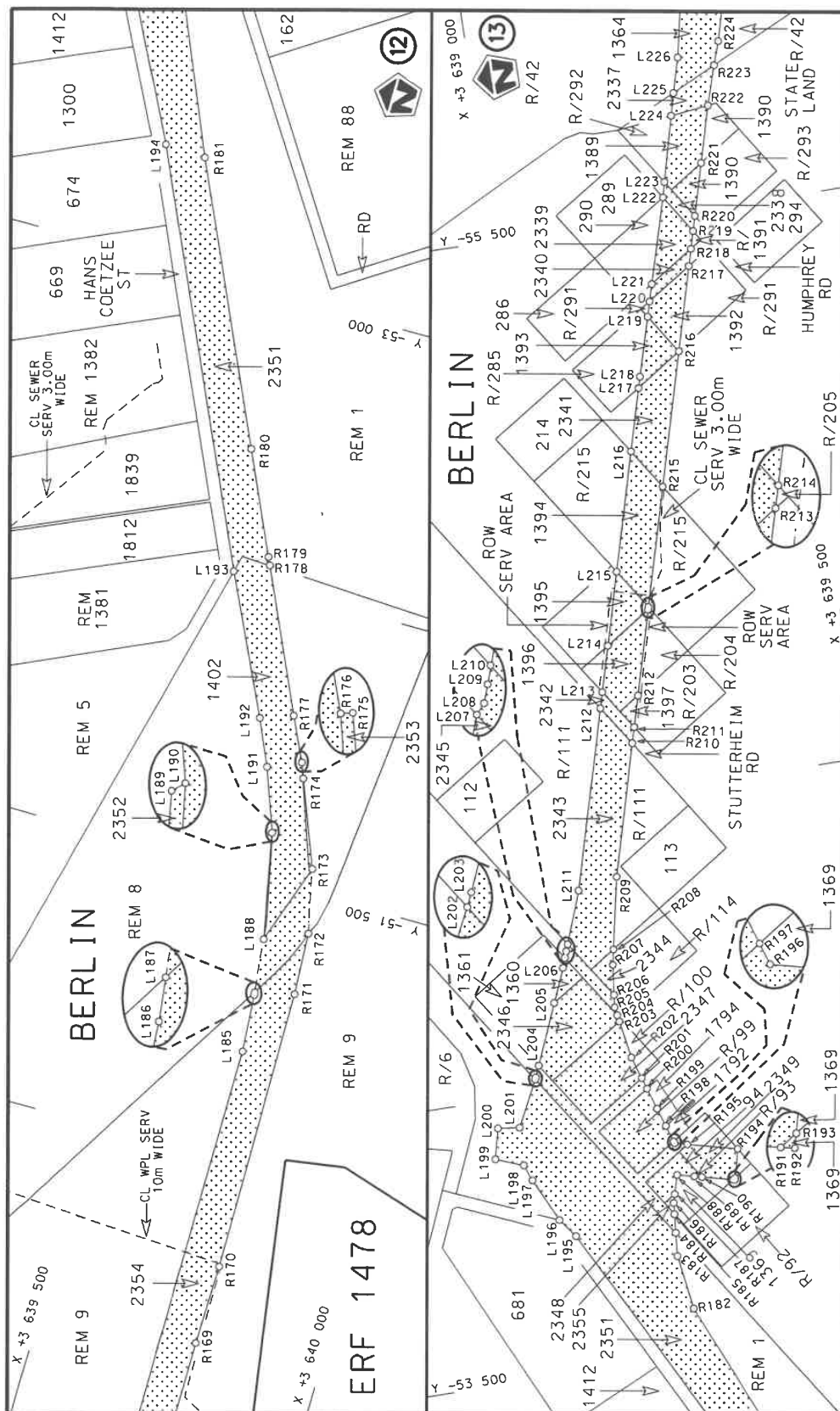



Die Suid Afrikaanse Nasionale Padagentskap MSB Bpk The South African National Roads Agency SOC Ltd	Die figuur getoon The figure shown		stel die padreserwe voor van 'n gedeelte represents the road reserve of a portion van Nasionale Roete N2 of National Route	Vel Sheet 7 of 23	15	N2	Sektie Section	Plan P1189/19
---	---------------------------------------	---	---	----------------------	----	----	-------------------	---------------



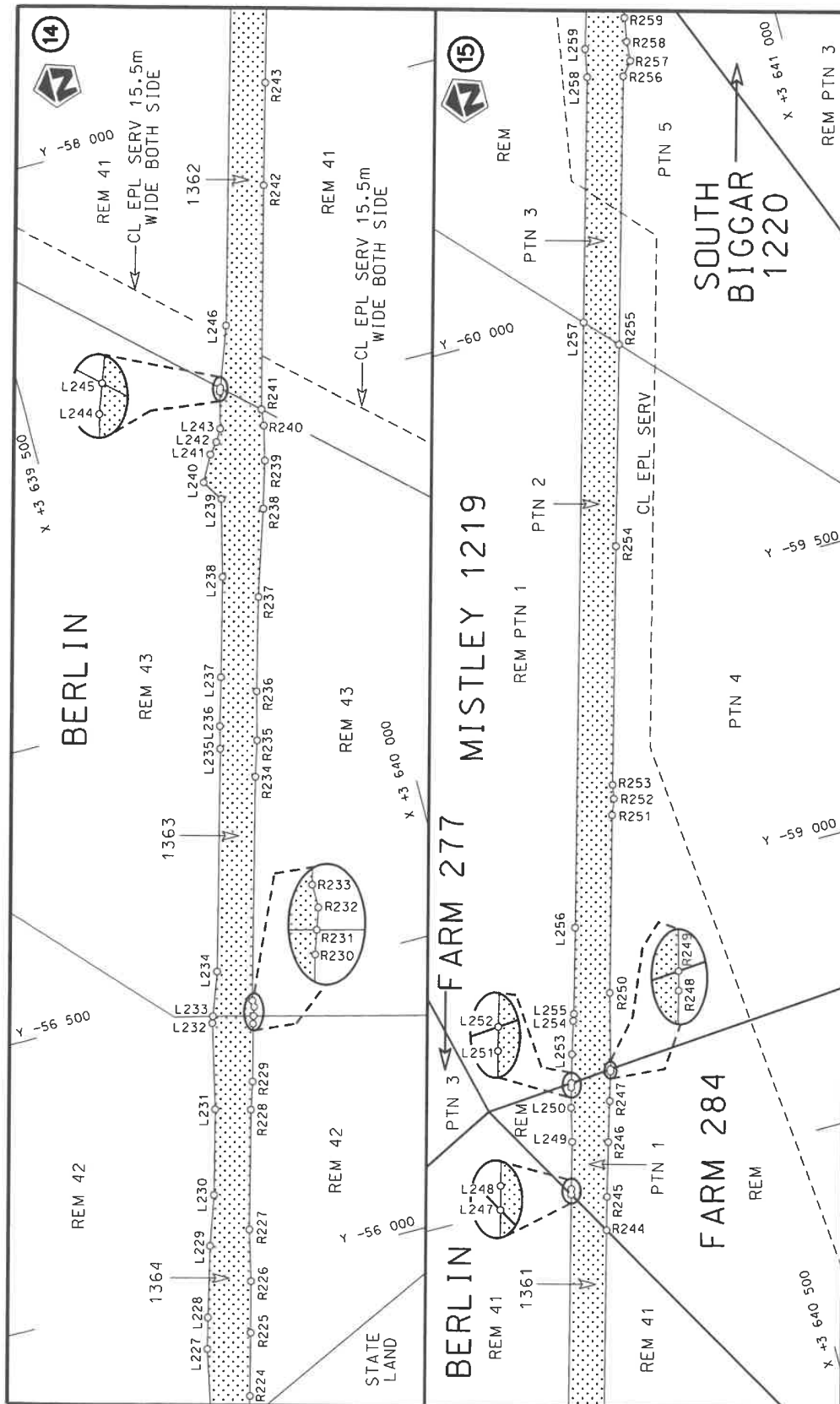



Die Suid Afrikaanse Nasionale Padagentskap MSB Bpk	Die figuur getoon		steldie padreserwe voor van 'n gedeelte represents the road reserve of a portion van Nasionale Roete N2 of National Route	Vel Sheet	9 of	23
The South African National Roads Agency SOC Ltd	The figure shown			15	Plan	P1189/19



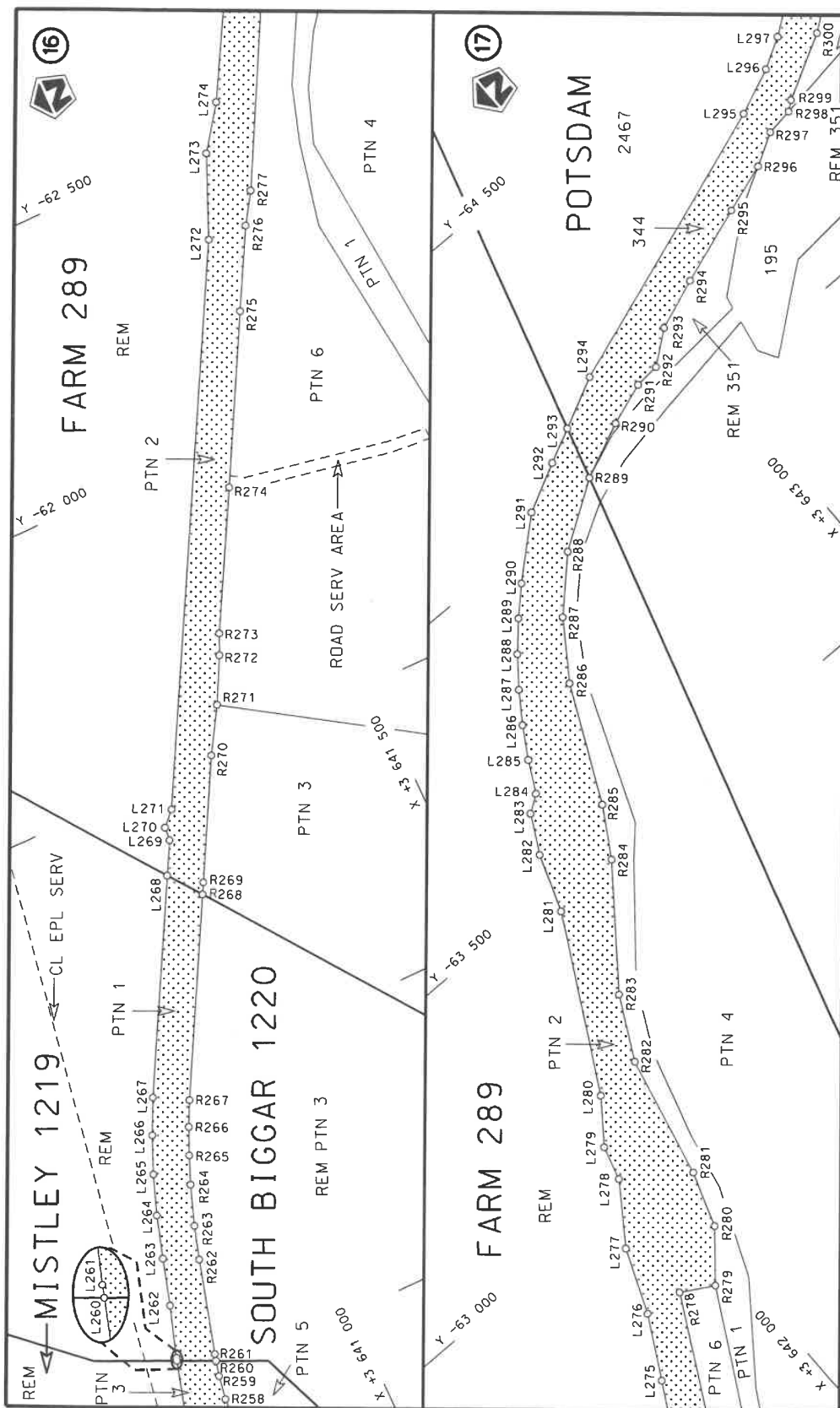
Die Suid Afrikaanse Nasionale Padagentskap MSB Bpk The South African National Roads Agency SOC Ltd	Die figuur getoon The figure shown		steldie padreserwe voor van 'n gedeelte represents the road reserve of a portion van Nasionale Roete N2 of National Route	15	10 of 23	Vel Sheet 10 of 23 Plan P1189/19
---	---------------------------------------	---	--	----	----------	-------------------------------------





Die Suid-Afrikaanse Nasionale Padagentskap MSB Bpk The South African National Roads Agency SOC Ltd	Die figuur getoon The figure shown		ste die padreserwe voor van 'n gedeelte represents the road reserve of a portion van Nasionale Roete N2 of National Route	15	Vel Sheet	11 of	23
					Plan	P1189/19	





Vel 12 van 23  
Sheet 12 of 23  
Plan P1189/19

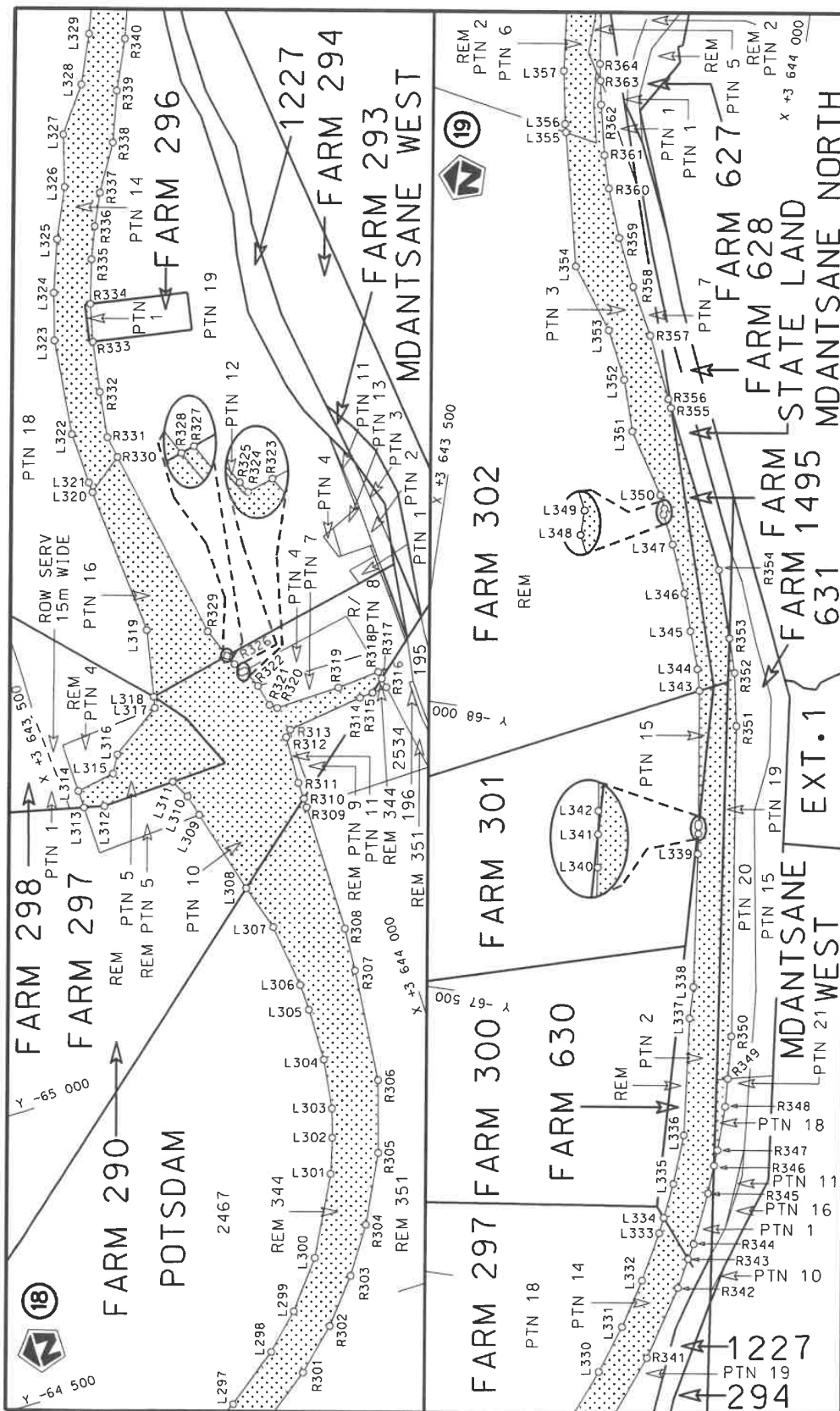
15  
Seksie  
Section


steldie padreserwe voor van 'n gedeelte  
represents the road reserve of a portion  
van Nasionale Roete N2  
of National Route

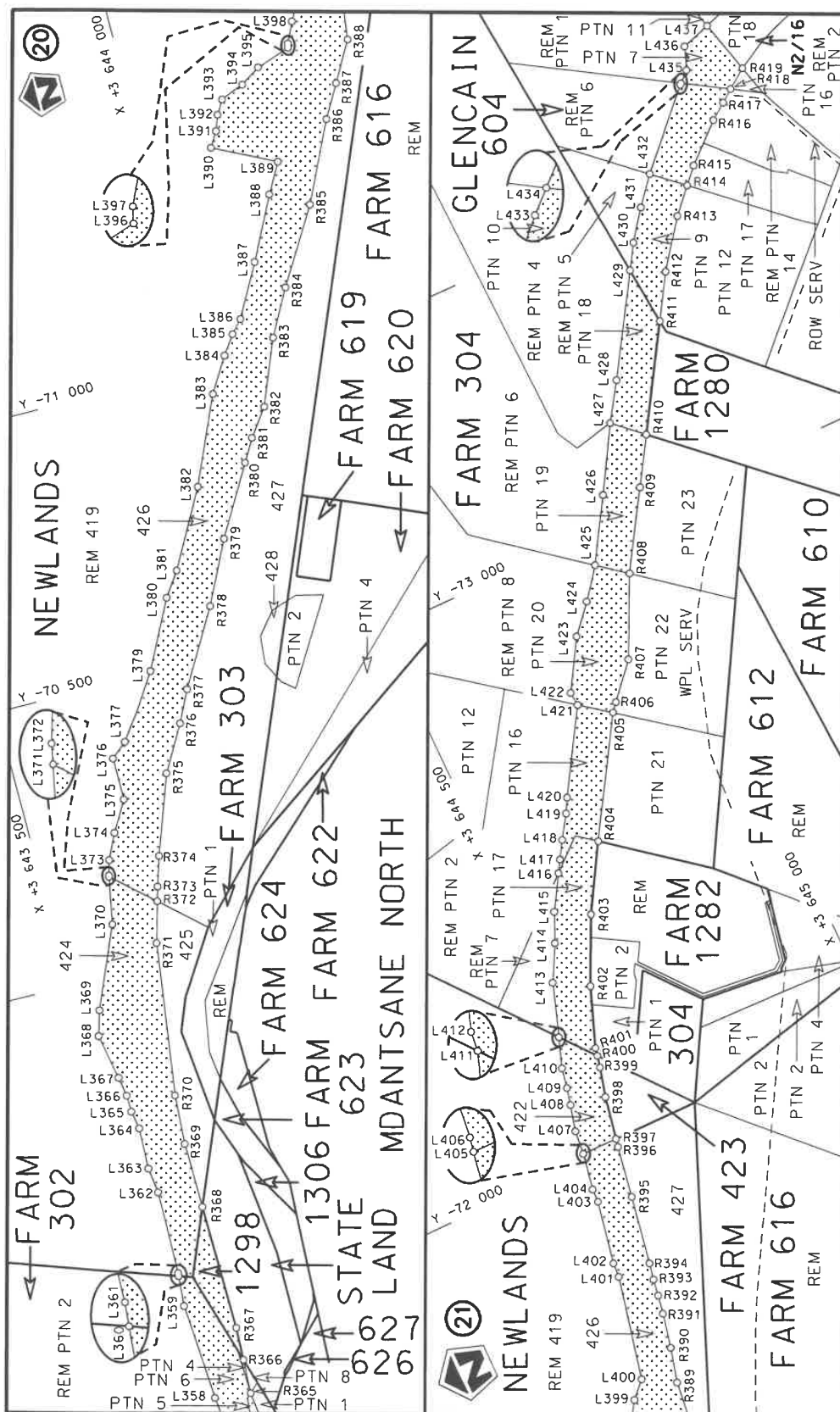



Die figuur getoon  
The figure shown

Die Suid Afrikaanse Nasionale Padagentskap MSB Bpk  
The South African National Roads Agency SOC Ltd



Die Suid Afrikaanse Nasionale Padagentskap MSB Bpk	Die figuur getoon		steldie padreserwe voor van 'n gedeelte represents the road reserve of a portion	Vel Sheet	13	van of	23
The South African National Roads Agency SOC Ltd	The figure shown		van Nasionale Roete of National Route	N2	Seksie Section	15	Plan



Die Suid Afrikaanse Nasionale Padagentskap MSB Bpk The South African National Roads Agency SOC Ltd	Die figuur getoon The figure shown	 steldie padreserwe voor van 'n gedeelte represents the road reserve of a portion van Nasionale Roete N2 of National Route	Vel Sheet 14 of 23 Plan P1189/19
---	---------------------------------------	---	--

PADRESERVE KOÖRDINATE / ROAD RESERVE CO-ORDINATES									
LINKERKANT/LEFT HAND SIDE					REGTERKANT/RIGHT HAND SIDE				
	Y		X	WG 27°		Y		X	
L1	-32 911.78	3	639 490.79		R1	-32 930.41	3	639 551.66	
L2	-32 997.91	3	639 430.67		R2	-33 001.82	3	639 495.40	
L3	-33 051.48	3	639 406.12		R3	-33 054.88	3	639 469.77	
L4	-33 092.48	3	639 393.66		R4	-33 138.66	3	639 441.71	
L5	-33 175.10	3	639 378.13		R5	-33 207.64	3	639 433.27	
L6	-33 522.44	3	639 365.79		R6	-33 347.69	3	639 429.71	
L7	-33 592.65	3	639 350.52		R7	-33 406.62	3	639 428.84	
L8	-33 684.22	3	639 326.46		R8	-33 584.02	3	639 417.62	
L9	-33 760.91	3	639 291.33		R9	-33 591.17	3	639 418.87	
L10	-33 889.50	3	639 217.26		R10	-33 644.69	3	639 417.68	
L11	-33 997.48	3	639 193.20		R11	-33 759.75	3	639 388.41	
L12	-34 032.77	3	639 179.44		R12	-33 784.51	3	639 372.70	
L13	-34 083.01	3	639 162.51		R13	-33 823.72	3	639 352.88	
L14	-34 149.00	3	639 134.24		R14	-33 943.14	3	639 293.10	
L15	-34 225.90	3	639 111.24		R15	-33 954.91	3	639 285.94	
L16	-34 304.17	3	639 095.99		R16	-34 017.36	3	639 243.42	
L17	-34 384.80	3	639 093.41		R17	-34 116.74	3	639 204.52	
L18	-34 464.07	3	639 100.23		R18	-34 204.26	3	639 189.57	
L19	-34 542.99	3	639 114.72		R19	-34 248.67	3	639 187.73	
L20	-34 656.44	3	639 154.57		R20	-34 344.82	3	639 190.02	
L21	-34 694.31	3	639 170.93		R21	-34 417.17	3	639 211.10	
L22	-34 752.01	3	639 193.91		R22	-34 513.77	3	639 243.18	
L23	-34 762.22	3	639 199.31		R23	-34 625.63	3	639 280.25	
L24	-34 813.13	3	639 223.89		R24	-34 727.64	3	639 294.00	
L25	-34 817.86	3	639 209.41		R25	-34 734.59	3	639 294.82	
L26	-34 846.36	3	639 212.37		R26	-34 765.89	3	639 298.53	
L27	-34 872.83	3	639 210.17		R27	-34 786.73	3	639 300.99	
L28	-34 907.41	3	639 199.89		R28	-34 873.19	3	639 348.76	
L29	-34 941.06	3	639 182.12		R29	-34 907.30	3	639 476.02	
L30	-34 945.20	3	639 169.47		R30	-35 033.39	3	639 501.21	
L31	-34 933.81	3	639 129.41		R31	-35 133.22	3	639 400.16	
L32	-34 907.57	3	639 064.58		R32	-35 256.36	3	639 449.61	
L33	-35 020.11	3	639 016.69		R33	-35 360.43	3	639 494.96	
L34	-35 070.02	3	639 140.08		R34	-35 364.77	3	639 496.30	
L35	-35 080.71	3	639 135.75		R35	-35 399.26	3	639 514.08	
L36	-35 086.11	3	639 160.75		R36	-35 430.58	3	639 538.39	
L37	-35 109.44	3	639 206.64		R37	-35 485.50	3	639 591.76	
L38	-35 141.56	3	639 248.83		R38	-35 805.11	3	639 600.00	
L39	-35 156.76	3	639 262.79		R39	-35 845.80	3	639 570.86	
L40	-35 206.32	3	639 292.18		R40	-35 868.87	3	639 554.36	
L41	-35 293.42	3	639 326.85		R41	-35 874.38	3	639 550.43	
L42	-35 315.83	3	639 342.50		R42	-37 488.47	3	640 681.53	
L43	-35 324.03	3	639 355.95		R43	-37 514.40	3	640 698.93	
L44	-35 428.96	3	639 397.55		R44	-37 590.88	3	640 750.72	
L45	-35 442.96	3	639 398.87		R45	-37 673.67	3	640 760.37	
L46	-35 502.14	3	639 477.42		R46	-37 699.32	3	640 761.37	
L47	-35 523.23	3	639 511.82		R47	-37 775.47	3	640 772.76	
L48	-35 572.50	3	639 534.23		R48	-37 801.01	3	640 810.39	
L49	-35 586.17	3	639 537.47		R49	-37 798.76	3	640 851.48	
L50	-35 603.98	3	639 540.63		R50	-37 833.22	3	640 853.47	
L51	-35 627.65	3	639 543.38		R51	-37 835.35	3	640 832.30	
					<div> <div>Vel</div> <div>15</div> <div>Van</div> <div>23</div> <div>Sheet</div> <div>of</div> <div>P1189/19</div> </div>				



PADRESERVE KOÖRDINATE / ROAD RESERVE CO-ORDINATES									
LINKERKANT/LEFT HAND SIDE					REGTERKANT/RIGHT HAND SIDE				
	Y		X	WG 27°		Y		X	
L52	-35 660.77	3	639	544.96	R52	-37 857.43	3	640	791.89
L53	-35 676.17	3	639	551.29	R53	-37 911.68	3	640	787.10
L54	-35 694.37	3	639	551.58	R54	-37 933.83	3	640	789.74
L55	-35 718.37	3	639	551.45	R55	-37 948.15	3	640	790.13
L56	-35 735.83	3	639	551.52	R56	-37 971.96	3	640	792.11
L57	-35 752.02	3	639	551.31	R57	-37 979.94	3	640	792.78
L58	-35 779.43	3	639	550.56	R58	-38 055.17	3	640	787.73
L59	-35 806.63	3	639	545.73	R59	-38 237.48	3	640	767.78
L60	-35 826.71	3	639	538.80	R60	-38 364.13	3	640	753.96
L61	-35 828.06	3	639	541.56	R61	-39 406.26	3	640	641.18
L62	-35 830.89	3	639	540.22	R62	-39 542.16	3	640	626.09
L63	-37 544.93	3	640	615.26	R63	-39 642.18	3	640	629.01
L64	-37 571.31	3	640	632.23	R64	-39 765.62	3	640	655.18
L65	-37 806.79	3	640	724.73	R65	-39 855.08	3	640	690.13
L66	-37 837.20	3	640	697.06	R66	-39 933.88	3	640	742.48
L67	-37 859.03	3	640	701.10	R67	-40 001.68	3	640	810.04
L68	-37 888.89	3	640	728.00	R68	-40 094.63	3	640	899.26
L69	-37 961.79	3	640	728.40	R69	-40 114.20	3	640	984.16
L70	-38 352.36	3	640	691.99	R70	-40 175.34	3	641	132.42
L71	-38 460.84	3	640	682.15	R71	-40 211.02	3	641	224.20
L72	-38 913.28	3	640	632.37	R72	-40 246.91	3	641	302.45
L73	-39 108.52	3	640	610.84	R73	-40 275.98	3	641	283.03
L74	-39 214.49	3	640	579.86	R74	-40 204.41	3	640	968.71
L75	-39 311.72	3	640	556.78	R75	-40 214.58	3	640	851.77
L76	-39 379.53	3	640	542.96	R76	-40 218.31	3	640	808.89
L77	-39 457.13	3	640	532.76	R77	-40 255.14	3	640	686.72
L78	-39 545.66	3	640	529.84	R78	-40 367.64	3	640	572.29
L79	-39 645.96	3	640	517.00	R79	-40 523.04	3	640	543.26
L80	-39 748.47	3	640	461.87	R80	-40 642.97	3	640	538.96
L81	-39 825.49	3	640	383.76	R81	-40 791.97	3	640	564.63
L82	-39 862.83	3	640	285.86	R82	-40 797.22	3	640	565.50
L83	-39 869.20	3	640	193.41	R83	-40 895.07	3	640	626.47
L84	-39 835.41	3	640	070.24	R84	-41 034.27	3	640	807.37
L85	-39 795.92	3	639	977.57	R85	-40 996.90	3	640	856.08
L86	-39 837.71	3	639	950.11	R86	-40 980.08	3	640	897.23
L87	-39 891.42	3	640	033.03	R87	-40 972.88	3	640	939.33
L88	-39 949.87	3	640	103.49	R88	-40 985.18	3	640	990.34
L89	-40 018.93	3	640	165.40	R89	-40 977.63	3	641	023.04
L90	-40 083.05	3	640	211.16	R90	-40 963.10	3	641	035.29
L91	-40 218.32	3	640	307.00	R91	-40 951.98	3	641	044.68
L92	-40 262.98	3	640	338.69	R92	-40 879.48	3	641	062.24
L93	-40 318.33	3	640	378.15	R93	-40 890.45	3	641	111.03
L94	-40 429.65	3	640	416.10	R94	-41 042.30	3	641	074.24
L95	-40 524.41	3	640	424.49	R95	-41 241.48	3	641	025.22
L96	-40 649.08	3	640	416.20	R96	-41 257.81	3	641	047.55
L97	-40 759.92	3	640	436.20	R97	-41 309.09	3	641	117.71
L98	-40 766.89	3	640	437.50	R98	-41 350.55	3	641	173.18
L99	-40 878.25	3	640	478.14	R99	-41 401.32	3	641	238.66
L100	-41 002.92	3	640	577.06	R100	-41 430.76	3	641	278.68
L101	-41 047.46	3	640	613.56	R101	-41 438.18	3	641	288.77
L102	-41 076.97	3	640	643.88	R102	-41 487.33	3	641	346.10
					<div> <div>Vel</div> <div>16</div> <div>Van</div> <div>23</div> <div>Sheet</div> <div>of</div> <div>P1189/19</div> </div>				



PADRESERWE KOÖRDINATE / ROAD RESERVE CO-ORDINATES									
LINKERKANT/LEFT HAND SIDE					REGTERKANT/RIGHT HAND SIDE				
	Y		X	WG 27°		Y		X	
L103	-41 089.03	3	640	663.09	R103	-41 505.25	3	641	339.44
L104	-41 115.19	3	640	694.32	R104	-41 524.18	3	641	355.92
L105	-41 169.72	3	640	779.52	R105	-41 534.79	3	641	364.45
L106	-41 245.69	3	640	894.00	R106	-41 565.68	3	641	389.30
L107	-41 311.87	3	640	957.50	R107	-41 601.49	3	641	412.43
L108	-41 337.97	3	640	950.90	R108	-41 610.41	3	641	416.46
L109	-41 463.39	3	640	920.79	R109	-41 635.15	3	641	427.64
L110	-41 465.24	3	640	922.78	R110	-41 639.92	3	641	429.79
L111	-41 466.16	3	640	923.92	R111	-41 759.66	3	641	468.58
L112	-41 445.83	3	640	930.14	R112	-41 884.11	3	641	487.06
L113	-41 488.66	3	640	983.41	R113	-41 937.56	3	641	482.57
L114	-41 462.32	3	640	990.72	R114	-42 009.96	3	641	476.49
L115	-41 461.14	3	641	018.84	R115	-42 130.90	3	641	445.62
L116	-41 466.80	3	641	063.53	R116	-42 199.72	3	641	410.90
L117	-41 457.62	3	641	103.90	R117	-42 246.09	3	641	387.51
L118	-41 438.68	3	641	154.34	R118	-42 461.93	3	641	290.81
L119	-41 444.37	3	641	186.69	R119	-42 482.33	3	641	281.67
L120	-41 448.82	3	641	192.60	R120	-42 519.12	3	641	265.19
L121	-41 541.08	3	641	286.45	R121	-42 687.23	3	641	162.80
L122	-41 600.79	3	641	332.58	R122	-42 730.41	3	641	140.80
L123	-41 634.31	3	641	348.56	R123	-42 833.43	3	641	090.68
L124	-41 668.85	3	641	365.01	R124	-42 942.63	3	641	048.64
L125	-41 774.24	3	641	405.54	R125	-43 055.57	3	641	017.45
L126	-41 886.40	3	641	423.28	R126	-43 113.43	3	641	005.50
L127	-41 937.10	3	641	419.79	R127	-43 486.84	3	640	934.16
L128	-41 999.95	3	641	415.46	R128	-43 606.17	3	640	909.16
L129	-42 108.73	3	641	385.62	R129	-43 685.98	3	640	886.72
L130	-42 199.53	3	641	343.18	R130	-43 763.34	3	640	856.49
L131	-42 219.08	3	641	334.05	R131	-43 939.79	3	640	748.24
L132	-42 356.86	3	641	263.86	R132	-44 100.47	3	640	627.05
L133	-42 396.47	3	641	243.67	R133	-44 156.67	3	640	573.14
L134	-42 579.96	3	641	146.87	R134	-44 201.29	3	640	530.33
L135	-42 638.16	3	641	115.77	R135	-44 279.74	3	640	467.05
L136	-42 681.06	3	641	094.74	R136	-44 344.10	3	640	427.52
L137	-42 700.62	3	641	086.82	R137	-44 406.84	3	640	369.46
L138	-42 717.89	3	641	079.82	R138	-44 450.50	3	640	329.29
L139	-42 718.94	3	641	079.40	R139	-44 622.25	3	640	190.72
L140	-42 808.36	3	641	034.00	R140	-44 715.49	3	640	117.95
L141	-42 923.35	3	640	990.26	R141	-44 814.00	3	640	056.77
L142	-42 957.41	3	640	980.65	R142	-44 919.69	3	640	009.05
L143	-43 041.71	3	640	957.04	R143	-45 030.79	3	639	975.74
L144	-43 101.83	3	640	946.60	R144	-45 406.14	3	639	944.49
L145	-43 475.56	3	640	875.25	R145	-45 494.43	3	639	937.16
L146	-43 590.22	3	640	850.24	R146	-45 614.02	3	639	927.20
L147	-43 697.16	3	640	806.02	R147	-45 796.31	3	639	915.65
L148	-43 804.55	3	640	754.37	R148	-46 470.54	3	639	873.94
L149	-43 900.13	3	640	695.50	R149	-46 624.75	3	639	864.16
L150	-43 955.49	3	640	651.52	R150	-46 687.46	3	639	860.18
L151	-43 961.92	3	640	646.52	R151	-46 714.88	3	639	858.37
L152	-44 152.02	3	640	493.07	R152	-47 077.48	3	639	836.15
L153	-44 520.54	3	640	195.78	R153	-47 677.42	3	639	799.19
					Vel	17	Van	23	P1189/19
					Sheet		of		

PADRESERWE KOÖRDINATE / ROAD RESERVE CO-ORDINATES									
LINKERKANT/LEFT HAND SIDE					REGTERKANT/RIGHT HAND SIDE				
	Y		X	WG 27°		Y		X	
L154	-44 612.90	3	640 114.04		R154	-47 800.40	3	639 793.35	
L155	-44 679.41	3	640 067.61		R155	-47 961.58	3	639 787.18	
L156	-44 731.32	3	640 033.07		R156	-48 454.39	3	639 774.89	
L157	-44 784.80	3	640 002.06		R157	-48 454.80	3	639 774.88	
L158	-44 897.95	3	639 951.04		R158	-48 758.90	3	639 774.84	
L159	-45 016.93	3	639 915.34		R159	-48 790.37	3	639 774.84	
L160	-45 098.19	3	639 899.34		R160	-49 235.37	3	639 774.37	
L161	-45 219.57	3	639 891.60		R161	-49 251.87	3	639 774.76	
L162	-45 597.76	3	639 868.08		R162	-49 797.28	3	639 774.32	
L163	-45 783.71	3	639 856.55		R163	-50 206.63	3	639 774.24	
L164	-46 488.51	3	639 812.93		R164	-50 812.64	3	639 773.10	
L165	-46 670.88	3	639 801.26		R165	-50 812.64	3	639 773.73	
L166	-46 684.08	3	639 800.41		R166	-50 957.41	3	639 773.32	
L167	-46 707.98	3	639 799.19		R167	-50 957.73	3	639 773.39	
L168	-47 338.88	3	639 760.04		R168	-50 979.15	3	639 778.45	
L169	-47 636.61	3	639 741.04		R169	-51 178.22	3	639 778.47	
L170	-47 894.77	3	639 728.28		R170	-51 319.34	3	639 780.74	
L171	-48 021.48	3	639 724.40		R171	-51 818.94	3	639 776.15	
L172	-48 195.89	3	639 720.21		R172	-51 928.60	3	639 770.34	
L173	-48 445.80	3	639 719.65		R173	-52 040.40	3	639 745.92	
L174	-48 757.43	3	639 718.94		R174	-52 189.89	3	639 687.03	
L175	-48 785.74	3	639 718.88		R175	-52 216.33	3	639 677.04	
L176	-48 910.48	3	639 718.75		R176	-52 216.24	3	639 676.78	
L177	-49 084.85	3	639 718.58		R177	-52 291.97	3	639 640.54	
L178	-49 320.37	3	639 718.34		R178	-52 535.80	3	639 527.65	
L179	-49 409.09	3	639 718.26		R179	-52 549.56	3	639 521.26	
L180	-49 462.00	3	639 718.22		R180	-52 724.84	3	639 440.15	
L181	-49 780.64	3	639 717.95		R181	-53 196.79	3	639 221.13	
L182	-50 798.60	3	639 716.75		R182	-53 583.42	3	639 054.66	
L183	-50 853.44	3	639 716.83		R183	-53 679.44	3	639 039.89	
L184	-50 949.35	3	639 716.73		R184	-53 720.66	3	639 043.24	
L185	-51 696.69	3	639 715.94		R185	-53 753.61	3	639 046.10	
L186	-51 798.18	3	639 708.39		R186	-53 773.55	3	639 047.86	
L187	-51 803.10	3	639 707.77		R187	-53 788.51	3	639 052.06	
L188	-51 897.66	3	639 697.55		R188	-53 821.55	3	639 061.39	
L189	-52 082.58	3	639 660.27		R189	-53 814.31	3	639 091.34	
L190	-52 082.89	3	639 660.55		R190	-53 811.12	3	639 104.52	
L191	-52 192.30	3	639 620.16		R191	-53 798.12	3	639 158.31	
L192	-52 271.84	3	639 584.38		R192	-53 797.47	3	639 161.37	
L193	-52 508.69	3	639 469.83		R193	-53 800.66	3	639 162.17	
L194	-53 200.33	3	639 149.39		R194	-53 850.78	3	639 174.79	
L195	-53 741.56	3	638 869.58		R195	-53 872.04	3	639 087.62	
L196	-53 774.06	3	638 845.58		R196	-53 877.37	3	639 065.81	
L197	-53 850.53	3	638 809.79		R197	-53 881.06	3	639 064.60	
L198	-53 878.98	3	638 798.82		R198	-53 910.11	3	639 055.14	
L199	-53 897.21	3	638 751.12		R199	-53 942.64	3	639 044.56	
L200	-53 950.57	3	638 763.95		R200	-53 980.17	3	639 032.34	
L201	-53 946.07	3	638 801.74		R201	-54 000.12	3	639 025.96	
L202	-54 026.23	3	638 841.68		R202	-54 039.04	3	639 013.51	
L203	-54 029.58	3	638 843.35		R203	-54 105.06	3	639 002.52	
L204	-54 049.33	3	638 851.54		R204	-54 116.66	3	639 000.59	
					Vel Sheet	18	Van of	23	P1189/19

PADRESERVE KOÖRDINATE / ROAD RESERVE CO-ORDINATES									
LINKERKANT/LEFT HAND SIDE					REGTERKANT/RIGHT HAND SIDE				
	Y		X	WG 27°		Y		X	
L205	-54 155.00	3	638	895.35	R205	-54 131.32	3	638	998.15
L206	-54 213.96	3	638	919.74	R206	-54 153.08	3	639	000.59
L207	-54 230.56	3	638	925.85	R207	-54 205.87	3	639	006.52
L208	-54 231.04	3	638	926.27	R208	-54 232.50	3	639	011.87
L209	-54 242.00	3	638	930.04	R209	-54 358.66	3	639	037.20
L210	-54 253.94	3	638	934.40	R210	-54 587.72	3	639	100.34
L211	-54 344.89	3	638	967.65	R211	-54 615.38	3	639	107.97
L212	-54 657.32	3	639	054.64	R212	-54 669.37	3	639	122.96
L213	-54 684.93	3	639	062.35	R213	-54 816.51	3	639	163.88
L214	-54 764.35	3	639	084.36	R214	-54 821.41	3	639	165.25
L215	-54 891.06	3	639	119.54	R215	-55 027.45	3	639	222.58
L216	-55 097.21	3	639	176.76	R216	-55 258.85	3	639	286.94
L217	-55 205.50	3	639	206.86	R217	-55 404.78	3	639	327.57
L218	-55 211.11	3	639	208.47	R218	-55 434.20	3	639	335.74
L219	-55 327.56	3	639	241.89	R219	-55 464.71	3	639	344.21
L220	-55 353.64	3	639	249.37	R220	-55 490.54	3	639	351.38
L221	-55 383.29	3	639	257.89	R221	-55 581.21	3	639	376.55
L222	-55 531.44	3	639	300.55	R222	-55 679.28	3	639	403.89
L223	-55 557.84	3	639	307.32	R223	-55 747.72	3	639	425.20
L224	-55 671.47	3	639	336.58	R224	-55 788.65	3	639	438.96
L225	-55 710.56	3	639	346.60	R225	-55 897.02	3	639	468.73
L226	-55 771.01	3	639	363.34	R226	-55 985.60	3	639	492.78
L227	-55 888.67	3	639	387.50	R227	-56 075.12	3	639	513.40
L228	-55 942.31	3	639	402.68	R228	-56 280.47	3	639	570.31
L229	-56 064.62	3	639	439.08	R229	-56 327.92	3	639	585.83
L230	-56 150.26	3	639	468.82	R230	-56 427.24	3	639	612.73
L231	-56 297.08	3	639	509.61	R231	-56 440.27	3	639	617.12
L232	-56 446.53	3	639	543.71	R232	-56 455.59	3	639	622.27
L233	-56 458.09	3	639	547.90	R233	-56 467.35	3	639	622.16
L234	-56 532.93	3	639	575.06	R234	-56 850.46	3	639	728.49
L235	-56 914.28	3	639	680.93	R235	-56 912.17	3	639	747.83
L236	-56 953.04	3	639	690.64	R236	-56 996.53	3	639	769.09
L237	-57 036.97	3	639	714.58	R237	-57 157.94	3	639	814.80
L238	-57 208.14	3	639	762.59	R238	-57 306.94	3	639	862.86
L239	-57 342.45	3	639	795.73	R239	-57 388.72	3	639	887.27
L240	-57 378.78	3	639	773.10	R240	-57 449.43	3	639	901.27
L241	-57 423.81	3	639	797.15	R241	-57 478.05	3	639	904.74
L242	-57 442.35	3	639	812.87	R242	-57 861.37	3	640	009.18
L243	-57 463.46	3	639	825.22	R243	-58 036.49	3	640	057.76
L244	-57 526.97	3	639	841.57	R244	-58 421.66	3	640	164.71
L245	-57 533.48	3	639	843.94	R245	-58 478.70	3	640	180.55
L246	-57 637.68	3	639	881.87	R246	-58 572.11	3	640	207.44
L247	-58 498.60	3	640	120.48	R247	-58 642.22	3	640	228.58
L248	-58 508.38	3	640	123.19	R248	-58 692.49	3	640	243.13
L249	-58 588.85	3	640	145.65	R249	-58 696.70	3	640	244.20
L250	-58 648.24	3	640	159.68	R250	-58 828.14	3	640	277.52
L251	-58 682.71	3	640	169.10	R251	-59 132.37	3	640	361.93
L252	-58 690.67	3	640	171.35	R252	-59 159.75	3	640	372.19
L253	-58 739.93	3	640	185.27	R253	-59 184.18	3	640	376.39
L254	-58 796.56	3	640	202.48	R254	-59 592.21	3	640	489.60
L255	-58 808.38	3	640	206.64	R255	-59 936.88	3	640	585.47
					<div> <div>Vel</div> <div>19</div> <div>Van</div> <div>23</div> <div>of</div> </div> <div>P1189/19</div>				

PADRESERWE KOÖRDINATE / ROAD RESERVE CO-ORDINATES						
LINKERKANT/LEFT HAND SIDE				REGTERKANT/RIGHT HAND SIDE		
	Y	X	WG 27°		Y	X
L256	-58 955.72	3 640 247.82		R256	-60 394.72	3 640 712.83
L257	-59 990.87	3 640 534.79		R257	-60 418.01	3 640 731.82
L258	-60 409.64	3 640 650.88		R258	-60 452.39	3 640 733.95
L259	-60 458.72	3 640 659.64		R259	-60 494.52	3 640 740.87
L260	-60 549.58	3 640 685.87		R260	-60 521.12	3 640 747.62
L261	-60 555.21	3 640 687.49		R261	-60 533.22	3 640 750.69
L262	-60 644.13	3 640 715.91		R262	-60 697.15	3 640 796.29
L263	-60 725.43	3 640 739.54		R263	-60 755.10	3 640 813.88
L264	-60 799.07	3 640 762.16		R264	-60 824.32	3 640 838.23
L265	-60 868.01	3 640 787.45		R265	-60 872.54	3 640 857.95
L266	-60 931.87	3 640 814.58		R266	-60 918.98	3 640 878.51
L267	-60 992.60	3 640 843.80		R267	-60 961.74	3 640 899.53
L268	-61 340.31	3 641 031.34		R268	-61 284.19	3 641 073.19
L269	-61 395.85	3 641 061.33		R269	-61 303.22	3 641 083.44
L270	-61 419.53	3 641 063.22		R270	-61 502.14	3 641 190.48
L271	-61 444.02	3 641 087.44		R271	-61 579.47	3 641 236.92
L272	-62 335.03	3 641 568.68		R272	-61 657.71	3 641 277.57
L273	-62 475.68	3 641 628.67		R273	-61 693.22	3 641 293.61
L274	-62 551.17	3 641 681.98		R274	-61 921.30	3 641 417.76
L275	-62 710.66	3 641 770.75		R275	-62 197.26	3 641 565.70
L276	-62 817.63	3 641 829.15		R276	-62 331.05	3 641 638.03
L277	-62 930.96	3 641 874.72		R277	-62 383.74	3 641 672.08
L278	-63 032.87	3 641 945.39		R278	-62 810.10	3 641 896.90
L279	-63 092.87	3 641 962.08		R279	-62 778.03	3 641 953.64
L280	-63 166.61	3 642 017.14		R280	-62 859.48	3 642 021.27
L281	-63 461.52	3 642 176.33		R281	-62 956.84	3 642 053.75
L282	-63 562.04	3 642 212.67		R282	-63 173.59	3 642 102.07
L283	-63 628.13	3 642 248.02		R283	-63 282.75	3 642 158.31
L284	-63 649.11	3 642 278.20		R284	-63 473.78	3 642 303.74
L285	-63 703.29	3 642 307.00		R285	-63 558.85	3 642 354.52
L286	-63 756.91	3 642 339.12		R286	-63 760.03	3 642 449.98
L287	-63 809.27	3 642 374.86		R287	-63 857.11	3 642 516.76
L288	-63 858.76	3 642 413.75		R288	-63 940.44	3 642 599.12
L289	-63 905.91	3 642 456.30		R289	-64 015.59	3 642 712.96
L290	-63 949.58	3 642 501.00		R290	-64 058.99	3 642 810.71
L291	-64 034.42	3 642 595.33		R291	-64 085.41	3 642 885.08
L292	-64 077.96	3 642 680.18		R292	-64 089.20	3 642 929.63
L293	-64 107.38	3 642 739.73		R293	-64 132.74	3 642 985.72
L294	-64 151.37	3 642 828.65		R294	-64 166.72	3 643 075.03
L295	-64 330.22	3 643 339.04		R295	-64 213.84	3 643 211.55
L296	-64 364.67	3 643 419.89		R296	-64 242.79	3 643 297.95
L297	-64 395.08	3 643 472.69		R297	-64 274.51	3 643 353.74
L298	-64 463.60	3 643 564.16		R298	-64 281.51	3 643 402.46
L299	-64 520.88	3 643 623.26		R299	-64 294.09	3 643 418.56
L300	-64 600.20	3 643 686.20		R300	-64 354.93	3 643 529.86
L301	-64 734.09	3 643 756.59		R301	-64 412.06	3 643 606.52
L302	-64 794.30	3 643 778.41		R302	-64 477.44	3 643 675.12
L303	-64 844.20	3 643 793.10		R303	-64 551.42	3 643 736.06
L304	-64 931.19	3 643 805.12		R304	-64 629.91	3 643 788.37
L305	-65 023.15	3 643 806.70		R305	-64 745.19	3 643 846.92
L306	-65 069.33	3 643 805.44		R306	-64 868.18	3 643 884.75
				Vel Sheet	20 Van of	23 P1189/19



PADRESERVE KOÖRDINATE / ROAD RESERVE CO-ORDINATES									
LINKERKANT/LEFT HAND SIDE					REGTERKANT/RIGHT HAND SIDE				
	Y		X	WG 27°		Y		X	
L307	-65 181.48	3	643	790.63	R307	-65 065.73	3	643	903.96
L308	-65 261.25	3	643	765.58	R308	-65 141.93	3	643	909.11
L309	-65 409.88	3	643	724.49	R309	-65 374.24	3	643	909.35
L310	-65 447.28	3	643	714.75	R310	-65 382.76	3	643	909.22
L311	-65 479.76	3	643	697.23	R311	-65 412.25	3	643	908.41
L312	-65 474.54	3	643	570.01	R312	-65 495.64	3	643	911.89
L313	-65 482.71	3	643	534.96	R313	-65 506.36	3	643	922.76
L314	-65 513.33	3	643	534.10	R314	-65 524.21	3	644	055.13
L315	-65 524.99	3	643	601.45	R315	-65 526.21	3	644	079.00
L316	-65 554.85	3	643	618.81	R316	-65 528.39	3	644	104.98
L317	-65 614.14	3	643	705.79	R317	-65 545.59	3	644	101.80
L318	-65 633.77	3	643	709.77	R318	-65 558.59	3	644	099.42
L319	-65 749.98	3	643	733.37	R319	-65 552.41	3	644	024.69
L320	-66 014.81	3	643	714.43	R320	-65 549.38	3	643	912.24
L321	-66 021.04	3	643	713.98	R321	-65 559.00	3	643	900.77
L322	-66 119.17	3	643	710.49	R322	-65 597.06	3	643	891.67
L323	-66 286.70	3	643	730.11	R323	-65 629.42	3	643	877.25
L324	-66 367.47	3	643	753.98	R324	-65 628.22	3	643	871.32
L325	-66 455.94	3	643	787.47	R325	-65 629.81	3	643	870.61
L326	-66 540.19	3	643	827.37	R326	-65 646.05	3	643	863.38
L327	-66 629.45	3	643	852.63	R327	-65 664.22	3	643	855.97
L328	-66 704.09	3	643	908.79	R328	-65 664.04	3	643	855.12
L329	-66 785.35	3	643	948.31	R329	-65 715.41	3	643	835.47
L330	-66 867.93	3	643	982.31	R330	-66 018.86	3	643	782.08
L331	-66 952.54	3	644	010.91	R331	-66 057.23	3	643	775.33
L332	-67 039.10	3	644	033.97	R332	-66 175.92	3	643	779.58
L333	-67 126.65	3	644	051.33	R333	-66 264.23	3	643	794.05
L334	-67 155.01	3	644	055.20	R334	-66 329.48	3	643	809.61
L335	-67 216.69	3	644	063.11	R335	-66 404.00	3	643	834.80
L336	-67 304.67	3	644	068.97	R336	-66 458.18	3	643	857.73
L337	-67 511.22	3	644	049.23	R337	-66 512.23	3	643	884.27
L338	-67 567.04	3	644	047.71	R338	-66 590.31	3	643	931.85
L339	-67 801.09	3	644	021.59	R339	-66 675.59	3	643	965.49
L340	-67 836.83	3	644	016.75	R340	-66 759.02	3	644	005.91
L341	-67 849.47	3	644	015.06	R341	-66 904.39	3	644	062.22
L342	-67 854.58	3	644	014.37	R342	-67 035.30	3	644	097.83
L343	-68 087.29	3	643	981.66	R343	-67 088.71	3	644	108.56
L344	-68 124.68	3	643	972.76	R344	-67 116.22	3	644	113.98
L345	-68 189.23	3	643	950.86	R345	-67 209.11	3	644	126.12
L346	-68 253.90	3	643	930.49	R346	-67 259.03	3	644	129.52
L347	-68 336.41	3	643	897.28	R347	-67 287.05	3	644	131.42
L348	-68 386.21	3	643	873.85	R348	-67 365.35	3	644	133.62
L349	-68 397.15	3	643	874.03	R349	-67 414.93	3	644	130.64
L350	-68 419.80	3	643	863.34	R350	-67 490.01	3	644	126.14
L351	-68 523.92	3	643	798.25	R351	-68 034.84	3	644	055.15
L352	-68 612.14	3	643	770.92	R352	-68 127.49	3	644	038.49
L353	-68 694.62	3	643	731.60	R353	-68 186.69	3	644	020.43
L354	-68 798.11	3	643	657.61	R354	-68 303.76	3	643	984.63
L355	-69 029.60	3	643	605.22	R355	-68 574.74	3	643	859.38
L356	-69 043.78	3	643	602.01	R356	-68 584.71	3	643	854.57
L357	-69 136.26	3	643	585.76	R357	-68 696.06	3	643	804.64
					<div> <div>Vel</div> <div>21</div> <div>Van</div> <div>23</div> <div>of</div> <div>P1189/19</div> </div>				
					<div> <div>Sheet</div> <div></div> <div></div> <div></div> <div></div> <div></div> </div>				



PADRESERWE KOÖRDINATE / ROAD RESERVE CO-ORDINATES									
LINKERKANT/LEFT HAND SIDE					REGTERKANT/RIGHT HAND SIDE				
	Y		X	WG 27°		Y		X	
L358	-69 229.88	3	643	576.46	R358	-68 777.00	3	643	762.41
L359	-69 401.09	3	643	564.16	R359	-68 858.87	3	643	725.61
L360	-69 454.66	3	643	568.24	R360	-68 942.53	3	643	695.21
L361	-69 460.07	3	643	568.65	R361	-68 999.75	3	643	678.49
L362	-69 607.39	3	643	570.04	R362	-69 086.74	3	643	659.61
L363	-69 652.32	3	643	564.30	R363	-69 116.08	3	643	654.34
L364	-69 725.22	3	643	566.63	R364	-69 145.29	3	643	649.10
L365	-69 757.28	3	643	560.89	R365	-69 222.68	3	643	639.36
L366	-69 786.78	3	643	559.98	R366	-69 282.88	3	643	641.78
L367	-69 821.07	3	643	554.12	R367	-69 340.92	3	643	643.51
L368	-69 901.07	3	643	538.84	R368	-69 562.94	3	643	639.07
L369	-69 945.24	3	643	551.69	R369	-69 678.82	3	643	636.74
L370	-70 086.80	3	643	611.13	R370	-69 766.16	3	643	641.60
L371	-70 169.70	3	643	626.40	R371	-70 035.59	3	643	677.25
L372	-70 171.97	3	643	626.82	R372	-70 106.98	3	643	696.93
L373	-70 198.21	3	643	634.11	R373	-70 131.88	3	643	703.77
L374	-70 242.58	3	643	654.92	R374	-70 183.80	3	643	719.65
L375	-70 295.80	3	643	685.22	R375	-70 322.28	3	643	768.62
L376	-70 370.32	3	643	684.94	R376	-70 401.87	3	643	813.89
L377	-70 393.95	3	643	712.34	R377	-70 457.10	3	643	840.52
L378	-70 440.98	3	643	745.86	R378	-70 589.56	3	643	916.41
L379	-70 504.08	3	643	786.47	R379	-70 699.00	3	643	969.53
L380	-70 622.82	3	643	846.11	R380	-70 820.09	3	644	038.85
L381	-70 665.03	3	643	875.28	R381	-70 859.65	3	644	061.51
L382	-70 799.29	3	643	947.60	R382	-70 907.43	3	644	096.08
L383	-70 951.54	3	644	013.94	R383	-71 021.67	3	644	141.45
L384	-71 012.34	3	644	050.44	R384	-71 102.44	3	644	184.53
L385	-71 045.33	3	644	073.43	R385	-71 233.48	3	644	262.45
L386	-71 067.92	3	644	093.69	R386	-71 372.45	3	644	327.79
L387	-71 159.22	3	644	142.86	R387	-71 429.66	3	644	360.05
L388	-71 268.48	3	644	197.64	R388	-71 499.22	3	644	398.78
L389	-71 320.50	3	644	226.48	R389	-71 576.26	3	644	407.36
L390	-71 373.35	3	644	118.10	R390	-71 636.95	3	644	423.47
L391	-71 399.77	3	644	134.02	R391	-71 697.53	3	644	436.49
L392	-71 426.94	3	644	143.75	R392	-71 730.13	3	644	442.32
L393	-71 451.36	3	644	158.06	R393	-71 759.30	3	644	447.02
L394	-71 467.91	3	644	198.84	R394	-71 788.10	3	644	452.80
L395	-71 490.27	3	644	233.61	R395	-71 908.07	3	644	474.17
L396	-71 511.04	3	644	293.36	R396	-71 998.48	3	644	489.59
L397	-71 518.40	3	644	294.92	R397	-72 012.91	3	644	492.40
L398	-71 563.31	3	644	315.38	R398	-72 087.94	3	644	506.78
L399	-71 580.23	3	644	326.37	R399	-72 139.39	3	644	520.64
L400	-71 608.07	3	644	353.29	R400	-72 159.91	3	644	524.95
L401	-71 789.24	3	644	393.54	R401	-72 172.89	3	644	527.70
L402	-71 815.08	3	644	395.13	R402	-72 276.98	3	644	566.09
L403	-71 925.14	3	644	416.69	R403	-72 391.69	3	644	620.63
L404	-71 948.73	3	644	417.20	R404	-72 503.46	3	644	687.07
L405	-72 013.09	3	644	428.99	R405	-72 698.85	3	644	806.70
L406	-72 013.29	3	644	429.03	R406	-72 713.37	3	644	819.06
L407	-72 055.00	3	644	433.50	R407	-72 772.80	3	644	871.04
L408	-72 100.84	3	644	445.35	R408	-72 909.51	3	644	936.93
					Vel Sheet	22	Van of	23	P1189/19

PADRESERVE KOÖRDINATE / ROAD RESERVE CO-ORDINATES									
LINKERKANT/LEFT HAND SIDE					REGTERKANT/RIGHT HAND SIDE				
	Y		X	WG 27°		Y		X	
L409	-72 130.79	3	644	452.40	R409	-73 039.98	3	645	017.50
L410	-72 166.18	3	644	459.09	R410	-73 119.93	3	645	067.01
L411	-72 218.12	3	644	477.51	R411	-73 291.16	3	645	173.29
L412	-72 218.40	3	644	477.54	R412	-73 365.91	3	645	219.14
L413	-72 310.28	3	644	508.39	R413	-73 446.36	3	645	279.51
L414	-72 372.16	3	644	541.40	R414	-73 488.04	3	645	317.84
L415	-72 423.02	3	644	563.91	R415	-73 515.12	3	645	342.75
L416	-72 481.86	3	644	599.47	R416	-73 572.75	3	645	408.43
L417	-72 502.63	3	644	612.03	R417	-73 593.41	3	645	437.23
L418	-72 532.27	3	644	630.35	R418	-73 609.59	3	645	459.40
L419	-72 571.92	3	644	656.46	R419	-73 633.61	3	645	494.11
L420	-72 596.55	3	644	669.94					
L421	-72 737.37	3	644	755.98					
L422	-72 761.80	3	644	753.97					
L423	-72 847.81	3	644	805.47					
L424	-72 896.18	3	644	847.75					
L425	-72 948.53	3	644	887.86					
L426	-73 055.07	3	644	952.85					
L427	-73 165.05	3	645	017.80					
L428	-73 228.66	3	645	060.46					
L429	-73 394.42	3	645	163.67					
L430	-73 436.32	3	645	189.75					
L431	-73 487.20	3	645	227.52					
L432	-73 534.09	3	645	266.75					
L433	-73 653.96	3	645	381.42					
L434	-73 656.18	3	645	383.83					
L435	-73 673.05	3	645	402.12					
L436	-73 712.28	3	645	416.71					
L437	-73 728.47	3	645	468.25					
AL1	-41 321.03	3	641	006.73					
AL2	-41 360.98	3	640	997.05					
AL3	-41 397.68	3	641	003.60					
AL4	-41 402.22	3	641	007.40					
AL5	-41 426.26	3	641	027.54					
AL6	-41 431.73	3	641	058.16					
AL7	-41 369.90	3	641	081.51					
AL8	-41 333.52	3	641	026.40					
AL9	-41 321.83	3	641	008.49					