
GOVERNMENT NOTICES • GOEWERMENTSKENNISGEWINGS

DEPARTMENT OF TRANSPORT**NO. 6243****30 May 2025**

**THE SOUTH AFRICAN NATIONAL ROADS
AGENCY SOC LIMITED****Registration No: 1998/009584/30**

DECLARATION AMENDMENT OF NATIONAL ROAD N1 SECTION 19

AMENDMENT OF DECLARATION No. 333 OF 2018.

By virtue of section 40(1)(b) of the South African National Roads Agency Limited and the National Roads Act 1998 (Act No. 7 of 1998), I hereby amend Declaration No. 333 of 2018 by substituting sheets 17, 27, 28 and 29 with the accompanying sheets 17A, 27A, 28A and 29A of Plan No. P967/17.

(National Road N1 Section 19: Vaal River – Elandsfontein)
MINISTER OF TRANSPORT

DEPARTEMENT VAN VERVOER

NO. 6243

30 Mei 2025

**DIE SUID-AFRIKAANSE NASIONALE
PADAGENTSKAP MSB BEPERK**

Registrasie No: 1998/009584/30

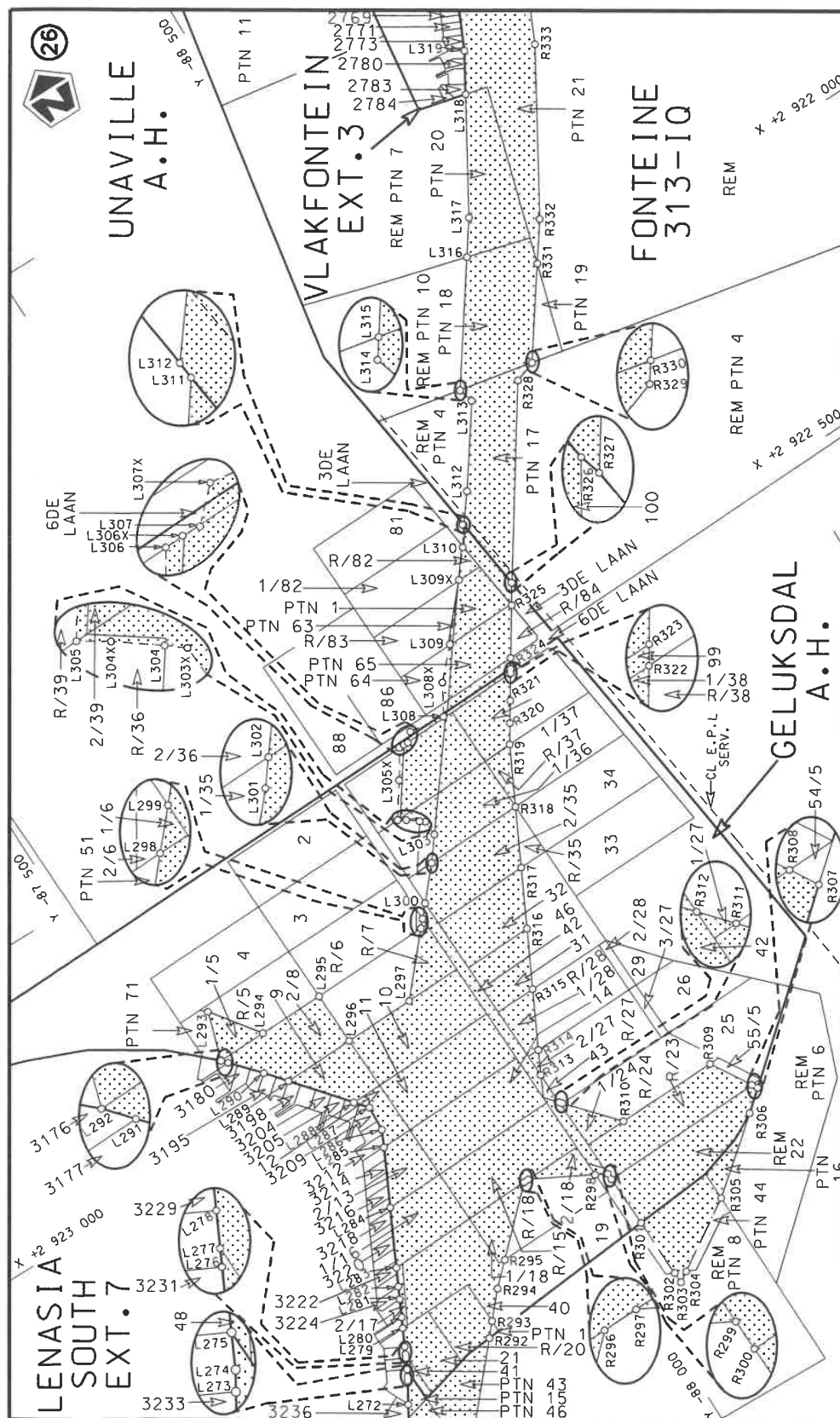
VERKLARING WYSIGING VAN NASIONALE PAD N1 SEKSIE 19


WYSIGING VAN VERKLARING No. 333 VAN 2018.

Kragtens Artikel 40(1)(b) van die Suid-Afrikaanse Nasionale Padagentskap Beperk en Nasionale Paaie Wet 1998 (Wet No. 7 van 1998), wysig ek hiermee Verklaring No. 333 van 2018 deur velle 17,27,28 en 29 te vervang met bygaande velle 17A, 27A, 28A en 29A van Plan No. P967/17.

(Nasionale Pad N1 Seksie 19: Vaal Rivier – Elandsfontein)


MINISTER VAN VERVOER



Die Suid Afrikaanse Nasionale Padagentskap MSB Bpk The South African National Roads Agency SOC Ltd	Die figuur getoon The figure shown		stel die padreserwe voor van 'n gedeelte represents the road reserve of a portion van Nasionale Roete N1 of National Route	Vel Sheet 17A of 29 Plan p967/17
---	---	--	---	---

PADRESERWE KOÖRDINATE / ROAD RESERVE CO-ORDINATES									
LINKERKANT/LEFT HAND SIDE					REGTERKANT/RIGHT HAND SIDE				
	Y	X	WG 27°			Y	X		
L256	-87 016.28	2 924	352.29		R256	-86 336.86	2 925	298.24	
L257	-87 039.85	2 924	318.34		R257	-86 380.65	2 925	257.88	
L258	-87 043.09	2 924	313.68		R258	-86 424.06	2 925	217.76	
L259	-87 057.07	2 924	293.66		R259	-86 427.36	2 925	214.26	
L260	-87 070.20	2 924	274.68		R260	-86 438.72	2 925	205.23	
L261	-87 097.17	2 924	235.85		R261	-86 457.06	2 925	182.75	
L262	-87 124.13	2 924	196.98		R262	-86 461.76	2 925	177.76	
L263	-87 151.10	2 924	158.16		R263	-86 478.08	2 925	160.46	
L264	-87 153.43	2 924	154.83		R264	-86 515.62	2 925	120.64	
L265	-87 360.90	2 923	856.03		R265	-86 537.90	2 925	097.01	
L266	-87 419.92	2 923	763.22		R266	-86 590.65	2 925	041.13	
L267	-87 471.64	2 923	679.11		R267	-86 628.21	2 925	001.22	
L268	-87 513.85	2 923	609.69		R268	-86 637.32	2 924	991.56	
L269	-87 523.72	2 923	593.45		R269	-86 642.99	2 924	985.55	
L270	-87 533.59	2 923	577.21		R270	-86 651.62	2 924	975.33	
L271	-87 534.97	2 923	574.95		R271	-86 696.40	2 924	922.31	
L272	-87 547.60	2 923	554.17		R272	-86 696.39	2 924	922.21	
L273	-87 569.33	2 923	518.42		R273	-86 773.02	2 924	831.57	
L274	-87 573.22	2 923	512.03		R274	-86 782.66	2 924	818.24	
L275	-87 578.81	2 923	500.61		R275	-86 820.88	2 924	765.36	
L276	-87 587.69	2 923	482.62		R276	-86 833.11	2 924	748.43	
L277	-87 590.64	2 923	476.65		R277	-86 847.22	2 924	728.92	
L278	-87 596.59	2 923	464.71		R278	-86 861.28	2 924	709.46	
L279	-87 611.19	2 923	435.16		R279	-86 901.50	2 924	653.82	
L280	-87 619.71	2 923	417.90		R280	-87 054.34	2 924	436.21	
L281	-87 633.81	2 923	389.37		R281	-87 068.32	2 924	416.30	
L282	-87 643.77	2 923	369.20		R282	-87 080.78	2 924	398.60	
L283	-87 658.60	2 923	339.18		R283	-87 108.06	2 924	359.74	
L284	-87 705.81	2 923	243.61		R284	-87 119.91	2 924	342.82	
L285	-87 752.91	2 923	148.21		R285	-87 134.84	2 924	321.61	
L286	-87 766.38	2 923	119.73		R286	-87 164.89	2 924	279.76	
L287	-87 768.68	2 923	075.27		R287	-87 337.70	2 924	039.81	
L288	-87 750.49	2 923	053.27		R288	-87 478.64	2 923	842.69	
L289	-87 674.26	2 922	961.06		R289	-87 521.21	2 923	783.81	
L290	-87 645.44	2 922	926.20		R290	-87 584.65	2 923	696.92	
L291	-87 602.38	2 922	878.19		R291	-87 589.24	2 923	690.64	
L292	-87 594.06	2 922	868.70		R292	-87 731.21	2 923	531.16	
L293	-87 620.49	2 922	783.24		R293	-87 751.03	2 923	508.26	
L294	-87 681.40	2 922	866.00		R294	-87 789.79	2 923	464.93	
L295	-87 798.50	2 922	862.58		R295	-87 827.67	2 923	428.64	
L296	-87 801.36	2 922	957.03		R296	-87 929.21	2 923	331.21	
L297	-87 927.77	2 922	953.22		R297	-87 938.03	2 923	330.94	
L298	-88 013.44	2 922	856.14		R298	-88 041.51	2 923	385.69	
L299	-88 024.80	2 922	843.32		R299	-88 060.79	2 923	395.98	
L300	-88 043.11	2 922	822.46		R300	-88 061.32	2 923	407.67	
L301	-88 090.36	2 922	768.92		R301	-88 064.18	2 923	500.21	
L302	-88 090.63	2 922	768.57		R302	-88 067.05	2 923	605.87	
L303	-88 121.34	2 922	728.66		R303	-88 067.63	2 923	625.48	
L303X	-88 119.93	2 922	701.43		R304	-88 085.39	2 923	614.21	
L304	-88 111.89	2 922	695.15		R305	-88 206.31	2 923	537.47	
L304X	-88 093.08	2 922	681.05		R306	-88 328.83	2 923	437.74	
					<div> <div>Vel</div> <div>Sheet</div> </div> <div> <div>27A</div> <div>Van of</div> </div> <div> <div>29</div> <div>P967/17</div> </div>				

PADRESERWE KOÖRDINATE / ROAD RESERVE CO-ORDINATES									
LINKERKANT/LEFT HAND SIDE					REGTERKANT/RIGHT HAND SIDE				
	Y	X	WG 27°			Y	X		
L305	-88 080.25	2 922 672.99			R307	-88 364.42	2 923 407.55		
L305X	-88 120.11	2 922 615.11			R308	-88 358.42	2 923 397.67		
L306	-88 150.74	2 922 566.92			R309	-88 315.37	2 923 326.88		
L306X	-88 159.80	2 922 566.63			R310	-88 133.50	2 923 332.23		
L307	-88 168.36	2 922 567.26			R311	-88 059.92	2 923 249.04		
L307X	-88 182.40	2 922 553.35			R312	-88 056.07	2 923 244.69		
L308	-88 245.89	2 922 562.20			R313	-88 054.29	2 923 186.53		
L308X	-88 276.75	2 922 510.61			R314	-88 074.18	2 923 147.16		
L309	-88 323.57	2 922 460.96			R315	-88 122.68	2 923 051.19		
L309X	-88 362.46	2 922 415.44			R316	-88 171.02	2 922 955.56		
L310	-88 397.53	2 922 373.67			R317	-88 219.69	2 922 859.27		
L310X	-88 433.75	2 922 328.97			R318	-88 268.09	2 922 763.31		
L311	-88 455.06	2 922 298.91			R319	-88 317.87	2 922 665.16		
L311X	-88 454.75	2 922 295.36			R320	-88 338.17	2 922 633.70		
L312	-88 491.13	2 922 248.07			R321	-88 359.52	2 922 600.59		
L313	-88 582.65	2 922 117.98			R322	-88 385.76	2 922 559.91		
L314	-88 574.74	2 922 092.11			R323	-88 389.89	2 922 553.49		
L315	-88 575.20	2 922 091.45			R324	-88 400.18	2 922 537.39		
L316	-88 709.37	2 921 900.05			R325	-88 451.04	2 922 459.73		
L317	-88 749.31	2 921 843.09			R326	-88 471.96	2 922 425.96		
L318	-88 859.16	2 921 656.57			R327	-88 472.20	2 922 426.76		
L319	-88 898.07	2 921 590.55			R328	-88 670.46	2 922 131.15		
L320	-89 020.08	2 921 323.43			R329	-88 707.71	2 922 118.39		
L321	-89 114.88	2 921 037.30			R330	-88 708.09	2 922 117.84		
L322	-89 119.53	2 921 018.66			R331	-88 808.08	2 921 975.35		
L323	-89 154.66	2 920 854.52			R332	-88 853.14	2 921 911.14		
L324	-89 176.01	2 920 757.87			R333	-89 008.77	2 921 646.94		
L325	-89 183.42	2 920 691.19			R334	-89 135.74	2 921 367.90		
L326	-89 199.42	2 920 547.22			R335	-89 200.91	2 921 172.10		
L327	-89 208.43	2 920 466.25			R336	-89 208.23	2 921 150.35		
L328	-89 209.67	2 920 171.16			R337	-89 232.04	2 921 077.61		
L329	-89 209.90	2 920 116.93			R338	-89 245.01	2 921 018.64		
L330	-89 202.80	2 919 716.86			R339	-89 286.55	2 920 829.75		
L331	-89 225.33	2 919 571.86			R340	-89 297.90	2 920 778.17		
L332	-89 256.82	2 919 369.16			R341	-89 310.24	2 920 669.76		
L333	-89 258.70	2 919 357.06			R342	-89 326.64	2 920 525.73		
L334	-89 275.60	2 919 268.01			R343	-89 332.59	2 920 473.49		
L335	-89 315.09	2 919 096.59			R344	-89 331.59	2 920 168.72		
L336	-89 347.46	2 918 966.51			R345	-89 331.22	2 920 116.65		
L337	-89 446.49	2 918 677.80			R346	-89 330.32	2 919 990.10		
L338	-89 550.69	2 918 443.73			R347	-89 330.37	2 919 868.49		
L339	-89 570.63	2 918 398.95			R348	-89 333.97	2 919 807.80		
L340	-89 669.53	2 918 220.24			R349	-89 338.02	2 919 747.13		
L341	-89 718.38	2 918 131.96			R350	-89 341.46	2 919 695.24		
L342	-89 888.90	2 917 878.90			R351	-89 344.93	2 919 649.30		
L343	-89 918.59	2 917 842.20			R352	-89 348.07	2 919 588.53		
L344	-90 080.86	2 917 641.71			R353	-89 355.26	2 919 538.06		
L345	-90 292.80	2 917 422.17			R354	-89 360.24	2 919 504.96		
L346	-90 299.92	2 917 416.04			R355	-89 391.31	2 919 309.79		
L347	-90 412.75	2 917 316.38			R356	-89 395.04	2 919 286.34		
L348	-90 521.46	2 917 220.35			R357	-89 397.57	2 919 276.16		
					<div> <div>Vel</div> <div>Sheet</div> </div> <div> <div>28A</div> <div>of</div> </div> <div> <div>Van</div> <div>29</div> </div> <div>P967/17</div>				

PADRESERWE KOÖRDINATE / ROAD RESERVE CO-ORDINATES									
LINKERKANT/RIGHT HAND SIDE					REGTERKANT/RIGHT HAND SIDE				
	Y		X	WG 27°		Y		X	
L349	-90 540.26	2	917	204.74	R358	-89 466.04	2	919	000.37
L350	-90 659.67	2	917	105.46	R359	-89 562.04	2	918	721.78
L351	-90 763.70	2	917	018.84	R360	-89 681.43	2	918	452.38
L352	-90 827.55	2	916	964.93	R361	-89 824.14	2	918	194.66
					R362	-89 988.94	2	917	950.42
					R363	-90 174.21	2	917	721.35
					R364	-90 352.59	2	917	536.38
					R365	-90 378.81	2	917	509.24
					R366	-90 464.11	2	917	432.84
					R367	-90 595.44	2	917	315.21
					R368	-90 598.29	2	917	312.66
					R369	-90 714.25	2	917	216.11
					R370	-90 828.84	2	917	120.71
					R371	-90 842.53	2	917	109.40
					R372	-90 854.87	2	917	099.20
					R373	-91 061.16	2	916	928.87
					R374	-91 070.55	2	916	920.30