
GOVERNMENT NOTICES • GOEWERMENTSKENNISGEWINGS

DEPARTMENT OF TRANSPORT**NO. 6241****30 May 2025**

**THE SOUTH AFRICAN NATIONAL ROADS
AGENCY SOC LIMITED****Registration No: 1998/009584/30**

DECLARATION AMENDMENT OF NATIONAL ROAD N1 SECTION 25X

AMENDMENT OF DECLARATION No. 461 OF 2019

By virtue of section 40(1)(b) of the South African National Roads Agency Limited and the National Roads Act, 1998 (Act No. 7 of 1998), I hereby amend Declaration No. 461 of 2019 by substituting sheets 6 and 20 with the subjoined sheets 6A and 20A of Plan No. P1074/18.

(National Road N1 Section 25X: Groenvaley – Mokopane)
MINISTER OF TRANSPORT

DEPARTEMENT VAN VERVOER

NO. 6241

30 Mei 2025

**DIE SUID-AFRIKAANSE NASIONALE
PADAGENTSKAP MSB BEPERK**

Registrasie No: 1998/009584/30

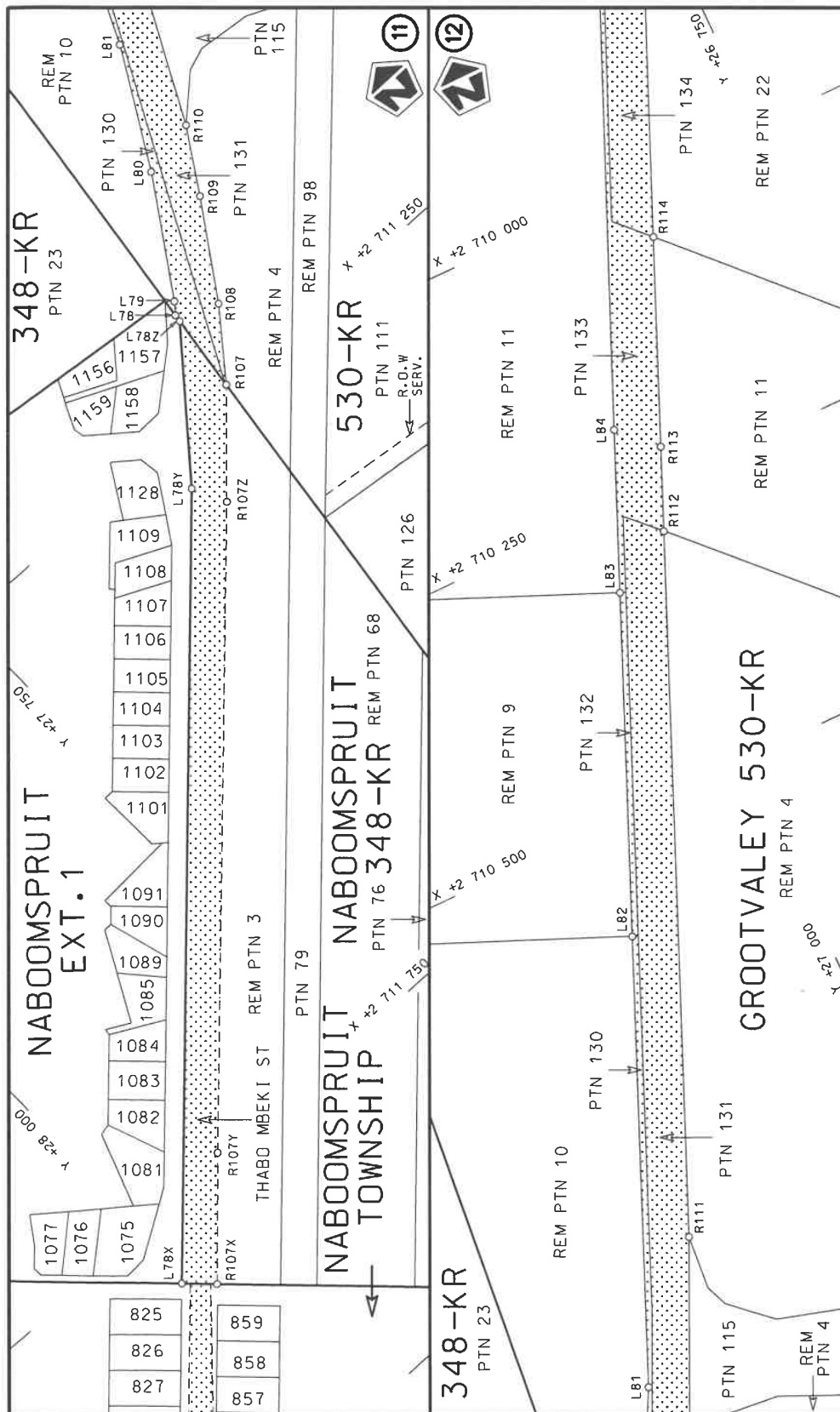
VERKLARING WYSIGING VAN NASIONALE PAD N1 SEKSIE 25X


WYSIGING VAN VERKLARING No. 461 VAN 2019

Kragtens Artikel 40(1)(b) van die Wet op die Suid-Afrikaanse Nasionale Padagentskap Beperk en op Nasionale Paaie, 1998 (Wet No. 7 van 1998), wysig ek hiermee Verklaring No. 461 van 2019 deur velle 6 en 20 te vervang met meegaande velle 6A en 20A van Plan No. P1074/18.

(Nasionale Pad N1 Seksie 25X: Groenvaley – Mokopane)


MINISTER VAN VERVOER



Die Suid Afrikaanse Nasionale Podagentskap MSB Bpk	Die figuur getoon		stel die padreserwe voor van 'n gedeelte represents the road reserve of a portion van Nasionale Roete N1 of National Route	Vel Sheet 6A of 20
The South African National Roads Agency SOC Ltd	The figure shown			25X Plan P1074/18

PADRESERWE KOÖRDINATE / ROAD RESERVE CO-ORDINATES									
LINKERKANT/LEFT HAND SIDE					REGTERKANT/RIGHT HAND SIDE				
	Y	X	WG 29°		Y	X			
L205	3 998.80	2 686 455.45		R205	5 880.14	2 688 925.16			
L206	3 922.09	2 686 385.91		R206	5 848.63	2 688 886.12			
L207	3 827.09	2 686 310.35		R207	5 378.28	2 688 303.24			
L208	3 618.47	2 686 177.06		R208	5 136.57	2 688 004.03			
L209	3 424.58	2 686 095.24		R209	5 073.71	2 687 926.22			
L210	2 947.66	2 685 949.63		R210	4 946.60	2 687 768.88			
L211	2 372.57	2 685 763.62		R211	4 859.54	2 687 650.88			
L212	2 330.47	2 685 741.39		R212	4 722.43	2 687 452.58			
L213	2 325.59	2 685 719.99		R213	4 675.29	2 687 384.40			
L214	2 194.67	2 685 631.13		R214	4 639.88	2 687 335.11			
L215	2 089.14	2 685 524.90		R215	4 574.71	2 687 244.41			
L216	2 040.58	2 685 490.31		R216	4 542.95	2 687 203.15			
L217	2 016.07	2 685 436.54		R217	4 438.99	2 687 068.06			
L218	1 740.50	2 684 767.52		R218	4 312.36	2 686 903.50			
L219	1 666.95	2 684 588.96		R219	4 090.30	2 686 614.94			
L220	1 380.42	2 683 893.96		R220	4 077.41	2 686 598.20			
L221	1 342.07	2 683 800.94		R221	4 009.33	2 686 521.58			
L222	978.96	2 682 922.19		R222	3 960.10	2 686 474.55			
L223	584.87	2 681 962.95		R223	3 915.23	2 686 431.68			
L224	342.37	2 681 378.52		R224	3 793.93	2 686 333.58			
L225	274.73	2 681 215.49		R225	3 784.65	2 686 327.68			
L226	-132.93	2 680 261.96		R226	3 749.92	2 686 303.71			
L227	-366.28	2 679 730.72		R227	3 715.73	2 686 281.24			
L228	-371.68	2 679 719.97		R228	3 676.69	2 686 257.14			
L229	-420.51	2 679 623.07		R229	3 629.83	2 686 229.79			
L230	-497.84	2 679 446.00		R230	3 584.96	2 686 207.10			
L77X	28 002.53	2 711 808.21		R231	3 534.27	2 686 182.15			
L77Y	27 525.65	2 711 295.44		R232	3 434.08	2 686 141.55			
L77Z	27 434.80	2 711 178.74		R233	3 181.02	2 686 062.38			
				R234	3 042.22	2 686 019.29			
				R235	2 961.29	2 685 995.76			
				R236	2 858.33	2 685 959.80			
				R237	2 671.46	2 685 902.27			
				R238	2 645.41	2 685 885.26			
				R239	2 573.84	2 685 861.03			
				R240	2 554.56	2 685 864.82			
				R241	2 309.49	2 685 787.71			
				R242	2 297.09	2 685 825.15			
				R243	2 264.80	2 685 817.11			
				R244	2 237.62	2 685 758.05			
				R245	2 171.10	2 685 719.16			
				R246	2 105.97	2 685 664.98			
				R247	2 083.65	2 685 666.07			
				R248	2 056.96	2 685 690.49			
				R249	2 001.75	2 685 556.55			