
GOVERNMENT NOTICES • GOEWERMENTSKENNISGEWINGS

DEPARTMENT OF TRANSPORT**NO. 6239****30 May 2025**

**THE SOUTH AFRICAN NATIONAL ROADS
AGENCY SOC LIMITED****Registration No: 1998/009584/30**

DECLARATION AMENDMENT OF NATIONAL ROAD N2 SECTION 28

AMENDMENT OF DECLARATION No. 325 OF 2018.

By virtue of section 40(1)(b) of the South African National Roads Agency Limited and the National Roads Act 1998 (Act No. 7 of 1998), I hereby amend Declaration No. 325 of 2018 by substituting sheets 10,11,12,13,18 and 19 with the accompanying sheets 10A,11A,12A,13A,18A and 19A of Plan No. P993/17.

(National Road N2 Section 28: Tugela River – Umhlatuze River)
MINISTER OF TRANSPORT

DEPARTEMENT VAN VERVOER

NO. 6239

30 Mei 2025

**DIE SUID-AFRIKAANSE NASIONALE
PADAGENTSKAP MSB BEPERK**

Registrasie No: 1998/009584/30

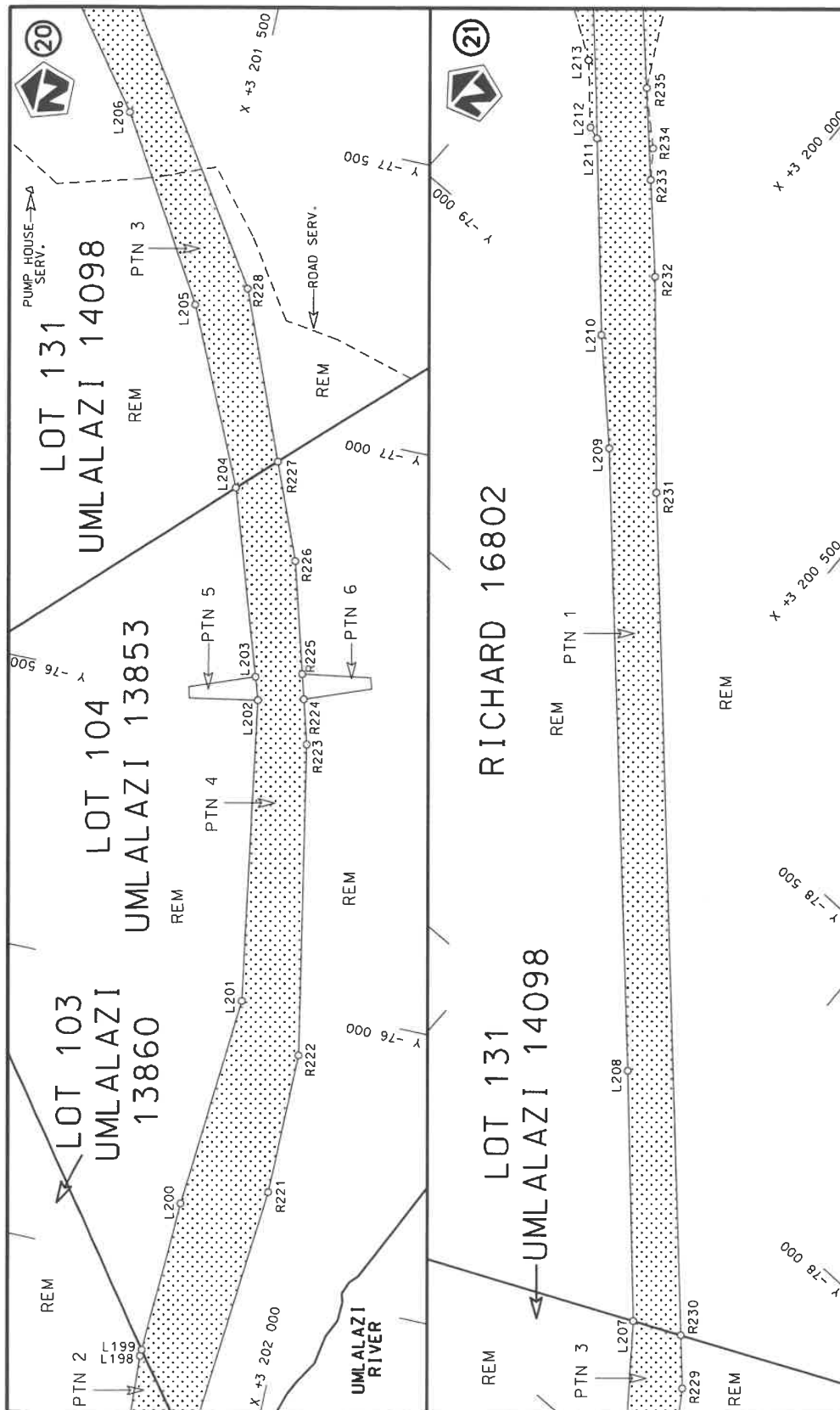
VERKLARING WYSIGING VAN NASIONALE PAD N2 SEKSIE 28


WYSIGING VAN VERKLARING No. 325 VAN 2018.

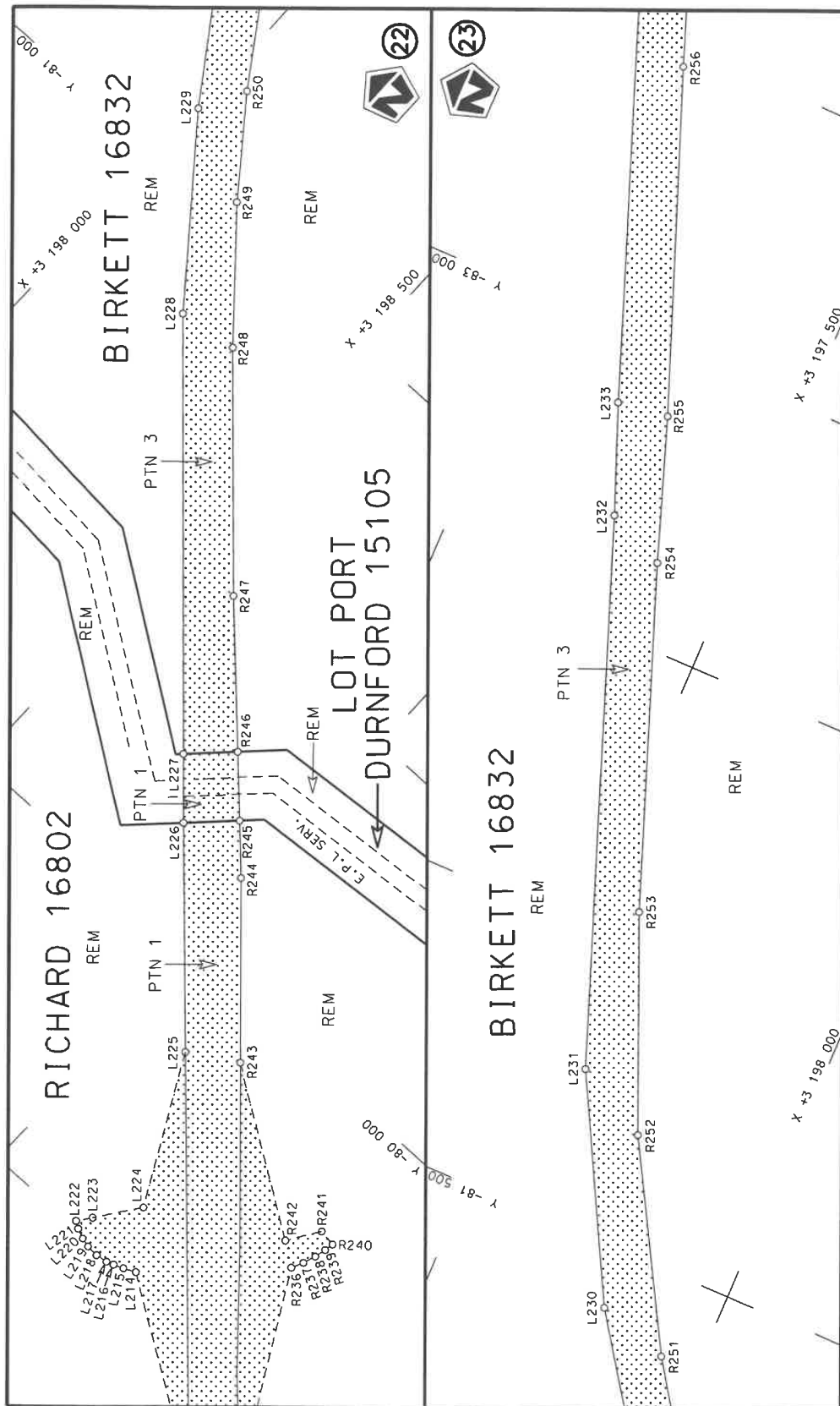
Kragtens Artikel 40(1)(b) van die Suid-Afrikaanse Nasionale Padagentskap Beperk en Nasionale Paaie Wet 1998 (Wet No. 7 van 1998), wysig ek hiermee Verklaring No. 325 van 2018 deur velle 10,11,12,13,18 en 19 te vervang met bygaande velle 10A,11A,12A,13A,18A en 19A van Plan No. P993/17.

(National Road N2 Section 28: Tugela Rivier – Umhlatuze Rivier)

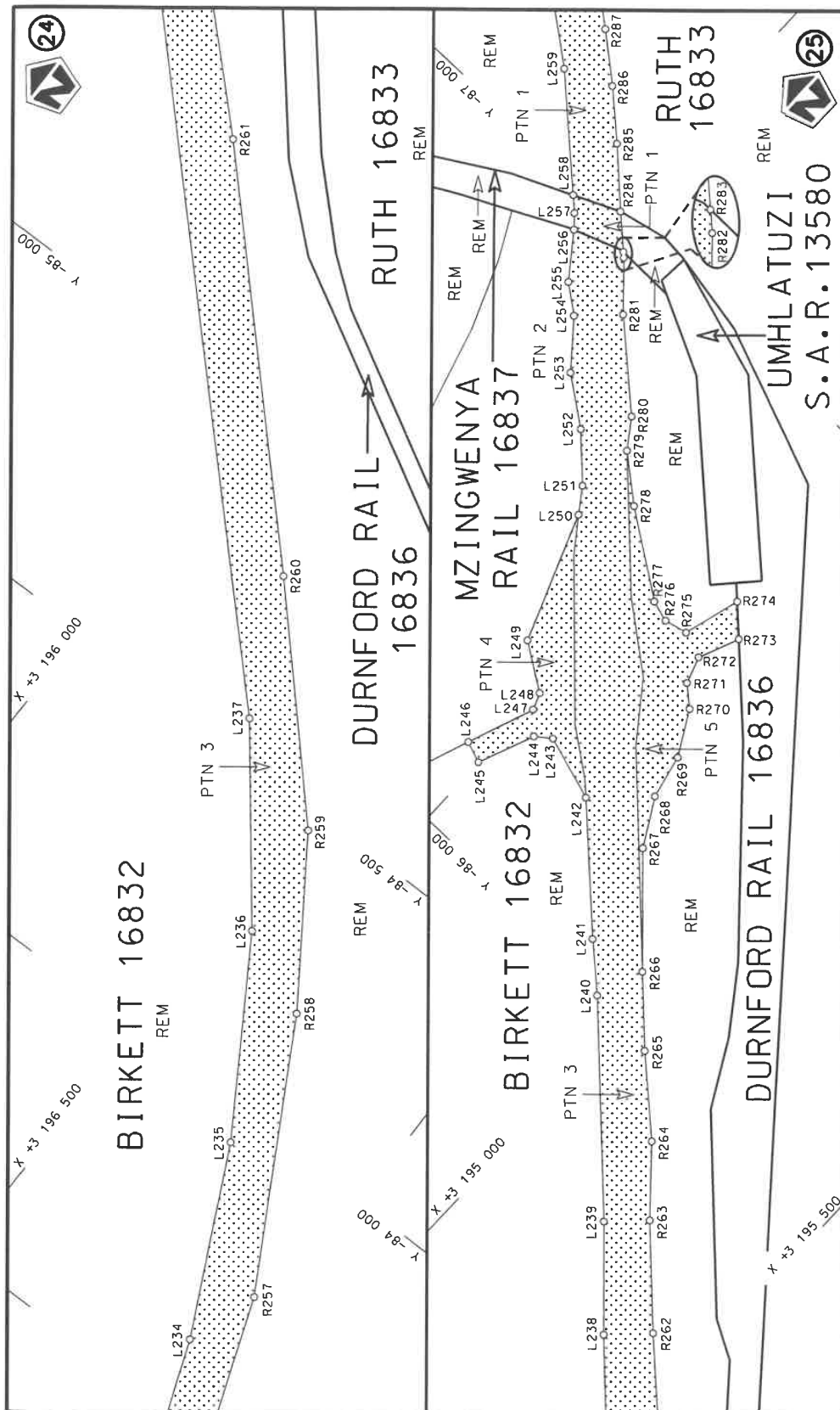

MINISTER VAN VERVOER




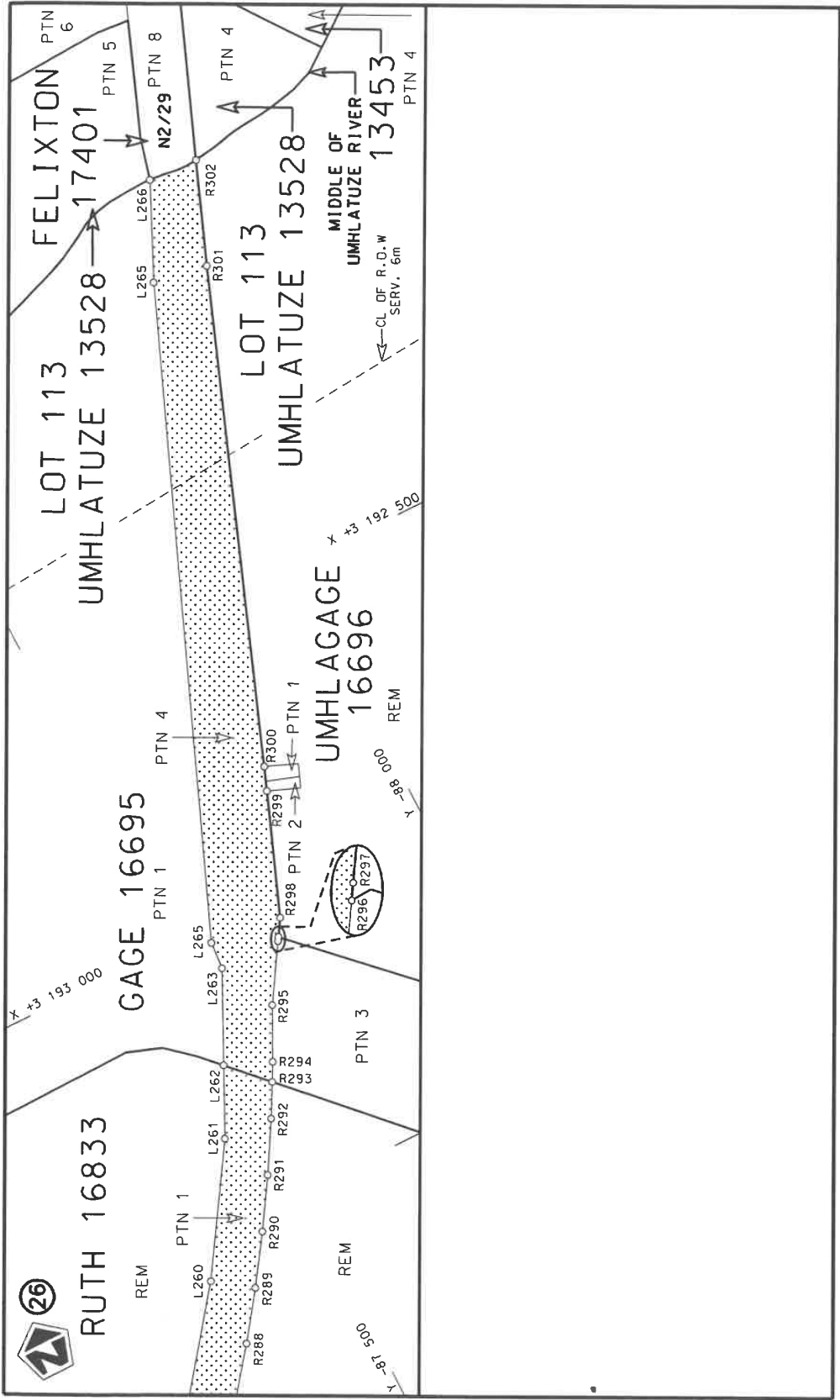
Die Suid Afrikaanse Nasionale Padagentskap MSB Bpk The South African National Roads Agency SOC Ltd	Die figuur getoon The figure shown	 steldie padreserwe voor van 'n gedeelte represents the road reserve of a portion van Nasionale Roete N2 of National Route	Vel Sheet 10A of 19 Plan P993/17
---	---------------------------------------	---	--

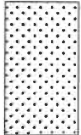


Die Suid Afrikaanse Nasionale Padagentskap MSB Bpk The South African National Roads Agency SOC Ltd	Die figuur getoon The figure shown	<div data-bbox="1273 1077 1353 1211" data-label="Image"> </div> steldie podreserwe voor van 'n gedeelte represents the road reserve of a portion van Nasionale Roete N2 Sektie of National Route of National Route	Vel Sheet 11A of 19 Plan P993/17
---	---------------------------------------	---	--



Die Suid Afrikaanse Nasionale Padagentskap MSB Bpk The South African National Roads Agency SOC Ltd	Die figuur getoon The figure shown		steldie padreserwe voor van 'n gedeelte represents the road reserve of a portion van Nasionale Roete N2 of National Route	Vel Sheet 12A of 19 Plan P993/17
---	---------------------------------------	---	--	--



Die Suid Afrikaanse Nasionale Padagentskap MSB Bpk The South African National Roads Agency SOC Ltd	Die figuur getoon The figure shown		steldie padreserwe voor van 'n gedeelte represents the road reserve of a portion van Nasionale Roete N2 of National Route	Vel Sheet	van 13A of
				Plan	P993/17

PADRESERVE KOÖRDINATE / ROAD RESERVE CO-ORDINATES									
LINKERKANT/LEFT HAND SIDE					REGTERKANT/RIGHT HAND SIDE				
	Y		X	WG 31°		Y		X	
L205	-77 171.39	3	201	469.58	R205	-72 458.50	3	203	937.67
L206	-77 477.96	3	201	285.35	R206	-72 796.80	3	203	234.71
L207	-77 709.84	3	201	108.47	R207	-72 862.67	3	203	163.64
L208	-78 037.42	3	200	810.93	R208	-72 996.10	3	202	896.60
L209	-78 845.36	3	200	064.94	R209	-73 018.83	3	202	818.36
L210	-78 986.88	3	199	923.45	R210	-73 262.87	3	202	479.39
L211	-79 242.94	3	199	686.91	R211	-73 478.24	3	202	279.25
L212	-79 250.15	3	199	668.36	R212	-73 720.89	3	202	113.36
L213	-79 337.37	3	199	588.03	R213	-73 796.57	3	202	080.34
L214	-79 516.66	3	199	314.67	R214	-73 891.39	3	202	038.96
L215	-79 507.00	3	199	294.28	R215	-73 989.40	3	201	996.19
L216	-79 500.05	3	199	277.18	R216	-74 266.20	3	201	899.30
L217	-79 495.74	3	199	264.22	R217	-74 459.63	3	201	869.35
L218	-79 492.47	3	199	243.32	R218	-74 713.01	3	201	852.40
L219	-79 493.51	3	199	221.90	R219	-75 109.83	3	201	882.02
L220	-79 497.38	3	199	205.44	R220	-75 192.48	3	201	889.15
L221	-79 504.93	3	199	187.76	R221	-75 667.98	3	201	930.13
L222	-79 512.57	3	199	175.65	R222	-75 915.61	3	201	930.70
L223	-79 536.79	3	199	193.36	R223	-76 455.44	3	201	827.38
L224	-79 610.29	3	199	247.14	R224	-76 532.28	3	201	805.46
L225	-79 862.06	3	199	115.12	R225	-76 575.08	3	201	793.26
L226	-80 160.07	3	198	837.98	R226	-76 767.36	3	201	738.41
L227	-80 249.89	3	198	755.48	R227	-76 932.16	3	201	670.89
L228	-80 824.51	3	198	227.70	R228	-77 218.42	3	201	553.58
L229	-81 110.51	3	198	001.95	R229	-77 676.15	3	201	251.25
L230	-81 394.16	3	197	807.10	R230	-77 745.47	3	201	187.38
L231	-81 770.14	3	197	608.22	R231	-78 840.44	3	200	178.38
L232	-82 691.82	3	197	266.20	R232	-79 126.23	3	199	926.78
L233	-82 877.89	3	197	192.73	R233	-79 249.64	3	199	808.83
L234	-83 625.82	3	196	914.53	R234	-79 294.10	3	199	775.46
L235	-83 945.68	3	196	758.54	R235	-79 366.88	3	199	697.08
L236	-84 264.58	3	196	560.18	R236	-79 707.28	3	199	510.96
L237	-84 559.21	3	196	327.35	R237	-79 728.01	3	199	520.65
L238	-85 547.60	3	195	350.60	R238	-79 750.36	3	199	528.62
L239	-85 693.58	3	195	213.84	R239	-79 770.28	3	199	533.74
L240	-85 977.16	3	194	931.71	R240	-79 786.56	3	199	536.64
L241	-86 044.52	3	194	857.60	R241	-79 790.82	3	199	506.95
L242	-86 218.50	3	194	678.23	R242	-79 735.63	3	199	470.76
L243	-86 254.90	3	194	564.86	R243	-79 913.70	3	199	199.24
L244	-86 234.97	3	194	537.78	R244	-80 156.28	3	198	978.85
L245	-86 135.10	3	194	497.95	R245	-80 229.50	3	198	908.09
L246	-86 148.80	3	194	460.60	R246	-80 317.16	3	198	823.37
L247	-86 268.74	3	194	504.50	R247	-80 516.06	3	198	631.13
L248	-86 297.48	3	194	492.88	R248	-80 839.55	3	198	333.09
L249	-86 350.96	3	194	413.68	R249	-81 033.82	3	198	164.52
L250	-86 573.43	3	194	326.94	R250	-81 190.54	3	198	045.05
L251	-86 615.55	3	194	297.05	R251	-81 354.79	3	197	933.66
L252	-86 686.42	3	194	226.51	R252	-81 699.35	3	197	739.85
L253	-86 746.67	3	194	145.33	R253	-82 063.72	3	197	585.23
L254	-86 823.92	3	194	081.13	R254	-82 644.76	3	197	369.07
L255	-86 860.76	3	194	033.13	R255	-82 890.19	3	197	283.13
					<div> <div>Vel</div> <div>18A</div> <div>Van</div> <div>19</div> <div>Sheet</div> <div>of</div> <div>P993/17</div> </div>				

PADRESERWE KOÖRDINATE / ROAD RESERVE CO-ORDINATES						
LINKERKANT/LEFT HAND SIDE				REGTERKANT/RIGHT HAND SIDE		
	Y	X	WG 31°		Y	X
L256	-86 934.38	3 193 976.80		R256	-83 468.81	3 197 062.60
L257	-86 956.43	3 193 957.35		R257	-83 753.87	3 196 958.14
L258	-86 977.94	3 193 934.04		R258	-84 196.15	3 196 710.62
L259	-87 129.33	3 193 770.06		R259	-84 464.93	3 196 529.14
L260	-87 286.22	3 193 567.04		R260	-84 794.49	3 196 221.10
L261	-87 424.94	3 193 351.39		R261	-85 350.24	3 195 680.92
L262	-87 482.52	3 193 233.89		R262	-85 608.47	3 195 411.27
L263	-87 558.85	3 193 078.48		R263	-85 750.03	3 195 270.53
L264	-87 562.61	3 193 029.42		R264	-85 854.61	3 195 177.52
L265	-88 008.05	3 191 934.86		R265	-85 962.42	3 195 059.10
L266	-88 085.09	3 191 769.29		R266	-86 061.76	3 194 960.45
				R267	-86 221.70	3 194 811.61
				R268	-86 302.93	3 194 764.32
				R269	-86 379.87	3 194 746.13
				R270	-86 456.77	3 194 702.60
				R271	-86 486.93	3 194 667.69
				R272	-86 534.03	3 194 651.76
				R273	-86 605.61	3 194 681.67
				R274	-86 652.32	3 194 634.07
				R275	-86 550.88	3 194 605.77
				R276	-86 541.68	3 194 565.63
				R277	-86 552.64	3 194 528.16
				R278	-86 651.39	3 194 387.17
				R279	-86 714.09	3 194 311.34
				R280	-86 763.67	3 194 276.11
				R281	-86 884.23	3 194 142.05
				R282	-86 957.95	3 194 074.34
				R283	-86 964.98	3 194 066.70
				R284	-87 013.30	3 194 014.14
				R285	-87 096.33	3 193 927.70
				R286	-87 164.46	3 193 852.36
				R287	-87 229.16	3 193 774.70
				R288	-87 292.03	3 193 694.75
				R289	-87 351.55	3 193 613.39
				R290	-87 408.52	3 193 529.72
				R291	-87 462.87	3 193 443.91
				R292	-87 514.27	3 193 356.85
				R293	-87 545.89	3 193 299.34
				R294	-87 562.98	3 193 267.93
				R295	-87 608.43	3 193 177.44
				R296	-87 669.51	3 193 080.62
				R297	-87 673.71	3 193 073.93
				R298	-87 692.04	3 193 045.05
				R299	-87 774.25	3 192 833.10
				R300	-87 790.16	3 192 792.06
				R301	-88 105.26	3 191 951.46
				R302	-88 173.88	3 191 775.10
				<div>Vel 19A Van of 19</div> <div>Sheet of</div> <div>P993/17</div>		