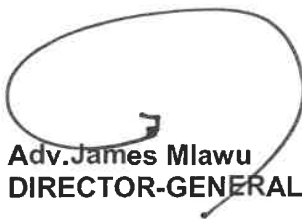

GOVERNMENT NOTICES • GOEWERMENTSKENNISGEWINGS

DEPARTMENT OF TRANSPORT**NO. 5853****7 February 2025****THE SOUTH AFRICAN NATIONAL ROADS AGENCY SOC LIMITED****HUGUENOT, VAAL RIVER, GREAT NORTH, TSITSIKAMMA, SOUTH COAST, NORTH COAST, MARIANNHILL, MAGALIES, N17 AND R30/R730/R34 TOLL ROADS: PUBLICATION OF THE AMOUNTS OF TOLL FOR THE DIFFERENT CATEGORIES OF MOTOR VEHICLES, AND THE DATE AND TIME FROM WHICH THE TOLL TARIFFS SHALL BECOME PAYABLE**

The Head of the Department hereby, in terms of section 28(4) read with section 27(3) of The South African National Roads Agency Limited and National Roads Act, 1998 (Act No. 7 of 1998) [the Act], makes known that the amounts of toll to be levied in terms of section 27(1)(b) of the Act at the toll plazas located on the Huguenot, Vaal River, Great North, Tsitsikamma, South Coast, North Coast, Mariannhill, Magalies, N17 and R30/R730/R34 Toll Roads, and the date and time from which the amounts of toll shall become payable, have been determined by the Minister of Transport in terms of section 27(3)(a) of the Act, and that the said amounts shall be levied in terms of section 27(3)(b) and (d) of the Act, as set out in the Schedule.



Adv. James Mlawu
DIRECTOR-GENERAL: TRANSPORT

SCHEDULE

1. DEFINITIONS

The following words and expressions shall have the meanings stated, unless the context otherwise indicates.

- 1.1 “**Abnormal vehicle**” means a motor vehicle exceeding the legal dimensions as described in the Road Traffic Act, 1996 (Act No. 93 of 1996), as amended, or in any other law.
- 1.2 “**Axle**” means a device or set of devices, whether continuous across the width of the vehicle or not, about which the wheels of the vehicle rotate and which is so placed that, when the vehicle is travelling straight ahead, the vertical centre-lines of such wheels are in one vertical plane at right angles to the longitudinal centre-line of such vehicle. Axle shall also include an axle that is lifted and of which the wheels are not in contact with the road surface.
- 1.3 “**Heavy axle**” means an axle the wheels of which are fitted with tyres of a size (bead seat diameter) greater than 406,4 millimetres (16 inches), or an axle with more than two (2) wheels irrespective of tyre size, but excluding any axle of a motorcycle, a motor tricycle or a motor car.
- 1.4 “**Heavy vehicle**” means a motor vehicle with at least one heavy axle and/or any vehicle which is principally designed or adapted for the conveyance of persons exceeding sixteen (16) in number.
- 1.5 “**Light delivery vehicle**” means a motor vehicle designed or adapted for the conveyance of persons and freight with no heavy axle as defined in paragraph 1.3 above.
- 1.6 “**Light vehicle**” means a motor vehicle, other than a heavy vehicle.
- 1.7 “**Motor car**” means a motor vehicle, other than a motorcycle or a motor tricycle, designed or adapted solely or principally for the conveyance of persons not exceeding sixteen (16) in number, but excluding any vehicle with an axle with more than two (2) wheels irrespective of tyre size.
- 1.8 “**Motorcycle**” means a motor vehicle that has two wheels and includes any such vehicle having a side-car attached thereto.
- 1.9 “**Motor tricycle**” means a motor vehicle, other than a motorcycle with a side-car, which has three wheels and which is designed to be driven by means of the type of controls usually fitted to a motorcycle.
- 1.10 “**Motor vehicle**” means an entity comprising of one or more mechanically/electrically powered units with or without any trailer(s) physically joined by means of tow bars, tow ropes or mechanical articulation, and includes, inter alia:
- (a) a motorcycle;
 - (b) a motor tricycle;
 - (c) a motor car;
 - (d) a vehicle which has pedals and a mechanically/electrically powered unit as an integral part thereof or attached thereto and which is designed or adapted to be propelled by means of either such pedals or such mechanical/electrical unit or both; and
 - (e) a light delivery vehicle (a bakkie).

- 1.11 **“Trailer”** means a vehicle which is not self-propelled and which is designed or adapted to be drawn by a motor vehicle but does not include a side-car attached to a motorcycle.

2. CATEGORIES OF MOTOR VEHICLES

Class 1: *Light vehicles:*

Light vehicles are motor vehicles, other than heavy vehicles as defined above, with or without a trailer, and include motorcycles, motor tricycles and motor cars.

Class 2: *Medium heavy vehicles:*

Medium heavy vehicles are heavy vehicles, as defined above, with two axles.

Class 3: *Large heavy vehicles:*

Large heavy vehicles are heavy vehicles, as defined above, with three or four axles.

Class 4: *Extra large heavy vehicles:*

Extra large heavy vehicles are heavy vehicles, as defined above, with five or more axles.

3. TOLL TARIFF

- 3.1 The amounts of toll for the different categories of motor vehicles, payable at the toll plazas located on the Huguenot, Vaal River, Great North, Tsitsikamma, South Coast, North Coast, Mariannhill, Magalies, N17 and R30/R730/R34 Toll Roads, for the usage of the toll road, or any part thereof, are stated in Table 1.

| TABLE 1: TOLL TARIFF EFFECTIVE 1 MARCH 2025 (INCL 15% VAT) | | | | | | |
|--|--------------------|----------|---------|---------|---------|---------|
| TOLL ROAD | PLAZA | | CLASS 1 | CLASS 2 | CLASS 3 | CLASS 4 |
| N1 Huguenot | Huguenot | Mainline | R53.00 | R146.00 | R229.00 | R371.00 |
| N1 Vaal River | Verkeerdevelei | Mainline | R76.00 | R152.00 | R229.00 | R321.00 |
| | Vaal | Mainline | R89.00 | R167.00 | R200.00 | R267.00 |
| | Grasmere | Mainline | R27.00 | R80.00 | R92.00 | R122.00 |
| | | Ramp (S) | R14.00 | R40.00 | R46.00 | R61.00 |
| | | Ramp (N) | R14.00 | R40.00 | R46.00 | R61.00 |
| N1 Great North | Kranskop | Mainline | R60.00 | R152.00 | R203.00 | R249.00 |
| | | Ramp | R16.00 | R44.00 | R52.00 | R78.00 |
| | Nyl | Mainline | R77.00 | R144.00 | R174.00 | R233.00 |
| | | Ramp | R24.00 | R44.00 | R52.00 | R67.00 |
| | Sebetiela | Ramp | R24.00 | R44.00 | R56.00 | R74.00 |
| | Capricorn | Mainline | R62.00 | R170.00 | R198.00 | R248.00 |
| | Baobab | Mainline | R60.00 | R163.00 | R224.00 | R269.00 |
| N2 Tsitsikamma | Tsitsikamma | Mainline | R71.00 | R178.00 | R424.00 | R600.00 |
| | | Ramp | R71.00 | R178.00 | R424.00 | R600.00 |
| N2 South Coast | Izotsha | Ramp | R12.00 | R22.00 | R30.00 | R52.00 |
| | Oribi | Mainline | R40.00 | R70.00 | R96.00 | R157.00 |
| | | Ramp (S) | R18.00 | R33.00 | R44.00 | R70.00 |
| | | Ramp (N) | R21.00 | R37.00 | R52.00 | R96.00 |
| | Umtentweni | Ramp | R17.00 | R30.00 | R41.00 | R67.00 |
| N2 North Coast | King Shaka Airport | Ramp | R8.00 | R16.00 | R25.00 | R33.00 |
| | oThongathi | Mainline | R15.00 | R31.00 | R41.00 | R59.00 |
| | | Ramp (S) | R7.50 | R17.00 | R20.00 | R30.00 |
| | | Ramp (N) | R7.50 | R17.00 | R20.00 | R30.00 |
| | Mvoti | Mainline | R18.00 | R50.00 | R67.00 | R101.00 |
| | Mandini | Ramp | R10.00 | R19.00 | R22.00 | R30.00 |
| | Dokodweni | Ramp | R26.00 | R52.00 | R59.00 | R81.00 |
| | Mtunzini | Mainline | R62.00 | R118.00 | R141.00 | R210.00 |
| | | Ramp (S) | R51.00 | R96.00 | R115.00 | R166.00 |
| | | Ramp (N) | R11.00 | R22.00 | R26.00 | R43.00 |
| N3 Mariannhill | Mariannhill | Mainline | R16.00 | R29.00 | R35.00 | R55.00 |
| N4 Magalies | Pelindaba | Mainline | R8.00 | R15.00 | R20.00 | R26.00 |
| | Quagga | Mainline | R6.00 | R11.00 | R15.00 | R20.00 |
| N17 | Gosforth | Mainline | R16.00 | R44.00 | R48.00 | R67.00 |
| | | Ramp (W) | R9.00 | R19.00 | R24.00 | R31.00 |
| | | Ramp (E) | R7.50 | R28.00 | R30.00 | R41.00 |
| | Dalpark | Mainline | R15.00 | R31.00 | R41.00 | R56.00 |
| | Denne | Ramp | R13.00 | R26.00 | R33.00 | R44.00 |
| | Leandra | Mainline | R49.00 | R123.00 | R184.00 | R244.00 |
| | | Ramp | R29.00 | R74.00 | R110.00 | R147.00 |
| | Trichardt | Mainline | R24.00 | R61.00 | R93.00 | R122.00 |
| | Ermelo | Mainline | R44.00 | R110.00 | R164.00 | R219.00 |
| R30/R730/R34 | Brandfort | Mainline | R61.00 | R121.00 | R182.00 | R256.00 |

4. LOCAL USER TOLL TARIFF

- 4.1 A local user toll tariff, for different categories of motor vehicles, is granted, subject to the South African National Roads Agency SOC Limited's (SANRAL) terms and conditions (available at the Toll Plazas), to registered *bona fide* residents, employers

or employees, located within an approved local user area, on successful application to the appropriate toll operator.

- 4.2 The local user toll tariffs for the local user areas, as shown on the various maps attached to this Notice and of which a copy can be obtained from SANRAL, for the different categories of motor vehicles, payable at the Verkeerdevlei, Grasmere, Capricorn, Baobab, Tsitsikamma, Leandra, Trichardt, Ermelo and Brandfort Toll Plazas, located on the Vaal River, Great North, Tsitsikamma, N17 and R30/R730/R34 Toll Roads are stated in Table 2.

| TABLE 2: LOCAL USER TOLL TARIFF – TYPE A EFFECTIVE 1 MARCH 2025 (INCL 15% VAT) | | | | | | | |
|---|---------------|------------------|--------------------------------------|----------------|----------------|----------------|----------------|
| TOLL ROAD | PLAZA | | LOCAL USER AREA | CLASS 1 | CLASS 2 | CLASS 3 | CLASS 4 |
| N1 Vaal River | Verkeerdevlei | Mainline | Verkeerdevlei | R24.00 | R48.00 | R73.00 | R97.00 |
| | Grasmere | Mainline | Evaton Sebokeng Vanderbijlpark | R4.50 | | | |
| | | Ramp (S) | Ennerdale Lenasia South | R2.50 | | | |
| | | Ramp (N) | Ennerdale Lenasia South | R2.50 | | | |
| N1 Great North | Capricorn | Mainline | Capricorn | R18.50 | R37.00 | R46.00 | R65.00 |
| | Baobab | Mainline | Baobab | R21.50 | R53.00 | R74.00 | R93.00 |
| | Baobab | Mainline | Tshipise | R31.50 | R79.00 | R111.00 | R142.00 |
| N2 Tsitsikamma | Tsitsikamma | Mainline Ramp | Tsitsikamma | R22.50 | | | |
| | | Mainline Ramp | Nature's Valley Coldstream | R11.00 | | | |
| N17 | Leandra | Mainline | Leandra | R31.00 | R78.00 | R117.00 | R155.00 |
| | | Ramp | Leandra | R18.50 | R47.00 | R70.00 | R93.00 |
| | Trichardt | Mainline | Trichardt | R13.00 | R32.00 | R49.00 | R65.00 |
| | Ermelo | Mainline | Ermelo | R23.00 | R60.00 | R87.00 | R116.00 |
| R30/R730/R34 | Brandfort | Mainline | Area A | R6.50 | R13.00 | R20.00 | R28.00 |
| | | | Area B | R13.00 | R26.00 | R39.00 | R55.00 |
| | | | Area C | R25.50 | R51.00 | R77.00 | R109.00 |

- 4.3 The local user toll tariffs for the local user area, for the different categories of motor vehicles, payable at the Mvoti Toll Plaza located on the North Coast Toll Road are stated in Table 3.

| TABLE 3: LOCAL USER TOLL TARIFF – TYPE B EFFECTIVE 1 MARCH 2025 (INCL 15% VAT) | | | | | | |
|--|----------------|---|---------|---------|---------|---------|
| TOLL ROAD | PLAZA | LOCAL USER AREA | CLASS 1 | CLASS 2 | CLASS 3 | CLASS 4 |
| N2 North Coast | Mvoti Mainline | KwaDukuza | R5.50 | R13.00 | R20.00 | R28.00 |
| N2 North Coast | Dokodweni Ramp | Mandeni Local Municipality wards 1, 2, 3, 8 and 9 | R4.00 | R8.00 | R10.00 | R13.00 |

5. LOCAL PUBLIC TRANSPORT OPERATOR TOLL TARIFF

- 5.1 A local public transport operator toll tariff, for Class 1 motor vehicles only, is granted, subject to SANRAL's terms and conditions (available at the Toll Plazas), to registered *bona fide* local public transport operators operating within an approved local user area, on successful application to the appropriate toll operator.
- 5.2 The local public transport operator toll tariffs for the local user areas, as shown on the various maps attached to this Notice and of which a copy can be obtained from SANRAL, for Class 1 motor vehicles only, payable at the Verkeerdevlei, Capricorn, Baobab and Brandfort Toll Plazas located on the Vaal River, Great North and R30/R730/R34 Toll Roads, are stated in Table 4.

| TABLE 4: LOCAL PUBLIC TRANSPORT OPERATOR TOLL TARIFF EFFECTIVE 1 MARCH 2025 (INCL 15% VAT) | | | | |
|--|---------------|-----------------|----------------|--------|
| TOLL ROAD | PLAZA | LOCAL USER AREA | CLASS 1 | |
| N1 Vaal River | Verkeerdevlei | Mainline | Verkeerdevlei | R24.00 |
| N1 Great North | Capricorn | Mainline | Capricorn | R18.50 |
| | Baobab | Mainline | Baobab | R20.00 |
| R30/R730/R34 | Brandfort | Mainline | Areas A, B & C | R12.00 |

6. FREQUENT USER DISCOUNT

- 6.1 At specified toll plazas, a frequent user discount on the toll tariff, for Class 1 motor vehicles only, is granted, subject to SANRAL's terms and conditions (available at the Toll Plazas), to registered frequent users who complete a prescribed number of passages within a stipulated period, on successful application to the appropriate toll operator. At some of the specified toll plazas, a registered *bona fide* local user and registered *bona fide* local public transport operator may also register as a frequent user. The frequent user discount, according to the number of passages completed within the stipulated period, is either applied to the value of the total number of passages, or to the specific range of trips.
- 6.2 The frequent user discounts for the specified toll plazas located on the Huguenot, Vaal River, Great North, South Coast, North Coast, Mariannhill, Magalies, N17 and R30/R730/R34 Toll Roads, for Class 1 motor vehicles only, for the number of passages completed within the stipulated period, on the toll tariffs stated in the relevant tables, are stated in Tables 5.1 and 5.2.

| TABLE 5.1: FREQUENT USER DISCOUNT – TYPE A | | | | | | |
|---|--------------------|----------|----------------|----------------------------------|-------------|-------------------|
| TOLL ROAD | PLAZA | | CALENDAR MONTH | DISCOUNT FOR THE NO. OF PASSAGES | | TOLL TARIFF TABLE |
| | | | | 20%* | 40%* | |
| N1 Huguenot | Huguenot | Mainline | 1 | 20 to 39 | 40 and more | 1 |
| N1 Vaal River | Verkeerdevelei | Mainline | 1 | 20 to 39 | 40 and more | 1, 2 and 4 |
| | Grasmere | Mainline | 1 | 20 to 39 | 40 and more | 1 |
| N1 Great North | Capricorn | Mainline | 1 | 20 to 39 | 40 and more | 1, 2 and 4 |
| | Baobab | Mainline | 1 | 20 to 39 | 40 and more | 1, 2 and 4 |
| N2 South Coast | Izotsha | Ramp | 3 | 20 to 39 | 40 and more | 1 |
| | Oribi | Mainline | 3 | 20 to 39 | 40 and more | 1 |
| | | Ramp (S) | 3 | 20 to 39 | 40 and more | 1 |
| | | Ramp (N) | 3 | 20 to 39 | 40 and more | 1 |
| | Umtentweni | Ramp | 3 | 20 to 39 | 40 and more | 1 |
| N2 North Coast | King Shaka Airport | Ramp | 1 | 10 to 19 | 20 and more | 1 |
| | oThongathi | Mainline | 1 | 20 to 39 | 40 and more | 1 |
| | | Ramp (S) | 1 | 20 to 39 | 40 and more | 1 |
| | | Ramp (N) | 1 | 20 to 39 | 40 and more | 1 |
| | Mvoti | Mainline | 1 | 20 to 39 | 40 and more | 1 |
| | Mandini | Ramp | 1 | 20 to 39 | 40 and more | 1 |
| | Dokodweni | Ramp | 1 | 20 to 39 | 40 and more | 1 |
| | Mtunzini | Mainline | 1 | 20 to 39 | 40 and more | 1 |
| | | Ramp (S) | 1 | 20 to 39 | 40 and more | 1 |
| | | Ramp (N) | 1 | 20 to 39 | 40 and more | 1 |
| N3 Mariannhill | Mariannhill | Mainline | 1 | 20 to 39 | 40 and more | 1 |
| N4 Magalies | Pelindaba | Mainline | 1 | 20 to 39 | 40 and more | 1 |
| | Quagga | Mainline | 1 | 20 to 39 | 40 and more | 1 |
| N17 | Gosforth | Mainline | 1 | 35 to 69 | 70 and more | 1 |
| | | Ramp (W) | 1 | 35 to 69 | 70 and more | 1 |
| | | Ramp (E) | 1 | 35 to 69 | 70 and more | 1 |
| | Dalpark | Mainline | 1 | 35 to 69 | 70 and more | 1 |
| R30/R730/R34 | Brandfort | Mainline | 1 | 20 to 39 | 40 and more | 1, 2 and 4 |

*The relevant frequent user discount is applied to the value of the total number of passages completed within the stipulated period.

| TABLE 5.2: FREQUENT USER DISCOUNT – TYPE B | | | | | | |
|---|-----------|----------|----------------|----------------------------------|-----------|-------------------|
| TOLL ROAD | PLAZA | | CALENDAR MONTH | DISCOUNT FOR THE NO. OF PASSAGES | | TOLL TARIFF TABLE |
| | | | | Passages per month | Discount* | |
| N17 | Leandra | Mainline | 1 | 1 to 15 | 0% | 1 and 2 |
| | | Ramp | 1 | 16 to 20 | 40% | |
| | Trichardt | Mainline | 1 | 21 to 30 | 55% | |
| | Ermelo | Mainline | 1 | 31 and more | 70% | |

*The frequent user discount as indicated only applies on the passages undertaken in the specific “passages per month” range at a specific toll plaza.

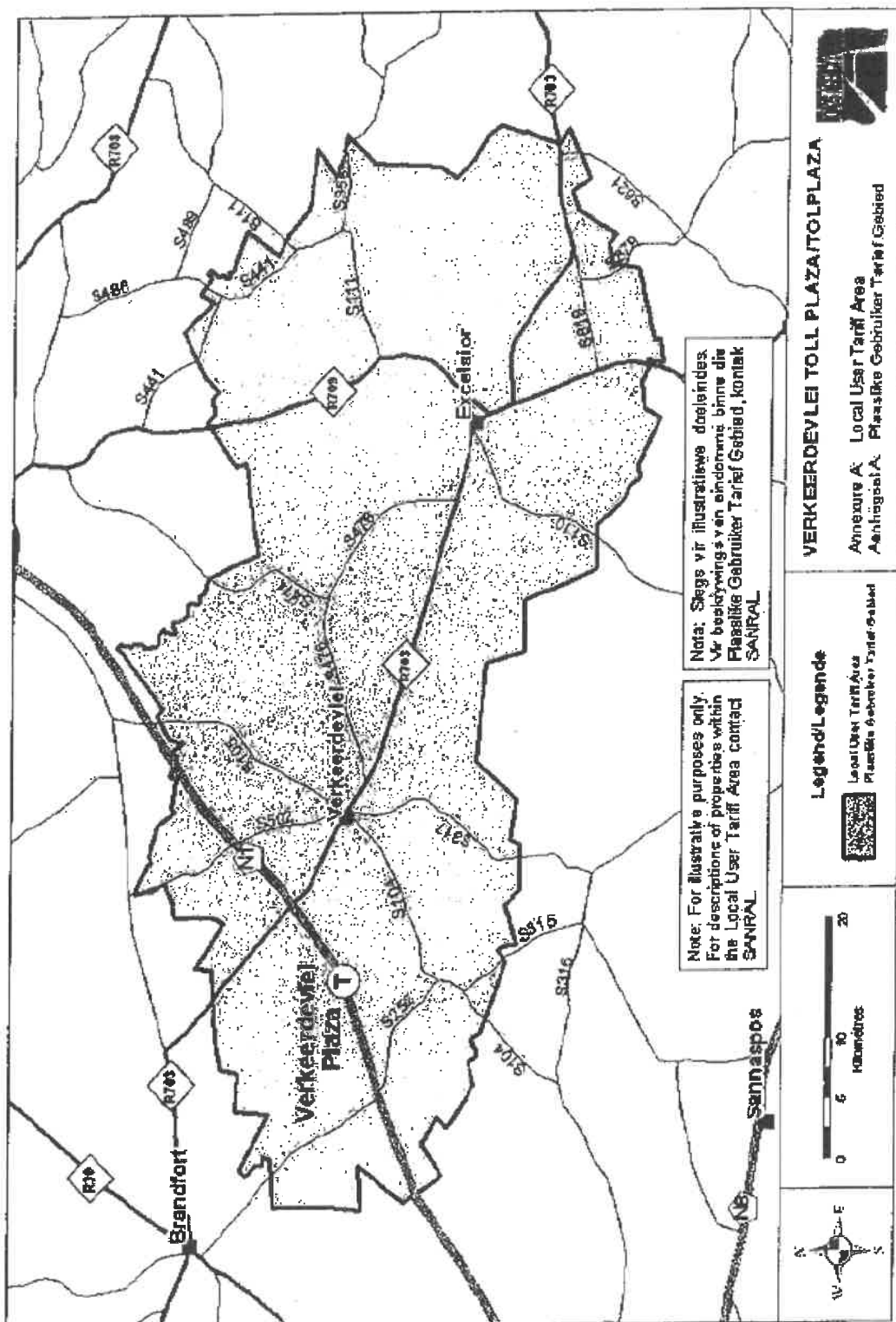
A valid SANRAL Tag (“Tolskyfie”) must be locally registered and presented for payment at the qualifying toll plaza to qualify for Frequent-, Local- or Public Transport User Discount.

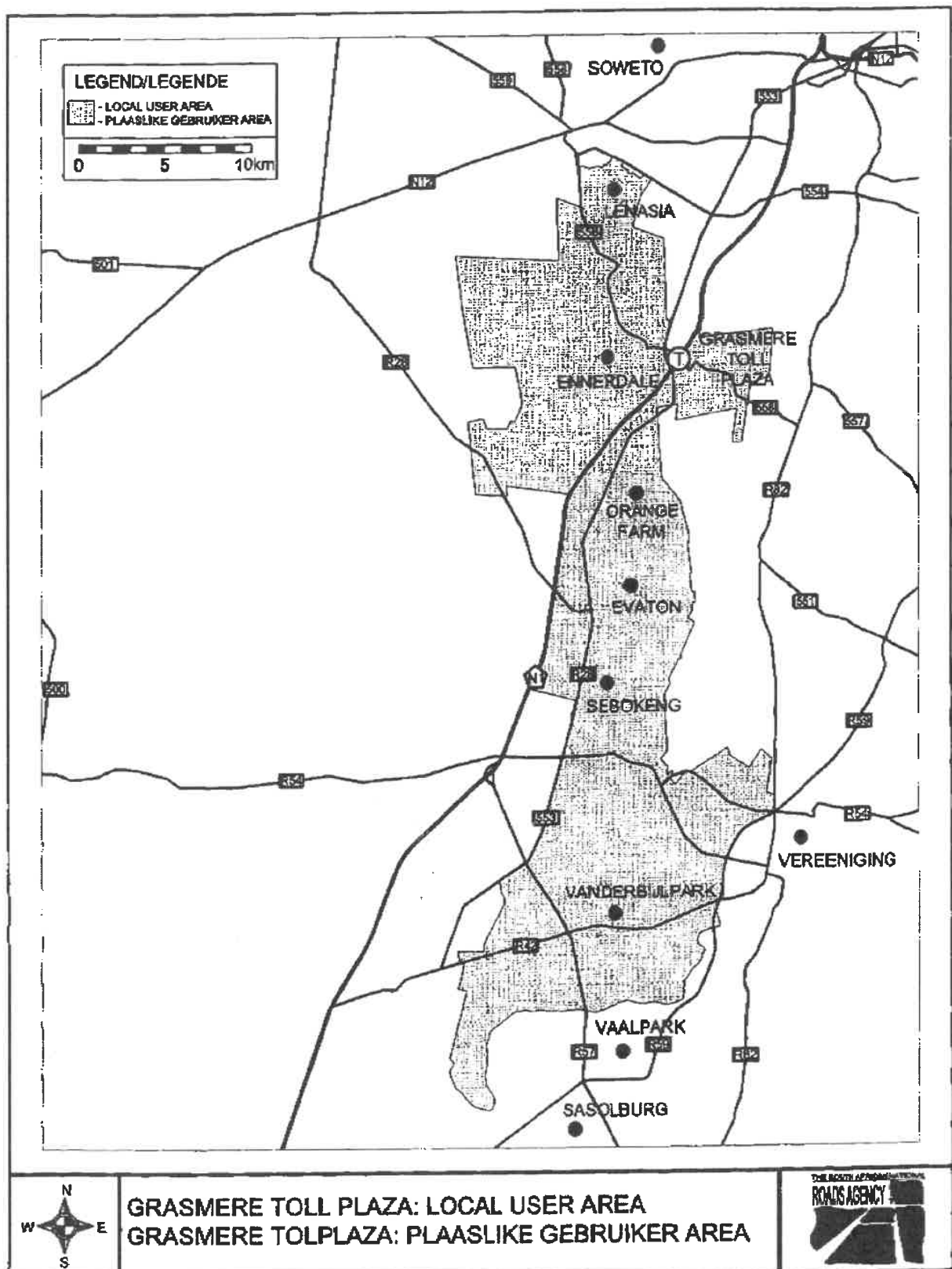
7. OPERATIONAL HOURS

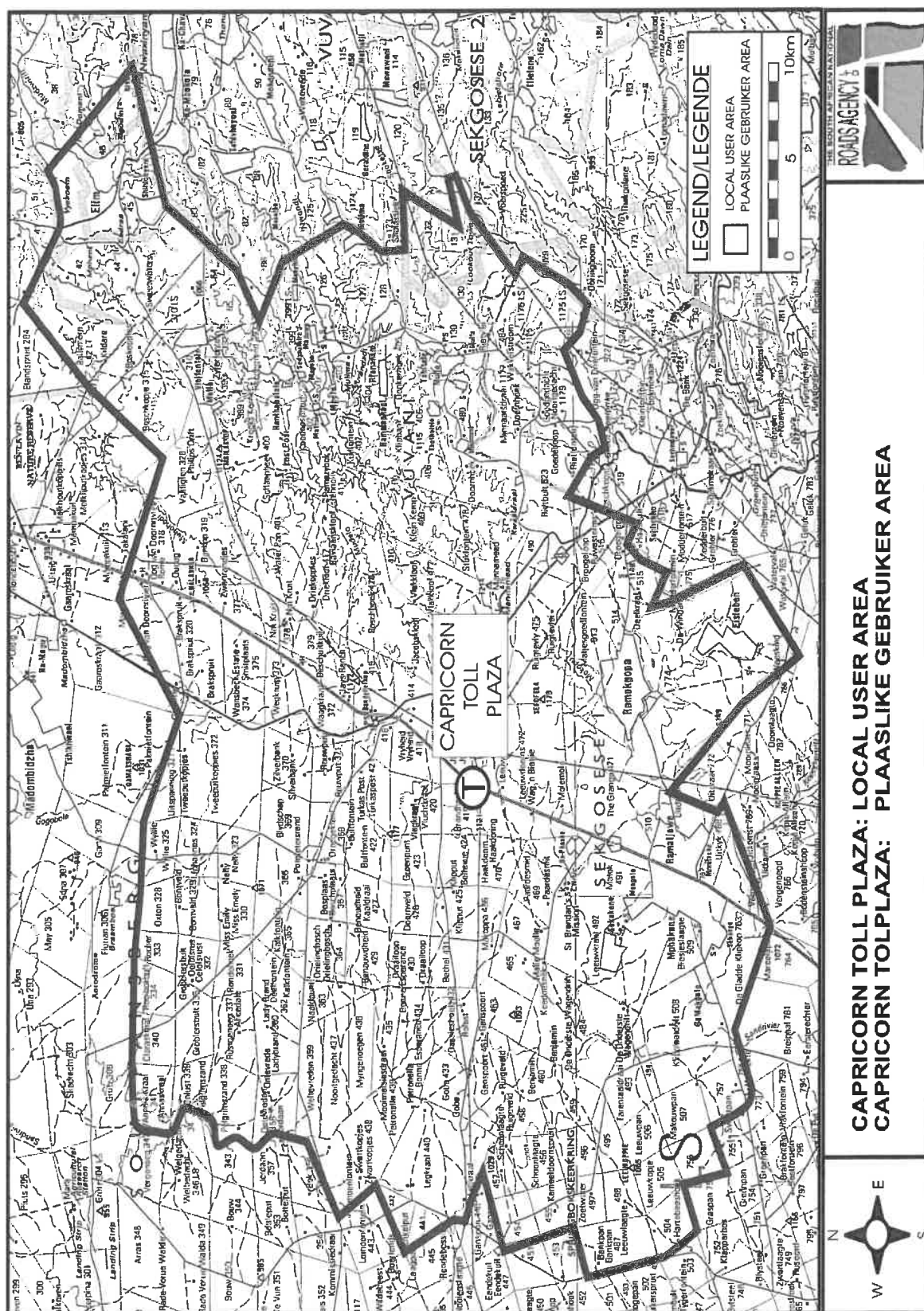
- 7.1 The said toll roads shall be open to traffic for 24 hours a day.

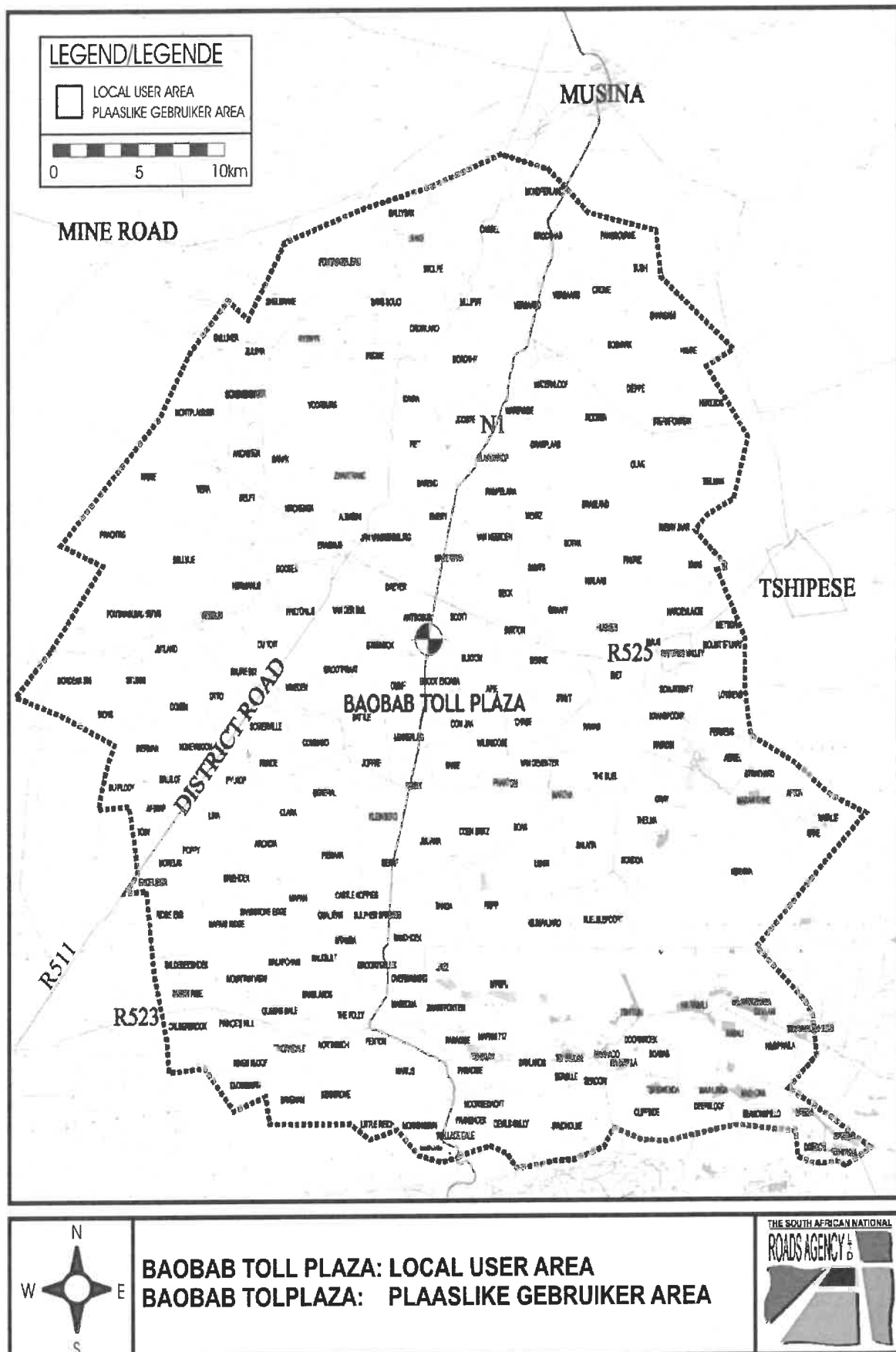
8. EFFECTIVE DATE

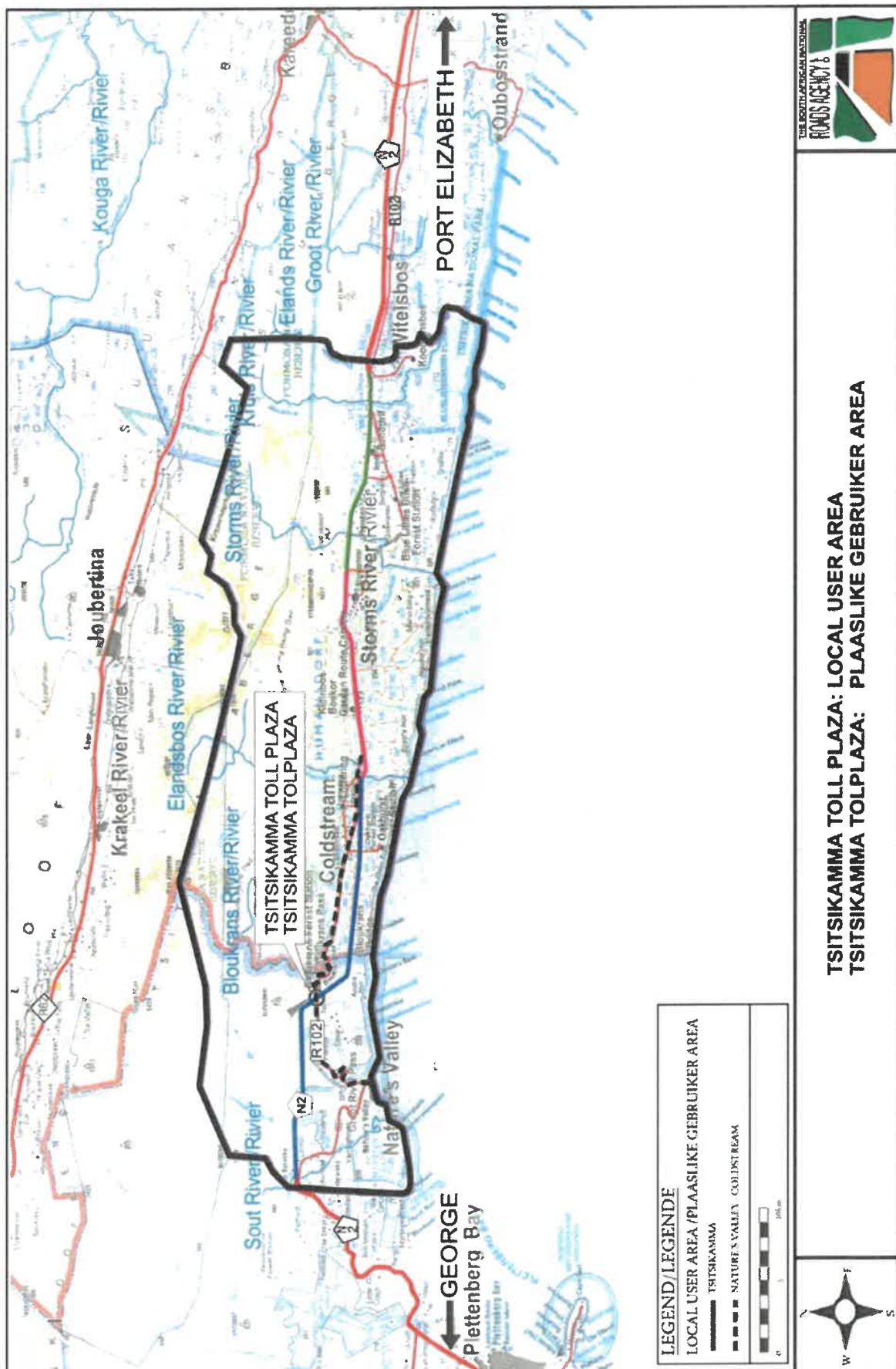
- 8.1 The date and time from which the said amounts of toll shall become payable, shall be 1 March 2025 at 00:00.

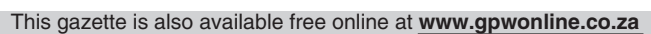


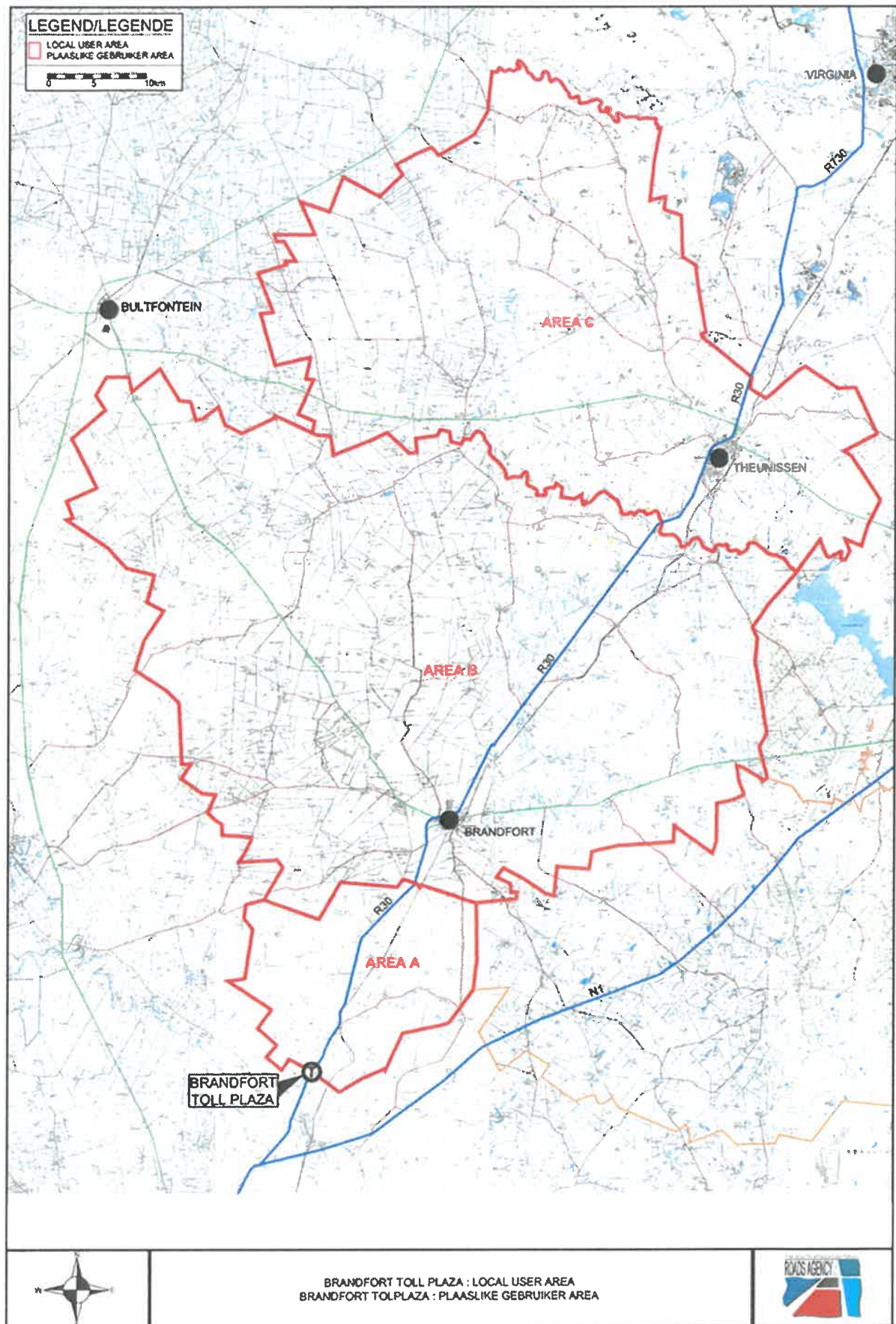












DEPARTEMENT VAN VERVOER

NO. 5853

7 Februarie 2025

DIE SUID-AFRIKAANSE NASIONALE PADAGENTSKAP MSB BEPERK

HUGENOTE, VAALRIVIER, VERRE NOORD, TSITSIKAMMA, SUIDKUS, NOORDKUS, MARIANNHILL, MAGALIES, N17 EN R30/R730/R34 TOLPAAIE: PUBLISERING VAN DIE TOLBEDRAE VIR DIE VERSKILLENDIGE KATEGORIEë VAN MOTORVOERTUIE, EN DIE DATUM EN TYD VANAF DIE TOLBEDRAE BETAALBAAR WORD

Die Hoof van die Departement maak hierby, kragtens die bepalings van artikel 28(4) saamgelees met artikel 27(3) van Die Suid-Afrikaanse Nasionale Padagentskap Beperk en Nasionale Paaie Wet, 1998 (Wet Nr. 7 van 1998) [die Wet], bekend dat die tolbedrae wat kragtens artikel 27(1)(b) van die Wet gehef sal word by die tolplazas geleë op die Hugenote, Vaalrivier, Verre Noord, Tsitsikamma, Suidkus, Noordkus, Mariannhill, Magalies, N17 en R30/R730/R34 Tolpaaie, en die datum en tyd vanaf die tolbedrae betaalbaar word, kragtens artikel 27(3)(a) van die Wet, deur die Minister van Vervoer bepaal is, en dat genoemde bedrae kragtens artikel 27(3)(b) en (d) van die Wet gehef sal word, soos in die Bylae uiteengesit.



Adv. James Mlawu

DIREKTEUR-GENERAAL: VERVOER

BYLAE**1. WOORDOMSKRYWINGS**

Die volgende woorde en uitdrukkings sal die betekenisse hê soos uiteengesit, tensy dit uit die samehang anders blyk.

- 1.1 **“Abnormale voertuig”** beteken ‘n motorvoertuig wat die wettige afmetings, soos beskryf in die Padverkeerswet, 1996 (Wet Nr. 93 van 1996), soos gewysig, of in enige ander wet oorskry.
- 1.2 **“As”** beteken ‘n toestel of stel toestelle, hetsy onafgebroke oor die breedte van die voertuig of nie, waarom die wiele van die voertuig ronddraai en wat so geplaas is dat wanneer die voertuig reguit vorentoe ry, die vertikale hartlyne van sodanige wiele in een vertikale vlak reghoekig met die langshartlyn van sodanige voertuig is. As sal ook ‘n as insluit waarvan die wiele opgelig en nie in kontak met die padoppervlak is nie.
- 1.3 **“Swaar as”** beteken ‘n as waarvan die wiele toegerus is met bande met ‘n grootte (spanranddeursnee) groter as 406,4 millimeter (16 duim), of ‘n as met meer as twee (2) wiele, ongeag die bandgrootte, maar nie ‘n as van ‘n motorfiets, ‘n motordriewiel of ‘n motorkar nie.
- 1.4 **“Swaar voertuig”** beteken ‘n motorvoertuig met minstens een swaar as en/of ‘n motorvoertuig wat ontwerp of aangepas is uitsluitlik of hoofsaaklik vir die vervoer van meer as sestig (16) persone.
- 1.5 **“Ligte afleweringsvoertuig”** beteken ‘n motorvoertuig wat ontwerp of aangepas is vir die vervoer van persone en vrag met geen swaar as soos omskryf in paragraaf 1.3 hierbo nie.
- 1.6 **“Ligte voertuig”** beteken ‘n motorvoertuig, uitgesonderd ‘n swaar voertuig.
- 1.7 **“Motorkar”** beteken ‘n motorvoertuig, uitgesonderd ‘n motorfiets of motordriewiel, wat ontwerp of aangepas is uitsluitlik of hoofsaaklik vir die vervoer van hoogstens sestig (16) persone, maar uitgesluit enige voertuig met meer as twee (2) wiele, ongeag die bandgrootte, op enige as.
- 1.8 **“Motorfiets”** beteken ‘n motorvoertuig met twee wiele en ook enige sodanige voertuig waaraan ‘n syspan geheg is.
- 1.9 **“Motordriewiel”** beteken ‘n motorvoertuig, uitgesonderd ‘n motorfiets met syspan, wat drie wiele het en ontwerp is om bestuur te word deur middel van die tipe kontroles waarmee ‘n motorfiets gewoonlik toegerus is.
- 1.10 **“Motorvoertuig”** beteken ‘n entiteit bestaande uit een of meer meganies/elektries aangedrewe eenhede met of sonder sleepwa of sleepwaens wat fisies aan mekaar gekoppel is deur middel van sleepstange, sleeptoue of meganiese geleding en sluit onder andere in:
 - (a) ‘n motorfiets;
 - (b) ‘n motordriewiel;
 - (c) ‘n motorkar;
 - (d) ‘n voertuig met pedale en met ‘n meganies/elektries aangedrewe eenheid as ‘n integreerende deel daarvan of daaraan vasgeheg en wat ontwerp of aangepas is om of deur middel van sodanige pedale of deur middel van die meganiese/elektriese eenheid of deur albei voortbeweeg te word; en
 - (e) ‘n ligte afleweringsvoertuig (‘n bakkie).

- 1.11 **“Sleepwa”** beteken ‘n voertuig wat nie selfaangedrewe is nie en wat ontwerp of aangepas is om deur ‘n motorvoertuig getrek te word, maar sluit nie ‘n syspan wat aan ‘n motorfiets vasgeheg is in nie.

2. KATEGORIEË VAN MOTORVOERTUIE

Klas 1: *Ligte voertuie:*

Ligte voertuie is motorvoertuie, uitgesonderd swaar voertuie soos hierbo omskryf, met of sonder sleepwa, en sluit motorfiets, motordriewiele en motorkarre in.

Klas 2: *Medium swaar voertuie:*

Medium swaar voertuie, is swaar voertuie, soos hierbo omskryf, met twee asse.

Klas 3: *Groot swaar voertuie:*

Groot swaar voertuie, is swaar voertuie, soos hierbo omskryf, met drie of vier asse.

Klas 4: *Ekstra groot swaar voertuie:*

Ekstra groot swaar voertuie, is swaar voertuie, soos hierbo omskryf, met vyf of meer asse.

3. TOLTARIEF

- 3.1 Die tolbedrae vir die verskillende kategorieë motorvoertuie betaalbaar by die tolplazas geleë op die Hugenote, Vaalrivier, Verre Noord, Tsitsikamma, Suidkus, Noordkus, Mariannhill, Magalies, N17 en R30/R730/R34 Tolpaaie, vir die gebruik van 'n tolpad, of enige deel daarvan, is uiteengesit in Tabel 1.

TABEL 1: TOLTARIEWE EFFEKTIEF 1 MAART 2025 (15% BTW INGESLUIT)

| TOLPAD | PLAZA | | KLAS 1 | KLAS 2 | KLAS 3 | KLAS 4 |
|----------------|--------------------|-----------------|--------|---------|---------|---------|
| N1 Hugenote | Huguenot | Hooflyn | R53.00 | R146.00 | R229.00 | R371.00 |
| N1 Vaalrivier | Verkeerdevlei | Hooflyn | R76.00 | R152.00 | R229.00 | R321.00 |
| | Vaal | Hooflyn | R89.00 | R167.00 | R200.00 | R267.00 |
| | Grasmere | Hooflyn | R27.00 | R80.00 | R92.00 | R122.00 |
| | | Op-en Afrit (S) | R14.00 | R40.00 | R46.00 | R61.00 |
| | | Op-en Afrit (N) | R14.00 | R40.00 | R46.00 | R61.00 |
| N1 Verre Noord | Kranskop | Mainline | R60.00 | R152.00 | R203.00 | R249.00 |
| | | Ramp | R16.00 | R44.00 | R52.00 | R78.00 |
| | Nyl | Mainline | R77.00 | R144.00 | R174.00 | R233.00 |
| | | Ramp | R24.00 | R44.00 | R52.00 | R67.00 |
| | Sebetiela | Ramp | R24.00 | R44.00 | R56.00 | R74.00 |
| | Capricorn | Mainline | R62.00 | R170.00 | R198.00 | R248.00 |
| | Baobab | Mainline | R60.00 | R163.00 | R224.00 | R269.00 |
| N2 Tsitsikamma | Tsitsikamma | Hooflyn | R71.00 | R178.00 | R424.00 | R600.00 |
| | | Op-en Afrit | R71.00 | R178.00 | R424.00 | R600.00 |
| N2 Suidkus | Izotsha | Op-en Afrit | R12.00 | R22.00 | R30.00 | R52.00 |
| | Oribi | Hooflyn | R40.00 | R70.00 | R96.00 | R157.00 |
| | | Op-en Afrit (S) | R18.00 | R33.00 | R44.00 | R70.00 |
| | | Op-en Afrit (N) | R21.00 | R37.00 | R52.00 | R96.00 |
| | Umtentweni | Op-en Afrit | R17.00 | R30.00 | R41.00 | R67.00 |
| N2 Noordkus | King Shaka Lughawe | Oprit | R8.00 | R16.00 | R25.00 | R33.00 |
| | oThongathi | Hooflyn | R15.00 | R31.00 | R41.00 | R59.00 |
| | | Op-en Afrit (S) | R7.50 | R17.00 | R20.00 | R30.00 |
| | | Op-en Afrit (N) | R7.50 | R17.00 | R20.00 | R30.00 |
| | Mvoti | Hooflyn | R18.00 | R50.00 | R67.00 | R101.00 |
| | Mandini | Op-en Afrit | R10.00 | R19.00 | R22.00 | R30.00 |
| | Dokodweni | Op-en Afrit | R26.00 | R52.00 | R59.00 | R81.00 |
| | Mtunzini | Hooflyn | R62.00 | R118.00 | R141.00 | R210.00 |
| | | Op-en Afrit (S) | R51.00 | R96.00 | R115.00 | R166.00 |
| | | Op-en Afrit (N) | R11.00 | R22.00 | R26.00 | R43.00 |
| N3 Mariannhill | Mariannhill | Hooflyn | R16.00 | R29.00 | R35.00 | R55.00 |
| N4 Magalies | Pelindaba | Hooflyn | R8.00 | R15.00 | R20.00 | R26.00 |
| | Quagga | Hooflyn | R6.00 | R11.00 | R15.00 | R20.00 |
| N17 | Gosforth | Hooflyn | R16.00 | R44.00 | R48.00 | R67.00 |
| | | Op-en Afrit (W) | R9.00 | R19.00 | R24.00 | R31.00 |
| | | Op-en Afrit (O) | R7.50 | R28.00 | R30.00 | R41.00 |
| | Dalpark | Hooflyn | R15.00 | R31.00 | R41.00 | R56.00 |
| | Denne | Op-en Afrit | R13.00 | R26.00 | R33.00 | R44.00 |
| | Leandra | Hooflyn | R49.00 | R123.00 | R184.00 | R244.00 |
| | | Op-en Afrit | R29.00 | R74.00 | R110.00 | R147.00 |
| | Trichardt | Hooflyn | R24.00 | R61.00 | R93.00 | R122.00 |
| | Ermelo | Hooflyn | R44.00 | R110.00 | R164.00 | R219.00 |
| R30/R730/R34 | Brandfort | Hooflyn | R61.00 | R121.00 | R182.00 | R256.00 |

4. PLAASLIKE GEBRUIKER TOLTARIEF

- 4.1 'n Plaaslike gebruiker toltarief, vir verskillende kategorieë van motorvoertuie, word toegestaan, onderhewig aan die terme en voorwaardes van die Suid-Afrikaanse Nasionale Padagentskap MSB Beperk (SANRAL) (beskikbaar by die Tolplazas), aan geregistreerde *bona fide* inwoners, werkgewers of werknemers geleë binne 'n goedgekeurde plaaslike gebruiker area, na suksesvolle aansoek by die toepaslike toloperateur.
- 4.2 Die plaaslike gebruiker toltariewe vir die plaaslike gebruiker areas, soos aangedui op die verskeie kaarte aangeheg by hierdie Kennisgewing en waarvan 'n afskrif by SANRAL verkry kan word, vir die verskillende kategorieë van motorvoertuie, betaalbaar by die Verkeerdevelei, Grasmere, Capricorn, Baobab, Tsitsikamma, Leandra, Trichardt, Ermelo en Brandfort Tolplazas, geleë op die Vaalrivier, Verre Noord, Tsitsikamma, N17 en R30/R730/R34 Tolpaaie, is uiteengesit in Tabel 2.

TABEL 2: PLAASLIKE GEBRUIKER TOLTARIEF – TIPE A EFFEKTIEF 1 MAART 2025 (15% BTW INGESLUIT)

| TOLPAD | PLAZA | | PLAASLIKE GEBRUIKER AREA | KLAS 1 | KLAS 2 | KLAS 3 | KLAS 4 |
|-------------------|----------------|-------------------------|--------------------------------------|--------|--------|---------|---------|
| N1 Vaalrivier | Verkeerdevelei | Hooflyn | Verkeerdevelei | R24.00 | R48.00 | R73.00 | R97.00 |
| | Grasmere | Hooflyn | Evaton Sebokeng Vanderbijlpark | R4.50 | | | |
| | | Op- en Afrit (S) | Ennerdale Lenasia South | R2.50 | | | |
| | | Op- en Afrit (N) | Ennerdale Lenasia South | R2.50 | | | |
| N1 Verre Noord | Capricorn | Hooflyn | Capricorn | R18.50 | R37.00 | R46.00 | R65.00 |
| | Baobab | Hooflyn | Baobab | R21.50 | R53.00 | R74.00 | R93.00 |
| | Baobab | Hooflyn | Tshipise | R31.50 | R79.00 | R111.00 | R142.00 |
| N2 Tsitsikamma | Tsitsikamma | Hooflyn Op- en Afrit | Tsitsikamma | R22.50 | | | |
| | | Hooflyn Op- en Afrit | Nature's Valley Coldstream | R11.00 | | | |
| N17 | Leandra | Hooflyn | Leandra | R31.00 | R78.00 | R117.00 | R155.00 |
| | | Op- en Afrit | Leandra | R18.50 | R47.00 | R70.00 | R93.00 |
| | Trichardt | Hooflyn | Trichardt | R13.00 | R32.00 | R49.00 | R65.00 |
| | Ermelo | Hooflyn | Ermelo | R23.00 | R60.00 | R87.00 | R116.00 |
| R30/R730/R34 | Brandfort | Hooflyn | Area A | R6.50 | R13.00 | R20.00 | R28.00 |
| | | | Area B | R13.00 | R26.00 | R39.00 | R55.00 |
| | | | Area C | R25.50 | R51.00 | R77.00 | R109.00 |

- 4.3 Die plaaslike gebruiker toltariewe vir die plaaslike gebruiker area, vir die verskillende kategorieë van motorvoertuie, betaalbaar by die Mvoti Tolplaza geleë op die Noordkus Tolpad, is uiteengesit in Tabel 3.

TABEL 3: PLAASLIKE GEBRUIKER TOLTARIEF – TIPE B EFFEKTIEF 1 MAART 2025 (15% BTW INGESLUIT)

| TOLPAD | PLAZA | | PLAASLIKE GEBRUIKER AREA | KLAS 1 | KLAS 2 | KLAS 3 | KLAS 4 |
|----------------|-----------|---------|---|--------|--------|--------|--------|
| N2 Noordkus | Mvoti | Hooflyn | KwaDukuza | R5.50 | R13.00 | R20.00 | R28.00 |
| N2 Noordkus | Dokodweni | Ramp | Mandeni Local Municipality wards 1, 2, 3, 8 and 9 | R4.00 | R8.00 | R10.00 | R13.00 |

5. PLAASLIKE OPENBARE VERVOER OPERATEUR TOLTARIEF

- 5.1 'n Plaaslike openbare vervoer operateur toltarief, vir Klas 1 motorvoertuie alleen, word toegestaan, onderhewig aan die terme en voorwaardes van SANRAL (beskikbaar by die Tolplazas), aan geregistreeerde *bona fide* plaaslike openbare vervoer operateurs wat binne 'n goedgekeurde plaaslike gebruiker area opereer, na suksesvolle aansoek by die toepaslike toloperateur.
- 5.2 Die plaaslike openbare vervoer operateur toltariewe vir die plaaslike gebruiker areas soos aangedui op die verskeie kaarte aangeheg by hierdie Kennisgewing en waarvan 'n afskrif by SANRAL verkry kan word, vir Klas 1 motorvoertuie alleen, betaalbaar by die Verkeerdevlei, Capricorn, Baobab en Brandfort Tolplazas geleë op die Vaalrivier, Verre Noord en R30/R730/R34 Tolpaaie, is uiteengesit in Tabel 4.

TABEL 4: PLAASLIKE OPENBARE VERVOER OPERATEUR TOLTARIEF EFFEKTIEF 1 MAART 2025 (15% BTW INGESLUIT)

| TOLPAD | PLAZA | | PLAASLIKE GEBRUIKER AREA | KLAS 1 |
|----------------|---------------|---------|-----------------------------|--------|
| N1 Vaalrivier | Verkeerdevlei | Hooflyn | Verkeerdevlei | R24.00 |
| N1 Verre Noord | Capricorn | Hooflyn | Capricorn | R18.50 |
| | Baobab | Hooflyn | Baobab | R20.00 |
| R30/R730/R34 | Brandfort | Hooflyn | Areas A, B & C | R12.00 |

6. GEREELDE GEBRUIKER AFSLAG

- 6.1 By spesifieke tolplazas, word 'n gereelde gebruiker afslag op die tolbedrag, alleenlik vir Klas 1 motorvoertuie toegestaan, onderhewig aan die terme en voorwaardes van SANRAL (beskikbaar by die Tolplazas), aan geregistreeerde gereelde gebruikers wat 'n voorgeskrewe aantal deurgange binne 'n bepaalde periode voltooi, na suksesvolle aansoek by die toepaslike toloperateur. By sommige van die spesifieke tolplazas, mag 'n geregistreeerde *bona fide* plaaslike gebruiker en 'n geregistreeerde *bona fide* plaaslike openbare vervoer operateur ook registreer as 'n gereelde gebruiker. Die gereelde gebruiker afslag word toegepas, na gelang van die aantal deurgange voltooi binne die bepaalde periode, of aan die waarde van die totale aantal deurgange, of aan die spesifieke reeks van deurgange.
- 6.2 Die gereelde gebruiker afslae vir die spesifieke tolplazas geleë op die Hugenote, Vaalrivier, Verre Noord, Suidkus, Noordkus, Mariannhill, Magalies, N17 en R30/R730/R34 Tolpaaie, vir Klas 1 motorvoertuie alleen, na gelang van die aantal deurgange voltooi binne die bepaalde periode, op die tolbedrae soos vermeld in die toepaslike tabelle, is uiteengesit in Tabelle 5.1 en 5.2.

TABEL 5.1: GEREELDE GEBRUIKER AFSLAG – TIPE A

| TOLPAD | PLAZA | | KALENDER MAAND | AFSLAG NA GELANG VAN AANTAL DEURGANGE | | TOLTARIEF TABEL |
|-------------------|-----------------------|------------------|-------------------|---|------------|--------------------|
| | | | | 20%* | 40%* | |
| N1 Hugenote | Hugenote | Hooflyn | 1 | 20 tot 39 | 40 en meer | 1 |
| N1 Vaalrivier | Verkeerdevlei | Hooflyn | 1 | 20 tot 39 | 40 en meer | 1, 2 en 4 |
| | Grasmere | Hooflyn | 1 | 20 tot 39 | 40 en meer | 1 |
| N1 Verre Noord | Capricorn | Hooflyn | 1 | 20 tot 39 | 40 en meer | 1, 2 en 4 |
| | Baobab | Hooflyn | 1 | 20 tot 39 | 40 en meer | 1, 2 en 4 |
| N2 Suidkus | Izotsha | Op- en Afrit | 3 | 20 tot 39 | 40 en meer | 1 |
| | Oribi | Hooflyn | 3 | 20 tot 39 | 40 en meer | 1 |
| | | Op- en Afrit (S) | 3 | 20 tot 39 | 40 en meer | 1 |
| | | Op- en Afrit (N) | 3 | 20 tot 39 | 40 en meer | 1 |
| | Umtentweni | Op- en Afrit | 3 | 20 tot 39 | 40 en meer | 1 |
| N2 Noordkus | King Shaka Lughawe | Oprit | 1 | 10 tot 19 | 20 en meer | 1 |
| | oThongathi | Hooflyn | 1 | 20 tot 39 | 40 en meer | 1 |
| | | Op- en Afrit (S) | 1 | 20 tot 39 | 40 en meer | 1 |
| | | Op- en Afrit (N) | 1 | 20 tot 39 | 40 en meer | 1 |
| | Mvoti | Hooflyn | 1 | 20 tot 39 | 40 en meer | 1 |
| | Mandini | Op- en Afrit | 1 | 20 tot 39 | 40 en meer | 1 |
| | Dokodweni | Op- en Afrit | 1 | 20 tot 39 | 40 en meer | 1 |
| | Mtunzini | Hooflyn | 1 | 20 tot 39 | 40 en meer | 1 |
| | | Op- en Afrit (S) | 1 | 20 tot 39 | 40 en meer | 1 |
| | | Op- en Afrit (N) | 1 | 20 tot 39 | 40 en meer | 1 |
| N3 Mariannhill | Mariannhill | Hooflyn | 1 | 20 tot 39 | 40 en meer | 1 |
| N4 Magalies | Pelindaba | Hooflyn | 1 | 20 tot 39 | 40 en meer | 1 |
| | Quagga | Hooflyn | 1 | 20 tot 39 | 40 en meer | 1 |
| N17 | Gosforth | Hooflyn | 1 | 35 tot 69 | 70 en meer | 1 |
| | | Op- en Afrit (W) | 1 | 35 tot 69 | 70 en meer | 1 |
| | | Op- en Afrit (O) | 1 | 35 tot 69 | 70 en meer | 1 |
| | Dalpark | Hooflyn | 1 | 35 tot 69 | 70 en meer | 1 |
| R30/R730/R34 | Brandfort | Hooflyn | 1 | 20 tot 39 | 40 en meer | 1, 2 en 4 |

*Die betrokke gereelde gebruiker afslag word toegepas aan die waarde van die totale deurgange voltooi binne die bepaalde period.

TABEL 5.2: GEREELDE GEBRUIKER AFSLAG – TIPE B

| TOLPAD | PLAZA | | KALENDER MAAND | AFSLAG NA GELANG VAN AANTAL DEURGANGE | | TOLTARIEF TABEL |
|--------|-----------|--------------|-------------------|---|---------|--------------------|
| | | | | Deurgange per maand | Afslag* | |
| N17 | Leandra | Hooflyn | 1 | 1 to 15 | 0% | 1 en 2 |
| | | Op- en Afrit | 1 | 16 to 20 | 40% | |
| | Trichardt | Hooflyn | 1 | 21 to 30 | 55% | |
| | Ermelo | Hooflyn | 1 | 31 en meer | 70% | |

*Die gereelde gebruiker afslag soos aangedui is slegs van toepassing op die deurgange wat in die spesifieke "deurgange per maand" reeks by 'n spesifieke tolplaza onderneem.

'n Geldige SANRAL Tolskyfie moet plaaslik geregistreer, en aangebied word as betaling, by die toepaslike tolplaza om te kwalifiseer vir Gereelde-, Plaaslike- of Openbare Vervoer Gebruikers, korting.

7. OPERASIONELE URE

- 7.1 Die genoemde tolpaai sal 24 uur per dag oop wees vir verkeer.

8. INWERKINGTREDINGSDATUM

- 8.1 Die datum en tyd wanneer die genoemde tolbedrae betaalbaar word, is 1 Maart 2025 om 00:00.

