
GOVERNMENT NOTICES • GOEWERMENTSKENNISGEWINGS

DEPARTMENT OF TRANSPORT

NO. 5674

13 December 2024

**THE SOUTH AFRICAN NATIONAL ROADS
AGENCY SOC LIMITED**Registration No: 1998/009584/30

DECLARATION AMENDMENT OF NATIONAL ROAD R410 SECTION 3

AMENDMENT OF DECLARATION No. 733 OF 2016.

By virtue of section 40(1)(b) of the South African National Roads Agency Limited and the National Roads Act 1998 (Act No. 7 of 1998), I hereby amend Declaration No. 733 of 2016 by substituting paragraph H of the Schedule, with the accompanying sheets 1 to 8 of Plan No. P1242/24.

In the town of Cala the R410 Section 3 enters the town from the south and then follows the street known as Titsa Street, at the time of declaration.

(National Road R410 Section 3: Cala – R58 Intersection)
MINISTER OF TRANSPORT

DEPARTEMENT VAN VERVOER

NO. 5674

13 Desember 2024

**DIE SUID-AFRIKAANSE NASIONALE
PADAGENTSKAP MSB BEPERK**

Registrasie No: 1998/009584/30

VERKLARING WYSIGING VAN NASIONALE PAD R410 SEKSIE 3

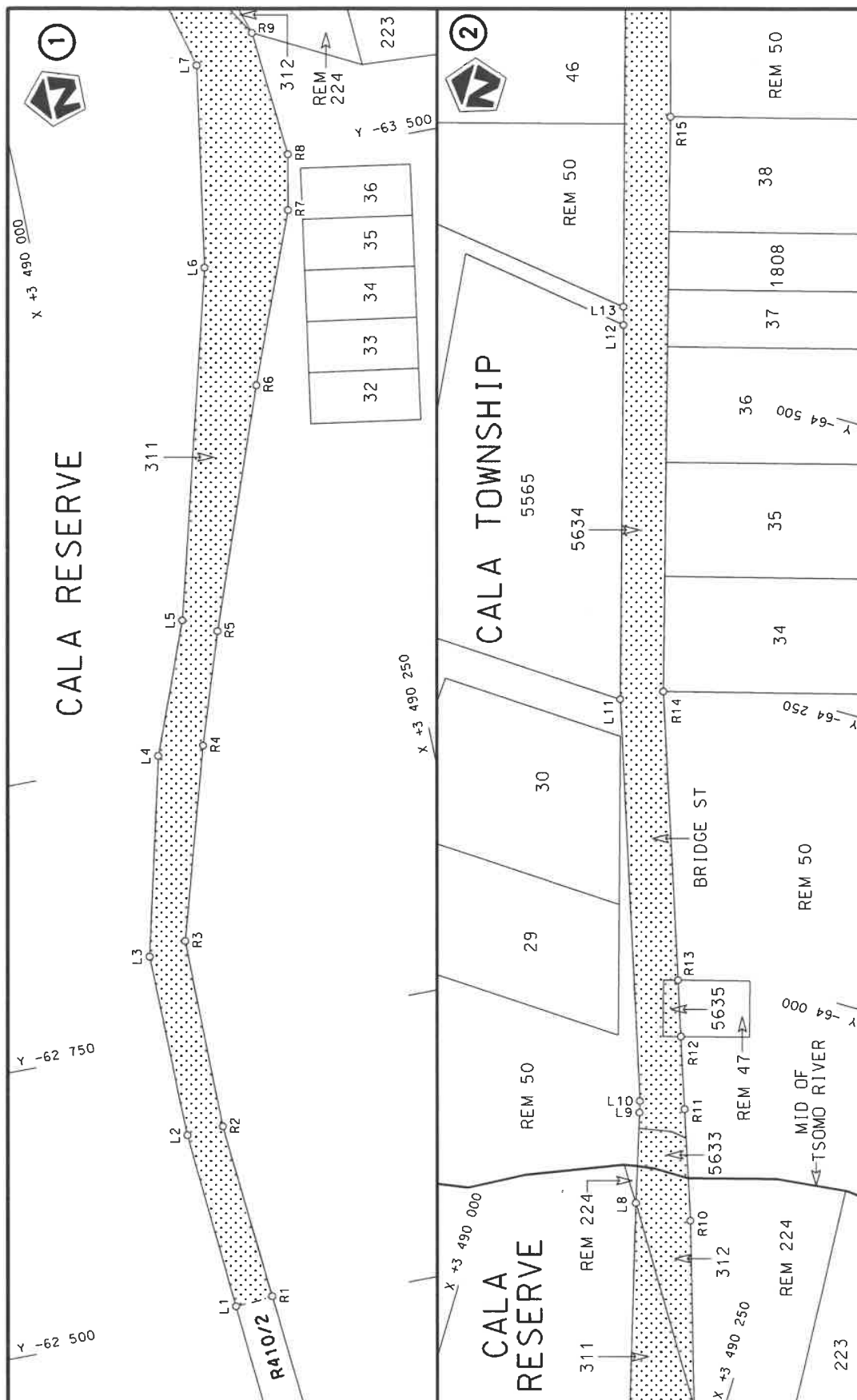
WYSIGING VAN VERKLARING No. 733 VAN 2016.


Kragtens Artikel 40(1)(b) van die Suid-Afrikaanse Nasionale Padagentskap Beperk en Nasionale Paaie Wet 1998 (Wet No. 7 van 1998), wysig ek hiermee Verklaring No. 733 van 2016 deur paragraaf H van die Skedule te vervang, met bygaande velle 1 tot 8 van Plan No. P1242/24.

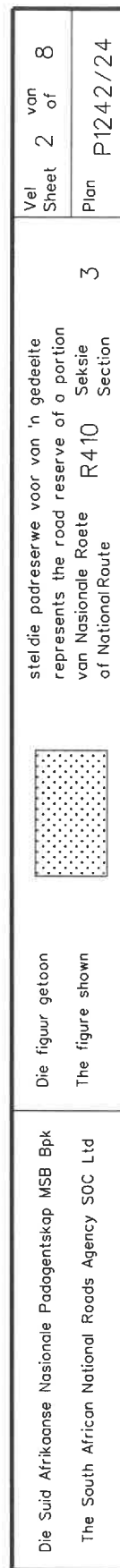
Die R410 Seksie 3 kom die dorp van Cala binne vanuit die suide en volg dan die straat bekend as Titsastraat, tydens datum van verklaring.

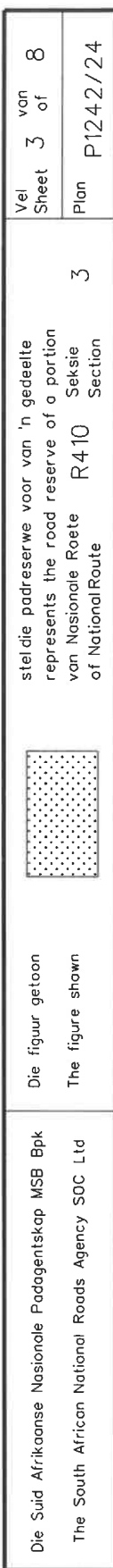
(Nasionale Pad R410 Seksie 3: Cala – R58 Interseksie)

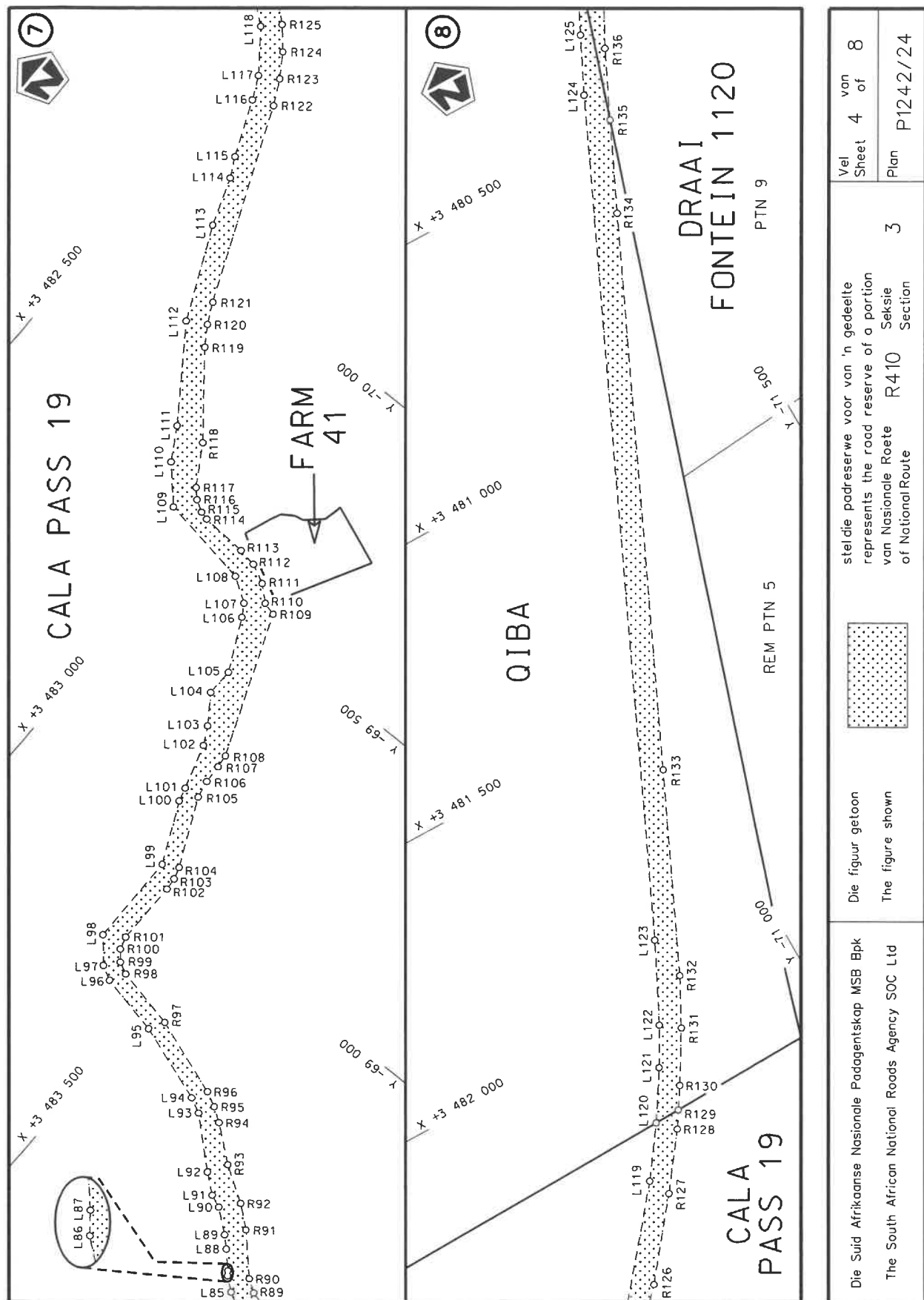

MINISTER VAN VERVOER

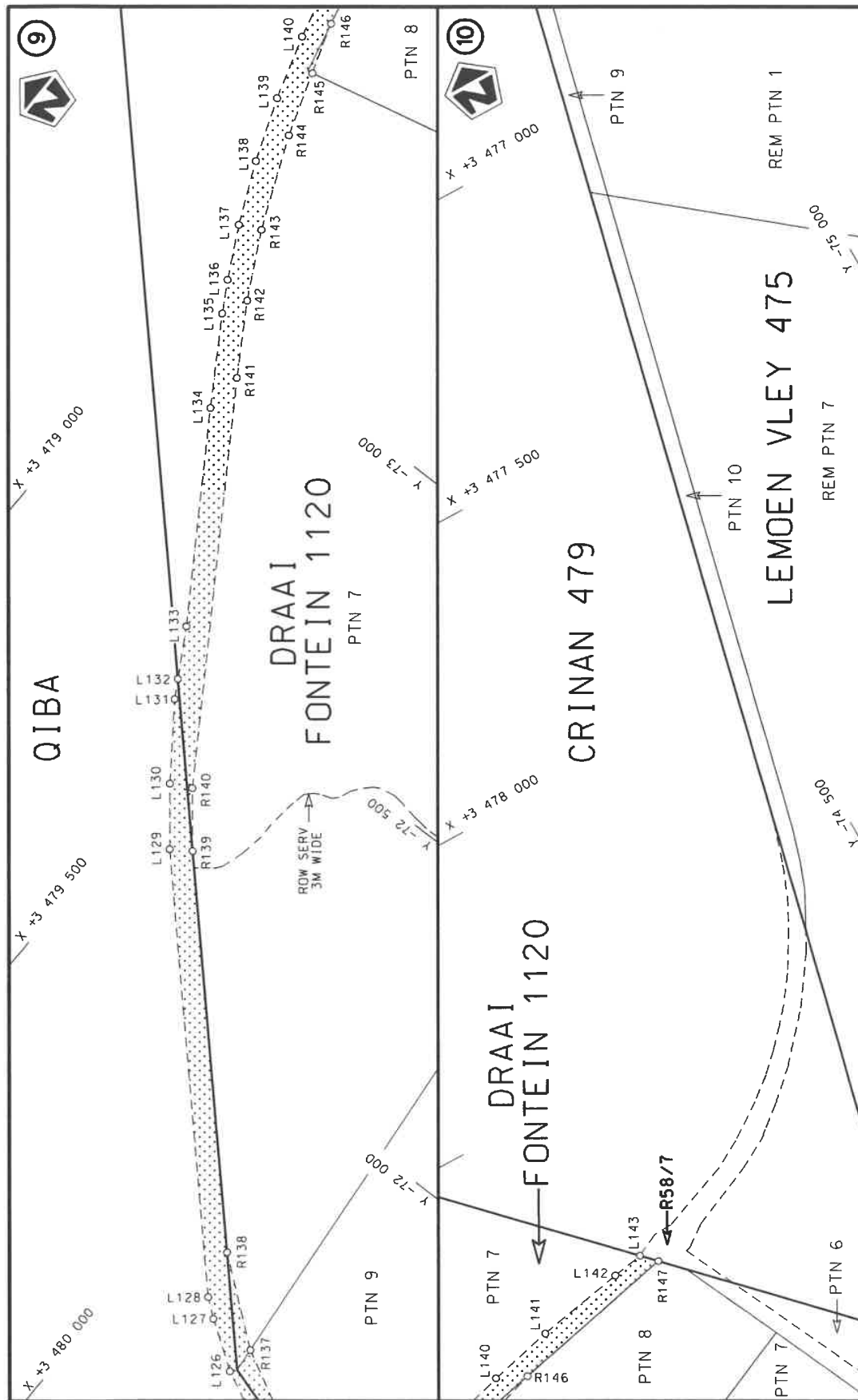


Die Suid Afrikaanse Nasionale Padagentskap MSB Bpk	Die figuur getoon		steldie padreserwe voor van 'n gedeelte represents the road reserve of a portion	Vel Sheet	1 of	8
The South African National Roads Agency SOC Ltd	The figure shown		van Nasionale Roete R410 of National Route	Plan	P1242/24	









Vel
Sheet 5 of 8
Plan P1242/24

stelt die padreserwe voor van 'n gedeelte
represents the road reserve of a portion
van Nasionale Roete R410 Seksie
of National Route of National Route Section



Die figuur getoon
The figure shown

Die Suid Afrikaanse Nasionale Padagentskap MSB Bpk
The South African National Roads Agency SOC Ltd

PADRESERWE KOÖRDINATE / ROAD RESERVE CO-ORDINATES						
LINKERKANT/LEFT HAND SIDE				REGTERKANT/RIGHT HAND SIDE		
	Y	X	WG 27°		Y	X
L1	-62 515.13	3 489 986.81		R1	-62 517.75	3 490 019.14
L2	-62 672.73	3 489 976.06		R2	-62 674.39	3 490 007.46
L3	-62 834.89	3 489 975.92		R3	-62 842.38	3 490 008.49
L4	-63 008.19	3 490 018.56		R4	-63 009.64	3 490 058.21
L5	-63 122.10	3 490 062.65		R5	-63 106.78	3 490 090.33
L6	-63 425.29	3 490 143.40		R6	-63 314.03	3 490 166.32
L7	-63 602.40	3 490 172.00		R7	-63 460.94	3 490 223.78
L8	-63 781.53	3 490 126.62		R8	-63 509.58	3 490 233.41
L9	-63 859.82	3 490 107.70		R9	-63 621.18	3 490 224.18
L10	-63 869.72	3 490 105.30		R10	-63 779.16	3 490 176.28
L11	-64 208.89	3 489 991.75		R11	-63 873.32	3 490 144.49
L12	-64 529.26	3 489 903.81		R12	-63 934.61	3 490 123.80
L13	-64 544.77	3 489 899.26		R13	-63 982.18	3 490 107.73
L14	-64 877.37	3 489 806.79		R14	-64 225.59	3 490 025.55
L15	-65 457.34	3 489 647.88		R15	-64 717.83	3 489 891.95
L16	-65 500.72	3 489 635.93		R16	-64 887.35	3 489 843.23
L17	-65 736.18	3 489 616.56		R17	-65 506.50	3 489 673.53
L18	-65 862.38	3 489 605.86		R18	-65 581.46	3 489 661.14
L19	-65 863.95	3 489 599.56		R19	-65 662.11	3 489 653.17
L20	-65 875.20	3 489 582.29		R20	-65 689.17	3 489 651.10
L21	-66 546.95	3 488 570.87		R21	-65 849.40	3 489 637.20
L22	-66 689.55	3 488 342.09		R22	-65 850.42	3 489 638.76
L23	-66 780.36	3 488 191.58		R23	-65 851.64	3 489 640.63
L24	-66 801.19	3 488 150.56		R24	-65 883.91	3 489 660.64
L25	-66 824.47	3 488 092.43		R25	-65 886.20	3 489 657.12
L26	-66 834.09	3 488 064.46		R26	-65 903.17	3 489 630.99
L27	-66 845.90	3 488 019.81		R27	-65 910.09	3 489 629.52
L28	-66 859.90	3 487 941.06		R28	-65 922.43	3 489 612.95
L29	-66 917.54	3 487 571.23		R29	-66 561.61	3 488 597.58
L30	-66 930.24	3 487 523.81		R30	-66 673.37	3 488 434.10
L31	-66 951.47	3 487 480.21		R31	-66 790.23	3 488 253.15
L32	-66 988.51	3 487 435.66		R32	-66 815.47	3 488 211.00
L33	-67 047.10	3 487 394.62		R33	-66 837.68	3 488 167.46
L34	-67 112.20	3 487 375.40		R34	-66 858.08	3 488 118.32
L35	-67 134.84	3 487 371.78		R35	-66 872.42	3 488 076.01
L36	-67 184.86	3 487 363.79		R36	-66 878.30	3 488 054.25
L37	-67 221.98	3 487 353.00		R37	-66 892.26	3 487 994.51
L38	-67 258.04	3 487 333.18		R38	-66 930.64	3 487 747.25
L39	-67 286.93	3 487 307.29		R39	-66 967.52	3 487 537.98
L40	-67 308.67	3 487 276.96		R40	-66 986.18	3 487 501.54
L41	-67 325.05	3 487 240.07		R41	-67 011.53	3 487 470.17
L42	-67 331.29	3 487 200.70		R42	-67 043.24	3 487 444.30
L43	-67 329.32	3 487 162.04		R43	-67 079.46	3 487 425.71
L44	-67 318.58	3 487 123.92		R44	-67 118.66	3 487 414.98
L45	-67 288.54	3 487 048.58		R45	-67 143.17	3 487 411.17
L46	-67 251.51	3 486 986.91		R46	-67 191.49	3 487 403.64
L47	-67 237.41	3 486 942.03		R47	-67 237.22	3 487 390.61
L48	-67 232.66	3 486 895.12		R48	-67 281.57	3 487 366.14
L49	-67 236.99	3 486 847.78		R49	-67 317.38	3 487 334.51
L50	-67 250.26	3 486 802.45		R50	-67 345.05	3 487 295.93
L51	-67 271.64	3 486 760.70		R51	-67 364.35	3 487 250.52
				Vel Sheet	6 Van of 8	P1242/24

PADRESERVE KOÖRDINATE / ROAD RESERVE CO-ORDINATES									
LINKERKANT/LEFT HAND SIDE					REGTERKANT/RIGHT HAND SIDE				
	Y		X	WG 27°		Y		X	
L52	-67 337.35	3 486	692.89		R52	-67 371.08	3 487	203.06	
L53	-67 485.92	3 486	592.23		R53	-67 369.16	3 487	155.55	
L54	-67 570.78	3 486	525.30		R54	-67 355.54	3 487	108.83	
L55	-67 618.56	3 486	467.95		R55	-67 296.80	3 486	966.92	
L56	-67 661.19	3 486	392.38		R56	-67 288.18	3 486	913.07	
L57	-67 706.44	3 486	304.10		R57	-67 276.26	3 486	870.93	
L58	-67 736.90	3 486	215.62		R58	-67 279.44	3 486	847.70	
L59	-67 744.61	3 486	167.44		R59	-67 313.78	3 486	787.91	
L60	-67 745.72	3 486	120.31		R60	-67 337.23	3 486	758.60	
L61	-67 742.83	3 486	072.91		R61	-67 365.98	3 486	733.96	
L62	-67 735.30	3 486	027.09		R62	-67 528.67	3 486	621.58	
L63	-67 612.21	3 485	552.47		R63	-67 594.85	3 486	571.85	
L64	-67 602.95	3 485	491.09		R64	-67 660.81	3 486	495.18	
L65	-67 606.38	3 485	428.54		R65	-67 710.28	3 486	407.66	
L66	-67 619.25	3 485	365.07		R66	-67 766.55	3 486	276.48	
L67	-67 624.63	3 485	351.87		R67	-67 786.84	3 486	203.13	
L68	-67 642.66	3 485	307.67		R68	-67 791.81	3 486	121.50	
L69	-67 675.42	3 485	254.17		R69	-67 787.85	3 486	067.20	
L70	-67 716.36	3 485	206.92		R70	-67 769.72	3 485	979.67	
L71	-67 756.84	3 485	172.32		R71	-67 664.78	3 485	558.23	
L72	-68 004.18	3 484	995.43		R72	-67 651.81	3 485	482.11	
L73	-68 169.01	3 484	870.24		R73	-67 652.59	3 485	434.73	
L74	-68 205.55	3 484	835.19		R74	-67 663.34	3 485	378.47	
L75	-68 238.82	3 484	796.79		R75	-67 689.82	3 485	312.27	
L76	-68 268.92	3 484	753.70		R76	-67 726.33	3 485	252.75	
L77	-68 292.86	3 484	711.49		R77	-67 787.96	3 485	200.09	
L78	-68 313.48	3 484	665.26		R78	-68 154.75	3 484	938.07	
L79	-68 423.48	3 484	384.45		R79	-68 197.93	3 484	904.12	
L80	-68 433.73	3 484	354.45		R80	-68 237.24	3 484	865.50	
L81	-68 441.30	3 484	323.95		R81	-68 266.48	3 484	833.86	
L82	-68 449.06	3 484	261.03		R82	-68 314.57	3 484	764.46	
L83	-68 457.06	3 484	034.76		R83	-68 354.39	3 484	686.73	
L84	-68 464.76	3 484	000.03		R84	-68 465.24	3 484	400.75	
L85	-68 483.85	3 483	968.83		R85	-68 476.86	3 484	367.35	
L86	-68 504.95	3 483	943.09		R86	-68 485.55	3 484	332.97	
L87	-68 512.58	3 483	937.10		R87	-68 493.81	3 484	262.66	
L88	-68 543.17	3 483	908.92		R88	-68 501.73	3 484	031.19	
L89	-68 562.27	3 483	889.09		R89	-68 509.63	3 484	002.55	
L90	-68 596.60	3 483	847.09		R90	-68 526.25	3 483	978.09	
L91	-68 606.64	3 483	823.29		R91	-68 594.80	3 483	914.01	
L92	-68 635.45	3 483	788.27		R92	-68 628.05	3 483	873.90	
L93	-68 712.58	3 483	703.98		R93	-68 669.92	3 483	808.43	
L94	-68 726.92	3 483	675.54		R94	-68 722.19	3 483	744.66	
L95	-68 779.05	3 483	530.10		R95	-68 740.27	3 483	718.72	
L96	-68 805.08	3 483	415.65		R96	-68 754.68	3 483	690.57	
L97	-68 819.75	3 483	388.87		R97	-68 807.63	3 483	545.63	
L98	-68 865.06	3 483	350.91		R98	-68 833.43	3 483	431.22	
L99	-69 038.60	3 483	349.66		R99	-68 844.74	3 483	408.94	
L100	-69 152.35	3 483	296.91		R100	-68 864.03	3 483	393.08	
L101	-69 178.63	3 483	289.77		R101	-68 888.07	3 483	386.29	
L102	-69 263.05	3 483	263.88		R102	-69 007.72	3 483	386.67	
					Vel	7	Van	8	P1242/24
					Sheet		of		

This gazette is also available free online at www.gpwonline.co.za