
GOVERNMENT NOTICES • GOEWERMENTSKENNISGEWINGS

DEPARTMENT OF TRANSPORT

NO. 5679

13 December 2024

**THE SOUTH AFRICAN NATIONAL ROADS
AGENCY SOC LIMITED****Registration No: 1998/009584/30**

**DECLARATION AMENDMENT OF NATIONAL ROAD N18 SECTION 4 AND DECLARATION OF
EXISTING PROVINCIAL ROAD P71 SECTION 8 THROUGH THE TOWN OF VRYBURG AS PART OF
NATIONAL ROAD N18 SECTION 4**

- i) By virtue of Section 40 (1)(a) of The South African National Road Agency Limited and National Roads Act 1998 (Act No. 7 of 1998), I hereby declare the section of Provincial Road P71 Section 8, commencing from its intersection with the street known as Market Street in Vryburg, at the time of declaration, and from there in a general northerly direction along the street known as Moffat Street at the time of declaration, as a National Road.
- ii) By virtue of section 40(1)(b) of the South African National Roads Agency Limited and the National Roads Act 1998 (Act No. 7 of 1998), I hereby amend Declaration No. 907 of 2010 by substituting it in its entirety, with the accompanying sheets 1 to 10 of Plan No. P1216/20.

(National Road N18 Section 4: Vryburg – Stella)
MINISTER OF TRANSPORT

DEPARTEMENT VAN VERVOER

NO. 5679

13 Desember 2024

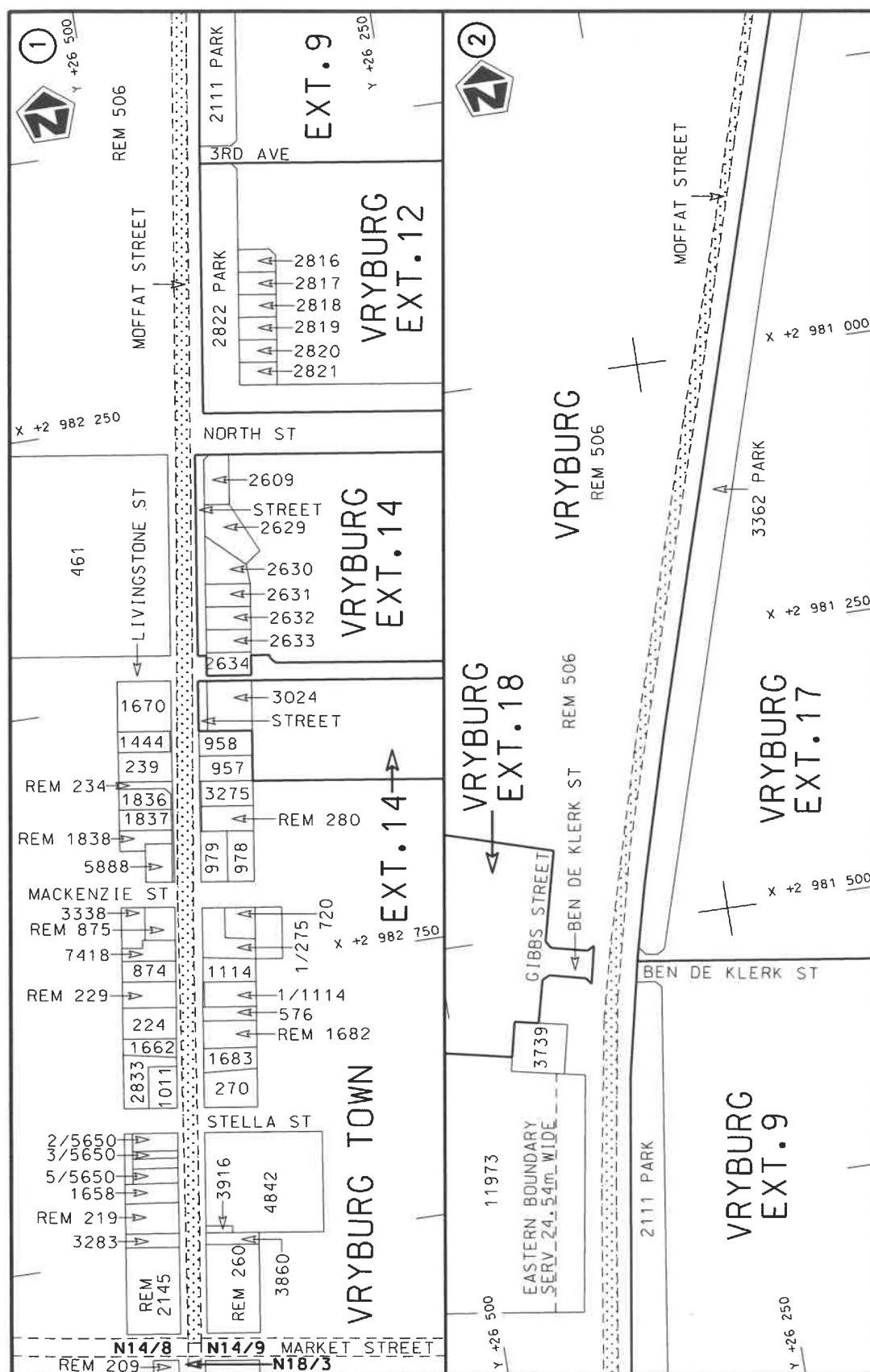
**DIE SUID-AFRIKAANSE NASIONALE
PADAGENTSKAP MSB BEPERK**


Registrasie No: 1998/009584/30

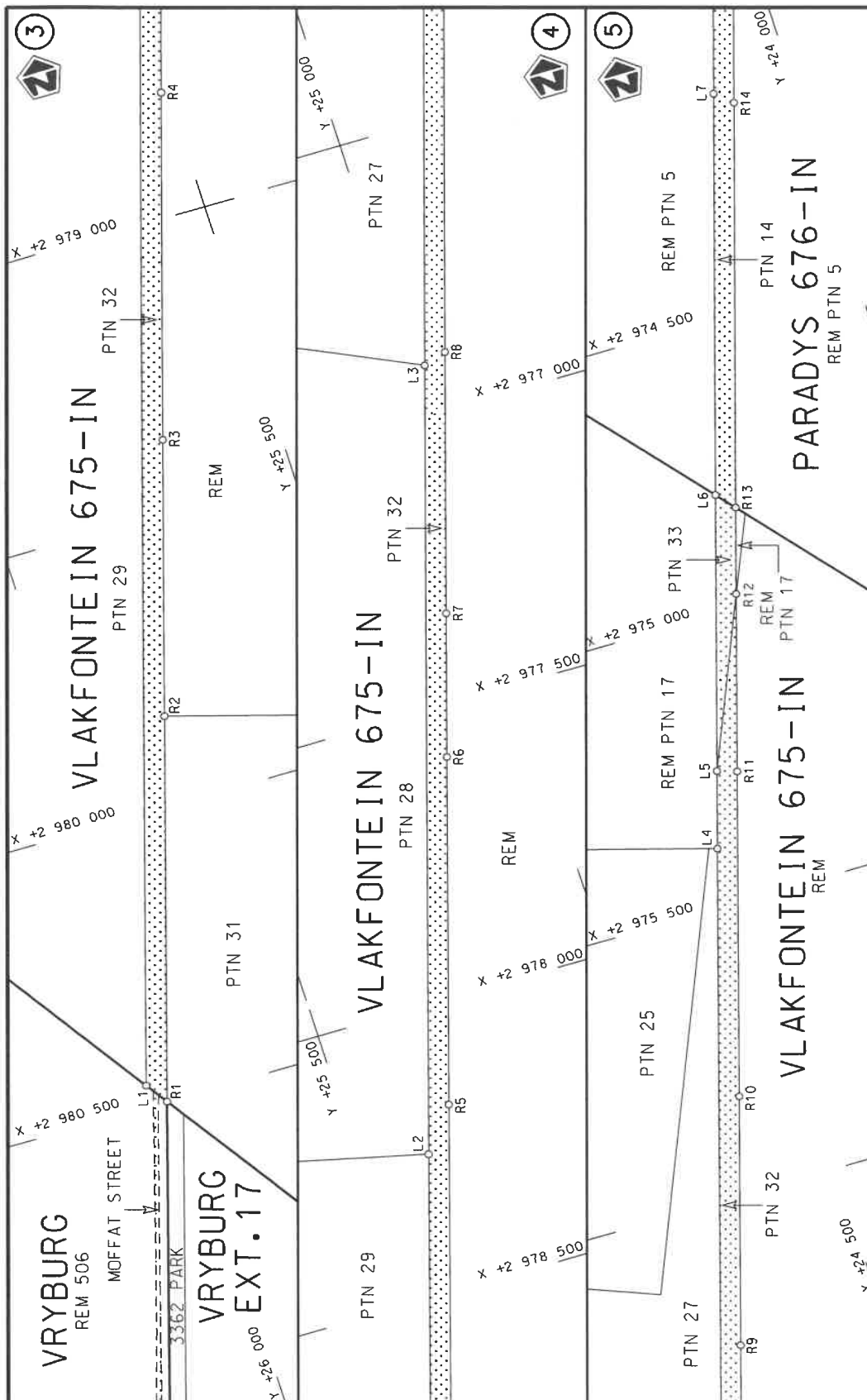
**VERKLARING WYSIGING VAN NASIONALE PAD N18 SEKSIE 4 EN VERKLARING VAN
BESTAANDE PROVINSIALE PAD P71 SEKSIE 8 DEUR DIE DORPSGEBIED VAN VRYBURG DEEL
VAN NASIONALE PAD N18 SEKSIE 4**


- i) Kragtens Artikel 40(1)(a) van die Suid-Afrikaanse Nasionale Padagentskap Beperk en Nasionale Paaie Wet 1998 (Wet No. 7 van 1998), verklaar ek hiermee die gedeelte van die Provinsiale Pad P71 Seksie 8, beginnende vanaf die interseksie met die straat bekend as Marketstraat in Vryburg, tydens datum van verkalring, en daarvaandaan in 'n algemene noordelike rigting langs die straat bekend as Moffatstraat tydens datum van verklaring, as 'n Nasionale Pad.
- ii) Kragtens Artikel 40(1)(b) van die Suid-Afrikaanse Nasionale Padagentskap Beperk en Nasionale Paaie Wet 1998 (Wet No. 7 van 1998), wysig ek hiermee Verklaring No. 907 van 2010 deur dit in sy geheel te vervang, met bygaande velle 1 tot 10 van Plan No. P1216/20.

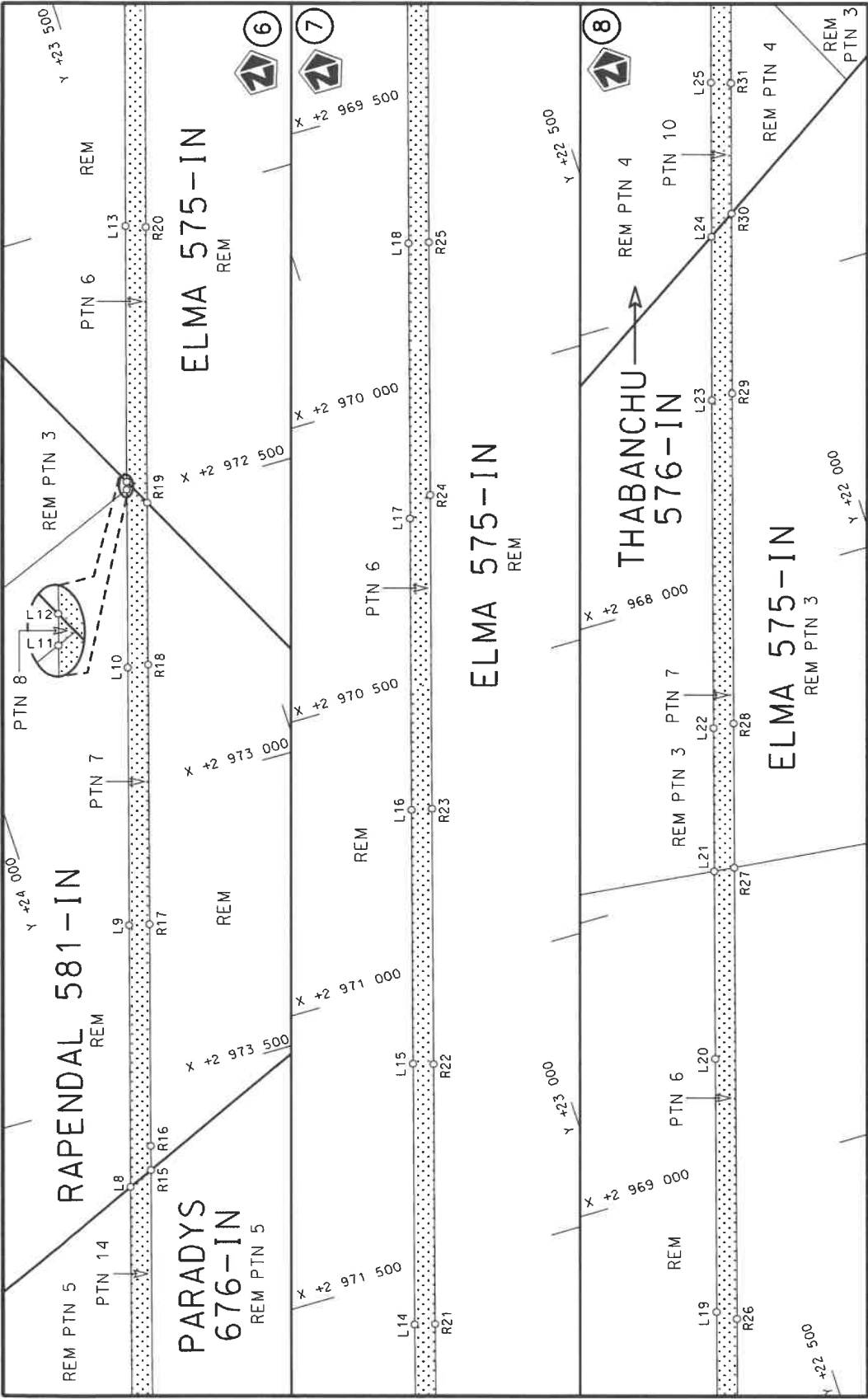
(Nasionale Pad N18 Seksie 4: Vryburg – Stella)
MINISTER VAN VERVOER




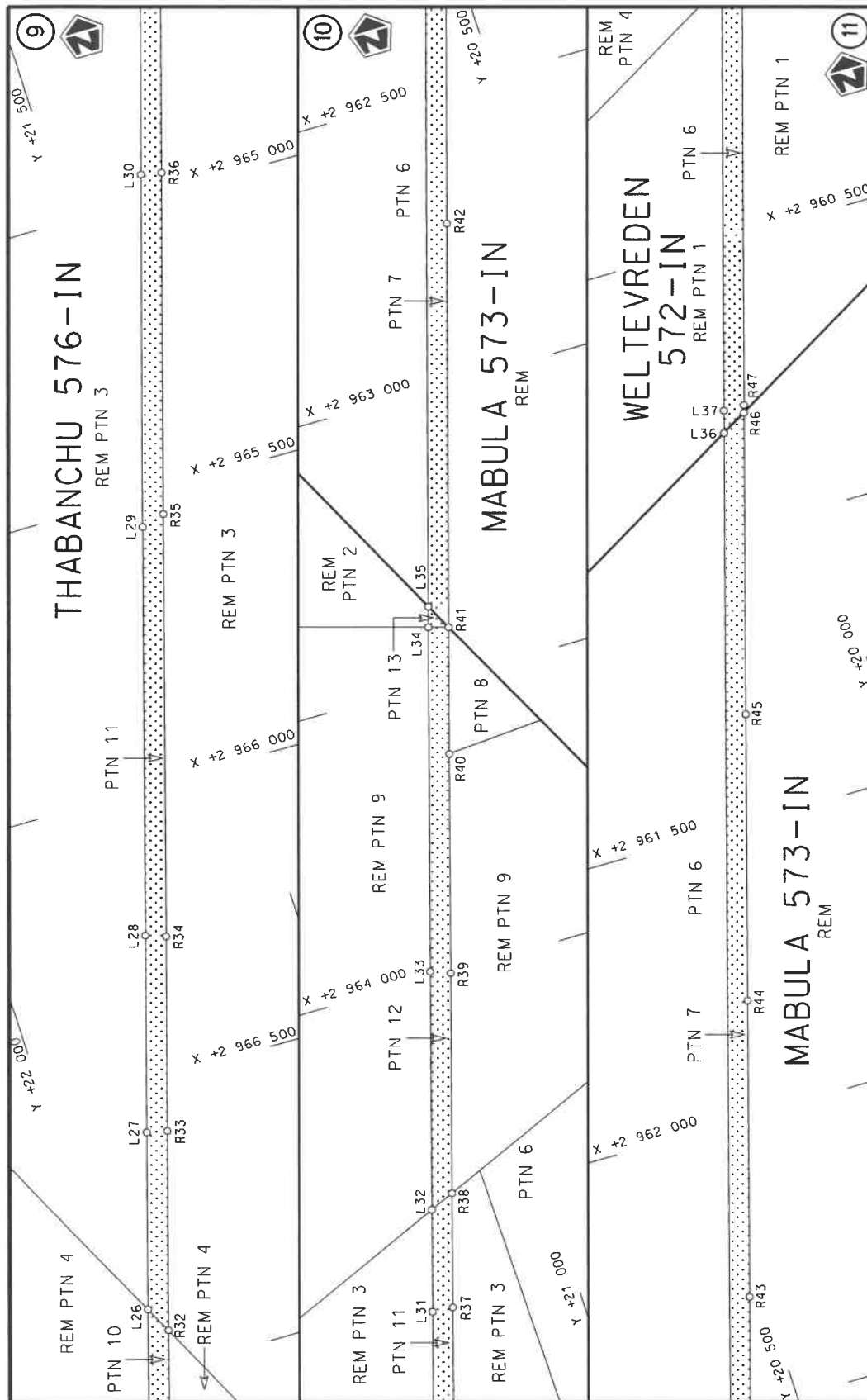
Die Suid Afrikaanse Nasionale Podagentskap MSB Bpk		steldie padreserwe voor van 'n gedeelte represents the road reserve of a portion van Nasionale Roete N18 of National Route	Vel Sheet	1 of	10
The South African National Roads Agency SOC Ltd			4	Plan	P1216/20



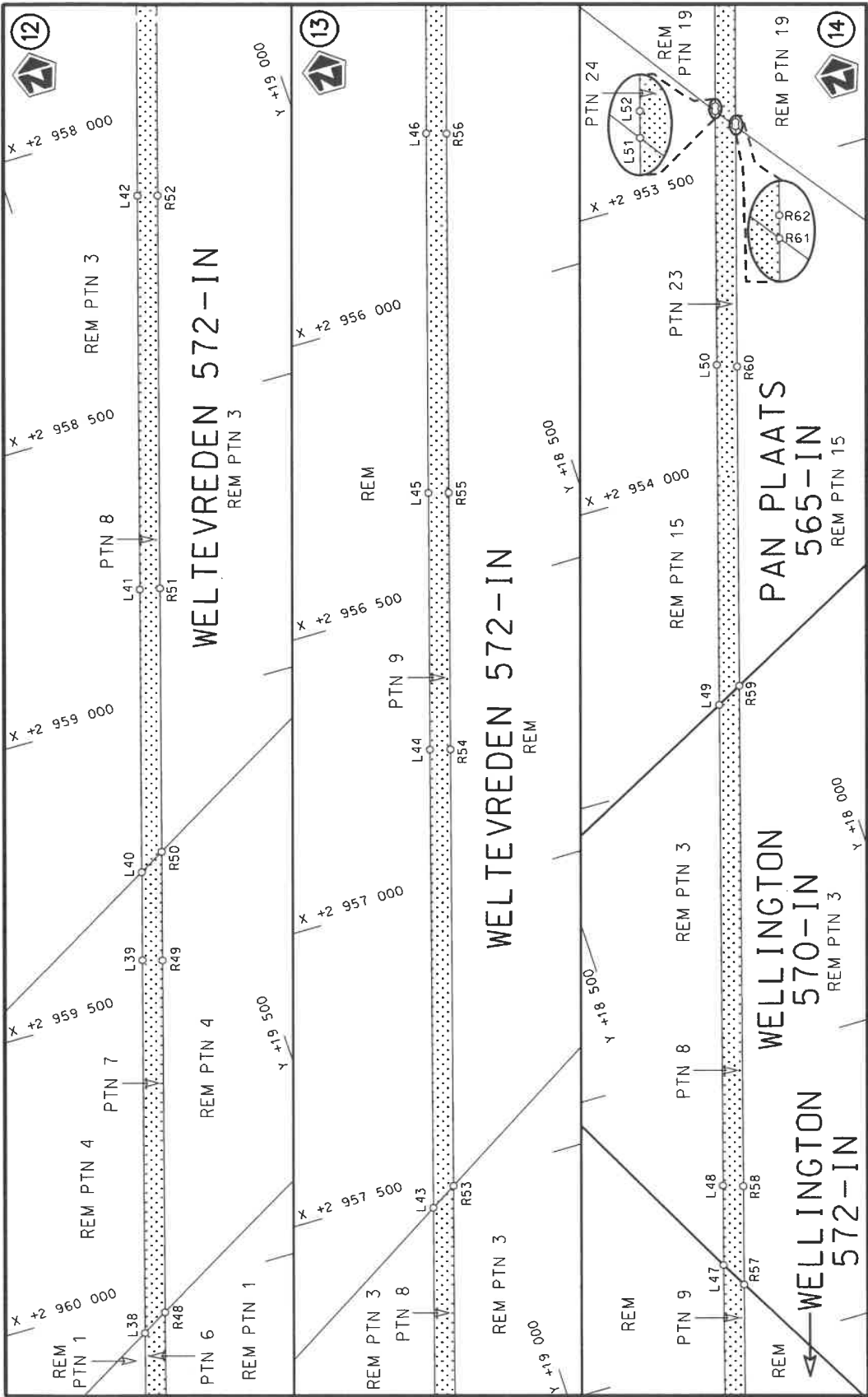
Die Suid Afrikaanse Nasionale Padagentskap MSB Bpk The South African National Roads Agency SOC Ltd	Die figuur getoon The figure shown		steldie padreserwe voor van 'n gedeelte represents the road reserve of a portion van Nasionale Roete N18 of National Route
Vel Sheet 2 of 10	Plan P1216/20	4	Sektie Section

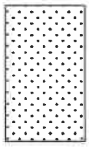


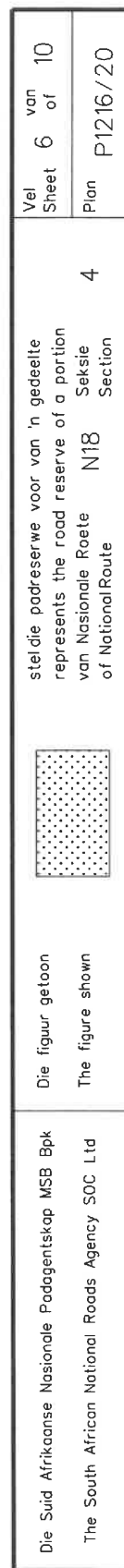
Die Suid Afrikaanse Nasionale Padagentskap MSB Bpk The South African National Roads Agency SOC Ltd	Die figuur getoon The figure shown		stel die padreserwe voor van 'n gedeelte represents the road reserve of a portion van Nasionale Roete N18 of National Route	4	Vel Sheet	3 of	10
					Plan	P1216/20	

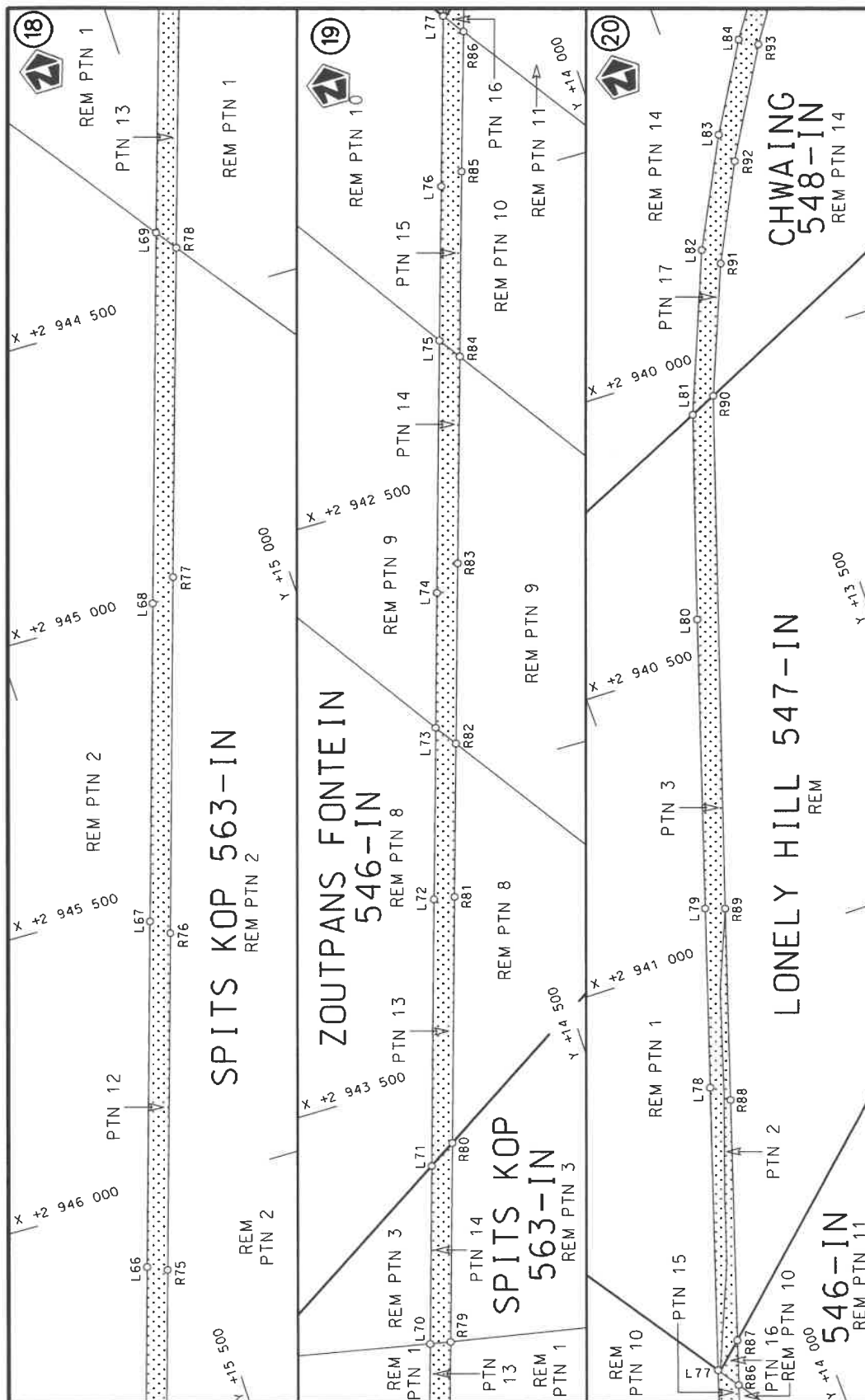


Die Suid Afrikaanse Nasionale Padagentskap MSB Bpk The South African National Roads Agency SOC Ltd	Die figuur getoon The figure shown	stel die padreserwe voor van 'n gedeelte represents the road reserve of a portion van Nasionale Roete N18 of National Route	Vel Sheet 4 of 10
		Seksie N18 Section	Plan P1216/20



Die Suid Afrikaanse Nasionale Padagentskap MSB Bpk The South African National Roads Agency SOC Ltd	Die figuur getoon The figure shown		stelt die padreserwe voor van 'n gedeelte represents the road reserve of a portion van Nasionale Roete N18 of National Route	4	Vel Sheet 5 of 10	Plan P1216/20





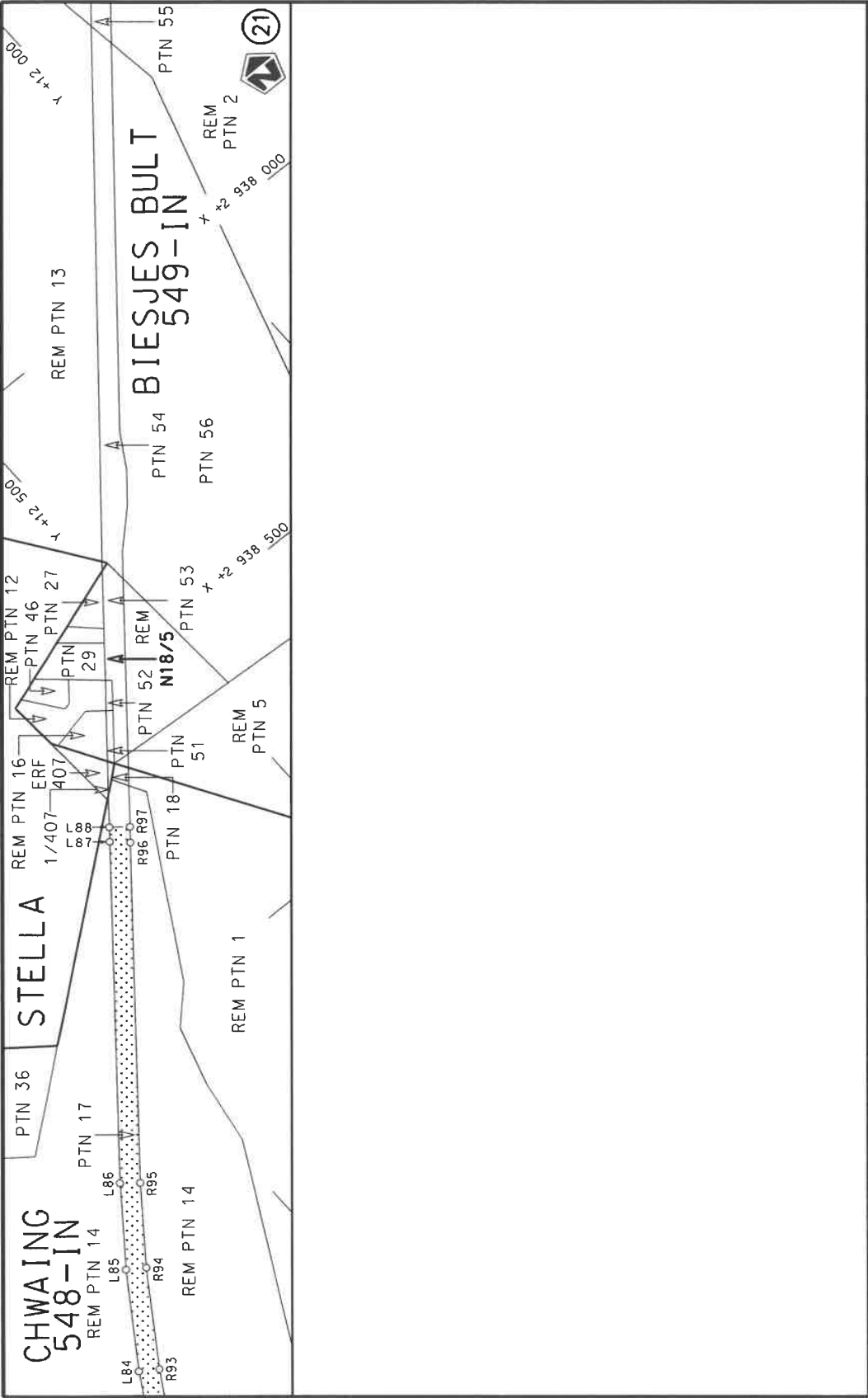
Vel
Sheet 7 of 10
Plan P1216/20


steeldie padreserwe voor van 'n gedeelte
represents the road reserve of a portion
van Nasionale Roete N18 Seksie
of National Route Section



Die figuur getoon
The figure shown

Die Suid Afrikaanse Nasionale Padagentskap MSB Bpk
The South African National Roads Agency SOC Ltd



Die Suid Afrikaanse Nasionale Padagentskap MSB Bpk The South African National Roads Agency SOC Ltd	Die figuur getoon The figure shown		steeldie padreserwe voor van 'n gedeelte represents the road reserve of a portion van Nasionale Roete N18 of National Route of National Route	4	Vel Sheet 8 of 10
				Plan P1216/20	

PADRESERWE KOÖRDINATE / ROAD RESERVE CO-ORDINATES									
LINKERKANT/LEFT HAND SIDE					REGTERKANT/RIGHT HAND SIDE				
	Y		X	WG 25°		Y		X	
L1	26 052.95	2	980 462.68		R1	26 028.58	2	980 499.63	
L2	25 385.06	2	978 254.64		R2	25 830.34	2	979 844.24	
L3	24 979.17	2	976 913.75		R3	25 688.35	2	979 374.76	
L4	24 520.46	2	975 398.43		R4	25 510.01	2	978 785.93	
L5	24 480.53	2	975 266.52		R5	25 326.86	2	978 180.05	
L6	24 338.58	2	974 797.63		R6	25 147.95	2	977 588.82	
L7	24 132.65	2	974 116.70		R7	25 074.06	2	977 345.00	
L8	23 994.82	2	973 661.48		R8	24 939.72	2	976 901.10	
L9	23 859.55	2	973 214.94		R9	24 743.75	2	976 253.41	
L10	23 726.59	2	972 775.53		R10	24 615.54	2	975 829.80	
L11	23 635.14	2	972 472.52		R11	24 448.22	2	975 277.16	
L12	23 631.06	2	972 459.05		R12	24 357.09	2	974 975.42	
L13	23 499.21	2	972 023.54		R13	24 312.80	2	974 828.77	
L14	23 366.65	2	971 585.18		R14	24 104.72	2	974 141.84	
L15	23 231.99	2	971 139.98		R15	23 953.77	2	973 642.76	
L16	23 100.89	2	970 707.12		R16	23 941.32	2	973 601.58	
L17	22 950.48	2	970 210.55		R17	23 826.81	2	973 223.22	
L18	22 808.60	2	969 742.08		R18	23 692.71	2	972 780.48	
L19	22 653.43	2	969 228.59		R19	23 609.31	2	972 504.61	
L20	22 522.44	2	968 796.34		R20	23 467.35	2	972 035.29	
L21	22 425.75	2	968 476.40		R21	23 334.06	2	971 594.56	
L22	22 351.94	2	968 232.13		R22	23 199.67	2	971 150.78	
L23	22 183.02	2	967 673.66		R23	23 067.96	2	970 714.93	
L24	22 098.53	2	967 395.30		R24	22 906.21	2	970 180.47	
L25	22 018.95	2	967 133.12		R25	22 776.11	2	969 750.21	
L26	21 944.52	2	966 886.95		R26	22 624.65	2	969 250.32	
L27	21 853.31	2	966 585.29		R27	22 391.89	2	968 480.07	
L28	21 751.87	2	966 249.73		R28	22 317.56	2	968 234.09	
L29	21 541.65	2	965 554.85		R29	22 147.12	2	967 671.75	
L30	21 360.31	2	964 956.28		R30	22 054.61	2	967 365.95	
L31	21 243.01	2	964 569.28		R31	21 987.50	2	967 144.11	
L32	21 190.54	2	964 395.39		R32	21 923.34	2	966 932.43	
L33	21 068.10	2	963 989.59		R33	21 820.36	2	966 592.67	
L34	20 890.69	2	963 403.48		R34	21 719.96	2	966 261.31	
L35	20 879.83	2	963 368.53		R35	21 502.55	2	965 542.72	
L36	20 110.47	2	960 826.26		R36	21 327.09	2	964 962.83	
L37	20 099.01	2	960 788.29		R37	21 208.83	2	964 571.70	
L38	19 879.56	2	960 062.51		R38	21 149.97	2	964 377.16	
L39	19 686.63	2	959 425.70		R39	21 036.51	2	964 002.17	
L40	19 641.14	2	959 275.33		R40	20 923.88	2	963 628.99	
L41	19 495.34	2	958 793.36		R41	20 858.51	2	963 413.23	
L42	19 292.26	2	958 122.56		R42	20 650.73	2	962 727.57	
L43	19 114.86	2	957 535.84		R43	20 523.36	2	962 306.50	
L44	18 878.21	2	956 753.21		R44	20 370.58	2	961 801.63	
L45	18 745.69	2	956 315.50		R45	20 223.02	2	961 314.25	
L46	18 560.31	2	955 703.23		R46	20 068.08	2	960 801.42	
L47	18 452.57	2	955 347.16		R47	20 064.23	2	960 788.67	
L48	18 411.41	2	955 211.14		R48	19 836.71	2	960 037.22	
L49	18 163.21	2	954 390.56		R49	19 654.94	2	959 435.84	
L50	17 987.59	2	953 810.97		R50	19 598.73	2	959 250.37	
L51	17 856.80	2	953 379.14		R51	19 462.54	2	958 801.04	
					Vel 9 Van 10 Sheet of P1216/20				

PADRESERWE KOÖRDINATE / ROAD RESERVE CO-ORDINATES									
LINKERKANT/LEFT HAND SIDE					REGTERKANT/RIGHT HAND SIDE				
	Y		X	WG 25º		Y		X	
L52	17 854.56	2 953	371.74		R52	19 259.93	2 958	131.81	
L53	17 699.34	2 952	857.71		R53	19 071.08	2 957	508.20	
L54	17 528.28	2 952	292.47		R54	18 845.68	2 956	763.07	
L55	17 384.24	2 951	816.39		R55	18 713.17	2 956	325.07	
L56	17 263.28	2 951	416.93		R56	18 528.03	2 955	713.65	
L57	17 011.00	2 950	590.46		R57	18 430.15	2 955	390.42	
L58	16 866.59	2 950	135.67		R58	18 379.22	2 955	222.23	
L59	16 726.89	2 949	696.45		R59	18 120.92	2 954	367.90	
L60	16 486.79	2 948	941.09		R60	17 956.09	2 953	823.93	
L61	16 300.07	2 948	353.83		R61	17 832.28	2 953	414.88	
L62	16 286.78	2 948	312.03		R62	17 829.99	2 953	407.33	
L63	16 097.91	2 947	717.36		R63	17 657.15	2 952	836.04	
L64	15 882.31	2 947	039.05		R64	17 484.54	2 952	264.87	
L65	15 736.56	2 946	580.70		R65	17 351.58	2 951	825.78	
L66	15 591.41	2 946	123.68		R66	17 237.98	2 951	450.93	
L67	15 404.96	2 945	537.12		R67	16 980.60	2 950	607.31	
L68	15 233.47	2 944	998.03		R68	16 841.14	2 950	168.90	
L69	15 034.19	2 944	370.54		R69	16 694.91	2 949	708.11	
L70	14 900.06	2 943	949.64		R70	16 453.50	2 948	948.43	
L71	14 804.08	2 943	647.45		R71	16 249.71	2 948	307.23	
L72	14 660.33	2 943	194.83		R72	16 060.89	2 947	713.46	
L73	14 567.75	2 942	903.75		R73	15 858.72	2 947	076.68	
L74	14 495.10	2 942	675.34		R74	15 692.73	2 946	554.70	
L75	14 359.14	2 942	248.10		R75	15 560.50	2 946	138.63	
L76	14 276.17	2 941	987.37		R76	15 378.62	2 945	567.14	
L77	14 184.77	2 941	699.09		R77	15 187.09	2 944	963.36	
L78	14 032.10	2 941	219.51		R78	15 009.63	2 944	405.98	
L79	13 935.42	2 940	915.17		R79	14 866.70	2 943	956.19	
L80	13 779.68	2 940	425.04		R80	14 759.36	2 943	618.47	
L81	13 667.89	2 940	078.68		R81	14 626.53	2 943	200.56	
L82	13 558.60	2 939	807.06		R82	14 543.87	2 942	940.81	
L83	13 465.03	2 939	622.64		R83	14 446.67	2 942	635.33	
L84	13 378.57	2 939	474.15		R84	14 335.57	2 942	285.17	
L85	13 276.96	2 939	322.21		R85	14 236.19	2 941	971.96	
L86	13 184.53	2 939	198.75		R86	14 160.76	2 941	735.54	
L87	12 803.31	2 938	725.11		R87	14 136.58	2 941	659.43	
L88	12 787.10	2 938	705.03		R88	14 006.87	2 941	251.12	
					R89	13 903.68	2 940	926.37	
					R90	13 624.72	2 940	058.03	
					R91	13 536.15	2 939	839.81	
					R92	13 454.97	2 939	675.92	
					R93	13 349.84	2 939	492.95	
					R94	13 249.21	2 939	341.30	
					R95	13 158.75	2 939	219.98	
					R96	12 778.10	2 938	748.22	
					R97	12 760.54	2 938	726.48	