
GOVERNMENT NOTICES • GOEWERMENTSKENNISGEWINGS

DEPARTMENT OF TRANSPORT

NO. 5677

13 December 2024

**THE SOUTH AFRICAN NATIONAL ROADS
AGENCY SOC LIMITED**Registration No: 1998/009584/30

DECLARATION AMENDMENT OF NATIONAL ROAD R31 SECTION 8

AMENDMENT OF DECLARATION No. 2670 OF 2022.

By virtue of section 40(1)(b) of the South African National Roads Agency Limited and the National Roads Act 1998 (Act No. 7 of 1998), I hereby amend Declaration No. 2670 of 2022 by substituting paragraph E of the Schedule, being the descriptive declaration of the route from Barkly West up to the intersection with N8, with the accompanying sheets 1 to 14 of Plan No. P1244/24.

In the town of Barkly West, the R31 Section 8 follows the street known as Transvaal Road, at time of declaration. In the town of Kimberley, the R31 Section 8 enters the town from the north and follows the street known as Landbou Street, at time of declaration.

(National Road R31 Section 8: Barkly West – N8 Intersection)

MINISTER OF TRANSPORT

DEPARTEMENT VAN VERVOER

NO. 5677

13 Desember 2024

**DIE SUID-AFRIKAANSE NASIONALE
PADAGENTSKAP MSB BEPERK**

Registrasie No: 1998/009584/30

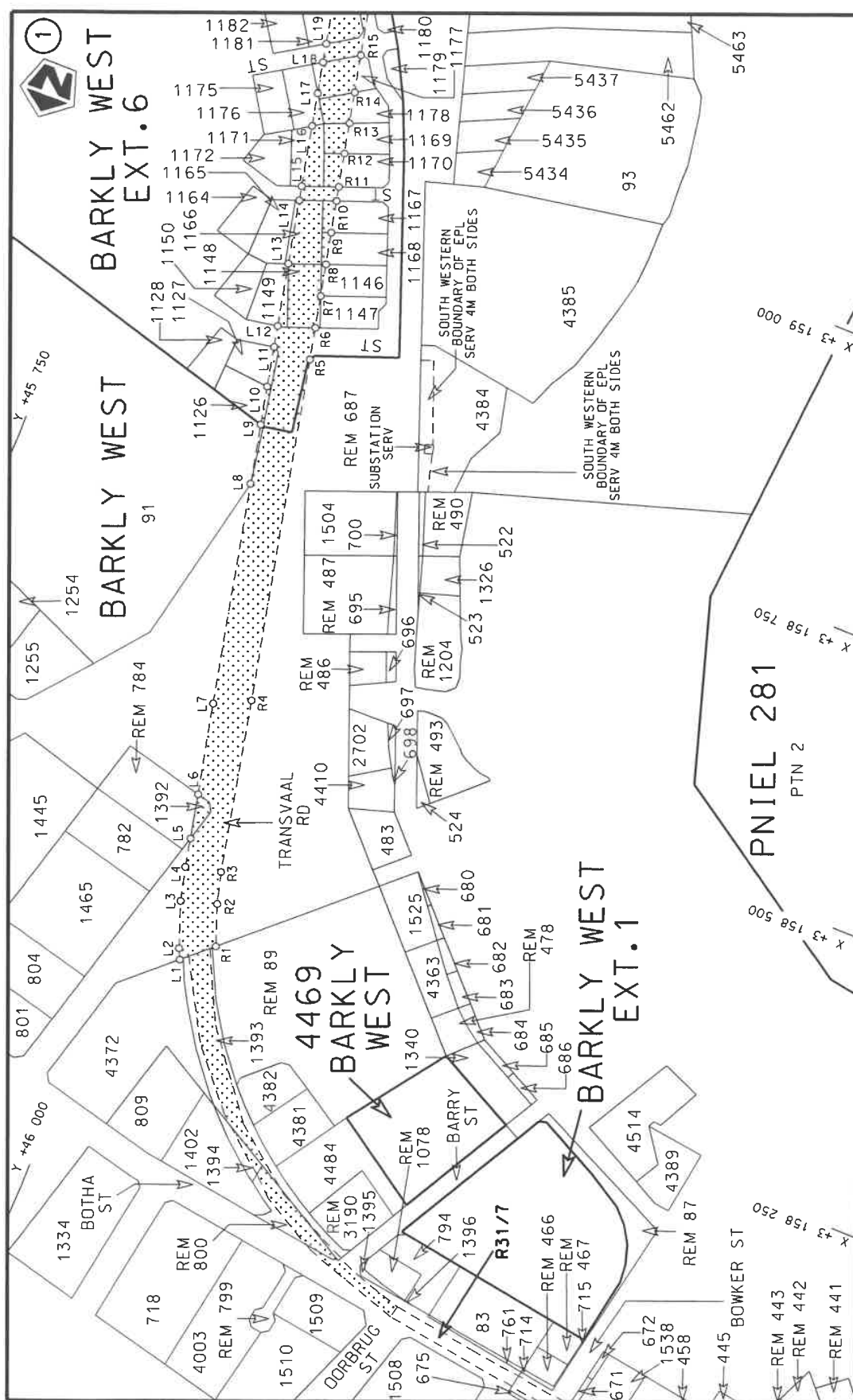
VERKLARING WYSIGING VAN NASIONALE PAD R31 SEKSIE 8


WYSIGING VAN VERKLARING No. 2670 VAN 2022.

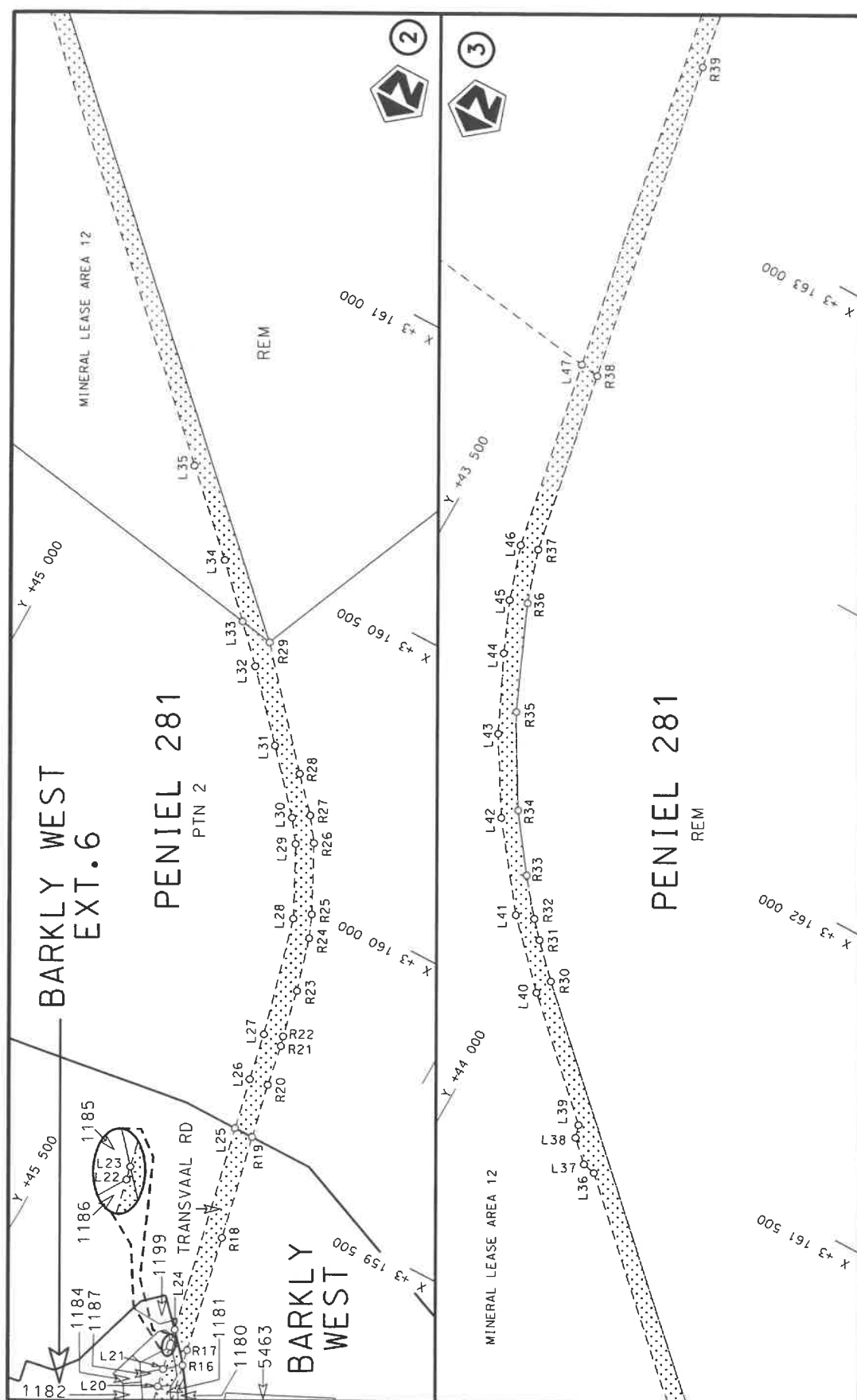
Kragtens Artikel 40(1)(b) van die Suid-Afrikaanse Nasionale Padagentskap Beperk en Nasionale Paaie Wet 1998 (Wet No. 7 van 1998), wysig ek hiermee Verklaring No. 2670 van 2022 deur paragraaf E van die Skedule te vervang, synde die gedeelte van die beskrywende verklaring van die pad vanaf Barkly Wes tot by die interseksie met N8, met bygaande velle 1 tot 14 van Plan No. P1244/24.


In die dorp van Barkly Wes volg die R31 Seksie 8 die straat bekend as Transvaal Pad, tydens datum van verklaring. In die dorp van Kimberley kom die R31 Seksie 8 die dorp binne vanuit die noorde en volg die straat bekend as Landboustraat, tydens datum van verklaring.

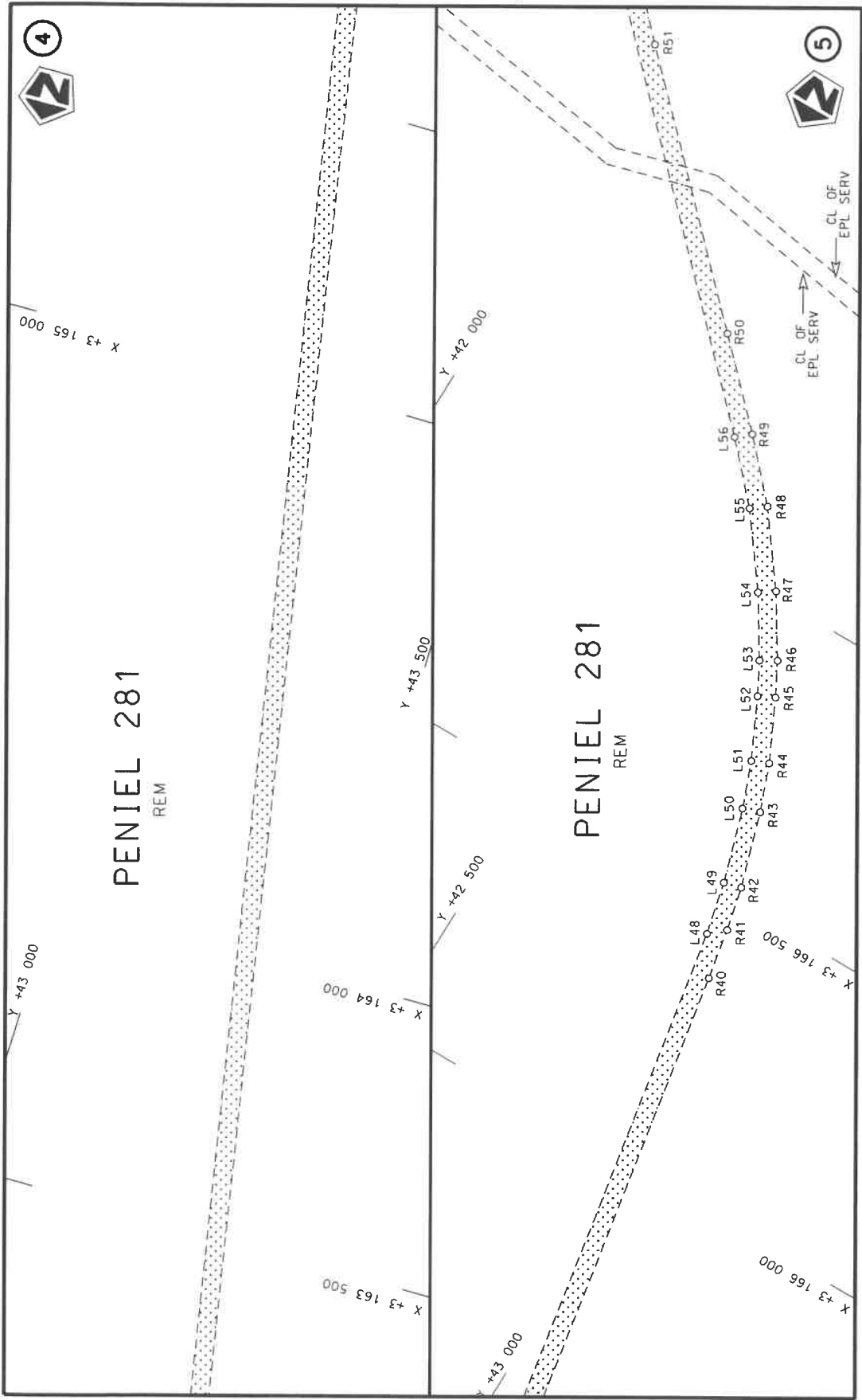
(Nasionale Pad R31 Seksie 8: Barkly Wes – N8 Interseksie)**MINISTER VAN VERVOER**



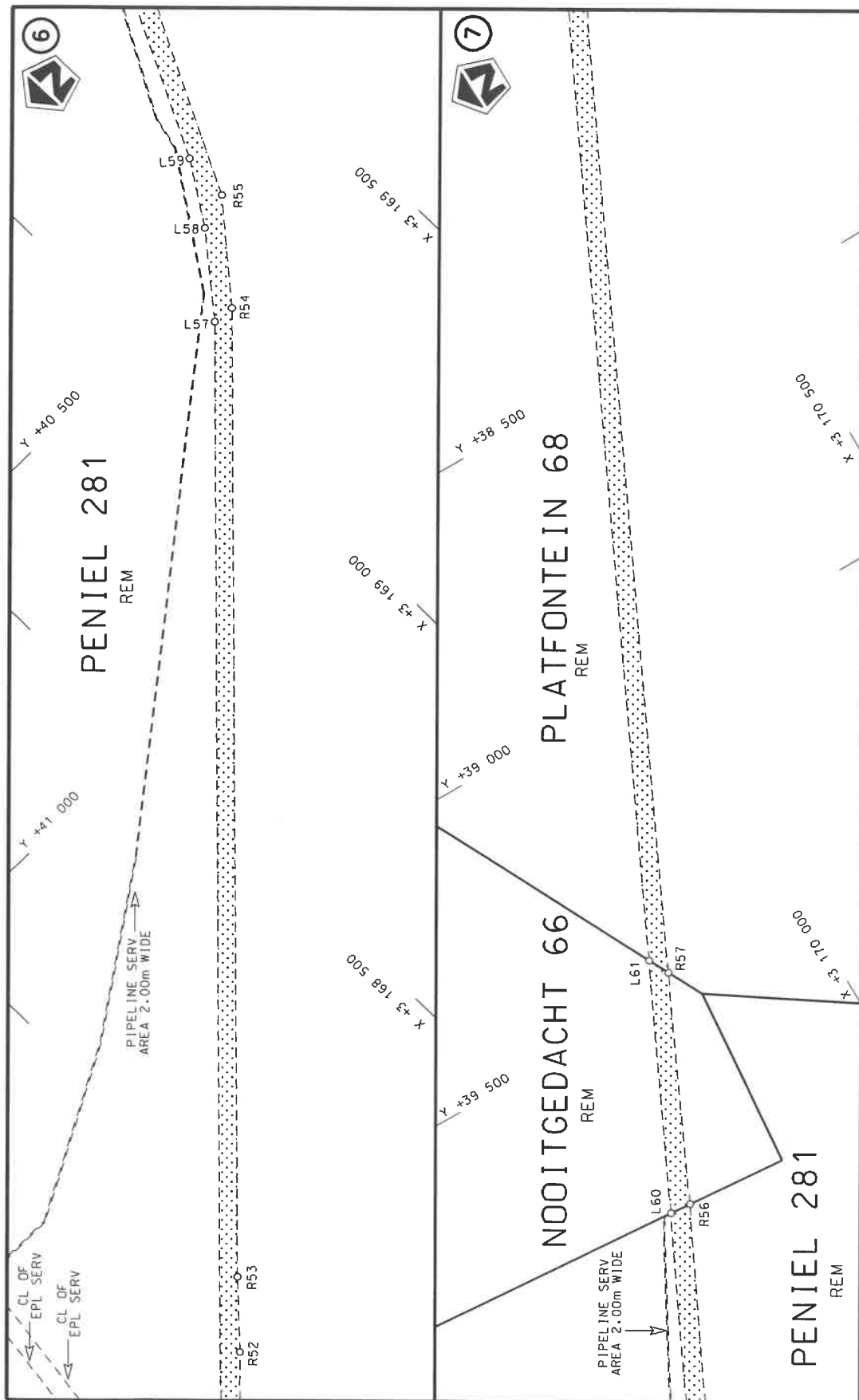
Die Suid Afrikaanse Nasionale Padagentskap MSB Bpk	Die figuur getoon		steldie padreserwe voor van 'n gedeelte represents the road reserve of a portion	Vel Sheet	1 of	14
The South African National Roads Agency SOC Ltd	The figure shown		van Nasionale Roete of National Route	8	Plan	P1244/24

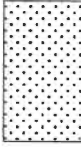


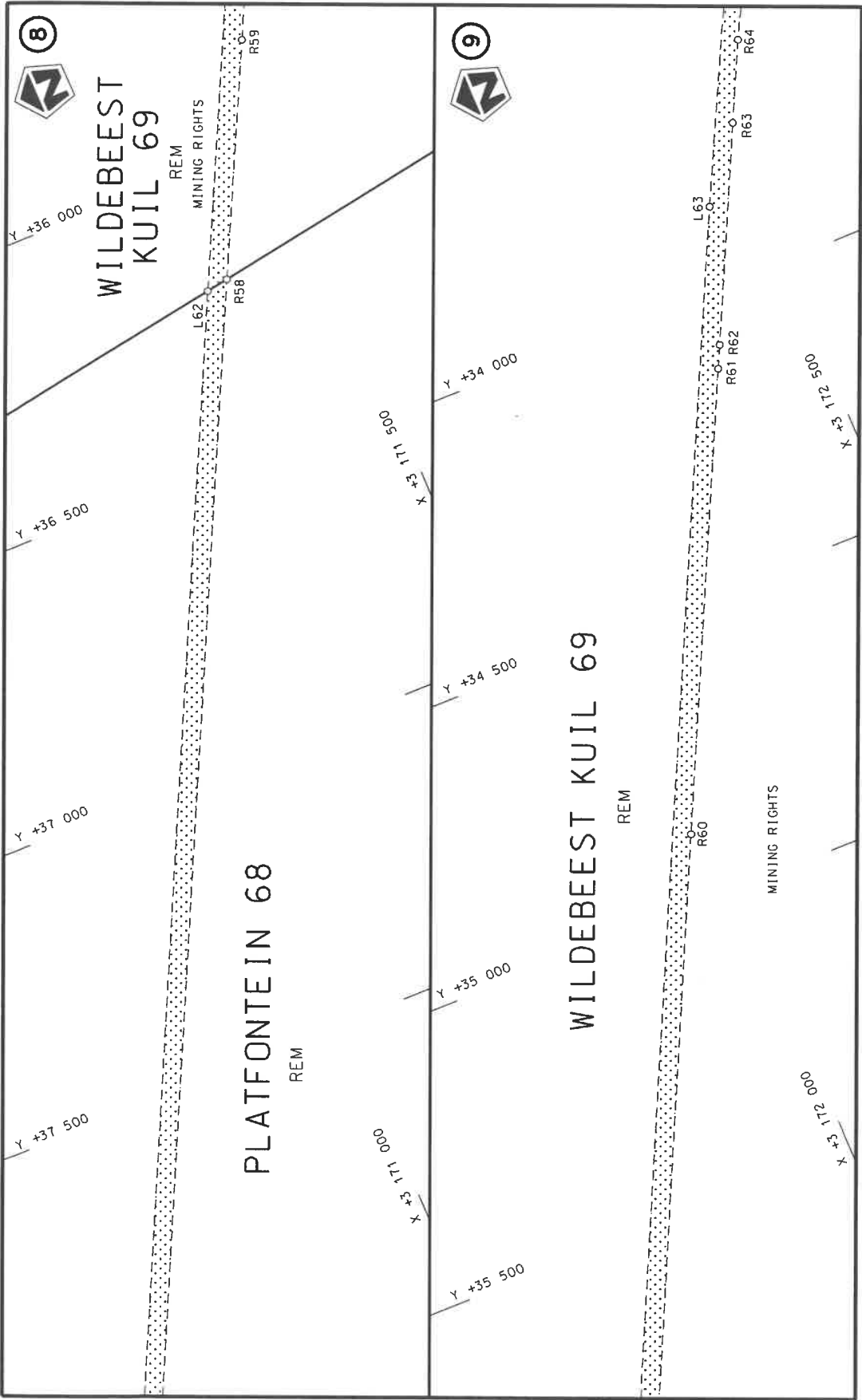
Die Suid Afrikaanse Nasionale Padagentskap MSB Bpk	Die figuur getoon		steldie padreserwe voor van 'n gedeelte represents the road reserve of a portion	Vel Sheet	van of	14
The South African National Roads Agency SOC Ltd	The figure shown		van Nasionale Roete R31 of NationalRoute	8	Plan	P1244/24



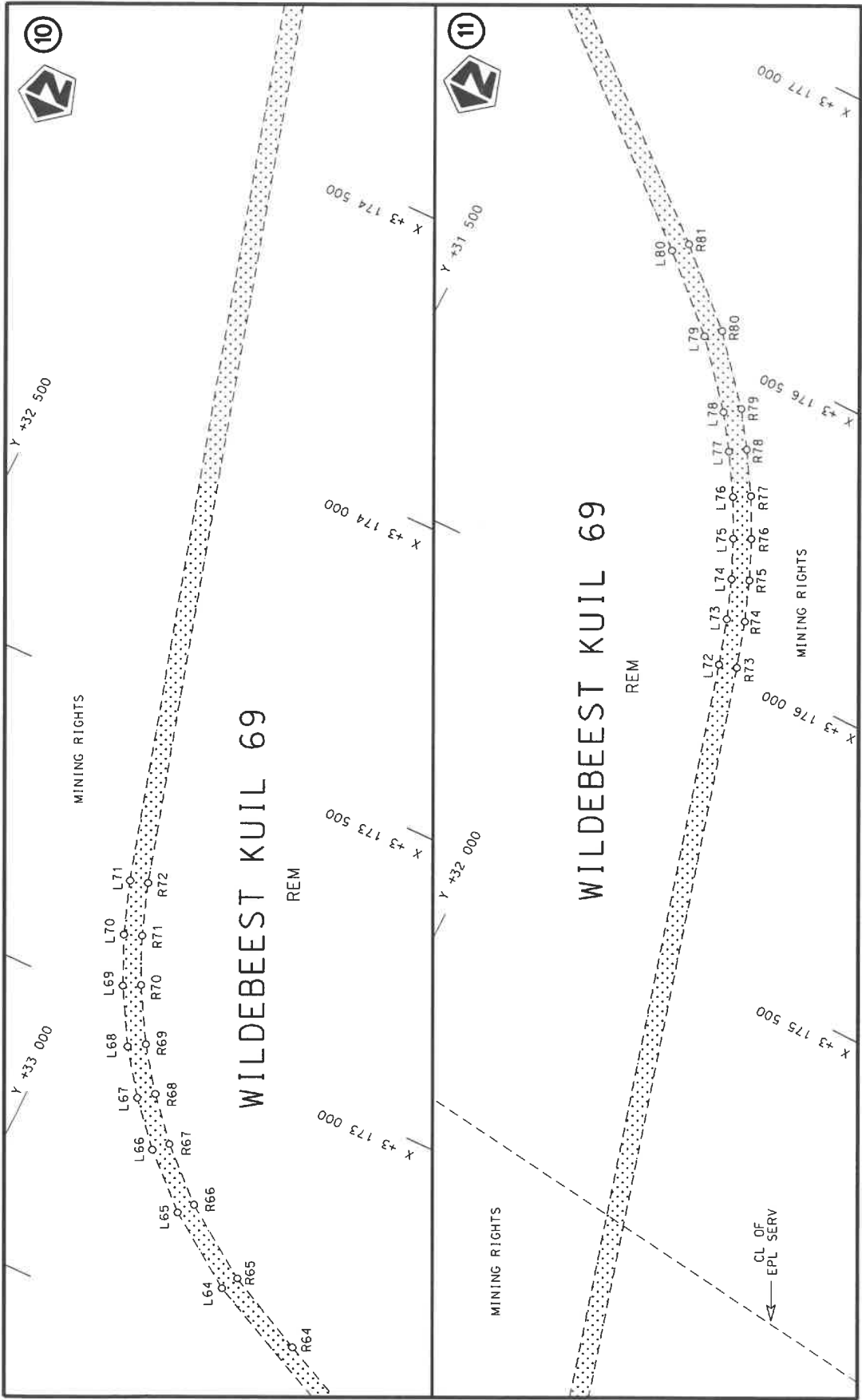
Die Suid Afrikaanse Nasionale Padagentskap MSB Bpk The South African National Roads Agency SOC Ltd	Die figuur getoon The figure shown		stel die padreserwe voor van 'n gedeelte represents the road reserve of a portion van Nasionale Roete R31 of National Route Section	Vel Sheet	3	van of	14
				Plan	P1244/24		



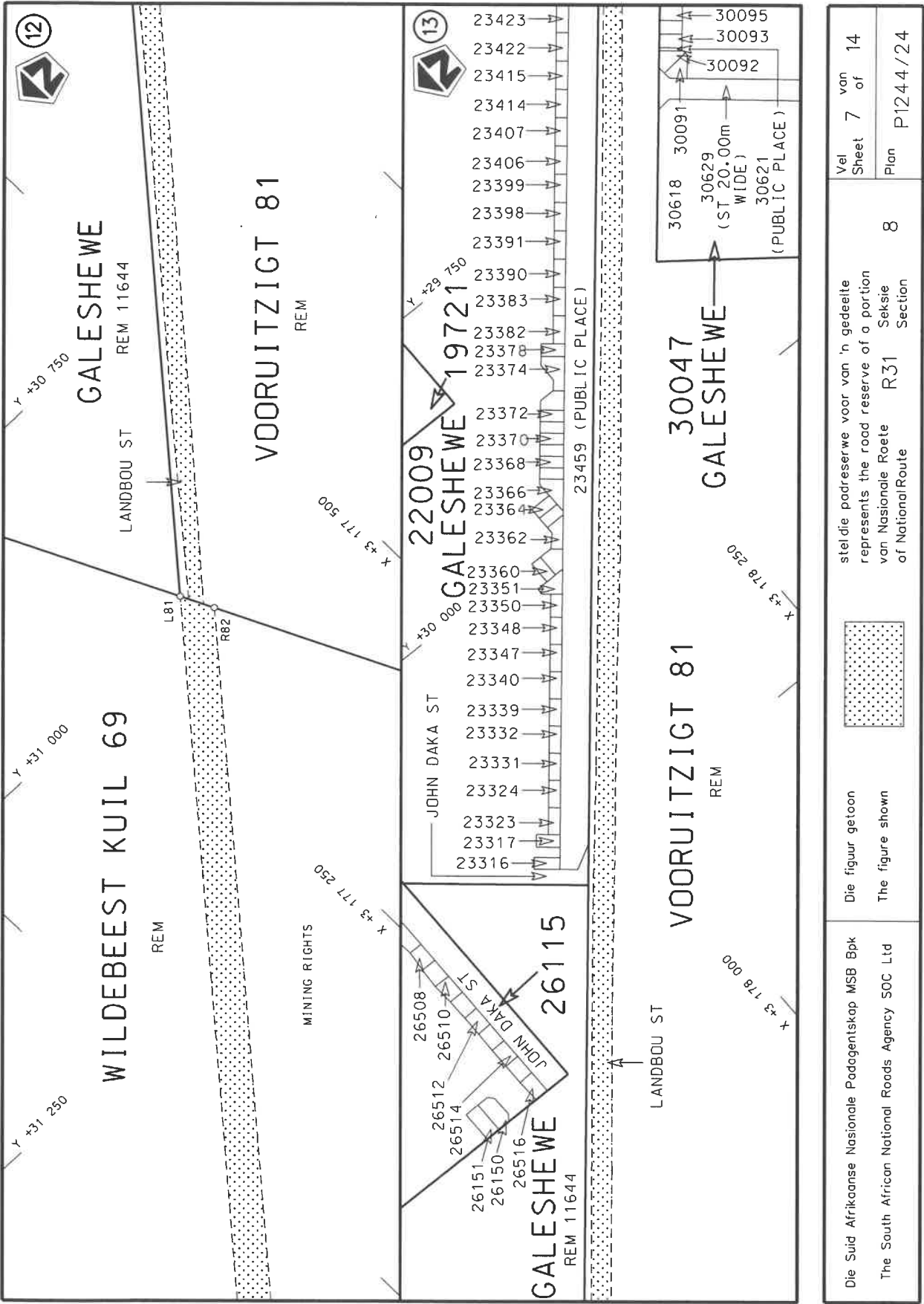
Die Suid Afrikaanse Nasionale Padagentskop MSB Bpk The South African National Roads Agency SOC Ltd	Die figuur getoon The figure shown	 steeldie padreserwe voor van 'n gedeelte represents the road reserve of a portion van Nasionale Roete R31 of National Route Section 8	Vel Sheet 4 of 14 Plan P1244/24
---	---------------------------------------	---	---------------------------------------

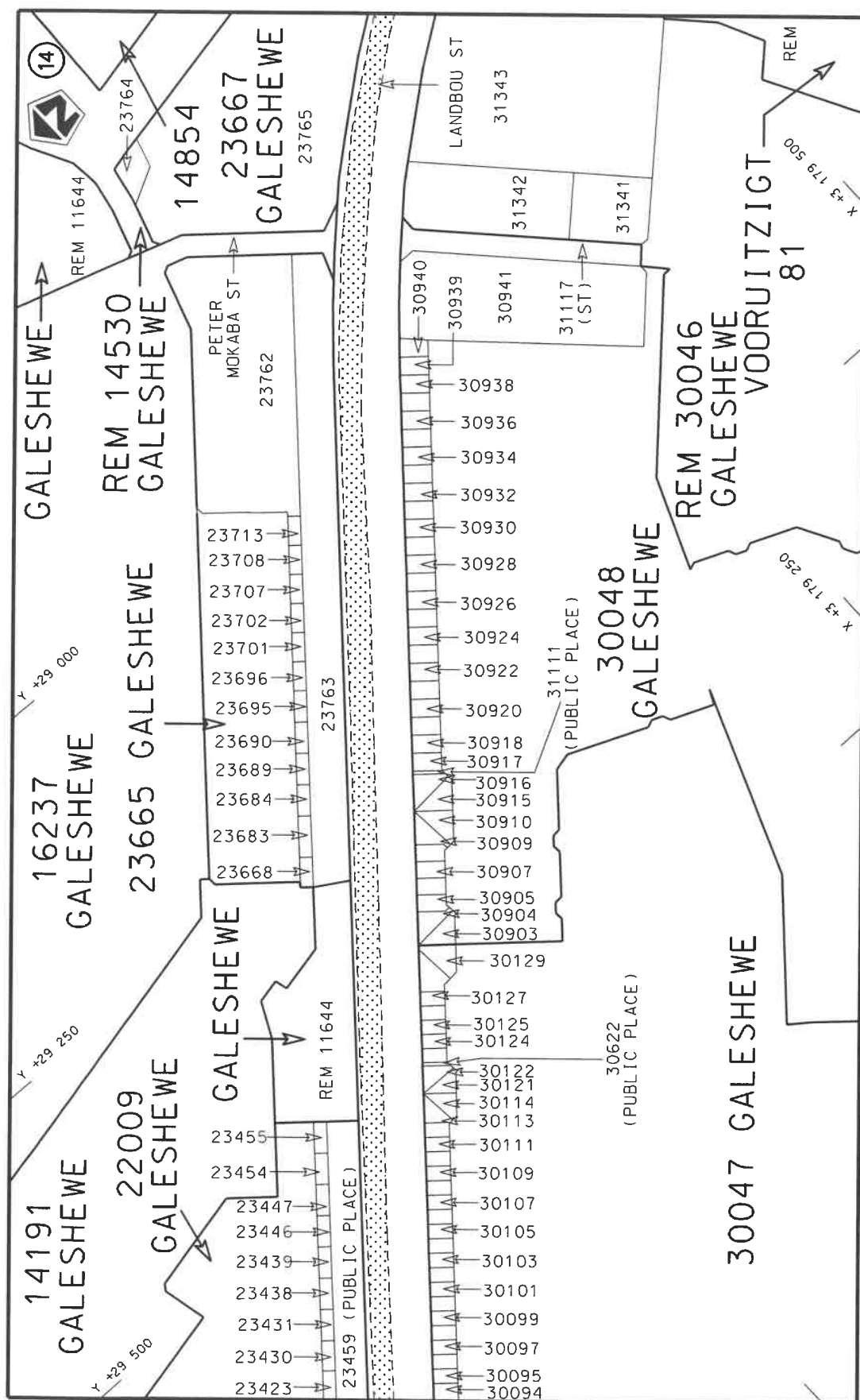



Die Suid Afrikaanse Nasionale Padagentskap MSB Bpk The South African National Roads Agency SOC Ltd	Die figuur getoon The figure shown	stel die padreserwe voor van 'n gedeelte represents the road reserve of a portion van Nasionale Roete R31 of National Route	8	Vel Sheet 5 of 14	Plan P1244/24
---	---------------------------------------	--	---	-------------------------------	------------------

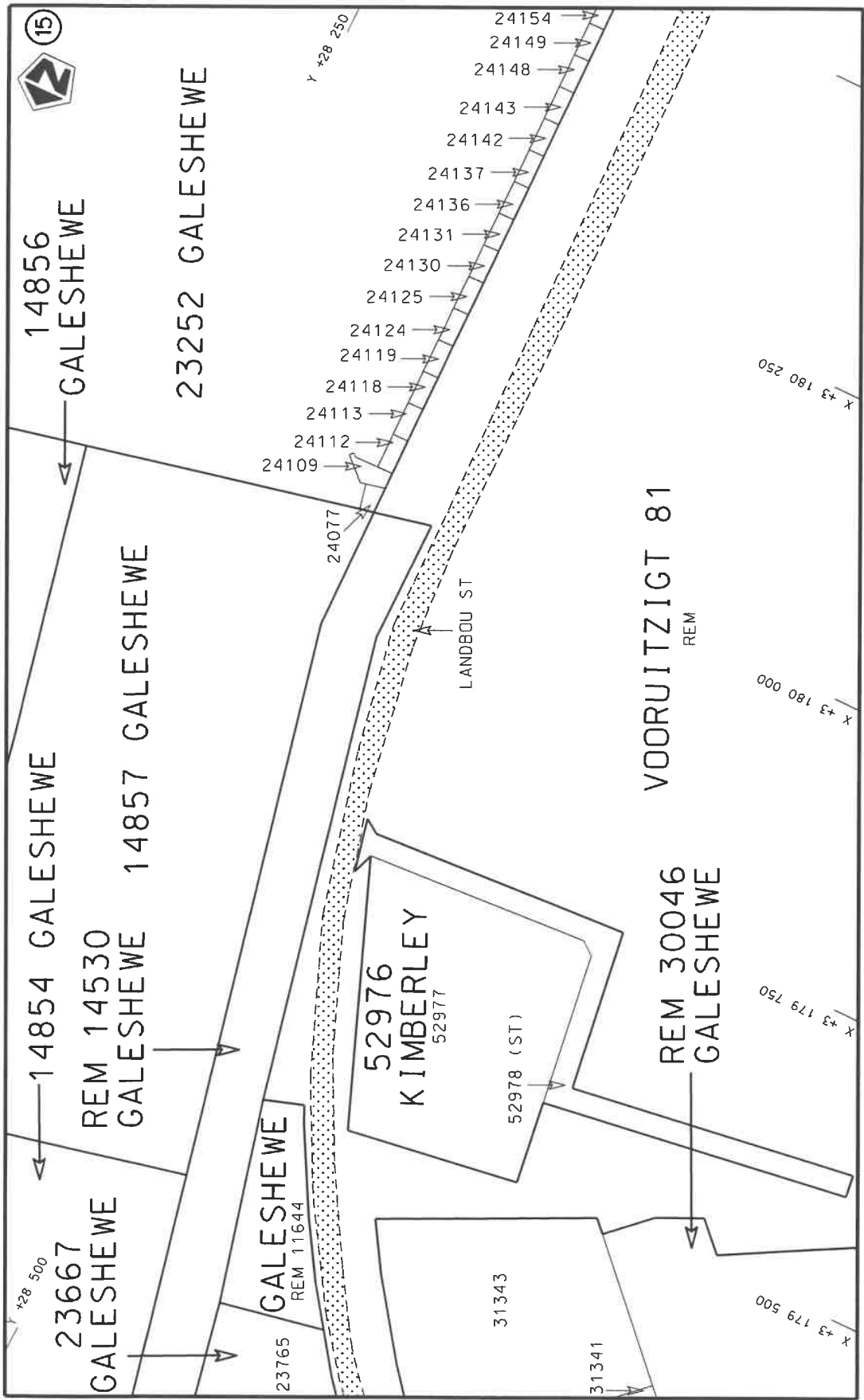


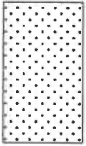
Die Suid Afrikaanse Nasionale Padogentskop MSB Bpk The South African National Roads Agency SOC Ltd		Die figuur getoon The figure shown		stel die padreserwe voor van 'n gedeelte represents the road reserve of a portion van Nasionale Roete of National Route		8	
				R31		Seksie Section	
				Plan		P1244/24	
				Sheet		6 of 14	
				Vel		van	

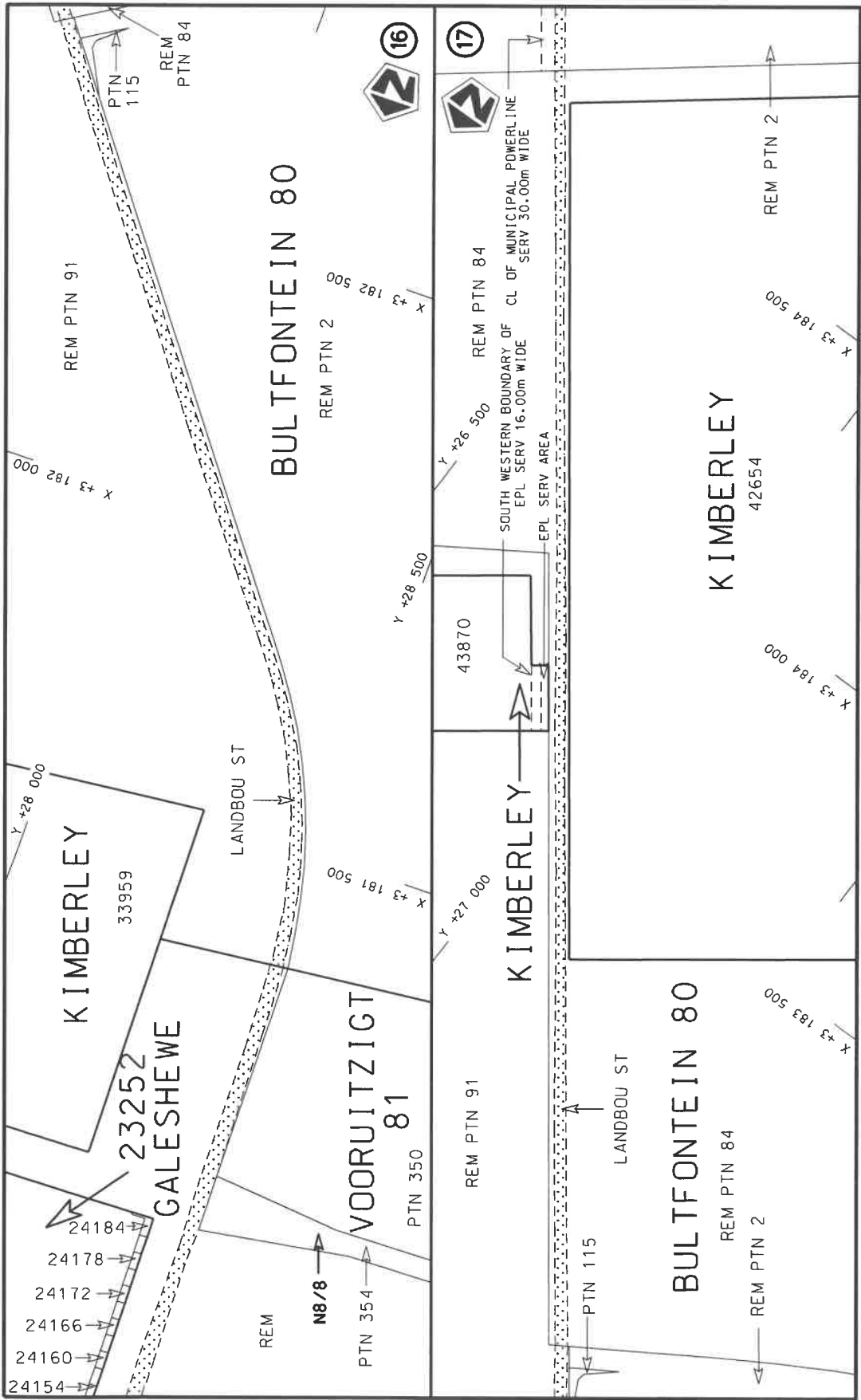


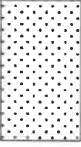


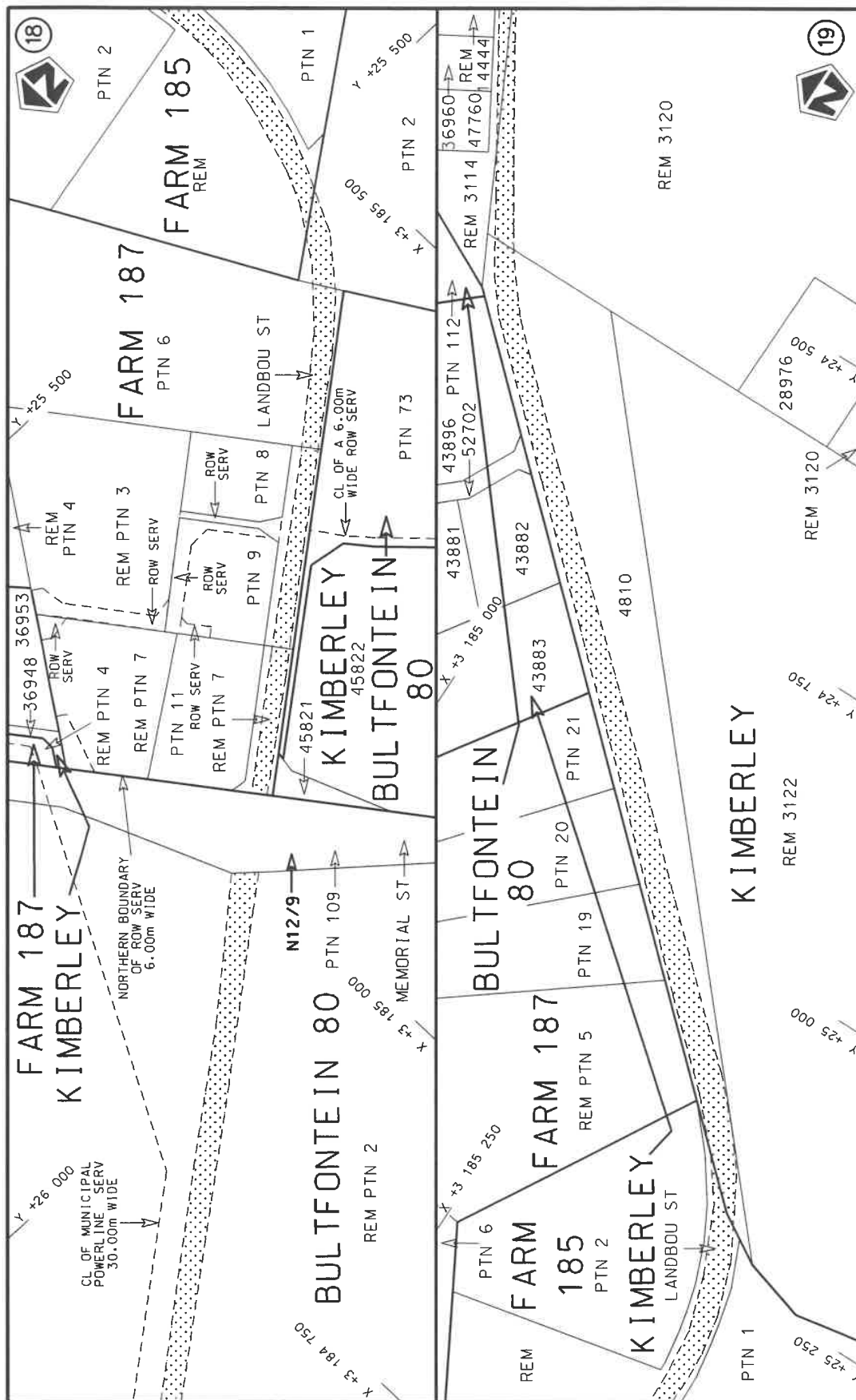
Die Suid Afrikaanse Nasionale Padagentskap MSB Bpk	Die figuur getoon		steldie padreserwe voor van 'n gedeelte represents the road reserve of a portion van Nasionale Roete R31 of National Route	Vel Sheet 8 of 14
The South African National Roads Agency SOC Ltd	The figure shown		8	Plan P1244/24




Die Suid Afrikaanse Nasionale Padagentskap MSB Bpk The South African National Roads Agency SOC Ltd		Die figuur getoon The figure shown				stel die padreserwe voor van 'n gedeelte represents the road reserve of a portion van Nasionale Roete R31 of National Route		Vel Sheet		9 of		14	
						8		Plan		P1244/24			



Die Suid Afrikaanse Nasionale Padagentskap MSB Bpk The South African National Roads Agency SOC Ltd	Die figuur getoon The figure shown		stel die padreserwe voor van 'n gedeelte represents the road reserve of a portion van Nasionale Roete R31 of National Route	Vel Sheet	van 10 of	14
				Plan	P1244/24	8



Die Suid Afrikaanse Nasionale Padagentskap MSB Bpk The South African National Roads Agency SOC Ltd	Die figuur getoon The figure shown		stel die padreserwe voor van 'n gedeelte represents the road reserve of a portion van Nasionale Roete R31 of National Route	8	Plan P1244/24	Vel Sheet 11 of 14
---	---------------------------------------	---	--	---	---------------	--------------------

PADRESERVE KOÖRDINATE / ROAD RESERVE CO-ORDINATES									
LINKERKANT/LEFT HAND SIDE					REGTERKANT/RIGHT HAND SIDE				
	Y		X	WG25 °		Y		X	
L1	46 052.35	3	158	264.16	R1	46 076.71	3	158	286.60
L2	46 048.01	3	158	273.33	R2	46 063.75	3	158	322.68
L3	46 033.59	3	158	313.53	R3	46 056.20	3	158	350.53
L4	46 026.10	3	158	343.34	R4	46 023.96	3	158	502.59
L5	46 020.96	3	158	368.28	R5	45 957.75	3	158	803.43
L6	46 012.38	3	158	407.30	R6	45 951.58	3	158	831.46
L7	45 994.28	3	158	487.79	R7	45 945.43	3	158	859.42
L8	45 951.63	3	158	681.64	R8	45 939.18	3	158	887.34
L9	45 940.14	3	158	733.88	R9	45 932.93	3	158	915.25
L10	45 932.74	3	158	767.49	R10	45 926.69	3	158	943.17
L11	45 925.04	3	158	802.49	R11	45 923.91	3	158	955.58
L12	45 920.97	3	158	820.98	R12	45 917.34	3	158	984.93
L13	45 908.87	3	158	875.99	R13	45 911.38	3	159	011.57
L14	45 896.59	3	158	931.91	R14	45 905.32	3	159	038.68
L15	45 893.86	3	158	944.33	R15	45 898.00	3	159	071.38
L16	45 882.20	3	158	997.39	R16	45 878.30	3	159	159.46
L17	45 875.90	3	159	026.10	R17	45 872.15	3	159	186.95
L18	45 869.89	3	159	053.48	R18	45 829.03	3	159	393.29
L19	45 866.29	3	159	069.84	R19	45 788.95	3	159	575.90
L20	45 858.40	3	159	105.77	R20	45 767.96	3	159	671.56
L21	45 851.47	3	159	137.32	R21	45 754.43	3	159	743.24
L22	45 842.54	3	159	177.99	R22	45 749.75	3	159	760.65
L23	45 841.18	3	159	184.19	R23	45 731.94	3	159	843.41
L24	45 835.69	3	159	209.22	R24	45 705.19	3	159	936.23
L25	45 755.27	3	159	575.90	R25	45 688.73	3	159	975.84
L26	45 735.58	3	159	665.68	R26	45 631.24	3	160	089.43
L27	45 718.68	3	159	747.88	R27	45 602.03	3	160	129.74
L28	45 664.56	3	159	953.84	R28	45 550.43	3	160	186.27
L29	45 604.27	3	160	072.98	R29	45 392.52	3	160	367.03
L30	45 576.52	3	160	111.26	R30	44 053.21	3	161	671.67
L31	45 488.66	3	160	210.01	R31	44 000.41	3	161	726.90
L32	45 391.24	3	160	318.26	R32	43 974.43	3	161	756.11
L33	45 333.77	3	160	377.47	R33	43 925.37	3	161	817.04
L34	45 254.15	3	160	459.49	R34	43 856.89	3	161	912.12
L35	45 127.60	3	160	582.08	R35	43 769.99	3	162	064.94
L36	44 282.12	3	161	406.54	R36	43 694.26	3	162	244.98
L37	44 259.70	3	161	412.21	R37	43 664.79	3	162	338.36
L38	44 224.17	3	161	446.79	R38	43 605.71	3	162	658.64
L39	44 217.83	3	161	469.24	R39	43 501.59	3	163	228.46
L40	44 040.70	3	161	641.96	R40	42 933.33	3	166	358.61
L41	43 942.99	3	161	746.78	R41	42 916.09	3	166	448.96
L42	43 837.53	3	161	887.08	R42	42 897.82	3	166	526.59
L43	43 761.15	3	162	016.40	R43	42 856.38	3	166	658.63
L44	43 700.65	3	162	147.23	R44	42 824.65	3	166	741.43
L45	43 664.24	3	162	235.51	R45	42 773.29	3	166	847.27
L46	43 634.19	3	162	330.74	R46	42 742.16	3	166	905.26
L47	43 572.76	3	162	663.71	R47	42 675.87	3	167	009.50
L48	42 889.34	3	166	425.16	R48	42 584.78	3	167	130.80
L49	42 867.43	3	166	518.25	R49	42 494.53	3	167	227.14
L50	42 826.63	3	166	648.27	R50	42 364.23	3	167	357.33
L51	42 795.73	3	166	728.90	R51	41 989.07	3	167	731.64
					<div> <div>Vel</div> <div>Sheet</div> </div> <div>13</div> <div>Van</div> <div>of</div> <div>14</div> <div>P1244/24</div>				

PADRESERWE KOÖRDINATE / ROAD RESERVE CO-ORDINATES				
LINKERKANT/LEFT HAND SIDE			REGTERKANT/RIGHT HAND SIDE	
	Y	X	WG25 °	
L52	42 745.24	3 166 832.94		R52 41 883.92 3 167 840.26
L53	42 714.96	3 166 889.35		R53 41 786.73 3 167 932.67
L54	42 649.96	3 166 991.57		R54 40 564.47 3 169 151.00
L55	42 559.60	3 167 111.89		R55 40 410.43 3 169 281.15
L56	42 470.69	3 167 206.43		R56 39 842.39 3 169 563.10
L57	40 560.74	3 169 112.93		R57 39 467.96 3 169 740.99
L58	40 431.08	3 169 219.29		R58 36 200.20 3 171 322.31
L59	40 325.38	3 169 288.00		R59 35 816.77 3 171 509.21
L60	39 839.80	3 169 526.81		R60 34 880.48 3 171 961.54
L61	39 432.88	3 169 723.64		R61 34 133.44 3 172 323.24
L62	36 206.91	3 171 284.08		R62 34 095.35 3 172 341.98
L63	33 861.80	3 172 420.14		R63 33 739.68 3 172 513.96
L64	33 453.20	3 172 622.90		R64 33 606.81 3 172 578.97
L65	33 326.42	3 172 712.08		R65 33 469.56 3 172 649.90
L66	33 238.71	3 172 794.35		R66 33 346.36 3 172 736.57
L67	33 175.99	3 172 866.88		R67 33 261.46 3 172 816.19
L68	33 121.85	3 172 942.47		R68 33 200.76 3 172 886.39
L69	33 067.74	3 173 037.02		R69 33 148.40 3 172 959.51
L70	33 030.56	3 173 120.11		R70 33 095.86 3 173 051.31
L71	32 999.07	3 173 211.51		R71 33 059.89 3 173 131.69
L72	32 219.28	3 175 992.05		R72 33 029.16 3 173 220.89
L73	32 195.03	3 176 070.33		R73 32 249.50 3 176 000.96
L74	32 170.06	3 176 137.52		R74 32 224.86 3 176 080.49
L75	32 140.44	3 176 203.16		R75 32 199.21 3 176 149.50
L76	32 106.35	3 176 269.05		R76 32 168.81 3 176 216.88
L77	32 063.88	3 176 338.36		R77 32 133.80 3 176 284.53
L78	32 023.84	3 176 396.76		R78 32 090.32 3 176 355.50
L79	31 933.78	3 176 502.42		R79 32 048.88 3 176 415.94
L80	31 814.82	3 176 612.74		R80 31 956.55 3 176 524.26
L81	30 977.72	3 177 330.12		R81 31 835.78 3 176 636.26
				R82 31 007.72 3 177 344.66

Vel Sheet 14

Van of 14

P1244/24