
GOVERNMENT NOTICES • GOEWERMENTSKENNISGEWINGS

DEPARTMENT OF TRANSPORT

NO. 5673

13 December 2024

**THE SOUTH AFRICAN NATIONAL ROADS
AGENCY SOC LIMITED****Registration No: 1998/009584/30**

DECLARATION AMENDMENT OF NATIONAL ROAD R382 SECTION 2

AMENDMENT OF DECLARATION No. 2670 OF 2022.

By virtue of section 40(1)(b) of the South African National Roads Agency Limited and the National Roads Act 1998 (Act No. 7 of 1998), I hereby amend Declaration No. 2670 of 2022 by substituting paragraph J of the Schedule, being the descriptive declaration of the route from Port Nolloth up to intersection with National Road N7 Section 8, at Steinkopf, with the accompanying sheets 1 to 38 of Plan No. P1246/24.

R382 Section 2 starts in the town of Port Nolloth at the intersection with Road R382 Section 1, from where it proceeds in a general easterly direction along the street known as Main Road, at time of declaration.

(National Road R382 Section 2: Port Nolloth – Steinkopf)
MINISTER OF TRANSPORT

DEPARTEMENT VAN VERVOER

NO. 5673

13 Desember 2024

**DIE SUID-AFRIKAANSE NASIONALE
PADAGENTSKAP MSB BEPERK**

Registrasie No: 1998/009584/30

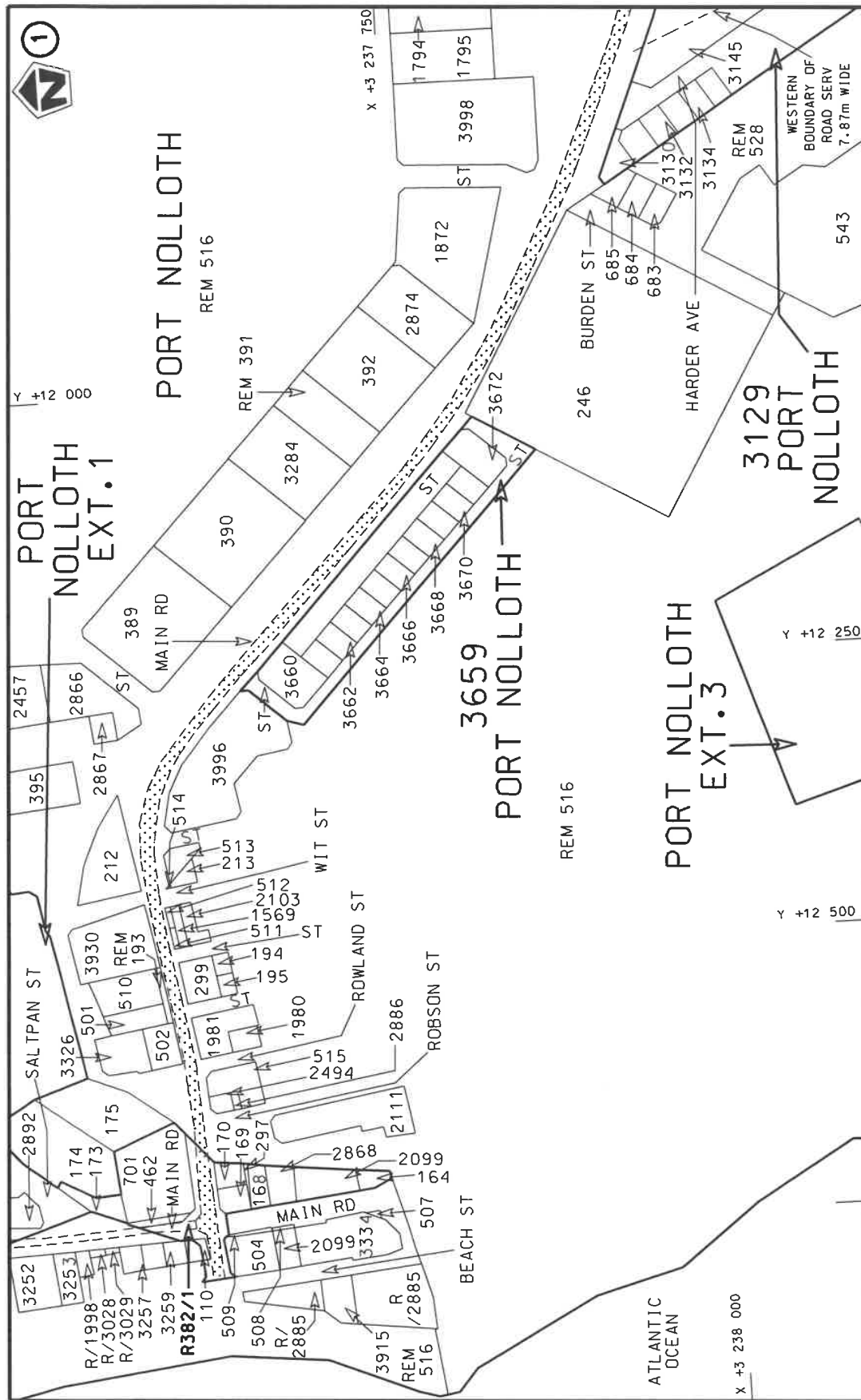
VERKLARING WYSIGING VAN NASIONALE PAD R382 SEKSIE 2

WYSIGING VAN VERKLARING No. 2670 VAN 2022.

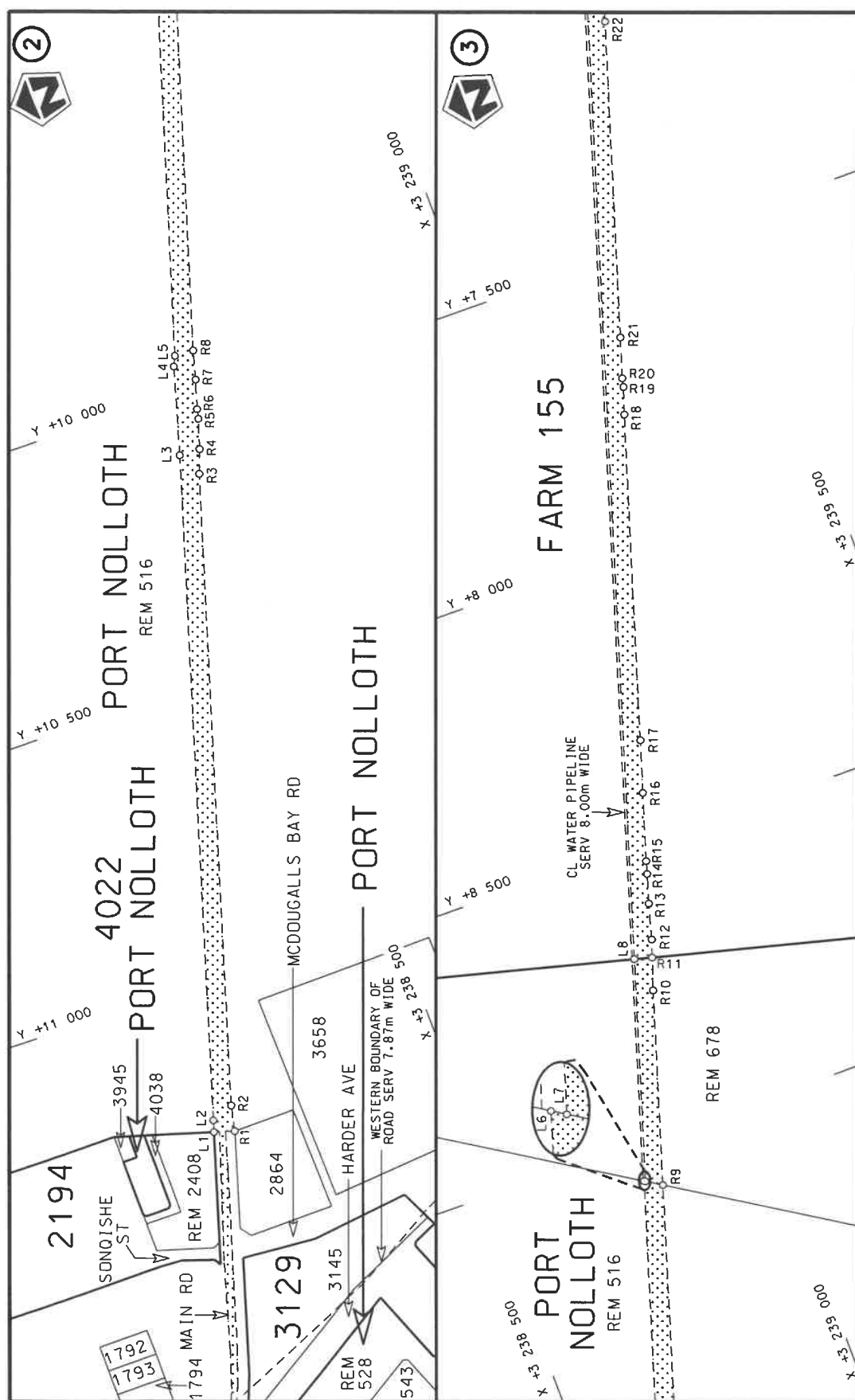
Kragtens Artikel 40(1)(b) van die Suid-Afrikaanse Nasionale Padagentskap Beperk en Nasionale Paaie Wet 1998 (Wet No. 7 van 1998), wysig ek hiermee Verklaring No. 2670 van 2022 deur paragraaf J van die Skedule te vervang, synde die gedeelte van die beskrywende verklaring van die pad vanaf Port Nolloth tot by die aansluiting met Nasionale Pad N7 Seksie 8, by Steinkopf, met bygaande velle 1 tot 38 van Plan No. P1246/24.


R382 Seksie 2 begin in die dorp van Port Nolloth by die aansluiting met Pad R382 Seksie 1, en daarvandaan in 'n algemene oostelike rigting langs die straat bekend as Hoofpad, tydens datum van verklaring.

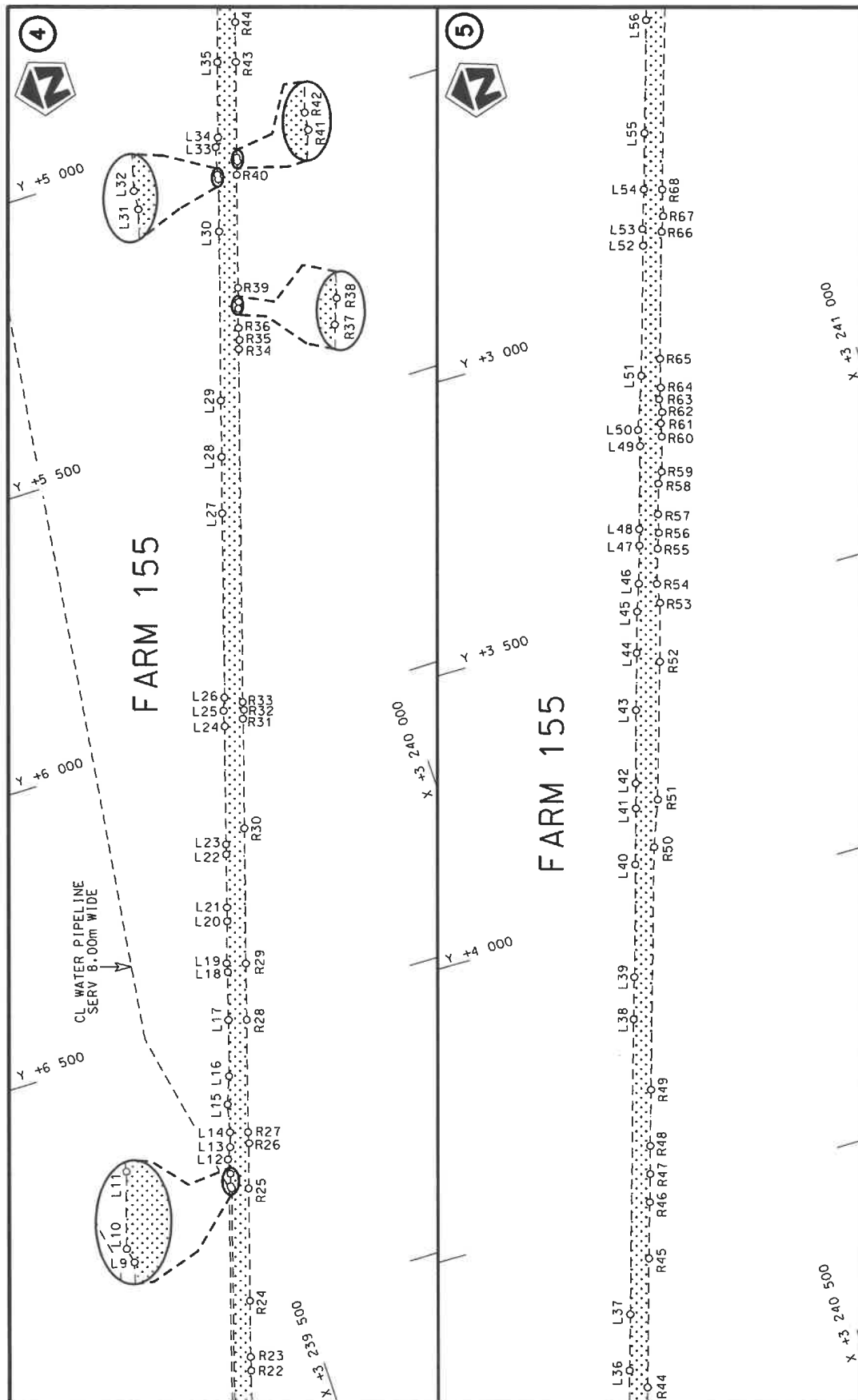
(Nasionale Pad R382 Seksie 2: Port Nolloth – Steinkopf)
MINISTER VAN VERVOER

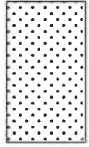


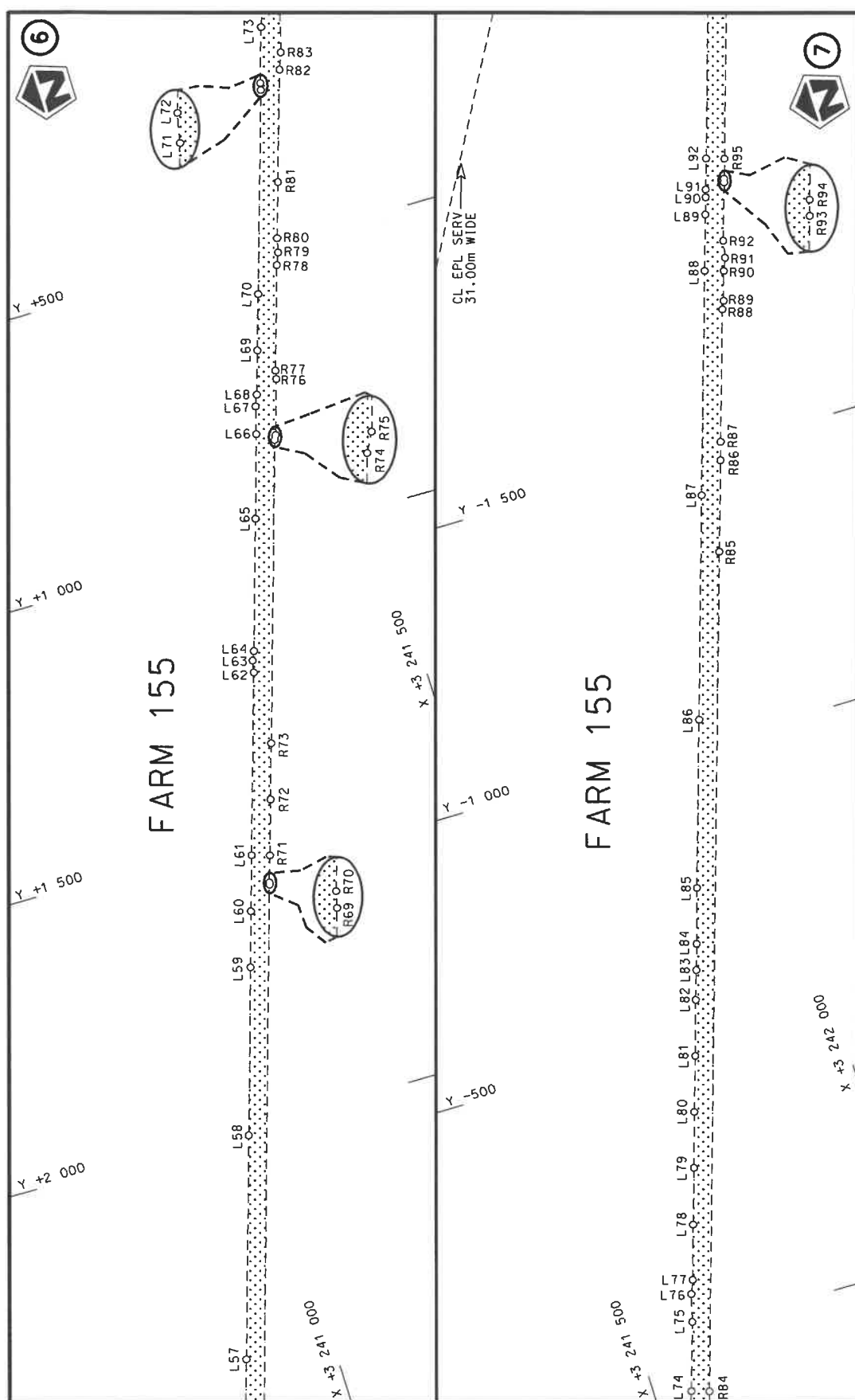
Die Suid Afrikaanse Nasionale Padagentskap MSB Bpk The South African National Roads Agency SOC Ltd	Die figuur getoon The figure shown	<div data-bbox="1308 1075 1396 1220" data-label="Image"> </div>	stel die padreserwe voor van 'n gedeelte represents the road reserve of a portion van Nasionale Roete R382 of National Route	Vel Sheet 1 of 38 Plan P1246/24
---	---------------------------------------	---	---	---------------------------------------




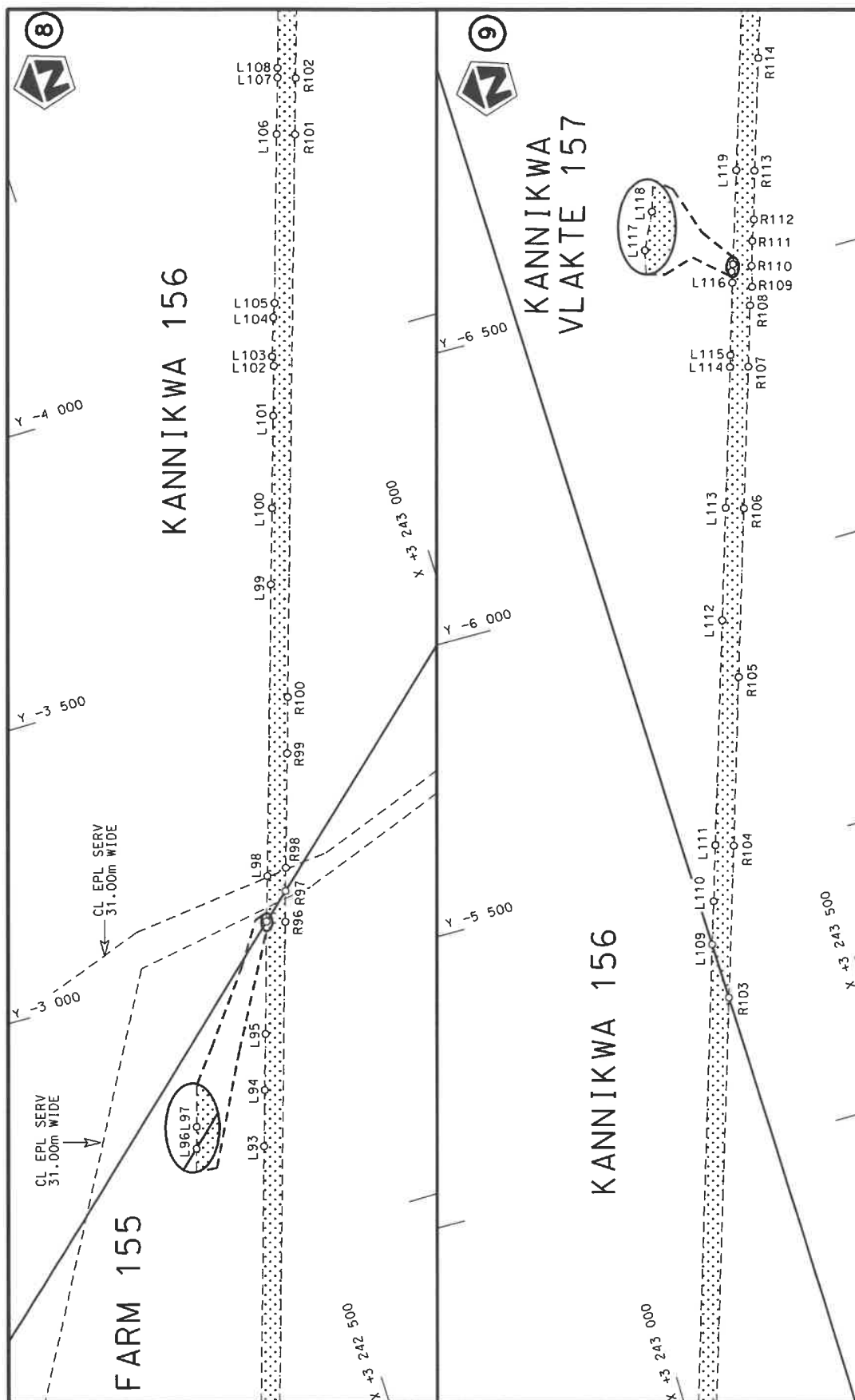
Die Suid Afrikaanse Nasionale Padagentskap MSB Bpk	Die figuur getoon		steldie padreserwe voor van 'n gedeelte represents the road reserve of a portion	Vel Sheet	2 of	38
The South African National Roads Agency SOC Ltd	The figure shown		van Nasionale Roete R382 of National Route	Plan	2	P1246/24




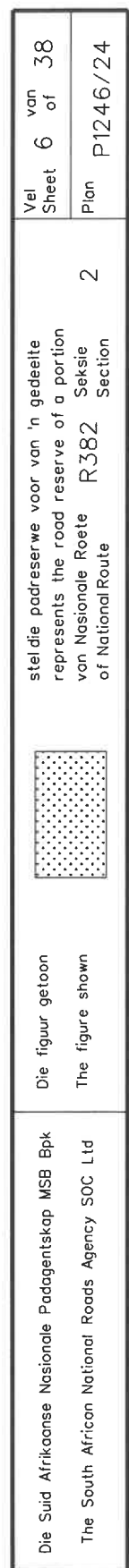
Die Suid Afrikaanse Nasionale Padagentskap MSB Bpk The South African National Roads Agency SOC Ltd	Die figuur getoon The figure shown	 steldie padreserwe voor van 'n gedeelte represents the road reserve of a portion van Nasionale Roete R382 of National Route	Vel Sheet 3 of 38 Plan P1246/24
---	---------------------------------------	---	---------------------------------------

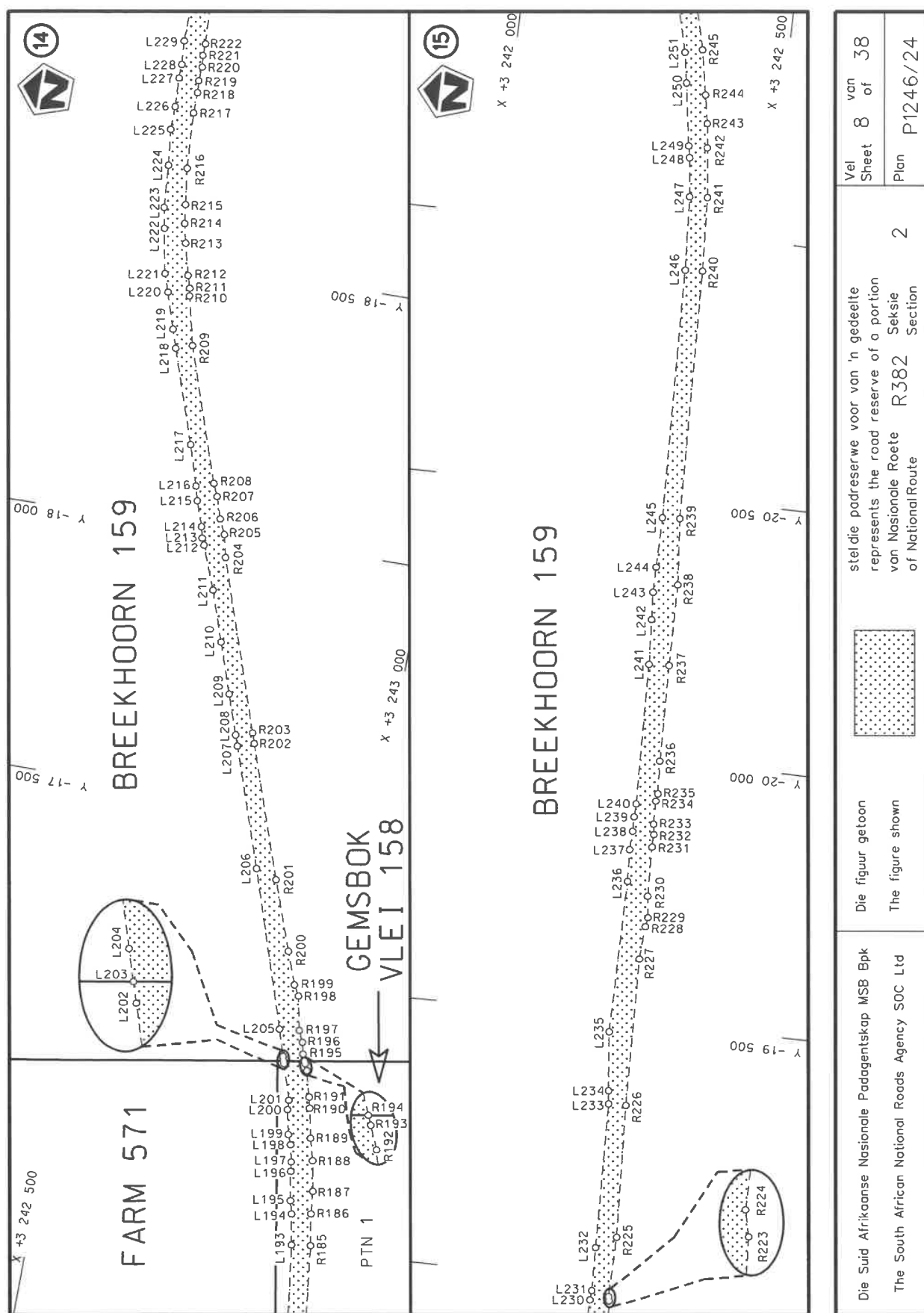


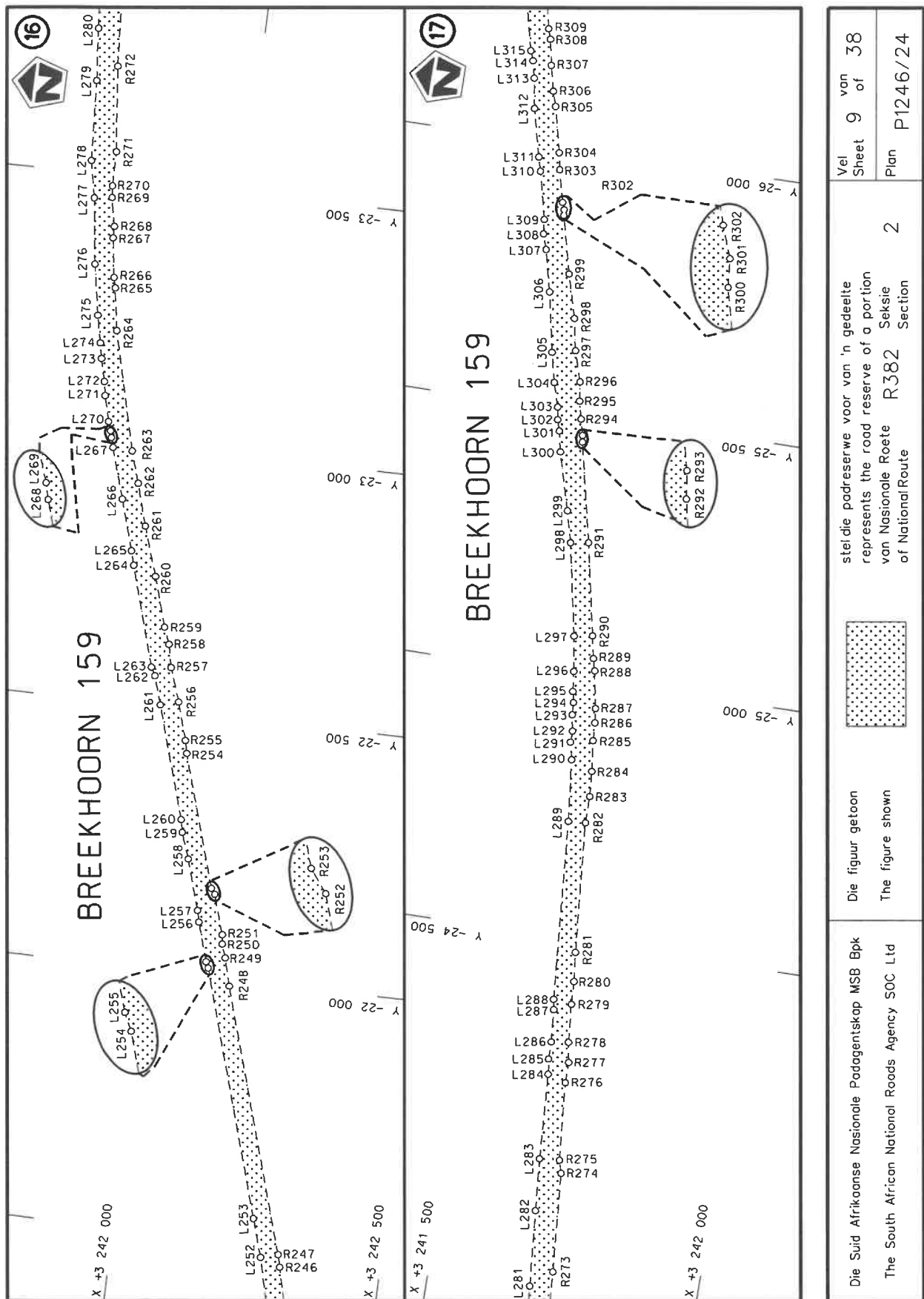
Die Suid Afrikaanse Nasionale Padagentskap MSB Bpk	Die figuur getoon		steldie padreserwe voor van 'n gedeelte represents the road reserve of a portion	Vel Sheet	4 of	38
The South African National Roads Agency SOC Ltd	The figure shown		van Nasionale Roete R382 of National Route	Plan	P1246/24	2

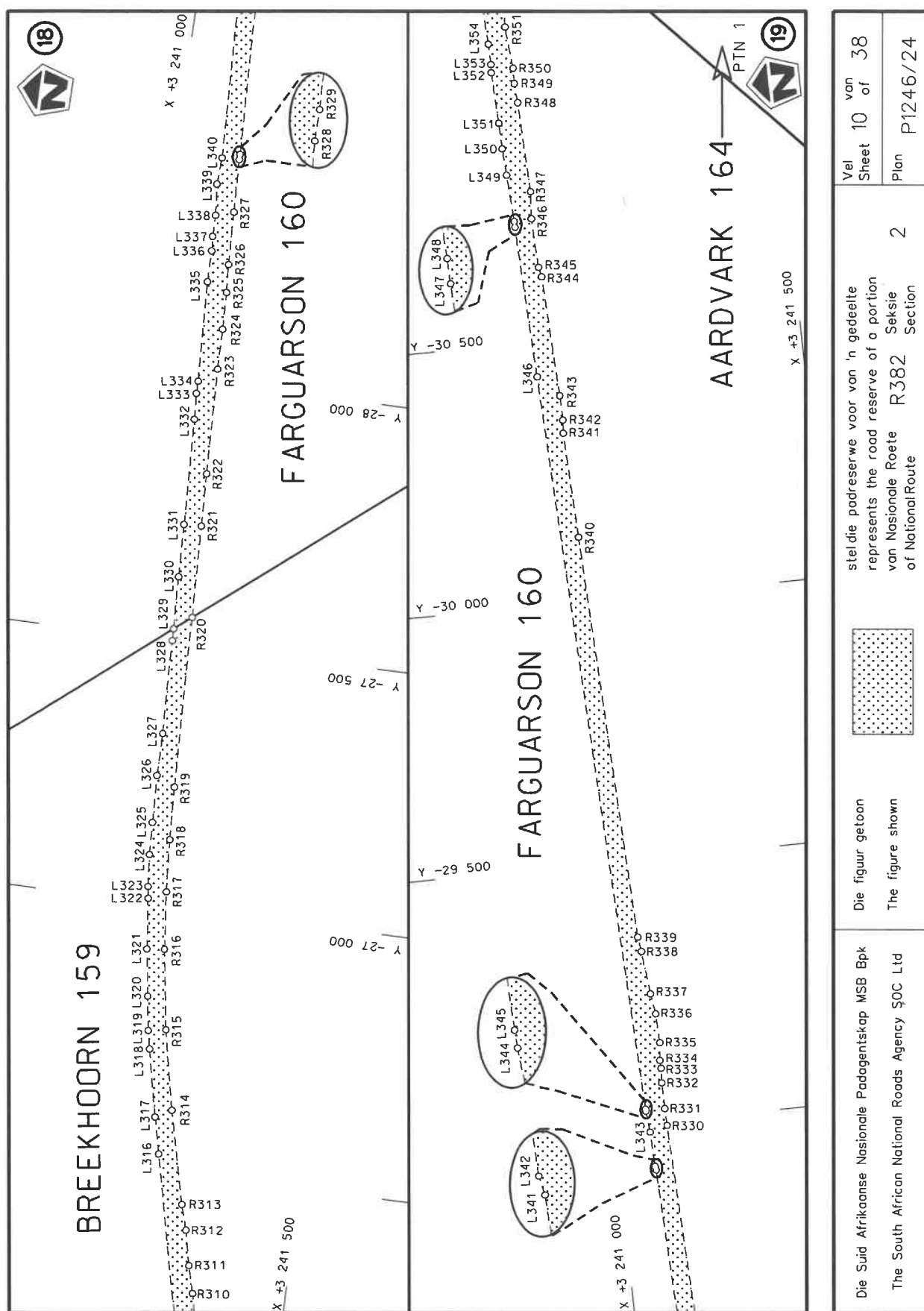


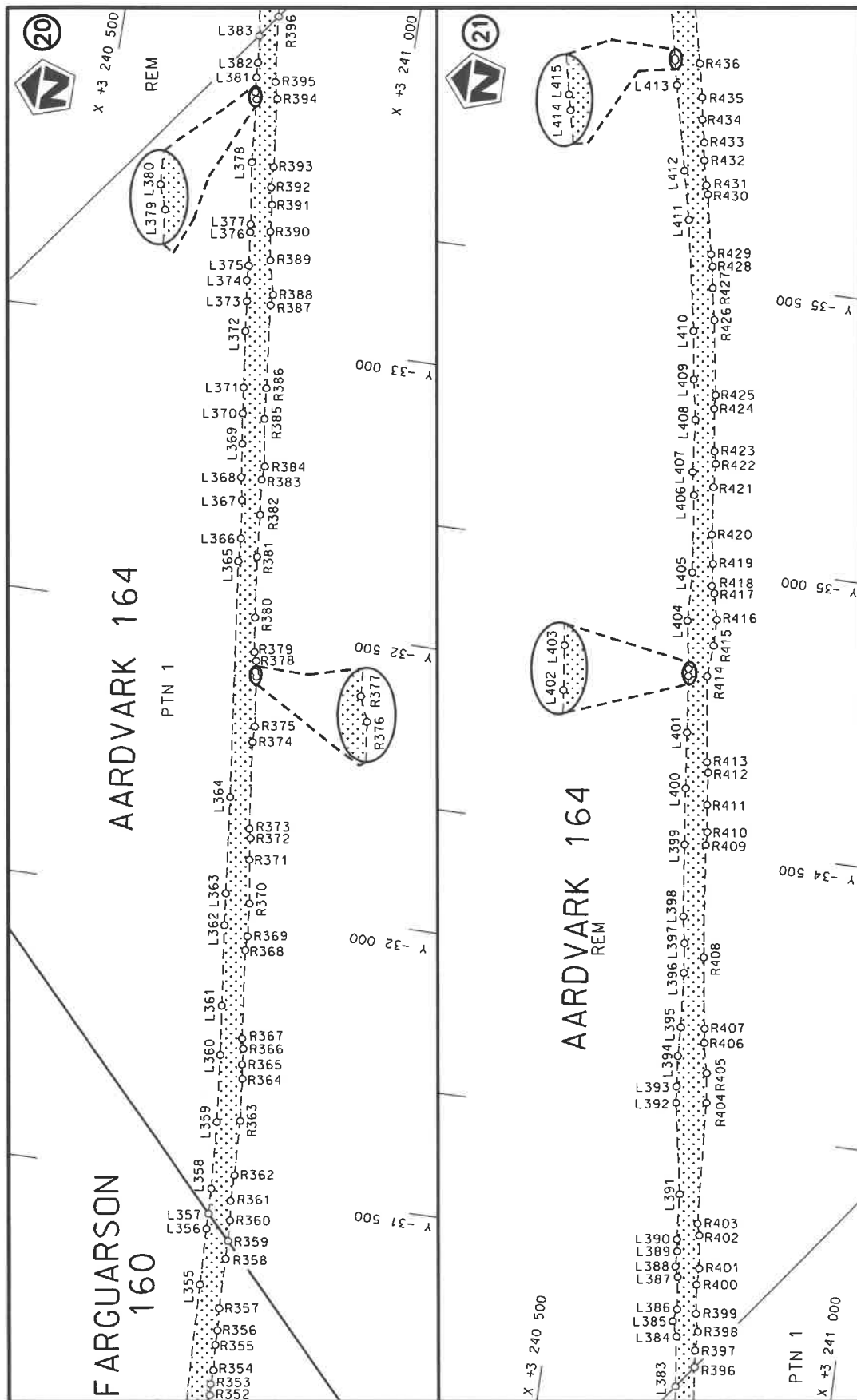
Die Suid Afrikaanse Nasionale Padagentskap MSB Bpk	Die figuur getoon		steldie padreserwe voor van 'n gedeelte represents the road reserve of a portion	Vel Sheet	5 of 38
The South African National Roads Agency SOC Ltd	The figure shown		van Nasionale Roete of National Route	R382 Seksie Section	2



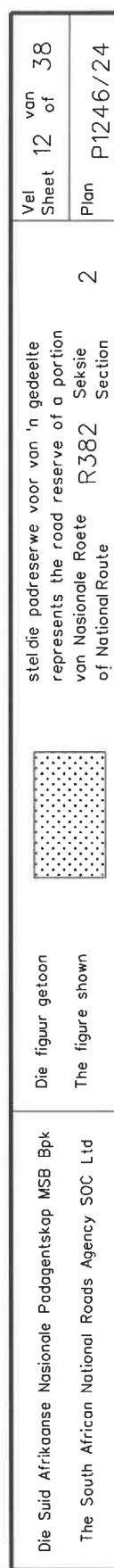


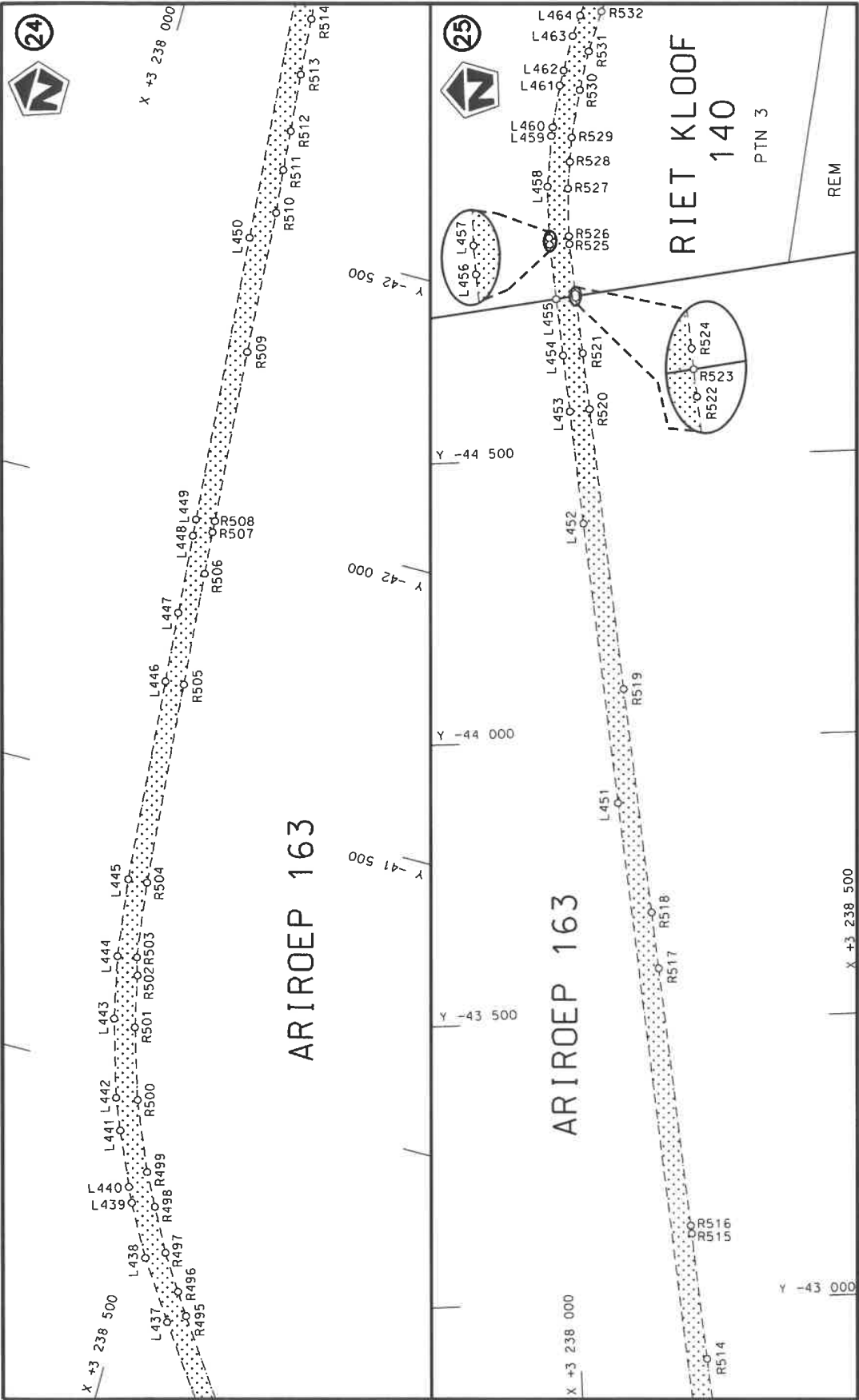




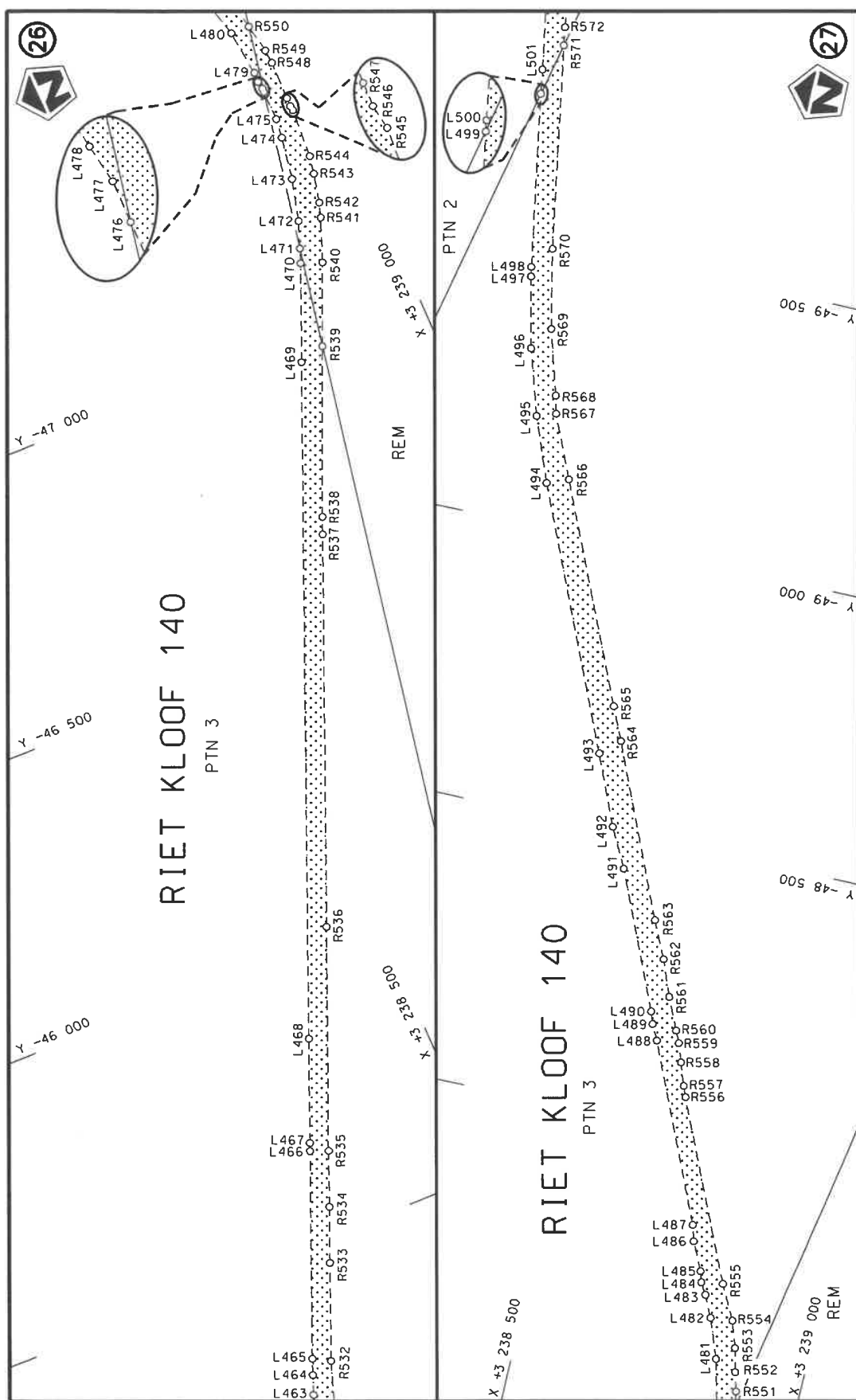


Vel Sheet 11 of 38	stelt die padreserwe voor van 'n gedeelte represents the road reserve of a portion van Nasionale Roete R382 of National Route	Die figuur getoon The figure shown	Die Suid Afrikaanse Nasionale Padagentskap MSB Bpk The South African National Roads Agency SOC Ltd
Plan P1246/24	2		

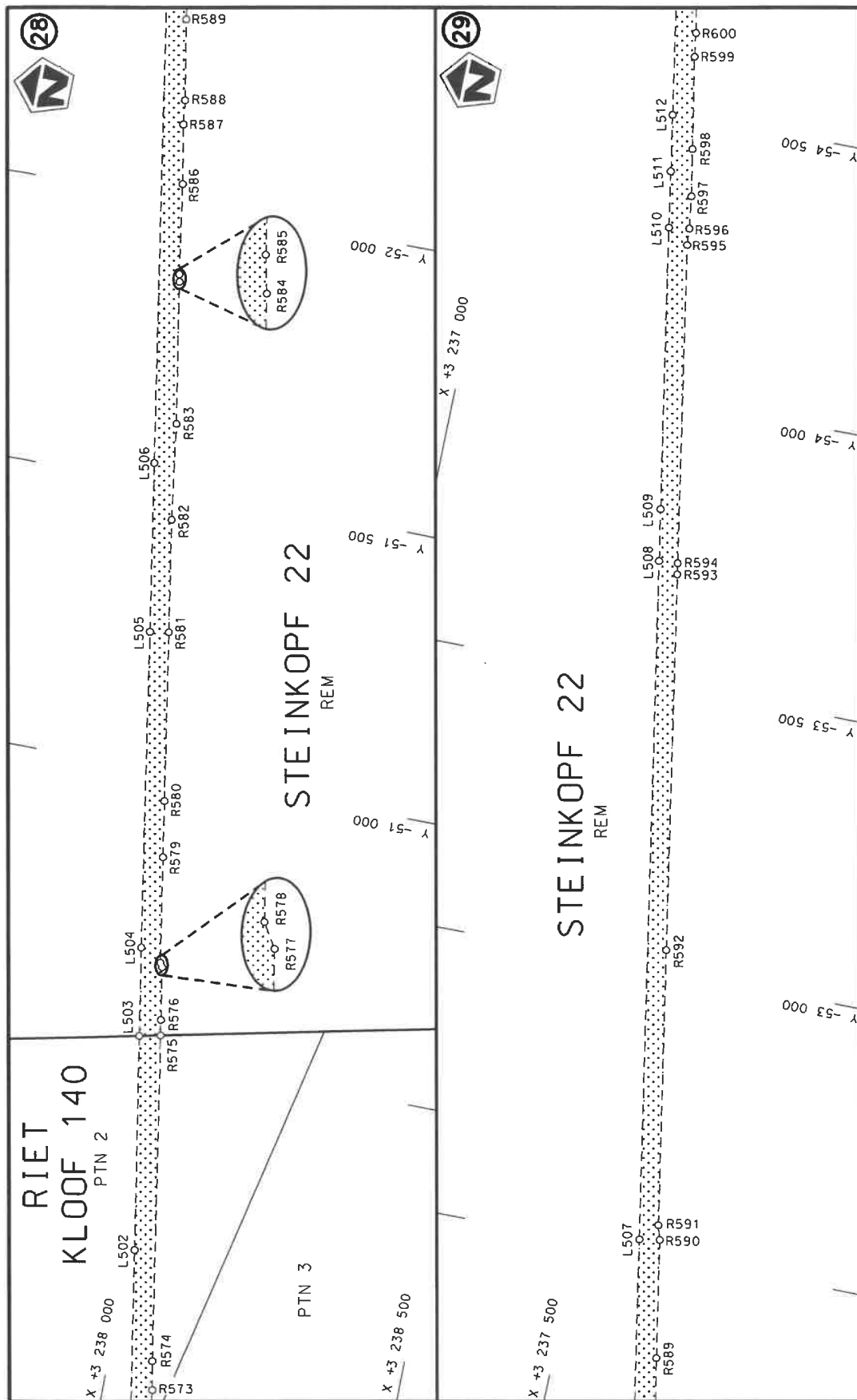


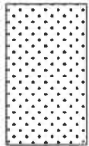


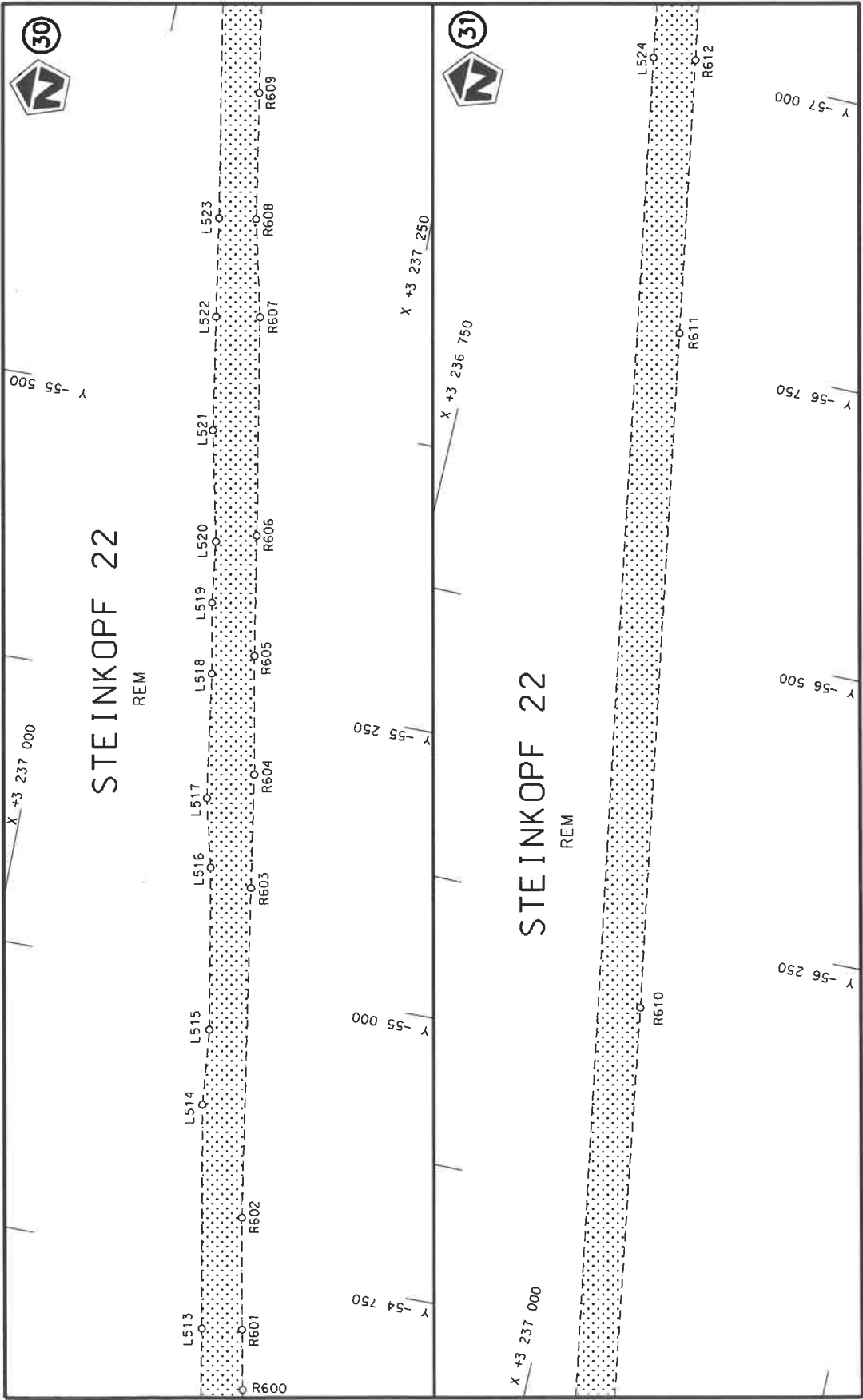
Die Suid Afrikaanse Nasionale Padagentskap MSB Bpk The South African National Roads Agency SOC Ltd		Die figuur getoon The figure shown		steldie podreserwe voor van 'n gedeelte represents the road reserve of a portion van Nasionale Roete R382 of National Route		Vel Sheet	van 13 of	38
							Plan	P1246/24
							2	

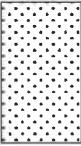


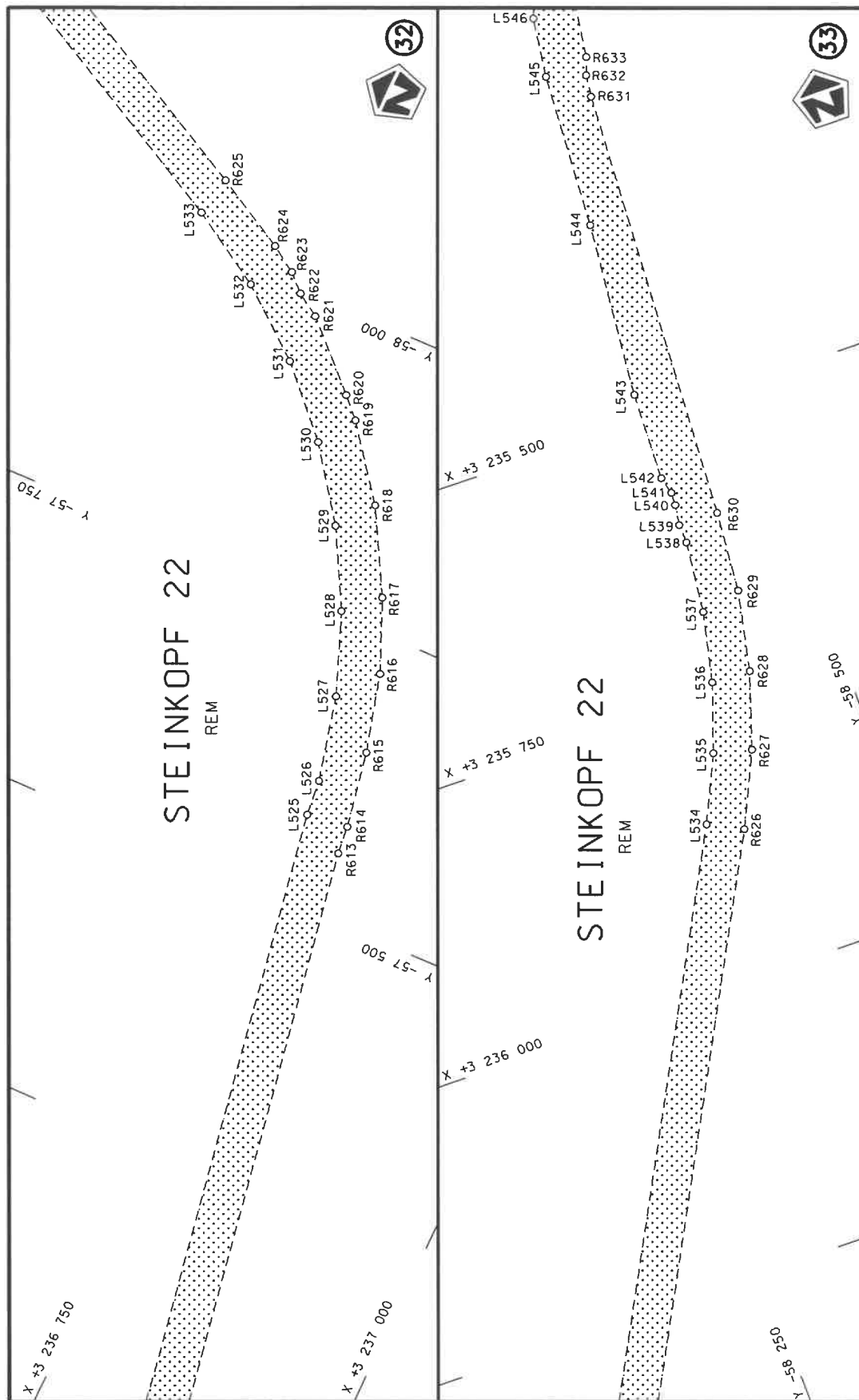
Vel Sheet 14 of 38	Plan P1246/24
<p>stel die padreserwe voor van 'n gedeelte represents the road reserve of a portion van Nasionale Roete R382 Seksie of National Route Section</p>	2
<p>Die figuur getoon The figure shown</p>	<p>Die Suid Afrikaanse Nasionale Padagentskap MSB Bpk The South African National Roads Agency SOC Ltd</p>



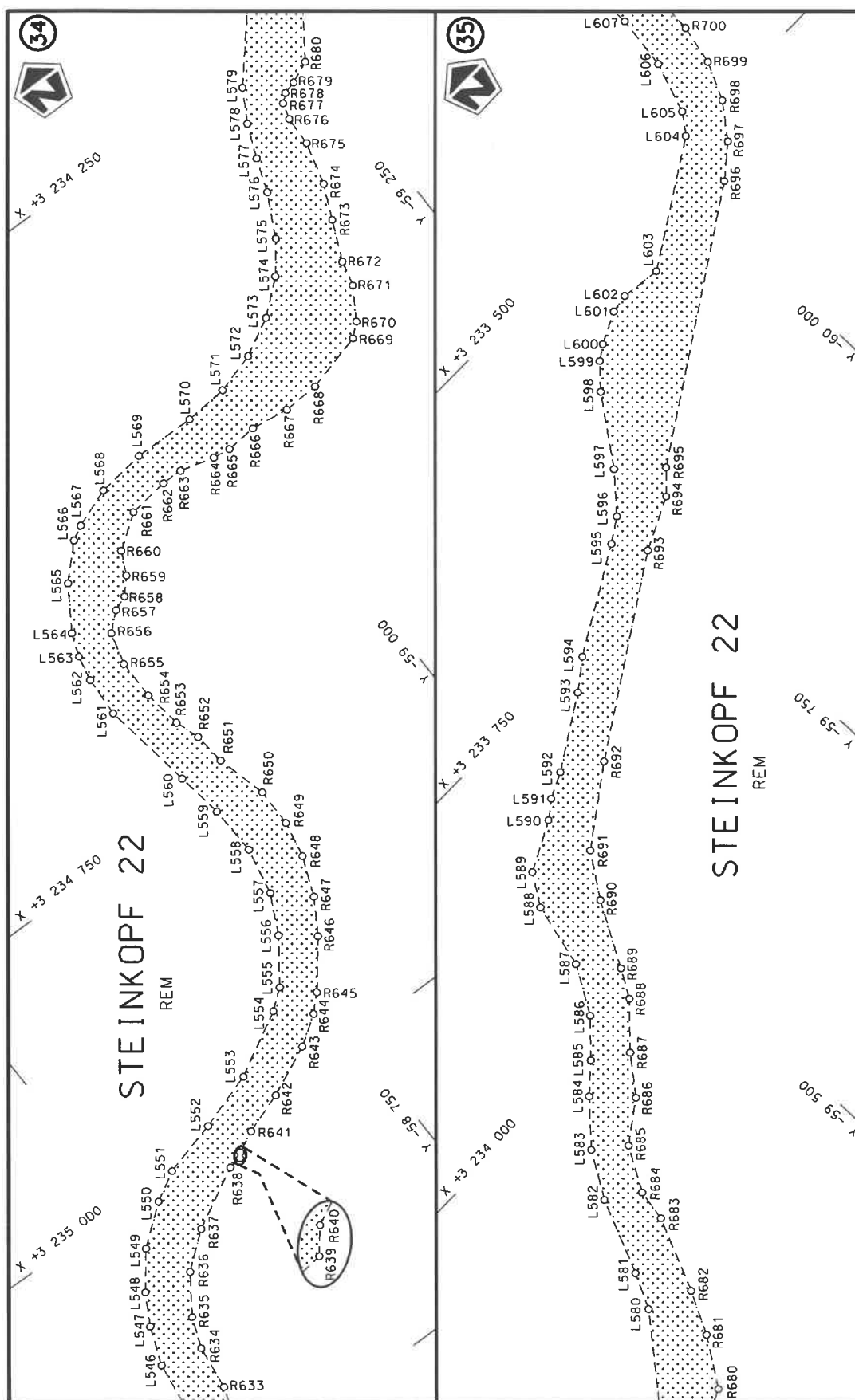
Vel Sheet 15 of 38	stel die podreserwe voor van 'n gedeelte represents the road reserve of a portion van Nasionale Roete R382 of National Route	Die figuur getoon The figure shown	Die Suid Afrikaanse Nasionale Padagentskap MSB Bpk The South African National Roads Agency SOC Ltd
Plan P1246/24	2		



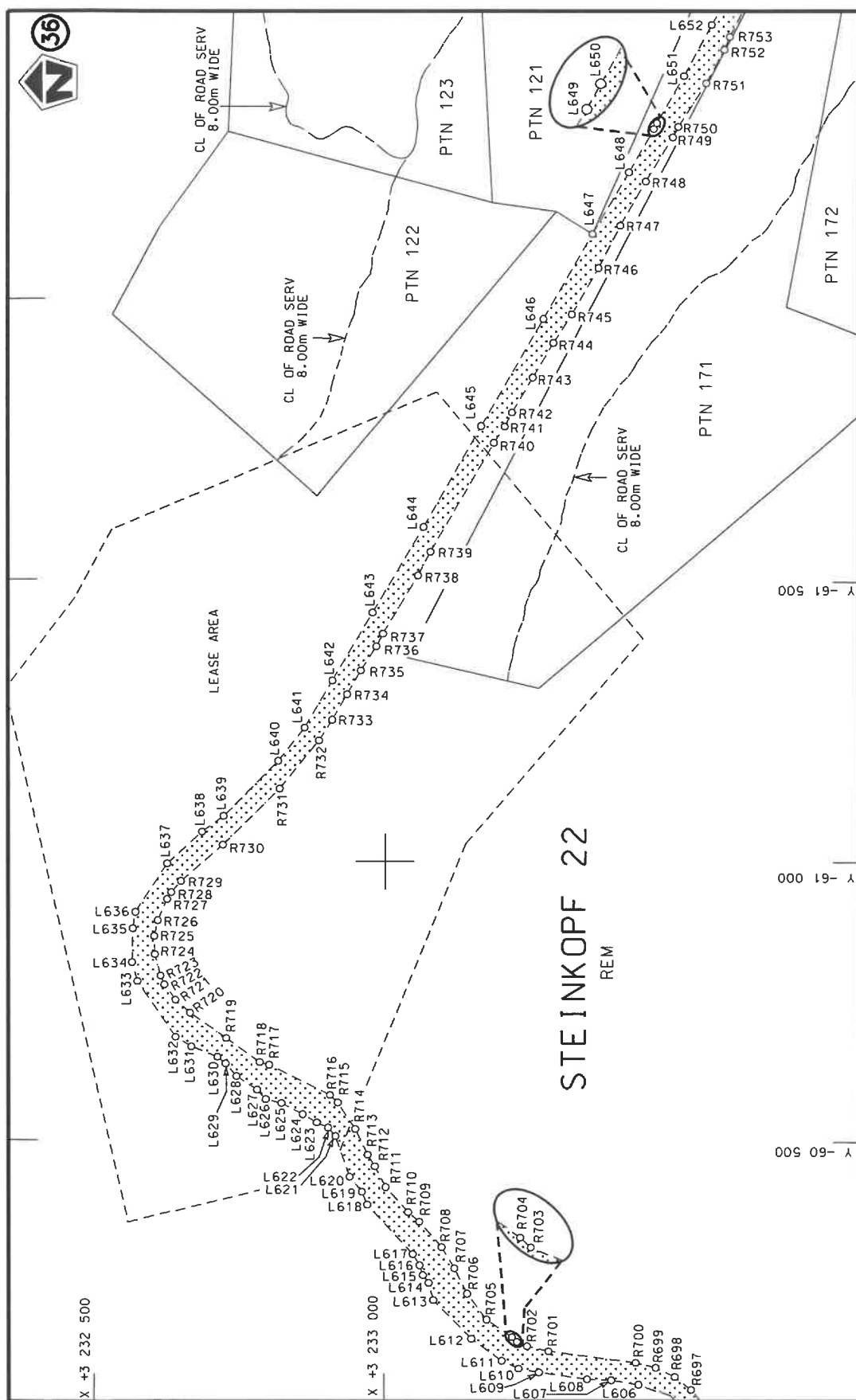
Die Suid Afrikaanse Nasionale Padagentskap MSB Bpk The South African National Roads Agency SOC Ltd	Die figuur getoon The figure shown		stel die padreserwe voor van 'n gedeelte represents the road reserve of a portion van Nasionale Roete R382 of National Route	Vel Sheet	van 16	of 38
				Plan	P1246/24	




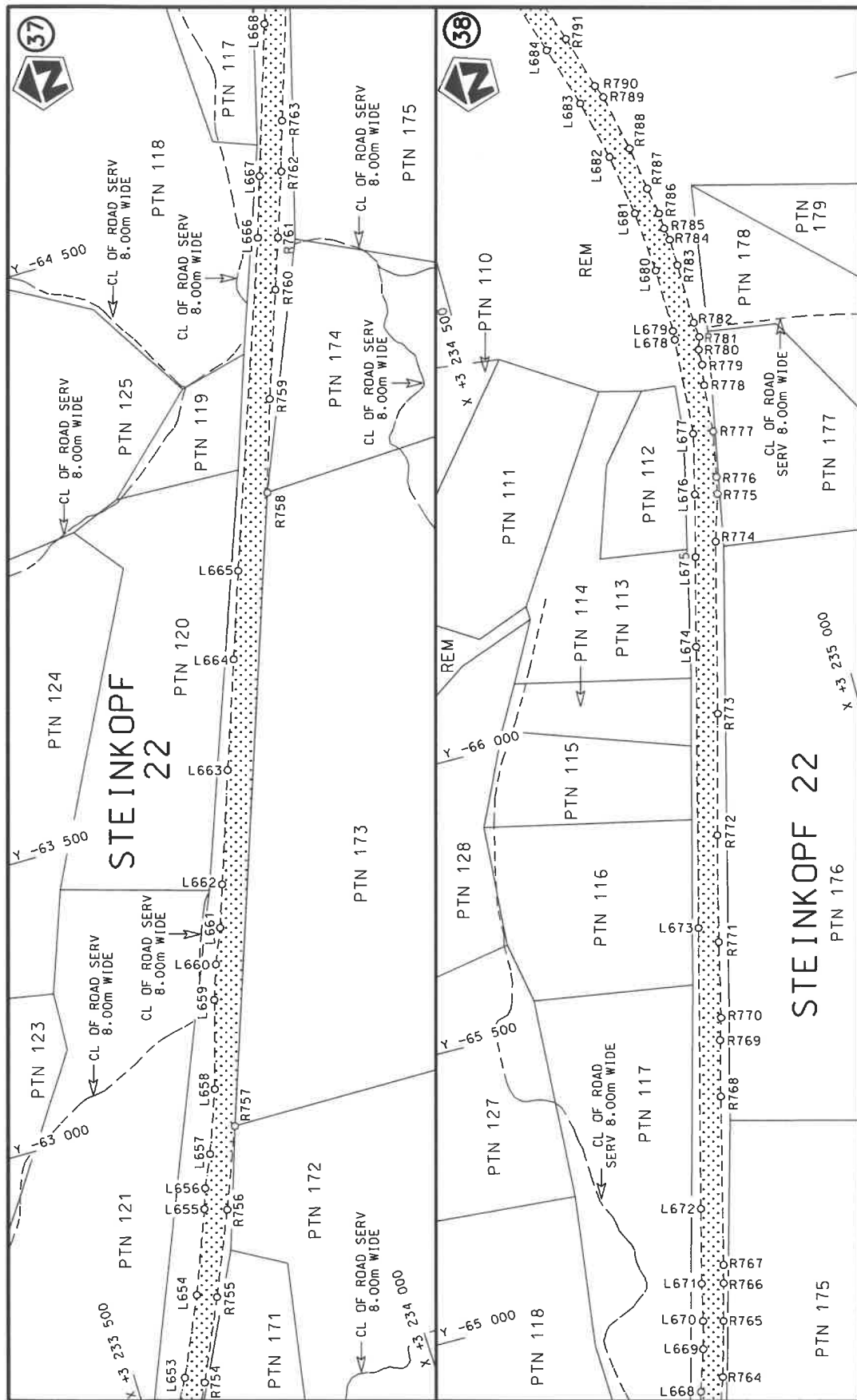
Die Suid Afrikaanse Nasionale Padagentskap MSB Bpk The South African National Roads Agency SOC Ltd	Die figuur getoon The figure shown	steldie padreserwe voor van 'n gedeelte represents the road reserve of a portion van Nasionale Roete R382 of National Route Section	2
Vel Sheet 17 of 38	Plan P1246/24		




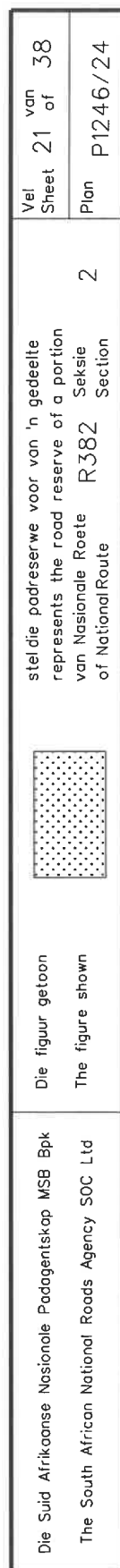
Die Suid Afrikaanse Nasionale Padagentskap MSB Bpk The South African National Roads Agency SOC Ltd	Die figuur getoon The figure shown	<div data-bbox="1305 1075 1396 1220" data-label="Image"> </div>
stel die podreserwe voor van 'n gedeelte represents the road reserve of a portion van Nasionale Roete R382 of National Route	2	Vel Sheet 18 of 38 Plan P1246/24

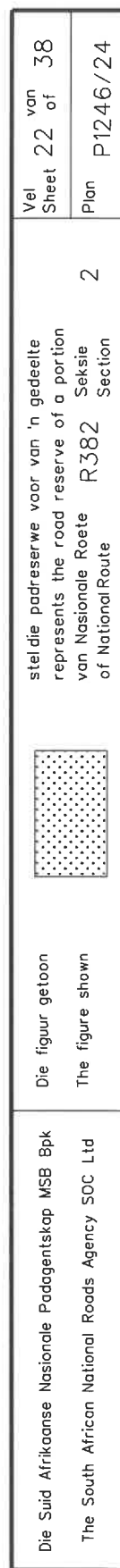


Vel Sheet 19 of 38	Plan P1246/24
stelt die padreserwe voor van 'n gedeelte represents the road reserve of a portion van Nasionale Roete R382	2
Die figuur getoon The figure shown	
Die Suid Afrikaanse Nasionale Padagentskap MSB Bpk The South African National Roads Agency SOC Ltd	Section of National Route



Die Suid Afrikaanse Nasionale Padagentskap MSB Bpk The South African National Roads Agency SOC Ltd	Die figuur getoon The figure shown		steldie padreserwe voor van 'n gedeelte represents the road reserve of a portion van Nasionale Roete R382 of National Route	Vel Sheet 20 of 38 Plan P1246/24
---	---------------------------------------	---	--	--





PADRESERWE KOÖRDINATE / ROAD RESERVE CO-ORDINATES									
LINKERKANT/LEFT HAND SIDE					REGTERKANT/RIGHT HAND SIDE				
	Y		X	WG 17°		Y		X	
L1	11 261.52	3	238	081.46	R1	11 272.19	3	238	115.43
L2	11 241.67	3	238	087.49	R2	11 227.06	3	238	125.57
L3	10 107.87	3	238	441.21	R3	10 150.43	3	238	461.45
L4	9 955.93	3	238	485.66	R4	10 109.31	3	238	476.98
L5	9 938.71	3	238	493.98	R5	10 057.69	3	238	493.77
L6	9 065.80	3	238	766.31	R6	10 040.92	3	238	497.29
L7	9 067.19	3	238	768.51	R7	9 990.59	3	238	513.29
L8	8 687.97	3	238	886.85	R8	9 940.42	3	238	526.97
L9	6 782.25	3	239	481.56	R9	9 083.49	3	238	794.31
L10	6 777.91	3	239	480.74	R10	8 751.10	3	238	898.01
L11	6 756.82	3	239	487.37	R11	8 695.62	3	238	916.66
L12	6 731.55	3	239	491.14	R12	8 664.95	3	238	926.97
L13	6 711.68	3	239	501.56	R13	8 602.95	3	238	944.23
L14	6 686.69	3	239	509.41	R14	8 552.43	3	238	959.66
L15	6 638.07	3	239	520.88	R15	8 530.17	3	238	965.96
L16	6 591.12	3	239	538.75	R16	8 414.07	3	239	002.36
L17	6 495.67	3	239	568.73	R17	8 324.46	3	239	030.72
L18	6 414.28	3	239	594.06	R18	7 769.82	3	239	204.05
L19	6 398.95	3	239	596.99	R19	7 723.17	3	239	219.66
L20	6 328.23	3	239	620.96	R20	7 708.00	3	239	222.88
L21	6 304.80	3	239	628.29	R21	7 638.32	3	239	244.90
L22	6 214.78	3	239	656.22	R22	7 100.79	3	239	412.87
L23	6 197.70	3	239	661.37	R23	7 077.54	3	239	419.48
L24	5 997.52	3	239	723.93	R24	6 982.21	3	239	449.44
L25	5 970.54	3	239	730.49	R25	6 791.29	3	239	508.96
L26	5 948.66	3	239	739.20	R26	6 715.21	3	239	534.62
L27	5 636.50	3	239	836.53	R27	6 695.88	3	239	538.90
L28	5 541.09	3	239	866.42	R28	6 504.99	3	239	598.53
L29	5 445.58	3	239	896.09	R29	6 409.48	3	239	628.17
L30	5 159.24	3	239	985.50	R30	6 180.00	3	239	699.87
L31	5 070.89	3	240	012.89	R31	5 994.41	3	239	757.64
L32	5 062.48	3	240	013.63	R32	5 979.66	3	239	763.99
L33	5 015.33	3	240	026.10	R33	5 965.99	3	239	766.52
L34	5 000.32	3	240	034.95	R34	5 367.95	3	239	953.24
L35	4 872.83	3	240	074.86	R35	5 352.91	3	239	959.36
L36	4 777.39	3	240	104.65	R36	5 332.11	3	239	964.43
L37	4 681.97	3	240	134.46	R37	5 299.48	3	239	974.54
L38	4 180.98	3	240	290.58	R38	5 288.36	3	239	978.99
L39	4 109.24	3	240	313.36	R39	5 264.03	3	239	985.63
L40	3 918.13	3	240	372.32	R40	5 073.09	3	240	045.18
L41	3 822.76	3	240	402.22	R41	5 050.47	3	240	053.56
L42	3 779.81	3	240	414.59	R42	5 043.89	3	240	054.32
L43	3 655.64	3	240	452.16	R43	4 882.24	3	240	104.87
L44	3 558.44	3	240	482.54	R44	4 814.88	3	240	125.79
L45	3 488.55	3	240	504.28	R45	4 595.74	3	240	193.92
L46	3 441.91	3	240	521.36	R46	4 500.36	3	240	223.90
L47	3 377.48	3	240	541.55	R47	4 452.68	3	240	239.02
L48	3 349.40	3	240	549.70	R48	4 404.87	3	240	253.65
L49	3 208.47	3	240	593.66	R49	4 309.38	3	240	283.33
L50	3 180.36	3	240	598.05	R50	3 897.62	3	240	412.19
L51	3 089.76	3	240	631.13	R51	3 818.78	3	240	442.61
					<div> <div>Vel</div> <div>Sheet</div> </div> <div>23</div> <div>Van</div> <div>of</div> <div>38</div> <div>P1246/24</div>				

PADRESERWE KOÖRDINATE / ROAD RESERVE CO-ORDINATES						
LINKERKANT/LEFT HAND SIDE				REGTERKANT/RIGHT HAND SIDE		
	Y	X	WG 17°		Y	X
L52	2 869.54	3 240 699.81		R52	3 584.91	3 240 516.21
L53	2 840.80	3 240 707.35		R53	3 485.05	3 240 546.49
L54	2 774.16	3 240 729.74		R54	3 451.11	3 240 550.99
L55	2 678.73	3 240 759.29		R55	3 391.69	3 240 570.16
L56	2 487.76	3 240 818.89		R56	3 365.37	3 240 580.01
L57	2 392.39	3 240 848.80		R57	3 333.24	3 240 588.17
L58	2 010.56	3 240 967.94		R58	3 281.36	3 240 604.46
L59	1 724.14	3 241 057.29		R59	3 263.02	3 240 615.73
L60	1 628.60	3 241 086.71		R60	3 203.29	3 240 633.81
L61	1 533.17	3 241 116.69		R61	3 179.88	3 240 638.96
L62	1 222.11	3 241 213.99		R62	3 161.80	3 240 646.96
L63	1 201.36	3 241 218.02		R63	3 138.14	3 240 648.33
L64	1 185.59	3 241 225.33		R64	3 119.17	3 240 657.27
L65	960.59	3 241 295.49		R65	3 069.83	3 240 670.41
L66	816.66	3 241 340.16		R66	2 854.86	3 240 737.43
L67	768.90	3 241 353.19		R67	2 828.86	3 240 747.93
L68	749.58	3 241 360.98		R68	2 783.50	3 240 759.68
L69	674.17	3 241 384.51		R69	1 592.40	3 241 131.10
L70	578.80	3 241 414.48		R70	1 588.45	3 241 132.03
L71	232.02	3 241 522.68		R71	1 542.59	3 241 146.74
L72	219.85	3 241 525.26		R72	1 447.10	3 241 176.41
L73	124.96	3 241 554.92		R73	1 351.69	3 241 206.31
L74	101.54	3 241 563.46		R74	835.33	3 241 367.23
L75	- 17.67	3 241 600.63		R75	827.39	3 241 371.47
L76	- 65.78	3 241 613.17		R76	732.30	3 241 401.14
L77	- 89.36	3 241 622.89		R77	717.49	3 241 403.88
L78	- 183.61	3 241 651.96		R78	538.30	3 241 459.94
L79	- 280.26	3 241 682.43		R79	517.41	3 241 468.45
L80	- 375.88	3 241 711.68		R80	492.67	3 241 474.18
L81	- 471.20	3 241 741.89		R81	397.23	3 241 504.01
L82	- 566.73	3 241 771.49		R82	206.36	3 241 563.64
L83	- 617.48	3 241 787.65		R83	177.88	3 241 574.78
L84	- 662.04	3 241 801.77		R84	110.91	3 241 593.39
L85	- 757.66	3 241 830.90		R85	-1 320.79	3 242 039.89
L86	-1 043.81	3 241 920.65		R86	-1 476.35	3 242 088.58
L87	-1 425.67	3 242 039.47		R87	-1 507.68	3 242 098.21
L88	-1 807.40	3 242 158.81		R88	-1 732.82	3 242 168.52
L89	-1 902.89	3 242 188.42		R89	-1 746.88	3 242 174.97
L90	-1 932.20	3 242 197.67		R90	-1 797.81	3 242 190.54
L91	-1 945.69	3 242 201.80		R91	-1 819.63	3 242 199.32
L92	-1 998.29	3 242 218.36		R92	-1 849.62	3 242 204.95
L93	-2 666.33	3 242 426.47		R93	-1 948.60	3 242 235.94
L94	-2 761.79	3 242 456.30		R94	-1 955.03	3 242 237.75
L95	-2 857.16	3 242 486.30		R95	-1 988.87	3 242 248.58
L96	-3 047.44	3 242 545.24		R96	-3 038.69	3 242 575.99
L97	-3 048.23	3 242 545.49		R97	-3 090.75	3 242 592.14
L98	-3 125.54	3 242 569.96		R98	-3 130.51	3 242 604.47
L99	-3 620.56	3 242 724.60		R99	-3 325.02	3 242 665.25
L100	-3 749.92	3 242 765.17		R100	-3 420.53	3 242 694.76
L101	-3 906.84	3 242 814.13		R101	-4 374.61	3 242 992.57
L102	-3 991.26	3 242 840.32		R102	-4 470.10	3 243 022.23
				Vel Sheet	24 Van of	38 P1246/24

PADRESERWE KOÖRDINATE / ROAD RESERVE CO-ORDINATES									
LINKERKANT/LEFT HAND SIDE					REGTERKANT/RIGHT HAND SIDE				
	Y	X	WG 17°			Y	X		
L103	-4 008.12	3 242 842.43		R103	-5 261.15	3 243 269.18			
L104	-4 074.15	3 242 864.08		R104	-5 520.06	3 243 350.01			
L105	-4 097.65	3 242 873.49		R105	-5 806.52	3 243 439.03			
L106	-4 383.98	3 242 962.47		R106	-6 092.92	3 243 528.36			
L107	-4 479.92	3 242 992.54		R107	-6 333.23	3 243 603.45			
L108	-4 496.31	3 242 997.50		R108	-6 437.26	3 243 635.43			
L109	-5 360.02	3 243 266.91		R109	-6 468.18	3 243 647.70			
L110	-5 434.03	3 243 289.99		R110	-6 504.20	3 243 656.77			
L111	-5 529.44	3 243 319.87		R111	-6 546.34	3 243 669.84			
L112	-5 911.38	3 243 438.78		R112	-6 582.51	3 243 682.87			
L113	-6 102.25	3 243 498.42		R113	-6 665.71	3 243 706.99			
L114	-6 341.36	3 243 572.83		R114	-6 856.53	3 243 766.76			
L115	-6 361.33	3 243 579.26		R115	-7 524.81	3 243 974.97			
L116	-6 484.27	3 243 616.98		R116	-7 906.49	3 244 094.40			
L117	-6 503.62	3 243 621.14		R117	-8 264.69	3 244 206.19			
L118	-6 515.69	3 243 626.95		R118	-8 342.29	3 244 230.53			
L119	-6 675.03	3 243 677.03		R119	-8 361.11	3 244 238.13			
L120	-7 343.21	3 243 885.58		R120	-8 459.08	3 244 267.52			
L121	-7 820.55	3 244 034.22		R121	-8 479.51	3 244 269.37			
L122	-7 916.01	3 244 063.85		R122	-8 576.22	3 244 284.70			
L123	-8 011.45	3 244 093.72		R123	-8 674.06	3 244 290.70			
L124	-8 276.05	3 244 176.34		R124	-8 772.03	3 244 287.35			
L125	-8 297.84	3 244 182.98		R125	-8 865.52	3 244 274.98			
L126	-8 394.70	3 244 213.28		R126	-8 869.11	3 244 274.50			
L127	-8 486.83	3 244 237.16		R127	-8 964.40	3 244 252.32			
L128	-8 579.04	3 244 249.80		R128	-8 983.72	3 244 245.74			
L129	-8 672.80	3 244 256.64		R129	-9 057.05	3 244 220.27			
L130	-8 767.07	3 244 254.80		R130	-9 072.41	3 244 214.06			
L131	-8 859.63	3 244 241.45		R131	-9 147.70	3 244 183.18			
L132	-8 867.16	3 244 239.78		R132	-9 198.81	3 244 164.59			
L133	-8 877.21	3 244 237.55		R133	-9 240.50	3 244 146.29			
L134	-8 955.42	3 244 220.92		R134	-9 263.32	3 244 140.29			
L135	-8 972.73	3 244 215.00		R135	-9 311.31	3 244 121.11			
L136	-9 043.91	3 244 191.23		R136	-9 339.25	3 244 104.68			
L137	-9 251.33	3 244 106.19		R137	-9 731.10	3 243 944.19			
L138	-9 345.35	3 244 067.87		R138	-9 863.99	3 243 899.81			
L139	-9 657.28	3 243 939.89		R139	-9 997.29	3 243 856.47			
L140	-9 689.89	3 243 923.80		R140	-10 134.55	3 243 827.01			
L141	-9 742.88	3 243 902.16		R141	-10 239.56	3 243 811.22			
L142	-9 802.01	3 243 881.62		R142	-11 183.48	3 243 694.29			
L143	-9 821.08	3 243 873.34		R143	-11 196.14	3 243 694.41			
L144	-9 856.85	3 243 862.18		R144	-11 270.42	3 243 685.11			
L145	-9 877.43	3 243 851.71		R145	-11 295.08	3 243 680.44			
L146	-9 904.45	3 243 849.19		R146	-12 089.03	3 243 582.41			
L147	-9 988.96	3 243 824.80		R147	-12 188.26	3 243 569.99			
L148	-10 127.46	3 243 794.88		R148	-12 287.53	3 243 557.83			
L149	-10 199.60	3 243 784.49		R149	-12 783.74	3 243 496.43			
L150	-10 235.31	3 243 779.55		R150	-12 857.44	3 243 487.17			
L151	-10 298.77	3 243 771.46		R151	-12 886.85	3 243 485.62			
L152	-10 398.00	3 243 759.36		R152	-12 939.15	3 243 479.19			
L153	-11 177.81	3 243 662.85		R153	-13 001.02	3 243 469.99			
					Vel Sheet	25	Van of	38	P1246/24

PADRESERWE KOÖRDINATE / ROAD RESERVE CO-ORDINATES						
LINKERKANT/LEFT HAND SIDE				REGTERKANT/RIGHT HAND SIDE		
	Y	X	WG 17°		Y	X
L154	-11 192.60	3 243 659.74		R154	-13 060.02	3 243 465.11
L155	-11 266.49	3 243 651.80		R155	-13 080.94	3 243 460.31
L156	-12 464.07	3 243 503.59		R156	-13 125.81	3 243 455.23
L157	-12 581.32	3 243 489.10		R157	-13 152.84	3 243 449.55
L158	-12 855.06	3 243 455.05		R158	-13 205.64	3 243 447.01
L159	-12 902.78	3 243 447.18		R159	-13 279.86	3 243 434.95
L160	-12 928.28	3 243 445.27		R160	-13 477.27	3 243 410.23
L161	-13 051.40	3 243 428.21		R161	-13 776.03	3 243 373.70
L162	-13 074.92	3 243 426.37		R162	-13 875.25	3 243 361.25
L163	-13 112.75	3 243 420.69		R163	-13 974.49	3 243 348.99
L164	-13 161.06	3 243 416.32		R164	-14 073.75	3 243 336.70
L165	-13 202.32	3 243 409.59		R165	-14 172.99	3 243 324.48
L166	-13 275.91	3 243 402.63		R166	-14 371.52	3 243 300.19
L167	-13 375.14	3 243 390.70		R167	-14 470.76	3 243 288.00
L168	-13 573.61	3 243 366.16		R168	-14 768.41	3 243 250.74
L169	-13 579.55	3 243 365.54		R169	-14 975.82	3 243 225.02
L170	-13 672.82	3 243 353.70		R170	-15 106.77	3 243 210.45
L171	-13 871.23	3 243 328.72		R171	-15 210.89	3 243 198.87
L172	-14 069.74	3 243 304.41		R172	-15 265.70	3 243 194.03
L173	-14 136.09	3 243 296.33		R173	-15 314.52	3 243 185.18
L174	-14 168.97	3 243 292.04		R174	-15 337.61	3 243 183.78
L175	-14 268.25	3 243 279.95		R175	-15 364.07	3 243 179.09
L176	-14 530.26	3 243 247.81		R176	-15 531.95	3 243 156.20
L177	-14 580.48	3 243 238.69		R177	-15 860.00	3 243 115.52
L178	-14 764.41	3 243 218.19		R178	-15 959.41	3 243 104.44
L179	-14 827.45	3 243 211.27		R179	-16 058.49	3 243 091.00
L180	-14 962.97	3 243 194.39		R180	-16 207.94	3 243 076.34
L181	-15 210.84	3 243 163.84		R181	-16 229.10	3 243 071.71
L182	-15 240.55	3 243 156.57		R182	-16 376.85	3 243 054.38
L183	-15 285.59	3 243 151.53		R183	-16 409.64	3 243 047.53
L184	-15 359.93	3 243 145.44		R184	-16 441.23	3 243 043.67
L185	-15 558.35	3 243 120.72		R185	-16 694.05	3 243 015.08
L186	-15 963.95	3 243 070.56		R186	-16 753.69	3 243 005.66
L187	-16 090.20	3 243 054.94		R187	-16 796.52	3 243 001.66
L188	-16 116.24	3 243 048.11		R188	-16 854.20	3 242 991.46
L189	-16 181.78	3 243 039.30		R189	-16 895.50	3 242 980.53
L190	-16 196.17	3 243 038.53		R190	-16 951.76	3 242 969.31
L191	-16 401.56	3 243 012.70		R191	-16 972.46	3 242 964.86
L192	-16 414.81	3 243 014.74		R192	-17 020.03	3 242 952.66
L193	-16 689.51	3 242 980.66		R193	-17 032.39	3 242 947.55
L194	-16 747.65	3 242 970.86		R194	-17 037.46	3 242 945.46
L195	-16 772.12	3 242 964.59		R195	-17 049.95	3 242 940.30
L196	-16 827.45	3 242 955.70		R196	-17 071.98	3 242 935.72
L197	-16 845.22	3 242 953.56		R197	-17 093.16	3 242 925.99
L198	-16 877.16	3 242 946.86		R198	-17 158.61	3 242 913.10
L199	-16 895.67	3 242 939.65		R199	-17 178.35	3 242 902.22
L200	-16 942.22	3 242 930.03		R200	-17 239.43	3 242 880.80
L201	-16 960.05	3 242 929.56		R201	-17 369.71	3 242 835.20
L202	-17 025.97	3 242 909.39		R202	-17 618.18	3 242 752.20
L203	-17 031.16	3 242 907.80		R203	-17 637.70	3 242 745.56
L204	-17 039.48	3 242 905.25		R204	-17 957.62	3 242 639.59
				Vel Sheet	26 Van of	38 P1246/24

PADRESERVE KOÖRDINATE / ROAD RESERVE CO-ORDINATES									
LINKERKANT/LEFT HAND SIDE					REGTERKANT/RIGHT HAND SIDE				
	Y	X	WG 17°			Y	X		
L205	-17 090.71	3 242 889.75		R205	-18 000.22	3 242 630.02			
L206	-17 384.45	3 242 796.51		R206	-18 028.10	3 242 617.31			
L207	-17 608.11	3 242 721.95		R207	-18 069.29	3 242 604.45			
L208	-17 628.43	3 242 715.30		R208	-18 092.61	3 242 594.48			
L209	-17 702.96	3 242 690.30		R209	-18 343.82	3 242 510.95			
L210	-17 797.86	3 242 658.78		R210	-18 435.64	3 242 489.24			
L211	-17 892.76	3 242 627.30		R211	-18 450.06	3 242 487.28			
L212	-17 974.02	3 242 596.17		R212	-18 473.47	3 242 480.04			
L213	-17 986.57	3 242 590.69		R213	-18 533.20	3 242 465.19			
L214	-18 007.81	3 242 585.96		R214	-18 569.59	3 242 456.94			
L215	-18 054.81	3 242 569.77		R215	-18 605.19	3 242 452.35			
L216	-18 082.06	3 242 562.71		R216	-18 673.50	3 242 443.56			
L217	-18 157.87	3 242 539.33		R217	-18 779.14	3 242 437.24			
L218	-18 333.36	3 242 480.99		R218	-18 818.24	3 242 437.96			
L219	-18 368.45	3 242 469.96		R219	-18 840.80	3 242 436.13			
L220	-18 436.15	3 242 449.07		R220	-18 867.51	3 242 438.23			
L221	-18 469.85	3 242 437.37		R221	-18 889.48	3 242 435.65			
L222	-18 554.22	3 242 421.68		R222	-18 911.72	3 242 436.55			
L223	-18 593.33	3 242 414.21		R223	-18 966.45	3 242 433.50			
L224	-18 673.51	3 242 408.64		R224	-18 974.63	3 242 431.66			
L225	-18 741.15	3 242 400.88		R225	-19 090.11	3 242 433.63			
L226	-18 785.11	3 242 401.62		R226	-19 341.55	3 242 423.03			
L227	-18 839.82	3 242 399.35		R227	-19 621.31	3 242 416.76			
L228	-18 866.01	3 242 400.14		R228	-19 683.81	3 242 420.98			
L229	-18 910.74	3 242 396.82		R229	-19 701.19	3 242 423.74			
L230	-18 965.89	3 242 397.65		R230	-19 741.97	3 242 418.72			
L231	-18 983.99	3 242 399.13		R231	-19 835.86	3 242 416.38			
L232	-19 065.90	3 242 397.17		R232	-19 859.63	3 242 416.79			
L233	-19 341.12	3 242 391.12		R233	-19 879.20	3 242 414.37			
L234	-19 365.79	3 242 388.16		R234	-19 923.35	3 242 413.69			
L235	-19 477.46	3 242 376.77		R235	-19 937.63	3 242 415.69			
L236	-19 765.74	3 242 378.82		R236	-19 999.59	3 242 412.49			
L237	-19 826.09	3 242 376.13		R237	-20 182.32	3 242 409.35			
L238	-19 861.78	3 242 377.53		R238	-20 336.29	3 242 408.34			
L239	-19 889.27	3 242 377.25		R239	-20 461.97	3 242 398.42			
L240	-19 914.34	3 242 378.34		R240	-20 933.85	3 242 387.76			
L241	-20 180.53	3 242 372.60		R241	-21 073.63	3 242 381.37			
L242	-20 265.53	3 242 367.56		R242	-21 167.10	3 242 370.74			
L243	-20 317.60	3 242 364.68		R243	-21 212.90	3 242 365.44			
L244	-20 365.50	3 242 365.10		R244	-21 266.63	3 242 356.09			
L245	-20 460.30	3 242 366.38		R245	-21 350.83	3 242 341.26			
L246	-20 932.30	3 242 355.87		R246	-21 463.42	3 242 314.28			
L247	-21 071.16	3 242 348.49		R247	-21 487.17	3 242 308.43			
L248	-21 144.93	3 242 340.12		R248	-21 987.45	3 242 156.62			
L249	-21 167.29	3 242 335.99		R249	-22 040.18	3 242 142.61			
L250	-21 285.21	3 242 318.80		R250	-22 066.02	3 242 133.98			
L251	-21 342.80	3 242 309.24		R251	-22 083.85	3 242 131.91			
L252	-21 477.88	3 242 277.10		R252	-22 158.99	3 242 108.74			
L253	-21 550.22	3 242 254.97		R253	-22 169.44	3 242 101.11			
L254	-22 017.04	3 242 113.47		R254	-22 420.81	3 242 024.40			
L255	-22 028.64	3 242 108.17		R255	-22 444.83	3 242 019.00			
					Vel Sheet	27	Van of	38	P1246/24

PADRESERWE KOÖRDINATE / ROAD RESERVE CO-ORDINATES						
LINKERKANT/LEFT HAND SIDE				REGTERKANT/RIGHT HAND SIDE		
	Y	X	WG 17°		Y	X
L256	-22 102.53	3 242	085.95	R256	-22 516.57	3 241 997.48
L257	-22 124.43	3 242	080.93	R257	-22 580.46	3 241 975.68
L258	-22 220.13	3 242	051.88	R258	-22 624.29	3 241 966.38
L259	-22 269.39	3 242	034.68	R259	-22 655.75	3 241 954.40
L260	-22 293.61	3 242	029.62	R260	-22 750.32	3 241 925.86
L261	-22 507.11	3 241	964.57	R261	-22 843.65	3 241 895.67
L262	-22 561.25	3 241	947.88	R262	-22 923.56	3 241 872.95
L263	-22 576.96	3 241	939.58	R263	-22 983.55	3 241 854.27
L264	-22 766.64	3 241	883.81	R264	-23 208.69	3 241 798.27
L265	-22 793.83	3 241	876.34	R265	-23 289.46	3 241 785.69
L266	-22 889.77	3 241	847.74	R266	-23 308.97	3 241 780.86
L267	-22 986.11	3 241	818.78	R267	-23 383.90	3 241 769.92
L268	-23 004.16	3 241	813.41	R268	-23 405.98	3 241 769.44
L269	-23 016.87	3 241	810.27	R269	-23 460.41	3 241 758.70
L270	-23 034.01	3 241	804.49	R270	-23 482.46	3 241 756.55
L271	-23 082.74	3 241	791.99	R271	-23 548.17	3 241 755.81
L272	-23 109.07	3 241	787.54	R272	-23 710.56	3 241 738.08
L273	-23 152.43	3 241	776.91	R273	-23 866.49	3 241 727.43
L274	-23 181.54	3 241	771.23	R274	-24 055.72	3 241 712.60
L275	-23 233.40	3 241	760.12	R275	-24 080.16	3 241 705.66
L276	-23 329.87	3 241	742.95	R276	-24 228.84	3 241 693.16
L277	-23 455.23	3 241	726.24	R277	-24 268.22	3 241 693.14
L278	-23 525.59	3 241	712.15	R278	-24 306.19	3 241 686.74
L279	-23 678.55	3 241	702.86	R279	-24 379.08	3 241 680.68
L280	-23 778.16	3 241	694.10	R280	-24 423.16	3 241 678.53
L281	-23 832.62	3 241	689.21	R281	-24 478.69	3 241 672.36
L282	-23 977.42	3 241	677.06	R282	-24 727.03	3 241 651.53
L283	-24 077.07	3 241	668.89	R283	-24 778.10	3 241 651.27
L284	-24 239.76	3 241	659.11	R284	-24 826.18	3 241 647.68
L285	-24 268.67	3 241	655.22	R285	-24 884.85	3 241 640.57
L286	-24 301.90	3 241	655.09	R286	-24 919.11	3 241 638.54
L287	-24 363.86	3 241	649.89	R287	-24 946.47	3 241 635.16
L288	-24 383.24	3 241	646.57	R288	-25 017.25	3 241 622.55
L289	-24 724.89	3 241	619.75	R289	-25 040.41	3 241 616.37
L290	-24 842.45	3 241	607.07	R290	-25 083.17	3 241 607.91
L291	-24 875.32	3 241	599.60	R291	-25 258.16	3 241 572.45
L292	-24 896.93	3 241	600.02	R292	-25 446.60	3 241 530.83
L293	-24 927.74	3 241	594.65	R293	-25 459.11	3 241 529.08
L294	-24 951.18	3 241	593.18	R294	-25 489.56	3 241 521.39
L295	-24 972.02	3 241	588.63	R295	-25 523.04	3 241 513.26
L296	-25 010.18	3 241	584.37	R296	-25 559.73	3 241 508.17
L297	-25 077.22	3 241	574.23	R297	-25 617.26	3 241 490.42
L298	-25 252.65	3 241	539.56	R298	-25 677.86	3 241 478.69
L299	-25 312.31	3 241	524.21	R299	-25 760.24	3 241 455.33
L300	-25 421.59	3 241	493.40	R300	-25 869.38	3 241 427.91
L301	-25 460.75	3 241	485.20	R301	-25 880.04	3 241 426.86
L302	-25 481.50	3 241	478.67	R302	-25 893.50	3 241 421.82
L303	-25 505.36	3 241	474.75	R303	-25 954.18	3 241 406.50
L304	-25 550.88	3 241	461.01	R304	-25 986.15	3 241 400.39
L305	-25 607.27	3 241	448.01	R305	-26 072.44	3 241 379.70
L306	-25 720.53	3 241	425.12	R306	-26 100.62	3 241 370.95
				Vel Sheet	28 Van of 38	P1246/24

PADRESERWE KOÖRDINATE / ROAD RESERVE CO-ORDINATES						
LINKERKANT/LEFT HAND SIDE				REGTERKANT/RIGHT HAND SIDE		
	Y	X	WG 17°		Y	X
L307	-25 799.61	3 241	406.04	R307	-26 148.56	3 241 359.43
L308	-25 828.56	3 241	396.53	R308	-26 197.91	3 241 349.98
L309	-25 855.80	3 241	393.34	R309	-26 217.07	3 241 343.35
L310	-25 945.87	3 241	371.86	R310	-26 274.82	3 241 331.86
L311	-25 972.31	3 241	364.61	R311	-26 326.55	3 241 317.74
L312	-26 062.60	3 241	341.96	R312	-26 392.75	3 241 303.08
L313	-26 119.59	3 241	332.24	R313	-26 440.21	3 241 289.10
L314	-26 151.96	3 241	324.66	R314	-26 615.68	3 241 246.38
L315	-26 170.25	3 241	317.64	R315	-26 766.31	3 241 214.28
L316	-26 529.62	3 241	233.10	R316	-26 917.86	3 241 190.70
L317	-26 598.91	3 241	217.06	R317	-27 026.93	3 241 179.22
L318	-26 725.84	3 241	189.34	R318	-27 126.23	3 241 171.87
L319	-26 760.39	3 241	182.06	R319	-27 226.41	3 241 166.54
L320	-26 824.92	3 241	171.91	R320	-27 550.34	3 241 153.83
L321	-26 913.95	3 241	158.13	R321	-27 725.57	3 241 146.96
L322	-27 010.04	3 241	147.37	R322	-27 825.48	3 241 142.83
L323	-27 032.38	3 241	143.80	R323	-28 025.33	3 241 135.17
L324	-27 093.00	3 241	138.23	R324	-28 101.84	3 241 133.59
L325	-27 154.35	3 241	135.17	R325	-28 171.97	3 241 130.85
L326	-27 244.02	3 241	131.18	R326	-28 225.15	3 241 127.20
L327	-27 324.63	3 241	130.82	R327	-28 325.09	3 241 123.31
L328	-27 501.49	3 241	123.91	R328	-28 425.31	3 241 118.95
L329	-27 524.21	3 241	122.99	R329	-28 435.04	3 241 119.03
L330	-27 624.38	3 241	118.93	R330	-28 992.31	3 241 097.17
L331	-27 724.32	3 241	115.05	R331	-29 024.51	3 241 096.30
L332	-27 925.02	3 241	106.29	R332	-29 073.83	3 241 095.65
L333	-27 974.31	3 241	103.17	R333	-29 101.62	3 241 097.33
L334	-27 997.81	3 241	103.31	R334	-29 116.86	3 241 096.60
L335	-28 187.61	3 241	093.84	R335	-29 150.61	3 241 099.98
L336	-28 246.58	3 241	093.25	R336	-29 206.08	3 241 098.03
L337	-28 274.14	3 241	091.28	R337	-29 244.82	3 241 092.15
L338	-28 314.52	3 241	091.02	R338	-29 326.87	3 241 084.10
L339	-28 373.57	3 241	085.29	R339	-29 354.90	3 241 079.86
L340	-28 424.07	3 241	087.46	R340	-30 123.53	3 241 049.88
L341	-28 909.50	3 241	068.51	R341	-30 323.35	3 241 042.13
L342	-28 916.69	3 241	067.00	R342	-30 348.27	3 241 044.04
L343	-28 982.74	3 241	064.67	R343	-30 394.84	3 241 043.04
L344	-29 023.18	3 241	061.00	R344	-30 623.31	3 241 033.25
L345	-29 027.04	3 241	060.79	R345	-30 641.75	3 241 029.59
L346	-30 434.79	3 241	005.78	R346	-30 734.51	3 241 025.93
L347	-30 721.66	3 240	994.36	R347	-30 786.17	3 241 029.56
L348	-30 732.89	3 240	994.05	R348	-30 956.56	3 241 023.32
L349	-30 821.54	3 240	989.02	R349	-30 993.33	3 241 020.63
L350	-30 872.23	3 240	985.94	R350	-31 022.59	3 241 021.36
L351	-30 921.42	3 240	984.56	R351	-31 101.64	3 241 014.49
L352	-31 020.51	3 240	980.46	R352	-31 127.56	3 241 016.60
L353	-31 033.61	3 240	981.61	R353	-31 147.10	3 241 014.86
L354	-31 072.68	3 240	980.64	R354	-31 173.77	3 241 016.51
L355	-31 321.09	3 240	970.69	R355	-31 218.86	3 241 012.86
L356	-31 420.97	3 240	966.74	R356	-31 245.44	3 241 012.60
L357	-31 447.15	3 240	965.81	R357	-31 284.57	3 241 009.55
				Vel Sheet	29 Van of 38	P1246/24

PADRESERWE KOÖRDINATE / ROAD RESERVE CO-ORDINATES						
LINKERKANT/LEFT HAND SIDE				REGTERKANT/RIGHT HAND SIDE		
	Y	X	WG 17°		Y	X
L358	-31 493.01	3 240	964.17	R358	-31 372.96	3 241 007.20
L359	-31 611.62	3 240	955.66	R359	-31 403.64	3 241 005.89
L360	-31 730.70	3 240	943.58	R360	-31 441.88	3 241 004.27
L361	-31 817.60	3 240	932.85	R361	-31 476.64	3 240 999.78
L362	-31 959.77	3 240	915.67	R362	-31 522.43	3 240 999.90
L363	-32 016.19	3 240	909.58	R363	-31 619.55	3 240 994.94
L364	-32 186.56	3 240	891.14	R364	-31 694.26	3 240 987.48
L365	-32 603.00	3 240	841.72	R365	-31 719.32	3 240 982.97
L366	-32 643.73	3 240	839.97	R366	-31 747.46	3 240 980.93
L367	-32 711.16	3 240	831.48	R367	-31 765.17	3 240 976.04
L368	-32 751.24	3 240	824.07	R368	-31 921.26	3 240 957.78
L369	-32 810.29	3 240	816.81	R369	-31 946.26	3 240 957.97
L370	-32 863.56	3 240	809.64	R370	-32 004.46	3 240 952.60
L371	-32 909.51	3 240	803.89	R371	-32 081.67	3 240 940.48
L372	-33 008.75	3 240	791.84	R372	-32 119.67	3 240 936.62
L373	-33 061.45	3 240	786.24	R373	-32 136.17	3 240 932.48
L374	-33 098.46	3 240	780.58	R374	-32 289.06	3 240 914.32
L375	-33 124.49	3 240	779.54	R375	-32 316.63	3 240 913.87
L376	-33 183.36	3 240	773.25	R376	-32 405.03	3 240 903.55
L377	-33 197.23	3 240	771.80	R377	-32 413.38	3 240 900.18
L378	-33 306.69	3 240	756.96	R378	-32 432.45	3 240 898.78
L379	-33 417.85	3 240	748.02	R379	-32 447.49	3 240 893.41
L380	-33 429.83	3 240	743.94	R380	-32 508.66	3 240 885.09
L381	-33 456.02	3 240	741.88	R381	-32 615.56	3 240 872.40
L382	-33 482.18	3 240	740.38	R382	-32 690.42	3 240 866.09
L383	-33 539.41	3 240	733.58	R383	-32 752.38	3 240 859.29
L384	-33 629.16	3 240	722.92	R384	-32 776.44	3 240 861.21
L385	-33 655.38	3 240	712.81	R385	-32 859.73	3 240 847.64
L386	-33 677.34	3 240	717.20	R386	-32 914.09	3 240 842.86
L387	-33 734.15	3 240	710.45	R387	-33 060.69	3 240 827.42
L388	-33 752.32	3 240	704.02	R388	-33 079.65	3 240 828.73
L389	-33 779.41	3 240	703.25	R389	-33 139.46	3 240 814.98
L390	-33 800.35	3 240	699.73	R390	-33 189.62	3 240 807.36
L391	-33 881.02	3 240	693.63	R391	-33 237.03	3 240 802.93
L392	-34 041.28	3 240	665.21	R392	-33 267.23	3 240 796.73
L393	-34 070.23	3 240	661.66	R393	-33 304.05	3 240 795.29
L394	-34 123.85	3 240	656.51	R394	-33 424.28	3 240 783.11
L395	-34 175.67	3 240	654.51	R395	-33 453.00	3 240 775.25
L396	-34 272.04	3 240	646.57	R396	-33 577.78	3 240 761.33
L397	-34 324.63	3 240	640.32	R397	-33 608.88	3 240 757.86
L398	-34 371.47	3 240	631.79	R398	-33 642.84	3 240 758.04
L399	-34 498.23	3 240	616.24	R399	-33 673.94	3 240 750.29
L400	-34 597.32	3 240	604.35	R400	-33 725.27	3 240 744.35
L401	-34 696.26	3 240	592.96	R401	-33 754.44	3 240 744.71
L402	-34 796.07	3 240	581.27	R402	-33 812.67	3 240 737.13
L403	-34 808.86	3 240	579.84	R403	-33 833.38	3 240 730.89
L404	-34 893.31	3 240	566.36	R404	-34 048.42	3 240 716.50
L405	-34 978.99	3 240	562.60	R405	-34 100.82	3 240 709.72
L406	-35 115.82	3 240	546.35	R406	-34 153.54	3 240 698.23
L407	-35 156.02	3 240	538.31	R407	-34 178.60	3 240 695.43
L408	-35 248.58	3 240	530.35	R408	-34 304.08	3 240 676.41
				Vel Sheet	30 Van of	38 P1246/24

PADRESERWE KOÖRDINATE / ROAD RESERVE CO-ORDINATES									
LINKERKANT/LEFT HAND SIDE					REGTERKANT/RIGHT HAND SIDE				
	Y	X	WG 17°			Y	X		
L409	-35 318.96	3 240	517.47		R409	-34 502.52	3 240	652.19	
L410	-35 403.74	3 240	505.14		R410	-34 526.01	3 240	651.59	
L411	-35 598.10	3 240	470.08		R411	-34 573.44	3 240	644.63	
L412	-35 683.61	3 240	450.40		R412	-34 630.50	3 240	638.63	
L413	-35 831.87	3 240	416.54		R413	-34 648.64	3 240	634.18	
L414	-35 874.35	3 240	407.50		R414	-34 799.81	3 240	613.18	
L415	-35 878.72	3 240	406.44		R415	-34 855.36	3 240	616.79	
L416	-36 381.54	3 240	300.37		R416	-34 901.86	3 240	615.92	
L417	-36 396.98	3 240	296.57		R417	-34 947.58	3 240	605.14	
L418	-36 563.32	3 240	260.67		R418	-34 960.02	3 240	599.17	
L419	-36 661.07	3 240	239.30		R419	-34 999.06	3 240	595.73	
L420	-36 856.52	3 240	197.06		R420	-35 050.22	3 240	586.58	
L421	-37 247.39	3 240	112.06		R421	-35 134.46	3 240	577.76	
L422	-38 275.24	3 239	889.04		R422	-35 175.76	3 240	575.99	
L423	-38 322.01	3 239	877.53		R423	-35 197.45	3 240	570.35	
L424	-38 419.50	3 239	855.48		R424	-35 272.13	3 240	559.48	
L425	-38 462.38	3 239	846.51		R425	-35 296.89	3 240	558.47	
L426	-38 464.90	3 239	845.99		R426	-35 428.36	3 240	537.97	
L427	-38 634.62	3 239	811.28		R427	-35 484.21	3 240	527.34	
L428	-38 711.26	3 239	791.55		R428	-35 521.86	3 240	521.83	
L429	-38 742.93	3 239	783.54		R429	-35 543.25	3 240	516.17	
L430	-38 844.31	3 239	749.47		R430	-35 647.57	3 240	496.14	
L431	-38 945.01	3 239	707.18		R431	-35 663.08	3 240	491.04	
L432	-38 986.11	3 239	685.95		R432	-35 706.25	3 240	481.69	
L433	-39 041.71	3 239	657.52		R433	-35 737.66	3 240	476.97	
L434	-39 156.57	3 239	585.86		R434	-35 777.45	3 240	467.97	
L435	-39 167.39	3 239	579.23		R435	-35 816.19	3 240	462.24	
L436	-39 895.67	3 239	072.40		R436	-35 874.94	3 240	450.04	
L437	-40 596.75	3 238	584.86		R437	-35 985.07	3 240	424.96	
L438	-40 697.40	3 238	518.93		R438	-36 172.91	3 240	385.02	
L439	-40 786.03	3 238	470.54		R439	-36 224.39	3 240	375.32	
L440	-40 811.99	3 238	458.48		R440	-36 251.38	3 240	366.62	
L441	-40 904.73	3 238	417.59		R441	-36 326.65	3 240	347.27	
L442	-40 959.01	3 238	395.47		R442	-36 497.41	3 240	310.38	
L443	-41 094.01	3 238	355.53		R443	-36 521.72	3 240	307.99	
L444	-41 202.35	3 238	332.13		R444	-36 570.29	3 240	292.54	
L445	-41 339.26	3 238	314.24		R445	-37 222.30	3 240	153.62	
L446	-41 695.33	3 238	284.27		R446	-37 230.62	3 240	154.86	
L447	-41 818.36	3 238	274.04		R447	-37 276.13	3 240	147.23	
L448	-41 957.07	3 238	262.20		R448	-37 368.70	3 240	125.54	
L449	-41 986.30	3 238	260.02		R449	-37 452.67	3 240	104.72	
L450	-42 492.44	3 238	216.79		R450	-37 471.96	3 240	101.99	
L451	-43 887.32	3 238	097.90		R451	-37 491.36	3 240	096.10	
L452	-44 385.50	3 238	055.68		R452	-37 577.26	3 240	078.67	
L453	-44 584.80	3 238	039.16		R453	-37 598.27	3 240	075.37	
L454	-44 684.45	3 238	030.71		R454	-37 665.16	3 240	061.09	
L455	-44 785.21	3 238	022.36		R455	-37 705.66	3 240	051.25	
L456	-44 881.66	3 238	014.37		R456	-37 964.95	3 239	993.44	
L457	-44 893.49	3 238	013.76		R457	-37 982.93	3 239	988.39	
L458	-44 984.45	3 238	014.26		R458	-38 085.92	3 239	966.08	
L459	-45 074.05	3 238	023.53		R459	-38 133.77	3 239	953.30	
					Vel Sheet	31	Van of	38	P1246/24

PADRESERWE KOÖRDINATE / ROAD RESERVE CO-ORDINATES						
LINKERKANT/LEFT HAND SIDE				REGTERKANT/RIGHT HAND SIDE		
	Y	X	WG 17°		Y	X
L460	-45 089.32	3 238 026.42		R460	-38 231.68	3 239 932.86
L461	-45 162.78	3 238 040.91		R461	-38 313.25	3 239 916.82
L462	-45 189.04	3 238 048.29		R462	-38 354.49	3 239 909.63
L463	-45 249.63	3 238 065.97		R463	-38 375.97	3 239 903.74
L464	-45 285.37	3 238 079.71		R464	-38 404.38	3 239 899.20
L465	-45 312.38	3 238 090.34		R465	-38 423.90	3 239 892.85
L466	-45 655.34	3 238 231.94		R466	-38 462.28	3 239 883.70
L467	-45 668.66	3 238 237.13		R467	-38 464.79	3 239 883.10
L468	-45 840.70	3 238 308.65		R468	-38 518.55	3 239 871.18
L469	-46 955.77	3 238 768.43		R469	-38 559.45	3 239 864.73
L470	-47 119.25	3 238 836.15		R470	-38 619.60	3 239 849.69
L471	-47 143.81	3 238 845.16		R471	-38 738.39	3 239 825.00
L472	-47 189.17	3 238 861.80		R472	-38 816.63	3 239 793.61
L473	-47 262.56	3 238 880.51		R473	-38 856.41	3 239 779.80
L474	-47 337.09	3 238 892.76		R474	-38 959.29	3 239 736.64
L475	-47 371.16	3 238 896.83		R475	-38 979.33	3 239 726.35
L476	-47 424.41	3 238 896.40		R476	-39 001.77	3 239 721.21
L477	-47 431.39	3 238 896.35		R477	-39 051.24	3 239 694.97
L478	-47 445.14	3 238 893.93		R478	-39 071.70	3 239 680.95
L479	-47 462.43	3 238 894.64		R479	-39 099.47	3 239 668.25
L480	-47 541.93	3 238 885.00		R480	-39 158.66	3 239 629.65
L481	-47 619.17	3 238 866.43		R481	-39 180.00	3 239 617.97
L482	-47 688.88	3 238 840.98		R482	-39 247.87	3 239 568.47
L483	-47 727.01	3 238 823.60		R483	-39 362.04	3 239 489.91
L484	-47 747.17	3 238 811.81		R484	-39 384.37	3 239 476.44
L485	-47 766.38	3 238 806.18		R485	-39 399.94	3 239 461.49
L486	-47 815.75	3 238 782.73		R486	-39 423.46	3 239 443.95
L487	-47 843.89	3 238 774.74		R487	-39 431.76	3 239 434.54
L488	-48 151.35	3 238 642.13		R488	-39 585.55	3 239 327.00
L489	-48 178.71	3 238 628.55		R489	-39 772.45	3 239 198.04
L490	-48 199.87	3 238 621.20		R490	-39 801.42	3 239 183.07
L491	-48 437.84	3 238 518.56		R491	-39 864.51	3 239 139.25
L492	-48 506.64	3 238 483.78		R492	-39 881.72	3 239 122.79
L493	-48 629.22	3 238 432.38		R493	-40 188.68	3 238 915.74
L494	-49 079.42	3 238 237.82		R494	-40 449.47	3 238 726.62
L495	-49 191.99	3 238 194.87		R495	-40 615.88	3 238 613.76
L496	-49 307.49	3 238 159.12		R496	-40 654.31	3 238 588.98
L497	-49 432.26	3 238 130.75		R497	-40 715.14	3 238 549.74
L498	-49 448.95	3 238 127.44		R498	-40 789.46	3 238 510.75
L499	-49 753.31	3 238 075.51		R499	-40 845.51	3 238 481.78
L500	-49 754.04	3 238 075.39		R500	-40 965.04	3 238 432.66
L501	-49 795.47	3 238 068.69		R501	-41 088.39	3 238 394.13
L502	-50 156.84	3 238 007.01		R502	-41 178.48	3 238 374.39
L503	-50 532.15	3 237 942.39		R503	-41 209.14	3 238 365.05
L504	-50 687.48	3 237 915.65		R504	-41 342.02	3 238 347.09
L505	-51 241.27	3 237 822.77		R505	-41 698.10	3 238 316.61
L506	-51 537.02	3 237 772.66		R506	-41 897.36	3 238 299.75
L507	-52 522.84	3 237 605.03		R507	-41 971.82	3 238 293.29
L508	-53 713.26	3 237 402.78		R508	-41 991.97	3 238 291.91
L509	-53 804.35	3 237 387.37		R509	-42 295.95	3 238 266.45
L510	-54 297.23	3 237 303.66		R510	-42 547.04	3 238 248.88
				Vel Sheet	32 Van of 38	P1246/24

PADRESERWE KOÖRDINATE / ROAD RESERVE CO-ORDINATES									
LINKERKANT/LEFT HAND SIDE					REGTERKANT/RIGHT HAND SIDE				
	Y	X	WG 17°		Y	X			
L511	-54 395.80	3 237	286.98	R511	-42 623.25	3 238	240.78		
L512	-54 494.38	3 237	270.30	R512	-42 692.84	3 238	234.85		
L513	-54 692.21	3 237	236.74	R513	-42 794.22	3 238	224.94		
L514	-54 888.34	3 237	201.05	R514	-42 893.84	3 238	216.40		
L515	-54 955.12	3 237	194.75	R515	-43 117.72	3 238	197.81		
L516	-55 097.16	3 237	169.57	R516	-43 131.74	3 238	196.49		
L517	-55 157.25	3 237	155.17	R517	-43 591.32	3 238	157.35		
L518	-55 267.00	3 237	139.15	R518	-43 690.94	3 238	148.74		
L519	-55 329.00	3 237	127.78	R519	-44 089.46	3 238	114.82		
L520	-55 382.95	3 237	121.16	R520	-44 587.69	3 238	072.86		
L521	-55 479.86	3 237	100.55	R521	-44 687.32	3 238	064.61		
L522	-55 579.38	3 237	084.78	R522	-44 786.79	3 238	056.12		
L523	-55 665.92	3 237	071.24	R523	-44 789.48	3 238	055.94		
L524	-57 001.32	3 236	843.98	R524	-44 793.55	3 238	055.67		
L525	-57 576.91	3 236	747.15	R525	-44 881.51	3 238	048.16		
L526	-57 608.43	3 236	743.99	R526	-44 895.40	3 238	047.76		
L527	-57 682.83	3 236	726.31	R527	-44 979.69	3 238	048.98		
L528	-57 753.82	3 236	699.31	R528	-45 027.01	3 238	053.83		
L529	-57 820.70	3 236	663.32	R529	-45 069.95	3 238	058.32		
L530	-57 882.34	3 236	618.96	R530	-45 153.71	3 238	075.01		
L531	-57 937.71	3 236	566.97	R531	-45 221.40	3 238	092.42		
L532	-57 985.86	3 236	508.24	R532	-45 296.43	3 238	118.39		
L533	-58 026.25	3 236	443.31	R533	-45 458.30	3 238	185.22		
L534	-58 339.93	3 235	857.33	R534	-45 550.64	3 238	223.61		
L535	-58 366.82	3 235	799.84	R535	-45 643.13	3 238	261.52		
L536	-58 387.22	3 235	740.20	R536	-46 012.59	3 238	414.65		
L537	-58 401.07	3 235	678.71	R537	-46 659.33	3 238	682.39		
L538	-58 408.26	3 235	615.65	R538	-46 688.11	3 238	694.12		
L539	-58 407.60	3 235	599.12	R539	-46 968.45	3 238	813.13		
L540	-58 410.32	3 235	581.10	R540	-47 105.13	3 238	871.16		
L541	-58 410.99	3 235	569.74	R541	-47 180.03	3 238	899.37		
L542	-58 407.24	3 235	554.58	R542	-47 205.34	3 238	907.54		
L543	-58 410.34	3 235	477.05	R543	-47 256.46	3 238	918.92		
L544	-58 425.33	3 235	322.52	R544	-47 287.94	3 238	924.67		
L545	-58 433.88	3 235	185.84	R545	-47 374.73	3 238	929.56		
L546	-58 441.31	3 235	133.41	R546	-47 383.14	3 238	928.12		
L547	-58 454.61	3 235	099.94	R547	-47 398.15	3 238	928.53		
L548	-58 470.00	3 235	073.05	R548	-47 466.38	3 238	928.75		
L549	-58 494.03	3 235	042.35	R549	-47 490.74	3 238	926.80		
L550	-58 527.86	3 235	015.61	R550	-47 541.81	3 238	917.84		
L551	-58 553.80	3 235	001.00	R551	-47 569.63	3 238	912.96		
L552	-58 602.61	3 234	987.63	R552	-47 603.52	3 238	903.51		
L553	-58 653.38	3 234	970.83	R553	-47 645.34	3 238	893.81		
L554	-58 709.05	3 234	939.70	R554	-47 692.18	3 238	878.73		
L555	-58 726.23	3 234	926.15	R555	-47 752.66	3 238	848.62		
L556	-58 753.43	3 234	888.65	R556	-48 063.78	3 238	712.67		
L557	-58 770.82	3 234	854.34	R557	-48 082.62	3 238	705.14		
L558	-58 779.60	3 234	812.70	R558	-48 122.58	3 238	691.32		
L559	-58 778.54	3 234	769.23	R559	-48 155.15	3 238	680.15		
L560	-58 772.72	3 234	727.91	R560	-48 176.04	3 238	670.70		
L561	-58 760.46	3 234	645.74	R561	-48 231.94	3 238	645.88		
					Vel	33	Van	38	P1246/24
					Sheet		of		

PADRESERWE KOÖRDINATE / ROAD RESERVE CO-ORDINATES									
LINKERKANT/LEFT HAND SIDE					REGTERKANT/RIGHT HAND SIDE				
	Y	X	WG	17°		Y	X		
L562	-58 762.36	3 234 610.12			R562	-48 295.63	3 238 621.70		
L563	-58 767.38	3 234 587.43			R563	-48 360.35	3 238 591.76		
L564	-58 775.08	3 234 567.40			R564	-48 658.88	3 238 464.02		
L565	-58 799.35	3 234 530.02			R565	-48 716.86	3 238 438.57		
L566	-58 826.52	3 234 502.71			R566	-49 093.85	3 238 273.92		
L567	-58 839.05	3 234 495.72			R567	-49 203.19	3 238 226.72		
L568	-58 873.85	3 234 482.75			R568	-49 234.63	3 238 219.17		
L569	-58 916.86	3 234 476.87			R569	-49 348.72	3 238 185.40		
L570	-58 971.26	3 234 477.27			R570	-49 488.09	3 238 155.97		
L571	-59 009.35	3 234 473.66			R571	-49 846.45	3 238 094.97		
L572	-59 045.14	3 234 462.65			R572	-49 877.51	3 238 089.68		
L573	-59 077.95	3 234 444.62			R573	-49 917.05	3 238 084.36		
L574	-59 106.44	3 234 420.31			R574	-49 968.15	3 238 074.41		
L575	-59 127.11	3 234 393.70			R575	-50 539.92	3 237 977.62		
L576	-59 146.27	3 234 356.39			R576	-50 567.23	3 237 973.00		
L577	-59 157.13	3 234 327.06			R577	-50 659.83	3 237 956.91		
L578	-59 169.52	3 234 297.70			R578	-50 666.87	3 237 952.67		
L579	-59 185.44	3 234 269.75			R579	-50 852.23	3 237 921.05		
L580	-59 252.95	3 234 191.13			R580	-50 950.84	3 237 904.46		
L581	-59 268.50	3 234 161.00			R581	-51 246.61	3 237 854.23		
L582	-59 297.95	3 234 096.83			R582	-51 443.81	3 237 820.93		
L583	-59 323.09	3 234 058.27			R583	-51 612.73	3 237 796.76		
L584	-59 356.60	3 234 024.25			R584	-51 861.05	3 237 753.56		
L585	-59 381.09	3 234 003.33			R585	-51 874.15	3 237 750.61		
L586	-59 409.79	3 233 975.72			R586	-52 032.28	3 237 725.26		
L587	-59 435.01	3 233 935.50			R587	-52 136.32	3 237 706.07		
L588	-59 450.94	3 233 878.63			R588	-52 179.05	3 237 700.58		
L589	-59 469.01	3 233 852.13			R589	-52 321.10	3 237 674.68		
L590	-59 512.34	3 233 830.54			R590	-52 528.60	3 237 639.43		
L591	-59 527.89	3 233 819.30			R591	-52 554.07	3 237 632.15		
L592	-59 550.57	3 233 808.77			R592	-53 037.01	3 237 550.05		
L593	-59 612.60	3 233 771.12			R593	-53 695.95	3 237 438.20		
L594	-59 638.63	3 233 752.13			R594	-53 715.62	3 237 434.87		
L595	-59 728.93	3 233 701.70			R595	-54 272.85	3 237 340.23		
L596	-59 749.88	3 233 688.24			R596	-54 302.30	3 237 338.11		
L597	-59 778.98	3 233 657.69			R597	-54 358.97	3 237 330.44		
L598	-59 821.19	3 233 602.45			R598	-54 441.86	3 237 315.83		
L599	-59 840.61	3 233 582.94			R599	-54 602.93	3 237 287.04		
L600	-59 853.50	3 233 574.67			R600	-54 644.72	3 237 281.16		
L601	-59 881.08	3 233 561.66			R601	-54 697.74	3 237 270.93		
L602	-59 897.41	3 233 558.90			R602	-54 795.69	3 237 252.67		
L603	-59 932.07	3 233 563.78			R603	-55 085.65	3 237 206.91		
L604	-60 036.96	3 233 499.91			R604	-55 185.36	3 237 191.20		
L605	-60 050.67	3 233 482.79			R605	-55 289.16	3 237 172.23		
L606	-60 067.33	3 233 438.71			R606	-55 394.54	3 237 154.79		
L607	-60 075.25	3 233 391.77			R607	-55 585.89	3 237 122.03		
L608	-60 077.14	3 233 349.94			R608	-55 670.81	3 237 102.67		
L609	-60 088.89	3 233 266.67			R609	-55 781.48	3 237 084.84		
L610	-60 095.72	3 233 231.39			R610	-56 175.50	3 237 020.97		
L611	-60 109.55	3 233 202.14			R611	-56 767.78	3 236 920.27		
L612	-60 148.69	3 233 149.57			R612	-57 007.06	3 236 879.34		
					<div> <div>Vel</div> <div>34</div> <div>Van</div> <div>38</div> <div>Sheet</div> <div>of</div> </div>				
					P1246/24				

PADRESERWE KOÖRDINATE / ROAD RESERVE CO-ORDINATES									
LINKERKANT/LEFT HAND SIDE					REGTERKANT/RIGHT HAND SIDE				
	Y		X	WG 17°		Y		X	
L613	-60 217.37	3	233	084.23	R613	-57 556.53	3	236	785.75
L614	-60 248.33	3	233	076.19	R614	-57 581.30	3	236	783.16
L615	-60 262.06	3	233	066.17	R615	-57 648.06	3	236	770.90
L616	-60 279.66	3	233	060.93	R616	-57 716.85	3	236	752.70
L617	-60 299.67	3	233	048.89	R617	-57 779.27	3	236	726.51
L618	-60 387.50	3	232	970.90	R618	-57 851.39	3	236	686.96
L619	-60 410.30	3	232	961.73	R619	-57 913.01	3	236	640.16
L620	-60 437.18	3	232	940.45	R620	-57 930.25	3	236	623.70
L621	-60 509.75	3	232	916.11	R621	-57 982.98	3	236	570.49
L622	-60 524.67	3	232	903.03	R622	-57 996.04	3	236	550.53
L623	-60 533.99	3	232	883.73	R623	-58 010.31	3	236	535.88
L624	-60 548.46	3	232	859.40	R624	-58 025.47	3	236	513.16
L625	-60 568.29	3	232	822.63	R625	-58 060.79	3	236	450.33
L626	-60 575.14	3	232	794.78	R626	-58 369.16	3	235	872.33
L627	-60 591.95	3	232	779.80	R627	-58 399.31	3	235	808.13
L628	-60 616.26	3	232	744.00	R628	-58 421.19	3	235	741.75
L629	-60 638.94	3	232	725.36	R629	-58 436.02	3	235	671.08
L630	-60 650.39	3	232	711.12	R630	-58 442.24	3	235	599.91
L631	-60 669.09	3	232	666.34	R631	-58 464.39	3	235	215.51
L632	-60 685.86	3	232	638.98	R632	-58 466.83	3	235	196.27
L633	-60 785.10	3	232	573.17	R633	-58 472.40	3	235	181.00
L634	-60 818.79	3	232	563.88	R634	-58 477.96	3	235	141.71
L635	-60 879.28	3	232	564.93	R635	-58 488.52	3	235	114.96
L636	-60 908.48	3	232	569.51	R636	-58 511.64	3	235	081.79
L637	-60 995.24	3	232	623.62	R637	-58 542.43	3	235	057.18
L638	-61 052.21	3	232	683.81	R638	-58 595.38	3	235	028.51
L639	-61 080.29	3	232	720.64	R639	-58 606.98	3	235	026.91
L640	-61 179.03	3	232	815.32	R640	-58 610.34	3	235	022.71
L641	-61 238.43	3	232	860.90	R641	-58 629.08	3	235	013.48
L642	-61 322.57	3	232	908.55	R642	-58 665.20	3	235	000.63
L643	-61 443.96	3	232	977.30	R643	-58 709.69	3	234	979.93
L644	-61 596.67	3	233	063.62	R644	-58 735.14	3	234	962.64
L645	-61 776.64	3	233	162.06	R645	-58 748.97	3	234	948.98
L646	-61 967.98	3	233	268.86	R646	-58 780.08	3	234	909.83
L647	-62 119.06	3	233	352.98	R647	-58 798.64	3	234	879.69
L648	-62 229.61	3	233	415.10	R648	-58 812.74	3	234	845.05
L649	-62 306.48	3	233	457.84	R649	-58 819.31	3	234	812.76
L650	-62 317.08	3	233	463.34	R650	-58 819.61	3	234	778.92
L651	-62 400.83	3	233	509.48	R651	-58 808.63	3	234	735.03
L652	-62 492.09	3	233	557.13	R652	-58 806.00	3	234	706.71
L653	-62 540.48	3	233	583.64	R653	-58 799.03	3	234	685.39
L654	-62 675.64	3	233	646.20	R654	-58 794.23	3	234	651.33
L655	-62 818.14	3	233	703.64	R655	-58 794.34	3	234	616.33
L656	-62 853.07	3	233	715.70	R656	-58 802.33	3	234	588.02
L657	-62 908.83	3	233	741.58	R657	-58 818.05	3	234	574.12
L658	-63 017.15	3	233	783.00	R658	-58 831.13	3	234	568.84
L659	-63 169.29	3	233	828.69	R659	-58 843.68	3	234	555.00
L660	-63 228.81	3	233	849.87	R660	-58 853.64	3	234	534.76
L661	-63 288.96	3	233	876.14	R661	-58 882.75	3	234	513.83
L662	-63 361.81	3	233	901.74	R662	-58 918.92	3	234	508.89
L663	-63 553.53	3	233	970.23	R663	-58 937.48	3	234	509.03
					Vel	35	Van	38	P1246/24
					Sheet		of		

PADRESERWE KOÖRDINATE / ROAD RESERVE CO-ORDINATES									
LINKERKANT/LEFT HAND SIDE					REGTERKANT/RIGHT HAND SIDE				
	Y	X	WG 17°			Y	X		
L664	-63 739.01	3 234	037.63		R664	-58 967.19	3 234	516.89	
L665	-63 886.90	3 234	091.11		R665	-58 982.36	3 234	518.88	
L666	-64 442.96	3 234	295.60		R666	-59 009.56	3 234	516.20	
L667	-64 546.58	3 234	330.38		R667	-59 042.59	3 234	520.61	
L668	-64 802.42	3 234	416.72		R668	-59 074.46	3 234	518.94	
L669	-64 876.33	3 234	440.83		R669	-59 126.27	3 234	504.53	
L670	-64 924.93	3 234	453.40		R670	-59 137.93	3 234	494.44	
L671	-64 989.74	3 234	468.38		R671	-59 154.69	3 234	466.90	
L672	-65 118.89	3 234	501.75		R672	-59 160.34	3 234	444.87	
L673	-65 602.73	3 234	627.61		R673	-59 175.89	3 234	409.83	
L674	-66 086.67	3 234	753.24		R674	-59 189.29	3 234	380.02	
L675	-66 240.98	3 234	793.54		R675	-59 199.48	3 234	342.23	
L676	-66 348.83	3 234	821.28		R676	-59 200.41	3 234	316.12	
L677	-66 453.92	3 234	846.48		R677	-59 204.55	3 234	301.85	
L678	-66 623.20	3 234	859.31		R678	-59 211.74	3 234	295.76	
L679	-66 639.13	3 234	860.14		R679	-59 223.15	3 234	292.46	
L680	-66 750.24	3 234	859.56		R680	-59 242.10	3 234	284.01	
L681	-66 857.56	3 234	851.11		R681	-59 270.51	3 234	243.19	
L682	-66 965.24	3 234	834.81		R682	-59 290.05	3 234	206.66	
L683	-67 070.04	3 234	810.97		R683	-59 319.35	3 234	143.47	
L684	-67 175.95	3 234	780.01		R684	-59 325.16	3 234	115.93	
L685	-67 347.19	3 234	727.65		R685	-59 347.69	3 234	078.91	
L686	-67 364.90	3 234	723.24		R686	-59 383.10	3 234	054.33	
L687	-67 446.47	3 234	704.55		R687	-59 409.05	3 234	023.12	
L688	-67 493.57	3 234	696.12		R688	-59 443.82	3 233	989.85	
L689	-67 562.17	3 234	691.00		R689	-59 458.54	3 233	966.06	
L690	-67 599.21	3 234	690.73		R690	-59 490.86	3 233	911.54	
L691	-67 721.97	3 234	701.88		R691	-59 517.26	3 233	875.15	
L692	-67 769.85	3 234	712.10		R692	-59 583.30	3 233	829.28	
L693	-67 805.42	3 234	721.33		R693	-59 745.98	3 233	728.32	
L694	-67 910.23	3 234	762.27		R694	-59 791.73	3 233	707.08	
L695	-67 981.62	3 234	797.12		R695	-59 810.50	3 233	689.25	
L696	-68 032.51	3 234	835.71		R696	-60 030.51	3 233	551.72	
L697	-68 105.41	3 234	891.75		R697	-60 058.55	3 233	529.70	
L698	-68 164.25	3 234	951.23		R698	-60 081.66	3 233	501.40	
L699	-68 244.06	3 235	053.10		R699	-60 098.02	3 233	468.72	
L700	-68 367.03	3 235	210.87		R700	-60 106.63	3 233	434.12	
L701	-68 428.60	3 235	289.61		R701	-60 126.92	3 233	283.04	
L702	-68 516.79	3 235	402.53		R702	-60 135.55	3 233	246.00	
L703	-68 561.20	3 235	462.29		R703	-60 143.39	3 233	228.54	
L704	-68 625.48	3 235	549.24		R704	-60 151.86	3 233	219.70	
L705	-68 677.10	3 235	615.64		R705	-60 182.85	3 233	176.11	
L706	-68 731.76	3 235	687.13		R706	-60 228.89	3 233	142.34	
L707	-68 788.60	3 235	760.76		R707	-60 274.46	3 233	120.23	
L708	-68 792.86	3 235	766.28		R708	-60 312.14	3 233	098.33	
L709	-68 853.59	3 235	845.68		R709	-60 357.54	3 233	059.81	
L710	-68 909.89	3 235	918.23		R710	-60 374.21	3 233	040.75	
L711	-68 976.36	3 236	003.48		R711	-60 418.92	3 233	002.25	
L712	-69 006.66	3 236	044.31		R712	-60 455.92	3 232	983.82	
L713	-69 037.13	3 236	081.85		R713	-60 476.63	3 232	971.68	
L714	-69 096.15	3 236	154.30		R714	-60 522.47	3 232	950.16	
					Vel Sheet	36	Van of	38	P1246/24

PADRESERVE KOÖRDINATE / ROAD RESERVE CO-ORDINATES									
LINKERKANT/LEFT HAND SIDE					REGTERKANT/RIGHT HAND SIDE				
	Y		X	WG 17°		Y		X	
L715	-69 151.73	3	236	218.76	R715	-60 569.81	3	232	919.75
L716	-69 183.66	3	236	252.98	R716	-60 583.01	3	232	906.26
L717	-69 236.08	3	236	302.35	R717	-60 636.74	3	232	800.60
L718	-69 280.06	3	236	345.38	R718	-60 641.46	3	232	784.26
L719	-69 383.97	3	236	436.98	R719	-60 683.83	3	232	725.96
L720	-69 409.04	3	236	456.85	R720	-60 728.90	3	232	663.93
L721	-69 432.61	3	236	482.15	R721	-60 751.92	3	232	638.60
L722	-69 554.48	3	236	572.62	R722	-60 779.16	3	232	619.37
L723	-69 601.00	3	236	599.22	R723	-60 795.08	3	232	612.71
L724	-69 727.50	3	236	678.08	R724	-60 833.03	3	232	602.77
L725	-69 849.30	3	236	744.41	R725	-60 865.42	3	232	601.56
L726	-69 976.91	3	236	804.67	R726	-60 893.64	3	232	607.76
L727	-70 066.38	3	236	849.34	R727	-60 931.50	3	232	623.56
L728	-70 326.97	3	236	966.84	R728	-60 942.55	3	232	629.76
L729	-70 442.31	3	237	024.90	R729	-60 964.14	3	232	647.81
L730	-70 483.59	3	237	048.94	R730	-61 029.06	3	232	719.63
L731	-70 553.55	3	237	091.45	R731	-61 129.53	3	232	818.09
L732	-70 658.25	3	237	168.37	R732	-61 215.42	3	232	885.62
L733	-70 745.37	3	237	240.02	R733	-61 252.53	3	232	908.61
L734	-70 805.38	3	237	286.06	R734	-61 298.19	3	232	934.26
L735	-70 861.66	3	237	334.08	R735	-61 340.48	3	232	957.78
L736	-70 881.85	3	237	346.86	R736	-61 383.63	3	232	983.77
L737	-70 920.11	3	237	377.37	R737	-61 406.26	3	232	995.07
L738	-71 100.58	3	237	531.54	R738	-61 510.18	3	233	054.75
L739	-71 125.71	3	237	548.81	R739	-61 552.64	3	233	075.73
L740	-71 181.93	3	237	586.32	R740	-61 747.08	3	233	184.15
L741	-71 247.35	3	237	625.88	R741	-61 776.06	3	233	202.71
L742	-71 287.29	3	237	649.40	R742	-61 801.07	3	233	215.11
L743	-71 399.81	3	237	695.02	R743	-61 863.53	3	233	250.89
L744	-71 458.41	3	237	712.14	R744	-61 925.32	3	233	286.51
L745	-71 550.04	3	237	727.98	R745	-61 976.23	3	233	317.88
L746	-71 989.39	3	237	778.57	R746	-62 058.93	3	233	363.59
L747	-72 003.25	3	237	776.07	R747	-62 134.67	3	233	400.64
L748	-72 061.76	3	237	782.79	R748	-62 213.17	3	233	444.57
REGTERKANT/RIGHT HAND SIDE					R749	-62 291.87	3	233	490.71
					R750	-62 310.63	3	233	500.12
					R751	-62 388.38	3	233	548.34
					R752	-62 447.99	3	233	579.56
					R753	-62 471.18	3	233	588.79
					R754	-62 522.24	3	233	613.70
					R755	-62 661.91	3	233	678.38
					R756	-62 805.56	3	233	740.56
					R757	-62 942.92	3	233	796.34
					R758	-64 004.69	3	234	179.36
					R759	-64 163.31	3	234	231.73
					R760	-64 345.97	3	234	297.53
					R761	-64 433.65	3	234	328.91
					R762	-64 543.78	3	234	368.55
					R763	-64 629.67	3	234	395.72
					R764	-64 819.71	3	234	460.45
					R765	-64 915.93	3	234	487.50
					Vel	37	Van	38	P1246/24
					Sheet		of		

PADRESERWE KOÖRDINATE / ROAD RESERVE CO-ORDINATES						
REGERKANT/RIGHT HAND SIDE				REGERKANT/RIGHT HAND SIDE		
	Y	X	WG 17°		Y	X
R778	-66 532.23	3 234	887.21	R829	-69 094.20	3 236 203.93
R779	-66 568.17	3 234	893.52	R830	-69 148.74	3 236 266.55
R780	-66 595.34	3 234	894.56	R831	-69 214.84	3 236 335.71
R781	-66 617.26	3 234	901.37	R832	-69 255.58	3 236 373.82
R782	-66 643.96	3 234	898.54	R833	-69 359.50	3 236 465.70
R783	-66 749.80	3 234	898.10	R834	-69 394.99	3 236 494.91
R784	-66 796.97	3 234	896.77	R835	-69 479.17	3 236 558.06
R785	-66 818.78	3 234	892.64	R836	-69 536.20	3 236 598.90
R786	-66 846.60	3 234	891.07	R837	-69 563.68	3 236 617.03
R787	-66 894.55	3 234	882.83	R838	-69 588.29	3 236 634.18
R788	-66 971.18	3 234	871.76	R839	-69 632.35	3 236 661.79
R789	-67 070.75	3 234	851.95	R840	-69 665.04	3 236 682.79
R790	-67 093.62	3 234	843.07	R841	-69 708.39	3 236 709.46
R791	-67 186.82	3 234	816.98	R842	-69 724.38	3 236 717.90
R792	-67 289.57	3 234	785.12	R843	-69 803.39	3 236 760.95
R793	-67 308.69	3 234	783.43	R844	-69 840.58	3 236 780.65
R794	-67 348.67	3 234	770.85	R845	-69 956.94	3 236 837.94
R795	-67 453.99	3 234	743.03	R846	-70 084.76	3 236 895.58
R796	-67 518.98	3 234	733.85	R847	-70 136.22	3 236 918.47
R797	-67 559.47	3 234	727.18	R848	-70 315.33	3 236 998.55
R798	-67 598.69	3 234	726.79	R849	-70 400.70	3 237 040.34
R799	-67 637.50	3 234	728.20	R850	-70 412.89	3 237 046.03
R800	-67 725.31	3 234	739.70	R851	-70 534.64	3 237 119.30
R801	-67 811.11	3 234	761.69	R852	-70 619.36	3 237 182.01
R802	-67 836.83	3 234	772.76	R853	-70 654.28	3 237 211.39
R803	-67 879.67	3 234	789.07	R854	-70 744.45	3 237 284.02
R804	-67 907.04	3 234	804.66	R855	-70 786.91	3 237 321.33
R805	-67 925.72	3 234	812.71	R856	-70 850.12	3 237 369.48
R806	-67 958.18	3 234	831.44	R857	-71 080.26	3 237 556.45
R807	-68 007.00	3 234	866.84	R858	-71 104.03	3 237 573.73
R808	-68 060.55	3 234	905.65	R859	-71 159.21	3 237 616.59
R809	-68 083.45	3 234	927.24	R860	-71 194.99	3 237 639.08
R810	-68 125.85	3 234	967.04	R861	-71 239.69	3 237 668.92
R811	-68 151.34	3 234	998.39	R862	-71 290.38	3 237 694.80
R812	-68 179.90	3 235	033.78	R863	-71 348.76	3 237 720.30
R813	-68 213.12	3 235	076.93	R864	-71 401.13	3 237 735.71
R814	-68 457.97	3 235	393.19	R865	-71 428.67	3 237 741.79
R815	-68 492.17	3 235	437.13	R866	-71 451.17	3 237 743.37
R816	-68 519.10	3 235	472.28	R867	-71 545.48	3 237 759.67
R817	-68 640.35	3 235	631.27	R868	-71 985.73	3 237 810.36
R818	-68 660.44	3 235	657.95	R869	-72 044.40	3 237 816.10
R819	-68 766.24	3 235	797.12			
R820	-68 778.35	3 235	813.05			
R821	-68 793.79	3 235	832.45			
R822	-68 821.11	3 235	866.77			
R823	-68 847.31	3 235	899.76			
R824	-68 873.46	3 235	932.77			
R825	-68 908.60	3 235	976.53			
R826	-68 947.81	3 236	025.59			
R827	-68 976.49	3 236	066.60			
R828	-69 071.37	3 236	183.46			
				Vel Sheet	38 of	P1246/24