

---

**GOVERNMENT NOTICES • GOEWERMENTSKENNISGEWINGS**

---

**DEPARTMENT OF TRANSPORT****NO. 5030****12 July 2024****THE SOUTH AFRICAN NATIONAL ROADS  
AGENCY SOC LIMITED****Registration No: 1998/009584/30**

---

**DECLARATION AMENDMENT OF NATIONAL ROAD R391 SECTION 2**

AMENDMENT OF DECLARATION No. 733 OF 2016.

By virtue of section 40(1)(b) of the South African National Roads Agency Limited and the National Roads Act 1998 (Act No. 7 of 1998), I hereby amend Declaration No. 733 of 2016 by substituting paragraph C of the Schedule, being the descriptive declaration of the route from its junction with National Road R56 Section 2 up to Burgersdorp, with the accompanying sheets 1 to 10 of Plan No. P1227/22.

In the town of Burgersdorp the R391 Section 2 enters the town from the South and then follows the street known as Queen Road which becomes Station Road up to its junction with streets known as Coligny Street and Smit Street, at the time of declaration.

**(National Road R391 Section 2: R56 Junction - Burgersdorp)**  
**MINISTER OF TRANSPORT**

## DEPARTEMENT VAN VERVOER

NO. 5030

12 Julie 2024

**DIE SUID-AFRIKAANSE NASIONALE  
PADAGENTSKAP MSB BEPERK**

Registrasie No: 1998/009584/30

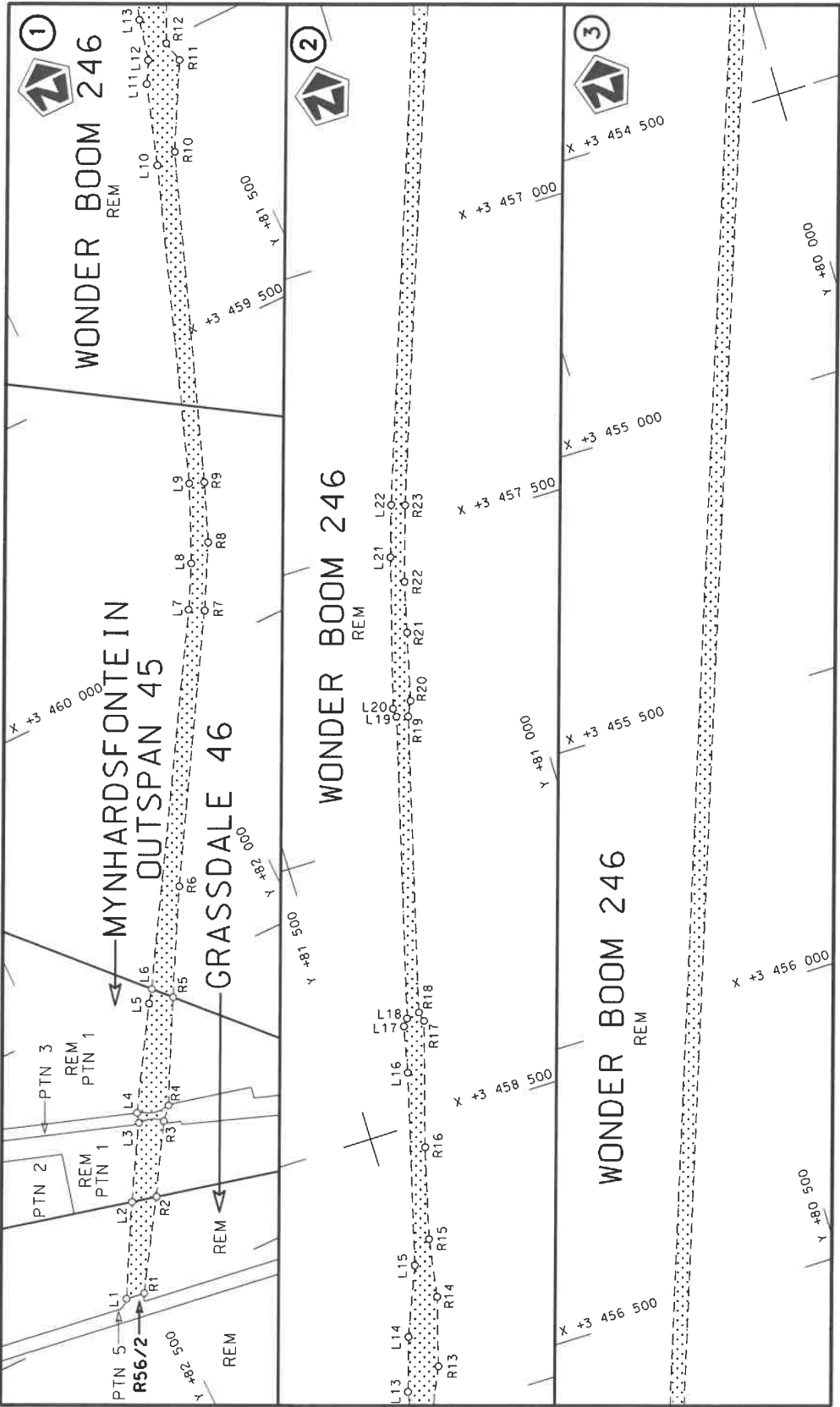
**VERKLARING WYSIGING VAN NASIONALE PAD R391 SEKSIE 2**


WYSIGING VAN VERKLARING No. 733 VAN 2016.

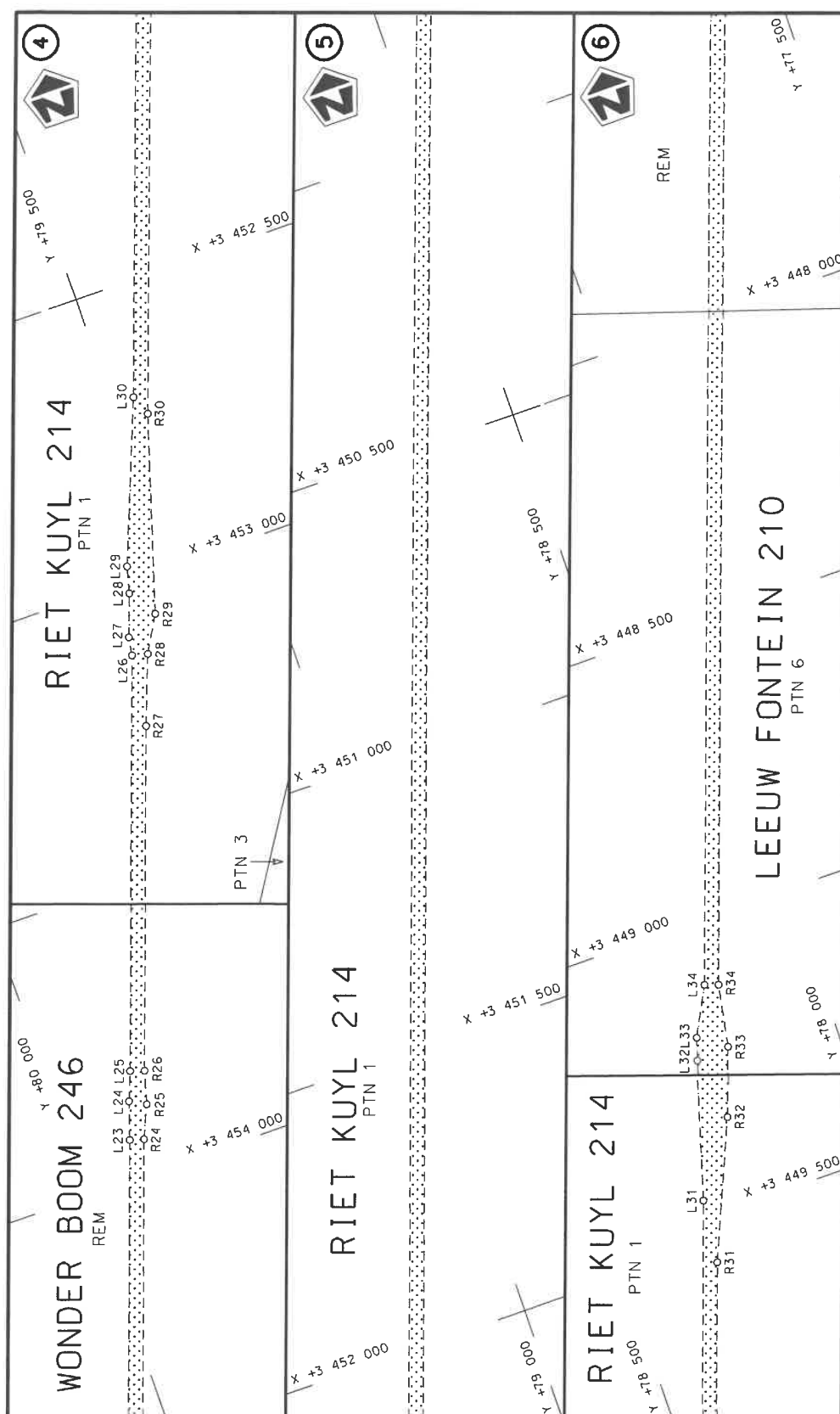
Kragtens Artikel 40(1)(b) van die Suid-Afrikaanse Nasionale Padagentskap Beperk en Nasionale Paaie Wet 1998 (Wet No. 7 van 1998), wysig ek hiermee Verklaring No. 733 van 2016 deur paragraaf C van die Skedule te vervang, synde die gedeelte van die beskrywende verklaring van die pad vanaf die aansluiting met Nasionale Pad R56 tot by Burgersdorp, met bygaande velle 1 tot 10 van Plan No. P1227/22.


In die dorp van Burgersdorp kom die R391 Seksie 2 die dorp binne vanuit die Suide en volg dan die straat bekend as Koninginweg wat Stasieweg word tot by sy aansluiting met strate bekend as Colignystraat en Smitstraat, tydens datum van verklaring.

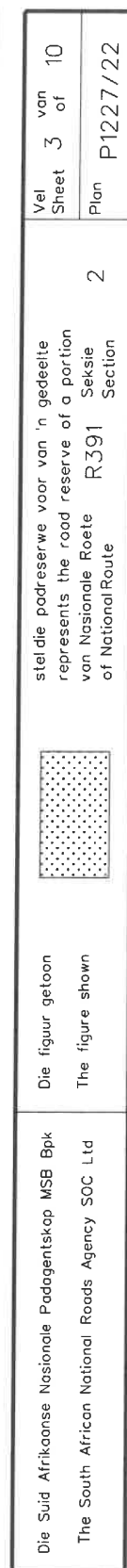
**(Nasionale Pad R391 Seksie 2: R56 Kruising – Burgersdorp)**  
MINISTER VAN VERVOER

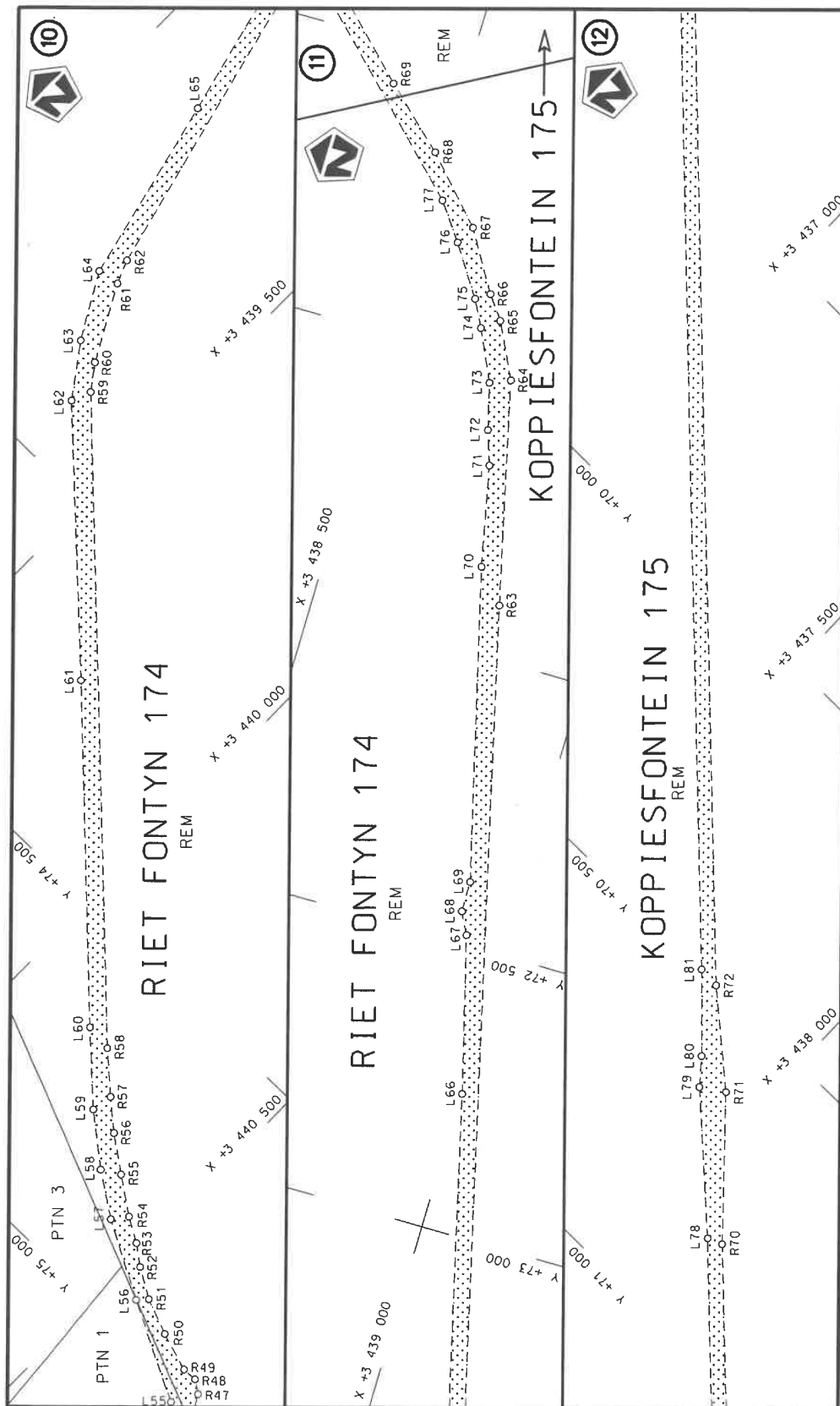



Die Suid Afrikaanse Nasionale Padagentskap MSB Bpk The South African National Roads Agency SOC Ltd	Die figuur getoon The figure shown		steldie padreserwe voor van 'n gedeelte represents the road reserve of a portion van Nasionale Roete R391 of National Route	Seksie Section 2	Plan P1227/22
				Vel Sheet 1 of 10	

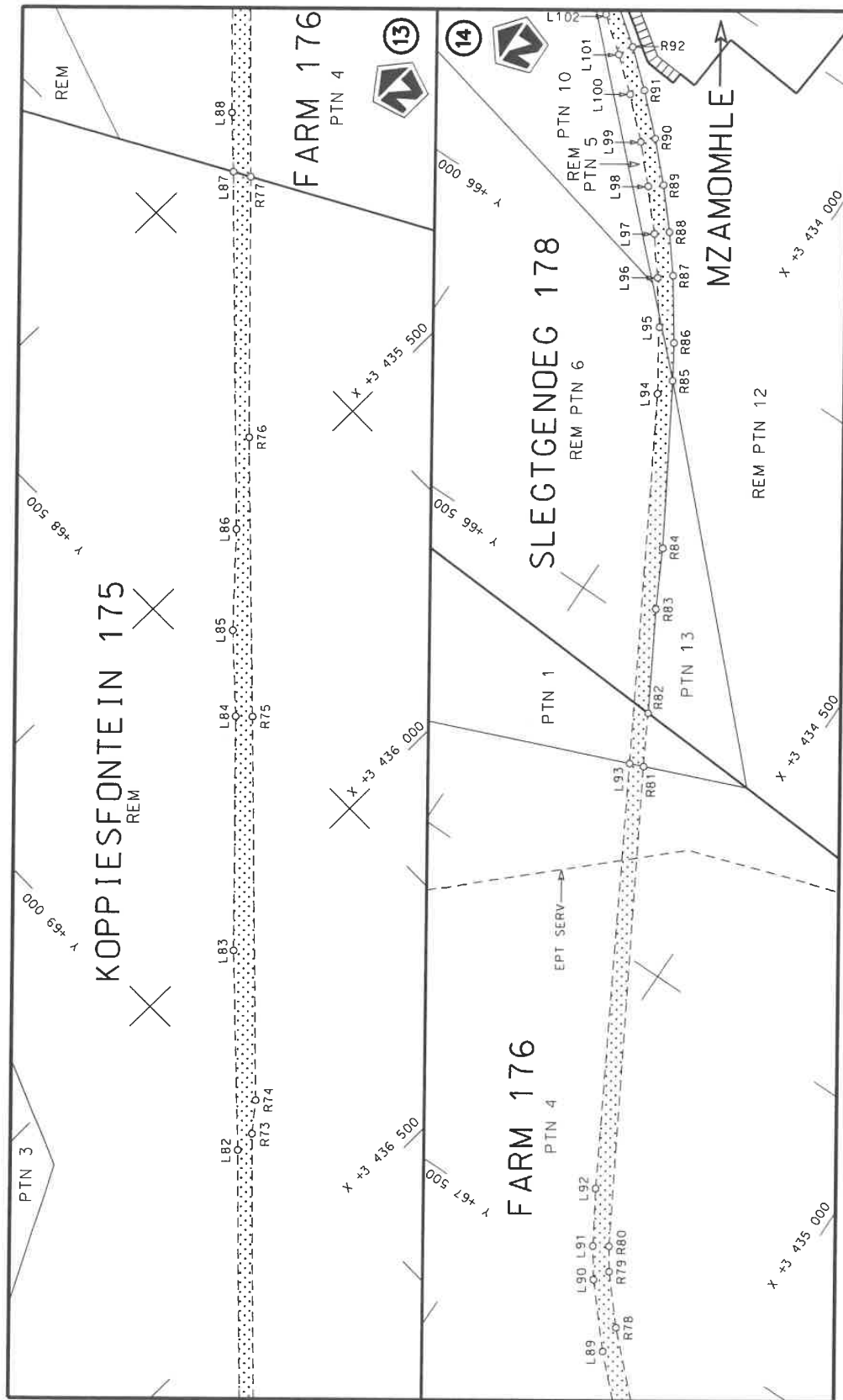


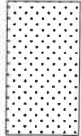
Die Suid Afrikaanse Nasionale Podogentskap MSB Bpk	Die figuur getoon		steldie padreserwe voor van 'n gedeelte represents the road reserve of a portion van Nasionale Roete R391 of National Route	Vel Sheet 2 of 10
The South African National Roads Agency SOC Ltd	The figure shown			Plan P1227/22



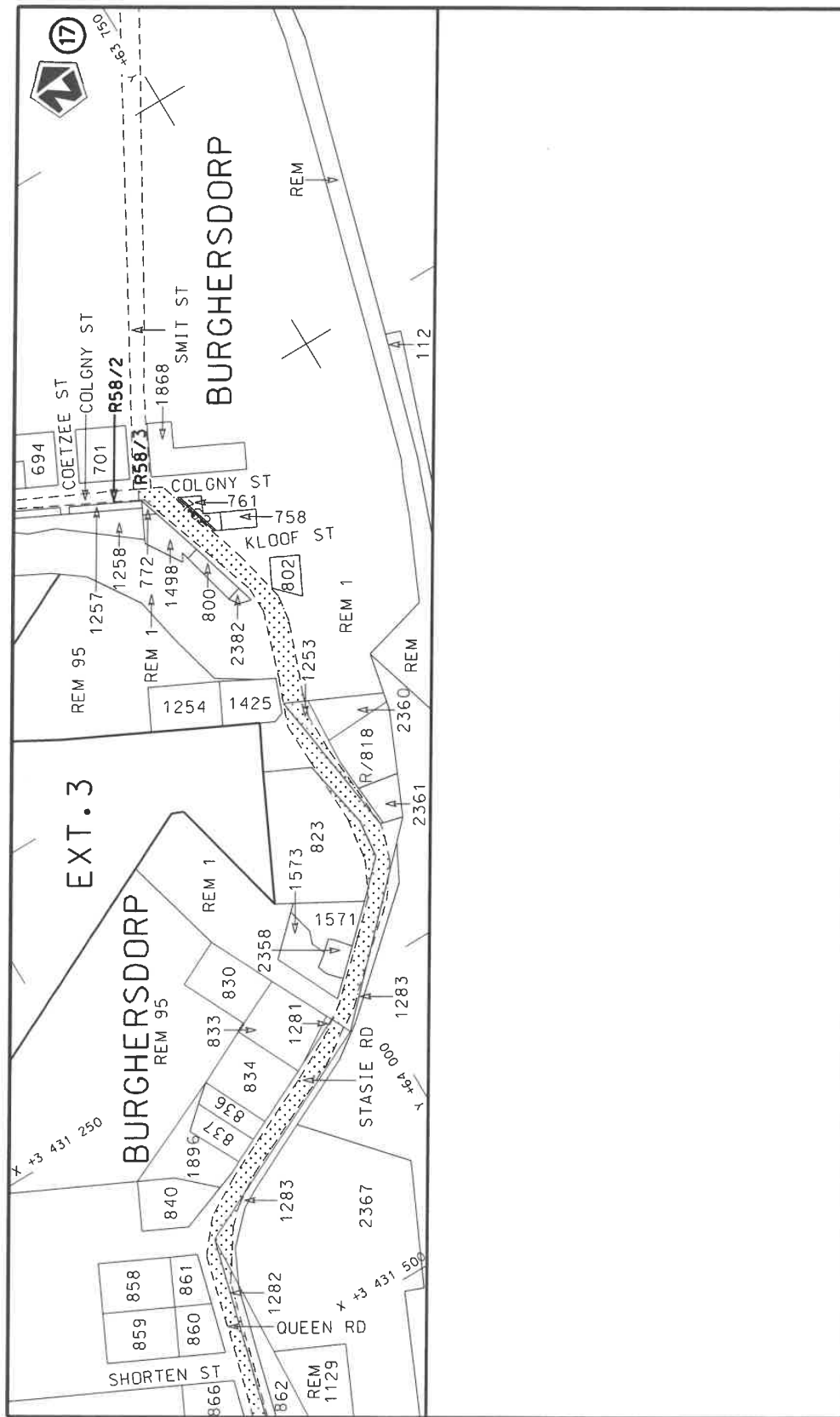



Die Suid Afrikaanse Nasionale Padagentskap MSB Bpk The South African National Roads Agency SOC Ltd	Die figuur getoon The figure shown		steldie padreserwe voor van 'n gedeelte represents the road reserve of a portion van Nasionale Roete R391 of National Route Section	
			Vel Sheet 4 of 10	Plan P1227/22



Die Suid Afrikaanse Nasionale Padagentskap MSB Bpk The South African National Roads Agency SOC Ltd	Die figuur getoon The figure shown		stel die padreserwe voor van 'n gedeelte represents the road reserve of a portion van Nasionale Roete R391 of National Route Section	2	Plan P1227/22
Vel Sheet 5 of 10					





Die Suid Afrikaanse Nasionale Padagentskap MSB Bpk The South African National Roads Agency SOC Ltd	Die figuur getoon The figure shown		stelt die padreserwe voor van 'n gedeelte represents the road reserve of a portion van Nasionale Roete R391 of National Route	Vel Sheet 7 van of 10	Plan P1227/22
---	---------------------------------------	---	--	-----------------------------	---------------

PADRESERWE KOÖRDINATE / ROAD RESERVE CO-ORDINATES									
LINKERKANT/LEFT HAND SIDE					REGTERKANT/RIGHT HAND SIDE				
	Y	X	WG 27°			Y	X		
L1	82 560.85	3 460 981.86		R1	82 528.28	3 460 986.36			
L2	82 478.38	3 460 830.91		R2	82 435.23	3 460 841.52			
L3	82 406.98	3 460 709.84		R3	82 366.21	3 460 725.91			
L4	82 402.50	3 460 692.66		R4	82 346.70	3 460 704.50			
L5	82 299.01	3 460 526.63		R5	82 256.65	3 460 535.14			
L6	82 284.27	3 460 505.75		R6	82 161.41	3 460 362.58			
L7	81 935.98	3 459 927.86		R7	81 911.08	3 459 941.36			
L8	81 896.63	3 459 856.08		R8	81 853.56	3 459 835.07			
L9	81 839.11	3 459 726.74		R9	81 813.96	3 459 736.30			
L10	81 648.90	3 459 194.37		R10	81 610.65	3 459 185.70			
L11	81 604.14	3 459 056.15		R11	81 533.80	3 459 042.93			
L12	81 583.72	3 459 019.30		R12	81 542.42	3 459 006.15			
L13	81 567.20	3 458 948.13		R13	81 502.51	3 458 920.93			
L14	81 537.99	3 458 855.36		R14	81 468.69	3 458 802.16			
L15	81 490.31	3 458 737.60		R15	81 452.69	3 458 700.31			
L16	81 402.12	3 458 407.40		R16	81 411.53	3 458 542.76			
L17	81 384.67	3 458 326.85		R17	81 348.07	3 458 328.00			
L18	81 375.25	3 458 315.21		R18	81 352.27	3 458 311.41			
L19	81 237.04	3 457 798.89		R19	81 217.08	3 457 804.61			
L20	81 238.81	3 457 783.53		R20	81 205.01	3 457 779.65			
L21	81 164.82	3 457 525.75		R21	81 175.38	3 457 662.06			
L22	81 136.66	3 457 437.81		R22	81 153.65	3 457 574.81			
L23	79 897.99	3 453 931.47		R23	81 112.91	3 457 445.65			
L24	79 876.95	3 453 866.65		R24	79 874.04	3 453 938.33			
L25	79 857.41	3 453 816.81		R25	79 849.18	3 453 881.92			
L26	79 613.14	3 453 125.15		R26	79 833.41	3 453 824.45			
L27	79 607.86	3 453 093.13		R27	79 630.70	3 453 250.89			
L28	79 581.67	3 453 020.20		R28	79 586.00	3 453 131.78			
L29	79 569.77	3 452 974.04		R29	79 550.66	3 453 069.44			
L30	79 461.23	3 452 695.70		R30	79 447.11	3 452 731.71			
L31	78 320.82	3 449 468.44		R31	78 333.51	3 449 579.28			
L32	78 251.08	3 449 231.56		R32	78 232.70	3 449 343.45			
L33	78 237.58	3 449 192.84		R33	78 190.82	3 449 226.39			
L34	78 194.02	3 449 109.23		R34	78 170.54	3 449 117.38			
L35	76 583.92	3 444 553.28		R35	76 544.79	3 444 519.54			
L36	76 522.54	3 444 388.01		R36	76 465.43	3 444 315.73			
L37	76 489.91	3 444 306.14		R37	76 213.09	3 443 723.12			
L38	75 815.38	3 442 730.79		R38	75 347.43	3 441 698.07			
L39	75 822.83	3 442 713.86		R39	75 313.26	3 441 597.15			
L40	75 803.59	3 442 682.95		R40	75 095.42	3 440 993.43			
L41	75 792.92	3 442 678.54		R41	75 088.98	3 440 968.24			
L42	75 421.24	3 441 806.40		R42	75 073.46	3 440 934.97			
L43	75 385.36	3 441 699.56		R43	75 043.66	3 440 906.27			
L44	75 334.68	3 441 578.23		R44	75 032.48	3 440 863.90			
L45	75 309.48	3 441 511.69		R45	75 027.90	3 440 791.18			
L46	75 305.19	3 441 500.32		R46	75 015.50	3 440 765.26			
L47	75 284.38	3 441 445.83		R47	74 986.70	3 440 748.40			
L48	75 247.16	3 441 334.10		R48	74 970.48	3 440 725.96			
L49	75 185.71	3 441 146.44		R49	74 971.58	3 440 699.73			
L50	75 160.81	3 441 085.44		R50	74 950.55	3 440 631.28			
L51	75 139.82	3 441 025.12		R51	74 925.99	3 440 567.91			
					Vel 8	Van 10	P1227/22		
					Sheet	of			

PADRESERWE KOÖRDINATE / ROAD RESERVE CO-ORDINATES									
LINKERKANT/LEFT HAND SIDE					REGTERKANT/RIGHT HAND SIDE				
	Y	X	WG 27°			Y	X		
L52	75 128.13	3 440 957.47		R52	74 896.01	3 440 516.69			
L53	75 100.44	3 440 847.51		R53	74 870.27	3 440 482.74			
L54	75 063.26	3 440 769.53		R54	74 845.65	3 440 440.32			
L55	75 030.11	3 440 723.71		R55	74 802.22	3 440 378.08			
L56	74 943.50	3 440 552.97		R56	74 758.33	3 440 317.79			
L57	74 871.54	3 440 420.71		R57	74 716.53	3 440 268.59			
L58	74 821.03	3 440 346.35		R58	74 659.08	3 440 203.97			
L59	74 753.81	3 440 262.48		R59	73 849.40	3 439 369.44			
L60	74 653.86	3 440 156.40		R60	73 806.75	3 439 338.11			
L61	74 226.11	3 439 714.43		R61	73 679.79	3 439 268.23			
L62	73 884.25	3 439 355.91		R62	73 638.96	3 439 251.56			
L63	73 796.60	3 439 292.72		R63	71 906.12	3 438 821.30			
L64	73 686.06	3 439 230.25		R64	71 518.17	3 438 728.05			
L65	73 359.98	3 439 152.81		R65	71 422.17	3 438 680.37			
L66	72 754.36	3 439 002.17		R66	71 381.57	3 438 650.27			
L67	72 482.06	3 438 930.27		R67	71 277.28	3 438 587.23			
L68	72 443.88	3 438 910.67		R68	71 167.96	3 438 485.14			
L69	72 389.99	3 438 909.92		R69	71 071.81	3 438 379.48			
L70	71 848.92	3 438 771.65		R70	70 823.51	3 438 125.10			
L71	71 672.99	3 438 734.54		R71	70 625.82	3 437 941.71			
L72	71 613.58	3 438 714.12		R72	70 502.60	3 437 796.83			
L73	71 532.44	3 438 693.17		R73	69 030.24	3 436 290.52			
L74	71 443.80	3 438 650.93		R74	68 983.64	3 436 252.51			
L75	71 397.17	3 438 626.47		R75	68 507.86	3 435 761.54			
L76	71 309.73	3 438 568.47		R76	68 163.51	3 435 402.64			
L77	71 246.00	3 438 521.61		R77	67 836.78	3 435 073.23			
L78	70 833.56	3 438 099.47		R78	67 559.62	3 434 789.92			
L79	70 652.01	3 437 901.33		R79	67 483.77	3 434 723.57			
L80	70 609.84	3 437 865.86		R80	67 446.58	3 434 698.02			
L81	70 500.28	3 437 758.50		R81	66 703.69	3 434 268.69			
L82	69 068.53	3 436 293.74		R82	66 620.49	3 434 222.29			
L83	68 823.79	3 436 034.85		R83	66 459.27	3 434 129.24			
L84	68 528.44	3 435 739.96		R84	66 362.97	3 434 078.49			
L85	68 424.91	3 435 627.28		R85	66 106.33	3 433 925.11			
L86	68 294.17	3 435 503.35		R86	66 049.24	3 433 889.17			
L87	67 852.29	3 435 045.18		R87	65 951.23	3 433 820.35			
L88	67 780.37	3 434 968.32		R88	65 890.64	3 433 771.34			
L89	67 608.14	3 434 793.91		R89	65 827.37	3 433 715.47			
L90	67 511.24	3 434 708.26		R90	65 767.14	3 433 656.78			
L91	67 462.14	3 434 673.67		R91	65 706.78	3 433 592.28			
L92	67 374.32	3 434 620.25		R92	65 654.48	3 433 531.36			
L93	66 713.12	3 434 245.29		R93	65 601.28	3 433 460.56			
L94	66 139.90	3 433 916.42		R94	65 493.27	3 433 308.20			
L95	66 040.53	3 433 851.93		R95	65 439.14	3 433 198.34			
L96	65 969.42	3 433 799.92		R96	65 364.89	3 433 063.71			
L97	65 907.97	3 433 750.89		R97	65 098.90	3 432 586.03			
L98	65 844.30	3 433 694.40		R98	65 057.15	3 432 519.83			
L99	65 786.11	3 433 638.93		R99	64 976.89	3 432 399.15			
L100	65 726.69	3 433 574.96		R100	64 887.95	3 432 291.95			
L101	65 679.40	3 433 518.42		R101	64 826.02	3 432 227.27			
L102	65 633.30	3 433 459.11		R102	64 785.21	3 432 180.96			
					Vel Sheet	9	Van of	10	P1227/22

PADRESERWE KOÖRDINATE / ROAD RESERVE CO-ORDINATES									
LINKERKANT/LEFT HAND SIDE					REGTERKANT/RIGHT HAND SIDE				
	Y		X	WG 27°		Y		X	
L103	65	490.26	3	433	241.62	R103	64	747.21	3 432 141.84
L104	65	180.75	3	432	663.96	R104	64	638.22	3 432 036.80
L105	65	167.29	3	432	629.98	R105	64	593.21	3 431 995.77
L106	65	138.75	3	432	574.49	R106	64	568.97	3 431 967.95
L107	65	084.61	3	432	488.98				
L108	65	000.64	3	432	380.81				
L109	64	910.35	3	432	271.99				
L110	64	812.63	3	432	169.79				
L111	64	724.29	3	432	083.66				
L112	64	679.46	3	432	043.92				
L113	64	664.26	3	432	030.88				
L114	64	606.28	3	431	964.26				
L115	64	590.38	3	431	945.99				
					</				