
GOVERNMENT NOTICES • GOEWERMENSKENNISGEWINGS

DEPARTMENT OF TRANSPORT

NO. 4428

23 February 2024

**THE SOUTH AFRICAN NATIONAL ROADS
AGENCY SOC LIMITED**Registration No: 1998/009584/30

DECLARATION AMENDMENT OF NATIONAL ROAD N8 SECTION 12

AMENDMENT OF DECLARATION No. 901 OF 2021.

By virtue of section 40(1)(b) of The South African National Roads Agency Limited and National Roads Act, 1998 (Act No. 7 of 1998), I hereby amend Declaration No. 901 of 2021, the section of the road from its intersection with National Road N8 Section 12 near points L243 and R239 on sheet 14 of Plan No. P1142/19 up to its end, at Ladybrand, by substituting all sheets of their respective Plans with the accompanying sheets 1 to 5 of Plan No. P1235/23 and by changing the route's number, for this section of road, from National Road N8 Section 12 to National Road R26 Section 5.

(National Road R26 Section 5: N8 Intersection – Ladybrand)**MINISTER OF TRANSPORT**

DEPARTEMENT VAN VERVOER

NO. 4428

23 Februarie 2024

**DIE SUID-AFRIKAANSE NASIONALE
PADAGENTSKAP MSB BEPERK**

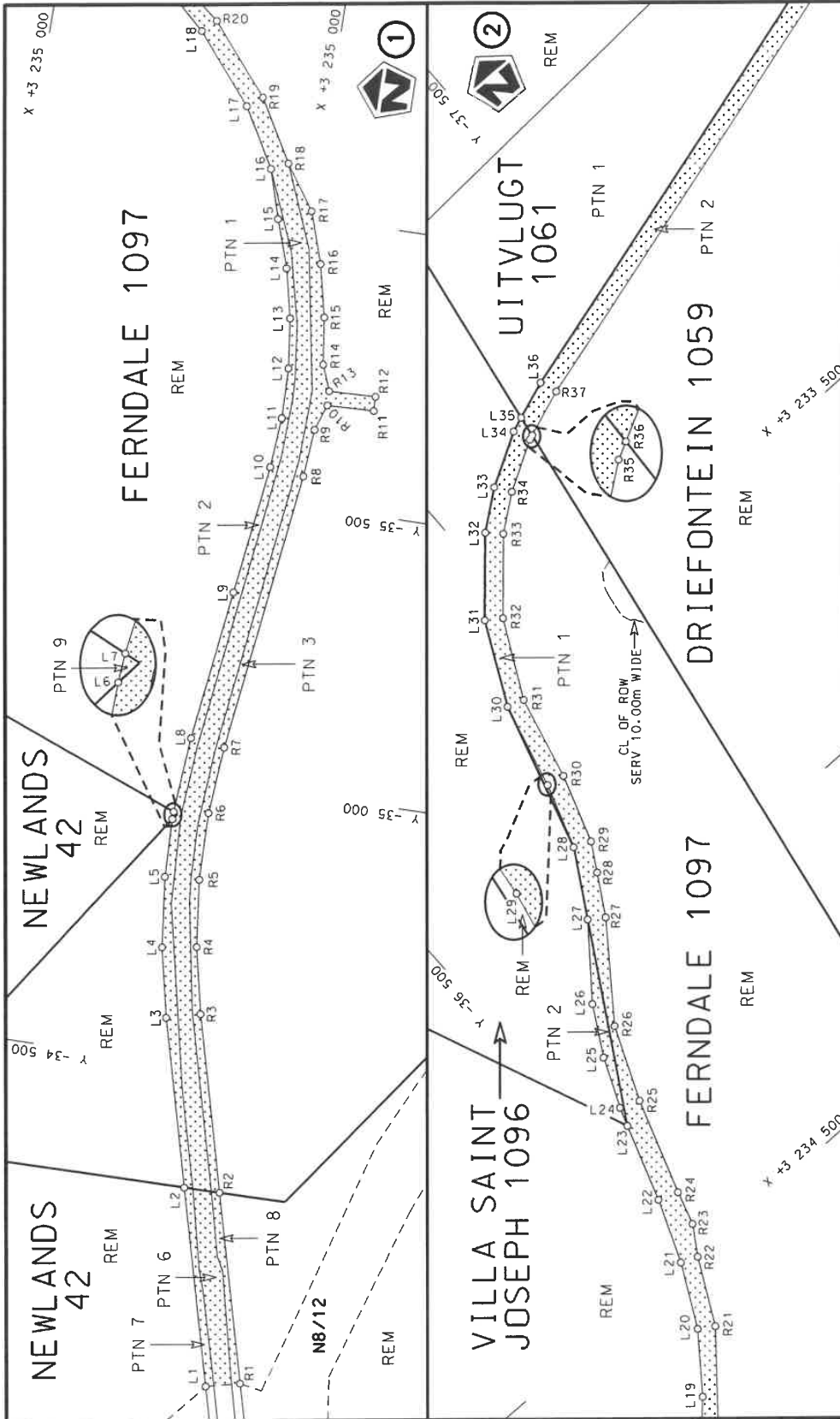
Registrasie No: 1998/009584/30

VERKLARING WYSIGING VAN NASIONALE PAD N8 SEKSIE 12

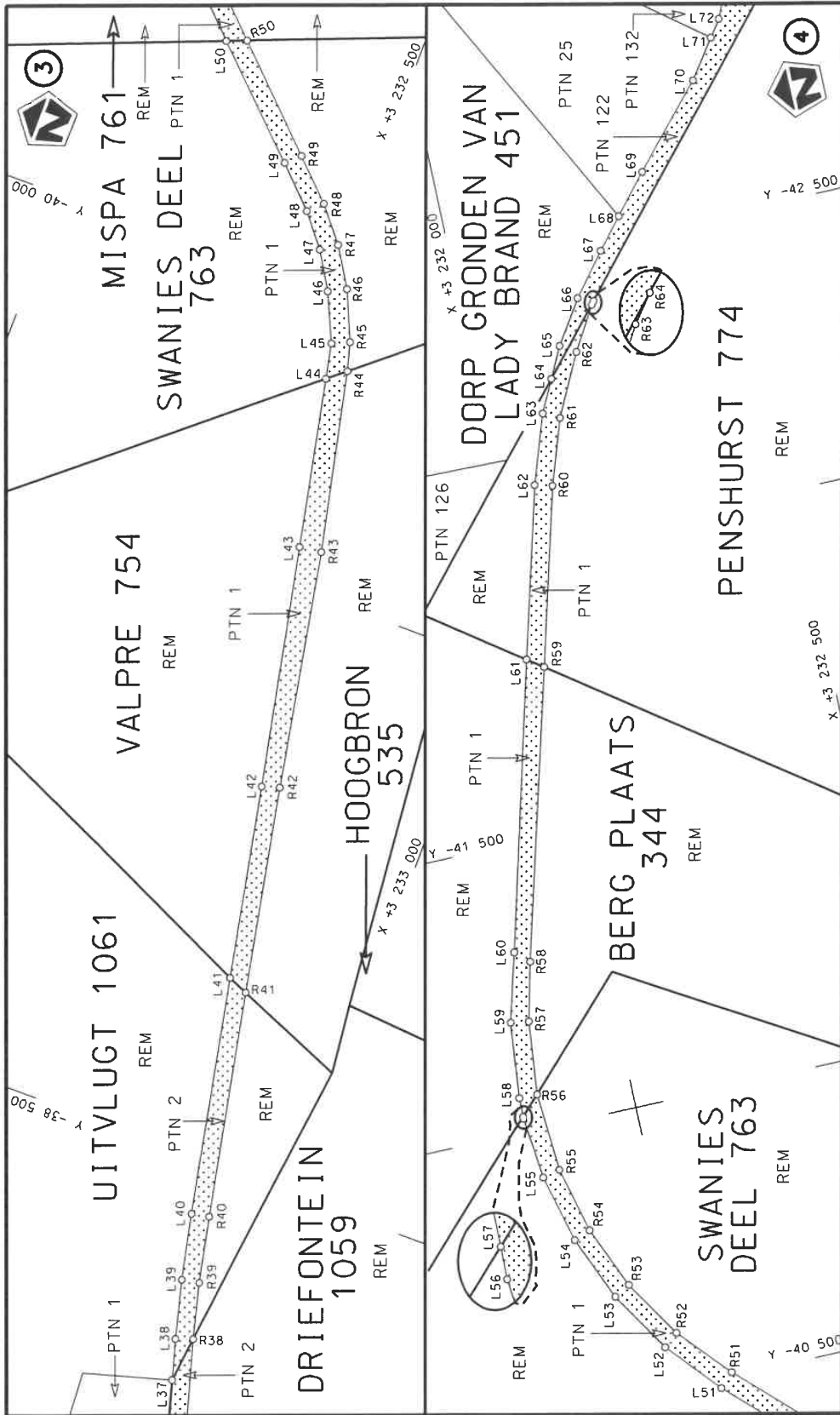
WYSIGING VAN VERKLARING No. 901 VAN 2021.

Kragtens Artikel 40(1)(b) van die Wet op die Suid-Afrikaanse Nasionale Padagentskap Beperk en op Nasionale Paaie, 1998 (Wet No.7 van 1998), wysig ek hiermee Verklaring No. 901 van 2021, die seksie van pad vanaf die interseksie met Nasionale Pad N8 Seksie 12 naby punte L243 en R239 op vel 14 van Plan No. P1142/19 tot op die einde, by Ladybrand, deur alle velle van hulle respektiewelike Planne te vervang met meegaande velle 1 tot 5 van Plan No. P1235/23 en deur die roetenommer te verander, vir die gedeelte van pad, vanaf Nasionale Pad N8 Seksie 12 na Nasionale Pad R26 Seksie 5.

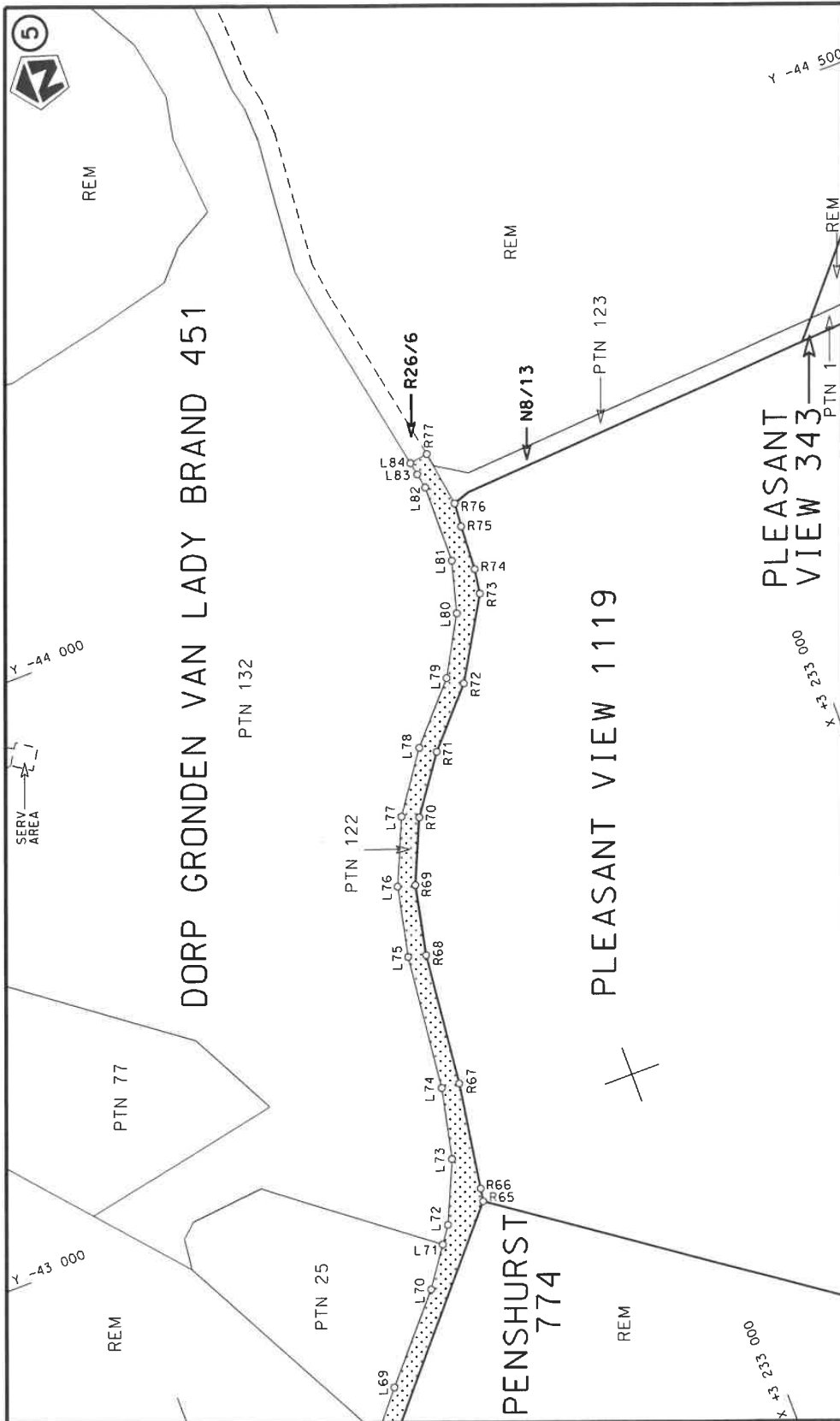
(Nasionale Pad R26 Seksie: N8 Interseksie – Ladybrand)
MINISTER VAN VERVOER



| | | | |
|---|---------------------------------------|---|-----------------------------------|
| Die Suid Afrikaanse Nasionale Padagentskap MSB Bpk The South African National Roads Agency SOC Ltd | Die figuur getoon The figure shown | <p>stelt die podreserwe voor van 'n gedeelte represents the road reserve of a portion van Nasionale Roete R26 of National Route Section</p> | Vel Sheet 1 of 5 Plan P1235/23 |
|---|---------------------------------------|---|-----------------------------------|



| | | |
|---|---------------------------------------|--|
| Die Suid Afrikaanse Nasionale Padagentskap MSB Bpk The South African National Roads Agency SOC Ltd | Die figuur getoon The figure shown | steldie padreserwe voor van 'n gedeelte represents the road reserve of a portion van Nasionale Roete R26 of National Route Seksie Section |
| Vel Sheet 2 of 5 | 5 | Plan P1235/23 |



| | | | | |
|---|---|--|---|---|
| <p>Die Suid Afrikaanse Nasionale Padagentskap MSB Bpk The South African National Roads Agency SOC Ltd</p> | <p>Die figuur getoon The figure shown</p> | | <p>steidie padreserwe voor van 'n gedeelte represents the road reserve of a portion van Nasionale Roete R26 of National Route Section</p> | <p>Vel Sheet 3 of 5 Plan P1235/23</p> |
|---|---|--|---|---|

| PADRESERWE KOÖRDINATE / ROAD RESERVE CO-ORDINATES | | | | | | | |
|---|-----|--------|--------------|----------------------------|-----|--------|--------------|
| LINKERKANT/LEFT HAND SIDE | | | | REGTERKANT/RIGHT HAND SIDE | | | |
| | Y | X | WG 27° | | Y | X | |
| L1 | -33 | 949.80 | 3 235 124.83 | R1 | -33 | 963.58 | 3 235 183.24 |
| L2 | -34 | 288.82 | 3 235 036.09 | R2 | -34 | 289.07 | 3 235 098.05 |
| L3 | -34 | 578.10 | 3 234 960.38 | R3 | -34 | 593.29 | 3 235 018.42 |
| L4 | -34 | 699.09 | 3 234 934.89 | R4 | -34 | 708.61 | 3 234 994.13 |
| L5 | -34 | 821.98 | 3 234 921.18 | R5 | -34 | 825.74 | 3 234 981.07 |
| L6 | -34 | 923.94 | 3 234 918.85 | R6 | -34 | 943.58 | 3 234 979.37 |
| L7 | -34 | 936.97 | 3 234 919.14 | R7 | -35 | 061.04 | 3 234 989.05 |
| L8 | -35 | 068.85 | 3 234 929.56 | R8 | -35 | 550.08 | 3 235 053.27 |
| L9 | -35 | 331.84 | 3 234 964.09 | R9 | -35 | 633.61 | 3 235 060.42 |
| L10 | -35 | 557.89 | 3 234 993.78 | R10 | -35 | 679.09 | 3 235 076.15 |
| L11 | -35 | 645.29 | 3 235 000.80 | R11 | -35 | 681.46 | 3 235 158.13 |
| L12 | -35 | 732.95 | 3 234 998.98 | R12 | -35 | 706.44 | 3 235 157.41 |
| L13 | -35 | 819.83 | 3 234 988.38 | R13 | -35 | 704.08 | 3 235 075.61 |
| L14 | -35 | 905.49 | 3 234 969.03 | R14 | -35 | 748.59 | 3 235 057.95 |
| L15 | -35 | 988.63 | 3 234 941.19 | R15 | -35 | 830.38 | 3 235 047.45 |
| L16 | -36 | 073.42 | 3 234 915.88 | R16 | -35 | 921.65 | 3 235 026.81 |
| L17 | -36 | 175.78 | 3 234 857.65 | R17 | -36 | 010.53 | 3 234 997.05 |
| L18 | -36 | 294.32 | 3 234 760.68 | R18 | -36 | 087.37 | 3 234 944.25 |
| L19 | -36 | 354.02 | 3 234 695.95 | R19 | -36 | 194.73 | 3 234 882.73 |
| L20 | -36 | 424.83 | 3 234 599.44 | R20 | -36 | 315.57 | 3 234 783.44 |
| L21 | -36 | 478.06 | 3 234 492.24 | R21 | -36 | 451.53 | 3 234 615.90 |
| L22 | -36 | 519.81 | 3 234 382.95 | R22 | -36 | 507.08 | 3 234 503.83 |
| L23 | -36 | 562.93 | 3 234 249.02 | R23 | -36 | 537.29 | 3 234 454.01 |
| L24 | -36 | 573.57 | 3 234 216.15 | R24 | -36 | 554.32 | 3 234 394.91 |
| L25 | -36 | 608.93 | 3 234 130.70 | R25 | -36 | 607.62 | 3 234 229.36 |
| L26 | -36 | 655.32 | 3 234 046.81 | R26 | -36 | 659.29 | 3 234 101.03 |
| L27 | -36 | 745.35 | 3 233 928.88 | R27 | -36 | 771.44 | 3 233 946.64 |
| L28 | -36 | 809.16 | 3 233 816.91 | R28 | -36 | 811.44 | 3 233 877.12 |
| L29 | -36 | 845.77 | 3 233 704.44 | R29 | -36 | 838.49 | 3 233 828.94 |
| L30 | -36 | 881.90 | 3 233 554.96 | R30 | -36 | 876.79 | 3 233 710.29 |
| L31 | -36 | 950.44 | 3 233 414.35 | R31 | -36 | 911.18 | 3 233 564.48 |
| L32 | -37 | 050.52 | 3 233 298.33 | R32 | -36 | 976.67 | 3 233 432.16 |
| L33 | -37 | 113.97 | 3 233 248.04 | R33 | -37 | 073.08 | 3 233 320.37 |
| L34 | -37 | 203.02 | 3 233 196.16 | R34 | -37 | 132.15 | 3 233 274.08 |
| L35 | -37 | 228.89 | 3 233 185.86 | R35 | -37 | 215.16 | 3 233 225.24 |
| L36 | -37 | 293.87 | 3 233 161.48 | R36 | -37 | 223.14 | 3 233 222.17 |
| L37 | -38 | 119.42 | 3 232 919.31 | R37 | -37 | 304.54 | 3 233 190.90 |
| L38 | -38 | 189.12 | 3 232 899.26 | R38 | -38 | 199.87 | 3 232 928.95 |
| L39 | -38 | 290.58 | 3 232 873.26 | R39 | -38 | 296.51 | 3 232 904.14 |
| L40 | -38 | 405.08 | 3 232 848.31 | R40 | -38 | 411.54 | 3 232 879.24 |
| L41 | -38 | 817.79 | 3 232 765.27 | R41 | -38 | 803.19 | 3 232 800.37 |
| L42 | -39 | 151.81 | 3 232 698.06 | R42 | -39 | 161.06 | 3 232 728.31 |
| L43 | -39 | 568.81 | 3 232 610.52 | R43 | -39 | 573.80 | 3 232 649.30 |
| L44 | -39 | 861.47 | 3 232 548.57 | R44 | -39 | 887.18 | 3 232 578.86 |
| L45 | -39 | 922.93 | 3 232 535.56 | R45 | -39 | 936.49 | 3 232 564.97 |
| L46 | -40 | 006.24 | 3 232 496.80 | R46 | -40 | 021.59 | 3 232 526.64 |
| L47 | -40 | 069.71 | 3 232 457.46 | R47 | -40 | 088.55 | 3 232 484.54 |
| L48 | -40 | 124.98 | 3 232 412.24 | R48 | -40 | 147.62 | 3 232 435.63 |
| L49 | -40 | 190.46 | 3 232 345.77 | R49 | -40 | 212.20 | 3 232 369.28 |
| L50 | -40 | 354.46 | 3 232 174.12 | R50 | -40 | 368.15 | 3 232 208.12 |
| L51 | -40 | 484.12 | 3 232 040.22 | R51 | -40 | 507.77 | 3 232 063.53 |

| | | | | |
|-------|---|-----|---|----------|
| Vel | 4 | Van | 5 | P1235/23 |
| Sheet | | of | | |

| PADRESERWE KOÖRDINATE / ROAD RESERVE CO-ORDINATES | | | | | | |
|---|------------|-------|--------|----------------------------|------------|--------------|
| LINKERKANT/LEFT HAND SIDE | | | | REGTERKANT/RIGHT HAND SIDE | | |
| | Y | X | WG 27° | | Y | X |
| L52 | -40 575.84 | 3 231 | 959.61 | R52 | -40 596.67 | 3 231 984.34 |
| L53 | -40 682.30 | 3 231 | 892.43 | R53 | -40 697.19 | 3 231 920.23 |
| L54 | -40 795.32 | 3 231 | 843.71 | R54 | -40 806.50 | 3 231 873.03 |
| L55 | -40 915.06 | 3 231 | 813.12 | R55 | -40 922.11 | 3 231 843.76 |
| L56 | -41 023.49 | 3 231 | 801.68 | R56 | -41 060.14 | 3 231 833.91 |
| L57 | -41 027.15 | 3 231 | 801.75 | R57 | -41 188.79 | 3 231 847.32 |
| L58 | -41 060.52 | 3 231 | 802.41 | R58 | -41 291.07 | 3 231 872.26 |
| L59 | -41 193.56 | 3 231 | 816.27 | R59 | -41 792.15 | 3 232 007.12 |
| L60 | -41 313.10 | 3 231 | 848.64 | R60 | -42 100.00 | 3 232 089.53 |
| L61 | -41 811.64 | 3 231 | 980.01 | R61 | -42 213.74 | 3 232 127.81 |
| L62 | -42 108.11 | 3 232 | 059.21 | R62 | -42 320.88 | 3 232 180.64 |
| L63 | -42 227.94 | 3 232 | 099.73 | R63 | -42 395.76 | 3 232 224.77 |
| L64 | -42 284.28 | 3 232 | 127.54 | R64 | -42 401.85 | 3 232 229.29 |
| L65 | -42 337.58 | 3 232 | 153.85 | R65 | -42 854.80 | 3 232 621.31 |
| L66 | -42 412.52 | 3 232 | 202.56 | R66 | -42 877.27 | 3 232 625.10 |
| L67 | -42 485.11 | 3 232 | 260.40 | R67 | -43 062.71 | 3 232 654.54 |
| L68 | -42 537.42 | 3 232 | 304.62 | R68 | -43 293.58 | 3 232 679.37 |
| L69 | -42 604.36 | 3 232 | 361.32 | R69 | -43 415.34 | 3 232 704.67 |
| L70 | -42 742.14 | 3 232 | 482.20 | R70 | -43 523.73 | 3 232 752.82 |
| L71 | -42 808.68 | 3 232 | 528.84 | R71 | -43 620.45 | 3 232 821.53 |
| L72 | -42 837.66 | 3 232 | 549.18 | R72 | -43 716.05 | 3 232 907.70 |
| L73 | -42 943.25 | 3 232 | 596.44 | R73 | -43 853.15 | 3 232 988.81 |
| L74 | -43 066.08 | 3 232 | 623.19 | R74 | -43 896.26 | 3 232 995.38 |
| L75 | -43 301.93 | 3 232 | 648.69 | R75 | -43 974.69 | 3 232 999.36 |
| L76 | -43 424.06 | 3 232 | 674.44 | R76 | -44 016.48 | 3 233 002.84 |
| L77 | -43 536.21 | 3 232 | 723.81 | R77 | -44 114.60 | 3 232 987.60 |
| L78 | -43 637.95 | 3 232 | 795.37 | | | |
| L79 | -43 735.25 | 3 232 | 882.81 | | | |
| L80 | -43 834.92 | 3 232 | 939.20 | | | |
| L81 | -43 924.19 | 3 232 | 963.41 | | | |
| L82 | -44 060.80 | 3 232 | 964.47 | | | |
| L83 | -44 087.25 | 3 232 | 959.62 | | | |
| L84 | -44 109.76 | 3 232 | 955.08 | | | |

| | | | | |
|-----------|---|--------|---|----------|
| Vel Sheet | 5 | Van of | 5 | P1235/23 |
|-----------|---|--------|---|----------|