
GOVERNMENT NOTICES • GOEWERMENTSKENNISGEWINGS

DEPARTMENT OF TRANSPORT

NO. 4426

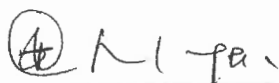
23 February 2024

**THE SOUTH AFRICAN NATIONAL ROADS
AGENCY SOC LIMITED**Registration No: 1998/009584/30

DECLARATION AMENDMENT OF NATIONAL ROAD R31 SECTION 6

AMENDMENT OF DECLARATION No. 2670 OF 2022.

By virtue of section 40(1)(b) of the South African National Roads Agency Limited and the National Roads Act 1998 (Act No. 7 of 1998), I hereby amend Declaration No. 2670 of 2022 by substituting paragraph C of the Schedule, being the descriptive declaration of the route from Daniëlskuil Turnoff up to Delporthoogte, with the accompanying sheets 1 to 19 of Plan No. P1237/23.

(National Road R31 Section 6: Daniëlskuil Turnoff – Delporthoogte)**MINISTER OF TRANSPORT**

DEPARTEMENT VAN VERVOER

NO. 4426

23 Februarie 2024

**DIE SUID-AFRIKAANSE NASIONALE
PADAGENTSKAP MSB BEPERK**

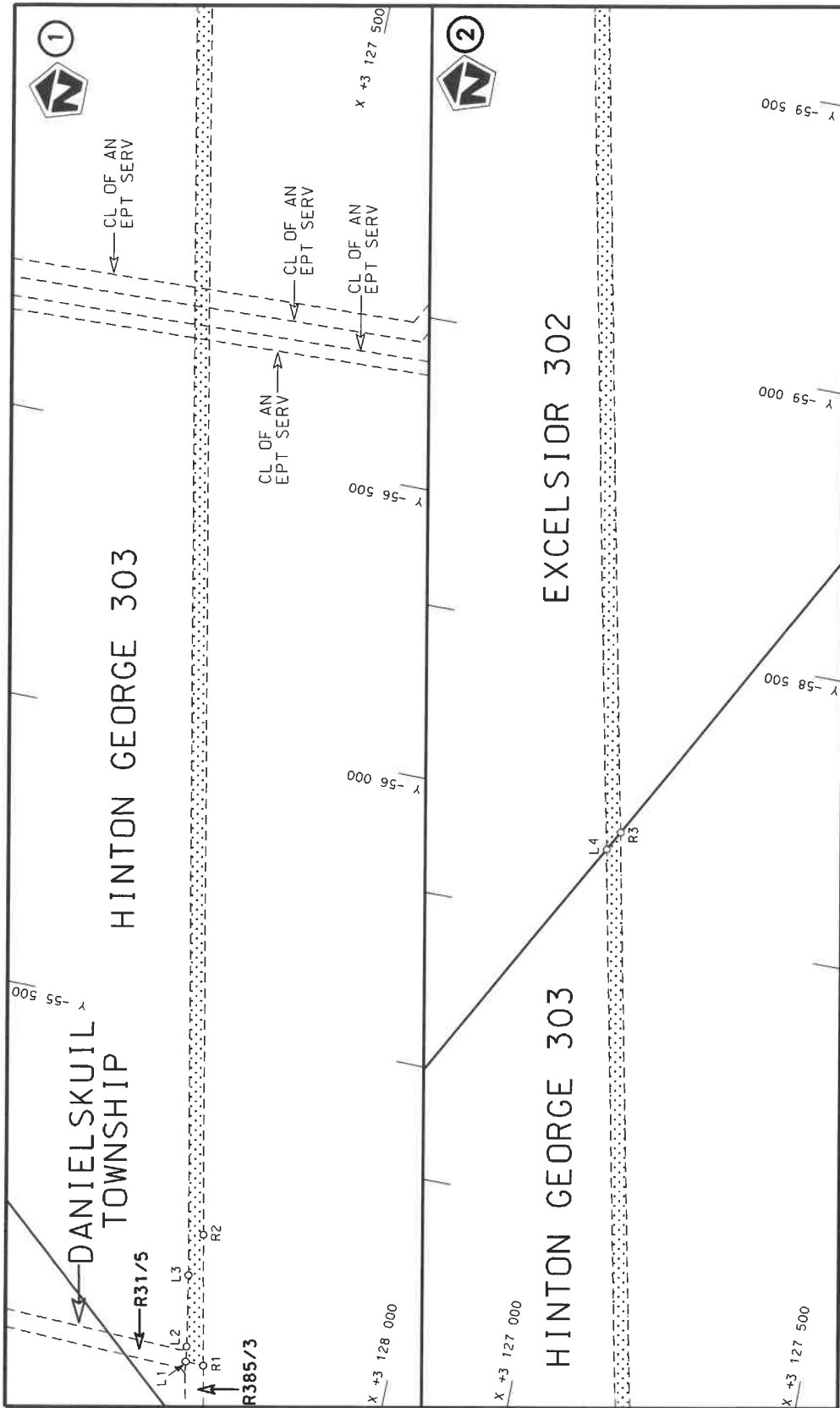
Registrasie No: 1998/009584/30

VERKLARING WYSIGING VAN NASIONALE PAD R31 SEKSIE 6

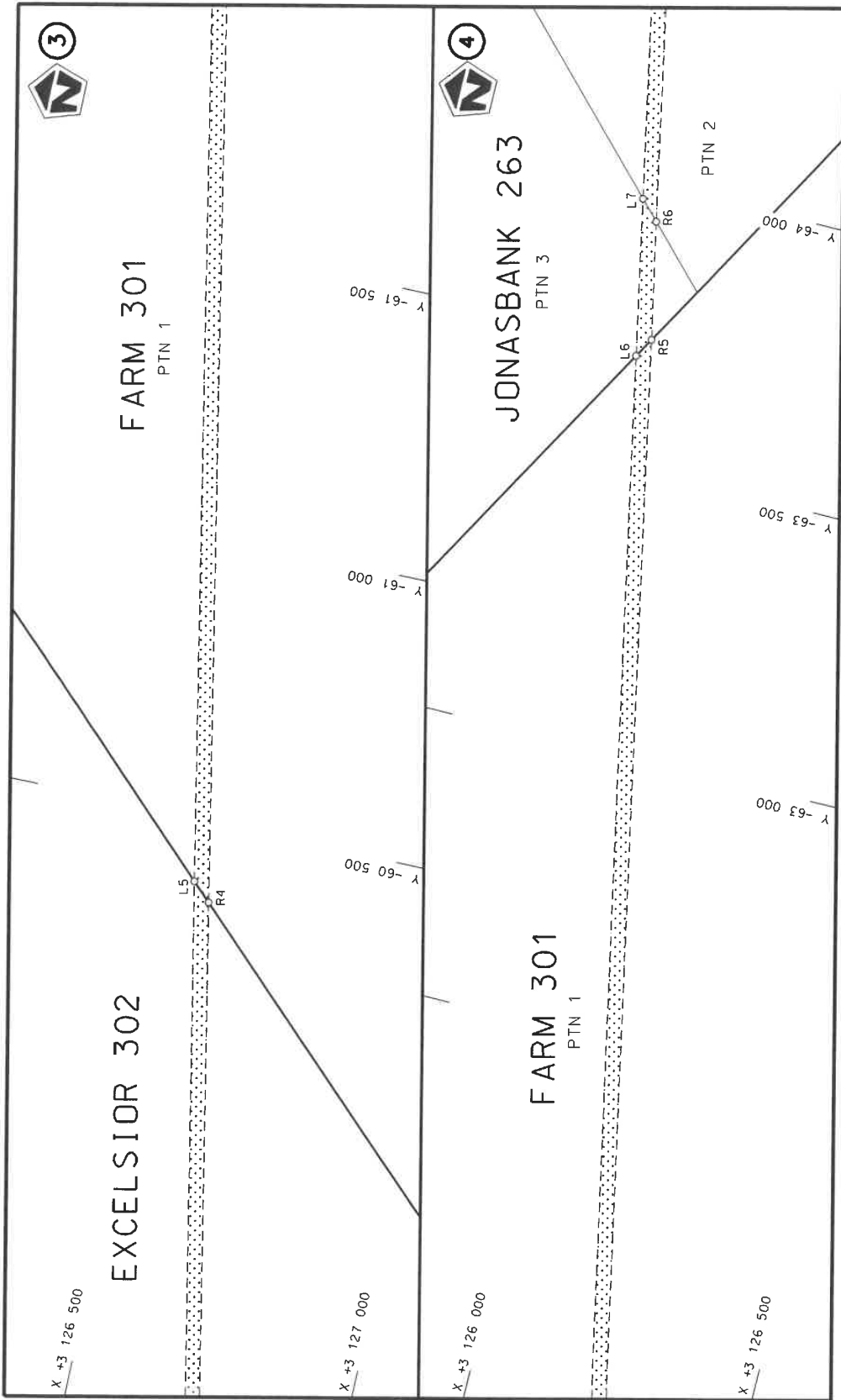
WYSIGING VAN VERKLARING No. 2670 VAN 2022.

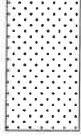
Kragtens Artikel 40(1)(b) van die Suid-Afrikaanse Nasionale Padagentskap Beperk en Nasionale Paaie Wet 1998 (Wet No. 7 van 1998), wysig ek hiermee Verklaring No. 2670 van 2022 deur paragraaf C van die Skedule te vervang, synde die gedeelte van die beskrywende verklaring van die pad vanaf Daniëlskuil Afdraai tot by Delporthoogte, met bygaande velle 1 tot 19 van Plan No. P1237/23.

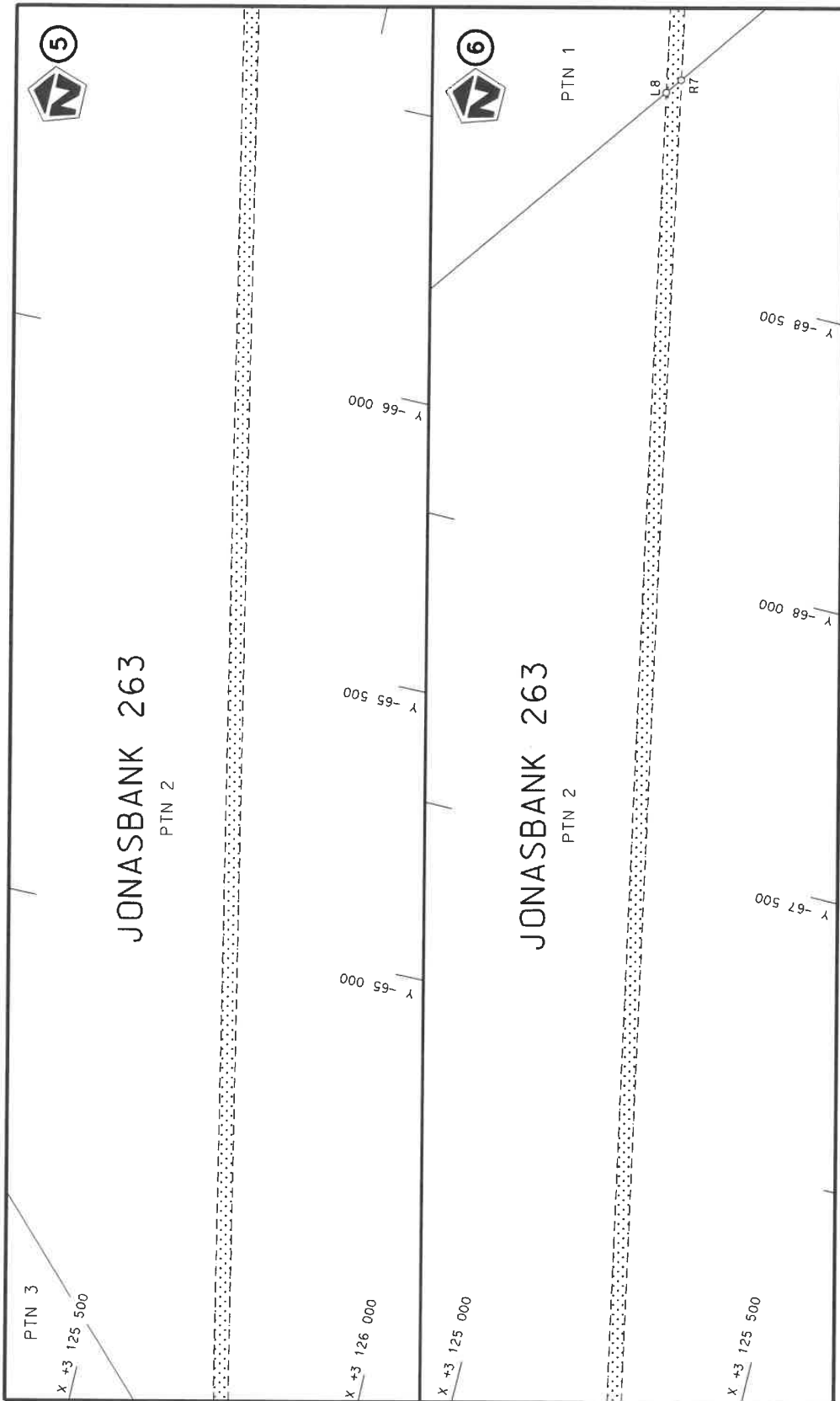
(Nasionale Pad R31 Seksie 6: Daniëlskuil Afdraai – Delporthoogte)
MINISTER VAN VERVOER



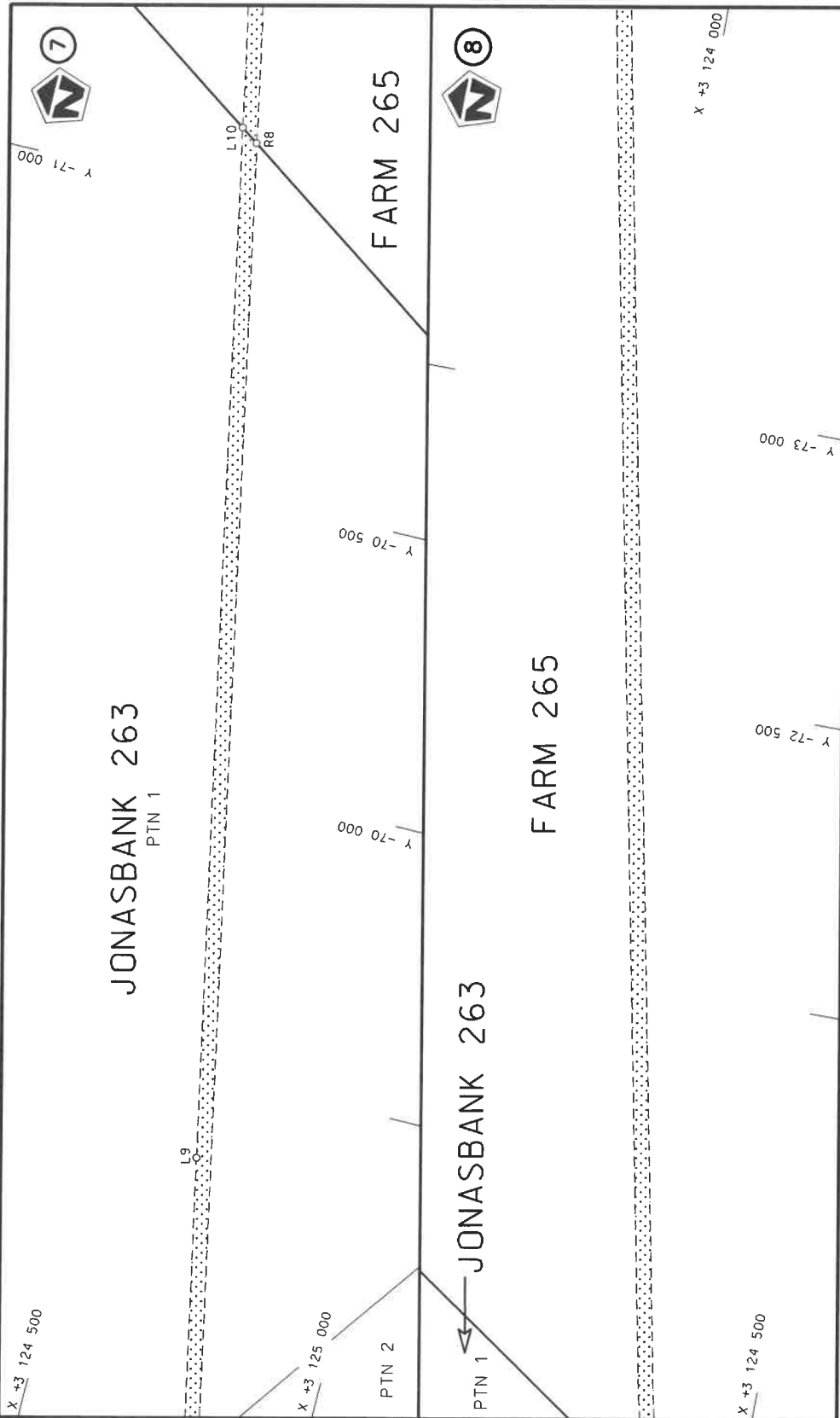
<p>Die Suid Afrikaanse Nasionale Padagentskap MSB Bpk The South African National Roads Agency SOC Ltd</p>	<p>Die figuur getoon The figure shown</p>	<p>stel die padreserwe voor van 'n gedeelte represents the road reserve of a portion van Nasionale Roete R31 Sektie of National Route R31 Section</p>	<p>Vel Sheet 1 of 19 Plan P1237/23</p>
---	---	---	--

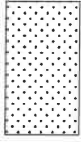


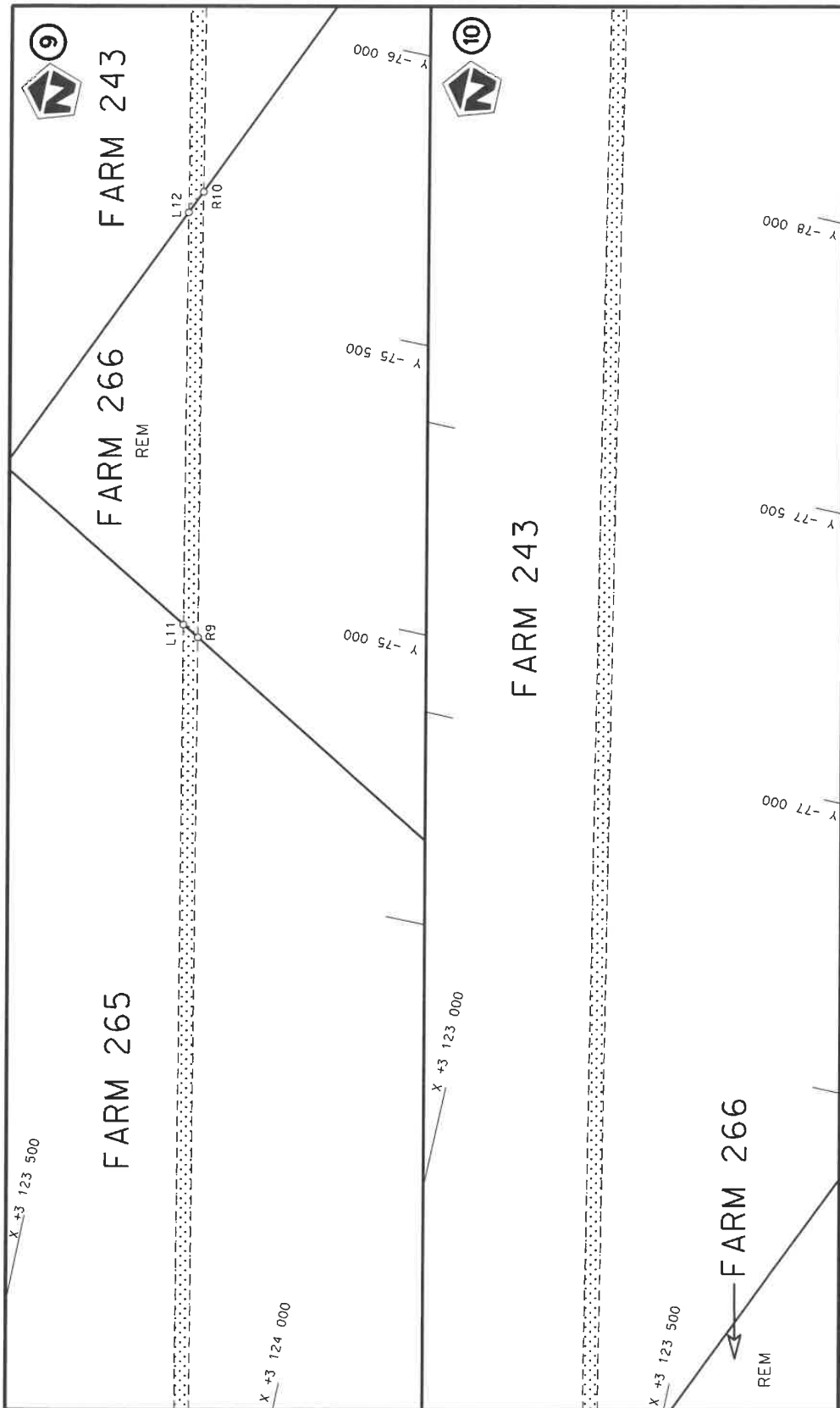
<p>Die Suid Afrikaanse Nasionale Padagentskap MSB Bpk The South African National Roads Agency SOC Ltd</p>	<p>Die figuur getoon The figure shown</p> 	<p>stel die padreserwe voor van 'n gedeelte represents the road reserve of a portion van Nasionale Roete R31 of National Route R31</p> <p>Seksie Section R31 6</p>	<p>Vel Sheet 2 of 19 Plan P1237/23</p>
---	---	--	--

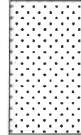


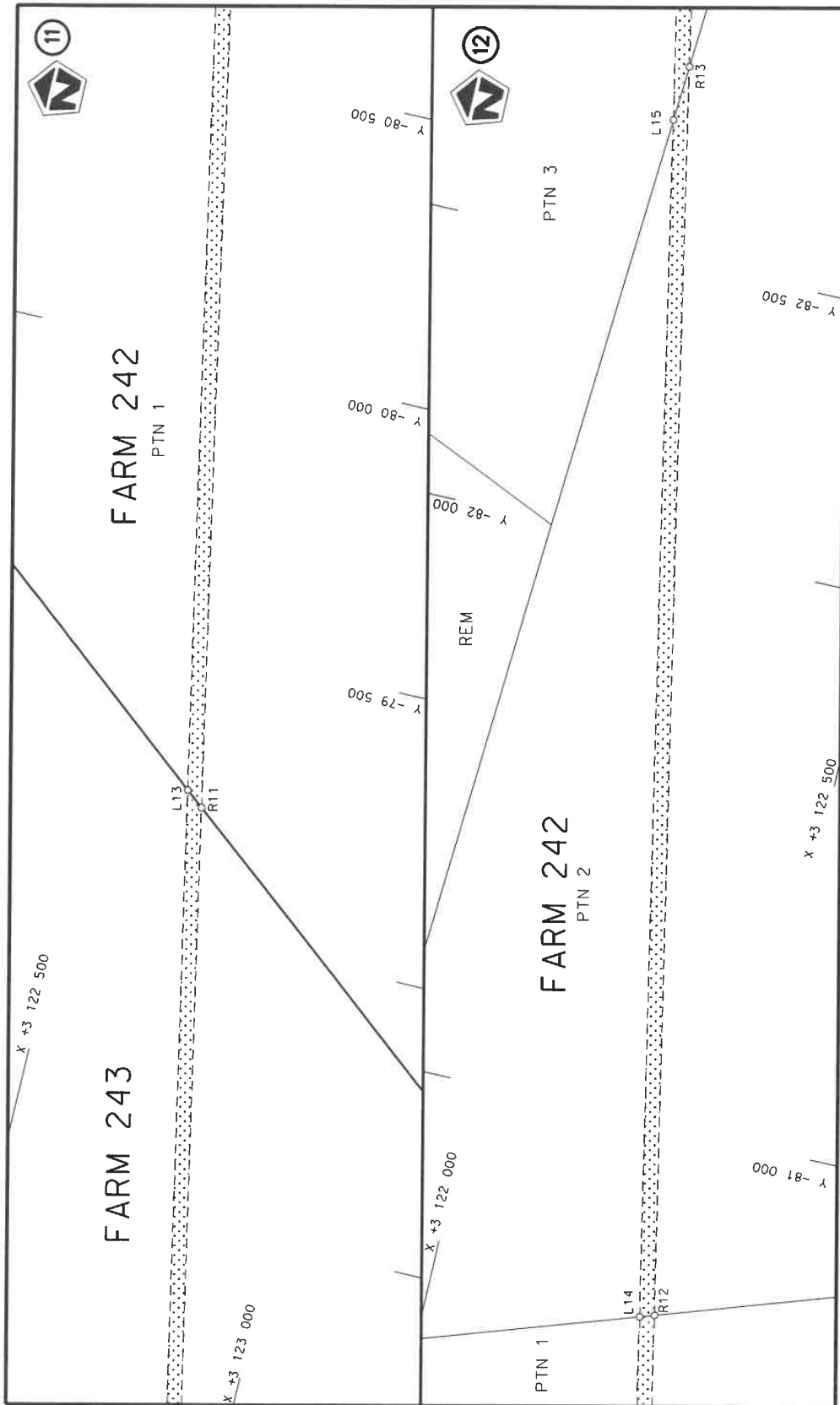
<p>Die Suid-Afrikaanse Nasionale Padagentskap MSB Bpk The South African National Roads Agency SOC Ltd</p>	<p>Die figuur getoon The figure shown</p>	<p>stel die padreserwe voor van 'n gedeelte represents the road reserve of a portion van Nasionale Roete R31 of National Route R31</p> <p>Seksie Section</p> <p>6</p>	<p>Vel Sheet</p> <p>3 of 19</p> <p>Plan P1237/23</p>
---	---	---	--



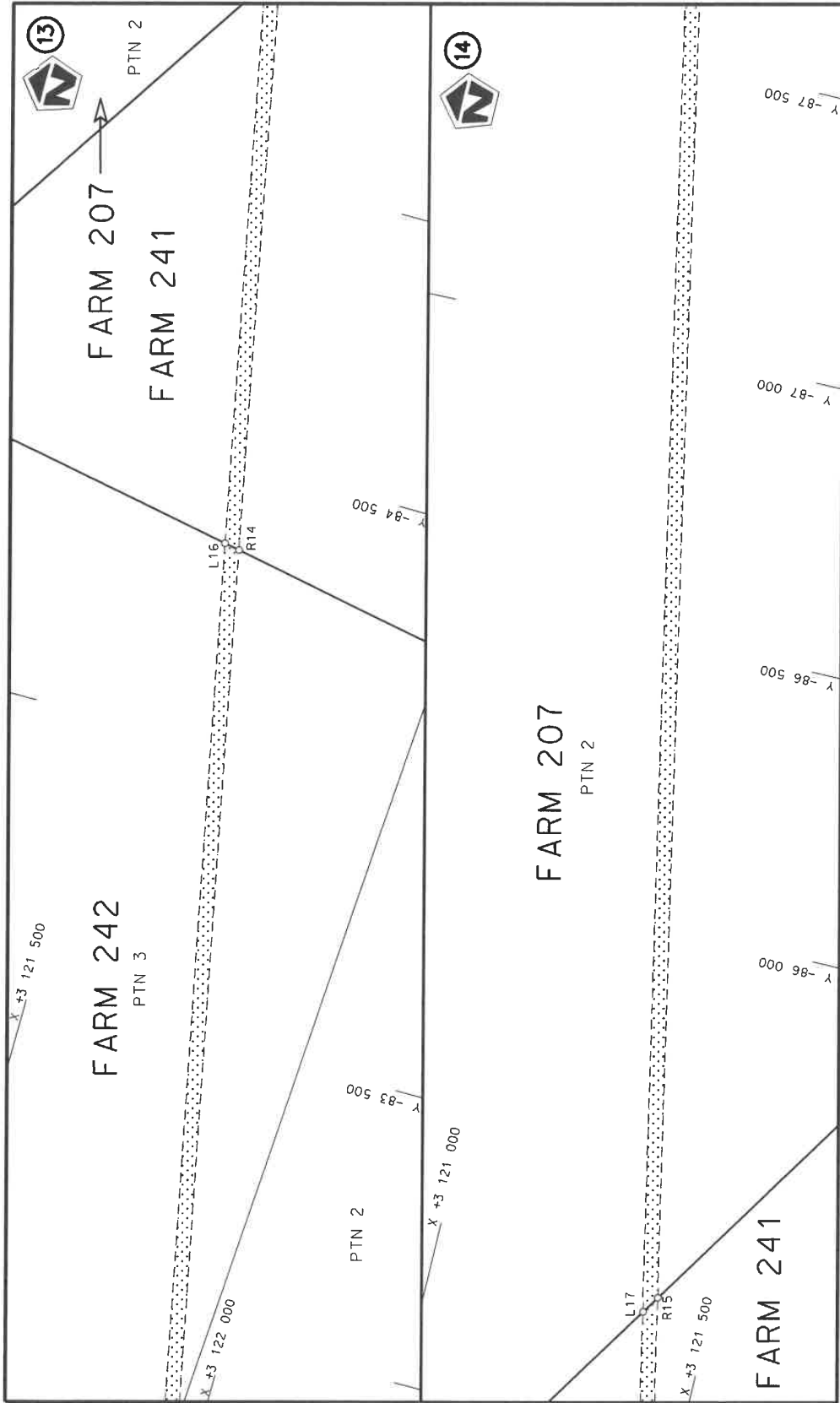
<p>Die Suid Afrikaanse Nasionale Padogentskap MSB Bpk The South African National Roads Agency SOC Ltd</p>	<p>Die figuur getoon The figure shown</p>		<p>steeldie padreserwe voor van 'n gedeelte represents the road reserve of a portion van Nasionale Roete R31 of National Route R31 Seksie Section</p>	<p>Vel Sheet 4 of 19 Plan P1237/23</p>
---	---	---	---	--



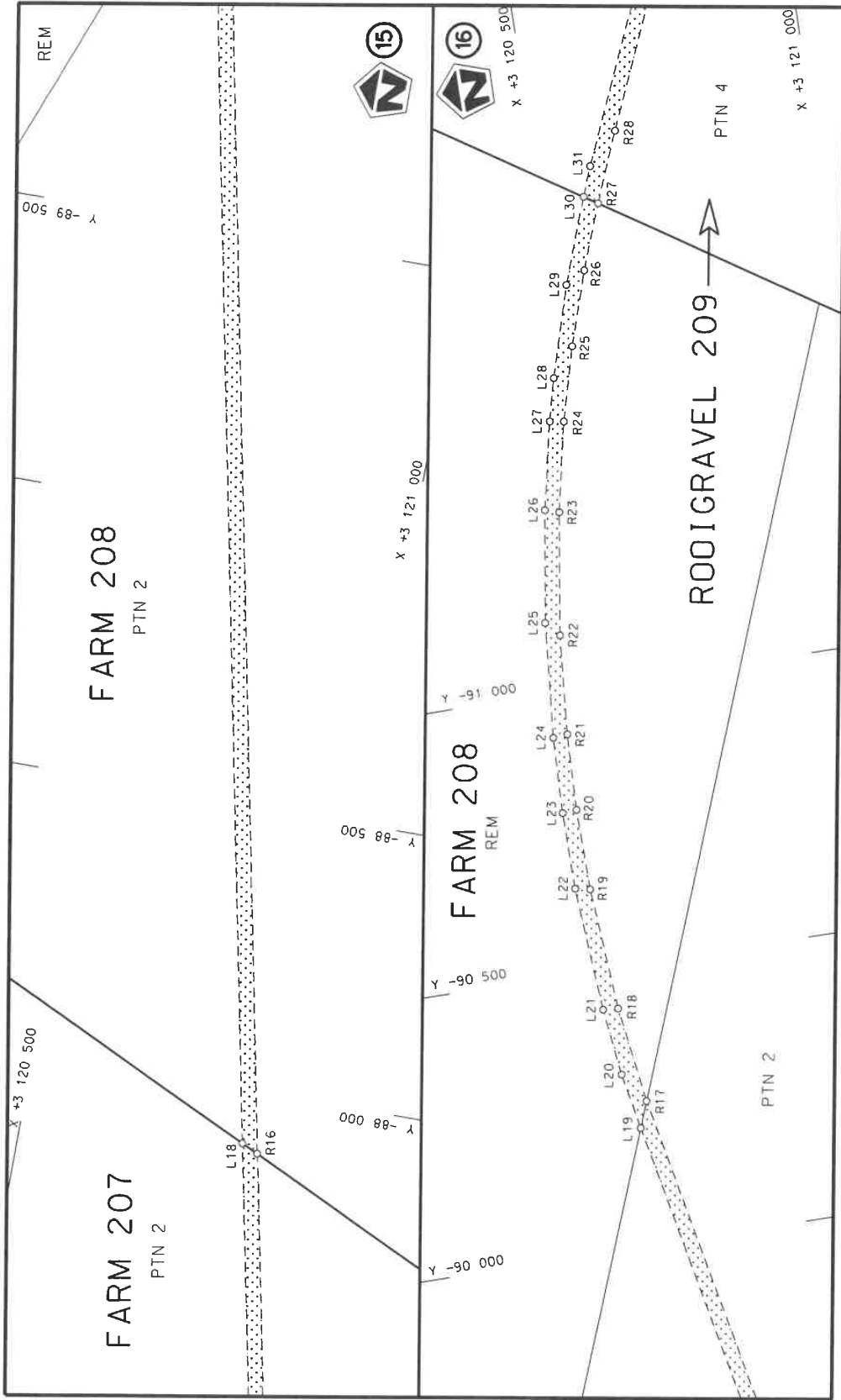
Die Suid Afrikaanse Nasionale Padagentskap MSB Bpk The South African National Roads Agency SOC Ltd	Die figuur getoon The figure shown		steldie padreserwe voor van 'n gedeelte represents the road reserve of a portion van Nasionale Roete R31 Seksie of National Route Section	Vel Sheet 5 of 19
			Plan P1237/23	

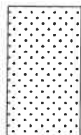


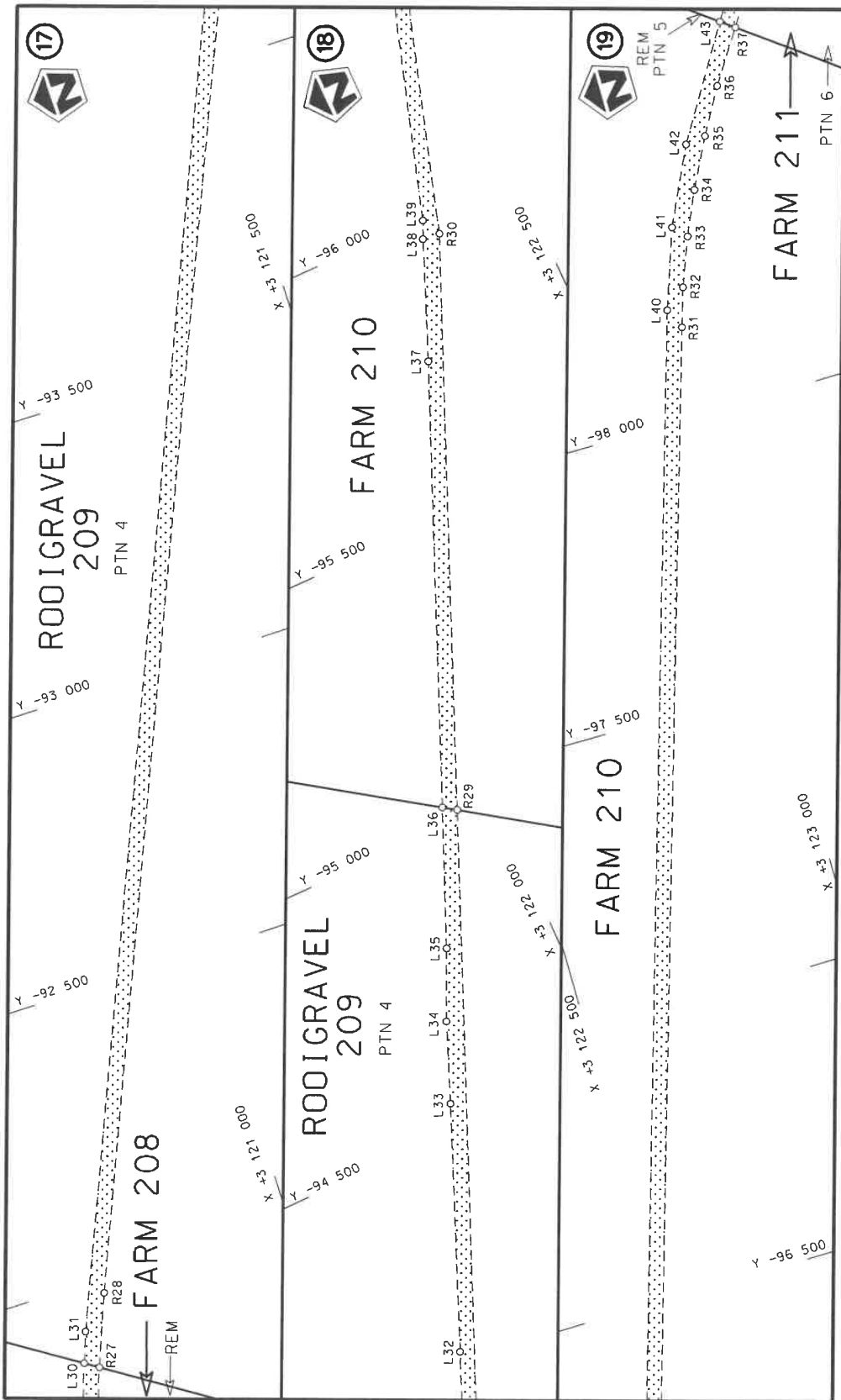
<p>Die Suid-Afrikaanse Nasionale Padagentskap MSB Bpk The South African National Roads Agency SOC Ltd</p>	<p>Die figuur getoon The figure shown</p>	<p>stel die padreserwe voor van 'n gedeelte represents the road reserve of a portion van Nasionale Roete R31 Seksie of National Route R31 Section</p>	<p>Vel Sheet 6 of 19 Plan P1237/23</p>
---	---	---	--




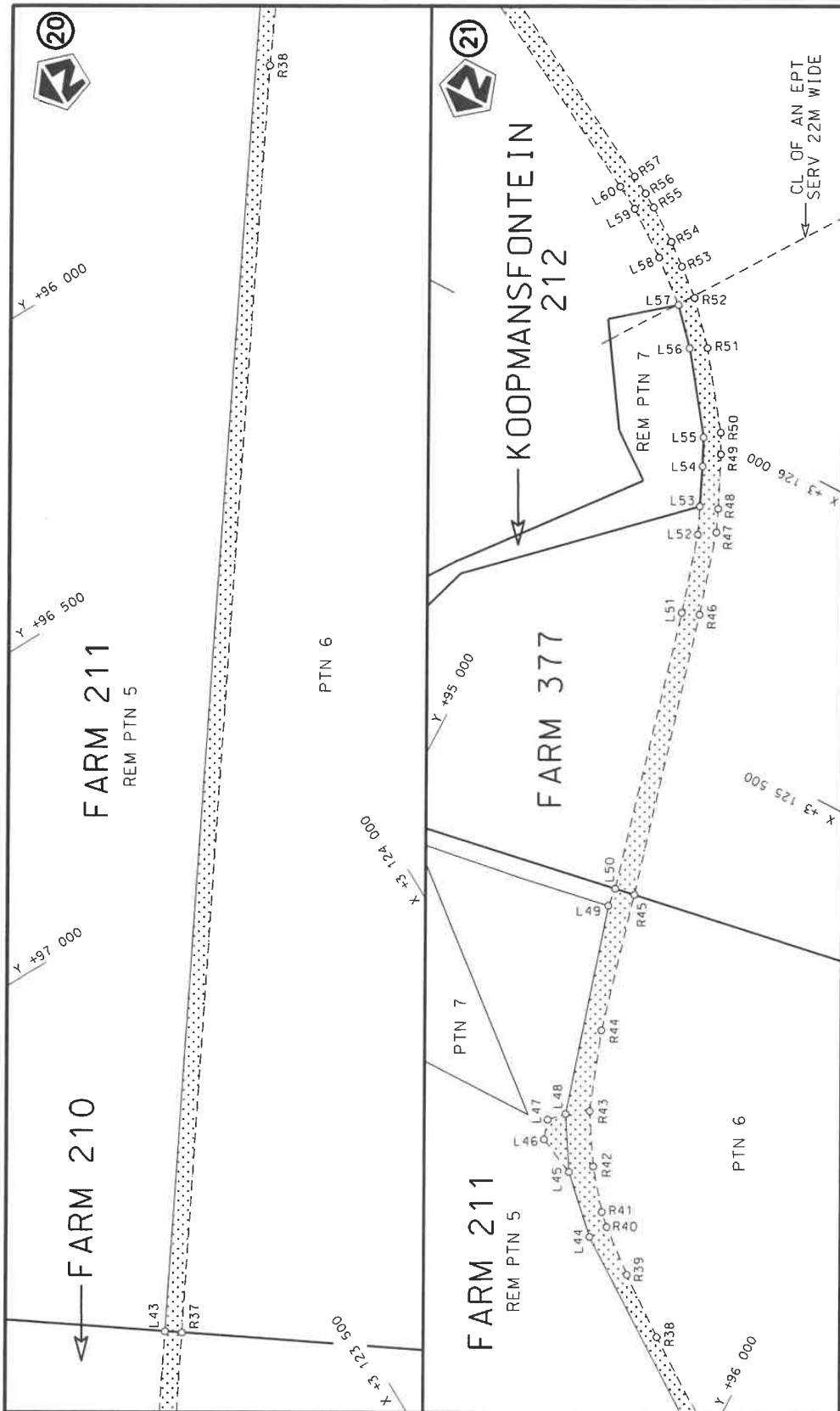
Die Suid Afrikaanse Nasionale Padagentskap MSB Bpk The South African National Roads Agency SOC Ltd	Die figuur getoon The figure shown	steldie podreserwe voor van 'n gedeelte represents the road reserve of a portion van Nasionale Roete R31 Sektie of National Route R31 Section	Vel Sheet 7 van of 19 Plan P1237/23
---	---------------------------------------	--	--



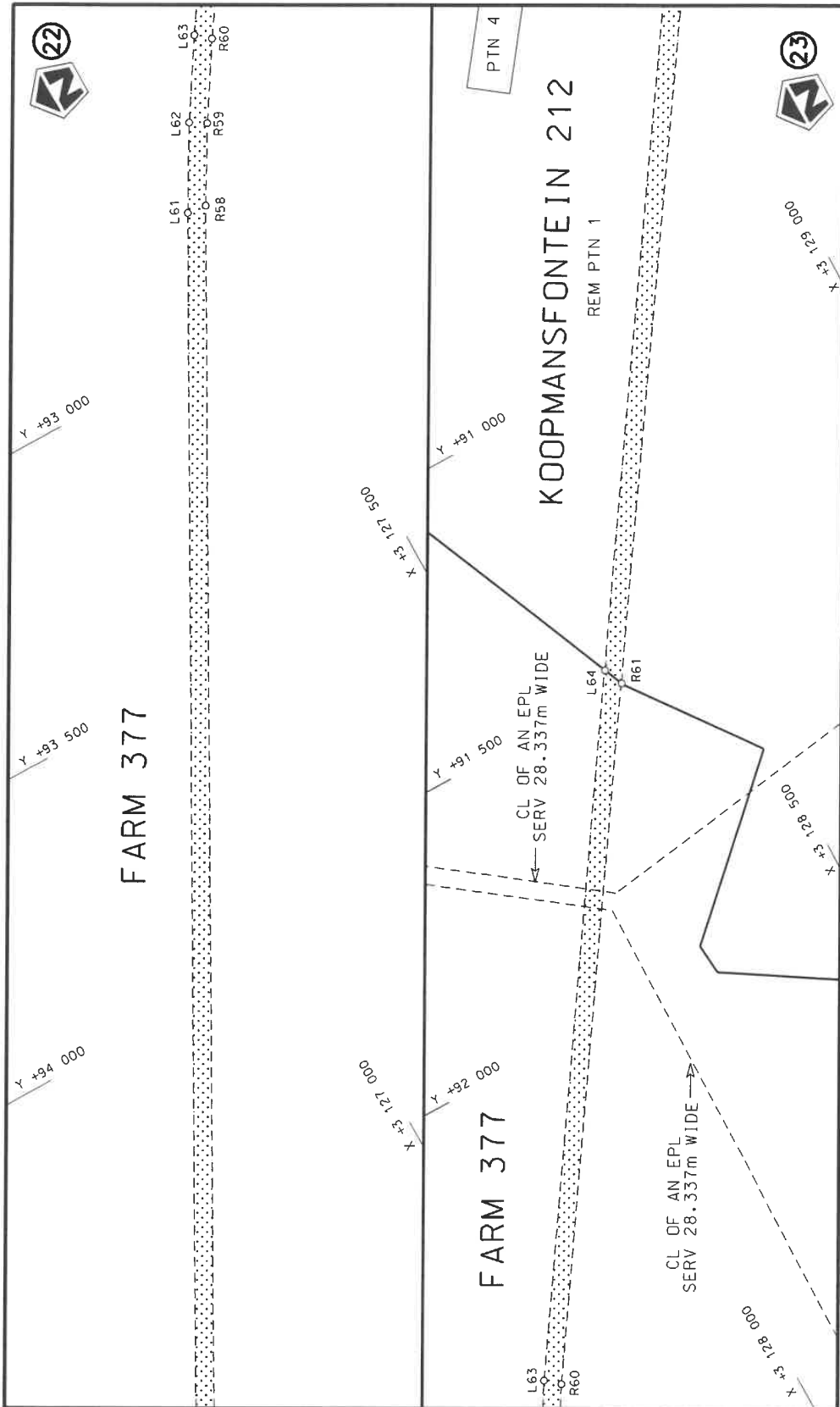
Die Suid Afrikaanse Nasionale Padagentskap MSB Bpk The South African National Roads Agency SOC Ltd	Die figuur getoon The figure shown	 stel die padreserwe voor van 'n gedeelte represents the road reserve of a portion van Nasionale Roete R31 of National Route R31 Section	Vel Sheet 8 of 19 Plan P1237/23
---	---------------------------------------	--	------------------------------------

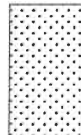


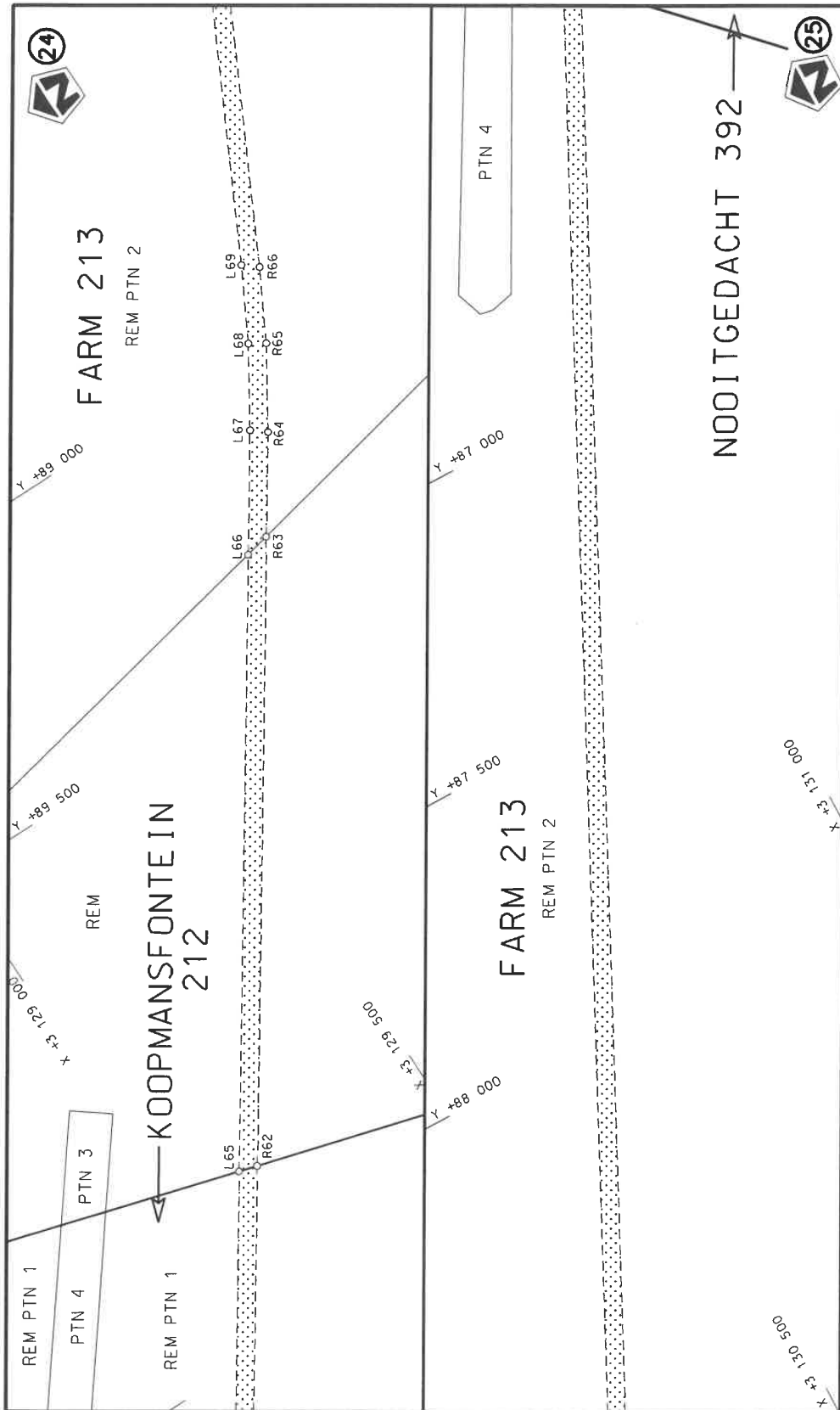
Die Suid Afrikaanse Nasionale Padagentskap MSB Bpk The South African National Roads Agency SOC Ltd	Die figuur getoon The figure shown	 steldie padreserwe voor van 'n gedeelte represents the road reserve of a portion van Nasionale Roete R31 of National Route R31 Section	Vel Sheet 9 of 19 Plan P1237/23
---	---------------------------------------	---	------------------------------------

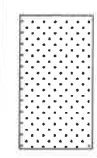


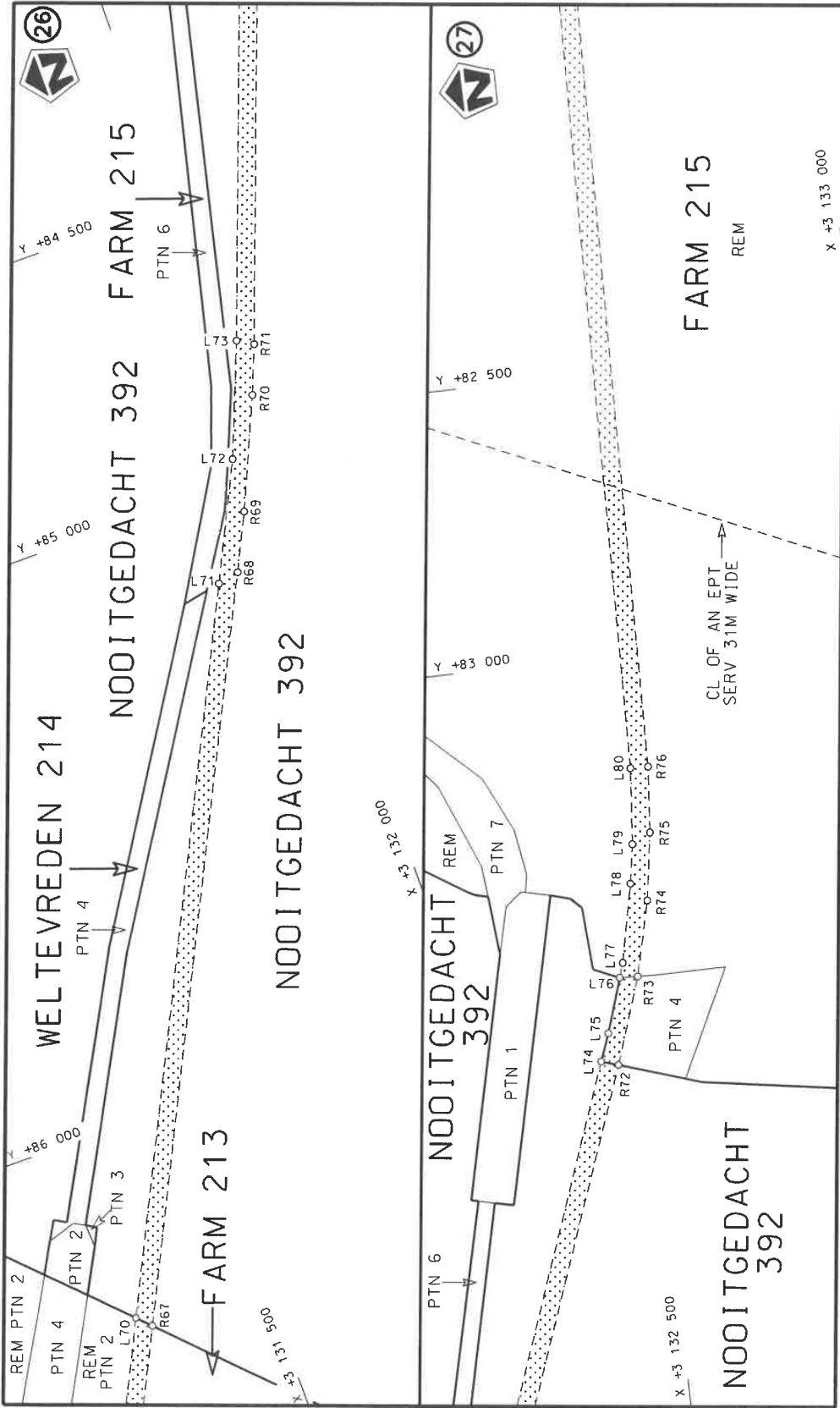
<p>Die Suid Afrikaanse Nasionale Padagentskap MSB Bpk The South African National Roads Agency SOC Ltd</p>	<p>Die figuur getoon The figure shown</p>	<p>stelt die podreserwe voor van 'n gedeelte represents the road reserve of a portion van Nasionale Roete R31 Seksie of National Route of Section</p>	<p>Vel Sheet 10 of 19 Plan P1237/23</p>
---	---	---	---




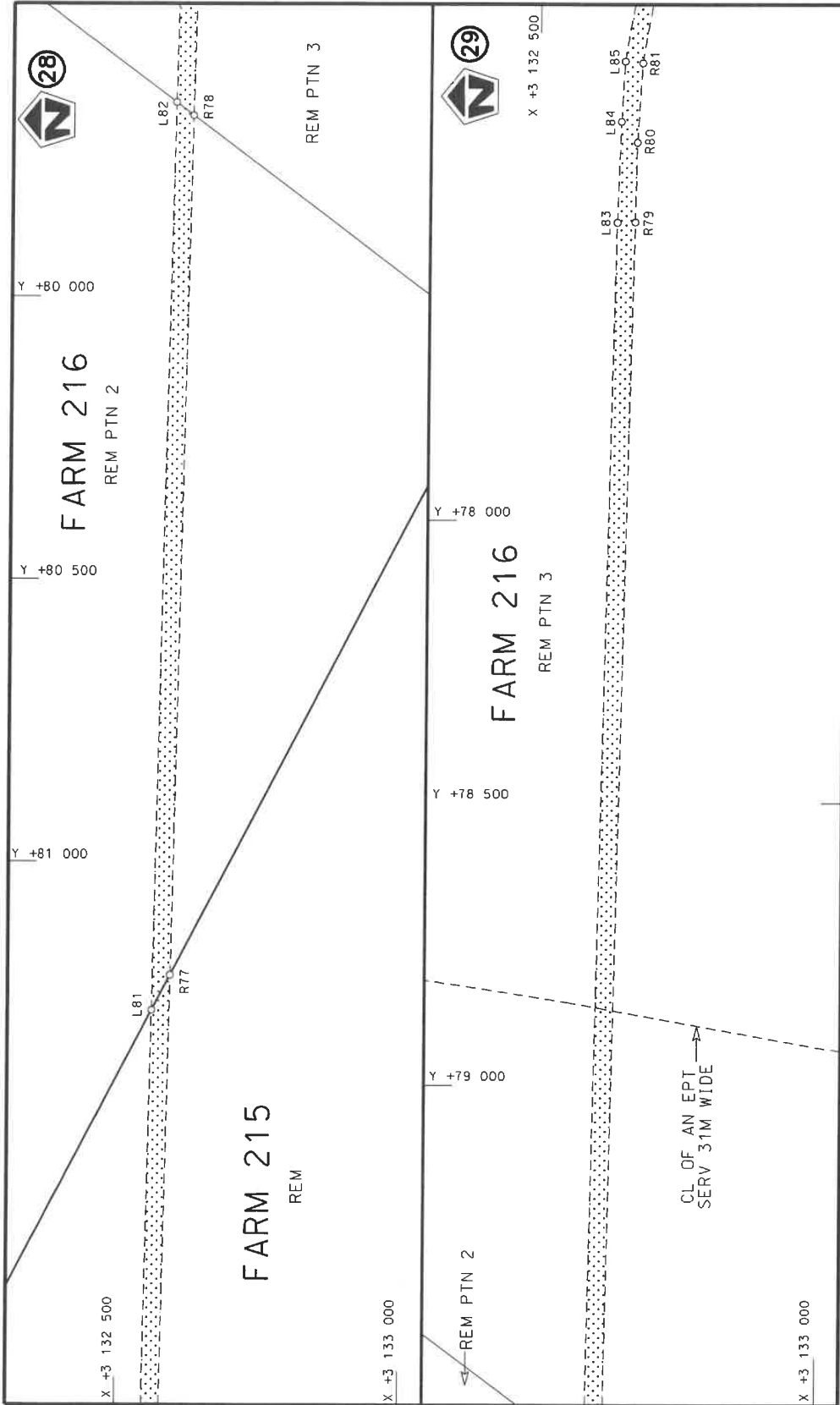
<p>Die Suid Afrikaanse Nasionale Padogentskap MSB Bpk The South African National Roads Agency SOC Ltd</p>	<p>Die figuur getoon The figure shown</p> 	<p>steeldie padreserwe voor van 'n gedeelte represents the road reserve of a portion von Nasionale Roete R31 Sektie 6 of National Route Section</p>	<p>Vel Sheet 11 of 19 Plan P1237/23</p>
---	---	---	---

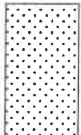


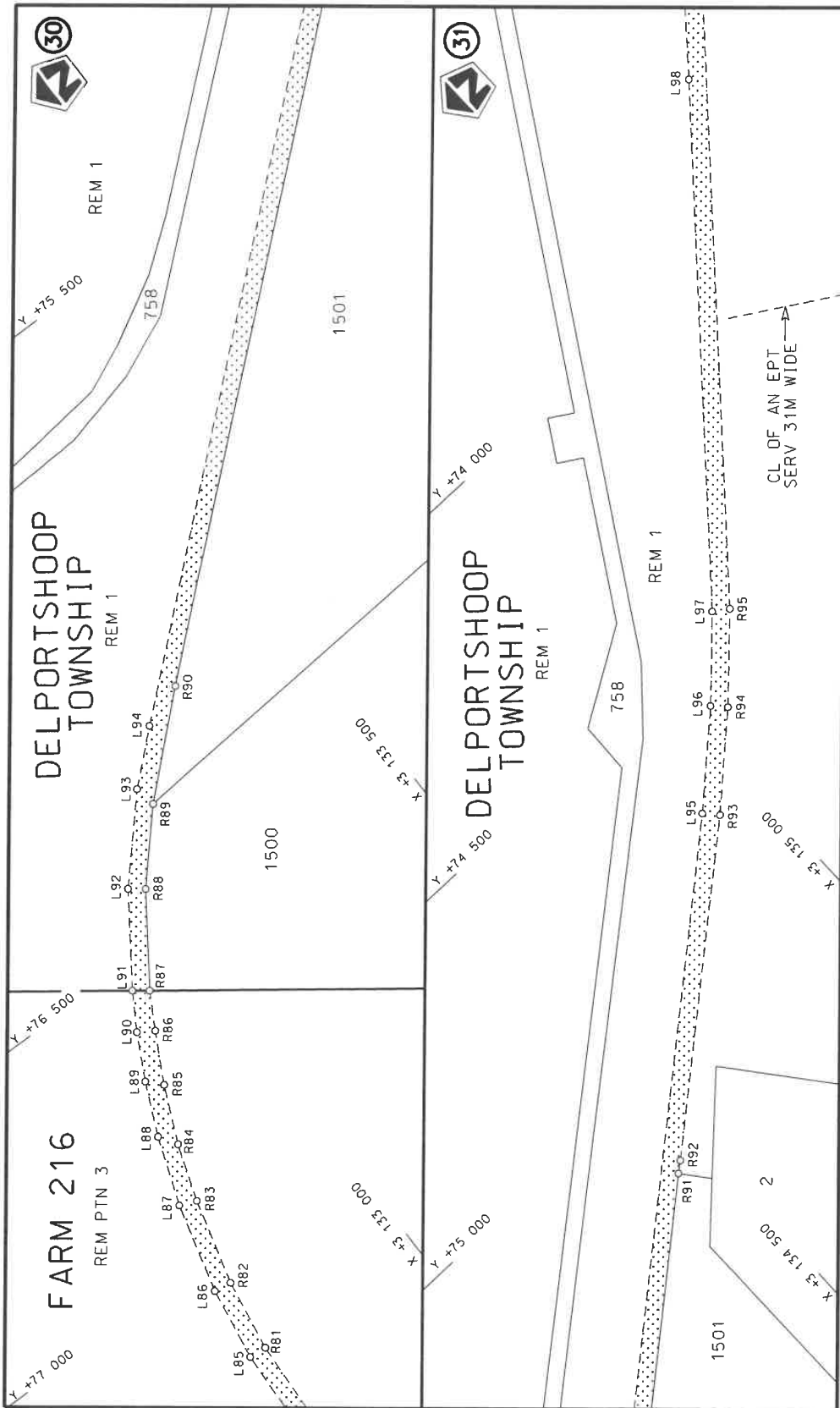
<p>Die Suid Afrikaanse Nasionale Padagentskap MSB Bpk The South African National Roads Agency SOC Ltd</p>	<p>Die figuur getoon The figure shown</p> 	<p>steldie padreserwe voor van 'n gedeelte represents the road reserve of a portion van Nasionale Roete R.31 Sektie 6 of National Route</p>	<p>Vel Sheet 12 of 19 Plan P1237/23</p>
---	---	---	---



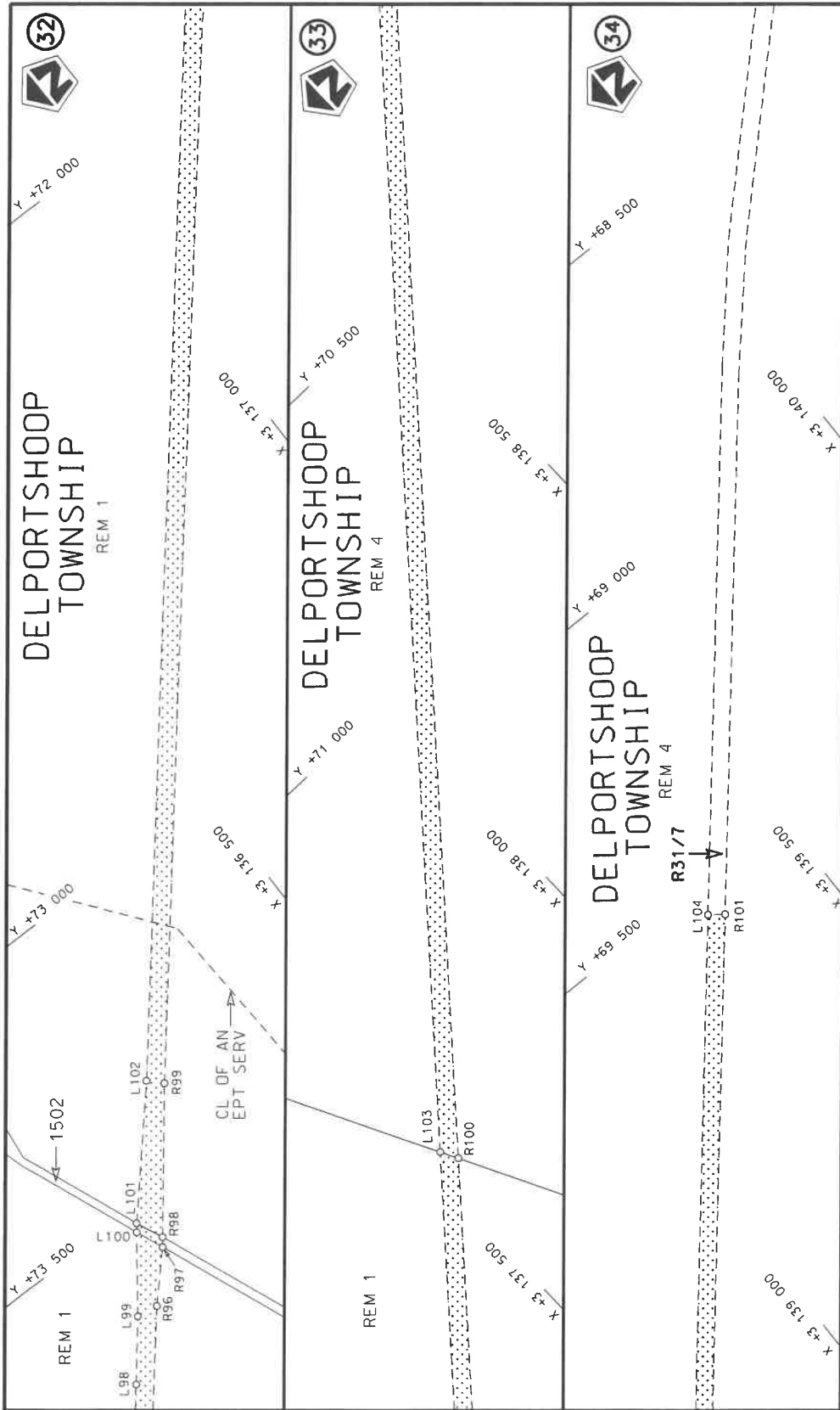
<p>Die Suid Afrikaanse Nasionale Padagentskap MSB Bpk The South African National Roads Agency SOC Ltd</p>	<p>Die figuur getoon The figure shown</p> 	<p>steldie padreserwe voor van 'n gedeelte represents the road reserve of a portion van Nasionale Roete R31 Saksie of National Route R31 Section</p>	<p>Vel Sheet 13 of 19 Plan P1237/23</p>
---	---	--	---



<p>Die Suid-Afrikaanse Nasionale Padagentskap MSB Bpk The South African National Roads Agency SOC Ltd</p>	<p>Die figuur getoon The figure shown</p> 	<p>stelt die padreserwe voor van 'n gedeelte represents the road reserve of a portion van Nasionale Roete R31 of National Route R31</p> <p>Seksie Section</p>	<p>Vel Sheet</p> <p>14 of</p> <p>19</p> <p>Plan P1237/23</p>
---	---	---	--



Die Suid-Afrikaanse Nasionale Padogenieskap MSB Bpk The South African National Roads Agency SOC Ltd	Die figuur getoon The figure shown		steldie padreserwe voor van 'n gedeelte represents the road reserve of a portion van Nasionale Roete R31 of National Route R31 Seksie Section 6	Vel Sheet 15 of 19 Plan P1237/23
--	---------------------------------------	--	--	--



<p>Die Suid Afrikaanse Nasionale Padagentskap MSB Bpk The South African National Roads Agency SOC Ltd</p>	<p>Die figuur getoon The figure shown</p>	<p>stelde padreserwe voor van 'n gedeelte represents the road reserve of a portion van Nasionale Roete R31 Sektie of National Route R31 Section</p>	<p>Vel Sheet 16 of 19 Plan P1237/23</p>
---	---	---	---

PADRESERWE KOÖRDINATE / ROAD RESERVE CO-ORDINATES											
LINKERKANT/LEFT HAND SIDE					REGTERKANT/RIGHT HAND SIDE						
	Y		X	WG23 ^a		Y		X			
L1	-54	904.32	3	127	644.08	R1	-54	903.74	3	127	675.47
L2	-54	930.80	3	127	640.00	R2	-55	130.44	3	127	628.27
L3	-55	055.04	3	127	617.05	R3	-58	166.74	3	127	006.79
L4	-58	132.72	3	126	988.03	R4	-60	358.25	3	126	559.08
L5	-60	389.79	3	126	526.11	R5	-63	730.24	3	125	869.57
L6	-63	696.17	3	125	849.90	R6	-63	936.40	3	125	826.41
L7	-63	970.28	3	125	793.79	R7	-68	852.11	3	124	821.00
L8	-68	824.29	3	124	800.66	R8	-71	103.76	3	124	360.13
L9	-69	353.34	3	124	692.39	R9	-74	911.69	3	123	580.97
L10	-71	124.44	3	124	329.83	R10	-75	682.36	3	123	423.09
L11	-74	928.55	3	123	551.37	R11	-79	221.30	3	122	698.11
L12	-75	641.35	3	123	405.23	R12	-80	669.75	3	122	401.59
L13	-79	246.18	3	122	667.02	R13	-82	838.90	3	121	957.57
L14	-80	661.48	3	122	376.96	R14	-84	350.08	3	121	648.24
L15	-82	740.78	3	121	951.53	R15	-85	358.24	3	121	441.84
L16	-84	355.22	3	121	621.22	R16	-87	889.72	3	120	923.70
L17	-85	327.85	3	121	422.10	R17	-90	256.33	3	120	442.01
L18	-87	903.35	3	120	894.83	R18	-90	427.48	3	120	417.17
L19	-90	210.37	3	120	424.37	R19	-90	644.95	3	120	400.96
L20	-90	310.11	3	120	405.45	R20	-90	788.91	3	120	398.61
L21	-90	429.34	3	120	390.80	R21	-90	924.48	3	120	403.11
L22	-90	650.57	3	120	375.01	R22	-91	100.59	3	120	417.18
L23	-90	787.18	3	120	373.63	R23	-91	317.64	3	120	449.12
L24	-90	922.32	3	120	377.62	R24	-91	477.10	3	120	482.70
L25	-91	126.69	3	120	394.63	R25	-91	607.04	3	120	517.41
L26	-91	325.14	3	120	424.60	R26	-91	737.24	3	120	558.59
L27	-91	480.96	3	120	458.03	R27	-91	850.67	3	120	599.99
L28	-91	556.18	3	120	476.73	R28	-91	974.23	3	120	649.42
L29	-91	716.47	3	120	523.69	R29	-95	016.29	3	121	933.92
L30	-91	866.01	3	120	576.57	R30	-95	961.63	3	122	333.46
L31	-91	918.76	3	120	596.83	R31	-98	158.67	3	123	006.86
L32	-94	136.47	3	121	534.93	R32	-98	226.73	3	123	028.08
L33	-94	545.51	3	121	704.72	R33	-98	311.48	3	123	060.78
L34	-94	681.66	3	121	759.42	R34	-98	387.67	3	123	095.03
L35	-94	799.93	3	121	814.19	R35	-98	474.79	3	123	139.13
L36	-95	031.33	3	121	911.96	R36	-98	554.33	3	123	184.63
L37	-95	763.59	3	122	221.36	R37	-98	645.24	3	123	243.68
L38	-95	965.25	3	122	303.45						
L39	-95	995.40	3	122	317.12						
L40	-98	195.34	3	122	990.39						
L41	-98	334.60	3	123	038.54						
L42	-98	469.67	3	123	102.70						
L43	-98	662.94	3	123	219.95						

Vel Sheet	17	Van of	19	P1237/23
-----------	----	--------	----	----------

PADRESERWE KOÖRDINATE / ROAD RESERVE CO-ORDINATES							
LINKERKANT/LEFT HAND SIDE				REGTERKANT/RIGHT HAND SIDE			
	Y	X	WG25 ^o		Y	X	
L44	95 667.31	3 124	630.89	R38	95 855.27	3 124	528.35
L45	95 582.47	3 124	716.19	R39	95 756.83	3 124	601.65
L46	95 516.94	3 124	747.16	R40	95 686.18	3 124	660.10
L47	95 506.57	3 124	780.99	R41	95 666.34	3 124	679.62
L48	95 530.07	3 124	804.21	R42	95 615.77	3 124	744.34
L49	95 427.67	3 125	164.69	R43	95 565.49	3 124	828.14
L50	95 424.47	3 125	196.98	R44	95 518.10	3 124	963.93
L51	95 304.63	3 125	682.12	R45	95 459.62	3 125	202.82
L52	95 265.84	3 125	817.30	R46	95 333.82	3 125	693.61
L53	95 246.29	3 125	862.99	R47	95 293.64	3 125	835.73
L54	95 218.11	3 125	927.92	R48	95 277.17	3 125	874.16
L55	95 196.07	3 125	973.85	R49	95 237.99	3 125	961.88
L56	95 101.46	3 126	102.07	R50	95 219.82	3 125	995.67
L57	95 048.83	3 126	160.80	R51	95 129.86	3 126	117.44
L58	94 980.35	3 126	219.36	R52	95 068.94	3 126	184.78
L59	94 902.34	3 126	276.06	R53	95 023.45	3 126	223.57
L60	94 861.49	3 126	298.72	R54	94 986.70	3 126	253.55
L61	92 781.25	3 127	443.67	R55	94 931.12	3 126	293.31
L62	92 643.07	3 127	523.61	R56	94 907.08	3 126	308.64
L63	92 512.78	3 127	606.38	R57	94 876.01	3 126	326.24
L64	91 464.19	3 128	303.40	R58	92 785.48	3 127	477.32
L65	90 211.23	3 129	136.10	R59	92 659.67	3 127	550.49
L66	89 305.35	3 129	738.61	R60	92 533.38	3 127	630.39
L67	89 121.98	3 129	859.75	R61	91 498.64	3 128	318.22
L68	88 991.95	3 129	939.87	R62	90 220.37	3 129	167.93
L69	88 868.78	3 130	004.46	R63	89 296.14	3 129	782.29
L70	86 330.72	3 131	265.93	R64	89 141.73	3 129	884.34
L71	85 159.12	3 131	848.06	R65	89 008.19	3 129	966.44
L72	84 960.52	3 131	945.67	R66	88 888.92	3 130	029.16
L73	84 765.86	3 132	023.42	R67	86 354.21	3 131	289.02
L74	83 712.22	3 132	412.44	R68	85 151.67	3 131	885.96
L75	83 664.30	3 132	430.37	R69	85 054.68	3 131	933.24
L76	83 568.63	3 132	461.72	R70	84 865.91	3 132	016.86
L77	83 542.77	3 132	469.91	R71	84 782.50	3 132	050.19
L78	83 404.86	3 132	499.46	R72	83 721.63	3 132	441.92
L79	83 335.99	3 132	510.62	R73	83 570.11	3 132	493.52
L80	83 202.13	3 132	522.48	R74	83 438.12	3 132	525.36
L81	81 263.36	3 132	562.04	R75	83 319.27	3 132	543.61
L82	79 656.70	3 132	594.30	R76	83 203.17	3 132	553.79
L83	77 472.61	3 132	638.57	R77	81 201.27	3 132	594.22
L84	77 294.09	3 132	644.23	R78	79 680.01	3 132	625.16
L85	77 187.53	3 132	650.03	R79	77 472.12	3 132	670.09
L86	77 056.94	3 132	671.45	R80	77 331.32	3 132	672.67
L87	76 897.96	3 132	713.34	R81	77 190.68	3 132	681.06
L88	76 778.42	3 132	757.13	R82	77 062.11	3 132	702.24
L89	76 687.20	3 132	798.54	R83	76 910.75	3 132	742.92
L90	76 608.63	3 132	839.49	R84	76 810.65	3 132	777.26
L91	76 546.01	3 132	877.39	R85	76 712.14	3 132	821.40
L92	76 397.30	3 132	980.80	R86	76 626.40	3 132	866.85
L93	76 266.84	3 133	100.35	R87	76 564.56	3 132	901.92
L94	76 191.41	3 133	185.56	R88	76 417.10	3 133	005.20

Vel Sheet	18	Van of	19	P1237/23
--------------	----	-----------	----	----------

PADRESERWE KOÖRDINATE / ROAD RESERVE CO-ORDINATES					
LINKERKANT/LEFT HAND SIDE			REGTERKANT/RIGHT HAND SIDE		
	Y	X	WG25 ^o	Y	X
L95	74 716.71	3 134 902.12		R89	76 305.39 3 133 106.88
L96	74 587.27	3 135 042.00		R90	76 163.42 3 133 264.37
L97	74 466.78	3 135 157.48		R91	75 155.83 3 134 437.89
L98	73 747.82	3 135 764.48		R92	75 141.06 3 134 455.90
L99	73 654.86	3 135 841.08		R93	74 740.37 3 134 923.11
L100	73 536.87	3 135 930.93		R94	74 609.97 3 135 063.01
L101	73 524.14	3 135 940.58		R95	74 484.78 3 135 183.65
L102	73 336.78	3 136 109.44		R96	73 660.96 3 135 878.66
L103	71 643.27	3 137 533.06		R97	73 585.59 3 135 950.62
L104	69 549.34	3 139 294.12		R98	73 571.53 3 135 961.40
				R99	73 359.59 3 136 131.42
				R100	71 673.13 3 137 548.54
				R101	69 567.44 3 139 318.07

Vel Sheet	19	Van of	19	P1237/23
--------------	----	-----------	----	----------