
GOVERNMENT NOTICES • GOEWERMENTSKENNISGEWINGS

DEPARTMENT OF TRANSPORT

NO. 4424

23 February 2024

**THE SOUTH AFRICAN NATIONAL ROADS
AGENCY SOC LIMITED**Registration No: 1998/009584/30

DECLARATION AMENDMENT OF NATIONAL ROAD R31 SECTION 4

AMENDMENT OF DECLARATION No. 2670 OF 2022.

By virtue of section 40(1)(b) of the South African National Roads Agency Limited and the National Roads Act 1998 (Act No. 7 of 1998), I hereby amend Declaration No. 2670 of 2022 by substituting paragraph A of the Schedule, being the descriptive declaration of the route from Santoy up to Kuruman, with the accompanying sheets 1 to 22 of Plan No. P1239/23.

In the town of Kuruman the R31 Section 4 enters the town from the north and follows the streets known as Voortrekker Street and Tsenin Road, at the time of declaration, up to its intersection with N14, also known as Main Street, at time of declaration.

(National Road R31 Section 4: Santoy – Kuruman)**MINISTER OF TRANSPORT**

DEPARTEMENT VAN VERVOER

NO. 4424

23 Februarie 2024

**DIE SUID-AFRIKAANSE NASIONALE
PADAGENTSKAP MSB BEPERK**

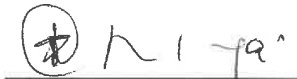
Registrasie No: 1998/009584/30

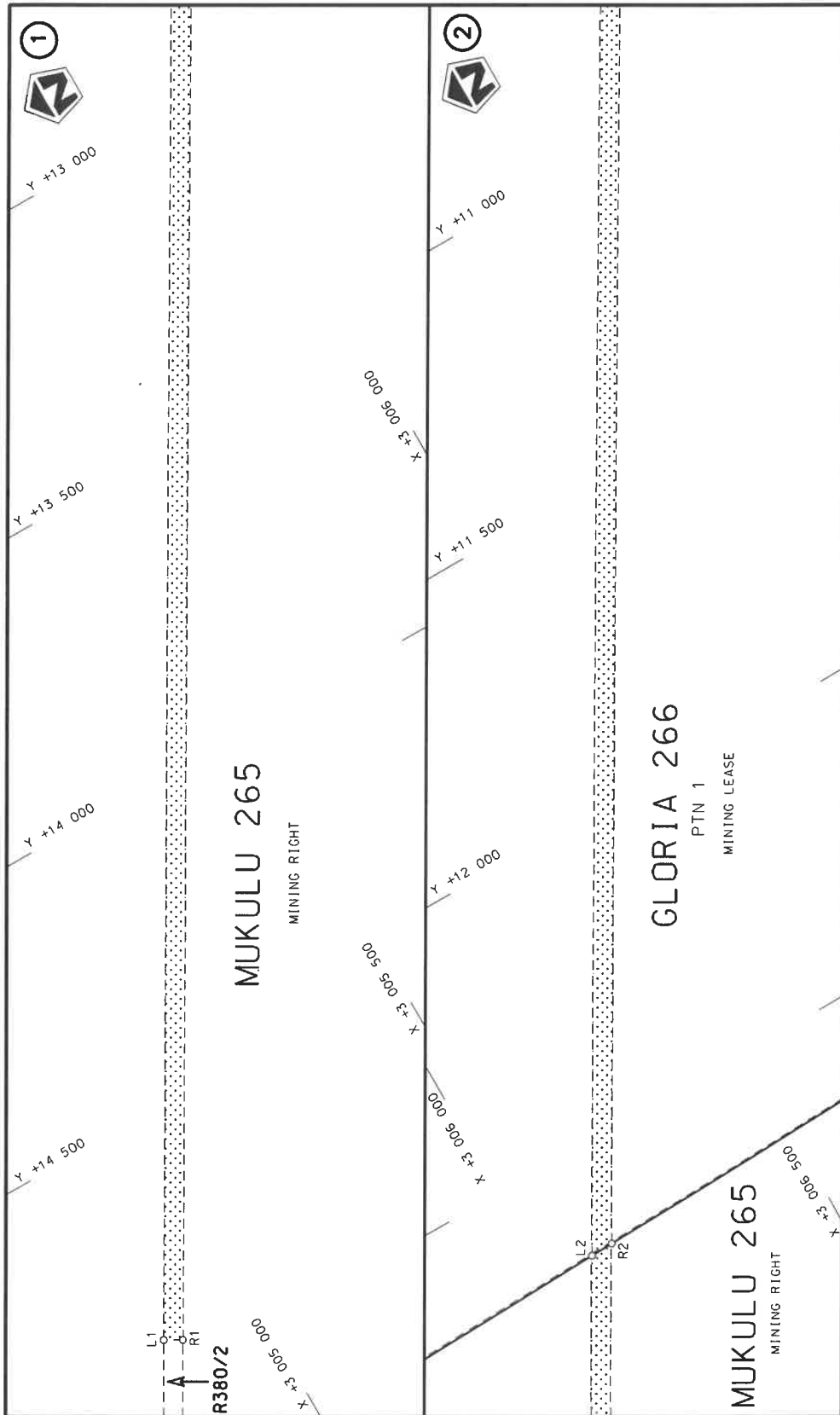
VERKLARING WYSIGING VAN NASIONALE PAD R31 SEKSIE 4

WYSIGING VAN VERKLARING No. 2670 VAN 2022.

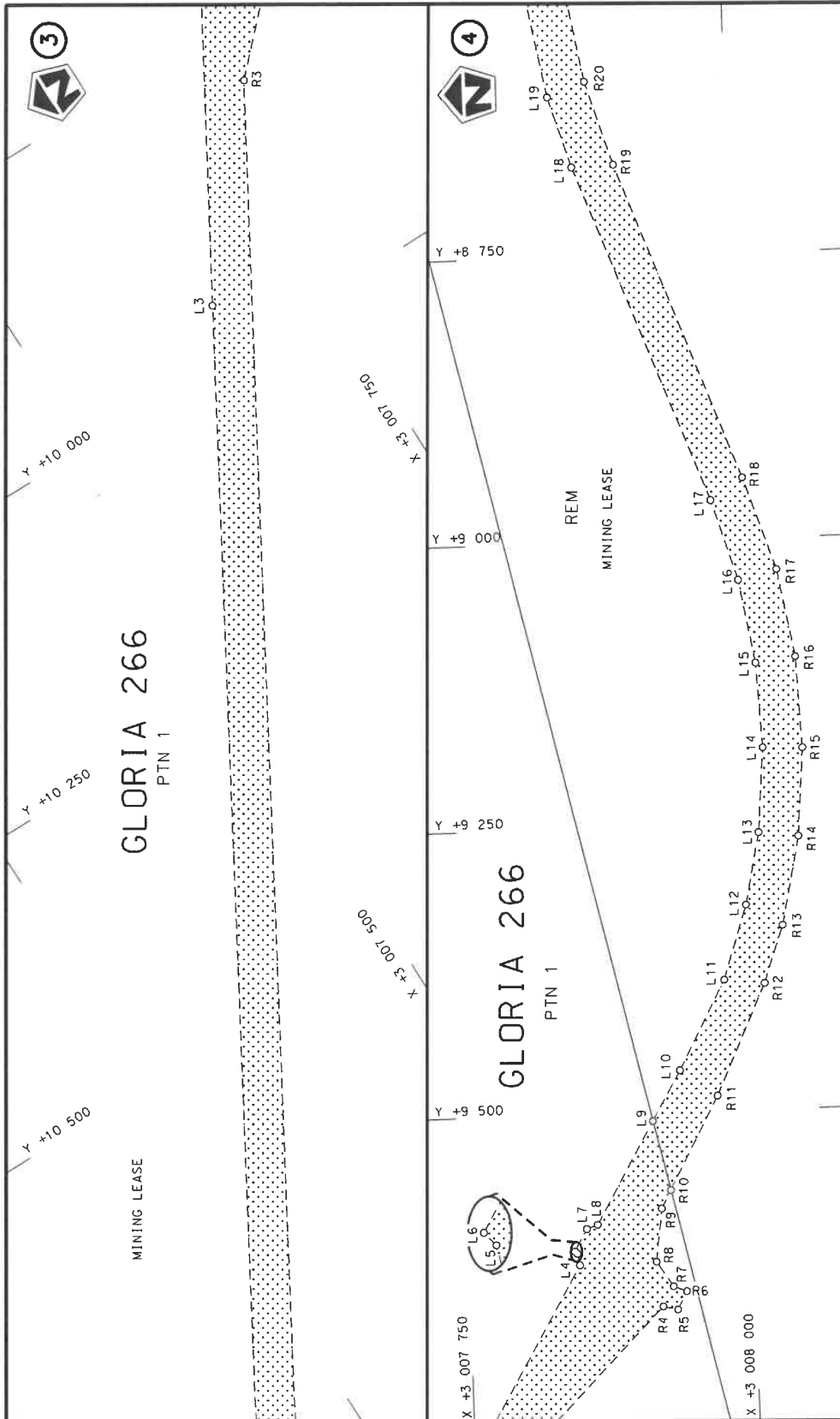
Kragtens Artikel 40(1)(b) van die Suid-Afrikaanse Nasionale Padagentskap Beperk en Nasionale Paaie Wet 1998 (Wet No. 7 van 1998), wysig ek hiermee Verklaring No. 2670 van 2022 deur paragraaf A van die Skedule te vervang, synde die gedeelte van die beskrywende verklaring van die pad vanaf Santoy tot by Kuruman, met bygaande velle 1 tot 22 van Plan No. P1239/23.

In die dorp Kuruman kom die R31 Seksie 4 die dorp binne vanuit die noorde en volg dan die strate bekend as Voortrekkerstraat en Tseninweg, tydens datum van verklaring, tot by die interseksie met N14, ook bekend as Hoofstraat, tydens datum van verklarling.

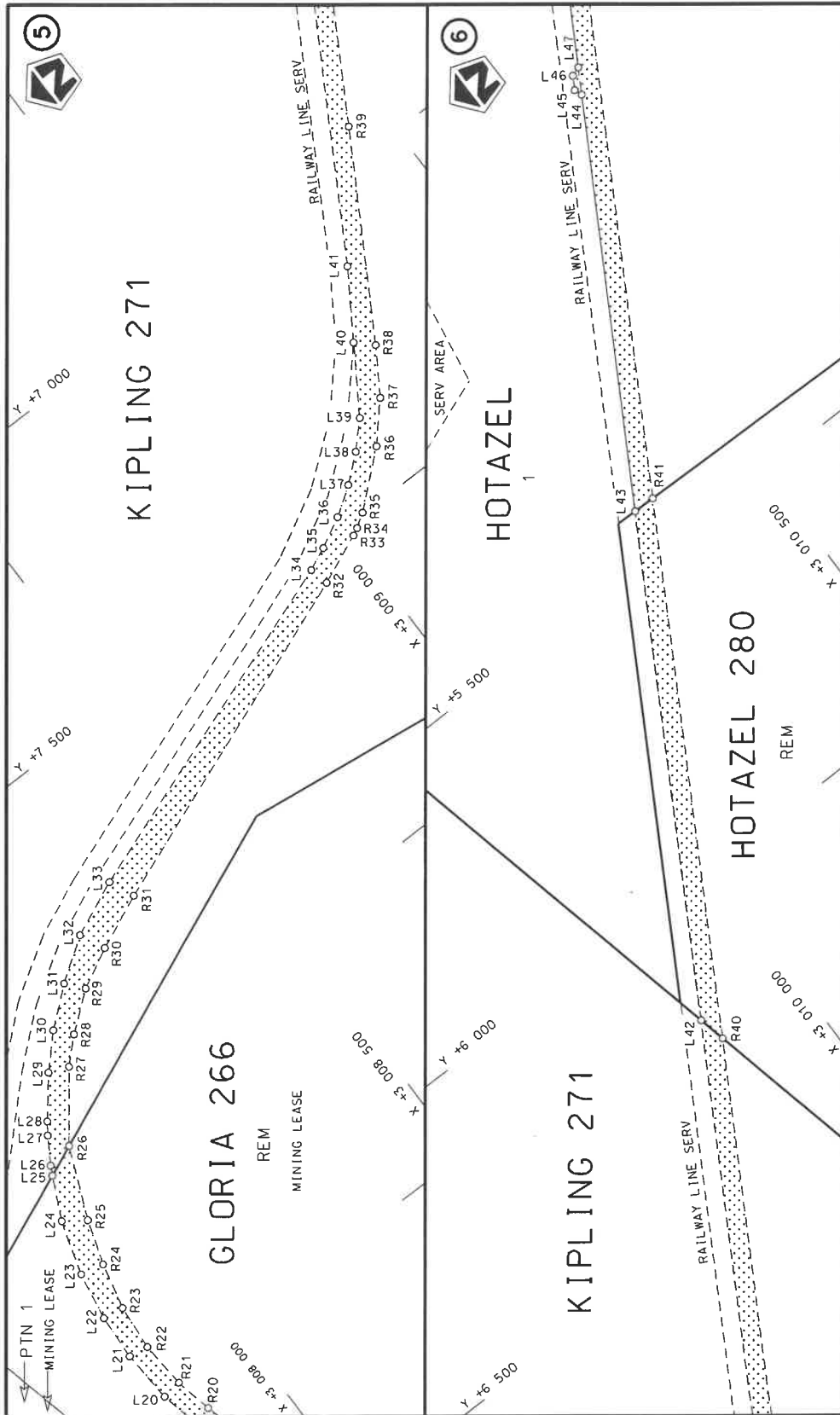
(Nasionale Pad R31 Seksie 4: Santoy – Kuruman)**MINISTER VAN VERVOER**

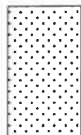


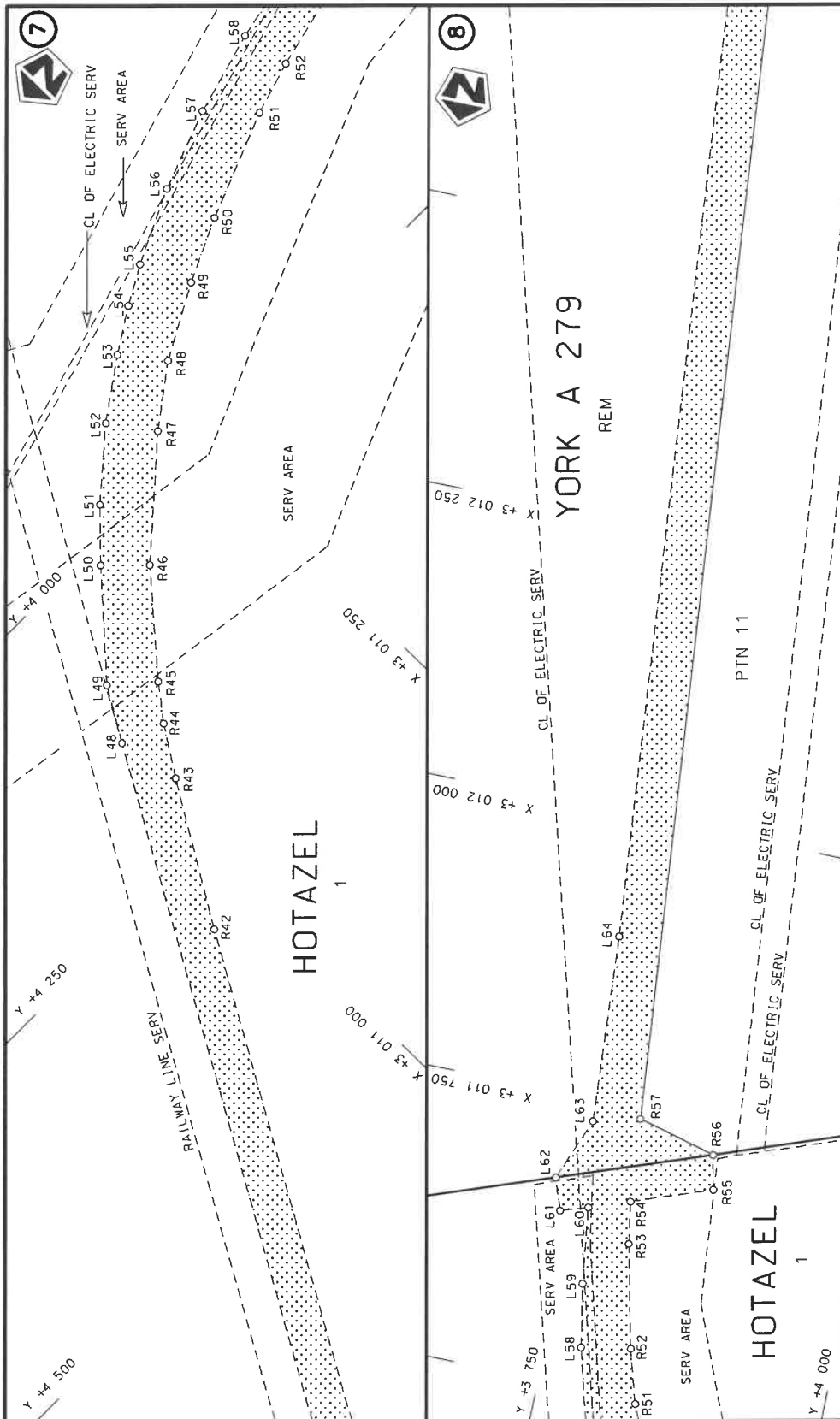
<p>Die Suid Afrikaanse Nasionale Padagentskap MSB Bpk The South African National Roads Agency SOC Ltd</p>	<p>Die figuur getoon The figure shown</p>	<p>stel die padreserwe voor van 'n gedeelte represents the road reserve of a portion van Nasionale Roete R31 at National Route</p>	<p>Vel Sheet 1 of 22 Plan P1239/23</p>
			<p>4</p>



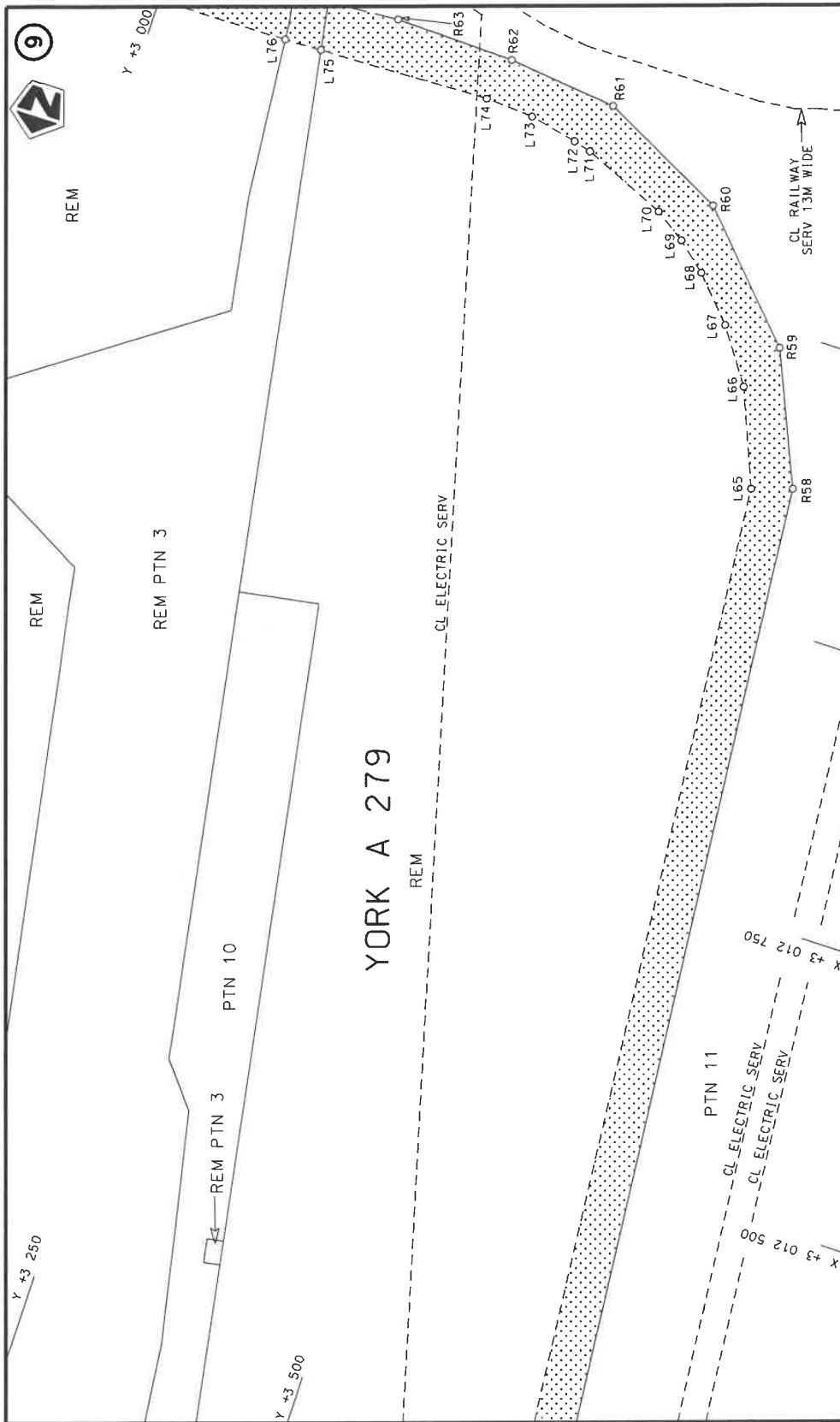
<p>Die Suid Afrikaanse Nasionale Padagentskap MSB Bpk The South African National Roads Agency SOC Ltd</p>	<p>Die figuur getoon The figure shown</p>	<p>stelt die padreserwe voor van 'n gedeelte represents the road reserve of a portion van Nasionale Roete R31 of National Route Seksie R31 Section</p>	<p>Vel Sheet 2 of 22 Plan P1239/23</p>
---	---	--	--



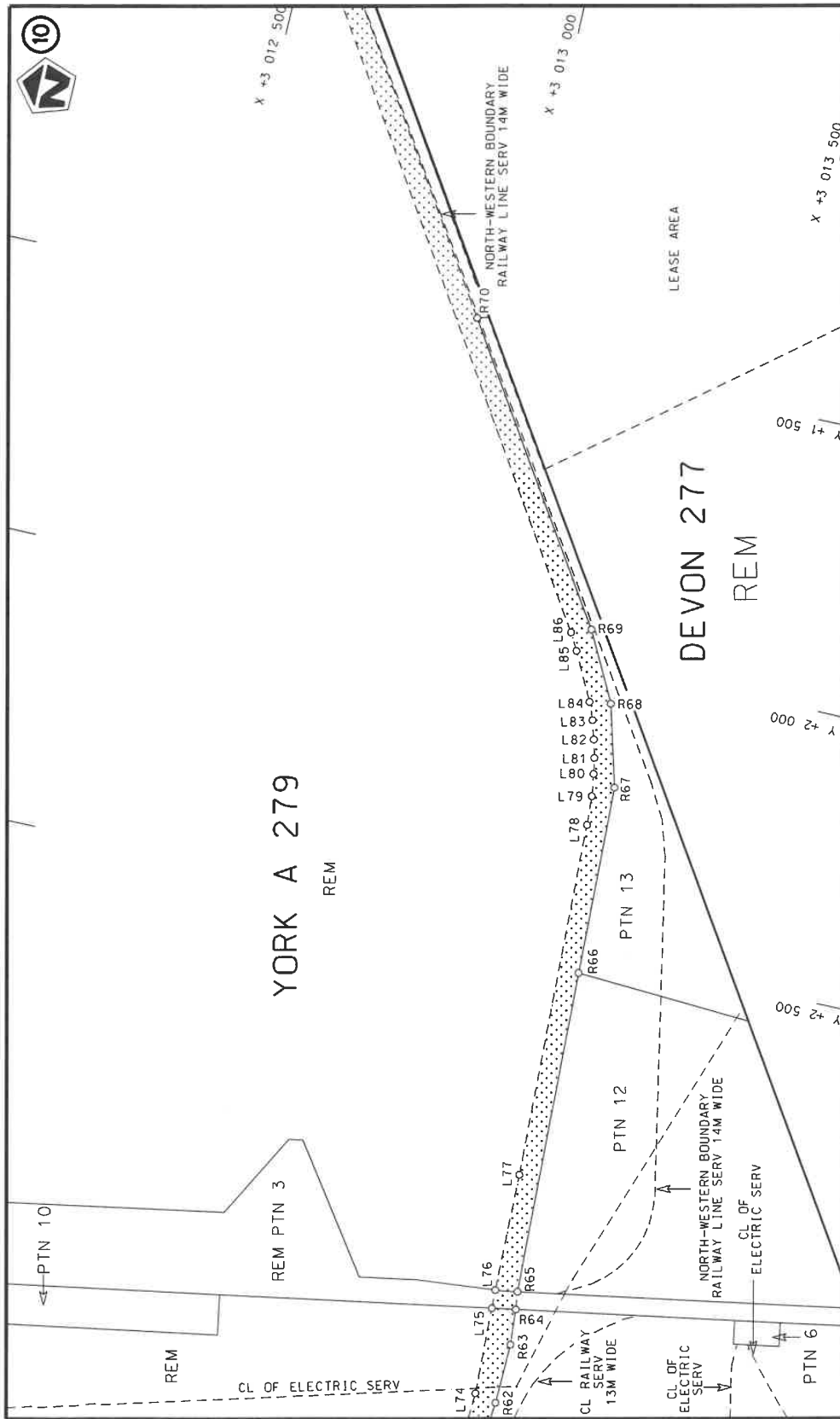
<p>Die Suid Afrikaanse Nasionale Padagentskap MSB Bpk The South African National Roads Agency SOC Ltd</p>	<p>Die figuur getoon The figure shown</p>		<p>stelt die padreserwe voor van 'n gedeelte represents the road reserve of a portion van Nasionale Roete R31 of National Route Section</p>	<p>Vel Sheet 3 of 22 Plan P1239/23</p>
---	---	---	---	--



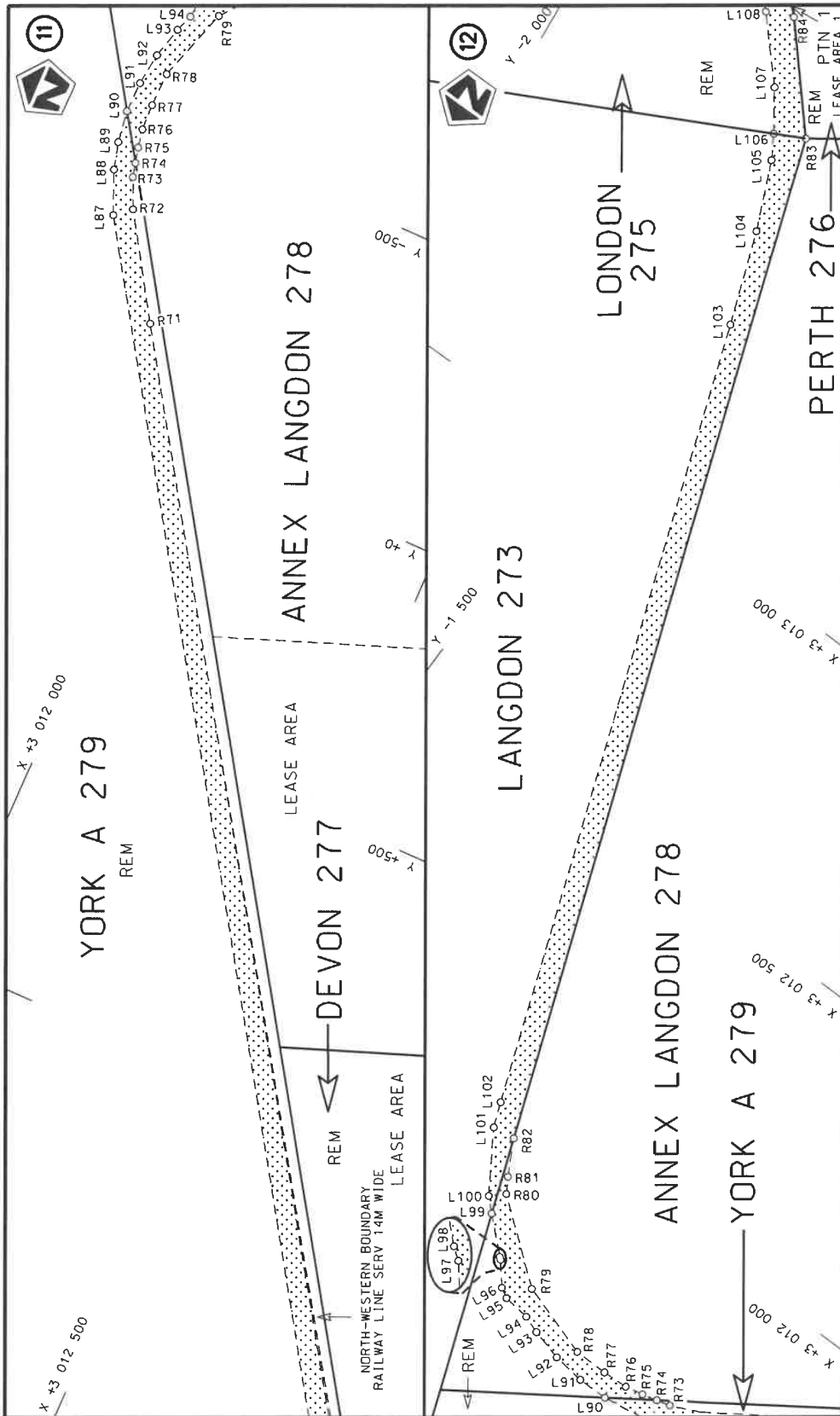
<p>Die Suid Afrikaanse Nasionale Padogentskap MSB Bpk The South African National Roads Agency SOC Ltd</p>	<p>Die figuur getoon The figure shown</p>		<p>stel die padreserwe voor van 'n gedeelte represents the road reserve of a portion van Nasionale Roete R31 of National Route R31</p>	<p>Vel Sheet 4 of 22 Plan P1239/23</p>
---	---	--	--	--

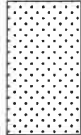


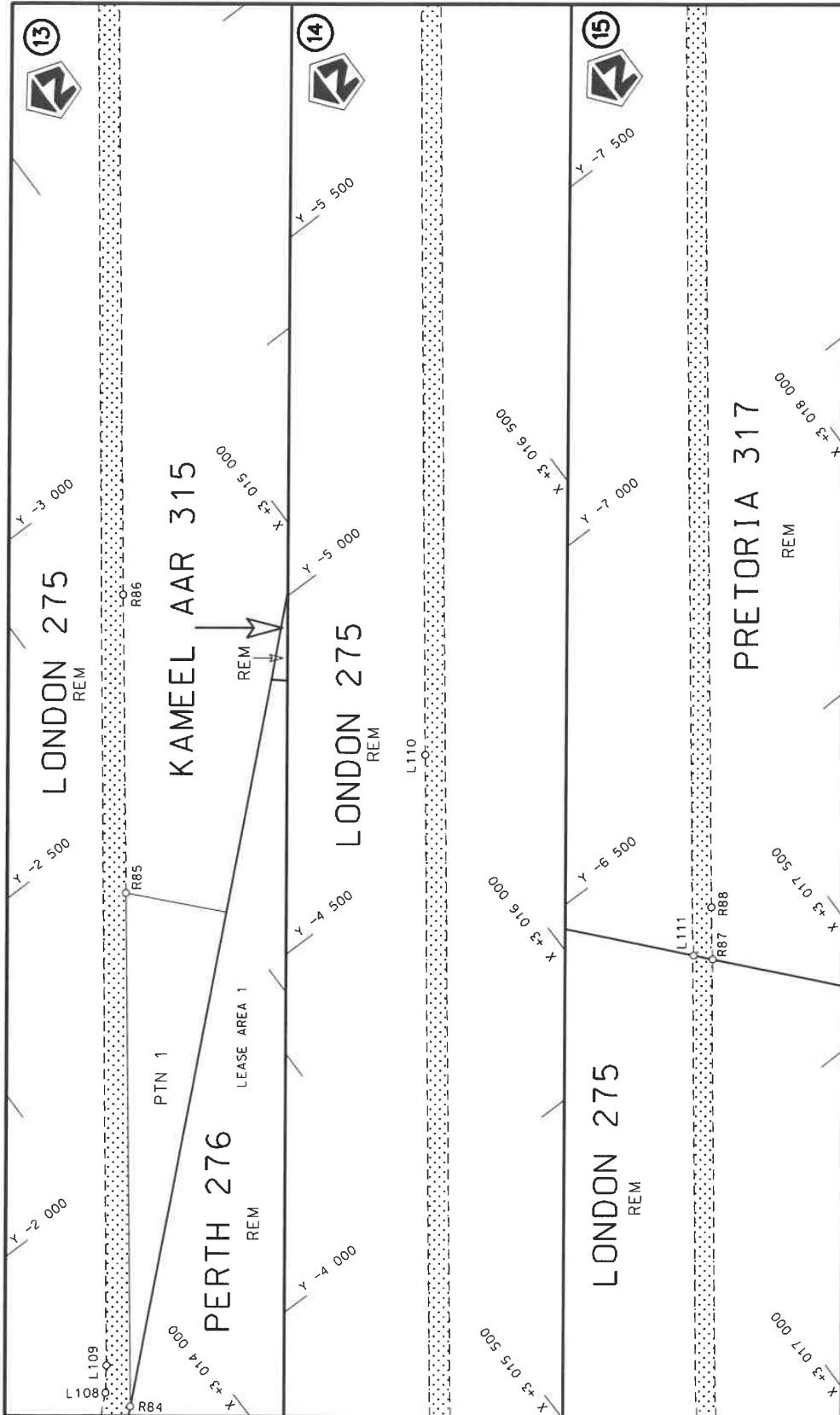
Die Suid Afrikaanse Nasionale Padagentskap MSB Bpk The South African National Roads Agency SOC Ltd	Die figuur getoon The figure shown	steldie padreserwe voor van 'n gedeelte represents the road reserve of a portion van Nasionale Roete R31 of National Route R31 Seksie Section	Vel Sheet 5 of 22	4	Plan P1239/23
---	---------------------------------------	---	----------------------	---	---------------



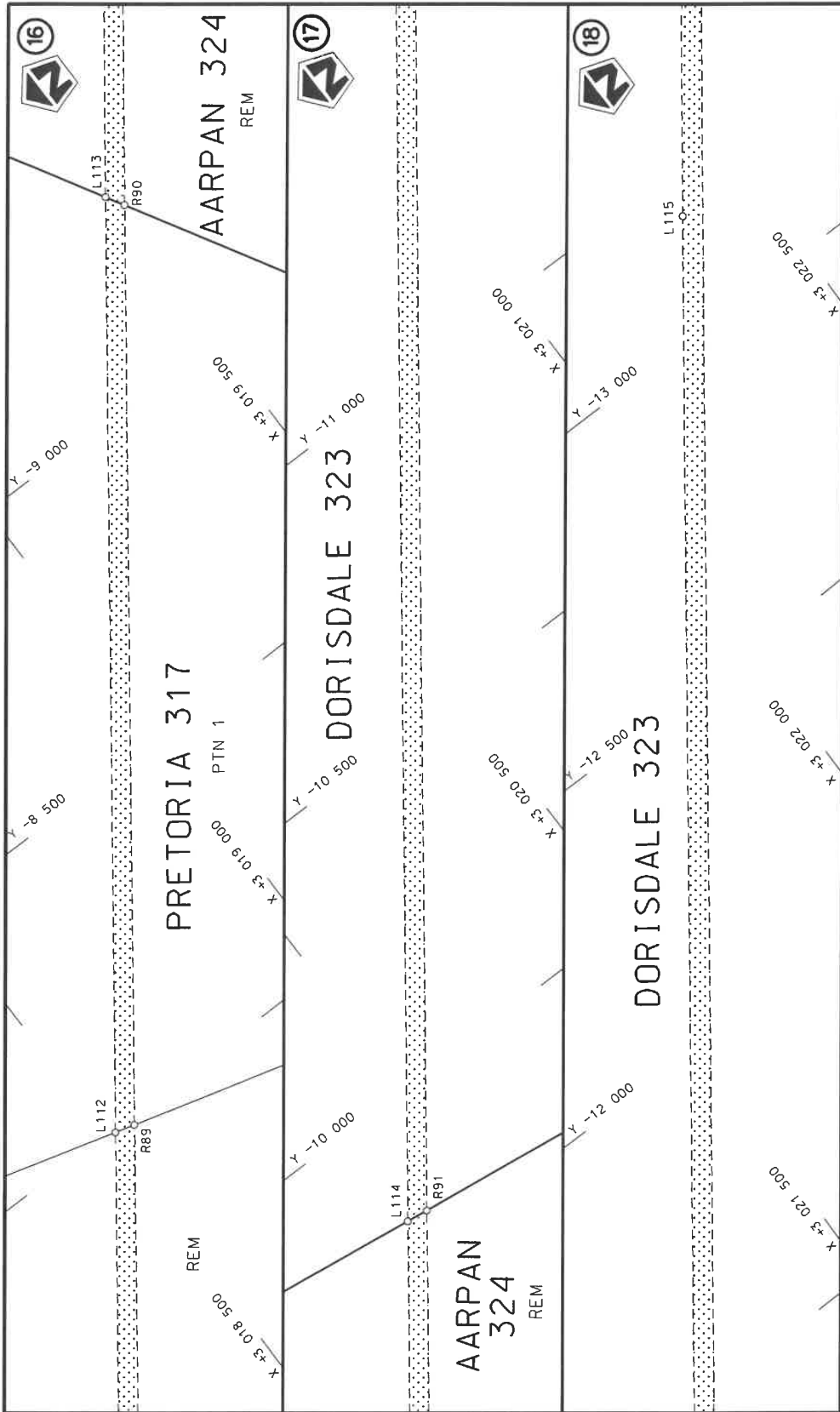
<p>Die Suid Afrikaanse Nasionale Padagentskap MSB Bpk The South African National Roads Agency SOC Ltd</p>	<p>Die figuur getoon The figure shown</p>	<p>steldie padreserwe voor van 'n gedeelte represents the road reserve of a portion van Nasionale Roete R31 of National Route</p>	<p>4</p>	<p>Vel Sheet 6 of 22 Plan P1239/23</p>
---	---	---	----------	--

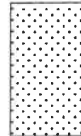


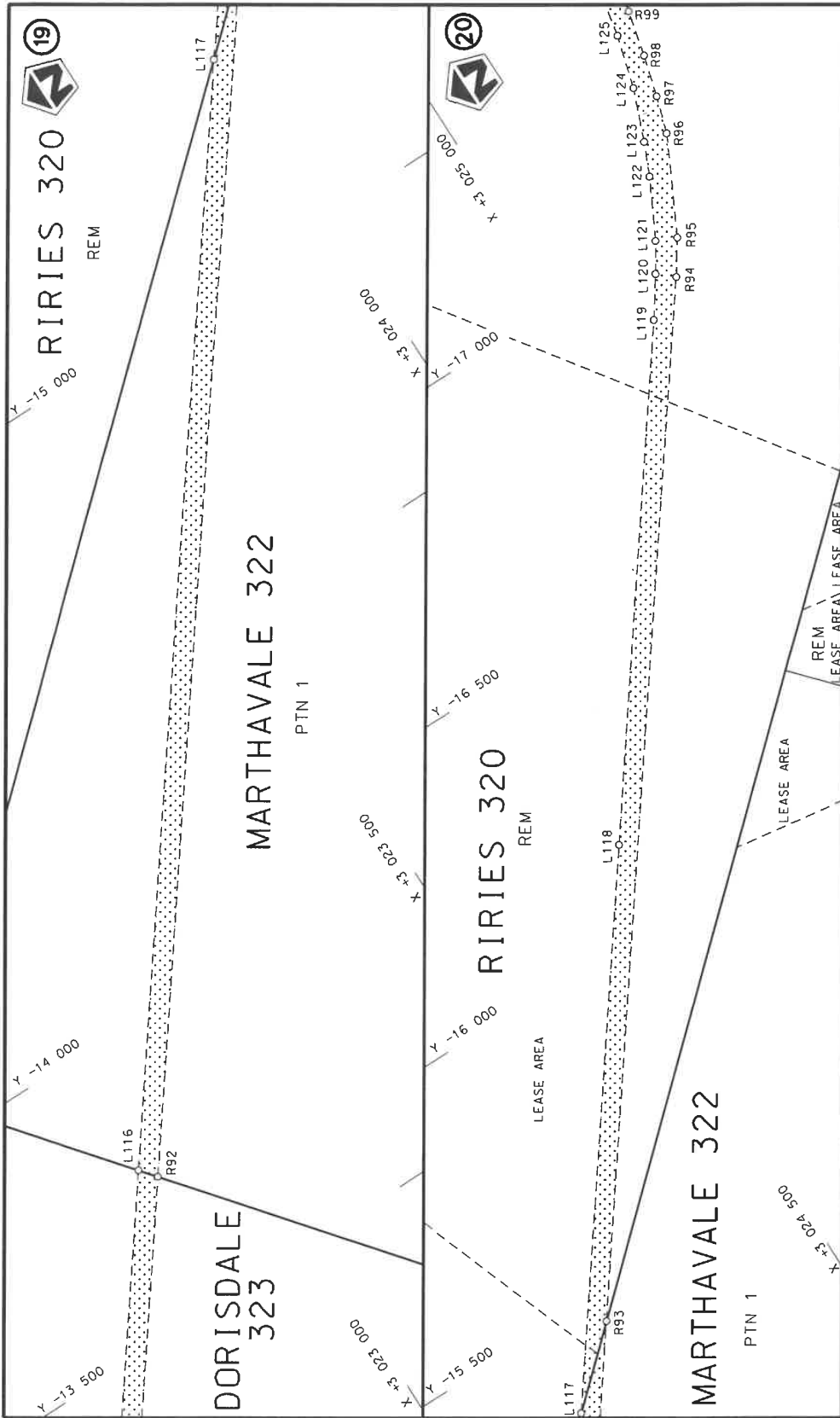
Die Suid Afrikaanse Nasionale Padagentskap MSB Bpk The South African National Roads Agency SOC Ltd	Die figuur getoon The figure shown		stel die padreserwe voor van 'n gedeelte represents the road reserve of a portion van Nasionale Roete R31 Seksie of National Route Section	
			4	
	Vel Sheet 7 of 22	Plan P1239/23		



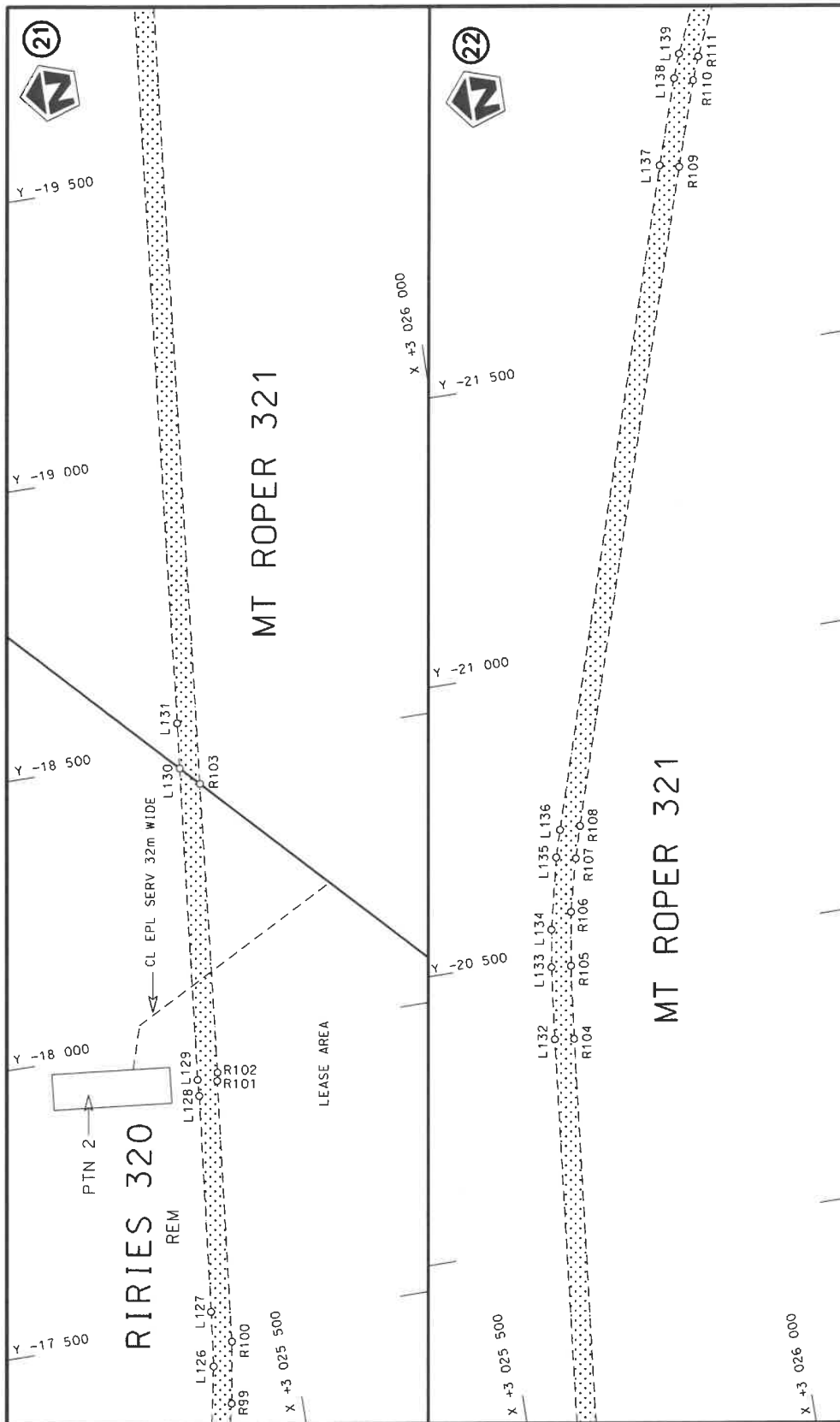
Die Suid Afrikaanse Nasionale Padagentskap MSB Bpk The South African National Roads Agency SOC Ltd	Die figuur getoon The figure shown	steldie padreserwe voor van 'n gedeelte represents the road reserve of a portion van Nasionale Roete R31 Seksie of National Route R31 Section	Vel Sheet 8 of 22 Plan P1239/23
---	---------------------------------------	--	--



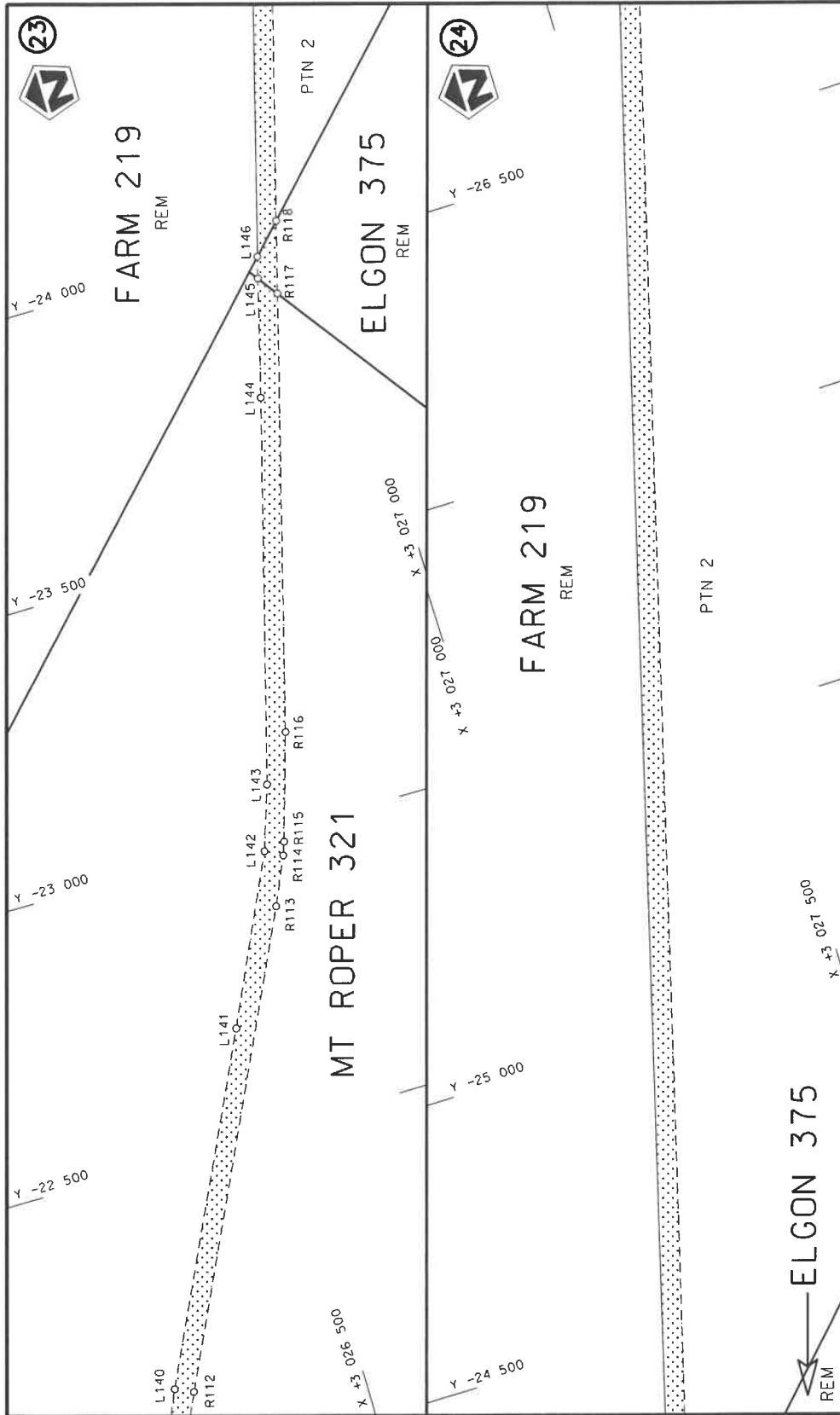
<p>Die Suid Afrikaanse Nasionale Padagentskap MSB Bpk The South African National Roads Agency SOC Ltd</p>	<p>Die figuur getoon The figure shown</p> 	<p>stelt die padreserwe voor van 'n gedeelte represents the road reserve of a portion von Nasionale Roete R31 Seksie 4 of National Route Section</p>	<p>Vel Sheet 9 of 22 Plan P1239/23</p>
---	---	--	--



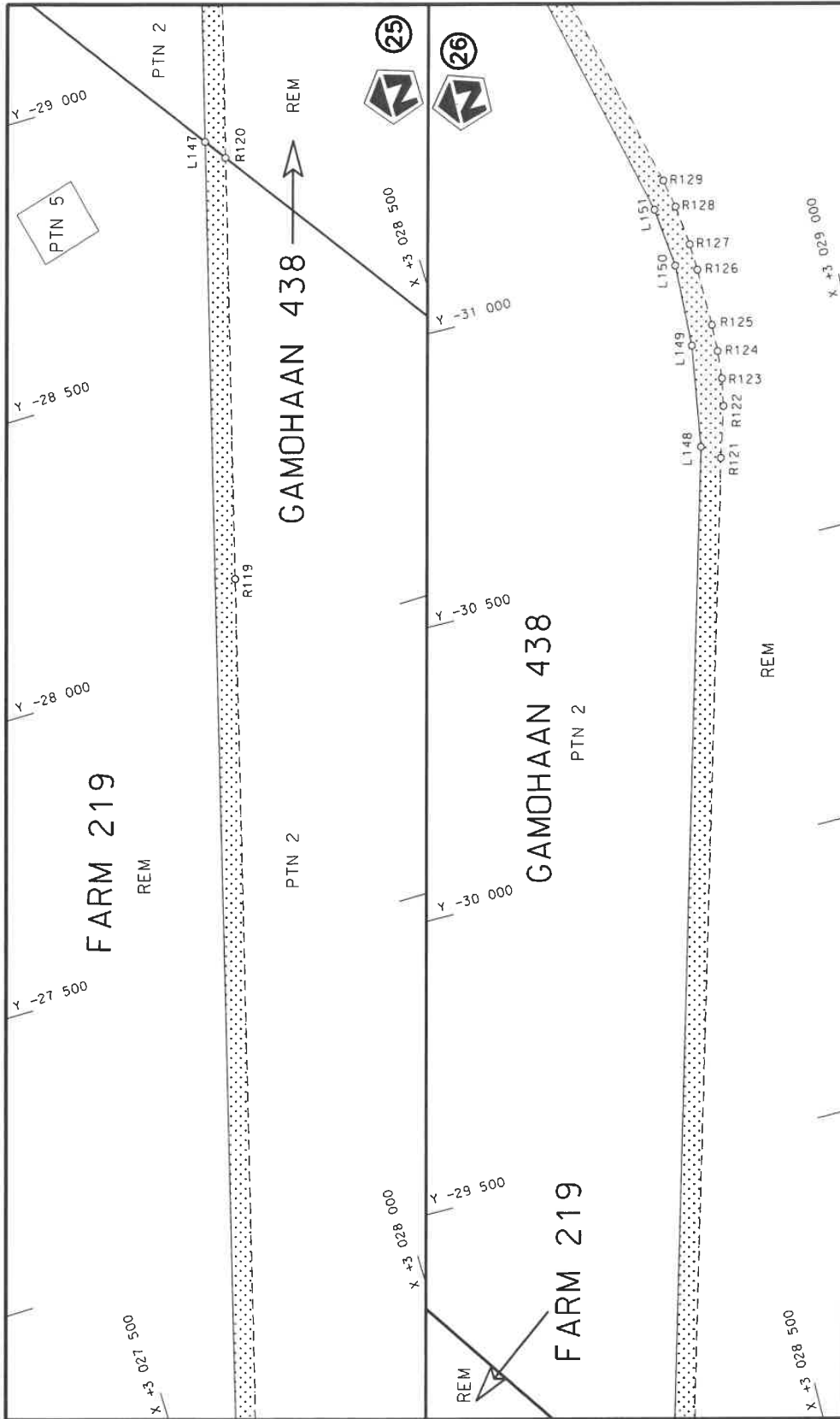
Die Suid Afrikaanse Nasionale Padagentskop MSB Bpk The South African National Roads Agency SOC Ltd	Die figuur getoon The figure shown	stelt die padreserwe voor van 'n gedeelte represents the road reserve of a portion van Nasionale Roete R31 of National Route of National Route	Vel Sheet 10 of 22 Plan P1239/23
---	---------------------------------------	---	---



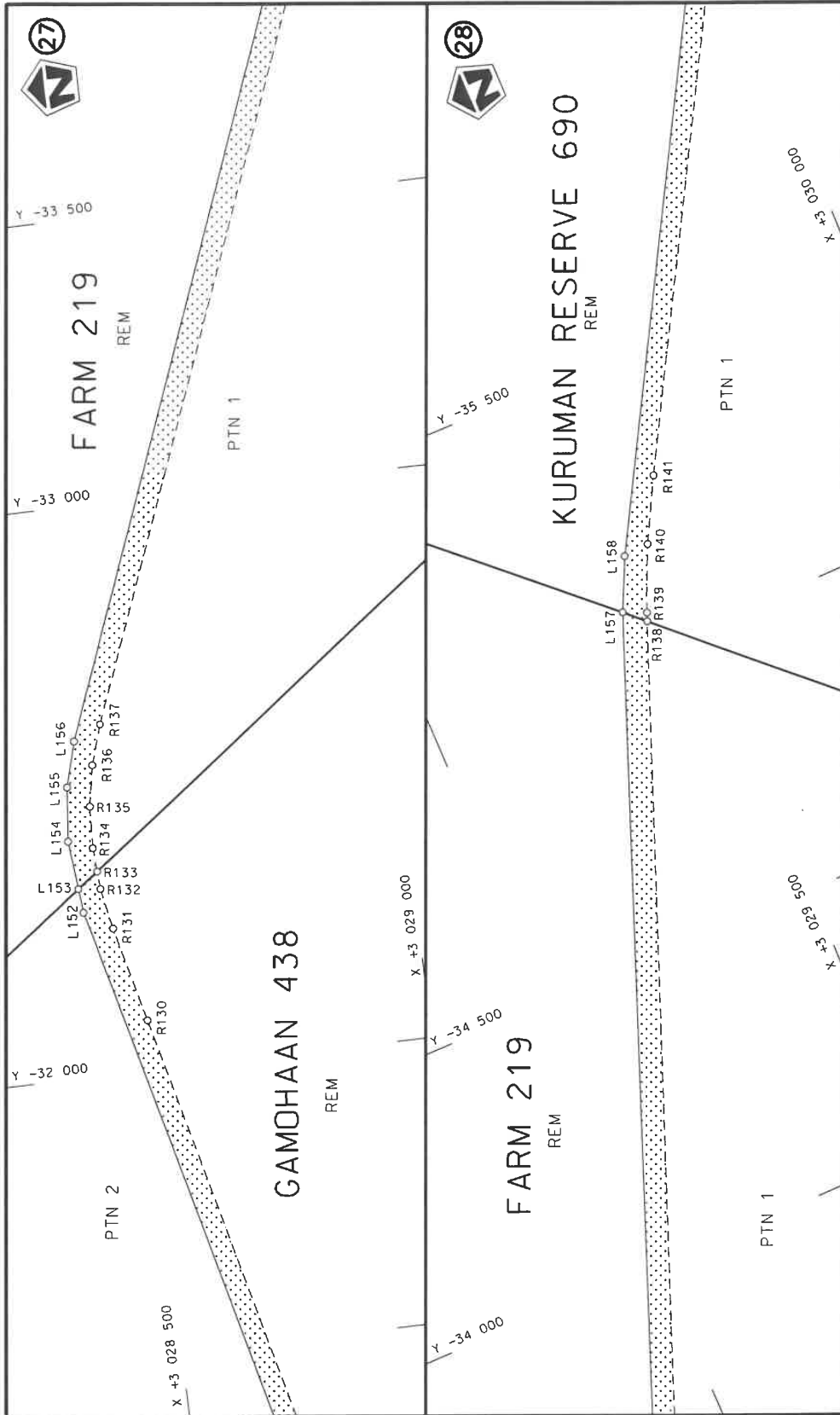
Vel Sheet 11 of 22	stel die padreserwe voor van 'n gedeelte represents the road reserve of a portion van Nasionale Roete R31 . of National Route R31 . Seksie Section 4	Die Suid Afrikaanse Nasionale Padagentskap MSB Bpk The South African National Roads Agency SOC Ltd
	Die figuur getoon The figure shown	
Plan P1239/23		

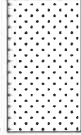


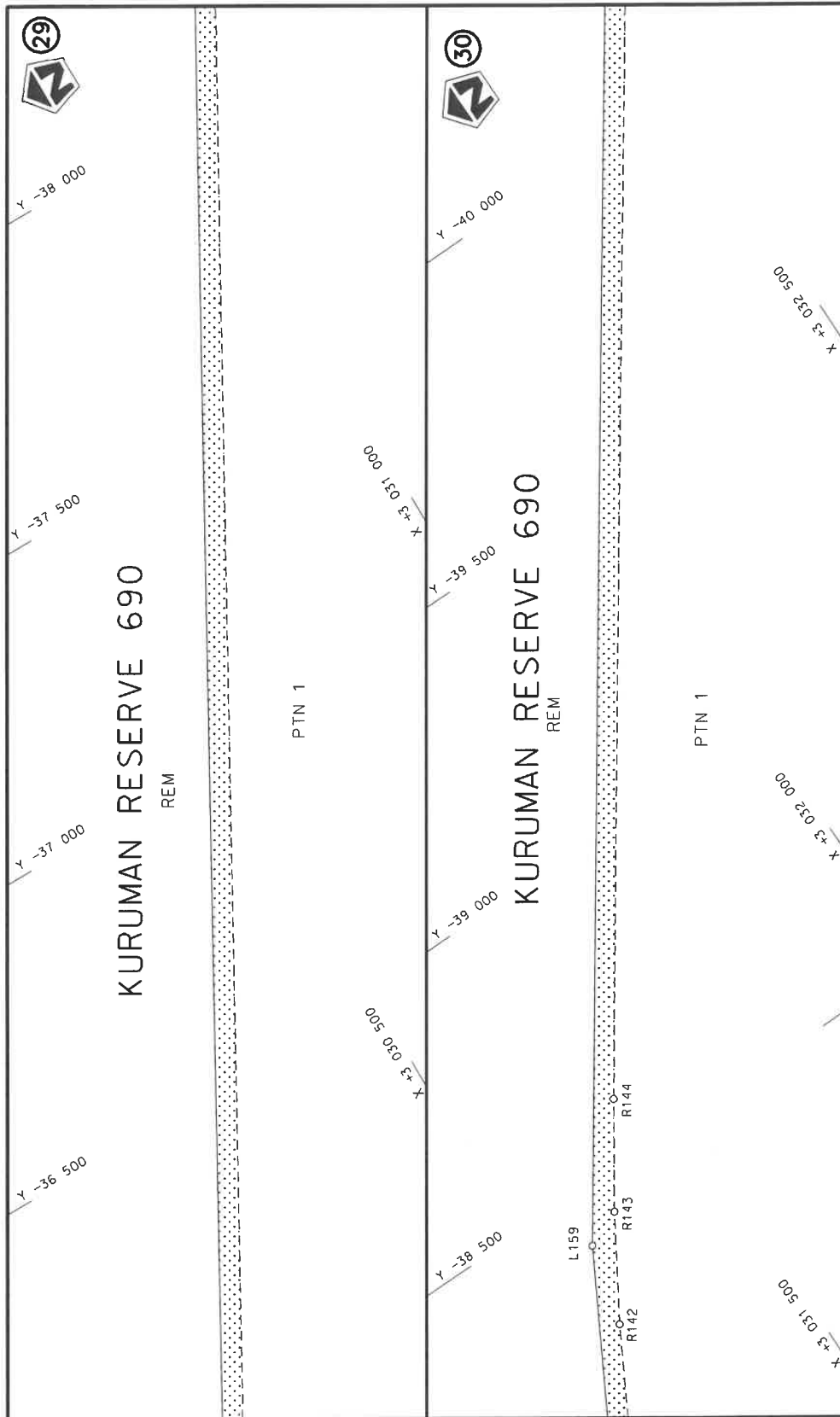
<p>Die Suid Afrikaanse Nasionale Padagentskap MSB Bpk The South African National Roads Agency SOC Ltd</p>	<p>Die figuur getoon The figure shown</p>	<p>steldie padreserwe voor van 'n gedeelte represents the road reserve of a portion van Nasionale Roete R31 of National Route</p>	<p>Vel Sheet 12 of 22 Plan P1239/23</p>
---	---	---	---




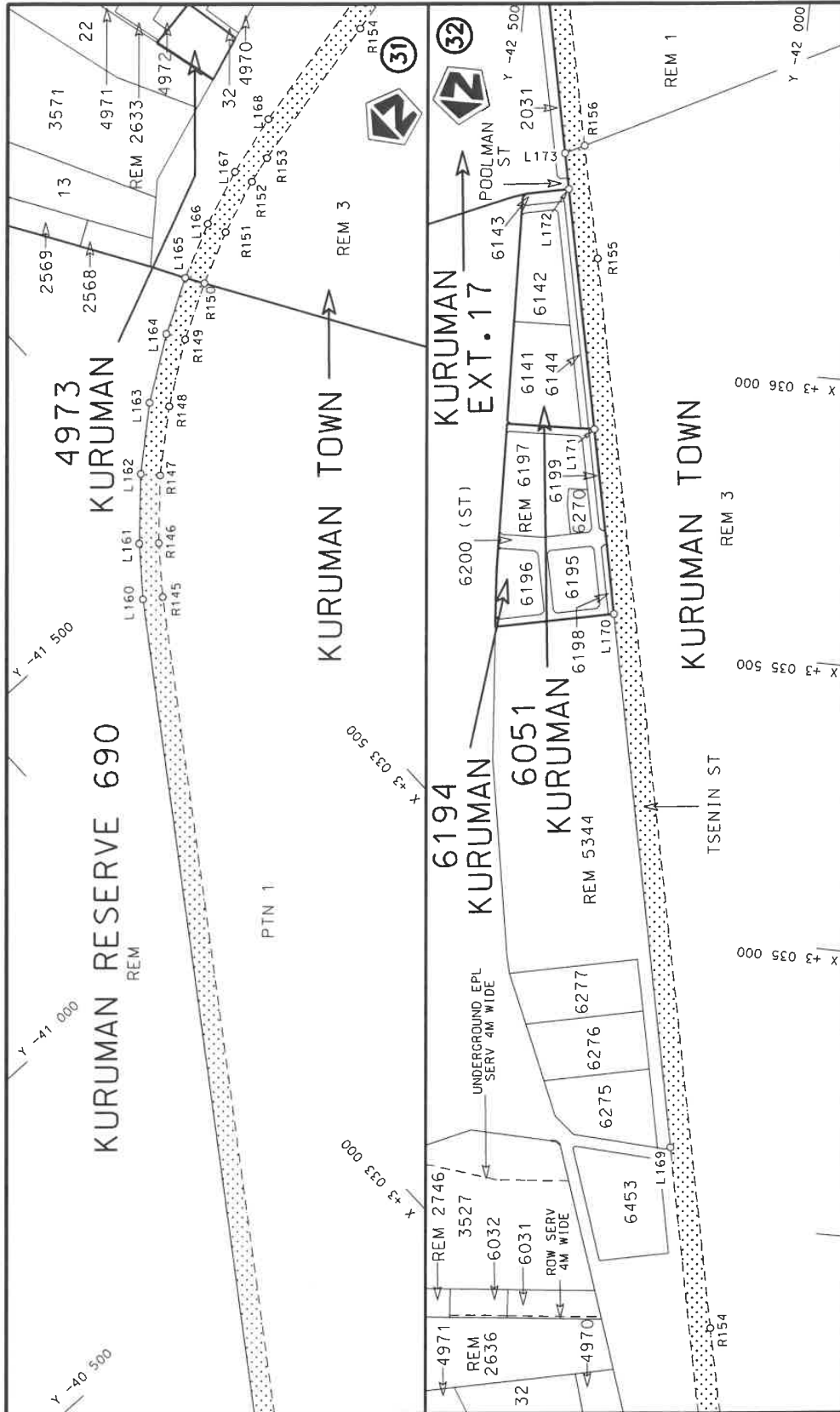
Die Suid-Afrikaanse Nasionale Padagentskap MSB Bpk The South African National Roads Agency SOC Ltd	Die figuur getoon The figure shown	steldie podreserwe voor van 'n gedeelte represents the road reserve of a portion van Nasionale Roete R31 Sektie 4 of National Route Section	Vel Sheet 13 of 22 Plan P1239/23
---	---------------------------------------	--	--

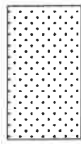


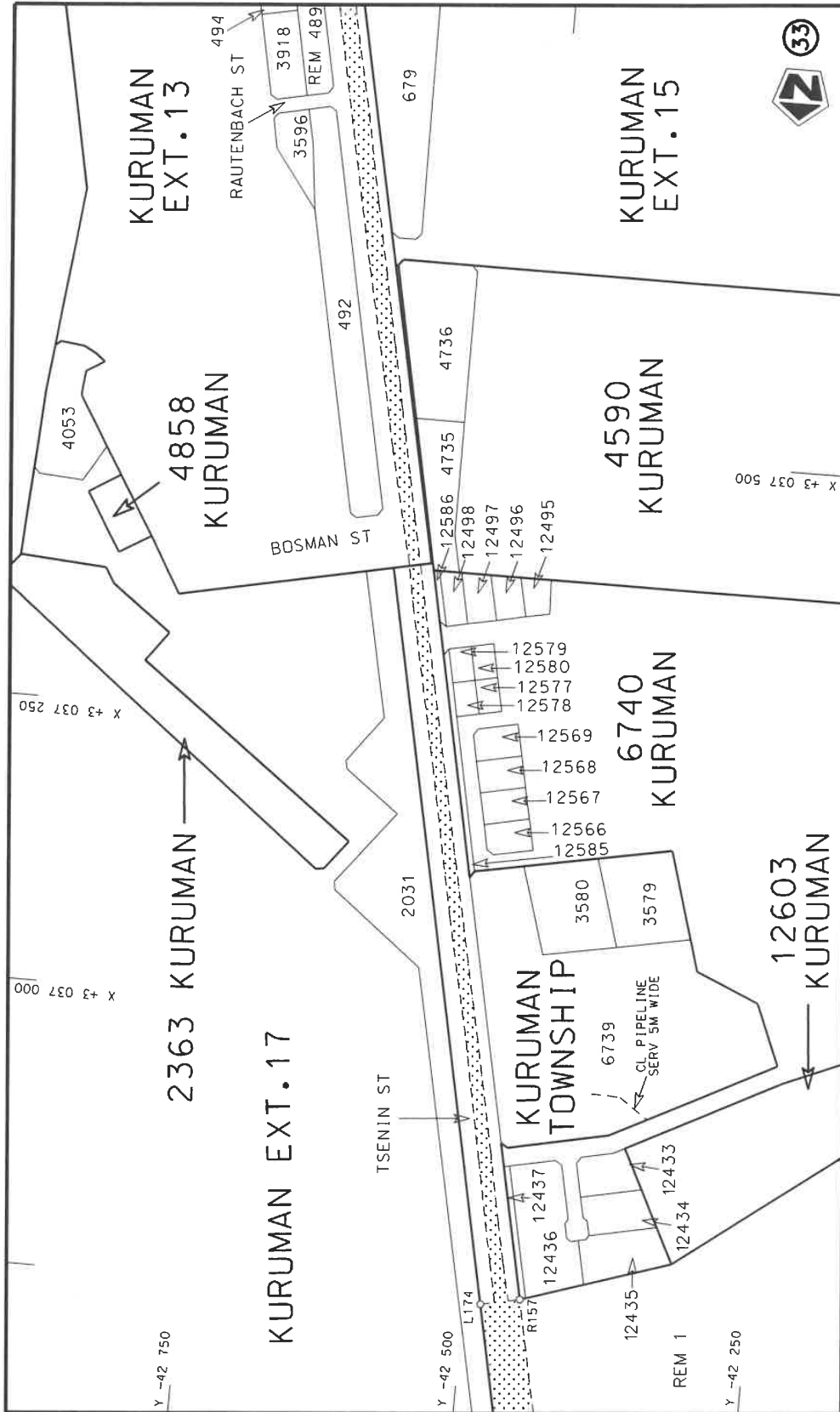
<p>Die Suid Afrikaanse Nasionale Padagentskap MSB Bpk The South African National Roads Agency SOC Ltd</p>	<p>Die figuur getoon The figure shown</p>		<p>steldie padreserwe voor van 'n gedeelte represents the road reserve of a portion van Nasionale Roete R31 of National Route</p> <p>R31 Seksie Section</p> <p>4</p>	<p>Vel Sheet 14 of 22</p> <p>Plan P1239/23</p>
---	---	---	--	--




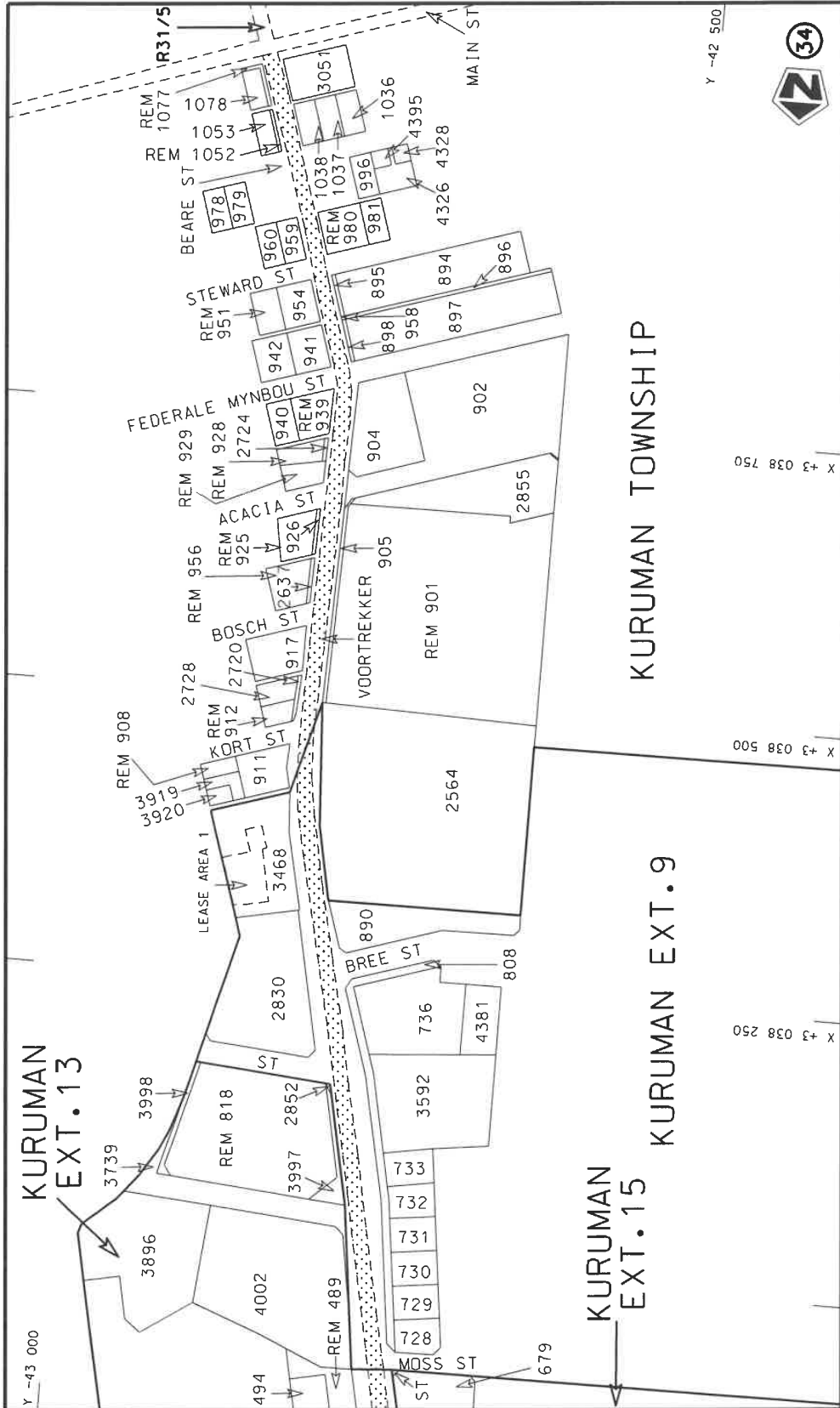
<p>Die Suid Afrikaanse Nasionale Padagentskap MSB Bpk The South African National Roads Agency SOC Ltd</p>	<p>Die figuur getoon The figure shown</p>		<p>stelt die padreserwe voor van 'n gedeelte represents the road reserve of a portion van Nasionale Roete R31 of National Route</p>	<p>Vel Sheet 15 of 22 Plan P1239/23</p>
---	---	---	---	---



Die Suid Afrikaanse Nasionale Padogentskap MSB Bpk The South African National Roads Agency SOC Ltd	Die figuur getoon The figure shown		steldie padreserwe voor van 'n gedeelte represents the road reserve of a portion van Nasionale Roete R31 of National Route R31 Seksie Section	Vel van Sheet 16 of 22 Plan P1239/23
---	---------------------------------------	---	--	--



Die Suid Afrikaanse Nasionale Padagentskap MSB Bpk The South African National Roads Agency SOC Ltd	Die figuur getoon The figure shown	 steidie padreserwe voor van 'n gedeelte represents the road reserve of a portion van Nasionale Roete R31 of National Route R31	Vel Sheet 17 of 22 Plan P1239/23
---	---------------------------------------	---	-------------------------------------



Vel Sheet 18 of 22 Plan P1239/23	stel die padreserwe voor van 'n gedeelte represents the road reserve of a portion van Nasionale Roete R31 of National Route 4 Seksie Section	Die Suid-Afrikaanse Nasionale Padagentskap MSB Bpk The South African National Roads Agency SOC Ltd
-------------------------------------	---	---

PADRESERWE KOÖRDINATE / ROAD RESERVE CO-ORDINATES						
LINKERKANT/LEFT HAND SIDE				REGTERKANT/RIGHT HAND SIDE		
	Y	X	WG23 °		Y	X
L1	14 858.60	3 004 829.77		R1	14 875.22	3 004 858.75
L2	12 676.78	3 006 088.84		R2	12 675.42	3 006 128.88
L3	9 954.23	3 007 659.94		R3	9 802.26	3 007 787.81
L4	9 630.74	3 007 846.76		R4	9 669.08	3 007 918.70
L5	9 620.74	3 007 844.80		R5	9 672.20	3 007 931.44
L6	9 618.50	3 007 842.69		R6	9 656.37	3 007 939.61
L7	9 599.28	3 007 853.57		R7	9 651.75	3 007 928.13
L8	9 595.80	3 007 863.15		R8	9 629.82	3 007 913.84
L9	9 507.19	3 007 913.68		R9	9 583.29	3 007 919.60
L10	9 462.96	3 007 938.90		R10	9 568.11	3 007 927.69
L11	9 385.01	3 007 980.01		R11	9 486.14	3 007 971.41
L12	9 320.04	3 008 000.88		R12	9 389.18	3 008 015.44
L13	9 257.07	3 008 013.78		R13	9 338.86	3 008 032.59
L14	9 183.11	3 008 019.51		R14	9 261.28	3 008 048.43
L15	9 108.93	3 008 015.28		R15	9 184.24	3 008 054.20
L16	9 035.95	3 008 001.90		R16	9 104.51	3 008 050.06
L17	8 965.55	3 007 979.62		R17	9 027.76	3 008 035.84
L18	8 671.09	3 007 865.90		R18	8 946.63	3 008 007.95
L19	8 609.34	3 007 846.18		R19	8 669.91	3 007 902.16
L20	8 519.53	3 007 828.46		R20	8 596.72	3 007 878.73
L21	8 425.78	3 007 822.96		R21	8 515.24	3 007 863.17
L22	8 345.10	3 007 827.58		R22	8 431.96	3 007 857.45
L23	8 259.33	3 007 842.46		R23	8 350.71	3 007 864.54
L24	8 164.01	3 007 871.93		R24	8 269.03	3 007 883.97
L25	8 091.30	3 007 907.27		R25	8 190.81	3 007 909.76
L26	8 079.93	3 007 912.80		R26	8 067.83	3 007 962.41
L27	8 029.63	3 007 943.95		R27	7 956.63	3 008 047.15
L28	8 009.49	3 007 958.30		R28	7 916.64	3 008 088.45
L29	7 942.62	3 008 012.32		R29	7 865.29	3 008 153.96
L30	7 888.61	3 008 063.89		R30	7 829.41	3 008 224.13
L31	7 835.20	3 008 129.12		R31	7 787.34	3 008 320.53
L32	7 784.80	3 008 202.83		R32	7 556.28	3 008 921.74
L33	7 742.34	3 008 300.90		R33	7 519.37	3 009 009.46
L34	7 522.12	3 008 913.89		R34	7 512.86	3 009 022.52
L35	7 504.32	3 008 953.93		R35	7 497.11	3 009 046.58
L36	7 476.61	3 009 006.71		R36	7 419.71	3 009 136.58
L37	7 443.17	3 009 056.10		R37	7 355.95	3 009 193.35
L38	7 404.87	3 009 101.82		R38	7 277.49	3 009 243.14
L39	7 362.11	3 009 143.39		R39	6 943.68	3 009 437.79
L40	7 250.15	3 009 215.12		R40	6 249.69	3 009 838.38
L41	7 137.15	3 009 287.52		R41	5 420.74	3 010 316.88
L42	6 201.41	3 009 827.62		R42	4 309.63	3 010 958.24
L43	5 420.09	3 010 278.59		R43	4 193.00	3 011 029.37
L44	4 781.48	3 010 647.20		R44	4 152.09	3 011 056.37
L45	4 767.73	3 010 642.38		R45	4 122.93	3 011 079.34
L46	4 745.79	3 010 655.02		R46	4 046.23	3 011 147.11
L47	4 739.71	3 010 671.31		R47	3 969.21	3 011 235.58
L48	4 137.88	3 011 018.68		R48	3 932.50	3 011 285.82
L49	4 092.93	3 011 045.72		R49	3 898.86	3 011 348.55
L50	4 015.54	3 011 116.74		R50	3 873.83	3 011 403.12
L51	3 977.81	3 011 154.26		R51	3 837.84	3 011 496.09

Vel Sheet	19	Van of	22	P1239/23
-----------	----	--------	----	----------

PADRESERWE KOÖRDINATE / ROAD RESERVE CO-ORDINATES						
LINKERKANT/LEFT HAND SIDE				REGTERKANT/RIGHT HAND SIDE		
	Y	X	WG23 °		Y	X
L52	3 931.72	3 011 208.77		R52	3 824.06	3 011 542.77
L53	3 897.09	3 011 258.82		R53	3 803.50	3 011 632.32
L54	3 874.11	3 011 295.97		R54	3 797.37	3 011 668.91
L55	3 855.88	3 011 328.81		R55	3 865.94	3 011 693.53
L56	3 826.35	3 011 392.27		R56	3 859.28	3 011 722.89
L57	3 801.02	3 011 462.34		R57	3 790.63	3 011 741.01
L58	3 781.35	3 011 535.13		R58	3 661.65	3 013 120.96
L59	3 771.21	3 011 590.04		R59	3 611.56	3 013 234.32
L60	3 762.35	3 011 656.33		R60	3 516.36	3 013 334.10
L61	3 738.82	3 011 648.79		R61	3 405.14	3 013 389.36
L62	3 729.01	3 011 676.11		R62	3 308.31	3 013 399.53
L63	3 750.87	3 011 731.20		R63	3 202.94	3 013 402.27
L64	3 740.03	3 011 894.25		R64	3 140.62	3 013 397.46
L65	3 627.21	3 013 110.03		R65	3 109.50	3 013 393.57
L66	3 592.61	3 013 192.72		R66	2 539.89	3 013 372.48
L67	3 559.70	3 013 238.78		R67	2 208.67	3 013 360.22
L68	3 525.28	3 013 275.48		R68	2 066.54	3 013 321.06
L69	3 499.59	3 013 296.88		R69	1 947.07	3 013 258.90
L70	3 472.63	3 013 314.55		R70	1 458.95	3 012 940.59
L71	3 398.80	3 013 345.64		R71	- 169.87	3 011 876.88
L72	3 383.28	3 013 349.92		R72	- 340.98	3 011 768.03
L73	3 341.20	3 013 358.64		R73	- 392.82	3 011 744.97
L74	3 298.26	3 013 361.17		R74	- 417.05	3 011 738.95
L75	3 147.85	3 013 355.94		R75	- 443.94	3 011 732.26
L76	3 115.15	3 013 354.82		R76	- 475.89	3 011 726.29
L77	2 907.03	3 013 350.75		R77	- 521.46	3 011 724.68
L78	2 282.37	3 013 328.36		R78	- 581.21	3 011 725.94
L79	2 231.43	3 013 325.09		R79	- 711.21	3 011 768.37
L80	2 192.64	3 013 319.63		R80	- 845.57	3 011 876.78
L81	2 165.12	3 013 314.43		R81	- 860.86	3 011 902.59
L82	2 133.68	3 013 306.31		R82	- 892.35	3 011 963.13
L83	2 101.06	3 013 296.57		R83	-1 511.49	3 013 681.26
L84	2 071.15	3 013 283.99		R84	-1 657.59	3 013 843.74
L85	1 988.97	3 013 242.05		R85	-2 381.71	3 014 382.06
L86	1 959.34	3 013 225.51		R86	-2 802.58	3 014 694.42
L87	- 317.90	3 011 740.54		R87	-6 266.72	3 017 272.99
L88	- 391.29	3 011 709.18		R88	-6 340.30	3 017 327.76
L89	- 438.52	3 011 696.70		R89	-7 985.31	3 018 549.86
L90	- 494.23	3 011 688.52		R90	-9 285.11	3 019 515.50
L91	- 548.15	3 011 689.41		R91	-9 806.37	3 019 903.11
L92	- 604.86	3 011 696.88		R92	-13 745.80	3 022 832.45
L93	- 660.04	3 011 711.77		R93	-15 451.55	3 024 100.85
L94	- 690.37	3 011 723.22		R94	-16 925.63	3 025 196.96
L95	- 737.52	3 011 729.18		R95	-16 982.71	3 025 235.77
L96	- 754.94	3 011 739.10		R96	-17 146.64	3 025 318.61
L97	- 785.65	3 011 777.72		R97	-17 210.79	3 025 338.96
L98	- 789.86	3 011 780.91		R98	-17 282.93	3 025 358.94
L99	- 845.77	3 011 833.86		R99	-17 362.58	3 025 377.40
L100	- 868.57	3 011 856.07		R100	-17 469.77	3 025 395.42
L101	- 932.20	3 011 958.82		R101	-17 924.69	3 025 442.71
L102	- 948.80	3 012 001.55		R102	-17 939.03	3 025 445.60

Vel 20 Van 22
Sheet of

P1239/23

PADRESERWE KOÖRDINATE / ROAD RESERVE CO-ORDINATES						
LINKERKANT/LEFT HAND SIDE				REGTERKANT/RIGHT HAND SIDE		
	Y	X	WG23 °		Y	X
L103	-1 426.18	3 013	340.86	R103	-18 442.40	3 025 495.97
L104	-1 485.87	3 013	499.39	R104	-20 352.39	3 025 687.12
L105	-1 538.07	3 013	615.46	R105	-20 479.56	3 025 701.63
L106	-1 562.38	3 013	655.16	R106	-20 572.68	3 025 716.46
L107	-1 609.26	3 013	721.75	R107	-20 663.81	3 025 739.39
L108	-1 704.00	3 013	824.04	R108	-20 718.83	3 025 755.60
L109	-1 741.20	3 013	854.56	R109	-21 830.07	3 026 105.57
L110	-4 632.00	3 016	012.60	R110	-21 975.50	3 026 152.79
L111	-6 292.54	3 017	250.44	R111	-22 015.10	3 026 168.10
L112	-7 994.90	3 018	515.51	R112	-22 098.35	3 026 205.23
L113	-9 316.31	3 019	497.49	R113	-22 876.76	3 026 583.67
L114	-9 811.40	3 019	865.41	R114	-22 958.76	3 026 620.74
L115	-13 180.73	3 022	369.25	R115	-22 981.54	3 026 629.06
L116	-13 773.45	3 022	810.29	R116	-23 165.68	3 026 685.66
L117	-15 339.87	3 023	975.86	R117	-23 908.46	3 026 887.38
L118	-16 142.95	3 024	573.42	R118	-24 031.44	3 026 920.77
L119	-16 883.58	3 025	122.96	R119	-28 124.00	3 028 032.19
L120	-16 949.92	3 025	169.20	R120	-28 835.94	3 028 225.62
L121	-16 998.70	3 025	200.61	R121	-30 665.30	3 028 722.65
L122	-17 099.29	3 025	252.53	R122	-30 752.57	3 028 748.52
L123	-17 155.46	3 025	277.50	R123	-30 800.19	3 028 757.17
L124	-17 245.02	3 025	312.46	R124	-30 848.51	3 028 761.04
L125	-17 337.62	3 025	338.31	R125	-30 895.53	3 028 762.26
L126	-17 431.90	3 025	356.68	R126	-30 995.53	3 028 759.96
L127	-17 527.19	3 025	367.66	R127	-31 041.97	3 028 757.21
L128	-17 903.66	3 025	407.67	R128	-31 112.19	3 028 748.34
L129	-17 931.90	3 025	409.19	R129	-31 161.54	3 028 738.40
L130	-18 474.79	3 025	465.32	R130	-32 088.80	3 028 508.16
L131	-18 553.77	3 025	473.49	R131	-32 256.05	3 028 467.45
L132	-20 357.10	3 025	653.62	R132	-32 327.69	3 028 453.70
L133	-20 482.61	3 025	667.80	R133	-32 358.84	3 028 451.53
L134	-20 547.70	3 025	677.92	R134	-32 400.46	3 028 448.64
L135	-20 671.12	3 025	705.99	R135	-32 473.33	3 028 452.35
L136	-20 717.56	3 025	719.99	R136	-32 545.22	3 028 464.89
L137	-21 837.89	3 026	072.43	R137	-32 614.93	3 028 486.48
L138	-21 984.25	3 026	120.55	R138	-35 047.50	3 029 422.44
L139	-22 025.20	3 026	135.59	R139	-35 061.49	3 029 427.83
L140	-22 112.41	3 026	174.48	R140	-35 172.02	3 029 476.42
L141	-22 690.43	3 026	455.95	R141	-35 278.85	3 029 533.01
L142	-22 975.45	3 026	591.00	R142	-38 269.88	3 031 206.92
L143	-23 086.47	3 026	628.44	R143	-38 438.46	3 031 310.84
L144	-23 741.57	3 026	808.05	R144	-38 603.15	3 031 421.11
L145	-23 943.57	3 026	861.81	R145	-41 442.35	3 033 388.56
L146	-23 980.36	3 026	871.60	R146	-41 517.05	3 033 447.57
L147	-28 873.00	3 028	199.42	R147	-41 603.10	3 033 529.83
L148	-30 692.59	3 028	693.10	R148	-41 682.48	3 033 623.49
L149	-30 868.76	3 028	719.41	R149	-41 750.40	3 033 723.36
L150	-31 012.03	3 028	723.69	R150	-41 800.13	3 033 814.42
L151	-31 115.70	3 028	711.43	R151	-41 841.49	3 033 902.50
L152	-32 289.64	3 028	419.69	R152	-41 875.42	3 033 996.63
L153	-32 331.86	3 028	415.45	R153	-41 888.22	3 034 044.26

Vel	21	Van	22	P1239/23
Sheet		of		

PADRESERWE KOÖRDINATE / ROAD RESERVE CO-ORDINATES					
LINKERKANT/LEFT HAND SIDE			REGTERKANT/RIGHT HAND SIDE		
	Y	X	WG23 °	Y	X
L154	-32 416.69	3 028 407.59		R154	-41 945.23 3 034 318.29
L155	-32 511.31	3 028 416.88		R155	-42 326.95 3 036 172.61
L156	-32 590.19	3 028 438.32		R156	-42 369.78 3 036 367.48
L157	-35 079.03	3 029 388.74		R157	-42 449.72 3 036 754.87
L158	-35 168.24	3 029 430.44			
L159	-38 409.27	3 031 244.50			
L160	-41 462.78	3 033 360.45			
L161	-41 539.47	3 033 421.70			
L162	-41 627.86	3 033 506.40			
L163	-41 709.93	3 033 602.38			
L164	-41 779.49	3 033 705.32			
L165	-41 829.82	3 033 796.31			
L166	-41 873.56	3 033 889.41			
L167	-41 908.46	3 033 986.26			
L168	-41 936.94	3 034 092.19			
L169	-42 047.28	3 034 628.43			
L170	-42 237.64	3 035 553.12			
L171	-42 303.50	3 035 873.05			
L172	-42 389.33	3 036 289.01			
L173	-42 402.17	3 036 351.22			
L174	-42 484.01	3 036 747.79			

Vel	22	Van	22	P1239/23
Sheet		of		